

JEWISH Voice

Vol. 46, No. 41 10 Av 5766 August 4, 2006 16 Pages

PUBLISHED BY THE JEWISH FEDERATION OF DELAWARE, 100 WEST 10TH ST., SUITE 301, WILMINGTON, DE 19801-1628

WWW.SHALOMDELAWARE.ORG

YOU CAN HELP ISRAEL IN THIS TIME OF CRISIS!

By Lynn B. Edelman, Editor

On July 26th the Jewish Community of Delaware showed its solidarity with the people of Israel. We stood more than 500 strong in support of Israel, overfilling the auditorium of the Bernard and Ruth Siegel Jewish Community Center. Men, women, teenagers and young children wore Israel's colors, waved American and Israeli flags, sang Israel's stirring national anthem and proudly displayed banners stating simply that "We Stand With Israel".

Our community truly rallied-giving thunderous applause to a host of stirring local and national speakers. On July 26th and in the ensuing weeks, we have opened both our hearts and our checkbooks to support our Jewish homeland in this time of dire crisis.

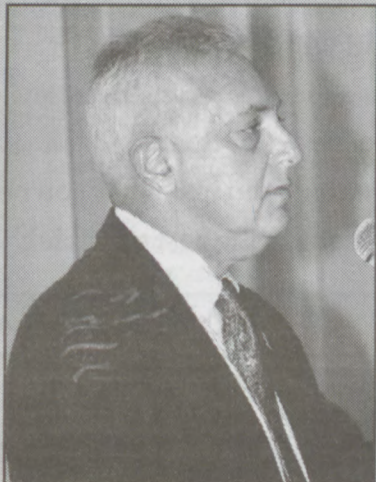
Jewish Federation of Delaware President Robert B. Pincus is pleased to announce that our local Jewish community has responded overwhelmingly to the United Jewish Communities Israel Crisis Campaign. Under the capable leadership of JFD Immediate Past President Barry S. Kayne, DDS, this emergency appeal for assistance in helping those Northern Israeli residents most vulnerable to the despicable rocket strikes launched by Hezbollah-chiefly children, seniors, the disabled, as well as new émigrés from Ethiopia and other lands-has generated more than \$316,000 in contributions.

The goal of this Campaign is ambitious. UJC/federations, in collaboration with our overseas partners, the Jewish Agency for Israel (JAFI) and the American Jewish Joint Distribution Committee (JDC), hope to raise \$300,000,000!

This campaign has been launched in response to the on-going terrorist threat against Israel.

It will:

- provide counseling for victims of missile attacks and programming for thousands of children who are forced



Barry S. Kayne, Chair
Israel Crisis Campaign



into bomb shelters.

- bring nearly 7,000 young people from Israel's northern communities to safer areas further south for one month to attend summer camps, giving them a respite from the attacks and life in bomb shelters, and possibly bring entire families out of harm's way;

- aid the elderly and other at-risk populations, including the disabled, by offering intervention programs in day-care centers and support communities and trauma relief;

- offer medical assistance, financial support, housing and mobility services.

Among the more vulnerable populations are recent immigrants from Ethiopia, who comprise the majority of absorption center residents in the north. (In one of the initial missile attacks, an absorption center in Safed was hit).

These immigrants face a series of difficult challenges, coming as they do from one of the poorest areas on Earth. UJC is already working through



Operation Promise to hasten the immigration of the remaining Ethiopian Jews to Israel and supplement added educational programs to ease their integration into the mainstream. As if overcoming the many difficulties associated with immigration weren't enough, these Jews also must deal with constant terrorism.

"Israel, the ancestral homeland of our Jewish people is facing yet another crisis. These people in her Northern regions are being targeted by terrorists for no other reason than they are Jewish," said Kayne, appealing to Delaware Jews to give generously to Federation's Israel Crisis Campaign.

He advised families to "sit down with your children and discuss the

importance of giving tzedakah-of demonstrating that Jews help their fellow Jews in need."

"We are all mispocha," Kayne concluded.

You can contribute on-line to the Israel Crisis Campaign by following the link on the JFD website, www.shalomdelaware.org. Checks made payable to the Israel Crisis Campaign may be mailed to the Jewish Federation of Delaware, Suite 301, 100 West 10th Street, Wilmington, DE 19801. For further information, please call Ruth Rosenberg at 427-2100, ext. 17.

Please, give generously, for now, more than ever, it does a world of good!

Photos by Mike Samuels

ARAD PROVIDES SAFE HAVEN FOR DISPLACED FAMILIES

Arad-Tamar, Delaware's Partnership 2000 community, has taken the Biblical admonition of "welcoming the stranger" to heart. The big-hearted residents of Arad have taken in 1300 families from Israel's northern region who have been rendered temporarily homeless by the devastating effects of Hezbollah rockets. Volunteers, working in conjunction with the Jewish Agency, have provided these men, women and children with food, clothing, furniture and a broad spectrum of social services including summer camp, to help them get back on their feet. Municipal employees are working overtime to create the infrastructure needed to support these additional residents.

In Tamar, 250 residents from



Northern Israeli communities hit by rocket strikes, are being housed in area hotels, guest houses and in dormitories of a local school.

The cost of providing housing and other basic services to these new arrivals is more than \$12,000 a week. Yet, to paraphrase a popular television commercial, the cost of Jews reaching out to their fellow Jews in need is priceless!

Many Arad residents, like Mimi Avishai, who serves as Living Bridge chairperson for this Partnership 2000 community, have opened their homes to entire families. Mimi shares her story with Jewish Voice readers:

It was late Sunday evening. We were sitting on our front porch wait-

ing. The phone rang and it was Masha, a woman I had never met, but I had spoken to her at least a dozen times during the course of that day. She told me that she was in Arad but could not find the address we had given her. Bruce got in the car and went to find her.

They arrived at the house after four and a half hours on the road. Masha and her two sons, Pavel (16) and Igor (9) were among the first to leave Haifa. They had spent the morning in the bomb shelter listening to the shriek of the air-raid sirens followed by the bang of the rocket landings. She made the decision to leave Haifa not knowing where she would end up.

See SAVE HAVEN, PAGE 14

AN ACTIVE PART OF YOUR COMMUNITY



2006 Subaru B9 Tribeca

Matt Slap

Think. Feel. Drive.



SUBARU

"For 25 years,
we have been here
getting you moving."

- Eve Slap, Owner

255 E. Cleveland Ave.,
Newark DE 19711

302-453-9900

www.mattslap.com

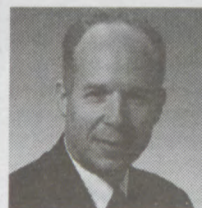
READY FOR A SMALLER, MORE CONVENIENT HOME?

Now may be the time to take advantage of the equity you have earned to move to a home that's more convenient for you. Did you know that MSN Money reports that home values in the Wilmington area have increased 62.5% in the past five years?* You may be surprised at just how much your home is worth.

If you're interested in learning your home's current value, at no cost and with no obligation, or in finding out about local options for a more carefree lifestyle, I'd love to talk with you.

You have my word that I will take the time to get to know you and understand just what you need. I am committed to helping you make the best possible choices about your home.

REAL ESTATE GUIDANCE FROM A NAME YOU TRUST!



Eric Braunstein

302-234-3352 direct

302-239-3000 office

ebraunstein@psre.com

*moneycentral.msn.com,
The Next Hot Housing Markets, Sept. 2005



A Classic Affair

With upscale elegance and comfort, Harry's Savoy Ballroom continues its record of award-winning cuisine and impeccable service with conference & banquet facilities accommodating from 10 to 400 guests.

Coming This Fall!

Harry's Mitzvah Expo

Showcasing everything you need for the best affair ever!

- Complimentary food & beverages
- Display of Themed Tables
- Vendors from every venue
- Door Prizes

Sunday, October 29th • Noon - 4pm

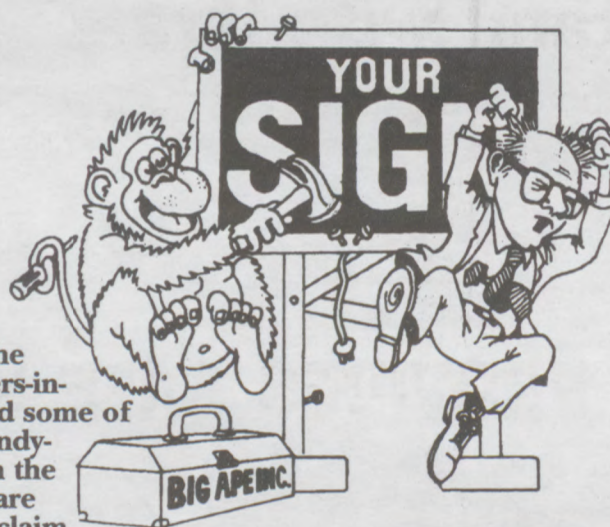
Call Marge to reserve your spot!

302.475.3000

Harry's
SAVOY GRILL

2020 Naamans Road • Wilmington, Delaware
(Minutes off Route 95 & 202)
302.475.3000 • www.harrys-savoy.com

Don't Let Just Anyone Monkey with Your Sign CALL A TUPP PROFESSIONAL



Half the brothers-in-law and some of the handy-men in the Delaware valley claim they can fix or maintain your sign. Don't you believe it, Every year for the past 73 years, we've had to fix the handy work of some jack-of-all-trades. It always ends up costing the owner more time and money than if he would have called us first.

Call 322-1600

**TUPP
SIGNS**

457 E. New Churchman's
New Castle, DE 19720

FEDERATION FOCUS

They called him a Lone Wolf



Samuel H. Asher
Executive Vice President

A man entered the Jewish Federation of Greater Seattle on Friday July 28, 2006 and opened fire, killing one member of the staff and injuring 5 others. The SCN network - a

UJC sponsored e-mail alert system - told us that it was the work of a lone individual reacting to the ongoing conflict in the Middle East. Just a lone wolf - Only a crackpot - The world seems filled with crazies these days.

It is incumbent upon us all to pull together against these forces of evil. My father taught me that you have to stand up to bullies. You have to tell them that you don't accept what they are saying, you won't accept their actions, and that they must pay a price when they cross over the line.

On Wednesday evening July 23, 2006, our Jewish Community stood up to some of the world's worst bullies. We stood over 500 strong at the Bernard and Ruth Siegel JCC and we stood with Israel. We stated loudly and clearly that

*We do not agree with people saying they want to destroy Israel.

*We do not agree with Hezbollah abducting Israeli soldiers and threatening Israeli citizens with rockets.

*There must be consequences to these attacks on the Jewish State and simply disavowing the existence of a terrorist army in your midst does not make you immune from

retribution.

We stand with Israel.

We also stand with the Jewish Community of Seattle. A lone wolf desecrated their Federation building and staff. He defiled their community and snuffed out the life of a woman whose only crime was that she worked for the good of her community. This tragedy hits too close to home. Could you imagine someone coming into our Federation office or our Jewish Community Campus and committing such a heinous crime? Our heart goes out to the family of Pam Waechter as well to the entire Seattle Jewish community. We pray that Cheryl Stumbo, Dayna Klein, Carol Goldman, Layla Bush and Christine Rexroad are restored quickly and fully to good health.

A few weeks ago, even before the Seattle attack, the Jewish Federation of Delaware through its Jewish Community Relations Committee enlisted the help of the Delaware State Police in order to conduct a security audit of the Weinberg Campus. We are pleased to report that by now many, if not all, of the recommendations have been implemented. As a result of the Friday, July 28th

attack on the Seattle Jewish Federation, we convened a meeting on Monday, July 31 at the Bernard and Ruth Siegel JCC of the beneficiary agencies of the Jewish Federation of Delaware and the area synagogues with representatives of the State Police and their Delaware Information Analysis Center, the FBI, and the Wilmington Police. We thank Governor Minner for alerting the State Police to our issues and we thank the head of the State Police Colonel MacLeash, and the following members of the State Police: Field Operations Officer for New Castle County Albert Homiak, Jr., Captain William Harris and Detective James Woznicki who continue to work with us.

They are all committed to beef up security for all of our beneficiary agencies and the area synagogues including a security audit to re-check security procedures. I also want to thank our own special agent Mark Delmerico who is our liaison to these agencies.

We don't want any Lone Wolves around here. If you see or hear anything suspicious please call the State Police Tip Line at 1-800-FORCE12. We must remain vigilant and we must continue to Stand with Israel.

Encounter Israel



Lauren Schultz
Director, Women's Philanthropy

Now, more than ever, many of us find ourselves asking "What can we do for Israel? How can we help?" There is a long list of ways to support Israel, now and always. We can help by donating money or buying Israeli products. We can demonstrate our solidarity by attending a rally. Or we can tie a blue ribbon around a tree or mailbox in front of our homes to raise awareness about the kidnappings. We can plan and attend Israel educational forums at synagogues or college campuses. We can all be emissaries for Israel and educate our colleagues and friends, Jewish and non-Jewish alike. We can advocate by writing letters in support of Israel's right to defend itself. We can express appreciation to the United States administration for its steadfast support for Israel. Perhaps the very best way we can support Israel is to travel there. Going to Israel is the most powerful way to show solidarity. It not only shows that we stand with our fellow Jews in Israel

but it helps the economy in these trying times.

There are always opportunities to join missions to Israel, whether nationally or locally. On March 6-15, 2007 there will be a very special mission for women. Our Partnership 2000 (P2K) cluster of New Jersey and Delaware has organized the "Encounter Israel" trip. This special mission to Israel, exclusively for women, will be a unique and exciting opportunity to bond and experience Israel on an entirely new level. "Encounter Israel" will combine a significant cultural element with touring of the country.

You can experience Jerusalem, Tel Aviv, the Dead Sea and more with women who share the same interests and values as you. Some highlights of the mission will include: visiting Israel's most prominent museums, enjoying a wide variety of artistic and lifestyle experiences, and touring some of Israel's major historical and cultural locations. You

will visit and meet with several Israeli artists in their homes and studios, experience Israel's shopping and fine cuisine and interact with Israeli women.

In addition to experiencing modern Israeli culture, you will see firsthand how the Federation helps our fellow Jews in Israel. You will get to witness the work made possible by contributions to the Jewish Federation Annual Campaign by visiting our P2K region in the Dead Sea, Arad-Tamar. You will visit an Ethiopian absorption center, meet with the cities' mayors and spend a special evening at the home and art studio of Arad's own Estee Barak. I hope you can take advantage of this incredible opportunity to meet other wonderful women, while strengthening your connection to Israel. Israel needs us now. For more information on the many ways you can support Israel or to learn more about "Encounter Israel," visit our website at www.shalomdelaware.org or call us at (302) 427-2100.

We Stand with Israel

10 THINGS YOU CAN DO TO SUPPORT ISRAEL

1. **CONTRIBUTE** to the Israel Crisis Campaign. Israel has been devastated by terrorism. Click www.shalomdelaware.org to make your gift today.
2. **RESPOND**. Magen David Adom needs your help. www.magendavidadom.org.
3. **SPEAK OUT**. The next time you hear something that puts down Israel, don't assume that it's someone else's job to counter it. You can make a difference!
4. **VISIT ISRAEL** to express your support in person.
5. **INVEST IN ISRAEL**. You can buy Israeli products directly at www.shopin-Israel.com, www.usaisrael.org, and www.israeliwishes.com. Buy Israel Bonds www.israelbonds.com.
6. **MONITOR THE MEDIA**. Write letters call or complain when Israel coverage is unfair or unbalanced. Contact karen.venezky@shalomdel.org
7. **CONTACT** your US. Members of Congress to express your support for Israel and to thank them for their continued support.

(Delaware) Senator Biden (202) 224-5042
(Delaware) Senator Carper (202) 224-2441
(Delaware) Congressman Castle (202) 225-4165

(Pennsylvania) Senator Specter (202) 224-4254
(Pennsylvania) Senator Santorum (202) 224-6324
(Pennsylvania) Congressman Pitts (202) 225-2411

8. **SUPPORT** Israelis and victims of terror. Make phone calls; send post cards and emails to friends and family in Israel to let them know you care.

9. **SPONSOR** educational forums on the Middle East. Contact the Jewish Community Relations Committee at the Jewish Federation of Delaware.

10. **CONNECT** and reconnect with Israel by attending Israel programs. Bring your family and friends.

(302) 427-2100

www.shalomdelaware.org



Save the Date



Thursday, September 14, 2006, 7:00 PM

Candidates Forum

Jointly sponsored by the Wilmington Chapter of Hadassah and the Jewish Community Relations Committee of the Jewish Federation of Delaware

Meet the candidates for statewide office in Delaware and learn how they stand on issues of import to you.

For additional information, please call Karen Venezky at 302-427-2100, ext. 19.

Now is the time to set up a Philanthropic Fund!

The Jewish Federation of Delaware office has received numerous phone calls from donors who currently have Philanthropic Fund accounts with the Jewish Fund for the Future. Motivated by the current crisis in Israel, these men and women are requesting that a distribution of funds from their endowments be made to the Israel Crisis Campaign.

This a wonderful opportunity to create an

endowment through the Jewish Fund for the Future and have a ready source of funds to support the Israel Crisis Campaign and/or any other philanthropic pursuit that interests you. You can open a fund for as little as \$5000 and need only to maintain a \$5000 balance.

For more information, contact Karen Venezky at karen.venezky@shalomdel.org or call 427-2100 x19.

EDITORIALS AND OPINIONS

Words are lethal weapons in war against terrorism

Much of the current media coverage of the crisis in the Mid-East paints a picture of Israel as a callous aggressor, instigating air and ground attacks against Hezbollah targets in Southern Lebanon without any regard for civilian casualties. If, indeed, "the media is the message", then the world is sadly misinformed.

Israel, which has been engaged in an almost constant battle for survival since its creation more than 58 years ago, was forced to take action against Hezbollah operatives when they violated her established borders **without provocation** and kidnapped two soldiers. Israel has a moral obligation to ferret out these agents of evil who openly advocate Israel's annihilation, and bring her soldiers home.

Hezbollah, dubbed militants by CNN and other world news organizations, is defined by the MIPT Terrorism Knowledge Base as a

"Lebanese umbrella organization of radical Islamic Shiite groups and organizations, which opposes the West and seeks to create a Muslim fundamentalist state modeled on Iran." This group, whose name ironically means "party of God," is believed to be responsible for nearly 200 attacks since 1982 that have killed more than 800 people.

The God of Abraham and Allah would rail against the senseless slaughter of women and children used as human shields in Hezbollah's terror campaign. The supreme being that most mainstream Jews, Christians and Muslims pray to in synagogues, churches and mosques would view the launch of more than three hundred rockets against Israeli citizens as a perversion of his name.

Since the conflict with Hezbollah began, Israel has lost 55 citizens. They are:

Civilians:

Monica Seidman Lehrer, 40, of Nahariya

Nitzan Roseban, 33, of Safed
Omer Pesachov, 7, of Nahariya
Yehudit Itzkovitch, 58, of Meron
Shmuel Ben Shimon, 41, of Yokneam Illit
Asael Damti, 39, of Kiryat Yam
Nissim Elharar, 43, of Kiryat Ata
David Feldman, 28, of Kiryat Yam
Rafi Hazan, 30, of Haifa
Dennis Lapidos, 24, of Kiryat Yam
Reuven Levy, 46, of Kiryat Ata
Shlomi Mansura, 35, of Nahariya
Andrei Zelinsky, 36, of Nahariya
Rabia Abed Taluzi, 3, of Nazareth
Mahmoud Taluzi, 7, of Nazareth
Shimon Glickblich, 60, of Haifa
Habib Isa Awad, 48, of Iblin
Dou'a Abbas, 15, of Kfar Mrar

Military:

Sgt. Maj.(res.) Eyal Benin, 22, of Beersheba
Sgt. Maj.(res.) Shani Turgeman, 24, of Beit Shean
Sgt. Maj. Wassim Nazal, 26, of Yanuah
Staff Sgt. Alexei Kushnirski, 21, of Nes Ziona

Staff Sgt. Yaniv Bar-on, 20, of Maccabim
Sgt. Gadi Mosayev, 20, of Acre
Sgt. Shlomi Yirmiyahu, 20, of Rishon le-Zion

Sgt. Nimrod Cohen, 19, of Mitzpe Shalem
Staff Sgt. Tal Amgar, 21, of Ashdod
Sgt. Yaniv Hershkovitz, 21, of Haifa
Cpl. Shai Atias, 19, of Rishon le-Zion
1st Sgt. Dov Steinhuss, 37, of Carmiel
Staff Sgt. Yonatan Hadasi, 21, of Kibbutz

Merhavia

Staff Sgt. Yotam Gilboa, 21, of Kibbutz Maoz Haim
Maj. Benjamin (Benji) Hillman, 27, of Maccabim Re'ut
Staff Sgt. Refanael Muskai, 21, of Mazkeret Batya

Staff Sgt. Nadav Baeloha, 21, of Carmiel
Staff Sgt. Liran Saadia, 21, of Kiryat Shmona

Staff Sgt. Yonatan (Sergei) Vlasuyuk, 21, of Kibbutz Lahav

Maj. Ran Yehoshua Kochva, 37, of Beit Hanania

2nd Lt. Lotan Slavin, 21, of Hatzeva
Staff Sgt. Kobi Smileg, 20, of Rehovot
Col. Zvi Luft, 42, of Kibbutz Hogla
1st Lt. Tom Farkash, 23, of Caesarea
Maj. Ro'i Klein, 31, of Eli
Lt. Amihai Merhavia, 24, of Eli
Lt. Alexander Schwartzman, 24, of Acre
Sgt. Shimon Adega, 21, of Kiryat Gat
Staff Sgt. Edan Cohen, 21, of Jaffa
Staff Sgt. Shimon Dahan, 20, of Ashdod
Cpl. Ohad Klausner, 20, of Bet Horon
Cpl. Assaf Namer, 27, of Kiryat Yam.
Lt. Yiftah Shreier, 21, of Haifa
Staff Sgt. Yonatan Einhorn, 22, of Gizmo
Lt. Ilan Gabai, 21, of Kiryat Tivon
Sgt. Michael Levin, 22, of Jerusalem

It is not enough to mourn their loss. In their memory, we must commit ourselves to standing beside the people of Israel who are reeling from the emotional, physical and financial effects of this tremendous crisis. Federation's Israel Crisis Campaign is in full swing, with more than \$313,000 raised to date. More is needed.

To make your pledge, visit the JFD website at www.shalomdelaware.org or call Ruth Rosenberg, campaign director at 427-2100, ext. 17.

B'Shalom,

Lynn B. Edelman

Lynn B. Edelman
Editor

THURSDAY NOON DEADLINE

for all articles,
advertisements and news for
The Jewish Voice

ISSUE	FOCUS	DEADLINE
Sept. 15	Rosh Hashanah	Sept. 7
(Holiday begins 9/22)		

All submissions in person for
The Jewish Voice due at
JFD offices or mail:
The Jewish Voice

100 W. 10th St., Suite 301, Wilmington, DE 19801-1628

e-mail: lynn.edelman@shalomdel.org

Dry Bones "JUST ANOTHER CRAZY GUY"



LETTERS TO THE EDITOR

Seaside needs teachers

I am sad to announce that after many conversations with selected individuals and after mass E-mails we have been unable to get someone to help teach our children. This job requires no experience and you do not even have to know how to teach or read fluent Hebrew. Allison Colker will work with you on lesson plans given we have done this age class already. We need a teacher for this coming year and will need 3 more for the year after that. We have community interest for approx 18 children this coming year split into 3 classes and we are predicting about 25 students the following year in 4 classes.

This will probably max out our classes for years to come.

PLEASE if you know of anyone who is retired who may have an interest in helping us out or if you are available, then contact Allison Colker. You can reach Allison at home 301-515-3306, work 202-624-3581, cell 301-768-8763, beach 302-227-1107, or at SJCReligiousSchool@yahoo.com.

If we are not able to find someone then this may be the last year of Seaside Jewish Community's Religious School!

Sincerely,

Jeffrey Hawtof
Youth Ed Committee



Published semimonthly, and monthly in July and August, by the Jewish Federation of Delaware.

Lynn B. Edelman, Editor

Joel Glazier, Community Reporter

Sid Stein, Advertising Manager

Samuel H. Asher, Publisher's Representative

Marion Hamermesh, Editorial Committee Chair

Editorial Committee:

Mark Delmerico, Cheryl Kamm, Frances Klein, Connie Kreshtool,

Dina Lipschultz, Michele Sands, Beth Moskow-Schnoll,

Business Committee: Michael Schwartz

Editorial opinions expressed in this newspaper are those of the newspaper and not those of any individual or other organization. Signed editorials and letters do not represent the view of the newspaper, but rather express the view of the writer. No material will be accepted by The Jewish Voice which is considered against the best interests of the Jewish community. The Jewish Voice does not guarantee the kashruth or the observance of Jewish law of any of its advertisers. Printed material and video tapes sold by our advertisers have not been reviewed by the Jewish Voice, nor are they endorsed in any way by The Jewish Voice.

Member of the American Jewish Press Association and Jewish Telegraphic Agency.

©2005 The Jewish Voice

Printed by Dover Post Company

Periodicals postage paid for The Jewish Voice (USPS-704160) at Wilmington, Delaware.

Subscription price: \$25.00. Mailed to subscribers and contributors to the Jewish Federation of Delaware. POSTMASTER: Send address changes to The Jewish Voice, 100 W. 10th St., Wilmington, DE 19801. (302) 427-2100.

The FAX number of The Jewish Voice is (302) 427-2438.

E-Mail: lynn.edelman@shalomdel.org

www.shalomdelaware.org



This Week in Jewish History



**Celebrate 350
Jewish Life in America
1654 - 2004**

July 31, 1928 - Canadian Bobbie Rosenfeld won an Olympic silver medal in the 100-meter race. The 1928 Olympics, held in Amsterdam, were the first in which women were allowed to compete in track & field events.

August 1, 1979 - Reconstructionist Rabbi Linda Joy Holtzman became the first woman to lead a U.S. Jewish congregation when she was appointed the spiritual leader of the Coatesville, PA, Beth Israel Congregation.

August 2, 1924 - The first issue of the "Saturday Review of Literature," founded and edited by Amy Loveman, appeared.

August 2, 1932 - Lillian Copeland won an Olympic gold medal in discus. At the previous Olympics, in 1928, she had won the silver in the same event. Her 1932 toss set a new world record.

August 2, 1998 - Children's television favorite Shari Lewis, a puppeteer who created the characters Lamb Chop and Charlie Horse died.

August 3, 1923 - Noted fashion designer Anne Klein was born.

August 3, 1944 - American Jewish journalist Ruth Gruber arrived in New York harbor with 984 refugees from Nazi-occupied Europe, which concluded her secret mission to escort the refugees from Italy to America.

Read more at: http://www.jwa.org/this_week/week31.html

EDITORIALS AND OPINIONS

An open letter to the Jewish community of Delaware

By John A. Elzufon, Esq.

Israel is the homeland of the Jews. While the modern State of Israel is less than 60 years old, it has been the homeland of the Jewish people for thousands of years.

It is the land of Abraham, Isaac and Jacob; of Sarah, Rebecca, Rachel and Leah; of Joshua and Samson; of Deborah and Samuel; of David and Solomon; of Isaiah and Jeremiah.

3,200 years ago the Jews built their first temple at Shiloh. 3,000 years ago, King David named Jerusalem as his capital. 2,500 years before Columbus sailed, the Great Temple of Solomon flourished. When the great cities of our present world were distant villages surrounded by forests and swamps, our priests prayed at the great temple in Jerusalem and the Judean hills echoed with the thundering oratory of the prophets who forged a moral code for humanity unrivaled to this day.

For a thousand years, Jews flourished in their homeland. 2000 years ago, when conquered by the Romans and dispersed to the four corners of the earth, the Jewish people never forgot Israel. For 2000 years the daily prayers of our people longed for the day that the biblical prophecy of return would be fulfilled and the Jewish homeland and Jerusalem restored.

140 years ago, Jews began returning to their land, even though it was still ruled by others. The glorious kingdom of David and Solomon was now the desert, the scorpion and the swamp. But this was our land and determined to make it once again flow with milk and honey the Jews began the task of rebuilding. Generations later, Israel, reborn, is a technological and agricultural marvel.

It is not without reason that for decades we have supported Israel emotionally, financially and politically.

Now Israel needs our support more than ever because she now stands as the front

line in democracy's war against terrorism. Just as Germany knew that she would have to defeat Britain to complete her dreams of conquest our enemies know that to defeat the United States and all those who cherish freedom, liberty and democracy, Israel must fall.

Whatever you may think of how Israel is conducting this war, there is a broader issue extant: the survival of Israel for the outcome of this conflict rivals the 1948 War of Independence in its importance.

Israel has always looked to the American Jewish Community for support and we have never failed. Now is not the time to waiver.

If you have not already pledged or given financial support to Israel then do so for your support is more than money. It is a message to the people of Israel.

It tells them that their hopes are our hopes and when they pray for peace so do we.

It tells them that the land they love is the land we love for in the heart of every Jew is a nerve that answers to the call of Israel.

It tells them that in this time of crisis and uncertainty our support will not waiver but will go forth as a mighty stream and let the people of Israel drink of it and be strong.

It tells them that if the storm clouds gather and the shadows fall, we will walk with them.

It tells them that we are one people with a rich heritage to which we all belong and from that sacred place called Israel we are connected to all Jews who dwell on earth.

But most of all it tells them that we are one and that the people of Israel are not now and never will be alone.

As it is written in the immortal words of our Holy Scripture:

*Whither thou goest I will go
And where thou lodgest, I will lodge
Thy people shall be my people
And thy G-d my G-d.*

John Elzufon is a past president of the Jewish Federation of Delaware.

A Call to Action

By Hon. Jack Markell

In times of crisis, people cry to G-d and ask "God, why didn't you send help?" G-d replies by saying, "I did send help. I sent you."

Will we be the first generation of Jews-the first generation of American-to give up on Israel?

Rabbi Jack Reimer once said, "Ours is not an I-Thou religion; our is a We-Thou religion. After all our people have been through, we know that to be a Jew means to be a cousin of the Jew in Cairo, and the Jew in Calcutta, the Jew in Berlin and the Jew in Baghdad. And most assuredly, we are connected to the Jews of Israel."

And while we rejoice in the benefits of our connection-that connection also means we bear a real price. That price is measured in dollars, yes, but also in courage and conviction.

In a remarkable speech last year, Newt Gingrich compares the Middle East today to that time-to Europe in the 1930s.

When the current leader of the dictatorship in Iran gets up and says in public that he wants to defeat the Anglo-Saxons and eliminate Israel from the face of the earth, this is not a complicated issue to analyze. As realists-and we all must be realists-we know that when the leader of Iran, the leaders of Hezbollah and the leaders of Hamas all say that same thing, they have communicated precisely what they intend.

So what do we do?

The easy part is money. Write a check. As the Jewish Federation of Delaware says, "Protect a child. Calm a mother. Send vital humanitarian aid." The folks here at JFD can help.

We also can help by educating ourselves. Read Alan Dershowitz's book, "The Case for Israel."

Much of the story of Israel, even today, is that of those who have died so that others might live. Author Barbara Kingsolver wrote beautifully "People often say that funerals and

memorials are for the living, not the dead." Maybe this is so. However we must contemplate what the dead ask of us.

Thousands of Israelis have awakened and lingered over coffee, saw children off to school, made plans, kissed spouses and set themselves off to do good, without ever dreaming that they would not see the sun set again.

And what does that mean for us? Do we sit idly by, bemoaning the 6:00 p.m. news and going about our daily lives. Or do we try to transform those unfinished lives into some greater endeavor-on behalf of what they might have been?

What would we want if it were us? What memorial would we ask the world to build for our remembrance?

Would it be a handsome monument? Or would it be real actions trying to further our goals of justice, of nation-building, of helping the next generation of Israelis and Palestinians and Arabs to live in peace?

There are incredible things happening in

Israel-researchers are making great strides in fighting disease; new Israelis are being resettled from across the globe; the country is being rebuilt.

When I ask you to support Israel now, I do so not as a broad appeal to a mass of people. I make this appeal to each of you as individuals. This is about you and you and you and me.

Judith Miller once wrote "The Holocaust was not six million. It was one plus one plus one."

And, so it is with the schools, the health care, the nutrition, the security-the very future of the people of Israel. It is up to each of us as individuals.

So write your checks, get yourselves educated and speak out, proudly and loudly. Keep the pressure on elected officials and make sure your friends and family in other states do the same.

Hon. Jack Markell serves as Treasurer for the State of Delaware.

Yachad

By Idan Kligerman

"...8? Where? 2? Kidnapped? Are you sure? oooooohhhhhhhh no ... what now?..." Overwhelmed!! Amazed! Not enough words!! This is how a shaliach or anyone with an Israeli flame inside him feels at times.

And how do we work from this on? What do you say to whom? And how come I need to consider my words? Clueless, yes, that's what I feel. The strongest urge I have ever felt to be in Israel or to help but just don't know how.

I am writing this and still am not sure that I should. I want everybody to know the terrorists real face. But, at the same time, I do not want to intimidate people from going and supporting Israel. It is a beautiful country with so much in it. I want them to see this amazing country and support the people there. Diaspora Jews and Israeli Jews- going through this one-of-a-kind situation- together.

If you want to understand the definition of together, you should go to Israel. The Hebrew word for it is "Yachad". This isn't just a word as it comes from another word, "Achad", one. Yachad means, in one word, that we stand together as one united people against all risks that may come. Yachad is the word that the commander shouts when his soldiers react to an offense. Yachad is the word used by neighbors who sit and listen to the news, Yachad is the word constantly used by the news reporters and anchors when they finish a story in the special newscast: "Stay with us, we are going through this Yachad." Yachad is the word that describes the embracing of families who have lost their loved ones or are waiting for them to come back if they have been captured or are on the battlefield. Yachad is what's going to be after this is over.

I want to shout to everybody "please let's do something!" and am afraid for the ques-

tion to come back: "o.k! What do you want us to do?" I don't really know and I am open to suggestions. But what I really don't want to happen is to go back to 4 years ago when we lost 4 years of a generation that missed their Israel experience. You probably think "yeah right, it easy for you to say" and I will answer back and say: "yes, because of this I am going back to Israel. My cousin is a fighter in one of the infantry divisions and has been serving his time in the Gaza strip and is now being sent to the northern border. He is there for his family and in order for me to be safe and for you to visit and connect your kids and grandkids to their roots first hand."

My sister is the cutest, smallest thing ever and she is on the front line as well. If these young kids can put their lives in danger on Israel's front line, I can go live and support Israel either by sending my kids or going to see the wonder for myself.

I just saw a beautiful Jewish movie that

was amazingly wonderful. It is called Keeping up with the Stein's. It's about a Jewish family preparing for their son's bar mitzvah. The young man is searching for the true meaning of this coming of age simcha while his parents are trying to make it THE event of a lifetime. The movie explores all of the stereotypes that concern a Jewish family where ever they would be. What I didn't like about this two-hour movie was that no mention was made of Israel.

Israel is the only valid "insurance card" to continue the heritage that we've thrived on. We fought for our beloved Jewish homeland so many times with so many victims. Let's be proud to support Israel. It is ours. It's safe. That's what we can do!

Let us be YACHAD, all of the People Israel!

Idan, from Arad, Israel, serves as Shaliach for the communities of Wilmington, DE and Cherry Hill, NJ.



Make your commitment to
Jews in need in Delaware,
in Israel and
around the world through
your capability gift to the
JFD Annual Campaign

Candle Lighting

August 4TH - 7:54 PM

August 11TH - 7:46 PM



Judy Levy



Phil Epstein



Karl Law



Carla Wianiewski



Zanna Tilson



**LEVY SCHWARTZ
AND ASSOCIATES™**

Welcoming you home.

*The team of
Levy Schwartz and Associates.
Knowledgeable professionals
who work together
"Welcoming you home."*

**levyschwartz.com
homes@levyschwartz.com
302.426.6111**



Prudential
Fox & Roach
REALTORS®
302.571.8855

An independently owned and operated member of
The Prudential Real Estate Affiliates, Inc.



Eileen Schwartz



Rachel Levy Abrams



Laura C. Robelen



Pat Derick



Linda Ballou



Quick Lane
TIRE & AUTO CENTER

All Cars & Trucks
No Appointment Necessary
Competitive Pricing



- Major Brand Tires
- Balancing & Rotation
- Lube, Oil & Filter
- Wheel Alignment
- Wiper Blade Replacement
- Struts & Shock Absorbers
- Minor Mechanical Repair
- Scheduled Maintenance

- Tune Ups
- A/C System Check
- Cooling System Flush
- Belts & Hoses
- Batteries
- Brake Repair

OPEN 6 DAYS A WEEK!

Manager: Steve Gaskin
 Hours: Mon. - Fri. 7am-6pm • Sat. 8am-3pm
 Located at Bayshore Ford
 4003 N. DuPont Hwy. (Rt. 13), New Castle, DE
 (Follow the signs to the new DMV)
(302) 651-9828 or
(800) 241-6644

Beautifully Detailed

Talleyville Towne Shoppes at Rt. 202 & Silverside Road
 Wilmington, Delaware ♦ (302) 477-4975



*Offering a wide selection of
 Invitations, Favors
 and Accessories
 for all styles and budgets
 with the highest level
 of customer service!*

Ask for details about our
20% Bar/Bat Mitzvah &
 Wedding Invitation
 Rebate Program

ISRAEL AT WAR

Let Them Know
They Are Not Alone.



Purchasing an
Israel bond
sends a message
of solidarity to Israel.

NOT JUST A BOND, AN ISRAEL BOND.



Development Corporation for Israel/State of Israel Bonds
 1500 Walnut Street, Suite 1302 • Philadelphia, PA 19102
 215-545-8380 • 800-752-5671
www.israelbonds.com

INSIDE DELAWARE

Jewish Women's Organizations honored

"...with a greatness of mind, possessing a heart overflowing with sympathy and kindness." That's how Barnett Gluckman described Rosa Topkis. And she was not alone because she was able to count on Nessie Tiger, Esther Finkelstein and other like-minded women who set about collecting funds and donated items to aid others in need. In time, they formed the Bichor Cholem Society in Wilmington. For more than a century, Jewish women in Delaware have organized themselves to support each other and Jewish communities both locally and abroad.

To honor their tradition of sympathy, care and kindness, the Jewish Historical Society of Delaware is presenting an exhibit, which opened July 31, 2006, at the Willingtown Square Gallery of the Historical Society of Delaware's Research Library. The exhibit, which will be on display through October 27, celebrates the accomplishments of Delaware's Jewish women's organizations. Featuring scrapbooks from Jewish Women International (B'nai B'rith Women), Hadassah and the National Council of Jewish Women, the display will also include materials from Bichor Cholem, ORT, Pioneer Women and Mizrahi Women.

Many of these organizations have through the years kept wonderful records and fabulous scrapbooks. Thanks to donations from Rose Reitzes, Celina Reiman, Barbara B. Keil and many,

many others, some of the activities of these organizations are extremely well documented. Among the many items that the JHSD is proud to display are such fun items as the Trivia Game of Greater Wilmington, designed by B'nai B'rith Women in 1986, and other artifacts that you are sure to enjoy.

The exhibit is open to the public at the Historical Society of Delaware, 505 Market Street, Wilmington, Monday from 1:00 p.m. to 9:00 p.m. and Tuesday through Friday from 9:00 a.m. to 5:00 p.m. Admission is free of charge.

The Jewish Historical Society of Delaware is planning to hold a tea at the Historical society of Delaware on September 19 to celebrate the achievements of these organizations and provide an opportunity for old friends to reminisce. Why not become a member today so that you'll be sure to hear about the Tea Party and the other exciting events sponsored by the JHSD? For further information, you can reach us by telephone at (320) 655-6232 or by e-mail at jhsdel@yahoo.com.

(Right) Esther Baer Finkelstein, and her children, Keffie, Rachael, Isaac and Lena, in 1893. One of the founding members of Bichor Cholem Society, her efforts on behalf of mothers and children in the community established traditions of Jewish women's organizations that continue today.



Albert Einstein Academy – a Technology Leader

Outfitted with topnotch hardware and software, a forward-thinking computer teacher, and a longstanding commitment to integrated learning, Albert Einstein Academy is Delaware's academic leader when it comes to technology. A series of significant changes are nearing completion that will solidify the school's standing as one of the state's most technologically-advanced academic institution for elementary school-aged children.

The recent upgrades of a new server, new PCs, printers and software are noteworthy, however, they merely set the stage for the innovative methods the teachers employ to teach and prepare the children for life beyond 6th grade. Albert Einstein Academy has always prided itself on its use of integrated learning, a method where students learn across multiple disciplines simultaneously rather than learning

each subject in isolation. The key strength of this method is that students learn practical applications of information and how to integrate their knowledge into the real world. Head of school, Dr. Jack L. Sparks shared: "The brain of a child is not compartmentalized the way we often think of school courses. At Albert Einstein Academy, we bank on the multiple-intelligences of the mind, and work to achieve multiple-learning simultaneously, the way the mind works. Imagine when an infant is acquiring language skills at 1 year old; she doesn't learn grammar, syntax, vocabulary and expressive language in stratified formats, but rather it all comes together in a unified way. So too should academic learning years later."

Bringing new technology to integrated learning opens up a world of opportunity and creativity for the

students. One example of this will be realized this year when 5th grade students apply their geography, history and research skills to develop Powerpoint slide presentations on archaeological sites in Israel. With fast computers, new software, and the guidance of IT Coordinator Rami Goren, the students are able to efficiently search the Internet for information, interpret and apply it to interactive presentations incorporating video and musical elements, if desired. According to Goren, "Our children are learning skills well beyond those taught in many local high schools. Moreover, they think learning is fun. You can see the pride in their faces when their projects are completed."

The technological savvy of Einstein alumni is helping them earn their place as top achievers when they reach middle and high school. When alumna Sarah Driban, now an 8th grade student in Visual Arts and Communications at Cab Calloway School of the Arts, began 7th grade, her computer teacher was astounded by Sarah's keyboarding skills and natural ability to integrate subject matter into complex Powerpoint presentations. Sarah reflects on 7th grade, "Because of my strong skills I was often paired with classmates who knew less. I helped them add special effects, like animation, while the teacher helped other students.

It was really cool because classmates looked up to me to help them."

Ira Horden, Albert Einstein Academy parent of 3rd graders Sylviann and Jacob and 9th grade alumnus Eli describes how the school benefits his children. "When Eli entered 7th grade at Garnet Valley, his skills in Powerpoint and Excel put him far ahead of his class when he needed to make presentations and reports. After seeing Eli's success, I'm even more excited about our younger children working in a brand new computer lab where they'll have the ability to work with the latest technology. At Einstein the children become comfortable with computers as tools for success, not just gaming devices. They learn how computers work and how to use them to assimilate information and present it in a new format. They are acquiring skills that will prepare them for future learning and working in a business world."

Albert Einstein Academy is committed to keeping faculty current on technological changes and software improvements. Mr. Goren provides regular in-service computer trainings to teachers so that they can incorporate computers into classwork. This past year the 4th grade students studied a unit on global warming where they integrated math, geography and computer skills by tracking world tempera-

tures over the last century. They completed this project in the classroom and at home, without guidance from computer teacher. Computing has become second nature throughout the school.

With the recent technological upgrades, many possibilities lie on the horizon. "There are so many exciting opportunities our children can take advantage of because technology is extensively used in the classroom," says Mr. Goren. Head of School Dr. Jack L. Sparks, confidently states, "Thanks to our school's commitment to integrated learning coupled with recent technological advances, our students are aware of the world around them and are ready to embrace the academic and professional challenges that await them after graduation."

Albert Einstein Academy is the Brandywine Valley's only Jewish Elementary Day School. Serving Delaware and Pennsylvania students from Kindergarten through sixth grade, AEA strives for excellence through a well-rounded curriculum in both general and Jewish studies. Albert Einstein Academy is accredited by the Middle States Association of Colleges and Schools, and is a constituent of the Jewish Federation of Delaware. For more information about the school, call Karen Moss, Director of Admissions and Advancement, at (302)478-5026, ext. 123, or visit us at www.aeacademy.org

Come Make a Splash!

in Ellen Feingold's new pool
August 13th 2pm-5pm (rain date August 20th)

Hadassah's Premier Legacy Event

for Young *JGirls ages 11-16 and their Mothers, Grandmothers, Aunts, or any other females who make a difference in their lives.

All Hadassah members welcome.

Kosher snacks provided. Please bring a towel.

*The JGirls Guide-The Young Jewish Woman's Handbook for Coming of Age.

This book answers the questions of our young adolescence and skillfully provides tools to help young girls grow up with a confident sense of self esteem and proud to be Jewish.

Books on sale at the swim party.

Hadassah donation requested to benefit the Shattuck Institute of Oncology for Breast Cancer Research.



Get a copy for the JGirl you love.

RSVP by August 7th, and for directions contact:
Susan Hoover 764-2653 susan@hoovercs.com
Elisa Ley 475-4677 elisaley@comcast.net

Melton News Notes

Summer Short Story Discussion

The Florence Melton Adult Mini-School will hold a Short Story discussion on Wednesday, August 16th at the Siegel JCC, from 7-9 pm. Cyra Gross will lead the discussion of "The Little Shoemakers" by I.B. Singer and "The Magic Barrel" by Bernard Malamud.

Copies are available for \$1/story at the front desk of the Siegel JCC. This event is open to the community. Please Register with Melton Director Lynda Bell at 302-478-5660 lyndabell@siegeljcc.org or Cyra Gross 302-475-3914 cyra711@aol.com.

Registration for Fall Session

Registration is open for the Florence Melton Adult Mini-School. First Year classes will be taught in Wilmington on Wednesday mornings and Thursday evenings, and in Newark on Wednesday afternoons. The two year curriculum, which will begin on September 20th, is Jewish adult education at its best. Register now and become part of the every growing Melton family of students. Call or email Melton Director Lynda Bell at 302-478-5660 lyndabell@siegeljcc.org for details.

GARAGE SALE

SHOP UNTIL YOU PLOTZ!

Congregation Beth Shalom, 1801 Baynard Blvd., Wilmington, is hosting its 2nd annual garage sale on Sunday, September 10th from 9:00 a.m. to 2:00 p.m. Come one, come all, come rain or come shine! There will be something for everyone!

25%-75% OFF*

Day & Evening Fashions
Shop early for the best selection.

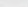
Claire's

Fashions Inc

*Selected in-stock merchandise only.
Excludes previous purchases and accessories.



amoena

Simply You 

www.simplyyouboutique.com

SALE, SALE, SALE,
All Summer Items 35% to 50% Off!

Monday - Saturday • 10am - 6pm
www.christinaballas.com

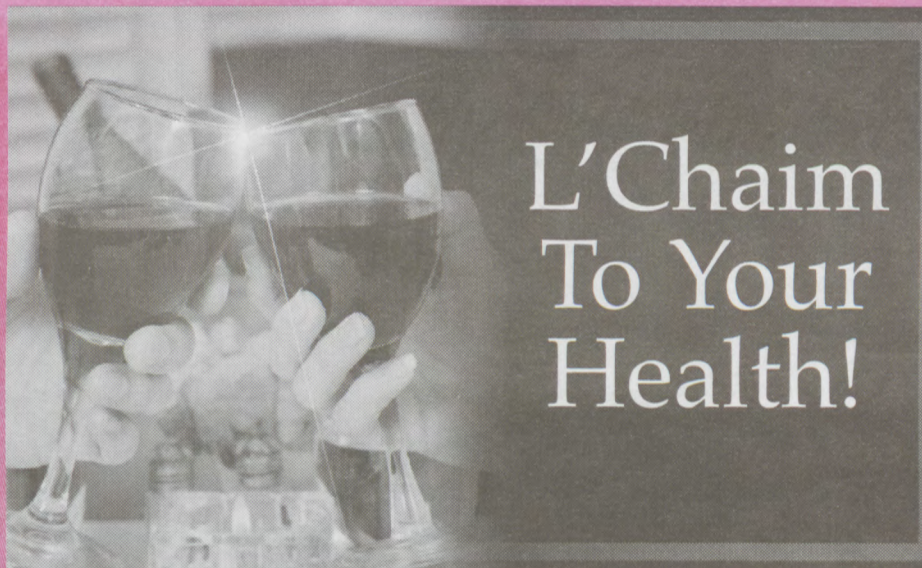
08/15/05 0000026219

Prices, payable by letter to: **Alpine 2000**, 600 per person, based on double occupancy and include everything you need: transportation, fuel, food and drink via 1200 3600 or other 1200 combined air carrier, hotel, breakfast, fuel tax, and baggage handling. Mountain views 14 days of enjoyment and \$99 per person. \$600 up to \$1400 00 00 00 and change. Alpine Inc., 10000 Highway 100, 10000 Highway 100, 10000 Highway 100, 10000 Highway 100, 10000 Highway 100, 10000 Highway 100.

INCLUDED!
CLEANING MAIDS GOTTA DO IT!

MONDAY - SATURDAY 2:30 - 5:30 • THURSDAY 'TIL 8

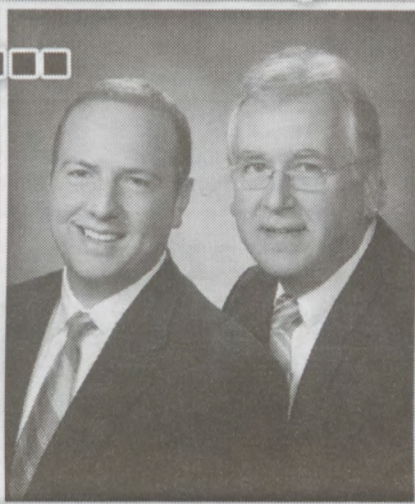
Holiday Begins September 22nd



L'Chaim
To Your
Health!

Like Father, Like Son...

With great pleasure, and tremendous pride, Bruce E. Matthews, D.D.S. announces the addition of his son, Daniel E. Matthews, D.M.D. to his dental team. "Dr. Dan" was born and raised in Wilmington, DE and was a graduate of the esteemed Archmere Academy. He received his Bachelor's degree from Georgetown University in Washington, D.C., went on to study at the University of Pennsylvania School of Dental Medicine, graduating in 2005 and just recently completed a General Practice residency at Christian Care Hospital Center. Dr. Dan Matthews, a member of the Academy of General Dentistry and the American Dental Association, looks forward to joining with his father and his talented staff to provide outstanding dental care to families in the greater Wilmington area.



Outstanding Dental Care:
*meeting your needs and
exceeding your expectations.*

Bruce E. Matthews, D.D.S., P.A.

Silverside Professional Park
1403 Silverside Road
Wilmington, Delaware 19810-4434

302.475.9220
Fax: 610.459.9210

K

THE KUTZ HOME

A Medicare and
Medicaid certified facility offering:

- 24-hour skilled nursing care
- Rehabilitation services
- Activities programs
- Kosher meals and snacks
- Sabbath and holiday services
- On-site beauty parlor

For more information about the Kutz Home, please call Sally Goodman, Director of Admissions at 302-764-7000 The Milton & Hattie Kutz Home, Inc.

704 River Road, Wilmington, DE 19809
www.kutzhome.org

KUTZ HOME

At the Kutz Home, growing older is recognized as a special time of life. Our trained staff cares for all the needs of our residents - medical, emotional, social, and spiritual. These needs are met with sensitivity and compassion, in an environment nurturing Jewish tradition and values.

Our residents receive the highest quality of skilled care and rehabilitative services, while maintaining a sense of personal continuity with family, friends, and community.

*To schedule a visit, please call Sally Goodman
Director of Admissions at 302-764-7000*

classical jazz standards...

philip berger music

- social or business functions
- fund-raisers
- celebrations

1.302.427.2251
wilmington, de

BU

Brandywine Urology Consultants, PA

Andrew J. Glick, M.D. Bruce N. Benge, M.D. Michael R. Lobis, M.D. David J. Cozzolino, M.D.
Steven A. Terranova, M.D.

Male Infertility • Kidney Stone Disease • Erectile Dysfunction • Lithotripsy
Vasectomy and Reversals • Prostate & Bladder Cancer • Incontinence • Brachytherapy

1081 Rockland Road
Suite 300, Wilmington (between 202 & DE 141)

2600 Summit Bridge Road
Glasgow Medical Center, Suite
Newark (between US 40 & DE 896)

Please Call 302-652-8990 to schedule an appointment, Fax 302-652-8646
Visit us at www.urologychannel.com/brandywine or www.MDhub.com

PERSPECTIVES

Across the Green Line and Into the West Bank

By Connie Kreshtool
Special to the Jewish Voice

Delegates to the 35th World Zionist Congress had the option of choosing from among nine field trips. I selected the trip that took me to two settlements located over the Green Line. We rode in an armored bus with two security persons accompanied by an army jeep with four soldiers. I did feel safe as we traveled north out of Jerusalem on the Ofra Road along the "security fence." In some places it is a barbed wire fence and in other areas a wall not dissimilar from the sound barriers on our interstates but very much higher. Our first stop was at Eli; it is a settlement high on a hill established in 1984, currently with a population of 600 families, religious and non-religious and primarily French and Russian. At the time it was first settled there were no local Arabs in the area. Neat, small red-tile-roofed single homes and schools, synagogues and a yeshivah make up the community.

Eliana, a young resident of Eli,

told us that the majority in the town commute daily to Jerusalem and Tel Aviv. She spoke glowingly of life in Eli with its wild flowers, animals and its history. She quoted a young friend who was killed by Palestinians on the Ofra Road just outside Eli's entrance: "The Tanakh is alive before our eyes." For it was here that Joshua established the capital of Israel and assigned this area to the House of Joseph to Ephraim and Manasseh. In 1867 Mark Twain visited this region and wrote "nothing is here." After 1967 the Israel Government said it was all right to settle in the area but now it is to be part of the "convergence" plan. But Eliana said that it is a growing settlement and they are still building and are carrying on as if there is to be no change.

Our next stop was a few miles away on a neighboring hill at Shiloh. This is where Joshua after the sojourn in the desert set up the first sanctuary that remained for 369 years before Philo destroyed it.

In 1978 families from all over the world established the set-

tlement there and today Shiloh has a population of 250 families. Most are religious and have as many as twelve children. Many commute daily to the cities. Shiloh has suffered from terrorist attacks on the roads. David, our resident guide, told us about being ambushed and his son's serious injuries. The community is very proud of the replica they have built in stone of the mishkan, the tabernacle that Moses and the Children of Israel built in the desert. The Shiloh residents believe that they "have to reclaim the historic land of Israel." We met three generations of a family that made aliyah four years ago from Atlanta. They related how they sent their children to Israel for the summers and initially had no plans to immigrate. But when they visited Shiloh they knew immediately that was where they should be.

Some critics of this particular field trip felt it was a propaganda ploy to gain sympathy for these settlements initially sanctioned by the government. They are now proposed for convergence with one of



Ancient remains atop Tel Shiloh, central sanctuary of the Israelites in the time of the Judges.

four settlements that Israel wants to keep in the West Bank. There is no doubt that Eli and Shiloh provide an attractive and meaningful way of life for the families that live there. But there are questions. What will happen if the government goes through with disengagement?

What will the settlers do? Will they follow their rabbis who say Israel's strength is its spiritual strength; and; you do not have to obey the government? I am afraid there is going to be some real soul-searching and perhaps even violence before any changes can be made.

JNF-KKL Firefighters battle fierce blazes in Northern Israel

Since the start of the conflict in Israel, approximately 2,500 acres of grazing land and 1,500 acres of forests have gone up in flames, destroying over half a million trees and reducing the green landscape of northern Israel to a scorched wasteland.

Jewish National Fund - Keren Kayemeth LeIsrael firefighters have been working around the clock to battle the fires ravaging the northern countryside, risking their lives as Katyusha rockets fall around them.

Through JNF's Operation Security Blanket, over \$2,260,000 has been raised to purchase safety equipment and fire trucks to support firefighters and emergency response personnel. Donations are also being used to send children living in areas under rocket

attack to JNF-KKL summer camps in central Israel as well as to build security bypass roads along the Gaza border.

"There were people I didn't expect to see here," said Andy Michelson, Director of the American Desk at KKL, who volunteered with JNF-KKL firefighters last week. "JNF-KKL foresters from all over the country had come to the north to fight these fires. Nobody told them to come. In fact, they were told not to come — it's too dangerous — but come they did, with their equipment, their experience and their energy."

"I continued to watch the teams arrive. Groups of men, tired, dirty, smelling of smoke, but mostly tired. As they walked from their vehicles towards the tent I saw the 'fresh' crews ready to replace their

colleagues. There were smiles, words of encouragement, and a camaraderie that Israelis know all too well."

"Just before we left," said Michelson, "I was introduced to Yossi Biton, a second generation JNF-KKL forest ranger. His father had planted the Biryia Forest in the early 1950's and he was battling to save his father's work, literally watching it go up in smoke."

In addition to the usual dangers of battling fires, JNF-KKL firefighters must now contend with undetonated explosives and the threat of constant rocket attacks.

"As we were driving through the Biryia Forest, looking at the devastation that the fires had caused, we heard the air raid siren signaling that another attack was under way," said Michelson. "Wearing our



vests and helmets, we crouched down by the side of our vehicle and waited. The siren usually sounds between 30 to 60 seconds before the missiles impact, so we just looked at each other. What does one say as one waits to see or hear an incoming missile?

"The missile fell on the next hill. The siren stopped, and already we began to see the smoke. A fire had started. The forests are dry, we are in the middle of summer and it takes only a match to set off a fire."

Donations to Operation Security Blanket have been used to purchase fire trucks, vital safety equipment including shrapnel-proof flexible vests and ceramic helmets, and a special fire-retardant chemical that slows the spread of fires and prevents trees from releasing flammable gases that increase fire intensity.

"Our last visit for the day was the Rosh Pina Airport," said Michelson. "It is from there that

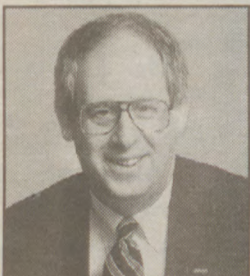
the planes depart with the 'red slush,' a chemical imported from Europe that, when sprayed on a forest, sticks to trees, grass, and land, stopping them from burning. We had seen their work earlier: fires stopped in their tracks, a red film covering everything — trees, roads, cars, people."

Jewish National Fund is a non-profit organization founded in 1901 to serve as caretaker of the land of Israel, on behalf of its owners — Jewish people everywhere. Over the past century, JNF has planted over 240 million trees, built over 180 reservoirs and dams, developed over 250,000 acres of land, created more than 1,000 parks, provided the infrastructure for 1,000 communities and educated students around the world about Israel and the environment. For more information on Jewish National Fund or to donate to Operation Security Blanket, visit <http://www.jnf.org/> or call 888-JNF-0099.



BUSINESSES & PROFESSIONALS

PHILIP BERGER



Expert Service Since 1969

**Weichert,
Realtors**

**"No one Works Harder
to Give You
Great Service"**

3302 Concord Pike, Wilmington, DE 19803
Off: 302-478-3800 Res: 302-427-2251

BOYD'S FLOWERS

Famous For Fine Flowers

421-2900

824 Market St. Mall
2013 Penna. Ave.

www.boydsflowers.com

Regina Kovitz

"Your Connection to Kent County"

1054 South Governors Avenue
Dover, DE 19904

Office: 302-678-4308
E-mail: RKovitz@Remax.Net
Fax: 302-678-4305

**RE/MAX
Horizons**
302-678-4300 ext.117



Living Letters Studio
Serving the Community Since 1976 for
"When the Everyday Just Won't Do..."

Bar/Bat Mitzvah Parsha Gifts, Ketubot, Calligraphy,
Custom Picture Framing, Original Art by Riva/Scarlet

Call 302.656.2777 or 800-653-8992 for an appointment.
Riva Brown • Bill Brown
1328 Washington St., Wilmington De
www.livingletters.biz

Phone
(302)
998-2257

• Heating • Air Conditioning
• Humidifiers • Air Cleaners • Boilers

Hentkowski, Inc.

"Your Key To Comfort"
Heating & Air Conditioning

3420 Old Capitol Trail Wilmington, DE 19808
www.hentkowskiinc.com



Barbara Levy

Certified Residential Specialist
Accredited Buyer Representative
Certified International Property Specialist
Internet Professional

Licensed Broker in DE, PA, MD

"A satisfied client is
my #1 priority"

Direct Line: (302) 529-2626

Home: (302) 475-6786

blevy@psre.com

www.barbara-levy.com



Office: (302) 475-0800

full time
eighth generation
Imohel
משה



joel h. shoulson
35,000+ performed
1-800-700-joel (5635)
www.moheljoel.com

New Castle Farmers Market

Come out for a day of family
fun and shopping bargains
**DON'T MISS
DELAWARE'S
BIGGEST & BEST
FARMERS MARKET
& FLEA MARKET**

Voted Best of Delaware
FRI. & SAT. 10 A.M.-10 P.M.
SUNDAY 10 A.M.-6 P.M.
Rt. 13 (across from Wilmington Airport)
New Castle, DE 328-4101

WSFS bank

30 Blue Hen Drive, Suite 200
Newark, Delaware 19713
www.wsfsbank.com

Diane Berger
Mortgage Loan Officer
302-283-4536
fax 302-283-4696
cell 302-547-2376
berg0641@comcast.net

Wilmington Savings Fund Society, FSB



**Marlene
Davis**

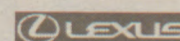
302-529-2838
mdavis@psre.com



2211 Silverside Road,
Wilmington, DE 19810

Realtor® Licensed in DE & PA

For New and Pre-Owned Certified



Larry Nolly
302-427-4400
800-456-5398

Sales and Leasing *Maven*

Lexus of Wilmington
Serving all of Delaware and the Greater Philadelphia Area

Finally,
there is
a solution...

Pain Relief from Auto & Work Related Injuries

KELMAN Chiropractic Center

- Same Day Appointments Available
- Participating Provider-Most Insurances
- Family Practice-Medicare
- Day and Evening Hours
- Emergency Appointments



www.kelmanchiropractic.com
PRICES CORNER VICINITY
3722 Old Capitol Trail

998-2060

The Zutz Group

INSURANCE

Since 1940

Personal, Business and Professional Insurance
Life, Health, Disability and Other Benefits Coverages
Specialists in Unusual Risks

300 Delaware Avenue, 16th Floor
Wilmington, Delaware 19801
Voice 302.658-8000 800.441-9385
Fax 302.658-8015 www.zutzgroup.com

"Your Protection is our Profession"

NEXT ISSUE

September 15th

Rosh Hoshanah

Holiday Begins Sept. 22nd

Deadline:

September 7th

We Stand With The People Of Israel THE MONTEFIORE MUTUAL BENEFIT SOCIETY

Delaware's Oldest Jewish Organization

P.O. BOX 7186 WILMINGTON, DE 19803-0186

President, Bill Weissman
Secretary, Ed Simon Financial Secretary, Fred Chalawsky
Treasurer, Fred Rosen Cemetery Co-ordinator, Jeffrey Lew

**"What are your lifetime and legacy goals for your family?
Do you have a clear road map to help secure their financial future?"**

Let Ginger Weiss and the Creative Financial Group give you the power to accumulate and help protect your wealth for the benefit of those you love, and help you develop the assurance that comes from knowing that the future of your loved ones is secure.

Ginger Weiss
Creative Financial Group - Wilmington

2711 Centreville Road
Suite 108
Wilmington, DE 19808
302-993-1285 Phone
302-993-0156 Fax

gweiss@cfg.nef.com

Ginger Weiss is a Registered Representative of and offers securities through New England Securities, NES Branch Office: 16 Campus Boulevard, Suite 200, Newtown Square, PA 19703 (610)325-6100. (CD200500533, exp 1/31/2007)



BERGER BROS INC.

Since 1919

OFFICE FURNITURE-OFFICE SYSTEMS

Come visit us at our new location. Our new address is: 100 Paper Place, New Castle, DE

"Growing larger to serve you better!"

Hours 8:00 to 5:30 Sat. 8:30 to 12 noon

Call (302) 655-7166

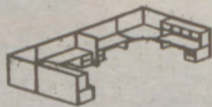
DESKS & CHAIRS

Bernhardt • Council Craftsman • Krug • Miller
Stylex • La-Z-Boy • Hon • United Chair • Global
Bolling • Jafco • St. Timothy • Hekman • Much, Much More!



OFFICE SYSTEMS & COMPUTER FURNITURE

ASE • Helikon • ABCO • Trendway
Tiffany • Hon And More!



Weichert®
Realtors

BERNIE FREIMARK
BROKER

Weichert Hall of Fame

Company Wide Top Listing Awards
President's Club

Office: (302) 478-3800
31 years of selling Real Estate

BRANDYWINE OFFICE
3302 CONCORD PIKE
WILMINGTON, DE 19803



Thanks
for Supporting Our Advertisers!

THANKS!



*Open Invitation
to visit*



www.calsnet.ne/seasidejewish

Holland Glade Rd.
Rehoboth Beach
302-226-8977

Services:
First Friday
of the month
at 7:30pm

Third Saturday
of the month
at 10am

Adult & Youth
Education,
Holiday Programs,
and Social
Activities also
Available!

OCEAN RIDGE WEST BETHANY BEACH



Offering coastal living at its finest, this 4 bedroom 4 bath custom retreat boasts magnificent sunsets and unparalleled bay and wetland views. This canal front home with a brand new boat dock has easy beach access as well as community pool and tennis. This residence has an open floor plan, vaulted ceilings, and an expansive great room with an abundance of windows. Decks and porches on all levels afford the finest of outdoor living and relaxation that one expects at the beach.

HOWIE WINSTON

Sales Associate

Office: (302) 539-9040

Fax: (302) 539-4939

Toll Free: (800) 228-8833

Cell: (302) 270-1154

"Specialist in Sea Colony Resales"



**YOUR BEACH
CONNECTION**

**SERVING THE DELAWARE &
MARYLAND BEACHES**

Bethany Beach needs a Larger Minyan!!
E-Mail: Howie.Winston@longandfoster.com
BETHANY BEACH OFFICE 1150 Coastal Highway, Bethany Beach, DE



Jeffrey P. Stape
Owner/Broker

**Jack
STAPE**
REALTORS

CAREFUL SERVICE SINCE 1950

(302) 656-6661 Phone
(302) 656-6663 Fax

jeff@jackstaperealtors.com
www.jackstaperealtors.com

1601 Concord Pike • Suite 52 • Wilmington, DE 19803-3602

DELAWARE GOES TO ISRAEL

Netanya Family has Wilmington connection

By Meredith Price

As their two youngest children play next to them on the couch with Paisley, the family dog, Dan and Esti Allina-Turnauer explain how they met in Israel after they had both made aliya individually.

"A friend of mine kept telling me she wanted to give this great guy Dan my number, but she kept forgetting, so I finally asked her for his," says Esti, who called Dan for a blind date. Esti says she knew by the end of the first night that this was the man she would marry.

"Two and a half weeks after we met in 1992, we took a weekend bike trip to Rosh Hanikra and at the end of the trip we got engaged," Esti says. "I haven't been able to get rid of him since."

BEFORE ARRIVAL

Esti, the daughter of Sandye and Gerald Turnauer, grew up in Livonia, Michigan and Wilmington, Delaware in a close-knit family. She attended the University of Delaware before her move to Israel.

"My parents always said if it's not unethical and it's not illegal, go for it," Esti says. "Besides, they knew it would be futile to try and stop me."

Dan's upbringing was less stable. He moved back and forth between Colombia and Canada until age 15, and then spent two years in Zaire when his mother was sent there to work for the Canadian embassy. While in Zaire, he met a German family and decided to apply to university in Germany, where he studied for one year and then worked for four years as a computer programmer. In 1984, he went to the US and got a degree from Hampshire College in Amherst, Massachusetts in medical anthropology. Before making aliya he worked as a paramedic.

FAMILY HISTORY

"My parents divorced when I was one year old, and I never knew my father," Dan says. "He was born in Vienna and was a survivor of Auschwitz. He immigrated to Colombia with his parents and an adopted sister (whose mother had asked that they care for her before being sent to the gas chamber) when he was seven."

"My father married my mother at the age of 21 when she was just 14, but after they sep-

arated, I did not have any connection with him until 2000, when I found his name through an Internet search. I then learned that he had remarried and I have three half-brothers," Dan says.

Dan's mother passed away in Panama two and a half years ago, and his brother lives in Canada.

UPON ARRIVAL

Esti made aliya at the age of 22 in 1987, participated in the para-military course "Marva" and found a job teaching English in a high school in Bat Yam.

"I always felt like a fish out of water in the US, but from my first visit here in 1983, I was at home," says Esti, who explains that six months after her college graduation, she made aliya.

Dan, who made aliya in 1990, says the seed was planted while he was studying in Germany.

"I met an Israeli woman at the university who was a guidance counselor and she encouraged me to come to Israel," says Dan. "Something was always missing in my life, and I had a strange Zionist connection to Israel because of the Holocaust, so I thought that maybe I would find what I was looking for here."

Today, Dan and Esti are raising four boys of their own in Netanya: Yonathan, 11, Adam, 9, Avraham, 6 and Aharon, 4.

LIVING ENVIRONMENT

By next Purim, the family hopes to move into a new apartment in Netanya.

"We've owned two other apartments, but we've never had a brand new one, and something about picking our own tiles and colors makes it feel more like our own," says Esti.

For the last seven years, the family has lived in what was once considered a strictly religious neighborhood but is today somewhat mixed.

RELIGION

"If we have to label it, although I am not fond of tags," Esti hesitates, "I would say we are modern Orthodox."

She explains that she came here for spiritual and religious goals: "I grew up in a traditional, conservative religious household and attended an Orthodox Hebrew school, Adas Kodesh Shel Emeth in Wilmington. By the time I made aliya I was Shabbat observant and kosher. I attended synagogue on a regular

basis, but not much more than that."

IDENTIFICATION

"I would say I'm Israeli-American or American-Israeli," says Esti, who adds that although she is culturally American, when she visits her family in the US she realizes how Israeli she has become.

As a Colombian native with perfect English, Dan confuses people in Israel.

"I don't really know how to define my identity," Dan says. "I guess I feel European, but without any real basis for it."

LANGUAGE

Although Dan and Esti insist on speaking only English at home in order to develop the skills of their four bilingual sons, both are also fluent in Hebrew. Dan is a native speaker of Spanish and also knows German from his grandparents and French from school.

WORK

For more than 10 years, Dan has worked at Bar-Ilan University in Ramat Gan. Esti worked as a secretary until shortly after their marriage, and then worked as a content writer for an educational program to teach English as a second language. She has been an at-home mother since her first child was born, and having studied reflexology and iridology, she is currently working on two on-line businesses from home.

"Both companies are multi-level marketing, but the products differ. One centers on neutralizing electromagnetic fields and the other is all natural-based nutrition and chemical-free household and personal care products," says Esti.

ROUTINE

Dan works from Sunday to Thursday at Bar-Ilan.

"I usually leave at 6 a.m. and return by 4 p.m.," he says of the daily commute. "We just



The Allina-Turnauer family relax in their Netanya, Israel home.

bought our very first car and not having to take public transport has changed our lives."

Esti sends the kids to school and gan, says her morning prayers and then works out for an hour before taking care of the house, walking Paisley and spending time on her businesses.

CIRCLE

"Most of our friends are Anglos," says Dan. "We live in an area with about 50 Anglo families, so we have formed our own small community." Esti says when she was younger she had more Israeli friends, but making connections with the tight-knit groups of Israelis who grew up together was always difficult for her.

PLANS

"My dream is to raise my children and gain financial security for my family," says Esti. "And I want to travel and learn new languages in the future."

For Dan, the family has taken giant steps forward in the last six months towards fulfilling his dream of feeling comfortable in a home and being more settled.

"With the purchase of the car and our new apartment, things are moving in the right direction," says Dan. "We have contemplated living elsewhere in the past, but always decided against it. We want our boys to be Israeli and we are living our dreams just by being here."

This article was reprinted, with permission by the author, from the Jerusalem Post

And They're Off

Volunteers Get Ready for A Night at the Races

Volunteers recently gathered at the home of Annette and Bob Aeronson for a pep rally in support of a major fall fundraiser for the Bernard and Ruth Siegel Jewish Community Center. Harry's Savoy Grill Presents-A Night at the Races will be staged on Saturday, September 30, 2006. Gates will open at 7:30 p.m. at the Siegel JCC for a full evening of racing action. Racing enthusiasts will enjoy food and drink, wagering on 12 thoroughbred races and prizes galore. For information on sponsorship packages and tickets, please contact Wendi Weingartner, (302) 478-5660, ext. 203 or wendiweingartner@siegeljcc.org.



Does Albert Einstein Academy focus on academics, athletics, or Jewish knowledge?

Yes.

As a parent, you don't have to choose between providing your child with a strong academic background or a positive personal identity.

The Albert Einstein Academy strives for excellence through a well-rounded curriculum in both general and Jewish studies. Our experienced faculty emphasizes mathematics, English, science, technology, art, athletics, music and social studies while enriching each child's education with Jewish history, text, values and Hebrew language.

Want to learn more about how your child can flourish at AEA? Call Karen Moss, AEA Director of Admissions and Advancement at 302-478-5026 x123.

**ALBERT
EINSTEIN
ACADEMY**

101 Garden of Eden Rd.
Wilmington, DE 19803
(302) 478-5026
www.aeacademy.org

MILESTONES

In Memoriam

AINBINDER

Zarah Aibinder, 69, died on July 29, 2006 after a long and brave battle with cancer.

Born in the Williamsburg section of Brooklyn, NY, he graduated from Brooklyn Technical High School in 1955, a school he dearly loved. He received a Ph.D. in Chemistry from the University of Chicago in 1963. He worked for the DuPont Company as a chemist and, later, as a Patent Agent in the Central Research Department, a job which gave him great satisfaction and for which he was eminent-suited. He retired in 2000.

A passionate advocate for public education, he served as a past member of the Brandywine School Board and a current member of the Brandywine Citizens' Finance Committee. He was President of the Adas Kodesch Shel Emeth School Board and a member of the Gratz School Committee. He took classes, and was a teaching assistant at the Academy of Lifelong Learning.

Zarah was married for 44 years to his loving wife, Harriet. He is remembered by his 2 daughters and their husbands, Richa (Michael) and Alisa (Ted); and by his 2 grandchildren, Rebecca and Lillian, whom he adored. He was predeceased by his parents; and his sister, Edna.

A memorial service was held at Adas Kodesch Shel Emeth Congregation on July 31, 2006 with interment in the Jewish

Community Cemetery on Foulk Road. Shiva will be observed at the Aibinder residence on Saturday evening, August 5, at 8:30 pm.

The family would appreciate contributions in his memory to Adas Kodesch Shel Emeth Congregation, Washington Blvd. and Torah Way, Wilmington, DE 19802.

BUDIN

Edward Budin, age 94, passed away peacefully on Sunday, July 23, 2006, at the Kutz Home.

He was born April 9, 1912 in Philadelphia, PA, but lived his whole life in Wilmington, DE. Ed graduated from the University of Delaware during the Depression, and worked for the CCC until the establishment of the Social Security Administration, where he worked until serving in the Pacific Theatre during WWII. During most of his career, Ed and his wife, Etta, owned and operated liquor stores in Wilmington. After retiring, he volunteered for many years at St. Francis Hospital and A.I. duPont Hospital for Children, and called bingo at the Kutz Home. He was longtime member of Congregation Beth Emeth, where he served on the board of Beth Emeth Memorial Park for many years, and a member of the Jewish War Veterans. Ed's sweet temperament, generosity and loving hear will be missed by all who knew him.

Ed was predeceased by his wife of 65 years, Edwina Scher Budin. He is survived by his 3 children,

Ellis, of Wilmington, Arnold (Gail), of West Bloomfield, MI, and Ethel Parsons (Don), of Wilmington. He is also survived by grandchildren, David Budin, Sara Budin, Ross Budin (Julie), Evan Budin, Anne Parsons and Elliot Parsons (Melissa); great grandson, Cole Budin; sister-in-law, Signa Scher; and a host of nieces and nephews.

The funeral was held on Tuesday, July 25th, at Congregation Beth Emeth.

Contributions in his memory may be made to Congregation Beth Emeth, 300 West Lea Blvd, Wilmington, DE 19802; the Kutz Home, 704 River Rd., Wilmington, DE 19809; or to Delaware Hospice, 3515 Silverside Rd., Wilmington DE 19810.

FERTIG

Seymour Fertig, age 86, died Friday, July 28, 2006.

Mr. Fertig was born September 7, 1919 in New York. Seymour served in England during WWII as a Sergeant in the Army. On his return, he met and married Mildred Stargot, with whom he spent nearly 64 years. After working in New York, the couple moved to Wilmington, DE where he became a buyer and manager of the infants and children's department for Wilmington Dry Goods. He was a member of Congregation Beth Emeth and B'nai Brith. He lived on 37th Street before moving to Rockland Place.

A devoted father, he will be

missed by his two sons, Andrew of Knoxville, TN and Howard and his wife, Rebecca, of Atlanta, GA.

Funeral services were held on July 30, 2006, at Schoenberg Memorial Chapel, 519 Philadelphia Pike.

The family would appreciate memorial contributions to Congregation Beth Emeth Building Fund, 300 W. Lea Blvd., Wilmington, DE 19802.

MESSING

Sam D. Messing, formerly of Wilmington, DE, died July 23, 2006, in Boca Raton, FL.

Son of the late Oscar and Lena Messing, and brother of the late Gladys Garay, Sam is survived by his wife, Shirley; and children and their spouses, Rabbi Marc and Eve Messing, Jeff and Barbara Messing, Lisa and Artur Anbild, and Scott and Jen Messing. Other survivors include 7 grandchildren; 4 great grandchildren; his sister and brother-in-law, Julia and Bernard Lenoil; and brother-in-law, Harold Garay.

A service was held on Tuesday, July 25, at the Schoenberg Memorial Chapel, 519 Philadelphia Pike, Wilmington. Burial was in the Jewish Community Cemetery on Foulk Rd.

In lieu of flowers, contributions may be made in Sam's memory to AKSE, Washington Blvd. & Torah Way, Wilmington, DE 19802; Congregation Shomrei Emunah, 6221 Greenspring Ave., Baltimore, MD 21209; or to the American Parkinson Disease Association, 135 Parkinson Ave., Staten Island, NY 10305.

NATHANS

Barbara Lange Nathans died June 19, 2006 at her home in Coronado, CA. She was 74 years old and died of melanoma.

Barbara was born April 26, 1932 in Wilmington, DE. She received a BA degree from the

University of Delaware. An accomplished textile and bead artist, she lived in Bellport, NY, and later moved to Coronado, CA.

She was the wife of Robert Nathans; sister of Judy Lange Topkis and H. Bruce Lange; and mother of Mark, Leah, Jessie, Sam and Amy. She was also the grandmother of 9.

A memorial service is planned for the fall.

Donations in her memory may be made to the San Diego Creative Weavers Guild, PO Box 80014, San Diego, CA 92138; or to the Skin Cancer Foundation, 245 5th Ave., Suite 1403, New York, NY 10016.

SIMON

Ida B. Simon, age 92, of Wilmington, DE died July 30, 2006. She was the widow of Lewis E. Simon and was predeceased by her daughter Gale. She is survived by her daughter, Linda Berger of Mesa, AZ and two grandchildren.

A graveside service was held on Tuesday, August 1, 2006 in the Jewish Community Cemetery on Foulk Road.

The family suggests contributions to charity in her memory.

WAX

Elaine Wax, 66, of Deptford, New Jersey died on July 24, 2006. She is survived by her son, Steven and his wife, Beth; her daughter, Cheryl and her husband, James Kaut; her mother, Rhea Golden; grandchildren, Austin Kaut, Rachel and Rebecca Wax. She was predeceased by her father, Paul Golden. Graveside services were held on Wednesday July 26th in the Jewish Community Cemetery on Foulk Road.

The family would appreciate contributions in her memory to the American Cancer Society, Suite 205, 92 Reads Way, New Castle, DE 19720 or to your favorite charity.

SAFE HAVEN

Continued from page 1

That morning, I had called City Hall. Marina Glazer, who in "normal" times manages the Department of Absorption for the city, took my call. She had been appointed to deal with coordinating between volunteer host families and people arriving from the North. That same day, the Mayor of Arad, Dr. Moti Brill, had sent an open invitation to all the Northern municipalities to direct those residents who wish to leave the area to Arad.

A Day Camp for the children has been opened and is offered free of charge to families from the North. It is truly amazing what is being done by the remarkable residents of Arad.

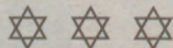
Masha's husband, Dima, could not leave Haifa for fear of losing his job and so, for 12 days, Masha has been in Arad worrying with each rocket launching for her husband and home. In these 12 days, Masha and I have become close friends. Her 9 year-old has bonded with Bruce and me. Both her sons have met up with friends and classmates from home who also made their way to Arad. Yesterday, Igor celebrated his 9th birthday sharing his chocolate birthday cake with us and opening his presents with delight.

A few days following the arrival of Masha and her family, I received a call from a colleague. By now, hundreds of families had volunteered their spare rooms and pull-out sofas for our Northern guests. My friend had no more room in his home to host family friends who had left Haifa and were already

making their way South. One quick phone call to Nili Avrahamy and the problem was solved. Nili immediately opened up the apartment used by the Living Bridge Committee for visiting volunteers from New Jersey and Delaware. A family of nine - including two grandmothers, parents and young children found refuge in a two room apartment. Shimon Shamila, Nili and I went to visit them at the beginning of this week. By then, three more family members had joined them, bringing with them a stack of mattresses to allow for more people to share the minimal space in the apartment. The Poliker family is a lovely family from Haifa. They are grateful for the space Partnership 2000 has offered them. They were so touched by the openness and generosity

and amid all the chaos and concern for family and property, they remembered to bring as a token of their appreciation a beautiful decorative ceramic piece which will be displayed lovingly in the Partnership office.

Israel is going through a very difficult battle right now, one which will take some time to play out. The Northern cities and their residents have become targets of the Hezbollah. It will take some time for life in Haifa, Carmiel, Zefat, Tiberias, Kiryat Shmona, Metula and dozens of other cities, towns and villages to get back to normal. Arad has given these people a hiatus, a feeling of security and a little normality during this difficult period.



Save the Date

Thursday, Sept. 14
7:00 PM
Candidates Forum

Jointly sponsored by the
Wilmington Chapter of
Hadassah and the
Jewish Community Relations
Committee of the Jewish
Federation of Delaware

Meet the candidates for statewide office in Delaware and learn how they stand on issues of import to you.

For additional information, please call Karen Venezky at 302-427-2100, ext. 19.

Schoenberg Memorial Chapels



In the hallowed tradition of our faith...

a dignified setting with reverence for customs and observances in strict accord with family wishes.

519 Philadelphia Pike
762-0334

CECIL VAULT & MEMORIAL CO.

FAMILY BUSINESS FOR OVER 50 YEARS

CONNIE & DAN CECIL

5701 Kirkwood Highway - Wilmington, Delaware 19808

(302) 994-3806 Toll Free 877-994-3806 Fax (302) 994-3232

MONUMENTS

Granite: We use only the best granite available

Bronze Markers, Marble & Mausoleums

Flexible Payment Plan Available

Inscription Work Provided

COMING EVENTS

You are invited to a special Aliyah House Sale. Sharon, Michael and Joseph Rosenblatt are preparing to make aliyah to Israel on September 4th. In preparation for their move, the family plans a house sale on August 13th from 9 am until about 3 pm. Cash only please. If you have questions or need more information, please call at 762-0910.

Dawson's fresh kosher fish comes to the JCC! The reviews are in and everyone loves Dawson's fresh kosher fish. And to make it even more convenient, the fish is now being delivered to the JCC (front desk) on Thursdays around noon and can be picked up until 9 PM. Call in your order to Dawson's, 658-4238 on Tuesday, Wednesday or Thursday morning, come to the JCC to work out or for a swim on Thursday, and have fresh kosher fish that night! For more information or if you would like to receive a weekly list of what fish is available, call Cantor Joel at 762-2705 or e-mail him at jkessler48@comcast.net.

Considering Becoming a Jew By Choice? Once again the rabbis of the community are offering "Introduction to Judaism" classes for those considering choosing Judaism. These classes begin with an orientation session on Tuesday, September 5 at 7:00 at Temple Beth El, 301 Possum Park Road, Newark, Delaware, at which time Rabbis Michael Beals of Beth Shalom, Peter Grumbacher of Beth Emeth, and David Kaplan of Beth El will explain the curriculum and requirements of this program which has been an integral part of the Jewish community for over two decades.

Classes include, but are not limited to, Basic Beliefs, Comparative Religion, Liturgy and History and run from after the Holydays into the spring. Graduates receive a "diploma" indicating their completion of the program. If they choose to continue towards conversion they pursue private instruction with their sponsoring rabbi. Everyone registering for the program must have a sponsoring rabbi so it is suggested that interested persons contact one of the rabbis before the orientation; so, too, if there are any questions about the Introduction to Judaism classes in general.

Planning to Celebrate a Simcha? Harry's Savoy Ballroom welcomes all to participate in their Mitzvah Expo, Sunday, October 29th from noon to 4 p.m. Vendors from all venues will showcase everything necessary to plan an affair to remember. Complimentary food and beverage will be served. Call Marge Gilbert at 302-475-3000 to make your reservation.

MOCA 2006 International Event:

Adirondack Aliyah. August 31-September 4, 2006 at Brant Lake Camp, Brant Lake, NY. Join 200 Jewish Outdoor enthusiasts from all over the US and Canada for hiking, biking, rafting, canoeing, kayaking, horseback trail rides, rock climbing, mineral collecting, sightseeing, nature exploration, spelunking, swimming, tubing, sailing, lake cruises, and much more in the Lake George and "Chai Peaks" regions of the Adirondacks! Price is \$365M/\$415NM through 7/31 then will increase by \$50 through 8/19. Don't delay! Details and registration information can be found at www.mosaicevent.org. Contact aliyah@mosaicevent.org or call 888-MOSAICS with any questions (please only after 10 a.m. and before 9 p.m. EDT).

Lincoln University to host Jewish Literature Series. Lincoln University's LANGSTON HUGHES MEMORIAL LIBRARY will host a free and open-to-the public five-part reading and discussion series exploring the theme of Between Two Worlds: Stories of Estrangement and Homecoming. This is part of a program called "Let's Talk About It: Jewish Literature - Identity and Imagination," which was developed by Nextbook and the American Library Association (ALA) to explore Jewish literature and culture through scholar-led discussions of contemporary and classic books on a common theme. The Langston Hughes Memorial Library is one of over 150 libraries nationwide receiving grants to host a series in this program. Local support for the series is provided by the Oxford Public Library, the Avon-Grove Public Library, and the Chester County Office of the Jewish Federation of Greater Philadelphia.

The first program will explore *Lost in Translation* by Eva Hoffman and will be held on Sunday, September 17, 2006 at 3 PM. For details or to register, please contact Special Collections Librarian Susan Pevar (phone: 610-932-8300, ext. 3266 or email spevar@lincoln.edu).

Additional books will be discussed one Sunday afternoon per month at the library, skipping December. Dr. Emilie Passow, Associate Professor, Dept. of English and Philosophy, Drexel University, Philadelphia, PA, will lead a discussion of the book at each session. Dr. Passow's background in teaching and lecturing on Jewish literature and Jewish studies is extensive, and she has led discussions on these same books previously at the Delaware County Library System.

The complete schedule follows:
Sunday, September 17, 2006 (3 PM): *Lost in Translation* by Eva

Hoffman
Sunday, October 22, 2006 (3 PM): *Mr. Sammler's Planet* by Saul Bellow
Sunday, November 19, 2006 (3 PM): *Out of Egypt* by André Aciman
Sunday, January 21, 2007 (3 PM): *The Centaur in the Garden* by Moacyr Skliar

Sunday, February 25, 2007 (3 PM): *Kaaterskill Falls* by Allegra Goodman
For more information, please visit our website at <http://www.lincoln.edu/library/index.html>.

Longwood Gardens Presents the Sounds of Summer. As part of its Centennial Celebration, Longwood Gardens in Kennett Square, PA presents a summer series of evening concerts. On Tuesday, August 8th, The Cottars will perform Celtic music. On Friday, August 11th, David Davis and the Warrior River Boys present traditional bluegrass. Broadway music will be performed by The Kennett Symphony of Chester County on Saturday, August 12th. All performances begin at 7:30 p.m. For further information, visit www.longwoodgardens.org or call 610-388-1000.

Keep Cool and Safe this summer. With Delaware in the midst of a heat wave, the American Red Cross offers the following advice on staying safe:

Dress for the heat. Wear lightweight, light-colored clothing. Light colors will reflect away some of the sun's energy. It is also a good idea to wear hats or to use an umbrella.

Drink water. Carry water or juice with you and drink continuously even if you do not feel thirsty. Avoid alcohol and caffeine, which dehydrate the body. Avoid using salt tablets unless directed to do so by a physician.

Eat small meals and eat more often. Avoid high-protein foods, which increase metabolic heat.

Slow down. Avoid strenuous activity. If you must do strenuous activity, do it during the coolest part of the day, which is usually in the morning between 4:00 a.m. and 7:00 a.m.

Stay indoors when possible. If air conditioning is not available, stay on the lowest floor out of the sunshine. Remember that electric fans do not cool, they simply circulate the air.

Be a good neighbor. During heat waves, check in on elderly residents in your neighborhood and those who do not have air conditioning.

Learn Red Cross first aid and CPR. While the above tips can help prevent emergencies, it is important to know what to do if a life-threatening situation arises.

For more safety tips, visit www.red-crossdelmarva.org.

Labor Day Weekend Jewish Single's Event- September 1-4 Meet your basherte while swimming, playing golf or tennis, enjoying spa services, practicing

ing yoga, hiking, biking, dancing or more. The Hudson Valley Resort and Spa in upstate New York is a beautiful setting to meet the man or woman of your dreams.

Register Now! Just \$399 (double

room; additl. fee for private room), www.basherte.orginfo@basherte.org. 413/253-5071. All levels of Jewish practice are welcomed.

Supported by a grant from The Harold Grinspoon Foundation

SEASIDE SLATES AUGUST EVENTS

1. On the evening of August 19th from 7:00pm to 10:00pm, the congregation will observe "Havdalah on the Beach" at Cape Henlopen State Park. At the Large Beach Pavillion, we will have two large grills set up for families to grill their dinners. Seaside will provide drinks and desserts. At sunset, we will "cross the dunes to the beach" and have a Havdallah Service. For more information, please call 302-226-8977.

2. On Thursday, August 24th, Seaside will have an Adult Education / Discussion Group night starting at 7:30pm. We are asking everyone to bring something of their "Jewish Memorabilia" for an adult "Show and Tell" program. It might be an object, a picture, a personal memory that has a strong Jewish connection for you and are willing to tell us about it. For more information, please call 302-226-8977.

Party at Temple Beth El

Planning a special celebration? Let Temple Beth El of Newark, DE make your party planning a success. The synagogue will host a Party Fair, Sunday, October 22nd from 9:30 a.m. to 2:00 p.m. Vendors will encompass the broad spectrum of life-cycle celebrations including births and birthdays, bar/bat mitzvahs, sweet 16s, graduations, weddings and anniversaries. Talk with disc jockeys, bands, florists, caterers, representatives of banquet facilities, photographers, videographers and party planners and view gift ideas and invitation styles. Special party planning sessions and demonstrations are scheduled from Noon to 2 p.m. Admission is free. Please call 302-366-8330 for more information.

Harry's Savoy Grill

presents

'A Night at the Races'

Saturday, September 30, 2006

Gates Open - 7:30 p.m.

at the Bernard and Ruth Siegel
Jewish Community Center

A night of heart-pounding action including:

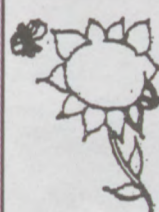
- *open bar and scrumptious food,
- *wagering on 12 thoroughbred races
- *and fabulous prizes!

For information on sponsorship packages and tickets, please contact:

Wendi Weingartner
(302) 478-5660, ext. 203
wendiweingartner@siegeljcc.org



CLASSIFIEDS



JOY Cleaners LTD

We Specialize In : Expert Alteration • Storage
Suedes • Formals • Wedding Gowns

DRAPERIES CLEANED
By New Fold & Pleat Method
- ON PREMISE

FREE PICK-UP AND DELIVERY

656-3537

301 Greenhill Av. WILMINGTON (4th & Greenhill)

To advertise in the Jewish Voice
call Sid, 427-2100, Ext. 24



THE SPEECH CLINIC, INC.
Building Better Communication Skills

SPEECH-LANGUAGE THERAPY

The Speech Clinic, Inc. is now in its 20th year of serving the community. Services are provided to children and adults; after school and evening hours are offered for your convenience.

During the present school year, we will again be sending therapists right to participating private schools.

5147 West Woodmill Dr., Suite 21
Wilmington, DE 19808 • (302) 999-0702



An Exotic Evening of Traditional Moroccan Cuisine & Entertainment

Female Belly Dancers

Every Friday, Saturday,
and Sunday Night

Male Belly Dancers

1st & 3rd Saturday
of Every Month

**\$30⁰⁰
OFF**

Party of Four or More
with this coupon only



401 DUPONT HIGHWAY
NEW CASTLE
Expires 9/5/06

Not valid with other offers or on holidays

7-Course Nightly Dinners & Vegetarian Dinners
Reservations Suggested • Banquet Room
Open Daily 5:30 PM - 11:30 PM

4010 DuPont Highway • New Castle • 652-5344

www.thecasablancarestaurant.com



Visit in Newark
Ali Baba
175 East Main St.
Newark, DE
(302) 738-1111

featuring
ISRAELI and MIDDLE EASTERN FOOD
at ALI BABA in Newark, DE



Located in the Nemours Building
11th & Tatnall Streets
Wilmington, DE 19801

AUGUST SCHEDULE

Admission: \$7 Adults; \$5 Seniors & Students

All shows before 6 PM are \$5

For Advance tickets call, 302-571-4699

or visit www.theatren.org

FRIDAY		SATURDAY		SUNDAY	
4	2:00 only	5	2:00 only	6	
	CAVITE (Not Rated)				
11	8:00* only	12	5:00, 8:00*	13	(Not Rated)
18	2:00 only	19	2:00 only	20	
	LA MOUSTACHE (Not Rated)				
25	8:00 only	26	5:00, 8:00	27	(Rated PG)
25	2:00 only	26	2:00 only	27	
	WHO KILLED THE ELECTRIC CAR?				
25	8:00 only	26	5:00, 8:00	27	(Not Rated)
25	2:00 only	26	2:00 only	27	
	FAVELA RISING (Not Rated)				
25	8:00 only	26	5:00, 8:00	27	(Not Rated)
25	2:00 only	26	2:00 only	27	
	THE MOTEL (Not Rated)				
25	8:00 only	26	5:00, 8:00	27	(Not Rated)
25	2:00 only	26	2:00 only	27	
	THE BRIDESMAID (Not Rated)				

*Join us for a film discussion immediately following the the show

WILMINGTON'S ONLY INDEPENDENT FILM CINEMA

Volunteers Needed!

Theatre N at Nemours has expanded their showtime schedule. The theatre is run with a volunteer staff, and with an increased number of shows, we need more volunteers!

Volunteer duties include:

- Selling tickets
- Validating parking tickets for patrons
- Selling concessions and making popcorn
- Collecting tickets at the door of the theatre

All volunteers get to watch the films for free when they work, and are entitled to a free drink and free popcorn or candy.

Showtimes starting are:

Fridays: 2 PM & 8 PM

Saturdays: 2 PM, 5 PM & 8 PM

Sundays: 2 PM & 5 PM

Volunteers need to be at the theatre an hour and a half before the scheduled showtime in order to set up the "box office" and concession stand. The box office opens one hour before showtime.

If you are interested in volunteering, please contact Bev Zimmermann at 302-576-2137 or by email at theatren@ci.wilmington.de.us. You may also sign up on our website at www.theatren.org click on the "Contact Us" page and fill in your contact information.

Thanks for your interest and we'll see you at the movies!

NEW THIS YEAR

AN ECLECTIC ARRAY OF
REGIONAL MUSICIANS

NEWARK

FILM AND MUSIC

FESTIVAL

SEPT 7-10 2006

BRINGING
MOVIES THAT MATTER BACK TO THE
BIG SCREEN
AT THE NEWARK CINEMA CENTER 3

NEW THIS YEAR
WORLD PREMIERE FILMS
INTRODUCED BY THE ACTUAL
FILMMAKERS

WWW.NEWARKFILM.COM BARRY SCHLECKER, EXECUTIVE DIRECTOR 302.690.5555 OR NFF@NETWORK5555.COM