

*****AUTO*****DIGIT 19801
JEWISH HISTORICAL SOCIETY DE
505 N MARKET ST
WILMINGTON DE 19801-3004

Vol. 45, No. 14 23 Iyar 5764 May 14, 2004 16 Pages
PUBLISHED BY THE JEWISH FEDERATION OF DELAWARE, 100 WEST 10TH ST., SUITE 301, WILMINGTON, DE 19801-1628
WWW.SHALOMDELAWARE.ORG

DELAWARE JEWS TO CELEBRATE ISRAEL'S 56TH BIRTHDAY



Join in the fun of Yom Ha'atzmaut on Wednesday, May 19th

Celebrate Israel's 56th birthday on Wednesday, May 19, 2004 from 5:45 pm-9:00 pm at the Jewish Community Center in Wilmington (101 Garden of Eden Road). Israeli vendors will have wonderful craft and



gift items for sale. Enjoy Israeli Dancing with Don Schillinger, performances by community folk dance troupes Harokdim & Akids, an update on the matsav from Vice Consul Yoel Mester and activities for children and teens—all free of charge! Come hungry and enjoy an authentic Israeli buffet dinner for just \$7 for Adults and \$5 for children under the age of 12.

This event is co-sponsored by the Jewish



Federation of Delaware and the Jewish Community Center in Wilmington. Additional program supporters are Albert Einstein Academy, Adas Kodesch Shel Emeth Congregation, Chabad-Lubavitch of Delaware, Congregation Beth Emeth, Congregation Beth Shalom, Gratz Hebrew High School, Hadassah, Halina Wind Preston Holocaust Education Committee, Hillel at the University of Delaware, Jewish

Family Service of Delaware, Milton & Hattie Kutz Home, Newark JCC, NCJW, Temple Beth El and Women's American ORT Brandywine Chapter.

Show your support for the people of Israel by turning out in record numbers for this fun-filled community event.

For additional information, please call Lauren Schultz at 302-427-2100, ext. 10 or Ivy Harlev at 302-478-5660.

WAS BERG TARGETED AS A JEW?

By Joe Berkofsky, JTA

The world may never know for sure if Nicholas Berg's religion played a role in his grisly execution at the hand of terrorists in Iraq.

But many, including his family, are speculating that it was a factor in the terrorists' decision to kill the American Jewish civilian who had gone to the war-torn country in search of business.

A video that surfaced on the Internet on Tuesday showed the decapitation by masked Iraqis of Berg, 26, of West Chester, Pa.

The scene echoed the 2002 murder in Pakistan of Wall Street Journal reporter Daniel Pearl, who was forced to admit his Jewishness on tape just before his captors cut off his head.

The killing raises questions about whether a Jewish person — civilian or military — is in any graver danger than anyone else in such a volatile region.

Shoshana Bryen, director of special projects for the Washington-based Jewish Institute

for National Security Affairs, said it makes sense that Jews would be targeted in Iraq.

"There are people in these countries who are looking to kill people who are members of certain groups," Bryen said. "The two at the top of the list are Americans and Jews."

Though Berg's religion wasn't mentioned on the video, posted on a Web site linked to Al-Qaida, Berg cites his family members, similar to the way Pearl did.

Berg is seen saying, "My name is Nick Berg, my father's name is Michael, my mother's name is Susan . . . I have a brother and sister, David and Sarah."

His father, Michael, inundated by reporters Tuesday as his family was still grieving, said his son's religion may have made him a target.

"There's a better chance than not that they knew he was Jewish," his father was quoted saying. "If there was any doubt that they were going to kill him, that probably clinched it, I'm guessing."

Joseph Kashnow, an Army

Cavalry scout from Baltimore who has returned from Baghdad, felt strains of anti-Semitism before coming home after a severe injury.

Kashnow, an Orthodox Jew who wore a kippah but usually hid it under his helmet, said that while most of the time his religion wasn't an issue, he did encounter problems.

As an American Jewish soldier in Baghdad, Kashnow said he learned better than to pursue one particular conversation with a local man.

"He said, 'Saddam wasn't so bad, at least he wasn't Jewish,'" recalled Kashnow, 25. "Not a person I wanted to continue having a chat with."

"It's certainly possible there are people in Iraq 'who would feel it was a 'two-mints-in-one' to get an American and a Jew," Kashnow told JTA.

But not everyone agrees.

Rabbi Mitchell Ackerson, an Orthodox rabbi and senior Jewish chaplain for Operation Iraqi Freedom, just returned to his

native Maryland from Iraq after nearly one year there. Despite the killing of a Jewish civilian, he said he believed American soldiers remained the prime target for Iraqi insurgents.

While in Iraq, Ackerson never told Jewish soldiers to hide their identities, but neither did he counsel them to "flaunt" their Judaism.

"I'm not sure what happened with Berg, but my gut inclination is he was not killed because he was Jewish. Instead, it was, 'We captured an American, we're going to prove we're the tough guys and we're going to kill him.'"

Ackerson said that if Berg's murder was religiously motivated, his captors or the Al-Qaeda-linked group that claimed responsibility "would've highlighted it," just as they did with Pearl.

Kashnow's right leg was nearly blown off by a homemade land mine last September. He has spent months undergoing operations and therapy — yet he says he's as sure as ever that the war is just.

He says Berg's murder should



Nicholas Berg

only deepen American and Jewish faith in the war on terrorism. "Berg was fighting to rebuild the country and make it safe for freedom. It's still a tragedy," he said.

Kashnow is not alone.

"Should people think twice or should we continue this?" said Judy Ledger, whose son and daughter — and their spouses — all served with the U.S. military in Iraq. "You do have to realize there's a danger, but the danger is no more if you're in the military than if there is a hate crime" in the United States.

But Ledger told JTA in an earlier interview that as a mother, her children's Jewishness always was in the back of her mind.

Continued on Page 13

INSIDE THE VOICE

Coming Events15
Editorial.....3
Federation Focus4

Graduations & Confirmations10
Israel Focus12
Local News.....6

Matter of Opinion.....13
Milestones14

LEVY, SCHWARTZ & ASSOCIATES



Judy Levy

Eileen Schwartz



Rachel Levy Abrams

Philip Epstein

FEATURED LISTINGS



1 Warwick Court, Stonewold

\$750,000

First Floor Master Bedroom Hamilton Model in popular Stonewold. Only 3 years young. Large Guest Room, 3 floor elevator, Open Kitchen w/Keeping Room. Beautiful Moldings & Wainscoting. Built in pool & professionally landscaped lot.



1022 Weldin Circle, Weldin Woods

\$750,000

This spacious 5 Bedroom, 3.2 Bath home sits on over a half acre lot in North Wilmington. Features include 3 car garage, brand new Georgia Granite Kitchen, 1st floor study & private rear lot.



**LEVY, SCHWARTZ
& ASSOCIATES**

The Team for All Seasons in Delaware Real Estate

Please Phone: (302) 426-6111

Email: homes@levyschwartz.com

Web: www.levyschwartz.com



Prudential

Fox & Roach REALTORS®

Powder Mill Square

3838 Kennett Pike

Greenville, DE 19807

(302) 571-8855

K

THE KUTZ HOME

Delaware's Jewish nursing facility
dedicated to caring for our elders with the
reverence they deserve.

- Medicare and Medicaid certified
- 24-hour skilled nursing care
- Rehabilitation services
- On-site beauty parlor
- Kosher meals and snacks
- Sabbath and holiday services
- Activities programs

**To the Confirmands:
Our Best Wishes
for a Successful Future**

From the
Residents, Staff and Board Members

**For more information about the Kutz Home,
please call Sally Goodman at (302) 764-7000.**

The Milton & Hattie Kutz Home, Inc.
704 River Road • Wilmington, DE 19809
www.kutzhom.org



TIRE & AUTO REPAIR CENTER

All Cars & Trucks - No Appointment Necessary
Competitive Pricing

- Major Brand Tires
- Balancing & Rotation
- Lube, Oil & Filter
- Wheel Alignment
- Wiper Blade Replacement
- Struts & Shock Absorbers
- Minor Mechanical Repair
- Scheduled Maintenance
- Tune Ups
- A/C System Check
- Cooling System Flush
- Belts & Hoses
- Batteries
- Brake Repair

OPEN 6 DAYS
A WEEK

Manager: Mike Dillon

Hours:

Mon. - Fri. 7am - 7pm

Saturday 8am - 4pm

Located @ Bayshore Ford
4003 N. DuPont Hwy. (RT. 13)
New Castle, De 19720
(Follow The Signs To The New DMV)

(302)651 - 9828

(800)241 - 6644

**WHEN YOU NEED A MATTRESS.
HOME BUDGET MATTRESS
CENTER IS YOUR BEST CHOICE.**



ORDER BY PHONE & GET
IMMEDIATE DELIVERY
888-762-0670
800-220-1200

30 Years Of
Being The Best
In Delaware.



- KIRKWOOD HWY.~302-999-9968
- NORTH WILMINGTON~302-479-0449
- NEW CASTLE~302-324-1212
- TRI-STATE MALL~302-792-0108
- PEOPLES PLAZA~302-836-4146

5/04

EDITORIAL

G-d is Crying

"... If someone kills another person—unless it is in retaliation for someone else or for causing corruption in the earth—it is as if he had murdered all mankind. And if anyone gives life to another person, it is as if he had given life to all mankind...."

It is very appropriate to begin an editorial on a Shavuot theme with a quote from the Torah. It is a time when Jews are commanded to renew their covenant with G-d by studying the contents of these five books of Moses—the very essence of our Jewish faith. Quotes like the one above demonstrate the reverence that we are expected to show for the lives of our fellow human beings.

In these deeply disturbing times, it is comforting to have a moral compass to guide us. However, the sentiments expressed in the sagacious words that begin this editorial are directed towards Mecca rather than Jerusalem. It is a direct quotation from the Qur'an, 5:32—an admonition that Islam, like Judaism, condemns all forms of terrorist attacks.

It is an affront against both of our peoples that terrorists have perverted holy texts to justify the slaughter of innocents. An al-Qaeda-linked website posted chilling video footage of Nicholas Berg, a West Chester,

Pennsylvania man being beheaded by his five masked captors. This Jewish civilian, in Iraq on a humanitarian quest to help rebuild the nation's infrastructure, was reportedly taken hostage in an alleged attempt at revenge for the abuse of prisoners held by Coalition forces in the Abu Ghraib prison. As they hoisted Berg's head in the eye of the video cameras these cowardly assassins chanted "Allahu Akbar"—G-d is great.

It is inconceivable that the creator of all humanity would bless senseless slaughter in his name or confer martyrdom upon the Palestinian militants who savagely killed six Israeli soldiers in the Gaza Strip last Tuesday. The G-d of Ibrahim and Isaac would cry at such incidents of barbaric blasphemy.

As I write this, I too am crying.

Lynn B. Edelman

Shabbat Shalom,
Lynn B. Edelman
Editor

*Editor's Note: Qur'an quotes and reflections for this editorial were taken from an intriguing website, <http://www.islamdenounceterrorism.com>

The JEWISH VOICE

Published semimonthly, and monthly in July and August, by the Jewish Federation of Delaware.

Lynn B. Edelman, **Editor**

Paula Shulak, **Cultural Arts Critic**

Joel Glazier, **Community Reporter**

Sid Stein, **Advertising Manager**

Samuel H. Asher, **Publisher's Representative**

Frances Klein, **Editorial Committee Chair**

Editorial Committee:

Mark Delmerico, Marion Hamermesh, Doug Hershman, Connie Kreshtool, Beth Moskow-Schnoll,

Business Committee:

Michael Schwartz, **Chair**; Frances Klein, Jeremy Sitzer

Editorial opinions expressed in this newspaper are those of the newspaper and not those of any individual or other organization. Signed editorials and letters do not represent the view of the newspaper, but rather express the view of the writer. No material will be accepted by The Jewish Voice which is considered against the best interests of the Jewish community. The Jewish Voice does not guarantee the kashruth or the observance of Jewish law of any of its advertisers. Printed material and video tapes sold by our advertisers have not been reviewed by the Jewish Voice, nor are they endorsed in any way by The Jewish Voice.

Member of the American Jewish Press Association and Jewish Telegraphic Agency.
©2004 The Jewish Voice Printed by Dover Post Company

Periodicals postage paid for The Jewish Voice (USPS-704160) at Wilmington, Delaware.
Subscription price: \$18.00. Mailed to subscribers and contributors to the Jewish Federation of Delaware. POSTMASTER: Send address changes to The Jewish Voice, 100 W. 10th St., Wilmington, DE 19801. (302) 427-2100. The FAX number of The Jewish Voice is (302) 427-2438. E-Mail: lynn.edelman@shalomdel.org



LETTER TO THE EDITOR

Haircut helps kids with cancer

Dear Everyone,

My name is Marna Lew and I am an American currently working as the Northern Fieldworker for UJS, the Union of Jewish Students of the United Kingdom and Ireland.

This past Wednesday, (May 12), I had my hair cut and donated 10 inches (25 cm) to the Hair to Wig Program. My hair will be used to make a wig for an Israeli child who is suffering from cancer and who has lost his/her hair.

I am asking each person who reads this story to donate 10p per inch of hair. The money will go to two organizations that help children and young people with cancer. One organization is based in the United Kingdom and one in Israel.

They are:

Chai Cancer Center (London) supports members of the British Jewish community who suffer from cancer, and their families. www.chaicancercare.org

Zichron Menachem (Jerusalem,

Israel) was founded in 1990, and provides care to Israeli children with cancer and their families. It is named after a boy called Menachem Ehrental who died of cancer at the age of 14. (My hair will most likely go to a child receiving care at Zichron Menachem). www.zichronmenachem.org

With your help, my goal is to raise at least £500 for these two organizations. (£250 per organization)

All monetary donations can be sent to Marna Lew at the Hillel House in Leeds.

A big thank you to the Hair Cuttery on Boar Lane in Leeds who cut my hair free of charge.

This project is in memory of my friend Christina Hasel who died unexpectedly this past week in Newark, Delaware, USA at the age of 22.

For more information or to make a donation, please email me at northernjujs@yahoo.com or call me on 07976 751 413.

Sincerely,
MARNA R. LEW

The President, Officers & Board of Directors cordially invite you to attend the

Jewish Federation of Delaware's

69th Annual Meeting

including the presentation of

The Irving S. Shaprio

Community Builder Award

and

The Jewish Federation of Delaware

Volunteer of the Year Award

With our Special Guest

Jonathan Loftus

Thursday, June 17, 2003

7:00 P.M.

At the Wilmington JCC

A dessert reception will follow, all dietary laws will be observed
There will be no solicitation at this event

For more information, please contact Lauren Schultz at

302-427-2100 ext. 10 or

log on to www.shalomdelaware.org

The Jewish Federation of Delaware welcomes those who would like to connect with the Jewish Community and encourages the participation of interfaith families, couples and significant others in all of its activities.

THURSDAY NOON DEADLINE

for all articles, advertisements and news for The Jewish Voice

ISSUE	FOCUS	DEADLINE
MAY 28	HOME	MAY 20
IMPROVEMENTS		

All submissions in person for The Jewish Voice due at JFD offices or mail: The Jewish Voice, 100 W. 10th St., Suite 301, Wilmington, DE 19801-1628
e-mail: lynn.edelman@shalomdel.org

SHABBAT Candle Lighting

MAY 21ST - 7:58 PM

MAY 28TH - 8:03 PM

JUNE 4TH - 8:08 PM

FEDERATION FOCUS

Change is good



Samuel H. Asher
Executive Vice President

Anyone who knows me knows that I am always looking for ways to be innovative. I don't stand in one place for too long. By the same token, the JFD is moving forward on many fronts.

Spring in Delaware is a time of change. The warmer weather makes us feel so alive!

The weather energizes us and spurs us forward. The greening of the lawns, the vibrant colors of the flowers and the additional sunlight inspires us to shake off our winter doldrums and accomplish great things.

This spring is made all the more promising by the success of two consecutive Federation Annual Campaigns. Last year's campaign raised \$1,760,000, more than any other campaign in the history of JFD. The 2004 campaign is expected to break the \$1.8M barrier.

Excitement is also blooming at the Garden of Eden Campus. The transformations made by the Community Capital Campaign and our Building Committee are truly inspiring. The new Early Childhood Education, Health and Fitness wing and Jewish Family Service building are emerging from the ground like spring flowers. This new construction renews our collective hopes for the future of our Federation agencies.

So, that's the good news. At the same time, spring also means the Federation's annual allocations process. For, what would fundraising be were it not for the fund dis-

tribution process. We have an excellent committee of community volunteers who review the funding requests from our beneficiary agencies and organizations. They do a marvelous job of ensuring the accountability of the entire fund distribution process.

The JCC is working overtime to maintain their programs and membership base despite the extensive renovation. In addition they are hiring a new Facility Manager to maintain the newly expanded campus and thus preserve the capital campaign's legacy to future generations of Delawareans. The JCC is also creating new programs and services to coincide with the new building's opening, targeting unmet needs for seniors, intermarried families and in Judaic education.

The Jewish Agency is attempting to meet the needs of 13 million Jews worldwide in a climate of rising anti-Semitism and attacks on Israel. The needs of individuals who have made aliyah are particularly acute due to unemployment and a reduction in Israel government subsidies. Youth aliyah programs offer emergency assistance and scholarships. Unemployed families need

job training, language acquisition and day care. Aliyah both rescues people from hostile situations and helps strengthen Israel by increasing its human capital and consumer demand.

And I could go on with more needs identified in the allocations process.

Our community already has many of the essential ingredients for future growth and development. We have visionary leadership at our agencies—the front line of our service delivery system. We have responsible agencies to deliver effective programs and services. We have a communal vision and leadership able to distribute funds to emerging priorities while addressing the efficacy of funding existing services.

So what more do we need? We need more people involved in raising money, more donors, and more high-level campaign contributions. If you have not yet made your gift to the 2004 annual campaign, please do so now so we can include your pledge in this allocations cycle. We need you.

With your help we can keep moving forward

Proposed HB to shift primary away from Shabbat

On Thursday May 6, Rep. Robert J. Valihura Jr., (R-Laurel Ridge), introduced House Bill 400, a compromise measure aimed at changing Delaware's general primary from Saturday to Tuesday.

The bill has won the support of the Minner administration and Sen. Patricia Blevins, (D-Elsmere). Blevins' support is important because she heads the Senate Committee charged with reviewing election laws. Rep. Valihura and Sen. Blevins are principal sponsors and there are 18 co-sponsors — 12 Republicans and two Democrats in the House (including the Speaker), plus three Republicans and three Democrats in the Senate. Hopefully this broad sponsorship will

facilitate the passage of the bill.

Saturday primary voting was chosen in the 1970s because people pressing for reform of the candidate selection system thought more people would vote on Saturdays. Until the mid-1970s, major party candidates were picked at party nominating conventions, and primaries were held only if there was a split vote. Turnout for the Saturday primaries has always been poor.

The Jewish community has been unhappy with this arrangement because of the conflict with Shabbat. Moreover, the last primary in 2002 fell on Rosh Hashanah.

For 2004, the bill would result in polling hours being extended from 8 p.m. to 9 p.m.

as an interim accommodation to allow the Sabbath-observant to vote after sunset.

Starting in 2006, the primary would move to the second Tuesday in September. Also, election officials would be given the authority to close a particular school or government office building used as a polling place, if arrangements for use of the building as a polling place couldn't be worked out otherwise. While it is unlikely that this provision will need to be enforced, it will be helpful in encouraging schools to cooperate with election officials in providing facilities for voting.

Similar legislation introduced last year foundered over the issue of whether all schools should be required to be closed for

the primary. Jewish Federation of Delaware and its JCRC committee have been working with a lobbyist since last fall to craft the compromise language and build support for the introduction and, hopefully, eventual passage of the bill this session.

As we go to press, House hearings on the bill were scheduled for Wednesday May 12, and a potential vote in the House could come as early as Thursday. Watch the daily media for the results of that voting.

If you would like to receive talking points to use when calling your representative in support of this bill, please contact Jack Zigon, Director JCRC and Planning at 302-427-2100 X30 or jack.zigon@shalomdel.org.

JFD's new charitable gift annuity program



Jennifer Young
Endowment and Women's
Philanthropy Director, JFD

The Jewish Fund for the Future/Jewish Federation of Delaware is partnering with United Jewish Communities to offer Charitable Gift Annuities. A Charitable Gift Annuity is an agreement between the donor and the Jewish Fund for the Future, the endowment fund of the Jewish Federation of Delaware, whereby, in exchange for a gift of cash, stock, mutual fund shares, or other assets, the endowment fund

promises to pay you, or a beneficiary you choose, a fixed income for life. The assets that remain after the income beneficiary dies may be used to establish a fund in your name that will be established with the Jewish Fund for the Future.

The Charitable Gift Annuity yields are hard to beat. Money invested in taxable money market accounts of CDs will yield 5% or less. With an annuity the amount you receive is fixed and will not change regardless of current investment or market conditions. For example, a 75-year-old donor would receive 7.1%. Donors can act now to receive the charitable deduction this year.

Charitable Gift Annuities offer many benefits to the donor:

- The annuities can be established with a minimum gift of \$10,000.

- Upon setting up your annuity, you may be able to claim a current charitable income tax deduction.

- A portion of each income payment to you is tax-free.

- Income payments are based upon the recipient's age at the time of the first payment—the older the recipient, the higher the payment.

- A Deferred Gift Annuity can be an excellent supplement to retirement planning and is not subject to qualified plan regulations.

- Charitable Gift Annuities provide you

peace of mind in that you will be receiving a fixed payment for the rest of your life.

If you would like more information, please contact Jennifer Young, Endowment Director, at 302-427-2100 x 19. The Jewish Fund for the Future can assist you with all of your planned

giving needs: Philanthropic Fund/Donor Advised Fund, Named Endowment Fund, Charitable Remainder Trust, Charitable Gift Annuity, Charitable Bequest, Perpetual Annual Campaign Endowment (PACE), Lion of Judah Endowment (LOJE).



Lion of Judah donors enjoyed the Chai Event at Winterthur on April 24; pictured 1 to 17, back row: Ruth Ann Ger, Andrea Levine, Caryl Marcus Stape, Wendy Berger, Michelle Simon, Toni Young, Barbara Schoenberg, Leslie Newman; front row: Suzanne Grant, Ethel Parsons, Michele Asher, Arlene Simon, Iris Tocker, and Yetta Chalken.

**Ginger Weiss**

1302 W. 9th Street
Wilmington, DE 19806
Telephone
658-9444



You give me your financial goals. I'll give you powerful tools to achieve them.

Looking for a representative who offers her clients financial solutions? Then look to me for:

- Life insurance • Estate Planning • Financial Products
- Retirement Planning • Disability Income

I know planning is essential and that many people fail to plan. I specialize in helping people create, conserve, and distribute assets. To learn more, call me today.

Ginger Weiss is a Registered Representative of New England Securities Corp., and Branch Address. New England Financial is the service mark for New England Life Insurance Co., Boston MA and related companies. Securities products offered through New England Securities Corp., Boston MA 21001-5205, Exp 11/9/2004



Brandywine Urology Consultants, PA

*Andrew J. Glick, M.D. Bruce N. Benge, M.D. Michael R. Lobis, M.D.
David J. Cozzolino, M.D. Steven A. Terranova, M.D.*

Male Infertility
Erectile Dysfunction
Vasectomy and Reversals
Incontinence

Kidney Stone Disease
Lithotripsy
Prostate & Bladder Cancer
Brachytherapy

Through our efforts, we hope to improve the health of our patients, educate and guide them and help improve the quality of their lives. We welcome new patients and accept most major medical insurance.

Two offices conveniently located:

**1801 Rockland Road,
Suite 300, Wilmington**
(between 202 and DE 141)

**2600 Summit Bridge Road,
Glasgow Medical Center, Suite 222,
Newark** (between US 40 & DE 896)

Please Call 302-652-8990 to schedule an appointment, Fax 302-652-8646
Visit us at www.urologychannel.com/brandywine or www.MDhub.com



Choose the mortgage payment that fits you best.

Ask about the Pick-a-Payment Loan from R.H. Cooper LTD

Enjoy the freedom to choose the initial amount of your monthly mortgage payment.

With R.H. Cooper's Pick-a-Payment Loan,

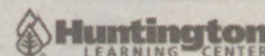


you have the financial flexibility to select a low payment and increase your monthly cash flow. Use the extra cash to pay off high-interest credit card debt, make home improvements, or invest for your retirement. *It's your money; it's your choice.*

To find out more, call Ross Cooper today at
(302) 494-6768

R.H. Cooper, Ltd.

A fully licensed Delaware and Pennsylvania mortgage broker.



Boost Your SAT Scores By As Much AS 200 Points! *

We have Been Helping Students Improve Their SAT
Scores Since 1977!

- Better schools, Scholarships and jobs
- Individualized program to meet your needs
- Results vary based on amount of work and commitment by the individual

**Call Today and Schedule
An SAT Diagnostic Exam
Receive \$50 Off**

Springfield Square Shopping Center, South
(610) 690-4411

Tally Ho Shopping Center
(302) 478-4242

Independently owned and operated

INSIDE DELAWARE

Brown vs. Board of Education case remembered in DE

By Joel Glazier

A recent daylong symposium at the University of Delaware celebrated the landmark Supreme Court Decision of May 17, 1954, *Brown vs. Board of Education*. That unanimous decision by the US Supreme Court outlawed separate but equal public schools that had been legally segregated based on race. Columbia Law School Professor Jack Greenberg in his keynote address praised Delaware's role in the case and in the history of desegregation. Greenberg has argued 40 cases before the U.S. Supreme Court including being part of the original legal team in the 5 cases collectively known as *Brown vs. Board of Education*.

Delaware's Chancery Court was the first in the nation to do the unthinkable, Greenberg related, as he recalled the 1952 decision in favor of the plaintiffs that ordered black students be admitted to the University of Delaware. Greenberg argued the case with Delaware's first black attorney, Louis Redding, Jr., with whom he developed a working relationship in the following years, especially in cases developed by the NAACP Legal Defense Fund. Redding could only find one place that would rent him office space in Delaware in the 1950's. That office was in John Kane's North American Building, located on N. King Street. "Redding always

yearned to be a NYC lawyer and he dressed the part and enjoyed the company of the so called big city lawyers," Greenberg said.

Besides John Kane, Greenberg openly praised another member of Wilmington's Jewish Community by mentioning "Albert Young was a hero who offered to personally walk Black students into Milford High School. I understand that offer may have influenced the outcome of his not being a candidate for US Senate from Delaware." Milford was a scene of violence as 11 black students attempted to attend the previously all white Sussex County school. It was mentioned that after the *Brown* decision, the Attorney General from Georgia contacted all the other states' attorneys general asking to join together to develop ways to circumvent the decision's mandate of integration. Delaware's Attorney General Young replied to that call, saying he would join a movement figuring out ways to implement it.

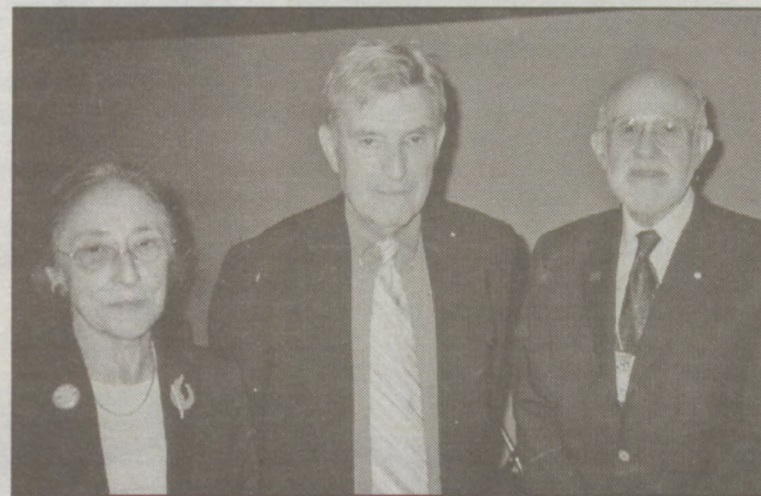
Glass is Half Full

Greenberg has continued to work in areas of human and civil rights in the 50 years since the *Brown* decision. He did legal work in the Soviet Jewry movement when Jewish refuseniks were denied permission to leave the Soviet Union. Currently he is helping Bulgarian and East European schools integrate Roma

(sometimes referred to as Gypsy) students into the state schools, as a condition of the non-discrimination agreements of the European Union. He recently authored, *Crusaders in the Courts*, published by 12 Tables Press.

Recalling the times of a legally segregated 1950's America, the oft-cited tale of Supreme Court Justice Felix Frankfurter was shared. A segregationist Chief Justice of the Court, Fred Vinson, died suddenly of a heart attack in September 1953. Frankfurter told a close friend, Philip Elman, that Vinson's demise represented "the first indication I have ever seen there is a G-d." President Eisenhower appointed Earl Warren as the new Chief Justice and the Warren Court issued its unanimous opinion that overturned the legal separate but equal ruling from 1896.

Greenberg compared the decision to "an ice scraper that broke through a frozen sea" and with current moves that have led to resegregation in certain states, he offered "the glass is half full but fifty years ago it was totally empty." The symposium was one of several around the country commemorating the 50th Anniversary of the *Brown* decision. One of the main organizing partners was the ACLU Foundation of Delaware with member Gilbert Sloan as Symposium Chair.



Sonia Sloan(l) and Gilbert Sloan(r) with attorney Jack Greenberg. Gilbert Sloan chaired a daylong symposium commemorating the *Brown vs. Board of Education* decision. Greenberg praised Delaware's (late) Attorney General H. Albert Young for his role in furthering school integration.

More Local Brown Case Connections

Though the U.S. Supreme Court outlawed segregated public schools, it was in 1978 that 11 area suburban public school districts and the Wilmington Public Schools were ordered to consolidate and reconfigure attendance patterns to insure full racial desegregation. Last week, retired federal judge Murray M. Schwartz, received the Delaware Bar's First State Distinguished Service Award for designing the 1978 desegregation plan for New Castle County schools.

regation plan for New Castle County schools.

Gene Danneman, Chair of the Delaware Humanities Forum reports that on Monday, May 17, a Delaware Humanities Forum funded film will premiere on WHYY-TV, Channel 12, called *With All Deliberate Speed*. The film focuses on the strategies used by the NAACP to end desegregation. Jack Greenberg along with some current teachers from Brandywine High School appear in the hour-long film.

Kutz Home celebrates annual meeting

Spring showers could not deter more than 100 residents, family, friends and staff members of the Milton and Hattie Kutz Home from

celebrating the organization's Annual Meeting on April 25th. It was a time to pay tribute to Outgoing Board President Miriam

Edell and to welcome her successor, Michael Rosen.

Edell thanked Kutz Home Executive Director Karen Friedman for her support during her tenure as president. Jewish Federation of Delaware Executive Vice President Samuel H. Asher congratulated the new slate of officers. In addition to President Rosen, the 2004-2005 Kutz Leadership Team includes Vice Presidents Joel Friedlander, Joseph Nicholson and Norman Pernick; Secretary Laurie Silverstein and Treasurer Robert Jacobs. Newly elected board members include: Robert Cohen, David Driban, David Freshman Arlene Simon and Scott Simon. David Bobman, Ellen

Levin, Nan Lipstein and Bill Wagner were publicly thanked for their commitment to the board as their terms of service ended.

Bernice Edwards, Kutz's Director of Activities, recognized the many men and women who volunteer their time to help the agency and its residents.

Three employees who contributed a combined 73 years of service to Kutz Home were honored upon their retirement. The Nursing Department recognized Idonya Ford and Marcia Brainard. Sheila Mensch was praised for her 15 years of service as Director of Admissions and Public Relations.

Deidre Vecchione, Auxiliary

President, spoke of a successful year of fundraising. Proceeds will be used to purchase a fireplace for the lobby and new china cabinets for the resident's dining room. Through the years, the Auxiliary has purchased artwork to decorate the hallways and equipment for the rehabilitation department.

Eighteen employees were recognized for anniversaries ranging from five to 40 years of service. Each employee was awarded a cash gift made possible by the Auxiliary.

Rabbi Sanford Dresin, spiritual leader of Adas Kodesh Shel Emeth Congregation in Wilmington, gave the D'var Torah. Refreshments were served.



Honored retirees, Idonya Ford, Shella Mensch and Marcia Brainard.



Newly-elected President Michael Rosen with outgoing president Miriam Edell.

Hats off to JFS volunteers

The Jewish Volunteer Network, which coordinates all Jewish Family Service volunteering in the community, paid tribute to the great generosity and dedication of its volunteers at a "Hats Off to JFS Volunteers" luncheon on April 28.

"More than 175 individuals have participated in volunteer activities this year, providing more than 1,200 hours of service. We are so grateful for their time and energy," said Lisa Driban, JVN Volunteer Coordinator. "That is why it is an honor for us show our appreciation at a special luncheon for our volunteers."

According to Driban, more than 450 people have been served by the JVN this year alone.

Services have included preparing meals for a pregnant woman who was at bed rest and unable to cook for her family; grocery shopping for individuals unable to do so on their own; forming a minyan for a grieving family who had no local family; providing dinners to a family whose father was ill and just home from the hospital; serving the poor during the Christmas season.

"Young and old alike have volunteered their time," said Driban. "A Bar Mitzvah boy has dedicated

an hour a week to play chess with an elderly gentleman who is unable to get out of the house."

On April 28, JVN volunteers gathered at Iris Tocker's home to enjoy a luncheon in appreciation of their service. Sophie Longwill donated the food, in addition to preparing the gourmet meal. To reflect the theme of the event, *Hats Off to JFS Volunteers*, the women created decorative paper bag hats.

The Volunteer of the Year Award was presented to Alison Weiss, who has been active in the Jewish Volunteer Network since 200, devoting more than 65 hours

See HATS OFF, page 8

2004 SPRING SUBSCRIPTION DRIVE

Top Ten Reasons To Support The Jewish Voice

10. It is the only local newspaper that carries Jewish-themed crossword puzzles.
9. Where else can you find Drybones editorial cartoons?
8. We give you exclusive access to holiday recipes from the kitchen of Anne Romirowsky, local nutritionist and gourmet chef.
7. We tell you when to light Shabbat candles and offer interpretations of the weekly parsha from Jewish scholars representing various streams of Judaism.
6. Looking for a shul in Sydney or a place to buy prachas in Prague? Our travel correspondents tour the globe through Jewish eyes (and stomachs).
5. "Myths and Facts", a feature by Mitchell Bard, prepares readers to intelligently advocate for Israel.
4. Our Matter of Opinion page is often controversial and always insightful!
3. Jewish Telegraphic Agency stories provide up to the minute coverage of key national and global Jewish news events.
2. Readers learn about the programs and activities offered by Federation's beneficiary agencies-Albert Einstein Academy, Delaware Gratz Hebrew High School, the Jewish Community Center, Jewish Family Service, Hillel at the University of Delaware and the Milton and Hattie Kutz Home-and learn how Federation plans for the future through its Annual Campaign, Capital Campaign and Fund for the Future.
1. It forges an important connection between Jews in Wilmington, Greater Newark, Dover and the Beach communities.

All this plus free announcements of readers' milestone events-births, deaths, engagements, marriages and achievements. 22 times a year depend upon the success of this annual VOLUNTARY SUBSCRIPTION DRIVE to meet ever increasing printing and postage costs. While all gifts are appreciated, we offer special incentives to those readers who can contribute on a Benefactor or Sponsor level:

Benefactors who contribute \$300 or more, can select from two premium thank-you gift packages:

A Weekend for Two at The Breakers Hotel and Suites in Rehoboth Beach - including breakfast each morning plus special discounts at area outlets

OR

A full Day of Relaxation at the fabulous Nicholas Anthony Salon and Day Spa in Kennett Square.
Pamper yourself with a European facial, Swedish massage, manicure, pedicure,
haircut & style, make-up application and lunch.

OR

A \$100 gift certificate to A.R. Morris Jewelers

Sponsors, loyal readers who contribute \$150 or more, may select one of the following premium prizes:

Two Orchestra seats to the Mann Center for the Performing Arts in beautiful Fairmount Park

For the following performances:

JULY 21—An Evening of Lerner and Lowe with famed conductor Marvin Hamlisch

JULY 22—Internationally renowned violinist Itzhak Perlman

AUGUST 9—Neil Sedaka with special guests The Klezmatics

AUGUST 10TH—The Boston Pops Orchestra

OR

A gift certificate for two tickets to any concert produced by the Grand Opera House

On behalf of Jewish Voice Editor, Lynn B. Edelman; Advertising Sales Manager, Sid Stein; Publisher's Representative, Samuel H. Asher and Editorial Committee Chairperson, Frances Klein, we offer our sincere thanks for your continued generosity.

Please take a moment now to return this coupon and show your support!

Here's my tax-deductible contribution to demonstrate my support for The Jewish Voice. If you wish for your name to appear in a list of contributors in a future issue of The Jewish Voice, please print it exactly as you wish for it to appear.

PLEASE MAKE YOUR CHECK PAYABLE TO: The Jewish Voice and mail it to: The Jewish Voice, 100 W. 10th Street, Suite 301, Wilmington, DE 19801-1628.

Name _____

Address _____

Enclosed is my check for:

☐ \$300 ☐ \$150 ☐ \$100 ☐ \$75 ☐ \$50 ☐ \$25 ☐ Other

If you contribute at the Benefactor (\$300 and above) or Sponsor (\$150 or above) levels, please indicate your choice of premium.

The **JEWISH VOICE**

INSIDE DELAWARE

Hats off

Continued from page 6

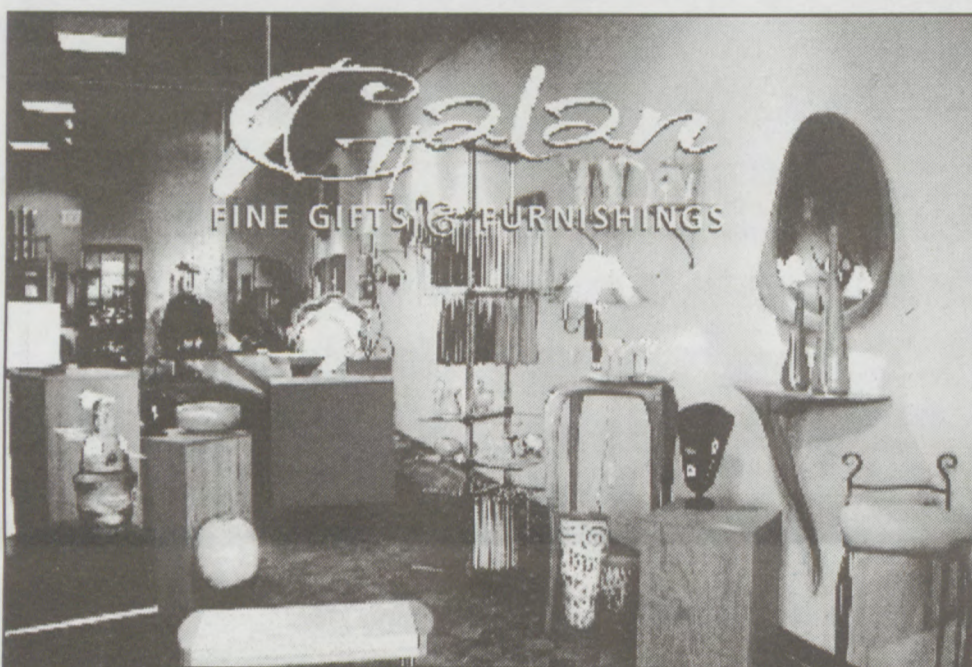
to volunteering in the past year alone. Between making friendly visits and grocery shopping, she has not only enabled a frail elderly couple to remain safely in their own home, but also has become a welcome companion. The recipients of Alison's service describe her as a warm and caring individual, always there when they need her.

Jodi Frank and Marci Aerenson

each received the *Tikkun Olam* Award for their dedication to organizing the Bone Marrow Donor Drive hosted by JFS in January. The drive united 70 volunteers and raised funds needed to test 250 potential bone marrow donors. Judi Feinson, whose sister is a recent bone marrow transplant recipient, presented the award.

For more information about volunteering with the Jewish Volunteer Network, please contact Lisa Driban at (302) 478-9411 extension 21 or ldriban@jfs-delaware.org.

JFS volunteers Marci Aerenson and Jody Frank, holding plaques, received the Tikkun Olam Award for their dedication to organizing the Bone Marrow Donor Drive hosted by JFS.



Beautiful, interesting, unusual products: both GIFTS & DECOR. Galan covers all mediums: Glass, Clay, Wood, Metal, Textiles & Handcrafted Jewelry.

Full scale customer service offering design & consultative services by appointment, special orders, research services, shipping and beautiful signature packaging.

WELCOME TO GALAN

SHOPPES OF BRINTON LAKE 610-358-2429 RIGHT OFF RT 202 AT RTs 1 & 322

Weichert,
Realtors

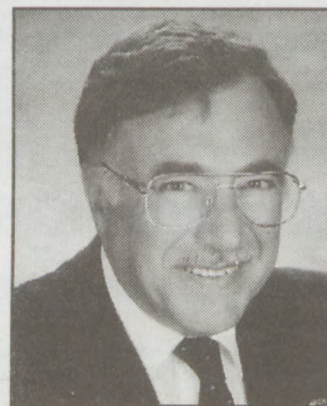


BERNIE FREIMARK
BROKER

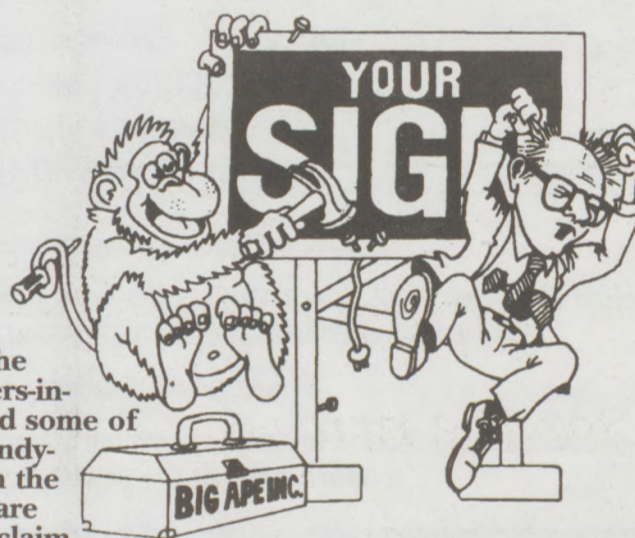
Company Wide Top Listing Awards
President's Club

Office: (302) 478-3800
Ride the wave of rising prices
30 years of selling Real Estate

BRANDYWINE OFFICE
3302 CONCORD PIKE
WILMINGTON, DE 19803



Don't Let Just Anyone
Monkey with Your Sign
**CALL A TUPP
PROFESSIONAL**



Half the brothers-in-law and some of the handy-men in the Delaware valley claim they can fix or maintain your sign. Don't you believe it, Every year for the past 73 years, we've had to fix the handy work of some jack-of-all-trades. It always ends up costing the owner more time and money than if he would have called us first.

Call 322-1600

**TUPP
SIGNS**

457 E. New Churchman's
New Castle, DE 19720

OPEN 24 HOURS **Golden Castle** **FULL BAKERY SHOP**
Diner & Restaurant
2722 Concord Pike Wilmington, DE 19803
• Tel: (302) 478-7701 • Fax: (302) 478-7710

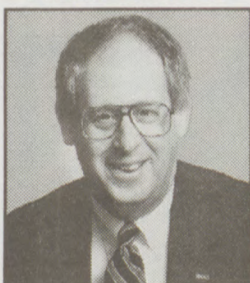
BUY ONE DINNER GET SECOND DINNER OF EQUAL OR LESSER VALUE FREE
Expires 4/16/04

1/2 PRICE LUNCH
Buy One Lunch, Get Second Lunch of Equal or Lesser Value 1/2 Price.
11:00am-3:00pm 7 days one coupon per table.
Not to be combined with any other special offers.
Holidays or special occasions excluded. Eat in only. Expires 6/15/04

Banquet Facilities Available for up to 50 people.
All credit cards accepted
www.GoldenCastle.com

BUSINESSES & PROFESSIONALS

PHILIP BERGER



Expert Service Since 1969

**Weichert,
Realtors**

*"No one Works Harder
to Give You
Great Service"*

3302 Concord Pike, Wilmington, DE 19803
Off: 302-478-3800 Res: 302-427-2251

BOYD'S FLOWERS

*Famous For
Fine Flowers*

421-2900

824 Market St. Mall
2013 Penna. Ave.
www.boydsflowers.com

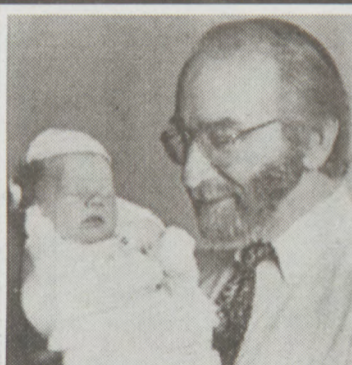


Regina Kovitz
"Your Connection to Kent County"

1054 South Governors Avenue
Dover, DE 19904

Office: 302-678-4308
E-mail: RKovitz@Remax.Net
Fax: 302-678-4305

RE/MAX
Horizons



mohel

מורהל

joel h. shoulson

I just performed
"adam's" bris
I also performed
his father's
my father served his
grandfather and
great grandfather.

let our proven tradition be yours!
1-800-700-JOEL (5635)
print & video information available



Barbara Levy

Certified Residential Specialist
Accredited Buyer Representative
Certified International Property Specialist

Licensed Broker in DE, PA, MD

*"A satisfied client is
my #1 priority"*

Direct Line: (302) 529-2626

Home: (302) 475-6786

blevy@psre.com

http://BarbaraLevy.Realtor.com

**Patterson
Schwartz**

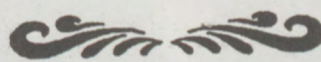
Office: (302) 475-0800

**New
Castle
Farmers
Market**

Come out for a day of family
fun and shopping bargains

**DON'T MISS
DELAWARE'S
BIGGEST & BEST
FARMERS MARKET
& FLEA MARKET**

Voted Best of Delaware
FRI. & SAT. 10 A.M.-10 P.M.
SUNDAY 10 A.M.-6 P.M.
Rt. 13 (across from Wilmington Airport)
New Castle, DE 328-4101



NEXT ISSUE:

**MAY 28
HOME
IMPROVEMENT**

**DEADLINE
MAY 20**



Lynne
Chiehi

Prudential
Gallo, REALTORS
227-6101
www.prudential.com

Cheryl
Fruchtmann

Former Presidents & Founding
Members of
Seaside Jewish Community

*Delaware Natives Opening The
Doors To Your Dreams*



**Prudential
Gallo, REALTORS®**

702 Rehoboth Ave.,
Rehoboth Beach, DE 19971
1-800-321-2268



REPAIRS
ON
PREMISES

CUSTOM
DESIGNS
•
APPRAISALS

House of Watches
and FINE JEWELRY

DIAMONDS ♦ GEMSTONES ♦ JEWELRY ♦ WATCHES
TORCELLATO COLLECTION BY ALISA - 18K AND STERLING
NOMINATION • THE ORIGINAL - 18K AND STAINLESS

Bob & Debbie Berman
302-654-7751
1330 Washington Street
Wilmington, DE 19801

Gil & Mardian Berman
302-478-3098
2505 Concord Pike
Wilmington, DE 19803

BAT MITZVAH DRESSES

Teens N Up

A one stop shop for fashion conscious teens!
Stevenson Village in Baltimore

(410)484-1125
2 min. from 695 off exit 21

Monday to Friday 11 am to 6 pm
Saturday 10 am to 5 pm
Sunday 12 Noon to 4 pm

**Planning is
Everything...**
We stock a full line
of dresses and suits
• Specializing in 7-14
Preteen & Junior Sizes
• Custom Sizing Available
8-12 Week Delivery

**Over 21 Years
Experience**

*Finally,
there is
a solution...*

Pain Relief from
Auto & Work Related Injuries

KELMAN Chiropractic Center

- Same Day Appointments Available
- Participating Provider-Most Insurances
- Family Practice-Medicare
- Day and Evening Hours
- Emergency Appointments



Dr. Michael Kelman

www.kelmanchiropractic.com
PRICES CORNER VICINITY
3722 Old Capitol Trail

998-2060

**The Zutz
Group**

INSURANCE

Since 1940

Personal, Business and Professional Insurance
Life, Health, Disability and Other Benefits Coverages
Specialists in Unusual Risks

300 Delaware Avenue, 16th Floor
Wilmington, Delaware 19801
Voice 302.658-8000 800.441-9385
Fax 302.658-8015 www.zutzgroup.com

"Your Protection is our Profession"

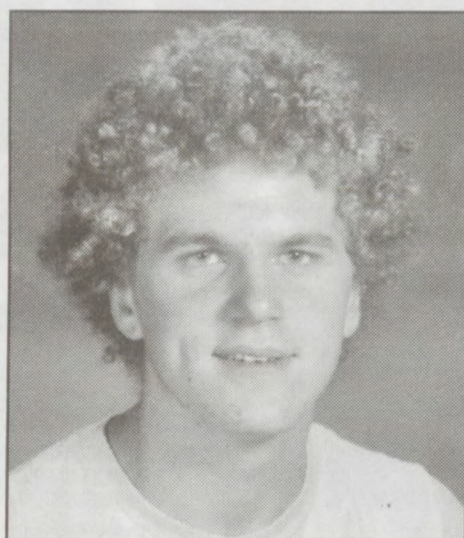
*Call Sid
for the price
of an ad
this size.
427-2100
Ext. 24*

GRADUATIONS AND CONFIRMATIONS

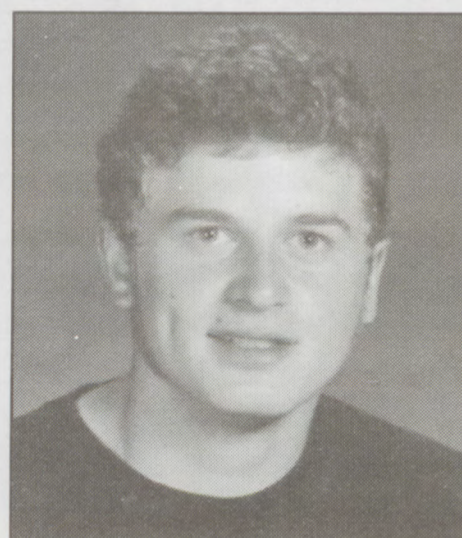
Mazel Tov to Delaware Gratz Grads



MARNI GROSSMAN



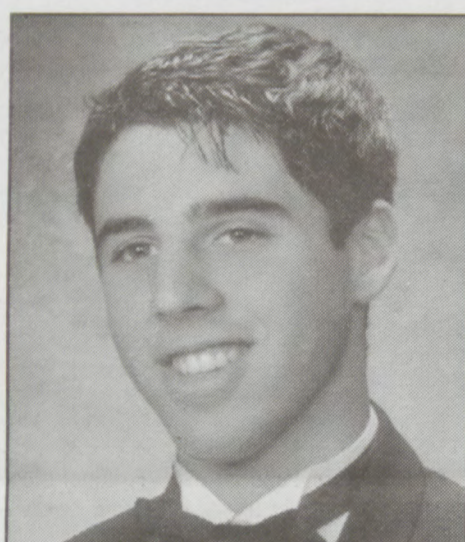
NATHANIEL JAFFE



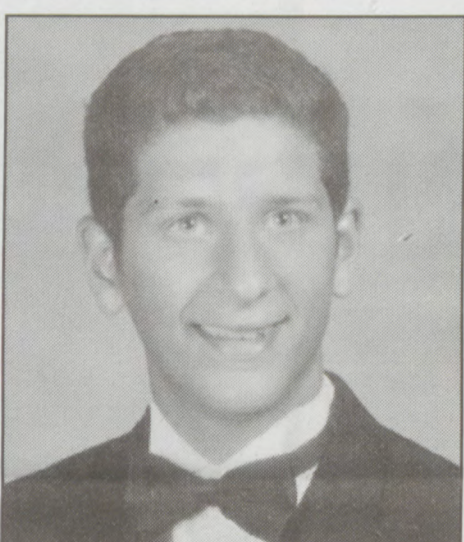
SAUL JAFFE



BRIAN ROSEN



BERYL SCHRAGGER



BEN ZUSSMAN



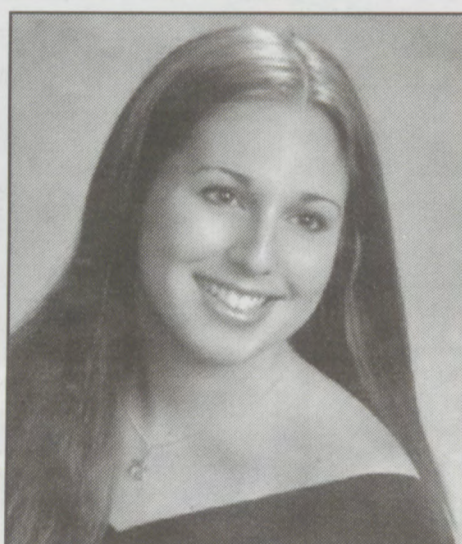
ILENE BLOOM



LARA GOLDSTEIN



STEFANIE GORDON



JENNIFER KAPLAN



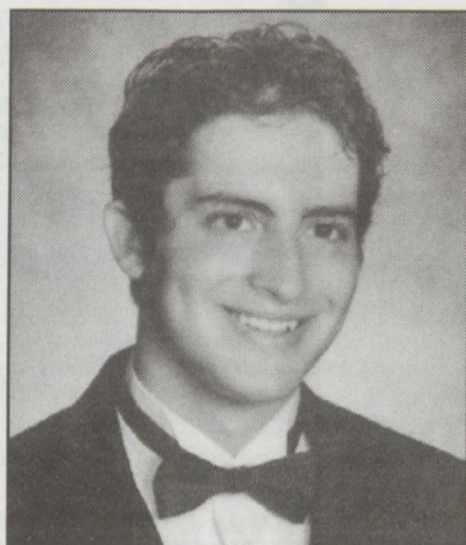
ILANA JAFFEY



ANNA KLEIN



BRIANA ADIE MAMBERG



ALAN PLOTZKER

Commencement ceremonies for Delaware Gratz Hebrew High School will be held at the Jewish Community Center on Thursday, May 20 beginning at 7:30 p.m. The most comprehensive end goal for studies at Delaware Gratz Hebrew High School is the Diploma in Jewish Studies. This year, Diplomas will be awarded to Marni Grossman, Nathaniel Jaffe, Saul Jaffe, Brian Rosen, Beryl Schragger and Benjamin Zussman.

MARNI GROSSMAN, daughter of Debbie and Jerome Grossman, is a senior at Tower Hill School. This year, she has served as the co-editor-in-chief of Tower Hill's literary magazine and newspaper as well as a writer for the "Crossroads" section of the Wilmington News Journal. Additionally, she served as the school's senior ambassador to the Blue-Gold game. Marni, a Studio

Art major, is a National Merit Commended scholar and recipient of the Ehret Art Scholarship. She will attend Vassar College. **NATHANIEL JAFFE**, son of Jon Jaffe and Helen Winslow, is a junior at Brandywine High School. Some of his many hobbies include listening to pop music and playing tennis. Next year he will continue his high school education and after high school he plans on becoming a fisherman.

SAUL JAFFE, the son of Jon Jaffe and Helen Winslow, is an honors student at Brandywine High School and is currently completing his junior year. He has participated in the Varsity soccer team for BHS and is a member of the Spanish Club, Newspaper Club, and is the manager for the Boys Tennis team.

BRIAN ROSEN, the son of Sharon and

GRADUATIONS AND CONFIRMATIONS

Mazel Tov to Delaware Gratz Grads

Jordon Rosen, is a senior at The Charter School of Wilmington. Since freshman year, he has been a member of the Indoor and Outdoor Track and Field Team. He has attended Delaware Gratz Hebrew High School for six years and hopes to graduate with a teaching Certificate. Over the summer, Brian worked at Camp Rodney teaching Astronomy, Space Exploration, Swimming, Oceanography and Environmental Science. Next year, Brian will attend the University of Delaware in the Honors Chemical Engineering program.

BERYL SCHRAGGER, the son of Nancy and Paul Schragger, is a senior at the Charter School of Wilmington. A dedicated member of the B'nai Brith Youth Organization, Beryl served this past year as the Regional Vice President of Judaism and Community Service. He is the captain of his school's state champion academic bowl and math league teams, as well as the tennis team, and he serves as a teenage representative on the Delaware JCC Adult Board of Directors. He is also a varsity soccer player, a National Merit Finalist, a member of the National Honor Society and French Honor Society, and an AP Scholar. Beryl will attend Columbia University next year.

BEN ZUSSMAN, son of Debra and Melvin, is a senior at Concord High School, where he is an honors student, a lacrosse captain, and a member of the Academic Bowl team. He spends his free time having fun with his friends, eating, relaxing with his girlfriend, and playing piano. He plans to go to Haverford College in the fall, and is interested in dentistry or surgery.

Eight other students will be recognized with Certificates of Achievement, Service Learning, Teaching, Merit and Enrichment: **ILENE BLOOM**, the daughter of Joy and Mace Bloom, is a member of the Concord High School class of 2004 and will attend the University of Delaware in the fall. Ilene is involved in numerous activities including

class board, FEA where she is the New Castle County FEA representative, Leader Corps, Class Board treasurer, music editor and drama board treasurer. Ilene plans to major in chemistry at the University of Delaware and then obtain her Ph.D. and pursue a career in chemistry.

LARA GOLDSTEIN, the daughter of Cindy and Lee Goldstein, is a senior at Brandywine High School where she is a co-editor of the yearbook, an active member of the National Honor Society and the Leader Corps, and participates as a student mentor in the community-based program. She is also an officer and an avid member of Wilmington BBOYO. Last spring, Lara received the Governor's Youth Volunteer Service award for her participation at the Mary Campbell Center with her Gratz Service Learning Class. She plans to attend the University of Delaware next year to major in psychology.

STEFANIE GORDON, daughter of Helaine and Richard Gordon, is a 2004 Graduate of Brandywine High School. Besides attending Gratz and Haverot for six years, she has done volunteer work, worked as a tennis instructor, and participated as a co-captain in cross-country, indoor track and tennis. She has been a HOBY representative and co-editor of her high school newspaper. Stef will attend the University of Delaware where she hopes to major in English or Journalism.

ILANA JAFFEY, daughter of Carla and Alan Jaffey, is a senior at Wilmington Friends School where she is the president of the Student Discipline Committee, participates in the Admissions Committee and is the captain of the varsity soccer team. She is involved in the B'nai Brith Youth Organization and participated in the JCC Maccabi Games for four years. She has received her school's Achievement awards in mathematics and for her work on the Student Life committee. She was also awarded eighth in the state on the National Spanish Exam and second in the state for the

University of Delaware's economics contest. She has worked the last two summers as a JCC Summer camp counselor and will work there again this summer. Next year she looks forward to attending the University of Maryland at College Park majoring in marketing.

JENNIFER KAPLAN, daughter of Judy and Bob Kaplan, will graduate from Brandywine High School on June 6th. During high school, she has participated in many clubs and extracurricular activities. She was Secretary of her ninth and tenth grade classes. Jennifer has been on the Mock Trial team for the past two years. She has also been in Key Club, National Honor Society, and Spanish Honor Society for the past two years and volunteers year-round at A.I. duPont Hospital for Children. She has attended Gratz Hebrew High School since 7th grade. Jennifer will attend Washington University next fall, where she plans to major in Biomedical Engineering. She hopes to eventually become a Medical Researcher.

ANNA KLEIN, daughter of Frances and Steven Klein, is a senior at Tower Hill School. She received the American Association of University Women's Award for Excellence in Math and Science in 2003 and a Scholastic Art and Writing Award in 2001. She is the Editor-in-Chief of the school yearbook (The Evergreen) for the second consecutive year. The yearbooks that she has produced received the Walsworth Publishing Co. Award for Excellence in Yearbook Production. Anna's love of music is evident from her leadership of her high school *A Capella* club, as well as her mem-

bership in the schools Band, Chorus and Vocal Ensemble. In sports she was a member of the Varsity Volleyball team and played in the Blue-Gold All-Star Volleyball Game last fall. She reads Torah during the year and at High Holidays at Congregation Beth Shalom and has volunteered for the last two summers at the A. I. DuPont Children's Hospital. Anna will attend the University of Pennsylvania in the fall.

BRIANA ADIE MAMBERG, daughter of Vivian and Elias Mamberg, is a senior at Brandywine High School. She is an active member in Leader Corps, S.A.V.E. Club, Yearbook, Spanish Honors Society and Key Club. She has also been appointed Principal Liaison, secretary of S.A.V.E. Club, Secretary of Spanish Honors Society, and editor of the BHS Yearbook. She also serves as a student mentor amongst community-based children in her school. Recently, Briana was awarded the William V. Roth Citizenship Award and the Governor's Youth Community Service Award. Briana will attend the University of Delaware and plans to major in nursing.

ALAN PLOTZKER, son of Irene and Richard Plotzker, is a senior at Charter School of Wilmington. He is a member of the Chess Club and a player on the Lacrosse Team. Alan is active in Habonim D'ror and a frequent Torah reader at both Adas Kodesh Shel Emeth and Congregation Beth Shalom. Alan enjoys playing electric guitar. Alan will attend the Habonim Dror Workshop in Israel, and then enroll at the University of Pennsylvania. Following college, Alan would like to pursue a career in medical research.



Beth Emeth Confirmands

Mazel Tov to the young men and women who are members of the Confirmation Class of 2004 at Congregation Beth Emeth in Wilmington who will take their place on the bimah on May 26th at 2:00 p.m. Best wishes to:

G. Henry Ball, son of Gail and George Ball.
Zachary E. Barnett, son of Edward Barnett and Janet Macnamara-Barnett
Sara Selzer Bass, daughter of Nancy Selzer and Woody Bass
Bari Berlin, daughter of Robin and David Berlin
Dana Hope Berk, daughter of Patti and Ben Berk
Elizabeth Davis, daughter of Dee and Elliot Davis
Benjamin Aryeh Diner, son of Bruce and Judith Diner
Jason Engelmann, son of Michelle and Glenn Engelmann
Jason Fischel, son of Helen and Brian Fischel
Brett Friedberg, son of Beverly and Bob Friedberg
Sami Colton Godowsky, daughter of Rory and Steven Godowsky
Naomi Hamermesh, daughter of Marion and Larry Hamermesh
Greg Knapper, son of Anne and Ed Knapper
Dave Levin, son of Debbie and Bruce Levin
Heather Lowe, daughter of Beth and Harold Lowe
Rachel Masel, daughter of Terry and Allen Auerbach
James Robert McBride, son of Sandy and Edward McBride
Leah F. Meyer, daughter of Dolly and David Meyer
Erin Slap, daughter of Eve Slap
Mollie Elisabeth Stein, daughter of Shelley and Mark Stein
Jeffrey B. Townsend, son of Karen Epstein Townsend and John B. Townsend
Gregory Eric Wagner, son of Ellen and Bill Wagner

Melton to graduate June 2

This year, the graduating class of the Florence Melton Adult Mini-School in Wilmington, is dedicating their celebration to their teachers, R. Amber Powers, R. Steven Pik-Nathan, and R. Deborah Glanzberg-Krainin.

The students recognize and appreciate the knowledge of Judaism the Melton Faculty brings to the School, the skill with which they guided the class through the Melton curriculum, and the wisdom about Jewish living which they shared with their students.

They acknowledge that they were each others' teachers as well. Their learning was enriched by sharing the two-year journey through Torah, Talmud and the Sages with other adults whose life experiences and points of view challenged and illuminated their understanding of the texts.

Last year's class established the Norman Schutzman Fund for Melton at the Jewish Community Center of

Delaware. This fund is dedicated to providing the Melton School in Delaware with the educational resources required to run a first-rate adult education program. Contributions are welcome in honor of any of the Melton graduates or their teachers.

The community is invited to attend graduation ceremonies which will take place at the JCC of Delaware at 7:30 on Wednesday evening, June 2.

Graduating from Melton will be:

Judith L. Arenson, Eileen Cohen, Susan Margaret Detwiler, Leba Gittelman, Larry Hamermesh, Sonja Hildebrand, Lela E. Nemser, Marlene April Ornston, Elinor S. Mannis, Frances Sara Ratner, Connie Sugarman, and Alison Weiss

For more information about the fund, about the Mini-School or to let us know of your intention to attend graduation, please contact Marion Hamermesh at 302 478-5660 x. 201.

ISRAEL FOCUS

Pressure builds for non-Orthodox marriage

By Dina Kraft, JTA

When Galit Weidman Sassoon got engaged last year, her thoughts turned to the kind of wedding ceremony she and her fiancé, wanted — meaningful, egalitarian and Jewish.

As secular Jews, Weidman Sassoon said the couple felt alienated from Israel's Orthodox religious establishment and wanted a ceremony in which they both could participate fully — from drafting the ketubah to blessing each other while exchanging rings.

In Israel, however, the only Jewish weddings recognized by the state are Orthodox. There is no civil marriage in Israel, and Jews who choose to marry in Conservative and Reform ceremonies are not considered officially married.

In recent years, however, there has been a groundswell of couples seeking alternatives to Orthodox marriage. About one-fifth of Israeli couples now are marrying outside of the rabbinate, according to Freedom of Choice in Marriage, a Jerusalem-based umbrella organization of civil rights groups.

"I was not prepared to even think of having someone from the rabbinate marry us, because it binds me to a ceremony that discriminates against women," said Weidman Sassoon, 33, a doctoral student in linguistics at Tel Aviv University. "It's hard to comprehend in a democratic country that one of the most basic rights people have — that of marrying according to their beliefs — is denied."

Israel's main wedding season begins this week following Lag B'Omer. The debate over marriage is especially urgent given that an estimated half-million immigrants from the former Soviet Union who are not considered Jewish according to halacha, or Jewish religious law,

cannot marry in Israel.

Also affected are male kohanim, or descendants of the priestly caste, who are forbidden under halacha to marry divorced women. The halacha also places marriage restrictions on the children of adulterous unions.

Largely because of the conundrum posed by the immigrants, pressure is building on politicians and a Knesset committee that may pave the way toward civil marriage.

Many Israeli couples fly to Cyprus and marry in civil ceremonies now so common that they have become a booming business for the Cypriot economy. But such travel often is too expensive for young couples, and new immigrants in particular.

Civil ceremonies performed abroad are recognized in Israel, as are marriages performed by Conservative and Reform rabbis overseas.

Though marriages by non-Orthodox rabbis in Israel aren't legally recognized, courts often give the couples common-law status. Still, many Israelis, like Weidman Sassoon and her husband, choose to have two marriages:

One in Israel with a non-Orthodox rabbi that is personally meaningful, and a civil ceremony abroad that is legally binding. "It's absurd that a person married by a Reform rabbi has to then be married by a non-Jewish clerk abroad," said Rabbi Meier Azri, the senior rabbi at Beit Daniel, a large Reform synagogue in Tel Aviv.

But figures in the country's Orthodox establishment argue that because Israel is the Jewish state and sets the standard for Jewish observance around the world, only Orthodox Jewish ceremonies can be legally sanctioned here.

If other marriages are recognized by the state the way Orthodox mar-

riages are, the state would be "conveying a distorted message in regard to Jewish law," said Jonathan Rosenblum, director of Am Echad, an Orthodox media resource organization.

He said Conservative and Reform movements "may be movements made of Jews, but they are not Judaism as traditionally understood because of a lack of allegiance to Jewish law."

Some matters in Jewish law are not up for debate or interpretation, he said, citing marriage and prohibitions on driving on the Sabbath.

Azri, however, said he has seen a "revolution" in the demand for Reform marriages. His synagogue marries some 600 to 700 couples a year, and the numbers keep rising, he said.

The law doesn't affect only Jews. Only people of the same religion can marry each other in Israel, a legal practice that dates to the time of Turkish rule and then the British Mandate. Under both regimes, religious authorities — whether Jewish, Christian or Muslim — had sole jurisdiction over marriage.

To date it has been impossible to pass legislation endorsing freedom in marriage ceremonies, in part because of the clout of Israel's religious parties. In March, another such bill was solidly defeated on the Knesset floor, but one of its initiators said advocates would not be deterred.

"We will keep pushing for our legislation, even if it has a slim chance of passing, because it gets the issue on the public agenda," said Zamira Segev, Freedom of Choice in Marriage's coordinator.

The issue was prominent on Shinui's platform last year when the party won a whopping 15 Knesset seats.

Ronny Brison, Shinui's coordinator for issues of religion and state,



Secular Israelis Eran Banai, second from right, and Inbal Cohen are married in Kfar Vitkin in a Reform ceremony in August 2002.

Credit: BP Images/JTA

now is on the Knesset committee seeking a solution for the marriage issues of some 300,000 to 400,000 immigrants from the former Soviet Union who are not Jewish according to halacha, or do not have documentation to prove their Jewishness.

"It's hard to change the Orthodox monopoly because it's enshrouded in much psychology and mysticism. Those who are against it are those who say it will end the Jewish nation, that it's breaking up the country," Brison said. "These are not arguments that stand the test of logic or law and a pluralistic democratic outlook," but they carry weight "in a country that struggles with how to define itself."

As alternatives to Orthodox weddings become more socially acceptable, so too do their place in

popular culture. The women's magazine "L'isha" featured information on ceremony options in its most recent issue, and information booths by civil rights organizations now are a standard feature of wedding fairs where couples shop for caterers and DJs.

Rabbi Ehud Bendel, president of the Masorti, or Conservative, movement in Israel, said couples are looking to inject meaning into ceremonies that in some cases have become afterthoughts.

"For most Israelis, the chuppa takes place in a corner where some pay attention but most people are chatting, drinking, and smoking," Bendel said. "We are trying to bring the ceremony into the center of the evening and have the couple be active partners in shaping the character of the ceremony."

Myths and Facts

MYTH #140

"Resolution 242 requires Israel to return to its pre-1967 boundaries."

FACT:

The most controversial clause in Resolution 242 is the call for the "Withdrawal of Israeli armed forces from territories occupied in the recent conflict." This is linked to the second unambiguous clause calling for "termination of all claims or states of belligerency" and the recognition that "every State in the area" has the "right to live in peace within secure and recognized boundaries free from threats or acts of force."

The resolution does not make Israeli withdrawal a prerequisite for Arab action. Moreover, it does not specify how much territory Israel is required to give up. The Security Council did not say Israel must withdraw from "all the" ter-

ritories occupied after the Six-Day War. This was quite deliberate. The Soviet delegate wanted the inclusion of those words and said that their exclusion meant "that part of these territories can remain in Israeli hands." The Arab states pushed for the word "all" to be included, but this was rejected. They nevertheless asserted that they would read the resolution as if it included the word "all." The British Ambassador who drafted the approved resolution, Lord Caradon, declared after the vote: "It is only the resolution that will bind us, and we regard its wording as clear" (Prosper Weil, "Territorial Settlement in the Resolution of November 22, 1967," in John Moore, ed., The Arab-Israeli Conflict, NJ: Princeton University Press, 1974, p. 321).

This literal interpretation, without the implied "all," was

repeatedly declared to be the correct one by those involved in drafting the resolution. On October 29, 1969, for example, the British Foreign Secretary told the House of Commons the withdrawal envisaged by the resolution would not be from "all the territories" (Abba Eban, Abba Eban, NY: Random House, 1977, p. 452). When asked to explain the British position later, Lord Caradon said: "It would have been wrong to demand that Israel return to its positions of June 4, 1967, because those positions were undesirable and artificial" (Beirut Daily Star, June 12, 1974).

Similarly, Ambassador Arthur Goldberg explained: "The notable omissions — which were not accidental — in regard to withdrawal are the words 'the' or 'all' and 'the June 5, 1967 lines'....the resolution speaks of withdrawal from occu-

pied territories without defining the extent of withdrawal" (speech to AIPAC Policy Conference, May 8, 1973).

The resolutions clearly call on the Arab states to make peace with Israel. The principal condition is that Israel withdraw from "territories occupied" in 1967. Since Israel withdrew from approximately 93 percent of the territories when it gave up the Sinai and portions of the Gaza Strip and West Bank, it has already partially, if not wholly, fulfilled its obligation under 242.

The Arab states also objected to the call for "secure and recognized boundaries" because they feared this implied negotiations with Israel. The Arab League explicitly ruled this out at Khartoum in August 1967, when it proclaimed the three "noes." Amb. Goldberg explained that this phrase was

specifically included because the parties were expected to make "territorial adjustments in their peace settlement encompassing less than a complete withdrawal of Israeli forces from occupied territories, inasmuch as Israel's prior frontiers had proved to be notably insecure."

The question, then, is whether Israel has to give up any additional territory. Now that peace agreements have been signed with Egypt and Jordan, and Israel has withdrawn to the international border with Lebanon, the only remaining territorial disputes are with the Palestinians (who are not even mentioned in 242) and Syria. The dispute with Syria is over the Golan Heights. Israeli Prime Minister Yitzhak Rabin expressed a willingness to negotiate a compromise in exchange for peace;

See MYTHS & FACTS, PAGE 13

MATTER OF OPINION

The Anti-Semitism Conference: An Inside Look

By Betty Ehrenberg

My arrival on a rainy late April morning in gray Berlin was the beginning of an experience for which I had prepared for weeks, ever since Secretary of State Powell appointed me as a member of the United States delegation to the Conference on Anti-Semitism, which was being convened under the auspices of the Organization for Security and Cooperation in Europe (OSCE), the third most important European regional group, after NATO and the European Union.

I couldn't help but think of the irony of the setting. Fifty-nine years after the fall of Berlin and the end of the Holocaust, here I was, the daughter of an Auschwitz survivor and a Kristallnacht refugee, in the Foreign Ministry of the Federal Republic of Germany, steps away from what had been the seat of Hitler's government and a few miles from Wannsee, where the Holocaust was planned. I had come to Berlin to join a thousand people from all over Europe, Central Asia, and North America, to confront the rising tide of anti-Semitism — not as history, but as current event. Here in Berlin, fifty-five countries had come together to denounce anti-Semitism and commit to take measures to fight it.

The members of the U.S. delegation, with whom I had worked

for years in my capacity as Director of International and Communal Affairs of the OU, worked together seamlessly — and I was proud to be among them. Headed by the inimitable Ed Koch, the former mayor of New York whose legendary lack of reticence proved especially useful and appropriate in forums and meetings, we were guided by Ambassador Stephen Minikes, the United States Ambassador to the OSCE, a determined fighter and seasoned diplomat with a unique direct style. Representatives Chris Smith (R-NJ) and Ben Cardin (D-MD) were the Congressional delegates. Watching the three of them "working" the various delegations, proposing and persuading, was both an inspiration and eye-opener. Partisanship was completely laid aside as they worked determinedly to see that the goals of the Conference would be achieved. I was inspired by their sincerity and profound dedication to the cause.

The presence of Secretary of State Colin Powell compounded the excitement; I couldn't help noticing that all eyes followed him wherever he went. With his presence the glamour and prestige of the Conference increased exponentially and made it clear that there would be meaningful results and not just talk.

Were it not for the combined determination of the Bush

Administration and German Foreign Minister Joschka Fischer, the Conference would not have taken place. Almost sixty years have passed and the former enemies in World War II were now the staunchest allies pushing the rest of the world to stamp out an age-old vicious hatred. The Conference had originated as the brainchild of Smith, Cardin, and German professor and Member of Parliament Gert Weisskirchen, a passionate activist with a shock of white hair falling into his eyes, whose contagious enthusiasm seemingly influenced everyone. The three are living proof, I thought, of how only a few individuals can make a great difference.

One-on-one meetings by our group with individual delegations — such as France, the United Kingdom and Israel — were an integral part of the proceedings. I entered a meeting just in time to hear the British minister end a sentence with, "...and we oppose the targeted assassinations," then watch Koch disdainfully respond with, "And if you came up against Bin Laden today, wouldn't you see fit to get rid of him?" to which the minister had no good reply.

In answer to the former Mayor's perpetual question, "How am I doing?" the answer was, "Just fine, Ed."

I delivered my speech on the "new" anti-Semitism on April 29,

and it did not escape me that this was one day shy of fifty-nine years since Adolph Hitler committed suicide in his bunker in Berlin on April 30, 1945. In the great hall of the German Foreign Ministry I thought of my parents, and filled with emotion, I declared:

"This new anti-Semitism is like a cancer that can quickly infect many countries. The same radicalized extremist Muslims who threaten Jews perpetrated the horrific bombing of Spain's commuter railway. The Spain attack, like those in Istanbul and at the Pentagon, are important wake up calls for all of us. When civilized nations fail to combat anti-Semitism, it is only a matter of time before those who hate the Jews spread their hatred towards others. Jews may be the first victims and targets, but they are never the last ones. Self-interest, then, to say nothing of simple decency, requires the nations of the OSCE region to act vigorously to extinguish resurgent anti-Semitism."

Not too many years ago one could not have imagined that we, hundreds of Conference delegates, would be standing on the steps of the Chancellery, listening to the words of welcome from a German Chancellor to an Israeli President, as Gerhard Schroeder greeted Moshe Katzav. As I watched the German and Israeli flags waving side by side through the window, I

could only wonder at the strange twists and turns of history.

The gathering began with Eli Weisel sounding the alarm and closed with Natan Sharansky's warnings and the emphatic bang of the gavel. The Conference Chairman's final Declaration was unprecedented in Europe: a resounding condemnation of all acts of anti-Semitism and the commitment of fifty-five countries to act decisively against it. The problem, of course, is far from solved, but contrary to the skepticism of some critics, the achievements of the Conference were significant. Demonization of Israel was identified for what it is — anti-Semitism. For the first time, OSCE members will commit to monitoring hate crimes, tracking bias crime statistics and issuing public reports. Best practices to help prevent anti-Semitism and racism would be shared. For once, the disease would be diagnosed and could be treated.

The world is finally confronting the poison of anti-Semitism. We must redouble our efforts on a global scale to protect our freedoms and to make it ever more difficult for anti-Semitism and bigotry to take root.

Betty Ehrenberg is Director of International and Communal Affairs of the Orthodox Union. She was the only female member of the U.S. Delegation to last week's Conference on Anti-Semitism in Berlin.

Was Berg targeted as a Jew

Continued from page 1

Ledger recalled how when her son, Matt, first went to the Iraq war theater before the conflict began, she urged him to remove the word "Jewish" from his military dog tags. But he refused, saying, "I don't want a priest praying over me if I get killed."

Some Jewish organizational officials echoed Kashnow's view that Berg's murder, combined with Tuesday's videotaped killing of six Israeli soldiers by Palestinians in the Gaza Strip — should deepen the commitment of Jews and other

Americans to the war on terrorism.

"This is an evil force that has no moral compunction at all," said Malcolm Hoenlein, executive vice chairman of the Conference of Presidents of Major American Jewish Organizations.

Referring to the video showing an Iraqi holding Berg's severed head aloft and shouting, "Allahu akbar," or "God is great" — and footage of Palestinian militants proudly displaying an Israeli soldier's head and other body parts — Hoenlein said the two cases point to the same enemy.

"Their barbarism could not be more clear after today. On both fronts it's the same menace," he said.

On the video, Berg's captors said the killing was to avenge the abuse of Iraqi prisoners by American soldiers.

The parents of Daniel Pearl, who immigrated to Los Angeles in the 1960s from Israel, prepared a statement for the media after news of Berg's killing circulated Tuesday.

"We have heard from the news about the videotape showing the tragic death of Nicholas Berg in Iraq. Our thoughts and prayers are with his family and friends at this extremely difficult time," the statement said.

"Our heart goes out to them. Kidnapping, torture, humiliation and murder must have no place in this world," the statement went on. "We call on people of principle

around the world to help stop the madness and take a stand for humanity."

Ironically, Berg's father, Michael, and his small business, Prometheus Methods Tower Service Inc., were listed as endorsers of a coalition called Act Now to Stop War and End Racism. The coalition opposed the Iraq war, though Nicholas Berg reportedly supported it.

Berg was in Iraq as a freelance contractor working to repair communications antennae. The Associated Press reported. His family members said they had known of their son's death since the weekend but did not know of the video until it surfaced this week.

The family last heard from Berg on April 9, as he was preparing to return to the United States via Jordan. U.S. officials recovered Berg's remains May 8.

The circumstances of his cap-

ture are unknown.

He had planned to return home at the end of March, but his parents told reporters he didn't come home as scheduled and that the FBI had told them their son was in jail in Iraq.

In West Chester, meanwhile, his family and friends were mourning the loss of someone universally praised as a caring soul.

"Nick was probably one of the most amazing men I've ever met," said Aaron Spool, a friend of Berg's since they were in the seventh grade. "He just touched everyone's life. West Chester is going to be a much emptier place without him. He was good man, a good Jew. It's tough. It's very hard."

(JTA Washington bureau chief Ron Kampeas, JTA staff writer Matthew E. Berger in Washington and the Philadelphia Jewish Exponent contributed to this report.)

Myths and Facts

Continued from page 12

however, then-President Hafez Assad refused to consider even a limited peace treaty unless Israel first agreed to a complete withdrawal. Under 242, Israel has no obligation to withdraw from any part of the Golan in the absence of a peace accord with Syria.

It is also important to realize that other Arab states — such as Saudi Arabia, Iraq and Libya — that continue to maintain a state of war with Israel, or have refused to grant Israel diplomatic recognition, have no territorial disputes with Israel. They have nevertheless conditioned their relations (at least

rhetorically) on an Israeli withdrawal to the pre-1967 borders. Although ignored by most analysts, Resolution 242 does have other provisions. One requirement is that freedom of navigation be guaranteed. This clause was included because a principal cause of the 1967 war was Egypt's blockade of the Strait of Tiran.

Source: *Myths & Facts Online — A Guide to the Arab-Israeli Conflict* by Mitchell G. Bard, <http://www.JewishVirtualLibrary.org>. This feature is presented as a public service by the Hasbara Committee of the Jewish Federation of Delaware and the Jewish Voice.

Jewish War Veterans need community help

The Jewish War Veterans of Delaware is in the process of compiling a complete list of Jewish War Veterans and Vietnam veterans who were killed or died during World War II or during the Vietnam era.

Department Commander Arthur Samuelsohn traveled to The Hall of Records in Dover recently to review the listings of Jewish veterans who are listed in the Book of Delaware History of Veterans of World War II — 1941-1945. He was unable to find information on the following Delaware veterans:

Nathan Burstam, Rupert Burstam, Charles Spiegel, Nathan Aerenson

Data on Zane Glazer, who served in Vietnam, would also be appreciated.

If you have any information on the above servicemen, please contact Samuelsohn at 302-762-5519 or 302-762-6756. If you prefer, you can mail him the information at 3209 Heather Court, Wilmington, DE 19809.

MILESTONES

In Memoriam

RUTH LUDWIN JACOBI

Ruth Jacobi, 82, died peacefully in her sleep at home on May 12, 2004. She is survived by her husband, Lou Jacobi, her sister, Estelle Dubin Steiger, and many loving nieces and nephews.

Ruth devoted much of her life to Jewish causes, including serving as National V.P. of Hadassah and speaking on behalf of UJA and Israel Bonds. After marrying Lou, Ruth dedicated herself to his career in the theater, film and television. A true New Yorker, Ruth brought a lust for life and a passion for people wherever she went.

Funeral services will be held

on Sunday, May 16, 2004 at 12:30 p.m. at the Gutterman Musicant Funeral Home, 402 Park Street, Hackensack, NJ. Burial will follow at the Cedar Park Beth El Cemetery in Paramus, NJ. Contributions in her memory may be made to The Jewish Federation, c/o Sam Asher Exec. VP, Jewish Federation of Delaware, 100 West 10th Street, Suite 301, Wilmington, DE 19801.

KUSS

Erika Kuss, 78, born in Prussia and a former resident of Omaha, Nebraska, died peacefully at the Milton and Hattie Kutz Home on

Thursday, May 5th.

She was a survivor of a Russian concentration camp. She worked in Germany until emigrating with her children to the United States in 1960. Mrs. Kuss came to America with only \$5 in her pocket and, despite being degreed as an accountant in her homeland, took many menial jobs to support her family. Once she learned English, Mrs. Kuss was able to find work for the Bell Telephone Company and for Creighton, where she worked until her retirement.

Friends and family recalled her generosity, kindness and positive

outlook on life. Her children, Marie K. McIntosh of Wilmington and Frankford, DE and Hans J. Kuss of California, remember that she instilled in them a love of reading and a desire to excel academically.

Services, arranged by Schoenberg Memorial Chapel, were private.

In appreciation for the compassionate care that Mrs. Kuss received during her stay at the Kutz Home, the family requests that memorial contributions be directed to the agency at 704 River Road, Wilmington, DE 19809.

ROSENBERG

Gladys Rosenberg passed away on May 3rd. She will be missed by her husband, Joseph; her daughters, Barbara Reitzes and Dale Tuber and their husbands, Marc and Herbert; and her beloved grandchildren, David, Peter, Rebecca and Brandon.

Graveside services were held on May 7th at Brookhaven Cemetery in Brookhaven, PA.

Contributions in her memory would be appreciated to the Wilmington Chapter of Hadassah or to the Sisterhood of Ohev Shalom Congregation in Wallingford, PA.

NACHAS NOOK

Honors and Achievements



Bernard L. Siegel

The Elkton Chamber of Commerce has named Bernard L. Siegel as its 2003 Citizen of the Year.

Born and raised in Baltimore, Maryland, Bernie moved to Elkton after completing his military service. There, he opened Colonial Jewelers, which will mark 60 years in business in November, 2004. He also started the Plasticoid Company in Elkton, a rubber stopper factory that he owned for 40 years.

Jewish Voice readers know of Bernie and his wife, Ruth's deep involvement in the leadership of the Jewish Federation of Delaware and many of its beneficiary agencies. However, they may be unaware of

Bernie's long-time commitment to Elkton's business, civic and charitable organizations.

He was the founder and director of Cecil Federal Savings Bank and served on its Board of Directors until 2000. His tenure as Chairman of the Building Fund for the original YMCA earned him the agency's Award for Service to Youth. Other community organizations benefiting from his volunteer leadership include: the United Way; the American Red Cross and the Elkton Chapter of the National Foundation for Infantile Paralysis.

Bernie received his award during a banquet on April 22nd.

Rubenstein, Hartstein to marry

Harvey Bernard Rubenstein announces the engagement of his daughter, Alison Brooke Rubenstein, to Joel M. Hartstein. Alison is the daughter of the late Myrna Lornish Rubenstein. Her fiancée is the son of Mr. and Mrs. Elliott Hartstein, of Buffalo Grove, Illinois.


Alison graduated from Brandywine High School and Bates College. She received a master's degree from the Newhouse School of Public Communication of Syracuse University and graduated with honors from Villanova University Law School. She is an Assistant District Attorney in Philadelphia, PA.

Joel graduated from Brown University with a dual degree in Business Economics and Public Policy. He is a manager at Comcast Corporation in Philadelphia.

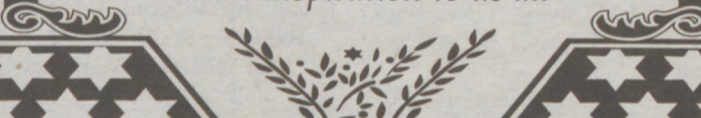
A May, 2005 wedding is planned.



Alison Rubenstein
and Joel M. Hartstein



*The Officers and Board of Directors
of the Jewish Federation of Delaware
express its profound sorrow and
collective horror at the tragic death of
Nicholas Berg at the hands
of terrorists in Iraq
May G-d bless his parents,
Michael and Suzanne,
and sustain them during
this time of mourning.
Mr. Berg's bravery and commitment
to humanitarian service should serve
as an inspiration to us all*



Congratulations!

Elyse P. Vincent, daughter of Burt and Sheila Krinsky, received her degree in Elementary Education from Wilmington College on May 5th. Elyse graduated summa cum laude and is an inductee to the Delta Epsilon Rho Honor Society. She has set a wonderful example for her children, Brent and Cassidy. Also beaming with pride is Elyse's husband, Frank, an educator at the Pilot School.

Schoenberg Memorial Chapels



In the hallowed tradition of
our faith...

a dignified setting with
reverence for customs and
observances in strict accord
with family wishes.

**519 Philadelphia Pike
762-0334**

CECIL VAULT & MEMORIAL CO.

**FAMILY BUSINESS FOR OVER 50 YEARS
CONNIE & DAN CECIL**

**5701 Kirkwood Highway - Wilmington, Delaware 19808
(302) 994-3806 Toll Free 877-994-3806 Fax (302) 994-3232**

MONUMENTS

**Granite: We use only the best granite available
Bronze Markers, Marble & Mausoleums
Flexible Payment Plan Available
Inscription Work Provided**



**Jewish Fund
for the Future**

The Endowment of the
Jewish Federation of Delaware

Spring/Summer 2004 Newsletter

www.shalomdelaware.org Phone 302-427-2100



**JEWISH FEDERATION
OF DELAWARE**

Jewish Fund for the Future
100 W. 10th Street, Suite 301
Wilmington, DE 19801-1628

Toni Young announces New Lion of Judah Endowment Fund

Toni Young announced her Lion of Judah Endowment (LOJE) on May 18 at the Lion of Judah Luncheon held at Iris Tocker's home. Through a LOJE, Lions perpetuate their gifts to the Jewish Federation of Delaware's annual campaign.

A LOJE can be created by the donor to fit their philanthropic and financial goals, during their lifetime and beyond. Toni Young joins Miriam Edell and Barbara Schoenberg, as Jewish Fund for the Future LOJE donors. The Lion of Judah is a national level-recognizing women that contribute a minimum of \$5,000 to the annual campaign.

The LOJE program is a major gifts component to National Women's Phi-

lanthropy and is the standard for excellence in Jewish leadership and charitable giving. A LOJE allows you to, in your own personal way, help secure a strong and vibrant Jewish community for your children and grandchildren to enjoy. There are a number of funding vehicles available to establish a LOJE, please see Ways to Give to the Jewish Fund for the Future, on this page.



Pictured left to right, Lion of Judah Endowment (LOJE) donors, Barbara Schoenberg, Toni Young, and Miriam Edell. A LOJE perpetuates a woman's annual campaign gift to the Jewish Federation of Delaware.



Enjoying the participatory show were (left to right) Suzanne Grant, Sam Grant, and Jake Grant with the traveling scientist. The exciting program was brought to AEA with funding made possible by an endowment established by the Grant family (Stuart, Suzanne, Niki, Jake, and Sam) in honor of Niki's 2003 graduation from Albert Einstein Academy.



Pictured above are two of Albert Einstein Academy's space explorers, Jake Grant (left) and Sam Kogon (right) along with a scientist from the Franklin Institute. The Ilan Ramon Memorial fund is named in memory of the first Israeli astronaut that passed in the Columbia Shuttle disaster. Any donor can make a contribution to the fund.

Endowment Fund Supports Science Show at Albert Einstein Academy

The Franklin Institute Traveling Science Show brought a special program on flight to the Albert Einstein Academy this school year. The traveling scientists used demonstrations and hands-on teaching techniques developed in The Franklin Institute Science Museum to make learning fun. The children explored the exciting history of flight—from Leonardo da Vinci to the Space Shuttle, investigated the Bernoulli Principle and learned how airplane wings provide lift. Mechanical birds, hot air balloons,

gliders, and even a rocket launch were used to demonstrate the forces of flight.

The Ilan Ramon Memorial Fund for the Study of Science and Space of the Jewish Fund for the Future provided the opportunity for the children to see this stimulating program. This endowment fund was established to support special projects, trips, assemblies, etc. geared to the teaching of science or space exploration at Albert Einstein Academy.

Stuart, Suzanne, Nicole "Niki", Jake, and Sam Grant created this endowment fund in honor of Nicole, who graduated from the Academy in June 2003. The purpose of the fund is to generate monies annually and augment the regular science curriculum with an annual special activity.

Albert Einstein Academy serves students from Pre-Kindergarten through 6th grade from Delaware and Southeastern, Pennsylvania and is a constituent agency of the Jewish Federation of Delaware.

Inside this issue:

What is the Jewish Fund for the Future & JFF Board Listing	2
Types of Endowment Funds	2
Endowment Fund Listing	3
L'Chaim Circle Donor Listing	4

Ways to Give to the Jewish Fund for the Future

Thank you for considering a gift to the Jewish Fund for the Future. Listed below are a number of options for supporting the endowment:

- ◇ Outright gift of cash, stock, real estate or other assets
- ◇ Bequest/will
- ◇ Life insurance
- ◇ IRA or pension plans
- ◇ Charitable remainder trusts
- ◇ Charitable lead trusts

Named Endowment Funds At-A-Glance

- ◇ Provides annual income for organizations you wish to support
- ◇ May be created now or through your estate plan
- ◇ Offers tax benefits for you or your estate
- ◇ May be created with a variety of assets

The Ramon Memorial Fund is a restricted fund, the Grant family designated what agency and programs would be supported by the endowment. Each year a portion of the income of the fund is distributed to AEA.

Donors may establish a named restricted fund as a memorial or in honor of someone. Ilan Ramon was the Israeli astronaut that died in the space shuttle disaster in 2003.

Jewish Fund for the Future Board of Trustees

Toni Young, Chair
Eileen T. Conner
Dr. Steven A. Dombchik
Miriam F. Edell, Esq.
Ruth Ann Ger
Muriel E. Gilman
Suzanne B. Grant
Leslie Newman
Joseph M. Nicholson, Esq.
Barbara H. Schoenberg
N. Norman Schutzman
Bernard L. Siegel
Ginger Weiss
Barbara E. Yalisove

Investment Committee
Suzanne B. Grant, Chair
Dr. Steven A. Dombchik
Elliott Golinkoff
Richard A. Levine, Esq.
Martin G. Mand
Barbara H. Schoenberg

*Grants Committee (Esther
Sherman McDonald
Endowment Fund for Israel
and Goldinger Trust)*
Muriel E. Gilman, Chair
Dr. Steven A. Dombchik
Ruth Ann Ger
Toni Young

Legal and Tax Chair
Joseph M. Nicholson, Esq.

Marketing Committee
N. Norman Schutzman
Barbara E. Yalisove

Jewish Fund for the Future
Jennifer S. Young,
Endowment & Women's
Philanthropy Director
Gina M. Kozicki, Endowment
Administrative Assistant

*Jewish Federation of
Delaware*
Barry S. Kayne, DDS,
President
Samuel H. Asher, Executive
Vice President

Your commitment to secure the future of the Jewish people is a sacred covenant. By giving, you are teaching important values of leadership and responsibility to your family, friends, and community.

What is the Jewish Fund for the Future

The Jewish Fund for the Future is the planned giving and endowment arm of the Jewish Federation of Delaware. In 1985, several progressive families in Delaware organized the Jewish Community of Delaware Endowment Fund to provide for the future needs of the Jewish community here and abroad. Today, this Jewish Fund for the Future provides the necessary financial capital to help the community plan for the future.

Endowment funds supplement the Annual Campaign, provide seed money for creating new initiatives, and ensure the survival and long-term stability of existing programs upon which so many in our community depend.

Partnering with the Jewish Fund for the Future to plan your charitable giving can provide unique in-

sight into important Jewish community priorities and needs.

Over 65 individuals and families have established funds with the Jewish Fund for the Future. We also hold endowments for each of our six beneficiary agencies and several area synagogues. The endowment began with \$300,000 in the 1980s, and in the last 10 years the fund has grown from **\$3.6 million to over \$14 million**. In the last two years the Jewish Fund for the Future distributed **nearly \$1 million in grants** benefiting a diverse array of cultural, educational, social and humanitarian causes including our local synagogues and agencies.

The goals of the Jewish Fund for the Future are to develop funds which will form a permanent base of support for our local commu-

nity, agencies and programs; to assist individuals and families to achieve their philanthropic goals in an efficient manner; and to work with estate, tax, and financial planning professionals to provide current information pertinent to charitable giving.

As my parents planted for me before I was born, so do I plant for those who will come after me
Talmud Taanit 23a

Charitable Bequest At-A-Glance

Protect the people you love. Create a lasting partnership with the Jewish community. Help ensure its future. Your will makes it possible.

◇ Provides permanent resources for organizations important to you

◇ Established through your will

◇ May be made in any amount—no matter how small or large

◇ Provides a tax deduction for your estate

Achieve Your Philanthropic Goals Through the Jewish Fund for the Future

We offer a variety of giving programs tailored to each individual donor's needs - the donor decides how and where endowment funds are used and directed.

Unrestricted Funds: Gifts of any amount to the Endowment Fund of the Jewish Federation of Delaware, Inc.

Philanthropic Funds: Donor advised funds that allow you to better manage your charitable giving. Minimum \$5,000 to establish a donor advised fund.

Restricted Funds: Gifts targeted toward specific agencies, programs, field of interest, or need.

Perpetual Annual Campaign Endowments/Lion of Judah Endowments: Gifts that sustain your contribution to the Annual Campaign in perpetuity (PACE/LOJE) suggested minimum 20 times donor's annual gift.

Life Income Gifts: Gifts that provide you, your spouse or loved one with income during your lifetime and sustain the Jewish community when you are gone.

Life Income Plans are an Important Part of Planned Giving

As people approach or start to think about retirement, they often wonder how they will ensure a steady income for themselves while maximizing whatever tax breaks are available. Highlighted below are many of the charitable planning options available to you.

Charitable Remainder Trusts create a legacy in the donor's name and provides income from the trust for life or for a specific term of years. Variations of this program are called a **Charitable Remainder Unitrust** or **Charitable Remainder Annuity Trust**. Eventually the amount remaining in the trust passes to the

Jewish Fund for the Future. Can be created by lifetime gifts or under a will.

Charitable Lead Trusts (CLT) are the opposite of remainder trusts. Income from these trusts is paid to Jewish Fund for the Future for a term of years or a lifetime. The trust property is distributed to you or your beneficiaries at the end of the term of the trust. Depending upon how the trust is structured, significant income, estate or gift tax savings are possible.

Charitable Gift Annuities enables the donor to make a meaningful gift, receive a fixed stream of retirement

income for life, and derive significant income tax benefits. In exchange for the irrevocable transfer of cash or marketable securities, the Jewish Fund for the Future agrees to pay the donor a fixed annual sum. The payment may continue after the donor's death to a surviving spouse. In addition to the income tax charitable deduction realized in the year the gift is made, and the subsequent cash savings from the tax deduction, a portion of the annuity payment is tax-free, since it represents the portion of the return of the principal that was the charitable gift.

Jewish Fund for the Future Endowment Funds

A planned gift to the Jewish Fund for the Future/Jewish Federation of Delaware is a permanent resource ensuring the future and strength of the Jewish community. The following endowments have impacted the community through grants for educational, cultural, health & welfare programs in Delaware, Israel and around the world.

Page 3



The Jewish Fund for the Future benefit a diverse array of cultural, educational, social & humanitarian causes including our local synagogues & beneficiary agencies, other local social service & charitable organizations, & national Jewish causes. In addition, the Jewish Fund for the Future awards scholarships for study in Israel, Jewish education, and leadership training, including a recent grant towards the Jewish Federation of Delaware's Community Leadership Institute (CLI). CLI is training over 20 leaders in the community.

Alexander Family Fund
 Bucholtz Family Charitable Trust
 Theodore H. Ashford Award Fund
 Carole & Barry Bakst Philanthropic Fund
 Jack Barsha Kutz Home Fund
 Beacon Philanthropic Fund
 Julia B. Blumberg Memorial Fund
 Burial Fund
 Mildred & Herman Cohen Philanthropic Fund
 Ernst & Terry Dannemann Philanthropic Fund
 Thelma & Louis Deitcher Philanthropic Fund
 Steven A. & Rhoda S. Dombchik Philanthropic Fund
 Miriam F. Edell Lion of Judah Endowment
 Steven & Miriam Edell Philanthropic Fund
 Edelsohn Family Fund
 Irwin & Mimi Engelson Perpetual Annual Campaign Endowment Fund
 Nisson & Rona Finkelstein Philanthropic Fund
 Nisson A. Finkelstein Scholarship Fund
 Gilman Family Philanthropic Fund
 General Fund, Frances Glenn Philanthropic Fund and Trust
 In Memory of the Descendants of Lena and Berel Goldinger Trust
Nicole J. Grant Endowment Fund
 Stuart & Suzanne Grant Philanthropic Fund
 Joseph & Marion Greenbaum Scholarship Fund
 Samuel & Sarah R. Greenbaum and Family Fund
 Grumbacher Family Fund
 Daniel & Zelda Herrmann Fund
 Douglas Daniel Herrmann Philanthropic Fund
 Stephen E. & Susan A. Herrmann Philanthropic Fund
 Esther & Harry Jacobs Philanthropic Fund
Jerusalem Study Fund
 Kimmel-Spiller Fund
 Constance S. Kreshtool Philanthropic Fund
 Pearl Kristol Endowment Fund
 Kutz Assistance Fund
 Sarah A. Leven Fund
 Richard A. Levine Family Fund
Dr. Charles and Ruth Levy Unrestricted Fund
 Lord's Fund
 Mand Family Philanthropic Fund
Margules Family Philanthropic Fund

Harold E. and Margaret H. May
 Philanthropic Fund
 Esther Sherman McDonald Endowment
 Fund for Israel
 Newman Family Fund
 Nomis Philanthropic Fund
 Dr. Otakar J. & Perry P. Pollak
 Endowment Fund
 Halina Wind Preston Memorial Fund
**Ilan Ramon Memorial Fund for the
 Study of Space & Science**
 Barbara H. Schoenberg Lion of Judah
 Endowment
 Isadore Reitzes Memorial Fund for
 Jewish Education Scholarship Fund
 Isador & Ida Schutzman Restricted Fund
 Isador & Ida Schutzman Unrestricted Fund
 N. Norman and Helen T. Schutzman Philanthropic Fund
 N. Norman and Helen T. Schutzman Charitable Remainder Unitrust
 Bernard L. Siegel & Ruth B. Siegel Endowment
 Ethel & Albert Simon Fund
 Simon/Spiller Fund
 Gilbert J. Spiegel Memorial Fund
 T & S Philanthropic Fund
 Ruth & Sheldon Weinstein Philanthropic Fund
 Barbara E. Yalisove Charitable Remainder Unitrust
 Martin B. & Barbara E. Yalisove Philanthropic Fund
 Wahl Campaign Endowment
 Harry & Jeanette Weinberg Endowment
 Richard & Serena Winer Philanthropic Fund
Harvey L. Young Charitable Gift Annuity
Toni Young Lion of Judah Endowment

Gifts through wills

Several donors notified us of their plans to include the Jewish Fund for the Future in their wills

Anonymous Insurance Policies* (4)

Ginger Weiss*

*expectancy

Bold indicates a new fund established in 2003-2004

Synagogue & Agency Funds

Our community is fortunate to have many outstanding Jewish agencies that provide services and programs. We are pleased that all of our agencies and most of the synagogues in the area have established endowments with the Jewish Fund for the Future. Individuals interested in establishing an endowment for their synagogue or an agency are encouraged to discuss the opportunity with the Jewish Fund for the Future.

Adas Kodesch Shel Emeth
 Bluestone Education Fund
 Library Fund
 Berlin School Fund
 Berlin Chapel Fund
 Jules Segal Fund
 Victor and Dora Rubin Fund
 Mark I. Cheitlin Scholarship Fund
 Leo Brenner Holocaust Study Memorial Fund
 Adas Kodesch Endowment Fund
 Torah Project
 Blum Minyonaire
 Kauffman Building Maintenance Fund
Albert Einstein Academy
Chabad Lubavitch of Delaware Fund
Congregation Beth Shalom Kraft Education Foundation
Delaware Gratz Hebrew High School
 Elaine Friedberg Special Education Initiative Fund
 Bernard and Ruth Siegel Equipment Fund
 Delaware Gratz Hebrew H. School General Fund

Finkelstein Endowment Fund
Jewish Community Center
 Jewish Community Center Adult Fund
 Stanley W. Balick Memorial Fund
 Campus Maintenance Fund
 Mark Caplan Youth Sports Fund
 Frank & Yetta Chaiken Scholarship Fund
 Mindy Curley Scholarship Fund
 Dan Ehrenfeld Fund
 Paul Green Memorial Fund
 Jack S. Jacobs, M.D. Infant Center
 Children's Library Fund
 Doris and Irving Morris Leadership Fund
 Alfred "Henry" Nord Scholarship Fund
 Podolsky Lunch and Learn Fund
 Professional Staff Development Fund
 Laura Fogel-Schagrin Scholarship Fund
 Friends of the Senior Center Fund
 Sol Tourmarkine Family Education Fund
 Barbara Weiner Fund

Aerenson/Weiner Fund for Education
 Endowment Professional Fund
 Richard A. Silverman Fund
 Martin I. Lubaroff Scholarship Fund
 Second Century Fund
Jewish Family Service
 Elaine S. Pizer Fund
 Martin Sloan Fund
 Restricted JFS Salaries and Benefits Fund
 General Fund
 Jewish Volunteer Network Fund
Barrett Family Fund
Engelmann Family Fund
Blumberg Family Fund
Jan and Michael Weiss Fund
Milton and Hattie Kutz Home
 General Fund
 Kutz Home Capital Fund
Kutz Home Auxiliary Fund

A planned gift to the Jewish Fund for the Future/Jewish Federation of Delaware is a permanent resource ensuring the future and strength of the Jewish community. For information on giving opportunities, including commemorative gifts in honor of a bat mitzvah, memorial funds, bequests, and planned giving, as well as support for special programs, equipment, or buildings, contact Jennifer S. Young, Endowment Director, at 302-427-2100 x 19.

L'Chaim Circle ~ a new program of the Jewish Fund for the Future

Their generosity helped build the State of Israel, rescue and resettle millions of immigrants, and build a family of caring agencies that enrich our

lives in Delaware. Our entire community is indebted to them for their continued dedication to the survival of the Jewish people. We will recognize the commitment of L'Chaim Circle members on June 17, contact Gina at 302-427-2100 x20 for information.



L'Chaim Circle

The **L'Chaim Circle** honors people for their long term commitment to the Jewish Federation of Delaware's annual campaign. The members listed below have supported the annual campaign for **fifty years or more**.

Rosalie and S. Bernard Ableman	Doris S. Heisler	Claire and Byron Samonisky
Janice B. Antinoph	Dr. and Mrs. Leonard Hershon	Helen and N. Norman Schutzman
Dr. and Mrs. Joseph M. Barsky, Jr.	Hon. & Mrs. Charles K. Keil	Dr. and Mrs. Leo Sherman
Dr. Jack Barsha	Barbara and A. Louis Keil	Florence and Samuel Seidel
Alene and Gerald Berkowitz	Dr. and Mrs. Charles Klein	Ruth and Bernard Siegel
Sissy Berlin	Syd and Arnold Kneitel	Edith First Sklut
Elsie J. Blum	Leah Z. Kraft	Millie and Lewis Stat
Lillian K. Boys	Constance S. Kreshtool	Betty and Louis Strauss
Doris and David Braunstein	Carolyn and Donald Kreston	Sylvia Strauss
Dr. Oscar Bregman	Pearl Kristol	Beatrice and Charles Twer
Ann G. Breslow	Mrs. Joseph Laiken	Gladys and George J. Weiner
Molca Plum Budin	Marilyn and David Levitsky	Dr. and Mrs. Leonard G. Weinstein
Doris and Stanley Budner	Dr. and Mrs. Leon Levy	Dr. and Mrs. Howard Wilk
Cora Carlis	Rosalyn and A. Roke Lieberman	Barbara E. Yalisove
Yetta Chaiken	Nanette Lipstein	Tanya Zallea
Phyllis K. Cobin	Muriel and Gilbert Mann	Sybil ZefTel
Mildred and Herman Cohen	Edythe Margolin	Dr. and Mrs. Joseph Zimmerman
Lenora S. Cohen and Milton Cohen	Eleanor B. Matas	Libby and George Zurkow
Thelma and Louis Deitcher	Clara and Ted Mattes	Gladys and Harry David Zutz
Judith C. Director	Judy Melman (Mrs. George J.)	
Dr. and Mrs. Marvin Dorph	Doris and Joseph Miller	
Alice and Bennett Epstein	Hazel and Philip Pollack	
Dorothy and Louis Finger	Charlotte and George Preston	
Leona and Fred Gamiel	Dr. Harold Rafal	
Helen and Albert Goldberg	Edythe L. Rapkin	
Alene and Robert Groll	Dr. and Mrs. David Rich	
Netty and Stan Hart	Elaine Rosenberg	
	Janet and Robert Saltzman	

The following members of the L'Chaim Circle have consistently contributed to the Jewish Federation of Delaware's annual campaign for 25-49 years.

Frances B. Aeronson	Muriel E. Gilman	Phyllis and Irving Levitt	Dr. and Mrs. Alan Simkins
Harriet and Gerald Ansul	Dr. and Mrs. Edwin Goldberg	Dr. and Mrs. Leon Levy	Arlene Simon
Glady's and Morris Ariff	Faith and Michael Goldman	Dana and Roger Levy	Arlene and Richard Sklut
Barbara and Marvin Balick	Mark H. Goldman	Milka and Maurice Liebesman	Sonia and Gilbert Sloan
Hon. Helen S. Balick and Hon. Bernard Balick	Faye E. Goldstein	Miriam B. Lieblein	Dr. and Mrs. Jack P. Sokoloff
Bernard Bank	Dr. and Mrs. Maurice Goleburn	Gila and Joel Lipman	Marcia and Dennis Spivack
Jacqueline and Mason Berger	Maura and Edwin Golin	Janet and Sam London	Mara and Ira Tartack
Diane and Philip Berger	Helen and Mendel Gordon	Joan and Herbert Lubitz	Gloria Taub
Elsie Blum	Joan and Allen Greenberg	Rhonda and Paula Lukoff	Bernice and Ralph Tomases
Rona and Jerry Brenner	Debbie and Jerome Grossman	Shelly and Martin Mand	Bobbie and Norman Tomases
Faith and Louis Brown	Naomi and Robert Hershkowitz	Thelma and Samuel Mandelberg	Sandye and Gerald Turnauer
Betty Chambers	Beverly and Howard Hoffman	Dr. and Mrs. William Markell	Dr. and Mrs. Harold Ufberg
Honey and Irving Chernekoff	Gloria and Jacob Hoffman	Harold E. May	Dr. Richard and Hon. Karen Venezky
Susan and Malcolm Cobin	Anita and Sheldon Isakoff	Judith F. Melman	Sheila and Philip Weinberg
Elaine and Robert L. Cohen	Francina Isakoff	Ellen S. Meyer	Toby R. Weiner
Eileen T. Conner	Hon. and Mrs. Jack Jacobs	Anne and Fred Miller	Cindy and Robert Weiner
Dr. and Mrs. Israel A. David	Dr. and Mrs. Edward E. Jaffe	Dr. and Mrs. Arthur Z. Moss	Ruth and Sheldon Weinstein
Mary and Frederick DeVries	Cheryl and Ken Kamm	Lillian Nadell	Gloria Weiss-Brown
Dr. and Mrs. Steven Dombchik	Lieba T. Kaplan	Marian and Howard Palley	Charlotte Wormser
Leonard Dukart	Dr. and Mrs. Howard J. Kattler	Lola and Sidney Pell	Toni and Stuart B. Young
Ellin and Leonard Dwares	Barbara and Manfred Katz	Drs. David and Ethel Platt	Charlotte and Jerome Zaback
Micki and Lanny Edelson	Jo and Alfred Kessler	Rosalie and Peter Popper	
Irwin Engelson	Beatrice and Melvin Kohan	Rose Z. Reitzes	
Barbara and Irving Esbitt	Shelly and Howard Kristol	Marilyn and David Rosenberg	
Miriam and George Feldman	Harriet Kruger	Harvey B. Rubenstein	
Rona G. Finkelstein	Lila and Jerome Kurtz	Harriet and Marvin Sachs	
Anne Z. Freedman	Joseph Labovsky	Barbara and Alan Schoenberg	
Elaine and Ralph Friedberg	Susan and Russell Labowitz	Roberta Schwartz	
Fay and Saul Galperin	Reva M. Leader	Dr. and Mrs. Charles Shambelan	
Ruth and Henry Galperin	Andrea and Richard Levine	Dr. and Mrs. Leo F. Sherman	
	Sally and Robert Levine	Paula and Carol Shulak	

If an error or omission has been made in our listing, please inform Gina Kozicki, Endowment Administrative Assistant, so we may correct our records.

COMING ATTRACTIONS

ATTENTION KNITTING NOVICES AND EXPERTS

Knit-Knacks is a new group for knitting novices and experts sponsored by Jewish Family Service. The group begins on Wednesday, June 2, 2004, from 10:30 a.m. to Noon at agency offices at 101 Garden of Eden Road in Wilmington. All Knit-Knack creations (blankets, scarves, hats, mittens, baby caps, booties, etc.) will be given to individual families as well as local organizations serving families in need. Space is limited; call now to reserve your space! Contact Sue Bank at 478-9411, ext. 12.

SEASIDE FAMILY NEEDS COMMUNITY SUPPORT

The Community Service Committee of the Seaside Jewish Community Center is seeking contributions of food for a mother and her 2 sons (10 and 14) to tide them over until she receives her next food stamps. She has a microwave and hot plates to warm food. If you live in or are planning to visit the Rehoboth area please bring items to the Center at the Ocean Wave Lodge on Holland Glade Road which runs along side of Outlet Mall 3 (behind the Mikasa Outlet). Member Sue Gross will deliver them.

LEARN THE ART OF BABYSITTING

The Jewish Community Center Newark has scheduled a Babysitter's Training course, hosted by the American Red Cross, for 11 to 15 year olds. The course will be held Sunday, June 13th, from 9:00 a.m. to 4:00 p.m. This six hour program includes lunch. It will give participants the knowledge, skills and confidence to care for infants through school age children. Students will receive a babysitter's handbook and a Red Cross card. A special backpack and kit can be purchased separately that day for an additional \$18. Registration for JCC members is \$68, non-members are \$75. Seats are limited. Please call

(302)368-9173 to make a reservation by June 10th.

The JCC Newark is located off I-95 on Route 896 going north, on the corner of West Park Place and South College Avenue.

Washington is the place to be for Savvy, Intelligent Philanthropic Jewish Women!

Join with

*Senator Hillary Rodham Clinton (D-NY)

*Ambassador Richard Holbrooke, Former Assistant Secretary of State for European and Canadian Affairs

*Gerda Klein, Academy Award Winner, Founder, The Gerda and Kurt Klein Foundation

*Ann F. Lewis, Former White House Communications Director

*Dr. Deborah Lipstadt, Dorot Professor of Modern Jewish and Holocaust Studies at Emory University

*Congresswoman Nita M. Lowey, (D-NY)

*Senator Barbara Mikulski (D-MD)

*Rabbi David Saperstein, Director and Counsel, Religious Action Center of Reform Judaism

*Marie Wilson, Executive Director of the Ms. Foundation and Author of Closing the Leadership Gap: Why Women Can and Must Help Run the World

The International Lion of Judah Conference is October 17-19, 2004 in Washington DC - Conference registration is \$525 before Sept. 3 and \$575 thereafter. Registration includes meals and all programming. The hotel room rate is \$179 per room, per night single or double occupancy. Contact Jennifer Young, Endowment & Women's Philanthropy Director at jennifer.young@shalomdel.org for an invitation. Minimum gift: \$5,000 to the Jewish Federation of Delaware Annual Campaign.

JEWISH WAR VETERANS HOSTS ANNUAL CONVENTION

Delaware veterans, patrons and widows are invited to the Double Tree Hotel in Wilmington on May 23rd for the annual convention of the Jewish War Veterans of the United States, Department of Delaware. During a special luncheon program, Arthur Samuelsohn will step down as Commander and

a new slate of officers will be installed.

Incoming Officers are:

Myron Golins-Department Commander

Milt Slovin-Senior Vice Commander

Les Markovitz-Junior Vice Commander

Stu Hendler-Quartermaster

Jerry Krim-Adjutant

Rabbi Sanford Dresin-Chaplain

Membership in JWV is vital in supporting the veterans in the Veterans Hospitals and in establishing a Veterans Home in Delaware. Members visit the ill in area hospitals and collect food, clothing and other items that bring hope to all in need. For additional information about the organization or the May 23rd convention, please call 302-762-6086.

WHAT'S HAPPENING AT ALBERT EINSTEIN ACADEMY

www.aeacademy.org

Albert Einstein Academy has many exciting events coming soon. Please call for more information about the following programs:

Einstein Family Camping Trip,

May 20-21, 2004

Special Friends Day, May 24, 2004

Annual Egg Drop, June 8, 2004

Graduation, June 9, 2004 - 7:00 pm

Adas Kodesch Shel Emeth Synagogue

Call 302-478-5026 for more information.

Jewish Historical Society of Delaware, 505 Market Street Y, Wilmington, DE 19801, 302 655-6232, www.hsd.org/jhsd.htm jhsdel@yahoo.com

Annual Meeting, June 1, 2004, 7:30 p.m.

Jewish Community Center, 101 Garden of Eden Road, Wilmington, Delaware 19803

Hear about our exciting exhibit "Half a Chance: Stories of Jewish Delawareans" at the Delaware History Museum, September - December 2004

Our meeting room is the Youth Lounge, second floor.

We regret that the room is not handicapped accessible.

"One People - One Heart" at AKSE



Come to Café Tamar on Monday, May 31, 2004 at 6:30 p.m. at Adas Kodesch Shel Emeth (AKSE). In support of Israel, the title of this year's program is "Am Echad - Lev Echad," "One People - One Heart." The program features the AKSE choral and dance groups.

The Choral Group, directed by Cantor Joel Kessler, will include soloists Cantor Joel, David Drowos, Cindy Goldstein, Beth Lattin, Irene Plotzker, Benjamin Russell, Bob Weiner, Hailey Weiner, and a duet by Marc and Susan Pevar. The children's choir, *Shir Chadash*, will be entertaining as well.

New to the program this year

will be *A-Kids*, the children's dance troupe. *Harokdim*, the teenage dancers, and *Lanetzach Tz'irim*, our adult dancers, will perform exciting Israeli dances in costume.

Davis Gesterak will entertain on accordion and accompany the choir on the keyboard. Bob Weiner will play the guitar.

Tickets are on sale at the synagogue office and from the performers. Adults: \$10.00; Children (under 13): \$5.00. Refreshments are included.

Don't miss this outstanding event in the Jewish community. Be one with Israel at AKSE on Monday evening, May 31 at Café Tamar!

CLASSIFIEDS

Call Sid, 427-2100, Ext. 24

We now accept major charge cards

It pays to advertise in the classified section

TRUE

PEST CONTROL, INC.



"Guarding Your Environment" Since 1981

Bruce C. York
Reg. Envir. Health Specialist
Owner/Graduate Biologist/Certified

Work: (302) 834-0867
Fax (302) 834-7042
Middletown, DE



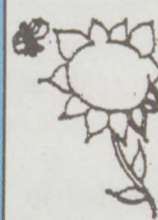
THE SPEECH CLINIC, INC.
Building Better Communication Skills

SPEECH-LANGUAGE THERAPY

The Speech Clinic, Inc. is now in its 18th year of serving the community. Services are provided to children and adults; after school and evening hours are offered for your convenience.

During the present school year, we will again be sending therapists right to participating private schools.

5147 West Woodmill Dr., Suite 21
Wilmington, DE 19808 • (302) 999-0702



JOY Cleaners LTD

We Specialize In : Expert Alteration • Storage
Suedes • Formals • Wedding Gowns

DRAPERIES CLEANED
By New Fold & Pleat Method
- ON PREMISE

FREE PICK-UP AND DELIVERY

656-3537

301 Greenhill Av. WILMINGTON (4th & Greenhill)

In By 11am - Out By 4pm
Same Day Service

Plan Now For the Best of Times

Big Al Entertainment

- ★ Bar/Bat Mitzvah Simchas
- ★ Sophisticated Simcha Motivators
- ★ Karaoke
- ★ Awesome Party Favors
- ★ Nightclub Light Show
- ★ Eye-Opening Game Prizes
- ★ Lighted Dance Stage
- ★ Band Rentals
- ★ and More...

PRESENTS THE

Party Patrol

DJ's, MC's and Dancers

Let us create a Bar/Bat Mitzvah simcha with "Sophistication and Funk."

TOTAL interaction—your guests will never want to sit down, especially the kids. Big Al creates HIGH-END DJ ENTERTAINMENT with requested music to satisfy every generation.



Call Toll Free 866-244-2535
www.bigaldj.com

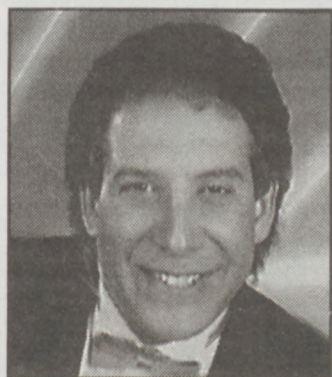
classic vintage cocktail music...

philip berger music

- social or business functions
- fund-raisers
- celebrations

1.302.427.2251
wilmington, de

The Perfect Mix



EDDIE DAVIS ORCHESTRA

SUPERB VOCALS,
DYNAMIC HORNS,
HOT RHYTHM SECTION

BALA EXECUTIVE COMMONS
11 BALA AVENUE
BALA CYNWYD, PA 19004
610-664-8553
www.eddiedavismusic.com



Crystal Ballroom

CRYSTAL BALLROOM

Three beautiful ballrooms to accommodate up to 300 people. The Crystal Wedding includes: five-hour wedding reception, top-drawer open bar, champagne toast for all, buffet or seated dinner including hors d'oeuvres,



china and silver table settings, candelabra for the head table, wedding cake, and color-coordinated table linens. Affordable elegance for an event long remembered. ... The Perfect Place to celebrate Bar and Bat Mitzvahs and all other simchas. Crystal Ballroom, 738 Philadelphia Pike, Wilmington, DE 19809.

(302) 764-7240

504

DAVID ZEIDMAN ENTERTAINMENT, INC.

from the most elegant to casual affairs...

over 18 years experience as DJ/EMCEE at Bar / Bat Mitzvahs, Weddings, Corporate/Social Galas, Camps, Children's Parties

Personalized Service Packages include:

- DJ/EMCEES • PRIZES & PROPS
- DANCERS • LIGHTING EFFECTS • VIDEOTAPING
- MAGICIANS • CLOWNS
- POLAROID WITH CUT-OUT CELEBRITIES • FACE PAINTERS • BALLOONS
- JUGGLERS
- CARICATURISTS • PSYCHICS
- KARAOKE • SPORTS GAMES
- COSTUMED CHARACTERS
- and much more...

COMPLETE EVENT SOURCE
610-527-2833
FAX: 610-527-2875
emcdaz@aol.com

★★★★★★★★★★★★



Casablanca Moroccan Restaurant

An Exotic Evening of Traditional Moroccan Cuisine & Entertainment

Female Belly Dancers- Every Friday, Saturday, And Sunday Night
Male Belly Dancers- 1st & 3rd Saturday of Every Month

\$30⁰⁰ OFF
Party of Four or More
with this coupon only

4010 DUPONT HIGHWAY,
NEW CASTLE
Expires 6/14/04
Not valid with other offers or on holidays



Visit
Ali Baba
175 East Main St.
Newark, DE
(302) 738-1111

7-Course Nightly Dinners & Vegetarian Dinners
Reservations Suggested • Banquet Room • Open Daily 5:30PM-11:30PM
4010 Dupont Highway • New Castle • 652-5344
06/01/01 R80547 www.thecasablancarestaurant.com

Featuring
ISRAELI and MIDDLE EASTERN FOOD
at ALI BABA in Newark, DE