

The JEWISH VOICE

"You heard it in
The Jewish Voice"

PUBLISHED BY THE JEWISH FEDERATION OF DELAWARE 101 Garden of Eden Rd., Wilmington, Delaware 19803

Vol. 17, No. 11

January 27, 1984

Shevat 23, 5744

16 Pages

UNESCO: Bold U.S. Move Does Not Go Unnoticed

By BORIS SMOLAR
(Editor-in-chief emeritus, JTA)
Copyright 1984 JTA, Inc.)

The UNESCO Case

The assertive step made by the U.S. government in formally announcing its withdrawal by the end of this year from UNESCO — United Nations Educational, Scientific and Cultural Organization — may open new avenues of thought among many of the member-states which comprise the United Nations. UNESCO has during the last years become a conspicuous instrument in the cold war conducted in the UN against the United States and against Israel. A year's notice of withdrawal is required in the UN system.

Leading American Jewish organizations, as well as non-Jewish groups in the country — including a group of prestigious scholars professionally concerned with international affairs — have long been demanding a readjustment of the U.S. policy with regard to the UN. The latter group, which has among its members former American delegates to the UN, submitted a 15-page memorandum to the State Department, and to the Senate and House committees dealing with international relations, urging a "redefinition" of the U.S. relationship to the United Nations. The document showed that the United Nations is now a captive body of the Soviet and Arab blocs and of the Third World states. It enumerated many grievances against the UN, including the fact that the world body is insensitive to legitimate U.S. national interests and that it is adopting one-sided resolutions against Israel. It is one of the most important specialized UN agencies with a staff of more than 2,700 employees and a total budget of about \$400 million a year, toward which the U.S. is contributing 25 percent — the largest contribution of all the member-states.

Gone are the years when UNESCO firmly committed its member-states to support human rights. It is now advocating a policy of "collective rights" that takes priority over "individual rights." In simple language — a Soviet-style policy of denying human rights to individuals.

(Continued to Page 8)

Super Sunday A Success

JFD Campaign At \$536,650 Toward 1984 Goal



The results keep pouring in on Super Sunday! Francisa Isakoff, Women's Division president (L) hands pledge cards to Paula Lehrer, Super Sunday co-chairman.

Federation's Super Sunday IV was a day of commitment, excitement, and fun, reported Paula Lehrer and Steve Herrmann, co-chairmen.

A record breaking total of \$94,450 was raised on Sunday, Jan. 15 toward a division goal of \$125,000. The dynamic co-chairmen commented, "It was really a community team effort of over 125 dedicated men and women who joined together at the Bank of Delaware downtown to make over 1,500 individual calls to members of the Delaware Jewish community. They made it happen! A 22% increase was achieved over 1983 and it was particularly gratifying that many of those called made a commitment for the first time. Super Sunday is not only a major fund raising effort but it provided the opportunity to make the community sensitive and aware as to how their dollars are being translated into meeting critical human service needs both here in our own community, and in Israel.

Special commendation was made to the leadership of our local Jewish agencies, synagogues and community organizations who provided the "manpower" for the day. (See Honor Roll of workers in this issue.)

David Singer, general chairman, extended his special thanks to the Bank of Delaware for graciously making their facilities available for the day, and to John Goodier, bank director of communications, for his outstanding cooperation.

David J. Singer, general chairman, and Francisa Isakoff, president of the JFD Women's Division, reported that the '84 campaign is "right on target" with all men's and women's divisions activities now in place. Hundreds of volunteer workers will be approaching their prospects in the next two to three weeks in order to reach the 3,000 Jewish families in the community.

(Continued to Page 5)

Israel's West Bank

By ROBERT M. MORGENTHAU
(Reprinted from *The New York Times*)

The much-touted rapprochement between America and Israel notwithstanding, there is one bone of contention that appears to defy resolution: disposition of the West Bank. The Administration seems to believe that Israeli control over the area will make Arab antagonism irreversible. And many of Israel's would-be friends maintain that unless the West Bank is relinquished, Israel will lose its Jewish identity in the flood of a rapidly growing Arab population and will have to resort to ever more repressive measures against the Arab inhabitants, making endless violence inevitable.

In the heat of the debate, a few facts are ignored.

First, there is no one to talk with about the West Bank. Israel has repeatedly called for negotiations, stipulated in the Camp David agreement. Jordan, after hinting, promising and teasing, has refused to join. Palestinian Arab leaders, fearful after assassinations by the Palestine Liberation Organization, shy away. Egypt has shown no interest in West Bank negotiations since 1980.

Second, Israel cannot relinquish military control of the West Bank. Both the governing coalition and the Labor opposition believe that military control of the area is vital. The reasons could not be plainer. The "confrontation states" on Israel's eastern front are arming feverishly. By 1986, they will have a staggering number of sophisticated weapons, including 10,000 tanks. (That's about the number the Atlantic alliance has for the defense of Europe.) To suggest that Israel withdraw from the only barrier between these hostile armies and the 10-mile-wide coastal strip that contains 80 percent of Israel's population and 66 percent of its industry is to recommend suicide.

Third, it is illogical to claim that the settlements are "an obstacle to peace." Only the prospect of an irreversible, complete Israeli takeover of the entire West Bank can serve as an incentive for the Arabs to negotiate. If the settlements are frozen, the Arabs will have nothing to lose by waiting.

Fourth, the "demographic danger" is a canard. There is no danger that Israel will be engulfed by a fast growing Arab population. The West Bank has been under Israeli control since 1967. Since then, the ratio of Jews to Arabs west of the Jordan River — in Gaza, the West Bank and pre-1967 Israel — has remained exactly the same: 65 percent Jews, 35 percent Arabs. (Without Gaza, it is 71-29.) All projections point to a similar ratio in the future.

Fifth, Palestinian Arabs already have a state. All Arab leaders, including King Hussein and Yasir Arafat, have repeatedly declared that Palestinians and Jordanians are one nation. The inevitable conclusion is that a Palestinian-Arab state exists: It is called Jordan and it comprises 80 percent of the area of Palestine as defined by the League of Nations (the only existing political definition of Palestine). It is therefore difficult to see the need for a second Palestinian-Arab state in the 40-by-50-mile area known as the West Bank.

Sixth, Israel's right to Judea and Samaria and to the coastal plain is indisputable. Israel's legal claim is based on the League of Nations Mandate, which stipulated Jewish settlement and a Jewish National Home in all of Palestine. It is based, too, on the historic, religious and cultural Jewish ties to the land, on the 3,000 years of uninterrupted Jewish presence, on the fact that only the Jews have ever

(Continued to Page 5)

Table of Contents

Federation News	pgs. 2,3,5
Editorial Page	p.4
Columnists	p.6
Hillel News	p.7
Gratz News	p.7
Dateline	p.8
JCC Page	p.9
Kutz Home News	p.10
People in the News	p.11
Albert Einstein Academy	p.11
School News	p.12
Classified Ads	p.12
Dear Rachel	p.13
Jewish Family Service	p.13
Obituaries	p.14
Organizations in the News	p.15

New JFD Appointment

Ted Zutz has just been appointed to serve as co-chairman of the \$1,000-2,499 Men's Division. The appointment of Bennett Epstein, who will be co-chairing the division with Zutz, was announced in the last issue of *The Voice*.



Ted Zutz

AIPAC To Hold Workshop On Politics

On Sunday, Feb. 5, the American Israel Public Affairs Committee (AIPAC) will sponsor a one-day workshop on politics for Eastern Pennsylvania and Delaware.

AIPAC is the only American Jewish organization registered to lobby Congress on legislation affecting Israel. Headquartered in Washington, D.C., AIPAC is the nationwide American organization which, for over 25 years, has worked to strengthen U.S.-Israel relations. It is the organization which spearheaded the effort to defeat the sale of sophisticated American weaponry to hostile Arab regimes and which helps to protect and defend foreign aid requests to Israel of over \$2.5 billion annually.

The AIPAC workshop will be held at the Bellevue Stratford Hotel in Philadelphia from 10 a.m. until 4 p.m. Leading Pennsylvania and

Delaware politicians have been invited to participate in the workshop. Thomas A. Dine, executive director of AIPAC, will give the luncheon address.

The fee for the workshop, including lunch and all conference materials is \$30 per person and \$15 for students. Registration is limited to 300 persons. Registration may be sent to:

AIPAC Workshop
444 North Capitol Street N.W.
Washington, D.C. 20001

Please call the Jewish Federation of Delaware office, 478-6200 if you plan to attend.

It is important that Jewish activists from all parts of both states be represented at the workshop as it will provide information and leadership training which participants can transmit to other members of our community.

Kutz Foundation Announces Date For Scholarship Applications

Alfred Green, Chairman of the Milton and Hattie Kutz Foundation Board, has announced that applications are now being accepted from June, 1984 high school graduates for undergraduate scholarships to be awarded for entrance into universities in the fall of 1984. The deadline for submitting scholarship applications is **March 15, 1984**.

Applications can now be requested from Morris Lapidus, executive secretary of the Kutz Foundation at 101 Garden of Eden Road (19803).

Green indicated that the criteria for selection of scholarship recipients are based on a combination of financial need, high school grades and SAT scores. Scholarships are awarded for undergraduate work only and applicants are limited to those who graduate high school as of June, 1984. Based on satisfactory scholastic achievement, the scholarships are renewable for the balance of the student's undergraduate studies.

Would You Like A Pen Pal In Israel?

Have you even wanted to have an Israeli pen pal? An unmistakable link binds American and Israeli Jews, and a pen-pal friendship creates an ideal way for American Jews to learn about daily life in Israel and to cement even closer bonds.

Here in Delaware we already have close ties to a particular community — the Jesse Cohen Center in Holon. The Jesse Cohen neighborhood, our "twin-ned" Project Renewal community has 10,000 Jewish men, women and children — the same number of Jews as in the State of Delaware!

What exactly is Project Renewal?

Project Renewal What It Means

Project Renewal is a partnership between Israeli neighborhoods and communities throughout the world:

- To help rehabilitate buildings in need
- To enlarge public facilities
- To build new buildings
- To beautify the neighborhood
- To provide social services
- To train residents to be responsible for their own needs.
- To make the neighborhoods good and happy places in which to live and to raise families.
- To share the costs between Israel and the twinned communities.
- To reach out in friendship
- To reaffirm that we are indeed responsible for one another.

A pen pal program, for people of all ages from preschoolers to senior citizens, is a natural extension of an already close relationship. If you'd like to have a pen-pal in "our" community in Israel, call Beverly Peltz, 478-6860, who is coordinating this program.

Tuesday evening, February 21, 1984 at 7:30 p.m.
Wesley College, Room 206
Douglas Bloomfield,
Director of Legislation,
American Israel Political Action Committee
will speak to the public on:
**The U.S./Israel Relationship:
Current Status-Future Direction**

Potential Israeli pen pals...



Monday evening, January 30, 1984 at 8 p.m.
at the Jewish Community Center
Rep. Tom Carper will speak to the
community regarding his recent 10-day
Congressional mission to Israel, Egypt and Lebanon.

Super Sunday — Super Success



Larry Isakoff (L) talks with John Goodier from the Bank of Delaware



Hilda Geller



Marcia Shepard



Peter Popper



Paul Mudrick



Leslie Goldenberg



Bea and Harold Snyder



Joan Wachstein



Kay Fragner

SUPER SUNDAY HONOR ROLL

Ruth Balick	Alan Horowitz	Beverly Peltz
Arlene Bowman	Keiko Iacono	Solomon Peltz
Arnold Budin	Francia Isakoff	Peter Popper
Gail Budin	Larry Isakoff	Irene Plotzker
Dina Burt	Jack Jacobs	Richard Plotzker
Mark Caplan	Goldie Kagel	Ruth Rosenbaum
Frank Chaiken	Cynthia Kane	Carol Sue Rudnick
Lois Chalawsky	Deane Kattler	Mike Samuels
Fred Chalawsky	Howard Kattler	Seymour Sands
Rabbi Kenneth Cohen	Bob Kerbel	Joan Saks
Sharon Cohen	Sid Kessler	Sue Shaffer
Gene Danneman	Arnold Kneitel	Marvin Shepard
Arlene Davis	Syd Kneitel	Marcia Shepard
Robert Davis	Connie Kreshtool	David J. Singer
Rhoda Dombchik	Millie Lapidus	Joanne Singer
Steve Dombchik	Morris Lapidus	Bea Snyder
Susan Dowdell	Irv Levitt	Harold Snyder
Steve Edell	Phyllis Levitt	Pat Spiegel
Dora Eisenstat	Marjory Stone Levine	Joan Spiegelman
Irv Engelson	Judy Levy	Judy Stiebel
Bennett Epstein	Denise Lieber	Daniel G. Thurman
Paul Fine	Arnold Lieberman	Marcie Tucker
Nisson A. Finkelstein	Nan Lipstein	Ceci Uberg
Rona Finkelstein	Len Lipstein	Karen Venezky
Kay Fragner	Evelyn Lobel	Joan Wachstein
Bob Frankel	David Lowenstein	Lisa Wachstein
Jack Frankfurt	Martin Lubaroff	Lynn Wachstein
Elaine Friedberg	Ken Markiewitz	M.B. Wachstein
Ralph Friedberg	Leona Markiewitz	Toby Weiner
Hilda Geller	Rose Magel	Ruth Weinstein
Jane Goldberg	Margaret H. May	Sheldon Weinstein
Helen Goldberg	David Mellen	Helen Wenzler
Steve Goldberg	Ellen Myer	Sam Wenzler
Leslie Goldenberg	Karen Moss	Harriet Wolfson
Ada Golden	Paul Mudrick	Sybil Zeftel
Helaine Gordon	Stuart Nemser	Leo Zeftel
Al Green	Sidney Pell	David Zinman
Rabbi Peter Grumbacher		Ruth Zinman
Avrene B. Hall		Sam Zuckerkandel
Gil Happert		Martin Zukoff

Steven Herrmann Paula Lehrer
Co-Chairmen

We apologize for any inadvertent omissions.



Michael Samuels



Howard Kattler



Jack Frankfurt

Editorial

Assad's Monstrous Tools Of Torture

Reprinted from
The Sunday Times

PRESIDENT ASSAD of Syria has kept his grip on power by allowing systematic violations of human rights and some of the most grotesque practices ever perpetrated by a government on its own citizens. Investigations for Amnesty International have completed a chillingly detailed report on the horrors experienced by thousands of Syrians.

No instrument symbolises Assad's regime more malignantly than the *dullub* (the wheel). This is a car type suspended from the ceiling. The prisoner's body is forced-through it and his hands are tied behind his back, so that he is bent double, facing the floor. Victims described their experience to Amnesty investigators:

•A student from Aleppo: "They put me in the *dullub*. They beat my legs until I passed out. I could not walk. On the second day they tied my feet and hung me upside down from a tree for about two hours. One beat me all over my body, my head and my legs with a braided copper cable until I passed out."

•Another Aleppo student: I was put in the *dullub* and for about 1½ hours they applied electricity at regular intervals to my toes...pulled my hair out, extinguished cigarettes on my body and whipped me on the face."

•A trader: "I was stripped naked. I was put in the *dullub* and beaten with whips on my back and all over my body."

•A Damascus accountant: "They handcuffed and blindfolded me and took me to an underground cell where I was severely tortured. This included the application of electric current, being put in the *dullub* and beaten with braided electric cable."

Amnesty lists 23 methods of torture used on political prisoners in Syria. Some are bizarre in the extreme.

Bisat al-Rih, or flying carpet, is a piece of wood shaped to the human body. The victim is strapped to this before being beaten or tortured with electricity.

Al-Shabah, or the phantom, entails tying the victim's arms behind the back and suspending him by them. But the most unspeakable contraption is *Al-Abd al-Aswad*, or black slave.

One Aleppo student described his treatment. "The torture room is square and is situated inside another room which is sound-proofed... In it there are two tables for the interrogators and a bed beneath which the torture tools are kept. The clothes of the victim are put on the bed as, whenever a person is tortured, he is ordered to strip naked.

"Inside the room there is an electric apparatus, a Russian tool for ripping out fingernails, pincers and scissors for plucking flesh and an apparatus called *Al-Abd al-Aswad* on which they force the torture victim to sit. When it is switched on, a very hot and sharp metal skewer enters the rear, burning its way until it reaches the intestines, then returns only to be reinserted."

Syria has declined to respond to the Amnesty findings, despite messages to Assad. Nor have Amnesty officials been given permission to visit Damascus.

Many human-rights violations have been directed at members or suspected sympathisers of the Muslim Brotherhood, a fundamentalist Sunni sect opposed to Assad. Amnesty has also received the names of several thousand people supporting various organizations or parties, legal or banned, who are arrested and detained. They include wives and children under 10, held as "hostages".

Amnesty has also been told of an increasing number of "extrajudicial executions". It lists five cases in which 24 people were killed by special units in Jisr al-Shughur, between 600 and 1,000 inmates of Tadmur prison killed in their cells and dormitories: 22 men killed during interrogation in Sarmada: 80 people gunned down in Aleppo: 123 lined up and shot in Hama.

These are followed by an unusually shocking case. After Syrian soldiers raided a house in Hama last year, they were ambushed and killed by men of the Muslim Brotherhood. The government sealed off the city. Two weeks later, 70 people were executed outside the municipal hospital and others in another quarter. And cyanide gas containers were connected by rubber pipes to the entrances of buildings believed to contain insurgents, killing all the occupants.

LETTERS to the Editor

Dear Editor,

In the course of searching for my roots, which go back, at a certain stage, to Wilmington, Delaware, I came into contact with Rabbi David Geffen, who gave me a great deal of information about the Wilmington Jewish community.

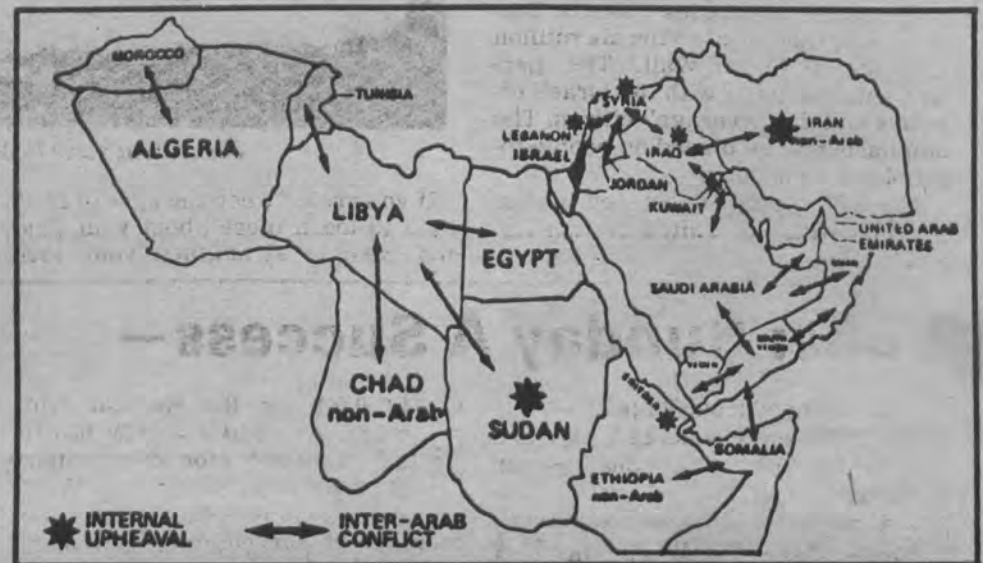
It is now clear to me that Meyer Meyers and Nathan Lieberman were my two great-grandfathers on my father's side. My grandparents on my father's side, Daniel Webster Meyers and Ida Lieberman, were married in Wilmington but later moved to Philadelphia and then to Haddonfield, N.J.

I have copies of the book and brochure about Delaware Jewry, published in 1976, but I would like to have further information, particularly in regard to the children of Meyer Meyers and Nathan Lieberman.

I myself am from Los Angeles, where my father moved soon after the first World War, and have lived in Israel for almost 33 years.

Thanking you in advance for your help, I remain.

Sincerely yours,
Nechemia Meyers
Head, Public Affairs Office
The Weizmann
Institute of Science
P.O. Box 26
76100 Rehovot, ISRAEL



Arabs Massacre Arabs

For many weeks after Israel entered Lebanon in June 1982, Western media carried blaring headlines reporting outlandishly inflated statistics of death and destruction at Israel's hands.

After the dust settled, it became clear that the outrageous figures the media used were PLO propaganda creations bearing no resemblance to reality. To be sure there was death and there were casualties. But not "tens of thousands", as some reports had it.

Although ready to excoriate Israel for deaths real and imagined, there has been only scant media attention, where there has been any attention at all, to the widespread slaughter of Arabs by Arabs!

•The "An Nahar Arab Report and Memo" of July 26, 1982, reports, "Ayatollah Khomeini's decision to launch a full-scale invasion of Iraq..." and Iraq's responses against Iran, "has claimed an estimated 90,000

(Continued to Page 12)

The Jewish Voice

Published semi-monthly, and monthly in July and August, by the Jewish Federation of Delaware.

Editorial opinions expressed in this newspaper are those of the newspaper and not those of any individual. Signed editorials do not necessarily represent the view of the newspaper but rather express the view of the writer.

Jewish Federation of Delaware, 101 Garden of Eden Road
Wilmington, De. 19803

Subscription Price: \$5.00

Circulation 3,000

Mailed to subscribers who are contributors to
Jewish Federation of Delaware
Second Class Postage paid at Wilm., Del.

KAREN G. MOSS, EDITOR

Editorial Committee: Yetta Chaiken, chairman; Nisson Finkelstein, William Frank, Beverly Hindin, Ann Jaffe, Leonard Lipstein, Simon Steinberg.

Administrative Committee: Yetta Chaiken, chairman; Sam Berman, Dr. Steven Edell, Irving Kaufman, Irving Levitt, Ann Marcus, Mark Schlam, Charles Twer.

Morris Lapidus, Executive Vice President

Yetta Chaiken, Newspaper Chairman

No material will be accepted by The Jewish Voice which is considered against the best interests of the Jewish community.



THE JEWISH VOICE (USPS-704160)

Second class postage paid at Wilmington, De. Published semi-monthly, and monthly in July and August, by the Jewish Federation of Delaware, 101 Garden of Eden Rd., Wilmington, De., 19803. Subscription price \$5.00. Mailed to subscribers who are contributors to the Jewish Federation of Delaware. POSTMASTER: Send address changes to The Jewish Voice, 101 Garden of Eden Rd., Wilmington, De. 19803.

DEADLINE

The next issue of The Jewish Voice will be published FRIDAY, FEBRUARY 10. The deadline for stories and photos is noon, WEDNESDAY, FEBRUARY 1. Material should be sent or brought to the Jewish Voice office at the Jewish Federation of Delaware, 101 Garden of Eden Rd., Wilmington, 19803. All articles must be typed, double spaced.

Delaware Young Leaders Plan Fall Trip to Israel

An enthusiastic group of young men and women are beginning to plan a Mission to Israel which will take place in the fall of 1984. Present plans call for a 10-day trip with a four day additional option leaving the U.S. on Oct. 21. The trip will include visiting historic and religious sights, visiting border and West Bank settlements, viewing the Dead Sea from Massada, meeting with archeologists and visiting the excavations of the Old City of Jerusalem. Plans call for visits to military installations, absorption centers and meeting with Moazia Segal, project director of the Jessie Cohen Center, Holon, as well as the citizens of our Project Renewal responsibility.

The mission includes visits to Yad Va Shem, memorial to the six million and the Western Wall. The participants will meet with top Israeli officials and the "average" citizen. The emphasis will be placed on people-to-people relationships.

The trip is being developed in conjunction with the United Jewish Appeal.



Jerusalem vista looking west from the Mount of Olives. WZPS photo by Shuki Kook.

If you are between the ages of 25-45, want to learn more about your past, and wish to strengthen your iden-

tification with the land of Israel and the Jewish people, call the Jewish Federation of Delaware at 478-6200.

Planning meetings will be held shortly to discuss the itinerary, program, purpose and other details.

Super Sunday A Success —

(Continued from Page 1)

David Singer commented, "We are now into the most crucial phase of our campaign. In order to reach our goal

Do You Know Any Newcomers?

If you know of any newcomers to the community, please give us a call. We'd like to send them our "Shalom" brochure, and to welcome them to town. Drop us a note with the name(s) or give us a call. Thanks.

Jewish Federation of Delaware
101 Garden of Eden Road
Wilmington, DE 19803
478-6200

of \$1,250,000 for the Regular campaign and an additional \$250,000 for Project Renewal (for our twinned community, Jesse Cohen in Holon, Israel) then it is critical that every member of our community respond with a maximum increased commitment when they are spoken to by a volunteer worker. The need for increased giving is not a myth — it is a reality. The future strength and viability of our local community and of Israel depends upon our response. Share the Vision — and let us continue to maintain our special posture as a caring Jewish community."

(A special thanks also to Ralph Jacobs of Bagels and Donuts and to Jerry Blum of Take-A-Break for donating the refreshments for the day. It helped to nourish our hard working volunteers!)

Israel's West Bank —

(Continued from Page 1)

had an independent sovereign state there and on the sacrifices they have made to redeem the land.

Seventh, West Bank Arabs have more civil rights than citizens of any Arab country. They have access to impartial courts and the right of *habeus corpus*. They enjoy freedom of the press, of movement and of peaceful assembly.

Israel has brought unprecedented prosperity to the West Bank. There are four Arab universities — none existed under Jordan. Medical care, life expectancy and the standard of living are all rapidly approaching Israel's levels.

Existing tensions and restrictions are rooted in the territory's transitional status. Once Israel's right to exist is affirmed, West Bank Arabs, like

their 700,000 brethren who are Israeli citizens, will have full civil and human rights and will live in peace with Israel.

What is lost amid the sensational headlines and passionate debate is that, despite occasional Arab violence and ugly incidents of Jewish vigilantism, 50,000 Jews and 750,000 Arabs in the West Bank live, work and trade in peace. There is a *modus vivendi* with Jordan, the bridges on the Jordan River are open, commerce flourishes and 150,000 visitors from Arab countries come every summer.

If the West Bank, rather than reverting to Arab rule, remains under Israel, its Arabs will live in a free democracy instead of an autocratic police state.

Robert M. Morgenthau is District Attorney of New York County.

A WASHINGTON EXPERIENCE

JOIN US...

A group of us from Delaware will be joining 2,000 Jewish men and women, age 25-45 from all over the United States, and WE'RE MAKING NEWS...

By meeting with members of Congress, high ranking White House, State Department, and Israeli Government Officials. IN WASHINGTON, D.C.

At the 4th National Young Leadership Conference, March 11-13, 1984.

SPONSORED BY:

Young Leadership/Young Women's Leadership Cabinets of the United Jewish Appeal.

YOUR CO-LEADERS WILL BE

Richard and Marjory Stone Levine.

TO LEARN, BE HEARD, AND ENJOY

Call the Jewish Federation of Delaware, 478-6200.

Illustration by Gerry Biller

Bob Weiner
Jewish Folk Singer
With or Without Guitar
Israeli
Yiddish
Chassidic
American
Folk Music
762-1029
658-8700



**Dependable
Shoe Repair**

Fairfax Shopping Center
Route 202 (Concord Pike)
652-6725

FRANKLY SPEAKING

Zev Amiti



Beth Emeth 'Mitzvah Chaverim' Reach Out On Christmas Day

Once more, for the eighth consecutive year, the Beth Emeth Mitzvah Chaverim went into action on Christmas Day, 1983, relieving a number of Christian employees in the Riverside Hospital, just up the road from Beth Emeth.

Led by Daniel Koffler, consulting engineer and architect who had been involved in the original planning for the design of the Riverside Hospital, about a dozen men and women from the Beth Emeth congregation, moved into the hospital early Christmas Day. They took over the duties of Christian employees who were thus able to enjoy their Christmas at home with families or go to worship in their respective churches without fear that patients in their hospital were being deprived of their regular services.

As far as I can learn, this Christmas Day *mitzvah* was started by a synagogue in Milwaukee back in 1971. Since then, scores of Jewish groups, particularly religious groups, latched onto the idea of helping Christian neighbors who work in hospitals and such places to observe Christmas Day while their Jewish friends and neighbors substitute for them.

All this really makes a lot of sense, if it is historically true that Christmas is about a Jewish boy, born in Bet Lechem, (otherwise known as Bethlehem) to a Jewish woman known as Mary.

As Dan Koffler told me, the group from Beth Emeth engaged in a wide variety of services at the hospital, such as folding linen, helping to prepare the food, loading and distributing the food trays; also feeding some of the patients.

They collected the dishes later and even washed them, in addition to performing a lot of the otherwise menial duties usually assigned to attendants.

The *chaverim* were quietly mobilized by notices in the Beth Emeth *Orbit* with the appeal sounded by Dan Koffler "in the true spirit of Brotherhood."

The basic aim of this particular project is truly elevated and ennobled because it is undertaken without much in the way of publicized fanfare but it is carried on in the true spirit of charity.

One may ask, "Why just on Christmas Day and not on Easter Sunday?"

The Jewish Voice welcomes Op-Ed articles written by community members. Contact Karen Moss, editor, for further information.

I don't know what the usual answer is to this question but I would hazard a guess that Easter Sunday has rarely been a good time for Jews, particularly in Eastern Europe and until recent years, in parts of the United States.

Easter Sunday, following Good Friday, was often marked by pogroms as anti-Semitic mobs roamed through Jewish sections, taking out their hatred upon Jews whom they dubbed "Christ killers."

But Christmas has traditionally been different. It is filled with a feeling of good will and peace, marked by a birth rather than a death in Christian history and theology.

It is a wonder why this Christmas *mitzvah* program has not been undertaken by other Jewish organizations in Wilmington. Perhaps it should be a community wide project.

WHAT'S HAPPENING

Kayla Gavish



Civil Rights: To Be Or Not To Be

I am very disappointed that I shall be out-of-town on Sunday, Jan. 29, when Rabbi Murray Saltzman speaks at Temple Beth Emeth. Rabbi Saltzman of Baltimore Hebrew Congregation is one of the members of the Civil Rights Commission who was fired by President Reagan when he sought to "pack" the Commission. Rabbi Saltzman had been appointed to the Commission by President Ford and had served for nine years with other distinguished citizens on this six-member panel.

I believe that the future of the Commission as an independent, fact-finding agency is very cloudy at best.

In Fall, 1982, President Reagan replaced two members of the Commission and in May, 1983, he proposed three new members to replace three sitting Commissioners. This was the first time a president had forceably removed a sitting commissioner.

From that time until late 1983 the civil rights community and a bipartisan group of senators and representatives worked to find a compromise acceptable to Congress and the White House that would insure the continuation of an independent Commission. The compromise included the reappointment of Mary Louise Smith and Jill Ruckelhaus, two Republican

"I have had a dream, past the wit of man to say what dream it was," wrote Shakespeare. "A man is but an ass if he goes about to expound a dream."

But dreams and their interpretation play an important part in our Bible, beginning with the dreams of the patriarchs in Genesis. Jacob dreamed of a ladder with angels ascending and descending, and there are many who interpret his later wrestling with an angel before his meeting with Esau as a dream sequence. Joseph's grandiose dreams of superiority over his brothers and parents lead to his being sold into slavery in Egypt. There, is the royal prison, it is his interpretation of the dreams of royal wine steward and baker that leads to release; and, finally, his interpretation of Pharaoh's dreams that brings him to power and ultimate reunion with family.

Dreams, then, are serious business in the Bible, as they were among all

women who had worked vigorously over the years to promote equality of opportunity for all Americans.

It was therefore a shock to the civil rights community to learn in early December that these two women were dropped from the list of appointees agreed upon in the compromise.

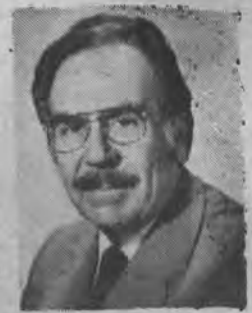
This week the newly-constituted Commission began its work. Already it looks as if the agenda will result in a slowing-down or reversing of the civil rights advances of the past few decades.

The Commission is mandated by Congress to be a fact-finding and data-gathering agency and to give advice to the Congress and the president. Yet in its first sessions the new Commission voted against quotas as a means of affirmative action and against mandatory busing to achieve desegregation without it appears much discussion, never mind fact-finding or data-gathering.

The Reagan Administration has not shown itself to be especially sensitive to issues affecting minorities and women to put it mildly. Will this Civil Rights Commission be only a "yes" body for the Reagan Administration's civil rights policies? I have my own assessment but I would like to hear what Rabbi Saltzman has to say.

ON THE OTHER HAND

N. Even-Or



Biblical And Talmudic Dreams

ancient peoples, a form of communication to man from on high, communication that can only be understood by those in whose hand God has placed this ability.

When we get to the Talmud, on the other hand, we find lively disagreement about the validity of dreams and dream interpretation. Some of the comments anticipate much of what Freud and his school discovered almost two millenia later. There is a particularly fascinating and delightful discussion in the ninth chapter of Tractate Berachot (Blessings) which I commend to you either in the original or Soncino translation.

Rabbi Hisda (3rd century, Babylonia) begins the discussion by saying that a dream which is not interpreted is like a letter which is not read; and he continues with the claim that a bad dream is better than a good one. (This, the commentators say, is because a bad dream incites one to repentance.) His exchange with Rabbi Joseph on the merits of good and bad dreams is interrupted by Rabbi Yohanan with a counter opinion: "Just as wheat cannot be without straw, so there cannot be a dream without some nonsense."

Referring to events in the Book of Daniel, Rabbi Samuel ben Nachmani concludes that a man is shown in a dream only what is suggested in his own thoughts, and Raba adds that this is proved by the fact that a man is never shown in a dream things that he would never think about, like "a date palm of gold, or an elephant going through the eye of a needle."

The power of suggestion and thought preoccupation on dreams is illustrated by two anecdotes in the text. One, of the Roman Emperor Trajan, tells of his challenging Rabbi Joshua to tell him what he, Trajan, would dream that night, Joshua told him, "You will see the Parthians making you do forced labor and despoiling you and making you feed unclean animals with a golden crook." The poor Emperor thought about this horrible vision all day and, of course, dreamed about it that night. Similarly, with King Shapor (3rd Century, Persia), Rabbi Samuel, challenged to predict a dream, told Shapor that he would dream of the Romans capturing him and making him grind date-stones in a golden mill, bringing about that very dream after a long day of worry about the event.

My favorite section on dreams in Tractate Berachot is that dealing with a rascal named Bar Hedyah, who appeared to make a business of interpreting dreams. Bar Hedyah had a simple guideline to his interpretations: if he was paid, it was a good interpretation full of favorable results; if not paid, the picture was bleak for the inquirer. For example, Abaye and Raba had the same dream of reading a verse from Deuteronomy, "Thine ox

(Continued to Page 8)

What Is Hillel?



Manny Panar



Rabbi Bob Gluck

B'nai B'rith Hillel is the Jewish presence at the University of Delaware. It is a place where Jewish students from all over campus get together as a community for religious, educational and social activities. It is a place where friendships are formed and Jewish fulfillment is realized.

Through our programming, Jewish awareness on campus is growing in leaps and bounds. 1983 proved to be one of the most exciting years in our history. With over 250 members, an extensive calendar, the support and encouragement of university Jewish faculty members and an enthusiastic board and staff to help operate the organization, Hillel is clearly flourishing.

With a continuation of our progress and expansion in 1984 the vitality of Jewish life on the university campus is sure to increase. Spring semester at the University brings with it a whole new calendar for Hillel, with a variety of activities and an increased number of events featuring several stimulating speakers.

As always, Hillel will sponsor lox and bagel brunches and coffee houses, with featured topics including "Jewish Men and Women: Inter-marriage and Inter-dating" and "Jewish Identity." A highlight of the semester will be a trip to Atlantic City in March, open to all University students. We will also hold Shabbat dinners and Pesach seders.

Naturally, the task of providing the focus of the Jewish community is costly. B'nai B'rith Hillel's funding which comes in part from the Jewish Federation of Delaware and from the efforts of students goes a long way. But in expanding the program in hopes of increasing Jewish awareness on campus, the amount of funding necessary also increases.

Meeting the challenge of the marked growth in the university's Jewish population presents a challenge to Hillel. The need is great for an expanded staff and facilities of Hillel's own, a need that can only be met by you, the Jewish community of Delaware.

Your support of Hillel helps guarantee continuity of the Jewish people from one generation to the next.

An Orphan In History

By LINDA G. FLISS

Congregation Beth Sholom of Dover, has been presented with a grant from the Delaware Humanities Forum to fund a community-wide symposium entitled "An Orphan in History." The program takes place on the weekend of March 30 through April 1, 1984 at Congregation Beth Sholom. The guest speakers will be Paul and Rachel Cowan.

Mr. Cowan is presently a journalist for the *Village Voice*, and has written three books: *The Making of an Unamerican*, *The Tribes of America*, and *An Orphan in History*. Mrs. Cowan is a journalist, freelance photographer, and is the author of *Growing Up Yanqui*, telling of her experiences as a Peace Corps worker in Ecuador. Both have served in the Peace Corps, and were civil rights and anti-war activists. In his most recent book *An Orphan in History*, Mr. Cowan sights

the importance of tracing his family roots, and making his ethnic-cultural background a meaningful part of his life. Incidentally, this book was on the *Times* best sellers list, and can be found in your local book stores and libraries.

Four scholars from the humanities have been chosen as panelists to respond to the Cowans. They will provide the necessary balance for the audience, and broaden the viewpoint of the discussions. Specifically we will be addressing ourselves to the following issues: confronting one's past, examining the influence of social institutions, analyzing the history of assimilation, reviewing the role of religion in developing the value system, and confronting the question of personal identity.

Please mark your calendars and reserve this weekend, so you can participate in this enriching program.

Gratz Student Activities

By ROSLYN NATHANSON

Gratz Hebrew High School is not only a place for Jewish teenagers to learn about their cultural heritage, it is a place where Jewish teenagers can share ideas about what it means to them to be Jewish. In addition, they discuss current issues that affect their Jewish identities. Cults, inter-marriage, and assimilation have all been subjects at recent inter-high school conferences and weekend retreats call *kinnuses*, that have been planned by Gratz's Student Council. This year, in cooperation with the Philadelphia Gratz Student Council, a *kinnus* has been planned for Jan. 20, 21 and 22 at Camp Ramah. On Feb. 20, a ski trip will take place at Big Boulder in the Poconos. The annual Inter-High School Conference will be held on March 4 in Philadelphia. Also, a white water rafting trip in the Poconos has been planned for April 15, to give the students another chance to enjoy each other's com-



Gratz Student Council members: standing l to r, Deena Panitz, Cheryl Topper and Roslyn Nathanson, advisor. Seated l to r, Faun Riebman and Hillary Strilko.

pany outside of a school environment. The Wilmington Gratz Student Council also plans gatherings as the holidays approach. We are proud to say that our Hanukkah party went well, and we will soon be planning one for Purim.

The following students have been elected as council representatives for the current school year: Cheryl Topper, president; H.S. III and IV

representative, Deena Panitz (alternate, Shifra Vega); Hillary Strilko, H.S. II representative (alternate, Ben Shapiro); H.S. I representative, Faun Riebman (Jonathan Deitch, alternate); Prozdor representative, Lynne Miller (Aaron Shapiro, alternate).

As you can see, Delaware Gratz Hebrew High School provides much more than just classes and studies for its students.



Lynne Miller is the Prozdor (first year at Gratz) class representative.

Old Photos Wanted

The Jewish Voice will be publishing a special anniversary issue June 15 to commemorate the 50th anniversary of the Jewish Federation of Delaware. We'll need lots of photos from the early days of the Federation, so please, search your attics, basements, etc. for old photos and bring them to the Jewish Voice office, 101 Garden of Eden Road, Wilmington.

Need office furniture fast?



We have it all in stock, a huge selection for immediate delivery.



BERGER BROS. INC

Office experts since 1919.

Located at 3rd & Market, Wilmington
302-655-7166

Dateline

Mubarak Urged To Disavow Statement That Egypt Considers Camp David Dead

NEW YORK, (JTA) — Rabbi Alexander Schindler, president of the Union of American Hebrew Congregations, has called on President Hosni Mubarak of Egypt to repudiate a statement attributed to him by King Hassan of Morocco that "For Egypt, Camp David is dead. This is so because it has obtained all its fruits. Egypt has recovered its occupied territories. It recovered its petroleum. Because of this, the substance of Camp David has been drained."

Kohl Faces Rough Moments In Israel

By David Kantor

BONN, (JTA) — Chancellor Helmut Kohl's visit to Israel this week is expected to have its rough moments due to Israel's uncompromising opposition to planned West German arms sales to Saudi Arabia, a country still technically at war with Israel.

Senior government officials and aides to the Chancellor are therefore stressing the positive aspects of Kohl's journey — the establishment of better relations with Israel which public opinion polls say is supported by 71 percent of the population in the Federal Republic.

The Chancellor will be accompanied by Deputy Foreign Minister Alois Mertes, Werner Nachmann, chairman of the Jewish community in West Germany, Erik Blumenfeld, president of the German-Israel Friendship Association, and a large retinue to aides and advisors. More than 100 German journalists will follow the Chancellor in a chartered plane, an indication of the importance attached to his trip.

Half Of All West Germans Still Harbor Anti-Semitic Feelings

BONN (JTA) — Half of all West Germans still harbor anti-Semitic feelings of varying intensity, according to a study by Cologne University based on a sampling of 2,000 adults. The study showed that only 24 percent of the population fully rejects anti-Semitism.

The implication of the study is that very few Germans have changed their minds about Jews despite the widespread publicity given the massacre of Jews during the Nazi era, including the American-made Holocaust television here several years ago.

The Cologne inquiry found that persons of low income and little education are more anti-Semitic than academics and office holders. Anti-Semitic feelings are more intense among older Germans, those who lived during the Nazi era. Anti-Semitic sentiments were found in up to 88 percent of people living in small towns and villages, compared to 48 percent in large urban areas. There are, at present, about 30,000 Jews in the Federal Republic.

Bookfair Officials Apologize For Yom Kippur Date

NEW YORK, (JTA) — The officials of the annual Frankfurt Bookfair have apologized because the 1984 fair will fall on Yom Kippur. The West German fair this year will be Oct. 3-8 and Yom Kippur is Oct. 6.

The apology came in the form of a letter expressing "regret" to all the Jewish exhibitors and participants from Ronald Weber of the fair's press and information department in *Publishers Weekly*, the trade magazine of the book industry. "For various reasons the dates of the 1984 bookfair, cannot be changed," Weber wrote. "We are, however, doing everything in our power to give our Jewish guests the opportunity of celebrating this festival in Frankfurt. The city's Jewish community would gladly welcome any visitors wishing to attend worship and subsequently to participate in a Kosher meal."

Arab Diplomats Worry Officials In Kenya

LONDON (JTA) — Government officials in Kenya have expressed concern over recent activities of Arab diplomats in that country, according to reports by Radio Nairobi received here by the monitoring sources of the World Jewish Congress.

Shariff Nassir, assistant minister for Lands and Settlement, and Emmanuel Maitha, a member of the Mombasa Municipal Council, complained that Arab envoys are interfering in local affairs and urged them "to stop creating divisions among Moslem followers." The two officials said they were troubled that inter-Arab disputes were being pursued in Kenya at the instigation of representatives from Arab countries.

According to Radio Nairobi, "Political events in the Gulf states should not be brought to this country to divide the Moslems because all Kenyans want to live together as brothers." Maitha said "No foreigners should involve themselves in local affairs as it is not their concern."

Immigration To Israel On The Rise

TELAVIV (JTA) — Immigration during 1983 rose 24.3 percent over 1982, from 13,260 to 16,478, though newcomers from Eastern Europe dropped by 25.6 percent, from 3,275 in 1982 to only 1,767. Leon Dulzin, Jewish Agency executive chairman and head of the Agency's immigration department, announced this week.

Largest immigration increases were from Latin America, rising from 1,925 in 1982 to 2,799 — a 45.4 percent increase; a 28.5 percent increase from the U.S. and Canada, from 2,854 to 3,666; and a 17.2 percent increase from Western Europe from 3,650 to 4,278.

UNESCO And The U.S. —

(Continued from Page 1)

Gone are also the years when UNESCO published booklets on Jewish history and sociology showing that Jews lived in Palestine for many centuries and contradicting Arab and Soviet propaganda against Israel. Today one can hear speakers at UNESCO conferences promoting the nefarious slogan "Zionism is Racism" and find this slogan supported in resolutions.

In a foreword to a booklet, "Jewish Thought as a Factor in Civilization," by Prof. Leon Roth — which UNESCO ordered and published in 1954 — the agency explains that in soliciting this work it sought: "firstly, to refute the accusation of racism often levelled against Jews, by underlining what, in Judaism is the very negation of racial exclusivism; and secondly, to record the extent of the debt humanity owes to Judaism."

No longer does UNESCO make such pronouncements. The spirit of "Zionism is Racism" is today a dominant factor in the agency's policy.

Action By Congress

The new attitude of the U.S. government toward UNESCO, officially conveyed by the State Department to the UN agency, is provoking a good deal of uneasiness at the headquarters of the United Nations in New York. Fear is expressed that the withdrawal of the U.S. from UNESCO may be followed by withdrawals from other agencies, and may also be emulated by other nations.

Determined to resist the perverse use of the United Nations by the Soviet-Arab-Third World bloc as an arena for attack against the United States as well as against Israel. Congress has already reduced American funds for two UN agencies on that account. The Senate has also by a vote of 66 to 23 recommended withholding a fourth of America's annual dues to the United Nations. The recommendation needs only concurrence on the part of the House.

Leading Jewish organizations are at present interested also in the activity on the UN Decade for Women which has been used as a vehicle for anti-Israel expression. Legalization is now pending in Congress directing the President to use "every available means" to ensure that the Decade's final 1985 conference is not dominated

Other Hand —

(Continued from Page 6)

shall be slain before thine eyes." To Raba, who didn't pay him, Bar Hedyah gave the interpretation that his business would fail and that he would be so upset he wouldn't be able to eat anything. To Abaye, who had paid, Bar Hedyah told that his business would prosper and that he wouldn't be able to eat from sheer joy. When the same two men asked for a reading of their identical dream of seeing lettuce in the mouth of a jar, Bar Hedyah told Abaye, the paying customer, that his business would double like a head of lettuce, while to Raba he said that his business would be bitter like lettuce.

Even with all these bad interpretations, Raba never seemed to give up on Bar Hedyah, and, persistently, held back from paying him. The Gemara tells of Raba taking a dream of seeing two turnip-tops to Bar Hedyah and be-

by extraneous political issues outside of the conference, and their effect on continued U.S. support and participation in the conference.

The proposed legislation is supported by non-Jewish women's groups who seek direct U.S. funding for the UN "Voluntary Fund." Contributions to this fund had been withheld previously. The proposed legislation wants to make sure that U.S. contributions to the Fund are not being diverted to the Palestine Liberation Organization or any of its constituent bodies. The U.S. government is similarly interested in keeping the 1985 conference from being subverted by Soviet and Arab blocs.

Americans Distrust UN

In the UN headquarters in New York they have good reason to be nervous about the U.S. withdrawal from UNESCO. In addition to the fact that the withdrawal is a blow to the prestige of the UN system, UNESCO stands to lose about \$100 million a year which the U.S. provides for UNESCO's budget — a sum which the Soviet Union, the oil-rich Arab states, and the governments of the other countries villifying this country from UN platforms will hardly be willing to cover.

Nations friendly to the U.S. will not suffer by the U.S. quitting UNESCO because the U.S. can distribute the \$100 million directly among the needy states instead of through UNESCO. The State Department indicated this in its withdrawal statement declaring that "other means of cooperation with governments, as well as various forms of private sector activity, can serve UNESCO's original objectives."

All indications point in the direction that President Reagan and Secretary of State George Shultz will be strongly backed by all elements of the American people on the withdrawal from UNESCO. Popular support of the UN in this country has eroded to a point where any program that bears the UN label is suspect, it was pointed out in the memorandum submitted by the group of scholars professionally concerned with international affairs. The memorandum emphasizes that the American people are "outraged" by the present state of affairs in the UN, including the seating of a PLO representative in the Security Council.

ing told that it meant he was going to receive two hard blows. Sure enough, that very day Raba tried separating two blind men in the study hall who were quarrelling with each other, and they hit him twice. When one of them started to strike him again, he said, "Enough! I saw in my dream only two!"

You may wonder what finally happened to this fellow Bar Hedyah. Through a complex train of dream interpretations he got himself in trouble with the Roman Emperor in a matter of worms eating holes in the Emperor's silk garments. "They tied two cedars together with a rope, tied one leg to one cedar and the other to the other, and released the rope, so that even his head was split."

Those Romans were tough on interpreters and promoters.

Do You Compute? Sandy Marcus And Peter Popper Do!

One is a physicist. The other is a textile engineer. They each spend their days working for "The Company," and have offered their services one night a week to teach a beginning computer course here at the Center. Sandy Marcus and Peter Popper are donating their time to the Center for this course because they believe that everyone should have a basic understanding of computer skills, thus enabling them to compete in a world that is becoming rapidly computerized.

Science and technology represent more than a nine-to-five occupation for Marcus and Popper - it reaches into their spare time to become a pre-occupation of choice. Born in Brooklyn, "The Center of the Universe," Sandy Marcus reads to relax, yet his reading material bears a similarity to his profession. He reads science fiction and history, primarily histories of "the obvious technical things."

Peter Popper relaxes on his farm in northern Pennsylvania to escape the pressures of textile engineering research ("Everything from jogging bras to advanced composites!") Yet even there, he continually sees opportunity to apply his computer skills: "I'd like to computerize my neighbor's farm activities, but so far, they're not interested."

Popper first became interested in the application of computers in the home and small business when his wife, Rosalie, was trying to organize her wholesale costume jewelry business. She now uses a computer to control her inventory and customer listings. Says Popper, "A lot of people balk at the increase of computer usage, but in reality, it's freeing a lot of people from time-consuming, menial tasks."

"Many people feel that computer usage represents a terrible mental exercise," continues Popper, "but, in fact, like the Rubic's cube, it provides great entertainment. The same type of person who could sit for hours spinning that little colored cube will enjoy using a computer. It's not necessary to do something of value."

The computer course is an outcome of the Publicity Committee, which sought to provide an added value to the members of the Center, particularly for those members who do not participate in the athletic opportunities the Center offers. As a result, a Commodore Vic 20 Computer was purchased and placed in the lobby, where it is being utilized as a publicity display. The Center also purchased an additional eight units, which are used by participants in the course, and also by children in the summer Day Camp. Ben Su, another Dupont engineer, is also involved in the instruction of the course.

Neither Peter Popper nor Sandy Marcus ever taught a computer course prior to last Fall, when the class was first offered at the Center, but both have found that they enjoy having the opportunity to help others feel more comfortable with the role computers can serve in their lives - as these two valuable volunteers obviously do.



'the Center of Life'

478-5660

The JCC is a constituent agency of the Jewish Federation of Delaware and a member agency of the United Way of Delaware.

Snowball Run Sunday, Feb. 12, 1 P.M.



The Physical Education, Health and Fitness Department is sponsoring a five mile snowball run in cooperation with Marathon Sports and the Delaware Sports Club on Sunday, Feb. 12, at 1 p.m.

The course is fast and flat starting and finishing at the Jewish Community Center.

Long sleeve T-shirts will be given to the first two hundred runners registered. Pre-registration before Feb. 10, is \$6, post-registration on the day of the race from 11:30 a.m. to 12:45 p.m. is \$8. Registration forms are available at the Physical Education/Health and Fitness Department.

Prizes for the overall male and female winners plus first, second and third place runners in each age category are courtesy of the Jewish Community Center. Refreshments will be served after the race.

Please bring a friend and join us for this special fitness event.

"BABY" - A Tony Award Contender

New York critics have given the high sign that the musical "BABY" will probably win some Tony Awards. Call now to register for this delightful show on March 4, when the JCC Cultural Caravan travels to New York for an afternoon of theatre and a morning on your own. The story concerns the impact of parenthood on three couples. Ingratiating choreography, sassy staging and thoroughly amusing lyrics add up to an ingenious show.

The cost for JCC members is \$55, non-members \$60. Just bus seats are also available at \$25 for members and \$30 non-members. Call 478-5660 for reservations.

Back Pain Prevention Lecture!!!

A special lecture and slide presentation will be offered on Thursday, Feb. 9, at 7 p.m.

Topics covered will be the causes of back pain, proper body mechanics and posture.

Learn the safe and correct way to sit, stand, lift, bend, sleep and drive. In addition, exercises to enhance flexibility and abdominal strength through walking, swimming and cycling will be discussed.

Lecturer Helen M. Abrams, R.P.T. is the owner and director of the Back Clinic, located in Trolley Square, Wilmington. A physical therapist specializing in back problems, Abram's directs a clinic which provides a conservative approach to the management of the back through classroom instruction, films, lectures and demonstrations.

The fee for Center members is \$4, non-member fee is \$8. Please register in advance by Feb. 2, at the Physical Education, Health and Fitness Department or by calling 478-5660.

T'ai Chi Chuan What Is It???

T'ai Chi Chuan is a system of harmonious balanced movements designed to promote health and fitness and to develop strength the easy way. Slow, graceful motions improve coordination and flexibility.

A 10-week course will begin on Monday, Feb. 20, from 7:30 p.m. to 8:30 p.m. The fee for members is \$70 and non-members is \$85.

Instructor Alan Tillotson, M.A. will give a free special demonstration on Monday, Feb. 6, at 7 p.m. Tillotson studied under Chinese master Dee Chao and teaches every aspect of T'ai Chi Chuan in a clear, precise manner designed for the Western student. No previous experience is necessary. Call the Physical Education Health and Fitness Department at 478-5660 to register.



Lorin Hochman and Lillian Stillman form family ties as participants of the Junior-Senior Intergenerational New Year's Eve Party on Dec. 30. Over 100 "adopted" grandchildren and grandparents opened their hearts to each other as they shared an afternoon of food, music and games. The party is just one of a series of intergenerational events planned by the Children's and Senior Adult Departments.

Kutz Home Auxiliary Is Questioned

According to Leslye Heisler, president of the Auxiliary of the Milton & Hattie Kutz Home, questions about that organization abound. To help explain the objectives and activities of the Auxiliary, some of the most frequently asked questions have been addressed.

QUESTION: What is the Auxiliary?

ANSWER: The Auxiliary is an organization of men and women - independently incorporated - with the purpose of promoting and advancing "the objectives of The Milton & Hattie Kutz Home, Inc. This purpose shall be advanced by service to the Kutz Home and its Residents." (Article II, By-Laws of The Auxiliary of The Milton & Hattie Kutz Home, Inc.)

QUESTION: How does the Auxiliary accomplish its purposes?

ANSWER: The Auxiliary raises funds in order to provide the "extras" which add comfort and enjoyment to Resident life at the Home. Over the years, these "extras" have included two specially equipped vans, new furnishings, renovations to the Home's kitchen, employment of a Volunteer Coordinator, and ongoing support of the Home's recreational activities program.

QUESTION: Doesn't the Auxiliary also provide funding for the Home's operation?

ANSWER: Ordinarily not. However, in 1983 - when a serious operating deficit was forecast - the Auxiliary parted with tradition and allocated \$25,000 for operating purposes. Fortunately, the deficit did not develop and the \$25,000 was re-allocated for capital improvements such as storm windows, new outside

lighting, and equipment to improve energy efficiency at the Home.

QUESTION: Shouldn't the Auxiliary be helping the Home to meet its operating deficit each year?

ANSWER: The Auxiliary does not have unlimited funds and at the rate the Home incurs deficits (due to the charitable nature of its service) the Auxiliary's funds would be rapidly depleted. The Auxiliary must maintain a reserve for future needs of the Home such as expansion or capital improvements.

QUESTION: What does the Auxiliary do with its yearly income?

ANSWER: The Auxiliary generally spends all of its income on the Home and its Residents and, in recent years, has also drawn on its principal to fund various projects around the Home.

QUESTION: What about future needs?

ANSWER: The Auxiliary is attempting to conserve its endowment and to maximize earnings to ensure the future of the Home, should there be a major capital improvement or expansion. In the meantime, the annual income of the Auxiliary is spent on more immediate needs; for example, the refurbishment of the 500 wing lounge which has been selected as the project for 1984.

QUESTION: What if there were not an Auxiliary?

ANSWER: Care at the Home would certainly lack many of the touches which lend warmth and a caring spirit to the Home's service. Also, the physical facility would not be as well equipped and maintained. And, without the Auxiliary, a valuable resource of volunteer help would not be organized and utilized.

For further information on the Auxiliary of The Milton & Hattie Kutz Home, contact the Auxiliary at the Home, 704 River Road, Wilmington, DE 19809.

Local Havurah Holds Study Weekend

A little heralded and yet much appreciated and perhaps historic event took place recently when a group of families in a Havurah (Havurah means 'group of friends') hosted a guest, Rabbi Max Tickin, for an intense weekend of study and discussion.

The guest, Rabbi Max Tickin, was graduated from the Jewish Theological Seminary, spent 1948-49 in Israel, and was a Hillel rabbi at the University of Wisconsin, the University of Chicago and at the B'nai B'rith Hellel office in Washington, D.C. He now teaches Hebrew language and literature at George Washington University. He is active in the National Havurah movement and has contributed to the *Jewish Catalog*.

The hosts were a group of about 12 couples who have been meeting once or twice

monthly for the last two years in order to study and discuss various aspects of Judaism. The group structure also provides a community larger than the nuclear family, yet cosier than a synagogue in which to express Jewish concerns and celebrate the Jewish holidays and gain support in living a more fully Jewish life.

The weekend included a Friday evening discussion and study of *Tsedakah* (charity), a shabbat morning discussion of the weekly Torah portion, a Saturday afternoon study of a paragraph of Mishnah followed by a reading of "Jewish" poetry followed by Havdalah, dinner, and then Jewish identity games. Sunday morning included a discussion of group concerns, "Where do we go from here?" (Most participants went home to collapse in exhaustion.)



Samuel Kronfeld, photographed at the sign dedicating a walking path at the Kutz Home to the memory of his late wife, Lena Arsht Kronfeld. Kronfeld - together with his children, Harvey Kronfeld, Gerald Kronfeld and Adele Cohen - donated the walking path to the Kutz Home.

Kronfeld Walking Path At Kutz Home

Kutz Home resident, Samuel Kronfeld, was once advised by his physician that walking would be a good form of exercise for him. "Keep walking," he told me, and I have! Since the doctor (Mark Cohen, M.D.) is Kronfeld's son-in-law, he was able to enforce the prescription.

When Samuel Kronfeld became a resident of the Kutz Home, he was dismayed to find that the limited paved area in front of the building did not permit extensive walks. Then, one day, he had an idea: that he and his children - Harvey Kronfeld, Gerald Kronfeld and Adele Cohen - would contribute a walking path to the Kutz Home.

Completed in June, the Kronfeld Walking Path parallels part of the Home and meanders along the border of the Home's property. It is wide enough for

wheelchairs to pass and has benches placed at frequent points along its course. The path is dedicated to the memory of Lena Arsht Kronfeld.

According to Daniel Thurman, executive director of the Home, the path has been heavily used by residents since its completion. "Mr. Kronfeld and his family have made a very meaningful contribution to the Home's residents. I think that almost all of our residents and visitors have been out on the path. Some of our residents have even taken to doing their physical therapy exercises outside."

When asked the secret of his remarkable vitality, the 88 year old Kronfeld responds, "Keep walking!"



FRANK KESSELMAN, CLU
OCCIDENTAL LIFE
575-1100

ONE ROLLINS PLAZA
WILMINGTON, DEL.



18

EXCLUSIVE ** ELEGANT
KOSHER CATERING
BY
FRED GAMIEL

HOME and SYNAGOGUE
Also Available Banquet Rooms
for 800 Persons - Free Parking

CALL FRED or MARK
655-2748 or 475-8317

18

Diamond State
FORD

DELAWARE'S #1 Ford Dealer

Find out why

•Sales •Service •Leasing •Parts

303 E. Cleveland Ave., Newark • 738-0800

Gene Danneman Participates In 'Leadership Delaware'



Gene Danneman

Gene Danneman is currently participating in "Leadership Delaware," an intensive course designed to encourage, improve and develop more effective skills for volunteers working with community based agencies, public advisory boards and commissions. She was selected by the Jewish Federation to join 23 other Delawareans in this unusual program. Previous attendees include Shelley Mand and Laney Gordon.

Gene Danneman, a Federation board member, is essentially a professional volunteer. She has been active in the Jewish Community Relations Committee, Hillel Advisory Board and Temple Beth El. An active leader in Hadassah, she has served in

People In The News

local and regional leadership positions.

Included among her other activities have been leadership roles in the League of Women Voters, the JFD Young Leadership Committee, the Albert Einstein Academy board, and the observer corps in the Newark City Council. Danneman is also the 1982 recipient of the Gilbert Spiegel Leadership Award.

This year, participants will divide into four groups: volunteerism, hunger, land

use and the handicapped. Each subgroup will select a community oriented project to work on for six weeks. The achievement of the goal as well as the process used to attain the goal will be critiqued. Laney Gordon, Leadership Delaware "graduate" and Muriel Gilman, associate director of United Way will serve as liaisons for the "handicapped" subgroup. Bob Kerbel, assistant executive director of the Jewish Federation of Delaware is one of the "hunger" group's liaisons.

Leadership Delaware delegates will also attend many lectures including one on budgeting and planning given by Marty Mand, chairman of the Jewish Federation's Steering Committee on Budgeting and Planning.

Michael Josephson Receives Scholarship

Michael E. Josephson of 3 West Salisbury Drive, Wilmington, has been awarded a scholarship from the Rotary Foundation of Rotary International to participate in a special two-year program devoted to the study of Japanese language and

culture. He will go to Tokyo in mid-1984.

He is the son of Mr. and Mrs. Albert Josephson of Wilmington and the husband of Felice Josephson.

Josephson was sponsored by the Rotary Club of Wilmington, one of almost 20,000 Rotary Clubs in 157 countries. Scholarships are being granted this year to 900 students from more than 60 countries in one of the world's most international scholarship programs.

Josephson, who is a graduate of Princeton University, has studied Japanese, Russian and French and has a special interest in Japanese culture, arts and architecture. He was a graduate of Mt. Pleasant High School in 1979.



The Company Fop, L-R: Dana Edell, Elana Mamberg, Mindy Zukin. Bottom, L-R: Matthew Schnetter, Scott Zetlan, Jeffrey Montag, Dan Green.

An Untraditional Talent Show

It looks as though breaking a tradition is becoming a tradition. Ruth Zinman's third grade class at Albert Einstein Academy, for the second time, participated in a talent show. Each student planned and conceived his or her particular performance, showcasing a specific talent or skill. What made this even more unique, was the fact that most of the children's parents also participated. Zinman relates that during her latest visit to Israel this summer, she attended a graduation at which students and parents participated. She was inspired by this experience and feels that she has achieved the same feeling of warmth and family closeness.

The afternoon was started by Daniel Green who sang a lovely Yiddish song. He was followed by Jeffrey Montag, who was "The Jewish Chef." He prepared right in front of his hysterical audience Egg Kichlach. The results were almost disastrous. His mother, Judy, recited an amusing poem.

Joining the physical fitness trend was exercise girl Mindy Zukin who led everyone in a rousing "clap your hands, stamp your feet" routine. Her mother, Barbara, demonstrated her cooking talent by baking and handing out to the whole audience delicious candy. Next came the talented duo pianist team

of Dane Edell and her mother, Miriam. Elana Mamberg became a graceful ballerina. Her mother, Vivian, read to a captive audience the enchanting Sheldon Silverstein book, "The Giving Tree."

Matthew Schnetter was the pantomimist in the group with an impression of Rabbi Kalman who is trying to convince his lazy wife Hana Zelda to make some latkes. Matthew repeatedly changed from solemn rabbi to dizzy blond rebbetzen to the laughter of the audience. His mother, Charen, surprised everyone with a truly accomplished and professional rendition of "Second Hand Rose" complete with piano shawl. The very glib and humorous master of ceremonies was Scott Zetlan, and his father, Andrew, an excellent pianist, played "Tomorrow" from the show Annie. It was a joy to see all the children and parents joining in and singing together.

It looks like this non tradition is here to stay at Albert Einstein.

THE ECONOMY SHOP
NEEDS FURNITURE
 CLOTHING AND HOUSEHOLD GOODS
TAX DEDUCTION
PICKUP SERVICE
PHONE: 655-8437/8

body beauté

WINTERIZE YOUR SKIN

During the winter months, the skin suffers from dehydration, brought on by the combination of hot/cold temperature variations and dry heat of the office and home. The Body Beaute recommends a series of three monthly skin treatments which include:

- Free Skin Analysis
- Deep Pore Cleansing

Call Extract Treatment
 Elastin-Collagen Mask

(One treatment per month) **SERIES \$60.00**

Offer Expires 3/1/84

MONTHLY SPECIALS

Wed., Feb. 8 - RELAXATION TREATMENT - \$35.00

Relax while our beauty therapists treat your body to a half-hour of steam treatment and a half-hour massage.

Tues., Feb. 14 - VALENTINE'S DAY SPECIAL - \$45.00

Give him/her a wonderfully soft and pampered body for Valentine's Day. Includes steam treatment, Menthol Body Sloughing and essential oil therapy. FREE MASSAGE!

By Appt.
 Daily - Evenings - Sat.

475-9407

Suite 231 Brandywood Plaza

Support Our Advertisers

Going to New York shopping or to Reading for bargains?



Call **DOLLAR RENT-A-CAR**

AT: 655-7117

For their Van Specials

With or Without Driver

DAVE ROSENBLATT
 2100 Governor Printz Blvd.



Pictured (L - R): Helena Brodsky; Stuart Drowos (past president); Jane Wexler

Women Join Montefiore Mutual Benefit Society

1983 was a memorable year for the Montefiore Mutual Benefit Society.

For the first time in the organization's more than one hundred year's existence, women were elected to membership. At the September meeting, Jane Wexler was elected as the first female member and at the November meeting Helena Brodsky became the second.

Although the Society's by-laws were amended in 1979 to allow membership to all ap-

plicants of the Jewish Faith, no women had applied until the aforementioned.

On Jan. 5, elections were held. The following were elected: president, Jack Brodsky; vice-president, Edward Simon; treasurer, Joseph Kaufman; financial secretary, Robert Gamiel; recording secretary, Leon Chambers; trustees, Albert Sachs, Jacob Blumberg, Benjamin Goldberg, Joseph Greenwald and Harvey Strauss.

Beth Emeth School News

SHABBAT SERVICES

Hebrew classes are planning to conduct Shabbat morning services on the following dates: aleph class — Feb. 25; bet class — Feb. 4; gimel class — Feb. 11; dalet class — Jan. 21. All services are held at 11 a.m. and a *kiddush* following services will be given by the parents.

ADULT SUNDAY SCHOOL

The second adults Sunday school session will be held on Sunday, Feb. 26. This session is Life Cycle Events in Judaism and will be led by Suzanne Paul, director of education. The Brotherhood will have a breakfast and minyan at 9:15 a.m. (cost for breakfast is \$2) and the Sunday school session will begin at 10 a.m.

TREE CAMPAIGN

Our school tree campaign for Tu B'Shevat continues through Feb. 15. The celebration for a Seder for Tu B'Shevat began the campaign to have 100% participation in the JNF tree planting. We urge every student and faculty member to plant at least one tree (\$5) in honor of or in memory of someone special. This will link us here in Wilmington with the soil of Israel.

Arabs Massacre Arabs -

(Continued from Page 4)

For many weeks after Israel entered Lebanon in June 1982, Western media carried blaring headlines reporting outlandishly inflated statistics of death and destruction at Israel's hands.

After the dust settled, it became clear that the outrageous figures the media used were PLO propaganda creations bearing no resemblance to reality. To be sure there was death and there were casualties. But not "tens of thousands", as some reports had it.

Although ready to excoriate Israel for deaths real and imagined, there has been only scant media attention, where there has been any attention at all, to the widespread slaughter of Arabs by Arabs!

The "An Nahar Arab Report and Memo" of July 26, 1982, reports, "Ayatollah Khomeini's decision to launch a full-scale invasion of Iraq..." and Iraq's responses against Iran, "has claimed an estimated 90,000 lives..." in some 22 months. Jerusalem Post correspondent Wolf Blitzer points out that "Israeli officials have carefully monitored all the massacres in the Middle East. Along the Iraqi-Iranian border these past three years, they have noted, as many as 300,000 people may already have been killed, with whole towns and villages burned down."

An estimated 100,000 persons were killed in a series of massacres during the seven years of Lebanese civil war prior to June 1982. More recently, following in the tragic model of Sabra and Shatila, an estimated minimum of 350 Lebanese

Christians and Druze in a dozen villages in Lebanon's Shouf Mountains were massacred last summer and fall. Scores of civilians in the Christian villages of Bmrian, Birah and many others were killed by Druze, with Christian retaliation against Druze villagers in Kfar Matta, Abey, Binnay and more.

According to the London Times, hundreds of civilians have been executed in Iran. The Times says, for example, that in a single, two-day period this past August, 48 young women, teachers and students were executed. In a particularly gruesome report, the International Federation of Human Rights says that Iran, short of blood reserves for its warring troops, has drained the blood from political prisoners and taken it for use in their blood banks.

According to Amnesty International and many other sources, up to 25,000 persons were slaughtered in the February 1982 Syrian purge of the Muslim Brotherhood in the ancient Syrian city, Hama.

And the list of Arab massacres of Arabs, resulting in the slaughter of thousands upon thousands of innocents can go on and on.

The loss of even a single human life is a tragedy. The extent of that tragedy coming from internecine Arab strife is a horrifying lesson in inhumanity.

Serious "Middle East watchers" must recognize this largely unreported reality. The fundamental instability of Middle East geo-politics comes from the Arab World, not from the Jewish State.

Sue Barnett
Gifts & Candies

(215) 358-2610

For Husband, Wife, Sister, Brother or just a good friend — give them boxed chocolate hearts filled with delicious chocolates or one of our SPECIAL TOWER OF SWEETS. Come in and let us help you.

Hrs.: M-T-W-Th. — 10-5
Fri. 10-9
Sat. 10-5
Sun. 12-5

Phone Orders Taken.
We Deliver.

Classified

Classified ads are available at 75¢ per line (at least two lines, please). Send your ad, with check, to Classified Ads, The Jewish Voice, 101 Garden of Eden Rd., Wilmington, DE. 19803. (302) 478-6200

STUDENT TOUR & CAMP CONSULTANTS. No fee charged. 12 yrs. exp., over 500 programs represented. Gen. & specialty camps. Cross-country & foreign travel. Art, cooking, farming, computers, college study, etc. Ardmore office: Dorothy Graff, Diane Petrosky (215) 642-5882.

SEEKING MATURE, ACTIVE BABYSITTER for bright, active 18-mo. old in his home for Weds. and Thurs. 475-1769 after 6 p.m.

BRASS ANYTHING polished and lacquered. Call (302) 655-6654.

LUXURY CONDO FOR RENT. Buck Hill Inn in Poconos. Sleeps 4. Skiing, swimming, skating. Avail. 2/19-2/26. 737-5473 after 6 p.m.

JESS AUTO PARTS

NEW and REBUILT PARTS
our primary business

DAILY 9 A.M.-7 P.M.
SAT. 9 A.M.-3 P.M.
SUN. 12 P.M.-3 P.M.

OUR SLOGAN IS...
"Jess Sells for Less"

AMERICAN & FOREIGN PARTS

654-6021

CALL US FOR THE PART YOU ARE LOOKING FOR

654-6869

Jess Auto Supply Co.

119 (NORTH) MARKET ST., (BETWEEN FRONT & SECOND STS.) WILMINGTON, DEL. SINCE 1919

Thriftway

5%
SR. CITIZEN
DISCOUNT

Your Check is Welcome
TeleCheck

INDEPENDENTLY OWNED SUPERMARKETS

Tri-State Mall

1-95 & NAAMANS RD.
CLAYMONT, DEL. 19703
STORE HOURS: Sunday 9AM-5PM
Mon.-Sat. 8AM-9PM

Penn Mart Center

DU PONT BLVD. & BASIN ROAD
NEW CASTLE, DEL.
STORE HOURS: Sunday 8AM-6PM
Mon.-Sat. 8AM-10PM

Graylyn Crest Center

1718 MARSH ROAD
WILMINGTON, DEL. 19803
STORE HOURS: Sunday 8AM-6PM
Mon.-Sat. 8AM-9PM

Faulkland Road

CHESTNUT RUN CENTER
1710 FAULKLAND RD.,
WILMINGTON, DEL. 19808
STORE HOURS: Sunday 8AM-6PM
Mon.-Sat. 8AM-9PM

SAVE YOUR TAPES
Synagogues, Churches & organizations receive 1% of register tapes. See copy for details.

Dear Rachel

Dear Rachel,
I have read your column for the last couple of years, and enjoyed your common sense approach, but I never thought I'd be writing to you. Unfortunately, my problem is not one I can discuss with the Rabbi, as you'll understand shortly.

My son is a good student, both in public and Hebrew schools. Unfortunately, I think he is learning his Hebrew school lessons too well. He has been asking me to light candles Friday night and when I serve ham or bacon, he ostentatiously opens a can of tuna fish. My son is the kind of kid who does everything in a big way, and I certainly don't want him to grow up to be a rabbi. My husband and I are thinking of pulling him out of Hebrew school. Should we do it, and if so, how do we explain it to him? He can get bar mitzvahed in my parents' Temple, so that is not an issue. We need your advice on Hebrew school. Thanks.

Puzzled Parent

Dear Parent,
The phrases "But we are not religious" and "I don't want my kid to be too Jewish" are heard so often in discussion about Jewish education,

that I can only conclude that they are code words for real discomfort about Jewish religion or what it means to be Jewish. Thousands of kids are turned on by Jewish schools or summer camps, but very few of them grow up to be rabbis. Similarly, few of the children who love soccer or tennis grow up into pro's. Stop worrying, children have many passing loves & enthusiasms. Please realize that Jewish schools are in the business of raising knowledgeable Jewish laity, not rabbis. Your son can eat kosher or celebrate Shabbat or learn Jewish history without becoming a rabbi. But you still need to figure out why you feel so uncomfortable about your son's actions.

You and your husband must ask yourselves some difficult questions. What did you want your son to gain from Hebrew School? Why do you want him to be bar mitzvahed? Is there something about being religious or religious people that makes you uncomfortable? Why? You might want to include your son in some of these discussions. Please don't dismiss talking to your rabbi; he is undoubtedly familiar with your problem and may be able to help you think things through.

The most important thing is to help your son feel good about being Jewish. You can do it - good luck.

RACHEL

Send letters to "Rachel, c/o Jewish Family Service, 101 Garden of Eden Rd., Wilmington, DE 19803." Names and details will be altered in published letters to protect your privacy.

Jewish Family Service of Delaware
Jewish Family Service is a constituent agency of the Jewish Federation of Delaware and a member agency of the United Way of Delaware.

Jewish Family Service Seeks Volunteers

Jewish Family Service announces that Barbara Roisman has been named to the newly appointed position of Coordinator of Volunteer and Home-Aide Services. A grant from the Kutz Foundation has made possible this professional position and a one-year pilot project to expand our services to older adults and their families.

Barbara Roisman will oversee the recruitment, training and supervision of volunteers to work in partnership with our professional staff to meet the needs of elderly people. She will match talents and available time of each volunteer to a specific assignment, i.e. Friendly Visitor, Telephone Friend, Driver or Office Support for the Jewish Family Service staff.

Evaluating her own ex-Service volunteer, Roisman has found that volunteering provides an opportunity to feel good about yourself while accomplishing something worthwhile by offering a car-

ing friendship to a home-bound senior.

Previously employed as a Training Specialist for the Jewish Employment and Vocational Service of Philadelphia, Mrs. Roisman brings with her a history of service to the Jewish community. After receiving a Bachelors in Social Work from Fairleigh Dickinson University, she worked as a geriatric caseworker for Jewish Family Service in Tucson, Arizona. She earned her Master's degree in Vocational Rehabilitation from the

Don't Hesitate To Call Your Fuller Brush Man, Tom Seidel 798-1770



University of Arizona, specializing in vocational counseling and testing. She has worked as a Vocational Evaluator for the Dept. of Rehabilitative Services in Norfolk, the Glendale High School District and Beacon Foundation for the Mentally Retarded in Arizona.

If you have time and energy to give, become a Jewish Family Service volunteer. All volunteers will receive orientation, ongoing training, and supervision. Call the Jewish Family Service office at 478-9411 to meet with Barbara Roisman.

Romance your Valentine.



Valentine's Day. Tuesday, Feb. 14.

BRANDYWINE FLOWERS
1303 Veale Road
Wilmington, DE 19810
PHONE: 302-478-6231
(Corner of Marsh and Veale Roads)

Patronize Our Advertisers

HARRY DAVID ZUTZ
Insurance Exclusively at 300 Delaware Avenue. Underwriting Facilities for: Fire Casualty, Auto, Marine, Surety Bonds.
Specialists for unusual risks.
658-8000

OLSEN
TEMPORARY SERVICES
WE KNOW HOW TO HELP

WILMINGTON	575-1700
NEWARK	738-3500
CONCORD PLAZA	478-6110
DOVER	1-734-5379

Gilbert J. Spiegel Founder
Pat Spiegel President


Bellemeade
Introducing a new community of eleven custom built homes on a private cul-de-sac located off Veale Road, in desirable North Wilmington.

- Wooded homesites
- Select your own plan
- Fine appointments
- Priced from \$139,900

Built by Concord-Hill, Inc.
THE GREENVILLE COMPANY, INC.
4006 Concord Pike
Wilmington, Delaware
478-3660



Albert Einstein Academy



THE BEST OF BOTH WORLDS IS RIGHT HERE
Ideally located in North Wilmington and just 1½ miles south of the Pennsylvania border at the Jewish Community Center complex, Albert Einstein Academy offers your child:

- * A superior program of general and Judaic Studies.
- * A low Teacher/Student ratio, maximum class size 18 students.
- * Kindergarten through 6th grade.
- * Students who place well above their grade levels in national testing.
- * Scholarship aid.

DISCOUNTED TUITION FOR REGISTRATION BY FEBRUARY 15, 1984

FOR FURTHER INFORMATION, WRITE TO:
ALBERT EINSTEIN ACADEMY
101 Garden of Eden Road, Wilmington, DE 19803 • or call (302) 478-5026

Obituaries

Samuel Berkowitz

Samuel Berkowitz, 62, of 17 Sailboat Circle, Newark, died Jan. 8 in the Newark Emergency Room.

Mr. Berkowitz was a member of Temple Beth Emeth and Unity Lodge A.F. and A.M., Newport.

He is survived by his wife, Myra; two sons, Jan of Newark and Mitchell of Wilmington; a daughter, Cheryl Navitsky of Newark; a brother, Leonard of Wilmington and two granddaughters.

Funeral services were held Jan. 10 at the Schoenberg Memorial Chapel, 519 Philadelphia Pike.

Interment was in Beth Emeth Memorial Park on Faulkland Road.

In memoriam the family suggests contributions to your favorite charity.

Henry J. Orkin

Henry J. Orkin, 79, of 415 Fisher Ave., Milford, died Jan. 12 in Milford Memorial Hospital of a heart attack after being stricken at home.

Mr. Orkin was a cattle dealer for over 50 years in the Milford area. He was an Army veteran of World War II. He was a member of the Milford Kiwanis Club, the American Legion Post 3 of Milford for 35 years and the Forty and Eight.

He is survived by his wife, Agnes A.; a brother, Benjamin of Milford; three sisters, Dora Pikus, Belle Rosenzweig and Esther Smith, all of Milford.

Services were held Jan. 15 at the Berry Funeral Home, N.W. Front Street, Milford.

Interment was in Sharon Hills Cemetery, Dover.

In memoriam the family

ISRAEL BONDS

For sale and redemption information call:

478-2087

Schoenberg Memorial Chapels



In the hallowed tradition of our faith....

a dignified setting with reverence for customs and observances in strict accord with family wishes.

519 Philadelphia Pike
762-0334

suggests contributions to the American Heart Association, Railroad Avenue and Depot Street, Georgetown 19947 or the American Lung Association, 1308 Delaware Ave., Wilmington 19806.

Joseph Schard

Joseph Schard, 72, of the New Jersey Memorial Home, Vineland, N.J. died Jan. 13 in the Newcomb Hospital, Vineland.

Mr. Schard retired in 1971 after 26 years as a procurement supervisor for the Army Electronic Command in Philadelphia.

His wife Mary died in 1981. He is survived by two stepdaughters, Susan Markowitz of Newark and Sammi Brown of Loveland, Colo.; two sisters, Sally Field of Philadelphia and Betty Sigholz of Cocoa Beach, Fla.; and three grandchildren.

Graveside services were held Jan. 15 at the Har Zion Cemetery, Collingdale, Pa.

In memoriam the family suggests contributions to Temple Beth El Building Fund, 70 Amstel Ave., Newark, Del. 19711.

Funeral arrangements were made by the Schoenberg Memorial Chapel.

Rosa L. Kahn

Rosa L. Kahn, 85, of the Newark Manor Nursing Home, West Main Street, Newark, died of pneumonia Jan. 18 in the General Division.

Mrs. Kahn retired in 1968 after five years with Harris Hanby Realtors in Wilmington. Before that, she was with Joseph Raronge Realtors in Cleveland. She was an active member of the Wilmington Senior Center and Sellers Senior Center.

She was a graduate of Flora Stone Mather College of Case Western Reserve University in Cleveland. She moved from Cleveland to Wilmington in 1961.

She is survived by a daughter, Bernadine K. Camin of Windybush; three grandchildren and six great-grandchildren.

Services were held Jan. 20 at the Chandler Funeral Home, 2506 Concord Pike, Sharpley.

Interment was private. In memoriam the family suggests contributions to your favorite charity.

Major Sa'ad Haddad Dies

Major Sa'ad Haddad, a brave military officer, a selfless Lebanese patriot who served his people with dignity through some of Lebanon's darkest hours, died on Jan. 13, in his town of Marjayoun, in southern Lebanon.

During his military career, in all his actions, Major Haddad reflected the will of the people of southern Lebanon - Christian and Moslem alike - who refused to capitulate to PLO terror and who desired to live in peace with Israel.

The struggle against PLO terrorism was the basis of the common interest between Haddad's forces and the State of Israel. With Major Haddad's death, Lebanon has lost a courageous officer who fought for Lebanon's freedom - and Israel has lost a good Lebanese friend.

A native son of southern Lebanon, Major Haddad was born in 1937 to a Catholic farming family in the town of Marjayoun, where he grew up with his sister and four brothers. At age 14, he graduated with honors from a Patriarchal Secondary School in Beirut.

Major Haddad joined the Lebanese Army in 1957, beginning a military career which was to span more than a quarter of a century.

Attaining the rank of first lieutenant after completing a course at a military college in France in 1960, he was assigned to a military base near Beirut as a platoon commander.

In 1967, as company commander, he was assigned to the "First Battalion," based in Marjayoun, which was charged with safeguarding the security along the Lebanese border. In 1968, Haddad was wounded in an encounter with a Fatah (PLO) terrorist squad.

During the late 1960's, he became well-known as an outspoken advocate of Lebanese independence and sovereignty, and he actively resisted Syrian intervention and the PLO presence on Lebanese soil.

After completing a military course in the United States in 1973, Haddad led many operational missions in the fighting between the Lebanese army and the PLO terrorists.

In 1976, Lebanon's President Franjeh authorized Haddad's appointment as



ISRAELI PRIME MINISTER ATTENDS HADDAD FUNERAL

MARJAYOUN, Lebanon-Israeli Prime Minister Yitzhak Shamir, extreme left, stands before the coffin of Lebanese Christian Militia Leader Sa'ad Haddad on Jan. 16, during funeral ceremonies at Marjayoun, Lebanon - Haddad's home town. The Israeli-backed military officer died of cancer on Jan. 14. RNS Photo

commander of the Lebanese force in southern Lebanon, giving him a mandate for maintaining the security and safety of the residents of the area. Haddad's forces were deployed in three enclaves, each surrounded by terrorist positions. At times, the only direct connection between them took place at the "Good Fence," which Israel had opened to provide medical and humanitarian assistance to the residents of southern Lebanon.

During the Lebanese civil war, in 1976, Haddad was dismissed in absentia from the Lebanese army by the then pro-Syrian Lebanese government on grounds of "treason." From then on, he continued to command his militia in southern Lebanon independently. Following Israel's "Operation Litani", in June 1978, the local militias retained control of the border strip which united the three enclaves. In time, the Maronite Christian and Shi'ite Moslem inhabitants of this 75 miles long by 3 miles wide strip of land began to develop common interests and to work together, especially in their struggle against the PLO. Maronites and Shi'ites served side by side in the militias under Major Haddad's command.

In 1984, the Lebanese State Court in Beirut reinstated Major Haddad in the Lebanese Army, declaring that his dismissal seven years

before was illegal since it had not been ordered by the Army Disciplinary Council of the National Defence Council. With his reinstatement, Haddad regained his rank and all his rights and privileges. The judgement of the court would thus seem to indicate Lebanese approval of Major Haddad's actions and his cooperation with Israel.

Major Haddad is survived by his wife, Terese, and six daughters.

Israel believes that good-neighborly relations will continue between it and the people of southern Lebanon - and with the people of Lebanon as a whole - as anchored in the agreement signed between the two countries on May 17, 1983. The continuation and expansion of these relations will serve as the most fitting and honorable commemoration of Major Sa'ad Haddad.

PREPARE FOR:

COLLEGE BOARDS

SAT

Stanley H. KAPLAN
Educational Center

TEST PREPARATION
SPECIALISTS SINCE 1938

FOR INFORMATION CALL
737-1124

Winter Course To Be Held
In North Wilmington

• FRESH BREWED
• CAFFEINE FREE
• HOT CHOCOLATE
• CUP SODA

GOOD BUSINESS
MAKES
A PLEASURE

CUP-A-SOUP
ICED TEA
NO CONTRACT
NO DEPOSIT

TAKE-A-BREAK
COFFEE SERVICE

CATERING for BUSINESS
FUNCTIONS
COFFEE and DONUTS

658-8571
413 8th Ave.
Wilm., De.

ASK ABOUT
OUR
VENDING
DIVISION

Newark Hadassah

The Newark Chapter of Hadassah will hold its next meeting on Feb. 6, at Temple Beth El in Newark. Social hour begins at 7:30 p.m. and the meeting begins promptly at 8 p.m.

Caleb H. Smith Jr., senior vice president for Dean Witter Reynolds Inc. will be speaking on "Various Currently Available Investment Options." Questions and discussion will be welcome. For further information, please call Gail May 368-2950 or Carol Barnett 366-7799.

Young Professionals Group

Y.P.G. will have a Sunday brunch at the Sheraton - Brandywine on Concord Pike on Feb. 5. Brunch will begin at 11:30 a.m. Please RSVP by Friday, Feb. 3 to any of the following people: Sue - 475-0840, Phil - 762-4440, or Rich - 358-2969. Cost will be \$9.95.

Y.P.G. will have a House Party at Mike's on Saturday, Feb. 11 beginning at 9 p.m. The charge is \$4. Please call Mike at 876-4450 for directions. The address is: 348 Saybrook Lane, Wallingford, Pa.

Beth Shalom Sisterhood

The next meeting of Beth Shalom Sisterhood will be held on Feb. 7 at 12:30 p.m. Beth Shalom Congregation, 18th St. and Baynard Blvd.

To celebrate Jewish Music Month, Dr. Irving Cohen, Prof. of Music History, at West Chester University will present the program "Is It Jewish Music?"

For babysitting reservations, please call Barbara Citron, 475-8773. A mini-lunch will be served.

Organizations in the News

Beth Shalom Men's Club

On Sunday, Jan. 22, the Congregation Beth Shalom Men's Club will hold its monthly community program breakfast. This month's guest will be Detective Ron Kocker, of the Delaware State Police Auto Theft Unit.

Kocker will explain the function of the ATU and address in detail the subjects of: how is a car stolen; car dealer inspections and investigations; what are a per-

son's rights and duties when buying and selling a car; the laws regarding garagekeeper's sales, sheriff sales, constable sales; and auctions of cars; and much more! After his presentation, the speaker will accept questions from the audience.

The Dover community is invited to attend this program and breakfast and will begin at 10 a.m. Call 674-0900 for reservations.

AKSE Sisterhood Recovers

Adas Kodesch Shel Emeth Sisterhood is pleased to announce that it is on the road to recovery!

After two very successful meetings in November and December, our next program on Monday, Jan. 30, promises to be excellent. Maxine LaPlace, attorney, will enlighten members regarding "What Every Delaware Woman Should Know About the Law." LaPlace will discuss such important topics

as credit, estate planning, and equal pay act/comparable worth. Light refreshments and babysitting will be provided at this noon meeting.

Reservations are requested and can be made by calling Nancy Muderick at 478-1751 or Lynn Davis at 478-4951.

We look forward to the return of any "long-lost" Sisterhood members. We hope you will come back and give us another chance!

Beth Emeth Couples Club

Beth Emeth Couples Club will celebrate the Chinese New Year, "The Year of the Rat" on Feb. 11, at 8 p.m. at the Imperial Inn (Silver Side and Concord Pike.) We will have a full course meal, everything from soup to nuts. The cost to couple club members and new members to Temple Beth Emeth is \$25 per couple, non-members \$27. This price includes the dinner and the tip.

For reservations or additional information please call Barbara Katz at 652-5823. Send your checks to Lois Chalawsky 1013 Timberwyck Rd., Wilm. 19810. Deadline is Feb. 9.

Membership in Couples Club costs \$5 per year per couple. Call Lois at 475-3423 for information about Couples Club.

Wilmington Hadassah

MEDIA ANALYSIS OF TERRORISM

On Thursday, Feb. 9, at 7:30 p.m., the Shalom Group of the Wilmington Chapter of Hadassah will hold its next meeting at the home of Cissie Golden, 4310 Washington Boulevard.

The speaker will be Israel Bar-Ishay, a media consultant living in the Philadelphia area. He is an Israeli citizen with an M.A. degree in mass communications from Temple University. Bar-Ishay has done extensive research on the Israeli media, especially on Israeli press coverage of the PLO. He is a freelance reporter and has had articles published in the *Jewish Exponent* covering Middle East events. Bar-Ishay is the producer and host of the WIBF-FM (103.9) "An Hour with Israel" on Saturday mornings, in addition to presenting weekly commentaries on "Voices of Jerusalem," Friday mornings on WKDV-FM (91.7).

Refreshments will be served, and husbands are cordially invited.

CARPER TO SPEAK

On Monday, Feb. 13 at 12:15 p.m., the Sabra Group of the Wilmington Chapter of Hadassah will hold its next meeting at the Jewish Community Center.

The featured speaker will be Congressman Thomas R. Carper. In early January

Rep. Carper returned from an important congressional mission in Israel. He received first-hand knowledge and briefings that he will impart to us.

Myrna Rubenstein, Sabra Group president, will preside over an interesting meeting. A mini-luncheon will be served. Leslie Balick, Lillian Binder, and Sylvia Kessler are in charge of it.

There is no charge, and the meeting is open to the public.

Beth El Friday Night Forum

Carol Maltenfort will be the principle speaker at the Beth El Friday Night Forum on Feb. 17. She is a graduate of the University of Delaware and has studied at Temple University, Drexel University and is now working on a master's degree in ancient history at Delaware.

She has been to Israel many times, having studied with Yagal Yadin the well known archaeologist and soldier. Several years ago Maltenfort did a field study in Israel of the controversial Hebrew Israelites. Her talk, "Digging up Pithom" is the result of her recent archaeological work in Egypt.



cookware & utensils, plus a healthy dash of how-to!

creative cooking

christiana mall 366-7484
brammar plaza 475-0390

BALLOONS! FUN!

HAPPY BIRTHDAY TO RORY!

OPEN HOUSE
SUNDAY, FEBRUARY 12th
1:00 - 5:00 P.M.

Fried Chicken Sandwiches Hors D'oeuvres Dessert

EVERYONE IS INVITED!
ENJOY! ENJOY!

ELEGANTE-CATERING

1708 Naamans Road
Howard and Sharon Cohen
(302) 475-5300

1 YEAR OLD! CELEBRATION!

RING LEADER SPECIALS FOR VALENTINE'S DAY

14K FLUTED HEART EARRINGS

Regular Price \$29.95

Sale Price **\$14.98**

Three Diamond PUFFED HEART ON A 14K 16" CHAIN

Regular Price \$130.00

Sale Price **\$69.95**

14K YELLOW GOLD LOVE KNOT EARRING JACKETS

Regular Price \$100.00

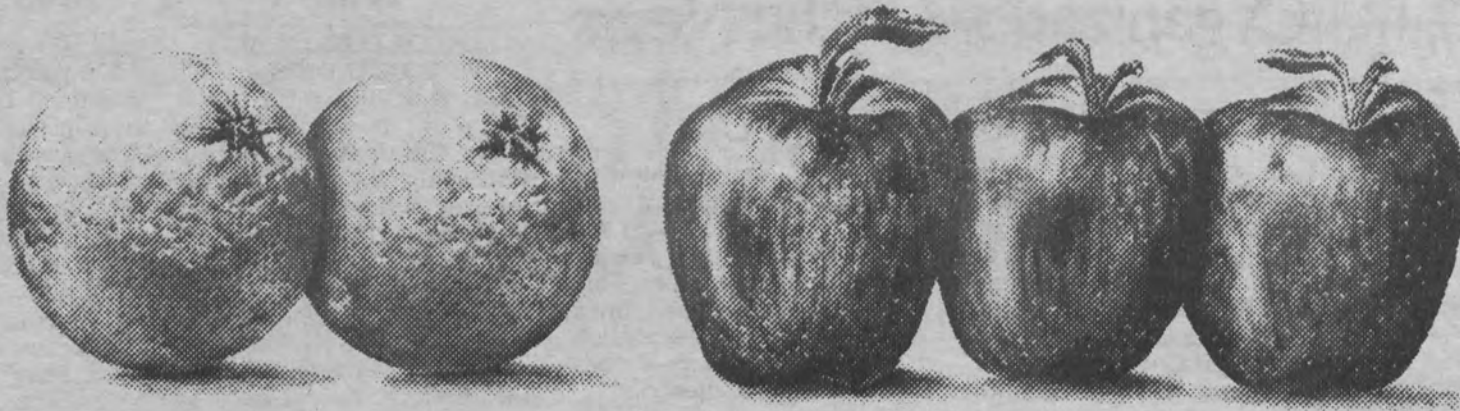
Sale Price **\$50.00**

HARRIS Jewelers

Branmar Plaza
MARSH AND SILVER SIDE RD.
OPEN MON.-FRI. 10-9; SAT. 10-8
475-3101

Our Newest Location
824 Market Street On The Mall
OPEN M-Sat. 9-5:30 • 655-6253

4377 Kirkwood Plaza
OPEN MONDAY-SAT. 10-9:30
999-9901






Their IRA

If you review other bank IRA choices, commonly you'll find only two: CDs and money market accounts.

Our new I.R.M.A.

Wilmington Trust introduces the Individual Retirement Management Account. It's a fresh new idea in tax-sheltered retirement plans that gives you more options and opportunities than ordinary IRAs. That's because our new I.R.M.A. allows you to direct and manage your funds among these three alternatives:

-  **An Insured Money Market Retirement Account.** Your 1983 tax-year deposit and subsequent deposits are made into this account. From here you may direct funds into CDs or all the way to Wall Street.
-  **Select Term Certificates.*** You select the day your CD matures. This allows you greater flexibility in planning to meet your investment goals.
-  **Discount Brokerage Services.** Add greater profit potential by investing in stocks and bonds, while saving up to 70% on brokerage commissions. And remember, your earnings are tax-sheltered too.

Give yourself a better chance to retire exactly the way you plan. With an I.R.M.A. you don't merely make deposits; you can now actively control your investments. Perhaps you seek greater earnings or absolute security or to diversify your portfolio. Now, with an I.R.M.A. from Wilmington Trust, you can set your own personal goals and follow your own strategy for meeting them.

Free. Guide to getting the best from your I.R.M.A. With the I.R.M.A. many new strategies are suddenly possible. Discover them in our fact-filled new booklet. Visit any of Wilmington Trust's 32 offices statewide for your copy, or call 651-8551.

*Minimum 3-month term, \$1,000 deposit. FDIC insured. Substantial penalty for early withdrawal.



**WILMINGTON
TRUST**

MEMBER FDIC