

Jewish Historical Society
 Mr. Julian H. Preisler
 505 Market Street Mall
 Wilmington, DE 19801

Vol. 29, No. 3 3 Cheshvan 5756 October 27, 1995 20 Pages
 PUBLISHED BY THE JEWISH FEDERATION OF DELAWARE 100 W. 10TH ST., SUITE 301, WILMINGTON, DE 19801

Rabbi Avraham Rosenblum Hired for U of D Hillel Position

By DAN WEINTRAUB
 Editor of *The Jewish Voice*

Dr. Robert Gelman, President of the Board of Directors of Hillel at the University of Delaware has announced that Rabbi Avraham Rosenblum will serve this year as Hillel Director. "We are pleased that Rabbi Rosenblum has accepted the position at Hillel," Gelman told *The Jewish Voice*. "His natural enthusiasm will energize our current program and jump-start new activities for the Jewish students on the Delaware campus," said Gelman.

Rabbi Rosenblum, who lived in Israel for 18 years, has pledged to be "as innovative as possible." He looks to begin a graduate students network. He anticipates establishing inroads into the community. Rosenblum hopes to reach out to students through a variety of methods stating "you never know what's going to engage someone's interests." Rosenblum will emphasize creative resources, speakers, lectures, and coffeehouse programs, to name a few methods, to reach students. At the same time Rabbi Rosenblum hopes to make connections to Judaic resources available to students. Rosenblum also plans for the Hillel kitchen to be koshered under the auspices of Adas Kodesch Shel Emeth's (AKSE) Rabbi Sanford Dresin, the moshgiach of the Va'ad HaKashrut.

Rosenblum, who describes himself as a "Paradox" Jew, earned his Rabbinical Degree from Rabbi Nochum D. Herman, Z'L, Jerusalem, Israel in 1982. He earned an Associate Degree in Jewish Studies from the Diaspora College For Jewish Studies, in Jerusalem, Israel in 1976. He attended Temple University from 1968 to 1970. His recent experience includes stints as Director of the Jewish Collegiate Network and as the Executive Director, Sinai Academy High School. Rabbi Rosenblum, a guitarist and singer-songwriter, was the originator and leader of The Diaspora Yeshiva Band, described as "an intentionally acclaimed band, that combined American rock and country-style music with traditional themes as a way of engaging the interest of young Jews in Judaism and Israel." Rosenblum says that The Diaspora Yeshiva Band was the "forerunner of groups like the Klezmatics."

Dr. Gelman notes that hiring Rosenblum comes at a time when the Board of Directors are working to make some other significant changes at Hillel. "The Board of Directors have just completed a process of re-defining itself and its role in leading Hillel" said Gelman. "Implementation of these changes are a key goal for the next year." He continued, "The Board will work to strengthen our relationship with the Delaware Jewish Community. Another need is to build our relationship with the national Hillel organization, which will provide us access to information on new approaches towards providing services to all the Jewish students at the University of Delaware." Gelman told *The Jewish Voice* that "New this year will be an effort to establish a program for graduate students. This group, with its own unique requirements, has not previously supported by Hillel at the University of Delaware." Gelman also believes the location of the new U of D student center, near the Hillel facility, will be beneficial to the Hillel program.

"There is a need to actively engage students



Rabbi Avraham Rosenblum

at the University, particularly those who do not actively identify with the Jewish community," Dr Gelman said. "Rabbi Rosenblum will be implementing programs to appeal to various student interests."

Rosenblum, who attended the original Woodstock, is confident in his ability to establish a rapport with college students. He relates a conversation he had with Richard Joel, the Executive Director and International President of Hillel, who compared the role of a Hillel Director to that of a farmer planting seeds of Jewish ideas, concepts and commitments, as opposed to the role of a salesman. Rosenblum notes that many Jews have a strong social and moral conscience, suggesting that college students can be reached through their pursuit of causes and spirituality. He calls the Director position a "big job," noting that it is "not a one man show."

Hillel is a beneficiary of the UJA-Federation campaign which is administered locally by The Jewish Federation of Delaware (JFD).



Arafat Extends Olive Branch To Jewish Communal Leaders

Young Cites This
 As "Remarkable
 Progress"

By CYNTHIA MANN

NEW YORK, (JTA) — Palestine Liberation Organization Chief Yasser Arafat told an American Jewish audience this week that differences between Palestinians and Jews must and can be overcome because there is no alternative. "There must be a compromise," he said Monday. "There must be a peaceful solution."

Amid extraordinarily tight security, Arafat delivered a rambling speech before roughly 150 members of the Executive Committee of the National Jewish Community Relations Advisory Council about the common land, history and suffering of Jews and Palestinians and their problem-plagued quest for peace.

Arafat's address to the Jewish leaders came one day after joining world leaders to participate in the UN General Assembly's 50th anniversary celebrations. Arafat, who last appeared at the world body in New York 21 years ago with an olive branch and a gun holster, this time told the world he had come "with the olive branch hoisted over the peace of the brave." The Arafat-NJCRAC meeting was a reunion for some. A top-level NJCRAC del-

egation met with Arafat at his Gaza beachfront office a year ago.

On Monday, the atmosphere of expectant quiet was shattered by two protesters shortly after NJCRAC chair Lynn Lyss introduced Arafat by saying the peace process "does not require us to forget the past," but "does require us not to be prisoners of the past." An unidentified man and a woman were swiftly ejected by police after shouting, "You are a murderer," and "Shame on you, shame on you, NJCRAC."

Sparse but loud protests against the meeting were also mounted outside the B'nai Zion building on E. 39th Street where Arafat spoke. "Shame on you, B'nai Zion," read one banner. "Yasser Arafat still a terrorist," read another.

Arafat opened his remarks by playing down the protests. "We can understand it," he said, making a point of setting aside his prepared text and "speaking from my heart." "We know it is not easy to overcome all these dramatic events suddenly after two agreements in Washington and one in Cairo," he said, referring to the agreements on Palestinian self-rule reached between Israel and the PLO over the past two years. But "we are not only cousins, we are peace partners," he said. "To accept or not accept, it's a fact."

Continued on page 19

INSIDE

ARTS	16
BRIEFS	3
BUSINESS/PROFESSIONALS	12
CALENDAR OF EVENTS	14
CLASSIFIED	19
EDITORIAL	4
ENTERTAINERS	11
LATE BITS	2
LOCAL	6
NATIONAL • INTERNATIONAL	17
NEWS & COMMENTARY	3
OBITUARIES	18
OPINION	5
PANIM EL PANIM	9
RESTAURANTS	10
SYNAGOGUE LIFE	15

SPECIAL REPORT: KUTZ PROGRESS

Caring For The Kutz Home

By JOAN WACHSTEIN

Special to The Jewish Voice

Food, Shelter, Clothes...

This was part of the confirmation script my Confirmation Class presented at Congregation Beth Emeth in 1956. These words have followed me to this day. I am Joan Wachstein, and I have lived my life in Wilmington. As I prepared to write this article, many, many thoughts kept creeping into view. I have been part, not always an active part, in four changes that have occurred to the Kutz Home.

These changes span generations, and show what has happened to our community. The community may have changed people wise. We are many more people now, from very diverse backgrounds. The neighborhoods may have changed address wise. Most of us no longer live in the same area, we are spread out across the state, but the bottom line remains the same.

Food, Shelter, Clothes...

Providing housing and care for Jewish aged and to provide shelter for Jewish Transients. This was the Mission statement upon which the Ladies Bichor Cholem Society was founded. The basic necessities of life are what motivated the women of the Bichor Cholem Society to organize in 1902.

Food, Shelter, Clothes...

In 1940, the buildings at 207-211 Washington Street were purchased by the Federation from the Episcopal Diocese to be remodeled and updated to provide Food, clothing and funds for sick, needy and unfortunate Jews. This new facility had a chapel for synagogue services and the necessary modern conveniences of the time.

Food, Shelter, Clothes...

The need for 'skilled' medical and nursing care, and the changing of a neighborhood necessitated the build-

ing of a new facility on River Road to be known as the Milton and Hattie Kutz Home for the Aged. This project, a ranch style structure to care for 40 residents was dedicated in 1960, at a cost of \$580,000. About ten years later, another addition was added to accommodate 42 more residents.

Food, Shelter, Clothes...

This community can go back to the original ideas of 1902, "to care for the sick and needy." We can be proud of our heritage. We have helped to create it.

The Jewish Federation of Delaware has been a supporter of the Kutz Home, in good times and in bad times for the Kutz Home.

The Community has not let the Kutz Home down. The Kutz Home has broken ground on a project that will cost about \$4 million.

The ground breaking was on Sunday afternoon, October 22, 1995. This is a 'dream come true' for many, many people, who have been involved for about 9 years, to see that it happens! There were surveys, there were plans, there was frustration, but it was worth it all!

The renovation and expansion will take about 2 years to complete. The Milton and Hattie Kutz Home will be Home to 90 Residents, in a beautiful newly renovated facility, that will be a 'State of the art' for the 21 century. You, the members of this community have made it happen.

You have given of your time, your energy, your dollars to continue a vision.

I hope you all attended the Ground-Breaking Ceremony on October 22, 1995, and that you will continue to visit the Kutz Home, and watch what is happening as the renovations take place. What a wonderful time to be a part of this Community. How lucky we are!



Joan Wachstein

As a high school kid, I volunteered at the Bichor Cholem on Washington Street. As an adult, I volunteer at the Kutz Home on River Road. As I kibitz with my friends, while we play Mah-Jong, we talk about taking the Mah-Jong set, and the steady game to the Kutz Home. We've discussed who will room with whom, in the later years of our lives. It's all planned! The game will continue! Food, Shelter, Clothes...

The basics of life for everyone, but sometimes some of us need assistance.

What a wonderful vision our ancestors had 94 years ago, and how lucky we are. Imagine a mission almost 100 years old, that still holds true today. What forethought our ancestors had!

How lucky we are to be able to continue in their footsteps, by following their goals.

Caring for our Jewish aged with the reverence they deserve.

Respect for age old traditions. Congratulations to all of us for caring.



From left to right, Ellen Levin, Edythe Rapkin and Lillian Kessler at the Kutz Home campaign Phone-A-Thon.

Kutz Phone-A-Thon Raises \$50,000

Over 30 enthusiastic volunteers gathered at MBNA headquarters on Sunday, September 10th making hundreds of telephone calls to potential contributors to the Kutz Home Capital Campaign. Lelaine and Stuart Nemser, Co-Chairs of the Phone-A-Thon, were please to an-

nounce that the efforts of the volunteers had raised \$50,000. Thank you letters were sent to contributors acknowledging their pledges and follow-up letters were sent to those who could not be reached by phone. The afternoon of September 10th proved to be both pleasant and productive.



News of the Weinberg grant made it a banner day for the Kutz Home.

LATE BITS

The following summaries are of late breaking stories and other items of interest. Much of these were not available at press time in a more substantial form. Other summaries here reflect current developments. These are adapted from what has been provided to The Jewish Voice from the Jewish Telegraphic Agency (JTA).

WASHINGTON — This week's vote to move the U.S. Embassy to Jerusalem marks the first time the United States has moved to recognize with the force of law a united Jerusalem as Israel's capital.

JERUSALEM — Legislation to move the U.S. Embassy in Israel is unlikely to have any immediate impact on the Israeli-Palestinian peace process.

JERUSALEM — Israel begins redeployment from Jenin, the first West Bank town to come under Palestinian authority as part of the latest Israeli-Palestinian accord.

DUSHANBE, Tajikistan — The 2,000-year-old Jewish community in this war-torn nation is moving toward extinction.

BERLIN — Germany's far-right Republican Party gained 2.7 percent

of the vote in Berlin state elections, below the total needed for parliamentary representation.

NEW YORK — Palestine Liberation Organization Chairman Yasser Arafat meets with a small delegation from the Conference of presidents of Major American Jewish Organizations, including the group's past chairman.

UNITED NATIONS — Diplomatic dealings abound as Israeli Prime Minister Yitzhak Rabin joins in the 50th anniversary celebration of the founding of the United Nations.

JERUSALEM — U.S. Trade Representative Mickey Kantor establishes a free-trade zone in areas under Palestinian self-rule.

JERUSALEM — Israel and China sign an agreement for cooperation on research.

JERUSALEM — Jonathan Pollard

petitions the High Court of Justice to grant him Israeli citizenship after the government rejects his request.

HANOVER, Germany — A new German Jewish group seeks ways to promote Jewish identity that does not revolve around the Holocaust and destruction.

JOHANNESBURG — As South Africans prepare for local elections, President Nelson Mandela urges Jews here to stay in the country.

VIENNA — The collapse of the government coalition in Austria opens the way for significant political gains for right-wing populist Jorg Haider.

WASHINGTON — Jewish groups and members of Congress urge Turkey to drop charges against American Jewish journalist Aliza Marcus, who is being prosecuted for a story she wrote.

Restaurants will be featuring *Thanksgiving*, and we'll be FEATURING Restaurants

IN OUR NOV. 10TH ISSUE. CALL IRV 427-2100 EX. 12

BRIEFS

NEWS & COMMENTARY



Washington, D.C. (October 19, 1995)— B'nai B'rith International President Tommy P. Baer presenting a symbolic check of \$515,000 to Sen. Don Nickles (OK), Rep. Frank Lucas (OK), Attorney General Janet Reno and Sun. James Inhofe (OK), Dr. Sidney Clearfield, executive vice-president of B'nai B'rith on right. The money was donated from more than 10,000 people of all faiths and ages to B'nai B'rith and has been allocated for many uses including to help victims' families, provide scholarships, build a memorial and repair churches. Photo by: Susan Levy.

Three Jews Among Nobel Prize Winners

LOS ANGELES (JTA) — Several Jews are among the winners of this year's Nobel Prizes. Joseph Rotblat, a British physicist and founder of the anti-nuclear group the Pugwash Conference, was the recipient of the Nobel Peace Prize. Rotblat, a native of Poland, participated in the Manhattan Project to build the world's first atomic bomb in the United States, but he left the project when he reportedly learned that its goal was to subdue the Soviet Union, not deter Nazi Germany. Rotblat was the only scientist to quit the project. Although Rotblat was born Jewish, he does not see himself as a member of any religion, he told the London Jewish Chronicle.

Two other Jewish scientists, based in California, were named co-winners of the Nobel Prize in physics. Frederick Reines, of the University of California at Irvine, was selected for his discovery in the 1950s of neutrinos, subatomic particles that are among the basic building blocks of nature. Reines is sharing the \$1 million Nobel Prize money with co-winner Martin Perl of Stanford University. Perl was recognized for his discovery of the tau lepton, another subatomic particle. The tau lepton is crucial to current theories of how nature's smallest particles behave.

U.N. Resolution On World War II Omits Any Reference To Holocaust

UNITED NATIONS (JTA) — The United Nations marked the 50th anniversary of the end of World War II with a resolution commemorating the "untold sorrows and ravages to mankind" wrought by the war, and "those who fought against dictatorship, oppression, racism and aggression." The resolution, sponsored by Russia and adopted by a consensus of the General Assembly, noted the "tens of millions of those who perished in their towns and villages, on the battlefields and in the death camps in a genocide." But the statement omitted any specific reference to the Holocaust, despite persistent efforts by Israel to include it, according to Israel's U.N. Ambassador Gad Yaacobi.

"This resolution does not mention the Holocaust, but I must," he said in a short but dramatic statement to the General Assembly immediately prior to the resolution's adoption. The ambassador said he must make specific reference to the Holocaust "for the six million whose voices have been forever silenced. For the Jewish people. For the state of Israel. And for future generations."

Israel, Jordan Forge More Ties

JERUSALEM (JTA) — As the date for an economic summit of Middle Eastern and North African leaders approaches, Israel and Jordan announced that they will present plans for joint projects at the meeting. The projects include development of the Jordan Rift Valley and other sites along the 400-mile Israeli-Jordanian border. The economic summit, which will bring together Israeli, American and Arab officials in the Jordanian capital of Amman for meetings starting Oct. 29, follows up on a similar meeting held last year in Casablanca, Morocco. One of the goals of the conference is to raise funds for joint regional projects.

In recent years, Israeli and American officials said that plans for the establishment of two banking institutions to develop the Middle East will be announced at the Amman summit. One of the institutions, to be based in Cairo, would reportedly be created along the lines of the regional development bank that American officials have long sought. The second institution would operate under the auspices of an economic working group established at Casablanca last year.

Vote On U.S. Embassy Signals Official Backing Of United Jerusalem

By MATTHEW DORF

WASHINGTON (JTA) — This week's congressional vote to move the U.S. Embassy in Israel from Tel Aviv to Jerusalem marks the first time the United States has moved to recognize with the force of law a united Jerusalem as Israel's capital.

The legislation, which came on the eve of official festivities here to celebrate Jerusalem 3000, was greeted with cheers by Israel and most American Jewish groups and with condemnation by the Palestinians. Despite Israeli sovereignty over its capital, the Palestinians seek eastern Jerusalem as the capital of a hoped-for future state.

With overwhelming bipartisan support, the Senate passed a bill Tuesday by a vote of 93-5 that requires the State Department to move the embassy by May 31, 1999. The House of Representatives voted to pass the Jerusalem Embassy legislation in time for Israeli Prime Minister Yitzhak Rabin's visit to the Capitol on Wednesday to celebrate Jerusalem 3000. The vote was 374-37, with 5 abstentions.

Aiming to win the support of the

administration and lawmakers who were concerned that the move could disrupt the peace process at an especially critical time, sponsors of the measure agreed to allow the president to postpone the move by renewable six-month intervals.

President Clinton is expected to sign the legislation, although his administration was clearly not happy with the congressional act. Robert Pelletreau, assistant secretary of state for Near East Affairs, accused Congress of trying to "undercut" the Declaration of Principles signed by Israel and the Palestine Liberation Organization two years ago.

"This is not the appropriate time to be considering this legislation when we are making such dramatic progress in the peace process," he told reporters here Wednesday. "The focus should be on the peace process and we should not be engaging in any action which would harm the peace process."

El Salvador and Costa Rica are the only countries that maintain embassies in Jerusalem.

Israeli Foreign Minister Shimon Peres welcomed the move. "We ap-

preciate very much the act that was taken by the American Congress," Peres said. "If there is one issue that Israel is united around it is united Jerusalem, as the capital of Israel."

Prime Minister Yitzhak Rabin concurred. "Jerusalem is our eternal capital," he told reporters during his visit to New York, adding that he welcomed the Senate move.

But Faisal Husseini, the PLO's top official in Jerusalem, condemned the move, saying that it could harm Israeli-Arab peace efforts. He reportedly said the United States had promised the Palestinians it would not take any steps that could affect the final status of Jerusalem.

In fact, the final version of the measure, sponsored by Senate Majority Leader Bob Dole (R-Kan.), dropped a controversial provision that would have required groundbreaking on a Jerusalem embassy site in 1996. Palestinian and Israeli negotiators are scheduled to complete talks on the final status of Jerusalem in 1999.

The congressional votes end a

Continued on page 3

Harry Truman - Was He Good For The Jews?

By STEVE COHEN

Special to The Jewish Voice

Among American presidents, Harry Truman now holds high rank in public opinion. In particular he's regarded as "a friend to the Jewish people."

A conversion of opinion about Franklin Roosevelt took place shortly after his death. Here we are four decades after the end of the Truman presidency and a needed reassessment of his record is overdue.

It's difficult for me, because Truman was one of my boyhood idols. But a clear-eyed look at the record shows that his record had plenty of warts. On the whole, he usually made good decisions after verbalizing some narrow, contradictory opinions.

Truman rose from a family background that had no tolerance for blacks or Jews, and his diary shows that he made unfavorable references to both. Yet he supported legislation to greatly increase Negro rights. He favored a Fair Employment Practices Commission which provided more jobs for blacks and Jews. And he proposed educational and health legislation which the Jewish community favored.

After World War II he became sympathetic to the Jews of Europe who looked to Palestine as a haven and he asked Britain to allow more refugees into the Holy Land. But British Foreign Minister Bevin said that Truman only said that because he didn't want all of Europe's Jews to move to the United States.

In 1947 President Truman supported a UN proposal for partition of Palestine. But in March 1948 Truman's appointee to the UN, Warren Austin, publicly proposed supervision of Palestine by the big powers, instead of partition. Truman con-

tinued to flip flop on this issue. At the last minute, Truman supported independence, talked several other nations into supporting it, and granted Israel official recognition.

The Soviet Union also recognized Israel, and skeptics say that Truman's action was mainly to oppose Soviet dominance in the Mid-East. My former neighbor, US Senator Hugh Scott, told me that Truman's action was a bid for Jewish votes in an election year.

Jews from that era say that Truman's recognition was an act of courage, because it was against the wishes of the Arab oil-producing countries. Whatever the reasons, Truman's decision gave him immortal status in Jewish history.

Speaking with Jews who were politically involved then, I repeatedly heard: "It was reassuring to know that Truman had a Jewish business partner."

Marion Wilen, former chairperson of the Philadelphia Jewish Community Relations Council, says that Jews in the 1940's clutched at straws. They had low expectations of national leaders.

Truman did have a former business partner who was Jewish, named Ed Jacobson. Because Jacobson wasn't personally a supporter of Zionism, and because Truman's advisers warned Jacobson not to discuss such matters, he never did so directly. But in early 1948, the president of B'nai Brith convinced Jacobson to use his friendship with Truman to try to arrange a White House audience for Chaim Weizmann. Jacobson told Truman how much this would mean to the Jewish people, and the president agreed to see the Zionist leader. At that meeting, Truman promised Weizmann that he would support an independent Jewish state in Palestine.

Truman did not follow through by providing finances. This was at a time when the US was pouring aid into Western Europe with the Marshall Plan, and the president said there wasn't enough money to do the same for Israel.

Often there were feuds within the administration. Clark Clifford was one of the good guys, a supporter of Israel, but the president didn't always heed Clifford's advice. "Clifford has gone prima donna on me. It's hell...I get a headache over it," Truman wrote in his diary.

Many of Truman's appointees to the Supreme Court were hacks, says Gloria Cohen, political science professor at Bloomsburg University and a writer about Jewish issues. But she points out that Truman's close friend Fred Vinson, as Chief Justice, wrote a 1948 decision (Kraemer vs. Shelley) that overturned religiously and racially restrictive real estate covenants. Whether by accident or by instinct, Truman's pal struck an early blow for minority rights.

It's important to remember that, in those days, Negro interests and Jewish interests were allied. Policies that gave more rights to blacks were considered to be equally helpful to Jews.

In most of his speeches, Truman appealed "for the welfare of all the people and not just a few" and that's how he's fondly remembered — as a common man, who rose from a humble background, a regular guy who was one of the people.

Harry Truman was far from a saint, if you'll pardon the expression. It's interesting that Jewish culture has no synonym for sainthood. Our leaders from biblical times had faults and flaws. We don't expect human perfection. Truman and his presidency were flawed, and his flaws helped make him a fascinating man.

Remember The Strangers For You Were Once Strangers

Relations between African Americans and Jewish Americans in Delaware are good. The commercial media focuses on conflicts in New York, Los Angeles and Chicago that are not typical of what is happening in much of the rest of the nation. These two groups have found common cause on a variety of political causes and social concerns over a period of decades. There are numerous dialogues between African American and Jewish American groups throughout the country.

It is against this backdrop that we comment on one of the most prominent news stories in recent weeks. Hundreds of thousands of African American men came together on October 16 for the national equivalent of a male only African American family reunion with the express purposes of self-examination, commitment to values, and to draw attention to their plight. Compared to the rest of the US population, Black males are less employed, have fewer economic opportunities, are more likely to be incarcerated, have shorter life expectan-

cies, suffer greater medical risks and have less traditional family structures. These facts represent a challenge for all Americans to correct injustices, and to change these deplorable circumstances. Although Jewish Americans have not been perfect we have, to a disproportionately large extent, worked as individuals and in groups, on the charitable level and on the political level, to better the lives of African Americans. Jewish Americans can, should, and will do more to work with our fellow Americans to make this a better world for all. The return of the Jewish Federation of Delaware to downtown Wilmington is a clear signal of our commitment to make a positive difference in urban matters.

The goals of the October 16 Million Man March were lauded by many Jewish organizations and individuals who support the messages of self reliance, hard work, responsibility and family unity. Many Jewish Americans, and others, have disagreed with our friends in the

African American community over the inclusion of Louis Farrakhan in the March and his opportunistic self-promotion through that event. It is not our place to tell our neighbors who their leaders should be and we do not do so here. We can not however ignore the numerous, frequent, false and hateful anti-Semitic statements of Louis Farrakhan. He should be disavowed by all Americans regardless of whether his tainted message contains some otherwise meritorious words about self-reliance, dignity or family values. Farrakhan's anti-Semitic, anti-Catholic, sexist, anti-White and separatist statements are sufficiently abhorrent that no matter what else he has to say he should be deplored. As Jews we find a value in Emet, truth, and that truth was found lacking by the American Historical Society in Farrakhan's distorted, false, statements which suggested a substantial involvement by Jews

in the slave trade (sic) when in fact the role of Jews in the slave trade was very little. Farrakhan's anti-Semitic rantings have been criticized in whole or in part by General Colin Powell, Hugh Price of the Urban League, leaders of the NAACP, and, albeit seemingly reluctantly, by the Rev. Jesse Jackson, among others. Such criticism seems a good start. The demagogue who a week earlier had referred to Jews as "bloodsuckers" (sic) will find with us no dialogue partner so long as he continues such statements without disavowal.

Putting that aside there continues to be much common ground between African Americans and Jewish Americans. There is much to admire in the men who went to Washington to commit themselves to positive actions. We continue to hold out our hand of brotherhood and friendship wherever we can come together on issues of common concern.



Stevie Wonder, shown here after a recent EL AL Israel Airlines flight from Los Angeles to Tel Aviv, was among the speakers at the Million Man March. At the march Wonder reportedly emphasized that the event had no one leader. In this photo Wonder is shown receiving flowers from the children of Jewish immigrants from Ethiopia and the former Soviet Union who are El Al employees.

THURSDAY NOON DEADLINE
for all articles, advertisements and news for The Jewish Voice

DEADLINE	FOCUS	ISSUE
Nov. 2	Restaurant Guide	Nov. 10
Nov. 22 (Wednesday)	Holiday Preview	Dec. 1
Dec. 7	Hanukkah Issue	Dec. 15
Dec. 21	Party Guide/ Camp Issue	Dec. 29

12 NOON THURSDAY
EIGHT DAYS BEFORE PUBLICATION

12 NOON THURSDAY
EIGHT DAYS BEFORE PUBLICATION

All submissions for The Jewish Voice
due at JFD offices -
100 W. 10th St., Suite 301, Wilmington, DE 19801

The JEWISH VOICE

Published semimonthly, and monthly in July and August, by the Jewish Federation of Delaware.

Daniel H. Weintraub, Esq., **Editor**
Irv Epstein, **Advertising Manager**
Judy Wortman, **Executive Vice-President**
Jewish Federation of Delaware

Staff
Tillie Epstein, **Advertising Assistant**
Freelancers
Steve Cohen, **Entertainment Reporter**

Priscilla Siegel, **Community Reporter**

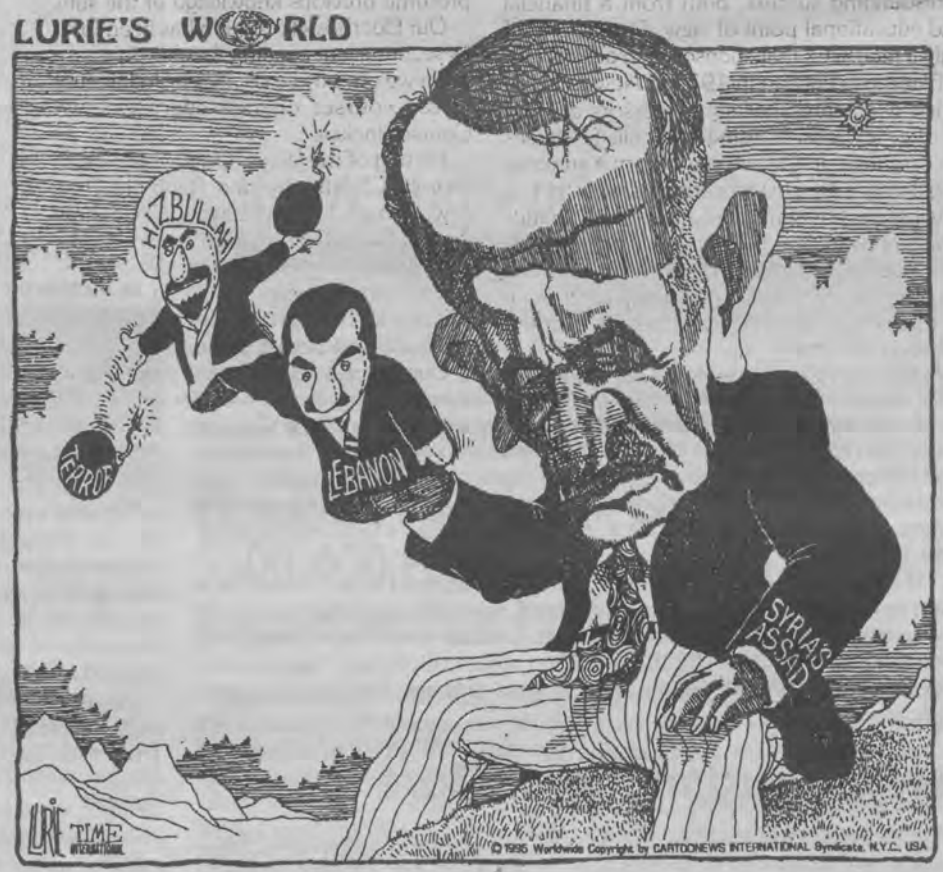
Editorial Committee:
Barbara S. Keil, **Chair**; Marvin Cytron, Terry Dannemann, Matt Denn, Irving Kaufman, Connie Kreshtool, Ellen S. Meyer, Dov Seidel.

Business Committee:
Suzanne Grant, **Chair**; Mark Levitt, David Rosenblatt, Dale Rosenthal, Michael Schwartz, Lawrence I. Zutz.

Editorial opinions expressed in this newspaper are those of the newspaper and not those of any individual or other organization. Signed editorials and letters do not represent the view of the newspaper, but rather express the view of the writer. No material will be accepted by The Jewish Voice which is considered against the best interests of the Jewish community. The Jewish Voice does not guarantee the kashruth of any of its advertisers. Printed material and video tapes sold by our advertisers have not been reviewed by the Jewish Voice, nor are they endorsed in any way by the Jewish Voice.

Member of the American Jewish Press Association and Jewish Telegraphic Agency.
©1995 The Jewish Voice Printed by Dover Post Company

Second class postage paid for The Jewish Voice (USPS-704160) at Wilmington, Delaware. Subscription price: \$10.00. Circulation: 3,200. Mailed to subscribers and contributors to the Jewish Federation of Delaware. POSTMASTER: Send address changes to The Jewish Voice, 100 W. 10th Street, Suite 301, Wilmington, DE 19801. (302) 427-2100. The FAX number of The Jewish Voice is (302) 427-2438. E-Mail #jewishvoic@aol.com, #jewishvoic@mcimail.com or 7056105@mcimail.com



**When The Population
Survey Calls,
Please Answer The Phone**

OPINION

Do You Get A Feeling Of Pride?

By CAS ANOLICK

Special to *The Jewish Voice*

Many things have happened which should make you proud. You, yes, you. You are reading this so the chances are very high that you have some interest in the Jewish Federation, and that you contribute to its campaign. No it is not that time of year again, and this is not a request for money. As I write this, Rosh Hashonah is fast approaching and I think back on a year as I saw it and I wonder if you are as proud as I. Here is why.

First there was a successful campaign. Unfortunately it is not yet complete, but it will be. To accomplish this it took many people from amongst our community. About 90 people contributed a few hours of their time to work on Super Sunday. They contacted about 1000 people. About 40 dedicated souls spent many more hours in person or on the phone contacting another 500 or so people, and there are more contacts still being made. And by the way it is not easy work. It is strange, we are all the same, every time I call someone I am nervous and have to work up the courage. Yet everytime I get the same sense of satisfaction. The campaign would not be a community campaign if we did it all by mail or through some other impersonal mode. These

hundreds of contacts are a part of our community pulse.

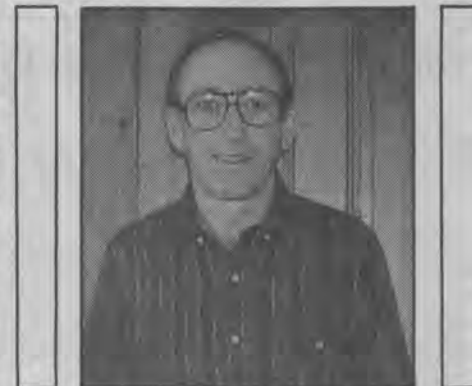
Then we should be proud of the dedication in the allocation process. No-one thinks it is perfect, but everyone agrees it is important. Every agency gets a hearing, and every agency deserves more support. And the debate goes on. But look at what is accomplished Did you realize how University of Delaware's Hillel has grown because of your support. Or how Einstein Academy has expanded. Or how many children who could not otherwise afford to go, were given scholarship to JCC Camp. And Oh yes my favourite for this year. Did you realize that some little piece of your contribution went through our international effort to relieve a little of the suffering in Sarajevo? It did not stop the war but at least you can feel you made it a little less hurtful.

But here is some food for thought. Contributions to Israel from the whole of the USA has risen steadily over the last ten years. However almost all the increase has come from non traditional sources. According to the latest Jerusalem Report the "national institutions" like the Jewish Agency and the JNF which we support, are getting about \$425 million com-

pared to \$400 million ten years ago, while the smaller bodies like universities, hospitals and museums, are getting \$675 million now compared to \$175 million only ten years ago. It seems many donors like to support a small charity where they can see the results directly. So the debate should start. Are we missing something about where our community wants to contribute its charity dollars? If we are, the Jerusalem Report's concern about what will happen in the next twenty years is a valid one. I personally think that supporting Jewish Immigration is a number one objective, since it is our final safety net. However I do think we are failing to see the whites of their eyes. We talk about the dollar numbers, but the immigrant is a person with an empty stomach and no job. Your dollars help. Think about that and feel your pride in what you are doing.

A recent New York Times article describes Steven Spielberg's numerous contributions to charities, almost all Jewish. The fact that he gives mostly to his carefully selected charities and not the National Institutions, should worry us not at all. They are Jewish charities of obvious merit. The Federation is also trying to open its allocation to New Initiatives, without hindering the older institutions.

The Jerusalem Report article expresses another concern. The average age of donors is going up steadily so they worry that the



younger generation is less dedicated, and will not grow to contribute the same as their elders. Here they express something many people feel, but cannot prove. Maybe it is indeed true, and I agree it could easily happen. But here too it is a matter of learning from seeing the whites of their eyes. If the younger generation sees what has been accomplished and see it as something of which to be proud, then they too will want to build a charitable community. If we present a sterile community they will walk away. Do they know about the people at the Kutz Home or the generations of immigrants we have helped world wide? If not tell them, and tell them with justified pride. Then the next generation will be proud to join!

Elderhostelers Consider The JCC A Hidden Treasure

By NATHAN BARNETT

Special to *The Jewish Voice*

During the past year and a half, the JCC has sponsored twelve Elderhostel programs and will hold its thirteenth and fourteenth on October 23rd and November 6th. It has been a resounding success, both from a financial and educational point of view. Ours is one of only a few JCCs that sponsor such a program.

Elderhostel began in 1975 in New England when two retired college professors decided to offer low cost housing and college classes on campuses in the summer. From a summer beginning with 200 students Elderhostel has developed year-round program opportunities which register 200,000 people a year, worldwide. About 25% of all Elderhostelers are Jewish. Great excitement is generated each week as friendships are made and people become involved with the group.

Elderhostel is a network of over 1800 colleges, universities, and other educational institutions or groups with facilities like the JCC that offer low cost, short term (usually one week) programs for groups of 20-50 people over the age of 55. Our oldest participant at the JCC to date was a very bright 97 year old. Our program begins on a Monday and ends on a Sunday.

The participants are housed in residential facilities and take their meals in the local dining hall. Our Elderhostelers are housed at the Holiday Inn (almost 52% of Elderhostelers are now in hotels) and have all 17 meals at the JCC. There are only a handful of Elderhostel

sites in the United States that offer Kosher meals. Participating institutions design their own program, in accordance with Elderhostel format and guidelines, offering college level liberal arts courses on a non-credit basis with no homework or testing. The courses do not presume previous knowledge of the subject.

Our Elderhostel program has been fortunate in securing outstanding faculty. In each program we offer three courses in Judaic subjects. These courses change every two weeks. Courses include:

Parting of the Ways, Origins and Early History of Christianity and Rabbinic Judaism; Jewish Impact on Broadway; American Law/Jewish Law; The Shtetl in America; Modern Anti-Semitism; Jesus and his Jewishness; Judaism, Sex and Sexuality; Liturgical Music; Change and Continuity in America; and Eastern European Jewish History.

Our Elderhostel is somewhat unusual in that it has almost all Jews in the group. Almost 80% of the participants come from New York, Pennsylvania and New Jersey. The remaining 20% come from the rest of the country.

Many of the Elderhostelers go to more than 5 Elderhostels a year. Three Elderhostel couples have returned at least twice to our institution.

A significant portion of adult Jewish education is taking place in Jewish Elderhostel sites that have not been widely recognized by the institutional Jewish community. There is a hunger, a nostalgia, a desire to know more about their "roots", and they are "getting" it in a relaxed, totally acceptable environment. The range of knowledge of the participants is from highly Jewish educated, to those who have no Judaic background whatsoever. All, however, learn and enjoy.

I wish members of our Jewish Community could talk to the people who visit the JCC and hear their remarks. These people look at the Center with fresh eyes, and have not had 25 years with our JCC available to them. They are at the Center from 7:45 a.m. until 10:30 p.m., so they see various JCC programs that many in our community rarely see. They see the nursery, children in preschool, and kids in camp, depending on the season. They see the seniors having lunch and join them for a Candlelight Dinner. They watch the children meet in the lobby on Friday for a Kabbalat

Shabbat. They observe the gym, busy with basketball, and the lap swimmers in the indoor pool. They gasp amazed at the spacious grounds of the Center as they walk around the campus. They say, "You don't know how lucky you are to have such a wonderful campus."

Each group, when they leave, fill out an evaluation sheet regarding the accommodations, the food, facility, staff, etc. The following are typical of the comments that we always receive.

- "I have seen YMHA's and JCC's, but never one as attractive and well cared for as yours."
- "Having lectures and meals at the JCC separate from the Holiday Inn is wonderful."
- "Most people eat ("kinahora") like they were hungry from years in the wilderness."
- "Music program (was) exceptional and very enjoyable."
- "I have been to previous Elderhostels with very good planning and programs. However, due to staff, this has been a superb experi-

ence."

- "The facilities, course content and instructors were superlative."
- "I would recommend this Elderhostel even to my brothers."
- "This was my first Elderhostel and I was not sure whether I would enjoy the program. I have enjoyed everything here."
- "The Shabbat program was exceptional."
- "Bravo to the entire team that made this wonderful."

As the coordinator of the program, I have found it a very satisfying experience. People come to the program as individuals. During the week it is gratifying to see the group meshing, making friends and joining in a Shabbat evening service and Saturday morning service that includes all who wish to actually participate in the service. Our crowning achievement is that everyone writes that they would recommend our program to their friends.

(Nate Barnett coordinates the Elderhostel program at the JCC in Wilmington.)

A Religious Reformation In Israel?

By MARVIN S. CYTRON

Member of *The Jewish Voice* Editorial Committee

A recent New York Times article early this month reported another political storm in Israel, this country of seemingly constant political eruptions, on the issue of religious education in the secular schools. Historically the Education Ministry and matters relating to religion were allocated to the religious parties of the particular coalition government in power. A recent blue ribbon panel proclaimed that Jewish studies were unpopular and the current Minister of Education has responded with a program to liberalize and enhance Jewish studies. The report quoted the Minister of Education, Amnon Rubinstein, in explaining his proposal as follows: "I want our children, and grandchildren and great-grandchildren to remain Jewish in Israel. To do that, we must show that they can count on being Jewish without being Orthodox". "Increasingly, Israeli teenagers identify themselves as Israelis, not Jews", the article quoted an orthodox rabbi of the liberal Shalom Hartman Institute. The main conclusion of the hotly debated report was that Jewish studies must be freed from Orthodox

limitations. "Judaism is too valuable to be left to the Orthodox" declared Mr. Rubinstein.

Religious life in Israel has been the monopoly of the Orthodox minority since the founding of the State. Life events; from marriages, bar/bat mitzvahs to funerals have been in the control of the Orthodox Rabbinate for nearly fifty years even decisions as to who is a Jew is in their purview. A new era of religious liberty may be on the horizon for Israel if Mr. Rubinstein's proposal becomes a reality. This issue will no doubt precipitate much debate and acrimony throughout the country.

Since before the founding of the State of Israel, Jews in the United States have provided enormous economic, political, industrial and technical know how and to a lesser degree American Jews making aliyah to "The Land Of Milk And Honey". Most recently Israel has imported from America that most American commodity; McDonald's Hamburger, both kosher and non-kosher. Perhaps there is one more item we can provide to our co-religionists in Israel and that is our example of Religious liberty. In the "goldenah medina" American Jews; Orthodox, Conservative, Reform, Traditional, Liberal, Reconstructionist, Progressive, Gay, Lesbian, secular, gastronomic, etc. have learned to live, work play, and sometimes even pray together.

We are not always in complete harmony, but we do respect each group's religious liberty. This is a far more valuable "import" for Israel than the ubiquitous "Big Mac".



Rabbi Harold Schulweis To Speak In Wilmington

Rabbi Harold Schulweis, author, educator and Rabbi of Congregation Valley Beth Shalom, Encino, California will speak at Wilmington's Congregation Beth Shalom on Monday

November 20. Rabbi Schulweis a graduate of Yeshiva College (BA), New York University (MA) and The Jewish Theological Seminary (MHL.) will discuss his recent book FOR

THOSE WHO CAN'T BELIEVE: OVERCOMING THE OBSTACLES TO FAITH. Rabbi Schulweis has served in a number of academic and literary positions throughout the country and has been the Rabbi at Valley Beth Shalom since 1970. He is the recipient of numerous honors and awards including Doctor of Humane Letters, Honoris Causa from The Jewish Theological Seminary, Hebrew Union College and the University of Judaism. He is also the recipient of the Israel Prime Minister's Medal. Rabbi Schulweis is the founding chairman of Jewish Foundation of Christian Rescuers, an organization that identifies and offers grants to those non-Jews who saved Jews threatened by the agents of Nazi Savagery.

In a message about his book FOR THOSE WHO CAN'T BELIEVE Rabbi Schulweis writes: "I wrote this book in response to the pervasive and reiterated complaints of people with the boredom and irrelevance of their religious and synagogue experience. The tradition is taught mechanically without regard to the philosophy and poetry that underlie the belief and practice of faith...."

The Wilmington visit by Rabbi Schulweis is sponsored by the Kraft Educational Foundation of Congregation Beth Shalom and the community is welcomed to this event.



Rabbi Harold Schulweis

The Foundation is dedicated to the memory of the late Jacob Kraft, Rabbi Emeritus of Congregation Beth Shalom and brings to the Jewish Community lectures by noted rabbis, authors, educators, and speakers to enhance Jewish values, traditions and knowledge.

The program will begin with a sponsor dinner at 6:00 P.M. and Rabbi Schulweis will speak at 7:30 P.M. Reservations for the Sponsor dinner can be made by calling the Synagogue office 654-4462. There is no charge for the lecture by Rabbi Schulweis.

Dr. Jack Fishel Is Beth Emeth's Rosenthal Jewish Book Month

Congregation Beth Emeth invites the community to Shabbat services on Friday, November 17 at 8 p.m. when De. Jack Fischel will speak on the subject, "American-Jewish Jewish-American: The Question of Identity in American Literature." Dr. Fischel will be the Rosenthal Jewish Book Month lecturer, an annual program established by Mr. and Mrs. Murray Rosenthal and Miss Claire Rosenthal to encourage the reading of Jewish books.

Dr. Fischel is the chairperson of the Department of History at Millersville (PA) University. He received his Ph.D. from the University of Delaware and for the past thirty years has been on the faculty of Millersville University. The recipient of numerous awards and honors, Dr. Fischel is a columnist for the National Jewish Post and Opinion writing "About Books" on a weekly basis. He lectures extensively on topics concerning American History, Hitler and Nazi Germany and Israel and the Middle East among many others.

Professor Fischel will be speaking during Shabbat evening worship and we encourage you to join us as we mark Jewish Book Month.

We have an **Ear** for value

<p>7B05) 14kt. gold hanging faux pearl pierced earrings *CompVal \$84.50 Our Price \$44.98</p> 	<p>7B06) 14kt. gold diamond hugs and kisses pierced earrings *CompVal \$85.00 Our Price \$44.98</p> 
<p>Your Choice \$44.98 Values to \$100.00</p>	
<p>7B07) 14kt. gold wedding-band style hoop pierced earrings *CompVal \$100.00 Our Price \$44.98</p> 	<p>7B08) 14kt. gold diamond-cut hoop pierced earrings *CompVal \$95.00 Our Price \$44.98</p> 
<p>7B09) 14kt. gold diamond-cut hoop pierced earrings *CompVal \$100.00 Our Price \$44.98</p> 	

HARRIS HARRIS JEWELERS

4377 KIRKWOOD PLAZA KIRKWOOD HIGHWAY
OPEN MON. THRU FRI. 10AM TO 9PM
SAT. 10AM TO 6PM • 999-9901

BRANMAR PLAZA MARSH & SILVERSIDE ROADS
OPEN MON. THRU FRI. 10AM TO 9PM
SAT. 10AM TO 6PM • 475-3101

410 EDEN CIRCLE EDEN SQUARE
OPEN MON. THRU FRI. 10AM TO 9PM
SAT. 10AM TO 6PM • 836-9745

NCJW Estate Planning Program Making the Most of Your Assets

On Sunday, November 12, 1995 attend a financial seminar hosted by National Council of Jewish Women at the home of Shelly Mand, 618 Berwick Road, Edenridge.

Brunch will be served at 10:00 a.m. followed by guest lecturer Eileen Conner, C.P.A. moderating a discussion on financial planning. Learn how to create a living trust, Medicare insurance, saving versus invest-

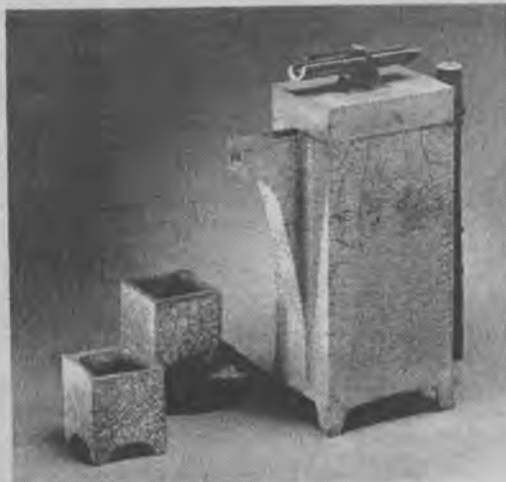
ing, what are your savings for and where to keep your money.

Eileen is E.P.A. with a local accounting firm and serves as the treasurer of Gratz Hebrew High School and volunteers as president of the board at the Milton and Hattie Kutz Home. She is on the board of trustees of the Jewish Federation of Delaware.

For information and reservations call 478-0890.

Writers, Proof-readers and Interns needed.
If interested call
Dan at
(302) 427-2100

POTTERY EXHIBITION by Dina Angel-Wing



Raku cups, teapots, containers and Mixed Media Sculpture with Ikebana flower arrangements by Midori Tanimune

Friday, October 27, and Saturday, October 28, 11:00 am to 4:00 pm

A TOUCH OF THE ORIENT



Garrett Snuff Mills, Yorklyn, DE Phone (302) 239-4636



JUDY LEVY

EILEEN SCHWARTZ

The First Ladies of Real Estate*



2509 Lori Lane North, Tarleton - \$169,900

Fabulous curb appeal with a spectacular rear wooded lot. An ideal 4 bedroom, 2.5 bath home for a growing family. NEW. Hotline #5645

1898 Beechwood Drive, Westwood Manor - \$177,900

Large sprawling ranch house with 4 bedrooms, 3 full baths, skylight, stone fireplace and a very open floor plan. Hotline #5599

Way Ridge Lot 25, Greenville - \$589,900

Elegant stucco home by master builder, Wayne Megill, on a 2 acre parcel with an amazing 4500 square feet of living space with front and back staircase, gourmet kitchen, sun room, and more! Hotline #3136



*Ranking in the TOP FIVE PERCENT of all RESIDENTIAL AGENTS IN THE NATION.

Call **429-7379**

Judge Aida Wasserstein Natan At Hadassah Joins Family Court

By DAN WEINTRAUB

Editor of The Jewish Voice

"An historic day" is what several speakers called the Ceremony of Investiture which saw the Honorable Aida Wasserstein ascend the bench as an Associate Judge of the Family Court of the State of Delaware in and for New Castle County. On October 20, the Cuban born Wasserstein became the first Hispanic American to be sworn in as a Judge in the State of Delaware. In her remarks, Wasserstein spoke of her Latino and Jewish traditions. She noted the Jewish tradition of remembering sadness in the midst of great joy. On what was obviously a day of great joy she gave the examples of the Jewish practices of recounting the plagues during the Passover seder and breaking a glass during a wedding ceremony. Wasserstein referred directly to important family members and alluded to what other speakers that day referred to as her struggles and personal triumphs.

Rabbi Sanford Dresin, spiritual leader of Adas Kodesch Shel Emeth, was invited by Wasserstein to lead the benediction at the ceremony. Remarks were made by State and Federal Judges as well as the Governor.

Prior to Governor Thomas R.



Judge Aida Wasserstein

Carper's appointment of Wasserstein, and her unanimous confirmation of the Delaware Senate, she served as a partner in the law firm of Wasserstein and Demsey. Judge Wasserstein was previously an associate with Bader, Dorsey and Kreshtool, and a partner at Kreshtool, Wier, and Wasserstein. She was formerly the Chairperson of the Delaware Human Relations Commission. Among her prior associations is included serving as a member of Westside Health Services, parent and Community Bilingual Education Council, Board of the Visiting Nurses Association and the Advisory Committee on Puerto Rican Affairs and on Education to the American Friends Service Committee's Community Relations Division.

Hadassah Meeting

Haddassah National Board Member, Marcie Natan will speak at the Wilmington Chapter of Hadassah's Paid-Up Membership Dinner Meeting, on Monday evening November 6, 1995 at the Italian Bistro Restaurant in Branmar Plaza. Dinner begins at 6:00 p.m. with dessert at 7:00 p.m. and the meeting starts at 7:30 p.m.

Marcie Natan of Lancaster, Pa. is the National Organization Department Chairperson in the Unit Services and Support Division. She is

the immediate Past President's Training Chairperson and Greater Metropolitan Area Liaison, as well as a Past President of the Eastern Pennsylvania Region. Marcie served as a member of the Lancaster Presidium and has been a member of Hadassah for 27 years.

Marcie is involved in many Jewish and Community Services. She has served on the Boards of The Lancaster Jewish Federation and the Sisterhood of Temple Beth El. She has taught both Hebrew School and Sunday School. Presently, she is the President of Temple Beth El and serves as a mediator for the Lancaster Mediation Center.

Marcie has a B.S. Degree in Early Childhood Education from the University of Maryland and currently works with her husband in his business. Marcie is a three generation



Marcie Natan

Life Member of Hadassah. She is the mother of two children, Heidi and David and wife of Eli.

For more information about this evening call Michelle Sands at 478-6391 or Joan Lubitz at 762-2709.

Leader Long Term Care Insurance Fair on November 21

Leader Nursing & Rehabilitation Center will host a "long term care insurance fair" at 700 Foulk Road in Wilmington, on November 21 from 9 to 11 in the morning.

Donna Williams, insurance commissioner for the state of Delaware will speak. She will discuss her office's work in approving licensure for long term care insurance providers. After her presentation, attendees will have the opportunity to meet

with representatives from the following companies:

Amex Life Assurance Company, Blue Cross/Blue Shield of Delaware, New York Life Insurance, Jarab Incorporated/Broker.

This program is free and open to the community. For more information on this timely program or to RSVP, please call 302-764-0181 from 9 a.m. to 7 p.m. daily.

Captain's Deck Honors Two

Captain's Deck Retirement Community announces Catherine Togba and Lorine Wynter as the September Employees of the Month. Both share this honor based on service and dedication to their respective assignments. Catherine is a Dietary Aide within the Food Services Department and Lorine has served as a Certified Nursing Assistant in our Health Services Department for over one year.



BERGER BROS INC.

OFFICE FURNITURE
— OFFICE SYSTEMS



Partial Listing of Items We Carry—For Home or Office

• DESKS	• FOLDING CHAIRS	• OFFICE SUPPLIES	• BOOKCASES
• CHAIRS	• & TABLES (SALE OR RENTAL)	• LAMPS	• STEP STOOLS
• FILES	• LEATHER	• LATERAL FILES	• RECEPTION SEATING
• SAFES	• FURNITURE	• INSULATED FILES	• STORAGE CABINETS
• STEEL SHELVING	• TABLES, CONFERENCE	• BUSINESS	• COAT AND HAT
• LOCKERS	• TABLES, COMPUTER	• MACHINES	• HANGERS
• DRAFTING	• ROLL TOP DESKS	• CHALK BOARDS	• CHAIR MATS
• EQUIPMENT	• PANELS, ACOUSTICAL	• BULLETIN BOARDS	• ATTACHÉ CASES

Call (302) 655-7166



BERGER BROS INC.


Since 1919
Market at Third Sts., Wilm., DE
Hours: 8:00 to 5:30 Sat. 8:30 to 12:00

TOP WASHINGTON REASONS TO
RESERVE YOUR
PLACE NOW

10. YOU'LL FINALLY BE IN ON ALL THOSE INSIDE-THE-BELTWAY JOKES.
9. WE WON'T BUMP CLINTON TO MAKE SPACE FOR YOU.
8. WE'RE ORDERING THE FOOD NEXT THURSDAY.
7. RABIN NEEDS JUST ONE MORE OPINION ON THE PEACE PROCESS.
6. SAY "YES" NOW AND WE'LL LEAVE YOU ALONE UNTIL MARCH 1ST.
5. THERE'S NO \$3.00 SERVICE CHARGE.
5. THE FIRST SEVEN DAVID COHENS GET A FREE MAP OF WASHINGTON.
3. THERE'LL BE MORE THAN THE IRS TO LOOK FORWARD TO IN THE SPRING.
2. IT'S THE WEEK BETWEEN THE FINAL FOUR AND THE NBA PLAYOFFS.
1. THE PARTY WON'T BE THE SAME WITHOUT YOU.

UNITED JEWISH APPEAL YOUNG LEADERSHIP CABINET
10TH NATIONAL WASHINGTON CONFERENCE MARCH 17-19, 1996
CAPITAL-TO CAPITAL: JOURNEY TO JERUSALEM (OPTIONAL) MARCH 19-24, 1996

We've got a lot in common. From late night television hosts to Jewish commitment. Join 3,000 people, ages 25 to 45, in the world's largest gathering of Jewish leadership. Learn the facts behind the issues. Speak to the scholars. Meet with your Congressional leaders. Then travel on an optional trip to Israel to celebrate Jerusalem's 3000th birthday.

Call  427-2100 - Ext. 16
ask for Lelaine Nemser.



Marvin Balick Creates A Family History To Remember Immigrant Dedication To Education and Effort

By DAN WEINTRAUB
Editor of *The Jewish Voice*

Earlier this year Marvin Balick, a retired school principal, completed a booklet entitled "The Balick Family of Delaware 1890-1995." This local family history, full of photographs and commentary, is now on file with the Jewish Historical Society Of Delaware. "This book is one unique example of the important of community and family history," says Julian H. Preisler, Archivist for the Jewish Historical Society of Delaware. "We hope to receive many more family genealogies and histories such as this one," Preisler told *The Jewish Voice*.

Marvin Balick told *The Jewish Voice* that as the last of his family's generation of immigrants is now gone, with the passing of the last one earlier this year, and his own generation is getting older, that his family history was particularly timely. Balick said that those in his family born in the 1920's and 1930's had the responsibility to connect the generations of the Balick family. He spoke of the earlier generation of immigrants who had the courage to leave their homeland and venture to the United States of America. "These

immigrants worked exceptionally hard under trying circumstances," says Balick. He says that like many Jewish parents. "They wanted their children to enter professions or business."

Balick wants the younger generation of the ever growing family, many of whom only know each other through periodic family reunions, to understand the immigrant generation's sacrifices, hard work and appreciation of education's value. The retired educator saw as a central goal of the immigrant generation was for their children to "go to school, listen to teachers," and to "stay in school as many years as possible to assure your future." Balick's family history is a message of appreciation, "remembering those who provided "the nurturing support, the incentive and the 'head start' "for the next generation of Balicks. He hopes his family genealogy, and others like it, "leaves this message to posterity and the future Jewish community at large." Balick also likens his completion of the family history to "passing the torch" to connect the generations. Adam Balick, a Delaware lawyer, has agreed to assume responsibility for continuing to update the Balick family history into the future.



This photo of immigrants is in the booklet "The Balick Family of Delaware 1890-1995 in the JHSD collection.



This photo was taken at a recent Balick family reunion.

Israeli Artist's Pottery and Mixed Media in Yorklyn

Haifa native Dina Angel-Wing received a B.A. in Art History from the University of Haifa and studied painting and drawing at Betzalel School of Art in Jerusalem and sculpture at Ein Hod Artists Village.

In 1977 she studied ceramics with Wayne Horuchi at Stanford and Raku with Andree Thompson in Berkeley, USA. She has exhibited at shows and galleries throughout the United States, France and Italy.

Her works range from Raku cups, teapots and containers to mixed media sculptures which evolved from her interest in the Japanese art of packaging. Her present series, known as "Dream Boxes" combine natural materials — black bamboo, hornet paper and black coral and clay forms — hand cast paper and calligraphy into harmonious interpretations of Japanese "furoshiki" or wrapped gifts. Each piece displays a serene sense of balance, color, and texture. Several of the containers will be exhibited with Ikebana flower arrangements by Midori Tanimune.

This exhibition can be seen at "A Touch of the Orient Gallery" in the Garrett Snuff Mills, Yorklyn, DE on Friday, October 27, and Saturday, October 28, 11 a.m. to 4 p.m. Phone (302) 239-4636.

Kraft Foundation Invests In Israel Bonds

Shelly Weinstein, President of the Board of Trustees of The Rabbi Jacob Kraft Educational Foundation has announced that the foundation has purchased \$25,000 in Israel Bonds. The Foundation's holdings \$275,000, seventy five percent of the annual income of which can be used each year for programming and grants. "I feel honored and pleased


that a foundation which memorializes Rabbi Jacob Kraft is capable of making a substantial investment in the present and future integrity and stability of the State of Israel." An upcoming program sponsored by the foundation is a talk by Rabbi Harold Schulweis at Wilmington's Congregation Beth Shalom on Monday November 20.

Writers needed
(Small Fee)

Proofreader needed
(Volunteer in Dover twice monthly)

Internships
(College students for editorial or business)

Call Dan at
(302) 427-2100

Tower Hill School	 Come see the many faces of Tower Hill School
	 Tower Hill is a coeducational, college preparatory, day school, prekindergarten through grade twelve.
Open House November 7 & 8, 1995 9 AM to 12 Noon 2813 W. 17th Street Wilmington, DE 19806 Admissions 657-8350	

*Comfortable
Senior
Living
with a
Personal
Touch*

*Independent and
Assisted Living*

**The
LORELTON**

2200 West Fourth
Wilmington, DE 19805
(302) 573-3580



PANIM EL PANIM

(Face to Face with JFD People)



**Morissa Sher
Named As JFD
Staff Associate**

By DAN WEINTRAUB
Editor of *The Jewish Voice*

Judy Wortman, Executive Vice President of the Jewish Federation of Delaware announced the appointment of Morissa N. Sher as JFD Staff Associate. Sher completed an internship with JFD in recent months. "Without Morissa's involvement, her expertise in computers, and energy, we could not have been ready to launch our population study in time," said Wortman, in welcoming Sher.

Sher told *The Jewish Voice*, "I'm very excited about working for JFD. I've spent my life utilizing all that the Jewish community has had to offer — Jewish day schools and summer camps, local and national Hillel, and two subsidized trips to Israel — Now, this is the beginning of my chance to give back to the Jewish community. In addition, working for JFD is an opportunity for me to learn the way federations and other Jewish agencies are run."



Morissa Sher

Sher graduated with a BA in Women's Studies from the University of Delaware where she minored in Psychology. She earned her Associates Degree at the University of Hartford in August 1991. Sher is a graduate of Akiba Hebrew Academy and she earned a Teaching Certificate for Sunday School from Gratz College. Among her future goals are to pursue graduate studies for a Masters in Social Work and a Certificate in Jewish Communal Services.

Sher pursued extensive volunteer

and educational activities in Israel in 1989 and 1991-1992. Active in Hillel at both U of D and the University of Hartford, she coordinated a Shabbaton entitled *Judaism and the Environment* while at the University of Delaware. Morissa annually read Torah for Yom Kippur at the U of D Hillel. Also at U of D, Sher coordinated and implemented a trip for Jewish and African American students to view *Bridges and Boundaries* an exhibition exploring relations between the Jewish and African American communities.

Wortman concluded, "We are thrilled to have her here and delighted that she's chosen to pursue a career in Jewish communal service."

**Caregivers
Support Group**

A support group for people who provide care or support for the elderly is now forming. The first meeting will be held on Thursday, November 16, 1995 at noon at the Jewish Family Service office.

To register, please call Jewish Family Service at 478-9411.

**UJA National Young
Leadership Conference In**

It's coming, the 10th UJA National Young Leadership Conference (Washington 10). Every two years over 2000 young Jewish adults from all over the US and the world gather in Washington to meet some new people, to discuss the past, present and future, and to have some fun. The Delaware Jewish Community is proud of its high level of representation at past YLC Washington Conferences. This year promises to have the same level of excitement as has been seen at previous Conferences, probably more.

Washington 10 is scheduled for March 17-19, 1996. It is recommended to make early reservations as spaces for Washington 9 filled up very quickly and several people were shut out, including over forty people

from Philadelphia. All are invited to an informal wine and cheese reception November 9, 7:30 PM at the JCC to meet previous Washington Conference attendees and to find more details about Washington 10. Please call the Jewish Federation of Delaware at 427-2100 to make your reservations.

**Young Leadership
Conference
Reception:
November 9
7:30 p.m.
at the JCC.
All are welcome.
RSVP 427-2100**

VALUE PRICED
Bonnie

Walking Technology

SOFT SPOTS
All Day Comfort

Stephanie

**SALE ENDS
Nov. 4th**

The Village Cobbler
Quality Value & Personal Service Guaranteed
Fouk & Naamans Rds., Wilm., DE • 475-6978

Sale \$49⁰⁰
Navy, Taupe, Black

Sale \$39⁰⁰
Black Suede, Navy, Whiskey, Taupe

**HOLING
Healthy Heart.
COLLECTION**

**FRENCH RAGS
TRUNK SHOW**

Simply the best,
most exciting
KNIT COLLECTION
TODAY thru OCTOBER 31st
9:30AM to 5:30PM

Please stop by at
your convenience

For your personal appointment
please call 478-7921

Lady's Image

Mount Lebanon Road at Route 202

Sizes 2 to 24

Introducing
LAGOS
Sterling silver, eighteen karat gold with citrine from the Caviar® Collection

exclusively at
**A.R. MORRIS
Jewelers**

GEMOLOGISTS • DIAMOND IMPORTERS • FINE TIMEPIECES
802-4 Market Street • Wilmington, Delaware 19801 • (302) 658-4013
PRIVATE SHOWING - THURSDAY, NOVEMBER 2ND 5-9pm

Celebrating
Our 125th Year

**THE
SHEARLING
SOURCE**

Philadelphia's
source for
exceptional
outerwear
since 1879

**Three
Convenient
Locations**

**JACQUES
FERBER**
Greenville
Established 1879

Furs • Shearlings • Leather • Cloth and Other Exceptional Outerwear
Philadelphia 215-735-1173 • Wilmington 302-652-4340 • Ardmore 610-642-5230

DINING and MORE



Regional American - Style Cooking
On And Off Premises Catering

RESERVE YOUR HOLIDAY
PARTIES NOW
BAR/BAT MITZVA RECEPTIONS
On or Off Premises

LUNCH MON. THRU FRI. 11:30-2:30PM • OPEN EVERY DAY FOR DINNER FROM 4:30PM
VOTED DELAWARE TODAY'S "BEST REGIONAL CUISINE"

321 E. Lea Boulevard
Wilmington, Delaware 19802
302-762-5655

VISIT OUR NEW ADDITION (with a Piano Bar Fri. & Sat.)



TiraMisu

RISTORANTE

ROMAN ITALIAN JEWISH CUISINE

We Suggest Timely
GIFT CERTIFICATES

**VALET PARKING
AVAILABLE**

528 South 5th Street, Philadelphia, PA 19147
For Reservations Call: (215) 925-3335
Open 7 Days A Week For Dinner,
Weekdays For Lunch

Authorized Ticket Agency
For The Delaware Valley

B & B tickettown

322 NINTH ST. PLAZA • WILMINGTON, DE 19801
TELEPHONE: (302) 656-9797 OR (215) 459-3283
TERRY SKLAR



Come out for a day of family
fun and shopping bargains

**DON'T MISS
DELAWARE'S
BIGGEST & BEST
FARMERS MARKET
& FLEA MARKET**

Voted Best of Delaware

FRI & SAT. 10 A.M.-10 P.M.
SUNDAY 10 A.M.-6 P.M.

Rt. 13 (across from Wilmington Airport)
New Castle, DE 328-4101

**ALL PRODUCTS ARE FRESH-BAKED ON
PREMISES EVERY MORNING • 7 DAYS A WEEK**
Under The Supervision of Va'ad Ha Kashrut For Baked Take-Out Goods! (excluding donuts)



Voted Best Bagels & Coffee in Delaware

Try our breakfast & lunch specials & our
new cookie & pastry selection.

Bagels & Donuts Inc.

SILVERSIDE & MARSH RD. 478-9016 • 1901 PENNA AVE. 652-7960

OUR RESTAURANT GUIDE

WILL BE FEATURED IN OUR
NOVEMBER 10TH
ISSUE

Introducing

CHESAPEAKE BAGEL BAKERY®

"Made From Scratch on the Premises Daily"

DELI SANDWICHES • HOMEMADE SOUPS
FRESH SALADS • GOURMET COFFEES
DESSERTS & PASTRIES

MEETING PLATTERS / CATERING
ENJOY IN OUR RELAXING ATMOSPHERE OR TAKE-OUT

OPEN 7 DAYS A WEEK

Mon.-Fri. 6:30 AM-8 PM

Saturday 7 AM-8 PM • Sunday 7 AM-6 PM

4231 Concord Pike
Wilmington
(Super G Center)

(302) 479-0027
FAX 479-0133



SUNDAY BUFFET

Every Sunday 1-7:00 pm
Private rooms available for groups
of 18-80 people at no extra charge.

RECEPTIONS, BANQUETS, PICNICS
Call for our brochure

Now taking reservations
for Thanksgiving

Rt. 842, Unionville, PA
(610) 347-2414
Minutes from Kennett Square
& Longwood Gardens



Exotic, Mysterious, Wonderful

Casablanca Restaurant

Enjoy a 7 Course Dinner
Featuring:
Chicken, Lamb, Beef
Shishkabobs, Couscous
and Moroccan Baklava
\$20 per person



★ 1st and 3rd Saturdays
★ of each month...
★ Middle Eastern and
★ Traditional
★ Male Belly Dancing
★ featuring Omar

CASABLANCA is a pleasant trip to an exotic land,
an intimate and lavish atmosphere with belly
dancers providing the entertainment.
Come...discover the mysteries of Morocco. It's an
experience you won't soon forget.

Holiday parties for up to 300 people

Belly Dancers Fri. & Sat. Nights

VOTED #1 DEL. TODAY EXOTIC RESTAURANT • TOP 10 FOR THE MONEY • TOP 10 NEW RESTAURANT
4010 DuPont Hwy., New Castle
(302) 652-5344

Hours: Every Day 5:30 PM-1:30 AM

Let Us ENTERTAIN You

SALLY MITLAS ORCHESTRA



INCREDIBLE KLEZMER!
ISRAELI FAVORITES!
PLUS
AMERICAN POP, ROCK, SWING, JAZZ

Available Exclusively Through
Ken Silver Entertainment
215-886-9300



A Most Uncommonly Entertaining Dance Band

Classical to Contemporary,
Big Band to Broadway,
Motown to Top 40 and more . . .
The Right Touch for All Occasions.

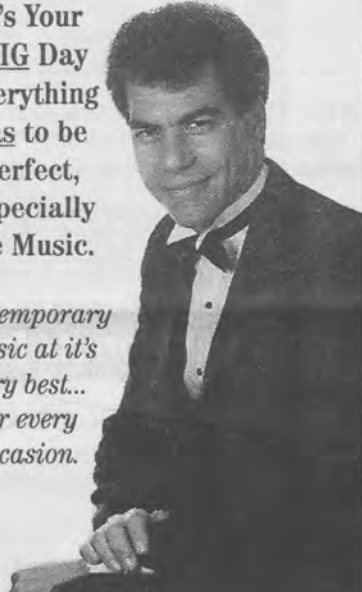
Janis Nowlan ORCHESTRA
610-296-2626
Elegant! Energetic! Exciting!

For music that swings

STU WEITZ
and his orchestra


215-628-9999

It's Your **BIG Day** Everything has to be Perfect, Especially the Music.



Contemporary music at it's very best... for every occasion.

TOP 10 REASONS TO HAVE...



EDDIE DAVIS ORCHESTRA
AT YOUR AFFAIR

- Music
- Repertoire
- Versatility
- Experience
- Consistency
- Professionalism
- Energy
- Personality
- Warmth
- Talent

BALA EXECUTIVE COMMONS
11 BALA AVENUE
BALA CYNWYD, PA 19004
215-664-8553

All The Best Bands Drive In From Philly!



- Weddings
- Parties
- Corporate
- Banquets
- Bar & Bat Mitzvahs


We Specialize in **BAND/D.J. PARTIES**

Call: 1-800-776-6220

Delaware's Favorite Party Band!

Marc Shaw & Orchestra

Sid Miller ORCHESTRA



The best in traditional and contemporary music played with excellence, authenticity and enthusiasm.

CALL (215) 389-7750
11 BALA AVE., BALA CYNWYD, PA 19004

BAR/BAT MITZVAHS WEDDINGS

FAMILY PORTRAITS MAKE THE PERFECT HOLIDAY GIFT



Montgomery/Ford
photography

Now scheduling HOLIDAY appointments
ask about our FREE gift offering
2424 Grubb Road, Wilmington, DE 19810
(302) 475-2424 • Fax: (302) 475-8042

BUSINESS & PROFESSIONAL DIRECTORY

ATTORNEYS

BORIN & McDONALD P.A.
ATTORNEYS AT LAW

Marsha Zutz Borin
Robert C. McDonald
Barbara J. Gadbois

8 MILL ROAD
SUITE 304
WILMINGTON, DE 19806
TELEPHONE • 302-888-2900
FAX • 302-888-2902

Carol A. Casner

ATTORNEY AT LAW

(302) 888-1968
Fax: (302) 888-0273

Pennsylvania Building
110 S. French St. - Suite 406
Wilmington, Delaware 19801

DAVID E. DRIBAN, M.D.

FAMILY AND COMMUNITY MEDICINE

ACCEPTING NEW PATIENTS

Adult Medicine
Minor Surgery
Dermatology
Pediatrics
Gynecology
Sports Medicine

1306 Washington Ave.
(302) 322-0860
New Castle, DE, 19720
Hours By Appointment

PHILIP BERGER

Weichert "Presidents" & "Ambassadors" Club

Weichert,® Realtors

OFF.: 302-478-3800 • RES.: 302-764-8384
Professional, competent, "enthusiastic"
real estate service since 1969

ASK FOR A LIST OF REFERENCES.



DENTIST



DANIEL W. FINK, D.D.S.

FAMILY DENTISTRY

TELEPHONE
(302) 479-7111

TALLEYVILLE TOWNE SHOPPES
3650 SILVERSIDE ROAD
WILMINGTON, DE 19810

"It's Who You Call"

Barry Schlecker
President
25 Years Experience



NETWORK PERSONNEL

The Area's Fastest Growing Staffing Service
1700 Shallcross Ave. • Wilmington, DE 19806

302-656-5555

JUDITH B. GILBERT
SALES REPRESENTATIVE



TRANSAMERICA
OCCIDENTAL LIFE

Bellevue Park, Corp. Center
300 Bellevue Parkway
Suite 190
Wilmington, DE 19809-3704

(302) 798-3771
(800) 633-8584 toll free



THE SPEECH CLINIC, INC.

providing
Comprehensive
Speech
Language Therapy
Services

999-0702

5147 W. Woodmill Drive,
Suite 21,
Wilmington DE 19808

(302) 998-2060

KELMAN CHIROPRACTIC CENTER, P.A.



MICHAEL P. KELMAN, D.C.
3722 Old Capitol Trail
Wilmington, Delaware 19808

Family Practice of Chiropractic

BAYSHORE Ford

SAVINGS • SELECTION PERSONAL SERVICE

Call Sandye or Jerry Turnauer for personal service.



1995 Ford Windstar
"THE 'PEOPLE MOVERS'"



1995 Ford Explorer

SALES OPEN:
Monday-Friday
7:30am-9pm
Saturday
7:30am-5pm

Route 13 & I-495, New Castle, DE
(302) 656-3160



HARRY S. WILSON, INC. INSURANCE

510 Philadelphia Pike
Wilmington, DE 19809

(302) 762-9292
FAX (302) 762-9289

LAWRENCE A. WILSON, CPCU, CIC PRESIDENT



BERNIE FREIMARK
1994 TOP LISTING AWARD*

Celebrating
20 years
as a Realtor®



"Let me put my experience to work for you!"

Selling Your Home? Call BERNIE

Brandywine Office
3302 Concord Pike • 478-3800

*Top Company-Wide Award - Out of 8,000 WEICHERT AGENTS



PANIM EL PANIM
(Face to Face with JFD People)



Communal Workers Brunch Explores Volunteer Professional Relationship

The Jewish Communal Professionals Association of the Delaware Valley welcomes Jewish communal workers to participate in its interactive program exploring The Volunteer - Professional Relationship ... Experiences, Empowerment, and Expectations featuring Toni Young, President (a.k.a - the Volunteer), Jewish Federation of Delaware and Judy B. Wortman, Executive Vice President (a.k.a the Professional), Jewish Federation of Delaware on Thursday, November 9, 1995 from 8:00 a.m. - 9:30 a.m. at the Jewish Community Center of Delaware at 101 Gar-

den of Eden Road, Wilmington. The cost of program includes breakfast. It is \$5 for Members, \$8 for Non-Members, \$4 for Students and Interns. Please RSVP by November 1 to 427-2100.

"This is the first JCPA program to be offered in Delaware says Lelaine Nemser, of the JCPA, "Delaware professionals are particularly urged to attend."

Send checks to: Seth Bloom, Jewish Federation of Greater Philadelphia, 13th Floor, 226 South 16th Street, Philadelphia, PA 19102.

JHSD Annual Meeting and Membership Drive

The Jewish Historical Society will hold its 1995 Annual Meeting and Membership Drive Kick-off on November 12th, 7:30 p.m. at Adas Kodesch Shel Emeth Synagogue. The event is free and open to the entire community. Come celebrate our 20th Anniversary and help us expand our membership as we move into the future. The evening will feature a slide presentation and special refreshments. "Hope to see you there," said one organizer. The JHSD is a beneficiary of the UJA Federation Campaign, which is administered here by The Jewish Federation of Delaware (JFD)

Fitness Center Anniversary Party

The Fourth Annual Fitness Center Anniversary Celebration will be held at the Jewish Community Center on Saturday, November 4 from 8 p.m. to 12 midnight. The celebration will feature a live comedy show with comedians Jeff Clark and Mary Francis Connelly. Also included will be a food and beer/wine bar, music and dancing. Door prizes will be awarded.

The cost is \$20.00 per person and tickets can be purchased at the JCC Fitness Center Control Desk. For more information, call Kathy Holveck, Fitness Center Coordinator, at (302) 478-5660.



Engrained Forever Exhibit

Artist Mimi Schiff has created an exhibit that touches the consciousness of all who view it. Engrained Forever is an art exhibit featuring a series of full-size plywood panels, in which grain patterns are used, generally supplemented only with black acrylic, to prepare a series of Holocaust motifs that have proven to be very moving.

Schiff captures the essence of the most tragic period of man's inhumanity to man. The panels are titled, "They Shall Share the Burden", "Kristallnacht - Night of Broken Glass", "Branded on the Sinew and the Bone", and "A Story of Callous Brutality", just to name a few. Each panel depicts an event of the Holocaust in its own special way. The exhibit is further enhanced by poetry, a docent script, and the artist's comments about the creation of the panels.

The exhibit represents years of in-depth research and study from authentic texts and photo albums, interviews with survivors, as well as critiques from rabbis. Study of the panels reveals reproduction of some familiar photos, as well as suggestive imagery that simply appeared from paint and textures in the wood forming multiple impressions.

The exhibit will be on display at the Jewish Community Center from

October 31 through November 30, 1995. The exhibit hours are Sunday and Friday, 9 a.m. to 5 p.m., and Monday through Thursday, 9 a.m. to 9 p.m.

An opening of the exhibit will be held on Sunday, November 5 at 3 p.m. The artist, Mimi Schiff, will discuss the exhibit from an artist's point of view. Schiff re-creates all the horror and tragedy of the Holocaust as well as the eventual triumph over evil. Dorothy Finger, a noted Wilmingtonian and Holocaust survivor will give her impression of the exhibit.

Engrained Forever is being co-sponsored by Adas Kodesch Shel Emeth Congregation, Congregation Beth Emeth, Beth Shalom Congregation, Halina Wind Preston Holocaust Education Committee, Jewish Family Service, National Conference of Christians and Jews, National Council of Jewish Women - Wilmington Section and Temple Beth El. The exhibit is being coordinated by the Jewish Community Center of Delaware.



"There Will Be A Day When We Will Be Remembered" is the title of this work from the exhibit.

This program is partially funded by a grant from the Delaware Humanities Forum and a grant from the Delaware Division of Arts' DETours program and the National Endowment for the Arts.

For more information on the exhibit or to schedule a group tour, contact Artie Allen at (302) 478-5660.

Albert Einstein Academy Celebrates Its Growth and Expansion

Albert Einstein Academy, the only Jewish Day School in Delaware has experienced tremendous growth in the past two years. Having outgrown its facility on Garden of Eden Road in the Jewish Community Center Complex, the school expanded into the offices of the Jewish Federation of Delaware. The Jewish Federation vacated its offices to enable Einstein to expand. During the summer the expansion and renovation process was completed.

The school will celebrate its expansion and renovation at a champagne reception on Sunday, October 29th at 1:30 p.m. at the school. For further information contact the chairperson of the event, Mrs. Michelle Margules at the Einstein office, 302-478-5026.

Make Your Party Invitations Special by Personalizing Them With Invitations from Sue's Stationery

Let us help you design your own invitations using our NEW Calligraphix System. We also offer the InScribe System for addressing all your special occasions envelopes.

Ask about our NEW party planning service.

We offer a variety of Engraved Invitations for Graduations, Weddings, Bar/Bat Mitzvahs, Birthdays and Showers.

Choose from our many different type styles and colors. Fast turnaround for orders needed in a hurry.

WE DISCOUNT ALL ORDERS BY APPOINTMENT ONLY: SUE BARNETT: (302) 529-1174

E XPLORE RETIREMENT OPTIONS

Affordable Rental Retirement Apartments



Join us for a tour of our one and two bedroom apartments complete with full kitchens, washers & dryers, 24 hour security and *no entry fee*. Call our Marketing Office today to schedule your tour.

(302) 798-3500

Captain's Deck
An Independent & Assisted Living Rental Retirement Community
7807 Governor Printz Blvd. * Claymont, DE

Star treatment! That's what you get.

\$100 BACK

PURCHASE OVER \$500 OF CUSTOM DRAPERY, VERTICAL BLINDS, MINI BLINDS, DUETTE SHADES

Ask about our 6-mo. same as cash! To qualified buyers.

FREE SHOP AT HOME SERVICE

201 Greenhill Ave Wilmington, DE 19805 (302)656-3066
4417 Gov. Printz Blvd Wilmington, DE 19802 (302)762-STAR
EXPERT INSTALLATION MINI-BLINDS • DRAPERIES • VERTICALS WALLCOVERINGS • CARPETS • FLOORS • PAINTING

RED STAR DECORATING
SINCE 1911

CALENDAR OF EVENTS

Entries for the Calendar of Events are due on the Thursday deadline, published in *The Jewish Voice*. Copy should be typed and double spaced. Entries are preferred on 3 1/2" floppy disk or via E-mail. Please include day, date, time, place, brief description, and contact person.

OCTOBER

Friday _____ 27

Pottery and Mixed Media Sculpture by Dina Angel-Wing: Exhibition ranges from Raku containers and teapots to clay forms incorporating bamboo and handmade paper from the artists "Dream Box Series". The Exhibit runs Friday, 10/27 and Saturday, 10/28, 11 a.m. to 4 p.m. at "A Touch of the Orient Gallery" Garrett Snuff Mills, Yorklyn, DE. Phone 239-4636.

NOVEMBER

Wednesday _____ 1

Diabetes Support Group Meeting at the JCC. 12:45 p.m. For more information, call Michael Grossman at (302) 478-5660.

Thursday _____ 2

20th Anniversary Celebration of the JCC Senior Center. 5:45 p.m. Join members of the Senior Center for the 20th Anniversary Cel-

ebration featuring David Curtis, "The Swingin' Cantor". For more information, call Michael Grossman at (302) 478-5660.

Saturday _____ 4

Fitness Center Anniversary Celebration. 8:00 - 12:00 midnight. Join the community as we celebrate the Fourth Anniversary of the JCC Fitness Center featuring a comedy cabaret, music, dancing and plenty of food. Tickets are \$20.00 per person. For more information, call Kathy Holveck at (302) 478-5660.

Sunday _____ 5

Engrained Forever Opening Event. 3:00 p.m. Mimi Schiff, the artist of the Engrained Forever exhibit, will introduce her work, discussing her inspiration to create it. Dorothy Finger, a noted Wilmingtonian and Holocaust survivor will give her impressions of the exhibit. Free of charge. For more information, call Artie Allen at (302) 478-5660.

Thursday _____ 9

Smoking Related Cancers: More Than Just Your Lungs. 11:00 a.m. Join us for a discussion on the effects of smoking on your organs, cancer sites and second-hand smoke. Free of charge. For more information, call Scott Katz at (302) 478-5660.

Cultural Arts Author Series with Yossi Klein Halevi. 7:30 p.m.

Halevi will discuss his book, "Memoirs of a Jewish Extremist". The cost is \$2.00 per person. For more information, call Mona Allen or Ella Zukoff at (302) 478-5660.

An informal wine and cheese reception about the 10th UJA National Young Leadership Conference (Washington 10) will take place 7:30 p.m. at the JCC. This is a chance to meet previous conference attendees and to find more details about Washington 10. Please call the Jewish Federation of Delaware at 427-2100 to make your reservations.

Saturday _____ 11

Beth Shalom Veteran's Day Shabbat. A service in recognition of the 50th anniversary of the ending of World War II.

Club Night at the JCC. 7:30 p.m. Children in grades 3 through 6 will enjoy a variety of activities with a monthly rotation of a movie or open gym night. The cost is \$6.50 for JCC Members and \$9.50 for Non-Members. For more information, call Elyse Greer at (302) 478-5660.

Monday _____ 13

Are You Scared of Your TV? 7:30 p.m. What is appropriate for children to watch? How can you use your TV to teach children. Co-Sponsored by Jewish Family Service and the JCC. Free of charge. For more information, call Artie Allen at (302) 478-5660.

Wednesday _____ 15

Candlelight Dinner and Remembrance Service. 5:45 p.m. After the dinner portion of the evening, members of the Jewish War Veterans will hold a Remembrance Service at the JWV Memorial Wall at the JCC. For more information, call Michael Grossman at (302) 478-5660.

Thursday _____ 16

Cultural Arts Authors Series with Fanya Gottesfeld Heller. 7:30 p.m. Heller will discuss her book, "Strange and Unexpected Love: A Teenage Girl's Holocaust Memoirs". The cost is \$2.00 per person. For more information, call Mona Allen or Ella Zukoff at (302) 478-5660.

Sunday _____ 19

Beth Shalom Sisterhood Torah Fund Brunch. 11:30 A.M. at the Synagogue, 18th & Baynard Blvds. Speaker will be David Preston of the Philadelphia Inquirer.

Monday _____ 20

Rabbi Harold Schulweis will speak at Congregation Beth Shalom on his book **FOR THOSE WHO CAN'T BELIEVE; OVERCOMING THE OBSTACLES TO FAITH.** Under the auspices of the Kraft Educational Foundation the event is open to the community, no admission charge. 7:30 P.M., 18th & Baynard Blvds.

Tuesday _____ 21

Senior Center Thanksgiving Luncheon. 12:00 noon. Members of the Stroke Club and the Kutz Home will join seniors for a traditional Thanksgiving meal. A holiday donation is requested. For more information, call Michael Grossman at (302) 478-5660.

Thursday _____ 30

Cultural Arts Author Series with Blu Greenberg. 7:30 p.m. Greenberg will discuss her new book, "Black Bread: Poems After the Holocaust". The cost is \$2.00 per person. For more information, call Mona Allen or Ella Zukoff at (302) 478-5660.

Ongoing

October 31 - November 30 Engrained Forever Exhibit at the JCC. Engrained Forever is an art exhibit, created by Buffalo area artist Mimi Schiff. It features a series of full-size plywood panels, in which grain patterns are used, generally supplemented only with black acrylic, to prepare a series of Holocaust motifs that have proven to be very moving. The exhibit is open on Sundays and Fridays from 9 a.m. to 5 p.m. and on Mondays through Thursdays from 9 a.m. to 9 p.m. Free of charge. For more information or to schedule a group tour, call Artie Allen at (302) 478-5660.



Maaco
AMERICA'S SMART CHOICE
for Auto Painting • Bodywork • Collision Repair

Craig S. Schlott
Owner

2400 Gov. Printz Blvd.
Wilmington, DE 19802
tel 302.762.5777 • fax 302.762.4397




TRY US FIRST... TRY US LAST... BUT TRY US!

PHILIP KOFF **KIRKWOOD DODGE** NATHAN LEVIN

4800 Kirkwood Highway, Wilmington, DE (302) 999-0541

Buying a sign from somebody who does them on the side?



For almost 60 years, signs have been our only business. We've designed, built, installed and maintained them for companies great and small . . . in Delaware, Maryland, New Jersey and Pennsylvania. If you want a quality sign, hung right side up, don't go to a part-timer. Come to us for a handsome, durable, image-building Tupp sign!

Call **322-1600**

TUPP SIGNS

457 E. New Churchman's Rd.
New Castle, DE 19720

SYNAGOGUE LIFE

AKSE Sisterhood Presents The Ardensingers "Gilbert and Sullivan" Roadshow

On November 4, 1995 the Ardensingers will present a program of musical selections from their annual Gilbert and Sullivan production and from Broadway shows. "This fine established singing group from our local area, including our own Sheila Goldlust, has been performing shows in the community for years and now comes to our synagogue for the first time," said one sisterhood member.

The show will be performed from 8:00 to 9:00 p.m. and will be followed by dessert. The cost for the evening is \$7.50 for adults and \$5.00 for children 12 and under. Tickets are available at the synagogue office NOW. Tickets may also be purchased at the door.

Advance reservations would be



Ronnie Gerry of Arden Singers

appreciated to plan for the dessert to be served following the performance. For information or reservations, you may call Nedda at 654-7674.

Beth Shalom Sisterhood Torah Fund Brunch

David Preston will be the guest speaker at Congregation Beth Shalom Sisterhood Torah Fund Brunch on Sunday, November 19 at 11:30 A.M. David has been a staff writer with the Philadelphia Inquirer and Wilmington News-Journal. The son of Holocaust survivors George Preston and the late Halina Wind Preston of Wilmington has written three cover stories about his parents for the Inquirer Sunday magazine. His article "Journey To My Father's Holocaust" won a citation from the Overseas Press Club Of America and was a finalist for the Pulitzer Prize in feature writing. Mr. Preston's talk will also feature a new film by Janine Biden on a trip he and his wife took to his mother's home town in the Ukraine.

The Beth Shalom Sisterhood is joining with members of Conservative Synagogue Sisterhoods throughout the country in support of the

Jewish Theological Seminary of America. The Torah Fund provides financial assistance to seminary students enabling them to pursue their Judaic studies.

For reservations, please contact Sue Gutter (798-9137) or Elaine Morganstein (478-8667). The community is welcomed to this event.

Caregivers Support Group

A support group for people who provide care or support for their parents, grandparents, or other elderly people is now forming. The first meeting will be held on Thursday, November 16, 1995 at noon at the Jewish Family Service office. To register, please call Jewish Family Service at 478-9411.

Candle Lighting

OCTOBER
27TH — 5:24 PM
NOVEMBER
3RD — 4:39 PM
10TH — 4:31 PM
17TH — 4:25 PM
24TH — 4:21 PM

NACHES

Schwartz-Rosenweig

Mr. and Mrs. Barton Schwartz are pleased to announce the marriage of their son, Paul Alan Schwartz, to Julie Rosensweig, daughter of Dr. and Mrs. Norton Rosensweig of Scarsdale, New York.

The ceremony and wedding reception took place October 21, 1995 at West Chester Reform Synagogue in Scarsdale, New York.

Paul is a graduate of Concord High School, University of Virginia and Michigan Law School. Julie is a graduate of Princeton University and Michigan Law School.

The couple will honeymoon in Australia and live in Atlanta, Georgia.

There's no charge to print your naches announcements and photos in The Jewish Voice. Items published as space allows. Send your announcements by e-mail to jewishvoic@aol.com or by mail to The Jewish Voice, 100 W. 10th St., Suite 301, Wilmington, DE 19801

JFS And JCC Plan Continuing Family Life Education Series

The Jewish Community Center, in cooperation with Jewish Family Service, have planned a series of family life education programs for the Wilmington community. Myrna Ryder, Director of the Jewish Family Life Education Department at Jewish Family Service stated, "We've developed a series of educational opportunities that offers something for everyone."

All of these programs will be held at the Jewish Community Center. Most family life education programs are free of charge. Advance registration is required at the JCC Front Desk. For more information, contact Artie Allen at (302) 478-5660.

Veteran's Day Shabbat At Beth Shalom

To commemorate the end of World War II, Wilmington's Congregation Beth Shalom will honor all veterans as part of the regular Shabbat Service on Saturday Morning, November 11, 1995. A memorial service for those members of the Jewish Community who gave their lives for our country will be part of the service. All veterans and their families are invited for this service which begins at 9:30 A.M. Congregation Beth Shalom is located at 18th & Baynard Blvds.

New Member Breakfast At Congregation Beth Emeth

The Membership Committee of Congregation Beth Emeth will hold its annual breakfast for new 1995/1996 members on Sunday, November 5th starting at 9:30 a.m. Potential members are also invited to attend. Following breakfast, new and potential members will be welcomed by Rabbi Grumbacher, Rabbi Malinger and members of the Congregation. A child-sitting service will be available. RSVP to Jeanne and Ed Davis at 475-8448.

joel h. shoulson

the only second generation fully approved full-time, professional



serving your community since 1951

1-800-700-JOEL (5635)

610-896-7750

please call for videotape and information



Committed to Creative Insurance and Risk Management Solutions for More Than 50 Years

Complete insurance coverage and underwriting facilities for:
• Business and Personal Insurance
• Marine • Surety bonds

Specialists in unusual risks

PLI Professional Liability Insurance, Inc.
an affiliate of Harry David Zutz Insurance, Inc.

Comprehensive coverage for professionals of all disciplines

300 Delaware Avenue
P.O. Box 2287
Wilmington, DE 19899

Branch Office:
#1 Seething Lane
London, EC3N 4NH
England
Phone: 071-962-2003

(302) 658-8000

We extend our best wishes to our friends and clients.

One sign that shows our rehabilitation program works.



When someone you love needs rehabilitation therapy, your first concern is getting that person well — and home — fast. That's why so many families rely on Leader Nursing & Rehabilitation Centers.

Our patients get better fast because they follow individual treatment plans. Each plan is made up of a variety of services, like physical therapy, speech therapy, even therapeutic activity programs. And every one is administered by a team of caring professionals.

Plus, Leader Nursing & Rehabilitation Centers are certified to provide Medical coverage. Which means that the best care available can now be more affordable.

Our staff will be happy to discuss your particular needs. And our free pamphlet, Medicare Facts can tell you more about Leader and Medicare. Call for your copy today. It's just one sign of our commitment to rehabilitation therapy that works. You'll be holding the other sign, when the one you love comes home.

LEADER

NURSING & REHABILITATION CENTER

700 Foulk Rd. • Wilmington • (302) 764-0181

דור לדור

Linking the generations...

Cantor Mark E. Kushner
Certified Mohel

Brit Milah & Baby Namings

1-800-559-BRIS

ARTS • ENTERTAINMENT • BOOKS

Russian Ballet Theatre to Perform Tribute to Fred and Ginger

The Russian Ballet Theater of Delaware (RBT) will celebrate legends Fred Astaire and Ginger Rogers with its '95-'96 season opener, *Fred & Ginger*, at The Playhouse Theatre (located in the Hotel du Pont) November 3 and 4. Performances begin at 8 p.m.

A nostalgic piece that plays on the dance couple's elegant style, *Fred & Ginger* was originally choreographed for the New York City Ballet and staged for the Russian Ballet Theater by Robert LaFosse. The piece has drawn rave reviews from New York City audiences.

In addition to *Fred & Ginger*, the November performances will include highlights from *Le Corsaire* and *Giselle*, and the world premieres of Mozart's *Serenade* and *The Raven*, both of which were created by RBT guest choreographer and dancer, Daniel Baudendistel. Also joining the RBT for its November performance are Robert LaFosse of the New York City Ballet, Cynthia Harvey of the

American Ballet Theatre, and actress and former ABT star Leslie Browne.

Tickets to the Friday, November 3 and Saturday, November 4 performances are \$22-\$42, with special student, senior and group rates available. Subscription tickets for the '95-'96 season series are also available. For tickets and performance information, call The Playhouse Theatre at (302) 656-4401.

The RBT dance troupe is primarily comprised of a group of dancers who were classically trained in the finest ballet schools in Russia. These dancers have found a permanent home in Delaware. Since May 1994, they've performed world-class ballet to standing ovation crowds and have attracted the attention of well-known American dancers and choreographers, who often join the company as guest artists. The RBT is the state's only fully professional resident ballet company.

The Russian Ballet Theater of Delaware is a non-profit arts organi-



zation providing entertainment and educational outreach programs in the tri-state area. Marsha Zutz Borin, Esq., is the Executive Director of the Russian Ballet Theater. For more information call the development office at (610) 255-3435.

Words & Music :

Delaware Concert Featured Concentration Camp Music

By STEVE COHEN

Special to *The Jewish Voice*

One rarely finds a concert that's close to perfect — where technical skill and emotional intensity combine. This happened twice in the past two weeks.

Stephen Gunzenhauser led the chamber-sized string orchestra from the Delaware Symphony in a duplication of the final concert given at the Terezin concentration camp in 1945. The original concert included the world premiere of a *Study for Strings* by Pavel Haas, a Czech Jew who was one of the prisoners at Terezin. Shortly after the premiere, Haas and most of the other musicians were gassed to death by the Nazis.

The Delaware performance, at the Hotel duPont, included eleven musicians. At Terezin, approximately thirty players were in the orchestra. The reason for this was that the Nazis had imprisoned so many Jewish musicians at Terezin and wanted to give all of them something to do while they were awaiting their turn to die.

The program was all-Czech and included the romantic and optimistic *Serenade for Strings* by Antonin Dvorak.

The German government maintained Terezin as a model camp, to show visitors from the Red Cross how well the Nazis were taking care of their "political" prisoners. But the system was set up to transport all Terezin inmates to Auschwitz and its gas chambers.

One musician escaped. He was Karel Ancerl, the man who conducted this particular concert. Ancerl went on to become Czechoslovakia's foremost conductor in the post-war period.

This music, and the story of its players, is being preserved by the Terezin Chamber Music Society, led by violist Mark Ludwig. He's originally from Philadelphia and his brother Michael is associate concertmaster of the Philadelphia Orchestra. The Philadelphians, under Wolfgang Sawallisch, recently performed two pieces composed at Terezin, but this Wilmington event is the first re-creation of an entire Terezin concert.

The Philadelphians, led by Sawallisch, gave several excellent performances in the past two weeks, including Beethoven, Hindemith and some chamber pieces. The highlight of all was Richard Strauss's *Ein Heldenleben* (*A Hero's Life*). It was a transcendently beautiful rendition, fortunately preserved on a recording for EMI which will be issued next year.

This series of *Heldenleben* performances and the recording session were long anticipated. Partly because of Sawallisch's reputation as the world's leading interpreter of Strauss, partly because it's such a spectacular composition and partly because of the Philadelphia Orchestra's long association with Strauss's music. (Conductor Leopold Stokowski used to tell me of his friendship with Strauss, including tours of art galleries together.) But the project was delayed for while Sawallisch searched for a new concertmaster who could do justice to the difficult violin solos in the piece.

The wait was worthwhile. Erez Ofer, now occupying the first chair in the orchestra, dazzled everyone last week with his subtle and beautiful playing of the romantic themes. The entire orchestra sounded superb.

A marvelous short play by Jeffrey Hatcher, "Thirteen Things About Ed Carpolotti" is on view at the Philadelphia Theatre Company's home, Plays & Players Theatre, through November 5. It's part of an evening titled *Three Viewings*, three vignettes set at a funeral home. All are written by Hatcher and directed by Mary B. Robinson, who was the Artistic Director of the lamented Philadelphia Drama Guild.

All three are well-crafted and performed, but "Thirteen Things" is the gem. It has humor, drama and an ironic plot. Scotty Bloch, a mature actress with Broadway credits, superbly portrays the surprised widow of Mr. Carpolotti. This is the best acting performance locally since Zoe Caldwell in *Master Class* on this same stage last season.

Grandma Sylvia's Funeral, which we enjoyed last season, is back for a limited return engagement at the Olde City Playhouse at Third & Race Streets in Philadelphia. (Editor's note: Stand out performer Bob Schiller returns to the cast now in a new role.) This is participatory theater, partly improvised, that supposedly takes place at an actual funeral. (How about attending this right after seeing *Three Viewings*?) It includes a kosher "mitzvah meal," where audience members mingle with the mourners/performers.

An extreme extension of this idea is *Pomp, Duck & Circumstance*, now playing at its own special space in New York's Dewitt Clinton Park. This "happening" combines theater and dining, like *Grandma Sylvia's Funeral* or *Tony & Tina's Wedding*, but on an entirely different level. World class entertainment, including some spectacular circus acts, is combined with a lavish gourmet meal. The creator, Hans-Peter Wodarz, calls it "a restaurant out of control."

Up until now, *Show Boat* was the most expensive show in Manhattan at \$75 a ticket. *Pomp Duck & Circumstance* doubles that tab (of course the dinner is included.) At \$300 a couple, this is meant for only the elite. Are you in that exclusive circle?

JCC Author Series Features Yossi Klein Halevi

Yossi Klein Halevi will be appearing at the Jewish Community Center as part of the Jewish Cultural Arts Author Series on Thursday, November 9 at 7:30 p.m. Halevi will be discussing his book, "Memoirs of a Jewish Extremist".

The moving and explosive personal story of Yossi Klein Halevi, the son of Holocaust survivors who became an American Jewish extremist, and his life in the radical underground which led him from American demonstrations to sit-ins in Moscow and later to the more peaceful

life of a moderate.

Now a senior writer for "The Jerusalem Post", Halevi is featured in the film, "Kaddish", part of the Cultural Arts Film Series. The film is a documentary showing Halevi growing up with his father. The film will be shown at the JCC on Sunday, December 3.

The cost for the author lecture is \$2.00 per person. Tickets are now on sale at the JCC Front Desk. For more information, call Mona Allen or Ella Zukoff at (302) 478-5660.

Gemini Concert A Musical Double Feature At The JCC

Gemini celebrates with their audiences the fun, warmth, and humor of family life. Kids and adults love to sing with them. From start to finish, a family concert with twin brothers abounds with rousing sing-a-longs, hand motion tunes, folk tales, and music from around the world. The highlights of their shows are Gemini's original, sparkling songs about the everyday experiences of childhood and growing up.

San and Las combine uncannily matched voices with wonderful musicianship on nearly a dozen instruments. Gemini bring to their concerts a natural ease around children. The twin brothers have an up-beat flair for involving everyone, from tots to grandparents, in the music making. The result is a show full of laughter and grins, boisterous fun, and the magic of hushed singing. These American twins are also fluent in Hungarian/Russian.

Gemini have released five recordings and one live concert video of their own songs and traditional folk music, "Pulling Together", their 1988 recording, received a Parents' Choice Magazine Award. Their next release, "Growing Up Together!" received the same award and, in

addition, was cited by the American Library Association as a 1990 Notable Children's Recording. "Fancy That!" their first video, has been voted one of the Top 10 children's videos by the American Library Association and Random House in their book, "1992 Best of the Best".

San and Las grew up hearing a rich variety of music at home. Their father, a fine singer and a Cantor in the synagogue, taught them everything from religious music and Italian opera, to Hungarian and Yiddish folk songs. Their mother, though not a musician, nevertheless had a powerful impact on their choice of careers. "The music comes from our father," the brothers say, "but whatever it takes to get up in front of an audience and put a song across, that comes from other mother's spirit."

Gemini will be performing at the Jewish Community Center on Sunday, October 29 at 3:30 p.m. Tickets for the show, as well as Gemini's cassette and video tapes, are available at the Front Desk. Those who purchase their tickets before October 23, may enter a drawing to win one of four Gemini cassette tapes. For more information, call Mona Allen at (302) 478-5660.



Gemini gives new meaning to the phrase "twin bill." See them on October 29.

NATIONAL • INTERNATIONAL



ISRAELI SOLDIERS WEEP: TEL AVIV -- Israeli soldiers weep while embracing one another at the funeral of Sergeant Yotam Inbar, October 17, one of six soldiers killed by guerrillas in south Lebanon on October 15. Israel's government vowed its troops had freedom of action against guerrillas. Prime Minister Rabin accused Syria of encouraging the violence. RNS Photo/Reuters. Photo at left.

Albert Einstein Academy Celebrates Its Growth And Expansion

Albert Einstein Academy, the only Jewish Day School in Delaware has experienced tremendous growth in the past two years. Having outgrown its facility on Garden of Eden Road in the Jewish Community Center Complex, the school expanded into the offices of the Jewish Federation of Delaware. The Jewish Federation vacated its offices to enable Einstein to expand. During the summer the expansion and renovation process was completed.

The school will celebrate its expansion and renovation at a champagne reception on Sunday, October 29th at 1:30 p.m. at the school. For further information contact the chairperson of the event, Mrs. Michelle Margules at the Einstein office 302-478-5026.

Entries for the Calendar of Events are due on the Thursday deadline, published in *The Jewish Voice*. Copy should be typed and double spaced. Entries are preferred on 3 1/2" floppy disk or via E-mail. Please include day, date, time, place, brief description, and contact person.



TEL AVIV PEACE ANNIVERSARY: TEL AVIV -- Israeli and Jordanian helicopters stage a joint flypast over Tel Aviv October 22 to mark the first anniversary of the two nations' peace treaty. The helicopters carry the nations' flags and a banner with the word "peace" before flying to the Jordanian capital city of Amman. RNS Photo/Reuters. Photo above.



CLINTON & RABINS: NEW YORK -- President Clinton and the first lady pose with Israeli Prime Minister Yitzhak Rabin and his wife, Lea, October 22 at a dinner during United Nations 50th Anniversary celebration. RNS Photo/Reuters.

WHO DO YOU CALL FOR FINE FOOD?



TAKE-A-BREAK
(302) 658-8571

The caterer who is attentive to every detail!

Kosher Style and Glatt Kosher Available

K

THE KUTZ HOME

A Medicare and Medicaid certified facility offering:

- 24-hour skilled nursing care
- Physical rehabilitation services
- Activities programs
- Kosher meals and snacks
- Sabbath and holiday services
- On-site beauty parlor

For more information about the Kutz Home, please call Shella Mensch at (302) 764-7000.

The Milton & Hattie Kutz Home, Inc.
704 River Road • Wilmington, DE 19809

When you can't breathe, nothing else matters!

AMERICAN LUNG ASSOCIATION
1-800-LUNG-USA

OBITUARIES

BEITMAN UNVEILING

An unveiling of the monument for Lore Beitman, wife of Robert Beitman, and mother of Barbara Beitman Beitman, will be held at Montefiore Cemetery, Rockledge, PA, on Sunday, November 12, 1995, at 11 a.m. Directions to the cemetery can be obtained by calling Dr. Breitman at (215) 947-5809.

DAVID L. KUSHELOFF

Veteran journalist David L. Kusheloff, died Sunday, October 15, of a heart attack in Christiana Hospital. He was 78 and lived in Mill Creek.

He was the Sunday "News and Views" editor and book editor at the Philadelphia Bulletin, retiring after 25 years when the paper closed in 1982. Kusheloff was formerly a member of the Editorial Committee of *The Jewish Voice*, in the early 1990s.

Mr. Kusheloff, who was raised in the Bronx, N.Y., began his career at the Washington Times Herald while serving in the Army Air Corps during World War II. Later, he worked for the Washington Post and Army Times, which was printed in Wilmington.

He moved to the Wilmington area and eventually left the Army Times for the Bulletin.

After his retirement, he worked at The News Journal before becoming executive director of New Castle County Funeral Directors Association in the late 1980s. Part of his

work for that trade group involved lobbying the state Legislature.

In a 1993 "Delaware Voice" column in The News Journal, Mr. Kusheloff defended Social Security, Medicare and the elderly. "so let all the old people of America, with the vigor that comes from rightful anger ... tell President Clinton that he can take his animosity toward old people and blow it out his saxophone," he wrote.

In the early 1960s, he was active in the Young Democrats of Christiana Hundred and the state federation of Democratic Club. He wrote several letters to The News Journal supporting then-presidential candidate John F. Kennedy and, after his victory, urged that Delaware schools close so youths could hear Kennedy's inaugural address.

In retirement, he enjoyed playing the piano.

He was a member of American Association of Retired Persons and the National Committee to Preserve Social Security and Medicare.

Survivors include his wife, Roslyn Kusheloff; a son, Stephen G. of Sunbury, Pa.; two daughters, Marjorie Kusheloff Hammet of Austin, Texas, and Judith Ann Kusheloff of Washington; two sisters, Roslyn Gutman of East Orange, N.J., and Yetta Breitbart of New Rochelle, N.Y.; and a granddaughter.

DR. MARK D. RAPPAPORT

Dr. Mark D. Rappaport, 62, of 2210 Baynard Blvd., Wilmington, died October 8 of leukemia.

Dr. Rappaport was a podiatrist for more than 35 years. He was a member of Alpha Epsilon Pi fraternity at U of D graduating in 1953. He was a 1957 graduate of Ohio College of Chiropractic, Cleveland.

He was a member and former president of Delaware Podiatry Society.

Survivors include his wife, Helen A. Rappaport; a son, Jerome P. of Orlando, Fla.; a daughter, Renee S. Rappaport McCord of Atlanta; and a sister, Jane R. Green of Kingsridge.

The family suggests contributions to the Leukemia Society, Wilmington.

Parent/Child Shabbat At Beth Shalom

Wilmington's Congregation Beth Shalom recently announced the inauguration of weekly parent/child services every Saturday morning from 10:00 to 11:00 A.M. The program is designed for children between the ages of one through seven years of age and will encompass the joy of Shabbat with stories, songs, and conclude with refreshments. Parents, grandparents and their children or grandchildren do not need to be members of Beth Shalom to participate. Individuals with special skills or interested in leading portions of the services will be most welcome. Beth Shalom is located at 18th and Baynard Boulevard, for more information please contact the synagogue office (302) 654-4462.



Participants in a recent elderhostel program at the JCC listen during a class session.

WERTHEIMER MONUMENTS

Serving the Jewish Communities of Delaware and Philadelphia for 56 years.
We install monuments on all Delaware Cemeteries

מצבות

Located in Philadelphia - Convenient to Wilmington, DE
6720 Bustleton Ave., Close to Betsy Ross Bridge
For Appointment Please Call
215-333-1222 1-800-886-1219
Open Daily And Sunday

CREATE A LASTING MEMORY Plant Trees in Israel

A Circle of Trees	\$100
A Ring of 5 Trees	\$50
Individual Tree	\$10

A Living Link to the Land of Israel

CALL (302) 655-5995
MARYLAND/DELAWARE REGION
4 Reservoir Circle, Baltimore, MD 21208

Schoenberg Memorial Chapels

In the hallowed tradition of our faith...

a dignified setting with reverence for customs and observances in strict accord with family wishes.

519 Philadelphia Pike
762-0334

When The Population Survey Calls, Please Answer The Phone

Lung Cancer Takes 16 Years Off a Life.
Give yourself some time. Quit now.

AMERICAN CANCER SOCIETY® 1-800-ACS-2345

HAPPY HARRY'S

Health Care, Inc.

Leading the Way With Service!

- 24 hour Emergency Service
- Free Set-Up and Delivery
- Medicare & Third Party Billing
- Walkers
- Diabetic Supplies
- Personal Care Products
- Ostomy Supplies

Three convenient locations

311 Ruthar Drive Newark, DE 19711 (302) 454-4941	Old Oak Center Dover, DE 19901 (302) 678-0504	16-A Trolley Square Wilm., DE 19806 (302) 654-8181
--	---	--

Call our Public Relations Department, 454-3390, for more information

BOYD'S FLOWERS

Where artists bring beauty to bloom

421-2900
824 Market St. Mall
2013 Penna. Ave.

ALAN GOLD

BOB GOLD

B. Reibstein Memorials Art Monument Company

1603 Jessup St.
Wilm, DE 19802
(302) 575-1450

Since 1895

1869 Cottman Ave
Philadelphia, PA 19111
(215) 725-2200

Delaware's only Jewish Monument Dealer
Manufacturing and Showroom in Delaware

Arafat Extends Olive Branch

Continued from page 1

Arafat became more focused in his remarks only in response to pointed questions from Lyss about his repeated use of the term "jihad," or holy war, in speeches to his constituents and about the clauses in the Palestinian National Covenant calling for Israel's destruction.

"You have to understand our terminology as I'm understanding Jewish terminology," Arafat said about his use of the term "jihad," which has angered and unnerved many American Jews.

Echoing previous explanations, Arafat said he was referring to a second type of jihad that follows the more traditional jihad on the battlefield.

"This is the grand jihad to build a state and deal with your neighbors, with civilians, with humanitarian needs," he said. He also said the offensive clause in the covenant was "caduc," using the French term for "null and void." When pressed, he said he would "definitely" convene the Palestine National Council after Palestinian elections to repeal the clause "if Israel is ready to let" all the members come to vote for the repeal. Under the latest agreement on extending self-rule in the West Bank, the Palestinians will hold elections in January.

Arafat wryly observed that he envied Prime Minister Yitzhak Rabin for having to contend with only one united opposition to his peace program. "I have many," he said. "We face Arab opposition, Palestinian opposition, Islamic opposition, even Christian opposition." Arafat said that despite efforts, he has been unable to secure any agreement with the fundamentalist Islamic group Hamas. The PLO and Hamas had reportedly been seeking an accord regarding upcoming Palestinian elections and curtailing terrorism.

He also talked about his people's poverty and starvation. "You don't know what that means," he said. "We live it." In response to Lyss' call to encourage an end to the Arab boycott of Israel, Arafat called on Israel to end its economic boycott of the Palestinians when it imposes a closure between Gaza and Israel, costing \$6 million a day. "It's a disaster for us," he said. "In spite of all the obstacles, we insist on continuing." Arafat's appearance seemed to satisfy those in attendance, many of whom support the peace process and were predisposed to understand his role in the process.

Toni Young, President of the Jewish Federation of Delaware, told *The Jewish Voice* that "The importance of his being there was it was a tangible evidence of the remarkable progress we have made in the peace process. I believe there is no other alternative to peace, there's no other option, so meeting with people like the chairman of the PLO is very important." Young added that, "This is such an extraordinary period of time when we are about to make peace, being at something like this is a reminder that we are a part of transitional moment in history." She said that, "Listening to him say what he had to say with his tone of voice and his body language was important. His tone of voice was one of someone who wanted to make peace." Young remarked that Arafat "treated the demonstrators like a nuisance factor

Vote on U.S. Embassy Signals Official Backing of United Jerusalem

Continued from page 3

decades long battle spearheaded by Sen. Daniel Patrick Moynihan (D-N.Y.), to recognize a united Jerusalem as Israel's capital. The Senate corrected "an absurdity which has endured for nearly half a century," Moynihan said on the floor of the Senate during debate of the bill. Anticipating charges that the bill would interfere with the peace process, Moynihan told his Senate colleagues, "It is inconceivable that Israel would agree to any proposal in which Jerusalem did not remain the capital of Israel."

The vote came after hours of Senate debate on the measure. Although there was no significant opposition to the move in principle, several lawmakers sought additional changes before they endorsed the legislation. At the same time, many senators sought to speak in favor of the measure. "This legislation is not about the peace process, it is about recognizing Israel's capital," Dole said on the Senate floor moments before the

historic vote. "Israel's capital is not on the table in the peace process and moving the U.S. Embassy to Jerusalem does nothing to prejudice the outcome of any future negotiations," said Dole, who first unveiled the measure at the American Israel Public Affairs Committee's annual meeting in May.

AIPAC, which aggressively lobbied members to support the measure, hailed its passage. "It brings U.S. policy in line with its long-held belief that Jerusalem should be recognized as Israel's capital and that our embassy should be moved there," said Neal Sher, executive director of AIPAC.

As the vote was being taken shortly before noon on Tuesday, Sen. Dianne Feinstein (D-Calif.), who had negotiated with Dole on behalf of the administration, huddled with Sen. Joseph Lieberman (D-Conn.). Both Jewish senators smiled broadly as the results were coming in, but there was no other show of emotion on the Senate floor after the results were

saying, 'We don't need the dramatics we need to move forward'."

"The specifics of what Arafat said were less important than the fact that he appeared before the organization that represents the grass-roots of American Jewry," said Robert Lifton, a vice chairman of the NJCRAC executive. "It is one more example of grass-roots support for the peace process," he said.

"It demonstrated in a public forum that the process of normalization continues," said Lawrence Rubin, executive vice chairman of the NJCRAC.

"Around the city people are asking, 'Does he mean it? Does he mean what he signed?'" Gail Pressberg, Washington director of Americans for Peace Now, said prior to Arafat's remarks.

"Arafat has got to convince people he's on a peace course in which he's going to do his utmost to deal with problems in his community, chiefly violence and terrorism," she said. Asked after his remarks whether he had achieved what she believed he had to, she responded with an unequivocal, "No question."

On the other hand, Rabbi Marla Feldman, director of the JCRC in Delaware, told the Associated Press "I appreciated that he didn't speak from notes, but he didn't say anything I hadn't heard before." She added "A lot of it was not quite satisfying."

The meeting did in fact generate protest from several organizational quarters.

The Zionist Organization of America issued a written statement saying, "No Jewish groups should meet with Arafat until he retracts his jihad remarks." The Union of Orthodox Jewish Congregations of America, a member of the umbrella NJCRAC, also issued a statement of protest and boycotted the meeting. It charged that the NJCRAC provided Arafat "with a public forum in which to present the PLO's position and his own version of events with little or no opportunity for the representatives of the Jewish community to challenge his presentation or

to ask in adequate fashion the crucial questions relating to the PLO's ongoing and serious failure to comply with its agreements."

But Martin Raffel, the NJCRAC's associate executive vice chairman, defended the meeting.

"Once the PLO became Israel's peace partners it didn't occur to us we shouldn't meet with them," he said. On the contrary, Raffel said, "there has to be an opportunity to enable our leadership to meet with Arafat and share its concerns directly. There has to be honest dialogue."

The ZOA and Orthodox Union are members of the Conference of Presidents for Major American Jewish Organizations, which planned to send a delegation to meet privately with Arafat on Tuesday. That meeting was expected to focus on some of Arafat's language, ongoing Palestinian terrorism, the Palestinian covenant and other issues of compliance with the agreement with Israel.

A recent survey by the American Jewish Committee showed that in spite of the NJCRAC's warm reception of Arafat, Jewish public opinion about the PLO is skeptical.

Some 71 percent surveyed said they do not believe that the PLO "can be relied upon to honor its agreements and refrain from terrorist activity against Israel." A full 91 percent said the PLO is "not doing enough to control terrorist activity against Israel by Hamas and other Palestinian extremist groups."

(Dan Weintraub contributed local portions of this article.)

read. Declaring that "Jerusalem should be recognized as the capital of the State of Israel," the measure directs the State Department to set aside \$25 million in 1996 and \$75 million in 1997 for the construction and other costs associated with moving the embassy.

The bill also declares that Jerusalem "should remain an undivided city in which the rights of every ethnic and religious group are protected."

Within 30 days of the measure becoming law, Secretary of State Warren Christopher must submit a report to Congress that includes a timetable for construction and an estimate of the necessary funds.

Many American Jewish groups supported the goal of the legislation but withheld endorsement of the original bill that required groundbreaking to begin in 1996, fearing it would impact the peace process and insert partisanship into the status of Jerusalem.

After the vote, however, virtually all Jewish organizations expressed support for the bill. "This is an historic occasion. Something we have sought for many years is now a reality," said Malcolm Hoenlein, executive vice chairman of the Conference of Presidents of Major American Jewish Organizations.

At least one Jewish group, however, expressed disappointment. The Zionist Organization of America criticized Congress for dropping the provisions that required construction to

start next year. "We are deeply disappointed that President Clinton has pressured congressional leaders to virtually cripple the Jerusalem embassy bill by adding presidential waiver language, thereby reneging on his 1992 campaign promise to recognize all of Jerusalem and the sovereign undivided capital of Israel," said ZOA President Morton Klein.

Arab American groups also criticized the measure. They had urged members to vote against the bill in a full page ad in the Capitol Hill newspaper Roll Call. The legislation "is inappropriate and can only have a negative effect on future peace negotiations," wrote Khalil Jahshan, executive director of the National Association of Arab Americans. "No single religion has a greater claim to Jerusalem than any other."

Sens. Robert Byrd (D-W.Va.), Mark Hatfield (R-Ore.), John Chafee (R-R.I.) and James Jeffords (R-Vt.) voted against the measure, citing concerns that it would impact the peace process. Sen. Spencer Abraham (R-Mich.), the only Arab American in the Senate, also voted against the measure, saying that it prejudices the outcome of the peace talks.

Sen. Bill Bradley (D-N.J.), a co-sponsor of the measure, was not present for the vote. The other missing vote was because of the empty seat of Sen. Bob Packwood (R-Ore.), who resigned from the Senate earlier this month. His seat has not yet been filled.

ADVERTISE IN **CLASSIFIED SECTION**

(FAX NO. 427-2438)

ALL CLASSIFIED ADS WILL HAVE AN APPROPRIATE HEADING AND BE BOXED AS SHOWN:

<p>Actual Size 2 cols x 1 inch</p> <p>(\$8.00)</p>	<p>Actual Size 2 cols x 2 inches</p> <p>(\$16.00)</p>
<p>Actual Size 2 cols x 1-1/2 inches</p> <p>(\$12.00)</p>	<p>To Place A Classified Ad, Phone 427-2100 Ask For Irv</p>

ROOM-MATE WANTED

2 Bedroom apt. N. Wilmington. Private Entrance/Balcony. W/D. Smoking OK. Must like cats. Available now. (302) 477-1302 (leave message)

ISRAEL BONDS

For sale, reinvestment and redemption information call:

1-800-752-5671

The **JEWISH VOICE** NOW ACCEPTS

and

FOR ADVERTISING ONLY

FOX VALLEY SUPER

Thriftway[®]

PRICES EFFECTIVE
FRI., OCT. 27th thru SAT., NOV. 4th

5% SENIOR DISCOUNT
62 or Older (I.D. Required)
TUESDAYS and WEDNESDAYS

We offer a synagogue discount program.
Call Mr. Fagan at 761-9620.

**A
P
P
Y**

Fresh Sliced *Reg. or Nova*
LOX \$9⁹⁹ LB.

Smoked Jumbo

WHITEFISH or CHUBS \$5⁹⁸ LB.

FRESH WHITEFISH SALAD or KIPPERED SALMON SALAD **\$5⁹⁸** LB.

SMOKED **WHITING \$3⁴⁹** LB.

Fresh CHOPPED **HERRING \$3⁹⁸** LB.

STORE SLICED KOSHER **SALAMI \$5⁹⁸** LB.

STORE SLICED KOSHER
TURKEY BREAST \$5⁹⁸ LB.

BAKERY

16 OZ. LOAF JEWISH **RYE BREAD \$1⁴⁹**

16 OZ. LOAF **CHALLAH \$1⁸⁹**

10 OZ. PKG. APPLE **STRUEDDEL \$1⁹⁹**

NEW YORK STYLE ASST. TOPPINGS

CHEESE CAKE \$6⁹⁹ 32 OZ.

PRODUCE

STAR RUBY
GRAPEFRUIT 2 FOR 99¢

FRESH **LEEK \$1⁹⁹** BUNCH

MACINTOSH **APPLES 79¢** LB.

NEW CROP

LOUISIANA YAMS 2 LBS. 99¢

MEAT

EMPIRE Kosher

FRESH BONELESS
CHICKEN BREAST \$4⁹⁹ LB.

EMPIRE Fresh Kosher

WHOLE FRYING
CHICKENS \$1⁶⁹ LB.

EMPIRE Fresh Kosher

CHICKEN WINGS \$1¹⁹ LB.

2 LB. BAG 'WHOLEY'
FROZEN KOSHER
WHITING FISH FILETS **\$2⁹⁹**

GROCERY

TETLEY **TEA BAGS 100 COUNT 99¢**

LUCKY LEAF 46 OZ. BOTTLE
APPLE JUICE 2 FOR \$3

2 LITER BOTTLE ALL VARIETIES
PEPSI 79¢

CARNATION
COFFEEMATE \$1⁷⁹ 16 OZ. JAR

DAIRY

8 OZ. PHILADELPHIA
CREAM CHEESE 79¢

16 OZ. PENN MAID
SOUR CREAM 79¢

LAND O' LAKES
BUTTER 1 LB. PKG. \$1⁷⁹

DANNON 8 OZ.
TRADITIONAL
YOGURT 2 FOR \$1

REDBOOK
Florist Services
The Masters of Arrangement[®]
Flowers-by-Wire Worldwide

FLOWERS BY ELAINE

CHEERFUL AUTUMN BOUQUETS **\$4⁹⁹** EA.

DRIED EUCALYPTUS **\$4⁹⁹** 1/2 LB. BUNCH

4 INCH MINI ROSES **\$3⁹⁹** BUNCH

10 INCH FOLIAGE HOUSE PLANT

\$12⁹⁹ EACH

FREE CONSULTATION ON BRIDAL AND BAR/BAT MITZVAH FLORAL ARRANGEMENTS

Call Stephen Glickman **762-3400** at **SUPER Thriftway**

YES, WE DELIVER!

Former SEARS Location

Route 13 and Lea Boulevard, Wilmington
OPEN DAILY: 7AM - 11PM Sunday 7AM - 9PM

DOUBLE COUPONS

NOT RESPONSIBLE FOR TYPOGRAPHICAL ERRORS