

Historical Soc Of De  
505 Market St  
Wilmington, DE 19801  
SAMPLE *Kavin - Library*

## Leadership Appointed, Goals Set For 1989 Campaign

By ROBERT N. KERBEL

Stephen E. Herrmann, Jewish Federation President has announced the appointments of Richard A. Levine and Henry Topel as 1989 Campaign Co-Chairmen and of Henry Beckler as Major Gifts Chairman.

In accepting the appointment Levine stated that in the last 15 years the campaign has only increased from one million to \$1,200,000 - a 20 percent increase - while inflation has increased at least 100 percent. The needs of our agencies have increased with inflation but our ability to fund these needs has obviously not kept up. He commented that as a result of the failure of past campaigns to grow, 1988-89 not only failed to fully fund services in our own community, but provided the smallest ever percentage of the campaign for the social service and educational needs of Israel.

"The Kutz Home, which accepts those who need their facility regardless of personal financial ability to pay for actual costs and which has experienced a tremendous increase in the cost of nursing services, had a deficit in fiscal 1988 of \$150,000 (\$100,000 more than it had budgeted); for 1989 it faces a \$260,000 deficit," Levine stated. "To meet this need and fulfill our time-honored responsibilities to the other local agencies and to the United Jewish Appeal, the community must raise a minimum of \$1,500,000 - a 25 percent average increase over 1988. Given the growth of our community and its resources over the past 15 years this is a goal I know we can attain."

Henry Beckler added that the initial solicitations of some of the major gifts have indicated a 38 percent increase but stated that everyone in the community must do his or her share. Many have not increased their contributions in five or more years, according to Beckler.

"It is the duty of every Jew to help those less able than ourselves," Topel stated. "The Talmud states that even the poorest among us must fulfill the obligation of Tzedakah."

Levine is a Vice President of the Federation, past



Henry Beckler

Co-Chairman of its Leadership Development Program, Mission Chairman and past President of Beth Shalom Congregation. He is a partner in the law firm of Young, Conaway, Stargatt and Taylor.

Henry Topel is a member of the Federation Board of Directors and past chairman of the Delaware State Democratic Party. He was the 1988 Major Gifts Chairperson. He is a Vice-Chairman of the Board of Directors of Beneficial National Bank.

Henry Beckler was the 1988 Campaign Pacesetter Chairman. He is Director of Corporate Special Services of the Bank of Delaware, a Director of Delaware State Arts Council, a Director of Delaware Center for Contemporary Arts, a Director of the Wilmington Economic Development Corporation and a member of the Governor's International Trade Council.

## AIPAC Denies Role In Partisan Activities On Behalf Of Israel

By DAVID FRIEDMAN

WASHINGTON (JTA)—The American Israel Public Affairs Committee has been vigorously asserting last week that it does not participate in partisan political activities as part of its lobbying on behalf of Israel.

AIPAC is seeking to counter a report on CBS-TV's

"60 Minutes," due to be aired in coming weeks, which charges that it directs pro-Israel political action committees in their contributions to candidates running for the U.S. Senate and House of Representatives.

Despite the fact that "PAC" forms part of AIPAC's name, the organization is not a political action committee. PACs donate money to political candidates. AIPAC is a non-partisan, registered foreign lobby for Israel in Washington.

The "60 Minutes" report, by Mike Wallace, is expected to focus on the Senate race in Rhode Island, where Richard Licht, the Democratic lieutenant governor, is running against the incumbent, Sen. John Chafee, a Republican. Money from pro-Israel PACs has gone almost exclusively to Licht.

Wallace apparently has an internal memo from AIPAC that he says proves the organization has been urging financial support for Licht. The memo, which has been made public by the Washington Jewish Week and The Washington Post, also reportedly urges reporters to ask the Rev. Jesse Jackson if he has had extramarital affairs.

In addition, Wallace also reportedly has been drawing attention to attacks on Chafee led by Morris Amitay, a former executive director of AIPAC and a member of its executive committee. Amitay, a pro-Israel lobbyist and treasurer of the Washington Political Action Committee, has criticized Chafee's record on Israel and arms sales to Arab countries, both in interviews and in a column he writes for Jewish weekly newspapers.

Asked in a telephone interview whether AIPAC has urged him to make such attacks, Amitay responded: "Do you think I have to get guidance from anyone?" Noting that he has been involved in pro-Israel causes on Capitol Hill for 20 years, Amitay said, "I know the people intimately," as well as their voting records.

Rabbi Israel Miller, an AIPAC vice president interviewed by Wallace, said in a telephone interview that he told the CBS journalist AIPAC does "not coordinate PACs, we do not rate candidates, we do not endorse candidates." What AIPAC does is to provide information on incumbents' voting records on issues of concern to the Jewish community, Miller said.

"We are not anti-Chafee," Miller maintained. He (Continued to Page 15)

## 27 Parties On Israeli Ballot, Kach Waiting For Ruling

By DAVID LANDAU

JERUSALEM (JTA)—The Central Election Committee gave its formal approval last week to 27 party lists that will compete in the Knesset elections on November 1. The fate of a 28th, Rabbi Meir Kahane's Kach party, is in the hands of the High Court of Justice.

The court is hearing arguments on an appeal of the election committee's decision to disqualify Kach from running. Kahane's faction was barred from the election on grounds that it is racist and opposed to the democratic nature of the state.

Likud, meanwhile, is beginning to show internal stresses and strains as the fiercely fought election campaign enters the final stretch. Its conduct has been criticized by two of the party's most powerful men, Housing Minister David Levy and Commerce and Industry Minister Ariel Sharon, both of the Herut wing.

Considering their political clout, neither has done much campaigning. Levy has yet to appear on the nightly Likud television broadcasts. On October 11, he publicly derided the party's campaign jingles and other gimmicks.

Sharon flew off to Hungary on October 12 for a weeklong visit. He had returned only a few days before from a trip to Bulgaria. His supporters are increasingly critical of the Likud campaign chairman, Moshe Arens, a close ally of Premier Yitzhak Shamir. They charge that Shamir-Arens backers, such as Benjamin Begin and Herut Knesset members Ronni Milo, Dan Meridor and Ehud Olmert, are promoting themselves to the exclusion of the party's other factions.

There has been criticism, as well, as overall campaign strategy. This prompted Shamir to issue a state- (Continued to Page 15)

### Analysis

## Election Ads A Study In Excess

By DAVID LANDAU

JERUSALEM — Israel's election campaign began Oct. 4 as a low-key, dignified appeal to the electorate. It then slid rapidly downhill into lunges for the jugular.

Labor and Likud first mounted their campaigns on radio and television by projecting themselves as moderate, responsible and statesmanlike.

Each party portrayed its leader — Premier Yitzhak Shamir of Likud and Foreign Minister Shimon Peres of Labor — as a thoughtful, temperate man.

Labor dwelt on its success — and Likud's failure — to extricate the Israel Defense Forces from the unpopular war in Lebanon.

Both parties claimed credit for beating down inflation, and both avoided insults and invectives.

Television viewers assumed that Likud campaign manager Moshe Arens had decided to pursue a moderate policy in defiance of the party's firebrands, who were crying for blood.

They were wrong.

On Oct. 5, Likud commercials showed provocative footage of Arab rioters waving Palestinian flags, spliced with film clips of a gun-toting Yasir Arafat and close-ups of Peres. The subtle message was that Peres in power would lead to a Palestinian state and the destruction of Israel.

Defense Minister Yitzhak Rabin appeared for the Labor party, refuting Likud charges that Labor wanted to return Israel to its pre-1967 borders.

Rabin pointed out that he was well-qualified to say that no Labor government would again allow Israel's population centers to come within close range of enemy forces. (Continued to Page 15)



Newspaper ads make the case for Labor (left) and Likud.

Inside this issue...

Newcomers' Guide to the Delaware Jewish Community

# OPINION

## Editorial: Prayer Is Prayer

Christmas and Easter are Christian religious holidays. But they are also major cultural and commercial anchors in the United States.

Given the wide range of religious beliefs among students, to what extent should public schools foster the celebration of these holidays? The answer seems pretty clear: Public schools should be neutral on religious celebrations.

Putting such a rule into practice is not so simple as the Christina School District is finding out.

The cultural dominance of Christianity in the United States — Delaware included — means that the majority of children in public school come from that tradition.

Until relatively recently this cultural dominance was a license to interpose Christian religious practices in school activities. Jewish children, Muslim children or the children from atheistic families either went along or were ostracized. The practice was at worst cruel and at best unfair.

It is no longer permissible.

The First Amendment to the Constitution forbids the establishment of religion and the U.S. Supreme Court has ruled that organized prayer or religious services in public schools are unconstitutional. The singing of Christian religious songs and encouraging participation in Christian religious ceremonies are substantially no different than recitation of Christian prayer.

Some parents from Temple Beth El in Newark recently raised questions about school holiday programs that overlook religious implications. For the Jewish child or the Muslim child, the celebration of Christmas and Easter has no personal validity. No more than celebration of Hanuka or Ramadan would have for a Christian child. Yet as the Christmas holidays approach, many schools plan music and drama programs focusing on celebrating the birth of Jesus Christ.

The concern of the Jewish parents is valid. They don't want the public school system to place their children in the awkward and unfair position of having to decline to participate in school activities — activities which are fundamentally religious and outside their religious traditions.

The Christina school officials responded intelligently. A committee of parents and school officials met and came up with some suggestions for dealing with the issue. Among other things, the committee suggested "Winter Holiday" programs instead of "Christmas" programs; "Spring Holiday" programs instead of "Easter" programs. That makes sense. It permits all children to participate without feeling guilty. In fact, some schools already do this.

Someone, apparently serious, asked how to explain the Easter Bunny was now the Spring Bunny. The bunny has about as much to do with Easter — the central, most important Christian religious holiday — as the statue in Rodney Square. Besides, such ridiculous side issues obscure the important central ones: religious freedom and tolerance and the fundamental principle of separation of church and state. Surely, the children will find as much pleasure and enjoyment singing seasonal holiday songs like *Jingle Bells* as religious songs.

It is truly frustrating and frightening that people refuse to recognize that this nation was founded on principles that do everything possible to prevent the tyranny of the majority in both religious and political matters.

(Reprinted with permission from *The News Journal*, October 13)

## Let Off Steam Write A Letter To The Editor

### The Jewish Voice

Published semimonthly, and monthly in July and August,  
by the Jewish Federation of Delaware.

Editorial opinions expressed in this newspaper are those of the newspaper and not those of any individual. Signed editorials do not represent the view of the newspaper but rather express the view of the writer.

#### Editorial Committee:

Toni Young, Chairman

Stanley W. Balick, Terry Dannemann, Ceceil Ehrlich, Nisson Finkelstein,  
William P. Frank, Marga Hirsch, Mike Lazarus

Paula Berengut, Editor

Amalia Snyderman, Advertising Manager

Robert N. Kerbel, Executive Vice President

No material will be accepted by the Jewish Voice which is considered against the best interests of the Jewish community.

Jewish Federation of Delaware

101 Garden of Eden Road, Wilmington, DE 19803 (302) 478-6200

Subscription Price \$7.50

Circulation, 3,200

Member of the American Jewish Press Association



## Letters to the Editor

### Chabad Calendar Raises Questions

The mailing of the Jewish Art Calendar by the Chabad Lubavitch of Delaware and its prominent letter of appeal for funds raises some troubling questions. The letter of solicitation is signed by more than a dozen eminent leaders of our Delaware Jewish community. Many conspicuous in the activities of our Jewish Federation of Delaware, including the current and some past presidents.

Are they not aware of the Lubavitcher Rebbe is probably the single most aggressive of the extremists in the drive in Israel to have the Knesset amend the Law of Return so as to deny to any Reform, Conservative or Reconstructionist Rabbi the right to perform a conversion that would be recognized in Israel?

Under present law Israel extends citizenship to any Jew (including Reform, Conservative and Orthodox converts) who emigrate to Israel. The clear purpose of the amendment is to discredit all non-Orthodox Rabbis and to delegitimize their Judaism. They

have been working with increasing fanaticism to prevent the State of Israel from becoming an open society.

I know that Rabbi Vogel and his wife are an attractive and personable couple. And, I concede that some of their activities, such as hospital visitations and student outreach seem to fill a void. But to me, their ingratiating efforts to insinuate themselves into our open and tolerant community are a mockery in the light of the implacable hostility of the Chabad Lubavitch attitudes and actions in Israel.

In any case, I find it most offensive and inappropriate that a mailing list of the Jewish community should have been provided the Chabad Lubavitch of Delaware. There have been prior instances where the Jewish Federation of Delaware and the Jewish Community Center, which represent the entire Jewish community, have been altogether too supportive of the Chabad Lubavitch of Delaware.

Harold Snyder

### Local Teacher's Thoughts On Holocaust Seminar

This summer I was one of 45 participants in a unique course on "The Holocaust and Resistance." The three week course, held in Israel, included Jewish and non-Jewish teachers from 17 states. (See related article, page 10.)

For four years, the American Gathering of Jewish Holocaust Survivors, along with the Jewish Labor Committee has sponsored this in-depth seminar for American teachers, who are exposed to a wealth of information provided by resistance fighters, camp survivors and world renowned scholars. Classes were held at the Ghetto Fighter's Museum near Nahariya and at Yad Vashem in Jerusalem.

Education experts from Yad Vashem reviewed teaching techniques for us to try with our students and at all times we were treated royally by our hosts who were genuinely pleased that American teachers would be willing to spend three weeks in Israel for this course.

The setting in Israel was appropriate for several reasons and most participants gained additional lessons by getting to experience, for the first time, life in the Jewish State. I must add em-

phatically that no one in the group, including a group of non-Jews who had never travelled out of their small Texas town, ever felt hesitant, afraid or reluctant to visit any sites in Israel and many stayed on to visit some areas on their own. Sometimes the American media is not successful in scaring people away from Israel.

In February, all 148 past participants of the summer seminars will be invited to an alumni conference in Washington where we can exchange teaching strategies which have been successful. Although my local school district has denied my request to share, teach and use my newly acquired information, I have heard from fellow participants of how they are integrating lessons of The Holocaust and Resistance into their teaching. The exposure of American students to Holocaust education is what the sponsors, the American Gathering of Survivors, hopes for. My travel and participation was also subsidized by the generosity of The Kutz Foundation and The Finger/Gordon Memorial Trust Fund.

Joel Glazier

# On the other hand



N. Even Or

## Kaddish And Science — Physics And Faith

How can someone trained to an advanced level in science, someone using logical analysis in all his professional work, also maintain "blind and unreasoned faith" in his religious beliefs? In one form or another this is the question sooner or later asked of the scientifically trained man or woman who professes a commitment to traditional Judaism. In a way it is the question which the great Moshe ben Maimon, Maimonides, dealt with in his treatise, *Guide to the Perplexed*, 800 years ago. I would like to attempt a brief and personal response.

To begin with, during the past half century science has been astoundingly successful in advancing our understanding of the material world and bringing forth new technology that has drastically changed our lives. In communications, transportation, medicine and entertainment, things undreamed of 50 years ago are now commonplace. We have landed men on the moon, explored the far reaches of our solar system and modified the genetic structure of living organisms. The potential for further enhanced understanding of the material world and ability to modify it seem to stretch endlessly before us. It is tempting to believe that someday we will understand "everything" and obsolete the necessity for God in our lives; after all, maybe He exists, maybe He doesn't; let's keep an open mind without prior commitment. It is temp-

ting, indeed, but not very sound reasoning.

While science has been impressively successful in that range of human experience in which it is applicable, there are broad areas of human experience in which it is not applicable; ethics and morality, for example, and aesthetics as well. Science is neither, in and of itself, good or bad. It is neither moral nor immoral. In fact, it was this very problem that bothered such physicists as J. Robert Oppenheimer when the first atomic bomb was exploded. I remember hearing him speak at the American Physical Society and say that, in developing the bomb, "we physicists have known sin," a rather amazing statement for a scientist who observed no religious affiliation — or was it? What do we do in these broad and critical areas of human experience in which science and the scientific method are not applicable? Do we ignore them, act as if they aren't there? We can't, because our failure in ethics and morality seem, at times, to have overwhelmed our successes in controlling the material world. I know that for me this is the place where faith enters and is essential.

Moreover, is there not a major underlying act of faith required to engage sensibly in science at all? In seeking to understand the laws that govern the material world, we have to assume that such laws exist, that there is an order, a predictability to the universe, that if  $E = mc^2$  today, it will

also be true tomorrow. We really have no scientific basis for that act of faith, except that without it we can't move ahead. And perhaps this is the basis on which all men of faith, religious faith as well as scientific faith, base their faith; that without it they cannot move ahead. In discussing this question of science and faith with someone recently, he told me that the only prayer that really moved him was the Kaddish. His comment fascinated me, because it is in the last sentence of that ancient prayer that is embedded what I might call the scientist's act of faith. We say, *Oseh shalom bimromov*, He Who makes *shalom* in the celestial heights, may He bring *shalom* to us and to all Israel. The word *shalom* means not just peace in the sense of absence of war; it means harmony and order. We are not praying to God as the One Who prevents wars among the stars and planets, but as the One Who maintains harmony and order in the universe. When we recite that verse of the Kaddish we profess our faith in the foundation on which all science and scientific endeavor rest.

Of course, those who argue the inconsistency of religious faith with a rational scientific approach to life, will say that it is a long way from faith in some sort of preexistent harmony and order to faith that encompasses prayer and ritual observance. The way is not long at all; tortuous perhaps, but not long. It is traversed step by step as we reach to

understand the God Whose harmony and order and miracles are in all things. It is not surprising, in this sense, that Albert Einstein spoke so frequently of God in connection with his monumental work in theoretical physics. "God," he said, "does not play dice with the universe," in explaining his intuitive opposition to Werner Heisenberg's uncertainty principle. And, in disagreeing with a long and complex formulation of Hans Bethe's, "God is sophisticated, but not malicious!"

There are many paths to God. Some approach through the path of science, some through philosophy, some through ritual, some through social responsibility, and some, indeed, through all of these together. But, whatever the approach, it ends in faith. For me this is perhaps most beautifully described in the words which God speaks through His prophet Hosea, words which the traditional Jew repeats each time he wraps the *tefillin* strap around his finger:

*I will betroth you to myself forever;  
I will betroth you to myself in righteousness and in justice, in kindness and in mercy;  
I will betroth you to myself in faith;  
And you shall know the Lord.*

Whatever the steps we take to God, they end in the last great step of faith. It is a step which invites each of us to ascend, including the man of logic and science.

## ENDOWMENT

Present tax laws make it possible to set up a charitable trust which provides the donors with retirement income and eventually benefits the Jewish community. Couples in their mid-thirties who have lost their IRA tax advantages can do well by donating \$2000 a year to such a trust. By establishing a Charitable Remainder Trust with initial contributions of \$2000 each the couple can build a sizable retirement fund and reap tax benefits in the short term. If they keep up donations for 30 years they can receive retirement income of \$28,000 annually with a total post-tax income after retirement of \$800,000. The charitable trust will be worth over \$800,000. Older couples can also set up similar trusts with sizable retirement income possibilities. These retirement programs are especially attractive for individuals who are charitable-minded but do not have the assets to make one large gift. By using tax planning to multiply their giving they benefit themselves as well as their favorite charities. For more information on charitable remainder trusts call Connie Kreshool, Endowment Director, at the Jewish Federation of Delaware, 478-6200, or consult your tax advisor.

## Hearts Of Darkness

Those who care little about freedom and democracy — for others — talk instead about peace and justice, pretending that the latter can be separated from the former.

Those who rarely, if ever, have bestirred themselves on behalf of the many oppressed minorities in the Arab-Islamic world — let alone on behalf of the Jews — now find in Israel's control of the West Bank and Gaza Strip one of the world's premier civil rights violations.

Examples: This November voters in San Francisco will be asked to support the establishment of an independent Palestinian Arab state in the territories; those across the bay in Berkeley get a chance to vote for a "sister-city" relationship with the Gaza town of Jabaliya and the refugee camp of the same name.

In the Boston suburbs of Cambridge and Newton, the electorate will decide whether to call on its Congressmen to demand that Israel end its "violations of Palestinian human rights and its occupation of the West Bank and Gaza," that Congress stop "all expenditure of U.S. taxpayers' money for Israel's occupation" and endorse "the establishment of an independent Palestinian state in the West Bank and Gaza..."

Supporting literature makes it clear that proposition "W" in San Francisco, measure "J" in Berkeley, and ques-

tions 5 in Cambridge and in Newton, Mass. all promote "peace, justice, and human rights in the Middle East." This includes security for Israel, the "Yes on W" committee claims.

If it were just the left-of-liberals in San Francisco and Berkeley, just Cambridge and Newton, the rest of the country could respond with a collective yawn. But attention must be paid. Both metropolitan areas are news media and academic centers — home to opinion leaders.

Unfortunately, as some analysts of communications psychology have noted, where the uneducated see only the black and white of a question, missing its subtleties, the educated, caught up in nuance, see only gray. Eventually, some become unable to distinguish black from white.

The sponsors of the various issues hope to capitalize on that inability, or unwillingness, to tell right from wrong.

Proposition "W," for example, has attracted backers from Arab-American groups which spend most of their time on Israel-bashing: apologists for PLO Chairman Yasir Arafat like former Reps. Paul Findley and Paul McCloskey; church groups long indifferent to the legitimate rights of the Jewish people in Israel; a variety of self-described peace activists; and deceptively labeled groups like New Jewish Agenda.

They assert that "the conflict is rooted in the struggle of two oppressed people seeking security and peace in the same land."

But they are silent about the fact that Arabs have long held three-quarters of that land — old Palestine — as Jordan. They are silent as to how Israel came to be in control of the West Bank and Gaza — by successfully resisting Arab aggression.

They say nothing about the oppres-

sion of Palestinian Arabs by other Arabs — both before 1967, when Jordan and Egypt illegally occupied the West Bank and Gaza Strip, respectively, and now in Syria, Jordan, and Lebanon. Friends of proposition "W" — and measure "J" — dare not open their mouths about decades of PLO tyranny over the Palestinian Arabs, including forcing them to remain in squalid refugee camps after Israel offered resettlement opportunities nearby.

Their lips are sealed, too, about the fact that while Israel debates how to make peace, the Arab world, except Egypt, still has not said explicitly that it will make peace. They ignore the violent factional split within the PLO over whether or not to accept, four decades too late, U.N. Security Council Resolution 181 — the 1947 partition plan that the Palestinian Arabs and Arab states aborted by war.

The world does not hang on ballot questions such as these, local conceit notwithstanding. But they are stalking horses.

They have nothing to do with peace and justice for Palestinian Arabs — witness the disinterest in this subject when Israel is not involved, as in the Shi'ite-Palestinian fighting in Lebanon. They have everything to do with an attempt to weaken the link between Israel and its only important ally, the United States.

## Candle Lighting

OCTOBER  
21st - 5:56 PM  
28th - 5:47 PM  
NOVEMBER  
4th - 4:39 PM

### THE JEWISH VOICE (USPS-704160)

Second class postage paid at Wilmington, De. Published semi-monthly, and monthly in July and August, by the Jewish Federation of Delaware, 101 Garden of Eden Rd., Wilmington, De., 19803. Subscription price \$7.50. Mailed to subscribers who are contributors to the Jewish Federation of Delaware. POSTMASTER: Send address changes to The Jewish Voice, 101 Garden of Eden Rd., Wilmington, De. 19803. (302) 478-6200.

### DEADLINE

The next issue of The Jewish Voice will be published FRIDAY, NOVEMBER 4. The deadline for stories and photos is noon, FRIDAY, OCTOBER 28. Material should be sent or brought to the Jewish Voice office at the Jewish Federation of Delaware, 101 Garden of Eden Rd., Wilmington, 19803. (302) 478-6200. All articles must be typed, double spaced.

## Federation Wins Award For Concert Invitation



The Council of Jewish Federations has announced that the Jewish Federation of Delaware is among the 1988 recipients of the Awards for Excellence in Public Relations. The award, which will be presented at the General Assembly of the Council of Jewish Federations in November, was won for the invitation to the Jerusalem Symphony Orchestra concert in May. The concert was one of the Delaware community's celebrations of Israel's 40th Anniversary.

Stephen E. Herrmann, President of the Jewish Federation of Delaware, will accept the award at the General Assembly in New Orleans.

Federation Executive Director Robert N. Kerbel said, "The celebration of Israel's 40th Anniversary with the Jerusalem Symphony Orchestra concert was very exciting for the Delaware Jewish community and it was our intention that the invitation would reflect both our enthusiasm and our pride in Israel's accomplishments." He added that the Federation is very pleased that its efforts have been recognized on the national level.

The invitation was designed by Nancy Sherr of Ludington and Company, a Wilmington design and public relations firm. Competitors included Jewish Federations throughout North America and awards were announced in nine different categories of public relations materials.

## Youth Charged With Vandalism Of Shul To Be Tried As Adult

NEW YORK (JTA)—A 15-year-old youth, one of two accused of vandalizing and burning a Brooklyn synagogue last month, will be tried as an adult, it was announced here October 3.

This means that the suspect Louis Franceschi, who has been indicted by a grand jury, will stand trial in state Supreme Court, instead of Family Court, where juveniles are normally tried. He also will face more severe punishment if convicted.

Franceschi was arraigned in Supreme Court on October 3. He is charged with second-

degree burglary, second-degree criminal mischief and first-degree reckless endangerment, all felonies, and with two misdemeanors. Franceschi pleaded not guilty and was ordered held on \$10,000 bail by Justice Richard Goldberg.

The indictment charges that on the night of Sept. 16, during the period between Rosh Hashanah and Yom Kippur, Franceschi and a companion broke into Congregation Rabbinical Institute Sharai Torah, an Orthodox synagogue in the Midwood section of Brooklyn. They spray-painted swastikas and anti-Semitic graffiti, remov-

ed the congregation's Torahs from the ark and set them on fire.

Franceschi's 11-year-old companion was not identified because of his age. His case will be heard in Family Court. If found guilty of the burglary charge, Franceschi could be sentenced to between 28 months and seven years in prison.

Brooklyn District Attorney Elizabeth Holtzman, who announced the indictment, warned that "crimes of hatred or bigotry of any kind must be prosecuted to the fullest extent of the law."

## Senate Adopts Anti-Genocide Law

WASHINGTON (JTA) — The Senate adopted enabling legislation late last Friday that will allow the United States to comply with an international treaty outlawing genocide. The measure was approved by voice vote. President Reagan, who supports the treaty, is expected to sign the bill into law.

The Senate vote was the final step in a process that began 40 years ago when President Harry Truman first proposed the treaty. Since then it has been adopted by 97 countries. But United States failed to ratify the pact, largely because of opposition from conservatives in Congress, who claimed it might infringe on America's sovereignty.

The Senate finally approved the treaty in February 1986. The measure passed will amend the U.S. Criminal Code to include penalties for genocide, which it defines as deliberate intent to destroy all or part of a national, ethnic, racial or religious group.

The treaty was a direct

response to the Nazis' extermination of 6 million European Jews during World War II, which gave the term genocide wide currency. The maximum penalties for genocide under the amended U.S. code are a \$1 million fine and life imprisonment for a killing, and a \$1 million fine and 20 years' imprisonment for attempting to cause physical or mental impairment.

The enabling legislation was blocked in the Senate Judiciary Committee for six months, mainly by Sen. Strom Thurmond (R-S.C.), who insisted that the legislation impose the death penalty on those convicted of genocide.

Sen. William Proxmire (D-Wisc.), who crusaded for the treaty daily during his 19 years in the Senate, argued for enabling legislation with life imprisonment.

Thurmond withdrew his demand after committee Democrats agreed to expedite the confirmation of federal judges appointed by Reagan.

## Torah Portion

### Vayerah

By RABBI CHUNI VOGEL

In the beginning of this week's Sidra, Vayerah, we read how God came to visit Abraham, and as explained by our sages, it was the third day after his circumcision. Abraham noticed three people walking in the distance and ran to offer them food, drink and rest. The three men, although noticing that Abraham was not in good health at all, took up the offer. They saw such sincerity in Abraham's request that to refuse, they thought, would only hurt this ill man.

The Torah, further on in this Sidra, describes Abraham's hospitality in these words: "And he planted (or 'set up') an *eishel* in Beersheba." Various interpretations are given to the word *eishel*. The simplest is that it denotes a large many-branched tree, which Abraham planted to provide protection from the hot desert sun (Beersheba is in the southern, desert portion of Canaan). Others explain *eishel* as an orchard of fruit-trees which Abraham planted to provide refreshment for passing wayfarers.

Another opinion maintains that *eishel* denotes an inn and that Abraham provided his guests not merely with fruit, but with food and drink and even lodging. Furthermore, Abraham went so far as to provide a court to settle the various disputes and questions of law that sometimes arose amongst the wayfarers.

Considering that Abraham's guests were complete strangers to him, we can appreciate the greatness of Abraham's *chesed* (kindness). Abraham was not content with giving his guests "bread and water," the bare essentials of sustenance. He deemed it necessary to pro-

vide them even with luxuries and extras—fruit, wine, all kinds of delicacies, and even a bed. As if all this were not sufficient, he felt that it was his duty to satisfy their *spiritual* needs too, and he provided a "Sanhedrin" (the aforementioned court of law) for them.

This same extravagant kindness that Abraham displayed, is latent within every one of us. There are certain noble traits of character which we Jews have inherited from our forefathers; they have become an intrinsic part of our personality. To lend a helping hand to the needy, whether in the form of monetary charity, hospitality, or any other form of kindness, is a characteristic possessed by every Jew as a legacy from Abraham and, like Abraham's trait, it is a kindness that knows no bounds. In the heart of every Jew is rooted the instinctive impulse to extend charity even to a complete stranger, to give him not merely the bare minimum, but extras too, and to endeavor to satisfy not only his physical wants, but also his spiritual needs.

Giving is not limited to the material. When we help and guide somebody to lead a purposeful and righteous lifestyle, that is *true* giving; and when that opportunity arises, it then not only becomes a good deed but a solemn obligation. Just as teaching the ABC's to an illiterate is a noble and moral duty, so too teaching the Aleph Bet of Jewish life to those who (by no fault of their own) haven't had the opportunity, is a duty for every one of us. Kindness and caring on all levels, material and spiritual, is the hallmark of the descendants of Abraham Avinu.

SUPPORT OUR ADVERTISERS

RE-ELECT

# CHUCK HEBNER

9th Representative District



- ✓ 14 years legislative experience
- ✓ Two-term Speaker of the House
- ✓ Proven Leadership

THE B'NAI B'RITH HOUSE reflects the long-standing Jewish tradition of sensitivity to the needs of others.

I attended the dedication ceremony nearly 10 years ago and have followed its progress ever since.

I'm proud it's in my district!

Paid for by the Chuck Hebner for Citizen's Committee

# Orthodox Canadian Jew Buys Bakkers' PTL Empire

By BEN KAYFETZ

TORONTO (JTA)—An Orthodox Jew from Toronto is buying the bankrupt PTL empire of Christian television evangelists Jim and Tammy Bakker. News that Stephen Mernick, 34, put in the winning bid of \$115 million for the PTL assets, mostly in Fort Mill, S.C., surprised the Jewish community here, where Mernick, a third-generation Torontonian, has been something of a mystery man.



Stephen Mernick

The bid was disclosed by the PTL ministry at a news conference October 4 in Charlotte, N.C., attended by Mernick's lawyers. Mernick himself remained at home because he would not travel on *Simchat Torah*. He was quoted by his lawyers as saying PTL property should continue to be used for Christian purposes. It includes a television studio, the Heritage USA theme park, a campground, a church and private housing. PTL's debts exceed \$130 million.

If the creditors and U.S. bankruptcy court support the recommendations of trustee M.L. Benton, Mernick must come up with \$50 million by Dec. 1, when the deal is closed. The balance is payable in annual installments until 1993. Mernick's businesses in Canada are real estate, a travel agency, garbage collection, clothing and waste recycling. They are said to have annual sales of \$5 million.

Six months ago, Mernick successfully bid \$100 million for the Forestone tire plant in Hamilton, Ont. It has ceased

producing tires and Mernick apparently intends to sell off its assets.

Mernick is a member of the Clanton Park Synagogue, an Orthodox congregation in the Toronto suburb of Downsview. He wears a beard and has appeared on television in the black cloak and black felt hat of an ultra-Orthodox Jew. At the news conference in Charlotte,

his lawyers read a statement in which Mernick said: "While I am not a Christian, I have a great deal of respect for the depth of the religious feeling of the many thousands of Christians who have supported the Heritage ministries over the years."

According to some observers, that statement might indicate that Mernick is

inviting bidders to lease or purchase the property for Christian purposes. But his lawyers told the Toronto Globe & Mail that Mernick has not decided what to do with the property. The PTL filed for protection against creditors in June 1987, three months after Bakker resigned the ministry after admitting to a sexual encounter with a young church secretary.

## Challah Bomb Injures Children In Jerusalem

By GIL SEDAN

JERUSALEM (JTA)—Three Jewish children in Jerusalem were injured in a bomb explosion on the eve of *Simchat Torah* during a bloody weekend of violence in which at least two Arabs were killed and dozens wounded in the administered territories. The weekend also was marked by a violent confrontation between the Israel Defense Force and members of Rabbi Meir Kahane's extremist Kach movement.

About a half million Palestinians were placed under curfew in the Gaza Strip, where some of the worst rioting occurred. But Israelis were shocked most by the wounding of three young sisters when a booby-trapped loaf of Sabbath challah exploded in a grocery store.

The victims, Semadar Hadad, 12, and her sisters, Inbal, 7, and Hadas, 5, were hospitalized to remove shrapnel from their legs. Their wounds were reported to be light. The youngsters are residents of the Musara neighborhood. The incident occurred at a shop in the adjacent ultra-Orthodox neighborhood of Mea Shearim, near the border between East and West Jerusalem.

Another challah bomb exploded the day before in the Jewish Quarter of the Old City, without causing casualties or damage. It was tossed into the street after the shopkeeper and a customer became suspicious of evidence of tampering.

The Arab fatalities occurred September 30 in Hebron: one in a clash with security forces and the other under unclear circumstances involving an armed Jewish settler. The incidents began when a car driven by Rabbi Moshe Levinger, a leader of the militant settlers movement Gush Emunim, came under a barrage of rocks in Hebron. Levinger's four children were in the car. Levinger fired into the air. IDF soldiers pursued the rock-

throwers, firing tear gas and live bullets. A local Arab merchant, Kaed Hassan Sallah, was fatally wounded.

Arabs in Hebron blamed Levinger for Sallah's death. The IDF is investigating the incident.

Shortly afterward, an Arab youth was shot to death by soldiers during a rock throwing incident on the edge of town. Arabs in Hebron promptly called a general strike. As the news spread, clashes developed throughout the territories between security forces and Palestinians. About 18 Arabs were wounded.

The strike continued to protest a decision by the Israeli authorities not to reopen schools.

The IDF also had to contend with a sit-down strike by angry Jewish settlers at the spot in Hebron where Levinger's car was stoned. The army declared the area a closed military zone and cordoned it off. The settlers threatened to resume their demonstration as soon as it was reopened.

A group of 20 Kach activists were arrested over the weekend, after violently resisting soldiers who attempted to remove them from an old synagogue in the West Bank town of Jericho, near the Dead Sea. The Kach group was trying to establish a settlement illegally at the synagogue site.

It was learned, meanwhile, that the army intends to bring criminal charges against another three soldiers suspected of killing Arab residents of the Gaza Strip in disregard of regulations. Four IDF soldiers were charged with manslaughter last week in the death of a resident of the Jabalya refugee camp in Gaza.



**CHABAD  
COMMUNITY MELAVE  
MALKA**

(Post Shabbat Celebration)  
with  
**PROFESSOR VELVL W. GREENE**  
(Former NASA Scientist,  
presently at Ben-Gurion Univ., Israel)

who will speak on  
**"JUDAISM IN THE SPACE AGE"**  
Saturday Night, November 12, 8:00 P.M.  
couvert \$9.-person  
**J.C.C.**

The Program will also include:  
Havdallah Service  
Buffet Meal  
Musical Entertainment  
Award Winning Kosher Wines

Reservations **MUST** be made by  
Nov. 3.  
Call Chabad office -  
**478-4400**

A project of Chabad-Lubavitch of Delaware

# SEE AND SKI

The great sport of skiing comes indoors with plenty of fun, exciting, entertaining, informative features for skiers and non skiers alike.

- The Ray Ban fashion show spectacle
- The Malson Golden Skiers Saloon
- The Jeep Ski Club Center, co-sponsor Skiing Magazine
- Free beginner lessons on our Rossignol/Killington Ski Slope
- Show feature: Schoenberger Skis The Stage
- New family Ski Center with Vicki Fleckenstein and Vail's Sport Goofy
- Plus Ski Films, Fitness and Health Clinics, Super Prizes, Great bargains and the Vermont Country Store

**AT THE PHILADELPHIA SKI AND TRAVEL SHOW**  
VALLEY FORGE CONVENTION & EXHIBIT CENTER Exit 24 Penn Tpke, King of Prussia

**OCTOBER 28-30**

HOURS: FRI 6-11 PM, SAT 11AM-11PM, SUN 11AM-7PM. ADMISSION \$5.00.  
BRING THE WHOLE FAMILY. CHILDREN UNDER 12 FREE.

FEATURING

Wick's

\$2,000,000<sup>00</sup> SALE!

## Campaign's Jewish Candidates

### Dennis Greenhouse Running For New Castle County Exec.

Dennis E. Greenhouse, Democratic candidate for New Castle County Executive, was born and raised in Wilmington, Delaware. A graduate of Pierre S. duPont High School in Wilmington and Fairleigh Dickinson University in Teaneck, New Jersey (1972), he has made a distinguished career in business as well as in government.

As a banking executive, Greenhouse served as a mortgage lender and industry government specialist. He worked with the Banking Committee of the House of Representatives in Washington, D.C., on legislation, and served on the Mayor of the City of Wilmington's Subcommittee on Urban Lending. Greenhouse developed the first flexible-payment mortgage plan in the East and helped develop the first revenue-bond mortgage financing. In the Finance Department of International Playtex in Dover, Greenhouse was responsible for more than \$800 million.

Greenhouse was elected Delaware State Auditor in 1982. Notable among his accomplishments as State Auditor is the Auditor's Office Hotline, an innovation which has helped Greenhouse uncover nearly \$2 million in mis-spent State money and which has been copied by 13 other states. Greenhouse's office also does peer reviews to advise other states on improving their operations. Greenhouse has served on the Executive



Dennis Greenhouse

Committee of the National State Auditor's Association and was instrumental with Congressman Tom Carper in the passage of the federal Single Audit Act, signed into law by President Reagan in 1984.

A member of many professional and community service groups and the recipient of numerous awards and honors, Greenhouse has been an Outstanding Young Man of America and has been listed in *Who's Who* since 1980.

A lifelong member of Congregation Beth Shalom, Greenhouse served as its USY Advisor from 1976 to 1978. He is an Associate Member of Hadassah and participates annually in the Jewish Federation of Delaware/UJA Campaign.

Greenhouse and his wife, Liz, and family live in Middletown.

### David Levinson Candidate For Insurance Commissioner



David Levinson

David Levinson, who was born in Wilmington, has served as Delaware's Insurance Commissioner for the past four years. He graduated first in his class from St. Andrews School in Middletown and Magna Cum Laude from Harvard College in 1957. He graduated from Harvard Law School in 1960. In 1973, Levinson received the Headmaster's Alumni Award from St. Andrews School.

Prior to assuming the position of Insurance Commissioner, Levinson was a real estate developer. When Levinson became Commissioner, he felt he was inheriting an agency that was not effectively regulating the fiscal solvency of insurance companies domesticated in Delaware. Levinson saw company solvency as his most urgent challenge. He created the Bureau of Examination, Rehabilitation and Guaranty (BERG) as a means of "restoring Delaware as a regulatory state capable of addressing and controlling the solvency problem. Delaware's financial regulation of insurance companies has been recognized across the country as a model for small states with large numbers of domestic insurers.

Levinson has been appointed by the National Association of

Insurance Commissioners to key positions on several national committees. He currently serves as Chairman of the NAIC Rehabilitators and Liquidators Task force and as Vice Chairman of the Financial Condition Subcommittee.

Other committees being served by Levinson include chairing the Health Promotion and Chemical Abuse Task Force, and membership on the State and Federal Health Insurance Task Force and the Accident and Health Insurance Committee.

Levinson gained national attention through his wellness-preventive lifestyles behaviors concept, and a regulation on wellness encouraging insurance companies to provide certified health plans created by him became a national model this year at the NAIC.

He has appeared on CBS Morning News and he and his wellness proposals have been written up in several national publications including *Business Week Magazine*, the *Washington Post* and the *New York Times*.

Levinson's activities within the local Jewish community include serving on the Board of Directors of the Jewish Federation of Delaware and as a member of the President's Circle of Congregation Beth Shalom. Levinson has been a lifelong member of Congregation Beth Shalom.

Locally, he serves on the Board of Directors of the Blood Bank of Delaware and as that organization's Building Chairman for its new building. Levinson also serves on the board of the Delaware Safety Council.

In the national Jewish community, Levinson has served as Associate Director of the Anti-Defamation League of B'nai B'rith and as a member of B'nai B'rith. He has also served as President of the Harvard Hillel Foundation and as Chairman of the Board of the Washington University Hillel.

## Manhattan Synagogue Torched

By ANDREW SILOW CARROLL

NEW YORK (JTA) — Vandals set fire to the entrance of the Central Synagogue in midtown Manhattan on the morning of October 3, charring a pair of newly refurbished doors which had been unveiled only the day before in honor of the synagogue's 150th anniversary.

Flammable liquid was poured on the doors before they were set on fire shortly before 5 a.m., police said. No messages or slogans were found at the scene. Police have deemed the fire "suspicious" but are not yet investigating it as a bias crime.

The fire struck as the historic Reform temple prepares to celebrate its founding 150 years ago this month, according to Rabbi Stanley David. "One wonders whether this person noted this development and waited for (the doors) to be completed," said David. He said that in August, swastikas were scratched on the side of the building.

The attack follows by a month the burning and desecration of a Brooklyn synagogue.

## Rabbis Asked To Speak On AIDS

WASHINGTON (JTA) — October is National AIDS Awareness and Prevention Month, and the U.S. Department of Health and Human Services has been asking clergy to include in their religious services this month a message about the deadly condition and how to control its spread.

In a letter being sent to rabbinical organizations and other clerical groups, department officials and Surgeon groups, department officials and Surgeon General Dr. C. Everett Koop include some suggestions for the messages.

They range from detailed discussion of the myths surrounding AIDS and the estimated million and half Americans who have already been infected by its virus, to a simple recommendation that congregants call the Public Health Service's National AIDS Hotline (1-800-342-AIDS) for further information.

The officials urged clergy to include their AIDS awareness messages during the weekend of Oct. 14-16.

## Israeli AIDS On Decline

The incidence of AIDS in Israel is decreasing from year to year, a reversal of the worldwide trend, a specialist in the disease reported here. AIDS peaked in Israel in 1986, when 15 active cases were diagnosed. The number of new active cases declined to 13 in 1987, and nine have been reported so far this year.

## Beth Emeth Students Aid Vandalized Synagogue

Each week the students in Beth Emeth's Sunday School contribute money to the Keren Ami Fund. During the course of the year, Grade 7 researches various organizations in our community and in the world community that are in need of funding. They read about the organizations such as Jewish Federation of Delaware, The Kutz Home of Delaware, The Jewish Braille Institute, and other organizations. Speakers come to the School, films are shown, and the students look at what the various places do with their money. At the end of the school year, they appropriate all the funds collected that year and give a report to the students in the other classes.

Often during the course of the year, situations come up that require immediate funding. When the students learned that a synagogue in Brooklyn had been vandalized and the Torahs destroyed just prior to the High Holy Days, they felt that they needed to act immediately. They decided to give \$36—twiceChai—to the Orthodox Congregation. This money was sent along with a student letter expressing con-

cern at the tragedy.

The students in Mrs. Myrna Pollack's Second Grade Class do various Tzedakah projects during the school year. They are currently collecting money to purchase a Challah Cover from "Lifeline for the Elderly" in Jerusalem. Their purchase will help the Lifeline Organization and will be sent home with a different child each week for use at his/her Shabbat celebration. After completing this project, they will also send some money to Shaarei Tefillah Congregation; and, since learning about the Torah and the task of writing the Torah are part of their curriculum, they will send a letter explaining their feelings on learning that the Torahs were destroyed.

"We attempt to teach the Jewish values of Tzedakah and Mitzvot to our students on a meaningful level. These values mean more than just dropping a spare quarter into the Keren Ami envelope each week—they mean caring and concern. We hope that our help to the Congregation in need illustrated this," said Suzanne Paul, Director of Beth Emeth's religion school.

## Top Court Rulings May Affect Jews

NEW YORK (JTA) — The new Supreme Court term, which began October 3, will include a number of cases of importance to Jews. The court agreed to hear arguments in two key church-state cases and review a landmark civil rights decision.

In the church-state realm, the high court will hear an appeal of County of Allegheny and Chabad vs. American Civil Liberties Union. The U.S. Court of Appeals for the 3rd Circuit earlier this year declared the erection of a menorah and a nativity scene on public property in Pittsburgh as unconstitutional.

It will mark the first time that the court will decide on the constitutionality of a menorah display in addition to creche or cross displays.

The case pits Chabad, the Lubavitch Chasidic movement that donated the menorah,

against the Anti-Defamation League of B'nai B'rith, which is representing a plaintiff opposed to the display. American Jewish Congress has filed a friend-of-the-court brief supporting the plaintiffs.

The court will also hear *Frazer vs. Department of Employment Security*, in which an Illinois man says he was denied state unemployment benefits because he refused to work on Sunday, his Sabbath, despite the fact that he belonged to no organized church or denomination.

Jewish groups will be also be watching with interest a review of *Patterson vs. McLean Credit Union*, which could overturn a 1976 ruling, *Runyon vs. McCrary*, that upheld a broad interpretation of the Civil Rights Act of 1966. That act barred race discrimination in both the public and private sectors.

(Editor's Note): In its October 7 issue, *The Jewish Voice* highlighted the career of Jake Kreshtool, the Democratic candidate for the office of governor of the state and the first member of the Jewish community to seek that office. This is not an endorsement of these candidates.

# Pacem In Terris Speaker: 'Violence Is Lopsided'

By PRISCILLA SIEGEL and PAULA BERENGUT

"The repression by the Israeli military is apparent everywhere in the occupied territories. In the hospitals, bed after bed is filled with patients suffering from bullet wounds. These are Palestinian victims who could pose no threat to the Israeli military," according to Sheila Ryan, director of the Middle East Peace Network in New York City, at a press conference sponsored by the Delaware chapter of Pacem In Terris on October 5. The news conference was attended only by representatives of WILM radio and The Jewish Voice.

The current violence in the Occupied Territories, says Ryan, is "lopsided" with the Palestinians bearing the brunt of "Israeli brutality." Ryan said that "violence in the uprisings is at a comparatively low level," with the result being that the number of "Palestinian deaths in the uprisings is approaching 300, compared to the Israelis, who have suffered only one fatality." The Israeli

Embassy in Washington reports that the number of Israeli fatalities at 5, with several dozen victims of serious burns and injuries.

David Margules, chairman of the Jewish Federation's Israel Relations Task Force, commented that "everybody agrees that the injuries and deaths that have occurred are sad and unfortunate. But Ryan misses a couple of important points." The Israelis, Margules notes, "are not dealing with civil disobedience as the U.S. experienced in the 1960's. They are dealing with rocks, lead pipes, molotov cocktails and violent protesters." As a result, he adds, "in order to protest lives and to keep order it is necessary for the Israelis to confront the violence with force."

Margules also makes the point that Israeli's continuing to govern the territories is a "product of the refusal of the Arab governments to negotiate a peaceful settlement." He adds that the U.S. policy to attempt to bring all parties to a negotiating table under cir-

cumstances where peaceful and reasonable solutions can be worked on, but that Egypt is the only government that has cooperated so far.

"There have certainly been isolated incidents where unnecessary force has been used," according to Margules, adding that other governments do not hesitate to put down violence in a day, "but Israel will not deal with the Palestinians this way." As examples, Margules uses the Algerian government's opening fire on a group of protesters last week and the Saudi government's massacre of 200 Iranian pilgrims to Mecca two years ago.

Ryan places much of the responsibility for the Palestinians' plight on the United States. The U.S., she says, has played an "unfortunate role in its continued support of Israeli occupation in the territories and its continued military support of Israel. The U.S.' pivotal position," Ryan says, "should be used in support of negotiations, rather than in support of an Israeli arms build-up."

Throughout the conference, Ryan repeatedly criticized what she considers the U.S.' "misguided policy of military support for Israel." When asked which country in the Middle East was the most democratic, Ryan replied that none of the Middle Eastern countries represented a "paradigm of democracy." She added that the U.S. does not have a history of supporting beacons of democracy around the world, citing U.S. support of dictatorial governments such as South Korea and El Salvador.

Following her press conference in Wilmington, Ryan was interviewed by WXDI-Radio, the radio station of the University of Delaware and spoke to a group at Salisbury (Md.) State University. Pacem In Terris is a national organization dedicated to promoting peace around the world. Rabbis Drooz and Grumbacher have served on the board of the local chapter; currently Stanley W. Balick serves on that board.

# Kahane: 'I Am Not A Nazi'

By GIL SEDAN

JERUSALEM (JTA) — "I am neither a Nazi nor a racist," Knesset member Meir Kahane told the High Court of Justice on October 13.

Kahane was appealing an almost unanimous decision by the Central Election Committee last week, which barred Kach from running in the Nov. 1 Knesset elections on grounds that it is racist and opposed to the country's democratic institutions.

The decision was grounded in an 1984 amendment to the Basic Law, which bans parties that engage in racial incitement.

The controversial New York-born rabbi insisted that the ideas his Kach party espouses are rooted in the Torah.

Kahane appeared before the court with his attorney, Aharon Pappo. Deputy Attorney General Dorit Beinisch, arguing for the state, submitted as evidence bills Kahane introduced in the Knesset and quota-

tions from Kach literature. She said they proved the party is "racist, contrary to the democratic character of the state."

These included proposed legislation that would make intermarriage or cohabitation between Jews and non-Jews a criminal offense; would separate Jews from gentiles at beaches; and would deny non-Jews the right of appeal to Israel's supreme court.

"Everything (I say) is based on halacha and the Bible," said Kahane. "This is not an attempt to ban Kahane, but rather a Judaism which is thousands of years old."

His lawyer was more circumspect, claiming that the media was biased against Kahane and therefore took his remarks out of context. He insisted that Kach is not undemocratic "because it does not question the structure of elected agencies and the elections to the Knesset." The movement "is not racist because racism can only be in-

terpreted on a biological and hereditary background," Pappo contended.

Meanwhile, the Likud and Tehiya parties were expected to submit Friday an appeal to

the High Court of Justice against the decision of the Central Elections Committee to allow the predominantly Arab Progressive List for Peace to take part in the elections.

## JCRC

Jewish Community Relations Committee

# Soviet Jewry

The JCRC National Conference on Soviet Jewry has reported that slightly over 2,000 Jews left the Soviet Union in September, bringing the yearly total to date to 11,238. An average of 2,000 departures monthly is anticipated for the rest of the year, bringing the annual total to approximately 18,000 or twice the number of 1987.

The numbers are not expected to fall during 1989. This appears so even though the Soviets have made no substantive progress regarding meeting the standards for free emigration concerning such issues as the continued denial of visas on grounds of state secrets, questions regarding first-degree relatives, etc.

Though the two-track emigration process is not yet in place, 70-80 Jews departed through Romania in September. Nevertheless, only 10.7% of the new

emigrants that month continued on to Israel.

The Washington Action Office of the Council of Jewish Federations noted that the Congress has appropriated \$15.8 million for Soviet Jewish resettlement in the United States during fiscal year 1989. This figure more than doubles the funds that were available in fiscal year 1988. Nevertheless, \$5,000,000 of the '89 allocation has been earmarked as reimbursement for funds expended in 1988. Thus, only \$10,800,000 will be available for resettlement and, at current rates, is likely to run out by the middle of the fiscal year. David Harris of the American Jewish Committee observed that this potential shortfall constitutes a major issue facing the Jewish community. Additional federal and private funds will in all likelihood be needed for resettlement, he said.

# Suit Claims JNF Misleads Donors On Green Line Issue

By YITZHAK RABI

NEW YORK (JTA) — A New York Supreme Court judge has adjourned hearings on a class-action suit against the Jewish National Fund of America until Oct. 26, lawyers for the JNF and the plaintiffs told the Jewish Telegraphic Agency.

Four plaintiffs in the lawsuit are accusing the JNF of misleading American Jews into believing JNF allocates funds to Jews in all parts of Israel, including the territories gained during the 1967 Six-Day War. The plaintiffs are supporters of the right-wing Tehiya party in Israel, which considers the territories part of the biblical Land of Israel. They are Jay Marcus, William Goldman, Morris Stillman and Martin Gallin.

State Supreme Court Judge

Shirley Fingerhood decided Oct. 12 to adjourn hearings on a motion for a restraining order the plaintiffs are seeking against the JNF by two weeks, in order to give the four enough time to answer papers introduced Oct. 12 by JNF attorney Andy Brosnan.

The plaintiffs are requesting that the court restrain JNF from expending the thousands of dollars they claim to have contributed to the agency. But Brosnan argued that JNF records show that the plaintiffs only contributed \$400.

JNF has said the plaintiffs' claim to have been misled is "totally without basis or merit." Stuart Paskow, director of communications for the agency, said that he is "very, very satisfied" to let the case be decided in court.



AN ALL-BEETHOVEN RECITAL WITH PETER SERKIN AND YOUNG UCK KIM



Tuesday, October 25  
8:00 PM  
\$20.00, \$17.00, \$14.00  
(302) 652-5577

AN EVENING WITH CHUCK MANGIONE



Thursday, October 27  
8:00 P.M.  
\$20.00, \$17.00, \$14.00  
(302) 652-5577

COMEDIANS EMO PHILIPS & JUDY TENUTA



Saturday, October 29  
8:00 PM  
All Seats \$15.00  
(302) 652-5577

CHICAGO SYMPHONY WINDS



Music by Mozart, Beethoven and Grieg  
Sunday, November 6  
7:00 PM  
\$20.00, \$17.00, \$14.00  
(302) 652-5577

# Your Ticket For Profit & Success!

RUD Distributors Ltd., Inc.

Wholesale Distributors of Cigars, Tobaccos, Candy, Maps & Books

WILMINGTON, DELAWARE 19806

302-428-1-RUD

(302) 428-1783 & (215) 358-1324



Box Office hours are Monday through Friday 11:00 a.m. to 4:00 p.m. Tickets may also be purchased through all Ticketron locations or by calling Teletron at (800) 233-4050 or through Tickettown 656-9797. These programs are made possible through a grant from the Delaware State Arts Council, an agency of the State of Delaware, and the National Endowment for the Arts, a federal agency.

652-5577

# Countdown To Election '88:



## Where Do The Candidates Stand On Human Rights?

A debate between the presidential campaigns of Vice President George Bush and Governor Michael Dukakis. Gordon Zacks will speak for the Republicans; Hyman Bookbinder for the Democrats.

### THE REPUBLICAN:

By GORDON B. ZACKS

Twenty years ago, George Bush served in Congress, representing a mostly white congressional district in Texas. That year, the landmark Civil Rights Act of 1968 came before the House of Representatives.

Despite heavy pressure and even hostile threats from his constituents, George Bush voted for passage of that legislation, which guaranteed open housing requirements across the nation.

Explaining his vote, George Bush emphasized how tragic it would be for a black serviceman returning from Vietnam, where he had been fighting for the ideals of this country, to be denied the right to buy or rent the home of his choice.

A colleague of Bush's described this as "typical George Bush." He showed the true mark of a leader — he made the right decision even though it was unpopular at the time.

George Bush's commitment to human rights and equality of opportunity didn't begin with his race for the presidency. It is fundamental to his values, dating back to his early days when he chaired the United Negro College Fund drive at Yale University.

George Bush has stood for human decency and freedom all his life. Many of you noticed that Coretta Scott King, the widow of Dr. Martin Luther King Jr., was a guest of the Bush family at the Republican National Convention in New Orleans.

Though Mrs. King will not be campaigning for either candidate this year, she has a longstanding and close relationship with George and Barbara Bush.

But the right to live where we want in this country doesn't have any meaning for Jews who want to leave the Soviet Union.

George Bush was an integral part of the administration that made a discussion of human rights the number one item on the agenda of every U.S.—Soviet summit.

Bush, who has met personally with each of the last three Soviet leaders, raised the issue of Soviet Jews directly with Soviet leader Mikhail Gorbachev during the Washington summit.

On Dec. 6, 1987, the eve of that meeting, 250,000 Jews marched in Washington demanding freedom for our Jewish brethren.

George Bush found the time to participate in this most historic of occasions. Michael Dukakis felt his time was better spent on the campaign trail.

Bush delivered a forceful message to the Soviets and to Gorbachev, who was already in Washington at the time:

"Now Mr. Gorbachev has embarked on a policy of glasnost, or openness. But openness begins at the borders. Let's see not five or six or 10 or 20 refuseniks released at a time, but thousands, tens of thousands — all those who want to go."

This year, former refusenik Natan Sharansky paid tribute to George Bush's efforts to win freedom for Soviet

Jews: "You met Avital in 1979 in Jerusalem, and since then you never forgot my case.

"Having become vice president, you invited Avital to the White House and never stopped your attempts to secure my release. We are grateful for all you did for us, and your contribution to freedom of Soviet and Ethiopian Jews."

George Bush understands that freedom and human rights go hand-in-hand.

He understands that America cannot be serious about its commitment to human rights if America is weak or unwilling to stand up against totalitarian tyranny.

Today, 2,000 Soviet Jews are leaving the USSR each month. How will Mike Dukakis, a novice with no foreign policy or defense experience, stand up to the Soviets?

And if he attempts to do so, will the Soviets take his pronouncements seriously if his administration proceeds to weaken our nation's defenses?

America cannot afford several years of on-the-job training for a Dukakis administration. The Soviet leadership understands that George Bush will demand that the Soviets live up to the promises of Helsinki.

A Bush administration will support the Jackson-Vanik amendment, which ties U.S.—Soviet trade to free emigration, as a means of assuring that the Soviets comply with previous agreements.

George Bush will not fall into the trap of letting human rights rhetoric be employed as an excuse for Israel-bashing.

When Vice President Bush was asked in a questionnaire in the Des Moines Register about so-called Israeli human rights abuses, he responded:

"I recognize Israel's responsibility to restore law and order. I am saddened by the violence of these demonstrations and the loss of life.

"We have urged Israel to use non-lethal methods to deal with the demonstrations, and I am pleased Israel has decided to use non-lethal methods of riot control whenever possible.

"The Palestinians, on the other hand, have the responsibility not to engage in violence and disorderly conduct."

It is easy to walk away from your friends when they are in danger or need your support.

It is most difficult, as George Bush has shown, to stand fast for principles — whether it be civil rights for blacks in this country, or human rights for Jews in the Soviet Union — when to say nothing would be the politically-expedient course.

Gordon Zacks is chairman of the Jewish Campaign Committee for Bush and a co-chairman of the National Jewish Coalition.

\*\*\*\*\*

This feature was prepared by the Washington Jewish Week and is reprinted with permission.

\*\*\*\*\*

### THE DEMOCRAT:

By HYMAN BOOKBINDER

One year ago, speaking to the City Club of Chicago, Michael Dukakis summed up his deep convictions on human rights in a few simple words:

"Understand that nothing justifies the theft of human dignity. Nothing. Not left-wing or right-wing politics. Not personal or economic or religious differences."

One month ago, speaking to B'nai B'rith, he translated those convictions into a definition of our nation's responsibility:

"America's place is not with the dictators. It is with governments that trust and respect their own people. It is with democratic nations that are proud and strong and free. It is with nations like Israel."

And only two weeks ago, he let the Soviet Union know exactly what they could expect from a President Dukakis:

"I will challenge the Soviet Union to live up to its obligations under the Helsinki Accords — to let Jews and other minorities emigrate if they wish, and let them worship freely and pass on their heritage to their children if they stay.

"It is not enough to dole out a few visas, for human rights are not bargaining chips; they are the very foundation of peace itself."

To be absolutely sure the Soviets understood what these words meant in practice, Gov. Dukakis has declared that "a Dukakis administration will stand by Jackson-Vanik to make sure those doors open wide — once and for all."

The Dukakis human rights policy represents a continuation of decades of Democratic commitment. It was Eleanor Roosevelt, in the Truman administration, who gave inspired leadership to the adoption of the Universal Declaration of Human Rights.

The historic Jackson-Vanik legislation was a Democratic achievement, and over the objections of the Nixon administration. The 1988 Democratic platform calls upon America to "mandate human rights, human dignity, and human opportunity in every country on earth."

Michael Dukakis's commitment to international human rights everywhere — in South Africa, in Eastern Europe, in Central America — goes beyond party platforms or campaign speeches.

Space permits only a few illustrations of how his strong personal involvement has manifested itself especially in areas of Jewish interest:

• Recognizing that the Holocaust was the most heinous crime against humanity in history, Dukakis, along with his wife, Kitty, has identified with Holocaust education, remembrance activities, and the building of a national museum.

He was particularly outraged over the presence in the Bush campaign of individuals who even today deny the Holocaust took place, or who had been involved in anti-Semitic activities.

• He has urged the Congress to delay no longer in passing implementing legislation to complete action on Senate ratification of the Genocide treaty.

The 37-year delay in ratification has been due to resistance primarily by Republican senators, some of whom even to this day are blocking the implementing legislation.

• He has pledged full support to the Office of Special Investigations in its efforts to apprehend Nazi war criminals, and to keep Kurt Waldheim on the watch list.

• Believing that the struggle for human rights and against anti-Semitism must start at home, Dukakis urged and signed into Massachusetts law a religious vandalism statute aimed at harassment and vandalism motivated by religious, ethnic or racial intolerance.

Michael Dukakis knows too that the words "human rights" can be perverted and abused.

The outstanding example is the vicious U.N. Zionism-equals-racism resolution, and he has never stopped demanding its repeal, as have 48 other governors. (Only Gov. John Sununu — Bush's campaign co-chairman — has refused to do so.)

And Dukakis has protested last month's inexcusable action by the Reagan-Bush administration in putting Israel on trial for alleged violation of workers' rights!

The depth of the Dukakis commitment to human rights is best exemplified in his frequent personal actions in seeking and obtaining freedom for Soviet Jewish refuseniks.

That personal, emotional involvement, for example, was impressively demonstrated at the recent B'nai B'rith convention, when Dukakis introduced the Fuchs-Rabinovich family.

"We will never forget the long struggle of Michael, Marina and Mishka," Dukakis told the hushed audience.

"We will never forget the joy in our hearts at Mishka's long-overdue Bar Mitzvah, where Kitty was called to the bimah for an aliyah."

Michael Dukakis knows in his heart what human rights is all about.

Hyman Bookbinder, former Washington representative of the American Jewish Committee, is presently serving as a special adviser to the Dukakis campaign on the Middle East, human rights and the underprivileged.





The **JEWISH VOICE**

"You heard it in  
The Jewish Voice"

PUBLISHED BY THE JEWISH FEDERATION OF DELAWARE 101 Garden of Eden Rd. Wilmington, Delaware 19803

NEW HIGH  
PI FRATERNITY HO  
ER • JCC PRESCHOOL • CA  
SERVICE • JEWISH FEDERATION C  
HISTORICAL SOCIETY • JEWISH WA  
VOICE • JEWISH COMMUNITY RE  
MILTON & HATTIE KUTZ HOME  
LABOR ZIONIST ALLIANCE  
BENEVOLENT SOCIETY • N/  
WOMEN • ORT • TEMPLE P  
DELAWARE ENDOWME  
KODESCH SHEL EMF  
WORKSHOP • KI TO  
ACADEMY • CHABAD-L  
GREGATION BETH EM  
SHALOM • CONGREGAT  
HOUSE • B'NAI B'RITH  
B'BRITH LODGE #470 • B  
GRATZ HEBREW HIGH • H  
SILON PI FRATERNITY HO  
CENTER • JCC PRESCHOOL • C  
SERVICE • JEWISH FEDERATION  
HISTORICAL SOCIETY • JEWISH WA  
VOICE • JEWISH COMMUNITY RELAT  
MILTON & HATTIE KUTZ HOME • KUTZ  
LABOR ZIONIST ALLIANCE • MON  
BENEVOLENT SOCIETY • NATIONAL CO  
WOMEN • ORT • TEMPLE BETH EL • JEWIS  
DELAWARE ENDOWMENT FUND • JEWIS  
KODESCH SHEL EMETH CONGREGATIC  
WORKSHOP • KI TOV CLASSES • A  
ACADEMY • CHABAD-LUBAVITCH OF DE  
GREGATION BETH EMETH • CONGR  
SHALOM • CONGREGATION BETH SHOLO  
HOUSE • B'NAI B'RITH WOMEN OF D  
B'BRITH LODGE #470 • BRANDYWINE  
GRATZ HEBREW HIGH • HADASSAH • HI  
SILON PI FRATERNITY HOUSE • JEWI  
CENTER • JCC PRESCHOOL • CAMP JCC •  
SERVICE • JEWISH FEDERATION OF DELAW  
HISTORICAL SOCIETY • JEWISH WAR VETERANS  
VOICE • JEWISH COMMUNITY RELATIONS COMM  
MILTON & HATTIE KUTZ HOME • KUTZ HOME AUXILIARY  
LABOR ZIONIST ALLIANCE • MONTEFIORE MUTUA  
BENEVOLENT SOCIETY • NATIONAL COUNCIL OF JEWISI  
WOMEN • ORT • TEMPLE BETH EL • JEWISH COMMUNITY O  
DELAWARE ENDOWMENT FUND • JEWISH SINGLE • ADA  
KODESCH SHEL EMETH CONGREGATION • THE  
WORKSHOP • KI TOV CLASSES • ALBERT EINSTF  
ACADEMY • CHABAD-LUBAVITCH OF DELAW  
GREGATION BETH EMETH • CONGREGATION BET  
SHALOM • CONGREGATION BETH SHOLOM • B'NAI B'RIT  
HOUSE • B'NAI B'RITH WOMEN OF DELAWARE • B'NA  
B'BRITH LODGE #470 • BRANDYWINE COUNTRY C  
GRATZ HEBREW HIGH • HADASSAH • HILLEL • ALPHA E  
SILON PI FRATERNITY HOUSE • JEWISH COMMUNIT

# Guide To The Jewish Community of Delaware

# HISTORICALLY SPEAKING

Delaware was the second of the 13 original American colonies to which Jews were legally admitted. (New York was the first.) The first known Jews in Delaware arrived in 1655, but a community with its own house of worship, cemetery and other communal services did not begin to develop until 1873.

Two factors probably accounted for the presence of not more than a handful of Jews in Delaware until a generation after the Civil War. One was the remoteness of the greater part of the state from the main North and South travel routes. The other

was the proximity of Wilmington, the only large city, to Philadelphia. Because Delaware and Pennsylvania were reckoned as virtually a single state until after the revolution, there were undoubtedly Pennsylvania Jews who had commercial interests in Delaware, but few of them lived here.

At the turn of the century, Delaware's Jewish Committee, the forerunner of the Jewish Federation of Delaware, was established.

The year 1935 marked the establishment of the Jewish Federation of Delaware as we know it today.

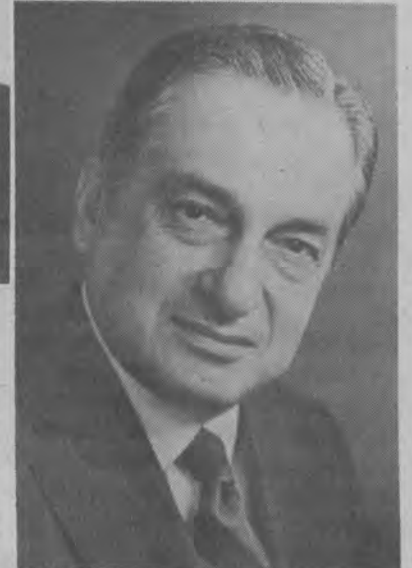
While approximately 94% of Delaware Jews are located in and around Wilmington, Dover Jewry has a history going back more than 115 years, and Newark has been the home of Jewish residents since the early years of the 20th century. There are small Jewish settlements in Middletown and Odessa (both of which once had Hebrew Benevolent Societies), New Castle, Christiana, Glasgow, Seaford and Milford.

In World War II, over 700 Jewish men and women from Delaware served in the United States Armed Forces. The first Delawarean to die was Harry Fineman of Wilmington who



Daniel L. Herrmann

Wahl, Bernard Balick, Carl Goldstein, Herbert Cobin, Roxanna Arshat and Albert Stifel. Daniel L. Herrmann, a former president of the Jewish Federation of Delaware, was Chief Justice of the Delaware Supreme Court from 1973 to 1988. William Penn Frank, a columnist on the Wilmington Morning News for many years, has been a Wilmington



Irving S. Shapiro

fell at the Battle of Corregidor in April, 1942.

The highest statewide elective political office held by a Jew was the Attorney-Generalship, to which H. Albert Young was elected in 1950 and reelected in 1952. He subsequently served as president of the state Bar Association. James Rosbrow was Secretary of Labor. Alexander Greenfield was appointed U.S. Attorney for Delaware in 1964 and Ralph F. Keil was named to the same post in 1973. Among the lower court Jewish judges were Aaron Finger (1916-20), Robert H.

newspaperman for more than half a century. In 1973, too, the duPont Co., chose Irving S. Shapiro, a long-time attorney for the firm, as its chairman of the board and chief executive. Henry Topel served as chairman of the Democratic State Committee from 1972 to 1974.

**COUPON VALUE**

**\$1000 OFF**

**MAACO SUPREME PAINT SERVICE**

Now **\$279<sup>95</sup>** W/Coupon  
Reg. \$379.95

- Machine Sand Most Chips & Scratches
- Hand Sand Entire Car
- Spot Prime-Black Sand Where Necessary
- Chemical Cleaning
- Refinish with Durability Plus Catalyzed Enamel
- Apply Integrated Coat of Glass Extending U.V. Sun Screens
- Oven Baked Finish
- WRITTEN 2 YEAR GUARANTEE

**GOOD ONLY AT:**  
2400 GOV. PRINTZ BLVD.  
\*Must Be Presented Before Work Is Begun  
But After Free Estimate  
EXPIRES 11/15/88

**2400 GOV. PRINTZ BLVD.**  
**762-5777**  
Mon.-Fri. 8-5:30  
GOV. PRINTZ BLVD.  
24th ST.

1 MILE SOUTH OF MERCHANTS SQUARE  
**FREE ESTIMATES • EXPERT BODY WORK**

**BONUS COUPON**

**\$1000 OFF**

Installing Body Side Moulding  
(W/any Paint Service)  
EXPIRES 11/15/88

---

**BONUS COUPON**

**\$1000 OFF**

Tape Pin Stripes  
(W/any Paint Service)  
EXPIRES 11/15/88

---

**BONUS COUPON**

**\$1000 OFF**

Maaglo Vinyl Top Dye Same Color  
(W/any Paint Service)  
EXPIRES 11/15/88

(800) 645-6376

## FEW THINGS IN LIFE DELIVER SO MUCH.



And in the field of tax-deferred retirement vehicles, you'll find one that's unusually productive. The Kaleidoscope® Annuity Certificate. It can allow you to draw a lifelong retirement income. And it delivers guaranteed rates of interest with your choice of terms: 3, 5, 7, or 10 years.

**5 YEAR**  
**9.20%\***

With the Kaleidoscope Annuity Certificate, your interest rate will be locked in, and your money will be secure with North American. The company rated A+ (Superior)

\*Guaranteed rate is also the effective net annual yield.  
Rates current as of 9-15-88. Issued on GC-42A.

**North American Company**  
for Life and Health Insurance  
222 South Riverside Plaza, Chicago, Illinois 60606  
Note: This contract is available to Delaware residents only. We have other contracts for residents of other states.

by A.M. Best Company for financial strength and operating performance and whose history of stability is more than a century old.

So if you're searching for a safe, long-term retirement vehicle that won't have you running scared, call us and ask for the Kaleidoscope Annuity Certificate. Then watch how quickly your money multiplies.

**KEITH MONTOR**  
President

Delaware Financial Consultants, Inc.  
5301 Limestone Rd., Suite 121, Wilmington, DE 19808

(302)  
239-1444

### JEWISH INTRODUCTIONS INTERNATIONAL

Delaware's local, innovative & personalized Jewish Introductions Service.

Ages 21-101

Let Us Find That Special Someone

In Delaware Call

**1-800-442-9050**

40 Cities In The United States & Canada



We're not just another blin lady...  
**We do justice to your windows!**

**40% OFF**  
**LouverDrape Vertical Blinds**



**We Install at the Beach!**

- Draperies, too!
- Cornick
- Swags/Ballours
- Wallpaper

**MADE IN THE SHADE**  
**MADE IN THE SHADE**

Talleyville Towne Shoppes  
3652 Silverside Rd., Wilm.

**478-6082**

# JEWISH FEDERATION OF DELAWARE

101 Garden of Eden Road, Wilmington, DE 19803  
478-6200

President - Stephen E. Herrmann

Executive Director - Robert N. Kerbel

The Jewish Federation is the central Jewish communal body for the Jewish community of Delaware. It is the major budgeting, planning, and fund raising body for a host of local, national and overseas agencies. President, Stephan Herrmann, Henry Topel and Richard A. Levin, campaign co-chairpersons hold the key leadership positions for the 1988-89 campaign year.

The prime objective of the Federation is to serve the needs of the Jewish community at home and abroad. As a voluntary association of several thousand contributors,

the Federation hears different viewpoints and perspectives from men and women involved through service on committees, fund raising and on its board of directors.

## The Campaign

The major Jewish fund raising in Delaware is the annual Federation campaign which includes men and women volunteers of all ages contacting all Jews in the state. The monies collected are allocated to health, welfare,

educational, cultural and relief agencies in Israel, in the United States, in Delaware and the world over.

## Training And Programming

As coordinator of agency activities and community relations efforts, the Federation also serves as a programming and training body. One of its main challenges is the task of inspiring and training a

dedicated and informed leadership while providing the community as a whole with a continuous flow of updated information. One particularly successful program is the Leadership Development Program. Graduates of the program use their strengthened leadership skills to provide volunteer service to the community.

By supporting local agencies and organizations, the Federation assures the growth and continuity of vital Jewish functions such as Jewish education, care of the elderly, family counseling, resettlement of emigrating Jews, care for the handicapped, Jewish programming for university students and numerous other extended services.

## THE JEWISH VOICE

478-6200

Editorial Committee Chairman - Toni Young

Editor - Paula Berengut

The Jewish Voice is the only Jewish newspaper in the State of Delaware. The Voice provides news and analysis of local, national and international issues, with special attention paid to the political, economic, religious and social life of the State of Israel. There are always two pages of opinions on a variety of topics.

Regular features of The Jewish Voice include a thought-provoking opinion article called "On the other hand" and a Jewish version of Dear Abby called "Dear Rachel" (which is a ser-

vice of Jewish Family Service). Local Jewish community announcements and events are listed in every issue. Book and museum reviews appear regularly.

Special holiday issues are published at Rosh Hashanah, Hanukkah and Passover. Advertising supplements include this Newcomers' Guide, a Bridal/Party Guide, Back To School and Women In Business, among others.

The Jewish Voice is published by the Jewish Federation of Delaware and is overseen by an Editorial Committee.

## JCRC

478-6200

Director - Harriet K. Wolfson

The purpose of the Jewish Community Relations Committee of the Jewish Federation is:

1) To interpret Israel's position and needs to the American public and government;

2) To marshal public opinion on behalf of justice and freedom for Soviet Jews and Jews in Arab lands;

3) To counteract anti-Jewish activities and significant manifestation of insensitivities to Jewish concerns;

4) To educate the Jewish community and the general community about the lessons of the Holocaust;

5) To help assure a climate which permits the Jewish population to participate fully in the general life of the community and which fosters creative survival of Jewish

values and religious heritage. This can happen only when all groups are accorded equal opportunity, equal rights and equal justice, and through the promotion of the democratic system by working with community coalitions and organizations, both within and outside the Jewish community.

The Jewish Community Relations Committee operates through a steering committee of representatives of Jewish organizations and synagogues. Its work is accomplished through volunteer task forces and committees. There are currently five such task forces: Israel, Soviet Jewry, Interfaith, Domestic Concerns and the Halina Wind Preston Holocaust Education Committee. In addition, a

branch of JCRC exists in Lower Delaware.

Our Jewish Community Relations Committee is active in the National Jewish Community Relations Advisory Council (NJCRAC) which consists of 11 national and 114 community Jewish organizations. NJCRAC focuses on issues of concern to the Jewish community and educates on the positions to take on them as well as how to carry out those positions most effectively. Through a national planning process, NJCRAC produces an annual Joint Program plan designed to serve as an advisory guide by member agencies such as ours. Local community relations organizations are free to accept, reject or modify the Plan's recommendations according to local needs and preferences.

## ENDOWMENT FUND

478-6200

Director - Connie Kreshtool

The Endowment Fund was established to insure that educational, religious and social services are always available to the Jewish community. The Endowment Fund offers donors the opportunity to endow a service or institu-

tion of special interest to them. Such gifts provide a lasting legacy for the community and record the names of the contributors in perpetuity. Through a bequest and/or donations of cash, securities, real estate, life insurance,

State of Israel bonds and other property to the Jewish Community of Delaware Endowment Fund donors are helping to preserve Jewish values and the Jewish heritage for their children and their grandchildren.



**BERGER BROS. INC**

Office experts since 1919

3rd & Market Streets  
Wilmington, Delaware  
(302) 655-7166

LET US SHED SOME LIGHT ON ...



YOUR NEXT BUILDING OR REMODELING PROJECT.

THOMAS • CASABLANCA LIGHTING • ARTEMIDE



PADDLE FANS AND HEAT-VENTS by ...  
**FASCO**  
TRACK & RECESSED LIGHTING by ...  
**HALO**  
UNDERCABINET LIGHTING by ...  
**SIM-KAR**  
LITTLE INCH FLUORESCENT LIGHTING by ...  
**LIGHT CONCEPTS**  
DECORA SWITCHES AND RECEPTALS by ...  
**LEVITON**



6 UPSTAIRS SHOWROOMS by ...

**GROSS LIGHTING**

IPI • LOW VOLTAGE • CAPSYLITE BULBS • ARTUP

We Offer Whole House Discount Packages



**HOURS**  
M-F 8-5:30  
WED 'TILL 9 PM  
SAT 9 AM-3PM  
OTHER HOURS BY APPT.

**Gross**

LIGHTING CENTER  
SINCE 1919



4th & Orange St.  
WILMINGTON  
655-5561

COMING FALL OF '89  
ARCHITECTURAL SHOWROOM & LIGHTING LABORATORY

**DETAILING:**  
 Clean and Polish Exterior  
 6 Mo. or 1 Yr. Paint Protection  
 Clean Interior and Fabric Protection  
 Engine Shampoo

Rustproofing • Undercoating  
 Window Tinting • Security Systems  
 Unique Custom Accessories

Our Own  
 6 + 6 Interior & Exterior Detail  
**\$139<sup>00</sup>**

Love Your Car Appearance Center 2nd Street Greenhill Ave., Wilm.  
**654-6CAR**

**WHY BE ALONE?**  
 ... pick up the phone and call

**JEWISH DATING SERVICE**  
 You Just May Meet The Right Person  
 Effective • Inexpensive • Reliable • Tri-State

Call/Write - FREE QUESTIONNAIRE  
 P.O. Box 14393, Phila., Pa. 19115 **215-342-9951**

**Welcome!**

*Marvin Sachs*

The Commercial/Industrial Division of B. Gary Scott, Realtors welcomes Marvin Sachs to their *SuperMarketing Team*. Marvin with 25 years of real estate experience joins a select group of highly qualified real estate professionals who can provide a full range of commercial real estate services.

For commercial and industrial acquisition, for investment counseling, for comprehensive real estate services, call Marvin Sachs at B. Gary Scott, Realtors.

**B. GARY SCOTT**  
 REALTORS  
 A WSES company

COMMERCIAL/INDUSTRIAL DIVISION  
 301 "A" Street • Christina Gateway

A term market leader delivers the market on your terms:  
 Low fixed rates guaranteed for 10 years.

Transamerica Occidental Life introduces Trendsetter Level 10<sup>SM</sup>. Good news for clients who want long-term, affordable protection.

Trendsetter Level 10 provides the kind of stability clients are looking for in today's market. It offers a wide issue range (\$50,000 to \$10,000,000) and a 10% first-year

reduction on annual mode premium payments. Best of all, the low fixed rates are *guaranteed* for 10 full years.

To find out more about Trendsetter Level 10 and the A+ (Superior) Best's-rated company that offers it, call us today.

In Delaware: 302-475-2250  
 In Pennsylvania: 215-459-5523  
 In New Jersey: 800-633-8584

**TRENDSETTER LEVEL 10 POLICY**  
 Annual Premium, Preferred Nonsmoker

Issue Age	Annual Premium**		
	\$100,000	\$250,000	
30	Male	\$ 137	\$ 268
	Female	130	250
40	Male	209	448
	Female	171	353
50	Male	409	948
	Female	333	758
60	Male	886	2,140
	Female	704	1,685

\*Graded Premium Whole Life Policy. Not available in all jurisdictions.  
 \*\*Includes \$50 policy fee. Rates for standard nonsmokers and smokers available.



Frank Kesselman, CLU

For more about Trendsetter Level 10, mail to:  
 Transamerica Occidental Life Insurance Company,  
 Frank Kesselman, CLU, 2000 Foulk Road,  
 Foulk Road Office Park Plaza,  
 Wilmington, DE 19810.

Name \_\_\_\_\_  
 Address \_\_\_\_\_  
 City \_\_\_\_\_ State \_\_\_\_\_ Zip \_\_\_\_\_  
 Phone \_\_\_\_\_  
 Date of Birth \_\_\_\_\_  
 Smoker \_\_\_\_\_ Non-Smoker \_\_\_\_\_  
 Male \_\_\_\_\_ Female \_\_\_\_\_  
 Insurance Broker \_\_\_\_\_

**Transamerica**  
 Life Companies

Transamerica Occidental Life Insurance Company

Working together is the best policy.®

The shortest distance between you and the right physician.

**HEALTH HOOK-UP**  
 421-4180

With Health Hook-Up, our free physician referral service, the gentle care of St. Francis is as close as your telephone. With just one phone call, you can have the facts you need to choose the right physician, right where you live or work.

Our Health Hook-Up representative can give you vital information about the many physicians in all major medical specialties who have qualified for medical privileges at St. Francis Hospital. You can learn a physician's number of years in practice, medical education, board certification, and acceptance of major insurance plans.

You can also find out whether the physician makes house calls, or provides care to nursing home patients. And, if you like, our representative can forward your call directly to a physician's office so that you can promptly schedule an appointment.

Why wait for an illness to find a physician, when Health Hook-Up is only a phone call away? Just call 421-4180 any time Monday through Friday from 8:30 AM to 5 PM.

The Gentle Care of  
**ST. FRANCIS HOSPITAL**

7th & Clayton Streets • Wilmington, DE 19805

## LOCAL CHAPTERS OF NATIONAL ORGANIZATIONS

**Hadassah**  
 Wilmington Chapter  
 President: Judy Steibel  
 6 Devon Court  
 Wilmington, DE 19810  
 H: 478-6822  
**Sabra Group**  
 President: Faith Brown  
 2205 Greenstone Road  
 Wilmington, DE 19810  
 H: 475-8065  
**Shalom-Chai Group**  
 President: Ruth Kerbel  
 2510 Fairlee Road  
 Wilmington, DE 19810  
 H: 478-5577  
**Newark Chapter**  
 President: Rochelle Katz  
 1015 Summit View Drive  
 Newark, DE 19703  
 H: 731-4177  
**Lower Delaware Chapter**  
 President: Helen Berman  
 P.O. Box 15  
 Dover, DE 19903  
 H: 678-0550  
 or  
 Amy Jaslow  
 56 Park Haven Road, GG 31  
 Dover, DE 19901  
 H: 678-9614

**Jewish War Veterans**  
 Department of Delaware  
 Israel Weiner  
 6 Ridgewood Circle  
 Wilmington, DE 19809  
 H: 764-2120  
 Post No. 525 - Harry Fineman  
 Norman Robbins  
 31 S. Dickens Road  
 Claymont, DE 19703  
 H: 798-8952  
 Post No. 747 - Nathan Balick  
 Samuel Braxman  
 302 Shipley Road  
 Wilmington, DE 19809  
 H: 762-4646  
 Post No. 767 - Arthur Blatman  
 Samuel Geller  
 310 West 38 Street  
 Wilmington, DE 19802  
 H: 764-0636  
**Chabad-Lubavitch of Delaware**  
 Director: Rabbi Chuni Vogel  
 1306 Grinnell Road  
 Wilmington, DE 19808  
 H: 478-4400  
 Chabad House at the  
 University of Delaware  
 630 Lehigh Road, Apt. O-9  
 Newark, DE 19711

**B'nai B'rith Lodge No. 470**  
 President: Robert J. Berman  
 1401 Stoneleigh Road  
 Wilmington, DE 19810  
 H: 478-3984  
**B'nai B'rith Women of Delaware**  
 President: Judy Goldbaum  
 1621 Windybush Road  
 Wilmington, DE 19810  
 H: 475-5191  
**Hillel**  
 Counselor: Brant Rosen  
 64 East Main Street  
 Newark, DE 19711  
 453-0479  
 Chair of Advisory Committee:  
 Larry Kalkstein  
 4 Kelly Lane  
 Newark, DE 19711  
 H: 239-3503  
**Alpha Epsilon Pi Fraternity House**  
 Newark 19711  
 314 Wyoming  
 731-0440  
**Jewish Historical Society**  
 President: Morris Levenberg  
 306 West 37 Street  
 Wilmington, DE 19802  
 H: 762-1323

**Labor Zionist Alliance**  
 Financial Secretary:  
 Thomas Seidel  
 205 Harvey Road  
 Claymont, DE 19703  
 H: 764-8463  
**Montefiore Mutual Benefit Society**  
 I. Paul Drowos  
 6 Colony Blvd., No. 209  
 Wilmington, DE 19802  
 H: 762-8554  
**National Council of Jewish Women**  
 Wilmington Section President:  
 Jean Blumenfeld  
 732 Taunton Road  
 Wilmington, DE 19803  
 H: 478-3835  
**ORT**  
 Sandy McBride  
 2618 Pin Oak Drive  
 Wilmington, DE 19810  
**LOCAL ORGANIZATIONS**  
**Brandywine Country Club**  
 2822 Shipley Road  
 Wilmington, DE 19810  
 478-2110  
 Contact Person: Joseph Horwitz

**These Jewish Organizations Welcome Your Membership**

**Local Organizations**

**Brandywine Country Club**  
 4201 Concord Pike  
 Wilmington, DE 19803  
 478-2100  
 President  
 Sylvan Taub

**Jewish Historical Society**  
 306 West 37 Street  
 Wilmington, DE 19802  
 H: 762-1323  
 President  
 Morris Levenberg

**PHILIP BERGER**  
 Associate Broker

**Weichert**  
  
**Realtors®**

Office: 302-478-3800  
 Res: 302-764-8384



Residential-Commercial

**OLSEN**  
 TEMPORARY SERVICES

**WE KNOW HOW TO HELP**

WILMINGTON .....	575-1700
NEWARK .....	738-3500
CONCORD PLAZA .....	478-6110
DOVER .....	1-734-5379

Gilbert J. Spiegel      Pat Spiegel Chalphin  
 Founder      President

**ISRAEL BONDS**

For sale, reinvestment and redemption information call:

**658-9337**

**The Quality Of Light**

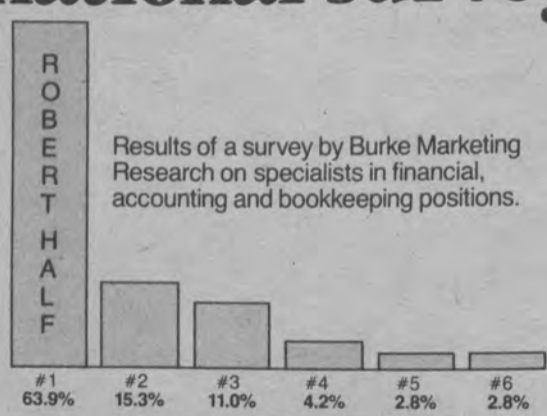


**MATTES LIGHTING SERVICE**

Signs  
 Interior & Exterior Lights  
 Parking Lot Lights

**656-9933**

**Robert Half rated best by 4 to 1 in an independent national survey**



ROBERT HALF	#1	#2	#3	#4	#5	#6
	63.9%	15.3%	11.0%	4.2%	2.8%	2.8%

Results of a survey by Burke Marketing Research on specialists in financial, accounting and bookkeeping positions.

Personnel directors of a cross-section of large corporations were asked this question:  
*"In your opinion, of the personnel recruiters that specialize in financial, accounting and bookkeeping positions, which one is best?"*

The result: Robert Half was rated best by 4 to 1 over the next national specialist in financial, accounting and bookkeeping personnel.

Next time you're looking for the best accountants, financial services professionals or bookkeepers, call Robert Half, the specialist rated best by personnel experts.

**ROBERT HALF® OF WILMINGTON, INC.**  
 Brandywood Plaza  
 Foulk & Grubb Roads  
 Wilmington, DE 19810  
 475-4500

© 1987 Robert Half International Inc. 150 offices on three continents.

# EDUCATION

## JEWISH COMMUNITY CENTER CHILD AND FAMILY DIVISION

101 Garden of Eden Road, Wilmington, Delaware 19803

Committee Chairperson - Cindy Imber

Division Director - Arlene F. Bowman

### Morning Pre-School Program (Ganon)

9 a.m.-11:30 a.m.  
Two year olds through Kindergarten: This educational program helps prepare children for school, while developing their Jewish identity. There is an excellent staff-to-child ratio and all teachers are degreed. Activities include language development, Jewish enrichment, number

readiness, arts and crafts, music, outdoor play and a snack.

### Full Day Childcare (Maon Yom)

7:15 a.m. - 5:45 p.m.  
Walking one and two year olds: Activities such as arts and crafts, story time, outdoor play, nap time swimming and gym are geared to this age group.

Three and four year olds: Mor-

ning pre-school and the afternoon enrichment program are combined for these children.

### Afternoon Recreational/Enrichment Programs (Maon)

11:30 a.m.-5:45 p.m.  
Three year olds through Kindergarten: Includes lunch, a rest period and a variety of age-appropriate social and recreational activities such as arts and crafts, cooking,

swimming, gym and outdoor activities. Optional enrichment classes available for an additional fee. Transportation is available for children enrolled in Lombardy, Forward, P.S. DuPont and Brandywine Elementary Schools.

### After School Childcare (Moadon)

2:30 p.m. - 5:45 p.m.  
For children in Kindergarten through sixth grade: This pro-

gram provides the social and recreational activities which include gym, outdoor games, craft projects, swimming, plus homework supervision and assistance. Optional enrichment classes available at an additional fee. Transportation is available for children enrolled in most area Public Schools. Hebrew School transportation is also available.

## YOUTH GROUPS

### B'nai B'rith Youth Organization

BBYO is housed at the Jewish Community Center. AZA (boys) and BBG (girls) serves teens in 9th through 12th grades. This program provides area teens with a chance to develop leadership skills through participation in a variety of social, athletic, cultural, educational, religious activities and community service.

For more information about BBYO contact:

Dover BBYO	Mark Wintjen	President	734-1089
Newark BBYO	Jennifer Prybutok	President	454-7546
Wilmington AZA	Matt Meyer	President	888-2060
Wilmington BBG	Fran Jacobs	President	475-8687

### Beth Emeth Synagogue Youth Group

BESTY is a Mid-Atlantic Federation of Temple Youth which provides programs for 9th through 12th graders. The youth group helps teens develop leadership, meet new friends, participate in social, athletic, educational and religious activities. NIFTY is the national organization of the youth group. Regional and national conclaves are held throughout the year.

For more information about BESTY contact:

BESTY	9th thru 12th grades	Advisor: Simon Anolick	429-8934 - Home
			733-3101 - Work
BESTY Jrs.	7th & 8th grades	Advisor: Jeff Weiner	762-5858 Synagogue

## ALBERT EINSTEIN ACADEMY

101 Garden Of Eden Road, Wilmington, DE 19803  
(302) 478-5026

Principal - Eleanor Weinglass President - Dr. Avrene Brandt

The Albert Einstein Academy combines an excellent secular education with a rich background in Jewish traditions, Bible, history and Hebrew. In small classroom settings, this school combines the best of both worlds, the pursuit of academic excellence and a positive sense of Jewish identity. New students are welcome in all grades.

## GRATZ HEBREW HIGH SCHOOL

101 Garden of Eden Road  
Wilmington, DE 19803  
478-5026

Principal - Elaine Friedberg

President - Perry Goldlust

Delaware Gratz provides a five-year program of Jewish studies on a secondary level which includes Hebrew language and literature, Bible, Jewish history, ethics and issues. High school and college credits as well as teaching certificates are granted to those who complete the curriculum.

Sundays 10 a.m.-1 p.m.  
Tuesdays and Thursdays 7 p.m.-9:10 p.m.

## The Judaic Workshop

A little known program, the Judaic Workshop provides a Jewish educational experience to educationally exceptional young adults who have learning disabilities and who could not be served by congregational religious schools. Presently housed at Adas Kodesch Shel Emeth, a Jewish enrichment program is held every week for those who would not otherwise have any Jewish education.

For more information contact Helen Gordon at (302) 762-2705.

## Ki Tov Classes

Ki Tov is a program for children who cannot be mainstreamed into regular afternoon class, but who also do not belong in the "Judaic Workshop for Exceptional Children." The children enrolled in this program are capable of learning about themselves as Jews and about Holidays, Bible and language, but must be taught in a small class setting using individualized instruction and attention. In the past, Jewish education for these children has been neglected. The program is financially supported by the Jewish Federation of Delaware.

For more information contact Helen Gordon at (302) 762-2705.

All Delaware synagogues except Machzikey Hadas have religious school programs. Contact the individual congregation for information about these religious schools.

## B'nai B'rith Hillel Director - Brant Rosen

B'nai B'rith Hillel has a presence on the University of Delaware campus 300 students strong. Currently they hold several activities a week, providing a mix of social, cultural, religious and educational programs. Programs include: bagel and lox brunches, Shabbat dinners, weekly Kabbalat Shabbat services, movie nights, trips to nearby cities, and Israel nights. In addition to regular events and programs, students this year were able to attend high holiday services on campus. Steady growth of this organization will soon necessitate a move to larger facilities.

# We educate your kids as if the future of our world depends on it.

The educational program at Akiba is designed to prepare the future cultural, civic, business, academic and professional leaders of America. And we can't do that by just teaching the three R's.

We do it by instilling a commitment to a code of ethics. By guiding them to a commitment to their community. By opening them to an understanding of their Jewish history and heritage. And by aiding them to develop a love of learning.

Last year 100% of our graduating class took the next step in their road to personal accomplishments by attending the finest colleges and universities in America.

Next year it can be your son or daughter's turn to join the achievers. At Akiba.

For an application or information on transportation and tuition aid, please contact Director of Admission Linda Schwartz.



AKIBA  
HEBREW ACADEMY  
223 North Highland Avenue  
Merion, PA 19066  
215-839-3540

# Welcome To Delaware!



**BeBeep** a toy shop

offering  
Specialty toys and personal service  
Because your child's smile matters  
(302) 478-2667

Brandywine Square, 2900 Concord Pike  
Wilmington, DE 19803



*Discover a different Delaware....*

the one you see from the windows of a vintage train's passenger coach. View the woodlands and open countryside of the Red Clay Valley aboard the Wilmington & Western Railroad. During it's May through October operating season, the railroad's schedule includes weekend trips to Mt. Cuba Picnic Grove and the quaint village of Hockessin in addition to special events the whole family will enjoy.

For information on train times and fares call (302) 998-1930.  
All Aboard!



WILMINGTON & WESTERN RAILROAD



**Wilmington Montessori School**  
25 Years of Excellence in Education

**Announcing The Opening of A New 3-Day Preschool Class**

- At Buzz Ware Village Center, Arden
- Tues., Wed., Thurs. 8:45-11:45 a.m.
- Before School Care Available, 7:30 AM
- Home-like Classrooms

1400 Harvey Rd.  
Wilmington, DE  
302-475-0555

Head  
Marie M. Dugan

**Welcome To Delaware**

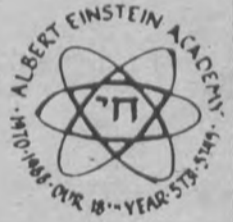
If you want your children to follow in *your* footsteps...  
be very careful where you place **their** feet.



**ALBERT EINSTEIN ACADEMY**

101 Garden of Eden Road  
Wilmington, DE 19803  
478-5026

Eleanor Weinglass - Principal



**All the wisdom and care a family doctor gives.**



**And pharmacy, X-ray and lab tests.**

Expert care and extra convenience. It all starts with your family doctor — the doctor you choose at The HMO of Delaware. But it doesn't end there.

The health care services you use most are conveniently located right at The HMO. You can get your prescriptions filled, get an X-ray, or have lab tests. See your physical therapist, nutritionist or mental health counselor. Or take classes that can help you stay healthy. All without ever leaving The HMO building.

And The HMO, a BlueMax choice, provides Blue Cross Blue Shield coverage for authorized hospital and surgical expenses.

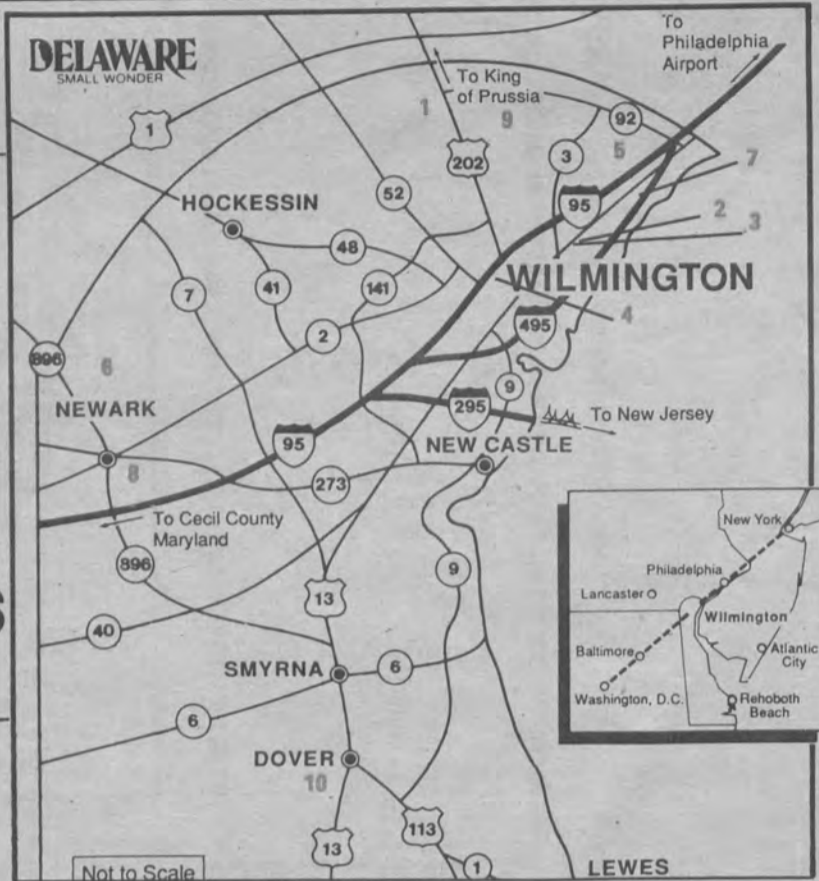
To find out more about The HMO, call 421-BLUE for a free brochure.



**Everything a family doctor gives you and much more.**



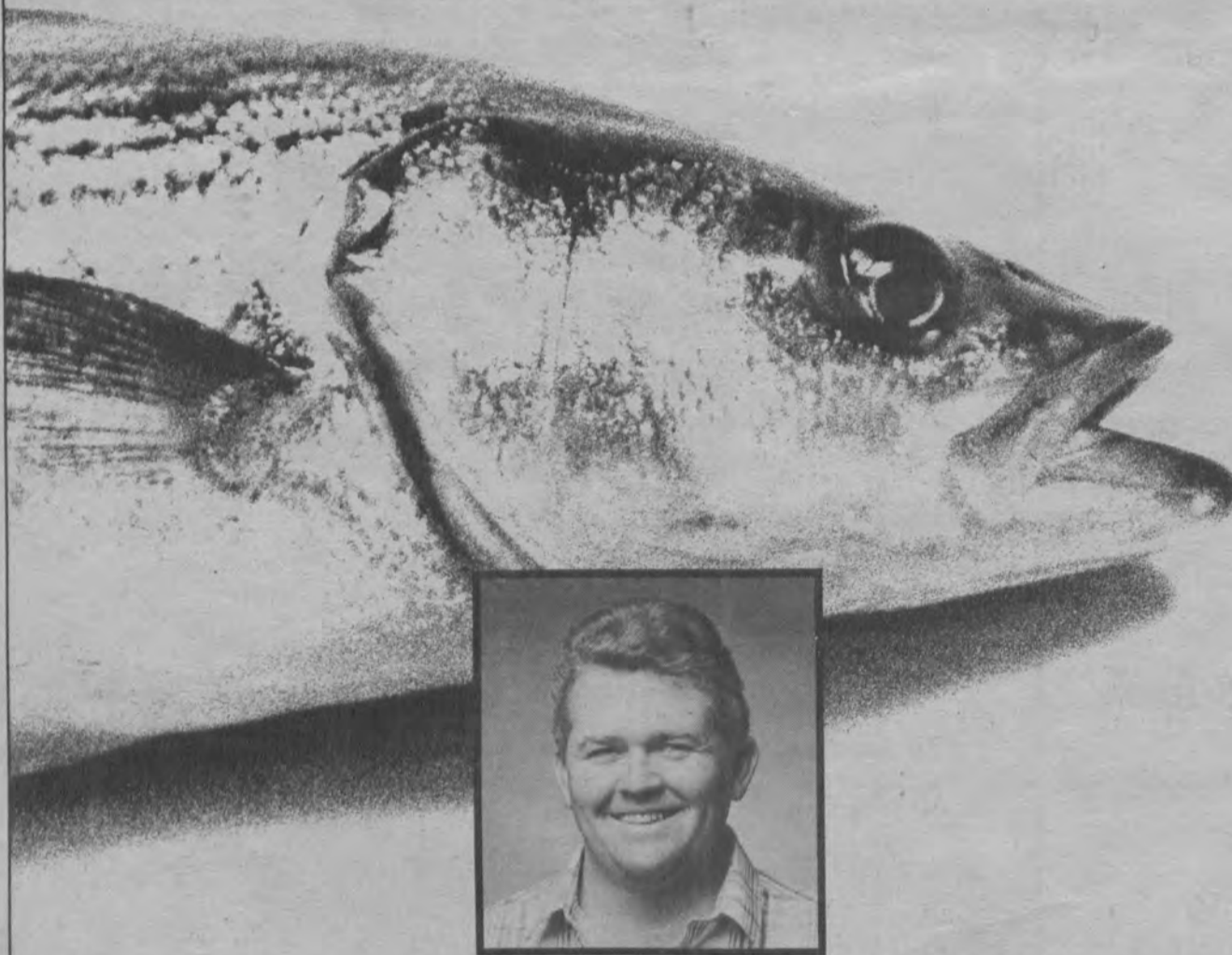
# Locating Delaware's Jewish Organizations



## Map Key

- 1 - Jewish Federation of Delaware  
Jewish Voice  
Jewish Community Center  
JCC Preschool  
Jewish Family Service  
Albert Einstein Academy  
Gratz Hebrew High School  
Jewish Family Campus
- 2 - Adas Kodesh Shel Emeth Congregation
- 3 - Beth Emeth Congregation
- 4 - Beth Shalom Congregation
- 5 - Machzikey Hadas Congregation  
B'nai B'rith House
- 6 - Temple Beth El
- 7 - Kutz Home
- 8 - Hillel  
Chabad House  
Alpha Epsilon Pi Fraternity House
- 9 - Brandywine Country Club
- 10 - Congregation Beth Shalom

## Gene Lowe creates power for thousands of homes and a home for thousands of fish.



Gene Lowe and his co-workers at the Delmarva Power plant in Vienna, Md. produce electricity for thousands of homes. But on their lunch hour they're involved in a different kind of production. They're helping to restore the Striped Bass population by breeding them right at the plant and releasing them into the Nanticoke River.

Gene's been fishing the river since he was a boy. So he took a personal interest when Delmarva Power helped the Delmarva Ecological Laboratory set up a shore side spawning facility. Concerned about the declining Striped Bass population, Gene and his plant buddy Ed Larmore suggested building an on-site breeding pond for the fish to grow in. In just three years, Gene, Ed and other Delmarva Power volunteers, have helped raise over 42,000 fish to restock the Chesapeake Bay.

Conserving our ecology is just one way Delmarva Power people like Gene are working to make life better for all of us today and tomorrow. We're also building new power plants and finding other ways to meet your growing energy needs. Because the Delmarva Peninsula is more than just where Gene works. It's the special place he calls home.

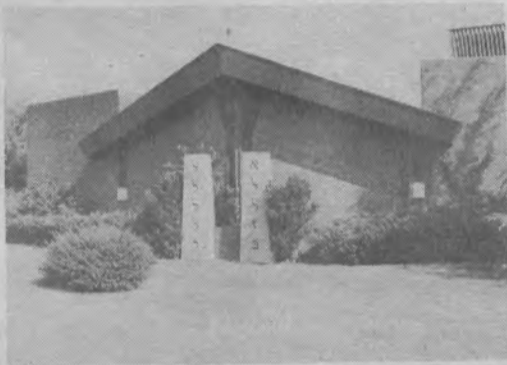
**Delmarva Power**

Energy at Your Service, Today and Tomorrow.





# CONGREGATIONS

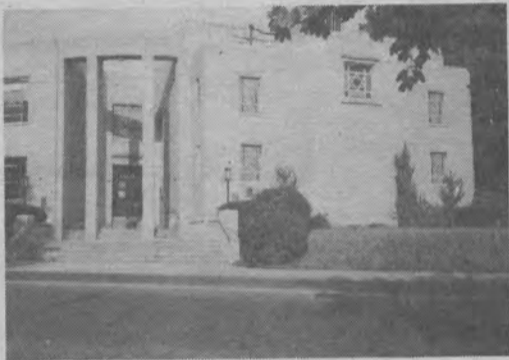


**Adas Kodesch Shel Emeth  
(Traditional)**  
Washington Blvd. & Torah Drive  
Wilmington, DE 19802  
Telephone: 762-2705

Rabbi Emeritus: Leonard B. Gewirtz  
Cantor: Morris Markowitz  
President: Howard H. Simon

**Beth Emeth Congregation  
(Reform)**  
300 Lea Boulevard  
Wilmington, DE 19802  
Telephone: 764-2393

Rabbi: Peter Grumbacher  
President: Manfred Katz



**Congregation Beth Shalom  
(Conservative)**  
18th St. & Baynard Blvd.  
Wilmington, DE 19802  
Telephone: 654-4462

Rabbi: Kenneth Cohen  
Cantor: Norman Swerling  
President: Celina Riebman

**Temple Beth El  
(Reconstructionist)**  
301 Possum Park Road  
Newark, DE 19711  
Telephone: 366-8330

Rabbi: David Kaplan  
President: Andrew Zetlan



For  
Sisterhoods, Brotherhoods,  
Men's Clubs

\*\*\*\*\*

Contact  
individual synagogues

**Machzikey Hadas  
(Orthodox)**  
B'nai B'rith Building  
8000 Society Drive  
Claymont, DE 19703  
Telephone: 792-1545

Cantor: Marvin Zuckerman  
Assistant: Ignac Moskovic  
Acting President: Jacob Levine

**Beth Shalom Congregation  
(Conservative)**  
Queen & Clara Streets  
Dover, DE 19901  
Telephone: 734-5578  
President: Charles Salkin



*Delaware's  
Synagogues  
Are  
Waiting  
To  
Welcome  
You*



**NEW CASTLE FARMER'S MARKET**  
*Finest and Freshest Meats and Produce  
Delicious Baked Goods*  
**SOMETHING FOR EVERYONE**

Rt. 13 across from Wilmington Airport  
Open Friday & Saturday 10-10; Sunday 10-6  
328-4101

**BOYD'S FLOWERS**

*Where artists bring beauty to bloom.*

421-2900  
2013 PENNA. AVE.  
824 MKT. ST. MALL  
2900 CONCORD PK.



**DOLLAR** THE LIVIN'  
RENT A CAR IS EASY

When you rent an 8 or 15 Passenger Van with or without a driver, carry your Vacation Luggage and Golf Clubs and let the livin' be easy for you.

5 Convenient Locations

DAVID ROSENBLATT

655-7117

*Wilmington's Only  
International Gift Shop*

**CRAFTS...FOLK ART  
JEWELRY...CLOTHES  
SOAPS AND SCENTS  
GOURMET GIFT BASKETS**

*If We Weren't A Shop  
We Would Be A Museum*

**ARTISANS III**

715 Market Street Mall  
Mon.-Fri. 10-5 • Sat. 11-4 • (302) 656-7370



## JEWISH FAMILY SERVICE

101 Garden of Eden Road  
Wilmington, Delaware 19803  
478-9411

President - Leslie Newman

Executive Director - Arnold Lieberman, LCSW

The agency office is open daily from 9:00 a.m. to 5:00 p.m., and Wednesday from 1:00 p.m. to 9:00 p.m. All appointments must be scheduled in advance by calling the office. Fees are charged on a sliding scale, and some counseling services are covered by health insurance. Although the agency has a Jewish orientation, the services are available to anyone in need of help. Strict rules of confidentiality are maintained.

Jewish Family Service offers a range of services for Jewish individuals and families.

### Individual and Family Counseling

The Jewish Family Service offers skilled professional counseling in dealing with personal and family problems such as marital difficulties, parent-child relationships, mental and physical health, individual adjustment, and changes in life situations.

### Special Services to the Elderly

Services include counseling, friendly visiting, monitoring, linkage to needed services, and case management.

### Jewish Family Life Education

Group discussion designed to enable individuals and families to better cope with phases of normal development and situational stress. These programs also promote the growth of Jewish identity and

the Jewish family and community.

### Communal Services

Services include visitation to Jewish patients in institutions; holiday assistance; assistance to Jewish transients; and limited material and financial aid.

### Information and Referral

Jewish Family Service can help if you are not sure what kind of help you need;



whether it exists; where it is to be found; or how to avail yourself of it.

## MILTON & HATTIE KUTZ HOME

704 River Road, Bellefonte, Wilmington, DE 19809, 764-7000

President - Carolyn B. Silverman

Director - Dan Thurman

Kutz Home Auxiliary - Faith Goldman

The Kutz Home offers its residents the security of a comprehensive medical, nursing, religious, recreational and social program. The Home is geared toward maximizing the individual resident's living satisfactions through meaningful and enriching activities.

Where possible, residents are involved in community programs in addition to the many and diverse ongoing refurbishing - now nearly 30 years old.

Located in a picturesque setting, the Kutz Home is a modern and attractive facility.

Funds raised by the Kutz Home Auxiliary enable ongoing refurbishing - now nearly 30 years old.

Food service at the Home is supervised by a *Mashgiach* to assure *kashruth*. Sabbath and holiday services are conducted in the Home's synagogue. The Kutz Home is licensed and accredited by government regulatory agencies as an intermediate and a skilled nursing facility, and participates in the *Medicaid* program. Admission to the *Home* is based



Kutz Home

strictly on need; inability to pay for care is never an obstacle. Lay leadership in-

cludes: Carolyn B. Silverman, Kutz Home president; Faith Goldman, Auxiliary president.

(302) 762-3684

furniture repairs  
in home & office

### a refinishing touch

repairs of nicks, dents & cigarette burns  
specializing in moving damages & ins. claims  
sewing of torn or split seams

604 hillcrest ave.  
wilmington, de 19809  
michael a. shur

### Bob Weiner Jewish Folk Singer

With or Without Guitar

Israeli  
Yiddish  
Chassidic  
American  
Folk Music

762-1029  
658-8700

Invitations - Announcements  
Stationery - Business & Social  
Party Accessories  
Personalized Items, Etc.

"The Finest Selection  
of Exclusive Papers  
and Gifts"

Charlotte Fischer 656-8604



You need the additional strength of B'nai B'rith's

MediGap PLUS  
covers you for:

- 100% of most surgeons' and anesthesiologists' fees

B'nai B'rith  
Members' Insurance Program

Underwritten by:



# MEDI GAP PLUS

Medicare Supplement

MediGap PLUS  
also offers:

- New and expanded skilled nursing facility benefit
- Improved private duty nursing option
- Acceptance guaranteed for B'nai B'rith members and their spouses over 65 (We enroll new members.)

Pre-existing conditions not covered for the first 3 months.

For full details, contact:

B'nai B'rith Members Insurance  
Suite W-800  
5100 State Road  
Drexel Hill, PA 19026  
(215) 259-1560

Because Medicare  
is not enough. MOD AS-13077

YES, I'm interested in B'nai B'rith's MediGap PLUS Medicare Supplement.

Please have a B'nai B'rith representative contact me with more information.

Name \_\_\_\_\_ Age \_\_\_\_\_  
Address \_\_\_\_\_  
City \_\_\_\_\_ State \_\_\_\_\_ Zip \_\_\_\_\_  
Home Phone \_\_\_\_\_ Office Phone \_\_\_\_\_

JV

Please Support  
Our Advertisers

## B & B tickettown

322 NINTH ST. PLAZA • WILMINGTON, DE 19801  
TELEPHONE: (302) 656-9797 OR (215) 459-3283

Authorized Ticket Agency For The Delaware Valley

- Tickets for all Sports-Concerts-Theatre In Delaware/Philadelphia area
- Use your MasterCard-Visa-Discover-WSFS for mall orders

To Advertise Call  
**478-6200**

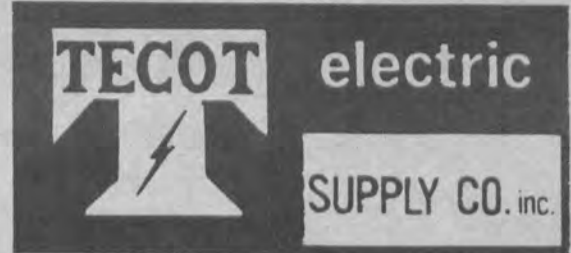


Isn't it time you  
Shopped at **THE SMOKE SHOP?**  
Everyone else does!



**THE SMOKE SHOP**

Wholesale - Retail - Mail Order  
"Often Imitated - Never Duplicated"  
Delaware Ave. at Dupont St.  
Wilmington • (302) 655-2861  
(215) 358-1324



Main Office  
114 Concord Ave., Wilmington, DE 19802  
(302) 421-3900

Branch  
501 Interchange Blvd.,  
Newark, DE 19711  
(302) 368-9161

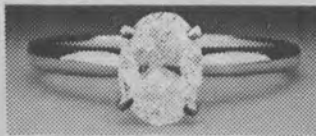
Branch  
1030 Boot Road  
Downtown, PA 19335  
(215) 873-0440

Tecot Systems Division  
111 W. 22nd Street  
Wilmington, DE 19802  
(302) 421-3935

Bgl. Supply Division  
2000 W. 41st Street  
Baltimore, MD 21211  
(301) 554-5800

**Quality.**

**Why settle for anything but the best?**



Quality is important to you in everything you own. But it's even more important when you're choosing a diamond. Because quality is what gives a diamond its rare beauty, its dazzling sparkle.

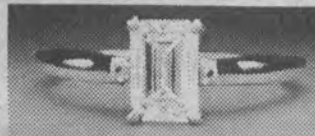
What is it that determines the quality of a diamond? The 4C's — Cut, Color, Clarity and Carat-weight — are the important characteristics that give a diamond its value. And to understand the 4C's is to understand the difference between diamonds.



Cut is the precise formula for cutting a diamond to allow the maximum amount of light to pass through. Color refers to the different gradations from exceptional white to yellowish. Quality is also determined by Clarity, the degree to which a diamond is free of

interior and exterior flaws. Finally, there is Carat-weight, the size of the diamond.

Fine quality diamonds simply look better, and will enhance any jewelry design. Come in and see our wide selection of fine quality diamonds in elegantly designed settings. You'll see that all diamonds are not the same.



Diamond Importers  
Graduate Gemologists  
Jeweler on Premises

*A. R. Morris*  
**Jewelers**

802 Market Street  
Wilmington, Delaware 19801  
(302) 658-4013

Two Blocks from Hotel DuPont

**4C** Your guide to diamond quality and value.



Friday 10 a.m.-11 p.m.  
Saturday 10 a.m.-10 p.m.  
Auction 7 p.m.

An authentic farmer's market in the heart of Delaware County

**The Area's Largest Selection of Amish Foods and Merchandise**

Come and enjoy a unique country shopping experience at Booths Corner Farmers Market and Auction. From mouth-watering delicacies to Amish quilts, needlework, handicrafts and folk art, Booths Corner offers something for every shopper.



Booths Corner Farmers Market and Auction is located just north of the Delaware line at Foulk and Naamans Creek Roads (Routes 261 and 491).

**GILPIN**  
REALTORS

**CHAREN SCHNETTER,**

Realtor Associate  
Licensed in Delaware & Pennsylvania

Office: (302) 575-0880  
Home: (302) 478-6911

**Please Support Our Advertisers**

- \*\*\*\*\*  
\* Don't hesitate to call \*  
\* Tom Seidel, your Fuller \*  
\* Brush Man. \*  
\*  Mops/Brooms \*  
\*  Duster Spray \*  
\*  Brushes \*  
\*  Moth Deod. Blocks \*  
\*  Stain Spray \*  
\*  Detergent \*  
\*  Window Cleaner \*  
\*  Sweeper \*  
\* (302) 798-1770 \*  
\*\*\*\*\*



**This is all you'll have to lift when you join the Senior Service Network**

One call is all it takes to stay independent

Senior Service Network was created for those who want to live at home, but can't manage it alone. It offers a la carte support services designed to help maintain your independent lifestyle at affordable prices: ► housecleaning ► transport to appts, errands ► friendly visits ► painting ► carpentry ► decks ► gutter repair ► roofing ► respite/caregiver services ► bathing/grooming/dressing ► nursing care ► Senior Service Club ► and more.

Joining is easy. Just fill out the coupon and send in your \$15.00 membership fee.

Or call for more information. We'll send your membership card along with a special coupon package that further discounts our services. Join or call today.

New Castle County

**323-8200**

\*or toll-free in Delaware 1-800-322-4436

Kent and Sussex Counties

**645-5855\***



Senior Service Network is sponsored by the Visiting Nurse Association of Delaware, a non-profit agency. Supported with funds from the Robert Wood Johnson Foundation.

Mail to:  
**SENIOR SERVICE NETWORK**  
VNA Delaware, One Read's Way  
New Castle Corporate Commons  
New Castle, DE 19720  
Name \_\_\_\_\_  
Address \_\_\_\_\_  
 Money Enclosed

# JEWISH COMMUNITY CENTER

101 Garden of Eden Road, Wilmington, Delaware 19803  
(302) 478-5660

President - Martin I. Lubaroff

Executive Director - David H. Sorkin



The Jewish Community Center (JCC), a non-profit membership organization and a communally concerned institution, provides the Delaware Jewish community with diverse and extensive services. The Center offers its members and its community a central place in which, individuals, whole families, groups or organizations can best express their interests and have their social, intellectual, cultural or recreational needs met.

The Center provides Jewish educational programs, holiday celebrations, Jewish cultural and arts programs of Jewish communal interest sponsored by the Israel Federation of Delaware. In addition, the Community Center offers its facilities to an ever enlarging number of Jewish organizations who use its building for their programs and services.

- Some of the specific activities sponsored by the Jewish Community Center are:
- Pre-School and Day Care**
- Children's classes and play groups
  - After school childcare program with transportation available
  - School vacation specials
  - Teen youth groups, lounges, specials, trips and classes
  - Extensive health and physical education facilities
  - Racquetball courts
  - Tennis courts
  - Full court gymnasium
  - Indoor swimming pool
  - Adapted aquatic facilities for handicapped individuals
  - Fitness center (Universal machine, Keiser Cam II equipment, sit-up boards)
  - Wellness Center (Nordic Track Skier, Fitron Ergometer, rowing machine)
  - Health and fitness classes and programs for all ages
  - Jewish lecture series, films, cultural arts
  - Jewish holiday celebrations
  - Art gallery
  - Family-oriented programs and celebrations
  - Senior Center with daily meals and transportation, program and trips
  - Jewish Life Education programs
  - Summer Day Camp
  - Family Campus (all new facilities)
  - State-of-the-art aquatics center
  - Multi-purpose sports fields
  - Outdoor amphitheatre for community concerts and events
  - Nature and shade pavilions
  - Shuffleboard court
  - Outdoor basketball court
  - Hiking trails through the Brandywine Creek State Park



Jewish Family Campus



## Jewish Singles

A unique opportunity awaits young, Jewish singles between the ages of 21 and 31. Over 280 people have already experienced activities ranging from Happy Hours to Bagel Brunches, picnics to sporting events. Events are scheduled. The Jewish Singles group is an excellent opportunity to meet people, network and make friends. If you would like to either participate in or plan activities, contact the Jewish Community Center at 478-5660.



Jewish Community Center

## creative cooking

branmar plaza  
475-0390

christiana  
mall  
366-7484

powder mill  
square  
654-9012



**Suede & Leather  
Repairs & Alterations**  
Fairfax Shopping Center  
Rt. 202 (Concord Pike)  
652-6725

## You Will Love Our Wedding And Party Supplies!

- Paper Plates
- Plastic Cups
- Cutlery
- Balloons
- Napkins
- Catering Supplies
- Party Favors
- Shower Umbrella

Easy In - Easy Out  
Off Street Parking

825 N. Union St.  
Wilmington  
**Gorland and Mann** 655-1514

## TAKE-A-BREAK

- COFFEE SERVICE
- VENDING MACHINE SERVICE
- COFFEE CATERING
- BOTTLED WATER SERVICE
- FOOD MANAGEMENT SERVICE

FAST, LOCAL SERVICE. BRAND NAME PRODUCTS.  
ATTRACTIVE, FUNCTIONAL EQUIPMENT.  
RADIO DISPATCHED REPAIR SERVICE.

MICROWAVE & REFRIGERATOR  
LEASING

658-8571  
413 8th AVE. - WILM., DE

FULL LINE VENDING

FREE SURVEY — PROFIT SHARING

## Welcome To DELAWARE MISTER KLEEN, INC.

Coin Laundry and Dry Cleaning Centers

Midway Shopping  
Center

998-7855

Chestnut Run  
Shopping  
Center

998-7577

Sylvan Taub, President

Graylyn Crest  
Shopping Center

478-7950

# Restaurant Guide



## Alexander's Seafare

"Always the FRESHEST & FINEST seafood."

Fish • Shrimp • Crabmeat • Lobster  
Scallops • Oysters • Clams

Homemade Seafood Platters  
Sandwiches • Salads • Soups

Eat in or take out

Branmar Plaza — Marsh & Silverside Rds.  
Wilmington, DE  
475-FISH • 475-7000

漢 RATED DELAWARE'S #1 宮  
CHINESE RESTAURANT

## Imperial Inn

The finest Chinese Food  
only the FRESHEST beef, seafood, poultry  
and vegetables used!

OPEN 7 DAYS: Mon.-Thurs. & Sun. 11:30-10,  
Fri. & Sat. to 11

In House Dining or Take Out  
478-7600 or 478-9834

(Corner of Rt. 202 & Silverside Rd., Talleyville) - 4015 Concord Pike, Wilmington

10% DISCOUNT On Any Order  
In House or Take Out With This Ad  
Not Good With Other Promotion - Expires 11/30/88



## RESTAURANT AND DELI

Business Person Breakfast  
Meeting

Special!

In Our Branmar Store Only

Juice  
Nova, Eggs & Onions  
Bagel & Cream Cheese  
Home Fries  
Mini Danish & Coffee

\$5.95

Per Person

Reservations Only Group of 4 Or More Monday-Friday 7-11 AM

Buy 1 Dinner Get 2nd Dinner  
of Equal Value or Less

At  
**1/2 PRICE**  
EAT-IN OR TAKE OUT

Mon.-Sat. 5-9 PM

\*BEVERAGES NOT INCLUDED/NO OTHER SPECIALS APPLY

Please no credit cards with coupon

VALID MONDAY THRU SATURDAY ONLY  
NOW THRU NOV. 30, 1988 WITH THIS COUPON  
ONE COUPON PER CHECK

Coupon Good For Our Naaman's Rd. Store Only

Serving In Both Locations:

1710 Naamans Rd.  
Wilm., De  
475-5820

Branmar  
Plaza  
475-4900

## Modern Kosher Meats & Poultry

LET US CATER YOUR  
THANKSGIVING DAY  
DINNER

Cooked Turkey w/gravy, Candied Sweet  
Potatoes, Scrumptious Vegetables, Fresh Stuff-  
ing, Desserts on Request.

ALL THIS IS YOURS FOR A  
TELEPHONE CALL TO

475-9300

Limited Amount of Orders Taken

1708 NAAMANS ROAD - WILMINGTON, DEL. 19810

## PEARL EAST

CHINESE RESTAURANT

明 Chinese Restaurant 珠  
Cocktail Lounge



Our chef & manager bring their  
experience & style from  
the Golden Nugget  
Casino to Delaware.  
Come and experience  
the atmosphere  
& gourmet  
cuisine.

Canby Park Shopping Center  
Route 4, Maryland Ave.  
Wilmington, Del. 19805

Tel: (302) 655-3003  
655-3004

Bon  
Appetit

GOURMET FOOD SHOPPE

GOURMET-TO-GO

Try Our Freshmade Hot  
Soups, Baked Brie & Quiches

- Caviar
- French Pates
- Asstd. Salads • Cheese
- Smoked Products
- Breads • Croissants
- Coffee
- Special Cakes
- Gift Baskets
- CATERING

Complete Eat-In  
and Take-Out  
Menu

Talleyville  
Shopping Center  
3629-D Silverside Road  
Wilmington, DE 19810-5101  
(302) 478-4344

**alfred carlis**  
 "the nicest children's shop in town"  
 All Charge Cards Accepted  
 111 West 9th St., Wilm.  
 656-7069



TELEPHONE  
 DEL. (302) 478-3727  
 PA. (215) 724-5772

**GUS REISSMAN & BRO. CO.**  
 Insurance

4 THE COMMONS  
 3510 SILVERSIDE ROAD  
 WILMINGTON, DELAWARE 19810

ASHER RUBIN

"WE SELL THE BEST AND REPAIR THE REST"

**HENRY'S BICYCLE SHOP** SINCE 1946

MECHANIC ALWAYS ON DUTY

\$5.00 off with this ad  
 Any purchase over \$50.00

2901 Lancaster Ave.  
 654-0361 • 571-0517

The Jewish Community would like to help make your move to Delaware as easy and pleasant as possible. For information or help, call **The Jewish Federation at 478-6200**

**Herman's Quality Meat Shoppe, Inc.**  
 64 East Cleveland Avenue Newark, Delaware 19711  
 Telephone 302-731-5344

Monday Thru Thursday 9:00 to 5:30 Friday 9:00 to 7:00, Saturday 9:00 to 5:00

**Tailored Fit**  
 a shopping service tailored to fit your every need

Shopping for personal needs, gifts, home furnishings  
 Creative wrapping  
 Local delivery and mailing

Debbie Heck 478-1011 Colleen Shivone 656-3601

**Think IGA** INDEPENDENTLY OWNED SUPERMARKETS

**BRANDYWINE**  
 4609 N. MARKET ST., WILMINGTON, DE 764-7861

STORE HOURS: Monday - Saturday 8 AM to 9 PM; Sunday 9 AM to 6 PM

CHECK CASHING SERVICE! PHOTO DEVELOPING AVAILABLE 5% SENIOR CITIZENS DISCOUNT TUES. & WED.

WE ACCEPT VISA, MASTERCARD & WFS PLAN

Lindell Square - Suite 2  
 1601 Milltown Road  
 Wilmington, DE 19808

Hours by Appointment  
 Days and Evenings

**LP**

**Lindell Physical Therapy**  
 Jay S. Kogon, R.P.T., A.T.C.

Comprehensive Physical Therapy

- Orthopedic Rehabilitation
- Sports Injury Treatment and Prevention

(302)998-7572

**FOR QUALITY FRAMING AT A PRICE YOU'LL LIKE**

**frame maker** FOUND ONLY AT **HOME BUDGET CENTER**

Custom Framing or Do-It-Yourself  
 10-9 Daily / 10-6 Saturday

4416 Kirkwood Hwy.  
 Opposite Bradlees/Pathmark  
 302-999-9968

**CALL US FIRST!**  
**HAPPY HARRY'S HOME HEALTH CARE CENTER**

24 HOUR EMERGENCY SERVICE (302) 654-3019

**IN-HOME EQUIPMENT PROGRAMS**

- RESPIRATORY
- REHABILITATION AIDS
- DIABETES MONITORING
- PAIN CONTROL DEVICES
- OSTOMY SUPPLIES
- ORTHOTICS • HOSE

—PLUS—  
 COMPLETE ENTERAL AND I.V. SYSTEMS WHICH INCLUDE CHEMO AND ANTIBIOTIC THERAPY

Phone (302) 654-3019

- FREE IN-HOME EVALUATION
- FREE DELIVERY AND SET-UP
- WE BILL MEDICARE AND ALL MAJOR INSURANCE COMPANIES

HOME HEALTH CARE SERVICE

EVERYTHING FOR YOUR 16-A TROLLEY SQUARE  
 ALSO AVAILABLE AT ALL HAPPY HARRY DISCOUNT DRUG STORES!

FAMILY'S GOOD HEALTH  
 WILMINGTON, DE 19806

# Holocaust Monuments In Wilmington



The Garden of the Righteous Gentiles (above), located in front of the Jewish Community Center in Wilmington, is the first monument in the United States to Christians who saved the lives of Jews during the Holocaust in Europe. The Garden's original trees were dedicated in November 1981 by Holocaust survivors residing in Delaware. Individual bronze plaques at the trees bear the names of rescuers, nine of whom saved Jews who later came to live in Delaware; one Christian couple, Ger and Gerard Van Raan, honored in the Garden for their heroic efforts in Holland, also came to reside in Delaware. The Garden was inspired by an "Avenue of the Righteous" at Yad Vashem, the Holocaust museum and resource center in Jerusalem.

At the entrance to the Jewish Community Center, stands the monument to the children who survived the Holocaust (left). The bronze monument, a pair of figures from a larger work of 12 figures called "Kaddish," is the work of an Israeli artist. The statues were purchased by the Halina Wind Preston Holocaust Education Committee of the Jewish Federation of Delaware. An accompanying plaque reads: "In memory of the more than one million Jewish children who perished during the Holocaust, 1933-1945."

In Freedom Plaza in downtown Wilmington stands the Holocaust Memorial of Delaware (right). The sculpture is comprised of three 15-foot, irregularly-shaped, concrete columns, on which are etched the names of several of the concentration camps. The columns are compressed against three bronze figures: a man, a woman and a mother and child, representing the victims of the Holocaust. The massive impersonal forces of the columns suggest man's inhumanity to man and the cold cruel barbaric mentality of the Nazis in an unmoving world. The figure of the mother holding a child over her head may also represent the end of a nightmare and the beginning of a new life. Freedom Plaza is located in the 800 block of French Street (between 8th and 9th Streets) in Wilmington.

Don't Let Just Anyone  
Monkey with Your Sign

CALL A TUPP PROFESSIONAL



Half the brothers-in-law and some of the handymen in the Delaware Valley claim they can fix or maintain your sign. Don't you believe it. Every year for the past 58 years, we've had to fix the handy work of some jack-of-all-trades. It always ends up costing the owner more time and money than if he would have called us first.

**TUPP  
SIGNS**

Call 322-1600

457 E. New Churchman's Rd.  
New Castle, DE 19720

Please support our advertisers.  
List your home with Patterson-Schwartz Real Estate.

Brandywine 475-0800, Greenville 429-4500, Hockessin 239-3000, Hotel duPont 656-3141,  
Limestone 239-9030, Mill Creek 999-0251, Newark 733-7000, Wilmington 656-3141

Please  
Support Our Advertisers



**Thriftway**

Graylyn Crest Center  
1718 MARSH ROAD  
WILMINGTON, DEL. 19803  
STORE HOURS: Sunday 8 AM-6 PM  
Mon.-Sat. 8 AM-9 PM



Film Printing & Developing

Kodak Film AT LOWEST SUPERMARKET PRICES			
110-12 EXP	\$2.19	126-12 EXP.	\$2.39
110-24 EXP	\$2.79	126-24 EXP.	\$2.99
Disc Film-15 Exp	\$2.59	CP 135-C24 EXP.	\$2.89
Disc Film-30 Exp	\$4.89	CM/135 C24	\$3.59

Single Prints!		2 Prints of Every Picture!	
12 EXPOSURES	\$1.69	12 EXPOSURES	\$2.53
15 EXPOSURE DISC	\$2.09	15 EXPOSURE DISC	\$3.14
24 EXPOSURES	\$2.99	24 EXPOSURES	\$4.67
36 EXPOSURES	\$4.79	36 EXPOSURES	\$7.31

C110, 135 DISC, C-41 PROCESS  
\*OTHER SERVICES AVAILABLE  
ASK FOR INFORMATION

Guaranteed  
Color Print Developing

24 HOUR SERVICE... 7 DAYS A WEEK... SEE STORE FOR DETAILS

# SAVINGS FROM HARRIS JEWELERS

SEE OUR LARGE SELECTION OF 14K GOLD CHAINS AT SAVINGS FROM 40 TO 60 PERCENT

SEE OUR LARGE SELECTION OF "RAINBOW" JEWELRY AT DISCOUNT PRICES



DISCOUNT PRICE ON  
LLADRO FIGURINES  
LENOX CHINA  
WATERFORD CRYSTAL

**SAVE 60%**  
on 14K GOLD BANGLE BRACELETS

	LIST	OUR PRICE
1/16"	\$112.50	\$44.98
3/16"	\$212.50	\$84.98
4/16"	\$350.00	\$139.98
5/16"	\$437.50	\$174.98
7/16"	\$575.00	\$229.98
9/16"	\$800.00	\$319.98

SEE OUR LARGE SELECTION OF TENNIS BRACELETS AT DISCOUNT PRICES

## HARRIS JEWELERS

309 Branmar Plaza  
1812 Marsh Road  
Wilmington, DE 19810  
Phone: 475-3101

4377 Kirkwood Hwy.  
Almart Plaza  
Wilmington, DE 19808  
Phone: 999-9901

Market Street Mall  
824 Market St.  
Wilmington, DE 19801  
Phone: 655-6253

# Bagels & Donuts inc.

ALL PRODUCTS ARE FRESH-BAKED ON PREMISES EVERY MORNING. 7 DAYS A WEEK.  
Under The Supervision Of Vasdha Kashrut For Baked Take-Out Goods Only!



**FEATURING:**

- HEARTH BAKED JEWISH RYE
- PUMPERNICKEL BREAD
- CHALLA
- NUTRITIOUS WHOLE WHEAT & OLD-FASHIONED WHITE BREAD
- DELICIOUS CINNAMON BUNS

17 VARIETIES OF NEW YORK STYLE BAGELS

*"Best Bagels..."*

Delaware Today Magazine  
1985, 1986, 1987 & 1988

MINI-BAGELS - PERFECT FOR WEIGHT WATCHERS, KIDS, SNACKS, PARTIES OR ANY TIME.

<p>COUPON</p> <p><b>50¢ Off</b> Any Breakfast Special <small>Limit One Breakfast Special Good Thru 12-31-88</small></p>	<p>COUPON</p> <p><b>\$1.00 Off</b> Doz. Bagels at Reg. Price <small>Limit One Dozen Good Thru 12-31-88</small></p>	<p>COUPON</p> <p><b>50¢ Off</b> Any Large Loaf of Bread <small>Limit One Loaf Good Thru 12-31-88</small></p>
---	--	--

TWO LOCATIONS TO SERVE YOU

SILVERSIDE & MARSH RD.  
478-9016

1901 PENNA. AVE.  
652-7960

# Know someone heading for Delaware? Give them a head start.



If you know someone who's moving to Delaware, you can help make their move a lot easier. Just contact me, Alice Kelley, at Bank of Delaware's Newcomer's Service. I'll be happy to help them get acquainted with our state and send them a free copy of this "Welcome to Delaware" kit.

It's a very useful collection of facts and information about housing, schools, taxes, restaurants, shopping centers, banking services, and much more.

So just contact me at 302-429-1522, send the coupon below, or come into the office at 222 Delaware Avenue. I'll take care of the rest.

Please send your "Welcome to Delaware" kit to:

Name \_\_\_\_\_  
 Address \_\_\_\_\_  
 City \_\_\_\_\_ State \_\_\_\_\_ Zip \_\_\_\_\_  
 Phone \_\_\_\_\_  
 Date of Arrival \_\_\_\_\_

Mail to: Mrs. Alice Kelley/Newcomer Department  
 Bank of Delaware  
 222 Delaware Avenue, 15th Floor  
 Wilmington, DE 19801

**BANK OF DELAWARE**<sup>SM</sup>  
 Delaware's Bank

JV

Member FDIC



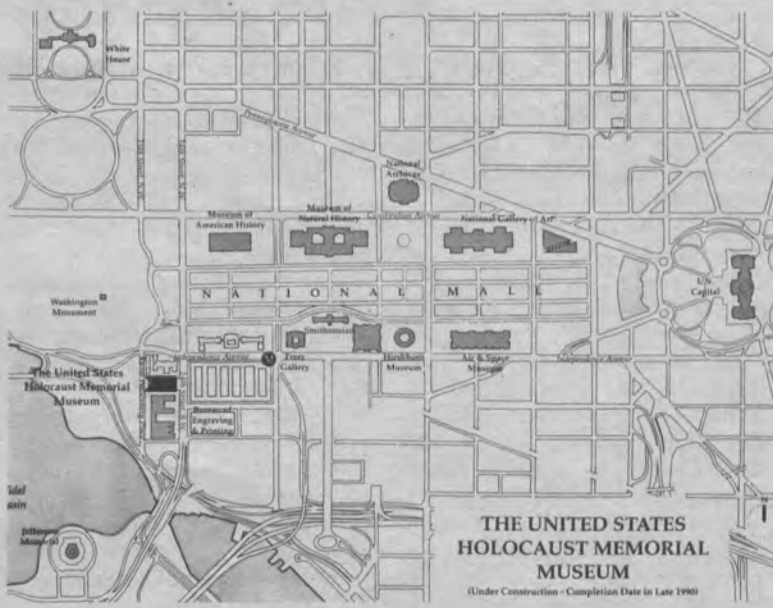
# Holocaust Museum's Cornerstone Dedicated

WASHINGTON, D.C. — President Reagan delivered the keynote address at ceremonies dedicating the cornerstone of the United States Holocaust Memorial Museum on Wednesday, October 5. As Honorary Chairman of the Museum's fundraising campaign since 1984, the President has given full support to building this unique national institution.

The ceremony will take place at the Museum site on Raoul Wallenberg Place (formerly 15th Street, S.W.), south of Independence Avenue and overlooking the National Mall. The Museum was designed by James I. Freed, of I.M. Pei and Partners, New York. The cornerstone, unveiled by President Reagan, is a granite stone inscribed with the date of the dedication. It will be placed at the west entrance of the Museum.

Participating in the ceremonies with the President were Harvey M. Meyerhoff, Chairman of the U.S. Holocaust Memorial Council, William J. Lowenberg, Vice Chairman of the Council and a survivor of the Holocaust, and Leon Bass, a liberating soldier with the American Army.

With completion of the building planned for late 1990, the Museum will reflect the commitment of the American people to learn from the Holocaust. The Museum will be the preeminent Holocaust institution in the nation and will include a permanent exhibition describing and illustrating major events of the Holocaust, a memorial Hall of Remembrance, an archive, a library and an education center.



A Children's Wall on the Concourse level will use approximately 6,000 tiles hand-painted by American school children at the exhibit entitled "Remember The Children" which has been extended indefinitely at the Capitol Children's Museum. These tiles depict their thoughts and feelings about the Holocaust. The wall will be a memorial to the more than one million children murdered by the Nazis.

The Museum's permanent exhibition will tell the full story of the Holocaust. It will begin in 1933 with the events leading up to the Holocaust. It will also deal with the aftermath, the impact of the Holocaust on philosophy and theology as well as the achievements of survivors.

The library's computerized retrieval system will enable the Museum to become the central

educational resource for Holocaust scholars and students nationally and worldwide.

In 1980 Congress established the U.S. Holocaust Memorial Council to help foster the remembrance of the six million Jews and millions of others, including Gypsies, political dissidents, homosexuals and Jehovah's Witnesses, who were murdered by the Nazis during one of the darkest periods in human history.

The Council's 55 members, appointed by the President, along with five U.S. Senators and five members of the House of Representatives, are charged with sponsoring and encouraging annual Days of Remembrance events throughout the nation for the victims of the Holocaust, and planning, raising funds for and constructing the United States Holocaust Memorial Museum.

For this purpose the U.S. government, has given the Council 1.7 acres of federal land stretching from Raoul Wallenberg Place to 14th Street, S.W. and flanked by the Bureau of Engraving and Printing.

As mandated by law, the funds to build the Museum and support its programs will come totally from private sources.

Already more than \$50 million of the \$147 million needed has been raised through "A Campaign to Remember." The building and grounds will cost an estimated \$60 million, and \$30 million will be for exhibitions, a computer system and other expenses for the Museum interior. The remaining funds raised will be for an endowment.

## Holocaust Remembered By President Reagan

President Ronald Reagan commemorated the six million Jews killed in the Holocaust, saying that their "monstrous end will testify to the hellish depths of human evil." He spoke at last week's ceremony for the new Holocaust Memorial Museum in Washington.

"We know that the United Nations, whose peacekeepers were honored ... for their service to the world, has yet to repeal its infamous resolution equating Zionism with racism. We know where such intellectual infamy can lead."

Reagan denounced those who claim the Holocaust did not happen, including "our own countrymen" dedicated "to the disgusting task of minimizing or even denying ... the Holocaust. This act of intellectual genocide must not go unchallenged, and those who advance these views must be held up to the scorn and wrath of all good and thinking people in this

nation and across the world," Reagan said.

He called The Protocols of the Elders of Zion, still taught in some schools in the Arab Middle East, "the most profoundly cynical piece of anti-Semitic filth produced, full of libels toward the Jewish people, particularly the horrifying 'blood libel.'"

Reagan spoke of the "subtler forms" of anti-Semitism present in today's society, that "seeks to deny Jews their independent identity," including 75,000 Jews in the Soviet Union seeking to emigrate. Glasnost has provided "liberalizing attitudes toward Judaism in the Soviet Union" but Jews need courage to say, "Yes, I am a Jew, I wish to study Hebrew, and I wish to emigrate to the homeland of my people."

"Where are those exit visas?" Reagan asked Soviet leaders. "Let these people go," he added.



The Hall of Witness serves as the United States Holocaust Memorial Museum's central gathering place. Through it visitors pass to all parts of the building. At the west end of the Hall of Witness is a wall of black slate with a deep symbolic crack. The monumental staircase at right leads to the Museum's memorial — the Hall of Remembrance. Gated portals, right, lead to changing exhibition galleries. The materials and architectural elements of the Hall of Witness allude to the Holocaust and become part of the experience depicted in the Museum's exhibitions. James Ingo Freed of I.M. Pei and Partners, the Museum's architect, says, "I want each visitor to be stirred." Preliminary construction is underway and completion is scheduled for 1990.

## Centreville Frame & Antique Shop

The Centreville Frame & Antique Shop cordially invites you to our November showing of rare original, hand colored lithographs and engravings dating from the 17th century through the late 19th century.

Featured are these new acquisitions:

- The complete Seligmann edition of the Catesby & Edwards birds of Carolina, Florida and the Bahama Islands, c. 1755.
- Octavo size British birds by F.O. Morris, c. 1870.
- La Peniture Decorative architecturals, c. 1880.
- Edwin Forbes etchings of the Civil War, c. 1876.
- The Loddiges Botanical Cabinet by George Cooke, c. 1828.
- The folio birds of John Gould and Joseph Wolf, c. 1860.
- Many more antique botanical, architectural and historical works of art. Shop hours 10:00 a.m.-4:30 p.m. Mon. thru Sat.

Place: The Centreville Frame & Antique Shop  
 Fredericks Country Center  
 5716 Kennett Pike  
 Centreville, Delaware  
 For additional information, call (302) 652-3007

### Kutz Home Auxiliary Hanukkah Bazaar

- Raffle • Refreshments
- Bake Sale
- Sale of Residents' Handiwork

Dedication of Lobby

Place: Milton & Hattie Kutz Home

Date: November 6, 1988

Time: 1:00-4:00

Please Support Our Advertisers

## Obituaries

tober 10 of cardiorespiratory failure in Wilmington Hospital.

Mr. Stellenberg operated Harry's Sub Shop at Second and Tatnall streets for 42 years. He retired in 1969.

He was a member of Congregation Beth Shalom and Wilmington chapter of Deborah.

He is survived by his wife, Selma; two sons, Jay A. of Wilmington and Raymond M. of Hockessin; two brothers, Herman Sterenberg of Philadelphia and Samuel Steinberg of Claymont; two sisters, Freda Greenbert and Libby Sirisky, both of Florida; and five grandchildren.

Instead of flowers, the family suggest contributions to the Wilmington chapter of Deborah.

**Harriet Sylvia Wasserman**  
Harriet Sylvia Wasserman, 70, formerly of Wilmington, Del., died October 17 of heart failure in Oakbrook Convalescent Home, Summerville, S.C.

Mrs. Wasserman was a homemaker.

She was a philatelist and a member of the Doll Exchange Club.

She is survived by her husband, Morris; a son, Larry of Palm Beach Gardens, Fla.; a daughter, Sandra Adams of Charleston; a sister, Anne Anderson of Wilmington Manor Gardens, New Castle, Del.; eight grandchildren and a great-grandchild.

Instead of flowers, the family suggests contributions to the American Heart Association, Wilmington.

## Polls Show Israeli Voters Are Moving To The Right

Tel Aviv (JTA) — Although 23.4 percent of the Israeli electorate is still undecided, a recent poll shows that voters are moving to the right.

The results of 30 polls published in May, July and September were analyzed in the daily *Hadashot*, along with the newspaper's own poll. *Hadashot* made the disclaimer that its survey's methods were not statistically precise.

Support for the Labor Party stood at 31.4 percent in September, compared with 31.8 percent in May. Likud was favored by 34.2 percent of the voters in September, down from 34.9 percent in July and 36.3 percent in May.

While the gap between the two major parties is small, the most recent polls indicate that

Likud and the parties likely to join a Likud-led coalition would receive 57.3 percent of the vote, compared with 44.9 percent for Labor and its potential allies.

On the right wing of the political spectrum, the most significant gain was by Rabbi Meir Kahane's extremist Kach party, which was supported by 5.4 percent of voters in September, after dropping to 3.9 percent in July. In May, Kach polled 4.4 percent.

*Maariv* published a survey conducted by the Israeli Institute for Military Studies, which showed that 74 percent of students at vocational and religious schools hate Arabs, compared with only 12 percent of high school students.



**Harry L. Stellenberg**

Harry L. Stellenberg, 84, of Electra Arms Apartments, 18th and Broom streets, died Oc-

## Local Teacher Among Those Attending Seminar On Holocaust

NEW YORK — Forty-five Jewish and non-Jewish high school teachers from 18 states and the District of Columbia participated in a three-week course in Israel on teaching the Holocaust and Jewish resistance to the Nazis. Among them is Joel Glazier who teaches at Gunning Bedford Middle School in Delaware City.

Launched in 1985 as a pilot

program with 30 participants from the New York metropolitan area, the project is now an annual event and includes teachers from all parts of the country, according to Vladka Meed. Mrs. Meed initiated the course as program coordinator for the American Gathering/Federation of Jewish Holocaust Survivors, one of the sponsoring organizations. The other spon-

sors are the American Federation of Teachers, Ghetto Fighters House in Israel, Yad Vashem, Haifa University and the Educator's Chapter of the Jewish Labor Committee.

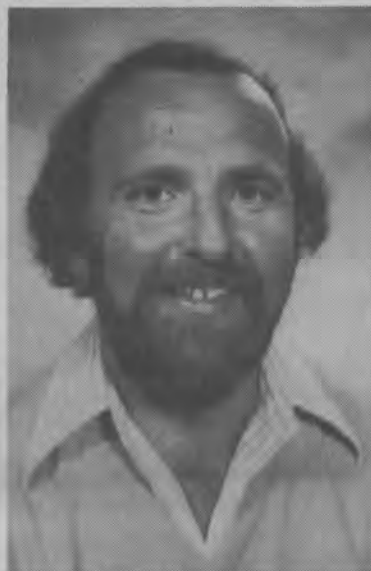
Scholarships for the 45 teachers were provided by the American Gathering.

The Holocaust curriculum covers the background, events, methods and aftermath of the systematic destruction of European Jewry and includes material on Jewish spiritual and physical resistance to the Nazis. It is the hope of the sponsors that the teachers will use their new-found knowledge, and the materials they will have gathered, in the history, social studies, English, and other courses they teach.

"This year's participants, like those of the last three years, experienced history in and out of the classroom," said Mrs. Meed, who is the author of "On Both Sides of the Wall," an account of her experiences in the Warsaw Ghetto.

She added; "In Israel, the teachers learned of despair, resistance, hope and redemption. They also saw a new Jewish life and the daily struggle for security and survival and hope for peace. By developing curricula to teach and pass on their new understanding to their students, they will contribute to the prevention of future catastrophes — against any people anywhere."

Classes were held five days a week, mostly at the Ghetto Fighters House, a documentation and study center that also houses Israel's Museum of Holocaust and Resistance. It is located on Kibbutz Lochamaei Ha-Ghetta'ot, 10 miles north of Haifa, founded by former partisans and survivors of Nazi



Joel Glazier, a history teacher at Gunning Bedford Middle School in Delaware City, was among 45 Jewish and non-Jewish high school teachers from 18 states who participated in a three-week course in Israel on teaching the Holocaust and Jewish resistance to the Nazis.

ghettos and concentration camps. The seminar curriculum drew upon the personal experiences of Holocaust survivors, ghetto fighters and par-

tisans who have made their home in the State of Israel, as well as on the resources of the museum.

Classes were also conducted at Yad Vashem in Jerusalem, Israel's Holocaust memorial, and at Haifa University. Participants visited Masada and many other historic sites.

On completing the course, the teachers were invited to join an alumni group, formed on the return of the first group of teachers in 1985, that enables graduates to exchange experiences and share ideas on teaching about the Holocaust. Program graduates receive four credits from Haifa University on completing the course and submitting a term paper.

This year's participants teach at secondary schools in Arizona, California, Connecticut, Delaware, Illinois, Maryland, Minnesota, New Jersey, New York, Ohio, Pennsylvania, Tennessee, Texas, Utah, Vermont and Washington, D.C. On the completion of this year's seminar, program graduates will be reaching over 30,000 students in classrooms across the country.

## Nuclear Power Plant Planned For 21st Century

JERUSALEM (JTA)—Israel's electric corporation will operate a nuclear power plant by the beginning of the next century, and at least 80 percent of its components will be manufactured in Israel, Energy Minister Moshe Shahal told reporters on October 13.

Israel is one of the world pioneers in developing the next generation of nuclear reactors, Shahal said, and that Israel's nuclear power stations will con-

sume locally produced uranium. Two government companies, Israel Electric Corp. and Israel Chemicals, as well as the local coal company, reached agreement to establish a uranium and phosphates plant on the Rotem plateau in the Negev.

It is expected to start production in two years. It will sell its processed uranium abroad until the first nuclear power plants open in Israel.

## Neo-Nazis Recruiting Swiss

GENEVA (JTA) — A group of German neo-Nazis is trying to recruit likeminded persons in Switzerland. According to a Swiss radio report, their initial target is Germans living in Switzerland. Letters have been sent to hundreds, asking them to join the movement.

So far, the only serious Swiss neo-Nazi organization is based in Lausanne. It is headed by Francois Genoud, a banker. The Swiss authorities say they can take no action against it, because Switzerland has no laws specifically prohibiting racist activities.

### Schoenberg Memorial Chapels



In the hollowed tradition of our faith....

a dignified setting with reverence for customs and observances in strict accord with family wishes.

519 Philadelphia Pike  
762-0334

COMPLETE INSURANCE COVERAGE! UNDERWRITING FACILITIES FOR FIRE • CASUALTY • AUTO • MARINE • SURETY BONDS • SPECIALISTS FOR UNUSUAL RISKS



HARRY DAVID ZUTZ, INSURANCE  
300 DELAWARE AVENUE  
P. O. BOX 2287  
WILMINGTON, DE 19899  
658-8000

COMPREHENSIVE COVERAGE FOR ATTORNEYS, PHYSICIANS, DENTISTS, ARCHITECTS, ENGINEERS, REALTORS, NURSES, PHARMACISTS, AND OTHER PROFESSIONAL DISCIPLINES

Professional Liability Insurance, Inc.



## For Nursing Care in Your Home

# RELY ON US!



Medical Personnel Pool

MEDICAL PERSONNEL POOL® MPP™ provides experienced home health care professionals — from live-in companions to Registered Nurses.

Call us 7 days a week, 24 hours a day, for home health care you can rely on.

995-6696

2055 Limestone Rd.  
Suite 213  
Wilmington, DE 19808

# Jewish Family Service of Delaware

Jewish Family Service is a constituent agency of the Jewish Federation of Delaware and a member agency of the United Way of Delaware.



## Domestic Violence

By ARNOLD LIEBERMAN

In the last issue, I discussed Mental Illness Awareness Week. The month of October has also been designated as Domestic Violence Awareness Month. These two related areas are both of great concern to us at JFS.

Since our major goal is to stabilize and improve family relationships, violence is obviously the antithesis of what we are trying to achieve. Although violence continues in some cases over an extended period, it often signifies the break up of the marriage and the family, or if the marriage does survive, the damage is probably irreparable.

Reality dictates that this problem must be approached from the perspective of stricter law enforcement, more severe punishment, and more resources for victims. The violence has occurred and will continue to occur at least for some time to come.

We can be helpful to people who are involved in domestic violence by providing therapy, giving information, and linking people to available resources. However, we would much prefer to have an impact in the area of prevention of violence rather than treating its aftermath. Nowhere is our adage, "it pays to face a problem and get help before it gets out of

hand" more appropriate than in this area.

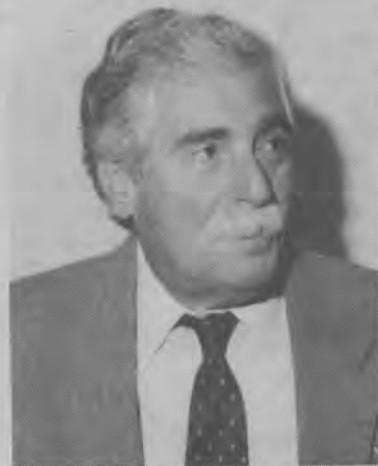
When violence occurs, either or both of the people involved, as well as the relationship, must be having problems. There are no situations where these problems could not be resolved short of violence, given the proper motivation and intervention.

Our efforts at JFS continue to be geared toward the earliest possible intervention. We advocate that people have nothing to lose. If the problem can be worked out, it is certainly advantageous. If it cannot be

resolved, it is better to be aware of that as soon as possible.

There is no way that marital counseling can make a marriage worse. The counseling can only help the clients to develop a more realistic view and better understanding of their situation. What they choose to do about it is up to them.

Our goal is to help families and violence can only hurt families. If your family needs help, call Jewish Family Service at 478-9411.



By ARNOLD LIEBERMAN  
Executive Director  
Jewish Family Service

## Congress Approves Foreign Aid, Passes Bill On Iraqi Sanctions

The Senate has approved the Foreign Aid Appropriations conference report by voice vote, thus completing the first separate foreign aid bill to be signed into law in seven years. The House had previously approved the report 327-92.

The \$14.3 billion bill includes \$3 billion in all-grant aid to Israel as well as numerous other pro-Israel provisions.

In a related matter, the House passed its Iraqi sanctions bill 388-16.

The Senate passed a much stronger version a few weeks ago. The Senate bill would have cut off all U.S. economic and military assistance to Iraq; prevented the import of Iraqi petroleum products into the United States; obligated U.S. representatives to veto all foreign loans to Iraq; and prohibited the sale to Iraq of all U.S. products which are subject to export control. These sanctions would have remained in effect until Iraq ceases murdering its Kurdish population and halts its use of chemical weapons.

An identical bill was introduced in the House but was

modified by the House Foreign Affairs Committee to reflect some Reagan Administration objections.

Tom Lantos (D-Calif.) criticized the administration's opposition to sanctions saying, "I am intrigued by the unique emphasis on the future instead of the past. If there is no doubt poison has been used... we should concentrate on the recent deaths — not on eight months from now, for which we have no guarantees."

The House bill prohibits government and commercial arms sales to Iraq, as well as dual-use items that are on the commodity control list. It also prohibits the sale to Iraq of any chemical which may be used in the production of chemical weapons and prohibits the export of goods and technology that would significantly add to Iraq's military potential.

The bill also gives the President the power to apply appropriate additional sanctions, including those in the Senate bill.

The Iraqi sanctions bill now goes to a conference committee where the differences will

be worked out.

In other matters, 51 Senators sent a letter to Secretary of State George Shultz urging him to deny PLO Chairman Yasir Arafat a visa should he request one. It has been reported that Arafat is considering requesting a U.S. visa to address the General Assembly of the United Nations.

The letter states: "The United States confers no diplomatic immunity on the PLO or its United Nations 'Observer Mission.' We must continue our policy of denying admission to our country those, including Arafat, who profess terrorism as a tool of foreign policy."

The Senators also insist that before Arafat is admitted into the United States, Arafat and the PLO must formally recognize Israel's right to exist, accept U.N. Resolutions 242 and 338, and eliminate from the PLO charter the call for the destruction of Israel. Senator Bill Roth was one of the signers.

(An identical letter is currently circulating in the House.)

## Activists Erect Holocaust Memorial

VILNIUS, Soviet Union (JTA) — Activists Grigory Alpernas and Georgy Belitsky recently commemorated the 47th anniversary of the Nazis' promulgation of anti-Jewish laws by erecting a temporary marker outside the home of the Vilna Gaon, according to the National Conference on Soviet Jewry.

Alpernas and Belitsky had placed ads in the local press announcing the commemoration, estimating that only several dozen Jews would show up. But some 500 Jews and non-Jews joined them in the commemoration.

Their original request for the memorial was denied, but with the help of the Free Lithuanian Movement, they were granted the temporary marker, which includes inscriptions in Yiddish and Russian, but not Hebrew.

Vilnius refuseniks at the commemoration gave the activists photographs of wood carvings, sculpted according to folkloric tradition by an artist known as

Bunka, which have been placed at sites of Nazi massacres of Jews.

The commemoration prompted one young Vilna resident to write a letter published in Komyaunimu Tiesa, and reprinted in Sovetskaya Molodyozh. It said: "It is strange and awkward to write a letter with a request to mark the location of a ghetto, and to erect a monument to those killed. Do we really have to ask for such things?"

The letter continued that the

younger generation of Lithuanians have not been taught that Vilnius had once been a world-renowned center of Jewish culture, or that a Jewish Ghetto had existed there.

While there were no incidents during the commemoration, which was permitted by the authorities but not granted their protection, the marker was removed. Alpernas and Belitsky later found it and re-erected the marker in front of local media.

## Shamir And Peres Debate

By CATHRINE GERSON  
JERUSALEM (JTA) — Premier Yitzhak Shamir and Foreign Minister Shimon Peres, the two candidates for prime minister, will meet face to face in a television debate on Oct. 23, nine days before the Knesset election.

Nissim Mishal, Israel Television's Washington correspon-

dent, has been named moderator, but he must be confirmed by the chairman of the Israel Broadcast Authority, Uri Porath, and by Justice Eliezer Goldberg, chairman of the Central Election Committee.

The debate will last 30 minutes. A drawing will decide which candidate answers the first and last questions.

## Dear Rachel,

Recent items in the news have brought to light the fact that many people still think that doctors are God's gift to humankind. Those of us who are family know that they are people just like everyone else. As someone who has been told by many busybodies "how lucky I am," let me set the record straight about what it is like to be married to one of those proverbial Jewish doctors.

He leaves early and comes back late. When he is home, he is exhausted and grouchy. He expects the entire household to revolve around his needs. Mealtimes, family times, and socializing, when he is there, are subject to the tyranny of the phone and beeper. He is used to being the final authority on everything. He "listens" to me or the kids, and then ends every discussion by restating his original position as the final conclusion. Naturally, I run a single parent household. I am responsible for everything in this family except making a living: leaking faucets, everyone's emotional and physical health, education, and the social side of a rising young doctor's career.

Being Mrs. Maimonides ain't all it's cracked up to be.

Mrs. Maimonides  
Dear Mrs. Maimonides,  
Like Tevye in "Fiddler on the Roof," lots of us occupy our

spare moments with daydreams about how a little bit of wealth would solve our problems. Thus the busybodies feel that you should have nothing to complain about. Rich or poor, however, relationships take work. Your marriage needs some work if you are going to enjoy it.

Your husband launched three careers in a relatively short time: doctor, husband, and father. Like most men in their thirties, he sees professional success and provider as his primary roles. The kids often come second, and the marriage as a distant third. You are unlikely to convince him to reorder his priorities completely. Nevertheless, you do need to find a way to get him to really listen to your concerns and feelings. Your love for him and your family may come across as just another demand upon his limited time. You may need to see a counselor, both to impress upon him the seriousness of the problem, and to explore some very practical ways of managing his time in all three of his careers. It's worth the effort!

Rachel  
Send letters to "Rachel, c/o Jewish Family Service, 101 Garden of Eden Rd., Wilmington, DE 19803." Names and details will be altered in published letters to protect your privacy.

## King: Work Together

WASHINGTON (JTA) — The need for blacks and Jews to continue working together, as they did during the 1960s civil rights struggle, was stressed at a Capitol Hill luncheon on October 6.

"We can no longer afford the luxury of divisiveness," Don King, the boxing promoter, stressed at the B'nai B'rith International-Don King Center for Black Jewish Relations awards ceremony.

The center presented its first Martin Luther King-Abraham Joshua Heschel Award to Arthur Goldberg, a former associate justice of the U.S. Supreme Court and Rep. John Lewis (D-Ga.), who was chairman of the Student Nonviolent Coordinating Committee in the 1960s.

King, who last April con-

tributed \$75,000 to initiate the center for black-Jewish relations, stressed that Jews and Blacks have both suffered injustice and "we can come together in unity and respect."

Thomas Neumann, executive vice president of B'nai B'rith International, noted that within one week a synagogue, including five Torah scrolls was set on fire and the Mississippi home of Rep. Mike Espy (D-Miss.), a black, was defaced by racially-motivated vandalism.

The two incidents "had one thread in common — prejudice, hatred," Neumann said. "We can suffer and survive the differences between communities, but we can't suffer and survive if we don't get together to fight the common problem."

## Announcements/Events

### NASA Scientist To Speak At Chabad Dinner

Chabad-Lubavitch of Delaware has announced that Dr. Velvel W. Green of Ben Gurion University, Israel will be the guest speaker at the upcoming Community *Melaveh Malkah* (post Shabbat dinner) on Saturday evening November 12 at 8 p.m. at the J.C.C. Dr. Greene will also speak at Chabad Friday Night Live and Shabbat day meals at the Chabad House at the University of Delaware, 630 Lehigh Rd., Newark DE. Before making *aliyah* to Israel in 1986, Dr. Greene was a regular speaker at Jewish Student Encounters and has a reputation for insightful and humorous delivery.

Greene was born in Winnipeg, Canada, and graduated from the University of Manitoba with degrees in Agriculture, Food Science, Bacteriology and Public Health. In the early years of

NASA's Exbiology program, he headed several research programs for the search of life on Mars. He has since then become a leading expert in environmental sanitation and microbial contamination control. Dr. Greene is presently professor of Epidemiology at the Ben Gurion University, Be'er Sheva, Israel and is in the U.S. on a six week speaking tour.

Traditionally, the *Melaveh Malkah* meal prolongs the presence and the uplifting spirit of the Shabbat. The literal translation of *Melaveh Malkah* is "escorting the (Shabbat) queen," and that is done by partaking of a festive meal.

The cost of the program is \$9 per person and reservations must be made by Thursday November 3. For more information and reservations call Oryah Vogel at the Chabad office at 478-4400.

### Holocaust Anthology Published In W. Chester

"In Answer..." an anthology of writings by survivors of the Holocaust, will debut at a book signing Sunday, October 23, at 4 p.m. in Alumni House at West Chester University.

The anthology was edited by Dr. Franklin H. Littell, emeritus of Temple University, and Drs. Irene G. Shur and Claude R. Foster, professors of history at West Chester University. Dr. Shur has served as director of the National Association for Holocaust Education since 1978. She previously co-edited with Dr. Littell, "Reflections on the Holocaust," published in 1980 by the American Academy of Political and Social Sciences. Dr. Foster, has co-translated with Mildred Van Sice Holocaust survivor Aime Bonifas' autobiography, "Prisoner 20,801: A French National in the Nazi Labor Camps."

Dr. Shur points out, "In examining current literature, we (the editors) learned that for the past decade, various denials of the Nazi atrocities have been put forward by groups calling themselves 'Revisionists.' We saw these 'Revisionists' twisting the truth and presenting false reasons for the deaths in the ghetto and concentration camps, and the millions of stories of these events.

"In Answer..." is a new anthology of 21 essays from former inmates and survivors, authors, professors, clergy and laypersons, written in response to the Revisionist movement.

"In Answer..." is published by Sylvan Publishers, Ltd. of West Chester. For more information, contact Dr. Irene Shur at (215) 436-2789 or 696-3609.

### Bazaar

The Wilmington Chapter of Deborah Hospital will hold their annual Bazaar on Sunday, November 6, at the B'Nai Brith Building, rear entrance, 8000 Society Drive, Claymont, Delaware from 11 a.m. to 4 p.m. The bazaar will feature sport clothes, toys, jewelry, white elephant, Revlon Cosmetics and homemade food. Lunch will be served.

### Auto Show To Aid Ministry Of Caring

The Ministry of Caring, Inc., is sponsoring The First Annual Auto Show For The Homeless in Delaware Park, Saturday, October 29, from 10 a.m. to 10 p.m. and Sunday, October 30, from noon to 6 p.m.

There will be refreshments sold and a variety of entertainment. Admission tickets are \$6 for adults and \$3 for children under 12. A dollar of the admission ticket will go towards a chance for a new car being given away. Proceeds will go to help the three Mary Mother of Hope Houses, the House of Joseph, and the Job Placement Center operated by the Ministry of Caring, Inc. For more information and advance tickets call 652-5523.

### Naches

#### Hirzel/Akell

Dorothy M. Hirzel and Robert B. Akell were married on Sunday September 25 at Congregation Beth Emeth.

#### Chasin

Carol Chasin was inducted into the Pi Sigma Alpha National Political Science Honors Society. She has just completed her Junior year at the University of Delaware.

Steve Chasin was inducted into the National Honor Society at Mount Pleasant High School. He is also a member of the High School Academic Bowl team from Mount Pleasant.

They are the children of Dr. and Mrs. David Chasin of Wilmington.

### Campaign Benefits From Youngster's Mitzvah

One of the first pledges of the Jewish Federation of Delaware's 1989 campaign season was made recently by David Paz, who hand-delivered his *tzedakah* to Federation Executive Robert N. Kerbel on October 11.

David's contribution was collected in his *tzedakah* box to which he added every Shabbat. He told Kerbel that when he receives gifts of money, he always puts a portion of it in his *tzedakah* box as well. He does

this "to help people who need help."

Kerbel, in accepting the donation on behalf of the Federation Campaign, said, "David's gift of nearly \$35 is the largest single contribution of any primary grade student to this Federation's campaign." He added, "This young man is an example that could be emulated time and time again."

David, who is the son of Moses and Cherall Paz, is in the second grade at Albert Einstein Academy.

### Beth Emeth School Offers Education For All Levels

Religious School at Beth Emeth is underway with classes for students from Pre-School through Grade 12, as well as a Beginning Hebrew Class for Adults.

Beth Emeth's Monday Fun Group (for children ages 4 and 5) meets each Monday for an hour from 1 to 2 p.m., and the children learn about the holidays, some basic Hebrew vocabulary, songs, games, and Bible stories in a relaxed atmosphere. They spend time on special art and cooking projects as they learn about each holiday and festival.

The Sunday School Program has classes for students in Kindergarten through Grade 7 with a curriculum that stresses Basic Judaism and offers many opportunities to participate in Jewish experiences as they learn about Judaism. Jewish music, art projects, Hebrew conversation, and special enrichment programs are part of the curriculum.

Beth Emeth's Hebrew classes meet mid-week for grades Aleph through Hey. Students learn reading and language skills as they master the Hebrew language.

Students in Pre-Confirmation meet each Tuesday evening at the Jewish Community Center where 8th and 9th grade students participate in a two-

year curriculum which emphasizes American Jewish History and Jewish Values. The Pre-Confirmation curriculum is supplemented with outside resources during the year. A variety of speakers, films, programs and participatory events are added to the basic curriculum. These programs often include Jewish teens from the other Delaware congregations so that the students have an opportunity for social interaction with other Jewish teens.

Students in Grade 10 participate in the Confirmation Class, and they meet each Sunday with Rabbi Grumbacher for a class that focuses on Understanding Judaism and any additional topics for discussion that the class is interested in studying. The class studies the Jewish liturgy in Shabbat and Festival Services, after which they write their own creative service for the Shavuot/Confirmation Service. Each year the Service is printed in a special booklet form and is used at the Festival Service making the students very much a part of the Confirmation ceremony that they have created.

Cadet Aides are 11th and 12th grade students who serve as Teaching Assistants in our Sunday School and almost all

of the Confirmands become Cadet Aides.

"Judaism puts a great emphasis on education; and with this in mind, we try to offer the best possible learning environment for our students from the youngest pre-schooler to the

adults learning their Aleph-Bet," according to Suzanne Paul, religious school director. "Our formal curriculum and textbooks are supplemented on all levels by resource materials that stimulate and encourage learning."

### Reflections On Kristallnacht

November 13  
1:45-5:30 PM  
Clayton Hall  
Univ. of Del.



This program is partly funded by the Delaware Humanities Forum, a state program of the National Endowment for the Humanities.

For reservations and transportation, if required

Name (Please Print) \_\_\_\_\_

Address \_\_\_\_\_

Phone \_\_\_\_\_ Number Attending \_\_\_\_\_

One-fifth inservice credit available to Social Studies teachers grades 7-12

Return to:  
Jewish Federation of Delaware  
101 Garden of Eden Rd., Wilmington, DE 19803  
or Call 478-6200

### CLASSIFIEDS

Classified ads are available at \$1.00 per line (at least two lines, please). Send your ad, with check, to Classified Ads, The Jewish Voice, 101 Garden of Eden Rd., Wilmington, DE. 19803. (302) 478-6200

#### FOR SALE

HEATHER GREEN CONDO. Vicinity AKSE. 2-3 bedroom, 2 bath. Secured building. Call Bob Levine, Realty Assoc. 478-5640.

#### SERVICES OFFERED

PARTIES - WEDDINGS - TAVERNS, BAR & BAT MITZVAH. All Occasion DJ - Old and New Sounds. Call: Harry Crowley (302) 655-0955.

STEPHEN G. FRANGIA.  
Residential Window Cleaning.  
(302) 764-3230.  
References on request.

#### CAMP

STUDENT TOUR AND CAMP CONSULTANTS. No fee charged. Let our 16 yr. of investigating programs, placing students, and getting feedback, help you select from over 500 programs; all sports, college and European and U.S. programs. Dorothy Graff, Diane Petrosky, 215-642-5882.

#### GARAGE SALE

GARAGE SALE - Treasures.  
2201 Market St., Wilmington. Every Saturday 12-7 PM.

#### HOUSEKEEPING

ALL PROFESSIONAL HOUSECLEANING done in your home weekly or bi-weekly. Experienced. Call for details. Kathy Paszek (302) 292-1607.



David Paz making his donation to Federation Executive Robert Kerbel.

# Announcements/Events

## SAVE THE DATE!

**Kristallnacht Commemoration at the Holocaust Memorial in Freedom Plaza**

\*\*\*

**November 9, Noon**

## Kutz Auxiliary Hanukkah Bazaar

On Sunday, November 6 the Kutz Home Auxiliary will be holding its annual Hanukkah Bazaar which is being chaired by Mutzie Bellak, Helen Goldberg, and Ida Goldstein. The proceeds from this event will be used for the purchase of supplies for the residents' social and recreational activities program. There will be a raffle, refreshments, bake sale, and a sale of residents' handiwork.

At 1 p.m. the newly refurbished lobby will be dedicated. The renovated corridors and lobby are the culmination of three years of fund-raising efforts by the Auxiliary. The \$122,000 raised by the 1985, 1986, 1987 Forget-Me-Not Balls, in addition to other contributions, made this project possible. A plaque will be presented in recognition of the many contributions made by the Auxiliary. Over the years, the Auxiliary of the Milton and Hattie Kutz Home has undertaken many projects to enhance the lives of the residents.

## Haddassah Art Auction

The Newark Chapter of Hadassah will hold an art auction and exhibition on Sunday, November 6, at Temple Beth El in Newark. A preview of the art will begin at 6:30 p.m. and the auction is scheduled to begin at 7:30 p.m.

The art will be presented by Art Auctions, Inc., of Los Angeles. All proceeds from this sale will benefit Hadassah. For further information call Mary Lee Lutz at 834-9601.

## Beef And Beer At Beth El

Temple Beth El will hold a "Beef and Beer" party on Saturday, October 29, from 9 p.m. to 1 a.m. at the Temple at 301 Possum Park Road in Newark. Music will be provided by the Golden Touch Band. Tickets are \$15.00 with advanced sales only. Door prizes and 50/50 chances will be available. Come in costume and get a free 50/50 chance. For more information, call the Temple office at 366-8330.

## Raul Hilberg To Speak At Kristallnacht Commemoration

The infamous Kristallnacht, "The Night of Broken Glass," is a haunting reminder of the Nazi Holocaust. On Sunday, November 13, 1:45-5:30 p.m. at Clayton Hall at the University of Delaware there will be a program to commemorate the 50th anniversary of this pogrom that marked the beginning of the Holocaust.

Raul Hilberg, professor of political science at the University of Vermont and world renowned scholar of the Holocaust will be the featured speaker at the program, *Reflections on Kristallnacht, Gathering the Fragments*. Hilberg has devoted most of his life to a single book, *The Destruction of the European Jews*. First published in 1961, the book has been reissued in a three volume second edition and is considered by many historians as the definitive work on the Holocaust. The program will be introduced by Professor Willard A. Fletcher, history professor at the University of Delaware, who will set the scene for the tragic events of the night of Nov. 9-10, 1938 and introduce the 1938 Movie Tone film, *America Condemns Nazi Terrorism*.

A panel discussion on the moral, legal and literary implications of Kristallnacht moderated by Helen Foss, Educational Advisor to Governor Castle, will follow Professor Hilberg's presentation. Panel participants are Max S. Bel, Jr., Esq., president of the American Civil Liberties Union, Dr. Sara R. Horowitz, English professor at the University of Delaware and Dr. Lucia Palmer of the University of Delaware Philosophy Department. The



Raul Hilberg

program will conclude with Professor Nancy King reading *Splinters* by Ida Fink.

The program is sponsored by the Halina Wind Preston Holocaust Education Committee of the Jewish Federation of Delaware and partly funded by the Delaware Humanities Forum, a state program of the National Endowment for the

Humanities. The program is open to the community at no charge and the attendance of secondary and college students is encouraged.

For reservations and transportation, if required, New Castle County residents may call 478-6200. Dover area residents may call Kim at Beth Shalom, 734-5578.

## Record Enrollment At Gratz

The 1988-89 school year began at Delaware Gratz with the largest number of students in its 24 year history. Seventy-one teenagers are currently enrolled in a comprehensive Hebraic and Judaic high school program.

Courses are offered in Hebrew language and literature, Bible, Jewish ethics and values, Israel, Jewish history and literature, Jewish life, and contemporary Jewish issues. Two novel enrichment courses were also implemented for the fall semester. The new school year also introduced a unique Hebrew Ulpan program developed exclusively for Gratz. High school students learn to further develop their Hebrew speaking skills through visual activities, games and role playing having to do with everyday situations. Following a period of conversation, reading and writing skills are incorporated into every lesson. Courses are designed

on four different levels and students are placed according to language proficiency. Everyone at Gratz is excited and enthusiastic about this new Ulpan course.

Extracurricular social and educational activities are also an important part of the Gratz program. Gratz credits are

transferable to most area high schools and college credits are also granted. Jewish teaching certificates may also be earned by qualified students who participate in the education courses.

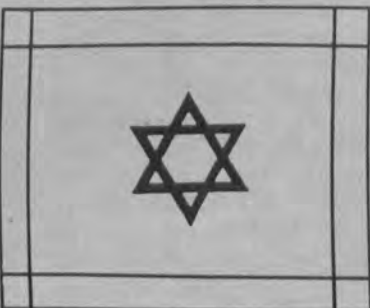
For more information, please call 478-5026.

## Gewirtz Honored At Gala

Adas Kodesch Shel Emeth Congregation feted Rabbi Emeritus Leonard B. Gewirtz and his wife, Gladys, at a gala dinner-dance on Sunday evening, October 16, attended by approximately 300 congregation members and friends. Wilmington Mayor Daniel S. Frawley appeared at the dinner to read a proclamation recognizing the Rabbi's contributions to the Wilmington community and declaring October 16, 1988, to be "Rabbi Leonard B. Gewirtz Day."

One of the highlights of the program was a narrated slide show composed by Rina and Stephen Marks. The slide presentation depicted the Rabbi's 41-year career in Wilmington.

Following presentations by representatives of the congregation and an address by Rabbi Arnold Feldman of Philadelphia, Rabbi Gewirtz spoke briefly and exuberantly, thanking the congregation and attributing his long and successful service to Adas Kodesch to the congregation's continued faith in him.



## Einstein Academy Celebrating Anniversary

With the beginning of the 1988-89 school year, Albert Einstein Academy is celebrating its eighteenth ("chai") anniversary.

In the fall of 1970 Einstein opened as Delaware's only Hebrew day school in the B'nai B'rith Building on Miller Road. Following that first year, the school moved twice (to Beth Emeth and then to Adas Kodesch Shel Emeth) before settling after nine years into its present permanent location. Even after moving into the new wing at the Jewish Community Center, the school found its quarters too small and additional space had to be rented for a while at the Holiday Inn.

But, in spite of its difficult history, Einstein has reached its eighteenth year and as a

way of celebrating that milestone, the school has planned a tribute to those community leaders whose efforts created it and kept it going. A gala event is planned for Sunday, November 20, at the JCC. A cocktail reception will begin at 2 p.m. with entertainment by Bob Wiener.

Those leaders being honored at the reception are Nisson Finkelstein, Sarita Gross, Harry Haskell, Richard Kane, Gershon Klein, Rabbi Jacob Kraft, Jules Levin, Sam London, Robert Rosen, Ruth Siegel, Simon Steinberg and Barrie Weisman.

The event is open to the community and advance reservations are requested. For reservations or information, call the school office at 478-5026.

## Tri-State Singles

The Jewish Tri-State Singles, ages 29 to 49, will host a Wine and Hor's D'euvres Party on Sunday, October 23, from 5:30 p.m. to 9:30 p.m. at 11 Woodbrook Circle, North Wilmington.

The cost is \$3 — plus last names beginning with A through J bring wine, and K through Z bring an hors d'euvre (Cost is \$7 for "emptyhanders.")

For information call 475-8687, or 475-2548.

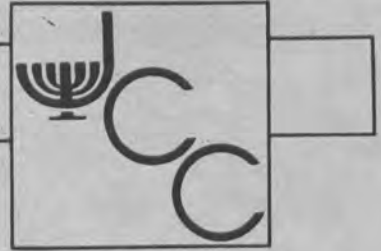
## Beth Emeth New Members Breakfast

The Membership Committee of Congregation Beth Emeth invites all new and prospective members to a breakfast and open house at the temple on Sunday, October 30, beginning at 9:30 a.m. The breakfast will be prepared by the Beth Emeth Brotherhood.

The purpose of the breakfast is to give new and potential members a chance to meet Rabbi Grumbacher, the Board of Trustees and other members, as well as learn more about the congregation, according to Verna Schenker, Chairperson of the Membership Committee.

For further information call Kathy Greschler at 478-0253. Free babysitting will be available during the breakfast.

# Jewish Community Center



## Senior Center To Celebrate 13th Anniversary

Sam Appel, renowned American Jewish singer and show business personality will be performing at the 13th anniversary celebration of the Senior Center on Thursday, November 3. Sam was one of Prime Minister Golda Meir's favorite vocalists and performed in Israel many times at her request. He has appeared on the Tonight Show with Johnny Carson and on the Joey Bishop Show numerous times and has received many awards from religious, military, fraternal, civil and show business groups.

The evening will begin with a special anniversary dinner at 5 p.m., followed by Mr. Appel's musical performance.

The community is invited to celebrate this 13th anniversary. A special holiday dona-



tion is requested. For additional information, contact Ray Freschman at 478-5660.

## Theatre Workshop

The Child and Family Division is offering a special theatre workshop for children in kindergarten through 6th grade. "We Are Your Future," an original play written by Don Slovin, will be one of several vehicles for "hands on" exploration of theatre concepts. Emphasis will be placed on the development of skills in acting, publicity, backstage crew, scenery/costume design and video scene work. The workshop instructor will be multi-media specialist, Don Slovin of Don's School of Ar-

tistic Development.

The Theatre workshop will be offered on Mondays from 4:15 - 5:15 p.m. and is scheduled to begin on November 14. The fee for center members is \$30 and for children enrolled in the JCC's after school childcare program the fee is \$15. A kosher snack and transportation from area public schools is also available at an additional cost.

For more information, contact the Child and Family Division Business Office at 478-5660.

## Music Class Offered

Help your child develop an appreciation for music through records and original songs. Introduction and exploration of three basic elements of music, instrumental families, historical overviews and the process for creating songs will all be included in this program. The class will be offered on Thursdays from 4:15 - 5:15 p.m. and is scheduled to begin on November 17. The fee for center members is \$16 and \$8

for children enrolled in the JCC's after school childcare program.

The instructor for this program will be multi-media specialist, Don Slovin of Don's School of Artistic Development. A kosher snack and transportation is also available from several area public schools for an additional cost.

For more information, call the Child and Family Division Business Office at 478-5660.

## Flu Shots Offered

The Division of Public Health will be offering flu shots to anyone age 60 or older at the Jewish Community Center on Wednesday, November 16 from 9:30 a.m. to noon. Registration is required to receive the free flu shot. Contact the Senior Center at 478-5660 to register.

## Opera Discussion

Seymour Sands from the Academy of Lifelong Learning will be offering a special outreach program focusing on the operas of Verdi and Puccini on Thursday, November 10 at 1 p.m. Mr. Sands has had a lifelong love for all music, especially opera and has been

teaching music courses at the Academy for over 5 years.

This program is open to the community and free of charge. For additional information, contact Ray Freschman, Senior Center Coordinator at 478-5660.

## Music & Movement For Pre-Schoolers

Correlating music, pace and rhythm will be used for identification of body parts and development of coordination, utilizing songs, finger plays and stories. The class will be offered on Mondays from 1 to 1:45 p.m. for two year olds; Tuesdays from 1 to 1:45 p.m. for three year olds; Thursdays from 1 to 1:45 p.m. for four year olds and on Fridays from

1 to 1:45 p.m. for five year olds. The instructor will be multi-media specialist, Don Slovin of Don's School of Artistic Development.

The fee for center members is \$15 and classes are scheduled to begin the week of November 14. Contact the Child and Family Division at 478-5660 for additional information.

## Body Sculpturing Through Hatha Yoga

Weight control, firming, slimming and relief of tension are all part of this self-improvement dealing with the emotional and mental aspects of the individual.

The Health and Fitness Department is offering a five week yoga mini-session on Mondays and Wednesdays from 6:30 to 8:30 p.m. The fee for members for one day per

week is \$17 and \$30 for two days per week; the fee for non-members for one day per week is \$24 and \$36 for two days per week. The instructor for this program is Joan-Marie Boyd and classes are scheduled to begin the week of November 21.

For more information, contact the Health and Fitness Control Desk at 478-5660.

## Music Lessons

Multi-media specialist, Don Slovin will be offering private music lessons for children enrolled in kindergarten through sixth grade. Lessons are available for various instruments including the piano, saxophone, violin, drums and

different types of percussion instruments. The fee for a half hour lesson is \$10 and \$12 for a 45 minute lesson.

Private lessons may be arranged by calling Don Slovin at the Child and Family Division Business Office, 478-5660.

## Kidspace

Children enrolled in kindergarten through sixth grade are invited to enroll in Kidspace programs for four afternoons of fun, social and recreational activities which will include crafts, projects, games, swimming and outdoor fun.

The (parent-teacher conference) Kidspace programs will be offered from 12:15 - 5:45 p.m. on November 15, 16, 17 and 18. The fee for center members is \$10 per afternoon and transportation is available from several area public schools. The Child and Family Division is also providing a special drop-off service at local Hebrew Schools for a fee of \$8 per child. The transportation service is limited, so register early. For more information, call 478-5660.

## TEEN CALENDAR

**Kibbitz With Friends**  
Grades 7 and 8  
Tues., Nov. 1 and 13  
5 to 7 p.m.

**Happy Hour**  
Grades 9 through 12  
Thurs., Nov. 5  
5:30 to 7 p.m.

**Sleepover Festival**  
Grades 9 through 12  
Sat., Nov. 5 to  
Sun., Nov. 6  
8 p.m. to 10 a.m.

**Election Day  
Activities**  
Tues., Nov. 8

**Make Your Own Subs**  
Grades 7 and 8  
Thurs., Nov. 10  
5:30 to 7 p.m.

## No Medals, But Better Relations For Israel Following Olympics

By HUGH ORGEL

TEL AVIV (JTA) — Israel won no medals at the 24th Olympic Games in Seoul, South Korea, but several of its 20-member team turned in

"highly respectable" performances. That was true in the Flying Dutchman class yacht races off Pusan, where Yoel Selah and Eldar Amir came in fourth out of 22 boats. They

missed a bronze medal by only a few points.

Yaacov Shmuel, boxing in the lightweight division, was graded fifth to eighth place. He made the quarter finals after a knock-out win, but lost a decision to an Italian pugilist, who went on to win a gold medal. In wrestling, Even Bernstein made 11th to 13th place among 22 entrants.

Meanwhile, Israeli diplomats are confident that political and economic ties with Korea can be strengthened, now that the stresses and strains of hosting the Olympics are over in Seoul. The new Israeli ambassador, Nahum Eshkol, presented his credentials to the Korean president shortly before the games opened last month. But further contacts were put on hold because the Koreans were

preoccupied with the Olympics.

The Israelis admit they made a mistake by closing down their diplomatic mission in Seoul more than 10 years ago. The Koreans regarded that move, done for economic reasons, as a slight. They were angered further by Israel's decision to name its resident ambassador in Tokyo the non-resident envoy to Korea. When the Israelis sought to resume diplomatic and economic relations in recent months, the Koreans put them off, for fear of antagonizing the Arab Olympic participants and increasing the danger of terrorist attacks during the games.

In another development, Yitzhak Ofek, chairman of the Israel Olympics Committee reported that the five-year ban on the Israel Boxing Associa-

tion's participation in international tournaments could be reduced to one year. The ban was imposed after Israeli boxers competed in South Africa, which is boycotted by the International Boxing Association because of its apartheid policies.

Ofek said he understood from a conversation he had in Seoul with Anwar Chowdry, International Boxing Association chairman, that chances are good Israeli boxers will be able to participate in the 1992 Olympics in Barcelona. He said Chowdry advised Ofek that Israel should request a reconsideration at the next meeting of the association in Kenya. "I can give you my word of honor I will support a reconsideration request," he quoted Chowdry as saying.

## B'nai B'rith Aids Stricken Jamaican Community

B'nai B'rith International, responding to an urgent plea from the Jewish community of Jamaica, has mounted a drive to encourage contributions to help restore Jewish institutions on the Caribbean island devastated by Hurricane Gilbert.

A telegram from the United Congregation of Israelites in Kingston describes damage done to the synagogue and its contents and to the Hillel

Academy estimated at millions of dollars.

Seymour D. Reich, International President of B'nai B'rith, immediately authorized an initial contribution from the B'nai B'rith Disaster Relief Fund and has issued a call to individuals and organizations to "join us in this humanitarian effort. As always, but especially at this holiday season, we must rally together to extend a helping hand to fellow Jews who are in need."

# Tax Exemption Status Of Holocaust Revisionist Group Investigated

By MARLENE GOLDMAN  
NEW YORK (JTA)—The National Jewish Commission on Law and Public Affairs recently began investigating a decision by the Internal Revenue Service to grant tax exemption to a group that denies the Holocaust existed. While the organization, the Washington-based German American Information and Education Association, cites its objective as the restoration of Germanic influence in the United States, its newsletters focus on refuting the fact of the

Holocaust. "They essentially took the position that all allegations about the Holocaust are a manifestation of international Zionism," said Alan Mond, managing director of COLPA. "They claim it is impossible to kill so many in that span of time," he added. The newsletters also include statistics to support their claims against the validity of the Holocaust.

COLPA is currently attempting to determine who is supporting the group. "We know some people have received

their pamphlets," Mond said. "Perhaps it's because their names sound Germanic." A friend of someone who received the German group's mail brought the organization to the attention of COLPA.

In the association's letter, they advertised that they are now tax exempt and encouraged donations from members. The exemption enables people to make tax-deductible contributions to the organization, and exempts the group from paying taxes on its income.

"We are just in the

preliminary steps of looking into the filings and application for exemption from the organization and what they claim to be," Mond said. "We have not yet reviewed all the information, so we can't go public with what we have yet," he explained.

Based upon their findings, COLPA attorneys will determine whether there are grounds for challenging the group's tax exemption in court. "Now, we just want to alert the community that such an organization exists," Mond said.

# Israeli Election Ads —

(Continued from Page 1)

Both parties trotted out their complements of reserve generals.

Former Chief of Military Intelligence Yehoshua Saguy insisted, for Likud, that Israel cannot afford to withdraw from the West Bank.

Avigdor Ben-Gal, former commander of the northern front, appeared on behalf of Labor, saying that Israel should "exploit its military victories to make peace."

Ben-Gal's appearance was followed by an exposition of Labor's defense platform. Its strategy calls for deploying troops along the frontier with Jordan, but withdrawing them from Arab towns on the West Bank in favor of total demilitarization there.

In the economic sphere,

Labor claimed it beat inflation. Likud focused on Finance Minister Moshe Nissim's stand against the trade union's inflationary demands.

Likud grew ever more acerbic in radio broadcasts. It portrayed Peres as a vacillating leader whose own friends say he "doesn't know what he is doing."

Each party studies the other's propaganda and counters it with speedily produced videotapes. All broadcast material must pass the scrutiny of High Court Justice Eliezer Goldberg, chairman of the Central Election Committee.

New parties were allocated only 10 minutes of air time apiece, and are saving their precious time until it is nearer to Nov. 1.

The ultranationalist Techiya party's television commercial opened with a pastoral view of the West Bank landscape, suddenly screened by the wire grid that settlers put on the windows of their cars as protection from Arab stone-throwers.

The leftist Citizens Rights Movement and the Shinui Party juxtaposed Israel's declaration of independence with their perception of the perversion of the spirit in Israel today.

The National Religious Party, worried by the emergence of a new moderate religious party, Meimad, is trying to woo voters seeking a traditional life.

Former Sephardic Chief Rabbi Ovadia Yosef is promising a heavenly blessing for everyone who votes for the ultra-Orthodox Shas party.

# AIPAC Denies Role —

(Continued from Page 1)

said AIPAC has merely put Chafee's votes on the record. He noted that while the senator from Rhode Island has voted for Arab arms sales, he also has voted for aid to Israel.

When Wallace asked Miller about the \$170,000 in pro-Israel PAC funds that have gone to Licht, Miller said he replied that "Licht has many friends in the Jewish community."

"We deal with a very politically aware and sophisticated audience," Miller said he told Wallace. "Our people make up their own minds." He said the Jewish community is not monolithic. Everyone does not think alike, nor do they vote alike.

Miller conceded that AIPAC was concerned about the upcoming "60 Minutes" program, as would be any individual or organization targeted by the hard-hitting investigative program.

Toby Dershowitz, AIPAC director of media relations,

said "60 Minutes" has no evidence that AIPAC coordinates or directs pro-Israel PACs. Instead, she charged that all it has is previously published allegations.

The memo that "60 Minutes" obtained was dated Nov. 3, 1987, and was written by Brenda Pearson, a junior member of AIPAC's political department, to Barbara Amouyal, who was media relations director at the time. Both Amouyal and Pearson have since left AIPAC. The memo urges that reporters for Jewish papers generate stories to get the Jewish community interested in Licht's race and to raise questions about Jackson's fidelity.

According to AIPAC officials, Amouyal asked Pearson for a memo in order to suggest news stories to journalists she accompanied on an American Jewish Press Association trip to Israel. The memo listed Licht and the Republican and Democratic candidates for president who were running at the time. It suggested that they

be asked about their positions on the Middle East.

The part on Jackson reportedly says AIPAC has enough information to "spill the beans on Jackson's extramarital affairs and finances of his PUSH operations." But it also cautions journalists not to solicit this information. Amouyal reportedly did not use the memo on the trip. Now a reporter for Defense News, she was on assignment in Texas and could not be reached for comment.

Thomas Dine, AIPAC's executive director, issued a statement saying that "no one in a position of responsibility approved the memorandum in question." Other AIPAC officials said no top leader of AIPAC knew of its existence until it became public.

This was confirmed by Rabbi David Saperstein, Washington representative of the Union of America Hebrew Congregations, who was in the AIPAC office when its leading officials learned of the memo and began searching for it. He said that "unless they were putting on a charade for my benefit," they had no idea the memo existed. He said they spent a hectic two hours searching for it during a time when the office was very busy.

In his statement, Dine declared that "AIPAC has not, does not and will not engage in attacks on the personal lives of political candidates or anyone else." He added that Jackson's "personal life is not and never has been the subject of discussion or action at any decision-making level of our organization."

# Kach Waiting on Ruling —

(Continued from Page 1)

ment in praise of the campaign's substance and the way it is being conducted. A spokesman for the prime minister said he was pleased with the party's performance so far.

The polls predict a close race between Likud and Labor. Some political observers attribute Sharon's uncharacteristic reticence to a desire to distance himself from the campaign if Likud fares worse than expected. His lieutenants deny this. They say the former defense minister and Yom Kippur War hero simply dislikes set-piece performances in front of cameras. He prefers large public meetings where he can speak

extemporaneously, they say.

Much of Likud's time this past week were devoted to condemnations of the rowdiness that has characterized the campaign to date. The party rejected charges that it has abetted and even instigated violence against Labor politicians. Likud activists charged that Labor's complaints are themselves a form of incitement.

Of the 27 parties now on the ballot, 14 are new ones, seeking Knesset representation for the first time. The Election Committee has approved code letters for each of them. When voters enter the booths on Nov. 1, they will select the ballots with the code of the party they support.

**ISRAEL NOW!**

Nov. 17-27, Dec. 8-18  
Jan. 19-29, Feb. 16-26  
March 16-26

**From \$1099**  
p.p./d.o.

Senior Adults from \$999

**JAY PRESS**  
INTERNATIONAL TRAVEL EXCHANGE  
2410 RHAWN ST., PHILA. (215) 332-2444 • 800-752-6050

For additional tourist information, Call the Israel Gov't Tourist Office, Washington, DC • (202) 364-5899

**THE 75th ANNIVERSARY PLAYHOUSE**

**TUES, NOV 1 thru SUN, NOV 6**

**"AN EVENING OF SHEER HAPPINESS!"**  
—FRANK RICH, N.Y. Times WORX



ME AND MY GIRL

**WINNER!**  
**3 TONY AWARDS**  
**5 DRAMA DESK AWARDS**  
**LAURENCE OLIVIER AWARD, London BEST MUSICAL OF THE YEAR**

Make checks payable to THE PLAYHOUSE THEATRE. Please enclose a stamped, self-addressed envelope for return of tickets, otherwise held at Box Office. Visa, MC, Am Ex & WSFS accepted. Special rates available for Groups, Seniors & Students.

<b>Tues-Sat Eves at 8 PM; Wed &amp; Sat Mats at 2 PM; Sun Mat at 3 PM</b>		
	<b>Orch/Mezz</b>	<b>Balcony</b>
Tues-Sat Eves at 8 PM	\$42	\$32
Sat Mat at 2 PM & Sun Mat at 3 PM	\$38	\$28
Wed Mat at 2 PM	\$34	\$24

**TELETRON 800-233-4050**  
**PHONE ORDERS NOW! (302) 656-4401**

# Hotline Promotes Israeli Tourism

NEW YORK (JTA) — A toll-free Israel travel hot line, providing timely information on tourism resources and special events in Israel, has been installed by the National Committee for Tourism to Israel as part of its nationwide campaign to increase American Jewish travel to Israel.

The Committee for Tourism, which functions under the auspices of the Conference of Presidents of Major American Jewish Organization in conjunction with the Israel Ministry of Tourism and El Al Airlines, will regularly update the hotline: 1-800-TRAVL40.

## Jewish 'Hostages' In Arab Lands

By ROBIN SCHWARTZ

Jews in Arab and Islamic countries live precariously, unsure whether an increase in fundamentalism, anti-Zionism or anti-Semitism will alter their already insecure position in society.

Even under benevolent governments in Morocco, Turkey, Egypt and Tunisia, Jews "never know what's going to happen," said George Gruen, director of Middle East affairs for the American Jewish Committee. "No one can predict when the regime may be overthrown by assassination, coup or popular uprising."

Shimon Peres, Israel's Foreign Minister, speaking at the United Nations recently, called on the governments of Yemen, Syria, Iran and wherever Jews are denied their religious rights to "respect human rights and... reject that shameful illusion that Zionism is racism."

In Syria, six Jewish men are believed to be imprisoned under cruel conditions and denied due process of law. Their crimes: suspicion of leaving Syria or traveling "illegally."

Damascus maintains that because it is in a state of war with Israel, it is necessary to place severe travel restrictions on its estimated 4,000 Jews. Emigration is forbidden. When leaving the country temporarily, Jews must provide a substantial deposit to ensure their return. Although this law applies to all Syrians, it is only enforced for Jews — whose passports and identity cards are stamped "Musawi," Arabic

for Jew — and Palestinian Arabs. The latter often pay less than \$20, if anything at all. In addition, the Syrians refuse to grant visas to Jewish family members simultaneously — an incentive for relatives to return.

Syrian Jews are prohibited from contacting Israelis and are denied government positions, according to the 1987 State Department's *Country Reports on Human Rights Practices*. Last May, Richard Schifter, Assistant Secretary of State for Human Rights and Humanitarian Affairs, said: "The situation of the Jewish community in Syria is one of our major human rights issues with the government of Syria. We have voiced our concerns and opinions on this subject at the highest levels of the Syrian government and we will continue to do so."

In Lebanon, at least nine Jews have been kidnapped. The Organization of the Oppressed on Earth, believed to have ties with the Iranian-inspired Hezbollah or Party of God, has claimed responsibility for killing at least eight Jews including Elie Hallak, known as the "doctor of the poor" because he treated patients regardless of their religion or race, according to Gruen.

Only three of the hostages' bodies were released to the families for burial. There is a glimmer of hope that two Jews — Isaac Sasson, president of the Jewish community, and Salim Jammous, its secretary general — may still be alive. Gruen added that Americans and the world community need to help gain the release of all

hostages in Lebanon. "Their only crime is that they were active in the Jewish community," Gruen said. Only 60 Jews remain in Christian East Beirut, down from 6,000 in 1967.

According to David Shucker, chairman of the Israeli Public Council for Yemenite Jewry, almost 6,000 Jews are trapped in North Yemen and face extermination.

"If we remain silent there will be a holocaust just like there was in Europe," Shucker said, according to an article in the Sept. 17 international edition of the *Jerusalem Post*. Thousands of Palestinian Arab terrorists, evicted from Beirut six years ago, "rape Jewish women, kidnap their children and rob their houses. Many of them (Yemenite Jews) were forced (by circumstance) to convert to Islam," Shucker asserted.

"The Israeli government is working continuously to enable (the Jews) to leave" Yemen, said one Israeli official.

Gruen and the Israeli official estimate that about 1,000 to 2,000 Jews are trapped in North Yemen. Their biggest problems: lack of regular communication with the outside world, no contact with Israel, and government refusal to permit emigration.

In North Yemen — as in other Arab countries including Saudi Arabia and Qatar — the public practice of Judaism and Christianity is forbidden.

Iran, since Ayatollah Ruhollah Khomeini took power, has harassed Jews, removed them from governmental and university posi-

tions, taken their property, and executed nine on charges including support for Zionism, according to Gruen. About

30,000 remain of the pre-revolutionary total of 80,000. (Reprinted from *Near East Report*.)

## German Church Condemns Kristallnacht Silence

By TAMAR LEVY

GENEVA (JTA) — "What happened in November 1938 happened in public, in full view of everyone ... And no one could say he or she knew nothing about what was going on," the German Evangelical Church declared in a statement released here last week.

The statement noted the 50th anniversary of Kristallnacht, Nov. 9, the first organized Nazi pogrom against German Jews. It acknowledged and condemned historic Christian guilt for the persecution of Jews, and its support, indifference or "fearful silence" in the face of atrocities.

The German Evangelical Church in East Germany, which embraces the United, Reform and Lutheran branches of Protestantism in both Germanys, issued its statement through the Geneva-based World Council of Churches.

Kristallnacht, or night of broken glass, received its name from the smashed windows of Jewish homes, shops and synagogues that littered the sidewalks of German cities and towns after the pogrom.

The statement by the Evangelical Church begins by noting that "Nov. 9, 1988 marks the 50th anniversary of the day when the Nazi leaders of the German Reich ordered

the synagogues to be burnt, Jewish places of worship desecrated, Jewish shops and homes plundered and Jewish citizens mistreated, abducted or murdered.

"What happened in November 1938 happened in public, in full view of everyone. Targets of this persecution were all Jewish people. Racial hubris thus revealed its cruel disdain for human rights," the statement added. "No one could say he or she knew nothing about what was going on. Those who planned and carried out this crime could reckon with the support, indifference or fearful silence of the majority of our nation."

"Christians — with few exceptions — also remained silent," the statement noted. It said it recalled these events "not to level accusations at the generation of those who were involved in them. Instead, we are aware of the fact that the guilt of that time will retain its power to bind us if we remain silent or try to suppress the memory."

The statement acknowledged that "both theology and the church played a part in the long history of alienation from and enmity toward the Jews. The church did not recognize the deep inner ties between Judaism and Christianity."

**Integrity  
and  
Proven  
Leadership**



Dennis

**GREENHOUSE**

for

**New Castle County Executive**