

# The JEWISH VOICE

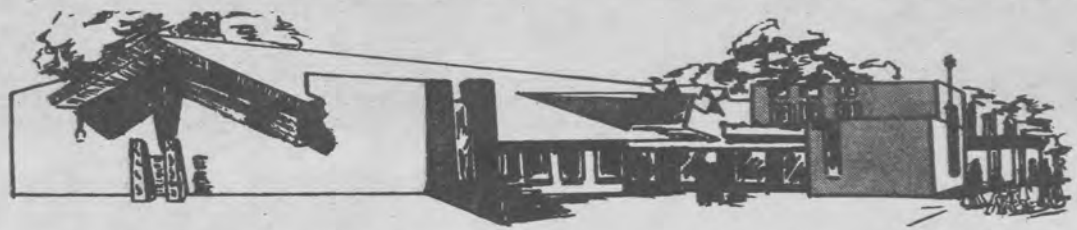
"You heard it in  
The Jewish Voice"

## Guide To The Jewish Community of Delaware

LUBAVITCH OF DELA  
\* CONGREGATION BETH  
H SHOLOM \* B'NAI B'RITH HOUS  
DELAWARE \* B'NAI B'RITH LODG  
COUNTRY CLUB \* GRATZ HEBREW HIGH  
\* ALPHA EPSILON PI FRATERNITY \*  
NITY CENTER \* JCC PRESCHOOL  
FAMILY SERVICE \* JEWISH F  
JEWISH HISTORICAL SOCIETY  
ANS \* JEWISH VOICE \* JE  
MITTEE \* MILTON & HATTIE  
AUXILIARY \* LABOR ZI  
TUAL BENEVOLENT SOC.  
ISH WOMEN \* ORT \* TEMPLE  
DELAWARE ENDOWMENT  
KODESCH SHEL EMETH CONG  
SHOP \* KI TOV CLASSES  
CHABAD-LUBAVITCH OF DE  
EMETH \* CONGREGATION B  
BETH SHOLOM \* B'NAI B'RITH HO  
OF DELAWARE \* B'NAI B'RITH LO  
COUNTRY CLUB \* GRATZ HEBREW H  
\* ALPHA EPSILON PI FRATERNITY HO  
COMMUNITY CENTER \* JCC PRESCHOOL \*  
FAMILY SERVICE \* JEWISH FEDERATION  
JEWISH HISTORICAL SOCIETY \* BESTY \* J  
ANS \* JEWISH VOICE \* JEWISH COMMUNITY  
MITTEE \* KADIMA \* MILTON & HATTIE KUTZ  
AUXILIARY \* LABOR ZIONIST ALLIANCE \*  
TUAL BENEFIT SOCIETY \* NATIONAL CO  
WOMEN \* ORT \* TEMPLE BETH EL \* JEWISH  
DELAWARE ENDOWMENT FUND \* JEWISH S  
SAH \* ADAS KOSESCH SHEL EMETH CONG  
JUDAIC WORKSHOP \* KI TOV CLASSES \*  
ACADEMY \* CHABAD-LUBAVITCH OF DEL  
GATION BETH EMETH \* CONGREGATION  
CONGREGATION BETH SHOLOM \* B'NAI B'R  
B'RITH WOMEN OF DELAWARE \* B'NAI B'R  
BRANDYWINE COUNTRY CLUB \* GRATZ H  
HADASSAH \* HILLEL \* ALPHA EPSILON PI FRATERNITY  
\* JEWISH COMMUNITY CENTER \* JCC PRESCHOOL \* CA  
\* BBYO \* JEWISH FAMILY SERVICE \* JEWISH FEDERATION OF  
DELAWARE \* JEWISH HISTORICAL SOCIETY \* BESTY \* JEWISH  
WAR VETERANS \* JEWISH VOICE \* JEWISH COMMUNITY RELA  
TIONS COMMITTEE \* MILTON & HATTIE KUTZ HOME \* KADIMA  
\* KUTZ HOME AUXILIARY \* LABOR ZIONIST ALLIANCE \* MONTE  
FIORE MUTUAL BENEVOLENT SOCIETY \* NATIONAL COUNCIL  
OF JEWISH WOMEN \* ORT \* TEMPLE BETH EL \* JEWISH CO  
MUNITY OF DELAWARE ENDOWMENT FUND \* JEWISH  
\* ADAS KODESCH SHEL EMETH CONGREGATION \* THE JUDAIC  
WORKSHOP \* KI TOV CLASSES \* ALBERT EINSTEIN ACADEMY  
\* CHABAD-LUBAVITCH OF DELAWARE \* CONGREGATION BETH  
EMETH \* CONGREGATION BETH SHALOM \* CONGREGATION  
BETH SHOLOM \* B'NAI B'RITH HOUSE \* B'NAI B'RITH WOMEN  
OF DELAWARE \* B'NAI B'RITH LODGE #470 \* BRANDYWINE

## TABLE OF CONTENTS

Education/Hebrew schools.....	8
Endowment Fund.....	5
Federation allocations distribution.....	5
Guide to the Jewish calendar.....	6
History of the Jewish community.....	3
Holocaust memorials in Delaware.....	17
Jewish Community Center.....	7
Jewish Community Relations Committee.....	5
Jewish Family Service.....	12
Jewish Federation of Delaware.....	5
Local chapters of national organizations.....	19
Map of the Jewish community.....	10
Milton and Hattie Kutz Home.....	14
Synagogues.....	9
The Jewish Voice.....	5
Youth groups.....	8



# AKSEH

*Adas Kodesch Shel Emeth  
Congregation*

*A Traditional Synagogue  
Welcomes Newcomers and  
Unaffiliated Families to  
Join Us and Meet our New  
Rabbi, Nathan N. Schorr*

★ **Shabbos Services, each Friday, at 8 p.m.,  
Oneg Shabbat following services**

★ **Shabbos Services, Saturday, starting at  
8:45 a.m., Torah Services at 10 a.m.,  
Kiddush following services**

*For additional information regarding services and  
membership, please contact Mr. Kevin Gross,  
Vice President/Membership, at 762-2705*

**Washington Boulevard & Torah Drive, Wilmington, DE 19802  
(302) 762-2705**

## ADMISSIONS OPEN HOUSE

WILMINGTON  
FRIENDS SCHOOL



curious minds • great teachers • clear values

Come tour our facilities and meet our outstanding faculty and students. Explore the distinctive differences we can offer your children.

**Sunday, November 4, 1990**  
Program begins at 2 p.m.  
and ends at 4 p.m.



*Grades Pre-K through 4:*  
Lower School campus  
(child care provided)  
*Grades 5 through 12:*  
Upper School campus

**101 School Road, Alapocas  
Wilmington, DE 19803**

Call for information: (302) 576-2930  
*Financial aid, child care and bus service available*



It sounds too good to be true . . . "Lose up to 20 pounds in 3 weeks." What's more, this quick "fat fix" promises you can do it lying down!

"There is no magic here," says Deborah McCamie, owner of Deborah McCamie Beauté, Wilmington's exclusive European slimming and body treatment salon. "We offer safe and scientifically proven ways of losing pounds and inches."

The three basic weight loss methods combined with personal diet plans practiced at the salon are; electronic muscle stimulation, detoxification, and emulsification. For women who hate to exercise, or for those with stubborn figure problems like saddlebags.

### EXERCISE WITHOUT PAIN

Electronic massages contract the muscles and burn off unwanted fat. In 45 minutes you get a complete workout equal to an 8-hour jog.

"Now women can get help for their individual figure problems just by letting my machines zero in on specific areas where they want to lose inches or pounds," McCamie says.

**DETOXIFICATION UNCLOGS YOUR SYSTEM**  
Detoxification, a popular weight loss treatment in Europe, uses seaweed preparations, deep massages and sea salts to extract unwanted body fluids and fats.

"Ladies just love being pampered with the massages and special oils," McCamie says, "and they really go wild when they realize this method

# A FABULOUS FAT FIX

helps them drop pounds and inches in no time at all."

### EMULSIFICATION LIQUEFIES FAT

"Take a hardened piece of butter and melt it in a warm oven, emulsification breaks down and liquefies the fat in your body in much the same way," says McCamie.

### BEAUTÉ OFFERS RESULTS

"My average client drops 2 or 3 dress sizes," McCamie says, "and yes, it can happen in just three weeks!"

**Call 475-9407 for a preview special, only \$50,  
and see how this program can work for you.**

# HISTORY

## 100 Years of Active Jewish Life in Delaware

Although there were Jews in Delaware from the seventeenth century days of Dutch settlement, Judaism did not flourish in very early Delaware, and by 1840, it appears to have been nonexistent. Not until 1879, when the Moses Montefiore Mutual Aid Society was organized, did Delaware have a permanent Jewish institution. Therefore, Delaware became the last of the original thirteen states to have an organized Jewish community and worship services for the High Holidays. In 1879, Wilmington had a Jewish population of some 25 families, most engaged in retail businesses. A small number of Jewish retailers lived in Dover, Smyrna and Milford.

Between 1880 and 1910, the Jewish population of Wilmington grew tremendously as East European immigrants found their way here. In just 30 years, the Jewish population of Wilmington expanded to more than 400 families.

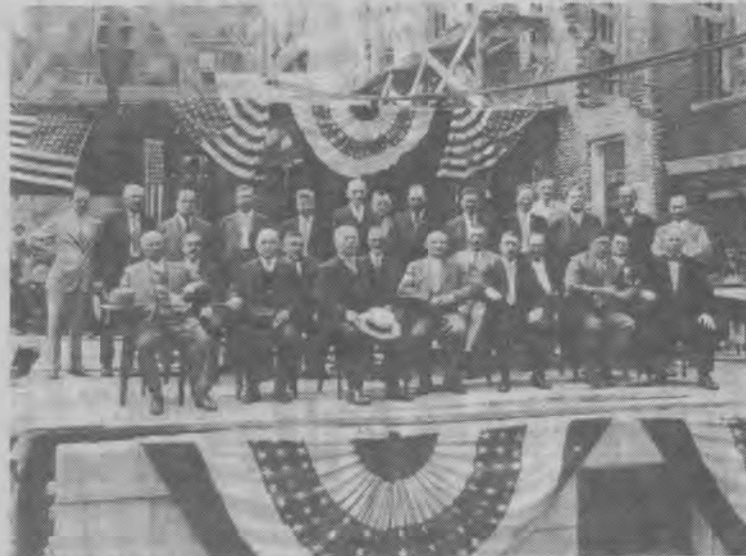
The influx of struggling immigrants, primarily merchants and peddlers, spurred the formation of many service organizations. Between 1899 and 1902, three of today's primary institutions were founded to offer assistance to the new arrivals. The Hebrew Charity Association, today's Jewish Family Service, was founded in 1899; The Young Men's Hebrew Association,

today's JCC, in 1901; and the Bichor Cholem, today's Kutz Home, in 1902.

The immigrants also established several synagogues to meet their differing religious expectations. Three of the early synagogues survived: Adas Kodesch, founded in 1885; Chesed Shel Emeth, founded in 1901, merged with Adas Kodesch in 1957; and Beth Emeth, founded in 1906.

Although Wilmington had the largest concentration of Jews in the state, Jews continued to live in Kent and Sussex Counties. By the early twentieth century, Dover, Lewes, Smyrna, Felton, Laurel, Georgetown, Millsboro, and Seaford had some Jewish retailers, peddlers, canners, distillers or hotelkeepers. The first Jewish farmers arrived in Viola in 1897 and 1900. With support from the Jewish Agriculture Society, 25 Jewish families settled on Delaware farms between 1912 and 1929. Jewish immigrants also entered farm-related businesses — livestock, poultry, and farm supplies.

No Jewish organization existed downstate until 1916, when the short-lived Jewish Farmers Association was established. Religious services were held informally, in individual homes, until 1939 when the Jewish Congregation of Lower Delaware, today's Congregation



Community members attending a ceremony to lay the cornerstone of the Adas Kodesch synagogue in downtown Wilmington, in 1927.

Beth Shalom, was incorporated.

During the first three decades of the twentieth century, the Jewish community of Wilmington grew rapidly, and by 1929, the population reached 3935.

But the community became increasingly fragmented. A fourth synagogue, Congregation Beth Shalom, was established in 1922. By 1929, there were more than 20 Jewish organizations, often working at cross purposes. Attempts to

unite the community were unsuccessful until 1935 when the Jewish Federation was established as a representative body of Wilmington's Jewry. In the following decades, the Federation's role was expanded statewide.

A few Jews attended the University of Delaware before the turn of the century, but Jews do not appear to have settled in Newark until early in this century. The Newark Jewish community, today's Temple Beth

EI, was formed in 1954.

Throughout this century, the majority of Jews continued to live in Wilmington. Between 1929 and 1945 the Wilmington Jewish community increased 60 percent, to 6,156 people. Only an estimated 80 Jewish families lived in Lower Delaware in 1945. By 1974, the Jewish population of Delaware was 9000 with 96 percent in Northern Delaware. In the last decade, there has not been a significant increase in the Jewish population, which is estimated at 9300 today.

In this brief introduction, it is not possible to name all the people who have distinguished themselves in the 100 years of active Jewish life in Delaware. Suffice it to say that Jews have held high positions and made significant contributions in numerous fields, including law, business, government, medicine, farming, and journalism.

The Jewish Historical Society of Delaware continues to collect and preserve information on Delaware Jews. The archives of the JHSD are available to all who wish to know more about the rich Jewish heritage in Delaware.

(This introduction is based on material at the Jewish Historical Society of Delaware and on as yet unpublished work by Charles Salkin and Toni Young.)

# WORLD CLASS ShopRite

DELAWARE'S KOSHER SERVICE DELI  
Complete with Smoked Fish, Cold Cuts  
and Party Platter Service  
For All Occasions.

WE CARRY A COMPLETE LINE OF

- |                 |                     |
|-----------------|---------------------|
| EMPIRE KOSHER   | SHOFAR              |
| HEBREW NATIONAL | HOROWITZ MARGARETEN |
| MANISCHEWITZ    |                     |

For Special Order  
Platter Service  
Call Our Deli  
999-1227



FIRST STATE PLAZA  
1600 Newport Pike  
Stanton, DE  
OPEN 24 HOURS



## Harris Jewelers Presents PIERRE CARDIN WATCHES

Affordable Sophistication™  
by  
**pierre cardin**  
Couture  
FINE WATCHES

The 8th Top Luxury Brand in  
The United States\* offers  
60 Exclusive Ladies and Gents Designs  
Retailing from \$165.00.

\*Based on 1989 Wall Street Journal Poll

### HARRIS JEWELERS

309 Branmar Plaza  
1812 Marsh Road  
Wilmington, DE 19810  
Phone: 475-3101

4377 Kirkwood Hwy.  
Kirkwood Plaza  
Wilmington, DE 19808  
Phone: 999-9901

Market Street Mall  
824 Market Street  
Wilmington, DE 19801  
Phone: 655-6253

Jewelers



Gemologists

# NEWCOMERS

WOMEN'S DIVISION OF THE  
JEWISH FEDERATION OF DELAWARE

WOULD LIKE TO WELCOME YOU  
PERSONALLY TO THE COMMUNITY

IF YOU ARE NEW TO THE COMMUNITY,  
OR KNOW OF A NEWCOMER,

PLEASE CALL LELAINE NEMSER  
AT THE OFFICE OF  
JEWISH FEDERATION OF DELAWARE:

**478-6200**

creative  
cooking

branmar plaza  
475-0390  
christiana  
mall  
366-7484  
powder mill  
square  
654-9012

"WE SELL THE BEST AND  
REPAIR THE REST"

## HENRY'S BICYCLE SHOP

SINCE 1946

MECHANICS ALWAYS  
ON DUTY

**\$5.00 off** with this ad  
Any purchase over \$50.00

2901 Lancaster Ave.  
654-0361 • 571-0517

## CALL US FIRST!

### HAPPY HARRY'S HOME HEALTH CARE CENTER

EMERGENCY SERVICE  
(302) 654-3019

24  
HOURS

IN-HOME  
EQUIPMENT PROGRAMS

- RESPIRATORY
- REHABILITATION AIDS
- DIABETES MONITORING
- PAIN CONTROL DEVICES
- OSTOMY SUPPLIES
- ORTHOTICS • HOSIERY

—PLUS—  
COMPLETE ENTERAL AND  
I.V. SYSTEMS WHICH INCLUDE  
CHEMO AND ANTIBIOTIC THERAPY

**Phone (302) 654-3019**

- FREE IN-HOME EVALUATION
- FREE DELIVERY AND SET-UP
- WE BILL MEDICARE AND ALL  
MAJOR INSURANCE COMPANIES

HOME HEALTH CARE SERVICE

EVERYTHING FOR YOUR  
16-A TROLLEY SQUARE  
ALSO AVAILABLE AT ALL HAPPY HARRY DISCOUNT DRUG STORES!

FAMILY'S GOOD HEALTH  
WILMINGTON, DE 19806

## CONGREGATION BETH EMETH IS...

*"Beth Emeth has been a central part of my life for nearly half a century. What the Congregation has represented to me and my family is best expressed in the stone inscription on the front of the building: 'Do Justly, Love Mercy and Walk Humbly with Thy god'"*

**Chief Justice Daniel Herrmann (Ret.)**

## ONE FAMILY...

*"Beth Emeth has nurtured and sustained our family for over three decades. It's a way of life..a second home."*

**Leon and Betty Chambers**

## GROWING TOGETHER...

*"I experienced the religious inspiration and welcome of Beth Emeth as my parents' son. Now, as a father, I am so pleased to know that my 4-month old daughter will grow up in the same Congregation that helped shape my life."*

**Daniel Kreshtool**

## BUILDING TOGETHER...

- We've added a new Education Wing
- We've added a new Assistant Rabbi & Director of Religious Education
- Our Membership has surpassed 700 families.

**WON'T YOU MAKE BETH EMETH PART OF YOUR FAMILY?**

Peter H. Grumbacher, Rabbi  
Lawrence Isakoff, President  
Sarah Messinger, Asst. Rabbi

Verna Schenker, Membership  
Harry Wolpert, Membership

Congregation Beth Emeth  
300 W. Lea Blvd.  
Wilmington, DE 19802  
(302) 764-2393

## "Hear Ye - Hear Ye"

We're the only tobacconist in Delaware  
Open 7 Days a week to serve you!

**TOLL FREE**  
Outside Wilmington Metro Area  
**800-695-6100**

*"Often Imitated - Never Duplicated!"*

## THE SMOKE SHOP

CIGARS • GLOBES & MAPS • GOURMET CANDIES  
TEAS • GOURMET COFFEES  
CARLTON CARDS • FOREIGN LANGUAGE NEWSPAPERS

DELAWARE AVE., at DuPont St., Wilmington, Del. • VISA HOURS

• WHOLESALE (302) 655-2861 (215) 358-1324 • M/C 6:30 A.M.  
• RETAIL • WSFS TO  
• MAIL ORDER Call Toll Free 1-800-695-6100 • A/E 9 P.M.

## The LORELTON

Comfortable Senior Living  
With A Personal Touch

**E**njoy the peace of mind that comes from knowing your senior family members are enjoying The Lorelton lifestyle!

- Short and Long Term Occupancy
- Furnished & Unfurnished Apartments
- Meals, Transportation and Activities
- 24-Hour Emergency Response
- Warm Supportive Environment

Comfort • Convenience • Security

**For More Information  
Call 573-3580**

2200 WEST FOURTH • WILMINGTON, DELAWARE 19805

# THE JEWISH FEDERATION OF DELAWARE

101 Garden of Eden Road, Wilmington, Delaware 19803  
478-6200

President - William M. Topkis Executive Vice President - Robert N. Kerbel

The Jewish Federation acts as the umbrella and coordinating organization of the Delaware Jewish community which consists of more than 30 local, national and overseas Jewish agencies and organizations. The Federation is the major budgeting, planning and fund raising body for the Jewish community, providing funds to local, national and global Jewish organizations. The Federation operates through a volunteer board of directors and more than 250 men and women serving on 20 different committees.

As the coordinator of community activities, the Federation sponsors the Jewish Community Relations Committee, the Endowment Fund, Leadership Development, Women's Division, educational projects and the annual Campaign.

### The Campaign

Through the annual Federation campaign led by hundreds of volun-

teers, funds are raised to benefit health, welfare, educational, humanitarian, and cultural services provided in Delaware, the U.S., Israel, and the world over.

The local beneficiary agencies of the Jewish Federation of Delaware Campaign include The Jewish Voice, Albert Einstein Academy, Gratz Hebrew High School, Hillel at the University of Delaware, the Jewish Community Center, Jewish Family Service, the Milton and Hattie Kutz Nursing Home, the Newark Advisory Committee, the Lower Delaware Advisory Committee, and the KiTov and Judaic Workshop programs for educationally handicapped Jewish children and young adults.

### The Allocations Process

Through volunteer involvement, requests are presented by more than 40 social services agencies and

organizations for an allocation from the funds raised through the Jewish Federation of Delaware Campaign. Decisions are based on the financial need and the types of programs being offered. In addition to the JFD's local beneficiary agencies, the Jewish Federation supports agencies such as United Jewish Appeal which provides vital services in Israel, and national organizations such as the Anti-Defamation League, which combats anti-Semitism throughout the U.S. (See allocations breakdown on this page.)

### How To Be A Federation Volunteer

Since the Federation relies upon the support of volunteers and contributors, there are many opportunities available for interested volunteers. A Young Leadership Program is open to all young adults of Delaware interested in participating in

many different aspects of the organized Jewish Community of Delaware. This group offers events, meetings, trips, etc., designed with a Jewish accent, such as a lunch meeting with a local politician, or participation in a national conference with more than 2500 young adult delegates. Under the auspices of the Jewish Community Center, a similar program is offered to Young Jewish Single Adults.

The committees of the Federation are always in search of new volunteers. To find out which committees might appeal to you, please contact the Federation.

### How To Be A

### Federation Contributor

During the annual telephone Campaign every Jewish adult is encouraged to fulfill the concept of *tzedakah* by making an appropriate contribution.

### Women's Division

The Women's Division of Federation, in addition to playing a major part in the annual Campaign, provides educational programs, coordinates the Jewish community calendar and welcomes all Jewish newcomers to Delaware.

### JIFFY

A new service, JIFFY (Jewish Information Fast For You), an information and referral service, is now available through a direct service provided through the Jewish Federation. Information is available regarding most Jewish-related questions, problems and concerns such as where to find pre-school care programs or how to have kosher meat delivered. There is no charge and lines are available Monday through Friday, 9 a.m.-4 p.m. In northern Delaware, call 478-6200; in the Dover area, call toll free, 678-0772.

## THE JEWISH VOICE

478-6200

Editorial Committee Chairman - Susan Paikin

Editor - Paula Berengut

*The Jewish Voice* is the only Jewish newspaper in the State of Delaware. The *Voice* provides news and analysis of local, national and international issues, with special attention paid to the political, economic, religious and social life of the State of Israel. There are always two pages of opinions on a variety of topics.

Regular features of *The Jewish Voice* include a Jewish version of Dear Abby called "Dear Rachel" (a service of Jewish Family Service), a Dvar Torah

column, book and movie reviews, a Jewish genealogy column and a travel column. Local Jewish community announcements and events are listed in every issue.

Special holiday issues are published at Rosh Hashanah, Hanukkah and Passover. Advertising supplements include this Newcomers' Guide, a Bridal/Party Guide, Back To School and Women in Business, among others.

*The Jewish Voice* is published by the Jewish Federation of Delaware and is overseen by an Editorial Committee.

## JCRC

478-6200

Director - Lelaine Nemser

Chairman - Robert Coonin

The purpose of the Jewish Community Relations Committee of the Jewish Federation is:

- 1) To interpret Israel's position and needs to the American public and government;
- 2) To marshal public opinion on behalf of justice and freedom for Soviet Jews in Arab lands;
- 3) To counteract anti-Jewish activities and significant manifestation of insensitivities to Jewish concerns;
- 4) To educate the Jewish community and the general community about the lessons of the Holocaust;
- 5) To help assure a climate which permits the Jewish population to participate fully in the general life of the community and which fosters creative survival of Jewish values and religious heritage. This can

happen only when all groups are accorded equal opportunity, equal rights and equal justice, and through the promotion for the democratic system by working with community coalitions and organizations, both within and outside the Jewish community.

The Jewish Community Relations Committee operates through a steering committee of representatives of Jewish organizations and synagogues. Its work is accomplished through volunteer task forces and committees. There are currently five such task forces: Israel, Soviet Jewry, Interfaith, Domestic Concerns and the Halina Wind Preston Holocaust Education Committee. In addition, a branch of JCRC exists in

Lower Delaware.

Our Jewish Community Relations Committee is active in the National Jewish Community Relations Advisory Council (NJCRAC) which consists of 11 national and 114 community Jewish organizations. NJCRAC focuses on issues of concern to the Jewish community and educates on the positions to take on them as well as how to carry out those positions most effectively. Through a national planning process, NJCRAC produces an annual Joint Program plan designed to serve as an advisory guide by member agencies such as ours. Local community relations organizations are free to accept, reject or modify the Plan's recommendations according to local needs and preferences.

## ENDOWMENT FUND

478-6200

Director - Connie Kreshtool

The Board of Directors of the Jewish Federation of Delaware established the Jewish Community of Delaware Endowment Fund to insure that educational, religious and social services are always available to the Jewish community. The Endowment Fund offers donors the opportunity to endow a service or institution of special interest to them. Such gifts provide a lasting legacy for the community and record the names of the contributors in perpetuity.

Donors may choose to make their gifts in the form of a charitable trust, a Philanthropic Fund, a restricted

fund or an unrestricted fund or through the Federation Pooled Income Fund or other endowment vehicles which best serve their charitable interests and tax status. Contributors may donate cash, securities, real estate, life insurance, State of Israel bonds or other property.

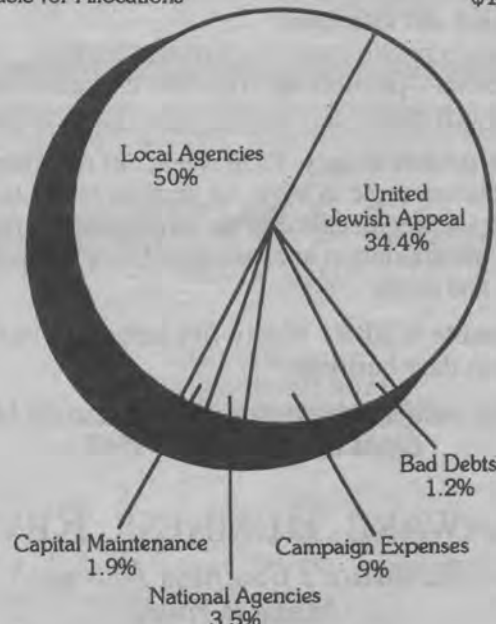
Bequests and lifetime gifts to the Endowment Fund help to strengthen the institutions in our community that transmit Jewish values and preserve our Jewish heritage.

## JFD Allocations

	1990 Recommended Allocations	Interim Allocations
<b>Local Agencies &amp; Programs</b>		
Albert Einstein Academy	33,500.	31,155.
Delaware Gratz Hebrew High School	31,490.	29,286.
Hillel Counselorship - U of DE	29,700.	27,621.
Jewish Community Center	100,000.	93,000.
Jewish Family Service	31,000.	28,830.
Judaic Workshop	1,179.	1,096.
Ki Tov	1,468.	1,365.
Milton & Hattie Kutz Home	185,000.	172,050.
Lower Delaware Coordinating Committee	5,400.	5,022.
Newark Coordinating Committee	4,750.	4,418.
Jewish Voice	24,000.	22,320.
Jewish Community Relations Committee	5,840.	5,431.
Jewish Federation - Administration, Programs & Campaign	320,000.	297,600.
Endowment Fund	10,000.	9,300.
Youth Services Task Force		
Sub Total - Local	783,327.	728,494.
National & Overseas Agencies	46,185.	42,952.
United Jewish Appeal	450,000.	418,500.
Capital Maintenance	25,000.	23,250.
<b>TOTAL</b>	<b>\$1,304,512.</b>	<b>\$1,213,196.</b>

### 1990 CAMPAIGN RECAPITULATION (As of 9/6/90)

Campaign Achievement	1,217,725
Campaign Shrinkage	15,000.
Balance for Allocation	1,202,725
Unused Allocations	11,000.
<b>Total Available for Allocations</b>	<b>\$1,213,725.</b>



# Why do Smart Kids Fail?



Your child may be smarter than his grades show. Our certified teachers can help your child discover the priceless gift of learning.

- 4 Reasons for Failure
- weak basic skills
  - frustrated with school
  - lack of confidence
  - no motivation

A few hours a week can help your child gain the Educational Edge\* and see how much fun learning really is. Our testing pinpoints problems and we tutor in reading, phonics study skills, math and SAT prep to help students in all grades do better in school.

**THE HUNTINGTON LEARNING CENTER®**

Drummond Plaza Office Park  
Building 3, Suite 3202  
Kirkwood Hwy. & Polly Drummond Hill Rd.  
Newark, Delaware 19711  
Tel: 737-1050

© 1987 Huntington Learning Centers, Inc.

## PHILIP BERGER

Associate Broker



OFF.: 302-478-3800  
RES.: 302-764-8384

Professional, competent real estate service since 1969



### Women in business special report inside

### Real Estate listing guide inside

### Executive Retirement section inside

## DELAWARE BUSINESS REVIEW

Volume 12 Number 19 • May 14, 20, 1990 • \$4.25

Are you interested in the people who make Delaware go and grow?  
Do you want to grow with them?

If so, you need DELAWARE BUSINESS REVIEW.

Every week, we publish the most complete package of business news available in the First State. Each issue features:

- News and trends about business in Delaware.
- Real estate and development updates.
- New businesses, expansions, property transfers, bankruptcies and other vital data.
- Investment and loan rates.
- Opinions on public issues by business leaders.
- People news—promotions, transfers, executive hires.
- Much, much more.

DBR also probes deeply. Each week, our reporters focus on an important topic in a special section. Subjects range from computers to healthcare, the environment to small business, transportation to challenges facing women in business, and more.

How valuable is DBR? Ninety-five percent of our readers use DBR in their business.

For a free sample subscription, call Circulation Manager Linda Huffaker at 998-9580.

**DELAWARE BUSINESS REVIEW**  
*Delaware's Business Journal*  
—Make it Yours.

# JEWISH HOLIDAYS

**\*Shabbat:** Every week, from sundown Friday until sundown Saturday. The Sabbath, known as the most important holiday, commemorates God's day of rest on the seventh day of Creation.



**Hanukkah:** Dec. 12-19, 1990. In 179 BCE, the Maccabees led a band of Jews in battle against invading pagan warriors who had desecrated the Temple. When the Maccabees regained Jerusalem, they found only enough oil to last one day in the Temple's eternal light. Miraculously, the oil lasted eight days, until more could be found. The Hanukkah menorah is lit for eight nights to celebrate that miracle. Children play dreidle, and foods fried in oil are customary. Hanukkah was declared a holiday by Judas Maccabee and his followers to celebrate the rededication of the Temple.

**Tu B'Shevat:** Jan. 30, 1991. This holiday, the New Year of the Trees, marks the coming of spring in Israel. It is celebrated by having picnics, planting trees and eating fruit.

**Purim:** Feb. 28, 1991. The Feast of Lots recalls the rescue of the Jews of Ancient Persia from annihilation at the hands of Haman, who cast lots to choose this day for his plot. Queen Esther and her cousin, Mordechai, foiled his plan. On Purim, the Megillah of Esther is read, and the holiday is celebrated with riotous festivity, costumes and noisemakers. Hamantashen (three-cornered pastries) are the traditional food, and "misloach manot" (gift packages) are exchanged.

**\*Passover:** March 30-April 6, 1991. The Exodus of the Jews from Egypt is celebrated with the eight-day festival of Passover. Ridding the home of "chometz" (leavened food) and eating only unleavened items commemorate the haste in which

the former slaves fled Egypt, leaving them too little time for their bread dough to rise. Jews traditionally give "maot chitim" (charitable contributions) to the poor at Passover and invite others to join their seders.

**Yom Hashoa:** April 11, 1991. The day is marked by memorials and dedications to those who perished in the Holocaust.

**Yom Ha'atzmaut:** April 19, 1991. Israel Independence Day is celebrated festively by Jews around the world.

**Lag B'Omer:** May 2, 1991. This holiday is a tribute to Jewish martyrs and mystics. Children parade as soldiers to commemorate the Bar Kochba Rebellion, and synagogues are decorated with candles.



**\*Shavuot:** May 19-20, 1991. Shavuot marks the end of the counting of omer. It recalls Moses' receiving the Torah from God. The Megillah of Ruth is read, and all-night Torah study is customary. Confirmation ceremonies, dairy foods, honey and floral decorations are traditional.

**Tisha B'Av:** July 21, 1991. This solemn holiday is a reminder of the destruction of the first and second Temples and the loss of the Jewish State to the Romans. Lamentations is read, and it is traditional to fast.

**\*Rosh Hashanah:** Sept. 9-10, 1991. Literally meaning "head of the year," Rosh Hashanah marks the beginning of the Jewish calendar year. It begins a 10-day period of repentance and prayer which ends on Yom Kippur. The holiday is celebrated with feasts and apples dipped in honey to symbolize the hope for a sweet year to come.



**\*Yom Kippur:** Sept. 18, 1991. The Day of Atonement is the holiest day of the Jewish calendar, marking the end of the 10 days of repentance. It is spent fasting and in fervent prayer. Sounding of the shofar signals the end of the holiday.

**\*Sukkot:** Sept. 23-24, 1991. The harvest festival, or Feast of Tabernacles, is named for the temporary dwellings, decorated with fruit and vegetables, set up to recall the booths in which the Jews lived during their journey from Egypt. The holiday is also marked by processions with the lulav (palm branch with myrtle and willow) and etrog.



**\*Simchat Torah:** Oct. 1, 1991. The last day of Sukkot, Simchat Torah marks the end of the annual Torah reading and the beginning of the cycle for the coming year. The holiday is celebrated with singing, dancing and merry processions of men carrying Torahs and children waving flags.

**Note:** Holidays begin at sundown of the previous day.  
\*Work is restricted.

## FOR ALL YOUR REAL ESTATE NEEDS



Marvin Sachs  
27 years experience  
in New Castle  
County real estate

- Residential
- Commercial
- Property Management
- Consulting

**CITY SYSTEMS REALTORS**  
655-9914

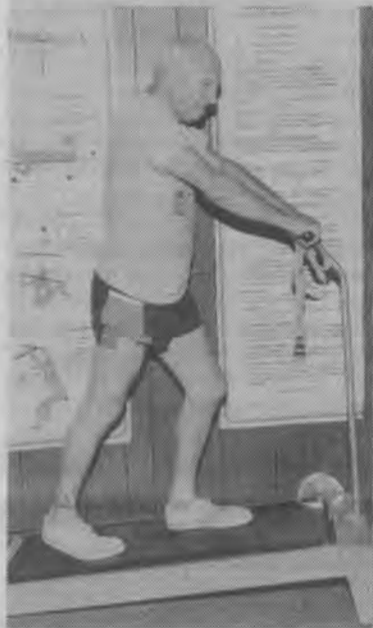
# JEWISH COMMUNITY CENTER

101 Garden of Eden Road, Wilmington, Delaware 19803  
478-5660

President - Richard David Levin Executive Director - David H. Sorkin

The Jewish Community Center (JCC), is a non-profit membership organization which provides the Delaware Jewish community with diverse and extensive services. The Center provides its members and the entire community with a central place in which individuals, families, groups or organizations can best express their interests and have their social, education, cultural or recreational needs met.

The Center offers Jewish educational programs, holiday celebrations, cultural and arts programs, plus a wide array of services listed



below. The Jewish Community Center is partly funded by the Jewish Federation of Delaware, the United Way of Delaware and is affiliated with JCCA (Jewish Community Centers Association of America). In addition, the Jewish Community Center offers its facilities to an ever-enlarging number of Jewish organizations who use its building for their programs and services.

### JEWISH FAMILY CAMPUS

- ☆ 6,000 square foot outdoor swimming pool and toddler pool
- ☆ Four tennis courts
- ☆ Outdoor sports fields (basketball, softball, soccer and football)
- ☆ Large picnic areas with tables and cooking facilities
- ☆ A scenic nature park, adjacent to the Brandywine Creek State Park
- ☆ A crafts and nature center for enjoyable educational activities
- ☆ An outdoor amphitheatre with concerts and productions of community interest
- ☆ Sand volleyball pit
- ☆ Horseshoe pit
- ☆ A variety of family and children's activities

### HEALTH AND FITNESS CENTER

- ☆ Five lane indoor swimming pool
- ☆ Adapted aquatic facility (hand-capped accessible)
- ☆ Full court gymnasium
- ☆ Fitness center and free weight room
- ☆ Three racquetball courts
- ☆ Steam and sauna rooms
- ☆ Therapeutic whirlpool
- ☆ Fitness and aquatic classes for all ages
- ☆ Free aerobic classes for members

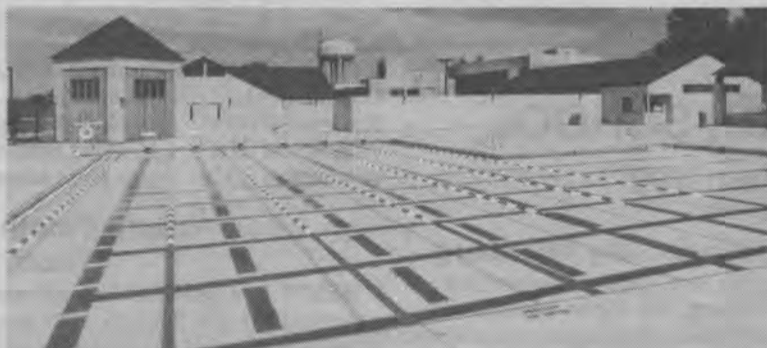
### SENIOR CENTER

The JCC's Senior Center operates five days per week and is open to anyone age 60 or over.

- ☆ Congenial, nutritious, Kosher, balanced lunches served Monday through Friday
- ☆ Outreach services
- ☆ Family life discussions
- ☆ Current event seminars
- ☆ Senior center choral group
- ☆ Jewish holiday celebrations and special events
- ☆ Painting class
- ☆ Jewish enrichment programs and Shabbat discussions
- ☆ Swimming and physical fitness classes
- ☆ Wellness educational series
- ☆ Israel-oriented programs
- ☆ Trips
- ☆ Birthday parties
- ☆ Card games
- ☆ Monthly news bulletin
- ☆ Transportation to and from the JCC on weekdays

### ADULT SERVICES

- ☆ Finance seminars
- ☆ Jewish education programs
- ☆ Jewish Great Books Discussion Group
- ☆ Day trips to theatres and museums
- ☆ Yom Ha'atzmaut and holiday celebrations
- ☆ Art gallery exhibitions
- ☆ A variety of classes and adult club groups
- ☆ Special groups
- ☆ Sunday morning brunch and lectures



### YOUNG JEWISH ADULTS OF DELAWARE

The Young Jewish Adults of Delaware (YJAD) is designed for Jewish singles who are between the ages of 21 and 35. YJAD offers a variety of programs and activities created for young Jewish singles.

- ☆ Jewish education programs
- ☆ Chavurah discussion groups
- ☆ Trips
- ☆ Dinner parties
- ☆ Swim parties
- ☆ Socials
- ☆ Leadership training seminars
- ☆ Shabbat services
- ☆ Recreational activities
- ☆ Jewish holiday programs

### TEENS OF DELAWARE

- ☆ College caravans
- ☆ Ski trips
- ☆ Bowling and skating parties
- ☆ Yearly musical production
- ☆ Sporting events
- ☆ Teen and Junior Teen Councils
- ☆ One-day trips
- ☆ Extended overnight programs
- ☆ Jewish holiday programs

- ☆ Dances, pool parties and activities
- ☆ Teen and C.I.T. camping programs
- ☆ SAT college prep program
- ☆ Babysitting courses
- ☆ Awareness seminars
- ☆ Making new friends and much more

### CHILDREN'S SERVICES

The Children's Services Department at the JCC offers a variety of programs and activities for children in kindergarten through 6th grade.

- ☆ After school childcare for kindergarten through 6th grade children (Kidsplace Program)
- ☆ "School's out days" (School vacation programs)
- ☆ Youth theatre classes
- ☆ Teen connection programs
- ☆ Fitness and aquatic classes
- ☆ Cultural and holiday programs
- ☆ Clubs and groups for children
- ☆ Birthday party celebrations

### EARLY CHILDHOOD SERVICES

The Early Childhood Services Department provides age-appropriate learning experiences in an atmosphere based on mutual respect and Jewish values. Academic interests are integrated into the Jewish year through holiday celebrations, Hebrew language, exposure to Israeli culture, dance and music.

- ☆ Pre-school programs
- ☆ Full-service day care programs
- ☆ Toddler's play
- ☆ Kindergarten enrichment
- ☆ Drop-in babysitting service
- ☆ Lunch bunch and swim programs

### JCC DAY CAMP

- ☆ Music and ballet classes
  - ☆ Parenting education seminars
  - ☆ Day camp speciality weeks
  - ☆ Early morning and late afternoon extended hours
  - ☆ Transportation to and from camp on a daily basis
  - ☆ Cookouts, theme days and overnights
  - ☆ Traveling teen camp
  - ☆ Clubs for first through 6th graders
  - ☆ Sports (soccer, hockey, basketball, baseball, racquetball, tennis, archery)
  - ☆ Arts and crafts
  - ☆ Recreational and instructional swim programs
  - ☆ Multi-media arts activities (theatre, creative dramatics)
  - ☆ Exclusive access to the Brandywine Creek State Park
- The Jewish Community Center is open approximately eighty-eight hours per week to accommodate different lifestyles. For additional information, visit the JCC at 101 Garden of Eden Road, just off Route 202. Or call 478-5660.



## Join Wilmington's CONSERVATIVE Synagogue!

- Worship with us during the holidays and sabbath
- Meet new people & enjoy our many social activities
- Provide your children with a sound religious school education

And, if you're a newcomer to Wilmington, receive your 1st year's membership FREE!

HERBERT A. YOSKOWITZ - RABBI  
NORMAN P. SWERLING - CANTOR  
ANDREW SALZER - CANTOR EMERITUS  
ARLENE S. DAVIS - EDUCATIONAL DIRECTOR  
FRANCES A. STEIN - EXECUTIVE DIRECTOR  
JEROME K. GROSSMAN - PRESIDENT

## CONGREGATION BETH SHALOM



Eighteenth Street and Baynard Boulevard  
Wilmington, Delaware 19802  
(302) 654-4462

## GUS REISSMAN & BRO. CO.

Insurance

4 THE COMMONS  
3510 SILVERSIDE ROAD  
WILMINGTON, DELAWARE 19810

TELEPHONE  
DEL. (302) 478-3727  
PA. (215) 724-5772

ASHER RUBIN

## EDUCATION

### JEWISH COMMUNITY CENTER EARLY CHILDHOOD SERVICES AND CHILDREN'S SERVICES

101 Garden of Eden Road, Wilmington, Delaware 19803

Telephone Number: (302) 478-5600

Early Childhood Services: Michelle Margules, Myrna Ryder, Co-Chairpersons

Early Childhood Services Director - Jane Hormadaly

Children's Services: Susan Gleich, Rona Caplan, Co-Chairpersons

Children's Services and Camp Director - J.J. Alter

#### Morning Pre-School Program (GAN)

9:00 - 11:30 a.m.

Two year olds through kindergarten:

This educational program helps

prepare children for school, while developing their Jewish identity. There is an excellent staff-to-child ratio. Children are exposed to hands on experiences which enhance language development, fine and gross motor skills, and mathemat-

ics. Activities include art, music, Jewish enrichment, outdoor play and snack.

#### Afternoon Recreational and Enrichment Programs (MAON)

11:30 a.m. - 5:45 p.m.

Three year olds through kindergarten

Maon includes a kosher lunch, a rest period and a variety of age-appropriate social and recreational activities such as arts and crafts, swimming, gym games and outdoor activities. Transportation from public kindergarten and optional enrichment classes are available at an additional fee.

#### Toddler's Play

12 months to 20 months:

This weekly program involves a parent and child to enjoy age-appropriate activities together. Activities include music, arts, storytime and play opportunities with other children.

#### Lunch Bunch Enrichment

This program offers moms an extra hour and a half off while their child has lunch and participates in a wide range of activities such as gymnastics, music, nature, art and drama. Additional enrichment classes are offered at different times as well.

#### Maon Yom

7:15 a.m. - 5:45 p.m.

Walking ones and two year olds:

A nurturing staff encourage an independence, early social skills and fine and gross motor activities. Language development is enhanced through stories and verbal interchange with staff. This age group meets in their own rooms and with their own staff.

Three and four year olds:

Morning pre-school programs along with afternoon enrichment activities are combined for these children.

#### Kidsplace

(After school care, snow day and school vacation programs) Kindergarten through 3rd grade or 4th through 6th grade:

Kidsplace means fun and your child can join our Kindergarten through 3rd grade or 4th through 6th grade programs. Activities include special interest clubs, swimming, gym, sports, outdoor fun and a homework room. A wide range of aquatic and fitness classes are available through the Recreational Services Division. Transportation, snacks, special vacation trips, snow day programs and much more with the active staff are also part of this program. Safe, reliable transportation is available during the school year. Transportation from selected schools to the Center, and from schools to area Hebrew schools is available for registered children in kindergarten through 6th grade. For additional information, call 478-5660.



### ALBERT EINSTEIN ACADEMY

101 Garden of Eden Road, Wilmington, DE 19803  
478-5026

Principal - Eleanor Weinglass

President - Dr. Avrene Brandt

The Albert Einstein Academy combines an excellent secular education with a rich background in Jewish traditions, Bible, history and Hebrew. In small classroom settings, this school combines the best of both worlds, the pursuit of academic excellence and a positive sense of Jewish identity. New students are welcome in all grades.

### DELAWARE GRATZ HEBREW HIGH SCHOOL

101 Garden of Eden Road, Wilmington, DE 19803  
478-5026

Principal - Elaine Friedberg

President - Dr. Jay Weisberg

Delaware Gratz provides a five year program of Jewish studies on a secondary level which includes Bible, Jewish history, ethics, issues, law and Hebrew literature and language utilizing the Ulpan method for conversational Hebrew.

Students are provided with the knowledge and enthusiasm that helps them to develop a positive Jewish identity, to have concern and responsibility toward fellow Jews and to counter the secularism and agnosticism that frequently permeate college campuses.

All Gratz teachers are certified and knowledgeable in their fields and have both talent and experience relating to adolescents.

High school and college credits as well as teaching certificates are granted to those who complete the curriculum.

Classes meet Sundays from 10 a.m. to 1 p.m. and Tuesdays and Thursdays, 7 p.m. to 9:10 p.m.

### The Judaic Workshop

The Judaic Workshop provides a Jewish educational experience to educationally exceptional young adults who have learning disabilities and who cannot be served by congregational religious schools. Presently housed at The Mary Campbell Center, a Jewish enrichment program is held every week for those who would not otherwise have any Jewish education. This program is financially supported by the Jewish Federation of Delaware. For more information contact Helen Gordon at 762-2705.

### Ki Tov Class

Ki Tov is a program for children who cannot be mainstreamed into regular afternoon class, but who also do not belong in the "Judaic Workshop for Exceptional Children." The children enrolled in this program are capable of learning about themselves as Jews and about Holidays, Bible and language, but must be taught in a small class setting using individualized instruction and attention. In the past, Jewish education for these children has been neglected. The program is financially supported by the Jewish Federation of Delaware. For more information contact Helen Gordon at 762-2705.

All Delaware synagogues except Machzikey Hadas have religious school programs. Contact the individual congregation for information about these religious schools.

## YOUTH GROUPS

### B'nai B'rith Youth Organization

BBYO is housed at the Jewish Community Center. AZA (boys) and BBG (girls) serves teens in 9th through 12th grades. This program provides area teens with a chance to develop leadership skills through participation in a variety of social, athletic, cultural, educational, religious activities and community service.

For more information about BBYO contact:

Dover BBYO	Joan Ellis	Staff	328-5511
Newark BBYO	Noel Pearlman	President	292-1530
Wilmington AZA	Craig Koniver	President	655-5308
Wilmington BBG	Allison Meyer	President	888-2060

### Beth Emeth Synagogue Youth Group

BESTY is a Mid-Atlantic Federation of Temple Youth which provides programs for 9th through 12th graders. The youth group helps teens develop leadership, meet new friends, participate in social, athletic, educational and religious activities. NIFTY is the national organization of the youth group. Regional and national conclaves are held throughout the year.

For more information about BESTY contact:

BESTY	9th thru 12th grades	Advisor for both groups is Rabbi Sarah Messinger	762-5858
BESTY Jrs.	7th & 8th grades		

### Kadima

Kadima is an international youth organization sponsored by the Department of Youth Activities of the United Synagogue of America. Geared towards grades 5 through 8, it offers each participant the chance to see that being Jewish and part of a synagogue can and does mean having a good time. The organization provides a number of social activities including field trips, overnights, community service activities and fundraisers.

Advisor: Linda Steinberg

475-6576

### B'nai B'rith Hillel

Chair of Advisory Committee - Dr. Vivian Klaff  
Director - Ruth Kershner, LCSW

B'nai B'rith Hillel has a presence on the University of Delaware campus 300 students strong. Currently they hold several activities a week, providing a mix of social, cultural, religious and educational programs. Programs include: bagel and lox brunches, Shabbat dinners, weekly Kabbalat Shabbat services, movie nights, trips to nearby cities, and Israel nights. In addition to regular events and programs, students this year were able to attend high holiday services on campus. Steady growth of this organization will soon necessitate a move to larger facilities.

For more information, call the Hillel office at 453-0479.



# CONGREGATIONS



**ADAS KODESCH SHEL EMETH**  
 (Traditional)  
 Washington Blvd. & Torah Way  
 Wilmington, DE 19802  
 762-2705  
 ☆☆☆  
 Rabbi: Nathan N. Schorr  
 Rabbi Emeritus: Leonard B. Gewirtz  
 Cantor: Morris Markowitz  
 President: Howard H. Simon

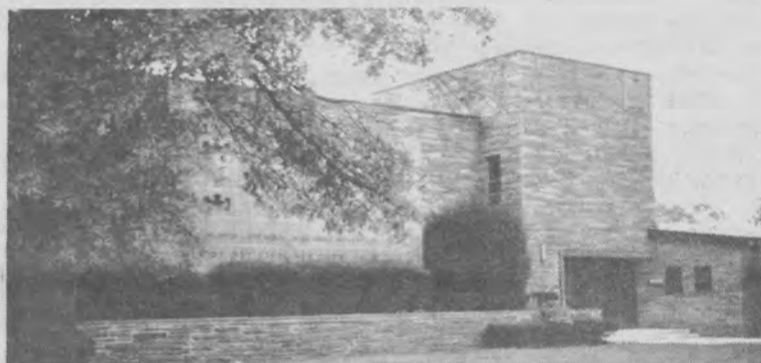


*Nathan N. Schorr*



*Rabbi Herbert Yoskowitz*

**CONGREGATION BETH SHALOM**  
 (Conservative)  
 18th & Baynard Blvd.  
 Wilmington, DE 19802  
 654-4462  
 ☆☆☆  
 Rabbi: Herbert Yoskowitz  
 Cantor: Norman Swerling  
 President: Jerome Grossman



**CONGREGATION BETH EMETH**  
 (Reform)  
 300 West Lea Blvd.  
 Wilmington, DE 19802  
 764-2393  
 ☆☆☆  
 Rabbi: Peter Grumbacher  
 Assistant Rabbi: Sarah Messinger  
 Rabbi Emeritus: Herbert E. Drooz  
 President: Lawrence Isakoff

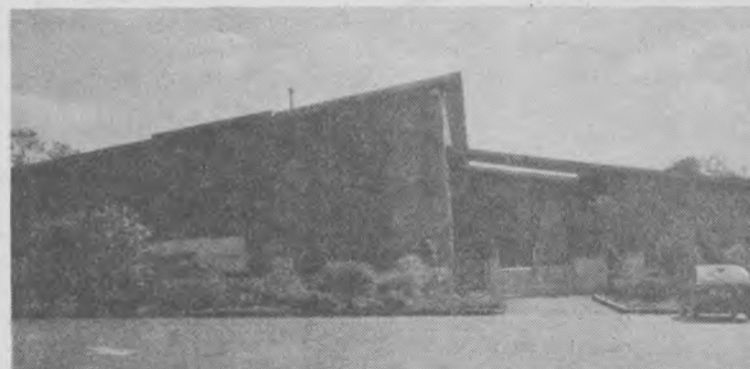


*Rabbi Peter Grumbacher*

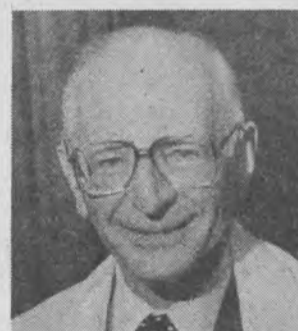


*Rabbi David Kaplan*

**TEMPLE BETH EL**  
 (Reconstructionist)  
 301 Possum Park Road  
 Newark, DE 19711  
 366-8330  
 ☆☆☆  
 Rabbi: David Kaplan  
 President: Robert Gelman



**BETH SHOLOM CONGREGATION**  
 (Conservative)  
 Queen & Clara Streets  
 Dover, DE 19901  
 734-5578  
 ☆☆☆  
 Rabbi: Moshe Goldblum  
 President: Helen Gelof



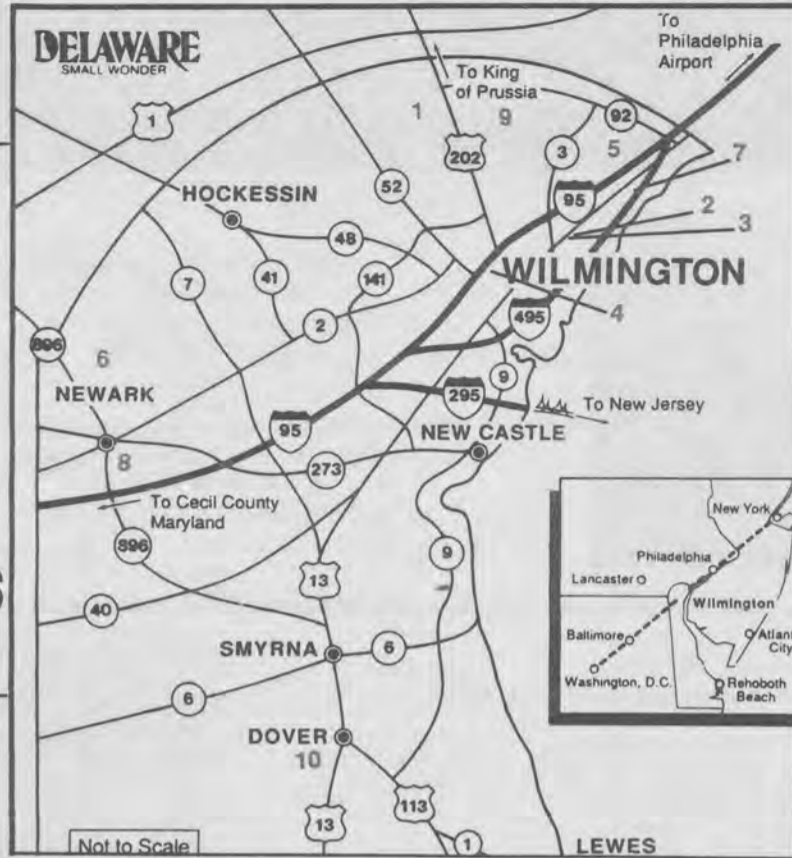
*Rabbi Moshe Goldblum*

For information regarding  
 \* Sisterhoods  
 \* Brotherhoods  
 \* Men's Clubs  
 \* Singles & Couples Groups  
 Contact the individual synagogues

**MACHZIKEY HADAS**  
 (Traditional)  
 B'nai B'rith Building  
 8000 Society Drive  
 Claymont, DE 19703  
 792-1545  
 ☆☆☆  
 Cantor: Marvin Zuckerman  
 President: Jacob Levine

**Delaware's  
 Synagogues Are Waiting  
 To Welcome You!**

# Locating Delaware's Jewish Organizations



## Map Key

- 1 - Jewish Federation of Delaware  
The Jewish Voice  
Jewish Community Center  
JCC Preschool  
Jewish Family Service  
Albert Einstein Academy  
Gratz Hebrew High School  
Jewish Family Campus
- 2 - Adas Kodesch Shei Emeth Congregation
- 3 - Beth Emeth Congregation
- 4 - Beth Shalom Congregation
- 5 - Machzikey Hadas Congregation  
B'nai B'rith House
- 6 - Temple Beth El
- 7 - Kutz Home
- 8 - Hillel  
Chabad House  
Alpha Epsilon Pi Fraternity
- 9 - Brandywine Country Club
- 10 - Congregation Beth Shalom



## 湖南 HUNAN INN

**Chinese Restaurant**

• Authentic CANTONESE, SZECHUAN and MANDARIN CUISINE

Weight Watching Specials  
Light & Delicious  
No MSG in our Dishes

• ELEGANT ATMOSPHERE  
LUNCH • DINNER • COCKTAILS  
★ BANQUET FACILITIES TO 65 ★

### 50% OFF

BUY 1 ENTREE AT REGULAR PRICE AND GET 2ND ENTREE OF EQUAL OR LESSER VALUE AT 50% OFF.  
EAT IN OR TAKE OUT  
ONE COUPON PER TABLE  
HUNAN COUPON EXP. 12/31/90  
8 BRANMAR PLAZA  
475-8301 or 475-8300

OPEN 7 DAYS

Mon.-Thurs.	11:30 - 10:00
Sat.-Fri.	11:30 - 11:00
Sunday	12:30 - 10:00

AMPLE PARKING  
TAKE-OUT SERVICE  
**475-8300**  
**475-8301**

8 BRANMAR PLAZA SHOPPING CTR. (Corner of Marsh & Silverside Rds.)  
WILMINGTON, DE



**GOURMET FOOD SHOPPE**

**GOURMET-TO-GO**  
Try Our Freshmade Hot Soups, Baked Brie & Quiches

- Caviar
- French Pates
- Asstd. Salads • Cheese
- Smoked Products
- Breads • Croissants
- Coffee
- Special Cakes
- Gift Baskets
- CATERING

**Complete Eat-In and Take-Out Menu**

Talleyville Shopping Center  
3629-D Silverside Road  
Wilmington, DE 19810-5101  
(302) 478-4344

## G'bibis

The new owners, George & Sandy, welcome you to G'bibis for fine dining at affordable prices.

*Enjoy fresh & exciting dishes within a romantic atmosphere.*

OPEN  
TUESDAY THRU FRIDAY  
LUNCH: 11:30-2:30  
TUESDAY THRU SATURDAY  
DINNER: 5:30-9:00  
FRI. & SAT. TIL 10:00

607 N. LINCOLN ST.  
WILMINGTON, DE  
302-658-3911

SUNDAY DINNER; 4:00 TIL 9:00

RESERVATIONS SUGGESTED • PROPER ATTIRE  
FREE PARKING CREDIT CARDS ACCEPTED  
YOUR HOSTS: GEORGE KESSARIS & SANDY INTORRE

Support  
Our  
Advertisers



restaurant

*Always the Freshest and Finest Seafood*

FISH • SHRIMP  
CRABMEAT  
SCALLOPS  
LOBSTERS • CLAMS

TAKE OUT OR EAT IN

Fresh Seafood  
Homemade Platters,  
Sandwiches

BRANMAR PLAZA  
Marsh & Silverside Roads  
(next door to TCBY)  
475-FISH 475-7000



## AQUARIUS

SPRING WATER INC.

- High Quality PURE Mountain Spring Water
- FREE Commercial and Residential Delivery
- Cooler Rental

*Great Prices, Great Service!*

**Andrew Taub**  
President

**Sylvan Taub**  
Secretary/Treasurer

41D Germay Drive • Wilmington, DE 19804  
302/654-3310 • FAX 302/654-4504



ristorante  
**MICHELANGELO**

*The Art of Italian Cuisine*

Friday & Saturday Night - Dinner Dancing  
Monday Night - 1/2 price entree for the ladies

Open under new ownership.  
Executive Chef - Mario La Rocca

1601 Concord Pike  
Independence Mall (Under the Clock Tower)  
Wilmington, Delaware

302.655.9595

.....  
**alfred carlis**  
 Distinctive Boys and  
 Girls Clothes  
 Infant to size 14  
**"The Gift You're  
 Proud of Giving"**  
 • Wardrobing  
 • FREE Gift Wrap  
 • Lay-a-way  
 • Mailing Available  
 111 West Ninth Street  
*all charge cards welcome*



**OUR SHOES SELL LIKE HOT CAKES**

*My Sister's Shoes*  
 ... anything but ordinary

1733 Marsh Road  
 (across from Gaylyn  
 Shopping Center)  
 Wilmington, DE 19810  
 478-7458

Visa/Mastercard  
 accepted  
 Open daily 10-5  
 Closed Sunday



**Intimate  
 Apparel  
 To Fit  
 Your  
 Lifestyle**

- BRAS • SHAPEWEAR
- BUSTIERS • STRAPLESS BRAS
- BRIDAL LINGERIE
- LOUNGEWEAR • SLEEPWEAR
- MASTECTOMY NEEDS

*Gifts of exquisite lingerie & boudoir  
 accessories for every lady in your  
 life.  
 Distinctive gift wrapping free with  
 purchase.*

**THE SILHOUETTE SHOP**

INDEPENDENCE MALL  
 WILMINGTON, DE (302) 654-1894



**BACK TO BASICS**  
**Tutoring Service, Inc.**  
 Serving Ages 4-Adult  
 In Your Home, Our Center,  
 or at School

Beverly S. Cox, M.Ed.  
 Owner/Director

**Degreed, Experienced Staff Offering:**

- Reading
- Basic Math
- Algebra/Geometry
- Trig./Calculus
- Biology
- Study Skills
- History
- Adult Literacy
- Physics/Chemistry
- Foreign Languages
- PSAT/SAT Prep.
- GED Prep.
- Spelling/Writing
- English
- ESL

**CALL (302) 594-0754** • 1-on-1 Instruction  
 1824 N. Scott St., Wilmington, DE • Serving 4 States

Invitations - Announcements  
 Stationery - Business & Social  
 Party Accessories  
 Personalized Items, Etc.



"The Finest Selection  
 of Exclusive Papers  
 and Gifts"

Serving the Community for 25 years

*Charlotte Fischer 656-8604*

**Village Perfumes**  
 Welcome! Jean Patou's 'Ma Liberté

Eau de Toilette Splash      Eau de Toilette Spray  
 1.7 oz. - \$32                      1.7 oz. - \$37

Unusual and hard-to-find perfumes.  
 Discounts Available

**2207 Market St.      10-5 Tues.-Sat.      656-5229**

**JEWISH INTRODUCTIONS INTERNATIONAL**  
 Delaware's local, innovative & personalized  
 Jewish Introductions Service.  
 Ages 21-101  
**Let us find That Special Someone**  
 In Delaware Call  
**1-800-442-9050**      102 Centers to Serve You Across North America



Authorized Ticket Agency  
 For The Delaware Valley

**B & B**  
**tickettown**

322 NINTH ST. PLAZA • WILMINGTON, DE 19801  
 TELEPHONE: (302) 656-9797 OR (215) 459-3283

TERRY SKLAR

Support  
 Our  
 Advertisers

Largest Selection Of Quality Lighting  
 At the Lowest Prices Anywhere  
**GUARANTEED!**  
 (And No Sales Tax)



**Gross**  
 Lighting Center  
 Since 1919  
 4th & Orange Streets, Wilmington, DE  
**(302) 655-5561**

Mon.-Fri. 8 AM - 5:30 PM  
 Wed. 'til 9 PM  
 Sat. 9 AM - 3 PM  
 Other hours by appointment

• Indoor & Outdoor Lighting  
 • Table & Floor Lamps  
 • Track & Recessed Lighting  
 • Ceiling Fans  
 • 6 Upstairs Showrooms

Plus much more in contemporary  
 and traditional lighting.  
**NOT VALID WITH OTHER DISCOUNTS  
 IN STOCK ITEMS ONLY**  
 Expires January 31, 1991

We Offer  
**Bulk Purchase Discounts!**  
 Present this coupon for  
**50% OFF**  
 LIST  
 \*DOES NOT INCLUDE FLUORESCENT LIGHTING.

**COMING SOON**

- Big Savings On Home Lighting
- Look For The Quoizel Home Lighting Sale Circular in Your News Journal Thanksgiving Day Paper

# JEWISH FAMILY SERVICE

101 Garden of Eden Road  
Wilmington, Delaware 19803  
478-9411

President - Norman Pernick

Executive Director - Arnold Lieberman, LCSW

Jewish Family Service offers a range of services for Jewish individuals and families.

### INDIVIDUAL AND FAMILY COUNSELING

Jewish Family Service offers skilled professional counseling in dealing with family problems such as marital difficulties, parent-child relationships, mental and physical health, individual adjustment, and changes in life situations.

### SPECIAL SERVICES TO THE ELDERLY

Services include counseling, friendly visiting, monitoring, linkage to needed services, and case management.

### JEWISH FAMILY LIFE EDUCATION

Group discussion designed to enable individuals and families to better cope with phases of normal development and situational stress. These programs also promote the growth of Jewish identity and the Jewish family and community.

### COMMUNAL SERVICES

Services include visitation to Jewish patients in institutions; holiday assistance; assistance to Jewish transients; and limited material and financial aid.

### INFORMATION AND REFERRAL

Jewish Family Service can help if you are not sure what kind of help you need; whether it exists; where it is to be found; or how to avail yourself of it.

### RESETTLEMENT

Jewish Family Services assists in the resettlement of Soviet families in our community. Jewish Family Service staff and volunteers provide various services designed to enable the refugees to become self-sufficient and assimilated in both the Jewish

and general communities.

The agency office is open from 9 a.m. to 5 p.m. Monday, Tuesday, and Thursday; Wednesday from 1 p.m. to 9 p.m.; Friday, 8:30 a.m. to 4 p.m. All appointments must be scheduled in advance by calling the office. Fees are charged on a sliding scale, and some counseling services are covered by health insurance. Although the agency has a Jewish orientation, the services are available to anyone in need of help. Strict rules of confidentiality are maintained.



2900 CONCORD PIKE  
WILMINGTON, DE 19803  
302-478-2667  
Open 7 Days a Week


Where Your Child's Smile Matters



The World Book Encyclopedia  
Childcraft-The How and Why Library  
Early World of Learning™  
The World Book Dictionary

The World Book Encyclopedia of Science  
The World Book Atlas  
World Book Reading Development Program

HELEN G. GOLDBERG  
District Manager  
302-764-8328



Don't compete with a Kaplan student—be one.

Why? Consider this: Over 1,000,000 students have chosen Kaplan to help prepare them for admissions and licensing exams. Why? Kaplan's test-taking techniques and educational programs have 50 years of experience behind them. We know what helps boost their confidence and scoring potential.

So if you need preparation for the SAT, ACT, LSAT, GMAT, MCAT, GRE, DAT, ADVANCED MEDICAL BOARDS, TOEFL, NURSING BOARDS, NTE, CPA, BAR EXAM or others, call us. Why be at a disadvantage?

**KAPLAN**  
STANLEY H. KAPLAN EDUCATIONAL CENTER LTD.

Courses available for most standardized exams.

Call TODAY for more information.

Independence Mall  
1601 Concord Pike  
Wilmington, DE 19803  
(302) 571-8444

Has your sign been sacked?



Then you are lacking a very important image for success. Having a sign that is in ruin or misplaced could cost you a lot of business over the long term. At Tupp Signs we have built and designed signs that helped businesses like yours to prosper. And we've done that for over 58 years.

**TUPP SIGNS**

Call 322-1600 457 E. New Churchman's Rd. New Castle, DE 19720

Care Alternatives, Inc.  
A One-Stop Care Management Services Firm  
Serving the Elderly and their Families.

- ◆ Securing and Supervising Care Services
- ◆ Managing Income and Paying Bills
- ◆ Filing Medical Insurance Claims
- ◆ Monitoring Nursing Home Care
- ◆ Long-distance Care Giving Services
- ◆ Securing Health Care Facility Placement

Providing Care Management for the Elderly and Disabled

Arnold A. Budin, M.A., NHA  
Trolley Square, Suite 8C  
Wilmington, DE 19806  
658-CARE 658-2273

QUESTION: WHAT HAS WHEELS, MOVES & COMES FROM

**DOLLAR ???**  
RENT A CAR

ANSWER: ANY TYPE OF CAR, TRUCK, OR OFFICE TRAILER FOR SHORT TERM RENTAL OR LONG TERM LEASE

FOR YOUR ANSWER TO THE QUESTION!!!  
CALL DAVE ROSENBLATT AT 302-655-7117

**BRANDYWINE FOOD SHOPPE**

1707 Foulk Road at Silverside  
Wilmington, DE 19803 • Phone (302) 478-3718

SERVING BRANDYWINE HUNDRED OVER 25 YEARS  
LET US PREPARE THE FOOD -- SO YOU CAN HAVE THE FUN!  
WE HAVE A FULL LINE OF GROCERIES

- Homemade Salads • Tea Sandwiches
- Party Platters • Party Subs to 6 ft. long
- Vegetable Trays • Cheese Trays

New Castle Farmers Market

Delaware's biggest & best flea market

FRI. & SAT. 10 A.M.-10 P.M.  
SUNDAY 10 A.M.-6 P.M.  
RT. 13 (Across From Wilmington Airport)

# PROFESSIONAL SERVICES

## ATTORNEYS

**JACOB BALICK, ESQ.**  
*General Practice, Personal Injury Litigation*  
 1211 King Street  
 Wilmington, DE 19801  
 655-6123

**SIDNEY BALICK, ESQ.**  
*Personal Injury-Trial*  
 Suite 604, Mellon Bank Center  
 919 Market Street  
 Wilmington, DE 19801

**SCOTT A. GREEN, ESQ.**  
*General Practice*  
 P.O. Box 3700  
 Wilmington, DE 19807  
 656-7520

## ACCOUNTANTS

**MELVIN J. LEVY C.P.A.**  
*Individuals & Small Businesses*  
 1300 Market Street, Suite 303  
 Wilmington, DE 19801  
 658-3677

**HARRIS M. LISSAK, C.P.A.**  
*Accounting & Tax Planning for all Business*  
 1304 Society Drive  
 Claymont, DE 19703  
 792-2801

## COUNSELORS/PSYCHOTHERAPISTS

**HARRIS FINKELSTEIN, Ph.D.**  
*Licensed - Child, Adolescent and Young Adult Psychology*  
 Suite 23-B, Trolley Square  
 Wilmington, DE 19806  
 655-5123

**PENELOPE NECKOWITZ, Ph.D.**  
*Licensed Clinical Psychologist; Psychotherapy with Individuals, Couples & Families*  
 19-C Trolley Square  
 Wilmington, DE 19806  
 421-9900

**YVETTE RUDNITZKY, LCSW**  
*Individual and Couple Counseling*  
 1304 N. Rodney Street  
 Wilmington, DE 19806  
 654-8933

## DENTISTS

**FRED S. FINK, D.D.S., P.A.**  
*Orthodontics & Pediatric Dentofacial Orthopedics*  
 23 The Commons  
 3518 Silverside Road  
 Wilmington, DE 19810  
 478-6930

**E.J. HERTZFELD, D.D.S., P.A.**  
*General*  
 1900 Washington Street  
 Wilmington, DE 19802  
 654-4484

**LAWRENCE P. JACOBS, D.D.S.**  
*Adult, Restorative Dentistry*  
 708 Foulk Road  
 Wilmington, DE 19803  
 762-6400

**NEW CASTLE DENTAL ASSOCIATES**  
**DR. HAROLD UFBERG**  
**DR. STEVEN CHAMISH**  
**DR. ROBERT FRIEDBERG**  
*General Dentistry*  
 1111 Wilmington Rd.  
 New Castle, DE 19720  
 328-1513

**GARY D. SAFIAN, D.D.S.**  
**RALPH TOMASES, D.D.S.**  
*General Family Dentistry*  
 707 Foulk Road  
 Wilmington, DE 19803  
 652-8656

**RICHARD L. SKLUT, D.D.S.**  
*General Dentistry*  
 Graylyn Medical Center  
 Marsh & Silverside Roads  
 Wilmington, DE 19810  
 475-5555

## PHYSICIANS

**HOWARD Z. BORIN, M.D.**  
*Pediatrics*  
 2006 Foulk Road, Suite C  
 Wilmington, DE 19810  
 475-6465

**RICHARD F. BRAMS, M.D., P.A.**  
*Allergy and Allergic Diseases*  
 2300 Pennsylvania Ave.  
 Wilmington, DE 19806  
 655-4471

**STEVEN P. COOK, M.D., F.A.C.S.**  
*Children Ear Nose and Throat Diseases*  
 1701 Augustine Cutoff  
 Wilmington, DE 19803  
 655-7255

## DELAWARE OPHTHALMOLOGY CONSULTANTS

**ROBERT ABEL JR., M.D.**  
**EDWARD F. BECKER, M.D.**  
**HARRY L. LEBOWITZ, M.D.**  
**LOUIS REARDON, O.D.**  
*Ophthalmology*  
 1100 N. Grant Avenue  
 Wilmington, DE 19805  
 655-3351

**STUART S. FELZER, M.D.**  
*Internal Medicine*  
 Limestone Medical Center, Suite 208  
 1941 Limestone Road  
 Wilmington, DE 19808  
 999-0137

**STEPHEN H. FRANKLIN, M.D., F.A.C.S.**  
*Ophthalmology*  
 1207 North Scott Street  
 Wilmington, DE 19806  
 658-5117

**ERROL GER, M.D.**  
*Surgery of the Hand/Orthopaedics/Sports Medicine*  
 2401 Pennsylvania Ave., #115  
 Wilmington, DE 19806  
 655-9494

**HARRY A. LEBOWITZ, M.D.**  
*Ophthalmology: Cataracts, Diabetes, Glaucoma*  
 1100 North Grant Ave.  
 Wilmington, DE 19805  
 655-3351

**PEDIATRIC ASSOCIATES**  
**DAVID EPSTEIN, M.D.**  
**DAVID LEVITSKY, M.D.**  
**NEAL COHN, M.D.**  
*Pediatrics*  
 110 Christiana Medical Center  
 Newark, DE 19702  
 368-8612

## PEDIATRIC CARDIOLOGY ASSOCIATES OF DELAWARE, P.A.

**HENRY A. KANE, M.D.**  
**STUART SEPTIMUS, M.D.**  
**A. MAJEED BHAT, M.D.**  
 4745 Ogletown-Stanton Rd., Suite 138  
 Newark, DE 19713  
 731-0700

**RICHARD M. PLOTZKER, M.D.**  
*Endocrinology & Metabolism*  
 611A West 18th Street  
 Wilmington, DE 19802  
 658-7012

# MILTON & HATTIE KUTZ HOME

704 River Road, Bellefonte, Wilmington, DE 19809, 764-7000

President - Jack B. Jacobs

Director - Dan Thurman Auxiliary of the Milton & Hattie Kutz Home - Louise Sloane, President



The Kutz Home offers its residents the benefits of a comprehensive medical, nursing, religious, recreational and social program, geared at maximizing each resident's living satisfaction and individual dignity in a group environment. Residents are involved in community programs as well as the many activities which take place in the Home.

Located in a picturesque residen-

tial setting, the Kutz Home is a bright and lively facility with a warm and relaxed atmosphere. Continuous renovation and enhancement of the Home has been made possible with funds raised by the Auxiliary of the Milton & Hattie Kutz Home.

The Kutz Home is licensed by the State of Delaware as an Intermediate and Skilled nursing facility, and participates in the Medicaid program.

## BOYD'S FLOWERS

Where artists bring beauty to bloom.



421-2900

2013 Penna. Ave.  
824 Mkt. St. Mall  
2900 Concord Pk.



Lindell Square - Suite 2  
1601 Milltown Road  
Wilmington, DE 19808

Hours by Appointment  
Days and Evenings



## Lindell Physical Therapy

Jay S. Kogon, R.P.T., A.T.C.

Comprehensive Physical Therapy

- Orthopedic Rehabilitation
- Sports Injury Treatment and Prevention

(302)998-7572

**JIFFY**  
JEWISH  
INFORMATION  
FAST FOR YOU  
**302-478-6200**  
In Dover area call 678-0772  
JEWISH FEDERATION  
OF DELAWARE

**GILPIN REALTORS**  
**Charen Schnetter, R.A.**  
LICENSED IN DE & PA  
OFFICE: (302) 575-0880  
HOME: (302) 478-6911  
\*Fundraising Program Available

## Schoenberg Memorial Chapels



In the hallowed tradition of our faith....

a dignified setting with reverence for customs and observances in strict accord with family wishes.

519 Philadelphia Pike  
762-0334

COMING  
ATTRACTION  
FEATURED AT  
**PINEMERE**  
CAMP  
(Camp within a camp)  
Acamper may select, soccer and/or basketball specialities in the middle of the regular camp season  
ROBERT MINER, EXECUTIVE DIRECTOR  
PINEMERE CAMP  
438 W. Tabor Rd.  
Phila. PA. 19120  
(215)924-0402

Rated best \*  
permanent & temporary



**ROBERT  
HALF**

- accountants
- bookkeepers
- controllers
- data processors

and  
**accountemps**  
475-4500

Brandywood Plaza • Foulk & Grubb Roads  
Wilmington, DE 19810

\*Independent survey Burke Marketing Research

© 1989 Robert Half International, Inc.

Independently owned and operated.

**specialists**

To  
Advertise  
In  
The  
Jewish  
Voice  
CALL  
478-6200



HEY, I KNOW WHAT TO DO! JUST CALL SPECIALIZED DRAPERY CLEANERS. THEY'LL CLEAN THEM EXPERTLY, STORE THEM & SIZE THEM FREE AND REHANG THEM!

OH, DEAR. WHAT AM I GOING TO DO ABOUT CLEANING MY DRAPES? I'LL CALL LORRI...

**FREE ESTIMATE**  
302-427-2979  
ESTABLISHED 1915

**SPECIALIZED**  
DRAPERY CLEANERS

**Personality**

TRADITIONAL & CONTEMPORARY PAPERS

Wedding Invitations  
Bar & Bat Mitzvah Invitations  
Personalized Stationery  
Birth Announcements  
Business Cards & Stationery  
Gifts

MARIAN B. LINDBERGH  
2010 Kynwyd Road  
Wilmington, Delaware 19810  
(302) 475-4855

**HONG KONG** CUSTOM TAILOR BACK IN WILMINGTON  
By Appointment Only

FINEST HAND-TAILORED SUITS BY OUR SKILLED CRAFTSMEN. Made to your measurements and styled to your choice. SMA., BIG, OR TALL, WE FIT ANY SIZE.

MEN'S SUITS \$295	6 CUSTOM MADE DRESS SHIRTS from \$189	TRIAL ORDER
SP. JACKETS \$220		1 Wool Blend Suit
SLACKS \$95		1 All Wood Suit
LADY'S SUITS \$345 (from) Plus shipping & duty		3 Shirts from \$759

**FALL SALE 1 FREE**

NAVY BLAZER W/3 ENGLISH CASH/WOOL SUITS Ltd. time offer w/ad

AT HOLIDAY INN (in Wil. Rt. 202)  
Tel. (302) 478-2222  
Leave message if not in.  
Please call for appointment (10-7 pm)

**Olsten**  
TEMPORARY SERVICES

WE KNOW HOW TO HELP

WILMINGTON .....	575-1700
NEWARK .....	738-3500
CONCORD PLAZA .....	478-6110
DOVER .....	1-734-5379

Gilbert J. Spiegel Founder  
Pat Spiegel Chalphin President

ALAN GOLD BOB GOLD

**B. Reibstein Memorials**  
**Art Monument Company**

Main Line 121 City Line Ave. Bala Cynwyd, PA 19004 (215) 667-5800	Delaware 1603 Jessup St. Wilmington, DE 19802 (302) 575-1450 SINCE 1895	Northeast 8255 Bustleton Ave. Philadelphia, PA 19152 (215) 725-2200
--	---	--

Authorized Rock of Ages Dealer  
Delaware's only Jewish Monument Dealer

**Final Finishes**

**The Painting Company**

Welcome To:

- ~ The finest in painting, restoration, and specialty finishes for the home, office or apartment.
- ~ A full service company displaying a wide range of skills.
- ~ Attention to detail, quality and personal service.
- ~ Specializing in exterior cedar siding restoration.
- ~ Teams of skillful craftsmen on each job.
- ~ Quality preparation and the finest paints available at affordable prices.

Paul E. Hughes  
5-year guarantee  
764-8622

10-15% off Painting done between 12/15/90 and 3/15/91

**Yvonne** tennis boutique  
478-5695

FINE SPORTSWEAR

New Expanded Line of Elegant Casual Wear

Between Thanksgiving and Christmas Shop Friday 'til 9

3640 Silverside Road, Talleyville Towne Shoppes

**House of Watches**  
and FINE JEWELRY

DIAMONDS  
EXPERT WATCH & JEWELRY REPAIRING  
JEWELRY & WATCHES  
SILVER, PEWTER, BRASS

R. J. BERMAN PHONE 654-7751 1330 WASHINGTON STREET WILMINGTON, DE 19801	G. A. BERMAN PHONE 478-3098 2505-B CONCORD PIKE WILMINGTON, DE 19803
--	---



Hop on over to...

*the FROG SHOPPE*

Teachers and parents will find educational ideas that enrich and develop young minds! Duplicating books, Bulletin Board Sets, Work Books... Learning Games, Puzzles, Abacus, Records, and More!

**Full line of Razensburger games & puzzles.**

**We also furnish inside and outside equipment for Daycares, Nursery Schools, Pre-Schools**

**The Frog Shoppe, Inc.**

Teacher/Parent Resource Center

9-B Trolley Square (On the Second Level)  
Delaware Ave. & DuPont St., Wilmington • 655-2799  
Open Mon.-Fri.-Sat. 10-5, Tues.-Wed.-Thurs. 10-6, Sun 12-5

**KRESTON LIQUOR MART**

**DELAWARE'S LARGEST AND MOST COMPLETE LIQUOR STORE**

**"SEEING IS BELIEVING"**

You Must See Kreston Liquor Mart To Believe The Vast Selection And Low Prices

Full line of Kosher wines



904 Concord Avenue  
(Concord Avenue & Broom Street)

Phone: **652-3792**

Major Credit Cards & MAC Accepted

THESE DAYS, MERE CUSTOMER "SATISFACTION" WON'T CUT IT. AT "OAK CORNERS" WE TRY TO "DELIGHT" YOU.



**325 S. Du Pont Hwy. New Castle, Delaware (302) 323-9233**

HOUR: SUN.: 12-4  
MON. & TUES.: CLOSED  
WED. & THURS.: 9:30-8  
FRI.: 9:30-5

VISA • DISCOVER • MASTERCARD WELCOMED  
DELIVERY AVAILABLE. NO CHECKS, PLEASE  
"OAK CORNERS" REG. S.M. ©1990

**FAMOUS TIPS**

**I never met a man I didn't like. Unless he was wasteful.**



If we take a few steps to conserve our precious natural resources today, they'll be here tomorrow. No one knows this better than Delmarva Power. We're committed to producing and conserving energy in ways which not only protect our environment, but enhance it.

By raising rockfish at our Vienna Power Plant brooding pond, we've helped replenish our dwindling striped bass population. So far, we've released over 75,000 fingerlings back into the Chesapeake Bay.

We reduce solid waste by recycling fly ash, instead of disposing of it in landfills. We've used the fly ash to help build highways, and an artificial reef in the Delaware Bay, which has improved marine life.

Delmarva Power also saves millions of gallons of drinking water a year by using filtered river

water for power plant operations, instead of drawing from our drinking supply.

You can help, too. When you save water, you also save money on your energy, water and sewer bills. So take showers instead of baths. You'll use only half the hot water. And install flow restrictors on your shower heads.

Recycle cans, paper, glass, even motor oil. Just pour the used oil into an airtight container and bring it to a service station that accepts used oil. The oil will be picked up by a collector and recycled into clean fuel.

For more conservation tips, write to your Delmarva Power office. And help us protect today's energy supply as we research tomorrow's energy sources. You'll like how it makes you feel.

**Delmarva Power**

Energy at your service, today and tomorrow.



**Mrs. Spencer's Housekeepers**  
COMPANIONS, HOUSEKEEPERS,  
NANNY LIVE IN OR OUT  
Professional-Prompt-Pleasant  
656-7222  
**TEAM CLEANING**  
TRAINED BONDED STAFF - REFERENCES  
656-9984

THE **NANNY** REGISTRY  
Live-In Nannies  
Screened • Trained  
Economical • Guaranteed  
AVAILABLE NATIONWIDE  
**1-800-331-2669**



**FAIRFAX VALET**  
PROFESSIONAL  
CLEANERS & LAUNDERS  
**Suede & Leather  
Repairs & Alterations**  
Fairfax Shopping Center  
Rt. 202 (Concord Pike)  
652-6725

**ISRAEL BONDS**  
For sale, reinvestment and redemption information call:  
**1-800-752-5671**





The Garden of the Righteous Gentiles (above), located in front of the Jewish Community Center in Wilmington, is the first monument in the United States to Christians who saved the lives of Jews during the Holocaust in Europe. The Garden's original trees were dedicated in November 1981 by Holocaust survivors residing in Delaware. Individual bronze plaques at the trees bear the names of rescuers, nine of whom saved Jews who later came to live in Delaware; one Christian couple, Ger and Gerald Van Raan, honored in the Garden for their heroic efforts in Holland, also came to reside in Delaware. The Garden was inspired by an "Avenue of the Righteous" at Yad Vashem, the Holocaust museum and resource center in Jerusalem.

At the entrance to the Jewish Community Center, stands the monument to the children who survived the Holocaust (left). The bronze monument, a pair of figures from a larger work of 12 figures called "Kaddish," is the work of an Israeli artist. The statue was purchased by the Halina Wind Preston Holocaust Education Committee of the Jewish Federation of Delaware. An accompanying plaque reads: "In memory of the more than one million Jewish children who perished during the Holocaust, 1933-1945."

In Freedom Plaza in downtown Wilmington, stands the Holocaust Memorial of Delaware (top right). The sculpture is comprised of three 15-foot, irregularly-shaped, concrete columns, on which are etched the names of several of the concentration camps. The columns are compressed against three bronze figures; a man, a woman and mother and child, representing the victims of the Holocaust. The massive impersonal forces of the columns suggest man's inhumanity to man and the cold cruel barbaric mentality for the Nazis in an unmovable world. The figure of the mother holding a child over her head may also represent the end of a nightmare and the beginning of a new life. Freedom Plaza is located in the 800 block of French Street (between 8th and 9th Streets) in Wilmington.

The memorial grave marker in the Beth Emeth Memorial Park (bottom right) was dedicated at a memorial service in September 1987.

The Halina Wind Preston Holocaust Resource Center, dedicated in 1987, contains Holocaust-related literature and history books and is housed in the Jewish Community Center.



Natural hardwood has a chaotic beauty that touches our senses and retains its allure and mystic. It varies in finish, reflection, color, texture, grain, feel, and smell. No two pieces of real wood furniture are alike. Imperfections give a piece character. You enjoy touching, looking, being with it. Real hard wood furniture belongs in your home. Don't accept substitutes. Visit "Oak Corners" and experience Quality and Value.

# OAK & CHERRY FURNITURE

"Oak" Furniture Warehouse, Inc.  
325 S. Du Pont Highway  
New Castle, Delaware  
(302) 323-9233

VISA • DISCOVER • MASTERCARD WELCOMED  
DELIVERY AVAILABLE. NO CHECKS, PLEASE  
"OAK CORNERS" REG. S.M. ©1990

## susan isaacs

GALLERY

FINE ARTS  
PICTURE • FRAMING

709  
Tatnall St.  
Wilmington  
DE  
19801  
302 658-1948

Renowned artist will convert your favorite photo into a valuable oil painting!  
For more information call  
Helen Green 479-0498



**"We give you more options. We represent over a dozen insurance companies. We are in step with the coverage needs of the local market. So, after we do all the shopping around for you, we can offer you several programs to choose from. We care about your business."**

**HARRY S. WILSON, INC. • COMMERCIAL INSURANCE**  
Delaware (302) 762-9292 Elsewhere (800) 969-9291



European live-in child care, up to 45 hrs/wk. Legal non-profit cultural exchange program. Cost approx. \$165/wk.  
215-635-3842

*The Fine Art of* **HEALING**



It takes skills. Sometimes superhuman skills. It takes commitment. Care. And a special kind of love. The love of life. The art of healing. At Riverside Hospital we practice it with determined excellence. And measure our success in your words:

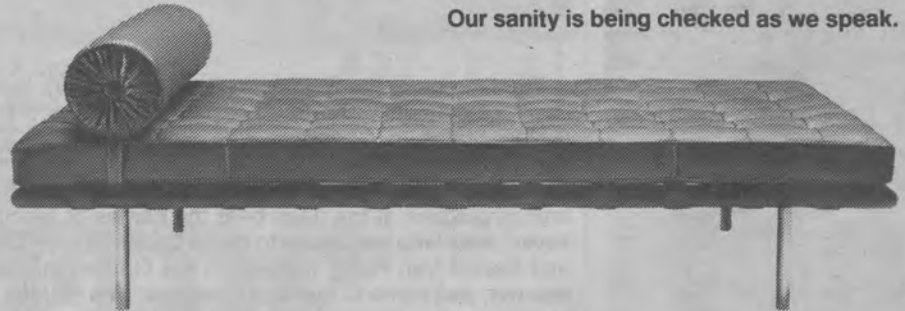
*I feel much better, thank you."*



**RIVERSIDE HOSPITAL**  
Quality Care Close To Home

700 Lea Boulevard • Wilmington, DE 19802  
302/764-6120

Now when you fly El Al roundtrip to Israel, we'll give you a great low fare plus up to \$224 in vouchers which you can use for a free car rental. Or state-issued gold or silver medallions. Or up to \$150 off an escorted tour. Or a special \$70 round trip from Tel Aviv to Cairo. Or a free round trip from Tel Aviv to Eilat. Our sanity is being checked as we speak.



To find out more about our new low fares and Bonus Special, see your travel agent or call 1-800-223-6700. In NY, 212-768-9200.

**Israel EL AL**  
Come stay with friends. The Airline of Israel.

Promotion appl. for US originating passengers travelling on El Al Mon., Tues., Wed. 10/17/90-2/27/91 (excl. 12/15-12/24/90) from NY, BOS, CHI, MIA, LAX holding published adult airfares (incl. super Apex fares). Not avail. on any discounted tkts, children's fares or on any other special agreements as indicated on tkts. Bonus: car rental: cat. A, unlimited mlg. 1 wk. with 2 vouchers, or 3 days with 1 voucher (not incl. gas & ins). All Hertz rules apply. Medallions: Silver or Gold (valid while gold price under \$425/oz.). \$100 refund on any El Al escorted tours, or "Arrive & Drive" Israel Program and up to \$150 refund on escorted tours from participating tour operators: American Express, Ariel, Gate One, Isram Travel and Unitours. Roundtrip tkt TLV-Eilat on Arkia only. Special rndtrp. tkt TLV-Cairo on El Al only. Vouchers must be redeemed and used by 3/15/91. Lost voucher not replaced. Not combinable with any other promotional or discounted offers. Other restrictions may apply. Bonus is subject to change without notice.

**The Quality Of Light**



**MATTES LIGHTING SERVICE**

Signs  
Interior & Exterior Lights  
Parking Lot Lights

**656-9933**

**When it's cold outside...**



**York makes you feel good inside.**

Before you know it, cold winter winds will be knocking at your door. Is your current furnace going to last through another miserable season? If it's a York, you can comfortably answer "yes."

York Stellar PLUS® high-efficiency gas furnace is your solution to cold-weather problems. The product of extensive testing in homes nationwide, this new high-efficiency system is an affordable alternative to the winter chill. There's a quiet, durable York Stellar PLUS furnace available to fit your home and it's backed by one of the best warranties in the industry.

**FREE five year parts and labor warranty on your New Stellar PLUS Gas Furnace if you buy between September 1, and December 31, 1990!**

**YORK**  
Heating and Air Conditioning  
*York makes you feel good inside.*



**Buy your new Stellar Plus Gas Furnace between September 1, and December 31, 1990 and get a FREE Five Year parts and labor warranty on your new unit!**

This offer applies only to York High Efficiency Gas Furnaces (models P3UCD, P3CCD and P2UDD). Builder sales do not apply to this program.

CALL:



200 A DELAWARE AVENUE  
WILMINGTON, DELAWARE 19803

478-4265

**PERFECT CLIMATE**

**The Honeywell Electronic Air Cleaner**  
Protect your high efficiency equipment... install a Honeywell Electronic Air Cleaner. Removes up to 95% of the smoke, dust, dirt and other airborne impurities passing through it.



# LOCAL CHAPTERS OF NATIONAL ORGANIZATIONS

## LOCAL ORGANIZATIONS

### ALPHA EPSILON PI

Fraternity House  
314 Wyoming Avenue  
Newark, DE 19711  
731-0440

### B'NAI B'RITH LODGE NUMBER 470

President:  
Robert J. Berman  
1401 Stoneleigh Road  
Wilmington, DE 19810  
478-3984

### B'NAI B'RITH WOMEN OF DELAWARE

President:  
Judy Goldbaum  
1621 Windybush Road  
Wilmington, DE 19810  
475-5191

### CHABAD-LUBAVITCH OF DELAWARE

Director:  
Rabbi Chuni Vogel  
1306 Grinnell Road  
Wilmington, DE 19803  
478-4400

Chabad House at the University of Delaware  
630 Lehigh Road, #0-11  
Newark, DE 19711  
478-4400

### HADASSAH

Wilmington Chapter  
President:  
Faith Brown  
2205 Greenstone Road  
Wilmington, DE 19810  
475-8065

Newark Chapter  
Co-Presidents:  
Frances Klaff  
4 Briar Lane  
Newark, DE 19711  
738-9468

Mary-Lee Lutz  
41 Bradley Drive  
Newark, DE 19702  
834-9601

Leni Markell  
222 Hullahen Drive  
Newark, DE 19711  
737-5473

Dover Chapter  
President:  
Helen Berman  
P.O. Box 15  
Dover, DE 19903  
678-0550



### HILLEL

Counselor:  
Ruth Kershner, LCSW  
64 East Main Street  
Newark, DE 19711  
453-0479  
.....  
Chair of Advisory Committee:  
Dr. Vivian Klaff  
4 Briar Lane  
Newark, DE 19711  
738-9468

### JEWISH WAR VETERANS

Department of Delaware  
Israel Weiner  
8 Ridgewood Circle  
Wilmington, DE 19809  
764-2120

Post No. 525/Harry Fineman  
Harry Lubin  
1106 N. Overhill Court  
Wilmington, DE 19810  
475-6521

Post No. 747/Nathan Ballick  
Samuel Braxman  
302 Shipley Road  
Wilmington, DE 19809  
762-4646

Post No. 767/Arthur Blatman  
Samuel Geller  
310 West 38th Street  
Wilmington, DE 19802  
764-0636

### LABOR ZIONIST ALLIANCE

Financial Secretary:  
Thomas Seidel  
205 Harvey Road  
Claymont, DE 19703  
798-1770

### NATIONAL COUNCIL OF JEWISH WOMEN

President:  
Jean Blumenfeld  
732 Taunton Road  
Wilmington, DE 19803  
478-3835

### PARENTS OF NORTH AMERICAN ISRAELIS

Local Representative:  
Ruth Seidel  
205 Harvey Road  
Claymont, DE 19703  
798-1770

### WOMEN'S AMERICAN ORT

Co-Presidents:  
Michelle Engelmann  
2310 Beacon Hill Drive  
Wilmington, DE 19810  
475-7418

.....  
Connie Sugarman  
2604 Pin Oak Drive  
Wilmington, DE 19810  
529-1177

### BRANDYWINE COUNTRY CLUB

President:  
Alfred M. Isaacs, Esq.  
2822 Shipley Road  
Wilmington, DE 19810  
478-2100

### JEWISH HISTORICAL SOCIETY

President:  
Helen Goldberg  
3315 Heather Court  
Wilmington, DE 19809  
764-8328

### MONTEFIORE MUTUAL BENEFIT SOCIETY

President:  
Edward Simon  
31 West Brite Court  
Wilmington, DE 19810  
475-7605

## MACHZIKEY HADAS CONGREGATION

**WELCOMES  
ALL THE UNAFFILIATED  
TO JOIN US FOR  
HOLIDAY & SABBATH SERVICES**

**Friday evenings at 8:00 p.m.  
Saturday mornings at 9:00 a.m.**

**Cantor - Marvin Zuckerman**

**B'nai B'rith Building,  
8000 Society Blvd., Claymont  
798-6846**

## Temple Beth El

**301 Possum Park Road  
Newark, Delaware 19711  
(302) 366-8330**

*A warm and caring Jewish Community serving Greater Newark, Hockessin, Pike Creek Valley, and many areas in Maryland and Pennsylvania.*

**Rabbi:** David Kaplan

**Administrator:** Ann Herman

### Spiritual

Our congregation is liberal in terms of religious beliefs and personal observance, but respects and observes tradition. Our services are a combination of traditional Hebrew prayers and modern English readings.

### Educational

Our Hebrew School presently has an enrollment of 150 children. We are egalitarian in our Bar and Bat Mitzvah preparation and are proud of the high degree of participation in our confirmation program. Programming for pre-schoolers, as well as adult education, are also top priorities.

### Community

Temple Beth El strives to provide its congregants with the sense of belonging and personal relationships that result when Jewish people join together as a community. With approximately 200 family members, each member is considered our most valuable asset, and is encouraged to participate in all Temple activities. We strive to provide an intellectual atmosphere in which ideas can be discussed and debated. Sisterhood, Men's Club, and BBYO provide many social opportunities for teens and adults.

Temple Beth El's modern building includes a sanctuary, classrooms, a library, social hall, and a kosher kitchen.

**For membership information, please call the Temple at 366-8330**

*Affiliated with the Federation of Reconstructionist Congregations and Havurot.*



## **WELCOME NEWCOMERS**

**For over 50 years the Jewish Federation of Delaware has been welcoming newcomers to our community.**

In 1990 nearly 200 new families moved or transferred here for economic, employment or other related reasons.

In addition we welcomed 68 Soviet Jews who arrived in Delaware. At least that many more are expected in the next ten months as part of 40,000 seeking refuge in the United States.

This is part of a massive modern exodus of the third largest Jewish community in the world. Within this year 150,000 Soviet Jews fleeing

religious persecution will find freedom in Israel or the United States.

Over 1,000,000 Soviet Jews have already applied for visas for resettlement.

Whether a newcomer is seeking freedom or new opportunities, the Jewish Federation of Delaware welcomes you. We are eager to help you settle in and share our exciting cultural, religious and social life.



Jewish Federation of Delaware  
101 Garden of Eden Road  
Wilmington, Delaware 19803  
(302) 478-6200

**Please call us at  
478-6200  
if we can be of any assistance.**