

Jewish Historical Society
 Mr. Julian H. Preisler
 505 Market Street Mall
 Wilmington, DE 19801

Vol. 28, No. 11 10 Adar 5755 February 10, 1994 28 Pages
 PUBLISHED BY THE JEWISH FEDERATION OF DELAWARE 101 GARDEN OF EDEN RD., WILMINGTON, DE 19803

Joan Wachstein Installed as Trustee of UAHC

By DAN WEINTRAUB
 Editor of *The Jewish Voice*

Joan Wachstein of Wilmington, Delaware, a long-time member of Delaware's Congregation Beth Emeth, has been installed as a trustee of the Union of American Hebrew Congregations (UAHC), central congregational body of Reform Judaism in North America. The board of trustees sets basic policy for the 860 Reform congregations and their membership of 1.3 million in the United States and Canada. Wachstein told *The Jewish Voice* "My election to the Board of Trustees of the Union of American Hebrew Congregations, is the next step, in the progression of steps to be a participant in the shaping of the Reform movement for the century to come." Wachstein noted that she follows Delaware's Constance Kreshool who previously served as a trustee.

In 1994 she received the Keva certificate from the UAHC, Central Conference of American Rabbis and the National Association of Temple Educators for accomplishment in Adult Jewish education. Wachstein has previously served as a local sisterhood President, President of the Sisterhood District, as a member of the National Board of the Women of Reform Judaism, as a Vice-President of the

Women of Reform Judaism, and currently as the Chair of the Planned giving Department. She also chairs the Older Adult Committee for the Sisterhood Region. In the past she has also served on the board of the Mid-Atlantic Region, as the Biennial Program Chair for the Regional Biennial, and currently as a Vice-President of the mid-Atlantic Region. She was certified in Resource and Referral in the Field of Gerontology, by the UAHC and the Hebrew Union College, during the Summer of 1994. She serves on the following UAHC committees: Jewish Family, Older Adults and Bio-Ethics, Commission on Religious Living, Outreach, and the Outreach Executive Committee.

Locally, she is the Immediate Past President of the Jewish Family Service of Delaware (JFS), A Vice-President of the Milton and Hattie Kutz Home (Kutz), a member of the Board of the Jewish Federation of Delaware (JFD), and a member of the Jewish Community Endowment Committee. She chairs the Newcomer's Committee for the JFD. She is a member of the board of the Beth Emeth Sisterhood and Chairs the Nominating Committee. She has also been affiliated with other local organiza-



NEWEST TRUSTEE — Joan Wachstein of Wilmington, Del., a long-time member of Congregation Beth Emeth in Wilmington, has been installed as a trustee of the Union of American Hebrew Congregations (UAHC), central congregational body of Reform Judaism in North America. She is shown being congratulated by Melvin Merians (left), chairman of the board of trustees, and Rabbi Alexander M. Schindler, president of the UAHC. The board of trustees sets basic policy for the 860 Reform congregations and their membership of 1.3 million in the United States and Canada. Ms. Wachstein is a past president of the Beth Emeth sisterhood. Photo by Brian Middlebrook.

She is a member of the Board of the United Way of Delaware, chairs the allocation Panel V Committee, serves on the Strategic Planning committee, and the Ethics Committee. She was a nominee for the United Way of Del., Apex Award. She agreed to chair the governor's Women for Carper Committee for the next two year period. She serves as a

member of the State of Delaware Commission on Adult Entertainment Establishments. Wachstein concluded, "I want to participate in making the place we live a place that is user friendly to all people, but I have made a commitment that the Jewish people will continue, and that the services that were here for me to use and take advantage of, will be here for my children and their children to use."

Wachstein, a dental hygienist, and her late husband Mortimer Wachstein, had two children Lisa Beth and Esther Lynn. She is listed in *Who's Who in America*.

The phrasing of this clause was believed to have been an issue of some dispute, according to Israeli news reports.

Moussa told reporters that no agreement was reached on two major sticking points in the Israel-Palestinian negotiations: the expansion of Jewish settlements on the West Bank and the lifting of the closure imposed on the territories following a Jan. 22 suicide bomb attack near Netanya that claimed the lives of 21 Israelis.

But Moussa said the summit had resuscitated the peace process.

rael and the Gaza Strip.

The leaders expressed their appreciation of the swift implementation of the peace treaty between Jordan and Israel, and of Egypt's role in the peace process.

They also condemned "all outbreaks of bloodshed, terror and violence in the region."



CAIRO -- (L-R) Israeli Prime Minister Yitzhak Rabin, King Hussein of Jordan, Egyptian President Hosni Mubarak and PLO Chairman Yasser Arafat pose for a photo before their meeting Feb. 2. The four leaders met, in a unprecedented summit; to try to revive the stalled Middle East peace process. CREDIT:RNS PHOTO/Reuters (Reproduction rights not transferable)

Historic Middle East Summit Bolsters Precarious Peace Process

By NAOMI SEGAL

JERUSALEM, (JTA) — Israel and its three regional peace partners — Egypt, Jordan and the Palestine Liberation Organization — concluded a historic summit last week with a communique reaffirming their commitment to the peace process and denouncing terror and violence in the region.

Prime Minister Yitzhak Rabin, Egyptian President Hosni Mubarak, Jordanian King Hussein and PLO Chairman Yasser Arafat met for more than four hours in unprecedented talks focused on the future of the regional peace process.

At the conclusion of the summit, Egyptian Foreign Minister Amre Moussa read a joint communique in which the leaders reaffirmed their commitment to a comprehensive peace in the region and to fulfill the accords between them.

The leaders also called for a prompt move "to conclude the negotiations on the interim agreement between Israel and the Palestinian Authority in all its aspects."

They also vowed to work "to improve the climate and build the confidence between the parties."

To this end, they established a general framework for continued negotiations between Israel and the PLO.

As part of that framework, the foreign ministers of Israel, Egypt, Jordan and a Palestinian representative will meet in Washington next week.

Rabin and Arafat are also scheduled to meet next week at the Erez checkpoint between Is-

"I believe the Palestinian-Israeli peace process is back on track," he said.

Prior to the meeting, the four leaders gathered at Mubarak's palace for Iftar, the traditional daily sunset meal with which Muslims break the monthlong Ramadan fast.

Earlier in the day, Mubarak held separate meetings with Arafat, King Hussein and Rabin. Peres and Moussa joined the talks between Rabin and Mubarak.

Before leaving for Cairo, Rabin said he would call on Arafat to crack down on terrorists operating from the autonomous areas.

(Continued on page 27)

INSIDE

ARTS	20
BRIEFS	3
BUSINESS & PROFESSIONALS	12
CALENDAR	23
CAMP GUIDE	10
CAMPAIGN WEEK	18
DINING & MORE	17
EDITORIAL	4
LATE BITS	2
FOOD COURT	11
LOCAL	6
MORE NEWS	24
OPINION	5
PANIM EL PANIM	8
SUPER SUNDAY	19
SYNAGOGUE LIFE	22
WINTER WEDDINGS	13



JEWISH VOICE Winter Weddings Advertisers

PAGE 13
Janis Nowlan Orchestra
Janis Shaw Orchestra
Mary Miller Orchestra
Sid Montgomery Ford Photography
O.K. Video
Sheraton Suites
"The Omelette King"

PAGE 14
Kater Kart Cuisines
Bala Judaica
Kids Kab
Sue's Stationery
Village Green

PAGE 15
Lady's Image
Fantasia Bridal Gowns
Riva Brown's Living Letters
DuPont Country Club
Simon's Bridals
B&B Tickettown

PAGE 16
Charlotte Fischer Invitations
Take-A-Break Catering
Sprint Invitations
Fox Point Grill
Pasta Blitz



LATE BITS

(The following summaries relate to late breaking stories and other items of interest. Much of what follows was not available in a more substantial form at press time. These news summaries are provided by the Jewish Telegraphic Agency.)

WASHINGTON — Delegates to the National Jewish Community Relations Advisory Council take their message to Capitol Hill after passing several policy resolutions.

WASHINGTON — As expected, President Clinton's budget includes \$3 billion in foreign aid to Israel.

WASHINGTON — The annual jockeying on the foreign aid debate begins as a coalition of humanitarian organizations calls the annual aid to Israel and Egypt "a waste of U.S. tax dollars."

JERUSALEM — The first Middle East regional peace summit gave the stalled peace process a badly needed shot in the arm, but it did little to bolster Prime Minister Yitzhak Rabin's standing.

JERUSALEM — Foreign Minister Shimon Peres urges American Jews to lobby for foreign aid to the Middle East as a way of bolstering the peace process.

CHICAGO — In a local move reflecting a national sentiment to curb support for terrorism, Illinois becomes the first state to take action against international terrorist groups.

JERUSALEM — Palestinian police arrest 45 militant Palestinians in Gaza, following the latest terrorist attack.

JERUSALEM — After months of

fence-sitting, the Shas Party decides not to re-enter the coalition.

JERUSALEM — On trial for alleged misuse of credit cards, Simcha Dinitz, former chairman of the Jewish Agency, takes the stand in his own defense.

JERUSALEM — The American Jewish Committee's new man in Israel is in the news: his proposal for a border between Israel and a Palestinian entity has reportedly been adopted by the Israeli government.

NEW YORK — Maryanne Gingrich, wife of the Speaker of the House, is working to convince American companies to invest in an Israeli free-trade zone.

TORONTO — The Canadian Jewish Congress furthers its effort to win government funding for secular curricula at Jewish day schools.

JERUSALEM — Israel's chief Sephardic rabbi grants 24 men permission to take a second wife.

Scholarship

The Sylvia and Isadore N. Silverman Scholarship Fund will be awarding its Sixth Annual Scholarship to a deserving youth for a Jewish summer experience in camp or Israel. Applications may be picked-up at the Adas Kodesch Shel Emeth Office and should be returned by April 15. This fund was established in 1989 in honor of the 55th Wedding Anniversary of the Silvermans by their four daughters and many friends.

News Analysis:

The Grave Consequences of Closure

By **NECHEMIA MEYERS**

Special To The Jewish Voice

If Palestinians are indeed prevented from working in this country, as Prime Minister Rabin has pledged, this will have little effect on the Israeli economy, but a devastating one on their own. This is because Israel is finding Rumanians, Turks and Thais to replace the Palestinians who have hitherto been picking its oranges and building its houses, but no replacement exists for the billion dollars a year that the Palestinians have been earning in Israel.

Many Israelis just don't care. "After all," as one of my neighbors put it, "they have brought this on themselves and so far as I am concerned they can stew in their own juice."

While such a reaction is psychologically understandable after so many terrorist outrages, it is likely to be counterproductive because economic deprivation in Palestinian areas will not decrease terror, but, in all probability, increase it.

This point was made last week by Prof. Ezra Sadan, a former Director-General of the Ministry of Finance

who three years ago headed a committee that studied the economic links between Israel and the Territories. He notes that the situation in Palestinian areas is already grave, with unemployment reaching 40% in the West Bank and 50% in the Gaza Strip. While this is due in part to the delay in promised international aid, it will be many years—even if the flow steps up—before the tens of thousands of missing jobs can be created, says Sadan.

Perhaps the problem could be alleviated, at least to some extent, by "exporting Israeli jobs" to Palestinian areas. In fact, local employers, anxious to take advantage of the low wages paid in these areas, already subcontract some of their work to the West Bank and the Gaza Strip.

In an article that appeared some months ago in the "Palestine-Israel Journal," Sadan pointed out that "20% of Gaza's industrial establishments are small sewing shops employing an average of five people each, establishments that function as subcontractors for the large Israeli clothing industry. The Gazans pro-

vide the sewing while the Israelis carry out the designing, cutting and finishing."

The situation is rather different in the agricultural sphere, where, Sadan notes, "Gaza farmers are equipped with modern equipment, including drip irrigation, and can already produce high-level products for even the most capricious Western consumers. For example, some 60 percent of the strawberries now exported under the Israeli 'Carmel' label are grown in the Strip. In this case the Palestinian component is a sophisticated farm product, while the Israeli component is transportation and marketing."

Speaking in more general terms, Prof. Sadan observes that "less developed countries are apt to achieve a measure of economic success when they are in close proximity to industrialized nations. Consequently the Palestinian economy could perform better than other third world ones by taking advantage of the Israeli economy next door, which is twenty times its size and has developed channels to the world's largest markets."

The value of cooperation to both sides is clear. Less clear, however, is the possibility of such cooperation in the prevailing atmosphere of distrust.

Japanese Publishers Pledges Education Drive On Holocaust After Revisionist Article

By **TOM TUGEND**

LOS ANGELES, (JTA) — One of Japan's most influential publishers has pledged to use his chain of magazines to educate his country's citizens "about the tragic history of injustices and suffering endured by the Jewish people."

The pledge was part of a formal apology by the publisher delivered last week during a mass press conference in Tokyo. In one of his magazines, a 10-page article appeared denying the existence of gas chambers and the systematic killing of Jews at Auschwitz.

An editorial statement to the article had expressed "major doubts regarding the 'Holocaust' and the massacre of Jews at the hands of the Nazis." It characterized the article, "The Greatest Taboo of Postwar History: There Were No Nazi Gas Chambers," as the "new historic truth."

Kengo Tanaka, president and CEO of the respected Bungei Shunju publishing house, said that after seeing the article in the February issue of Marco Polo magazine, he decided to shut down the publication, fire the responsible editors and pull all unsold copies from newsstands.

In a highly unusual action, the Japanese Foreign Ministry released a formal statement on the matter, describing the article "as grossly insensitive and inappropriate."

The article had triggered a barrage of protests from U.S. Jewish organizations and the Israeli government. The protest resulted in an advertising boycott of Marco Polo — at the requests of the Simon Wiesenthal Center — by half a dozen international companies.

Rabbi Abraham Cooper, associate dean of the Los Angeles-based Wiesenthal Center, flew to Tokyo last week at the invitation of Tanaka to

accept the formal apology and to appear with him at the Feb. 2 press conference.

"It was unbelievable," said Cooper on his return last Friday. "The press conference lasted two hours and 20 minutes and was attended by more than 400 journalists from the Japanese and Western media, and at least one Arab reporter."

Cooper said Tanaka had expressed his deep regret that "the article has caused immeasurable pain, not only to Jews who have suffered more than enough, but also to millions of others dedicated to truth and decency."

After acknowledging his own company's "overall lack of understanding" of the Holocaust, Tanaka promised to take remedial steps.

"We will do everything in our power to educate ourselves and our readers in Japan about the tragic history of injustices and suffering endured by the Jewish people," he said.

Tanaka added that "Japanese history and culture are so widely different and removed from those of the Jews that a proper perception of the realities involving the Jewish people will be possible here only through an extensive educational effort" with the assistance of organizations such as the Wiesenthal Center.

During the press conference, one Japanese reporter held up an anti-Semitic book published by a subsidiary of Bungei Shunju. Tanaka assured Cooper that such books would no longer be distributed.

A considerable stir was created in Tokyo by the abrupt closure of Marco Polo, a glossy magazine with a circulation of about 250,000 that is aimed at men in their 20s and 30s.

At least one journalist said he saw the crackdown and the advertisers' boycott as confirmation of international Jewish power.

Others noted that the magazine

had been plagued by falling circulation and financial difficulties.

But Tanaka said his decision had been based on the contents of the offensive article.

Neither the Wiesenthal Center nor other organizations that had protested the article, including the American Jewish Committee and the Anti-Defamation League, had asked for the shutdown of the magazine.

Meanwhile, the author of the article, a young physician named Masanori Nishioka, held his own press conference, at which he charged that the magazine "was crushed by Jewish organizations using advertising, and Bungei Shunju obliged."

"They crushed room for debate," the author also said.

Cooper told those in attendance at the press conference with Tanaka that he was puzzled by the recurring publication of "Jewish conspiracy" books and articles in a nation with only 1,000 to 2,000 Jewish residents and hardly any historical contact with Jews.

Most observers believe that the popularity of such books is rooted in frustration over the country's economic problems and trade conflict with the United States.

On the positive side, Cooper said, there were practically no anti-Jewish hate crimes in Japan, the translated version of "The Diary of Anne Frank" had sold nearly 5 million copies and a Holocaust exhibit last year drew heavy attendance.

Looking at the conflicting evidence, Cooper said even highly educated Japanese "don't have a clue" about the Jewish people and the Holocaust.

He said he expected a more detailed proposal in the next few months from Tanaka on how to raise editors' and readers' awareness of the Jewish experience.

BRIEFS

Israeli Fuel Trucks Ambushed in Gaza; One Israeli Dead, One Injured

(Israel Line) One Israeli civilian was killed and another seriously wounded Monday when Palestinian terrorists attacked an Israeli fuel supply convoy near the Nahal Oz checkpoint in the Palestinian Autonomous Zone. KOL YISRAEL, Israel Radio reports that the terrorists sprung their ambush on trucks, bypassing a Palestinian police car which was also in the convoy. The terrorists opened fire on the private Israeli security escort vehicles which returned fire. The fuel was en route to Palestinian gas stations in the north of the Gaza Strip. Hamas claimed responsibility for the attack. Prime Minister Yitzhak Rabin questioned the efforts and the determination of the Palestinian Authority in battling terrorism. Rabin said he will raise this issue when he meets on Thursday with PLO Chief Yasir Arafat. Arafat said that the attack was carried out by those who wish to push the Palestinians into a corner and who are committing criminal acts against their own people and against the peace process.

Palestinians Hold Supporters Of DFLP After Attack On Guard

By NAOMI SEGAL

JERUSALEM (JTA) — Palestinian police detained 45 supporters of the Democratic Front for the Liberation of Palestine after the group claimed responsibility for a terror attack in the Gaza Strip.

Palestine Liberation Organization Chairman Yasser Arafat said the Tuesday roundup of DFLP supporters was part of an ongoing fight against "fanatic and extremist forces."

The DFLP is part of a 10-member Damascus-based alliance of groups militantly opposed to the Israeli-Palestinian peace initiative. Leaders of the group said in a statement that a unit of the Red Brigades Star, the group's military wing, had ambushed a civilian convoy that same day which was escorting two fuel tankers from Israel to Gaza.

Yevgeny Dromov, an Israeli security guard who was killed in the attack, was buried in the Ashkelon cemetery Tuesday.

"We will not permit these groups to harm, not only the Israelis, but also the Palestinians and the peace process," Arafat told reporters.

Meanwhile, Israeli officials decided that trucks would no longer deliver gasoline to Gaza, but would drop it off at the Nahal Oz crossing at the Israeli border. Police Minister Moshe Shahal said, "We are not encouraging [Israeli] citizens to enter the strip," referring to the Gaza.

Ethiopian Jews Allowed to Marry Without Conversion, Rabbinate Agrees

(Israel Line) YEDIOT AHRONOT reports today that Israeli Ethiopian Jewish couples wishing to marry will now be able to do so without undergoing a new conversion process. This decision ends a long negotiation between Ethiopian Jewry and Israel's Chief Rabbinate on this issue. In recent weeks, the rabbinate has opened 10 centers for marriage registration for Ethiopian Jews.



LOD, Israel -- Israeli police guard a Royal Jordanian plane, the first ever to land at Ben Gurion airport Feb. 5. Jordan's King Hussein dispatched the plane to pick up a delegation of 29 Israeli Knesset members, whom the king invited to Jordan for an official state visit. CREDIT: RNS PHOTO/Reuters (Reproduction rights not transferable)

JHSD Seeks Project Volunteer

The Jewish Historical Society of Delaware is looking for a volunteer to help process a new collection of "Dear Mollye" letters. The collection is composed of letters written during WWII from Jewish servicemen to Mollye Sklut at the YM-YWHA. The letters need to be sorted and alphabetized for easier access. The project requires only a few hours of work. If you are interested in helping the JHSD, please call Julian Preisler at 655-7161 or 655-0365.

NJCRAC Plenum Hears Different Plans - Peres, Netanyahu and Sha'ath Address Group

By MATTHEW DORF

WASHINGTON (JTA) — Two of the chief architects of the Israel-Palestinian peace agreement and one of its leading opponents offered sharply different visions this week for the future of relations between Israel and the Palestine Liberation Organization.

One after the other, Israeli Foreign Minister Shimon Peres; Nabil Sha'ath, minister of planning for the Palestinian Authority; and Likud Party leader Benjamin Netanyahu addressed some 800 people gathered for the opening sessions of the National Jewish Community Relations Advisory Council's annual plenum here on Sunday. [Editor's Note: among the representatives of Delaware in attendance at the plenum were Jon Elzefon, Chair of JCRC; Rabbi Marla Feldman, Esq., JCRC Director; Jon Foreman, Super Sunday Chair; and Rick Geisenberger, of the Board of The Jewish Federation of Delaware (JFD).]

Speaking after a standing ovation, Peres called on American Jews to extend "clear and unwavering" support for the peace process.

Israel is waging a "battle for peace" in the face of terrorism, the foreign minister said.

"We have to fight for peace as we fight to win wars," he said. "We need to fill the political framework of peace with economic progress."

The people of the Middle East need to be shown that "peace is not just a ceremony of politicians," he added.

Peres also called on the PLO to "give a 100 percent effort to com-

bat terrorism."

"We don't expect 100 percent results, only effort," he said. "We demand a more concerned reaction."

In addition to NJCRAC delegates, ambassadors from Egypt, Jordan, Morocco, Tunisia and Qatar and the Washington representative of the PLO attended the Peres and Sha'ath speeches.

In contrast to Peres' plea for continued support for the peace process, Netanyahu called for an immediate halt in negotiations with the PLO and a reworking of the accords with the Palestinians.

Netanyahu, who has been topping Prime Minister Yitzhak Rabin in recent opinion polls among the Israeli public, received a standing ovation from about one-third of the plenum delegates when he called for an overhaul of the peace process.

Netanyahu called Yasser Arafat's Palestinian Authority a "dictatorial regime" and labeled its police force "terrorists."

The peace process is "leading to the creation of a huge terror base" in the West Bank that amounts to the "planting of a huge bomb in the Middle East that will explode on all of us," he said.

Netanyahu dedicated about half of his 45-minute speech to the issue of Jewish continuity and called for funding for every American Jewish teenager to be able to visit Israel for two weeks at no cost.

The third speaker, Sha'ath, speaking to the assembly via satellite from Cairo, called for a dramatic shift in the negotiations between Israel and the Palestinians.

Sha'ath called for an immediate

jump to the final-status negotiations. The time has come to "move boldly from the interim to the final-solution" talks, he said.

The Declaration of Principles specifies a two-year period of limited Palestinian self-rule before negotiating the final status of the territories. Among the issues to be addressed in final-status negotiations, slated to begin in May 1996, are Jerusalem and Jewish settlements.

Sha'ath acknowledged that the Palestinian Authority needs to "attempt to and do more to combat terrorism, despite the problems that we face" because that is "what is most important to Israel."

"It is important that we protect Israeli security as much as our own in order to get our own freedom," Sha'ath said.

Sha'ath called on Israel to end the closure on the West Bank and Gaza Strip imposed after the Beit Lid Junction bombing last month in which 21 Israelis died. He also called for an end to Israeli settlement building in the West Bank.

"Closure only breeds unemployment and a climate" for terrorists, he said.

Sha'ath also reiterated the PLO pledge to amend its covenant, which calls for the destruction of Israel.

"There's no lack of resolve. We are committed to changing it," he said, though he refused to say when this would occur.

Sha'ath and Peres are scheduled to meet in Washington next week with the Egyptian and Jordanian foreign ministers in an attempt to build on progress made at last week's Cairo summit.

Jockeying for Foreign Aid: Israel Assistance Spotlighted

By MATTHEW DORF and JENNIFER BATOG

WASHINGTON (JTA) — A coalition of international organizations released a study this week calling American foreign aid to Israel and Egypt a "nightmarish waste of US tax dollars." The organizations, calling themselves the Coalition to Rethink Aid to the Middle East, called on Congress to phase out the current \$5 billion-plus aid program to the Middle East in favor of refugee and humanitarian assistance abroad. Pro-Israel activists were quick to criticize the report.

Some Jewish activists noted that several of the groups involved have been outspoken opponents of aid to Israel in the past. Among the groups involved in the coalition are CARE as well as some major Christian organizations, including Presbyterian Church (USA), Evangelical Lutheran Church in America and Churches for Middle East Peace. Longtime pro-Israel activists say that although not new, the attempt to frame the debate as "either aid for Israel or aid for humanitarian causes" has received more attention than it has in the past.

Stacy Burdett, ADL's assistant director in Washington, questioned the

plan to cut aid to Israel and Egypt at this crucial juncture in the Middle East peace process.

"In terms of the Jewish community, it's not an either/or choice," said the Reform movement's Rabbi David Saperstein. Saperstein added, "It's morally right for Jews to actively fight for America to play a lead role

in helping hungry people, sustaining new democracies and working for human rights and sustainable developments." He continued, "If we care about aid to Israel, it behooves us to fight for foreign aid in general."

"Our main priority is to ensure aid for Israel," said an official with the American Israel Public Affairs Committee (AIPAC), the chief pro-Israel lobbying organizations. "The way you do that is to make sure that we have a viable foreign-aid program. They go hand in hand," the official said.



J-BOMBING - ANNIVERSARY -- BUENOS AIRES -- Members of the Argentine Jewish community pray Jan. 18 before a makeshift board with the names of the victims of a July 18, 1994, bomb blast that left 86 dead and hundreds injured. In observance of the six-month anniversary of the terrorist attack, hundreds gathered in the ruins of the Jewish community center. CREDIT: RNS PHOTO/Reuters (Reproduction rights not transferable)

EDITORIAL

Guest Editorial: JCRC Issues Statement On School Prayer Bill H.B. 24

By The Jewish Community Relations Committee (JCRC) of the JFD

"The statute at issue here is the most far-reaching one this court has encountered in its research. The aim of Mississippi's school-prayer statute is to permit prayer at virtually any and all school-related activities."

—Federal Judge Henry T. Wingate, barring the state of Mississippi from enforcing a law identical to one now before the Delaware state legislature.

Where the foes of religious tolerance failed in Mississippi, they are now trying their hands in Delaware. Only days after Delaware's new General Assembly was sworn in, two legislators have introduced a bill designed to return organized prayer to Delaware's classrooms. The bill is virtually a carbon copy of an unconstitutional bill which the legislature narrowly defeated last year. Last year's bill was acknowledged by a broad spectrum of people, including some of the bill's supporters, to be unconstitutional. One of them proclaimed, "I do think [the school prayer bill] is unconstitutional, but I could give a damn." Nevertheless, the same bill has once again been brought before the General Assembly. Thus, for the second time in less than a year, we are forced to bring to the attention of Delaware's Jewish community an effort by state legislators to illegally bring state-sponsored religion into Delaware's public school classrooms.

The bill, known as H.B. 24 and sponsored by Representatives Al Plant and Arthur Scott, allows for teacher-led benedictions and invocations at the beginning of school activities. Such benedictions and invocations are illegal. They have been illegal for at least 30 years, since the Supreme Court's decision in *Engel v. Vitale*. It does not matter if the prayer is "non-denominational" or "non-sectarian"; the prayer which the Supreme Court disallowed in 1962 was non-denominational. It does not matter if the prayer is "voluntary"; the prayer which the Supreme Court disallowed in 1963 was voluntary. The illegality of benedictions and invocations is a matter of settled constitutional law, and the legislators know this. Just five months ago, a federal judge in Mississippi

barred the state from enforcing these very same provisions in a Mississippi school prayer bill, stating that "settled case law clearly establishes that clergy, school officials and teachers may not lead students in prayer."

Other portions of the bill, allowing for "student-initiated" prayer, are also unconstitutional. The term "student-initiated prayer" is a technical term that the authors of the bill inserted to make it look like another state's bill that was approved by a federal court in a different part of the country — but the federal court that governs this part of the country, the Third Circuit Court of appeals, has already stated that "student-initiated" prayer at school assemblies is just as illegal as teacher-initiated prayer.

The proposed school prayer bill violates the Delaware state constitution even more blatantly than it violates the United States constitution. Delaware's state constitution speaks much more strongly about compelled religious worship than the federal constitution: it says that "[N]o man shall or ought to be compelled to attend any religious worship." That, of course, is precisely what the authors of H.B. 24 are trying to do — to compel students to participate in religious ceremonies.

Leaving aside all the legal issues, we also should consider the practical effect of this bill being passed. At best, teachers will lead students in religious services which are often completely at odds with those that the students practice at home. At worst, different students will lead different types of prayer services on a rotating basis, so students will participate in a different type of prayer service every day. Students who do not participate, of course, will be subjected to the peer pressure and ridicule of their classmates. This religious activity will be upsetting and bewildering to students, and will inevitably provoke tensions between both students and parents. Our public schools have a sufficient challenge in trying to educate our children. They should not be turned into a religious battleground.

No other state in the United States of America is enforcing a law like the one being proposed for Delaware. If this law is passed

— until it is stricken down by the Courts — Delaware will be the only state in America that allows students from religious minority groups to be subjected to organized classroom prayers from religions other than their own. As members of one of Delaware's religious minorities, we have a responsibility to ensure that the religious freedoms of our children and our families are protected, and this bill threatens religious freedom in Delaware like no other in recent memory. Last year, the Jewish community did not act to protect its religious freedoms until it was almost too late. This year, we must be more vigilant. Call your state rep-

resentative today and tell him or her that you are opposed to H.B. 24.



German Bishops' Statement Welcome

The Conference of German Bishops admitted last month the "shared responsibility" of the Catholic Church for anti-Semitism during World War II. In a statement issued in Bonn, the bishops said they regretted the "absence of resistance by many Catholics against the Nazis." "Many Catholics allowed themselves to be taken over by Nazi ideology," the statement also said. As the statement was issued political leaders and religious leaders from around the world gathered in Poland to commemorate the 50th anniversary of liberation of the Auschwitz concentration camp by Soviet troops. The bishops also admitted that during the Third Reich anti-Semitic attitudes were harbored. According to the Bishops, in the absence of Church leadership on the issue, many Christians failed to show the necessary resistance against the Nazis' ideology.

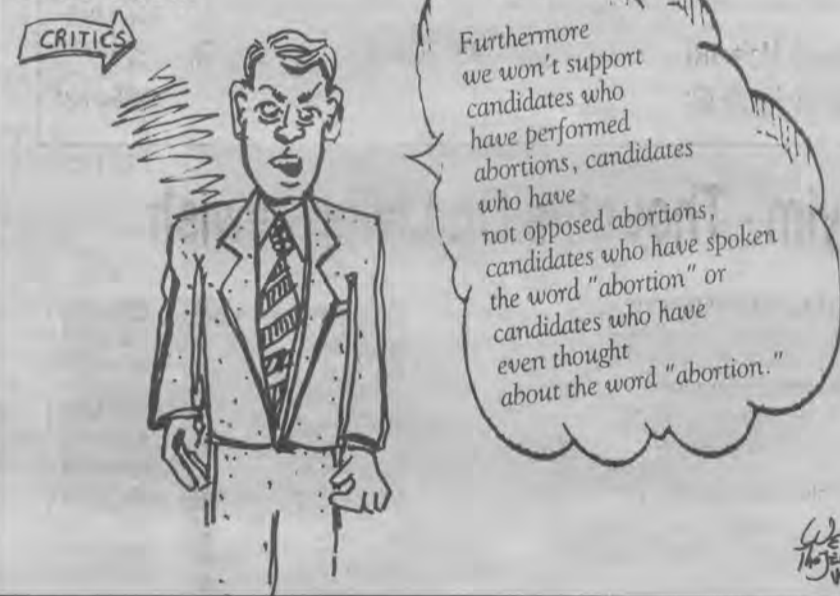
The Editorial Committee of *The Jewish Voice* welcomes this statement by the German Bishops as constructive. The German Bishops' statement provides a good model for Polish Catholics as well. Official Auschwitz ceremonies suffered from what many Jews believe to be a long time ongoing effort of Poles to "Polonize" or "Christianize" Auschwitz. For Jews, as well as for most of the world, Auschwitz has become the paramount symbol of the Holocaust. Thousands

of Roman Catholic Poles were also killed there and Poles generally view Auschwitz as a symbol of Polish suffering under the Nazis. (A survey of Polish attitudes by the American Jewish Committee showed that 40 percent of Polish respondents believe Poles and Jews suffered equally under the Nazis.) Such Poles hold this perception despite the fact that ninety percent of Auschwitz victims were Jews killed as a part of the Nazi's so-called Final Solution to eliminate all Jews from the earth.

Such a misunderstanding may be partially explained by the tours and signs at Auschwitz and other concentration camps which emphasize the nationality of the victims and make no mention that most of the victims were Jews. The suspicion is that historic and continuing widespread Polish anti-Semitism also informs such Poll results.

It is ironic that Pope John Paul II, the Polish born leader of Catholics around the world, has generally been regarded as among the best Popes with regard to his relations with Jews. With some exceptions, such as knight-ing Kurt Waldheim, the Pope has been very positive in his approach to the Jewish people. His moral leadership may have influenced German Bishops but Catholics in his home country have quite a way to go.

Item: Surgeon General Nominee Under Fire...



The JEWISH VOICE

Published semimonthly, and monthly in July and August, by the Jewish Federation of Delaware.

Daniel H. Weintraub, Esq., **Editor**
Irv Epstein, **Advertising Manager**
Judy Wortman, **Executive Vice-President**
Jewish Federation of Delaware

Celia Gans, **Reporter and Photography**
Priscilla Siegel, **Community Reporter**
Tillie Epstein, **Advertising Representative**

Steve Cohen, **Entertainment Reporter**
Jordan Sopinsky, **Intern**
Mike Lazurus, **Volunteer Advertising**
Ruth Rosenbaum, **Proofreader**

Editorial Committee:

Barbara S. Keil, **Chair**; Terry Dannemann, Matt Denn, Jay Eisenhofer, Irving Kaufman, Connie Kreshtool, Ellen S. Meyer, Dov Seidel.

Business Committee:

Suzanne Grant, **Chair**; Mark Levitt, David Rosenblatt, Dale Rosenthal, Michael Schwartz, Lawrence I. Zutz.

Editorial opinions expressed in this newspaper are those of the newspaper and not those of any individual or other organization. Signed editorials and letters do not represent the view of the newspaper, but rather express the view of the writer. No material will be accepted by The Jewish Voice which is considered against the best interests of the Jewish community. The Jewish Voice does not guarantee the kashruth of any of its advertisers. Printed material and video tapes sold by our advertisers have not been reviewed by the Jewish Voice, nor are they endorsed in any way by the Jewish Voice.



Member of the American Jewish Press Association and Jewish Telegraphic Agency.
©1994 The Jewish Voice Printed by Dover Post Company
Second class postage paid for The Jewish Voice (USPS-704160) at Wilmington, Delaware. Subscription price: \$10.00. Circulation: 3,200. Mailed to subscribers and contributors to the Jewish Federation of Delaware.
POSTMASTER: Send address changes to The Jewish Voice, 101 Garden of Eden Road, Wilmington, DE 19803. (302) 478-6200. The FAX number of The Jewish Voice is (302) 478-5374.
E-Mail #jewishvoice@mcimail.com or 7056105@mcimail.com

12 NOON THURSDAY		THURSDAY NOON DEADLINE	12 NOON THURSDAY
DEADLINE	FOCUS	ISSUE	
February 16	Bridal Section	February 24	
March 2	Camp Planner Guide and Purim Preview	March 10	
March 16	Spring Fashion	March 24	

All submissions due 12 noon
downstairs at JFD front desk

OPINION

(Listed below are the names and telephone numbers of Delaware's State Representatives should you wish to contact them with your views on public school prayer legislation.)

**State of Delaware
Representatives of the 138th General Assembly**
(Delaware Area Code: 302)

District	Name	Phone		Name	Phone
1	Orlando J. George, Jr. (D)	762-9000	23	Timothy U. Boulden (R)	738-8553
		577-2057	24	William A. Oberle, Jr. (R)	738-6241
2	Al O. Plant, Sr. (D)	764-4180	25	Stephanie A. Ulbrich (R)	
3	Arthur Scott (D)	658-7187	26	Richard F. Davis (R)	737-4905
4	Joseph G. Di Pinto (R)	655-8749			695-2035
5	Casimir S. Jonkiert (D)	656-6445	27	Vincent A. Lofink (R)	834-4444
6	David H. Ennis (R)	764-5829			836-3413
7	Wayne A. Smith (R)	475-5460	28	Bruce C. Ennis (D)	653-7566
8	David D. Brady (D)	798-5532			674-0140
9	Oak M. Banning, Jr. (D)	378-9861	29	Charles M. Welch (R)	678-2900
10	Jane Maroney (R)	478-2672			678-5885
11	Philip D. Cloutier (R)	478-9616	30	George Robert Quillen (R)	398-8400
12	Deborah H. Capano (R)	651-9571	31	Nancy H. Wagner (R)	734-1823
13	John F. Van Sant (D)	998-2473	32	Donna D. Stone (R)	736-1044
14	Richard A. Diliberto, Jr. (D)	368-3432	33	G. Wallace Caulk, Jr. (R)	335-3305
15	Bruce C. Reynolds (R)	836-1780	34	Gerald A. Buckworth (R)	697-2033
		323-2813			734-8500
16	William I. Houghton (D)	652-0234	35	J. Benjamin Ewing, Jr. (R)	337-7395
17	Jeffrey G. Mack (R)	328-1657	36	V. George Carey (R)	684-8358
18	Terry R. Spence (R)	328-8961			422-4191
19	Robert F. Gilligan (D)	999-8722	37	John R. Schroeder (D)	645-0670
20	Roger P. Roy (R)	239-9292			226-2600
		368-6200	38	George H. Bunting, Jr. (D)	227-3891
21	Pamela S. Maier (R)	737-7223	39	Tina Fallon (R)	629-8187
22	Joseph R. Petrilli (R)	239-4489	40	Clifford G. "Biff" Lee (R)	875-5119
			41	Charles P. West (D)	238-7424

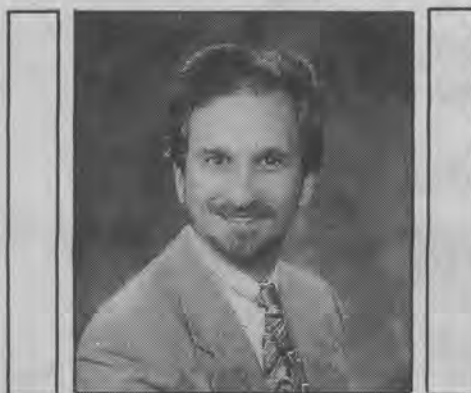
L'Chayim - Thoughts On Living Jewish

By Rabbi STEPHEN BOOTH
Special to The Jewish Voice

L'Chayim!! "Live Jewish." This was the theme of this year's Federation Campaign. We can assume it was chosen because it communicates a basic value and goal of those dedicated to the future of the Jewish people. If we were to take seriously the prescription to "Live Jewish," somehow our lives would be richer and the Jewish future would be more assured.

Most of our great-grandparents however would have considered such a prescription a bit absurd. "Live Jewish? How else could a Jew live?" For in times before ours, living a Jewish life and identifying fully as a Jew was for the most part not a matter of choice. We lived in Jewish communities, surrounded by Jewish family and neighbors, and lived the cycles of the Jewish year and life cycle. We were never allowed to fully "assimilate" into the surrounding culture, so like it or not, we always knew we were Jews. Therefore to have much of a life, we had to "live it Jewish."

For us Jewish Americans, for the first time in history, we are faced with a challenge - a danger and an opportunity. For the first time in history, we can live as fully equal citizens in a democratic society. But for the first time in history, we are also free to not live as Jews



(without conversion) while enjoying full rights as citizens. Today, if we are Jewish at all, we are all Jews by choice. Some have recently suggested that today, the definition of "who is a Jew" might more meaningfully be determined by asking the question, "will you have Jewish grandchildren?" Today, to be Jewish, we have to actively chose to live as Jews.

The cover of the current issue of Response magazine asks the question: "Jewish Student Activism: Dead or Alive?" I was obviously drawn quickly to the topic as a Hillel director, and was struck by several of the articles. One in particular jolted my attention. In an article

Jacob's Stones

By DAVID MARGULES

Jacob departed from Beer-sheba and went toward Haran. He encountered the place and spent the night there because the sun had set; he took from the stones of the place which he arranged around his head, and lay down in that place. Genesis XXVIII 10-11.

Midrash tells us that on the night on which he dreamed of a ladder reaching from earth to heaven, Jacob arranged stones around his head to protect himself from wild animals. Those few stones offered no real protection, but G-d safeguarded Jacob from attack. In discussing why Jacob bothered to make a shield that served no purpose, the commentators explain that G-d prefers to mask miracles in the form of natural events. Often in our own lives, the hand of G-d appears in events that seem random or coincidental.

In the early 1970's, my sister bought a copy of Elie Wiesel's novel The Gates of the Forest. I don't know if she read it, but it sat on a shelf in her room in my parents' home for many years. While visiting my parents about 10 years ago, I shoved it into a carton of books that I was bringing to my home.

From then until this past August, the book sat on a shelf in my home. At that time, while looking for something to read on a business trip to New York, I grabbed it. My reason for choosing The Gates of the Forest was silly — I would be staying near the Fifth Avenue Synagogue where Wiesel belonged, intending to daven there, and hoped I might run into him. I did not seem him.

The Gates of the Forest is the story of Gregor, a Hungarian Jewish child who evades the Nazis by hiding in a cave, by posing as a relative of a former household servant and, finally, by joining a group of Jewish partisans.

Shortly after Rosh HaShanah, my mother was diagnosed as having a massive ovarian tumor. For various reasons, her doctors were virtually certain it was malignant, although we would not be certain until surgery and a biopsy. Surgery was scheduled for shortly after Sukkot.

Simchat Torah always has been my favorite holiday, but the anticipation I usually feel in the days leading up to it was lost. I continued reading the book, perhaps hoping to find so-



lace in the story of a child enduring suffering I could barely imagine.

On the night before Simchat Torah, I reached the climactic chapter of the book — an encounter in a Brooklyn schul between the now-grown Gregor and a hasidic Rebbe. During their dialogue, based on Wiesel's own first meeting with the late Lubavitcher Rebbe, Gregor indicts and convicts G-d for the murder of the 6 million. When the Rebbe asks whether Gregor wants him "to stop praying and start shouting," Gregor replies "Yes."

"Who says that power comes from a shout, an outcry rather than from a prayer ..." asks the Rebbe. "When you come to our celebrations you'll see how we dance and sing and rejoice. There is joy as well as fury in the hasid's dancing. Its his way of proclaiming, 'You don't want me to dance; too bad, I'll dance anyhow. You've taken away every reason for singing, but I shall sing ... You didn't expect my joy, but here it is; yes my joy will rise up; it will submerge you.'"

Like Gregor, I was angry at G-d for my suffering. But, as I sat in schul on Simchat Torah, the Rebbe's message to Gregor hit me. "After what happened to us, how can you believe in G-d," Gregor asks. "How can you not believe in G-d," the Rebbe responded.

In the book, Gregor finds that he can once again approach G-d with love, with song and with joy. Like Gregor, I allowed myself to separate the desolation I felt from my relationship with G-d. Like Gregor, I found the strength to continue.

Three days later, my mother had her surgery. Despite everything that the doctors expected, the tumor was benign. "You didn't expect that, did you," my sister asked the surgeon. "No, I didn't," he replied.

After meeting with the Rebbe, Gregor muses that "[a] chance meeting can change the whole world and bring all things into question."

The chance events that led to my reading that passage are remarkable. My sister happened to leave the book in my parents' home when she moved out. I happened to bring it to my house, where it gathered dust for a decade. I happened to start reading it at a particular time. The pace at which I progressed happened to result in my coming upon the critical portion when I needed solace most.

Perhaps the chain of events was purely random. Perhaps not. (David Margules is an attorney, a Delaware resident and a Vice-President of The Jewish Federation of Delaware (JFD))

Glick has struck a deep and distressing chord of contemporary truth. A disturbing number of today's youth are not just "alienated" from an identity they are stuck with, rather, they feel they are truly "neutral outsiders," who can chose or not to observe Jewish identity and life with interest, and they can chose to join in or not. Needless to say, this makes the larger task of Hillel, reaching that majority that never enter our doors, vastly more challenging.

(Continued on page 27)



Cohen Foundation Funds Community Institutions

January 19 marked the 38th anniversary of the death of Harry Cohen, one of the founders of the Delaware Jewish community. During his lifetime he devoted his time, energy and finances to the betterment of the Jewish community locally and in Israel. Less than a month after his death it was disclosed that his will had established the Harry Cohen Foundation of one and a quarter million dollars to benefit the same institutions he supported during his lifetime. Careful management of the Foundation has substantially increased its resources available for distribution over the subsequent years. Since 1959 the total distribution to all beneficiaries has been \$2,466,653.92. Through his *mitzvot* and through the foundation he established, Harry Cohen touched and continued to touch the lives of nearly all Jews in Delaware.

Sadie Toumarkine, the daughter of Harry and Yetta Cohen, recently announced distributions since 1959 as well as this year's gifts. Among the accomplishments of Sadie Toumarkine, a long-time community leader in her own right, was serving as the first woman President of the JCC. Since 1959, Mrs. Toumarkine reported, the distributions totaled \$246,738.16 to the Milton and Hattie Kutz Home, \$319,815.29 to the Jewish Community Center and \$370,568.93 to the Jewish Federation of Delaware. The new distributions include \$14,658.13 for the Jewish Federation of Delaware (JFD),

\$9870.64, to the Jewish Community Center (JCC) and \$9910.64 to the Kutz Home.

Cohen's will also provided support to Delaware hospitals, Toys for Tots, the Neediest Family Fund and the Jewish National Fund. Harry Cohen was born in Russia and emigrated to the United States in the early 1900's. He worked simultaneously as a leather worker, coal stove blackener and barber until he saved enough money to buy a small grocery store at 13th and Wilson Streets.

In 1932 Cohen enlisted Charles L. Belfint to join in a campaign to put the then vacant Adas Kodesch Center building at 515 French St. to good use. Belfint played an active role in developing the dedicated committee which in 1934 opened the Y.M./Y.W.H.A. with Lou Simon as president and Isadore Solod as executive director.

Cohen was one of the prime movers of the early Jewish Federation of Delaware (JFD), which in 1995 marks the 60th anniversary of its first annual campaign. Cohen was JFD treasurer for years, Campaign chairperson for two succeeding terms and the representative of JFD to the National Council of the United Palestine Appeal (a predecessor to the United Jewish Appeal (UJA)).

His dedication also extended to communal Jewish education. In 1940 he wrote to Milton Kutz, then JFD President, asking that a survey be taken of Jewish education in Wilmington. This resulted in Cohen's



Harry Cohen

establishment of the Associated Hebrew School in 1943.

In 1945 he offered \$50,000 toward a Campaign for a new Y.M. and Y.W.H.A. building. As the local Jewish population was shifting from downtown to the northern suburbs, Cohen felt a north Wilmington location would be most appropriate. The offer was not accepted but he set aside \$58,077.10 in his will for the purpose.

In 1946 Harry Cohen and Milton Kutz each pledged \$25,000.00 to the community campaign administered by the Jewish Federation of Delaware. These two pledges were the first such substantial contributions in Delaware. In 1948, New York's Judge Morris Gothenburg, president

of the Jewish National Fund, came to Delaware to present the deed for a 250 acre colony in Israel named after Delaware. Cohen and his committee had raised \$27,000.00 for this project.

By 1953, when he succumbed to a stroke, he had already accumulated his fortune. Because of the foundation he established, Harry Cohen continues, in essence, to raise money for worthwhile projects.

In a statement thanking the Harry Cohen foundation for its contributions to the community, Judy Wortman, Executive Director of JFD, said, "It is because of visionary leaders like Harry Cohen that our community thrives today"

Marvin and Muriel Gilman Honored With Chamber Award

Marvin and Muriel Gilman were awarded the Josiah Marvel Cup from the Delaware State Chamber of Commerce. An editorial in *The News Journal* noted that "the list of their accomplishments and awards would stretch from Claymont to Delmar and back again. How Marvin and Muriel found the time and energy to have productive and distinguished careers is a wonder, since the depth and breadth of their service accomplishments is amazing." Marvin Gilman has been a national leader in housing policy. Muriel Gilman has been associated with the United Way among other good causes. Within the past twelve months *The Jewish Voice* has printed two major articles profiling the Gilmans' positive contributions to the community.

Summer Scholarship Available

The Sylvia and Isadore N. Silverman Scholarship Fund will be awarding its Sixth Annual Scholarship to a deserving youth for a Jewish summer experience in camp or Israel. Applications may be picked-up at the Adas Kodesch Shel Emeth Office and should be returned by April 15. This fund was established in 1989 in honor of the 55th Wedding Anniversary of the Silvermans by their four daughters and many friends.

Rabbi Stephen Booth To Speak At B'nai B'rith Brunch

Rabbi Stephen Booth, Director, Hillel Student Center University of Delaware, will be the featured guest speaker at Wilmington B'nai B'rith Lodge 470 meeting and brunch on Sunday, February 12, 1995, at the Claymont Hilton. His topic is "Hillel and Community Involvement with Hillel."

Rabbi Booth is Director of the Hillel Student Center at the University of Delaware and their operation is growing in its attempt to meet the needs of over 1500 Jewish students at the college — the largest Jewish student population ever on campus. Generous and consistent support from organizations like the Wilmington lodge makes Hillel a driving force in the Jewish community.

Israeli Stock Exchange Lecture In Philadelphia

Dr. Shmuel Kandel, Associate Professor of Finance at Tel Aviv University and Visiting Professor at the Wharton School of the University of Pennsylvania, will speak on the Tel Aviv Stock Exchange at a luncheon at the Philadelphia Stock Exchange on February 22, 1995, 12 Noon to 2:00 p.m. The luncheon and lecture are co-sponsored by the Philadelphia-Israel Chamber of Commerce and the Harry Stern Family Institute for Israel Studies at Gratz College.

Dr. Kandel is winner of the coveted Sapir Center and the Institute for Business Research in Israel grants as well as the Batterymarch and the Allon Fellowships. He is currently pursuing research on the Predictabil-

ity of Stock Returns.

The Philadelphia-Israel Chamber of Commerce is a not-for-profit membership organization dedicated to facilitating business and trade relations between the Delaware Valley and Israel companies.

Cost of attending the program is \$35 (includes dairy lunch). For further information, contact Dr. Jerry Kutnick, (215) 635-7300.

Celebrating its Centennial, Gratz College is the oldest independent college of Jewish studies in America, offering graduate, undergraduate, continuing education, teacher training and secondary education programs throughout the Delaware Valley.

Your BEST BET for PURIM!
don't miss the **FUN & EXCITEMENT**

Saturday Nite, March 18th 8 p.m. til?

GAMBLING - MUSIC - tasty HORS D'OEUVRES

Congregation Beth Shalom

Monte Carlo Night

A SPECTACULAR MEN'S FASHION SHOW AND MIDNIGHT BREAKFAST

CONG. BETH SHALOM
18th & Baynard Blvd.
654-4462

Tickets \$18 in advance
\$20 at the door

Newspaper Internships
Call Dan at
478-6200

Rabbi Michael Melchior, Chief Rabbi of Oslo To Speak On Peace Process At AKSE, February 13

The Israel Consulate and Rabbinical Association of Delaware in cooperation with Congregation Adas Kodesch Shel Emeth will sponsor a talk by Rabbi Michael Melchior, Chief Rabbi of Oslo, Norway on Monday, February 13, 1995, 7:30 P.M. at AKSE.

Rabbi Melchior is the son of Rabbi Bent Melchior, Chief Rabbi of Denmark. He will be speaking on the topic, "The Future of the Israel-Arab Peace Process". Rabbi Melchior has

served as the Rabbi of Oslo, Norway since 1980 and concurrently since 1986 as the International Director of the Elie Wiesel Foundation for Humanity. Rabbi Melchior was instrumental in organizing a series of world-wide conferences on the theme of "The Anatomy of Hate". Participating in the conferences were such notables as President Carter, Gorbachev, Havel, Mandela and Mitterand. His trip to the United States is under the sponsorship of the Israel Foreign Ministry.

Jewish Renewal Movement At Temple Beth-El: Waskow And Berman

By DANIEL WARREN HALPRIN

Special To The Jewish Voice
On Friday, February 3, 1995, Jewish renewal leaders Arthur Waskow and Phyllis Berman came to Temple Beth El in Newark, to deliver a joint midrash and an insight into contemporary Jewish spirituality. The speakers are each other's spouses and both helped found the Jewish renewal Movement. Outside, was the first snow of the season, but inside, there were hot deserts and

talk of Israel's past. Phyllis Berman has written new liturgy and midrashic tales for or about women as co-author of *Tales of Tikkun* (Jason Aronson, forthcoming 1995), and as liturgist for *Moment*, *Worlds of Jewish Prayer*, and *Menorah*. She has been ordained as Eshet Hazon by the Jewish renewal women's community. She told the story of how, as a teenager, she had been heartbroken when she was jilted by a boy from

another synagogue for a girl at his synagogue, and how her mother responded to her jealousy of this other female. Her mother asked who had taught her that women are in competition with one another for men. Ms. Berman pointed to the story of Sarah and Hagar. Her mother was glad that she had cited this reference, because it was a story her mother had told her, as had her mother before her.

Mrs. Berman's mother then described the early adventures of Avram and Sarai, who later became Abraham and Sarah, and then the exploits of Sarai and Hagar, and finally the travels of all three of them together. In this story, they all loved one another. Sarah pretended to force Hagar out. Hagar and Sarah had already consented to Abraham's demand that their sons Isaac and Ishmael be circumcised because God commanded it, and then Sarah had a dream that Abraham was going to sacrifice Ishmael at God's command.

So Sarah told Abraham that Hagar had to go because she was jealous of Hagar and despised her presence; but in fact, Sarah did it for love, to protect Ishmael, and to keep Hagar's heart from being broken by the loss of her son. This was not officially recorded, but was passed on, mother to daughter, through the centuries, and in light of our greater recognition of equality of all people and both sexes in contemporary Judaism over the past, Ms. Berman said she felt it was time now to share it with the men, too.

Arthur Waskow is founder and director of the Shalom Center, a Fellow of ALEPH and author of *Down-to-Earth Judaism* (Morrow, forthcoming 1995), along with many other works of Jewish renewal. Arthur

wrote the opinion column "Earth and Eco-Kosher," in the May 13, 1994 issue of *The Jewish Voice*. At Temple Beth El he told the story of a Polish Rebbe in Israel 150 years ago. Having made Aliyah and established a synagogue in Safed, he is painting the ceiling above the altar in this synagogue when one of his students enters the sanctuary. He is shocked to find his master and teacher in this position which he considers degrading, doing 'menial labor' instead of thinking of high-minded ideals, but he is even more disenchanted to see his master painting the scene of the old city, including the mosque with the golden dome on top of the rock where the sanctuary of the Messianic Temple is to be.

He asks his master why this is. The Rebbe explains that in Safed the air is so clear that one can see

clearer there than anywhere else on earth, and from this place he has seen the Messiah dancing with the Jews at the Western Wall telling them to come build the Temple. And the Jews, sons of Isaac, grab shovels, and pickaxes, and mortar and charge towards the Temple Mount. But on the other side, the Arabs are gathering, sons of Ishmael, and they are not singing songs of joy, they are making shouts of fear and anger, because they see that there is destruction about to happen to them. And they grab stones, and sticks, knives, and they rush towards the Wall.

The two forces are about to collide into the open space and kill each other when the Messiah says to wait, this is his Temple. And there is silence. One of the Arabs comes

Continued on page 25



BERGER BROS INC.

Since 1919

OFFICE FURNITURE...
OFFICE SYSTEMS...



655-7166

3rd & Market, Wilmington, Delaware

Some People Prefer Service AND Quality together with a GREAT SALE PRICE...

OUR MID-WINTER SALE

is now in progress



Natural Ranch Mink*

FURS, SHEARLINGS, LEATHER, CLOTH AND OTHER EXCEPTIONAL OUTERWEAR

Jacques Ferber

1708 Walnut St. Philadelphia, PA (215) 735-4173
58 E. Lancaster Ave. Ardmore, PA 19003 (610) 642-5230
Two Greenville Crossing 4001 Kennett Pike Wilmington, DE (302) 652-4340

*Furs labeled to indicate country of origin.

BRILLIANT GIFT IDEA

for Valentine's Day

"I CAN'T BEAR TO BE WITHOUT YOU"



Purchase our

14 KT Yellow Gold
8 DIAMOND HEART
NECKLACE with
14K Gold Chain

\$99.98

and receive a Free Genuine Hershey's™ Hug Bear

ALL REPAIRS DONE ON PREMISES

PROFESSIONAL JEWELRY APPRAISALS BY OUR GRADUATE GEMOLOGISTS.

BRANMAR PLAZA Marsh & Silverside Rds. Wilmington OPEN MON thru FRI 10 AM-6 PM SAT 10 AM-6 PM (302) 475-3101

410 EDEN CIRCLE EDEN SQUARE SHOPPING CENTER OPEN MON thru FRI 10 AM-9:30 PM SAT 10 AM-6 PM (302) 836-9745

4377 KIRKWOOD PLAZA KIRKWOOD HWY. OPEN MON thru FRI 10 AM-9:30 PM SAT 10 AM-6 PM (302) 999-9901





PANIM EL PANIM

(Face to Face with JFD People)



JFS Has Information On Immigration Diversity Lottery

The 1996 Diversity program will be open for applications through March 1, 1995. A total of 55,000 immigrant visas (i.e. green cards) will be given to individuals who register timely and properly. The 1996 program includes nearly all countries of the world. For information on immigration generally and on this diversity lottery in particular contact Roberta Burman, of the Russian Resettlement Program of Jewish Family Service of Delaware (JFD) at 478-9411.

JCC Offers Passover Dinners

The Jewish Community Center in cooperation with Traditions Fine Kosher Catering (a division of CaterKart Cuisines), is offering Kosher for Passover Family Dinners which can be picked up at the JCC. We will be offering one traditional menu which includes homemade matzoh ball soup, baked chicken breast with lemon tarragon sauce, matzoh stuffing, oven roasted potatoes with garlic/herb sauce, and baby carrots. The cost is \$19.95 per person. All orders must be placed before Friday, March 28 at 4 p.m. No late orders will be accepted. Dinners

will be available for pick-up (cold) on Thursday, April 12th between 4 and 6 p.m. or (hot) on Friday, April 13th between 3 and 4 p.m. All items will be packaged in disposable aluminum oven proof containers. "Hold the Schmaltz", a low-fat Kosher cookbook, will be included FREE with all orders which are received before March 17, 1995. For your convenience, the JCC will also offer torts and cakes available from a New York City Bakery. Bakery orders must be placed before April 10 to insure delivery before the holiday. Prices range from \$4 to \$9 per item. To

place an order, call Susan Warner at Traditions Fine Kosher Catering (a division of CaterKart Cuisines) at (302) 475-7775 any business day between 9 a.m. and 5 p.m. To reduce administrative costs, payment in full must be received with each order. Credit card (Visa/MC/AMEX) payments will be accepted. The JCC is a beneficiary of the 1995 "Live Jewish" Community Campaign which is administered by The Jewish Federation of Delaware (JFD). This year marks the 60th anniversary of Delaware's first community campaign.

JFS Forms Interfaith Group

Groups are now forming for interfaith couples who are interested in discussing religious differences, holidays, family, and other issues which arise. If you are interested in joining with others to explore common problems, contact Myrna Ryder at Jewish Family Service, 478-9411. The Jewish Family Service is a beneficiary of the 1995 "Live Jewish" Community Campaign which is administered by the Jewish Federation of Delaware (JFD).

JCRC Winter Agenda

The Jewish Community Relations Committee (JCRC) of the Jewish Federation of Delaware (JFD) has a full range of projects and programs addressing the broad public affairs agenda of Delaware's Jewish community.

Early this month, members of the JCRC will attend the NJCRAC Plenum, joining other delegates from around North America who will consider and vote on the future public policy agenda for the organized Jewish community. They will hear briefings on the Middle East peace process by Shimon Peres, Benjamin Netanyahu and Nabil Sha'ath as well as addresses by administrative and congressional leaders such as Attorney General Janet Reno and Senator Daniel Patrick Moynihan. The highlight of the Plenum will be a series of meetings with Delaware's congressional delegation in Washington.

The JCRC task forces have been busy pursuing a more local agenda. With the aid of a grant from the Kutz Foundation, the JCRC is coordinating a program for African American and Jewish youth from AME Bethel Church and the Albert Einstein Academy. Matt Denn and Gloria Fine have initiated this project. The Public Education Task Force, chaired by Mark Wagman, continues to work throughout the state to assist the public schools understand and maintain the constitutional separation between church and state. The task force is currently reviewing the New Directions Content Standards and participating in a community coalition to monitor school board elections.

For more information about these or other JCRC activities, please contact John Elzufon, Chair, or Rabbi Marla Feldman, Director, at 478-6200. The JCRC is a beneficiary of the 1995 "Live Jewish" Community Campaign which is administered by the JFD. This is the 60th anniversary of the first annual Delaware campaign.

at
St. Francis Hospital
you're on the road to good health.

"It was comforting to know exactly what I could expect, from the day they first diagnosed my problem until I was discharged."

For more information call 652-5433.

Franciscan Health System*
St. Francis Hospital

Getting from one place to another is a lot easier if you know where you're going.

Especially if you have a good map.

At St. Francis Hospital, we discovered that we could improve patient care by following a certain route, as well. We call it "clinical pathways."

A clinical pathway is an interactive care process involving the patient and the health care team.

We discovered that we could improve patient care by mapping out each stage of treatment. Our patients appreciate it — and so do insurers! They've recognized our program as a sound, cost-effective route to high-quality care.





PANIM EL PANIM

(Face to Face with JFD People)



JCRC's New Legislative Task Force To Begin

A new task force is being organized by the Jewish Community Relations Committee (JCRC) to monitor legislative issues that arise in the Delaware State Legislature. "This task force will coordinate grass roots activity by the Jewish community around issues that are of concern to us," explained Barbara Reitzes, chair of the task force. "When issues like the school prayer bill come before the legislature, we must be prepared to make our voices heard most effectively." Reitzes referred to H.B.24, currently before the House Education Committee, which calls for prayer at compulsory and non-compulsory school events. [See the editorial opposing this bill which appears elsewhere in this issue.]

John Elzufon, JCRC Chair, reinforced the importance of the new

task force, "It is critical that we let our elected officials know how we stand. It is the responsibility of citizens of a democracy to speak out and be heard in the halls of power."

The first meeting of the task force will be convened on **Thursday, March 2, 1995 at 7:30 p.m.** at the Jewish Community Center. New members of the task force are welcome. Anyone interested in more information should contact Barbara Reitzes at 762-5421 or Rabbi Marla Feldman at 478-6200.

The JCRC is a beneficiary of the 1995 "Live Jewish" Community Campaign which is administered by The Jewish Federation of Delaware (JFD). This is the 60th anniversary of Delaware's first annual community campaign.



ALBERT EINSTEIN ACADEMY STUDENTS STUDY NATIVE AMERICANS -- As part of the Language Arts program, third graders at Albert Einstein Academy completed a unit on Native Americans. As the culminating project, the students researched a particular tribe and read a Native American tale from that tribe. In an oral presentation to the class, the children re-enacted the fable, telling the story and the moral of the legend. They made visual presentations as well. Shown is Jeffrey Large.



ALBERT EINSTEIN ACADEMY HATCHES CHICKS -- As part of the Science program at the Albert Einstein Academy, students observed chicken eggs in an incubator. They charted observations of temperature and movement and warbled excitedly as the baby chicks pecked their way out of the shells. Shown is Nathan Stromwasser.



EINSTEIN TRAINING FUTURE CARTOGRAPHERS -- Kinder-garteners in the Albert Einstein Academy Kindergarten are studying maps, directionality and geography. As part of their hands on learning each child constructed a scale model of the classroom. In this picture, Adam Sugarman explains his model to his teacher Mrs. Nancy Brock.

NEW YORK'S HIT COMEDY OPENS MARCH 4TH IN PHILA.!!

"Grandma Sylvia's Funeral is to die laughing over."
-N.Y. Post

"Funny & Irreverent! This is going to do for Jewish funerals what Tony n' Tina's did for Italian weddings."
- Pia Lindstrom, NBC TV

Grandma Sylvia's Funeral Kasher Mitzvah Meal Included

Laugh...Cry...Get Involved

"As wacky as a Mel Brooks Movie." - Jewish Week

HELSENROTT MORTUARY AT OLDE CITY PLAYHOUSE
21 NORTH 3RD ST. PHILA. PA CALL (215) 627-9801
Great Group Discounts! Call (215) 568-4114 Today!

TIME IS NOW
B'NAI B'RITH MAKING A DIFFERENCE

Now is the time for you to join with us. No other organization can offer you the opportunity to participate more directly and more meaningfully in work that makes a difference. Alone, each of us is powerless; together we can change the world.

MEMBERSHIP IS NOW OPEN TO BOTH MEN AND WOMEN. REDUCED DUES FOR COUPLES. INTRODUCTORY RATE FOR MEMBERS WHO ALSO BELONG TO B'NAI B'RITH WOMEN.
Call Art Samuelsohn, 475-2430
B'nai B'rith Lodge 470

B'NAI B'RITH
CELEBRATING 150 YEARS OF SERVICE
HONORING THE PAST
BUILDING THE FUTURE

Explore Retirement Options

Join us for a tour of our affordable rental retirement community offering spacious one and two bedroom apartments with full kitchens, washers & dryers, riverfront dining, 24 hour security and **no entry fee!**

Call today to schedule your tour
798-3500

Attend our next free seminar
ADVANCE DIRECTIVES
Wednesday, February 15th at 7:00 p.m.

Captain's Deck

A Rental Retirement Community for Older Adults
7807 Governor Printz Blvd. * Claymont, DE 19703

Winter Cataract Watch

This is the time of year daylight activities are limited by fewer hours. People with significant cataracts frequently tell us that they don't leave the house in the darkness of early morning and plan their return by 4:00 p.m. in order to avoid the glare of headlights and difficulty with reading distant street signs.

Other symptoms of cataracts that interfere with activities include:

- * Cloudy, fuzzy, foggy, or filmy vision
- * Changes in the way colors are seen
- * Problems driving at night because headlights seem too bright
- * Problems with glare from lamps or the sun

Cataract surgery is elective and determined primarily by the patient's needs. If you have cataracts and have been considering scheduling this out-patient procedure, why not have it done when your travelling is at a minimum? You'll be able to resume your regular activities within days -- and enjoy them more fully with improved vision!

DELAWARE OPTHALMOLOGY CONSULTANTS

Robert Abel, Jr., M.D. • Edward F. Becker, M.D.
Harry A. Lebowitz, M.D. • Gordon A. Bussard, M.D.
William F. Rath, M.D. • Andrew M. Barrett, M.D.
J. Brent Bond, M.D. • Mary B. Lansing, M.D.
Judith A. Holloway, O.D., M.S.

Concord Plaza - Naamans Building
3501 Silverside Road
Wilmington, DE 19810-4910
302 • 479-3937 (EYES)

CAMP GUIDE

SANFORD DAY CAMP

Sanford School, Hockessin, Del.

Ages 4 to 16 • 2-10 Week Program • June 19-August 25

Our varied program is designed to provide every camper with a day full of fun and exercise; supervised by dedicated teachers.



ACTIVITIES

- | | | | |
|---------------|--------------|----------------|------------|
| Arts & Crafts | Bombardment | Dancing | Swimming |
| Badminton | Computer | Field Trips | Tennis |
| Baseball | Hockey | Gymnastics | Volleyball |
| Basketball | Pony Rides | Roller Skating | Wiffleball |
| | Nature Study | Soccer | |

OPEN HOUSE - SUNDAY, FEB. 19, 2-4 PM SCHOOL LIBRARY

CONTACT:

Dave Szaroleta,
DIRECTOR
(302) 475-8013
for information
and brochure

or

(610) 565-4182
Peter Bradley,
DIRECTOR
after 7 p.m.

Transportation Provided (From Major Areas)
Children May Enroll For 2, 3, 4, 5, 6, 7, 8, 9,
or 10 weeks and the weeks need not be
consecutive. Academic program may not be
coordinated with day camp.
EXTENDED DAY AVAILABLE
Tuition - from \$125 per week
(Includes transportation)



Dave



Pete

SOCCKER CAMP

FIRST SESSION

Ages: 8-12 year old
Boys and Girls
Date: June 19-23
Time: 9-3:15
Cost: \$160

SECOND SESSION

Ages: 5-7 year old
Boys and Girls
Date: June 26-30
Time: 9-11:30
Cost: \$80

THIRD SESSION

Ages: 5-7 year old
Boys and Girls
Date: July 31-Aug. 4
Time: 9-11:30
Cost: \$80

FOURTH SESSION

Ages: 8-12 year old
Boys and Girls
Date: August 7-11
Time: 9-3:15
Cost: \$160

(Each camp includes: Soccer ball for each camper, camp T-shirt for each camper, beverage with lunch -- bring bag lunch, opportunity for swim (First and fourth sessions).)

FEATURING TONY WOLANSKI -- HEAD COACH, SALESIANUM
(FIRST and FOURTH SESSIONS)

CALL **475-8013**
FOR INFORMATION & APPLICATION



CAMP GUIDE

Locating Your Ancestral Towns With Global Explorer

By MIRIAM WEINER

In the twenty-five years I have been researching my roots, it has always excited me to find the names of my ancestral towns on maps and in Gazetteers. However, when I typed in the town name of "Priluki" in a new software program recently and saw a map appear on the screen with Priluki in the center (and even a suburb of "East Priluki") along with names of small villages nearby, it was really a thrill.

The software program is "Global Explorer" manufactured by DeLorme Mapping, P.O. Box 298, Freeport, ME 04032 (tel: 800-452-5931) and is the "most detailed world atlas ever" according to the packaging. While I can't swear this is the case, I was thrilled to find such a comprehensive atlas—especially a software program I could easily understand and use. I am absolutely not a computer maven.

Like many others, I don't have the time and/or patience to keep up with rapidly exploding computer industry

and the numerous new products that fill the shelves of computer stores with a square footage that sometimes would be easier to navigate with a map and/or roller skates. However, when I saw this software program at a friend's home, I had to have it. It meant an investment in a CD-ROM drive, speakers and other equipment, but now it is running and I find myself staring at the screen, sometimes lost in thought at how accessible these far-away places have become.

Global Explorer is a computerized map of the entire globe in varying levels of detail, with convenient panning, zooming, and other tools to help locate specific places or just explore the world. With a few keystrokes, I can search for a locality, zoom in for a closer look, pan out to include a larger region, and then transfer the data to another file for printing. This means I can reproduce several maps of my localities showing different scales and surrounding towns. The map legend provides text definitions of symbols and patterns

on the map.

In addition to traditional geographic data, Global Explorer offers several other types of information. The Gazetteer includes brief text descriptions for 20,000 points of interest which span categories from archaeological sites to volcanoes. On the map, a pop-up "name button" appears when the mouse passes over a symbol with a description. A click on the symbol displays the description and a double-click zooms in and centers the map on the item.

The Airnet interface is based on commercial air travel routes throughout the world, making it simple to fly to exciting locations on the globe...ideal for the armchair traveler. The Profiles use text, statistics and charts to display general information about the geography, government, economy and population of countries and dependencies around the globe.

The program includes national and provincial boundaries, water bodies, urban areas, major highways, elevation data, and land coverage patterns indicating wetlands, glaciers, oil fields and other features.

My father's family came for Shepetovka in Ukraine, about halfway between Kiev and Lvov. I remembered hearing about it being a railway center and when I located it in the Global Explorer program, sure enough I could see the train line passing through Shepetovka and could follow it through the other nearby towns where my relatives also lived.

Next, I searched for "Kiev" and then had the option of requesting a street map. The prompt even asked what street I was looking for. The Babi Yar memorial site is included along with other major government buildings, memorials and important places.

Another feature I like is an expanded region map which appears as a small inset in the lower righthand corner of the screen. The region map provides orientation for the current map on the screen.

Global Explorer offers many other features, but so far I have only used the ones relating to my genealogical research. For example, you can key in the names of two localities and immediately see the distance in miles/kilometers between them and then you can request to see the air route between them.

The program is easy to use and exciting because it opens up the world to your fingertips (and your mouse).

Miriam Weiner is an author and lecturer in the field of Jewish genealogy and Holocaust research. For information on how to research your family history and the availability of documents in former Soviet archives, send a stamped self-addressed envelope to Weiner at 136 Sandpiper Key, Secaucus, NJ 07094.



PLAN NOW FOR SUMMER '95

Our Focus is YOUR Child's Needs!
Because Camping needs are individual.

Call for FREE:

- Personal Guidance
- Brochures
- Videos

camp connection
Free Advisory Service for Summer Programs

Sleepaway Camps

Sports and Speciality Camps

Teen Tours

Pre-College Programs

1-800-775-6508

Community Service Programs

For More Information Call: Donna & Ed Okin

CAMP GREEN LAKE

Sure we have 7 basketball courts, 5 softball fields, 11 ropes, challenge courses, climbing walls, water ski, go-karts, horseback riding, WSI swimming programs, soccer, leagues, gaga, drama, arts and crafts, an M.D. and 2 R.N.s, great facilities and cabins, etc., etc., etc., -- but so do many other camps.

We specialize in
PERSONAL ATTENTION, INDIVIDUALIZED INSTRUCTION,
GREAT SUPERVISION and LIFETIME FRIENDSHIPS!!

Allen and Marlene
Gust

Mel and Penny
Brodsky

Join us in our trip
"Back to the Future."



(610) 667-2500

So many choices...

~ Ages 7 to 17 ~ 2 or 4 weeks ~ Boys or Girls ~
Sports, Fine Arts, Performing Arts, Swim,
Outdoor Living, Nature Study,
Shabbat Programs ...

All of these and more.

~ An outstanding staff and facility or vice-versa ~

FRIENDS, MORE FRIENDS, BETTER FRIENDS

Fun, Funner, Funnest.

The only choice

Camp Airy & Camp Louise The "Choice" of Choices

C a m p s

Airy & Louise

Boys & Girls

...call today for
your Airy & Louise application and our
new video... now you can see why we
really are your only choice!
410-466-9010



-- Summer Better Than Others --

5750 Park Heights Ave. • Baltimore, MD 21215 • Phone: 410-466-9010 • FAX: 410-466-0560

BUSINESS & PROFESSIONAL DIRECTORY

**Business is a Pleasure
When You Deal with a
PRO...**

DIANE E. BERGER



**MERCANTILE MORTGAGE
CORPORATION**

Office: (302) 479-8350 Home: (302) 764-8384
Residential Financing
and Re-Financing Since 1972

Service 7 Days



Branch Mgr.

"It's Who You Know"



**NETWORK
PERSONNEL**

**Terri Viohl
Manager**

8 YEARS EXPERIENCE

302-656-5555

1100 N. Grant Avenue • Wilmington, DE 19805

INSURANCE



**HARRY S. WILSON, INC.
INSURANCE**

510 Philidelphia Pike
Wilmington, DE 19809

(302) 762-9292

FAX (302) 762-9289

**LAWRENCE A. WILSON,
CPCU, CIC
PRESIDENT**

PHILIP BERGER

Weichert "Presidents" & "Ambassadors" Club

**Weichert,
Realtors**

OFF.: 302-478-3800 • RES.: 302-764-8384
Professional, competent, "enthusiastic"
real estate service
since 1969



"It's Who You Know"



**NETWORK
PERSONNEL**

**Kathy Rucinski
Consultant**

14 YEARS EXPERIENCE

302-656-5555

1100 N. Grant Avenue • Wilmington, DE 19805

S.T.Y., INC.

Import/Export of Israeli Products

- Mezzuzahs
w/parchment
- Chai or Star of David
Gold & Silver Jewelry

P.O. Box 0225
Claymont, DE
Phone (302) 798-9573
Fax (302) 798-1466



Shmuel Yosef

ACCOUNTANT - TAX

**Income Tax and Accounting Services
... Personal, Business and Corporate**

JOEL E. PANITZ, CPA

2405 Newton Road
Wilmington, DE 19810

(302) 478-4726



**JUDITH B. GILBERT
SALES REPRESENTATIVE**



**TRANSAMERICA
OCCIDENTAL LIFE**

Bellevue Park, Corp. Center
300 Bellevue Parkway
Suite 190
Wilmington, DE 19809-3704

(302) 798-3771
(800) 633-8584 toll free



**AUTO PAINTING
& BODYWORKS**

PH: (302) 762-5777
FAX: (302) 762-4397

**CRAIG S. SCHLOTT
OWNER**

MAACO AUTO PAINTING & BODYWORKS
2400 GOV PRINTZ BLVD. WILMINGTON, DE 19802

PRINTING

BARBARA A. TOGMAN

Print Data Corp.

General Printing, Business Forms,
Computer Supplies

(302) 764-5773

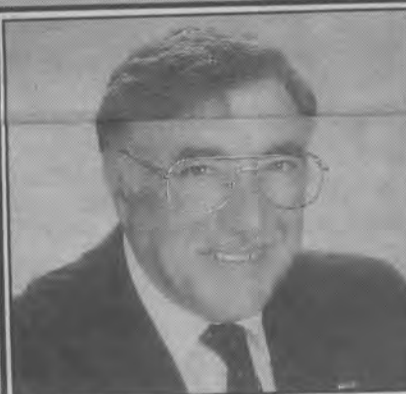
Fax: (302) 764-4766

REAL ESTATE

**BERNIE
FREIMARK**

1994

President's
Club Award



CELEBRATING 20 YEARS AS A REALTOR®

BRANDYWINE OFFICE
3302 CONCORD PIKE

478-3800

**Weichert,
Realtors®**

ATTORNEYS

BORIN & McDONALD P.A.
ATTORNEYS AT LAW

Marsha Zutz Borin
Robert C. McDonald
Barbara J. Gadbois

3 MILL ROAD
SUITE 304
WILMINGTON, DE 19806
TELEPHONE • 302-888-2900
FAX • 302-888-2902

DENTISTS

GARY D. SAFIAN D.D.S.

FAMILY DENTISTRY

707 FOULK ROAD
WILMINGTON, DE 19803

(302) 652-8656

**BRANDYWINE DELAWARE
TRAVEL TRAVEL**

featuring a
CLINARD

**Queen
Elizabeth 2**
7 day New England
**FOURTH OF
JULY
CRUISE**

Call for discount rate
**DELAWARE TRAVEL
AGENCY, INC.**



4001 Concord Pike
479-0200

BAR/BAT MITZVAHS
WEDDINGS

FAMILY PORTRAITS
SPECIAL EVENTS



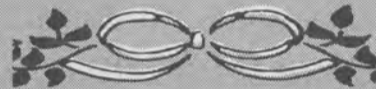
Peggy Montgomery
Michael Ford
2424 Grubb Road
Wilmington, DE 19810
(302) 475-2424
Fax (302) 475-8042

Montgomery/Ford
photography

10% discount to first-time clients



WINTER
WEDDINGS

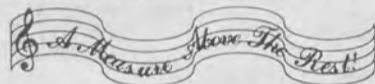


Marc Shaw
& Orchestra

For The Best Of Times /The Best Entertainment

- Weddings
- Parties
- Corporate
- Banquets
- Bar and Bat Mitzvahs
(Ask About Band/D) Package)

Call 1-800-776-6220
In NJ (609) 985-5140



James D. Spicer
Executive Chef

The
Omelette
King

Professional
Omelette Chefs

Complete Catering
Services

(302) 655-8802

Made To Order Omelettes
Complete Breakfast Menus
Innovative Catering For
All Occasions

Business/Social Meetings
Bar Mitzvah/Bat Mitzvah
Theme Parties/Deli Lunches



A Most Uncommonly
Entertaining Dance Band

Classical to Contemporary,
Big Band to Broadway,
Motown to Top 40 and more . . .
The Right Touch for All Occasions.



610-296-2626

Elegant! Energetic! Exciting!

On your special day,
you call the shots

...and we make sure to get them!

Discreet wedding and bar/bat mitvah
video documentation

Call Sue Oldenburg to arrange an appointment to view
an event we have done at your service/ reception sites!*

O.K. VIDEO

406 Philadelphia Pike, Wilmington
(302) 762-2333

*Whenever possible

THE PERFECT
MARRIAGE.

A magnificent wedding and a
very affordable price starting at only \$55
per person, at the hotel or any other location
you choose. An opulent reception including a
fabulous menu, flowers, limousine, impeccable
service and an exquisitely designed wedding cake.

The convenience of free parking for everyone.
And afterwards, a complimentary suite for the
newlyweds. A dream come true for less than you
ever imagined.

It starts with a call to Nadine Isvarin at
302/654-8300, and
ask for The Delaware
Wedding Package. OUR
WORLD REVOLVES
AROUND YOU.



The best in traditional and contemporary music
played with excellence, authenticity and enthusiasm.

CALL (215) 389-7750

AT THE JCC A BEAUTIFUL EVENT IS NOT JUST ANOTHER PRETTY FACE

Are you bored with the same events year after year? After a while, they all start to look the same..... Same place, same food, same band.
 For a pleasant change, plan your next Mitzvah at the JCC. Let us lavish you with tempting hors d'oeuvres, a wonderful buffet and our incomparable decoration package all orchestrated by Susan Warner of TRADITIONS FINE KOSHER CATERING (A Division of CaterKart Cuisines).!
 The very best part is the fun you'll have. Our DJ has an instinct for creating a spectacular affair. He'll even get Uncle Herman dancing! Don't short change the JCC. We're not just another pretty face..... We've got character, style and that good-time magic to make your party stand out in the crowd!

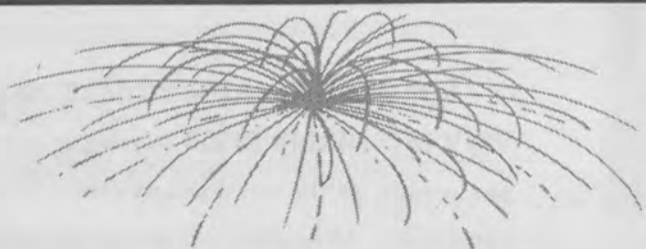
**IT'S EASY AND AFFORDABLE!
 CALL SUSAN AT 475-7775
 FOR A FREE TOUR OF THE FACILITY
 OUR PICTURES ARE WORTH 1,000 WORDS**

ALL YOUR WEDDING NEEDS

- WIDEST SELECTION OF KETUBOT
- ENGAGEMENT RINGS
- WEDDING RINGS
- KIDDISH CUPS
- BRIDAL REGISTRY

Bala Judaica and Jewelry

222 BALA AVENUE, BALA CYNWYD
 (610) 664-1303



A Special Invitation

Make your party invitations special by personalizing them with invitations from Sue's STationary

- ◆ Select your own personal fonts and colors to match your affair.
- ◆ We give personalized attention to every customer.
- ◆ Select our Inscribe Machine and your invitations look just like hand calligraphy.
- ◆ We also offer a variety of engraved invitations for Weddings, Bar/Bat Mitzvah's, Birthday's, Shower's, etc.
- ◆ Fast turnaround for orders needed in a hurry.
- ◆ 10% discount for mentioning this ad.

**By Appointment
 Sue Barnett
 (302) 475-5465**



Transportation For Bar Mitzvahs & Bat Mitzvahs

As you make plans to hold your very special event, may we suggest that you pay particular attention to the transportation needs of your guests. Kids Kab offers safe, reliable door-to-door transportation services for children and adults.

It's The Finishing Touch To A Wonderful Affair



For the convenience of your guests, call today
(302) 239-9133

Let our bridal team design something EXTRA special for your special day.

Call for a FREE consultation.



**Village Green Flower Shop
 764-5498**

At Lea Blvd. & Miller Rd.
 764-5498

Lady's Image cocktail casual career

Special Fashions
for
Special People
for
Special Occasions

- Bar/Bat Mitzvahs
- Mother of the Bride
- Cocktail



Lady's Image

3190 Concord Pike
Wilmington

For The Personal Attention You Deserve
call 478-7921

WINTER WEDDINGS

Authorized Ticket Agency For The Delaware Valley

B & B
ticket town

322 NINTH ST. PLAZA
WILMINGTON, DE 19801
TELEPHONE:
(302) 656-9797 OR
(215) 459-3283
TERRY SKLAR

Fantasia
Bridal & Cocktail




(302) 478-4126
M-F 11-8, SAT 10-5
3916 Concord Pike
Wilmington, DE

When the everyday just won't do...
Use Calligraphy

Ketubot by Riva Brown
Invitations, Addressing, Tablecards
Hand & Computerized Calligraphy...
Living Letters Studio 656-2777

Two original ideas
for your
Wedding day.



The DuPont Country Club and Brantwyn. Either choice will make your special day one you'll treasure forever. Both in a secluded, natural setting. Featuring elegant rooms and a choice of exceptional cuisine.

Plus personalized wedding planning. To get two great ideas for your wedding, call one number:
302-654-4435.

DuPont Country Club & Brantwyn
Rockland Road Wilmington, Delaware

No membership required.

Where The Gowns Are!



We feature the area's most beautiful gowns
Bridal • Bridesmaids • Flower Girls • Mothers
• Bridal Accessories • Shoes • Jewelry • Invitations
Specializing in Tuxedo Rentals and Sales.
serving Delmarva for 79 years

Simon's
bridal shoppe

215 Lookerman • Downtown Dover (302) 678-8160 Mon.-Fri 10-8 • Sat. 10-6 • Sun. 12-4
1-800-876-3152

P.S. Tell your younger sister about our huge prom gown selection.

WINTER WEDDINGS

Invitations - Announcements
Stationery - Business & Social
Party Accessories
Personalized Items, Etc.



"The finest selection of exclusive papers and gifts"

Charlotte Fischer 656-8604



The FOX POINT GRILL

*Regional American - Style Cooking
with a Southwestern Flair*

**PRIVATE PARTIES
SATURDAY AFTERNOON RECEPTIONS
SUNDAY WEDDING PARTIES**

Open Monday thru Saturday 11:30 to 10 p.m.
RATED * 1/2 by NEWS JOURNAL 1-1-95**

321 E. Lea Boulevard
Wilmington, Delaware 19802
302-762-5655

Apples to Apples



**No Comparison
Take-A-Break's
Catering
is better!**

CATERING
Gracious Service
Beautiful Presentation
Delicious Food

Business Meetings - Breaks
Luncheons - Breakfasts
Holiday Buffets - Picnics

TAKE-A-BREAK
Food & Refreshment Services
(302) 658-8571



"Il Verò Mangiare Italiano"

In Italy, it means "The essence of eating Italian." At Pasta Blitz by Lamberti, we have captured that flavor.



When you enter Pasta Blitz, you are greeted by the aroma from the kitchen. Garlic, basil and a whole kitchenful of good things.



Our pizza and bread are baked to perfection in wood-burning brick ovens. We invite you to experience our warm, Italian hospitality.

Now Serving Your Favorite Wines and Spirits

We invite you to visit Pasta Blitz by Lamberti.
(302) 762-9094
514 Philadelphia Pike
Wilmington, DE



FAX (302) 762-8608



Quality Printing, Inc.

From Concept To Completion

Your Full Service Printer offering a wide selection of Wedding & Social Invitations with individual attention.



Printing • Desktop Publishing
Design • Copies

Talleyville Shopping Center
3609 Silverside Road
Wilmington, Delaware 19810

302-478-0720
FAX 302-478-2840



Exotic, Mysterious, Wonderful

Casablanca

Restaurant

Enjoy a 7 Course Dinner
Featuring:
**Chicken, Lamb, Beef
Shishkabobs, Couscous
and Moroccan Baklava**
\$20 per person

1st and 3rd Saturdays
of each month...
Middle Eastern and
Traditional
Male Belly Dancing
featuring Omar

CASABLANCA is a pleasant trip to an exotic land,
an intimate and lavish atmosphere with belly
dancers providing the entertainment.
Come...discover the mysteries of Morocco. It's an
experience you won't soon forget.



Holiday parties for up to 300 people
Belly Dancers Fri. & Sat. Nights

VOTED #1 DEL. TODAY EXOTIC RESTAURANT • TOP 10 FOR THE MONEY • TOP 10 NEW RESTAURANT
4010 DuPont Hwy., New Castle
(302) 652-5344
Hours: Every Day 5:30 PM-1:30 AM

VISIT OUR NEW ADDITION (with a Piano Bar)



TivaMisu

RISTORANTE

ROMAN ITALIAN JEWISH CUISINE

We Suggest Timely
GIFT CERTIFICATES

**VALET PARKING
AVAILABLE**

528 South 5th Street, Philadelphia, PA 19147
For Reservations Call: (215) 925-3335
Open 7 Days A Week For Dinner,
Weekdays For Lunch

Reserve Now For Valentine's Day



Mrs. Snyder's

CHOCOLATE CHIPPERY

Low Fat Muffins
Cookies • Croissants
Gourmet Coffees
Teas • Cinnamon Buns

Shipped
Hand Delivered



Gift Baskets
Specialty Designed Basket
Fresh Gourmet Baked Goods

651-9996

Rockford Shoppes, Trolley Square
1420 N. DuPont St., Wilmington

New Castle Farmers Market

Come out for a day of family
fun and shopping bargains

DON'T MISS
DELAWARE'S
BIGGEST & BEST
FARMERS MARKET
& FLEA MARKET

Voted Best of Delaware

FRI & SAT. 10 A.M.-10 P.M.
SUNDAY 10 A.M.-6 P.M.

Rt. 13 (across from Wilmington Airport)
New Castle, DE 328-4101

ALL PRODUCTS ARE FRESH-BAKED ON
PREMISES EVERY MORNING • 7 DAYS A WEEK

Under The Supervision of Va'ad Ha Kashrut For Baked Take-Out Goods Excluding Donuts!

Voted Best Bagels & Coffee in Delaware

Try our breakfast & lunch specials & our
new cookie & pastry selection.



Bagels & Donuts Inc.

SILVERSIDE & MARSH RD. 478-9016 • 1901 PENNA AVE. 652-7960



DUPONT BLDG. • WILMINGTON, DE 19801

TUE., FEB. 7
thru
WED., FEB. 15

ALL SINGING! ALL DANCING! ALL GERSHWIN!

CRAZY FOR YOU



Pre Theatre Buffet Available in
Hotel DuPont Grill
Call (302) 594-3100

Tuesday, Feb. 7 thru Wednesday, Feb. 15, 1995

Evenings at 8PM, Wed. and Sat. Mats. 2PM, Sun. at 2PM & 7:30PM

PRICES RANGE FROM \$32.00 TO \$50.00

A Subscription Selection / Call (302) 656-4401

1991 GERSHWIN BROTHERS MUSIC AND JAMS-WITHARR, M.C. LIBRARY, INC. ALL RIGHTS RESERVED



Italian bistro

THE BEST CASUAL FAMILY DINING IN DELAWARE

featuring

- Wood Fired Pizza Oven
- Wood Burning Rotisserie
- Wood Fired Grill
- Fresh Pasta & Seafood

Open 7 days a week. Reservations for Holiday Parties

BRANMAR PLAZA, WILMINGTON, DELAWARE • 302-529-1900

COME
CELEBRATE
VALENTINE'S
DAY

BANQUETS
for up to
150 guests

JEWISH FEDERATION OF DELAWARE CAMPAIGN WEEK JANUARY 6-15



Dr. Richard Gordon, Co-Chair of the Chai Society Brunch passes a challah to Julius Lester, featured speaker as Laney Gordon, Co-Chair, looks on.



Betty Kane, National Chair Elect of Women's Division UJA, is speaker at the Lion of Judah luncheon.



Mr. Benjamin F. Cohen receives his certificate of appreciation from JFD Executive Judy Wortman at the Chai Society Brunch. His wife Rose Cohen shares in his honor. Rabbi David Wortman stands at right.



Leslie Goldenberg and daughter Gennifer attend the Lion of Judah Luncheon on January 11, 1995.



\$940,000 to Date

"A NIGHT TO REMEMBER"

THANKS FOR
MAKING IT
MEMORABLE.



Annette Aerenson (L) and Amy Leviton (R) enjoy their luncheon at Brantwyn for the Lion of Judah event.



Congressman Castle and JFD President, Toni Young enjoy "A Night to Remember," January 14, 1995.



Waiting for a pickle from the pickle barrel at "A Night to Remember."

Thank You for Making a Night to Remember Memorable

The following individuals or businesses contributed their special resources to make our community event a success. Their generosity and community spirit is greatly appreciated.

Joan Wachstein and Barbara Yalisove, Co-chairs

AEA Students
AKSE and staff
Artie Allen

Lisa Alpert
Mutzie Bellak
Jean Blumenfeld
Blumenfeld Family
Sandi Bernstein
Kitty Breger/Breger Flowers
Rabbi Steven Booth
Anita Closic/Fairytales
Phyllis Cobin
Congregation Beth Emeth Maintenance Staff
Eileen Conner
Robert Coonin
Rabbi Marla Feldman
Al Fineman

Lillian Freid
Fay Galperin
Helen Goldberg
Perry Goldlust
Helen Gordon
Florence Green
Francine Gutwillik
Marion Hamermesh
Joan Helfand
Keri Helfand
Al Isaacs
The Jewish Historical Society
Ellen Koniver
Kutz Home Catering, Milt Boddie and dietary staff,

Staci Levin
Barbara Levy
Dr. Charles Levy
Danna Levy
Steve Michlin
Stuart Nemser
Julian Preisler
The Rabbinical Association of Delaware
Alan Schoenberg
Clarence Scott
Ruth Siegel
David Sorkin
Jay Stellenberg
Connie Sugarman
Sugarman Family

Nettie Tomases
Norman & Bobbi Tomases
Ralph Tomases
Sadie Toumarkine
Gary Trencher
Art Trickey
Lynn Wachstein
Mary Weinstein
Edie Wishnow

Thank you to all our agencies and all the synagogues for their exhibits.

SUPER SUNDAY!

THANK YOU SUPER SUNDAY VOLUNTEERS! NORTHERN DELAWARE AND DOVER

Artie Allen
Jon Amsterdam
Cas Anolick
Rebecca Bank
Lori Barbanel
Kim Benjamin
Staci Berger
Greg Berman
Rabbi Ellen Bernhardt
Paula Bernhardt
Steve Bernhardt
Steven Biener
Kathy Bloom
Rabbi Stephen Booth
Helena Brodsky
Eric Brown
Governor Thomas Carper
Fred Chalawsky
Leon Chambers
Marlene Cohen
Eileen Conner
Robert Crystal
Emily Davis
Fred DeVries
Rhoda Dombchik
Selma Cohen Dubyn
Steven Ebner
Joan Ellis
John Elzufon
Brian Eng
Michelle Engelmann
Roberta Fishgold
Jon Foreman
Rhonda Foreman
Rick Geisenberger
Helen Gelof
Susan Kimm Gentry
Josh Goldfeder
Alfred Green
Phil Gross

Michael Grossman
Ron Grosz
Alex Grumbacher
Rabbi Peter Grumbacher
Stuart Handler
Adam Hebbel
Joan Helfand
Lawrence Isakoff
Stacy Jacobs
Harriet Kalin
Martin Karel
Debra Kattler



Jon Foreman, Chair of Super Sunday, Judy Wortman, JFD Executive, Lelaine Nemser, Campaign Director and Governor Carper

Peter Kline
Sheryl Kline
Dolores Knopf
Michelle Kramer
Constance Kreshtool
Staci Levin
Irving Levitt
Phyllis Levitt
Amanda Lukoff
Jessica Lukoff



Governor Carper greets Super Sunday callers.

Samantha Lukoff
Alexander Mackler
Scott Mackler
Stefanie Makar
Norman Marcus
David Margules
Leni Markell
Ellen Meyer
Sharon Mittelman



Governor Carper with several student volunteers and Rabbi Dresin.

Karen Moss
Lee Moyer
Jonathan Neipris
Stuart Nemser
Katrina Nichols
Steven Paikin
Donald Parsons
Marc Pevar
Noah Pevar
Robyn Pollack
Lisa Reshaur
Elana Romirowsky
Shay Rosen
Debbie Sadoff
Dennice Schenk
Adam Seidel
Jeffrey Seidel
Linda Sigman
Michael Sigman
Gilbert Sloan
Sonia Sloan
David Sorkin
Joan Spiegelman
Connie Sugarman
Sarah Tartack
Gary Trencher
Edward Tucker
Joan Wachstein
Henry Waxman
Jerry Weinstein
Beth Weintraub
Steven Willens
Henry Wirtschafter
Ari Wishkoff
Barry Wolf
Barbara E. Yalisove
Sam Zuckerkandel
Ella Zukoff
Martin Zukoff

THANK YOU TO ALL SUPER SUNDAY CONTRIBUTORS WHO MAKE THE DAY SUCH A SUPER SUCCESS!

The Jewish Federation of Delaware thanks the following sponsors for their in-kind or financial support of the Super Sunday phonathon on January 15, 1995.



BAYSHORE
THE TRUCK STORE

CECIL VAULT & MEMORIAL CO.



Dennis E. Greenhouse
New Castle County Executive



HUBER NURSERIES
AND GARDEN CENTER



ELLEN S. MEYER
Attorney at Law

Barry Schlecker
NETWORK
PERSONNEL

Schoenberg Memorial Chapels



PAPASTAVROS'
ASSOCIATES

MEDICAL
Imaging



B. Gary Scott Realtors, Dover



THE SPEECH CLINIC



Franciscan Health System
St. Francis Hospital

TAKE-A-BREAK
Food & Refreshment Services



Town & Country Car Salon

TUPP
SIGNS



ART • ENTERTAINMENT • BOOKS

Is That Phish Kosher?

By CHARLENE FEIN

Washington Jewish Week

"Avinu Malkeinu," the Hebrew Yom Kippur prayer that echoes in the ears of thousands at a 10,000 seat venue, is not being sung by a rabbi this time. But Phish — the fast-growing, Vermont-based, "jaw-dropping" rock quartet with two Jewish members — sings the prayer with oomph.

Jonathan Fishman, the drummer of the 11-year-old band, spoke with the Washington Jewish Week about his experiences with Judaism, religion, touring and Elektra Entertainment.

Phish formed in 1983 at the University of Vermont in Burlington, Vt. It performed gigs at The Front and at Nectar's, a bar after which Phish

named its third album, *A Picture of Nectar* (Elektra, 1992).

Playing the New England college circuit, the group eventually performed in other regions (1985-89). By 1990 the band had become well known. The Phish phenomena abounds with bumpers stickers, T-shirts, hats, posters, artwork and, of course, the music itself.

Concerts regularly sell out 5,000 to 17,000 seats. Elektra Records contracts promotions for Phish, along with the management of John Paluska of Dionysian Productions, managers of Phish since November, 1988.

Currently, Phish tours half the year and practices the other half, composing and recording music in the Green Mountain state — Vermont.

Raised as a Reform Jew in Syracuse, NY, Fishman commented: "I like the consistency. Judaism hasn't changed in 5,000 years...and I haven't discovered too many hypocrisies."

Fishman emphasized that "every culture has its own stories, mythologies... All religion is beautiful with different concepts, different stories. I love to read about biblical stories (because) in essence, it's not a literal meaning (that is relevant today); it's the figurative one.... We draw from the value systems, and we study and learn."

Dr. Seuss' children's books relate the same concept, Fishman claimed. "Religion is supposed to unite people...but it's taken too seriously. "Hideous" was Fishman's word in reaction to recent terrorist activities in Israel. He also responded: it's "awful to drop a bomb on anyone," referring to Jewish centers targeted by terrorists in Argentina and London.

The band was described by Elektra Entertainment, a division of Warner Communications, Inc., as displaying "show-stopping instrumental prowess; wry sense of mischief; and most importantly, an ever-growing legion of devout fans for whom Phish aren't just a band, they're a way of life." The free-form jazz, bluegrass, rock, country and improvisational edge is a Phish trademark.

Phish has released five albums to date: *Junta* (self-released/1988; Elektra, 1992); *Lawn Boy* (Absolute a Go Go, 1990; Elektra, 1992); *A Picture of Nectar* (Elektra, 1992); *Rift* (Elektra, 1993); and *Hoist* (Elektra, 1994).

Phish's success story is tour-driven — with three to four-hour improvised sets, the band sold 312,000 concert tickets in 1993. Sellout concerts have included a New Year's eve bash for 14,000 at the Centrum in Worcester, Mass.

Hoist, the band's newest release, is the "best-sounding album" to date, according to Fishman, but problems occurred when there were "too many cooks in the kitchen." This venture was a learning experience, which departed stylistically from former albums.

For example, polished songs for radio airtime, such as "Down with Disease" and the melodic "If I Could" were meant to hook new listeners with broad, mainstream appeal.

Producer Paul Fox of *Hoist* has also "brought success" to 10,000 Maniacs, the Sugarbushes and XTC — according to an Elektra press release — and has "captured Phish's sparkling stage energy and encouraged the band's fresh sense of focus."

Guest contributors to *Hoist* feature the Tower of Power Horn section, Bela Fleck on banjo, the vocals of Alison Krauss, and the Rickey Grundy Gospel Chorus.

Singing in Hebrew "Avinu Malkeinu" and "Demand" (an Israeli folk song written after the 1967 Six-Day War, which is recorded and transcribed on *Hoist*), was a "strictly musical decision. It's not sacrilegious; it's a good piece of music," Fishman claimed.

Mike Gordon, on bass guitar, instructed Trey and Page (the non-Jewish members) concerning Hebrew pronunciation.

Gordon, 29, maintains family connections while traveling the country. Mom Marge Minkin designed the

band's new stage. Great Aunt Bertha Feigenson, who recently celebrated her 100th birthday, highlighted the Phish newsletter (circulation 50,000) this month with a story about a boy's becoming a bar mitzvah.

The other half of the band consists of Trey Anastasio, 30, vocals/guitar and Page McConnell, 31, keyboards/vocals (and golden retriever Marley, 9).

With rave write-ups in *Newsweek* and *People* magazines (the latter trashed the band prior to its mega-success), and *The New York Times*, what lies in the future for Phish? Plans include a live album; touring either Japan, Australia or Europe next summer; and, of course, new groovy tunes.

Gloria Steinem recently wrote inviting Phish to perform acoustically at the "Right to Choose," a pro-choice event. Fishman said the band has not decided whether to attend.

Lyrics from the song "Down with Disease" captures Phish's attitude toward success:

"Waiting for the time when I can finally say
This has all been wonderful,
but now I'm on my way
But when I think it's time to leave it all behind, I try to find a way to, but
there's nothing I can say to make it stop...."
Fishman concluded the interview: "You can mark my word that the best album is yet to come."

BAYSHORE 

LOW PRICES - NO HASSLE!



1995 FORD WINDSTAR

Now As Low As \$17,995

Mon.-Fri. 8:30-8:30
Saturday 8:30-5Silent Sale Sundays
10-5 - No Sales RepsRoute 13 & I-495 (302) 656-3160
New Castle, Delaware

TRY US FIRST ... TRY US LAST ... BUT TRY US!

PHILIP
KOFFKIRKWOOD
KODGENATHAN
LEVIN

4800 Kirkwood Highway, Wilmington, DE (302) 999-0541



ZUBIN MEHTA LEADS THE ISRAEL PHILHARMONIC ORCHESTRA ON SEVEN-CITY TOUR OF THE UNITED STATES FEBRUARY 7-20. Concert Program To Include American Premiere Performances of *Sinfonia Chromatica* By Israeli Composer Ari Ben-Shabetai and concertos by Bruch and Beethoven with Midori and Murray Perahia as Soloists. The Israel Philharmonic Orchestra, conducted by its Music Director, Zubin Mehta, returns to the United States February 7 through 20, 1995 for a seven-city tour that will take them to New York, Washington, D.C., Boston, Greenvale, L.I., and three Florida cities: Clearwater, Ft. Lauderdale, and West Palm Beach.

Hadassah To Sponsor
Second Brunch And Learn

The Wilmington Chapter of Hadassah will sponsor its second Brunch and Learn series on Sunday February 26, 1995 at the home of Diane Franklin 4602 Simon Road from 11:00 A.M. to 1:00 P.M. The program will feature three local high school students who have recently traveled to Israel with the Hadassah Young Judea Program. The students

are Idit Romorowsky, Mark Lipschultz and Marlene Marzouk.

They have agreed to share their impressions and experiences of this trip. The fee for this brunch is \$6.00. Reservations can be made by calling Ann Jaffee at 762-5882 or Eva Weissman at 478-4514 by February 19. Guests are welcome.

ARTS • ENTERTAINMENT • BOOKS

Words & Music:

Music Composed By Victims of Nazis

By STEVE COHEN

Special To The Jewish Voice

It's ironic. Wolfgang Sawallisch, the German conductor of the Philadelphia Orchestra whose appointment was criticized by some, has become a champion of music by Jewish victims of Nazism.

He's introduced more music by victims of Naziism than most other conductors. He's been admired by the players in the Philadelphia Orchestra since he first guest-conducted here in 1966. These men and women and their successors have loved Sawallisch as a musician and a mensch.

"Music brings people together," Sawallisch told me last week. "It can change black years into white. Music has power to open hearts, to bring joy, to bring light into our lives. I live for music. Music can bring beauty and consolation to people who are hurting. I believe that's why Pavel Haas and Viktor Ullman wrote music even in Terezin."

Last week at the Academy of Music and this week in New York, Sawallisch and the Philadelphians performed the world premiere of a symphony that Ullman wrote in Terezin a few weeks before the Nazis executed him. Sawallisch showed me, on his piano, the scores of other Ullman pieces, and said that he wants to introduce more of this music. He learned about Ullman and Haas through Mark Ludwig, a native of Philadelphia who is director of the Terezin Chamber Music Foundation. The foundation supplies educational materials, scores and live performances of music by Jews who were killed in the Holocaust.

Mark Ludwig's brother Michael, a violinist with the Philadelphia Orchestra, was soloist last weekend with the Kennett Symphony Orchestra in an all-Tchaikovsky program. This is a professional community orchestra, based in Kennett Square. It's been led for the past 8 years by Mary Woodmansee Green, orinally from Newark, Delaware. Mrs. Green will be guest conducting with the Israel Philharmonic this summer.

The Wilmington Symphony maestro, Stephen Gunzenhauser, will be leading the New World Symphony in a Miami concert February 26, commemorating the liberation from Naziism. He's conducting Bruch's "Kol Nidrei," Prokofiev's "Overture on Hebrew Themes," Darius Milhaud's "Creation of the World" and the American premiere of a piece by an Israeli composer named Yusupov.

Nancy LaMott, appearing at the Hotel Atop the Bellevue this week and next, won an award as Top Cabaret Performer in New York City in 1994. I'd nominate her, also, for a Courageous Performer award.

She's 43 years old (though she appears younger) and has been singing in saloons for almost twenty years, but her breakthrough came only in the past two seasons. Those who've known her say that LaMott's performances used to be erratic. One night she sang intensely, with beautiful voice; the next night she'd sound and appear tired and weak.

That was because she has Crohn's Disease, an inflammatory ailment

that's centered in the intestinal area. It caused almost-constant pain, and periods of great fatigue. Doctors prescribed pain killers which sometimes made her groggy, and steroids, which adversely affected her vocal cords.

In 1993 LaMott had her colon removed, thus erasing the symptoms and ending her dependency on medications. She cheerfully reports that her ileostomy changed her life entirely for the better. She also credits two men for turning her career around: David Friedman and Scott Barnes. "They believed in me, and they put their money and their energy where their mouths are."

She refers to the fact that David produced her first recordings, putting up most of the money himself, and Scott directed her act and then became her manager.

The recordings I've heard are "Beautiful Baby" and "My Foolish Heart," both on the Midder Music label. Highlights include "Help Is On the Way," an anthem written by Friedman, and two songs by their friend David Zippel. Both CD's, but especially the most recent "My Foolish Heart," contain unadorned but unusual interpretations of standards such as "It Might As Well Be Spring."

In person, backed by a tasteful young pianist with an unlikely name, Christopher Marlowe, LaMott makes even more of an impact. Her gimmick? No gimmick. Straightforward conversation and intimate, passionate versions of old familiar songs.

Nancy LaMott's voice is one of the best on the nightclub scene and she expresses the lyrics and the subtext without overwrought body language or vocal distortion.

As Jonathan Schwartz, the land's premier disc-jockey of American popular standards, wrote of one of

her CD's, "This is a little square box of feelings, conveyed unsentimentally."

With her future looking hot, I asked LaMott what she hopes to be doing five years from now. "To be working, to be healthy, to be happy," she says; "I've never cared about whether or not I'm famous."

With so much activity, we've run out of space. Would you please be patient and wait until my next column for our picks of the top recordings of the year?



Albert Einstein Academy - First grade parents prepare their "Siddur Secret." They came to Einstein one evening to decorate covers for the prayerbooks that were to be presented to the children on January 28th at the Kabbah Sidduring program the Hudalah service at which the first graders will receive their prayerbooks. Left to right: Jill Lock, Michelle Wasserman, Jeff Wasserman, Shoshana Hershkowitz (teacher), Fran Sawicki.

100 Years After Dreyfus

Translated by DOV SEIDEL

from an article in LAMPASHA Magazine Special To The Jewish Voice

One hundred years ago, exactly, on the fifth of January, 1895, on the grounds of the military school in Paris, stood a Jewish officer, in front of a multitude of soldiers and French citizens. A second officer tore from his uniform the signs of his rank, and also broke his sword, while the crowd shouted "Death to the Jews!" The Jewish soldier was sentenced to banishment from France and to life imprisonment on Devil's Island, which is near French Guyana.

The name of the officer was Alfred Dreyfus, and the 'Dreyfus Affair' was one of the most serious incidents of anti-Semitism that occurred in Europe before the Shoah.

The affair began when secret documents disappeared from the General Staff of the French Army, and the suspicion fell on Dreyfus, who was the only Jew on the Staff.

There was no evidence against him; French officers 'found' and forged evidence. An army court found Dreyfus guilty of treason (for Germany) and sentenced him to the harshest punishment the law permit-

ted — inprisonment abroad for his whole life.

Several years later, the true spy was revealed. Dreyfus was brought to a second trial, and, despite all the evidence, he was not found innocent. Only in 1906, in a third trial, was Dreyfus pronounced innocent; he returned to his work at the General Staff.

No less in significance than the fate of Dreyfus were the manifestations of anti-Semitism which broke out following the trial. Anti-Semitic articles and caricatures filled the newspapers. The famous writer, Emil

Zola, was among the few who fought for Dreyfus.

One hundred years ago, exactly, on the fifth of January, 1895, stood, in Paris, among the reporters covering the 'parade of degradation' of Dreyfus, a 35-year old Jewish reporter from Vienna, Theodore Hertzl. The manifestations of anti-Semitism that Hertzl saw that day changed his life (and our lives) — he was convinced that the Jews must have a state of their own.

(Dov Seidel is the Immediate Past Chair of The Editorial Committee of The Jewish Voice)



(Wilmington, DE) -- Daniel Pirralo, General Manager, Sheraton Suites Wilmington presents checks to (from left) Catherine Wolff, Interim Director Delaware Symphony and David Edelman, Managing Director Delaware Theatre Company.

The Kutz Home Unveils New Logo

The Milton and Hattie Kutz Home, Inc., a skilled nursing facility and rehabilitation center for aged people at 704 River Road, Wilmington, recently introduced a new logo and theme designed to communicate its new look.

"During the past year we embarked on an expansion program that began with a few cosmetic renovations throughout our facility," Eileen Conner, the Kutz Home Board President, explained. "Plans are now underway to increase the number of beds from 82 to 90 and to totally renovate the Home. We are very proud of the improvements being made and wanted a new image in our communications."

To reflect this expansion program and position itself for the future, the Kutz Home had Reese, Tomases & Ellick, Inc., a Wilmington marketing communications agency, create a new logo and promotional theme: "Caring for our Jewish and non-Jewish aged with the reverence they deserve."

The new logo design, a large letter "K" forming a Star of David in the bottom portion of the K, has "THE KUTZ HOME" beneath it. "The logo symbolizes the Home's connection to its Jewish heritage," according to Eugene Ellick, RT&E



THE KUTZ HOME

President. "However, its subtle presentation shows that the Kutz Home not only is home for Jewish residents, it is open to the aged of all religions."

Ms. Conner said both the new logo and theme were recently introduced on a brochure and folder making the public aware that the Kutz Home provides a comfortable home and professional care for both long-term and short-term residents. The Home provides a wide range of activities, as well as on-site physical, occupational and speech therapy programs.

A licensed non-profit skilled nursing facility, the Kutz Home is a constituent agency of the Jewish Federation of Delaware (JFD) and a member of the United Way of Delaware.



THE KUTZ HOME

Delaware's only Jewish nursing facility dedicated to caring for our elders with the reverence they deserve.

- Medicare and Medicaid certified
- 24-hour skilled nursing care
- Physical rehabilitation services
- On-site beauty parlor
- Kosher meals and snacks
- Sabbath and holiday services
- Activities programs

For more information about the Kutz Home, please call Shella Mensch at (302) 764-7000.

The Milton & Hattie Kutz Home, Inc. 704 River Road - Wilmington, DE 19809

SYNAGOGUE LIFE

Young Speaks February 26 To Temple Beth El's Men's Club

The February 26 Temple Beth El Men's Club Breakfast meeting will feature Toni Young presenting "Reflections on the Peace Process." Mrs. Young, President of The Jewish Federation of Delaware (JFD), has had the opportunity to hear presentations on the peace process by such principal players as the Israeli officials Prime Minister Rabin, Foreign Minister Peres and Ambassador Rabinowich; the initiator of the Oslo talks, Mr. Yair Hirshfeld; and a leading Palestinian, Dr. Mustafa Barghouti. Most recently she visited Israel and Jordan in November. A statement issued on behalf of the Men's Club announced "We are very pleased that she will share these experiences with us." Toni Young has

been very active in the Delaware community through the Jewish Federation, the Jewish Historical Society of Delaware, the Grand Opera House and the Delaware Humanities Forum.

The statement on behalf of the Men's Club continued "Please join us on the 26th for an ideal opportunity to get closer to the issues and the personalities of the Israeli-Palestinian peace process." A bagel and lox breakfast buffet begins at 9:30 AM. The main presentation begins at 10:30 AM and the program concludes at 11:30 AM. The breakfast buffet is \$5.00 per person, and the whole community is welcome to join. For additional information, call the Temple Beth El office at 366-8330.

Beth Emeth Invites You To A Wedding Feb. 26

The Outreach Committee of Congregation Beth Emeth and the Interfaith Outreach Committee of Jewish Family Service request the honor of your presence at A Jewish Wedding. The representative bride and groom will be: Jean and Jack Blumenfeld. The ceremony will be Sunday, February 26th, 1995, at 3 O'Clock (26th Adar, 5755) at Beth Emeth Chapel (300 East Lea Boulevard). The reception will follow the ceremony. R.S.V.P to (302)764-4277.

Rabbi Laurence P. Malinger will conduct the ceremony and explain details of the proceedings. The

meaning of the pronouncements, the contractual phases of the ceremony, and terms such as "Ketubah", "Bedeken", and "Kinyan" will be discussed.

This educational and informational program is designed to help those about to be married, their parents, those about to be intermarried and their parents, and those married couples with vague memories who want to recapture what they said many years earlier. The program is also intended for anyone in the community who wishes better to understand the Jewish commitment and value of marriage.

Temple Beth El Sisterhood Schedule Features "White Elephant" Auction

"It is 1995 and Temple Beth El Sisterhood is off and running again," according to members. In December, Arlene Cohen, Assistant Vice President at Merrill Lynch, talked on Women and Investments. "Arlene's talk was really enlightening," one member said. "She was able to clear up a lot of confusion with regard to investing and financial planning." Then January brought older and younger members of Sisterhood together to learn Mahjongg. "We had a large crowd and a great time was had by all." "But look out," says Helen Tanny, President of Sisterhood. "The next several months plan to be just as busy."

A cookie exchange is on the agenda for the next Sisterhood meeting, and a cookie cookbook will be compiled from all the recipes. Self defense and country line dancing will bring our general meetings up to Spring. In addition to their general meetings, Sisterhood also has two fundraisers planned.

Temple Beth El Sisterhood is sponsoring their White Elephant auction and all are welcome at 7:30 p.m., on Feb. 25 for the event which features a wedding theme. A bride and groom will be auctioning off goods and services that have been donated by the members of Temple Beth El

and neighborhood businesses. "Playhouse tickets, trips, and restaurant gift certificates are just a few of the items that will be featured," said Cindy Denmark, chairperson. Cindy also wants everyone to know that a dessert bar is included with the \$5.00 per person cover. On April 30 Sisterhood will close their year with a fashion show. The program will start at 3:00 p.m. and will feature clothes and accessories by Icings, a new boutique located in the Christiana Mall. The fashion show will follow a High Tea. Temple Beth El is located at 301 Possum Park Road, in Newark. All the above events are open to the public. For more information please call 366-8330.

Do You Study Talmud?

The Aleph Society is making a list of the Talmud classes (whether two people are studying or a whole class) in the U.S. If you know of any in Delaware, could you let me know? Thanks. Dov Seidel 368-9207.

Beth Shalom Community Mitzvah Day News

Wilmington's Beth Shalom Congregation will hold its Annual Mitzvah Day on Sunday, March 5, 1995. This event which was inaugurated last year is designed to provide a helping hand to less fortunate congregational members and the neighbors of Beth Shalom. Last year over 100 congregational members, children, teen and adult members participated in a number of community service projects. State, County and City Of Wilmington Officials proclaimed this day as an official day as a part the community calendar in 1994.

This years projects include visits to homebound members, entertainment at the Kutz Home, painting and

handyman projects at a United Way Facility, and cataloging books and enhancing the Synagogue and Albert Einstein Libraries. Under the direction of Cantor Swerling a group will complete a 1994 project whereby they marked each of the Synagogue torahs to ensure future identification. Another group will spent the day restoring and polishing the torah crowns, shields, and finials. Beth Shalom's religious school will collect baby items (diapers, infant clothing, food, skin care products) for D.A.P.I. (De. Adolescent Program Inc.). Members have been asked to donate cleaning items for food stamp recipients inasmuch as these individuals cannot utilize food stamps to purchase these necessities. Additionally

non-perishable "one meal" food items (hearty soups, stews, ravioli, etc.) will be collected for distribution to a Wilmington based United Way supported facility.

Rhoda Dombchik Beth Shalom Vice President and Marilyn Cooper Mitzvah Day Chair are coordinating this years program. "Last year's Mitzvah Day activities provided an opportunity for many of our members to provide assistance to our needy neighbors. This community service project gave a great deal of satisfaction to those who participated and we look forward to expanding the program for this year" said Rhoda.

Community members are invited to participate with Beth Shalom by dropping off baby items for D.A.P.I., or cleaning items and food at the synagogue office 18th and Baynard, Monday through Thursday, 9:00 a.m. to 5:00 p.m., or Fridays 9:00 a.m. to 12:00 p.m. until March 2, 1995.

Candle Lighting

FEBRUARY

10TH — 5:13 PM

17TH — 5:21 PM

24TH — 5:29 PM

MARCH

3RD — 5:37 PM

Poverty And Welfare Reform Will Be Discussed At AKSE

Professor Saul Hoffman, Department of Economics, University of Delaware, is the featured speaker at the A.K.S.E. Men's Club Breakfast at Adas Kodesch Shel Emeth Congregation on Sunday, February 19, 1995. Breakfast is at 9:30 a.m. The program follows from 10:00 a.m. to 11:00 a.m. Professor Hoffman's topic is "Poverty and Welfare Reform." Professor Hoffman is a world-renown expert on this subject. He is the author of the 1995 World Book Annual Supplement on Welfare Reform. He has done extensive research in this area. Professor Hoffman resides with his wife, Susan Parker, a Wilmington attorney, and their two children ages 7 and 10 in Bellevue Manor, north of Wilmington, Delaware.

The Men's Club welcomes all to attend this stimulating program. The cost is \$2.00 for members and \$5.00 for non-members. For more information, contact A.K.S.E. Congregation, 762-2705.

Beth Emeth Sisterhood Examines Prayer In School With ACLU Exec.

Beth Emeth Sisterhood will present its Critical Issues Program on Tuesday, February 21st at 10 a.m. The program will feature coffee and conversation with Judy Mellen, Executive Director, ACLU. The topic

will be "Prayer in Public Schools?" Please plan to join us for this stimulating dialogue: all are welcome to attend. For more information, please contact Michelle Engelmann at (610) 359-1969.

Learn About Havdallah at AKSE Service

On Saturday, March 4th Adas Kodesch Adult Education is sponsoring a Havdallah service that will add to participants' knowledge about this warm and mystical ending to Shabbat. With explanations and stories about Havdallah, Rabbi Dresin and Cantor Leeman will provide a greater understanding of the meaning and practice of this service. Family

and children are encouraged to attend this enriching experience.

Following Mincha which begins at 5:15, from 5:30 to 7:30 participants will enjoy a light Seudah Shlishit and Zemirot, concluding with Maariv and Havdallah. Please call the Adas Kodesch office at 762-2705 by Tuesday, February 28th to sign up.



BILLINGS, Mont. -- Richard Larsen, mayor of Billings -- Montana's largest city -- holds 3-year-old Rachel Schnitzer as he receives a tree presented to the people of Billings "in recognition of their decency and caring" by the movement for Reform Judaism. At right is Rabbi Daniel B. Syme, senior vice president of the Union of American Hebrew Congregations, central body of Reform Judaism representing 860 Reform Jewish synagogues in the United States and Canada. Last year, the residents of Billings joined in a collective city-wide campaign to resist racist and anti-Semitic bigotry and acts of violence by neo-Nazis and other hate groups that had invaded the area. Little Rachel's family was among the victims of anti-Semitic attacks against the tiny Jewish community. During Hanukkah 1993, thousands of non-Jewish families displayed menorahs or pictures of Jewish families targeted by the bigots. The sapling will be planted at a public site in Billings together with a plaque marking the community's effort to combat prejudice and violence. Photo by Roberts Studio

Proofreader volunteer sought to work in Dover a few hours, twice a month. No experience needed. Call Dan at 478-6200.

CALENDAR OF EVENTS

Entries for the Calendar of Events are due on the Thursday deadline, published in *The Jewish Voice*. Copy should be typed and double spaced. Entries are preferred on 3 1/2" floppy disk or via E-mail. Please include day, date, time, place, brief description, and contact person.

Sunday 12

Beth Emeth Brotherhood Breakfast Programs, 9 a.m. at Beth Emeth. Speaker: Robert Walker, Manager of Wilmington Suburban Water Company. Topic: "Meeting Water Quality Regulations in the 90's". The cost for breakfast is \$3.00 per person. Contact: Phil Fishgold, 798-5185.

Monday 13

The Israel Consulate and Rabbinical Association of Delaware in cooperation with Congregation Adas Kodesh Shel Emeth will sponsor a talk by Rabbi Michael Melchior, Chief Rabbi of Oslo, Norway, on the topic, "The Future of the Israel-Arab Peace Process, 7:30 p.m. at AKSE.

Wednesday 15

An Investment Seminar, entitled "Women and Their Money," will be led by Ilene Slatko. Lunch starts at 11:30 a.m. and the seminar follows. RSVP to Barbara Katz at 652-5823.

Saturday 18

Y.J.A.D. (Young Jewish Adults of Delaware) House Party at the Gross Mansion. Come help us inaugurate Phil's new house. Hors d'oeuvres and light refreshments will be served. The party will begin at 8:30 p.m. Call Phil Gross at (302) 652-6688 [h] for reservations.

Sunday 19

Temple Beth El Men's Club Breakfast Meeting will feature Toni Young, President of the Jewish Federation of Delaware, presenting "Reflections on the Peace Process."

Breakfast begins at 9:30 AM. The presentation is at 10:30 AM concluding at 11:30 AM. Cost is \$5.00. All are welcome. Call Temple Beth El at 366-8330.

Professor Saul Hoffman will speak at the A.K.S.E. Men's Club Breakfast. Hoffman is a Professor of Economics of U of D. His areas of specialty include the Economics of Welfare and Poverty as well as the Economic Demography/Economics of the Family. Brunch is at 9:30 a.m. at A.K.S.E. and all are welcome. Call 762-2705.

Saturday 25

AKSE Sisterhood Annual Square Dance & Dinner.

Sunday 26

Y.J.A.D. (Young Jewish Adults of Delaware) Sunday Brunch. We will meet at Stanley's on Foulk Road at 11:30 a.m. to sample their extensive brunch menu. Please call Michele at (302) 892-4255 [w] for further info.

The Temple Beth El Men's Club Breakfast meeting will feature Toni Young presenting "Reflections on the Peace Process." A bagel and lox breakfast buffet begins at 9:30 AM. The main presentation begins at 10:30 AM and the program concludes at 11:30 AM. The breakfast buffet is \$5.00 per person, and the whole community is welcome to join. For additional information, call the Temple Beth El office at 366-8330.

MARCH

Sunday 12

AKSE Purim Carnival.

Sunday 26

Professor John Stapleford will speak at the A.K.S.E. Men's Club Breakfast. Stapleford is the Director of the bureau of Economic Research at U of D. Brunch is at 9:30 a.m. at A.K.S.E. and all are welcome. Call 762-2705.

Ongoing

"Coming To Delaware: The Amish, Jewish and Italian Farm Communities" will be on display through June 30, 1995. The exhibit will feature the stories of three ethnic groups which settled on farms in Delaware during the first quarter of the 20th century. The goal of the exhibit will be to foster an understanding of multicultural differences and similarities in farming and farm life in Delaware. The history of why the Amish, Italians and Jews migrated to Kent County, Delaware, how they approached farming, their success as farmers, and their lifestyles will be explored in the exhibit.

Protection From Abuse Seminars. The Project For Domestic Violence Reform, Inc. will sponsor monthly seminars on the use, filing and hearing of Protection From Abuse Petitions by victims of domestic violence. The seminars will be conducted by an attorney trained and experienced in family law. It will be the fourth Wednesday of every month from 7:00-9:00 p.m. at the Delaware Technical and Community College, Wilmington Campus, Fourth and Orange St., and is open to the public without charge.

The new Protection From Abuse Act makes it possible for victims of domestic violence to get protection from their abusers without bringing a criminal action. Victims can request no contact orders; removal of deadly weapons; and custody of children and support for a limited time. The seminars will provide information and

answer questions about how to obtain and use these petitions.

Handbook Available On Internship Opportunities In Israel. Have you ever considered working in Israel as an intern or volunteer? A book, entitled *Volunteer and Internship Possibilities In Israel*, can make that dream a reality. Published by the Joint Authority for Jewish-Zionist Education, this handbook is perfect for students, young professionals and potential *olim* interested in exploring employment opportunities in Israel.

To order *Volunteer and Internship Possibilities In Israel* send \$10 for each book to: USD/AZYF, 110 E. 59th Street, 3rd Floor, New York,

NY 10022 or call: (212) 339-6941 or 1 (800) 27-ISRAEL.

"Strong Houses: Multimedia Works by Carol Hamoy"—Hamoy creates sculptural enclosures exploring Jewish female identity, tradition and spirituality; and **"We Make Memories"** an interactive video installation by Abbe Don in which she interprets four generations of her family's history. While each show is discrete—one uses found objects to create textured sculptures, the other relies on computer technology—both artists utilize intergenerational associations and the power of memory to explore their Jewish identities at the AMJH.

joel h. shoulson

the only second generation fully approved full-time, professional



(mohel)

serving your community since 1951

1-800-700-JOEL (5635)

610-896-7750

please call for videotape and information



LIVE JEWISH

REMEMBER OUR PAST...INSURE OUR FUTURE

1995 JEWISH FEDERATION OF DELAWARE 60TH ANNIVERSARY CAMPAIGN

NACHES

Schenk-Rosentrauch

Stuart and Sandra Schenk of Chadds Ford, Pennsylvania, announce the marriage of their son, Michael Bruce Schenk, to Dennice Ellen Rosenstrauch, daughter of Gary and Sherry Rosenstrauch of Harrisburg, Pennsylvania. Michael and Dennice were married November 6,



1994, at Temple Ohev Sholom in Harrisburg. A reception followed at the Marriott Hotel.

Karen Philipps, friend of the bride, was the maid of honor. Meryl Levin and Karen Walden, sisters of the groom, were bridesmaids.

Harry Sachs, cousin of the groom, was the best man. Erik Rosenstrauch and Joel Rosenstrauch, brothers of the bride, were groomsmen. Alan Rosenstrauch, also brother of the bride, was ring bearer.

Michael graduated with honors with a B.S. in Mathematics from Carnegie Mellon University. He received an M.A. in Mathematics from the University of Wisconsin-Madison. He is currently an Actuarial Assistant with Balis & Co., Inc. in Philadelphia.

Dennice graduated with distinction with a B.A. in English from Penn State University. She received an M.A.T. in Education from Boston University. She is currently an eighth grade teacher of Reading and Language Arts at Nehaunsey Middle School in Gibbstown, New Jersey.

Following their honeymoon in

Cancun, Mexico, the couple now resides in Chadds Ford.

Glick Grandchild

Estelle and Marty Glick wish to announce the birth of their first grandchild, Zachary Robert Newman. He was born on January 21, 1995 and is the son of Deborah and Richard Newman of Jessup, Maryland.

There's no charge to print your Naches announcement and photograph as space allows in *The Jewish Voice*. Send your typewritten Naches announcements and photographs to:

The Jewish Voice
Naches Section
101 Garden of Eden Road
Wilmington, DE 19803-1579

Send a stamped self-addressed envelope if you would like your photograph returned. Please allow three to six weeks for return.



Harry David Zutz Insurance, Inc.

Committed to Creative Insurance and Risk Management Solutions for More Than 50 Years

Complete insurance coverage and underwriting facilities for:
• Business and Personal Insurance
• Marine • Surety bonds

Specialists in unusual risks

PLI Professional Liability Insurance, Inc.
an affiliate of Harry David Zutz Insurance, Inc.

Comprehensive coverage for professionals of all disciplines

300 Delaware Avenue
P.O. Box 2287
Wilmington, DE 19899
(302) 658-8000

Branch Office:
#1 Seething Lane
London, EC3N 4NH
England
Phone: 071-962-2003

ברוך אתה ה' אלקינו מלך העולם אשר קדשנו במצותיו וצונו להכניסו בבריתו של אברהם אבינו

When you say this prayer, immediately following the circumcision of your son, know that you have chosen an experienced, certified mohel who has assisted you in completing the *mitzvah* of *Brit Milah* with sensitivity and a personal touch in keeping with Jewish law and tradition.

Cantor Mark E. Kushner, Certified Mohel
Bikkur Holim Hospital, Jerusalem
Brit Milah Board, Philadelphia

1-800-559-BRIS

AJ Congress Unveils "AJ Congress Online," to Internet and E-Mail Users Worldwide

NEW YORK— Staking out an Jewish presence in cyberspace, the American Jewish Congress unveiled AJCongress Online, an electronic information and communication initiative. "The creation of AJCongress Online will make our unique information resources immediately available to the 30 million Internet users worldwide, as well as those subscribing to other information services such as America Online and CompuServe," said David V. Kahn, President of AJCongress. Kahn explained that AJCongress Online consists of an information archive residing on the Internet (known as a "gopher"), electronic mail (e-mail) delivery for AJCongress offices, and electronic distribution of AJCongress press releases, legislative Action Alerts and major reports.

Mr. Kahn continued. "I am particularly excited about AJCongress Online's ability to reach unaffiliated Jews and especially younger people who are more accustomed to receiving information through e-mail. AJCongress Online's easy availability, even in areas of the country lacking large Jewish communities, will give a wide range of people the opportunity to 'plug-in' to the organized Jewish community."

The AJCongress gopher includes

information from Capitol Hill, AJCongress press releases, assorted reports, regional office listings, and instructions for using the various aspects of AJCongress Online. AJCongress Washington Representative Mark J. Pelavin, who oversees AJCongress Online, explained that imminent additions to the AJCongress gopher include news from AJCongress' Israel office; Supreme Court documents and information regarding AJCongress litigation efforts; details of the AJCongress Worldwide Travel Program; and various electronic forums, in which participants will be able to discuss current political issues and other matters of special interest to the American Jewish community.

"The AJCongress gopher will continue to steadily expand, but it already offers instant access — at no cost to the user — to a wide range of information, including substantive political and legislative analyses. It clearly marks the largest Internet presence of its kind," explained Mr. Pelavin. "This project will go a long way towards addressing the demand, expressed by politically active individuals across America, for immediate updates on breaking Capitol Hill news. Our electronic legislative Action Alerts will combine quick analy-

sis with instructions to contact key members of Congress, enabling grassroots activists nationwide to quickly and easily join us in our policy efforts," he noted.

"Integrated electronic efforts such as AJCongress Online reflect the future of organizational communications," said AJCongress Executive Director Phil Baum. "Individuals and organizations without electronic communications and information access will increasingly be left out, so we felt that it was crucial for AJCongress to take a leadership role within the Jewish community in joining the electronic information revolution," Mr. Baum continued. "AJCongress Online will also reduce AJCongress' expenditures on faxing and long-distance calls, and by making such communication readily available to our far-flung offices, we look forward to closer communication and improved coordination among AJCongress offices around the country and in Israel."

To electronically receive more information about AJCongress Online, send e-mail to "listproc@ajcongress.org", containing only the words "get ajcarchive info". Please direct e-mail questions or comments to "washrep@ajcongress.org".

Speaker Gingrich Denies Conflict As Wife Promotes Investment In Israel

By LARRY YUDELSON

NEW YORK (JTA) — Reports surfaced this week that Marianne Gingrich, the wife of the Speaker of the House, is an employee of the Israel Export Development Corp. The corporation, is dedicated to setting up a free-trade zone in Israel. Backed by wealthy American Jews, the group hopes this summer to receive a formal contract for the zone from the Israeli government. American and other foreign companies doing business in the zone would be exempt

from most Israeli taxes and regulations. As the firm's vice president for business development, Marianne Gingrich is helping to coordinate marketing efforts. She earns \$2,500 monthly, plus commissions, according to news reports.

David Yerushalmi, the corporation's chairman and chief executive officer said, "We hired her because of her skills and her education and her enthusiasm. One of the things we did not do is advertise that

Marianne Gingrich was working for us," he added.

But Chuck Lewis, executive director of the Center for Public Integrity, an ethics watchdog group in Washington, said, "One of the reasons this is interesting is that she has no background in trade or the Middle East," said Lewis. "The company claims she is a marketing representative and doesn't need a trade background. People can draw their own conclusions."

Yerushalmi denied that Newt Gingrich's position had any influence on the decision to employ her. "We don't need anything from the Israeli government at this point," Yerushalmi said. "We don't need anything from the Washington government."

Douglas Bloomfield, a former lobbyist for the American Israel Public Affairs committee, said Gingrich's position is good for Israel "as long as everything's kosher." "It suggests to us she, like her husband, has a high comfort-level with Israel, and that's positive," he said.

Indyk also cautioned Congress against moving the U.S. Embassy — which he would head — from Tel Aviv to Jerusalem. While both the Israeli and U.S. administrations are opposed to the move, there is growing support for it on Capitol Hill.

"That would put us out of the business of a facilitator" of peace negotiations between Israel and its Arab neighbors, Indyk said.

"We must do nothing to undermine the negotiations," Indyk added, reminding the senators that Israel and the Palestine Liberation Organization

Acquittal of Neo-Nazis Raises Ire Of Jewish, German Leaders

By Gil Sedan

BONN, (JTA) — Jewish and governmental leaders have criticized the decision of a German court to dismiss a case against two neo-Nazis who used a telephone service to spread Holocaust-denial propaganda. A court in Hamburg dismissed the case over the weekend against the two neo-Nazis, who used an outgoing telephone message to spread the word that the murder of millions of Jews during World War II was merely "an Auschwitz myth." The court ruled that the use of that term did not amount to Holocaust-denial, a punishable offense in Germany. Ignatz Bubis, chairman of the Central Council of Jews in Germany, called the decision "destructive." The term "Auschwitz myth" creates the impression that the wartime horrors perpetrated at Auschwitz are a leg-

end, he said. Parliamentarian Cornelia Sonntag of the opposition Social Democratic Party said the court's ruling "was unacceptable and must be corrected." Michael Friedman, chairman of the Frankfurt Jewish community, said the decision was an indication that German judges were still unable to cope with "mental arsonists who were using words as weapons." Hamburg's Justice Minister Klaus Hardrath expressed confidence that the decision would come under judicial review. The judge who handed down the decision declined to comment. After the ruling, the two neo-Nazis prepared a new telephone message in which they said the Hamburg court had proven that there were still "honest judges with civil courage" in Germany. The prosecution has announced that it will appeal the court's decision.

Netanyahu Offers His Own Plan For Self-Rule In The West Bank

By NAOMI SEGAL

JERUSALEM, (JTA) — Likud opposition leader Benjamin Netanyahu this week offered his own proposal for extending Palestinian self-rule to the West Bank.

Netanyahu, in a weekend interview with Israel Radio, said he would favor giving Palestinian residents of the West Bank self-rule in all respects except in the areas of security and foreign affairs.

His proposal also called for the formation of a political axis involving Likud, the Palestinians and Jordan.

Netanyahu noted that his plan, which he said was based on the 1978 Camp David Accords, was the only way to prevent the establishment of a Palestinian state.

He claimed to have discussed the proposal with Palestinian officials who he said had reached the conclusion that Palestine Liberation Organization Chairman Yasser Arafat could not be relied upon to lead the Palestinian cause.

He refused to name the officials, but said, "They may speak the PLO-line now, but the minute the PLO falls from power, you will hear a different tune."

"Everyone understands that the current situation cannot continue."

Netanyahu also said that in his view, the Palestinians would accept

much less than what the Rabin government is currently offering them.

"The idea is to give self-rule to the Arab residents, while keeping security under Israeli control," Netanyahu said. His proposal, he added, "can ensure security and allow for gradual advances toward a new reality in the Middle East."

His plan includes a proposal for sealing off the Gaza Strip with a wire fence and creating a protective minefield to prevent Palestinian laborers from working in Israel.

Netanyahu said he would permit the entry of tens of thousands of foreign workers into Israel to make up for the loss in the labor force.

The Likud leader's proposal drew a strong reaction from Prime Minister Yitzhak Rabin, who said it was not a plan, but "a joke."

Rabin doubted that any Palestinian leaders would support the proposal.

He added that the Likud leader is proposing keeping the Israel Defense Force in "the cities and towns in Judea and Samaria. If the civil administration he is proposing to the Palestinians is under Israeli control, then that is the current situation."

"He should just say he wants to keep things as they are now, with control in the hands of a different people — and that is the source of terrorism," Rabin said.

Police Minister Moshe Shahal called Netanyahu's idea the "most superficial Middle East proposal" he had heard. He said that if it were possible to have a no-confidence vote in the opposition, this plan would make him do it.

Netanyahu was also criticized by Likud rival and former Foreign Minister David Levy, who said that Netanyahu had not consulted with his colleagues about the idea.

In response, Netanyahu, who is on a speaking tour in the United States, said his proposal was based on the tenets of the Likud platform.

(Continued on page 25)

Clinton's Nominee For Israel Cautions Senators On Embassy, Troops

By MATTHEW DORF

WASHINGTON, (JTA) — President Clinton's nominee for ambassador to Israel has cautioned senators not to move the U.S. Embassy to Jerusalem and to avoid action that would prevent sending U.S. troops to the Golan Heights.

Testifying at his confirmation hearings before the Senate Foreign Relations Committee on Thursday, Martin Indyk used the forum to press for continued support for the peace process.

Indyk, who would be the first Jewish ambassador to Israel, fielded a wide range of questions from Sens. Hank Brown (R-Colo.), Dianne Feinstein (D-Calif.) and Claiborne Pell (D-R.I.) during one and a half hours of testimony.

Sen. Jesse Helms (R-N.C.), chairman of the committee, was not present at the hearing, but many pro-Israel activists were.

Brown, who chaired the hearing in Helms' absence, said the committee would vote on the nomination at its next business session, as early as next week.

If the committee, as is widely expected, votes to confirm Indyk, the entire Senate will take up the nomination as a formality.

Indyk would replace Ambassador Edward Djerejian, who resigned his post last summer.

The Australian-born Indyk currently serves as a special assistant to Clinton for the Middle East. A former consultant for the American Israel Public Affairs Committee, Indyk was the founding executive director of the influential Washington Institute for Near East Policy, a pro-Israel think tank.

"We do not seek a fraudulent peace," Indyk said, appearing relaxed during the hearings. "It must be secure, lasting, comprehensive and warm."

U of D Faculty Adopts Free Expression Policy

The Faculty Senate of U of D adopted a "Freedom of Expression" policy at its Dec. 5 meeting which is designed to protect invited speakers, faculty members and students against censorship by the university. This action comes at a time when some

are concerned anti-Semitic speech, is fraying civility and trampling historic fact.

The Faculty Senate ad hoc committee, which drew up the resolution, said the university welcomes the free and open expression of ideas in its

public events.

"Although some individuals or groups ... may deem certain speakers, performances or exhibitions to be offensive, that in itself is not reason for prohibiting, censoring or otherwise restricting them," the ad hoc

committee's original report to the Faculty Senate stated.

According to *The Review*, U of D's student newspaper, formulation of the ad hoc committee to address freedom of expression was prompted by the 1992-1993 lecture given by speaker Leonard Jeffries. Jeffries, who earlier this year referred to Jews as "skunks" made anti-Semitic remarks and was protested by some members of the Jewish community.

Critics contend that free expression without limits poisons the public sphere and devalues the role of a factual basis for the debate of ideas.

The final version of the resolution is modeled after the Freedom of Expression section in the 1993-1994 Official Student Handbook, but the new policy contains some changes such as providing for freedom of artistic expression as well as freedom of speech.

The Faculty Senate ad hoc committee recommended adopting the resolution as official university policy.

The adopted resolution reads as follows:

Members of the university community are free to examine and to discuss all questions of interest to them and to express opinions publicly and privately. They are free to support causes by ordinary means including any means of

peaceful assembly or advocacy which do not infringe upon the rights or freedoms of others.

Member of the university community are allowed to invite, to hear, and to see speakers creative performers and artistic presentations of their own choosing. Guest appearances must not interfere with the university's regular instructional, research, and service programs. Except for ceremonial occasions, invited speakers and art presenters should be prepared for a reasonable public discussion of their expressed views.

Invited speakers and art presenters are accorded the full courtesy and protection appropriate to a university community. Individuals or groups who engage in actions designed to obstruct or in any way to prevent the speaker from speaking and the art presenter from presenting or displaying any form of artistic expression are subject to discipline and to financial responsibility in the event of damage to property or person.

The institutional control of campus facilities is not to be used as a device of censorship. Sponsorship of guest speakers and art presenters does not imply approval or endorsement of the views expressed, either by the sponsoring unit or the university.

The quotes, dates and text above has been adapted from an article by Jimmy P. Miller which appeared in *The Review*.

Nominee

(Continued from page 24)

Indyk also sounded a stern warning against debating the merits of stationing U.S. troops on the Golan Heights as part of a presumed Israel-Syria peace accord.

The issue has become a much-debated one in the wake of statements by Clinton and Rabin that they would seek U.S. monitoring forces in the event of an agreement.

"It is important that Congress does not do anything to tie the administration's hands," Indyk said.

Indyk reiterated the president's promise to consult Congress before the issue becomes a "fait accompli."

Indyk told the senators that he understands their concerns that they might be presented with a peace treaty and put in the position that a vote against troops on the Golan would be a vote against peace in the Middle East.

"Because we have that understanding, we will act accordingly," he said, pledging congressional consultation before the end of the peace process.

Indyk also called on PLO chairman Yasser Arafat to give a "100 percent effort" to live up to his commitments.

As for the PLO's commitment to amend its covenant, which calls for the destruction of Israel, Indyk said he would continue to "encourage" Arafat to call a meeting of the Palestine National Council.

According to the Palestinians, the PNC is required to amend the covenant.

But Indyk said he fears that opponents of the peace process "would love an opportunity" to try to embarrass Arafat if he convened the PNC and it failed to amend the covenant.

Indyk had some harsh words for Syria. He called its continued sponsorship of terrorism "unacceptable."

Although the committee members were filled with warm praise for Indyk, outside controversy over the nomination found its way into the hearing.

On the night prior to the hearing, anonymous activists opposed to Indyk's nomination began circulating an alleged transcript of statements attributed to Indyk. The statements quoted him making anti-Israel remarks and denigrating Jews.

A one-page anonymous fax that was later circulated by Rabbi Avi Weiss, president of Amcha, claimed that in 1989, Indyk criticized now Israeli Prime Minister Yitzhak Rabin.

"Guys like Rabin, who was actually an ambassador to the U.S., think they know all about Americans but he actually doesn't have a clue about Americans," Indyk allegedly said.

In his opening statement, Sen. Brown called the statements "unsubstantiated" and said they had "no credibility and cannot be verified."

Although the issue was not raised at the hearings beyond Brown's statement, Indyk earlier in the day had told staff members of the Senate committee that he never made such comments and that they are a "fraud."

Concerned that his nomination would run into trouble from other Jewish organizations, Indyk called the leader of at least one Jewish group to head off potential opposition.

Morton Klein, president of the Zionist Organization of America, said Indyk called him at Indyk's own initiative on Wednesday to address any concerns that he might have over the transcript.

Indyk told Klein, according to Klein: "Certainly this is not the kind of thing I would say and I don't hold these views today."

Klein said the ambassador-designate told him that the alleged remarks were from six years ago and that he does not remember making them.

Melchior

(Continued from page 7)

rushing forward with a knife, but he is swallowed up by the other sons of Ishmael and disappears and his knife flies through the air and lands harmlessly in the empty space between them. One of the Jews comes charging forward with a pickax, but he was swallowed up by the other sons of Isaac and disappears and his pickax then flies through the air and also lands harmlessly in the empty space between them.

Gradually, all the weapons of both sides fly into this empty space in the middle and the two sides light them on fire. They have burned each other's buildings before in God's name, but now they burn the weapons of destruction necessary to create God's Temple.

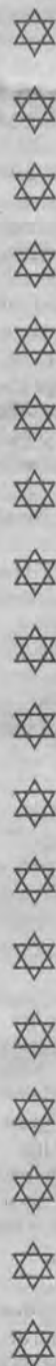
Finally, the student, understands.

So, the Temple was the empty space in between, he speculates. "I see," says the student. And that is why the Rebbe is painting this scene, to honor God's creations, not the creation of gods; godliness, not idolatry.

Rabbi David Kaplan of Temple Beth El thanked the speakers and Oneg followed the service.

Later Mr. Waskow explained that the Jewish renewal Movement's purpose is to "renew" contemporary Jews' interest in their own Talmudic tradition. He explained further that the goal was not simply to go back to the past, but to make "new, like it was in the beginning". Waskow said he sees Judaism as cyclical like Shabbos, something that is new and yet the same each week, and thus the best way to get to Judaism's past is to go to the future, and vice-versa.

Rabbi Kaplan told *The Jewish Voice* the greatest aspects of both the Jewish renewal movement and the evening were their emphasis on congregational and spiritual empowerment. "The people who reside in the house of the Lord," should be closer to the Lord," Kaplan said, are happy. He worries that instead of enjoying being Jews, some come to services expecting the rabbi to be their Jew, to do it for them. However, Kaplan said that he saw Temple Beth El maturing to overcome such an approach.



Writers Needed — Call Dan at 478-6200

OUR GENERATION: DEFINING THE JEWISH FUTURE

First Biennial

UJA Northeast Region Young Leadership Conference

March 18-20, 1995
Doubletree Hotel, Philadelphia

Get an insider's view of the vital issues; play an active role in the generation that will shape Jewish life in the 21st Century!

→ Reduced registration available until February 15th. ←

Join us for an informational program about UJA and the regional conference:

Monday, February 13, 1995
7:30 p.m. at the JCC.

For More Information Call:
Jon Foreman: 479-5247
Marla Feldman: 478-6200

Bonds Brunch

PHILADELPHIA — State of Israel Bonds "Singles Over 40" division will host a Sunday brunch to be held February 12 at 10:30 a.m. at MIA's at the Warwick. Jerry Sorkin, who has traveled extensively in the Arab and Islamic world searching out Jewish communities, will be the guest speaker. The cover will be \$15 per person.

The "Singles Over 40" division was initiated to meet the needs of single people, over the age of forty, who wish to be active in their Jewish community, while having the opportunity to meet and mingle with other singles.

For further information about the

event or securities offered by State of Israel Bonds/Development Corporation for Israel call Ellen Rofman or Adele Hager at 561-2663 or 800-752-5671.

State of Israel Bonds is an international organization offering securities issued by the government of Israel. Since its inception in 1951, Israel Bonds has secured more than \$14 billion in investment capital for the development of every aspect of Israel's economy, including agriculture, commerce and industry. Throughout its history, Israel has maintained a perfect record on the payment of principal and interest on the securities it has issued.

ORT Restructures

Women's American ORT, one of the country's singular organizations in Jewish life, has quietly begun the process of reinventing — and revolutionizing — its structure, mode of governance and basic way of doing business. With perhaps the most dramatic set of organizational changes since its founding in 1927, Women's American ORT is preparing to welcome the 21st century.

ORT is undertaking an organizational audit, making a long-range strategic plan and promoting recruitment.

Women's American ORT, an organization of membership chapters across the United States, supports vocational and technical training for

Jews around the world, particularly in the United States, South America, France, India, Morocco and Israel. It is the largest affiliate organization of the World ORT Union and a major source of financial support to its central budget.

More than 250,000 students presently are enrolled in ORT's 800 schools and projects which include comprehensive and vocational high schools, colleges, apprenticeship programs and teacher-training institutes. The ORT program encompasses some 50 countries and is the largest non-governmental network of vocational education and technical training centers in the world.

For further information, please contact Brandywine Chapter-at-Large Membership Vice President, Annette Aerenon, 764-1844.

AMJH Exhibits Open

PHILADELPHIA — "Strong Houses: Multimedia Works by Carol Hamoy" and "We Make Memories" by Abbe Don, opened at the National Museum of American Jewish History on January 19, 1995.

While each artist works with very different materials — one uses found objects to create textured sculptures, the other relies on computer technology — both artists consider the power of family history and memory in exploring their Jewish identities.

Hamoy's and Don's work remind us of the forgotten voices of women in the spiritual and cultural past. Over the last ten years Jewish artists, feminists and scholars have begun to reconceive Jewish spirituality and identity, reclaiming texts and examining the lives and work of women who, through the traditional study of history, have been ignored.

As artists, Hamoy and Don move between the intimate and the shared, linking immediate experience to ancient stories — Jewish, feminist, and American. Hamoy's sculptural collages explore Jewish female identity, tradition and spirituality, while Don presents a pictorial timeline that reveals family stories passed down matrilineally through four generations.

"Strong Houses" derives its title from one series of Carol Hamoy's work that will form part of the exhibition. Inspired by Proverbs 14:1, "The wisest of women builds her house strong," the pieces in this section feature three Jewish women: anarchist Emma Goldman, Rosa Sonneschein and Sadie American. Sonneschein was publisher and editor of *The American Jewess*, the first independent magazine written by and for Jewish women, and Sadie American, a woman's rights advocate, co-founded the National Council of Jewish Women.

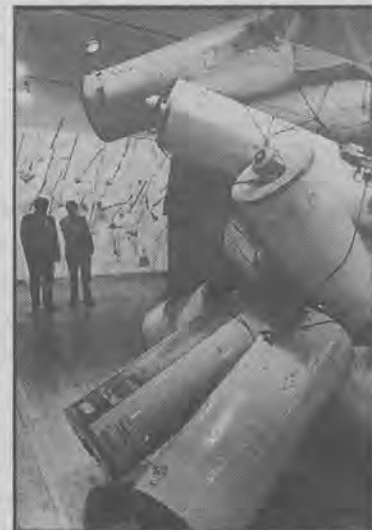
Hamoy has drawn her inspiration from a variety of sources — Jewish folklore, American history, the Bible, and her own family's past.

Abbe Don, creator of "We Make Memories" has chosen to focus on her great grandmother's storytelling style, both as a model of interactivity and as a way to preserve family history.

Through a computer-and-video-based artistic work, she preserves the experience of her great grandmother and her stories. "My great grandmother Annie told stories to nearly anyone who would listen as she bakad challah in her kitchen." For Don, as for many Jews, the kitchen was where Jewish culture was passed on through food and stories.

Viewers can move through time on the computer screen with a pictorial timeline of family photographs that date from 1890 to the present. "By clicking on one of the headshots," says Don, "we can hear stories from my great grandmother, my grandmother, my mother and me that weave in and out of the past and present, the old country and America, English and Yiddish, business and family."

"Strong Houses" and "We Make Memories" continue through April 24.



In the foreground is Nancy Rubins', *Drawings and Hot Water Heaters*, 1992. On the rear wall is Rachel Harrison's, *Untitled (Poles for a Dangerous Art World)*, 1992. (photo: Scott Mullin). Both are now showing at the Delaware Art Museum at 2301 Kentmere Parkway, Wilmington, DE 19806



WERTHEIMER MONUMENTS

Serving the Jewish Communities of Delaware and Philadelphia for 56 years.
We install monuments on all Delaware Cemeteries

מצבות

Located in Philadelphia - Convenient to Wilmington, DE
6720 Bustleton Ave., Close to Betsy Ross Bridge
For Appointment Please Call
215-333-1222 1-800-886-1219
Open Daily And Sunday

CREATE A LASTING MEMORY Plant Trees in Israel

A Circle of Trees	\$100
A Ring of 5 Trees	\$50
Individual Tree	\$10

A Living Link to the Land of Israel

CALL (302) 655-5995
MARYLAND/DELAWARE REGION
4 Reservoir Circle, Baltimore, MD 21208



ALAN GOLD **BOB GOLD**

B. Reibstein Memorials Art Monument Company


1603 Jessup St. Wilm, DE 19802 (302) 575-1450	Since 1895	1869 Cottman Ave Philadelphia, PA 19111 (215) 725-2200
---	---------------	--

Delaware's only Jewish Monument Dealer
Manufacturing and Showroom in Delaware

BOYD'S FLOWERS

Where artists bring beauty to bloom

421-2900
824 Market St. Mall
2013 Penna. Ave.



Schoenberg Memorial Chapels



In the hallowed tradition of our faith...

a dignified setting with reverence for customs and observances in strict accord with family wishes.

519 Philadelphia Pike
762-0334



HAPPY HARRY'S Health Care, Inc.

Leading the Way With Service!

- 24 hour Emergency Service
- Free Set-Up and Delivery
- Medicare & Third Party Billing

A Complete Line of Home Medical Equipment & Products

• Hospital Beds	• Walkers	• Diabetic Supplies
• Mastectomy Supplies	• Personal Care Products	• Ostomy Supplies

Three convenient locations

311 Ruthar Drive Newark, DE 19711 (302) 454-4941	Old Oak Center Dover, DE 19901 (302) 678-0504	16-A Trolley Square Wilm., DE 19806 (302) 654-8181
--	---	--

Call our Public Relations Department, 454-3390, for more information



L'Chayim

(Continued from page 5)

The parsha for this Shabbat (2/11) presents the command to the children of Israel (meaning all of us) to provide the necessary materials to light the "Ner Tamid" or "Eternal Light." The Sefas Emes refers to the flame as a metaphor for the intention behind a mitzvah, a holy act - in response to a divine request. Religious acts, mitzvot, cannot be accomplished by human will alone. But by connecting our religious acts with faith and commitment to our spiritual tradition, we awaken the Divine Power that is within us (and our acts), and thus "cause an eternal flame to ascend." Put another way, living active Jewish lives, connected to our spiritual tradition, will draw down a powerful force that will ignite an eternal flame, will perpetuate our tradition, and will help insure that our grandchildren are Jewish.

The imperative to all of us today, whether we have children or not, is to LIVE JEWISH! Live active Jewish lives that add conscious meaning and value to our lives. There is so much to living Jewish: Shabbas, holidays, Torah, prayer, tikkun olam, gemilut hasadim, etc. At least one of these practices should be adding deep meaning to our lives. If Judaism doesn't do this for us now, we should demand help from those for whom it does work, and perhaps especially from our rabbis. That's what they/we are here for! Only by such a demand, and subsequent integration into our lives, will we live lives that will inspire the next generation. If we can Live Jewish, we can at least prevent the continuation of these "neutral outsiders" who are so hard to reach.

So let us all draw on the Divine Power in our tradition to "lihaalot ner tamid," "light the eternal light" of our tradition, in our lives, and in the lives of future generations.

(Rabbi Booth is the Director of Hillel at the University of Delaware)

There's no charge to print your Naches announcement as space allows in The Jewish Voice. Send your typewritten Naches announcements and photographs to:

The Jewish Voice
Naches Section
101 Garden of Eden Road
Wilmington, DE 19803-1579

What's Cooking? Hamentaschen

The Sisterhood of Adas Kodesch Shel Emeth announces its annual hamentaschen bake sale.

The hamentaschen are available with any of the following 5 fillings: poppy, prune, cherry, apricot, and lemon and are priced at \$5. per dozen.

Orders for hamentaschen will be accepted until Feb. 12th. Please mail your order, with a check, to: AKSE Sisterhood, Wash. Blvd. & Torah Way, Wil, DE 19802; Att: Annette Baruch or you may call Annette (478-6365) and place your order over the phone.

Orders may be picked up at the synagogue on Sunday from 9 a.m. to 1 p.m. on the following dates: Feb. 26, March 5th, March 12th.

When you place your order, please indicate when you intend to pick up your hamentaschen.

Women Rabbis Now On-Line

The first computerized discussion group for and by women rabbis and women rabbinical students, WOMENRAB, is now available on Internet.

WOMENRAB, accessed on LISTSERV@JTSA.EDU, is a multidominational, international discussion group designed to provide a supportive, accessible sanctuary in cyberspace, according to program organizers. List members may discuss personal, professional, familial, emotional, spiritual, halakhic, and educational issues pertinent to women in the rabbinate. Other categories will be added as the month old program expands.

The list is under the auspices of the Task Force on the Jewish Woman of the Commission on Synagogue Relations of UJA-Federation of New York, and hosted by the Jewish Theological Seminary.

Those wishing to phone for more information should call (212) 836-1504.

Middle East Summit

(Continued from page 1)

Rabin said Palestinian fulfillment of its obligations in the self-rule accords would determine the pace of negotiations.

"We have a demand of the Palestinian Authority, and we will present it at every meeting," Rabin said.

The summit took place amid reports of deteriorating relations between Israel and Egypt.

In an interview published Wednesday in The New York Times, Moussa had sharply criticized Israel.

Moussa accused Israel of dragging its feet in implementing the autonomy accord and said the delay was the cause for the stepped-up terror attacks.

Syria, whose peace talks with Israel have been at an impasse for several months, was absent from the summit.

Moussa said Syrian President Hafez Assad was not invited because it was clear he would not send any representation and "we don't want to embarrass him."

Peres told Army Radio that Assad would have been welcome at the meeting.

Square Dance, Square Deal

The Sisterhood of Adas Kodesch Shel Emeth invites the community to participate in its 10th annual Square Dance & Dinner on Saturday, February 25th. This event will be held in the social hall of the synagogue located on Washington Blvd. & Torah Way in Wilmington. No prior square dancing experience is necessary.

Dinner starts at 7:30 p.m.; dessert and dancing at 8:15 p.m.

The cost of dinner and dance is \$15 per person. Dessert and dance only - \$7.50 per person.

Tables may be reserved for groups of 6 or more.

Please call Leona Weissman at 477-1254 (evening) or 428-0255 (day) for reservations by February 19th.

Just Say:
"The **JEWISH VOICE**
sent me"
You'll be an
instant
V.I.P.

When you can't breathe,
nothing else matters.
AMERICAN LUNG ASSOCIATION
1-800-LUNG-USA

Jewish Voice Personals

MITZVAH INTRODUCTIONS

Local, all ages, special offer:
LET US FIND YOUR SPECIAL SOMEONE!

1-800-747-1676

To respond to a Jewish Voice Personal write to:

The Jewish Voice - Personals
Box _____
101 Garden of Eden Road
Wilmington, DE 19803

**Your Return
Address
Required**

ABBREVIATIONS:

S - Single
J - Jewish
F - Female
M - Male
W - Widow, Widower
D - Divorced

To place a Jewish Voice Personal send your check and personal to:

The Jewish Voice - Personals
101 Garden of Eden Road
Wilmington, DE 19803

To place a one inch Jewish Voice personal ad is \$7. A one and one-half inch Jewish Voice personal ad is \$10. A two inch Jewish Voice personal ad is \$14.

CONTROLLER

Jewish Federation of Delaware

Management of financial operations and computer system, budget preparation, financial reporting, some personnel administration, supervision of bookkeeping department.

Salary commensurate with experience. Send resumé to Judy Wortman, Executive VP, JFD, 101 Garden of Eden Road, Wilmington, DE 19803 or fax to 302-478-5374.

McMaids

Housekeeping Service

- Same housekeeper weekly/bi-weekly
- Employees closely screened and trained
- Reasonable rates and customized service
- Licensed and insured

CALL **762-7623**

Andersen® Windows

Bows and Bays,
Doors and Skylights,
37-50% off list.
Windowizards

1-800-220-8707

Windows

Vinyl replacement, custom made, tilt-in, double-pane, insulated glass.

Guaranteed
\$75-\$99

Windowizards

1-800-220-3044

Railroad Ties:

6x6x8 new,
pressure treated.
\$10.80

Earl

1-800-355-7002

Hardwood Floors

New 1st Quality Bruce,
Mannington, etc...

**Big Discounts
Windowizards**

1-800-220-8740

ISRAEL BONDS

For sale, reinvestment
and redemption
information call:

**1-800-
752-5671**

SUPER FOX VALLEY



5% TUES. & WED. Feb. 14 & 15
TUES. & WED. Feb. 21 & 22
MON. & TUES. Feb. 27 & 28
SENIOR DISCOUNT 62 or Older (I.D. Required)

PRICES EFFECTIVE
FRI., FEB. 10th thru SAT., FEB 18th

We offer a synagogue discount program.
Call Mr. Fagan at 761-9620.

EMPIRE KOSHER
FRESH
**CHICKEN LEG
QUARTERS**
99¢ LB.

**NEW YORK'S FAMOUS
RATNER'S**
SOUPS (FROZEN) ASSORTED VARIETIES 15 oz. CTN.
\$1 39

EMPIRE KOSHER
FRESH
**SPLIT CHICKEN
BREASTS**
\$2 89 LB.

IN OUR BAKERY

JEWISH RYE BREAD (PLAIN OR SEEDED) 99¢ 1 LB. LOAF	HAVENTASCHEN \$3 99 6 PACK	CHALLAH PLAIN OR RAISIN \$1 99 LOAF	SOUR CREAM CAKE \$1 99 LOAF
--	--	---	---

**BREAKSTONE
COTTAGE CHEESE**
REG. or LOW FAT **2 FOR \$3** 1 LB. PKG.

VINTAGE SELTZER 1 LITER 4 FOR \$1 \$3.99 CASE OF 12	ASSORTED GOODMAN'S SOUPS 2 3/4 to 4 oz. BOX 99¢ EACH	MANISCHEWITZ UNSALTED MATZOS \$1 49 10 oz. PKG.
--	--	--

**MILLER'S KOSHER
AMERICAN CHEESE**
\$2 69 12 oz. PKG.

FRESH SLICED
LOX **99¢** LB.
REG. or NOVA

**HEBREW NATIONAL
KOSHER
CORNERED BEEF**
\$5 98 LB.

SMOKED
**JUMBO
WHITEFISH** **\$4 98** LB.

FRESH
**WHITEFISH
SALAD** **\$4 98** LB.

HEBREW NATIONAL
KOSHER
**SALAMI or
BOLOGNA**
STORE SLICED **\$5 98** LB.

Assorted
**VITA
JAR HERRINGS**
Party Snacks
Sour Cream ~ Tastee Bits
\$1 99 8 oz. JAR

FLOWERS BY ELAINE CUT FLOWER SPECIALS

BOXED LONG STEM RED ROSES	\$34 99 DOZEN
10 STEM ASST. SPRAY ROSES	\$9 99 BUNCH
SELECT CARNATIONS	\$4 99 DOZEN
BEAUTIFUL TULIPS	\$5 99 BUNCH
LARGE HEART SHAPE RED ANTHIRIUMS	\$11 99 1/2 DOZ.

PLANTS

4 INCH VIOLETS	\$1 99 EA.
4 INCH ASSORTED	\$2 99 EA.
SPRING BULB PLANTS	

Call Stephen Glickman at
FLOWERS BY ELAINE at **SUPER Thriftway**
762-3400

**Former
SEARS
Location**

Route 13 and Lea Boulevard, Wilmington
OPEN DAILY: 7am - 11pm Sunday 7am - 9pm

**DOUBLE
COUPONS**

