

The JEWISH VOICE

"You heard it in
The Jewish Voice"

PUBLISHED BY THE JEWISH FEDERATION OF DELAWARE 101 Garden of Eden Rd., Wilmington, Delaware 19803

Vol. 17, No. 6

Heshvan 28, 5744

November 4, 1983

16 Pages

Israeli Economy

Tel Aviv Stock Exchange Reopens

By GIL SEDAN

JERUSALEM, (JTA) — The drop in the price of commercial bank shares was more moderate than expected when the Tel Aviv stock exchange reopened for trading last month after an 18-day suspension. Panic selling, feared by some, failed to materialize, much to the satisfaction of the Treasury and the Bank of Israel.

Finance Minister Yigal Cohen-Orgad commended the public for demonstrating "reasonable behavior and maturity." Although bank share prices were down 17 percent Shekel value and 40 percent in Dollar value compared to the levels before the exchange closed, economic analysts agreed that the public has taken a "wait and see" attitude. Other shares traded on the exchange dropped by 10-15 percent.

Plans For The Economy

Meanwhile, Cohen-Orgad who replaced Finance Minister Yoram Aridor last month, announced his immediate plans for the economy to a gathering in Tel Aviv. He said he has already launched an effort to cut Israel's balance of payments deficit by half within the next two years. He said the government will promote exports and take measures to reduce imports.

This, he said, will necessitate a lower standard of living among the financially better off segments of society. But the weaker groups will not be harmed, he promised. "I can say that we have overcome the problems of the first stage and we can now go on in our plan, step-by-step, and balanced growth," he said.

Buying Spree Reverses

Zvi Amit, director general of the Chamber of Commerce, reported Friday that the buying spree which preceded the 23 percent devaluation of the Shekel two weeks ago has reversed itself. The 10 largest construction companies reported a continuing decline in sales, a trend that dates from the start of the year. Only 373 new flats were sold in

(Continued to Page 11)

Milton Kutz To Be Honored Posthumously

Milton Kutz, one of the top outstanding philanthropists and leaders in the Delaware Jewish community, will be posthumously honored in the Milton and Hattie Kutz Home, 704 River Road, near Wilmington Sunday, Nov. 13 at 3 in the afternoon in connection with the observance of his 100th birthday anniversary.

Mr. Kutz who was born on Oct. 26, 1883 had been a high level official of the Du Pont Co., and one of the first Jewish residents of Delaware to have achieved that status in the company since it was formed back in 1802.

The Nov. 13 program to which the general public has been invited, is being arranged by the Jewish Historical Society of Delaware in cooperation with the Kutz Foundation, the Kutz Home, and the Jewish Federation of Delaware of which Mr. Kutz had served as president with distinction.

One of the features of the commemorative program will be the presentation of a portrait of Mr. Kutz, painted by Ruth Egri Holden, with remarks by Hilda Codor who knew Mr. Kutz as a friend and as a member of the Jewish Federation staff.

Yetta Chaiken will give the history of the transition of the Ladies Bichor Cholem Society to the Kutz Home, thanks to the philanthropy of Mr. and Mrs. Kutz.

Dr. Charles Levy and Rabbi Herbert Drooz will present personal reminiscences of Mr. Kutz and his contributions of the Jewish and general community of Delaware.

Milton Kutz died 30 years ago after an illness of about a year. He was then living at 1506 Pennsylvania Ave., Wilmington, having retired in May, 1946 as assistant general manager of what was once the R. and H. Department of the Du Pont Co., later known as the Electrochemicals Department.

The Milton Kutz' story is somewhat similar to the old Horatio Alger annals, a poor boy who made good in the chemical world. He began to work when he was 14 years old as an office boy in the firm of Roessler and Hasslacher Co., in Buffalo, N.Y. He advanced steadily to stock clerk, purchasing, sales, and manager of the Philadelphia office. He became sales manager of the firm in 1922, a member of the board of directors in 1926 and vice president and manager of sales in 1928.

When the R. and H. Co., merged with the Du Pont Co., in 1930, Mr. Kutz came here as director of sales and later moved up to the assistant general managership of electrochemicals.

(Continued to Page 10)



Milton Kutz

Years-Long Struggle To Ordain Women As Conservative Rabbis Ends In Victory

By BEN GALLOB

NEW YORK, (JTA) — The faculty of the Jewish Theological Seminary of America approved last week, by a large majority, the admission of women to the JTS rabbinical school for ordination as Conservative rabbis and one Conservative rabbinical leader said he was skeptical about reports that the decision would cause a major split in American Conservative Judaism.

The vote of 34-8, at a special meeting called by JTS chancellor Gerson Cohen, ended a long-running controversy in the movement, in which a steadily growing number of Conservative rabbis endorsed admission of women by the JTS for ordination, while a substantial number of JTS faculty members remained in adamant opposition.

There are 55 faculty members at the JTS. Three from the Talmudic program boycotted the meeting last week. The 42 present at the meeting represented nearly 75 percent of the total Faculty Senate and the affirmative vote for admission of women was by a similar majority.

Responded To Challenges

Cohen, who headed the commission he named in 1977 to study the controversial issue, and who was chairman of the meeting last week, said after the vote that he regarded it as "evidence that the Seminary and the Conservative movement in American Judaism are able to respond to the challenges of modernity in traditional terms."

After the 34-8 vote, a second motion was passed which called on Cohen to name a committee, with Dr. Joel Roth, associate professor of Talmud and Rabbinics and Rabbinical School Dean, as its chairman, to review and recommend criteria for admission of all candidates to the Rabbinical School, subject to approval by the JTS chancellor. Roth has proposed the motion for admission of women.

The skepticism that the approval action would bring a schism in the movement was expressed by Rabbi Wolfe Kelman, executive vice president of the Rabbinical Assembly, the association of Conservative rabbis. He told the Jewish Telegraphic Agency that it was expected that the first women would be admitted to the ordination program at the JTS in September, 1984.

The Conservative movement thus joins Reform and Reconstructionism in ordaining women as rabbis. There are now some 60 women rabbis, most of them holding positions as assistant rabbis, others in administrative and teaching posts. The (Reform) Hebrew Union College - Jewish Institute of Religion, began the process more than 10 years ago by ordaining Sally Preisand as the first woman rabbi in American history.

Some 25-30 Women Expected As First Members

Kelman offered a "guess" that 25 to 30 women will be admitted as the first women members of the JTS Rabbinical School. He said he agreed with Cohen that the vote would not cause any schism in

(Continued to Page 8)

Table of Contents

Federation News	p.2
Columnists	p.3
Editorial Page	p.4
Religion and the Public School	p.5
Naches Nook	p.6
Hillel News	pgs.7, 15
JCC Page	p.9
JCRC	p.11
Hebrew Column	p.11
Kutz Home News	p.12
Gratz News	p.12
AEA News	pgs.12, 16
Jewish Family Service	p.13
Dear Rachel	p.13
Obituaries	p.14
Organizations in the News	p.15
Classified Ads	p.16

**Jewish Federation of Delaware
1984**

**Men's Division Inaugural Dinner
Wednesday, December 14, 1983**

**Guest Speaker:
The Honorable Benjamin Netanyahu
Deputy Foreign Minister
Embassy of Israel**

Minimum Gift
\$5000

Paul R. Fine, Advanced Gifts Chairman
David J. Singer, General Chairman
1984 Federation Campaign

(More Information To Follow)

**Yetta Chaiken Appointed
Jewish Voice Chairman**

Leo ZefTel Jewish Federation of Delaware president has announced the appointment of Yetta Chaiken as chairman of the Jewish Voice Committee.

"I am delighted that Yetta has accepted this important position," ZefTel commented, "and I know she will bring to the Voice the same energy, enthusiasm and capability that she brings to all her endeavors."

Yetta Chaiken has been actively involved in both the Jewish and general community for many years. She served on the board of directors of the Jewish Community Center, and has had leadership roles with the League of Women Voters and the Women's Division of the Jewish Federation, in both campaign and year-round education programs. She has been instrumental in the preparation and compilation of a number of oral histories, particularly with older members of our Jewish Community. These histories are now part of the



Yetta Chaiken

records of the Jewish Historical Society, of which she has been an active board member.

**The Women's Chai Division:
A New Division With A New Level Of Commitment**

The Women's Division of the Jewish Federation of Delaware has established a new division: the Chai Division. This division, for contributors of

\$1,800 or more, derives its name (and level of giving) because *chai* - 18 - means life. As Francia Isakoff noted at the division's first annual event,

"Art in Rittenhouse Square," "We as committed Jews spend many hours striving for goals...striving for life...we must never stop."

also be suspended from a chain and worn as a pendant.

According to Margaret H. May and Marjory Stone Levine, Chai Division co-chairwomen, their first event raised a total of \$26,350, and it is anticipated that many more women will soon be receiving this special pin at the Nov. 7 Pacesetter event.

All women who join the Chai Division are awarded "The Silver Pomegranate Pin" as a token of their commitment. The pin, which is now proudly worn by seven women, can

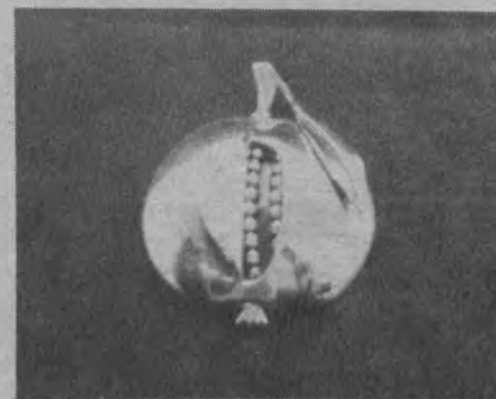


At the luncheon at the Barclay are, (l-r) Margaret H. May, Chai Division co-chairwoman; Jeanett Eichenwald, guest speaker; Marjory Stone Levine, Chai Division co-chairwoman.



Pat Spiegel pins a silver pomegranate pin on Margaret H. May.

The Silver Pomegranate Pin



has been awarded to:

- Yetta Chaiken
- Dora Dukart
- Francia Isakoff
- Marjory Stone Levine
- Margaret H. May
- Joanne Singer
- Pat Spiegel

WHAT'S HAPPENING Kolya Gavish



Jerusalem — The Capital Of Israel

"Time is running out," so warned Senator Patrick Moynihan. He was speaking at a recent meeting of the National Jewish Community Relations Advisory Council. He was talking about the establishment of the United States embassy in Jerusalem, Israel.

Did you know that the United States passports of Americans born in Israel in Jerusalem carry only "Jerusalem" as their place of birth?

The senator has recently introduced an amendment to the State Department Authorization Bill which declares that "no funds are to be made available to a United States embassy in Israel save for Jerusalem."

He told us that the USSR has been waging a campaign to delegitimize Israel since the Six Day War in 1967. At that time the Russians saw Soviet-trained Arab armies defeated by the Israelis and realized that Israel could not be defeated militarily. So they undertook a sustained effort to demonstrate to the world that Israel is not a legitimate state.

Parenthetically both Syria and Israel's legal status is derived from the same source—the mandate system that came into being following the defeat of the Ottoman Empire during World War I.

By 1970 "Zionism is racism" had been shouted before the world by Israel's enemies and introduced at all international proceedings where Soviet, Arab and their sympathizers participated. It was not a coincidence that about the same time the Syrian army with its Soviet weaponry moved into the Bekaa Valley in Lebanon bringing along the PLO.

Since then there have been continual references to the "Zionist entity" by Israel's enemies. Recently the delegitimizing campaign has been expanded to include Jerusalem. All of Jerusalem is now being identified as "occupied Arab territory."

"So 35 years and eight administrations later," the senator says, "it is urgent that the United States establish its embassy in Jerusalem." "At the present time it is not clear to the world that the United States has committed itself to the existence of Israel." He warned that as long as the U.S. commitment is ambiguous, terrible things can happen.

He told us that Senator Charles Percy has promised to hold hearing of the Senate Foreign Relations Committee on this issue but up to now these hearings have not been held.

"Time is running out."

FRANKLY SPEAKING Zev Amity



Drinking, Gambling: A Rabbi Speaks Out

For the first time, at least in my memory, a Wilmington rabbi has spoken out strongly, plainly, and I hope effectively against Jews overindulging in gambling and drinking.

"Gambling — maybe he should talk about," I hear you say, "but drinking? Why drinking?"

And I reply, "Why not drinking? Why do we Jews think only *goyim* are drunks?"

Before you can ever answer that, I must add,

"Yes, we have all chanted for years, *'Shikker vee a-goy'* but — as Rabbi Kenneth Cohen of Beth Shalom warned us on the first day of Rosh Hashanah,

"True, there is a significantly lower rate of drinking and, correspondingly a lower incidence of alcoholism among American Jewish men and women. A cause for a toast? Better hold off the *l'hayyim*."

"Sociologists suggest that all this is bound to change as the control Jewish communities exercise over the individual continues to diminish, as opportunities to drink in social and professional contexts continue to increase."

"In other words," Rabbi Cohen added, "the more we assimilate into an environment that touts drinking as

glamorous, desirable, and fashionable, the more likely we are to engage in it. And the more we drink, the greater the chances of more of us becoming alcoholics."

And then, Rabbi Cohen directed attention to a more realistic problem among Jews: gambling.

One of the gags kicked around for years has been the crack that Jews have two leading diseases: Diabetes and gambling.

I always heard it said that in Jewish social clubs, drinking was minimal but gambling was excessive.

And there was always the story that when the late H. Albert Young was elected the Delaware attorney general, one of the first things he did was to warn the Brandywine Country Club, off the Concord Pike, to get rid of its illegal slot machines.

Rabbi Cohen stated in his sermon, "From what I can judge, gambling became a problem for Jews whenever it was a problem for Gentiles. When the larger society had a permissive attitude toward gambling, it often happened that Jews, despite their traditional values, went ahead and followed suit."

Rabbi Cohen mentioned the name of Jerry Fulcher, a controlled com-

(Continued to Page 10)

ISRAEL ISSUES Ze'ev Golin



Menachem Begin And The Great Change

(Rishon le Zion) Menachem Begin is no longer prime minister. His six years at the helm were very controversial, and the jury is still out on his accomplishments. Nevertheless, his tenure had considerable physical, political, and psychological impact on Israel.

The triumph of Menachem Begin was the triumph of the vision of Ze'ev Jabotinsky, the founder of Revisionist Zionism. Jabotinsky advocated a capitalist, urbanized, industrialist and ethnically diversified Jewish state. Under Begin, Israel took tremendous strides in realizing this vision.

The trend was evident long before the Likud victory of 1977. Yet the ruling Labor alignment denied reality for 29 years, doing what it could to create a homogeneous, socialist, and largely agrarian state. Thus, many aspects of the "revisionization" of Israel were repressed, lying beneath the surface until Begin came to power.

In 1977, Begin lifted a wide variety of restrictions on possession of foreign

currency and on private investment. The result was the release of a pent-up capitalist urge. Industries expanded rapidly and became more diversified. The pace of high-tech development outstripped that of the rest of the world. A new building boom changed the emphasis from agricultural settlements, development towns and public housing to luxury suburban housing, office buildings and commercial centers.

A by-product of Israel's new capitalism was a rampant consumerism that had yet to abate in 1983. While much of the world suffered from a depressed consumer goods market, Israelis snapped up automobiles, color televisions, home videos (300,000 sets in two years) and imported furniture and housewares. Many forsook cramped apartments for spacious villas. Consumerism was a much commented-upon and criticized in a country that once prided itself on self-denial. However, after all those years of observing the comfortable lifestyle of western Jewry, it

(Continued to Page 10)

ON THE OTHER HAND N. Even-Or



Volunteerism In Sodom And Gomorrah

Were there any institutions like the Jewish Federation, United Way or ACLU in Sodom or Gomorrah? There's a question for those who think the Torah isn't "relevant"!

The great 11th century Spanish commentator, Abraham Ibn Ezra, had some cogent thoughts on the subject of volunteerism, based on a few brief words of Torah. These thoughts contain the answer to my tongue-in-cheek question.

First, let's set the stage.

God appears to Abraham by the terebinths of Mamre to tell him that Sarah will bear him a son, Isaac. After this joyous news, He informs Abraham of His plans for Sodom and Gomorrah, because "their sin is exceeding grievous." Abraham responds with a passionate plea to spare the city because of the righteous ones who are in it.

"Wilt Thou indeed sweep away the righteous with the wicked?" he asks. "Perhaps there are 50 righteous within the city; wilt Thou — not forgive the place for the 50 righteous that are therein?" And then the most

astounding challenge, that makes God subject to His own laws: "Shall not the Judge of all the earth do justice?"

God's reply is swift. He accepts Abraham's argument without rebuttal: "If I find in Sodom 50 righteous within the city, then I will forgive all the place for their sake." As we know from this beautiful text, Abraham presses his point still further, finally obtaining God's promise that if even 10 righteous ones are found within the city, Sodom will be spared.

The commentators on these few powerful sentences have been many over the last, 2,500 years, most of them concerned with the ability of the righteous, the good people, to save those about them who are evil. The righteous remnant saves by its very existence.

Ibn Ezra, in his "Commentary to the Torah," saw further implications in the form of the phrase, "If I find in Sodom 50 righteous within the city." Why both "in Sodom" and "within the city?" Why this repetition and ap-

(Continued to Page 10)

Editorial

Economy Shop Expands Volunteers Urgently Needed!

The Federation Economy Shop has made tremendous strides during the past year. Under its new re-organization, with Bernie Sachs as manager and Harold Levitt as Federation liaison, the store has positively blossomed.

As the business grows, more employees are needed. And the more employees we hire, the less profit we produce.

Volunteers can make the difference. Federation Thrift Shops in other cities have a volunteer waiting list! We don't need a waiting list, but we do need lots of volunteers, and we hope this urgent appeal elicits a wide response from our Voice readers and members of the Jewish community.

The Economy Shop, which is located at 611 King St. (near the Radisson), is bright, clean and comfortable. Volunteers may work one day a week for four or five hours. Transportation can be arranged if necessary.

So far, we haven't had many volunteers, but we think that it must be because you don't know about us. We refuse to believe that Wilmington doesn't care. It's fun to work in the Shop, and the income, as stated, goes to the Jewish Federation of Delaware's Annual Campaign.

So please, call our manager, Bernie Sachs, today - 655-8437 to volunteer.

LETTERS to the Editor

Dear Editor,

We would again like to call the attention of your leaders to the availability of a Shomer Shabbos Straight Medical Internship and Residency Program at Hahnemann University School of Medicine and Hospital in Philadelphia. The program, now in its third year, has proven to be highly successful for its participants.

Interested applicants should reply as early as possible to:

Joel Betesh, M.D.; Residency Program Director; Department of Internal Medicine; Hahnemann University School of Medicine; 230 North Broad Street; Philadelphia, PA 19102.

We would be glad to answer any personal questions and may be contacted at the above address.

Sincerely, Mark Levitt, M.D., Ph.D. Robert Lesser, M.D. David Levy, M.D. David Lackner, M.D. Medical Resident Department of Internal Medicine

Know Any Newcomers?

If you know any newcomers to the community, please let us know. We'd like to pay them a visit, welcome them to the community, give them our "newcomers package" and help answer their questions.

Call the Jewish Federation of Delaware at 478-6200 with the names of anyone who is new in town. We'll give them a hearty "Shalom."



SAVE THE DATE: Sunday, January 15, 1984 Jewish Federation of Delaware SUPER SUNDAY (Watch Voice for additional information) Volunteer Your Services Now!

WE GIVE TO LIFE

THE JEWISH VOICE (USPS-704160)

Second class postage paid at Wilmington, De. Published semi-monthly, and monthly in July and August, by the Jewish Federation of Delaware. 101 Garden of Eden Rd., Wilmington, De., 19803. Subscription price \$5.00. Mailed to subscribers who are contributors to the Jewish Federation of Delaware. POSTMASTER: Send address changes to The Jewish Voice, 101 Garden of Eden Rd., Wilmington, De. 19803.

DEADLINE

The next issue of The Jewish Voice will be published FRIDAY, NOVEMBER 18. The deadline for stories and photos is noon, WEDNESDAY, NOVEMBER 9. Material should be sent or brought to the Jewish Voice office at the Jewish Federation of Delaware, 101 Garden of Eden Rd., Wilmington, 19803. All articles must be typed, double spaced.

The Jewish Voice

Published semimonthly, and monthly in July and August, by the Jewish Federation of Delaware.

Editorial opinions expressed in this newspaper are those of the newspaper and not those of any individual. Signed editorials do not necessarily represent the view of the newspaper but rather express the view of the writer.

Jewish Federation of Delaware, 101 Garden of Eden Road Wilmington, De. 19803

Subscription Price: \$5.00

Circulation 3,000

Mailed to subscribers who are contributors to Jewish Federation of Delaware Second Class Postage paid at Wilm., Del.

KAREN G. MOSS, EDITOR

Editorial Committee: Edwin Golin, chairman; Nisson Finkelstein, Beverly Hindin, Leonard Lipstein, Simon Steinberg.

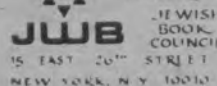
Newspaper Committee: Simon Steinberg, chairman; Marsha Barin, Dr. Steven L. Edell, Bennett Epstein, Nisson Finkelstein, William Frank, Edwin Golin, Beverly Hindin, Irving Kaufman, Irving Levitt, Leonard Lipstein.

Morris Lapidus, Executive Vice President Yetta Chaiken, Newspaper Chairman

No material will be accepted by The Jewish Voice which is considered against the best interests of the Jewish community.



THE FORMAT OF THIS POSTER IS MODELED AFTER A PAGE OF TALMUD WHERE THE TEXT OF THE MISHNAH AND OF MARAM CENTRALLY PLACED WITH THE COMMENTARIES AND INTERPRETATIONS OF RASHI AND TOSEFOT PLACED ON EITHER SIDE OF THE TEXT. QUOTATIONS WERE CHOSEN TO REFLECT THE SCOPE AND DIVERSITY OF JEWISH HISTORY AND LITERATURE. JAY GREENSPAN DID THE CALLIGRAPHY AND DESIGN OF THIS POSTER.



JEWISH BOOK MONTH

הודש הספר היהודי... אנו מודים לך על שאתה עושה לנו את החודש הזה... אנו מודים לך על שאתה עושה לנו את החודש הזה... אנו מודים לך על שאתה עושה לנו את החודש הזה...

The general interest poster, designed by Jay Greenspan, author of Hebrew Calligraphy: A Step-by-Step Guide (Schocken Books), is in the format of a page of Talmud.

GUIDELINES AND PRACTICES ON RELIGION AND THE PUBLIC SCHOOL

Irving Levitt, Chairman
Jewish Community Relations Committee of
the Jewish Federation of Delaware

During the winter and spring holiday season there are questions invariably raised about the role and responsibility of public schools in the celebration of religious holidays.

In view of this, the Jewish Community Relations Committee of the Jewish Federation of Delaware feels that it might be helpful to our entire Jewish community if the "National Guidelines of National Jewish Community Relations Advisory Council on Religion and the Public Schools" were made known through the *Voice*. These guidelines are therefore being printed for your background and reference.

Additional copies of these guidelines are available upon request from:
The Jewish Community Relations Committee
Jewish Federation of Delaware
101 Garden of Eden Road
Wilmington, DE 19803

POLICY STATEMENT

THE FIRST AMENDMENT — SEPARATION OF CHURCH AND STATE

Religious freedom and liberty, one of the cornerstones of American democracy, is protected against government interference or encroachment by the First Amendment to the United States Constitution. This Amendment states in part as follows:

Congress shall make no law respecting an establishment of religion, or prohibiting the free exercise thereof...

Decisions of the U.S. Supreme Court over the years have defined and reaffirmed this Constitutional guarantee in relation to the public schools of the nation.

PUBLIC SCHOOLS MUST BE RELIGIOUSLY NEUTRAL

The principle that public schools shall be religiously neutral has been established and accepted in a long line of Supreme Court decisions. The Supreme Court has defined "religiously neutral" as refraining from:

- promotion of any and all religions.
- expressions of oppositions or hostility to religion.
- showing preference for one religion over another.

SCHOOLS MAY TEACH "ABOUT" RELIGION

Public schools should take cognizance of religion and its role in our society. Programs which teach *about* religion and its role in the social and historical development of civilization do not violate the religious neutrality of the public school. Schools, however, should avoid religious observances, devotions, or celebrations. In no event should any student, teacher, or public school staff member feel that his or her own beliefs or practices are being questioned, infringed upon or compromised by programs taking place in or sponsored by the public schools.

NEUTRALITY IS SOUND EDUCATIONAL POLICY

Religious neutrality is not only mandated by the Constitution; it is also sound educational policy. Introduction of religion into the schools can only serve to make some children uncomfortable. Religious celebrations often force children to choose between participating in the celebration or isolating themselves from their classmates by not participating. The U.S. Supreme Court has long recognized the great pressure on children to conform with their peers. Accordingly, schools should avoid practices which operate to single out and isolate the "different" pupils and thereby serve to embarrass and harass those children who wish to be excused.

SIX SUGGESTED PUBLIC SCHOOL PRACTICES

I. SCHOOLS MAY TEACH ABOUT RELIGION AND RELIGIOUS FREEDOM

Factual and objective teaching about religion should be distinguished from religious indoctrination which is forbidden in all public schools:

- Intercultural programs focusing on the role that religion has played in history or the development of society are generally acceptable and desirable in a multi-ethnic society.
- Programs should be encouraged which educate students about the principle of religious liberty, as one of the central elements of freedom and democracy in America.

II. THE TOTAL EFFECT OF MUSIC PROGRAMS SHOULD BE NON-RELIGIOUS

A musical program prepared for and presented during school hours should not be, nor have the effect of being, religiously oriented or a religious celebration. While individual religious pieces of music may be performed for their musical value, the total effect of a music program or concert should be non-religious. However, the study of religious music as part of a music appreciation course, or as part of a study of various lands and cultures, is appropriate.

III. STUDENT EMBARRASSMENT SHOULD BE AVOIDED.

Teachers may explain the meanings of religious holidays provided every effort is made to obtain adequate and authentic information on matters pertaining to religion. Teachers should avoid the potential embarrassment of asking students to explain their own religious practices or observances, or to bring religious objects to class as a basis for a discussion of holiday observances.

IV. RELIGIOUS PROGRAMS MAY NOT BE HELD UNDER PUBLIC SCHOOL AUSPICES

Religious programs, holiday observances or celebrations, under public school auspices, whether on or off school premises, whether optional or compulsory, violate the First Amendment and should not be held. In this context, the following do not belong in the public school.

- A worship service or religious ceremony of any kind, regardless of whether or not conducted by a clergyman.
- Religious symbols — defined as any object which portrays, recognizes, or suggests the existence of a supreme being or deity; e.g. Nativity scenes, crosses, Stars of David, Buddhas, etc.
- The presentation of religious dramas as part of a holiday celebrations or observance.

V. JOINT HOLIDAY OBSERVANCES ARE EQUALLY UNDESIRABLE.

Joint celebrations (Christmas-Hanukkah, Easter-Passover) only serve to introduce more improper religious observances into the public schools. This tends to place holidays in competition with one another, thus distorting each holiday as a distinctive religious experience in its own right.

VI. RELIGIOUS HOLIDAYS ARE EXCUSED ABSENCES

A pupil's absence from school on a religious holiday should be recognized as an excused absence, without penalty on scholastic or attendance records. So as not to penalize students for their religious observance, the scheduling of examinations, assemblies, field trips, graduation exercises, and other special events, including school-related programs for parents, should be avoided on religious holidays.



WE KNOW HOW TO HELP

WILMINGTON	575-1700
NEWARK	738-3500
CONCORD PLAZA	478-6110
DOVER	1-734-5379

Gilbert J. Spiegel
Founder

Pat Spiegel
President

ISRAEL BONDS

For sale and redemption
information call:

478-2087

Support A Supporter Of Our Community

First State Bookkeeping Service

offers general bookkeeping
for small businesses.

764-6420

Naomi J. Weiner

Israel Bonds Dinner To Honor Thelma Deitcher

Thelma Deitcher, longtime community leader in the Wilmington area will be honored by members of the Brandywine Country Club at a State of Israel Bonds Tribute dinner-dance, Saturday, Nov. 19 at the club, 4201 Concord Pike.

The gala event will begin with a reception at 7 p.m. and a dinner at 8 p.m. Entertainer for the evening will be television and club comic and singer Emil Cohen, himself a native of Wilmington.

Deitcher is a board

member and secretary of Brandywine, is secretary of the club's Women's Golf Association and served as chairman of the club's first Israel Bonds Tribute dinner in 1980. She has been an active bonds campaigner since its inception in 1951.

Brandywine president, Robert A. Kauffman, announced honorary chairmen for the tribute dinner are Dora Eisenstat and Bernard and Ruth Siegel. Serving as co-chairmen are Dr. Jerome and Barbara Eisenmen,



Thelma Deitcher

Sidney and Reba Levy, Oscar and Betty Shapiro and Harry D. and Gladys Zutz. Associate chairmen are Rhea Levy and Celina Riebman.

Deitcher, a retired speech pathologist, is a charter member and current secretary of the Delaware Speech and Hearing Association. Appointed by Gov. Pete duPont, she serves on the State Board of Licensure for Speech Pathologists, Audiologists and Hearing Aid Dealers.

In Jewish affairs, she is a

vice president of Temple Beth Shalom, past president of its sisterhood and serves as sisterhood chairman of the Torah Fund Campaign for Jewish Theological Seminary. She is also a vice president of the Sabra Group of Hadassah and past chapter president.

Thelma and Louis are parents of a son, Warren, married to Kathy, and grandparents of their children, Jason and Cara; a daughter, Eileen, married to Scott Bengston, and a second daughter, Candy.

Brandywine School District Develops Awareness Of Jewish Holidays

Frank J. Furgele, district superintendent of the Brandywine School District, has widely distributed guidelines and recommendations concerning the observances of Jewish holidays by Jewish students.

In the spring of 1983, Furgele appointed Wayne Von Steeten, principal of Brandywine High School, chairman of an Inter-Faith Calendar Committee.

Members of the committee consisted of members of various religious groups such as Greek Orthodox, Catholic, Muslim, Hindus and Jews as well as parents of students and three school administrators.

The committee recommendations were approved by Furgele. They included a list of all Jewish holidays for the 1983-84 academic year with a notation that the Jewish

holidays are celebrated from sundown the previous day to sundown on the day(s) listed.

Furgele stated, "Whenever possible, you (teachers and educators) are asked not to schedule tests, major term papers, significant class reports, parent meetings, or other important happenings on these dates."

The major problem that the Brandywine School District had to face were with the June final examinations scheduled June 4-6 which was set during Shavout 1984. The committee felt that the dates could not be changed without great hardship but offered four options including: Jewish students could request make-up examinations on June 9, June 11 or June 12; could take their examinations early (before the examination period), take examina-

tions during the afternoon hours of June 4 and 5, or could take examinations during the regular period.

The committee, Frank Furgele and Wayne Von Steeten should be commended for their sensitivity, concern, equitable and reasonable resolution of the situation.

Nook Naches



Judy Swanner

Wedding

Jacobs-Swanner

Judy Melinda Jacobs, daughter of Dr. Lawrence and Anne Jacobs of Wilm-

ington, and David Charles Swanner son of William and Marina Swanner of Columbia, Md., were married on Oct. 29 at the Hotel duPont. Rabbi Paul Swerdlow officiated. Maid and matron of honor for their sister was Robin J. Jacobs and Dr. Laurie B. Jacobs. Bridesmaid was Karin Fink. Best man for the groom was Anthony Papandrea. Ushers were William Swanner, Jr. and Robert Swanner, brothers of the groom. After a wedding trip to Nassau, the couple will live in Greenbelt, Md.

Birth

Dr. Beverly N. and Dr. Richard N. Hindin of Webster Farms are proud to announce the arrival of their son, David Ian, who was born Oct. 28.

The grandparents are Hilda Narod of Philadelphia, Pa., and Dorothy and Gerald Hindin of Mendham, N.J.

If you would like to share your *simcha* with the community, send a typewritten article to The Jewish Voice, 101 Garden of Eden Rd., Wilmington, Del. 19803. Enclose, along with the article, a check for \$10 for an article, or \$15 for an article with a photo. Checks, which are tax deductible, should be made out to The Jewish Voice.



FAIRFAX VALET
PROFESSIONAL
CLEANERS & LAUNDREERS
'Old Master'
Invisible Mending
Fairfax Shopping Center
Route 202 (Concord Pike)
652-6725

THE ECONOMY SHOP
NEEDS FURNITURE
CLOTHING AND HOUSEHOLD GOODS
TAX DEDUCTION
PICKUP SERVICE
PHONE: 655-8437

Hold on to the joy of your SIMCHA
Let us decorate with live green and flowering plants for your Bar or Bat Mitzvah!

CALL FOR FREE ESTIMATES

GIFTS
JEWELRY
PLANTS - WICKER
POTTERY
HOME DECOR

Gazebo

109 W. NINTH ST., WILMINGTON, DEL. 19801 • (302) 655-6585

10% DISCOUNT WITH THIS AD

Diamond State FORD

DELAWARE'S #1 Ford Dealer

Find out why

•Sales •Service •Leasing •Parts

303 E. Cleveland Ave., Newark • 738-0800

Jewish Students At The University Of Delaware Are Alive, Well And Concerned

By ROBERT KERBEL

I have just returned from spending a delightful afternoon with two students at the University of Delaware, David Lowenstein, last year's Federation campaign chairman and Dina Burt, this year's chairman and Rabbi Bob Gluck, our Hillel counselor. David, as chairman of last year's campaign on campus, spent his winter vacation of 1982-83 in Israel with the United Jewish Appeal Student Leadership Mission. David is from Margate, N.J. Dina, this year's campaign chairman, is a sophomore from Baltimore, Maryland. Her mother was very involved in Super Sunday in Baltimore a few years ago.

The enthusiasm of these two students in terms of planning the 1984 Federation campaign was contagious. In one afternoon the development of the entire campaign, including recruiting workers, orientation for workers, workers' rally, assignment of cards, participation in Super Sunday and campaign solicitation were all scheduled.

The commitment of these two young people to the survival of the Jewish people and to the organizations of the Jewish community should certainly be an inspiration to all of us.

However, all is not rosy at the University of Delaware. There have been a number of neo-Nazi, anti-Semitic and anti-Israel incidents on campus. There is a very strong pro-Arab lobby. Though the



David Lowenstein



Dina Burt

Jewish students represent 10% or more of the student body, the students admitted it was not easy to have a Jewish life on campus. Dina and David both felt that many of the Jewish students are not aware of issues facing Jews. They also felt that students do not understand the organizational structure of Jewish communities, either here in Delaware or from the communities from which they come.

Presently there are 1,100 students who have listed being Jewish as their religious preference on their registration cards. It is suspected that there are another 300 additional Jewish students.

Rabbi Robert Gluck, our Hillel counselor stated that there are monthly faculty lunches. The faculty are presently concerned about two issues. One is the scheduling of calendars around Jewish holidays and the other is anti-Semitism on campus.

The University of Delaware had their first day of classes

during Rosh Hashanah. Though many attempts were made to have the calendar changed, the University did not do so.

Two other issues that the youth feel are very problematic are: presently the Hillel Foundation has been housed at Temple Beth El, in Newark which is just a half of block off campus. Temple Beth El has made available their facilities to Hillel. However, Temple Beth El will be moving in the spring of 1984 to new facilities about five miles away from campus and their present building is

(Continued to Page 14)

Need office furniture fast?



We have it all in stock, a huge selection for immediate delivery.



BERGER BROS. INC

Office experts since 1919.

Located at 3rd & Market, Wilmington
302-655-7166

Israeli Chassidic Festival

'83

ANNOUNCING EXCLUSIVE AREA PERFORMANCES SUNDAY NOV. 6, 1983

TWO PERFORMANCES:
2:00 PM
7:00 PM

VALLEY FORGE MUSIC FAIR

<p>TICKETS: \$9, \$13, \$16, \$20 \$25 Patron, \$50 Sponsor</p>	<p>GROUP DISCOUNTS & TICKET ORDERS Call Lawrence Chelder (215) 635-4397</p>
--	--

SPONSORED BY THE DELAWARE VALLEY REGION UNITED SYNAGOGUE OF AMERICA

כסטיבל הזמר החסידי

Celebration



american & european children's clothing... for infants through pre-teens

356 montgomery avenue
merion, pennsylvania 19066

"celebration" invites you to join them at a trunk show of the Spring and Summer collection from David Charles of London Beautiful dresses for beautiful occasions sizes 7 through pre-teen

Sunday afternoon One to five o'clock November sixth

dresses can be ordered in the style and fabric of your choice

Women Rabbis —

(Continued from Page 1)
the Conservative movement. He said "the essence" of the movement is "reverence for pluralism" and for "unlimited freedom of expression and academic freedom," with the only limit being the rulings of the RA Committee on Jewish Law and Standards.

Kelman also told the JTA that in the past 40 years, more than 500 rabbis trained in Orthodox and Reform seminaries had applied for admission to the RA and that more than 400 had been accepted while, in that same period, fewer than five rabbis have resigned from the RA on ideological ground.

Kelman, who attended the meeting last week, confirmed Cohen's description of the debate as "full of debate" but not rancorous. Kelman commented that a lot of anger had been expressed prior to the debate by Conservative foes of ordination of women. He also said he doubted that the vote would affect Conservative relationships with the Orthodox movement, which has never accepted either Conservative or Reform Judaism as valid.

Women Rabbis: The Orthodox Point Of View

Rabbi Gilbert Klaperman, president of the Rabbinical Council of America, the largest Orthodox rabbinic group in the world, said last week, "The Rabbinical Council of America deplores the action taken by the faculty of the Jewish Theological Seminary sanctioning the admission of women to their rabbinical program. The ordination of women is against Jewish law and tradition. By making this decision, the Jewish Theological Seminary and the Conservative movement have taken another step away from normative Judaism and are further polarizing Jewish life."

"This decision, violating Jewish law, further reveals that Conservative

Judaism's claim of commitment to the inviolability of Jewish law is untrue and misleading. We see in this latest policy pronouncement another movement by Conservative Judaism towards Reform."

"We are especially remorseful that such a serious decision was arrived at by a vote of faculty members of the institution, many of whom are not rabbis and skilled in Jewish law, and some of whom are not even religious in their practice. Jewish law is not determined by popularity votes or social cosmetics, but by the guidelines of Torah, and the classic decisions of Jewish law," said Rabbi Gilbert Klaperman.

Opponents Say Move Defies Halacha

A group of Conservative Jews opposed to ordination of women, called the Union for Traditional Conservative

Judaism, headed by Rabbi David Novak of Bayswater, Long Island, said the decision "defies all norms of Jewish jurisprudence." Kelman said the group was organized last spring and has about 500 members, rabbinical and lay.

The first reaction from Or-

thodox sources came from the Rabbinical Council of America, one of the major Orthodox rabbinical organizations. Rabbi Gilbert Klaperman, president of the Rabbinical Council asserted that "the ordination of women is against Jewish law and tradition." He stressed that the Conservative movement had "taken another step away from normative Judaism and is further polarizing Jewish life."

Jewish Feminist Group Hails Decision

Ezrat Nashim, which describes itself as the first Jewish feminist organization, issued a statement asserting that in March, 1972, it had called on the Conservative movement to ordain women as rabbis. The organization, made up of women seeking greater equality in Judaism with the framework of *halacha* (Jewish law) said the vote "recognizes the compelling moral claim of women's equality as well as the changed status of women in the modern world," and was "consonant with the Conservative interpretation of the development of *halacha*."

Background Of The Struggle

Formal action for the proposal began in the movement when the RA, in May, 1977, called on the JTS to consider admission of women to the Rabbinical School. In a resolution adopted at the RA convention in that month, the rabbis called on Cohen to set up an "interdisciplinary" commission to study "all aspects" of the issue. In November, 1977, Cohen announced formation of the commission.

The commission held meetings in December, 1977 and March 1978 and held a number of hearings in

various cities. In December, 1978, commission members evaluated their findings and authorized a final report, presented to the 1979 RA convention by Cohen. The report found no *halachic* barrier to ordination of women and proposed that the JTS admit women to its Rabbinical School.

The 1979 convention approved the commission report, but withheld action pending study of the views of the JTS faculty. At a faculty meeting, the Faculty Senate tabled the proposal, partly out of fear of a division within the movement and partly to allow friends and foes of the proposal more time to study it.

The next public action took place at the RA convention last spring when the RA admissions committee reported that a woman, Rabbi Beverly Magidson, ordained as a Reform rabbi, had applied for membership in the RA. Established procedure required that a majority of 75 percent of the delegates present approve Magidson's admission. On the final count, she fell short, by four votes, to get that majority.

A number of delegates, who opposed Magidson's admission to the RA, said that ordination was a matter for the JTS to decide and renewed their appeal to the JTS to decide on the issue. The meeting of the Faculty Senate last week was called by Cohen in response to that plea at the 1983 convention.

Roffe Has Never Looked Better

Winter-fun fashions are our specialty. We'll outfit you beautifully for your winter resort vacation and we'll make sure that those winter chills pass you right by.

Roffe
SKIWEAR

wick's
Ski and Sport

WILMINGTON • 1201 PHILADELPHIA PIKE • (302) 798-1818
NEWARK • NEWARK SHOPPING CENTER • (302) 737-2521



Don't
Hesitate
To Call

Your
Fuller Brush Man,

Tom Seidel
798-1770



JCC PRESENTS

FIRST TIME FROM WILMINGTON AIRPORT!

(FREE PARKING)

GRAND BAHAMA JAN. 9-13, 1984 \$279.00

INCLUDES: Roundtrip jet air transportation, airport/hotel transfers, accommodations at the BAHAMAS PRINCESS HOTEL, baggage handling, all taxes, tips & service charges. Not included: Departure taxes of \$8.00 & energy chg. of \$4.00

SPONSORED BY THE JEWISH COMMUNITY CENTER
CONTACT THE CENTER OFFICE FOR FREE BROCHURE

CALL (302) 478-5660

BAR MITZVAH

GALA

November 12

per Person

9:00 P.M.

Call for ticket information

Celebrating the JCC Building's Bar Mitzvah Year

Chairman Joan Bour and the rest of the Gala Committee are more than enthusiastic about the evening. "I think it offers an omnibus of activities, something for everybody, be they young or old or in-between. It's an evening that has been catered to everybody's taste. We're puttin' on the ritz for you!"

Dancing

Music will be provided by the Ira Berk Orchestra of Philadelphia, of the Eddie Davis Band. Says Joan Bour, chairman of the Gala, "They are fabulous! if everybody doesn't get up dancing it will be because their legs don't work!"

Musical Revue

Performed by members of the Center, the musical revue will portray in song and skit the history of the Center. Come reminisce with us as we trace the various events of the Center's past, as well as the particular aspects of today's Center.

Piano Bar

Rest your feet after dancing, in the quiet of our piano bar, where you can listen to pianist Jan Spencer and watch a continuous slide show of Center faces and past events. Escape for an intimate conversation and a drink, and make a request to hear one of your favorite melodies.

The Comedy Works

Two comedians, in two separate shows at 9:30 and 10:30 p.m., should provide enough hilarious entertainment to suit everyone. Comedians Bill Keller and Sam Greenfield will make clever observations about life and politics that will make us laugh at ourselves.

Hillary's Ice Cream Parlor

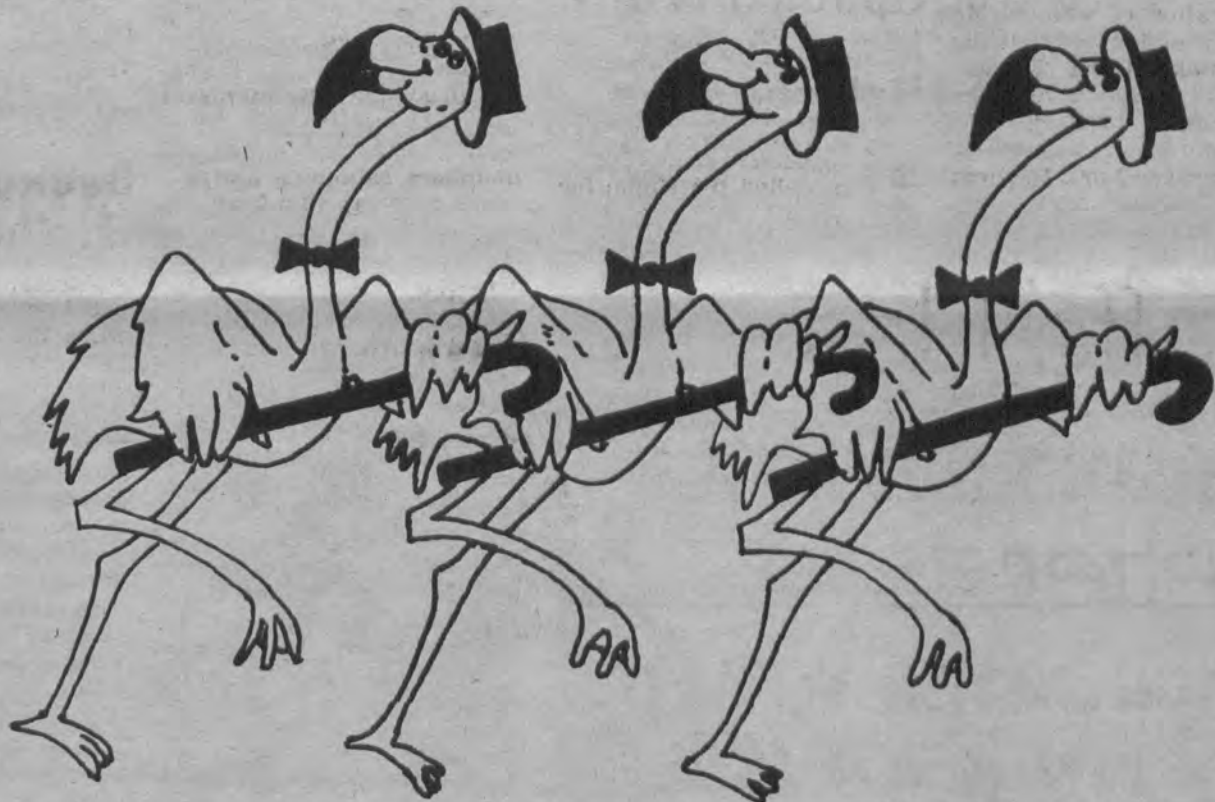
If one is familiar with Hillary's of Philadelphia, this doesn't need explanation, just anticipation!

The renowned ice cream parlor will cater our dessert, bringing a full assortment of pure and natural homemade ice cream, plus a wide variety of toppings to tantalize your palate.

Special Extra Attractions

Guaranteed to please the crowd, mime Dave Sadaah will also juggle and unicycle throughout the evening. And, be careful to whom you talk—rumor has it that there may be a few human mannequins amongst the guests!

The Champagne Supper for patrons will begin at 7 p.m. Patron tickets may be purchased for \$100 to \$150 by calling the Center at 478-5660.



Women And The Law

Of particular interest to women in this changing world is a knowledge of those aspects of the law which apply to them. To this end, the Jewish Community Center, the Delaware Commission for Women, and Delaware Trust are co-sponsoring two days of workshops entitled "What Every Woman Should Know About the Law" on Tuesday and Wednesday, Dec. 6 and 7.

Held at the Jewish Community Center, the workshops will commence at 7:30 p.m. on Tuesday, Dec. 6 with opening remarks by Rory Colton Godowsky, attorney at law and chair of the Delaware Law Workshop. Following this will be workshops dealing with employment and labor, finance.

Workshop II will begin at 9 a.m. on Wednesday, Dec. 7, and participants

will address such topics as marriage, divorce, children, finance, and employment and labor and the particular laws which apply to each. Lunch will be provided, at which time the keynote speaker, the Honorable Peggy L. Ableman, of the Family Court of Delaware, will speak on the changing role of women and the law. The days workshops will conclude at

approximately 2:45 p.m. with closing remarks by Rory Colton Godowsky.

Participants may attend either one, or both, of the workshop days. Workshop I, on Tuesday, costs \$5, and Workshop II, on Wednesday, costs \$11. Those interested should call the Jewish Community Center at 478-5660 to register. Further information is available upon request.

Freeport Fling Vacation Trip

Join the Jewish Community Center for five days in the sun of Freeport, Grand Bahama Island, the "Country Club Island." The "Freeport Fling" vacation, from Monday, Jan. 9 to Friday, Jan. 13, includes hotel accommodations at the Bahamas Princess, round-trip non-stop transportation from the Wilmington Airport (free parking will be provided),

round-trip hotel/airport transfers, baggage handling, hotel taxes, service charges, and tips to maids and porters, all for the special low price of \$279. per person, based on a double occupancy. Not included is a \$5 Bahamas departure tax and a \$3 U.S. departure tax.

Enjoy the natural beauty of miles of beach, the glamour and excitement of

Freeport's many nightspots and casinos, as well as the leisure activities of golfing, diving, tennis, and fishing. Shop in the "City within a City," the International Bazaar, browse along its winding streets where shops and boutiques offer a cornucopia of wares, foods and fashions from the far corners of the world.

There are a limited number of reservations available, so call the Center now at 478-5660 to reserve a spot. A \$25 deposit will hold your place. Call the JCC for information for single supplement, and a special children's rate. Upon your request, you will be sent additional information and a brochure.

Frankly Speaking —

(Continued from Page 3)

pulsive gambling "because it needs to be reactivated."

Rabbi Cohen reported that the director of the Federation of Jewish Philanthropics, Rabbi Isaac Tranis, believes a lot of Jewish compulsive gamblers are "hiding out there and it's time for the community to face the problem."

To this, Rabbi Cohen added with firmness,

"I heartily agree!"

Rabbi Cohen went on to say!

"With Atlantic City and its casinos an easy bus ride away from our city, we in Wilmington should be particularly sensitive to it."

The rabbi then noted an article that appeared recently in the *Jewish Voice* that I

Israel Issues —

(Continued from Page 3)

is hardly surprising that the Israeli consumer took advantage of the opportunity given to him by Menachem Begin.

The Begin years saw the Sephardic majority come into its own politically. The various labor governments, in order to achieve their vision of a homogeneous secular state, worked consciously and unconsciously to undermine the culture and values of the North African and Yemenite Jews. Begin meanwhile built a following in the urban slums and development towns by attacking the Labor alignment's elitism and praising traditional values and ethnic pride. It took the Likud victory of 1977 to make the Ashkenazi elite realize that the balance of political power had shifted to the Sephardim.

In material terms, the Sephardim have not since

1977 made significant gains relative to the Ashkenazim. What Begin has done is given them a feeling of belonging; "the government is with us."

It is now accepted that Israel's political, social and cultural base is a diversified one: Never again will the Sephardim be forced to ape the dominant culture and accept second-class status.

One should not review the Begin years without discussing trends in Israeli-Arab relations. The Labor alignment for years assumed that building a model state and talking peace would bring our enemies around. Jabotinsky and Begin on the other hand saw the Arabs as tough, resourceful foes, to be respected but dealt with firmly. Whether this attitude brough Egypt to the peace table is a matter of question: whether it will bring others around remains to be seen.

wrote about the time in the 1920s when Jewish leaders vowed to have benefit bazaars from which gambling was absolutely banned and how the general community leaders of Wilmington praised the Jews for their strong anti-gambling stand. Rabbi Cohen then went on to say,

"We have the chance today to show who we are and what we stand for, by bucking the prevailing gambling trends and saying 'No'. No — we will not tolerate excessive drinking because it is morally offensive, because it is dangerous to ourselves and to

others. Because it is not Jewish!

"No. We will not encourage gambling in our community, especially those forms of gambling that are easily liable to be abused. We say 'No' because we know what terrible ruin awaits those who fall under gambling's sway. We say 'No' because for centuries, Jewish moral teachers have pleaded with us to forsake this seductive vice and spare ourselves, our families and our communities untold anguish and pain. Because we are Jews and because we are compassionate beings."

I know some victims of compulsive gambling who,

had they been in Beth Shalom when Rabbi Cohen thundered out those words, would have stood up and shouted back "Hallelujah! Right on, rabbi!"

And if perchance, you may not believe that compulsive gambling has a terrifying effect upon human lives and families, then get invited to a meeting of Gamblers Anonymous and listen to the pathetic confessions of these victims of that disease.

Rabbi Cohen deserves our gratitude for having devoted some time in his Rosh Hashanah sermon to at least two problems facing so many of us these days.

Other Hand —

(Continued from Page 3)

parent redundancy? "The use of the words *within the city*," says Ibn Ezra, "implies that they fear the Lord in public". He compares this with Jeremiah's exhortation, "run ye to and fro through the streets of Jerusalem."

Nehama Leibowitz, in her *Studies in Bereshit*, draws the full impact of Ibn Ezra's terse comment: "In other words, the few can turn the scales and save the place, if the righteous individuals concerned are 'within the city,' playing a prominent part in public life and exerting their influence in its many fields of activity. But if they merely exist, living in retirement and never venturing forth but pursuing their pious conduct unseen and unknown, they will, perhaps, save themselves, but will certainly not possess the spiritual merit capable of protecting the city. The same city which forces the righteous few into retirement so that their scrupulous moral standards should not interfere with the injustice dominating public life, that same city is not entitled to claim salvation by virtue of the handful of righteous men leading a secluded life within it. Sodom could not boast of 50, 40, 30, or even 10 righteous men, and if they existed, at any rate, they were not 'within the city'."

This, then, is yet another of the many sources in our tradition that call for activism, for volunteerism, for involvement in the problems and the needs of the cities and communities in which we live. It is not enough, the Torah tells

us, to know what is wrong, to discuss the "obvious" solutions with friends in our living rooms. It is not enough to be righteous, or, as is more often the case, self-righteous. We save the city, and perhaps ourselves, only if we practice what is right "within the city." We all yearn to be left alone, to be free of the ringing telephone on the other end of which is another request for money or time or effort, another fundraiser, another

committee. But private goodness is a hollow thing.

We know the answer to the question with which I began. There were *no* groups of people seeking the public good in Sodom and Gomorrah. There were not even 10 righteous ones in Sodom, within the city.

We hear that our cities are being destroyed. Is it, perhaps, because there are not enough good and decent people "within the city?"

Milton Kutz —

(Continued from Page 1)

It didn't take long for Mr. Kutz to become involved in the Jewish community of Wilmington. He was elected president of the Jewish Federation in 1939, a post he held for 10 years.

Also in 1949, he was elected to the board of directors of the National Conference of Christians and Jews, having been one of the founders of Wilmington Round Table. He was also selected by the Avoda Club of Wilmington as "Mr. Community" in 1950.

Soon after he died, it was announced that he had provided in his will for many liberal bequests to a variety of Jewish and non-Jewish agencies and for the establishment of an educational foundation to be administered on an inter-denominational basis.

One of his bequests was for \$100,000 to assist the Y.M. and Y.W.H.A., erect a new building which is now the Jewish Community Center near Talleyville. He also

made a \$25,000 provision for a Milton and Hattie Kutz (his wife) Assistance Fund for making interest free loans to worthy needy families.

Other contributions were for the Hebrew University in Israel, the Brandeis University in Massachusetts, the Children's Bureau of Delaware, the Ladies Bichor Cholem Mosher Zekenim Society of Wilmington which operated a home for aged Jewish couples then on West Street, near Second.

And of course, the already wonderful Milton and Hattie Kutz Home on River Road perpetuated the names of this most wonderful and remarkable couple of our community. It is a fitting place to honor the 100th birthday anniversary of Milton Kutz next week.

**Patronize
Our
Advertisers**

MODERN KOSHER

(302) 475-9300

**WE CATER TO ALL
YOUR SOCIAL
OCCASIONS!**

BAR/BAT MITZVAHS WEDDINGS
GRADUATIONS PARTIES

AT SYNAGOGUE AND AT HOME

LET US CATER
YOUR THANKSGIVING
DINNER WITH
ALL THE TRIMMINGS

Elegante-Catering

HOWARD AND SHARON COHEN

(302) 475-9300 (302) 475-5300

1708 NAAMANS RD. WILMINGTON, DEL.

Bob Weiner

Jewish Folk Singer
& Guitarist
Available for
Weddings, Bar Mitzvahs,
Meetings, Etc.
Hebrew
Jewish
Hassidic
American Folk Music
762-1029

HARRY DAVID ZUTZ

Insurance Exclusively at 300
Delaware Avenue. Underwriting
Facilities for: Fire Casualty, Auto,
Marine, Surety Bonds.

Specialists for unusual risks.

658-8000

שמעון אומר

'Simon Says'
By
Simon Steinberg



למדו עברית

Learn Hebrew

- What else? מה עוד?
- Marinated herring דג מלוח פבוש.
- And for the lady? ולגברת?
- I want eggs. אני רוצה ביצים.
- A fried egg, Sir? ביצה, אדוני?
- No, please give me scrambled eggs. לא, תן לי, בבקשה, חבטה.
- One egg or two? ביצה אחת או שתים?
- Two, please. שתים בבקשה.
- And for the lady? ולגברת?
- I want a medium boiled egg. אני רוצה ביצה רכה.
- O.K. יפה.
- Waiter, please give me a knife and fork. מלצר, תן לי, בבקשה סכין ומזלג.
- And where is the salt? ואיפה המלח?
- Here is salt and pepper. הנה מלח ופלפל.

JCRC Reviews A Review

Who would believe that talented British short story writer Roald Dahl (Kiss, Kiss, etc.) was a closet anti-Semite who has finally come out? According to the Oct. 31 *New Republic*, Dahl recently wrote a review of *God Cried* - a pro-Palestinian photo book about the 1982 Lebanese war. Dahl's comments read particularly vicious:

"Is the American president and the Senate and the Congress so utterly dominated by the great Jewish financial institutions over there that they dare not defy them? And what, pray, do those powerful American Jewish bankers think about the murdering of 25,000 people in one month?"

And:
"Mr. Begin and Mr. Sharon are almost the exact carbon copies in miniature of Mr. Hitler and Mr. Goering. They are equally short-sighted and no less bloodthirsty."

"We had the Nuremberg Trials after the Hitler war. It is tragic and ironic that now, only thirty-seven years later, Begin and Sharon and a

number of other Israeli leaders should themselves be qualifying for the same treatment. Try them all, I say."

Finally:

"And yet, is it not rather wonderful that the German nation, once so hated, has today succeeded in rehabilitating itself and becoming anti-Nazi. Now is the time for the Jews of the world to follow the example of the Germans and become anti-Israeli. But do they have the conscience? And do they, I wonder, have the guts? Or must Israel, like Germany, be brought to her knees before she learns how to behave in this world?"

All of the expected ingredients are here: the shadowy and sinister international bankers (no games please) the twisted parallels (Nazi-type Israelis) and all of the other sick, irrational responses unencumbered by fact or even the laws of gravity.

Dahl is not important, but the disease he apparently



Irving Levitt

carries is infectious and completely immune from the healing effects of reason.

Like most anti-Semites, the carrier has prospered in comparative obscurity. His short stories grace the pages of *The New Yorker*, and *Esquire*, he writes children's books, he is a family man, is loyal to his country, has served in the armed forces, adores pets and he (secretly up to now) has an aversion to Jews which borders on barely repressed hysteria.

Peeked into any local closets lately?

Stock Exchange—

(Continued from Page 1)

September compared to 628 flats in August.

Building contractors are complaining of a credit shortage. Most importers have stopped releasing goods from customs because of credit difficulties.

The demand for electrical appliances dropped off sharply after their price increased by 30 percent following devaluation. A 30-40 percent drop was reported in orders for new cars. Restaurants, entertainment establishments and book stores reported a sharp decline in business.

Join Hadassah

Some of man's greatest achievers have been women. I wish to join Hadassah. Annual membership \$15 ; Life Membership \$175

Name.....
Address.....
City..... State..... Zip.....

Make check payable to: Hadassah, c/o Linda Harwitz, 3401 S. Rockfield Dr., Wilm., DE 19810

FRANK KESSELMAN, CLU
OCCIDENTAL LIFE
575-1100

ONE ROLLINS PLAZA
WILMINGTON, DEL.



VA-AD HAKASHRUTH OF WILMINGTON

The following commercial establishments are under our *Kashruth* supervision:

MODERN KOSHER MEAT MARKET & CATERING
GAMIEL CATERERS

GOLDBERG BROTHERS WHOLESALE MEATS
BAGELS & DONUTS

bagels, rolls, challah, bread, cinnamon buns and danish

BRANDYWINE PASTRY SHOP

bagels, rolls, challah, bread, cookies and cake - *pareve*

doughnuts, cookies, cheese danish - *milchig*

The following Jewish institutions are under our *Kashruth* supervision:

J.C.C. SENIOR KITCHEN & PRESCHOOL
KUTZ HOME

Rabbi L.B. Gewirtz - Rav Hamaashir
Jack Goldstein - Mashgiach
Morris Ashkanasi - Chairman

Place Your Confidence In The Ring Leaders

HANUKKAH SPECIALS



LADIES' 14K GOLD & DIAMOND ROPE DESIGN INITIAL RING

REGULAR PRICE \$120.00

SALE PRICE \$60.00

(Allow 2 Weeks For Delivery)

SAVE UP TO 50% ON GOLD BEADS AND SEMI PRECIOUS STONE BRACELETS. WE WILL MAKE ANY COLOR COMBINATION

PRICES START AT \$16.98

14K YELLOW GOLD SCRIPT NAME AND SOLID ROPE BRACELET

REGULAR PRICE \$400.00

SALE PRICE \$240.00

(Allow 2 Weeks For Delivery)

Branmar Plaza
MARSH & SILVERSIDE RDS.
OPEN MON.-SAT. 10-9
475-3101

4377 Kirkwood Plaza
OPEN MON.-SAT. 10-9:30
999-9901

Visit Our New Location
824 MARKET STREET
ON THE MALL
655-6235

Jewish Historical Society Of Delaware - Gratz Says 'Chai' To 18 Students

A Treasure-Trove Of Memorabilia

By GEORGE SHTOFMAN

What do you know about the status of Jews in Delaware during the Colonial days? Who was the first Jewish office holder in the State of Delaware? What prominent member of the Jewish community was responsible for Wilmington's slogan, "The First City of the First State?"

Do you know when the Moses Montefiore Society was founded and when the first synagogue was formed here? Do you remember when Second Street was the center of Jewish marketing, especially on Saturday nights? Do you recall the old Y.M.H.A. when it was located at Third and King Streets and also the Avoda Club?

Memorabilia of these events are well documented and preserved through the patience and efforts of the Jewish Historical Society of Delaware, representing the achievement of a goal of Rabbi David Geffen, then of Temple Beth Shalom, upon its formation nine years ago.

For two years prior to its organization, Rabbi Geffen worked for the formation of Jewish Historical Society, dedicated to research and Jewish history in the State of Delaware dating back some 320 years.

Rabbi Geffen's dream of a Jewish Historical Society in Delaware was realized late in 1974 when Judge Charles K. Keil of the Family Court became its first president and Rabbi Geffen a vice-president.

Since Judge Keil's presidency, others who have headed the organization are: William P. Frank, Lillian Robertson, Dr. Ralph Tomases, Helen Goldberg and Jacquelin Rofel, the present presiding officer.

The Jewish Historical Society of Delaware, a constituent agency of the Jewish Federation of Delaware, occupies space in the quarters of the Historical Society of Delaware at 505 Market Street. There are two tables, shelves and over 100 boxes of

manuscripts, books, pictures, documents, clothing, tools, old family records, synagogue and organization papers, letters, etc.

All of this material is very carefully documented and handled by Myrtle E. Kurland, archivist of the Jewish Historical Society of Delaware.

An idea of some of the materials which Mrs. Kurland has on hand for the Jewish Historical Society of Delaware are two hand made carpenter planes made by Max Paikin in London and brought to Wilmington in 1910; the famous "Dear Mollye" letters, representing correspondence by Mollye Sklut with Jewish servicemen from this area during World War II; Temple Beth Shalom records dating back to 1922; Jewish Welfare Society records dating back to 1934; a large ledger type book containing a history in Yiddish of Machzikey Hadas, and many, many others of extreme interest.

Those desiring to inspect and view any of the Jewish material at the Historical Society of Delaware between Mondays and Fridays can arrange for a definite time by contacting Myrtle Kurland at her home number, 764-2282.

Over the years since its organization, officials of the Jewish Historical Society of Delaware have cooperated in the direction of gathering together any and all material that can be of value as far as the history of the Delaware Jewish community is concerned.

Yetta Chaiken has been interviewing many of the older residents regarding their recollections of the Jewish community and has quite a large number of cassettes revealing interesting and delightful insights as to incidents and experiences of bygone years.

Several members of the community have contributed to the history of Jewish background of the State, in-

cluding Emile V. Topkis, a thorough researcher who has turned over all his notes to the Society; the late Harry Bluestone, formerly director of the Jewish Community Center who wrote several important historical booklets about various Jewish organizations; Rabbi Elihu Schagrin, formerly of Wilmington, who authored a three-volume Delaware history published in 1947, and others.

Some "Old Timers" may not have even heard of some Jewish groups, such as: Ohabe Shalom Synagogue, Ahavath Schim Synagogue, Hebrew Library Association, Kallah, and William Topkis Benevolent Society.

From a personal point of view, an interesting experience was to see a picture postcard of the Centennial of Delaware Jewry showing three Market Street stores,

including that of Sample Clothing Co. at 726 Market Street, which was owned by the writer's father, the late Morris Shtofman, who opened it in 1914, and the adjoining tobacco store of the late Charles K. Breuer, who was the father of Mrs. Samuel Shames.

Undoubtedly, large numbers of historical material are stored away in the attics of many Jewish homes here. It would really be a *mitzvah* to collect these items and make them available to the Jewish Historical Society of Delaware.

The purpose and work of the Jewish Historical Society of Delaware can be furthered only through the cooperation of those in the community who can furnish more historical material to this enterprising organization.

Delaware Gratz Hebrew High School is very pleased to announce that 18 new students have enrolled in our first year program. These students come to us from the fifth year Hebrew classes of Adas Kodesch Shel Emeth, Beth Emeth, Beth Shalom and Beth El of Newark. They meet three times weekly and study a wide range of Judaic studies in both Hebrew and English. They also participate in many extra-curricular and social activities. Members of this year's prozdor class are: Andy Arenson, Jamie Blau, Elizabeth Burkin, Johanna Goldlust, Shana Hart, Teddy Klein, Jeffrey Labowitz, Lauren Lovett, Michael Mand, Lynne Miller, Phillip Nathanson, Beth Panitz, Neil Pollack, Vered Reuben, Aaron Shapiro, Meredith Tucker, Stephanie Wohlman, and Hope Zucker.

Kutz Home Auxiliary Hanukkah Bazaar

The public is cordially invited to the annual Kutz Home Auxiliary Hanukkah bazaar to be held at the Home on Sunday, Nov. 20 from 1 to 4 p.m. This year's bazaar features Resident-made arts and crafts, fresh baked goods and a raffle. The grand prize to be raffled off is a Magnavox video recorder. Other valuable prizes to be raffled include tickets to the Encore Dinner Theatre, Three Little Bakers (Pike Creek), Candlelight Music Dinner Theatre and tickets - supplied by B & B Tickettown - to an upcoming sporting event. Delicious refreshments will be served and admission is free. Veronica, the fortune teller, will also be available to read

palms and look into the future.

"Residents are especially proud of their handmade items which go on sale at the Hanukkah bazaar," according to Ida Goldstein, bazaar chairwoman. Assisting her are co-chairwomen, Mutzie Bellak and Helen Goldberg. Alma and Sam Handelman are organizing the bake sale and Bert Tenner will chair the telephone committee.

All proceeds from the Hanukkah bazaar go directly toward purchase of supplies for the social and recrea-

tional activities program of the Home.

Please contact the Home if you have any questions about the Hanukkah bazaar. Baked items for the bake sale will be welcome. Also, if you did not receive raffle tickets, please call the Home at 764-7000.

**Support
Our
Advertisers**

WE GIVE TO LIFE

We transfer your Super 8 & 8mm Movies to Video!

\$39.95 1st/hour
2nd hour even less

VHS or Beta
tape included

O.K. VIDEO

David C. Klein
President

406 Philadelphia Pike
762-2333

EXCLUSIVE ** ELEGANT
KOSHER CATERING
BY

FRED GAMIEL

HOME and SYNAGOGUE
Also Available Banquet Rooms
for 800 Persons - Free Parking

CALL FRED or MARK
655-2748 or 475-8317

Albert Einstein Academy To Hold Open House

By JUDITH GOLDBAUM,
Headmaster

If you have never visited Albert Einstein Academy to become personally acquainted with our facilities and curriculum, we are offering you that opportunity now. For the entire week of Nov. 14 through Nov. 18 from 9 a.m. to 5 p.m. the community is

welcome to drop in, visit classes, talk with the staff, parents, and myself.

It's not too early to start looking at schools for the 1984-85 school year. Our school educates children in grades kindergarten through sixth.

For further information, please feel free to call the school office at 478-5026.

NORFOLK
YORK

JACOBS
Better By Degree

SINCE 1937

118 SOUTH MARKET STREET
(302) 658-6503

New Accounts
Welcome

- Senior
Citizen Discount

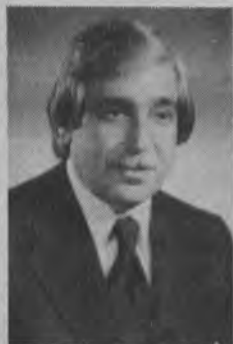
FEATURING FUEL AD-
DITIVE FOR 2 IN OUR OIL



**Jewish Family Service
of Delaware**
Jewish Family Service is a constituent agency of the Jewish Federation of Delaware and a member agency of the United Way of Delaware.

You And Your Aging Parents

By Arnold Lieberman,
Executive Director



Planning for an elderly parent has become a major concern to many families in our community and throughout the country. When an elderly person becomes widowed, ill, or for whatever reason cannot remain in their usual living arrangement, families are frequently faced with some very difficult decisions.

The ramifications of moving someone away from familiar surroundings; differences between siblings over which plan would be best; deciding the effect that moving an elderly parent into one's home would have on a spouse and children; and simply seeing your parent become old and feeble are just some of the difficulties such a decision may create.

Over the past few years, more and more people facing such decisions, have turned to Jewish Family Service for help. These situations, as so many others in life today, do not really come down to what is right or wrong, good or bad. It is rather a question of analyzing each situation; becoming aware of what options exist; and examining the options in terms of which

seems most appropriate overall.

The professional staff of Jewish Family Service can be helpful in different ways. We have developed a rather extensive file of resources in terms of what exists and the details of each resource. We can therefore help people to at least know what options are available.

In the process of working through such situations, it is not unusual that long-suppressed feelings within and between family members resurface. We can help to understand and deal with such feelings, so they do not affect the decisions to be made. We can also help people to deal with the process of change that occurs in such situations.

Our staff can provide counseling services directly and also explain and put clients in contact with other needed services such as home-care services, adult day-care, nursing homes, or several other services that may be helpful in such situations.

These situations will occur even more frequently in the future, and in cases where difficulty arises, help is available through Jewish Family Service. Call us at 478-9411 and we will help.



Dear Rachel

Dear Rachel,

My son will be bar mitzvah in a few months (maybe). Only the parent of a teenager will understand what life is like in my house now. He says he doesn't want to go to lessons or religious school, and for good measure that he doesn't particularly want to be Jewish either. To him, being Jewish is "stupid," "dumb," "a waste of time," and "for nerds." We can hardly sit down to dinner without a fight. I'm at my wits end. After all, it is not just a family matter if he refuses to be bar mitzvah. There is the family, our friends, the caterer, the photographer, the band to consider. What should I do? I can't have him back off at the last minute. Please suggest something, because teenage rebellion or not, I'm going crazy.

Miserable Mom

Dear Rachel,

I saw Mom's letter and she said I could write too. I don't give a damn about being bar mitzvah or being Jewish, so why can't she just leave me alone? I dare you to print this letter!

Honest Kid

Dear Mom and Kid,

Very few people mean it literally when they say that they reject a whole religion or piece of their identity. Usually it is something specific or somebody specific who is making them uncomfortable. Try to figure out what it is that is bothering you, Son. And Mother, before you drive yourself and your son crazy, I suggest that you bring in a third, neutral party to help you sort out your needs and feelings. I suggest a counselor or rabbi, who can understand the demands being made on the whole family by this bar mitzvah.

Rachel

Send letters to "Rachel, c/o Jewish Family Service, 101 Garden of Eden Rd., Wilmington, DE 19803." Names and details will be altered in published letters to protect your privacy.

'Through The Looking Glass: Dating, Interdating And The Jewish Single'

Are you a single Jewish man or woman? Then you certainly understand what it is to experience the pleasures and hardships of the dating scene. The Jewish Family Service would like to offer you an opportunity to participate in a three-evening series to explore personal issues which arise while dating in a world where most people you are likely to meet are non-Jewish. This group will be limited to five women and five men. This will make it possible to help participants

better understand the issues which keep Jewish women and men apart, and the commonalities that bring them together. We will also compare the pressures each gender faces in dating.

"Through the looking glass" is open to men and women 25-40 and is offered free of charge. The group will meet on Tuesday evenings beginning Nov. 29 at 7:30 p.m. and will be led by Bob Gluck of the JFS staff. To register, call the Jewish Family Service at 478-9411.

HENRY'S BICYCLE SHOP



OWNED AND OPERATED BY
JOSEPH HURSHMAN

RALEIGH • MOTOBECANE • VISTA • ROSS
2518 W. 4th St. 654-0361

Going to New York shopping or to Reading for bargains?



Call DOLLAR RENT-A-CAR
AT: 655-7117

For their Van Specials
With or Without Driver

DAVE ROSENBLATT
2100 Governor Printz Blvd.

SOCIETY HILL APARTMENTS OF DELAWARE

A Tradition of Excellence

Make Your Inspection By Appointment

798-8500

Sorry, No Pets

PREPARE FOR:

**COLLEGE BOARDS
SAT**



TEST PREPARATION
SPECIALISTS SINCE 1938

FOR INFORMATION CALL
737-1124

Winter Course To Be Held
In North Wilmington

The bank that people in Delaware Trust.



DELAWARE TRUST COMPANY, Member FDIC

the 'bank where people make the difference'

Obituaries

Marc David Eben

Marc David Eben, 23, of 67 Inlets Blvd. formerly of Twin Oaks, Wilmington Del., died Oct. 18 at Greenville Memorial Hospital, Greenville, S.C., from injuries he received in an auto accident Oct. 15 in Greenville.

Mr. Eben was a senior business administration major at Furman university in Greenville. He was a 1978 graduate of Brandywine High School.

He is survived by his parents, Kurt and Audrey Eben.

Funeral services were held Oct. 23 at Congregation Beth Emeth, 300 Lea Blvd. Interment was in Beth Emeth Memorial Park, Faulkland and Dupont Roads.

In memorial the family suggests contributions to Congregation Beth Emeth, 300 Lea Blvd. Wilmington, Del. 19802.

Funeral arrangements were made by the Schoenberg Memorial Chapel.

Mildred E. Brown

Mildred E. Brown, 87, of 1401 Pennsylvania Ave., died at her home Oct. 18 of an apparent heart attack.

Mrs. Brown worked as a lawyer in the General Accounting Office in Washington for 23 years, retiring in 1961.

She was a member of Temple Beth Shalom in Wilmington.

Her husband, Jacob, died in 1965. There are no immediate survivors.

Graveside services were held Oct. 20 in the Beth

Shalom Section of the Jewish Community Cemetery on Foulk Road.

Leon Emmett

Leon Emmett, 62, formerly of Wilmington, Del, who had lived at 2551 N.W. 41st Ave., Lauderhill, Fla. since 1981, died of cancer Oct. 20 at his home.

Mr. Emmett owned and operated Lee's Market at 727 Bennett St. in Wilmington for 28 years. He retired in 1981.

He is survived by his wife, Evelyn; a daughter, Harriett Trommer of Philadelphia; a brother, Jacob of Lauderhill; and two grandchildren.

Services and burial were held Oct. 23 in Lauderhill.

Instead of flowers, the family suggests contributions to Hospice Care of Broward County, 3725 N. Andrews Ave., Fort Lauderdale, Fla., 33309.

Albert Helfand

Albert Helfand, 72, of 1702 Washington Street, died Oct. 21 of a heart attack at the Delaware Division.

Mr. Helfand operated a taproom at Sixth and Shipley streets in Wilmington for many years, until 1973. He was a mechanic at Bell's Plumbing Supply Co. in Wilmington until four years ago. He was a member of the Adas Kodesch Shel Emeth Congregation, the Montefiore Mutual Benefit Society and Deborah, the organization that sponsors Deborah Heart and Lung Hospital, Browns Mills, N.J.

He is survived by his wife, Sarah; three sons, Barry H. of Potomac Md., Arnold R. of Westwood and Kenneth A. of Liftwood; two brothers, Barney of Rockville, Md. and Leon of Sun City, Ariz.; a

sister, Annie Neiberg of Chester, Pa., and five grandchildren.

Graveside services were held Oct. 23 in the Adas Kodesch Kodesch Shel Emeth section of the Jewish Community Cemetery on Foulk Road.

In memoriam the family suggests contributions to the Adas Kodesch Shel Emeth Congregation, Washington Blvd. and Torah Drive, Wilmington, Del. 19802 or to the Delaware Heart Association 4C Trolley Square, Wilmington, Del. 19806.

Funeral arrangements were made by the Schoenberg Memorial Chapel.

Dora Weiner

Dora Weiner, 82, of the Brandywine Hundred Apartments, 400 Foulk Road died of a heart attack Oct. 21 at the Crozier-Chester Medical Center, Upland, Pa.

Mrs. Weiner, who retired in 1958, had operated a grocery store with her husband Max at 20th and Jefferson streets for 30 years. He died in 1974.

She is survived by a son, Eugene J. of Wilmington; two sisters, Fannie Ivins and Betty Gassell, both of Springfield, Pa.; two grandchildren and a great-grandson.

Graveside services were held Oct. 23 at the Beth Shalom section of the Jewish Community Cemetery on Foulk Road.

In memoriam the family suggests contributions to the Barbara Weiner Memorial Fund, c/o Jewish Community Center, 101 Garden of Eden Road, Talleyville, Wilmington, Del. 19803.

Abraham Alvin J. Levine

Abraham Alvin J. Levine, 89, of Newton Center, Mass. formerly of Chateau Orleans, Wilmington, died Oct. 24 in the Beth Israel Hospital, Boston.

Mr. Levine had moved to Wilmington in 1974 from Newark, N.J., where he had owned and managed a jewelry store. He moved to Massachusetts several years ago.

Mr. Levine's wife, Tina Klinger Levine, died in 1975. He is survived by a daughter, Ruth Hoffstein Bronstein of Newton Center, and three grandchildren.

Graveside services were held Oct. 26 at the Workmen's Circle section of the Jewish Community Cemetery on Foulk Road.

Instead of flowers the family suggests contributions in his memory to the Kutz Home, 704 River Road, Wilmington 19809, or the Hebrew Rehabilitation Center for the Aged, 1200 Center St., Roslindale, Mass. 02131.

Julius Gordon

Julius Gordon, 86, of 223 S. E. 45th Terrace, Cape Coral, Fla. formerly of Wilmington,

Del., died of a heart attack Oct. 26 at Cape Coral Hospital.

Mr. Gordon retired in 1963 after 20 years as a guard at the United States Penitentiary in Atlanta. He then moved to Wilmington. He was a member of the Adas Kodesch Shel Emeth Congregation in Wilmington.

He is survived by his wife, Sadie T.; a son, Mendel T. of Shipley Heights, Wilmington; two sisters, Sophie Thaw of Miami, and Deenie Evelev of

Philadelphia, and three grandchildren.

Services were held Oct. 28 at the Schoenberg Memorial Chapel, 519 Philadelphia Pike.

Burial was in the Adas Kodesch Shel Emeth section of the Jewish Community Cemetery on Foulk Road.

Instead of flowers, the family suggests contributions to the Adas Kodesch Shel Emeth Congregation, Washington Boulevard and Torah Drive, Wilmington, Del., 19802.

Hillel At U of D —

(Continued from Page 7)
for sale. The Hillel students will have no facility for their use. No religious groups is permitted to use any University rooms or facilities. The students are quite concerned about their future.

Another concern of theirs is the fact that Rabbi Gluck, who is a rabbinical student at the Reconstructionist Rabbinical College in Philadelphia and has his student internship at the University, is only able to give part-time professional assistance. The students feel the need to have full-time staff to help them develop continual programs.

The students also stated there is no kosher dining facility in or nearby campus and, though only three or four students do keep kosher, they felt that if such facilities were available many more students would make use of it.

There are really four different Jewish student organizations on campus. There is Hillel, which is the focus of the Jewish community at the University, a place where Jewish students from

all over the campus can come together for educational, social and other Jewish activities and where friendships are formed and Jewish fulfillment may be realized; Friends of Israel, which promotes programs to Israel; the Alpha Epsilon Fraternity which is predominately a Jewish fraternity and provides and opportunity for students to enhance themselves both socially and academically; and the United Jewish Appeal University Campus Campaign, in which David and Dina are so involved.

The students feel that they want to participate more in the Jewish community of Delaware and would like the Jewish community of Delaware to be much more aware of them.

Modestly they stated that the future is in their hands. They need to grow, they stated, from strength to strength.

Jewish students need our concern and help, as they are our future: the next generation.

ELSMERE MARBLE & GRANITE CO.

Delaware's Oldest Monument Manufacturer

Authorized Rock Of Ages Dealer

Showroom — Offices — Plant



3206 LANCASTER AVENUE
WILMINGTON, DELAWARE 19805
TELEPHONE: 658-4846

Over 60 Years Of Local Reputable Service

Louis S. Zaret

Res. 478-6357

HAVE SERVED THE JEWISH
COMMUNITY SINCE 1953

Appts. Available



THE POT-POUR-RI

2117 Concord Pike
Wilmington, Delaware 19803

FINE GIFTS AND
ACCESSORY FURNITURE
Located in the Fairfax Shopping Center

(302) 652-2462

WE OFFER FREE GIFT WRAP AND WILL BE HAPPY TO SHIP FOR YOU

Schoenberg Memorial Chapels



In the hallowed tradition of
our faith....

a dignified setting with
reverence for customs
and observances in strict
accord with family wishes.

519 Philadelphia Pike
762-0334

Wilmington Hadassah

On Sunday, Nov. 13, the Wilmington Chapter of Hadassah will hold a new member brunch to support "Hello Hadassah Sunday." This special re-enrollment campaign is a nationwide effort to retain present members and bring in new members. Therefore, on this particular Sunday the local chapter has planned a brunch at the home of Serena Winer at 211 Churchill Drive in Carrcroft, which will begin at 11 a.m. All new or prospective members are invited to attend. By bringing a new member, present members will also be most welcome.

To make your reservation, call: Linda Harwitz - 478-3229; Zeldia Rich - 762-0437; Sandy Harad - 475-1193; or Serena Winer - 764-8117.

Recent accomplishments at the Hadassah-Hebrew University Medical Center in Jerusalem include: establishment of the connection between viral hepatitis B and liver cancer, performing plastic surgery on Down's syndrome children to improve their speech and appearance, and the first successful bone-marrow transplant to a thalassemic child from a father.

This is the 50th anniversary year of the Youth Aliyah movement, which today absorbs new immigrant youths from third world countries and the Iron Curtain. Its original purpose was to rescue children from the Holocaust.

"Some of man's greatest achievers have been women," according to the Hadassah membership ap-

peal. So, we wish that every re-enrolled member will bring in a new member. Nationally, we need more than our present 370,000 members to continue our work. So, please join us at our brunch on Nov. 13!

DISPEL THE MENOPAUSE MYTH

"The Menopause Myth" is the topic to be highlighted at the Nov. 14 meeting of the Wilmington Chapter of Hadassah's Sabra Group. It will begin at 12:15 p.m. and will take place at the Jewish Community Center.

For years women have thought that menopause was the end of their lives as active, sexual beings. Research is showing that physical and psychological problems thought to be related to menopause can be reduced or resolved completely. Come and hear about the most recent findings.

Our knowledgeable speaker, Nancy Engel, M.A., R.N., is a teaching professor at the University of Delaware School of Nursing. She will soon be receiving her Ph.D. in nursing with emphasis on menopause from New York University. This past summer Engel spent two months with the World Health Organization in Bangladesh.

Myrna Rubenstein, Sabra Group president, will officiate. Refreshments will be served by Lillian Binder, Sylvia Kessler, and their committee.

Bring your questions relating to menopause to this meeting. This is your opportunity to dispel all the myths of menopause.

Hillel And Temple Beth El Present: Hanukkah For Grownups

Is there more to Hanukkah than dreidels and latkes? Is Hanukkah "just for kids?" How can adults find a meaningful way to understand and celebrate this upcoming holiday? Waskow, noted author, speaker, professor and editor of *Menorah* will explore creative approaches to answer these questions. His warm yet challenging manner has brought him to the fore as a driving force behind the movement to renew Jewish life (as expressed in

havurot, the *Jewish Catalogs* and in the Reconstructionist movement). Many of you will know Waskow from his books, *Seasons of Our Joy*. His most recent book, *These Holy Sparks* was just released this fall.

"Hanukkah for Grownups" will be held on Sunday evening, Nov. 13 at 7 p.m. at Temple Beth El, 70 Amstel Avenue, Newark. The public is invited.

This has been an active year for Hillel. Events have included the traditional Sunday brunches and Shabbat dinners and a variety of special events from a bagel-making evening to a trip to Atlantic City. Our membership is at its highest in history and we are looking toward a year of more active student participation than ever before. We are pleased to continue our warm relationship with Temple Beth El by co-sponsoring the evening with Arthur Waskow.

The Mingles

The Mingles, a group of Jewish single people over age 45, will hold a wine and cheese party on Sunday, Nov. 13 at 8 p.m. Cold drinks, coffee and cake will also be served. The charge is \$2 per person. Interested singles are cordially invited to attend.

The party will be held in the home of Miriam Cohen, 2003 Dell Lane. Call 478-7190 evenings, or 654-6301 days, for information or directions.

Organizations in the News

Rabbi Jacob And Leah Kraft Lecture

Congregation Beth Shalom is pleased to announce that the 1983 Rabbi Jacob and Leah Kraft Lecture will be held in its main sanctuary on Sunday, Nov. 13 at 11 a.m. The guest speaker will be Rabbi Gustav Buchdahl, spiritual leader of Temple Emmanuel, Baltimore, Md. Rabbi Buchdahl, widely recognized for his innovative approaches to Judaism, will be offering a most unusual examination of modern Jewish history in his lecture, "Does Art Imitate Life? - 'Tootsie' and the Modern Jewish Experience." Rabbi Buchdahl will seek to demonstrate that like the out-of-work actor who adopted a female persona to get hired, modern Jews have adopted strange and sometimes bizarre roles and identities to be successful in the larger, secular world. While we have become expert in our assumed identities, we have forgotten who we truly are.

The lecture will be preceded by the morning minyan (9:15 a.m.) and breakfast (10 a.m.) sponsored by the Beth Shalom Men's Club. The public is cordially invited to attend.

New BESTY Advisors

BESTY is privileged to have as their new advisors Jeff Jablow and Mindy Kazin, two energetic, able young adults, both members of Congregation Beth Emeth. (BESTY, the Senior Youth Group of Congregation Beth Emeth, consists of about 25 active students, grades nine through 12. Jamin Halberstadt is the president.)

Jeff is the son of Dick and Pat Jablow, and he has been reared in an atmosphere of deed and creed. His parents have devoted love, time and talent to their family and to the young people of the Congregation, as well as to the Boy Scouts of America for the past 22 years.

This talented young man was a past president of BESTY, and Eagle Scout, an advisor to the Order of the ARROW, BASA; an active participant in the music department of Mt. Pleasant High School and in the drama department of the University of Delaware.

Presently Jablow is a teacher of drama and theater at Mt. Pleasant High School, and he teaches in the seventh, eighth, and ninth grades of the Beth Emeth Religious School.

Mindy Kazin, a native of Brooklyn, New York, is a

graduate of the University of Delaware. She, too, was reared in a family which participated in Jewish and community activities.

Kazin was a member of her local youth group and a member of the Long Island Federation of Temple Youth (LIFTY). After her graduation from the University of Delaware, she taught in the Wilmington area schools. She was a district executive of the Boy Scouts of America and is presently employed by the Chase Manhattan Bank of Delaware.

Dick and Pat Jablow remain advisors of the Beth Emeth Junior Group (seventh and eighth grades).

AKSE Men's Club

The Men's Club of Adas Kodesch Shel Emeth Congregation will hold its first kosher dinner of the New Year on Sunday, Nov. 13, at 5:30 p.m. in the social hall of the Congregation. "Summertime in November" is the theme for the evening. Included on the fixed menu are: tossed salad, leg or breast quarter of chicken oven baked in homemade bar-b-que sauce, mashed Idaho potatoes, sliced French bread, coffee, tea, ice water, and apple crisp. Donation for the adult portion is \$5.50; for the Child 12 and under, \$3.50. Reservations are a must and should be called in to the office at 762-2705 no later than Wednesday, Nov. 9. Make up a table of 10 and reserve your place for a *freilach* kosher evening cheaper than on the outside.

On the following Sunday, Nov. 20, 10 a.m. to 2 p.m., the Men's Club will provide a delicious lunch menu during Sisterhood's annual Hanukkah bazaar and gift shop sale. The menu will feature hot-dogs, Ruthann's sweet and sour meatball subs, drinks and superior sherbet dessert, all at very reasonable prices. Enjoy a foretaste of the Hanukkah season and pick up your Hanukkah gift and paper needs well before lighting the first candle on Wednesday evening, Nov. 30.

Beth Shalom Hanukkah Brunch And Bazaar

Beth Shalom Sisterhood will hold a pancake breakfast-brunch and Hanukkah bazaar on Sunday, Nov. 20 from 9 a.m. to 1 p.m. at Beth Shalom Congregation, 18th St. and Baynard Blvd.

Juice, pancakes, coffee, tea, and milk will be served

for \$1 per adult and \$1 for children.

The bazaar will include merchant tables, children's gift shop with free wrappings for each item the children select, bake sale, children's games, penny candies, and the Sisterhood gift shop with a superb line of gifts, wrapping paper, candles, decorations, dreidels, chocolate gelt, and cards.

Treat your family to a delicious pancake breakfast-brunch and shop for all those presents for holiday giving.

Call Elaine Morganstein, 478-8667 or Annette Kendis, 459-3640 for further information.

Beth Shalom Hanukkah Bazaar

The Sisterhood of Congregation Beth Shalom will sponsor the annual Hanukkah bazaar at the synagogue (Queen and Clara Streets, Dover) on Sunday, Nov. 13, from 10:30 a.m. to 2 p.m.

Saleable merchandise - plants, children's games, toys, books, used and new articles as well as items from the synagogue gift shop will be available. There will be free door prizes.

Lunch can be purchased from the snack bar.

Beth Emeth Sisterhood

F. Edmund Lynch, a director of a Wilmington law firm, will be the guest speaker at the Nov. 8 meeting of the Sisterhood of Temple Beth Emeth. Lynch, who is a fellow of the American College of Probate Counsel, will speak about "How to Manage your Financial Affairs." A petite luncheon will be served promptly at noon. Please call in reservations for luncheon and babysitting to Rae Goldenberg at 798-1929. On Nov. 15, at 7:30 p.m. at Temple Beth Emeth, Candy Stewart, the la crosse coach at Friends School of Wilmington, will speak about physical fitness, with audience participation for a group of Sisterhood members. Refreshments will be served and all are welcome.



Hard Work, Rewards And Relevant Studies Are Key Ingredients

"I don't think there is any better gift than giving a solid education to a child, which will outlast all the properties and the gifts and all the trips. I believe that education should be challenging so that a child feels he has learned something every day he attends a day school," says the enthusiastic new coordinator of Judaic studies at Albert Einstein Academy, Rabbi Mac Portal.

Rabbi Portal, who also holds the pulpit of Keshet Israel Congregation in West Chester, teaches fourth, fifth and sixth graders and is working on refining a Judaic program tailored to the needs of AEA children. He believes in giving his students lots of

work, rewards for effort and Hebrew studies relevant to their daily lives.

"I find the children very responsive. They just need challenge. I get them to do a lot of work. They love it. They're excited," said Rabbi Portal after his first few weeks of teaching. "I love children personally, and having been raised in a home of 10 children, five boys and five girls, (all the boys rabbis and all the girls married to rabbis), I got to appreciate the value of education."

A fervent proponent of Jewish day schools, Rabbi Portal was impressed when AEA students visited his congregation, and later eagerly joined the Einstein faculty. "What a delight it was to hear them lead the service. It was really like a *yontif*, like a holiday," remembers the Moroccan-born rabbi, who is the father of four teenagers who attend Jewish schools.

Pleased with the school and his new job, Rabbi Portal desires only a larger enrollment. He argues that children need a fine secular education side by side with strong Judaic studies to give them a sense of Jewish identity which won't be shaken later in life. "The investment is well worth it. It pays very shortly, and dividends come out in the children's children," he said. "Just to be in this *ruach*, this atmosphere, will do a lot."

Rabbi Portal is introducing Jewish values and ethics to his students, along with their Hebrew language and liturgy studies, through a story approach which relates to situations they might encounter in their own lives. He uses a multi-media teaching method in which children not only read and write, but record homework on cassette tapes

and create art projects. Each of his students this year will construct, while learning about, a *sukkah*, *aron kodesh*, *hanukkiyah*, Jewish flag, *mezuzah* and other objects.

"Every month they make something. So the kids know that Jewishly they can also create and be artistic and show what they can do. And the whole family can be involved," said Rabbi Portal.

"I think children have a lot of talent, if they're stimulated. It's like a cake. If you have a lot of products to make cake with and they just sit on the table, it's going to sit there. Unless you get up and mix it and blend it, you'll have no cake. The kids have



Rabbi Mac Portal teaching Talmud to two of his sixth-grade students, David Rosen (l) and Noah Potter (r).

talent. They have to be channeled properly."

The enthusiastic "baker" keeps busy as teacher, rabbi, religious school principal and organizer of other programs for children such as monthly

social events, sleep-over Shabbat programs at his synagogue and bus trips to spots of Jewish interest. How does he manage it all?

"I have a lot of energy, that's all."

Classified

Classified ads are available at 75¢ per line (at least two lines, please). Send your ad, with check, to Classified Ads, The Jewish Voice, 101 Garden of Eden Rd., Wilmington, DE. 19803. (302) 478-8200

SINGLES - SHALOM ADVENTURE - the successful modern day Jewish matchmakers/dating service. Join our adventure. Women to 45, Men to 60. Box 2132, Wheaton, Md. 20902.

BRASS ANYTHING polished and lacquered. Call (302) 655-5654.

BABYSITTERS - experienced. Tammy-14, Elizabeth-15. Also available for parties as mothers helpers. 475-6181 and 475-7474.

LONGBOAT KEY - 2 BR, 2 B, tennis, pool. Now to Jan. 15, '84; after March 15, '84. \$1500 month. 428-1688 or 764-4540.

STUDENT TOUR & CAMP CONSULTANTS. No fee charged. 12 yrs. exp., over 500 programs represented. Gen. & specialty camps. Cross-country & foreign travel. Art, cooking, farming, computers, college study, etc. Ardmore office: Dorothy Graff, Diane Petrosky (215) 642-5882.

KESHER ISRAEL SYNAGOGUE of W. Chester, Pa. needs Sunday School teachers for grades 1 & 4. Please call Rabbi Mac Portal at (215) 692-9957 or (215) 696-7210.

WANTED - COMPANION and light housekeeping for elderly widow. Live-in. Box TW, Jewish Voice, 101 Garden of Eden Rd., Wilmington, DE 19803.

BABYSITTER for infant in my North Wilm. home, M-F. Mature, dependable woman wanted. Call 475-5926.

ART/DECORATING - Nat'l co. looking for creative persons. PT/FT. Will train. (215) 274-8035.

Support
Jewish Voice
Advertisers

Kathleen and Clyde Moon

trading as

Jack Lundy's

Give Us A Chance!

Thank You

3604 Miller Rd.
764-5036

M-Sat. 10-8
Sunday 9-8

5%
SR. CITIZEN
DISCOUNT
EVERY TUESDAY ONLY
SEE COURTESY DESK
FOR DETAILS

Thriftway

WE REDEEM
FEDERAL
FOOD STAMPS

Check Cashing PRIVILEGES.

SAVE YOUR TAPES!
Synagogues, churches & organizations receive 1% of register tapes.

SUPERMARKETS

Tri-State Mall
ROUTE 95 & NAAMANS RD., CLAYMONT, DEL. 19703
STORE HOURS: Sunday 9 am-5 pm
Mon.-Sat. 8 am-9 pm

Graylyn Crest Center
1718 MARSH RD., WILMINGTON, DEL. 19808
STORE HOURS: Sunday 9 am-6 pm
Mon.-Sat. 8 am-10 pm

Penn Mart Center
DU PONT BLVD. & BASIN RD., NEW CASTLE, DEL.
STORE HOURS: Sunday 9 am-6 pm
Mon.-Sat 8 am-10 pm

Faulkland Road
1710 FAULKLAND RD., WILMINGTON, DEL. 19808
STORE HOURS: Sunday 9 am-6 pm
Mon.-Sat 8 am-9 pm