



# No Gift Touches More Lives

## Support The 1997 UJA Federation Campaign!



### UJA FEDERATION CAMPAIGN

For ourselves. For our children. For Israel. Forever.

# The JEWISH VOICE

Jewish Historical Society DE  
505 Market Street  
Wilmington, DE 19801

Vol. 30, No. 8    2 Shevat 5757    January 10, 1997    16 Pages  
PUBLISHED BY THE JEWISH FEDERATION OF DELAWARE, P.O. BOX 2193, WILMINGTON, DE 19899-2193

## Answer the Call for Super Sunday February 9

By DAN WEINTRAUB  
Special to *The Jewish Voice*

Volunteers are needed to call friends and neighbors on Sunday, February 9, 1997 for Super Sunday, which is an all day phone-a-thon on behalf of the 1997 UJA/Federation Campaign. This year Super Sunday for New Castle County will be held at MBNA Oglethorpe-Stanton. The UJA/Federation Campaign is administered locally by the Jewish Federation of Delaware. Local beneficiaries of the UJA/Federation Campaign include Albert Einstein Academy, Gratz Hebrew High School, Jewish Community Center, Jewish Family Service, Hillel at U of D, and the Kutz Home.

Volunteers will have the opportunity to learn more about where their *tzedakah* goes with a gift to the 1997 UJA/Federation Campaign. What's more, volunteers can undertake the positive *mitzvah* of calling to give friends and neighbors the opportunity to contribute to the Campaign. Special efforts this year

include providing people under forty with an opportunity to make an annual gift, if they do not already do so, as well as reaching out to Jews in the Newark-Bear-Hockessin areas.

Super Sunday is an opportunity for callers to tell the story of The Jewish Federation of Delaware 1995 Jewish Population Study of Delaware. The Jewish Federation of Delaware 1995 Jewish Population Study of Delaware revealed a larger than expected Newark area Jewish community with more substantial needs. The data also pointed to relatively low levels of familiarity with local agencies which benefit from the UJA/Federation Campaign. Super Sunday presents the opportunity to reach out to those who are not involved and it also presents an opportunity to educate less involved Delaware Jews about communal institutions.

Telephone volunteers are needed to make phone calls during all three of the Super Sunday shift times. The morning

shift will be from 9:15 am - 12 noon. The mid-day shift will be from 11:15 am - 2:00 p.m. The young adult shift will be 4:15 p.m. - 7:00 p.m.. There will also be opportunities to participate in follow-up phone-a-thons. To volunteer for Super Sunday call the Jewish Federation of Delaware at (302) 427-2100.

Heidi Kinsella is the Chair of the Super Sunday Committee. Kinsella also volunteers as the Co-Chair of the Young Leadership Development Alliance of the Jewish Federation of Delaware. Heidi and her husband Chris reside in Wilmington.

Answer the call for Super Sunday volunteers. Answer the call for Super Sunday pledges to the 1997 UJA/Federation



Doug Cotler, in the studio. He'll be performing the night before Super Sunday at Congregation Beth Emeth at 7:30 pm, Feb. 8 for the 1997 UJA/Federation Campaign Community Event - Family Concert. For ticket information call 427-2100.

Campaign administered locally by the Jewish Federation of Delaware. At home, in Israel and in 58 countries around the world, no gift touches more lives.

## Harry Cohen Foundation Gift Presented by Sadie Toumarkine

At the December 12 meeting of the Jewish Federation of Delaware, Mrs. Sadie Toumarkine presented a \$26,073.50 check from the Harry Cohen Foundation to the Federation. Leslie Newman, President of the JFD accepted the gift and thanked Mrs. Toumarkine for the myriad of programs and services that her father's legacy made possible. The Foundation was established in 1959, two years after Harry Cohen's death. At that time, his estate of \$1,250,000 was bequeathed to charitable endeavors. Since 1959 about \$3 million has been distributed to various institutions and synagogues in our community and in Israel. In addition to Jewish organizations, the Foundation has supported hospitals, Toys for Tots, and the Needy Family Fund.

The Foundation's beneficiaries include the JCC, the Kutz Home and the Federation. This year's allocation to these three agencies totals \$61,280.96. The cumulative total contribution to these agencies is \$1,027,728.98. The cumulative total contribution to two local synagogues is \$1,903,000.

Harry Cohen's life in America began when he arrived as a poor immigrant from



Harry Cohen

Odessa in 1905. Subsequently, he made the transition to successful businessman and philanthropist. He worked as a barber, leather worker and coal stove blackener until

he saved enough money to open a grocery store at 13th and Wilson Streets. He operated a variety of businesses including a very successful furniture store.

In 1932 Cohen enlisted Charles L. Belfint to join a campaign to put the then vacant Adas Kodesch Center at 512 French Street to good use. Belfint played an active role in developing a dedicated committee which in 1934 opened the YM/YWHA with Lou Simon as president and Isadore Solod as executive director.

Cohen was a prime mover of the early Jewish Federation of Delaware. He served as treasurer for two years and campaign chairman for two succeeding years. He was dedicated to Jewish education and in 1940 wrote to Milton Kutz, Federation president, asking that a survey about Jewish education in Wilmington be undertaken. This resulted in the establishment of the Associated Hebrew School in 1943.

In 1945 he offered \$50,000 for a campaign for a new YM/YWHA building. He believed that the Jewish population was moving toward the northern suburbs and that a new location for the Y would be appropriate. While his offer was not accept-

ed, he set aside \$58,077.10 in his will for this purpose.

In 1946 Harry Cohen and Milton Kutz each pledged \$25,000 to the Federation campaign. These two were the most substantial contributions that had ever been made to Delaware's campaign. In 1948

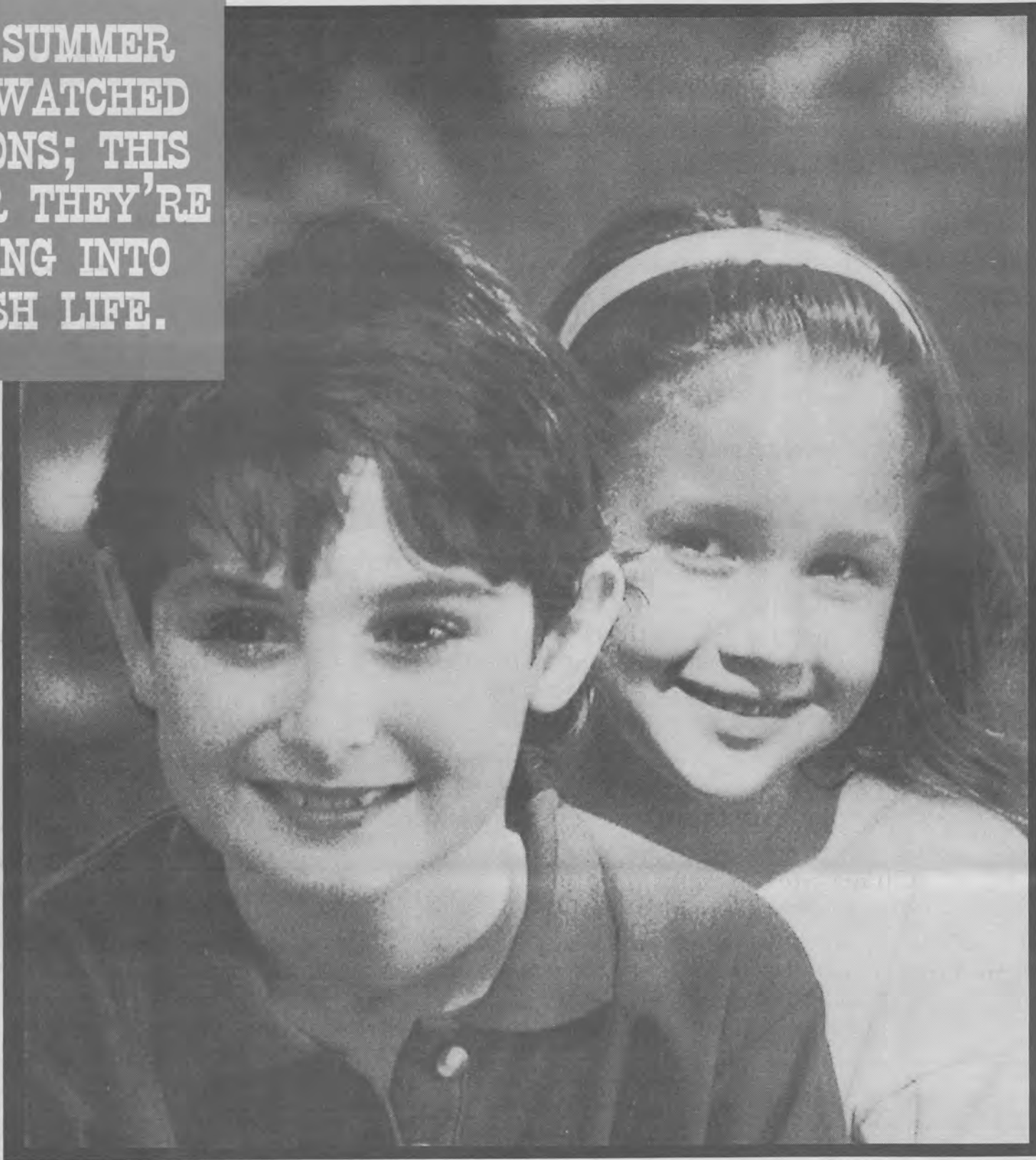
Continued on page 12

### INSIDE

ARTS • ENTERTAINMENT • BOOKS.....	13
BUSINESS/PROFESSIONAL DIRECTORY.....	10
CALENDAR OF EVENTS.....	15
CAMP GUIDE.....	11
DINING AND MORE.....	8
EDITORIAL.....	4
MUSIC AND THEATER.....	9
NACHES.....	15
OBITUARIES.....	14
OPINION/FOCUS ON YOUTH.....	5
PANIM EL PANIM.....	6
SYNAGOGUE LIFE.....	14



**LAST SUMMER  
THEY WATCHED  
CARTOONS; THIS  
SUMMER THEY'RE  
JUMPING INTO  
JEWISH LIFE.**



**P**laying ball, canoeing, color wars and shaping the next generation of Jewish community. They're all part and parcel of the Jewish day camps funded by your contribution. The UJA Federation Campaign is at the heart of a sacred Jewish trust to build, strengthen and care for our community around the world. Keep that trust. Make your increased gift today. At home, in Israel, and in 58 countries, no gift touches more lives.



**Jewish Federation of Delaware**  
P.O. Box 2193  
Wilmington, DE 19899-2193  
302-427-2100



**UJA FEDERATION CAMPAIGN**  
For ourselves. For our children. For Israel. Forever.





# 1997 UJA/Federation Community Campaign Events



The entire community is welcome for the following Campaign events:

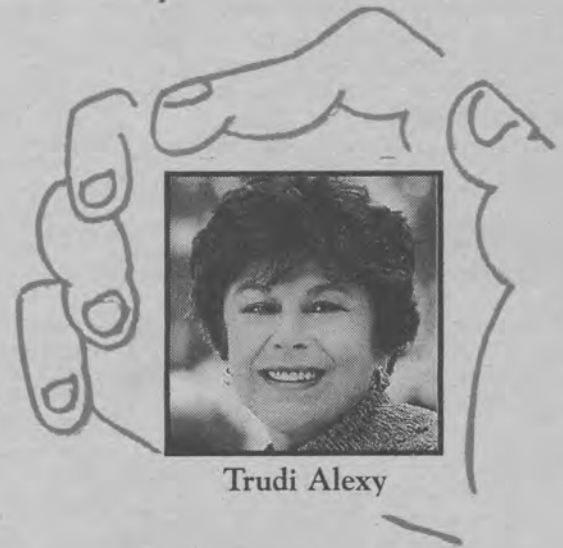
Modern Marrano **Trudi Alexy** is the guest for the **Federation Shabbat and Study Session** January 24, 1997 at 8:00 pm, and January 25, 1997 at 4:00 pm at Beth Shalom in Wilmington  
**Chairs: Rhoda and Steven Dombchik**

Come hear folksinger **Doug Cotler** at the **Community Event** on February 8, 1997, 7:30 pm at Beth Emeth.  
Tickets: \$10 adults in advance (\$12 at the door), \$5 for children.  
Call JFD at 427-2100.  
**Chairs: Ruth Weinstein and Barbara Yalisove**

**Super Sunday Phonathon** at MBNA in Stanton, DE on February 9, 1997.  
To volunteer for Super Sunday call 427-2100.  
**Chair: Heidi Kinsella**

**Southern Delaware Federation Shabbat** on January 31, 1997 at Beth Shalom of Dover at 7:30 pm  
Speaker to be announced.  
**Chair: Steven Schwartz**

**Hillel Students Campaign Event** at the University of Delaware's Hillel Center on February 23, 1997.  
11:00 am to 1:30 pm



Trudi Alexy



Doug Cotler

## No Gift Touches More Lives



**UJA FEDERATION CAMPAIGN**

For ourselves. For our children. For Israel. Forever.

For tickets to the Doug Cotler Community Event - Family Concert fill out the response form below and send it to the Jewish Federation of Delaware. To volunteer for Super Sunday please fill out and return the response form below or call the Jewish Federation of Delaware at (302) 427-2100.

### 1997 UJA/FEDERATION CAMPAIGN EVENTS RESPONSE FORM

To order Cotler tickets or to volunteer for Super Sunday, please complete this form and return it in the enclosed return envelope (with a check if applicable) to the Jewish Federation of Delaware at P.O. Box 2193, Wilmington, DE 19899-2193.

Name \_\_\_\_\_  
Address \_\_\_\_\_  
City \_\_\_\_\_ State \_\_\_\_\_ Zip \_\_\_\_\_  
Phone \_\_\_\_\_

Count me in as a Super Sunday volunteer!

- Morning shift 9:15 am - 12:00 noon
- Mid-day shift 11:15 am - 2:00 pm
- Young adult shift 4:15 pm - 7:00 pm

Please send me \_\_\_\_\_ Doug Cotler tickets for adults at \$10 each.  
Please send me \_\_\_\_\_ Doug Cotler tickets for children at \$5 each.  
Total enclosed \$ \_\_\_\_\_



Please make your check payable to the Jewish Federation of Delaware.



## EDITORIAL

## Peace Process Will Derail Violence

When the Sinai Desert, captured by Israel in 1967 during the Six Day War, was returned to Egypt in exchange for a peace treaty, war was over. But friction remains. When the Labor government offered the Golan Heights to Syria in 1994 in exchange for peace, Assad refused. Israel and Jordan's peace, while not as warm as it has been, is a refreshing reminder of what can be.

The peace process can be compared to taking a difficult exam in which one answers the easy questions first. Once those are completed, work begins on the more challenging questions. Hebron itself is not the burning issue. When Israel will redeploy its troops is not the desperately critical stage many may believe it to be. Hebron is a symbol. It represents the give and take and the risks taken which define the entire peace process.

Prime Minister Benjamin Netanyahu is

negotiating under an Oslo agreement he and his supporters distrust. Two of the three conditions Netanyahu outlined to the U.S. Congress, security and reciprocity, are areas in which progress is slowly but steadily climbing between Israel and her negotiating partner, Yasir Arafat. Netanyahu's third condition, a democracy as a negotiating partner, will most likely remain an unrealistic fantasy.

It remains obvious that extremist violence must always be condemned, quickly and forcefully, by both sides. Middle East violence predated the peace process. It has been used by extremists, on both sides, in attempts to derail the peace process. Violence should subside as the benefits of the peace process continue to come to fruition.

## VOICE MAIL

## Education Never Ends

To the Editor:

As an educator, I was particularly touched by the article by Sue Paul entitled "Education For The Next Century." By enlisting the connections between ho-ream, (parents), ho-ra-ah, (education), and mo-ream, (teachers), Ms. Paul leads us into an article filled with specific examples of Jewish life which parents can share with their infants, toddlers, and school-aged children.

Another issue she raises is the importance of continuing education for parents, important for several reasons. First, education pro-

vides a magical vehicle for parents and children to explore the world together. Second, it lets our children understand the value of education as a life style. Third, ho-ream, should realize that everything they do make them the most influential mo-ream of all. In Jewish education, "We are transmitting the past through the present into the future." The responsibility for this is never ending, and lies with us all.

Thank you for this article.

Sincerely,  
Susan Ziman Silverberg  
Educator and Member of Beth Emeth

## Mitzvah of Torah Study

To the Editor:

I was disappointed that the editorial of Dec. 27, which urges Jews to set a Jewish example, and mentions the extremely important mitzvah of tzedakah, does not mention the equally important mitzvah of (Jewish) study.

Readers anxious to learn the importance of study can turn to many sources in Torah, for example, Bamidbar Rabbah 19:3.

Sincerely,  
Dov Seidel  
Newark, DE



Published semimonthly, and monthly in July and August, by the Jewish Federation of Delaware.

Jordan Sopinsky, **Editor**  
Irv Epstein, **Advertising Manager**  
Judy Wortman, **Executive Vice-President, JFD**  
Daniel H. Weintraub, Esq., **Publisher's Representative**

Steve Cohen, **Entertainment Reporter**  
Priscilla Siegal, **Community Reporter**

Suzanne Cohen, **Advertising Sales Intern**

### Editorial Committee:

Connie Kreshtool, **Chair**; Marilyn Cooper, Matt Denn, Irving Kaufman, Barbara S. Keil, Frances Klein, Ellen S. Meyer, Bobbie Tomases, Karen Venezky.

### Business Committee:

Suzanne Grant, **Chair**; Mark Levitt, David Rosenblatt, Dale Rosenthal, Michael Schwartz, Lawrence I. Zutz.

Editorial opinions expressed in this newspaper are those of the newspaper and not those of any individual or other organization. Signed editorials and letters do not represent the view of the newspaper, but rather express the view of the writer. No material will be accepted by The Jewish Voice which is considered against the best interests of the Jewish community. The Jewish Voice does not guarantee the kashruth of any of its advertisers. Printed material and video tapes sold by our advertisers have not been reviewed by the Jewish Voice, nor are they endorsed in any way by the Jewish Voice.

Member of the American Jewish Press Association and Jewish Telegraphic Agency.  
©1996 The Jewish Voice Printed by Dover Post Company

Periodicals postage paid for The Jewish Voice (USPS-704160) at Wilmington, Delaware. Subscription price: \$10.00. Circulation: 3,200. Mailed to subscribers and contributors to the Jewish Federation of Delaware. POSTMASTER: Send address changes to The Jewish Voice, P.O. Box 2193, Wilmington, DE 19899-2193. (302) 427-2100. The FAX number of The Jewish Voice is (302) 427-2438.  
E-Mail: jewishvoice@aol.com



## Special Message from UJA:

We share the concerns of many communal leaders and fund raisers loyal to the UJA Federation system that the settlement policies of the current Israeli government and pending legislation concerning religious conversions could have a severe impact on the excellent momentum of the 1997 Annual Campaign and on our ability to raise dollars "for Israel." As American Jews we take great pride in Israel's democracy; we've been the first to point out that it's the "only true democracy in the Middle East." The people of Israel, last spring, democratically elected their new government. Some within the UJA Federation family who are opposed to this government's handling of the peace process, its settlement policies and its stand on religious pluralism are now expressing discomfort about giving money and about soliciting donors and prospects.

In our view it would be a great tragedy if we were unable to separate our individual feelings and opinions about the transient policies of an Israeli government from our historic obligation to provide the resources necessary to furnish humanitarian services to those in real need. With respect, it is our firm belief that the one has nothing to do with the other. We support the people of the State of Israel. Funds from our Campaigns are used only within the "green line" and that, as most people know, is something some American donors oppose. Our communities also include people who believe we should support settlements and the people who live in them.

UJA is not a political organization and it must not become one. Our structure, governance and by-laws empower us as a Campaign organization whose goal is to help American Jewish communities raise money for all Jewish needs at home, in Israel and in 60 countries around the world. That is what we are about. Yet, as a fund raising organization with a long history of

service to Israel we have engaged in discussions with the new Prime Minister and his top aides and have made clear that the religious pluralism issue could have a negative effect on our abilities to raise money for such vital items as the rescue of Jews from the FSU and the care of those in terrible need in Israel itself. We have also worked diligently over the past few months and succeeded in convening the top leadership of the American Reform and Conservative movements, along with our colleagues at CJF and UIA into a helpful and fruitful dialogue which has resulted in two recent statements, by top Rabbinic leaders of those movements, of total support for the Federations and for the UJA Federation Campaign ... even in the face of real opposition to current government policy within those movements. (Those statements have been enclosed for your information)

Withdrawing support from the UJA Federation Campaign is not going to alter the policies of a sovereign government, but it will certainly punish the new immigrant citizens whom we are trying to help start a better life. It will certainly punish the 220,000 Israeli kids who live below the poverty line and, worst of all, it will turn the mitzvah of tzedakah which is supposed to be about righteousness and responsibility into nothing but a political weapon. We can't let that happen.

We respect each individual's real concerns. We encourage each person to speak out in his or her own way and we support each community's right to make its feelings known. We also ask everyone to keep our common purpose in mind.

Richard L. Wexler  
National Chairman  
Bernard C. Moscovitz  
Chief Operating Officer  
United Jewish Appeal, Inc.  
December 20, 1996

### Excerpts of message to Union of American Hebrew Congregations Address to UAHF National Board, Rabbi Eric H. Yoffie, President

...We also hope to join with all those in Israel who yearn to retrieve their ties to Torah by transforming a stagnating Judaism. And we will join too with our friends in the Federations world, who have supported us and asked to work with us; and it goes without saying that we will continue our support for their efforts to provide services to the needy of our people, at home, in Israel and around the world. ...

### Excerpts of message to The United Synagogue Board of Directors/ Advisory Council, Rabbi Jerome M. Epstein, President

...Now, the question I have been asked most often in the past several months regarding this issue is what action we should take regarding UJA or Federation Campaigns. For me, the answer is clear. We must continue to support our local Federations and the national UJA and provide total commitment. We must urge our congregants to follow our examples of support. I make this statement for three reasons:

Firstly, the Council of Jewish Federations and the United Jewish Appeal or not the cause of our problem. To the contrary, they have demonstrated over the past several months a genuine willingness to be our partners in the articulation of distress to the government of Israel. The recent General Assembly of the Council of Jewish Federations witnessed the adoption of a strongly worded resolution urging the government of Israel to reconsider any plans for legislation that could be perceived as an

attack on the integrity of non-Orthodox religious Jewry. They have formed a Committee on Religious Pluralism and I have been privileged to join them as an equal member of the Committee.

Secondly, our congregants take our message seriously. We should not provide any Jew with an "excuse" not to give tzedakah. Fundraising on the part of North American Jewry is very fragile. It would not behoove us to provide any opening for one to say, "I don't have to give" or worse, "I'm supporting the cause of pluralism in Israel by not giving to UJA or my local Federation." In my mind, such action would be unconscionable.

Thirdly, the causes of UJA and our local Federations are ones that need and deserve our support. Do we really want to hurt Jews in the Former Soviet Union or any distressed land? Do we want to make the lives even more painful for Jews who have made Aliyah and are struggling to make a new home in Eretz Yisrael? And, what about local needs? There are Jews in our neighborhoods who need our help. Will we turn our back on them? We call for Jewish continuity. Are we prepared to forsake that cause?

It is important to continue to let our local Federation leadership and the various levels of UJA leadership know that we need and expect their support in what I know will be a continuing battle in Israel. It is our responsibility to continue pressuring for their support. And, I believe it is their obligation to respond in a positive fashion. We have a right to expect their partnership — for our cause must be theirs as well. But I believe that they have a right to expect our partnership because their cause, too, must also be ours ...



**THE JEWISH VOICE**  
**FOCUS ON YOUTH**  
**OPINION**

### JFD Israel Grants

The Jewish Federation of Delaware announces the availability of grants for ISRAEL EXPERIENCES for high school students between 15 and 17 years of age. These grants are for structured summer programs in Israel that are sponsored by national or international Jewish youth organizations and are approved by the Federation.

The deadline for applying is Feb. 15, 1997. Awards will be announced by March 15, 1997.

For applications and information, call or write to Judy Wortman, Executive Vice President, Jewish Federation of Delaware, P.O. Box 2193, Wilmington, DE 19899-2193.

The following are criteria for eligibility:

1. Applicants must still be in high school when they return from Israel.
2. Preference will be given to applicants who have not participated in prior Israel programs.
3. Applicants must provide two letters of recommendation from teachers, rabbis, youth advisors, coaches, employers or supervisors.
4. Applicants must commit themselves to attending briefings before and after their Israel Experience.
5. Applicants must commit themselves to community service when they return. Among the options available are volunteer work in local agencies, synagogues or organizations; involvement in the Federation Campaign; recruitment of peers for subsequent Israel Experiences; leadership roles in Jewish youth groups; public speaking to the community about Israel, etc.
6. Applicants' parents must contribute to the 1997 Campaign, thereby becoming members of the Jewish Federation of Delaware.

Funds for these grants have been made available through an allocation from the 1996 UJA Federation Campaign.

### Silverman Israel Scholarship Available

The Sylvia & Isadore N. Silverman Scholarship Fund will be awarding its seventh scholarship to a deserving youth for a Jewish summer experience in camp or Israel. Applications may be picked up at the AKSE office, Washington Street Ext. and Torah Way, Wilmington, DE 19802, and should be returned by March 14.

The fund was established in 1989 to honor the Silvermans' 55th wedding anniversary by their four daughters and many friends.

## For Douglas Herrmann, to Give is Better than to Receive

### FOCUS ON YOUTH

By PRISCILLA W. SIEGEL  
 Jewish Voice Community Reporter

In this season of giving and receiving, of being besieged by mail from needy charities, and reading about "the neediest cases" the unusual philanthropic story of Wilmington's Douglas Herrmann is both heartwarming and inspirational.

When Douglas Herrmann, son of Wilmington residents Susan and Steve Herrmann, contemplated his forthcoming Bar Mitzvah in 1989, he had the model of his older brother's Bar Mitzvah in mind—especially the gifts. "He got a lot of things that two or three years later didn't have much meaning for him any more," recalled Douglas. "I wanted to have something that would be important to me for a long time—something that would always remind me of my Bar Mitzvah." And, according to Steve Herrmann, Rabbi Peter Grumbacher had been encouraging the Hebrew school students to think in terms of charity.

After discussing these thoughts with his father, his grandfather, his mother and brother, Doug came up with the idea of establishing the Douglas Herrmann Philanthropic Fund with the Jewish Community of Delaware Endowment Fund. The Bar Mitzvah invitations went out with the suggestion that in lieu of gifts, a donation be made to the Fund which would annually distribute funds to selected charities.

"The Bar Mitzvah guests," noted Steve Herrmann, "were very generous," and Doug

ended up with close to \$5,000 with which to start his foundation. Managed by the Jewish Community of Delaware Endowment Fund, the fund has grown to almost \$16,000. Each year, Doug selects causes close to his heart to receive distributions from the fund, with two constants: the Jewish Federation of Delaware and Douglas' alma mater, the Tatnall School.

Other recipients have included the West End Neighborhood House, where Doug



Left: Douglas Herrmann, 13 years old. Above: now a junior at the University of Virginia.

tutored and "learned about the underprivileged from the inside," Oberlin College (because of a camp counselor from Oberlin who died of cancer), Planned Parenthood (of which his mother serves as president), and Family and Children Services of Delaware.

Accustomed as we are to thinking of the younger generation as the "me" generation,

Douglas' concern for the needy is refreshingly uplifting. While modest about his sense of "tzedakah," he is genuinely enthusiastic about his philanthropy. "It makes me feel great that I am supporting the things that I feel are important," he commented. And he is pleased to think that his philanthropic activities might serve as a role model for

Continued on page 12

## Tu B'Shevat: Have a Family Tree Seder

By KAREN MOSS  
 Special to The Jewish Voice

Hanukkah has come and gone, and Purim and Pesach are months away. Sounds like it's time for a tree seder!

Tu B'Shevat, the New Year or Birthday of the Trees, falls on Wednesday evening, January 22 and Thursday, January 23. The first mention of Tu B'Shevat can be traced to the Mishnah (Rosh HaShanah 1:1) where it is recorded as one of four New Years. References to the Tu B'Shevat Seder don't

go back quite that far. It originated with the mystical sages of 16th century Safed.

The Kabbalists created a service which includes eating at least 15 kinds of fruit, drinking four cups of wine and reciting certain passages from the Bible, Talmud and Zohar. It adapts wonderfully for a family.

If you have children who are so young that they couldn't possibly sit through even a casual seder, just read a story about trees and serve 15 kinds of fruit (and/or nuts) at din-

ner. They can be disguised or combined. For example, a Waldorf salad containing apples, walnuts and lemon juice would count as three types. The blessing for fruit is: *Baruch Atah Adonai, Eloheinu Melech Ha Olam, Borei P'ree Ha Etz*. Let your child recite the blessing and guess how many kinds of fruit he or she is about to eat. Then admonish him to pay close attention during the meal, because you'll count after the meal and see if he guessed correctly. Why 15? Because Tu B'Shevat falls on the 15th day of the Hebrew month of Shevat.

Another variation is to include the seven varieties of produce mentioned in the Bible. They are: wheat, barley, pomegranate, olives, figs, grapes and dates. A cookie or cracker will suffice for the wheat category. Good luck finding a pomegranate! I have been told that grenadine syrup contains the juice of pomegranates, although I can't vouch for it. Check with a rabbi.

While not included among biblical produce, almond and carob have a time-honored place at every Tu B'Shevat seder I have ever seen. In Israel, the almond tree (*shekay-diyah*) blooms at about this time. It is a harbinger of spring that Israeli children have nicknamed "the king of Tu B'Shevat." Carob, or *bokser*, is a different story altogether. European Jews tried very hard to include fruit from the land of Israel in their Tu B'Shevat celebrations. Dried carob was one of the few fruits that could be depended upon to survive the long boat trip without spoiling, so it became a staple. To make it more edible, try steaming your *bokser* for at least an hour. This is not traditional, but it's not forbidden, either.

Now, back to the seder.

Continued on page 15

## Touch Points

Hillel provides activities and a location for Jewish college students to socialize, pray and learn.



### Your contribution helps:

- ✧ Jewish Family Service provide hope to frail elderly at risk of losing their independence.
- ✧ a state-wide Jewish teen coordinator involve teens in programs which bring their Jewish heritage to life.
- ✧ Albert Einstein Academy, Delaware's only Jewish day school, increase standardized test scores over the past 3 years.



The Jewish Federation of Delaware  
 PO Box 2193  
 Wilmington, DE 19899-2193  
 (302) 427-2100, Ext. 17  
 Fax (302) 427-2438  
 E-Mail: Delawarejfd@cjf.noli.com



**UJA FEDERATION CAMPAIGN**

No Gift Touches More Lives





# PANIM EL PANIM

(Face to Face with JFD People)



## It's All in the Family for Doug Cotler Concert Committee

**By DAN WEINTRAUB**  
*Special To The Jewish Voice*  
When Grammy Award winner and folksinger Doug Cotler performs in Delaware on February 8, 1997 at 7:30 p.m. at Congregation Beth Emeth, it will

be a family affair. Cotler's song "Standing on The Shoulders" is a musical tribute to the value of family. The 1997 UJA/Federation Campaign Community Event - Family Concert volunteer planning committee is made up of groups of

family members. Co-chairs Ruth Weinstein and Barbara Yalisove are sisters. Joining them on the committee are Phyllis Aerenson and her daughters-in-law, Annette and Marci; Sara Berman and her sister Edyce

Livingston; Jinx Blum and her daughter-in-law Lauren; Arlene Davis and her daughter-in-law Mary; and Faye Goldstein and her daughter-in-law Cindy. The Doug Cotler Community Event- Family Concert volunteer committee includes a number of sets of mothers and daughters, too, such as Ellen and Beth Koniver; Deanne and Debra Kattler; Myrna Ryder and Rebecca Neipris; Lynne

Continued on page 7

### Highlights of the December JFD Board Meeting:

•Rabbi Lawrence Malinger presented the D'var Torah emphasizing the importance of Hanukkah in our lives.  
•Mrs. Sadie Toumarkine presented a check to the JFD from the Harry Cohen Foundation in the amount of \$26,073.50 which represents an increase over last year's gift. (please see related article).  
•Ellen Koniver, Chair of the Israel Summer Experience Committee, introduced Michelle Jonas and Michael Stiebel. Both spoke enthusiastically about their summer in Israeli and their commitment to a Jewish identity. Michelle and Michael were two of nine students who received funding as part of the JFD continuing initiative to encourage youth to visit Israel.

•The Board voted to accept the Council of Jewish Federation Resolution calling for the government of Israel to abstain from changing the current situation regarding recognition of conversions and the Law of Return.

•AJ Green, Chair of the Capital Maintenance Committee, reported that the JCC auditorium roof and floor repair is complete. The next major area requiring repair is the JCC gymnasium roof.

•Steve Dombchik, Chair of the Endowment Committee, updated the Board on the growth of the Endowment Fund, now worth approximately \$6 million. The Board approved the committee's suggestion that the rate for annual distributions remain at 6%. The Board was updated on the Goldinger Trust which consists of 300 acres south of Garrison's Lake in Kent County.

•The committee is evaluating making the endowment a separate corporate structure from the JFD.

•Heidi Kinsella, Co-Chair of YLDA (Young Leadership Development Alliance) and Chair of Super Sunday gave an update. YLDA seeks to educate future leaders, raise funds and have fun. The first event, held November 16, attracted about 35 people. Super Sunday will be held Feb. 9 at MBNA and volunteers as well as Super Sponsors (cost \$100) are needed.

•Coming events were announced, including:

- 1) Jan. 24, 25: Federation Shabbat with Trudi Alexy at Beth Shalom
- 2) Feb. 8: Family concert with Doug Cotler at Beth Emeth
- 3) Feb. 9: Super Sunday - MBNA in Stanton

### MODERN MARRANO TRUDY ALEXY

To Speak at Federation Shabbat at Congregation Beth Shalom on January 24, 1997 at 8:00 pm and January 25, 1997 at 4:00 pm

All are welcome to join in this Shabbat experience in association with the 1997 UJA/Federation Campaign

Answer the call...  
Every gift counts!  
**Super Sunday '97**

SUPER SUNDAY  
FEBRUARY 9, 1997  
1997 UJA/Federation Campaign

### HELP WANTED

We are seeking energetic and committed individuals for a rewarding experience as a Super Sunday Volunteer, February 9, 1997. Join our team of people who believe that *no gift touches more lives*. Excellent benefits. No experience necessary.

**PLEASE JOIN US.** The calls and contributions you make through SUPER SUNDAY determine the quality of life in our community in the year ahead. Super Sunday, which will be held on February 9, 1997, is a most significant event in the UJA/Federation Campaign of the Jewish Federation of Delaware. It is a day long phone-a-thon in which 200 volunteers will be contacting 2,500 of their friends and neighbors to ask them to contribute to this year's JFD Campaign.

### Jewish Federation of Delaware 1997 UJA/Federation Campaign

TO VOLUNTEER FOR SUPER SUNDAY, PLEASE RETURN THIS REGISTRATION TO  
JEWISH FEDERATION OF DELAWARE  
P.O. BOX 2193, WILMINGTON, DELAWARE 19899-2193  
or call us at: (302) 427-2100

Name: \_\_\_\_\_ Home Phone Number ( ) \_\_\_\_\_

Address: \_\_\_\_\_ Work Phone Number ( ) \_\_\_\_\_

I will participate from: (These times include a training session)

- 9:15 a.m. - 12:00 p.m. (morning shift)
- 11:15 a.m. - 2:00 p.m. (mid-day shift)
- 4:15 p.m. - 7:00 p.m. (young adult shift, followed by a pizza party)
- I would also like to help with follow-up phone-a-thons. Please contact me.



SUPER SUNDAY (NEW CASTLE COUNTY) WILL BE HELD AT  
MBNA OGLETOWN-STANTON  
(directions will be mailed to you)



**UJA FEDERATION CAMPAIGN**  
For ourselves. For our children. For Israel. For ever.





PANIM EL PANIM  
(Face to Face with JFD People)



Concert Committee

Continued from page 6

Marna and Tammy Lew; Anita Hershon and Andrea Feinman; and Elaine Friedberg and Kathy Bloom.

The volunteer committee boasts a three generation family with Marilyn Levin, her mother Bettye

Herman and her daughter Staci Levin. Ruth Pernick is on the committee with her daughter-in-law Paula Pernick and her daughter Debbie Pernick Poppiti. Also participating are husband and wife Rabbi Larry Malinger and Samantha Malinger.

These families of volunteers will

help with ticket sales and promotion of the 1997 UJA-Federation Campaign Community Event - Family Concert with Doug Cotler. This is an opportunity for the community to come together in musical recognition of our communal *tzedakah* efforts through the UJA/Federation Campaign which is administered locally through the Jewish Federation of Delaware. For those who have already made a pledge for the 1997 Campaign the concert is a thank-you. For those who have not yet done so, the concert is a reminder that the community needs your support. Beneficiaries of the 1997 UJA/Federation Campaign include: Albert Einstein Academy; the Jewish Community Center; Jewish Family Service; Gratz

Hebrew High School; Hillel at the University of Delaware; and The Kutz Home for the Aged. At home, in Israel and in 58 countries around the world *no gift touches more lives.*

Why not bring your family to see and hear Doug Cotler? Tickets are available from any member of the committee, the Jewish Federation

of Delaware, the Jewish Community Center, and several Delaware synagogues. To order tickets by mail from the Jewish Federation of Delaware, send a check in the ticket(s) amount with a note which includes your return address to: The Jewish Federation of Delaware, PO Box 2193, Wilmington, De 19899-2193.



The Cure for the Common Cold

Jacques Ferber's Winter Fur Sale

58 E. Lancaster Avenue Archmore, PA (610) 642-5230

1708 Walnut Street Philadelphia, PA (215) 735-4173

4001 Kennett Pike Wilmington, DE (302) 652-4340

JACQUES FERBER Greenville Established 1879

Celebrating 118 years of service



Doug Cotler will be performing Feb. 8 at 7:30 pm at Beth Emeth for The 1997 UJA/Federation Campaign Community Event - Family Concert. For ticket info., call JFD at 427-2100.

Invitations - Announcements Stationery - Business & Social Party Accessories Personalized Items, Etc.

Camper Needs: Name Tapes • Post Cards • Stationery • Personalized Pencils



Charlotte Fischer 656-8604



BERGER BROS INC.

OFFICE FURNITURE — OFFICE SYSTEMS



Call (302) 655-7166



BERGER BROS INC.

Since 1919 Market at Third Sts., Wilm., DE

Hours: 8:00 to 5:30

Sat. 8:30 to 2:00



Teens N Up



Sportswear • All-Occasion Dresses • Suits From Daytime to Black-Tie

Perfect for Bat Mitzvahs

Stevenson Village in Baltimore, MD, 2 min. from 695 off exit 21 (410) 484-1125 Hours: Mon.-Fri. 11-5; Sat: 10-5; Sun: 12-4

Newport Furniture

Wood Cedar Chest Boxes - Oak

100% U.S.A. Hand Made • Made of wood composites and cedar (with cedar lining). The aged cedar wood has developed a rich basecoat color. Chests have suppressed-metal double hinges, and are 42"X18"X20" in high gloss.

FULLY WARRANTEED.

For Orders & Detailed Information Phone: 302-999-8225 FAX: 302-999-8225

Newport Furniture

420 E. Ayre St., Newport, DE 19804

REPAIRING • HAND-STRIPPING

REFINISHING • CUSTOM UPHOLSTERY 36% OFF Residential or Commercial • Call for FREE ESTIMATE



JUDY LEVY

EILEEN SCHWARTZ

The First Ladies of Real Estate\*



8 LANTERN LANE, DARTMOUTH WOODS \$137,500 Spacious split in top notch condition with a family room and a play-room. Wonderful back yard. Hotline 2519

65 PALADIN DRIVE, PALADIN CLUB \$118,900 3 story upgraded end unit with master bedroom suite, living room with fireplace and much more! Hotline 4304

1030 OLD FORGE ROAD, MEADOWS OF WILTON \$79,900 Great two bedroom townhome with finished lower level. Don't rent, just call us!



1401 PENNSYLVANIA AVENUE, UNIT 514 \$39,900 Mint condition condo, with updated kitchen and bath, beautifully carpeted and priced just right.

\*Ranking in the TOP FIVE PERCENT of all RESIDENTIAL AGENTS IN THE NATION.

Call 429-7379





**IL PORTICO**

1519 walnut street  
philadelphia  
pennsylvania 19102  
215 / 587 / 7000

Lunch M to F 12 to 3  
Dinner M to Th 5 to 11  
F & S 5 to 12  
Sun 3 to 10

Valet Parking at dinner

CUCINA TOSCANA  
RISTORANTE ITALIANO

FOR VALENTINE RESERVATIONS,  
CALL NOW.

Dining  
and  
More

New  
Castle  
Farmers  
Market

Come out for a day of family  
fun and shopping bargains  
**DON'T MISS  
DELAWARE'S  
BIGGEST & BEST  
FARMERS MARKET  
& FLEA MARKET**

Voted Best of Delaware

FRI. & SAT. 10 A.M.-10 P.M.  
SUNDAY 10 A.M.-6 P.M.  
Rt. 13 (across from Wilmington Airport)  
New Castle, DE 328-4101

for the REAL taste of ITALY

Right Here in WILMINGTON...  
dine at

**Ristorante Portobello**

where Master Chef Allesandro  
will excite you with his  
SUPERB ITALIAN CUISINE

On Sunday, Jan. 19th  
our

**ROMAN FEAST**

Promises countless courses of delicious  
Southern and Northern Italian Dishes

**FIXED PRICE: \$50**

(LIQUOR AND GRATUITIES  
NOT INCLUDED)

- Pasta prepared to order always
- Decadent Desserts Always

~ WINE ~ SPIRITS ~ CHAMPAGNES ~

**Ristorante Portobello**

303 East Lea Blvd., Wilmington, DE 19802  
(302) 761-9200

**Vincente's**

Fine Northern Italian Cuisine  
Veal, Steak, Seafood, Lamb  
Home of the "Walking Menu"

Visit our new location  
Independence Mall  
1601 Concord Pike  
Wilmington, Delaware 19803

Chef Vincent J. Mancari  
Chef Daniel Mancari  
Chef George Keenan  
Chef Valerie Smook

Serving Lunch M-F 11-4  
Dinner M-Sat. 4 to 10  
**(302) 652-5142**

**RESERVATIONS**

**SUGGESTED FOR VALENTINES DAY**

Start Something Brewing  
At The Office



Take-A-Break and The Coffee Beanery now bring the finest coffees from around the world  
right into your office.

Great for client meetings, special occasions or a special treat for your employees.  
A treat they will appreciate and you can afford.

For Coffee Beanery coffee in your office, call

**TAKE-A-BREAK**

Food & Refreshment Services  
**(302) 658-8571**

VISIT OUR NEW ADDITION (with a Piano Bar Fri. & Sat.)



**TiraMisu**  
RISTORANTE

ROMAN ITALIAN JEWISH CUISINE

We Suggest Timely  
**GIFT CERTIFICATES**

**VALET PARKING  
AVAILABLE**

528 South 5th Street, Philadelphia, PA 19147  
For Reservations Call: (215) 925-3335  
Open 7 Days A Week For Dinner,  
Weekdays For Lunch

Call Now For Valentine Reservations

**WHY THE FOX POINT GRILL?**



- ★ New American Cuisine  
From Game to Gourmet
- ★ All Breads and Pastries  
Baked on Premises
- ★ Easy Access from  
I-495 - I-95 or Downtown
- ★ Plenty of Parking

Serving Lunch  
Mon.-Fri. 11:30-2:30

Dinner Daily  
4:30 p.m.-10 p.m.

**RESERVE NOW**  
for our  
**Thursday, Jan. 23rd**  
**BEER DINNER**  
Please call for details

321 E. Lea Blvd. Wilmington, Del. (302) 762-5655



# Music and Theatre

**ENTIRELY SOPHIE  
PLAYHOUSE THEATRE  
MARCH 7-16, 1997**

Sophie Tucker was one of the great entertainers of show business. She had the biggest brassiest voice of all and the beat in her voice made hearts pound in syncopated time.

Recreated on stage in this new revue-sical, you will hear the choice selection of the spicy night club songs that made her famous. You will hear her belting *Darktown Strutter's Ball*, the hilarious *The Older They Get, The Younger They Want 'em*, and her famous signature song, *Some Of These Days*. Always proud of her Jewish background, you will hear, of course, the original version of *My Yiddishe Mama*.

This must see production is presented on stage, not just through the voice of one actress, but many.

## ENTIRELY SOPHIE



Sophie Tucker - She's BIGGER & Better Than ever!

**March 7 - 16, 1997**

Recreated on stage in this new revue-sical, you will hear the choice selection of the spicy night club songs that made Sophie Tucker famous. Hear her belting *Darktown Strutter's Ball*, the hilarious *The Older They Get, The Younger They Want 'em*, and her famous signature song, *Some Of These Days*, and the original version of *My Yiddishe Mama*.



PRE-THEATRE BUFFET AVAILABLE IN THE Grill FOR DINNER RESERVATIONS CALL (302) 594-3100



prices range from \$39 - \$47

Call (302) 656-4401 or Toll Free (800) 338-0881

**JANUARY 24-FEBRUARY 2, 1997**

## Presenting

**HAVING OUR SAY**

*Having Our Say*

The Delany Sisters' First 100 Years

The story of a century of American history, family and love. Based on the autobiography of the 100-year old Delany sisters.

**PHONE ORDERS NOW  
(302) 656-4401  
(800) 338-0881**

Tickets from \$29-\$43



The National Bestseller is Now America's Best-Loved Play!



AT THE HOTEL DU PONT

DU PONT BUILDING • WILMINGTON, DE 19801



**A Most Uncommonly Entertaining Dance Band**

Classical to Contemporary, Big Band to Broadway, Motown to Top 40 and more... The Right Touch for All Occasions.



610-296-2626

Elegant! Energetic! Exciting!

## Sid Miller ORCHESTRA



The best in traditional and contemporary music played with excellence, authenticity and enthusiasm.

CALL (215) 389-7750

11 BALA AVE., BALA CYNWYD, PA 19004

1997 UJA-Federation Campaign COMMUNITY EVENT ☆ FAMILY CONCERT  
A concert by the Grammy Award winner and Jewish folksinger

## Doug Cotler

February 9, 1997 - Congregation Beth Emeth 7:30 p.m.  
Tickets: adults - \$10 in advance (\$12 at door); children - \$5



Event Chairpersons: Ruth Weinstein & Barbara Yalisove

For tickets, call the Jewish Federation of Delaware at (302) 427-2100 or send a check and your return address to:

The Jewish Federation of Delaware, PO Box 2193, Wilmington, De 19899-2193

Authorized Ticket Agency For The Delaware Valley

## tickettown B & B

Tickets available to special events at... THE SPECTRUM, CORE STATES CENTER, FLYERS, SIXERS, AND CONCERTS

322 NINTH ST. PLAZA • WILMINGTON, DE 19801  
TELEPHONE: (302) 656-9797 OR (610) 459-3283  
TERRY SKLAR



# Business & Professional Directory

**We Made it to the Top**  
(of INC Magazine's Top 500 List)

The Area's  
Fastest Growing  
Personnel  
Service

Permanent &  
Temporary  
Personnel In  
All Fields



Thanks to Our Employees and their Employers for Your Support.

**NETWORK**  
PERSONNEL

It Really *is* Who You Know.

Wilmington: 656-5555 • Newark: 832-2222



JUDITH B. GILBERT  
SALES REPRESENTATIVE

**TRANSAMERICA**  
OCCIDENTAL LIFE

**FIXED and**  
**VARIABLE**  
ANNUITIES  
SECOND-TO-DIE  
INSURANCE  
LONG TERM CARE

Bellevue Park Corp. Center  
300 Bellevue Parkway  
Suite 190  
Wilmington, DE 19809-3704

(302) 798-3771  
(800) 633-8584 toll free



**PHILIP BERGER**

Weichert "Presidents" & "Ambassadors" Club

**Weichert,®**  
Realtors

OFF.: 302-478-3800 • RES.: 302-764-8384  
Professional, competent, "enthusiastic"  
real estate service since 1969



ASK FOR A LIST OF REFERENCES.



**DANIEL W. FINK, D.D.S.**  
FAMILY DENTISTRY

TALLEYVILLE TOWNE SHOPPES  
3650 SILVERSIDE ROAD  
WILMINGTON, DE 19810

TELEPHONE  
(302) 479-7111

(302) 998-2060

**KELMAN CHIROPRACTIC**  
CENTER, P.A.



MICHAEL P. KELMAN, D.C.  
3722 Old Capitol Trail  
Wilmington, Delaware 19808

Family Practice of Chiropractic

## NEED AN ELECTRICIAN

Call us, we would be pleased to answer all of your questions. Electrical services in your Home, Office, Store and Factory.

You will sleep better at night when you know it's wired right.

**DELCOLLO ELECTRIC INC.**

Dependable Service Since 1975 • Licensed & Insured  
Call 994-3400



**Barbara K. Levy**  
Realtor

Licensed Broker in DE, PA, MD

"A satisfied client is  
my #1 priority"

Phone: (302) 529-2626  
(302) 475-6786

EMAIL:  
BLEVY78108@AOL.COM



**BAYSHORE**

**SAVINGS & SELECTION!**



1997 FORD  
WINDSTAR

WE SPECIALIZE IN COMMERCIAL FORD AND MITSUBISHI TRUCKS!

Call Sandye or Jerry  
Turnauer for  
personal service.

SALES HOURS:  
Mon.-Fri. 7:30am-9pm; Sat. 7:30am-5pm  
SERVICE HOURS:  
Mon.-Fri. 7am-MIDNIGHT; Sat. 7:30am-4pm

Route 13 & I-495, New Castle, DE  
(302) 656-3160

<http://www.ford.com/dealers/bayshore>

**THE**  
**SPEECH**  
**CLINIC**

INCORPORATED

Providing  
Comprehensive  
Speech  
Language  
Therapy Services

**999-0702**

5147 W. Woodmill Drive,  
Suite 21  
Wilmington, DE 19808



**BERNIE**  
**FREIMARK**  
1995  
SALES  
ASSOCIATE  
OF THE YEAR

**Gristmill Woods, 6 Gristmill Court \$229,900**  
Upgraded 11-year-old Colonial -- granite countertops, jacuzzi tub, spacious tiered deck, finished basement, security system, etc.

OPEN HOUSE - Sun., Jan 12th - 1-4 pm.

**Brandywine Hills, 4301 Washington St. Ext. \$167,900**  
Stately stone center hall Colonial -- features four bedrooms, 2.5 baths with new roof, gas heating system and central air. Best buy in area -- compare! \$5000 allowance for updating.

**Greenview, 3301 Cross Country Dr. \$162,900**  
Upgraded 4 bedroom, 2.5 bath Colonial, screened porch, 2 car garage, new kitchen w/oak cabinets, new bedroom with whirlpool, family room with fireplace.

OPEN HOUSE - Sun., Jan 12 - 1-4 pm

**Weichert,®**  
Realtors



"Let me put my experience to work for you."

Selling your home? Call **BERNIE**

Brandywine Office

3302 Concord Pike • 478-3800



Let's talk ... Camp '97!

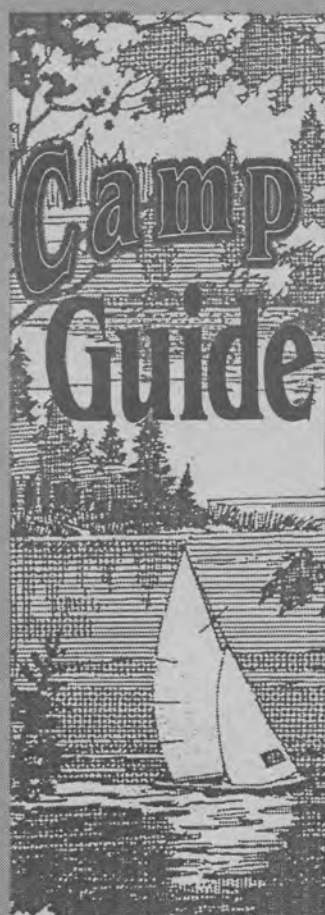
Call for FREE Personal Guidance Brochures • Video

**Camp Connection**  
POINTING YOU IN THE RIGHT DIRECTION

Never & Fee or Obligation

CALL TODAY  
Donna & Ed Okin  
1-800-775-6508

- Sleepaway Camps
- Specialty & Sport Camps
- Teen Tours
- Pre-College Programs
- Israel Tours
- Community Service Programs



It doesn't get any better than this

fun • challenge • independence • responsibility • growth • and the joy of an authentic Jewish sleep-away camp experience

This summer give your child the best. A sleep-away camp that nurtures individual success. Encourages friendships. Expands horizons.

It's all there at the three New Jersey Y Camps in Milford, PA — Camp Nah Jee Wah for grades 1 - 6. . . Cedar Lake Camp, grades 7 - 9. . . and Teenage Camp, grades 10 - 11. An exciting fun-filled world designed for your child. Supervised by caring, mature professionals.

For more information or for a video, call 201 575-3333.

New Jersey YM-YWHA Camps  
21 Plymouth Street  
Fairfield, N.J. 07004



Dietary Laws Observed

If you had seen us first...



you wouldn't be looking for us now.



PINEMERE HAS EVERYTHING YOU LOOK FOR IN CAMP

... AND MORE. COME SEE.

For further information contact:  
**PINEMERE CAMP**  
Stroudsburg, Pa.  
WINTER ADDRESS  
438 W. TABOR RD., PHILA. PA 19120  
(215) 924-0402  
ROBERT H. MINER, Executive Director

INTRODUCTORY OFFER \$1350 for one session

Tired of Reading the Fine Print?

Camp Ramah in the Poconos has the job you've been looking for!  
We have openings in the following areas for YOU!

- Jr. and Sr. Counselors
- Specialists: WSI, Canoeing, Sailing/Windsurfing, Sports, Gymnastics, Judo, Camping, Arts and Crafts, Woodworking, Photography, Nature, Radio, Music.
- RN

For information call (215) 885-8556  
E-Mail: CRP101@AOL.COM



CAMP MOSHAVA

It's What Judaism Is All About!

Camp Moshava provides your child with a unique camping experience. Located near Bel Air, Maryland, the Camp's kibbutz-like, Zionist atmosphere offers a host of activities, programs and scouting events.

From arts and crafts to Hebrew singing and dancing, to a full sports program, campers grow physically, emotionally and intellectually.

Camp Moshava is truly an adventure in creative Jewish camping!

Habonum Dror Camp Moshava

FOR MORE INFORMATION  
301/593-7533 • 800-454-2205

- ACA Accredited Camp
- Israeli/Judaic culture
- Informal Hebrew education program
- Arts and crafts
- Nature study
- Sports - basketball, baseball, etc.
- Swimming - 2 pools
- Boating on lake
- Campfires
- Overnights and outings
- Shabbat observance
- Kosher kitchen
- College-age trained counselors

They say that you make friends for a lifetime...



Both Camps are located in the beautiful mountains of Western Maryland



...just ask anyone who's been there!

Camps AIRY & LOUISE  
Serving Jewish Youth For Over 70 Years. It's a way of life

Call: 410-466-9010  
Fax: 410-466-0560  
E-Mail: airlou@airylouise.org.

Special Beginner Session  
We've developed a special session for kids who haven't been before!





# PANIM EL PANIM

(Face to Face with JFD People)



## Julie Silver

Continued from page 14

- soulful and spiritual, uplifting and charming, or sweet, fun and endearing. Her music is easy to sing, easy to remember and most importantly, touches people with its beauty and simplicity. Her 1992 debut album, "Together," is full of family music and contains the popular favorites, "Apples and Honey" and "I Am All Around." Her sec-

ond album, "From Strength to Strength" includes the much loved "Sim Shalom," and the energetic "Chazak Chazak" which has achieved success throughout North America.

Doug Cotler is a Grammy Award winning folksinger who will be performing for The UJA/Federation Campaign Community Event - Family Concert.

Call Temple Beth El at 366-8330 to reserve for the lunch. Call 427-2100 for Doug Cotler tickets.



## 1997 UJA FEDERATION CAMPAIGN

### CAMPAIGN SCHEDULE

- Jan. 24, 1997  
Southern Delaware Federation Shabbat
- Jan. 31, 1997  
Federation Shabbat
- Feb. 8, 1997  
Community-Wide Event with singer Doug Cotler
- Feb. 9, 1997  
Super Sunday
- Feb. 23, 1997  
Hillel Students Campaign Event

UJA FEDERATION CAMPAIGN

No gift touches more lives  
Community Campaign Administered by the Jewish Federation of Delaware

## Harry Cohen

Continued from page 1

Cohen and his committee raised \$27,000 for the Jewish National Fund and Judge Morris Gothenburg of New York, JNF President, came to Delaware to present the deed for a 250 acre colony in Israel.

By 1953 when he succumbed to a stroke, he had already accumulated his fortune. Because of the Foundation he established, our community continues to thrive today.

Sadie Toumarkine continues her father's legacy and has been a dedicated leader of the Delaware Jewish community for many years.

## Income Tax and Accounting Services ... Personal, Business and Corporate

### JOEL E. PANITZ, CPA

2405 Newton Road  
Wilmington, DE 19810

(302) 478-4726

Sport Steel Toe



Work Leisure

## Red Wing Shoe Store

Sizes 6-16

Bob Kralovec

Widths AAA-EEEE

3206 1/2 Kirkwood Hwy.  
Prices Corner S/C  
Wilmington, DE 19808

302-994-1210 (W)  
302-475-6231 (H)

## joel h. shoulson

the only second generation fully approved full-time, professional



serving your community since 1951

1-800-700-JOEL (5635)  
610-896-7750

please call for videotape and information

## Herrmann

Continued from page 5

young people. "I think," he says without pomposity "that my friends look up to me and wish that they too could do the same."

Doug attributes his social conscience to his parents and late grandfather, Supreme Court Justice Daniel Herrmann. Recalling his upbringing, Doug notes, "we are a very close, community-minded family. I really was raised with family values."

Needless to say, Rabbi Grumbacher of Temple Beth Emeth where Doug celebrated his Bar Mitzvah, is proud of his young congregant. "Doug's sense of mitzvah was, and continues to be, in the best tradition of tzedakah. More young people should follow this lead, thinking about others unselfishly and doing what they can in such a warm spirit."

Currently a junior at the University of Virginia, Doug is a cognitive science major, but is thinking of following the family tradition by going into law.

The Jewish Community of Delaware Endowment Fund manages over \$5 million in endowment funds for the members of the Delaware Jewish community. Distributions from the Fund benefit both Jewish and non-Jewish agencies throughout Delaware and around the world. Donors to the Endowment Fund receive significant tax benefits in addition to the warm feeling of contributing to the betterment of our world. For more information on how you can create an endowment fund, please call the Director of the Fund, Marc L. Shandler, Esq. at 427-2100, ext. 19.

## MODERN MARRANO TRUDY ALEXU

To Speak at Federation Shabbat at Congregation Beth Shalom

on January 24, 1997 at 8:00 pm and January 25, 1997 at 4:00 pm

All are welcome to join in this Shabbat experience in association with the 1997 UJA/Federation Campaign



## SUBARU OUTBACK

Half Sport Utility. Half Car. All Adventure.

Ever since the first SUV hit the road drivers have been asking for the safety, ride, gas mileage and comfort of a passenger car combined with the performance and versatility of an off-road vehicle. Well, now it's here! Experience the thrill of the Subaru Outback.



Delaware's Exclusive Subaru Dealer.

#1 in Subaru Sales in Delaware for 16 years running  
255 E. Cleveland Ave.,  
Newark, DE 19711  
302-453-9900

## EXPLORE RETIREMENT OPTIONS

Affordable Rental Retirement Apartments



Join us for a tour of our one and two bedroom apartments complete with full kitchens, washers & dryers, 24 hour security and no entry fee. Call our Marketing Office today to schedule your tour.

(302) 798-3500



## Captain's Deck

A RENTAL RETIREMENT COMMUNITY

7807 Governor Printz Blvd. \* Claymont, DE 19703

THE ROBINO RETIREMENT COMMUNITIES  
CAPTAIN'S DECK Southpark Terrace



Harry David Zutz Insurance, Inc.

Committed to Creative Insurance and Risk Management Solutions for More Than 50 Years

Complete insurance coverage and underwriting facilities for:  
• Business and Personal Insurance  
• Marine • Surety bonds  
Specialists in unusual risks

PLI Professional Liability Insurance, Inc.  
an affiliate of Harry David Zutz Insurance, Inc.

Comprehensive coverage for professionals of all disciplines

300 Delaware Avenue  
P.O. Box 2287  
Wilmington, DE 19899

Branch Office:  
#1 Seething Lane  
London, EC3N 4NH  
England  
Phone: 071-962-2003

(302) 658-8000



## ARTS • ENTERTAINMENT • BOOKS

## Words &amp; Music

## Doug Cotler's Flashing Dance to Jewish Folk Music

By STEVE COHEN  
The Jewish Voice  
Entertainment Report

Doug Cotler would be an accountant today — instead of a cantor and Jewish folk singer — if it hadn't been for the movie *Flashdance*.

Cotler had been working with a partner, Rich Gilbert, as a rock 'n' roll songwriter and performer and was becoming increasingly unhappy with that career.

In a field where partying, drinking and drugs were the norm, Cotler had come to realize "that wasn't where my life was at," as he told me last week. Newly married in the early 1980's and soon to have children, Cotler looked for a more wholesome and more stable occupation. He studied accounting while Gilbert took graduate work in psychology.

As 1984 began, Cotler passed his CPA exam and Gilbert got his doctorate. They decided to write a few more rock songs, then leave the music business. At that point, their "Manhunt" was accepted by the producers of *Flashdance* and was recorded for the film's soundtrack and record album.

Their story is similar to what happened to two other young Jewish songwriters in 1925. Richard Rodgers and Lorenz Hart

were about to forsake music and go into retail business when suddenly the Theater Guild put their "Manhattan" on stage and the rest is history.

Cotler and Gilbert made a fortune with *Flashdance* (industry insiders calculate it was in the neighborhood of a million dollars) and never wrote a rock song again. With his financial cushion, Cotler decided to do what he really wanted to do most — not accounting, but singing and composing Jewish religious music. He has succeeded amazingly well at it: He's the cantor of the 1200-family Temple Emanuel in Los Angeles, produces record albums and makes approximately a hundred personal appearances each year at select venues. His former partner is now chairman of the department of psychology at Loyola University.

Cotler had learned *hazzanot* from his father who was a cantor, and began substituting for him at age 14. As any cantor will tell you, it is the cantor's job — not the rabbi's — to lead the congregation in prayer. Doug filled that responsibility at his father's *shul* in Ventura, California.

Because Doug used the word *shul* instead of temple or synagogue, I presumed it was an Orthodox congregation. No, he

told me, it was Reform but included elements from the other branches of Judaism because it was the only Jewish house of worship in their county. "It was Orthoconsequence-Form," says Cotler, "or maybe ReConsOdox."

Young Cotler studied in Israel at the Institute for Youth Leaders, but most of his education was secular. He graduated St. John's College in Santa Fe with a degree in philosophy and literature after studying the great masters in the original languages of German, French, Greek and Latin.

His Jewish compositions are melodic, engaging and intelligent. Cotler says that he tries to make his songs work on four levels, the way the mystics use the four-letter acronym *pardes* — P, R, D, S.

Cotler's first level is *pashat*, telling a simple story. His second level is *remez*, the allegorical story behind the original tale. Then comes *drash*, or interpretation, and finally *sud*, the secret deepest meaning. "It's like a Talmudic conversation," says Cotler, "where I take several sources and interweave them. I don't expect audiences to get every meaning on first listening, but I try hard to put all of that into most of my songs."

Tickets for Doug Cotler's per-

formance at 7:30 p.m. February 8, 1997 at Beth Emeth are available through the Jewish Federation of Delaware, the Jewish Community Center and some Delaware synagogues. Tickets for adults are \$10 in advance and \$12 at the door. Children's tickets are \$5. For more information call 427-2100

or send a check and a note with your return address to The Jewish Federation of Delaware, P.O. Box 2193, Wilmington, DE 19899-2193. The Community Event - Family Concert benefits the 1997 UJA-Federation Campaign, administered locally by The Jewish Federation of Delaware.

## Youth Choral Group Rehearsal for the Doug Cotler Concert

On February 2, 1997 at Adas Kodesch Shel Emeth, all Delaware area youth choral groups are invited to attend a joint rehearsal to prepare songs for the Doug Cotler performance on February 9. Doug Cotler, a Grammy Award winner and folksinger, will be performing at 7:30 p.m. at Congregation Beth Emeth for the 1997 UJA/Federation Campaign Community Event - Family Concert. Young Jewish Delawareans are preparing with their synagogues or with Albert Einstein Academy to sing along with Doug on several songs.

Youth choral group leaders are invited to RSVP to Cantor Daniel Leeman of AKSE at 762-2705. Youth choral group members should check with their synagogue

or day school to make plans to attend the rehearsal on February 2. Young singers from AKSE, Albert Einstein Academy, Beth Emeth, Beth El, Beth Shalom, and Beth Sholom, will have the opportunity to participate.

The Doug Cotler concert on February 9 costs \$10 for adults for advance purchases (\$12 at the door) and tickets for children are \$5. Proceeds, if any, benefit the 1997 UJA/Federation Campaign. To purchase tickets call (302) 427-2100 or send a check in the ticket(s)'s amount, along with a note stating the number of requested tickets and your return address to: The Jewish Federation of Delaware, P.O. Box 2193, Wilmington, DE 19899-2193.

## Is Your Sign Looking a Little Run Down?



Then you are lacking a very important image for success. Having a sign that is in ruins or misplaced could cost you a lot of business over the long term.

At Tupp Signs we have built and designed signs that helped businesses like yours to prosper. And we've done that for over 64 years.

Call 322-1600

**TUPP  
SIGNS**

457 E. New Churchman's Rd.  
New Castle, DE 19720



The entire staff at

## ST. FRANCIS HOSPITAL

extends heartfelt gratitude to our many friends in the Jewish community who have so thoughtfully volunteered their services to our hospital throughout the year.

AND ESPECIALLY TO THE FOLLOWING  
VOLUNTEERS WHO ENABLED MANY OF OUR  
EMPLOYEES TO SPEND THE CHRISTMAS HOLIDAY  
WITH THEIR FAMILIES:

Cindy, Robbie, Tad and Amanda Udell,  
Debbie Grossman, Marvin and Sue Cytron,  
Naomi and Chuch Klein, Helen and Reggie Schmidt-Sutton,  
Henry, Susan, and Danielle Gutter, Margo Jaffee,  
Rachel Zahn, Ann, Doug, Joe and Susan Nicholson, Joe Rhodes,  
Joyce, Andrew, Jonathan, Charlie, Greg, Nancy and Karen Kauffman,  
Hinda and Jack Fink, Barbara & Stu Seigell  
Barbara, Mitch, and the Guttenplan Children



St. Francis Hospital

7th and Clayton Streets, Wilmington, Delaware 19805  
302-421-4100



# SYNAGOGUE LIFE

## Julie Silver at Temple Beth El on Feb. 8<sup>th</sup>

See Julie During the Day and Doug Cotler at Night

Julie Silver will be leading Shabbat services beginning at 10:00 a.m. followed by lunch and a mini-concert from 12:45-1:45. Celebrate this wonderful musical opportunity to meet Julie in the morning and hear Doug Cotler at 7:30 p.m. at Congregation Beth Emeth.

Singer, songwriter, musician and cantorial soloist Julie Silver is the new rising star in contemporary Jewish music today. With the release of her third collection of original songs, "Walk With Me," Julie has come to be recognized as one of a handful of top performers in this fast-growing field. Her music is a direct reflection of who she is — a young woman eager to express her Judaism in an artistic and profoundly unique way.

Julie writes both liturgical-based music as well as new American Jewish ballads. Her style is diverse

Continued on page 12



## "Raising Jewish Kids in a Non-Jewish World" AKSE Men's Club Brunch Feature

On Sunday, January 26, 1997, at 9:30 a.m., the A.K.S.E. Men's Club, in conjunction with the Adult Education Committee, will feature Janice L. Weiss, a licensed clinical social worker employed by Jewish Family Service of Delaware, to speak on the topic of "Raising Jewish Kids in a Non-Jewish World," according to Robert S. Weiner, President of the A.K.S.E. Men's Club. This program is the last program in a four-part jointly sponsored series presented by the A.K.S.E. Adult Education Committee and the A.K.S.E. Men's Club focusing on Family Jewish Education.

At the Jewish Family Service, Janice Weiss provides individual and couples counseling and offers workshops. Additionally, she provides counseling services through a joint early intervention program with West End Neighborhood House and JFS designed to serve at risk adolescents and their families. Previously, Ms. Weiss was employed by Tressler Centers of Delaware in the Community Counseling and Children's Sliding Fee Scale Programs, serving individuals, couples, children, families and groups. She also worked in Tressler's Brandywine Program as a Crisis In-

tervention Specialist. Ms. Weiss received a Master of Social Service Degree from Bryn Mawr College, Graduate School of Social Work and Social Research. She received a Bachelor of Arts Degree in Psychology from the University of Delaware.

Ms. Weiss explains how we as Jewish parents would like our children to find meaning and substance in Jewish values and traditions. However, time constraints and secular commitments compete with Jewish education. Sports, school plays, academic and career goal pressures leave little additional time in our children's lives. These dilemmas produce real concerns for many of today's Jewish parents. Resolving these issues is not easy. Parents play as important a role as does formal Jewish education in helping our children develop a Jewish identity. This discussion will explore ways parents can provide a sense of Jewishness in their children's family, home and school environments and foster a commitment to Jewish education in today's fast paced and demanding world.

The A.K.S.E. Men's Club monthly Sunday Brunch is open to the pub-

lic. Brunch is scheduled at 9:30 a.m. and the program is from 10:00 a.m. to 11:00 a.m. The cost is \$3.00 for an all-you-can-eat deluxe Sunday brunch. Reservations for nonmembers are suggested and can be made by contacting the A.K.S.E. office at (302) 762-2705.

## Coffee, Conversation, Controversy

The Sisterhood of Congregation Beth Emeth will meet on Tuesday, January 21, 1997, 12:30 to 2:30 p.m., to view the video "Half the Kingdom." It is an exploration by several women representing all branches of Judaism of their own relationship to the religion. Yvette Rudnitzky will lead a discussion of women's changing role in Judaism.

Coffee and cookies will be served at the meeting which will be held in the Temple Lounge. Anyone interested may attend. Please make your reservation with Betty Chambers, 764-0168.

### Schoenberg Memorial Chapels



In the hallowed tradition of our faith...

a dignified setting with reverence for customs and observances in strict accord with family wishes.

519 Philadelphia Pike  
762-0334

### CREATE A LASTING MEMORY Plant Trees in Israel



- A Circle of Trees \$100
- A Ring of 5 Trees \$50
- Individual Tree \$10

A Living Link to the Land of Israel

CALL (302) 655-5995

MARYLAND/DELAWARE REGION  
4 Reservoir Circle, Baltimore, MD 21208



ALAN GOLD

BOB GOLD

### B. Reibstein Memorials Art Monument Company

1603 Jessup St.  
Wilm, DE 19802  
(302) 575-1450

Since 1895

1869 Cottman Ave  
Philadelphia, PA 19111  
(215) 725-2200

Delaware's Only Jewish Owned and Operated Monument Dealer  
Manufacturing and Showroom in Delaware

## OBITUARIES

### BERNARD I. COHEN

Bernard I. Cohen, 74, of 2810 Baynard Blvd., Wilmington, died Thursday of a stroke in St. Francis Hospital.

Mr. Cohen was a Navy veteran of World War II and the Korean War. He was an admissions clerk at Veterans Affairs Medical Center, Elsmere, for 25 years, retiring in 1984. He was a member of Congregation Beth Shalom and its men's club. His wife, Sylvia Cohen, died in February.

Survivors include son, Mark S. of Pittsburgh; daughters, Carla Joyce Dinsmore of Elsmere, Marsha Susan Atkison of Brandywine Hundred and Barbara Judith Cohen of Wilmington; mother, Frances Cohen of Wilmington; brother, Jay of Jamesburg, N.J.; sister, Cydney Knies of La Quinta, Calif.; six grandchildren.

Contributions may be made to the Kutz Home, Wilmington 19809, or Congregation Beth Shalom, Wilmington 19802.

### HERMAN GREENSTINE

Herman Greenstine, 76, of Sunrise, Fla., formerly of Wilmington, died Dec. 30 of a stroke in Florida Medical South.

Mr. Greenstine, a Wilmington native, had owned Wilmington Tropical Aquarium on Governor Printz Boulevard. He was a Navy veteran of World War II. He was a life member of Deborah Heart & Lung Foundation. He moved to Florida in 1979.

Survivors include his wife of 50 years, Sylvia; son, Lonny of Sunrise; daughter, Rona Dugan of Collegeville, Pa.; sisters, Helen Gerstein and Doris Schneider, both of Florida; two grandchildren.

Contributions may be made to Deborah Hospital, in care of Mary Weinstein, 8602 Society Drive, Claymont, Del. 19703.

### MARJORIE SCOTT

Marjorie Scott, a passionate and effective fund-raiser for Jewish causes, charities, and other organizations, has died after a brief struggle against cancer. She was 68.

Scott, who owned Martha's Flower Shop in Miami Beach, made a national reputation as a professional fund-raiser in New Jersey and New York City before moving to Miami in 1991. There, she soon became an avid local leader for the United Jewish Appeal and the Jewish National Fund, for which she served on numerous leadership committees.

Scott's son, Larry Denburg of Wilmington, said his mother became interested in supporting Jewish causes in the late 1960's, when the family lived in New Jersey.

Scott was born Marjorie Adlerstein in 1928 in Irvington, a suburb of Newark. She grew up in Newark and later lived in the suburban towns of South Orange, West Orange, and Westfield. She lived in New York City until 1991, when she joined her mother, Rose Adlerstein, and her daughter in Miami.

During World War II, her father, a dentist, headed the dental clinic at Fort Benning, Ga. Marjorie did so well in school that she was admitted to the University of Georgia at age 16. She majored in psychology and English and earned her degree — and a Phi Beta Kappa key — at 18, her son said.

Her fund-raising resume is voluminous. She was a trustee of the Jewish Community Federation and Foundation in New Jersey and national

development director for the American Friends of Haifa University in Israel. She worked as both a professional and volunteer fund-raiser for synagogues, schools, and other organizations.

The United Jewish Appeal was her favorite, her son said: "She was asked to speak to potential contributors and to fund-raising staffs all over the country. She was an eloquent speaker."

Scott is survived by her mother Rose Adlerstein, sister Suzanne Schnog, son Larry Denburg, daughter Dorian Denburg, and five grandchildren, Eren, Noah, Rachel, Benjamin, and Asher.

A memorial service was held on December 17th. The family suggests that remembrances be made as donations to the Marjorie Scott Philanthropic Fund, which supports cultural and educational institutions. The address is in care of the Jewish Community Foundation of Metro West, 901 Route 10, Whippany, NJ, 07981.

### MINNIE WOLF

Minnie Wolf, 96, formerly of Green Acres, Brandywine Hundred, died Sunday, December 29 at Kutz Home for the Aged, Bellefonte.

Survivors include son, David of Philadelphia; daughters, Jonnie Harriet Elfman of Green Acres, Brandywine Hundred, Ruth Ravetz of Las Vegas and Rose Bour of San Clemente, Calif.; seven grandchildren and seven great-grandchildren.

Contributions may be made to The Deborah Heart and Lung Foundation, in care of Mary Weinstein, 8602 Society Drive, Claymont, Del. 19703.



# CALENDAR OF EVENTS

**Entries for the Calendar of Events are due on the Thursday deadline, published in *The Jewish Voice*. Copy should be typed and double spaced. Entries are preferred on 3 1/2" floppy disk or via E-mail. Please include day, date, time, place, brief description, and contact person.**

**Mitzvah Day** — Mark your calendars now for Beth Emeth's first ever Mitzvah Day on Sunday, April 13, 1997. Planned as a day of reaching out to those in need in the Wilmington area, Mitzvah Day will feature a range of diverse community projects suitable for all ages. Family participation is encouraged. Modeled after highly successful

community events in other congregations nationwide, Mitzvah Day is being arranged by Beth Emeth's Social Action Committee. Volunteers are needed. Call Connie Kreshtool at 654-4663 or Bonnie and Bryan Silbermann at 239-9448 for more information.

**Interfaith Support Group Meeting** — Dover - The Interfaith Support Group will meet on Wednesday, January 15, 1997 at 1:30 p.m. for lunch in Dover. This group provides a forum for anyone involved in or associated with an interfaith relationship. A facilitator, Lauren Pokras MSS, from Jewish Family Services will lead the group. This event is funded by the Jewish Federation of Delaware as part of their Jewish Continuity Outreach Project, and is scheduled to continue monthly through May 1997. Ms. Pokras describes the aim of the

program as twofold — "to consider the role of religion in interfaith issues and offer a Jewish perspective, and to offer support in clarifying personal meaning and values in order to come to personally acceptable decisions." She also stresses that the group is opened to couples in all stages of a relationship from dating to married to divorced. If you are interested in attending please call Art Bayuk at 734-5297 for reservations and location. Call Samantha Malinger at JFS, Wilmington, for a list of ongoing programs at 478-9411.

**Film** — The Sisterhood of Congregation Beth Emeth invites community to view the film, "Half the Kingdom" in the Temple Lounge at 12:30 p.m. on January 21. Yvette Rudnitzky will lead a discussion of women's role in Judaism. Coffee and cookies will be served. For reservations call

Betty Chambers, 764-0168.

**For The Elderly** — Every other Wednesday, "Empowering Workshops for the Elderly" at the B'nai B'rith House with Barbara Cohen, MSW. Call JFS, 478-9411 for more information.

**Torah Study in Newark** — Secrets of Existence, Mondays from 7-8:30 and 8:30-9:30 Talmud. Tuesdays at 7 p.m. - Rambam's Mishnah Torah at 8 p.m. - Introduction to Jewish Mysticism. Individual classes are also available. Call 455-1800.

**Volleyball** — Young Jewish Adults of Delaware (YJAD's) co-ed, noncompetitive volleyball league

continues every Wednesday night from 6:00 p.m.-8:00 p.m.

**Student Rabbi** — on January 18, Toba Spitzer, a 5th year student at the Reconstructionist Rabbinical College will lead services at Temple Beth El in Newark. Services begin at 10 a.m.

**AEA Programs** — Transition From Kindergarten at Albert Einstein for the parents of the students. Call Martha Frost at JFS at 478-9411.

**Coping Together Using Positive Discipline Techniques With Young Children.** Call JFS at 478-9411 for additional information.

http://www.jewsforjudaism.org

## THE JEWISH RESPONSE TO MISSIONARIES

To strengthen Jews against the growing Christian missionary threat, JEWS FOR JUDAISM, North America's full-time counter-missionary organization, is now offering the following books and tapes at excellent prices that include postage and handling.

- THE REAL MESSIAH - A Jewish Response to... \$7 Missionaries by Rabbi Aryeh Kaplan (106 Pgs.)
- JEWS & JEWISH CHRISTIANITY... \$6 By David Berger & Michael Wyschogrod (71 Pgs.)
- THE JEW & THE CHRISTIAN MISSIONARY... \$17 In Depth Biblical Refutations by Gerald Segal (371 Pgs.)
- WHAT EVERY JEW SHOULD KNOW ABOUT... \$8 MISSIONARIES • Exposed by Rabbi Benzion Kravitz (Tape)
- HOW TO ANSWER A CHRISTIAN MISSIONARY... \$8 Step By Step Refutations by Rabbi Michael Skobac (Tape)
- JEWS FOR JUDAISM COUNTER-MISSIONARY... \$54 SURVIVAL SEMINAR • By Rabbi Michael Skobac (12 Tapes)
- JEWS FOR JUDAISM'S COUNTER-MISSIONARY HANDBOOK • By Rabbi Kravitz... \*FREE (With Any Purchase)

CALL TO ARRANGE FOR A DYNAMIC SPEAKER OR A CONSULTATION WITH AN EXPERT COUNSELOR.

Send check to: JEWS FOR JUDAISM, P.O. Box 963, Skokie, IL 60076-0963 ☎ Phone Orders: (416) 789-2851 Chicago (708) 415-1874 • Toronto (416) 789-2851 • New York (212) 633-2128 • Baltimore (410) 652-0278 • Washington (202) 649-5474 • Los Angeles (310) 854-3381

## Tu B'Shevat

Continued from page 5

Begin with a cup of white wine or grape juice. This symbolizes the dormancy of winter. The blessing for the wine or juice is: *Baruch Atah Adonai, Eloheinu Melech Ha Olam, Borei P'ree Hagafen*. During the course of the seder you will progress through three more cups. Next, white tinged with red, symbolizing the beginnings of springtime and the earth's reawakening. The third cup, red tinged with white, symbolizes the full arrival of spring. The fourth and final cup is red, symbolizing the full glow of summer. The crops are growing and flowers are in full bloom. In the months to come, the harvest will provide many varieties of fruit for our delight and sustenance.

Divide your fruits into three groups and eat them between the cups of wine. The kabbalists created four categories to represent four ascending worlds of creation. In this system, the parts that can be eaten represent holiness, and the inedible represents the impure.

**Assiyah.** The first and lowest level, *assiyah* is our world of action and of physical reality. The hard external shell of nuts (and of people)

protects the fragile holiness within.

**Yetzirah.** The second level, *yetzirah* or formation, requires only partial protection. It is represented by fruits which have no external shell, but do contain an inedible inner pit such as dates, olives, peaches, apricots, plums and papayas.

**Beriyah.** At the level of *beriyah* or creation, there is no need for protection. Included in this category are fruits with small seeds and soft peels which can be completely eaten. This includes apples, pears, oranges, grapes, figs and all manner of berries.

**Azilut.** The highest level, *azilut* or emanation is beyond representation by fruit.

This is a highly symbolic scheme which can be understood on many levels. Feel free to adapt it to the levels of understanding of your children. If your children are older, you can recite Psalm 104 and some of the 15 Psalms of Ascents. Also, make sure to sing lots of songs about trees and fruit. Some typical songs include *Atzay Zetim Omdim*, *Loy Yisa Goy*, *Eretz Zavat Chalav* and *Hashkaydiyah Porachat*, but really, anything goes. JCC Children's Center preschoolers all know, "We're a

Family, and We're a Tree." By all means, add it to your tree seder. Or what about, "I Gave My Love a Cherry," or "Lemon Tree Very Pretty." Make it a game to see how many songs you can dream up. I definitely plan to take advantage of this opportunity. Among other songs, I intend to sing a Debbie Friedman version of *Etz Chaim Hi* that my daughter wouldn't permit me to use at her bat mitzvah!



(Karen Moss is a former editor of *The Jewish Voice* and a teacher at Adas Kodesch Talmud Torah.)

## WANTED - SALES REPRESENTATIVE

Jewish Voice Newspaper is seeking an Advertising Rep. Experience required, computer skills helpful but not essential.

Send Resume to:

Director, Jewish Federation

P.O. Box 2193

Wilmington, DE 19899

or call (302) 427-2100

## WANTED - FULL TIME DIRECTOR FOR HILLEL AT THE UNIVERSITY OF DELAWARE

Position entails administration of building, student program oversight, outreach to students, counseling, and budgetary responsibility. Applicant needs background in Judaic practices. Interviewing by February 10, 1997. Please send resume to: Gene Danneman, c/o Hillel Student Center, 47 West Delaware Avenue, Newark, Delaware 19711.

## NACHES

### Smith Birth

Muriel and Marvin Gilman are delighted to announce the birth of their grandson Matthew McCloud Smith. Matthew was born on December 5, 1996 and weighed 7 pounds and 14 ounces. The proud parents are Martha and Dr. Greg Smith. Big brothers are Ryan and Brett.

### Topkis-Rockhold

Charles and Iris Topkis of Aurora, Colorado (formerly of Wilmington, DE) announce the engagement of their daughter, Nancy Beth Topkis, to Kevin Rockhold, of Aurora, Colorado.

Beth is the granddaughter of Naomi Hyde of Wilmington, DE (and the late Nathan Hyde) and Jack and Evelyn Topkis of Boca Raton, FL (formerly of Wilmington, DE).

An August 1997 wedding is planned.

### Levitt Exhibit

Irv Levitt, member of the Dover Art League, is the featured artist of the month. His exhibit entitled "Past and Present Obsessions in Oil," features 23 paintings from various periods of his artistic life.

Irv is a past president of Congregation Beth Sholom in Dover, and he served as the state JCRC chair for the Jewish Federation of Delaware.

Currently he is a member of the Industrial Accident Board and is active in community and political affairs. Former manager of the Social Security offices in lower Delaware, Irv is a frequent speaker and writer on senior issues and health care.

Irv has lived in Dover with his wife Phyllis for the past 31 years.

### Moyer-Stroock

Meriam and Lee Moyer are pleased to announce the engagement of their daughter Jenica Leron to William Thompson Stroock, son of Mary and Bill Stroock of Peekskill, N.Y. Jenica is a student at the University of Delaware and William is attending American University in Washington, D.C.

## ISRAEL BONDS

For sale, reinvestment and redemption information call:

1-800-752-5671

# K

THE KUTZ HOME

Caring for our elders with the reverence they deserve

- Medicare and Medicaid certified
- 24-hour skilled nursing care
- Physical rehabilitation services
- Beauty parlor
- Kosher meals and snacks
- Sabbath and holiday services

Please call Sheila Mensch at (302) 764-7000

The Milton & Hattie Kutz Home, Inc.  
704 River Road • Wilmington, DE 19809



# “Finally, A Managed Care Medicare Plan That Gives Me The Freedom To Use Out-Of-Network Doctors And Hospitals, Without A Referral!”

## Introducing the U.S. Healthcare Golden Choice™ Medicare Plan option.

Our new Golden Choice Medicare Plan option gives members more flexibility to visit doctors or hospitals outside the network, without a referral. With this option, members share the cost of the out-of-network care through a deductible and coinsurance.\*

With the Golden Choice Medicare Plan option, you may opt to remain in the network. When you do, your benefits are the same as the standard U.S. Healthcare Golden Medicare Plan™, with no deductibles or coinsurance and virtually no paperwork.

You'll be impressed by the size of our network as well as the quality. In all U.S. Healthcare® markets combined, we have over 54,000 family doctors and specialists and 440 hospitals. What it all adds up to is choice. In- or out-of-network, the choice is yours.

U.S. Healthcare is holding free informational meetings in your neighborhood. **Call 1-800-856-2700 for a list of meetings and more information.**

**Call for a personal appointment or to reserve space at an upcoming meeting:**

**1-800-856-2700**



Don't miss out! Make plans to attend one of the following U.S. Healthcare Golden Medicare Plan meetings to be held this month.

### **Claymont**

**Wilmington Hilton**  
I-95 & Naamans Road  
Wednesday, Jan. 10, 10:30 a.m.  
Thursday, Jan. 18, 10:30 a.m.

### **Newark**

**Christiana Hilton**  
100 Continental Drive  
Wednesday, Jan. 17, 10:30 a.m.  
Monday, Jan. 29, 10:30 a.m.

### **Wilmington**

**Hercules Country Club**  
Route 48 & Hercules Road  
Tuesday, Jan. 16, 10:30 a.m.

### **Wilmington**

**Riverside Hospital**  
Medical Arts Complex  
Conference Center  
700 Lea Boulevard  
Tuesday, Jan. 16, 2:30 p.m.  
Wednesday, Jan. 24, 2:30 p.m.

Open to Medicare-eligible individuals living in the state of Delaware. U.S. Healthcare Medicare has continuous open enrollment.

\*You may also need to file claim forms. You must continue to pay your Medicare Part B premium. Current U.S. Healthcare members: see your member handbook for specific exclusions, limitations and copayments. Member precertification is required for out-of-network hospitalization and certain other services. A federally qualified HMO with a Medicare contract. © 1996 U.S. Healthcare, Inc.