

The JEWISH VOICE

PUBLISHED BY THE JEWISH FEDERATION OF DELAWARE
101 Garden of Eden Rd., Wilmington, Delaware 19803

Vol. 21, No. 24

Heshvan, 5748

November 13, 1987

36 Pages

Delaware Jewish Community To Join March on Summit II December Sixth

Hundreds of Delawareans are expected to join the thousands expected to demonstrate on behalf of Soviet Jewry December 6th in Washington, D.C.

The demonstration is scheduled on the eve of Summit II, between President Ronald Reagan and Soviet leader Mikhail Gorbachev.

Delaware Jewish Federation President, Stephen Herrmann, said, "Mr. Gorbachev is coming here to discuss efforts towards peace with President Reagan. We wish those talks well. Yet, the fundamental component of bi-lateral peace is trust."

Herrmann added, "The USSR can demonstrate its willingness to keep its word by relaxing its harsh restrictions on emigration. It has promised to do so. The Kremlin must be held to that promise."

Rally organizers estimate that a quarter of a million people will meet in Washington, Sunday December 6th, to express their demands.

Buses and trains have been chartered by Philadelphia and New York organizers. Boston groups, along with contingents from the South, Midwest and far West have chartered special flights to the capital.

Buses from Delaware will leave at 9 AM December sixth. They will return immediately after the demonstration.

Ida Nudel, Vladimir Slepak, Natan Sharansky, Uylie Edelstein, Misha Kholmiansky and Elie Wiesel will speak.

Larry and Francia Isakoff are the Delaware Organizers for the December sixth rally in support of Soviet Jews at Summit II. Larry Isakoff said he hoped other Jewish organizations, religious schools, and their administrators would reschedule events set for that date to another time, so everyone who wants to attend the rally is free to come.

The mobilization is expected to be the largest Jewish demonstration ever held in Washington, according to Jacqueline Levine, chairperson of the Washington Mobilization and former chairperson of the National Jewish Community Relations Advisory Council. But, she emphasized that the demonstration will also include thousands of non-Jews who support the struggle for Soviet Jewry.

"The mobilization will serve as a watch to guarantee and stimulate" both the United States and the Soviet Union to keep the issue of human rights high on the agenda during the talks between Reagan and Gorbachev, said Morris Abram, chairman of the National Conference on Soviet Jewry, which organized the Task Force.

"The principle that we will be emphasizing is that while no one is asking for direct linkage of arms

reduction and human rights or emigration, the credibility of the Soviet Union and the good faith and the return to the normal relationships, which we all hope for, will be measured by whether the Soviet Union complies with its obligations under international law, international treaties and the Helsinki Accords," he added.

'Full Range of Issues'

Abram said the joint U.S.-Soviet statement issued by the White House after Reagan announced Gorbachev accepted his invitation to a summit Dec. 7 was "historic." He explained that this was because

the statement stressed that the summit would be "a substantive meeting which covers the full range of issues between the two countries" and would seek to make "significant headway over the full range of these issues."

Abram credited the "persistence" of Reagan and Secretary of State George Shultz in making human rights an agenda item in meetings with the Soviets in changing Moscow's attitude that human rights is strictly an internal matter.

The demonstration, which will start at the Ellipse and conclude at the Lincoln Memorial, will be "dignified and orderly," Abram said.

Joan Wachstein Installed As Officer Of National Federation Of Temple Sisterhoods

Joan Wachstein, of Wilmington, has been installed as a National Vice President of the National Federation of Temple Sisterhoods (NFTS). Wachstein was installed during the NFTS biennial convention in Chicago. This year marks the 75th anniversary of the Reform women's organization.



Joan Wachstein

Joan Wachstein has been an officer of the Delaware Jewish Federation since 1983. She is a past president of the Milton and Hattie Kutz Home Auxiliary, and an officer of the Jewish Family Service of Delaware.

Mrs. Wachstein is a dental hygienist; the mother

of two daughters and is married to Mortimer Wachstein, DDS. Wachstein has been active in Jewish community affairs most of her adult life. She joined the Temple Beth Emeth Sisterhood in 1964. She was president of the organization in 1968.

Mrs. Wachstein has served as a board member of NFTS three times, starting in 1975. She has been given awards by the Delaware Chapter of the National Council of Christians and Jews. She is also active in the United Way Campaign.

of two daughters and is married to Mortimer Wachstein, DDS.

The NFTS convention was attended by members of 800 reform synagogues in the US and Canada.

Constance Kreshtool of Wilmington is the immediate past President of the NFTS and now serves on its Board of Directors.

Women's Pacesetter Brunch Rescheduled

The Women's Division Pacesetter brunch for the 1988 campaign has been rescheduled to Sunday, Dec. 13 at 11 a.m. Judy Topkis, chairwoman of the Pacesetter Division regrets any inconvenience that this change creates.

However, the entire Women's leadership feels it is extremely important to make Dec. 6 available for all to join in the mobilization rally on behalf of Summit II and Soviet Jewry being held that day in Washington.

It is hoped that this year's opening brunch on Saturday, Dec. 13 will set the pace and tone for the 1988 campaign. The brunch is being held at the Christina House, 707 King Street at 11 a.m. Congressman Thomas Carper is the guest speaker. The brunch is open to any woman making a \$1,000 minimum pledge to the 1988 campaign. Reservations can be made by calling the Federation office.

Women's Division Campaign
See on page 5

Editorial

We All Have A Russian Connection

Statistically, most American Jews have an ancestor from what is now the Soviet Union.

We are now part of the largest Jewish Community in the world. The USSR's Jewish population is the third largest. It is only through the forethought, luck, or accident that we are not part of Soviet census.

We too may have been refuseniks, or carried an I.D. card with "IVRI" written in the space for nationality.

It could have been "our" Gorbachev going to meet the American President December 7th. It could have been us wondering whether the American President was going to con-

tinue to pressure "our" government to permit freer emigration. It could have been one of us waiting to hear from a vaguely remembered relative in an American city difficult to locate on the best Soviet Atlas.

But through the accident of birth, and the wandering of our ancestors, we were fortunate enough to be born here, rather than there.

The big names, the Refuseniks whose names are so familiar, (Begun, Slepach, Nudel) are free after years of struggle. But there are many more. People whose names we don't know. People who haven't received publici-

ty. Little people. People exactly like our ancestors, who want to leave the USSR to practice what we take as a given. They want to be free to be Jews, or even not to be Jews. They want that simple choice.

Because we have that choice. Because we are free to petition our government. Because we are free to assemble and voice our differences, we now have a NO-RISK obligation to those of our kinsmen who do not have basic rights. It is our obligation to assemble December 6th in Washington to demonstrate on behalf of those who can not . . . on behalf of those who have no voice in their

government.

We urge our readers to join the Delaware delegation going to Washington, D.C. on December 6th to demonstrate on behalf of Soviet Jewry on the eve of the historic summit between President Reagan and Soviet leader Mikhail Gorbachev.

While famous refuseniks are leaving the USSR, they are not the only refuseniks. They are not the only Jews who want to leave the Soviet Union. Let the Soviet leader know, that the others are not forgotten. An obligation partially met is not an obligation fulfilled.

On Verge Of Important Treaty Between US And USSR

By DANIEL B. DROOZ

"The US and USSR are on the verge of a major treaty on arms control," according to *New York Times* correspondent Michael Gordon. Gordon spoke before the Delaware Pacem in Terris on the 20th anniversary of the founding the peace organization.

But, Gordon noted, "the treaty is a good beginning, but it won't cover long range nuclear missiles or nuclear testing and it won't cover Chemical and Biological Warfare or nuclear proliferation. That will be the next Administration's problem," the *New York Times* reporter added.

Gordon explained that, "Iraq is using chemical weapons regularly. Iran is using them frequently." Gordon noted that Iran uses Iraqi chemical arms that don't explode. "They collect the misfires and shoot them back at the Iraqis."

"Chemical weapons are a poor nation's answer to nuclear threat," according to the *Times* Defense reporter. "And, I don't sleep very well when I think about it," he added.

"The Arab armies around Israel have chemical/biological arms stockpiled. They are part

of their order of battle. They use them as a deterrent to Israel's nuclear potential," according to Gordon.

The reporter for the *Times*, Washington Bureau, also thought "The probable reduction of medium and short range nuclear weapons in Europe is of little strategic value. The treaty won't cover long range missiles, bombs, artillery or tactical nuclear weapons."

Mr. Gordon does not think the world would be any more secure without nuclear arms, than it is today. And, "the prospect of a non-nuclear armed world is very remote. We opened Pandora's box in 1945," he said.

Gordon also told the peace organization, "whenever either super power starts a bidding game: raising the level or numbers of nuclear weapons to be trashed, the talks are stalled. Nothing productive is happening."

He reminded Pacem in Terris members that, "nuclear arms are cheaper in terms of military budgets than the massive numbers of conventional weapons the super powers need to feel secure."

On a more positive note, the *New York Times*

man added, "Neither the US or the Soviet Union have any interest in a nuclear war. Both governments are very cautious. The super powers are in equilibrium on nuclear issues."

"The real danger," Gordon noted, "comes from nuclear proliferation to third world countries." India and Pakistan were Gordon's prime examples of nations that should not be nuclear. "Third world powers are the most likely to use a nuclear device in anger" according to Gordon.

From Our Readers

To the Editor:

My family and I wish to express our sincere gratitude to Jewish Family Service and other volunteers for everything you have done to make out first home in the United States cozy and comfortable. To come in the middle of the night and find an apartment with even the smallest things in their places waiting for us was a tremendously touching experience. Thank you ever so much.

Vekkers family

THE JEWISH VOICE (USPS-704160)

Second class postage paid at Wilmington, De. Published semi-monthly, and monthly in July and August, by the Jewish Federation of Delaware. 101 Garden of Eden Rd., Wilmington, De., 19803. Subscription price \$7.50. Mailed to subscribers who are contributors to the Jewish Federation of Delaware. POSTMASTER: Send address changes to The Jewish Voice, 101 Garden of Eden Rd., Wilmington, De. 19803. (302) 478-6200.

DEADLINE

The next issue of The Jewish Voice will be published FRIDAY, NOVEMBER 27. The deadline for stories and photos is noon, MONDAY, NOVEMBER 16. Material should be sent or brought to the Jewish Voice office at the Jewish Federation of Delaware, 101 Garden of Eden Rd., Wilmington, 19803. (302) 478-6200. All articles must be typed, double spaced.

The Jewish Voice

Published semimonthly, and monthly in July and August, by the Jewish Federation of Delaware.

Editorial opinions expressed in this newspaper are those of the newspaper and not those of any individual. Signed editorials do not necessarily represent the view of the newspaper but rather express the view of the writer.

Jewish Federation of Delaware, 101 Garden of Eden Road
Wilmington, De. 19803. (302) 478-6200.

Subscription Price: \$7.50

Circulation 3,000

Mailed to subscribers who are contributors to
Jewish Federation of Delaware
Second Class Postage paid at Wilm., Del.

Toni Young, Chairman

Editorial Committee: Stanley W. Ballick, Cecell Ehrich, Rita Katz Farrell, Nisson Finkelstein, William P. Frank, Edwin Golin, Marga Hirsch, Mike Lazarus, Toni Young.

Daniel B. Drooz, Editor

Mark Edward Gawel, Advertising Manager
Robert N. Kerbel, Executive Vice President

No material will be accepted by The Jewish Voice which is considered against the best interests of the Jewish community.



Dear Editor,

Within six months a five member international commission will decide by compulsory arbitration the fate of Taba, a strip of beach front land south of Eilat.

Taba is only a 250 acre area, but it has a luxury hotel which yearly attracts thousands of foreign tourists with their foreign currencies.

At the northeast corner of the Sinai, the six mile wide Gaza Strip border is crossed by a railroad line (now dismantled) and two roads.

A high priority of Israel is its need for secure borders. If the Gaza Strip, along with the West Bank, becomes autonomous, the Gaza Strip could become a terrorist passageway from the Sinai into Israel. This loophole could be filled by Egypt giving approval for Israel to have a narrow strip of land inside the Gaza Strip border, while Egypt would gain land ownership of Taba and the hotel owners would receive a long term lease on the hotel they built.

If the five member international commission can not

find an agreeable solution for Taba, perhaps this proposal could be the basis for a solution. Perhaps this could energize peace efforts.

Pete Singer
San Diego, CA 92109

Spiller Bequest

Thirty-three years almost to the day after her death Elizabeth Horowitz Spiller's wish to leave part of her estate to the Jewish Federation of Delaware has finally been realized.

It was a great surprise to the officers of the Jewish federation to learn that the Federation was the major beneficiary in the will of Elizabeth Spiller and her sister Anna Horowitz Simon. The sisters who had been long-time residents of Wilmington passed away over thirty years ago.

The sharp eyes of a relative noticed Elizabeth's name among the published list of accounts in the Mellon Bank slated to be lost by Escheat to

(Continued to Page 6)

ON THE OTHER HAND N. Even-Or



Every Experience Is An Opportunity

Every experience is an opportunity.

Lying on my back after quadruple bypass surgery, dozing on and off under the influence of the pain killers, I was in the right mood and comprehension level for daytime TV.

One of the hospital cable channels appeared to be devoted to what I would call rock and roll, although I am sure that initiates would have subdivided the offerings into finer categories. Although the speed with which the over-amplified music throbbed seemed to vary from piece to piece, the vocal message, as much as I could get of it, appeared to have a repetitive theme. The lead singer, of threatening dress and hair style, often bouncing up and down in a simian crouch that lent strength to Darwinian theory, devoured the microphone with words of love for "baybeh." "Baybeh" had left, often because of the singer's admittedly poor behavior, but the singer wanted "baybeh" back, needed "baybeh," had to have "baybeh's" love. The singer had to "make it" with "baybeh" or else life had no meaning. Didn't "baybeh" hear him/her/it? Why didn't "baybeh" give him/her/it the love he/she/it had to have or die? Sometimes the number ended with repeated mouthings of love and "baybeh" bouncing around in an echo chamber that must have been somewhere in the hospital room behind the TV. Anyway, the theme was love.

On some of the other channels there were what I guess are called "soaps." These were peopled by men and women of quite reasonable appearance, speaking intelligible English without bouncing, echoes or over-amplification. They appeared to be involved in exceedingly complex relationships, not all of the most pristine character. Love, again, was the dominant theme, though nobody mentioned "baybeh." Love here had the complexities of a round of *pilpul*. There was a goodly component of

lust involved, sometimes with a smattering of borderline incest, and much soul-searching as to whether or not it was right for A to love B without C knowing it, when it was clear that D and E had never intended that F and G should have spent that weekend together in H's weekend retreat, not at least when divorce proceedings were underway between J and K, involving, of course, the custody of L and M. The real question, it seems, was whether A's love for B could overcome the burden of P's terminal disease, which had precipitated Q's nervous breakdown. Anyway, the theme was love.

Now, how can anyone saturated with this sort of thing understand God's love for Israel? How can he understand what is meant in the Sh'ma when it says that we should love the Lord our God with all our hearts, with all our souls and with all our might?

Love has been trivialized into a catch phrase, a look, a scent, a motion. It has been confused with power, self-aggrandizement, self-gratification, lust, and even sadistic and masochistic abuse. There is no way we can understand God's love for us and our love for God if we cannot understand the possibility and the nature of our love for each other.

Desire may come quickly. Love takes much longer. I'm sure that psychologists and other savants have precise definitions of love. I have my own ideas based on a half a century of post-Bar Mitzvah living.

For one thing, love isn't an instant dish cooked up in the social microwave. It develops slowly over years, even decades, of living together. Of working, succeeding, failing, laughing, weeping, disagreeing, sharing, hoping, grieving, celebrating. It is caring for another so much that his or her goals become yours, become more important than yours. It is feeling pain when the one you love hurts, joy when they exalt. It is, as described in Genesis,

becoming one flesh, on spirit, while remaining distinct personalities and developing as such.

It is this kind of love that our tradition speaks of when it describes God's espousal to Israel, the love that can exist between man and wife, full of passion and even rejection, at times, but firm and enduring. This is why the great Rabbi Akiba saw in the Song of Songs, not a secular and sensual love, but the love between God and Israel.

When my beloved wife and I said goodbye with a wave, just before they wheeled me into the operating room for open-heart surgery, our daughter-in-law hugged her, she told me later, and then our Liz said she knew what love was. She was right.

God has blessed me in many ways all the days of my life, but in none so great as my dear wife and marriage. For through them He has shown me the nature of His love for me and His people, and how I, how we, can love Him.

Now you will understand why my favorite definition of love is found in Genesis Rabbah, one of our great collections of Midrash. It is the commentary on that point in Genesis when God has created Adam, but not yet Eve, and He observes that "it is not good that the man should be alone." The Midrash says:

He who has no wife dwells without good, without help, without joy, without blessing, and without atonement. Rabbi Simon said: Without peace, too. Rabbi Joshua said: Without life, too. Rabbi Hiyya said: He is also incomplete. Some say: He even impairs the divine image.

Praised be Thou, Oh Lord, who has created love on earth, that through it man may reach toward heaven. Amen

Should Religious Holidays Be Celebrated In The Public Schools?

The debate over the celebration of Christmas (and later Easter) in the public schools is endless and unavoidable. This year the Jewish Community Relations Committee has published guidelines concerning religious activities in the public schools. We hope they will be of help to those who need them.

Not everyone celebrates Christmas or any of the other major religious holidays that fall in the month of December. These religious holidays mark significant events for each of several faiths. Teachers and administrators need to be sensitive to children whose religious upbringing does not include these observances: Buddhists, Christians, Hindus, Jews, Muslims, and nonbelievers, among others.

Christmas has frequently been treated as a "national" holiday in the same category as Thanksgiving, the Fourth of July, and other traditional American holidays. However, Christmas is not in the same category as these holidays; it is an important Christian holy day which celebrates the birth of Jesus, the Christian messiah. It would demean a fundamental tenet of Christianity to reduce the Christmas celebration to the level of "another holiday lesson plan."

Should Children Sing Christmas Carols?

All of our ancestors came to America for the opportunity to worship according to the dictates of their own faiths.

The proper place for the observance of religious holidays, including the singing of religious songs, is the house of worship or home.

Should Children Participate in Christmas Plays in the Public Schools?

Christmas plays generally portray Christian church themes, which have NO place in the public schools. The participation of students in a "winter festival" preserves the holiday atmosphere, but avoids religious connotations. Such winter festivals are therefore more appropriate seasonal events for the public schools. Schools can use the holiday season as an opportunity to celebrate the brotherhood of mankind.

Does Religious Celebration Belong in the Public Schools?

NO! The principle that public schools shall be religiously neutral has been established and accepted in a long line of Supreme Court decisions. The use of public funds for any religious observances in public schools undermines the basic principle of separation of church and state. Further, the beliefs of the majority are likely to be advanced at the expense of the minority, whenever religious holidays are observed in public schools. To maintain church-state separation, neither Christmas, Chanukah, nor any other religious festival should be celebrated in this setting.

What Is Appropriate?

The following are examples of activities which are appropriate:

1. Education about the principles of religious freedom and religious liberty.
2. Intercultural programs which focus on the role religion has played in the development of society.

3. Factual and objective teaching about religion.
4. Religious symbols used by individual students as a model of self-expression.
5. The study of religious music as part of a music appreciation course, or as part of a study of various lands and cultures.
6. Recognition of a student's absence from school due to a religious holiday as an excused absence.

What Is Not Appropriate?

1. Organized prayer.
2. Distribution of Bibles.
3. The public display or presentation of religious plays and films in a religious context.
4. Religious programs or prayer meetings during the school day.
5. Penalizing students for an absence due to a religious holiday.
6. Singing of Christmas carols and/or chanukah songs.

If You Have Questions,

Call The Jewish Community Council

The Jewish Community Relations Committee of the Jewish Federation of Delaware is devoted to community relations, information and action. We believe that religious liberty, free from government promotion is an indispensable aspect of American democracy.

Please feel free to obtain needed information. Our telephone number is 478-6200.

All communications with the Committee are and will be kept in the strictest confidence.

Delaware Jewish Federation Wins Public Relations Awards

The Jewish Federation of Delaware has won a Gold and a Bronze awards for excellence in Public Relations from the Council of Jewish Federations. Delaware's delegation to the Council of Jewish Federations, General Assembly in Miami Beach, November 18-22 will receive the prizes.

A total of 13 Gold Awards will be given. Delaware's prizes were awarded in the Newspapers without advertising (Bronze) category and the gold Award was for our 1987 Campaign Brochure.

Robert Kerbel, executive director of the Delaware Federation and Mark Gawel, acting Editor of the Voice and Advertising manager were responsible for producing the prize winning publications.

Delaware's delegation to the Miami Beach General Assembly will be led by Federation President Stephen E. Herrman. Delegates include: Marjory

Stone Levine, Shelly Mand, Joan Wachstein, Francina and Larry Isakoff, Robert and Ruth Kerbel, and Rabbi Kenneth Cohen. The Delaware Federation will be honored at the Assembly when Martin G. Mand joins the Board of Directors of the Council of Jewish Federation.

The topics for the general assembly's discussion are:

Transmitting Jewish heritage, commitment and values to the next generation; and ensuring a bright future for Soviet Jewry. More than 3,000 delegates expected to attend the 56th General Assembly of the Council of Jewish Federations.

Twenty forums, consisting of formal presentations by experts and panelists followed by question-and-answer sessions, will deal with a wide range of domestic and overseas concerns. Several forums will focus on Israel-Diaspora relations, to commemorate Israel's 40th anniversary.

Domestic issues center on four basic themes:

- **Transmission.** Involving the next generation in campaign and leadership and reaching out to inadequately involved Jews, such as singles, the elderly and the disabled.

- **Unity and diversity in the Jewish community.** The question of "who is a Jew?"

- **Jewish education.**

- **Jewish mobility.** Retooling Federations in order to cope with the change from a local to a continental society.

A number of forums will feature overseas concerns, including:

- **Soviet Jewry.**

- **Jewish communities in distress — Ethiopia, Syria and Iran.**

- **The Third World.** The JDC role in helping developing countries.

- **World Jewry.** Building Jewish community and continuity globally.

Dr. Jean J. Kirkpatrick, former United States Ambassador to the United Nations, will join two prominent former Soviet refuseniks, Ida Nudel and Vladimir Slepak, as featured speakers at the 56th General Assembly of the Council of Jewish Federations, the largest annual gathering of North American Jewish community leaders.

An estimated audience of 3,000 is expected for Kirkpatrick's address, as well as for the satellite presentation by Nudel and Slepak live from Israel, on Saturday evening, Nov. 21.

Also scheduled to speak at the General Assembly are Israeli Prime Minister Yitzhak Shamir, who will comment on the state of the Israel-North America partnership and join in the commemoration of Israel's 40th anniversary on Thursday evening, Nov. 19; and CJF President Shoshana S. Cardin, who will deliver the keynote address on Wednesday evening, Nov. 18, on the overall General Assembly theme of "Dor L'Dor: From Generation to Generation — Building Community and Continuity Through People."

Steering Committee; on the Board of Directors of the Federation, and has received the Braunstein Young Leadership Award.

Weinstein is the daughter of the late Sam Eisenstat, a past Federation president and campaign chairman and Dora Eisenstat, a past woman's campaign chairwoman. "I grew up understanding the importance of Federation's role in our community. I feel a strong commitment toward insuring its successful continuation. Now it's my turn to pass these things on to others."

The Women's Division accounts for 20% of the funds raised in general campaign. It also provides an opportunity for women to perform an act of tzedakah as an individual.

Joining Ruth in campaign roles are: Judy L. Topkis chairwoman of the Pacesetter Division (\$1,000), Leslie Goldenberg and Toby Weiner co-chairwomen of the Vanguard Division (\$500-999); Betty Diznoff and Deane Kattler co-chairwomen of the Diamond Division (\$250-499); and Helaine Gordon as Super Sunday chairwoman, Alene Berkowitz, is leading the Attorneys Division.



Ruth Weinstein

Ruth E. Weinstein, Women's Division campaign chairwoman, announced the appointment of the 1988 women's campaign leadership. This year's women's campaign emphasis will be given to training a future generation of leaders. Where possible, chairwomen will be paired with inexperienced campaigners.

In a year when the main campaign theme is Dor L'Dor, (generation to generation), it is particularly appropriate for Ruth Weinstein to be overall chairwoman. She has served in many previous campaign roles, as campaign chairwoman of the Career Division and on its



Join The March

Larry and Francina Isakoff, Delaware Coordinators for the December 6, demonstration in Washington.

Six Long Term Refuseniks Get Permission To Emigrate

NEW YORK, (JTA) — Six more long-term refuseniks, some of them denied exit visas on grounds they possessed state secrets, have been granted permission to leave the Soviet Union, and one of them, a much decorated World War II hero, has already left, the National Conference on Soviet Jewry (NCSJ) reported.

According to the NCSJ, Col. Lev Ovsishcher, who fought with the Red Army, departed for Israel Monday. He had been denied a visa for 15 years on secrecy grounds and was stripped of his rank when he first applied.

Ovsishcher is expected to be followed shortly by Leonid Yusefovitch, Mark Shifrin, Andrei Lifschitz, Boris Fridman and Evgeny Yakir, all with their families.

Yusefovitch, whose wife, Ekaterina, is a Hebrew teacher in Moscow, refused to report for military reserve duty two months ago because he considered himself a citizen of Israel. The couple was first refused to exit permits in 1981 because Leonid allegedly was privy to state secrets.

The same pretext was given Fridman, engineer and an activist from Leningrad, when he first applied in 1978. His wife, Ludmilla, suffers from cancer and is an invalid.

Shifrin and his wife Slava, first applied to emigrate in 1981. Lifschitz was first refus-

ed in 1978 and has since worked as a janitor. He and Shifrin are both engineers and religiously observant.

But while more refuseniks are being granted exit permits, all is not well for the family of Anna Kholmiansky, wife of former Prisoner of Conscience Aleksandr Kholmiansky. She began a hunger strike Sunday to protest the continued refusal of Soviet authorities to grant them permission to leave the USSR, the NCSJ reported.

In the case of the Kholmianskys, refusal is based on a rule requiring anyone seeking to emigrate to obtain a statement from his or her parents that the applicant has no financial obligations toward them.

"These parents who wish to prevent emigration of their children may do so by refusing to issue such a document," Anna Kholmiansky stated in a letter to the authorities announcing her hunger strike.

"No other proofs are accepted and the authorities wash their hands, claiming the problem to be purely a family one. Thus, this ingeniously designed clause allows the authorities to hold people here for generations without affecting the image of a new Soviet liberalism," Kholmiansky said in her letter, which was made available to the NCSJ.

Ethiopia Denies Peres Request

JERUSALEM, (JTA) — Ethiopia has reacted negatively to a request by Foreign Minister Shimon Peres to allow the emigration of 15,000 Jews still living there.

Peres told the Conference

on the Demography of the Jewish People here Wednesday that he made the request in a meeting last month in New York with his Ethiopian counterpart, Berhanu Bayih.

"But the minister reacted negatively," said Peres. "He

argued that if the Jews were permitted to leave, the Moslems and the Christians would ask to do so."

But Peres added that the minister conceded that Christians and Moslems had not asked to leave the country.

Gap Remains Between Jesse Jackson And Jews

By WINSTON PICKETT
Northern California Jewish Bulletin

SAN FRANCISCO, (JTA) — In an interview in the November issue of Oakland-based Tikkun magazine, the Rev. Jesse Jackson has criticized Israel for doing business with South Africa, declined to take issue with Pope John Paul II for meeting with Austrian President Kurt Waldheim and blamed many Jewish groups for taking a leading role in opposing affirmative action to aid minorities.

National Jewish leaders who were given copies of the article in advance say that Jackson, the leading Democratic presidential contender, has failed to heal the rift with American Jews that followed in the wake of his last presidential bid.

In fact, says Rabbi Marc Tanenbaum, director of international relations for the American Jewish Committee, Jackson's positions "raise questions of credibility and truthfulness," and represent "a regressive step in what many had seen as a genuine effort to build bridges between himself and the Jewish community."

While less inflammatory than Jackson's offhand reference to New York City, in 1984, as "Hymietown," or his belated disassociation from Black Muslim leader Louis Farrakhan, who called Judaism a "gutter religion," Jackson's views in the interview are seen as undermining his support by more liberal Jews who otherwise might be attracted to his progressive social agenda.

"I think there are many American Jews who would like to have a strong, positive relationship with the Jackson forces and the Rainbow Coalition," said Tikkun editor Michael Lerner, who conducted what the liberal Jewish magazine called "A Dialogue with Jesse Jackson."

But Lerner labeled some of the front-running Democratic presidential candidate's comments as shocking, and

observed, "If he can't satisfy liberal Jews in this country, he'll have a very difficult time satisfying other Jews" whose support he seeks. Jackson did not return calls placed to elicit his comment.

In the interview, Jackson:

- Took Israel to task for providing military and economic aid to South Africa, comparing that country's Botha regime to Hitler's Third Reich. But Jackson failed to acknowledge the trade stoppages the Israeli government recently pledged in regard to South Africa.

- Refrained from criticizing the pope for his meeting with Waldheim because "that was the decision that the sovereign head of the Catholic church had to make... because Waldheim was Catholic, and (because) of the pope's obligation to give private counsel."

- Declined to directly repudiate Farrakhan, calling "an overreaction" the controversy surrounding that black leader's reference to Judaism as a "gutter religion" and his continued anti-Semitic posturing.

- Said he has "not found any anti-Semitism among black students that needed to be stood up against" on American college campuses.

- Said he apologized for his own prejudicial remarks during the 1984 campaign at the Democratic Convention, but declared, "I'm not going to wallow in that" during 1988.

- Called it unfortunate that some Jewish groups took a leading role in opposing affirmative action policies aimed at aiding minorities, specifically citing the controversial Bakke case that came before the Supreme Court.

- Supported "Israel's right to exist within secure boundaries," and a "homeland or state" for the Palestinian people; normalized U.S. trade relations with Arab nations; and an expansion of the Camp David peace process to include other Arab nations, including a representative of the Palestinians.

Jackson's comments had a

ripple effect on official Jewish leadership before the magazine had even gone out in the mail. At its quarterly meeting in St. Louis last week, the National Jewish Community Relations Advisory Council (NJCRAC) handed out advance copies of the interview at a session to plan strategies for the months ahead.

Kenneth Bandler, NJCRAC director of public information, reported that members of his organization were disappointed by Jackson's rhetoric. "Jackson will be coming to major cities and requesting meetings with local Jewish communities," he said, and "we want to give him a better understanding of Jewish concerns."

Tanenbaum of AJCommittee suggested that while the door should be left open to further talks with Jackson, "we don't need more meetings to hear him repeat (his) distortions."

The rabbi said he was most disappointed at what he saw a reversal of Jackson's position regarding Israel and South Africa. In March, he and Jackson appeared together at a debate at Queens College, where Jackson, at a news conference, admitted that it was unfair to single Israel out among those doing trade with South Africa.

The vast majority of trade with South Africa takes place between the United States, Great Britain and Saudi Arabia, which, Tanenbaum said, "fuels South Africa's industrial economy by providing 75 percent of its oil supply."

Tanenbaum went so far to say that, in that connection, Jackson was operating on a "double standard," and conjectured "whether these attacks on Israel might not be a way of paying off his support from Arab sponsors."

In addition to his well-documented ties to Third World countries, Jackson recently was reported to have received \$200,000 from the Arab League for his Operation PUSH (People United to Save Humanity).

In light of those revelations, Tanenbaum said, Jackson himself has cast into doubt whether his words are those of "credibility and truthfulness, or anti-Israel demagoguery."

Not all responses to the Tikkun interview lay the blame on Jackson alone, however.

Rabbi David Saperstein, director of the Religious Action Center of the Union of American Hebrew Congregations in Washington, called the interview "narrowly focused," and said it failed to give credit to the changes in Jackson's positions since the last presidential election.

ADVERTISERS:

The advertising deadline for the NOVEMBER 27 EDITION of the VOICE is MONDAY, NOVEMBER 23.

Coming December 11, The Annual Hanukkah Edition. For further information contact the Advertising Department at 478-6200.

Office Furniture



We have it all in stock, a huge selection for immediate delivery.



Office experts since 1919.

Located at 3rd & Market, Wilmington
302-655-7166

Thriftway

5%
SR. CITIZEN
DISCOUNT
EVERY TUESDAY ONLY
SEE COURTESY DESK
FOR DETAILS

Your Check
is Welcome

TeleCheck

INDEPENDENTLY
OWNED SUPERMARKETS

24 HOUR
SERVICE...

Film Printing & Developing

SEE STORES'
DETAILS!

Kodak Film

AT LOWEST SUPERMARKET PRICES

110-12 EXP	\$2.15	126-12 EXP.	\$2.39
110-24 EXP.	\$2.79	126-24 EXP.	\$2.99
Disc Film - 15 Exp	\$2.59	CP 135-C24 EXP.	\$2.89
Disc Film - 30 Exp	\$4.89	CM/135 C24	\$3.59

7 DAYS A WEEK

2 Prints of Every Picture!

12 EXPOSURES	\$2.53
15 EXPOSURE DISC	\$3.14
24 EXPOSURES	\$4.67
36 EXPOSURES	\$7.31

Guaranteed
Color Print Film Developing

Single Prints!

12 EXPOSURES	\$1.69
15 EXPOSURE DISC	\$2.09
24 EXPOSURES	\$2.99
36 EXPOSURES	\$4.79

C110, 135 DISC, C-41 PROCESS
* OTHER SERVICES AVAILABLE
ASK FOR INFORMATION



Tri-State Mall
1-95 & NAAMANS RD.
CLAYMONT, DEL. 19703
STORE HOURS: Sunday 8AM-6PM
Mon.-Sat. 8AM-9PM
Friday until 10PM

Graylyn Crest Center
1718 MARSH ROAD
WILMINGTON, DEL. 19803
STORE HOURS: Sunday 8AM-6PM
Mon.-Sat. 8AM-9PM

Penn Mart Center
DU PONT BLVD. & BASIN ROAD
NEW CASTLE, DEL.
STORE HOURS: Sunday 8AM-6PM
Mon.-Sat. 8AM-10PM

Faulkland Road
CHESTNUT RUN CENTER
1710 FAULKLAND RD.,
WILMINGTON, DEL. 19806
STORE HOURS: Sunday 8AM-6PM
Mon.-Sat. 8AM-9PM

First Amendment Discussed By Marc Stern

Marc Stern, the Co-director of Law and Social Action at the American Jewish Congress, addressed the Delaware Jewish Community Relations Committee on November 4, 1987. Stern, who has been litigating church-

state and civil rights issues for ten years, spoke about: separation of church and state, free speech and potential restrictions on Jewish organizations which accept public funding.

In the area of separation of

church and state, Mr. Stern discussed recent decisions concerning religion in schools. He emphasized the unsuccessful challenges in Alabama and Tennessee to the use of books allegedly teaching "secular

humanism," characterizing the issues raised by those cases as difficult and complex.

Stern also discussed the status of creches and other religious symbols on public property, noting that the

lower courts have continued to find such symbols to be in violation of the First Amendment (even after the



Marc Stern

Supreme Court's 1984 decision that a creche in Pawtucket did not violate the Constitution.)

Stern also spoke about the scope of protection afforded free speech by the First Amendment. He suggested that it is time to revisit whether "racist speech" should be given full protection, questioning whether our society might be better served by some restrictions on racist and anti-semitic speech.

Finally, Stern raised a subject which he believes should be of great concern to Jewish federations — the extent to which Jewish social service organizations which accept public funding, may maintain a sectarian environment; or may have disproportionately Jewish populations. He discussed a recently settled New York case, the result of which may inhibit Jewish children from being placed in Jewish child care institutions.

Spiller Bequest —

(Continued from page 2)

the State. When it was brought to the attention of another relative, Paul Spiller Esq., he began the legal sleuthing. Spiller's investigation revealed that Elizabeth Spiller had left the major part of her estate to her sister, Anna Simon, and, if Anna did not survive her, to the Jewish Federation of Delaware.

Anna Simon did indeed survive her sister but only for a year. On reading Anna Simon's will Paul Spiller learned that she also left her estate to the Jewish Federation of Delaware.

After several months of paper work the funds in Elizabeth Spiller's account in the Mellon Bank were turned over to the Jewish Federation of Delaware.

RALLY FOR FREEDOM

JOIN TENS OF THOUSANDS OF JEWS IN WASHINGTON FOR A
MARCH AND RALLY
TO DEMONSTRATE SOLIDARITY FOR SOVIET JEWRY

TELL GORBACHEV
"LET MY PEOPLE GO"

SUNDAY, DECEMBER 6, 1987 IN WASHINGTON, DC



March with prominent legislative, labor, civic and community leaders and well-known former refuseniks.

Hear Elie Wiesel, Ida Nudel, Vladimir Slepak, Natan Sharansky, Yulie Edelshtein, Misha Kholmiansky

Buses to leave JCC, Newark & Dover locations at 9 AM and will return after rally. Bring a brown bag lunch since other facilities may not be available.



Reservations and check for \$10 per person must be in our office by Monday, November 23. Reservations may be made by calling the Federation (478-6200). Checks payable to Jewish Federation of Delaware.

Enclosed is \$_____ for _____ tickets for the Mobilization for Soviet Jewry on Sunday, December 6th. Send checks to Jewish Federation of Delaware, 101 Garden of Eden Road, Wilmington, DE 19803.

Name: (Please print): _____

Address: _____

Phone Numbers: Home: _____ Business: _____

We would like to board the bus in
_____ Wilmington _____ Newark _____ Dover
MORE INFORMATION TO FOLLOW.

Election Procedures Valid World Zionist Court Rules

By ANDREW SILOW CARROLL

NEW YORK, (JTA) — The Supreme Court of the World Zionist Organization on Friday ruled in favor of two Zionist groups and against three others who contested the process by which American delegates were elected this spring to the 31st World Zionist Congress.

In ruling here Friday, the court accepted appeals of the election procedures brought by the Zionist Organization of the America and Bnai Zion, but rejected appeals brought by the Religious Zionists of America, Americans for Progressive Israel and Students for Israel.

All five groups brought appeals against the Area Election Committee (AEC) of the American Zionist Federation, which conducted elections in May to determine representation at the Zionist congress, which convenes in Jerusalem on Dec. 6.

Some 210,957 American Jews participated in the May elections and on the basis of the returns, 152 mandates were apportioned to eight of nine competing slates representing various Zionist ideologies across the political spectrum.

The appellants were critical of a verification procedure adopted by the AEC which sought a more accurate count of eligible voters from the various ideological slates of American Zionist Federation. In the process of tabulating votes, the AEC penalized organizations for voter eligibility discrepancies.

In their appeals, the RZA, API and Students for Israel maintained that they were each entitled to a larger share of the mandates than had been determined by the AEC procedure. (RZA received 14 mandates, API got one and the Students for Israel did not win any.) In addition, the RZA contended that the independent company hired to examine voter records, Equifax, collaborated with AEC officials in falsifying its findings.

In ruling against the appellants and for the AEC, the court said that it is the duty of a constituent body to attack election methods before the election, and not after.

Reading from the 19-page judgment, the court president, Justice Moshe Etzioni, said, "We would add that the conception of waiting for the results of an election before attacking the election method is, in our opinion, against public policy and inconsistent with the fair conduct demand-

ed of a public voluntary body." Etzioni continued, "We are of the opinion that the election method laid down by the AEC was sound and reasonable and constituted 'a method consistent with

generally accepted democratic principles...'" The justice also defended Equifax, saying its essential findings remain intact.

In the API appeal, the decision hinged on whether or not

the court would accept the propriety of the organization's membership rolls at the time of the election. The court agreed with the AEC and Equifax, saying that API had turned contributions to the

organization into "artificial memberships for election purposes," thereby violating election rules and the spirit of a recent call to Zionist organizations to add new (Continued to Page 9)

Next year in Jerusalem is too long to wait.



Please send me more information on vacationing in Israel.

NAME _____

ADDRESS _____

CITY _____ STATE _____ ZIP _____

Israel Government Tourist Office
3514 International Dr. N.W.
Washington, D.C. 20008

Israel

Israel
This year!

Rabin Charges: US Manipulated By Iraq

Oct. (JTA) — Israeli Defense Minister Itzhak Rabin charged that the United States has been manipulated into supporting Iraq in its eight-year war with Iran, with the result that the Soviet Union has "become the only superpower that can talk to both parties" in the Iran-Iraq war.

"We certainly would disagree with his assessment and we're surprised at his criticism of our policy," State Department spokesman Charles Redman said. "All states in the Middle East, including Israel, which has been singled out frequently as an enemy of the government of Iran, should be concerned

about Iran's hostile behavior and expansionist goals."

Although Israeli leaders have made it no secret that they favor Iran in the Gulf war, Rabin's remarks were believed to be the first public criticism of the U.S. policy by an Israeli government official.

The defense minister hinted

that the West, including the United States, may have fallen into a trap to take action against Iran for the benefit of Iraq.

As Rabin saw it, the U.S. and European navies entered the Gulf conflict due to Iranian attacks on civilian oil tankers — actions that were only in retaliation for Iraqi attacks on Iranian oil storage installations and ships.

Iraq had certain objectives when it started the war and later "globalized" it, Rabin said. Iraq hoped to knock Iran out by attacking its oil installations on the eastern shores of the gulf. Failing that, it sought to draw Iran into attacking pro-Iraqi installations and tankers on the western shores.

This forced the United States to take actions against Iran, to Iraq's benefit, Rabin said.

He contended that the Western fleets do not "protect the Iranian right of free navigation, which is under attack by the Iraqis. They protect only the right to navigation of Kuwait, Saudi Arabia

and the oil princes of the western side of the Gulf that might be attacked by the Iraqis in response to the Iraqi attacks."

He said that if Israel had to choose a winner in the war between its two sworn enemies, it would prefer Iran. As he had stressed during his visit to Washington last summer, Rabin explained that Iran will be a "bitter enemy" of Israel as long as the Khomeini regime is in power.

But he added that Iran was a friend of Israel for the 28 years before the Khomeini regime and could be again "once this crazy idea of Shiite fundamentalism is gone."

Rabin also contended that the Iran-Iraq war has produced some political benefits for Israel and may even help advance the peace process with Jordan.

Among the advantages was the fact that the Arab world, particularly Syria, cannot now count on Iraq to join an Israel-Arab war, "whatever some crazy Syrian might think," Rabin said. In addition, he said, the Gulf war has created "total disarray" in the pro-Soviet camp, allowing Egypt to rebuild its relations with the Arab world, damaged by the Israeli-Egyptian peace treaty of 1979, without harm to Israel.

Furthermore, Rabin said, Baghdad's dependence on Jordan for logistical support has provided King Hussein with considerable leverage in peace moves toward Israel.

Correction

Printers' devils bedeviled the article on Irving and Doris Morris' winning the Volunteers of the Year Award on page one of the last issue. We apologize.

Kosher Take-Out In Moscow

When Malev flight 100 from Budapest landed in Moscow (Oct. 28), it carried one of the most unusual cargoes ever to arrive in the Soviet Union. The first shipment of food and supplies to stock the kosher take-out restaurant that will be opened on the grounds of the city's famed Chorale Synagogue.

Announcement of the historic shipment was made by Rabbi Arthur Schneier, president of the Appeal of Conscience Foundation, which is providing funds for the project. Among the foodstuffs that arrived in the

first shipment from Hungary were:

- 400 kilograms of salami and other smoked meats
- 160 kilograms of fresh chicken
- 150 liters of kosher cooking oil
- 200 kilograms of margarine
- 160 one-liter bottles of white wine
- 50 one-liter bottles of brandy

Also included in this first consignment were two refrigerator display cases.

All of the foodstuffs and kitchen and other supplies have been purchased with funds

provided by the appeal of conscience foundation and were admitted into the Soviet Union duty-free, Rabbi Schneier said.

He added that the certificate of kashruth bearing the approval of the Orthodox rabbinate of Hungary is printed on each of the products in Hebrew, Hungarian and Russian.

Approval for the kosher food service was granted earlier this year by Konstantin Kharchev, chairman of the Council of religious Affairs of the USSR.



**TUES, NOV 24
thru
SUN, NOV 29**

**"THE BEST AMERICAN PLAY
OF THE 1980's."** —William A. Henry III,
Time Magazine

NEIL SIMON'S

**BROADWAY
BOUND**

DIRECTED BY
GENE SAKS

Make checks payable to THE PLAYHOUSE THEATRE. Please enclose a stamped, self-addressed envelope for return of tickets, otherwise held at Box Office. Visa, MC, American Express and WFSFS accepted. Special rates available for Groups, Senior Citizens & Students for the Tues & Wed Evening and Friday and Sunday Matinee performances only. NO REFUNDS, but tickets may be exchanged. A Subscription Selection.

Tues, Wed, Fri & Sat Eves at 8 PM & Fri Mat at 2 PM
Sat Mat at 2 PM & Sun Mat at 3 PM Wed Mat at 2 PM

	Orch/Mezz	Balcony
Tues, Wed, Fri & Sat Eves at 8PM & Fri Mat at 2PM	\$30.00	\$20.00
Saturday Mat at 2PM & Sun Mat at 3PM	\$26.00	\$16.00
Wednesday Mat at 2PM	\$22.00	\$12.00

A Subscription Selection

Teletron (800) 233-4050

PHONE ORDERS NOW (302) 656-4401



THE LARK QUARTET

Featuring Wilmington Violinist Robin Mayforth



**Monday, November 23 • 8:00 PM
All Seats \$12.50**

Discovery Series tickets are still available. The series includes THE LARK QUARTET, LYNN HARRELL, Cello & IGOR KIPNIS, Harpsichord and pianist NAVAH PERLMAN. Tickets for all three concerts are only \$35.40. Also included in the price are pre-concert lectures and post concert receptions to meet the artists. Call the Box Office for further details.

Sponsored by The Du Pont Company

Box Office (302) 652-5577

Box Office hours are Monday through Friday 11:00 a.m. to 4:00 p.m. Tickets may also be purchased through all Ticketron locations or by calling Teletron at (800) 233-4050 or Tickettown 656-9797.

These programs are made possible in part through a grant from the Delaware State Art Council, an agency of the State of Delaware and the National Endowment for the Arts, a federal agency.

ISRAEL BONDS

For sale, reinvestment and redemption information call:

658-9337

Don't hesitate to call Tom Seidel, your Fuller Brush Man and Distributor for SABRA Panty Hose. (302) 798-1770



Harbor Anti-Democratic Views New Poll: Israeli Youth Still

By HUGH ORGEL

TEL AVIV, (JTA) — Israeli youth increasingly internalize the concept of democracy as a general human value, but when asked specific questions, most of them continue to exhibit anti-democratic views, according to Dr. Nina Zemach of the Dahaf Institute and Alouph Hareven of the Van Leer Institute in Jerusalem.

They were referring to the results of a public opinion poll Zemach conducted for the Van Leer Institute last May among 612 Jewish high school students, aged 15-18. The results were published in full in Haaretz Monday.

While only 6 percent of the respondents said they would vote for Rabbi Meir Kahane's extremist Kach Party, down from 11 percent in a 1984 survey by Zemach, a third or more agreed "with the ideas that Rabbi Kahane and the Kach movement stand for." A similar number would support a private organization

dedicated to avenging Arab attacks on Jews, the poll found.

According to the findings, 31 percent of those questioned believe an Arab found guilty of nationalistically motivated murder should receive "more severe punishment" than a

Jew found guilty in the same circumstances.

About 35 percent believe Israeli Arabs should not be free to express support for a Palestinian state in the news media, and about 50 percent believe the rights of Israeli

Arabs should be curtailed generally.

While 40 percent would grant Israeli Arabs full civil rights, the same percentage would ban them from voting in Knesset elections, the poll found.

On the issue of the administered territories, 60 percent of the respondents hold that Jews have virtually full right to the West Bank and Gaza Strip, while 30 percent think the Arabs have almost complete right to the territories.

Election —

(Continued from Page 7) members to their ranks.

The appeal of the Students for Israel was dismissed after the court determined that a nominating petition signed by 4,500 students did not justify an additional slate, since the students were not Zionist organization members as spelled out in election rules.

The court, however, did accept the ZOA and Bnai Zion appeals and, without further comment, directed that they not be penalized by the AEC.

In his concluding statement, Etzioni said that the court expressed "the hope that after the coming congress the whole procedure for determining membership of all types will be thoroughly examined . . ."

Etzioni also urged that eight outstanding mandates be divided between the RZA and API slates. He did not specify how they were to be divided.

The original assignment of mandates to the various Zionist slates was: Mercaz (Conservative), 20; Hadassah-Bnai Zion-American Jewish League for Israel, 48; Zionist Organization of America, 12; Students for Israel, 0; Association of Reform Zionists of America, 33; Herut, 9; Americans for a Progressive Israel, 1; Religious Zionists Association, 14; and Labor, 15.

The two other justices serving on the Zionist Supreme Court were Judge Asher Felix Landau and Judge Zvi Cohen. The panel delivered its ruling at the headquarters of the American Zionist Federation.

A TOUCH OF BROADWAY COMES TO WILMINGTON

The event of the season with a host of fabulous international stars of Stage, Screen, TV and the Concert Stage to benefit the Jewish Community Center and a Tribute to Toby Weiner, Director of Development, retiring after 26 years of service.

Sunday, November 22, 1987
Curtain - 7:30 p.m.
The Playhouse, DuPont Building

Elegant After-Theatre Dessert Reception immediately following at the Wilmington Trust Center, Rodney Square.

PRODUCED AND DIRECTED BY: ANNA SOSENKO

PIANIST-CONDUCTOR: COLLIN ROMANOFF

STARRING

Tovah Feldshuh



Renowned star of stage, screen and TV. Emmy Award nominee for "Holocaust," Tony nomination for "Yentl." Currently appearing in "LA Law."

Jack Gilford



Talented comedian nominated for an Academy Award for his performance in "Save the Tiger" and most recently appeared in "Cocoon."

Leonid Kuzmin



A 23-year-old Russian pianist who has won first prize in many international competitions. Acclaimed by the New York Times as "first class" for his recent piano recital.

Burton Lane



One of the theatre's greatest songwriters. Composer of the score of "Fianian's Rainbow," and "On A Clear Day You Can See Forever," which won the Grammy Award.

Yvonne Constant



International cabaret entertainer. Has appeared on The Tonight Show, at Reno Sweeney, Tramps, and Maxim's in New York, at Loew's, Monte Carlo, Montreux Palace and other world-wide supper clubs.

FOR FRIENDS OF JCC - \$ 36.00/person
Orchestra Seating
Elegant Dessert Reception

FOR SENIORS - \$ 18.00/person
Show Only

FOR PATRONS - \$ 200.00/couple
You will be invited to a privately hosted dinner at 5:30 p.m.
Two Preferred Orchestra Seats
Elegant Dessert Reception
Program Listing

TICKETS ARE NOW AVAILABLE AT THE JCC I

Diaspora Leaders Veto Jewish Agency Top Post

By GIL SEDAN
JERUSALEM, Nov. (JTA) — A profound crisis is rapidly developing here which could split the 74-member Jewish Agency Board of Governors between its Israeli members

and the powerful leaders of the Jewish diaspora.

The diaspora leaders, in a surprise move last week, rejected Akiva Lewinsky, the Labor Party's candidate for the office of chairman of the

World Zionist Organization and Jewish Agency Executive, to be elected at the World Zionist Congress which opens in Jerusalem Dec. 6.

According to Mendel Kaplan of South Africa, newly elected chairman of the Board of Governors, "it is a passing debate." But Lewinsky, stunned and bitter over the turn of events, believes it could destroy the long-standing partnership between the WZO and the overseas philanthropists.

"Unless one does not quickly find an equilibrium (between the Israelis and the diaspora leaders), the most important tool that the Jews have may be in danger," Lewinsky told the Jewish Telegraphic Agency in a special interview Monday.

"No partnership can survive with a constant strain... I have realized that people who share the responsibility for running the Jewish Agency for so many years do not really know each other," he said. "Neither the American (Jewish) leadership, nor the other way around."

'Advice And Consent' At Issue

At the core of the issue is the principle of "advice and consent." According to the power-sharing rules between the Jewish Agency and the WZO, the outcome of the World Zionist Congress elections is subject to the "advice and consent" of the Agency Board of Governors. This has been in effect since the board was formed in 1970 to reconstitute the Jewish Agency.

Lewinsky maintained that the clash among the overseas federations, represented by the diaspora leaders and the Israeli political establishment, which is democratically elected, stems from their different meanings in English and Hebrew, Lewinsky said.

The diaspora community understands it in the American context — the president nominates someone and the Senate either approves or vetoes the candidate.

In Israel, however, advice and consent is a lengthy procedure wherein those who object to a candidate must come up with very serious reasons why they do, Lewinsky said.

He stressed that political parties have the right to choose their candidates. "They (the diaspora leaders) are actually telling the parties that they cannot elect their own people..."

Kaplan, who held a news conference here Monday

prior to returning to South Africa for a month, cited the 1970 agreement, which says that "The election of the chairman of the WZO Executive will be done through prior mutual understanding with the Jewish Agency."

"It is with a sense of great sadness that I must state that the well-established procedures detailed above were not followed during the course of this year's nominations," Kaplan said.

He said the Labor Party had presented Lewinsky's candidacy as a fait accompli, ignoring the principle of advice and consent, and was thereby responsible for the crisis. In the past such things were done discretely, he said.

Why Lewinsky Not Suitable

He explained for the first time why Lewinsky was not considered suitable for the WZO-Jewish Agency chairmanship. "We are looking toward the 21st century, and we believe that Akiva — a man who has done tremendous work for the movement — cannot be counted as a leader for the next five or ten years."

Although Kaplan offered no specifics, his implication was that the Jewish Agency cannot be left in the hands of those who have run it up to now because they are unlikely to introduce the necessary changes.

The matter is one of image as well as substance. The diaspora leaders are concerned with the Jewish Agency's image among philanthropic donors. A new image requires new faces and unless the image is revitalized, they fear that contributions to the United Jewish Appeal, the dominant force behind the

Jewish Agency's \$450 million budget, might decline.

Kaplan made clear that the diaspora leaders are not about to change their minds with respect to Lewinsky or his partner on the Labor ticket, Avraham Avihai, who was running for Jewish Agency-WZO treasurer as the choice of the Confederation of United Zionists, of which Hadassah is the largest component.


But Lewinsky, who is also going abroad this week, told the JTA he would not give in and refused to join in speculation that the Labor Party might withdraw his nomination. He noted that the party's secretary, Uzi Baram, told a session of its central committee that Labor stood firmly behind Lewinsky.


He said he intends to take his nomination to the Zionist Congress, get elected and then "pass the ball" to the non-Israeli's.

If Lewinsky is elected and later vetoed, Labor may have to look to Likud, its partner in the unity coalition government, to form a common front against the overseas Jewish leaders. This could mean offering the post of treasurer to Likud, thereby breaking-Labor's pact with the Confederation of United Zionists and with other smaller Zionist factions promised important portfolios in the WZO executive in exchange for their support of Lewinsky.

Lewinsky conceded that this could pose a new problem. "There is nothing easier than reaching an agreement between Labor and Likud. But then we alienate all those Jews which the smaller partners represent."

**Your
Personal
Bookseller**





THE SMOKE SHOP
Wholesale - Retail - Mail Order
Delaware Ave. at Dupont St.
Wilmington • 655-2963



RESTAURANT AND DELI

**ORDER YOUR EMPIRE FRESH
KILLED TURKEYS EARLY**

or

**Let Us Do Your Thanksgiving
Cooking For You!**

COMPLETE TURKEY DINNERS

Everything from Soup to Nuts

featuring

*ROAST EMPIRE TURKEYS

*Challah Stuffing *Cranberry Mold

*Candied Sweets

*VEGETABLES

*DESSERTS

featuring

-Pumpkin Sweet Potato - Apple Pies



**With This Ad Senior Citizen
Saturday Morning Breakfast Special
Buy One Omelet at Regular Price
Get The 2nd One HALF PRICE**

Valid Till Saturday, Nov. 28, 1987
9 AM Till Noon

Let us be your caterer.

*Restaurant Hours M-Th. 11 to 9,
Fri. 11-10, Sat. 9-10, Sun. 9-9

1710 Naaman's Rd.
Wilm., DE 19810

475-4900



Rabbis Jacob Kraft and Herbert E. Drooz were honored Oct. 21 by Pacem in Terris, an organization they helped to found 20 years ago. The two Wilmington liberal rabbis were co-founders along with Reverend Albert Neilson, Msgr. Thomas Reese, Richard Rhoads and Charlie Robinson of the peace organization in 1966. Accepting his award, Rabbi Kraft noted, "There were times during the early years of the Vietnam War that we wondered if anyone besides the six of us would come to a meeting. We never dreamed we would be holding a 20th anniversary dinner." Rabbi Drooz quipped, "When we held our first silent peace vigil, I never thought four clergymen could stand together silently for so long."

Jewish Campus Life

WASHINGTON — With thousands of colleges and universities in North America to select from, how does a Jewish student choose a school where there are many other Jewish students, kosher meals and vibrant Jewish life?

Through the latest edition of "Jewish Life on Campus," an annual directory published by the B'nai B'rith Hillel Foundations.

The 1987-88 directory lists Jewish enrollment, kosher dining, Hillel units, and other related information in 402 colleges in the United States, plus 23 in Canada and 16 abroad.

As in the past, most of the American schools with high percentages of Jewish students are in the East. Excluding the Yeshiva University Stern College, the top schools percentage-wise are Brandeis University, with 64 percent; Brooklyn College, 60 percent; and Queens College, SUNY-Binghamton, and Clark University, 50 percent.

Following them are Columbia University, 39 percent; New York University, 37 percent; Tufts University, University of Pennsylvania, and SUNY-Oneonta, 35 percent; George Washington University, 33 percent; and Yale University, Tulane/Newcomb University, Washington University-St. Louis, SUNY-Albany, and SUNY-Stony Brook, 30 percent.

In the Far West, California State-Northridge has both the highest percentage (28) and the most Jewish students (8,000). It is followed by the University of California-Los Angeles (18 percent and 6,000 students), and University of California-Berkley (16 percent and 5,000 students).

Heading the South are Tulane/Newcomb (30 percent and 3,000 students), Emory University (22 percent and 1,800 students) Broward Community College (18 percent and 3,000 students), Duke University (17 percent and 1,500 students), and the University of Miami (16 percent and 2,300 students).

Of the Ivy League schools, following Columbia, Penn, and Yale are Harvard University (25 percent and 3,000 students), Brown University (25 percent and 1,600 students), Cornell University (18 percent and 3,200 students), Princeton University (17 percent and 1,000 students), and Dartmouth University (10 percent and 450 students).

The directory lists each

school alphabetically and by state (in Canada, by province). Included in the information about the schools are the names, addresses and

phone numbers of the staff members of each B'nai B'rith Hillel Foundation and other Jewish organizations.

The cost of the directory is

\$8.95. In bulk purchases up to 99 copies, there is a 25 percent discount while orders of 100 or more will gain a 40 percent discount. All your orders, in-

cluding check payment, should go to B'nai B'rith Hillel Foundations, 1640 Rhode Island Ave., N.W., Washington, D.C. 20036.



© 1987, Delmarva Power.

Bear Safety In Mind When Buying Children's Toys.

Read all about it in this month's "Energy News You Can Use."

The holiday season is fast approaching and almost all of us will soon have the fun of buying toys for children. But there's more to choosing the right gift than just filling out a shopping list. The fact is some toys aren't appropriate for younger children and may even be dangerous for them to play with. Others may cause damage to a child's hearing. Or have parts that can pinch little fingers. And any child who plays with a toy that operates on electrical current should be taught the proper way to connect it without getting a shock.

This month's Energy News You Can Use gives you some useful guidelines to consider when buying children's toys. It also has some

wonderful energy-saving gift ideas that the whole family will love.

There are even some suggestions for holiday activities you can share with your family that are fun and inexpensive.

So be sure and look for this month's Energy News You Can Use when it comes in your bill. Or pick up a copy at your local Delmarva Power office. It's just one more way we're working to make your holidays brighter — and your life a little better today and tomorrow at Delmarva Power.



Cheryl Axelbott
Editor, Energy News You Can Use

**Delmarva
Power**

Common Ground Between Jerusalem And New Castle County

By DANIEL B. DROOZ
 "New Castle County and Jerusalem are about the same size, have approximately the same population and face many similar problems," according to County Administrator Rita Justice, recently returned from a

meeting of Mayors, County administrators and other local government leaders in Israel.
 Ms. Justice noted that the similarities between Jerusalem and New Castle County are especially apparent in the areas of parks

traffic flow and highways; water distribution, waste disposal, and development. "I'm not Jerusalem mayor Teddy Kolleck. But, I wish I could get away with some of the things he does." Ms. Justice quipped.

The New Castle County administrator was especially impressed with the Jerusalem planning commission's model of the city. They have a real model of Jerusalem, every major building is there in scale. When a new proposal is made, they make a model of the proposed building and place it where it would go, to see how it fits. We are now looking into a similar system for the county, except we'll use a computerized version," Justice noted.

Ms. Justice said the municipality of Jerusalem faces the same funding problems as New Castle County. Listening to Prime Minister Shamir talk to Mayor Kolleck about more funds for municipal services sounded just like Governor Castle discussing finances with me," she said.

"The social and health services were especially impressive in Jerusalem, where

the sensitivities of every ethnic group were honored and upheld. That too is something we could emulate," according to the county administrator.

Ms. Justice also brought home ideas about "halfway houses for senior citizens who aren't ready to resume life on their own but, are not hospitalized, or institutionalized.

Locally, Ms. Justice said it has taken a long time, but the Cities of Wilmington, New Castle and Newark are finally working together with the state and county governments.

"Ideally, we'll have to have a metropolitan government" Ms. Justice noted. It would eliminate several levels of government. It would make life easier and less confusing for everyone. Of the 72 elected jobs in New Castle County, about half would be lost in a regional government." Ms. Justice added, "But the ones that would be lost are the top spots. They are the most difficult to get rid of." The County Administrator said she was willing to be the first to resign if an effective form of regional government was accepted.

"We have to work together with the state to seek additional, non-tax forms of revenue. We should expand the New Castle County Airport's services. Make it a true satellite airport for both Philadelphia and Baltimore."

"We could lease the airport to a private concern. It would be an income earner. The Port of Wilmington needs constant dredging. But, if it was dredged properly and kept at a minimum depth, we could expand revenue from that source too," according to Ms. Justice.

"We're investigating the possibility of bringing in revenue from the Bridge Authority to help finance the port and other services. These would be beneficial to all New Castle County residents, and the state," the county official noted.

Ms. Justice pointed to the leasing, of two, county owned golf courses to private concerns. She said the golfers are pleased with the improved services and courses. The County is earning some small amount of revenue from the projects not spending.

Ms. Justice also voiced concern about the over development in New Castle County.



Rita Justice

Specials From The Ring Leader

SAVE 50% ON DIAMOND EARRINGS AND DIAMOND JACKETS SET IN 14KT. GOLD

- *Diamond stud earrings
1/4 Ct. T.W. ~~\$149.99~~
- 1/3 Ct. T.W. ~~\$199.99~~
- 1/2 Ct. T.W. ~~\$299.99~~
- 3/4 Ct. T.W. ~~\$499.99~~
- 1 Ct. T.W. ~~\$899.99~~
- *1/2 Ct. T.W. Diamond jackets ~~\$389.99~~
- *1/4 Ct. T.W. Diamond jackets ~~\$149.99~~
- *1/3 Ct. T.W. Diamond jackets ~~\$299.99~~
- Love-knot jackets with diamonds ~~\$69.99~~

SAVE 40% ON DIAMOND "TENNIS" BRACELETS... ETERNALLY YOURS

	Regular	Our Price
*Spectacular 14KT. 6 diamond bracelet 2.80 Ct. T.W. (Not Shown)	\$2850	\$1699
*5 Ct. T.W. Brilliant diamonds set in exquisite 14KT. eternity bracelet	\$3500	\$2099
*8 Ct. T.W. Brilliant diamonds set in dazzling 14KT. eternity bracelet	\$5500	\$3299



SAVE 50% ON 14KT. GOLD PIERCED EARRINGS

	Regular	Our Price
*14Kt. Heart	\$40.00	\$19.99
*14Kt. Triple diamond-cut hearts	\$40.00	\$19.99
*14Kt. Fashion hoop	\$75.00	\$35.99
*14Kt. Bark hoop	\$50.00	\$24.99
*14Kt. Fashion hoop	\$80.00	\$39.99
*14Kt. Diamond-cut hoop	\$80.00	\$39.99

SAVE 40% ON 10KT. GOLD GENUINE STONE RINGS

	Regular	Our Price
*Sapphire or Ruby flower with diamond center	\$69.95	\$39.99
*Signet ring	\$69.95	\$39.99
*Amethyst with 14 diamonds	\$175.00	\$99.99
*Rose with diamond	\$100.00	\$59.99
*Diamond swirl ring	\$125.00	\$69.99
*Onyx with 6 diamonds	\$175.00	\$99.99
*Onyx with 4 diamonds	\$235.00	\$139.99

Pick Up Our Sale Brochure At Any Store

HARRIS JEWELERS

309 Branmar Plaza
 1812 Marsh Road
 Wilmington, DE 19810
 Phone: 475-3101

4377 Kirkwood Hwy.
 Almart Plaza
 Wilmington, DE 19808
 Phone: 999-9901

Market Street Mall
 824 Market St.
 Wilmington, DE 19801
 Phone: 655-6253

ACCOUNTANTS BOOKKEEPERS CONTROLLERS EDP EXPERTS

**SKILLED
 PERMANENT**



ROBERT HALF OF WILMINGTON, INC.

Brandywood Plaza — Foulk & Grubb Roads
 Wilmington, DE 19810
 Offices on Three Continents

475-4500

ABRAHAM BAILIS, C.P.A.
 Director

and for emergencies, vacations, special projects

**SKILLED
 TEMPORARY**

accountants bookkeepers edp experts accountemps®

Div. Robert Half of Wilmington, Inc.

Brandywood Plaza — Foulk & Grubb Roads
 Wilmington, DE 19810

475-4500

ABRAHAM BAILIS
 Director

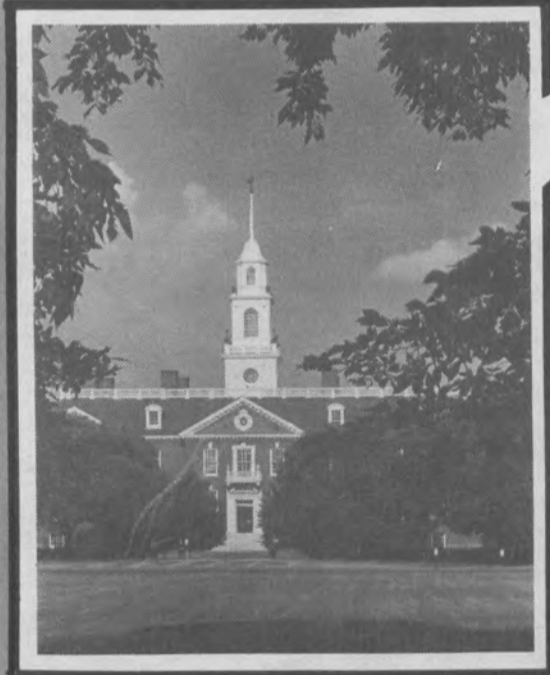
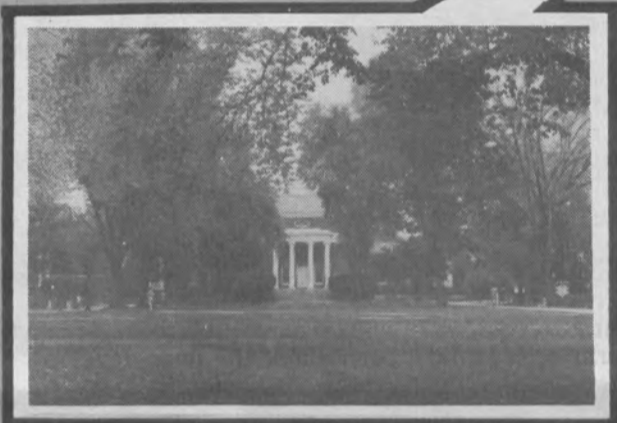


SECOND ANNUAL NEWCOMERS' GUIDE

The JEWISH VOICE

"You heard it in The Jewish Voice"

PUBLISHED BY THE JEWISH FEDERATION OF DELAWARE 101 Garden of Eden Rd., Wilmington, Delaware 19803



We Carry A Full Line
of
Unique Clothing, Handbags
and Jewelry

Bermaine

makeup consultations • facials • hair removal by wax •
manicures • pedicures • ear piercing • custom accessories •
designers costume jewelry • leather bags • evenings bags •

Talleyville Shopping Center
(Concord Pike & Silverside Rd.)
302-478-3063

JEWISH FEDERATION of DELAWARE

The Jewish Federation is the central Jewish communal body for the Jewish community of Delaware. It is the major budgeting, planning, and fund raising body for a host of local, national and overseas agencies. President, Stephan Herrmann, William Topkis and Richard A. Levin, campaign co-chairpersons and Ruth Weinstein, Women's Division chairperson hold the key leadership positions for the 1988-89 campaign year.

The prime objective of the Federation is to serve the needs of the Jewish community at home and abroad. As a voluntary association of several thousand contributors, the Federation hears different viewpoints and perspectives from men and women involved through service on committees, fund raising and on its board of directors.

The Campaign

The major Jewish fund raising in Delaware is the annual Federation campaign which includes men and women volunteers of all ages contacting all Jews in the state. The monies collected are allocated to health, welfare, educational, cultural and relief agencies in Israel, in the United States, in Delaware and the world over.

Training and Programming

As coordinator of agency activities and community relations efforts, the Federation also serves as a programming and training body. One of its main challenges is the task of inspiring and training a dedicated and informed leadership while providing the community as a whole with a continuous flow of updated information. One particularly successful program is the Leadership Development Program. Graduates of the program use their strengthened leadership skills to provide volunteer service to the community.

By supporting local agencies and organizations, the Federation assures the growth and continuity of vital Jewish functions such as Jewish education, care of the elderly, family counseling, resettlement of emigrating Jews, care for the handicapped, Jewish programming for university students and numerous other extended services.

Jewish Singles

A unique opportunity awaits young, Jewish singles between the ages of 21 and 31. Over 280 people have already experienced activities ranging from Happy Hours to Bagel Brunches, picnics to sporting events. Events are scheduled every 4 to 6 weeks. The Jewish Singles group is an excellent opportunity to meet people, network and make friends. If you would like to either participate in or plan activities, contact the Jewish Federation of Delaware, 478-6200.

You Will Love Our Wedding And Party Supplies!

- Paper Plates
- Plastic Cups
- Cutlery
- Balloons
- Napkins
- Catering Supplies
- Party Favors
- Shower Umbrella

Easy In - Easy Out
Off Street Parking

825 N.
Union St.
Wilmington

**Gorland
and Mann** 655-1514

C LASSICS *by City Systems*

Offering a single source for a complete range of elegant residential accommodations—
for a night, a month, or more. Experience a City Systems classic • 655-9914



VICTORIAN SQUARE



THE COURT



GUEST HOUSE



CHRISTINA HOUSE

Newcomers Guide Cover Design and Photo Credits

The Newcomers Guide Cover Design, Wilmington, Newark and JCC photos are by Mark E. Gawel. The Dover and Rehoboth photos are courtesy of the Delaware Development Office.

JEWISH FEDERATION of DELAWARE

Jewish Community Relations Committee

The Jewish Community Relations Committee of the Jewish Federation is the conduit through which information on vital Jewish issues is disseminated to both the Jewish and non-Jewish community. This is accomplished through contact with local organizations, the media, and program presentations.

The Jewish Community Relations Committee operates through a steering committee made up of representatives of Jewish organizations and synagogues. Its work is accomplished through volunteer task forces. Currently there are four: Israel, Soviet Jewry, Interfaith and Hallina Wind Preston Holocaust Education Committee. In addition, an active branch of JCRC exists in Lower Delaware.

Jewish Community of Delaware Edowment Fund

The Endowment Fund established by the Jewish Federation of Delaware provides us with the opportunity to insure the continuation of our present Jewish institutions and their religious, educational and social services and to meet the evolving needs of a changing and growing community. Through bequests and gifts of cash, securities, real estate, life insurance, State of Israel bonds and other property we can make a lasting contribution to the Federation and its constituent agencies, synagogues and other institutions. In this way we are insuring that Delaware will continue to be a good place for Jews and at the same time record our concern and support in perpetuity.

The Jewish Voice

The *Jewish Voice*, the only Jewish newspaper in the State of Delaware, has something for everyone, and we are constantly broadening our coverage.

We provide news and analysis of local, national and international issues, with special attention to the political, economic, religious and social life of the State of Israel. In addition to news coverage, analyses, opinions and features, the *Jewish Voice* offers columns on cooking and Israel, rabbinical columns, and the thought provoking "On the Other Hand." "Dear Rachel," the *Voice's* own version of "Dear Abby," (a service of Jewish Family Service), is a very popular feature, as are periodic book reviews and the "Naches Nook." Further, readers are treated to holiday issues at Rosh Hashana and Passover, and special supplements such as Automotive, Gifts for the Graduate, Bridal and Newcomer's Guide.

Published by the Jewish Federation and run by an editorial committee, the *Jewish Voice* strives to constantly keep abreast of what our readers are thinking.



LEO & JIMMY'S DELICATESSEN

Party Platters, Made to Order
Take-Out Service
Cold Drinks

728 Market St.

6:30-5:30 Mon.-Sat.

656-7151



"Because
You're
Special"

Imagine a fur showing in your own living room. We invite you and your friends to view our exquisite collection of furs at the lowest possible prices.

MAGNIFICENT FURS WHOLESAL
.....TO YOU

For Appointment or More Info

302-762-2529

706 Phila. Pike
Wilmington, DE

LAWAWAY



WELCOME
TO DELAWARE
from the

FEDERAL
BAKE SHOP
of
DELAWARE

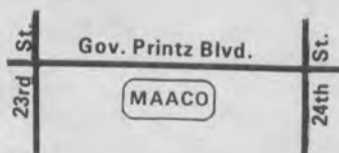
Specializing in
Cakes for Weddings
and All Special
Occasions.

Full Line of Baked Goods

717 Market St.
652-3688



FREE ESTIMATES
EXPERT BODY WORK



1 MILE SOUTH OF MERCHANTS SQ.
2400 GOV. PRINTZ BLVD.
762-5777

MON.-FRI.
8-5:30

\$100

\$100

GIFT CERTIFICATE

THE SUM OF

GOOD THRU NOVEMBER 30, 1987

One Hundred Dollars \$100.00

TO BE USED THE SAME AS CASH TOWARDS
MAACO SUPREME PAINT SERVICE CARS ONLY

REG. \$329.95

WITH THIS COUPON \$229.95

TO
THE
ORDER
OF CASH

BY Craig S. Schlatt

\$100

Coupon must be presented at time of estimate

Not valid in combination with other offers

\$100

**Wilmington
Package Service Center**

"Packing, Wrapping,
Shipping"

3203 Miller Road
Wilmington, DE 19802
(302) 762-0500

Hours: M-F 10 AM-6 PM
SAT 10 AM-2 PM



HISTORICALLY SPEAKING

Delaware was the second of the 13 original American colonies to which Jews were legally admitted. (New York was the first.) The first known Jews in Delaware arrived in 1655, but a community with its own house of worship, cemetery and other communal services did not begin to develop until 1873.

Two factors probably accounted for the presence of not more than a handful of

Jews in Delaware until a generation after the Civil War. One was the remoteness of the greater part of the state from the main North and South travel routes. The other was the proximity of Wilmington, the only large city, to Philadelphia. Because Delaware and Pennsylvania were reckoned as virtually a single state until after the revolution, there were undoubtedly Pennsylvania Jews who had commercial interests in Delaware, but few of them lived here.

At the turn of the century, Delaware's Jewish Committee, the forerunner of the Jewish Federation of Delaware, was established.

The year 1935 marked the establishment of the Jewish Federation of Delaware as we know it today.

While approximately 94% of Delaware Jews are located in and around Wilmington, Dover Jewry has a history going back more than 115 years,

and Newark has been the home of Jewish residents since the early years of the 20th century. There are small Jewish settlements in Middletown and Odessa (both of which once had Hebrew Benevolent Societies), New Castle, Christiana, Glasgow, Seaford and Milford.

In World War II, over 700 Jewish men and women from Delaware served in the United States Armed Forces. The first Delawarean to die was Harry Fineman of Wilmington who fell at the Battle of Corregidor in April, 1942.

The highest statewide elective political office held by a Jew was the Attorney-Generalship, to which H. Albert Young was elected in 1950 and reelected in 1952. He subsequently served as president of the state Bar Association. James Rosbrow was Secretary of Labor. Alexander Greenfield was appointed U.S. Attorney for Delaware in 1964 and Ralph

Welcome To DELAWARE MISTER KLEEN, INC.

Coin Laundry and Dry Cleaning Centers

Midway Shopping
Center

998-7855

Chestnut Run
Shopping
Center

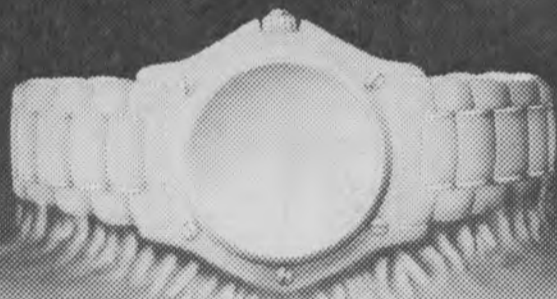
998-7577

Sylvan Taub, President

Graylyn Crest
Shopping Center

478-7950

EBEL
The Architects of Time



-1911-
THE WATCH

Versatile, thin, elegant in stainless steel and 18 kt. gold with diamonds.*
Water resistant. Extremely accurate, very Swiss.
Five year international limited warranty.

Intelligently priced, \$4,800.

Also available in 18 kt. gold.

A. R. Morris
Jewelers



658-4013

802 Market Street
Wilmington, Delaware

*Stainless steel with 18 kt. gold bezel, crown, case screws and interlinks.

The Paper Dolls

party papers, plus...

A full selection of
Hanukkah wrap, paper goods,
decorations and invitations . . .

. . . all at discounted prices.

Shop early for the
best selection!

1711-13 Marsh Road

(Across from Graylyn Shopping Ctr.) Val Encarnacion

478-8234

Glasgow Arms

★ Variety of Entrees:

featuring

- Prime Rib • Live Maine Lobsters • Veal
- Lamb Chops • Crab Imperial

★ Camelot Lounge

- Piano on Weekends

HOURS:

Mon.-Thurs. 11:30-10:30 p.m.

Fri.-Sat. 11:30-11:00 p.m.

Sunday Dinners - 1:30-9:30 p.m.

★ Open Thanksgiving Day for Dinner 1 to 9:30 p.m.
Call ahead for reservations

Intersection of 896 & Rt. 40

368-9495

HISTORICALLY SPEAKING

F. Keil was named to the same post in 1973. Among the lower court Jewish judges were Aaron Finger (1916-20), Robert H. Wahl, Bernard Balick, Carl Goldstein, Herbert Cobin, Roxanna Arshat and Albert Stiftel. Daniel L. Herrmann, a former president of the Jewish Federation of Delaware, has been Chief Justice of the Delaware Supreme Court since 1973. William Penn Frank, a columnist on the Wilmington Morning News for many years, has been a Wilmington newspaperman for more than half a century. In 1973, too, the duPont Co., chose Irving S. Shapiro, a long-time attorney for the firm, as its chairman of the board and chief executive. Henry Topel served as chairman of the Democratic State Committee from 1972 to 1974.

CARPET CLEANING

\$9⁹⁵

Minimum
2 rooms

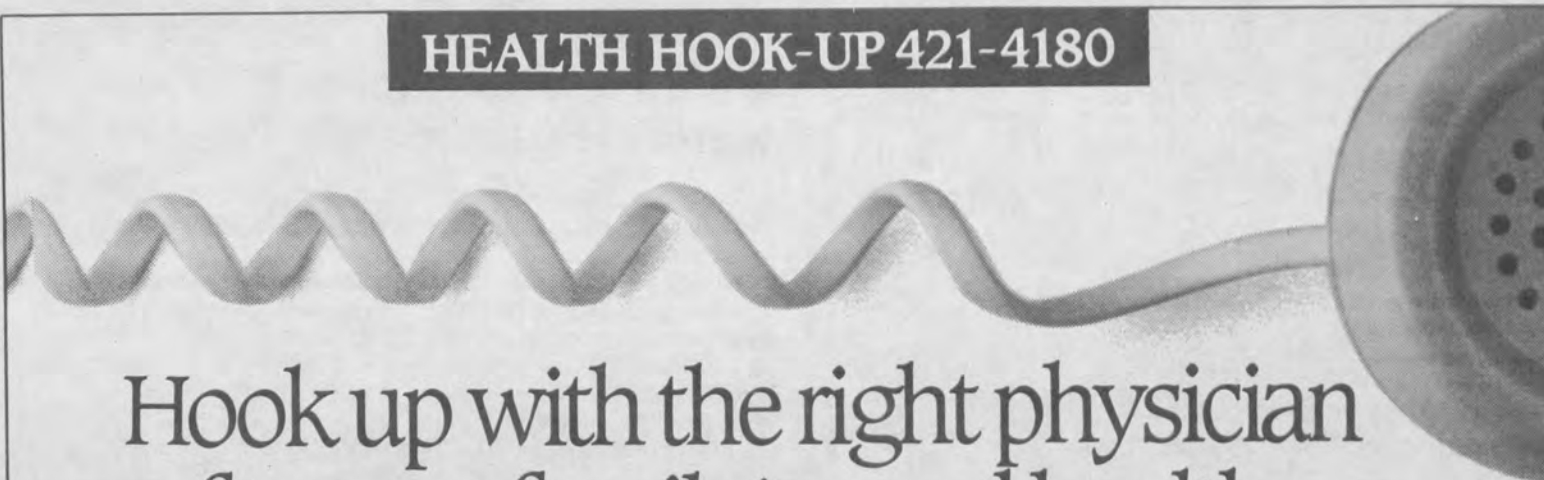
Any Seven
Areas Cleaned

\$89

**CHRISTINA
CARPET CO.**

888-2766

HEALTH HOOK-UP 421-4180



Hook up with the right physician
for your family's good health.

With Health Hook-Up, our new free physician referral service, the gentle care of St. Francis is as close as your telephone. With just one phone call, you can have the facts you need to choose the right physician, right where you live or work.

Our Health Hook-Up representative can give you vital information about the many physicians in all major medical specialties who have qualified for medical privileges at

St. Francis Hospital. You can learn a physician's number of years in practice, medical education, board certification, and acceptance of major insurance plans.

You can also find out whether the physician makes house calls, or provides care to nursing home patients. And, if you like, our representative can forward your call directly to a physician's office so that you can promptly schedule an appointment.

Why wait for an illness to find a physician, when Health Hook-Up is only a phone call away? Just call 421-4180 any time Monday through Friday from 8:30 AM to 5 PM.

The Gentle Care of
**ST. FRANCIS
HOSPITAL**

7th & Clayton Streets • Wilmington, DE 19805

Our Flag is the Best....



and so are our
Statement Savings Rates

6.50%
RATE

6.70%
YIELD

**FIRST FEDERAL
SAVINGS BANK**



MEMBER FSLIC

One Customs House Square, Wilmington, DE
(302) 421-3500

One Custom House Sqre • 201 West Ninth Street • Branmar Plaza • Talleyville Center
• Fairfax • Newark Brewster Drive • Mill Creek • Christiana Mall • New Castle

JEWISH ORGANIZATIONS

Wilmington Montessori Association

THE ARDEN SCHOOL

WE —

- Encourage your child
- Teach positive work habits
- Demonstrate & teach acceptable social skills
- Teach problem solving techniques
- Nurture your child

USING-

- Trained Montessori teachings
- Specially developed Montessori materials
- Year-round programming
- French, music and gym

ACCEPTING APPLICATION FOR THE 1988-'89 SCHOOL YEAR

LIMITED SPACES STILL AVAILABLE

•Ages 2-10

Call 475-0555

2 Sites 7:30 AM to 6:00 PM
Bozware Village Center Arden
Claymont Community Center

Affiliate of American Montessori Society
Marie M. Dugan, Head

We Are Moving
To A 25 ACRE
SITE IN 1988!

Delaware Chapters of National Organizations

B'nai B'rith Lodge #470
President/Contact
Person

Steven Chamish, DDS
1111 Wilmington Road
New Castle, DE 19720
H: 475-7008

B'nai B'rith
Women of Delaware
President/Contact
Person

Barbara Keil
7422 Society Drive
Claymont, DE 19703
H: 798-4794

Chabad Lubavitch
of Delaware
903C Cloister Road
Wilmington, DE 19809
(302)798-9151

President/Contact
Person

Rabbi Chuni Vogel
Chabad-House at the
University of Delaware
629 Lehigh Road
Newark, DE 19711
302-731-4132

Hadassah
Wilmington Chapter
President/Contact
Person

Linda Harwitz

3401 S. Rockfield Drive
Wilmington, DE 19810

H: 478-3229
Hadassah/Sabra Group
President/Contact
Person

Faith Brown
2205 Greenstone Road
Wilmington, DE 19810
H: 475-8065

Hadassah/
Shalom-Chai Group
President/Contact
Person

Ruth Kerbel
2510 Fairlee Road
Wilmington, DE 19810
H: 478-5577

Hadassah/
Newark Chapter
President/Contact
Person

Rochelle Katz
1015 Summit View Drive
Newark, DE 19713
H: 731-4177

Hadassah
Lower Delaware Chapter
President/Contact
Person

Helen Berman
P.O. Box 15
Dover, DE 19903

H: 678-0550

Amy Jaslow
56 Park Haven Road GG 31
Dover, DE 19901
H: 1-678-9614

Jewish War Veterans
Department of Delaware
Israel Weiner
8 Ridgewood Circle
Wilmington, DE 19809
H: 764-2120

Jewish War Veterans
Post #525-Harry Fineman
Norman Robbins
31 S. Dickens Road
Claymont, DE 19703
H: 798-8952

Jewish War Veterans
Post #747-Nathan Balick
Samuel Braxman
302 Shipley road
Wilmington, DE 19809
H: 762-4646

Jewish War Veterans
Post #767-Arthur Blatman
Samuel Geller
310 West 38 Street
Wilmington, DE 19802
H: 764-0636

Hillel
64 East Main Street
Newark, DE 19711
453-0479

President/Contact
Person

Ms. Robin Sesan, Chair
of Advisory
Counselor:
Susan Shifron

Welcome to Delaware...

Bagels & Donuts inc.

ALL PRODUCTS ARE FRESH-BAKED ON
PREMISES EVERY MORNING. 7 DAYS A WEEK.

Under The Supervision Of Vasdha Kashrut
For Baked Take-Out Goods Only!



FEATURING:

- HEARTH BAKED JEWISH RYE
- PUMPERNICKEL BREAD
- CHALLA
- NUTRITIOUS WHOLE WHEAT & OLD-FASHIONED WHITE BREAD
- DELICIOUS CINNAMON BUNS

17 VARIETIES OF
NEW YORK STYLE BAGELS

"Best Bagels..."

Delaware Today Magazine
1985 & 1986

MINI-BAGELS — PERFECT FOR WEIGHT WATCHERS,
KIDS, SNACKS, PARTIES OR ANY TIME.

TWO LOCATIONS TO SERVE YOU

SILVERSIDE & MARSH RD. 1901 PENNA. AVE.
478-9016 652-7960

- SECRETARIAL
- CLERICAL
- WORD PROCESSORS
- TYPISTS
- GENERAL OFFICE
- LAB TECHS
- CRTS
- DATA ENTRY
- DATA PROCESSING
- NO FEES • WEEKLY PAY
- VACATIONS
- HOLIDAY PAY
- 24 HOUR SERVICE

for
temporary
relief

571-8000 **barry temporaries**

DIVISION OF THE BARRY COMPANIES



PERSONNEL CONSULTANTS
SPECIALIZING IN:

- PROFESSIONAL
- ADMINISTRATIVE
- CLERICAL

ALL FEES ASSUMED BY
CLIENT COMPANIES

NEVER A CONTRACT TO
SIGN OR FEE TO PAY

for
permanent
solutions

571-8000

813 WEST STREET
WILMINGTON, DE

barry personnel

DIVISION OF THE BARRY COMPANIES



JEWISH ORGANIZATIONS

Congregations

Labor Zionist Alliance

Thomas Seidel,
Financial Secretary
205 Harvey Road
Claymont, DE 19703
H: 764-8463
Montefiore

Mutual Benevolent Society

I. Paul Drowos
6 Colony Blvd.#209
Wilmington, DE 19802
H: 762-8554

National Council of Jewish Women

Wilmington Section
Jean Blumenfeld
732 Taunton Road
Wilmington, DE 19803
H: 478-3835

ORT

Ilene Sivakoff
133 Jade Drive
Wilmington, DE 19810
478-2098

Wilmington

Traditional:
Adas Kodesch Shel Emeth
Washington Blvd. & Torah
Dr.
Wilmington, DE 19802
Telephone: 762-2705
Rabbi Leonard Gewirtz
Cantor Morris Markowitz
President, John Elzufon

Conservative:

Congregation Beth Shalom
18th and Baynard Boulevard
Wilmington, DE 19802
Telephone: 654-4462
Rabbi Kenneth Cohen
Cantor Norman Swerling
President, Steven Dombchik

Reform:

Congregation Beth Emeth
300 Lea Boulevard
Wilmington, DE 19802
Telephone: 764-2393
Rabbi Peter Grumbacher
President, Manfred Katz

Orthodox:

Machzikey Hadas
c/o B'nai B'rith Building
8000 Society Boulevard
Claymont, DE 19703
Telephone: 792-1545
Cantor Marvin Zukerman
Assistant, Ignac Moskovic
Acting Pres., Jacob Levine

Newark

Reconstructionist;
Temple Beth El
301 Possum Park Rd.
Newark, DE 19711
Telephone: 366-8330
Rabbi David Kaplan
President, Norman Ger-
shman

Dover

Conservative:
Beth Shalom Congregation
Queen and Clara Streets
Dover, DE 19901
Telephone: 1-734-5578
Rabbi Sue Levy
President, Charles Salkin

Sisterhoods — Contact in-
dividual congregations
Brotherhoods & Men's Clubs
— Contact individual con-
gregations

Local Organizations

Brandywine Country Club

4201 Concord Pike
Wilmington, DE 19803
478-2110
President/Contact
Person
Sylvan Taub

Gratz Hebrew High School

101 Garden of Eden Road
Wilmington, DE 19803
President/Contact
Person
Perry F. Goldlust, Esq.
Elaine Friedberg, Principal
H: 762-2692

Jewish Historical Society

Morris Levenberg
306 West 37 Street
Wilmington, DE 19802
H: 762-1323

TREASURE TROVE

- Antiques
 - Gift Items •Collectibles
 - Unique Items For That
Hard to Please Person
- *All At Prices Well Below Retail***

1717 Delaware Avenue
(Behind Buona Pasta)

Wilmington, Delaware

(302) 651-0330

Hours: Mon.-Wed. 10-6
Thurs. & Fri. 10-8, Sat. 10-4

Know someone heading for Delaware? Give them a head start.



If you know someone who's moving to Delaware, you can help make their move a lot easier. Just contact me, Alice Kelley, at Bank of Delaware's Newcomer's Service. I'll be happy to help them get acquainted with our state and send them a free copy of this "Welcome to Delaware" kit.

It's a very useful collection of facts and information about housing, schools, taxes, restaurants, shopping centers, banking services, and much more.

So just contact me at 302-429-1522, send the coupon below, or come into the office at 901 North Market Street. I'll take care of the rest.

Please send your "Welcome to Delaware" kit to:

Name _____
Address _____
City _____ State _____ Zip _____
Phone _____
Date of Arrival _____

Mail to: Mrs. Alice Kelley/Newcomer Department
Bank of Delaware Market Tower Office
901 North Market Street
Wilmington, DE 19801

BANK OF DELAWARE
Delaware's Bank

Member FDIC

CopyGraphics Printing

4010 Concord Pike
Wilmington, DE 19803
(302) 478-1135

- Custom & Color Printing
- High Speed Duplicating
- Copying
- Numbered Tickets
- Office Supplies
- Spiral Binding
- Folding
- Collating/Stapling
- Business Cards
- Wedding Invitations
- Typesetting

Invitations - Announcements
Stationery - Business & Social
Party Accessories
Personalized Items, Etc.



"The Finest Selection
of Exclusive Papers
and Gifts"

Charlotte Fischer 656-8604

PARTYLAND

Party Supplies
Paper Products

- Decorations • Invitations
- Paper Products • Thank Yous
- Napkins • Paper Plates • Cups
- Tablecloths • Coasters and more.

**A Complete Line Of Hanukkah
Supplies Available At
LOW DISCOUNT PRICES**

Midway Plaza

Corner of Kirkwood Hwy. (Rt. 2)
& Limestone Road (Rt. 7)
Wilm., DE

Mon.-Thurs. 10-6, Fri. 10-8, Sat. 10-5
NOW OPEN SUNDAYS 11-3
'TIL HANUKKAH
999-9519

FEDERATION AGENCIES

Jewish Community Center

101 Garden of Eden Road
Wilmington, DE 19803
(302) 478-5660

The Jewish Community Center, a membership organization and a communally-concerned institution, provides the Delaware Jewish community with diverse and extensive services. The Center offers its members and its community a central place in which, as individuals, whole families, groups, or organizations, they can best express their interests and have their social, intellectual, cultural or recreational needs met.

The Center provides Jewish educational programs, holiday celebrations, Jewish cultural and arts programs of Jewish communal interest sponsored by the Jewish Federation. In addition, the Community Center offers its facilities to an ever enlarging number of Jewish organizations who use its building for their programs and services. Judy Levy is president of the JCC. Some of the specific activities sponsored by the Jewish Community Center are:

- Pre-School and Day Care
- Children's classes and play groups
- Teen youth groups, lounges, socials, trips, classes
- Extensive health & physical education programs
- Raquetball courts
- Tennis courts
- Full aquatics programs
- Jewish lecture series, films, cultural arts
- Jewish holiday celebrations
- Art Gallery
- Senior Center with meals, programs, trips
- Jewish Life Educations programs
- Summer Day Camp

Milton and Hattie Kutz Home

704 River Road
Bellefonte
Wilmington, DE 19809
(392) 764-7000

President/Contact
Person
David S. Hefter

Kutz Home Auxiliary
Faith Goldman

The Kutz Home offers its residents the security of a comprehensive medical, nursing, religious, recreational and social program. The Home is geared toward maximizing the individual resident's living satisfactions through meaningful and enriching activities. Where possible, residents are involved in community programs in addition to the many and diverse on going refurbishin — now nearly 30 years old.

Located in a picturesque setting, the Kutz Home is a modern and attractive facility. Funds raised by the Kutz Home Auxiliary enable ongoing refurbishing — now nearly 30 years old.

Food service at the Home is supervised by a *Mashgiach* to assure *kashruth*. Sabbath and holiday services are conducted in the Home's synagogue. The Kutz Home is licensed and accredited by government regulatory agencies as an intermediate and a skilled nursing facility, and participates in the *Medicaid* program. Admission to the Home is based strictly on need; inability to pay for care is never an obstacle. Lay leadership includes: David Hefter, Kutz Home president; Faith Goldman, Auxiliary president.

B'nai B'rith Hillel

B'nai B'rith Hillel has a presence on the University of Delaware campus 300 students strong. Currently they hold several activities a week, providing a mix of social, cultural, religious and educational programs. Programs include: bagel and lox brunches, Shabbat dinners, weekly Kabbalat Shabbat services, movie nights, trips to nearby cities, and Israel nights. In addition to regular events and programs, students this year were able to attend high holiday services on campus. Steady growth of this organization will soon necessitate a move to larger facilities.

Federation Agencies continued on page 9



Herman's Quality Meat Shoppe, Inc.

64 East Cleveland Avenue

Newark, Delaware 19711

Telephone 302-731-5344

Monday Thru Thursday 9:00 to 5:30

Friday 9:00 to 7:00, Saturday 9:00 to 5:00

For the best craft
shop in Wilmington...
featuring handcrafts...
folk art... clothes...
jewelry... accessories.



ARTISANS 111

715 Market St. Mall
656-7370

FEDERATION AGENCIES

Jewish Family Service

Jewish Family Service offers a range of services for Jewish individuals and families.

Special Services To The Elderly

Services include counseling, friendly visiting, monitoring, linkage to needed

services and case management.

Individual And Family Counseling

The Jewish Family Service offers skilled professional counseling in dealing with personal and family pro-

blems such as marital difficulties, parent-child relationships, mental and physical health, individual adjustment and changes in life situations.

Jewish Family Life Education

Group discussion designed

to enable individuals and families to better cope with phases of normal development and situational stress. These programs also promote the growth of Jewish identity and the Jewish family and community.

Even Our Tough Customers Get Tender Care.



The Gentle Care of St. Francis.

Sometimes, the biggest showdown in a young cowboy's career is when he takes a tumble. That's why in New Castle County there's a hospital committed to treating even life's little emergencies with an extra measure of care — St. Francis Hospital.

Last year, nearly 40,000 of your neighbors chose St. Francis for emergency services. Why? Because St. Francis combines the most modern emergency medical practices with personal care, 24 hours a day, every day. We show our concern as soon as you arrive. Indoor parking is conveniently located adjacent to the Emergency Center's door. Once inside our Emergency Center you'll discover our newly remodeled patient reception area to serve you better.

You'll discover a team of dedicated doctors and nurses that is highly trained in emergency medicine, including certification in advanced trauma and cardiac life support. Our emergency team members possess other special skills too — the desire to care as well as to cure, to coax a smile from a tearful child, to

talk with you and share your concerns.

And because we feel that a scraped knee shouldn't cost you an arm and a leg, we make certain your charges are reasonably priced.

If you would like more information about the Emergency Center at St. Francis Hospital, please call 421-4177. Complete and return the coupon, and we'll be happy to send you a first aid poster to help you care for minor emergencies at home, a gift from our family to yours.



The Emergency Center At
ST. FRANCIS HOSPITAL

7th & Clayton Streets Wilmington, Delaware
(302) 421-4177



Yes, please send me a FREE St. Francis first aid poster for life's little emergencies!

NAME _____

ADDRESS _____

CITY _____

STATE _____ ZIP _____

Mail to: The Marketing Department
Saint Francis Hospital, 7th & Clayton Streets,
Wilmington, DE 19805.

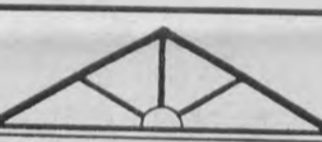


GOURMET-TO-GO

- Caviar
- French Pates
- Salads • Cheese
- Smoked Products
- Breads
- Crossants
- Special Cakes
- Gift Baskets
- CATERING

Complete Eat-In and Take-Out Menu

Talleyville Shopping Center
3629-D Silverside Road
Wilmington, DE 19810-5101
(302) 478-4344



the Office

Introducing . . .
the Office

. . . professional support for the independent business person.

SUZANNE JONES, PRESIDENT

- Furnished offices — hourly, daily, weekly
- Secretarial services
- Business telephone systems
- Mailing
- Copying
- Filing space
- Computer
- Conference room
- Complimentary news publications and coffee

1701 Shallcross Avenue
Suite A
Wilmington, DE 19806
651-9450

We're New Too! (from Florida) Bags & Things Wholesalers

- Selling Wholesale to the Public
- Designer Leather & Designer Copy Vinyl Handbags
 - Designer Copy Watches for Men & Women
 - Gift Items

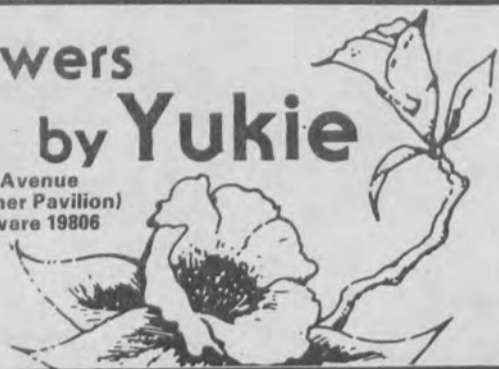
☆ **ALL WHOLESALE** ☆
798-1207

Call for a private showing
7122 Society Dr. Claymont, DE
Look for our booth at the JCC Hanukkah Hoopla on Dec. 13 and the Beth Shalom Bazaar on Dec. 2.

flowers by Yukie

2006 Pennsylvania Avenue
(Michael Christopher Pavilion)
Wilmington, Delaware 19806
302-658-8292

Holland &
Exotic Flowers



CHAB-ADLUBAVITCH of Delaware

Serving the Jewish Community with Adult Education, Mitzvah Campaigns, Holiday Awareness, Campus Outreach and Activities, Champlancy Service, Bikur Cholim, Counseling, Study Groups, Dial A Jewish Story, Sr. Citizen Services, Publications, Sukkahmobile, Kosher Week, Speakers Bureau, & Lecture Series.

CHABAD-LUBAVITCH of Delaware
903-C Cloister Road
Wilmington, DE 19809
(302) 798-9151

EDUCATION

Albert Einstein Academy

101 Garden of Eden Road
Wilmington, Del. 19803
478-5026

Roselee Redelheim, Principal; Robert Rosen, President

The Albert Einstein Academy is a Hebrew Day School providing an outstanding secular as well as Jewish education. Small class sizes allow for enviable teacher:pupil ratios and maximum individual attention.
Grades K. through 6

Gratz Hebrew High School

101 Garden of Eden Road
Wilmington, Del. 19803
478-5026

Elaine Friedberg, Principal; Perry Goldlust, President

Delaware Gratz provides a five-year program of Jewish studies on a secondary level which includes Hebrew language and literature, Bible, Jewish history, ethics and issues. High school and college credits as well as teaching certificates are granted to those who complete the curriculum.

Sundays 10 a.m.-1 p.m.

Tuesdays and Thursdays 7 p.m.-9:10 p.m.

All Delaware synagogues except Machzikey Hadas have religious school programs. Contact the individual congregation for information about these religious schools.

The Judaic Workshop

The Judaic Workshop — a little known program. The Judaic Workshop provides a Jewish educational experience to educationally exceptional young adults who have learning disabilities and who could not be served by congregational religious schools. Presently housed at Adas Kodesch Shel Emeth, a Jewish enrichment program is held every week for those who would not otherwise have any Jewish education.

For more information contact Helen Gordon at (302) 762-2705.

Ki Tov Classes

Ki Tov is a program for children who cannot be mainstreamed into regular afternoon class, but who also do not belong in the "Judaic Workshop for Exceptional Children." The children enrolled in this program are capable of learning about themselves as Jews and about Holidays, Bible and language, but must be taught in a small class setting using individualized instruction and attention. In the past, Jewish education for these children has been neglected. The program is financially supported by the Jewish Federation of Delaware.

For more information contact Helen Gordon at (302) 762-2705.

GROSS LIGHTING

The Ones to Call For....



• Electrical Supplies and Free Lighting Decorator Service
• Bulbs • Lamp Repair

- Whether You Are Building a New House or Fixing Up The Old One, We Offer Whole House Discount Packages

Gross
Lighting Center

Since 1919

655-5561

Discount Lighting Center
4th & Orange Sts.
Wilmington, Delaware

near Market St. Mall —

Across from Del-Tech in the Heart
of the Christina Gateway

6 upstairs showrooms for browsing

OPEN 8 a.m. til 5:30 p.m. Mon. thru Fri.; Wed. til 9,
Sat. 9 to 3 p.m. — Other hours by appt.

USE OUR LAYAWAY
USE YOUR CREDIT CARDS

For A Fabulous Party
or
Affairs
TRY US

Elegante-Catering

GO WITH THE BEST!!

(Delaware's Kosher Caterer)

Howard Cohen
1708 Namans Rd.
Wilmington, DE 19801

GRAND OPENING

CRAZY CLOSEOUTS

- ☆ 50-90% OFF DEPARTMENT STORE NAME BRAND MERCHANDISE
- ☆ WE ARE NOT RETAIL NOT WHOLESALE
- ☆ WE ARE DELAWARE'S FIRST CLOSEOUT LIQUIDATORS.
- ☆ CLOSEOUTS ARE:
 - FACTORY OVER-RUNS
 - OVER-SHIPMENTS
 - DISCONTINUED MERCHANDISE
 - BANKRUPTCY

New Merchandise Arriving Weekly!

WE FEATURE
 COSMETICS, TOYS, GIFTS, HOUSEWARES, HARDWARES AND MUCH, MUCH, MORE, AT THE LOWEST POSSIBLE PRICES ANYWHERE TO BE FOUND!

CRAZY CLOSEOUTS

THE FUN & SMART WAY TO SHOP
351 COLLEGE SQUARE, NEWARK, DELAWARE
 (NEXT TO BRADLEES)

Are you throwing your money away on checking accounts?

Then it's time you looked into Check Club. The interest-bearing checking account that's free with a minimum balance of \$100.*

If you're paying a monthly service charge for an ordinary checking account, you're throwing your money away.

With a Check Club account, you can earn interest on your entire checking balance FREE when you maintain a minimum balance of just \$100.

You'll also receive \$100,000 in accidental death insurance for travel on scheduled airlines and other common carriers.

And when you travel, you can save over \$2,000 with Check Club discounts redeemable at major motels, restaurants, entertainment sites and car rental agencies across the country.

If you run out of money when you're away from home, you can use your Check Club account and a Visa or MasterCard to get cash from any of the 5,000 emergency cash advance centers nationwide.

You'll also receive free credit card protection, a free registered key ring and a quarterly financial newsletter.

Stop throwing away money on an ordinary checking account. Open a Check Club account with us today.

**No service charge is incurred when you maintain a minimum balance of \$100.*



Call 421-3500

Member FSLIC



Regional Cultural Events Of Note

B'nai B'rith Klutznick Museum

1640 Rhode Island Avenue NW
Washington, DC 20036
(202)857-6583

Hours:
Sunday - Friday, 10:00 a.m. - 5 p.m.
October 6 - January 31, 1988:

Arnold Eagle:
Photographs 1930-1950
Masters of Ceremony: New Judaica by Contemporary Designers
Permanent Exhibit:

Ceremonial and folk art spanning 2,000 years of Jewish life

The Jewish Museum

1109 Fifth Avenue
New York, NY 10128
(212) 860-1889

Hours:
Sunday, 11:00 a.m. - 6:00 p.m.
Monday, Wednesday, Thursday,
12 noon - 5:00 p.m.
Tuesday, 12 noon - 8:00 p.m.

September 1 - December 1:
Woman of Valor: The Story of Hadassah, 1912-1987
September 13-January 14, 1988:
The Dreyfus Affair: Art, Truth,

and Justice
Permanent Exhibits:
The Holocaust: Sculpture by George Segal
Israel in Antiquity: From David to Herod
Coins Reveal Programs of the National Jewish Archive of Broadcasting

National Museum of American Jewish History
55 North 5th Street
Philadelphia, PA 19106
(215)923-3811

Hours:
Sunday, 12 noon - 5:00 p.m.
Monday - Thursday,
10:00 a.m. - 5:00 p.m.
To December 31, 1987:

A People in Print: Jewish Journalism in America
We, the Jewish People: Jews and the American Constitution
The Isaiah Scrolls
To April 1988:
The American Jewish Experience, 1654 - the Present

Yeshiva University Museum
2520 Amsterdam Avenue
New York, NY 10033
(212)960-5390

Hours:

Sunday, 12 noon - 6:00 p.m.
Tuesday - Thursday,
10:30 a.m. - 5:00 p.m.
To July 1988:

Lights of Creation (prepared by the Center for Advanced Visual Studies at Massachusetts Institute of Technology)
Mordecai Manual Noah, the First

American Jew
Bat Zvi: The Fabric of Life
Ashkenaz: The German Jewish Heritage

Permanent Exhibit:
Ten architectural models of the world's major synagogues, 3rd century - 19th century C.E.

Lloyd Street Synagogue*

Jewish Heritage Center
11-27 Lloyd Street, 21202.
Maryland's first synagogue building, third oldest extant in U.S., built 1845, and B'nai Israel Synagogue* built 1875; both restored by Jewish Historical Society of Md. Between these historic houses of worship a museum/library/gallery facility with offices of the Society will open June '85. Oct.-June, 1st and 3rd Sundays 1-4 p.m. or by appointment. Call 358-9417.

MUSEUM HOSTS TRIP TO THE NYC BALLET'S "THE NUTCRACKER"

The Delaware Art Museum will sponsor a trip to see the New York City Ballet's production of "The Nutcracker" on Thursday, December 10, 1987. The cost of the trip is \$73 for Museum members and \$83 for non-members and includes round-trip transportation by deluxe motorcoach and ticket to the performance — the best seats in the house!

DELAWARE ART MUSEUM TO SCREEN THE FILM "KOYAANISQATSI"

In conjunction with the exhibition, "The World is Round: Contemporary Panoramas," the Delaware Art Museum will screen the film "Koyaanisqatsi" (U.S., 1983, C, 87 minutes) at 8 p.m. on Tuesday, November 24 in the Museum's auditorium. Admission is \$3 for Museum members and \$4 for non-members.

Life Gets Tougher

Trying to reach us at the Federation or the Voice gets more difficult. Construction on the Family Campus closes the side entrance to the Federation Building occasionally and randomly. You can reach us by going into the JCC, circumventing the pool, walking the corridor and down the stairs. If the weather is OK, try crossing the atrium, between the JCC and Federation offices.

With the coming of winter, the days are shorter. Ap-

propriately, Shabbat comes earlier. That means our offices close sooner. Here are our FRIDAY CLOSING HOURS: November 4:30 p.m. (1630), December, January, February 4 p.m. (1600).

Things get strange again in March. But, we'll worry about that next year.

Candle Lighting Times for Shabbat

Nov. 20 — 4:22; Nov. 27 — 4:18; Dec. 4 — 4:16; Dec. 11 — 4:16; Dec. 18 — 4:18; Dec. 25 — 4:22; Jan. 1 — 4:27.

Our Lowest Life Insurance Rates Ever Come With A Guarantee

If you're tired of having to shop around every year for low life insurance rates, of filling out lengthy applications, and of taking time-consuming physicals more often than you need to, Transamerica has the solution.

It's called Trendsetter 20® and it's not only convenient, it's affordable. The rates are guaranteed for 10 years.

*The Power Of The Pyramid
is Working for You*



**WHEN
YOU WANT
HIGH YIELD
ANNUITIES**

FRANK KESSELMAN, CLU.
TRANSAMERICA INSURANCE
SERVICE

First-Year Annual Premiums for \$250,000
(Nonsmoker, paid on annual basis)

TRENDSETTER 20 POLICY

Issue Age		1st Year Premium
35	Male	\$240
	Female	235
40	Male	290
	Female	250
45	Male	368
	Female	320
50	Male	470
	Female	400

In Delaware: 302-475-2250

In Pennsylvania: 215-459-5323

*Graded Premium Life Insurance to age 100. Premiums increase annually. Nonparticipating. Not available in all jurisdictions.

Yes! Tell me how to take advantage of Trendsetter 20's low rates and 10-year guarantee!

Name _____

Address _____

City _____ State _____ Zip _____

Phone _____ Date of Birth _____

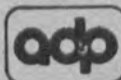
Smoker Yes No Insurance Broker Yes No
Transamerica Occidental Life Insurance Company
2000 Foulk Road
Foulk Road Office Park Plaza
Wilmington, DE 19810

Transamerica
Life Companies
Transamerica Occidental Life Insurance Company
Working together is the best policy.

Philip Berger

Associate Broker
Residential...Commercial

Weichert



Realtors®

3302 Concord Pike
Wilmington, DE 19803
Office: 302-478-3800
Res: 302-764-8384

VISIT OUR SHOWROOM

Fuji, Lotus, Ross, Shogun
Mongoose, Motobecane, ATB, Nishiki
Skateboards & Clothing - BMX Products - Scooters

We have Cool-Max Cycling Clothing
• Vans • Airwalk • Vision Shoes

SALES • PARTS • ACCESSORIES • REPAIRS

HENRY'S BICYCLE SHOP 2901 Lancaster Ave.
Wilmington, Del.
654-0361 • 571-0517



TEMPORARY SERVICES

WE KNOW HOW TO HELP

WILMINGTON 575-1700
NEWARK 738-3500
CONCORD PLAZA 478-6110
DOVER 1-734-5379
Gilbert J. Spiegel Founder Pat Spiegel Chalphin President

THE

LIMOUSINE

24 HOUR SERVICE

Formal Chauffeurs For All Occasions
• Tent Rentals Available For Lawn Parties

(302) 762-1994

Don't Rollover Your CDs

... until you talk to Legg Mason
about alternative investments
which could yield a greater return.

If you are thinking about rolling over
your Certificate of Deposit, you don't have
to settle for lower bank rates.

Legg Mason can show you some
alternative investments which could yield
a better return. Call today and ask... "What
are my alternatives to low CD rates?"

Martin Zukoff / Investment Broker
(302) 575-1717



Legg Mason Wood Walker, Inc.
MEMBER NEW YORK STOCK EXCHANGE, INC. • MEMBER SIPC
AN INVESTMENT TRADITION SINCE 1899

Marine Midland Plaza 824 Market Street
Wilmington, DE 19801

UN War Crime Commission To Open Nazi Files

By MARK JOFFE

NEW YORK, (JTA) — The 17 former member states of the Allied War Crimes Commission have finally agreed to a plan to open its files on more than 40,000 Nazi war criminals to public inspection. Eyal Arad, a spokesman for the Israel Mission to the United Nations, said in a telephone interview Sunday that the mission had not been informed of the news, but had been able to confirm reports about the commission's decision that appeared Saturday in the New York Times.

"The secretary general is not bound by any recommendations" of the commission, Arad said. But he added that Perez de Cuellar "told us that he wants to open the files. There's no point in dragging his feet any further," he said, now that the commission has decided.

Until now, the files of the long-defunct War Crimes Commission have been accessible only to the governments of member states of the United Nations. Israel has been pressing for some time that they be open to scholars,

researchers, writers and journalists.

Initially, most of the 17 former member states of the commission were opposed. One by one they fell in line, however, and after several meetings over the last two months unanimous agreement was reached on a formula for public access.

Under the reported plan, responsibility for granting access will be transferred from the secretary general to the United Nations member governments, which will be free to authorize their citizens to inspect the files, stored at the United Nations archives on Park Avenue South, Manhattan.

'Important Victory' For Israel

Commenting on the commission's decision, Binyamin Netanyahu, ambassador of Israel to the United Nations, said, "This is an important victory over those who would distort and deny the terrible truths mankind should never forget if it is to retain its humanity."

Responsibility for the files was transferred to the United

Nations in 1948, after the War Crimes Commission completed its investigations.

Israel's campaign gained momentum when Kurt Waldheim, a former secretary general of the United Nations, was elected president of Austria in the summer of 1986, after a campaign during which Jewish groups, mainly the World Jewish Congress, exposed the Nazi past which he had concealed for 40 years.

Waldheim is one of the 25,000 names on the list of so-called Class A suspects in the war crimes file against whom the commission felt it had sufficient evidence to prosecute.

The list provides one-line summaries of the background of the suspects and the accusations against them.

Arad said the opening of the files will facilitate the prosecution of wanted Nazi war criminal Alois Brunner who now lives in Syria. The Syrian government has refused to comply with an extradition warrant issued by the West German government years ago.

The NAME Is The Game

By ROBERT AKELL

In a box of random letters seek the answers for the game this week. They can go in any direction. So use a pencil, unless your name is perfection. Draw a loop around each city and town.

Here's a list. No need a map be found. The answer will be in the next edition. Where you'll find a new game to test your knowledge of Jewish Tradition.

acre
bethlehem
gaza
jaffa
lod
nablus
netanya
sodom

ashod
caesarea
haifa
jericho
maalot
nahariya
rehovot
telaviv

beersheba
eilat
hebron
jerusalem
masada
nazareth
safad
tiberias

CITIES IN ISRAEL

K Y X C T D C S W I J C G M Y
J D S A A A B S U K A I A S L
F E L M D E A E U L J F A M H
R I R A E I S H E E B F F E E
E T S I R H N A R R A A B A R
C A O E C E E U R D S R N G J
M H B V T H S L A E O H F T B
W I U A O A O N H N A A E Q K
T R N X L H T T A T A P C B A
G Y I E A E E D M H E S I R A
A F M I L R Y R O A A B H K E
S D F A A N O H W L A R Y O S
S A V Z R Q M O D O S L I E D
L I A Z U P G A Z A P Y O Y S
V N V R V I H N U O F M A T A

Memorial Dedicated

September 27 — A monument in memory of the victims of the Holocaust was dedicated at the annual Beth Emeth Community Memorial Service, at Beth Emeth Memorial Park, Wilmington. It is believed that this is the only private Holocaust memorial in the US.

The black granite stone is inscribed "We Remember the Martyrs of the Holocaust 1933-1945." This is followed in Hebrew with the word "Yizkor."

Rabbi Peter Grumbacher, dedicated the stone saying "We have had martyrs since the Maccabees fought the Assyrians. But we have not glorified martyrdom. 'The prophet Habbakuk said, 'The righteous shall live by his faith,' and across the centuries the rabbis have used this verse to support their belief that we can not follow the tendency of other traditions to praise men and women who seek death in the name of their religious principles."

Beth Emeth's spiritual leader noted, "This simple monument will stand long after all of us are gone. It will be a symbol for future generations, that once a people sought the



Holocaust Memorial in Beth Emeth Park

systematic destruction of our people. "Hopefully," Rabbi Grumbacher added, "future generations will recognize the incomparable tragedy of the Shoah and learn from it."

Slave Laborers To Be Compensated

By HUGH ORGEL

TEL AVIV (JTA) — The Daimler-Benz Co., of West Germany, manufacturers of the Mercedes, will pay compensation to slave laborers it employed during World War II when it built tanks and other mobile equipment for Hitler's army, a company spokesman announced in Haifa this

week. Many of the slave laborers were Jews.

Bernd Gotschalk, chief of public relations for Daimler-Benz, spoke at ceremonies at Haifa University inaugurating the Gottlieb Schumacher Research Center, established at the university with a quarter-million-dollar grant from Daimler-Benz.

Return From Babylon

The Jewish population of Iran has dropped more than 50,000 since the fall of the Shah in 1979.

Austrian officials report more than 5000 Iranian Jews have passed through Austrian refugee facilities since the Khomeini regime took over Iran. And more than 1400 have passed through this year alone.

Iranian exile groups, opposed to Khomeini regime, also charge that more than 2000 Iranian Jewish youths have been forcibly conscripted into the Iranian armed forces. Jews were not required to serve nor were they conscripted under the Shah.

The exile groups also charge that 120 Iranian Jews were flogged for "drinking wine at a wedding" earlier this year.



We will never compromise on Quality

Fresh Daily
Fish • Shrimp • Crabmeat
Scallops • Lobster • Oysters • Clams
Homemade Seafood Platters, Sandwiches, & Soups
to Eat-In or Take-Out

Offers some of the best take-out seafood in the area. Few places match Alexander's consistent freshness."

Al Mascitti, Readers Choice

475-7000 OR 475-FISH

Branmar Plaza Mon.-Thurs. 10-7 PM
Marsh & Silverside Rd. Fri. 10-8
(5 Doors to Right of Theatre) Sat. 10-6:30



**Suede & Leather
Repairs & Alterations**
Fairfax Shopping Center
Route 202 (Concord Pike)
652-6725



cookware & utensils, plus
a healthy dash of how-to!

creative cooking

christiana mall 366-7484
branmar plaza 475-0390

The Taxman cometh.

Make him waiteth.

How long? Until your heart desires! With a First Service Corporation Tax-Deferred Annuity, the government won't get a cent until you withdraw your funds. A TDA is ideal especially if you're retired.

And while the taxman's cooling his heels, your cash could grow by double what taxable investments pay. That's because your TDA grows tax-free. It also grows with some of the highest rates around. In fact, the interest on a TDA is consistently higher than money market rates.

Your TDA is an excellent source of retirement income. And because it bypasses probate, it's an ideal estate planning tool.

To open your TDA, call Timothy DeBoda at 737-2780 or Roger Palmer at 421-3531. The sooner you calleth, the longer the taxman waiteths.

TAX-DEFERRED ANNUITY EQUIVALENT YIELD TABLE

Your marginal tax bracket (state & federal)	7.50%* tax-deferred yield equals approx. taxable yield of:
28% (28-\$45,000)†	10.42%
35% (45-\$90,000)†	11.54%

*7.50% used as example only
†Married couple



Tax-Deferred Annuity

Fairfax Shopping Center
Wilmington, DE 19803

281 E. Main St.
Newark, DE 19711

First Service Corporation is a subsidiary of First Federal Savings Bank (of Delaware).

WHY BE ALONE?

... pick up the phone and call

JEWISH DATING SERVICE

You Just May Meet The Right Person

Effective • Inexpensive • Reliable • Tri-State

Call/Write - FREE QUESTIONNAIRE
P.O. Box 14393, Phila., Pa. 19115

215-342-9951

**The Brass Anvil**

Antiques & Collectables Restored and Repaired
Polishing & Lacquering Service
Brass - Copper - Silver - Tin & Pewter
Tinsmith & Coppersmith Service
Free Estimates, Free Pickup and Delivery

Call 792-2744 Shop- 9-8

Call 798-1859 Residence

12 to 6 p.m. weekends

1404 Ridge Rd. - Wilm., DE 19809

PLACERS · TEMPS ·**PLACERS · TEMPS ·****PLACERS · TEMPS ·**

A Division of The Placers, Inc.

200 Pennsylvania Ave.
Wilmington, DE
302/571-TEMPChristiana Executive
CampusRt. 7 & Churchmans Road
302/366-TEMP2 Righter Parkway
Delaware Corporate Center
U.S. 201302/479-TEMP
Granite Run Office Plaza
Suite 101(Behind Toys 'R' Us)
215/891-TEMP**Have it ALL!**

Open Saturday 10-4/Sunday 12-4

Thomas West House

- Fashionable elevator building
- 24-hour doorman
- Full size washer-dryer in every apartment
- Large balconies
- Dusk-down on-site security patrols
- Stunning new lobby
- Cable TV
- 2 pools, 3 tennis courts
- Fully equipped exercise room
- Complimentary exercise classes twice weekly
- Private relaxing sauna and social room w/large screen TV

Rental Office:

Society Hill • 7000 Society Drive

¼ mile west
on Naamans Rd.
from I-95

798-8500

Stoltz
MANAGEMENT CO.
Naches

Danielle Amy Lipman - October 30, 1988. Daughter of Karolin & Mark Lipman. Grandparents - Mr. & Mrs. Edward Lipman, Mr. & Mrs. Zoltan Spitzer; Great grandparents - Mr. & Mrs. Herman Meritz.

Barry Price, son of Mr. & Mrs. Lawrence Price, and Vicki Hinzman, daughter of Mr. & Mrs. David Hinzman, all of Wilmington, were wed on Saturday evening, November 7th, at Temple Beth Emeth. Rabbi Peter Grumbacher officiated. The groom is a graduate of Concord High School, and is now Co-owner of Price Motors Inc. The bride is a graduate of Concord High School, and is a Collections Counselor for PNC bank.

Carol Braunstein, daughter of Mr. and Mrs. David Braunstein, is engaged to Dr. Ross M. Ufberg, son of the late Dr. and Mrs. Saul Ufberg.

Elana F. Harwick and Brian S. Miller were married October 25 in Adas Kodesch Shel Emeth Synagogue, Wilmington.

Their parents are Mr. & Mrs. Richard D. Harwick of Wilmington and Arthur Miller of Silver Spring, Md.

Their grandparents are Mr. & Mrs. Philip Liebman of Wilmington and Ida Goodman of Silver Spring.

The bride and groom are both graduates of the University of Maryland. The couple will live in Silver Spring.

Announcements

WASHINGTON, D.C. B'nai B'rith Women is offering program materials designed to help the Jewish community combat the dangerous trend of "JAP baiting" on college campuses.

The BBW program, called "Image of the Jewish Woman: Myth and Reality" is designed to help both men and women in the Jewish community see the danger inherent in these stereotypes, and go beyond them to define who Jewish women really are today. The program consists of an audio tape, discussion guides, and other materials on four different topics: stereotyping of Jewish women; Jewish women and values; the role of Jewish women in immigration and assimilation into American culture; and the affect of stereotypes or relationships between Jewish men and women.

The program is available

on loan from BBW's 15 regional offices, and can be purchased for \$20 plus \$4 postage and handling from: B'nai B'rith Women, Program and Public Affairs Department, 1640 Rhode Island Avenue, N.W., Washington, D.C. 20036.

Eligius Centers To Open

Eligius Centers, Inc. an organization dedicated to establishing living arrangements for the disabled, to improve their quality of life, has begun to organize in Delaware, helped by a grant from the Kutz Foundation.

The Eligius Centers are community based housing, in a structured and supervised environment, that offers residents an opportunity for a reasonably independent life.

The Eligius Centers help disabled individuals adjust through work training so that they become contributing members of society, rather than dependents. At the same time, the centers provide a support through their own social environment, and professional counseling.

Eligius Center hopes to find a home site by the spring of 1988 and have its first occupants moved in by next autumn.

Judy Seltzer can be reached at 478-4885 if you can help.

AKSE Party December 31

The Adas Kodesch Shel Emeth Sisterhood is now opening reservations for a "December 31st Gala" affair to be held in the Social Hall of the synagogue.

Dancing from 9 p.m. to 1 a.m. to the music of Howard Paull, the entertainment group of Pennsylvania.

Delicious hors d'oeuvres — set-ups provided to mix with your spirits. A champagne toast at the stroke of midnight, followed by a lavish breakfast. All this for the price of fifty dollars (\$50) per couple.

Reservations are now being taken by:

Vicky Erdman - 478-7658

Florence Seidel - 764-7951

Dianne Seidel - 479-0490

The closing date for reservations is November 30, 1987.

Ecuminical Thanksgiving

All are invited to participate in an Interfaith Thanksgiving Service on Wednesday, November 25 from 12:15 to 1:00 p.m. at First and Central Presbyterian Church, Eleventh and Market Streets in Wilmington.

Praying together with us will be representatives of the Roman Catholic, Protestant, Jewish, Greek Orthodox,

Muslim Ummat and Baha'i congregations.

The service is sponsored by the Religious Communities of Wilmington and the Delaware Region, National Conference of Christians and Jews.

Flu and Pneumonia vaccinations are available from The Delaware Department of Public Health.

Rescuer Seeks Survivor

Wanda who was a child in a Polish family that hid a young Jewish woman in Krakow, Poland, between 1941-1945, is seeking the whereabouts of STEFA. This Jewish woman who was known under the pseudonym of "STEFA" was hidden in Krakow-Prokocim, UL. Pilsudskiego 46. WANDA who is currently residing in the States, last saw STEFA in January 1945 in Krakow, would very much like to get in touch with her. If you have any information, please get in touch with Ms. Leslie Schwartzman or Samuel P. Oliner at The Altruistic Personality Project, Dept. of Sociology, Humboldt State University, Arcata, California 95521. Phone 707-826-4553.

AEA Starts Registration

Albert Einstein Academy, Delaware's only Jewish Day School, has begun registration for the 1988-89 school year.

Albert Einstein Academy is dedicated to providing an excellent secular as well as Judaic-Hebrew curriculum from kindergarten through the elementary grades.

Staffed with state certified teachers, the school offers a wide variety of subjects. In addition to the general studies department, the Hebrew department teaches a love of Judaism through the study of Hebrew language, Bible, customs and tradition; art, music, and drama are integrated throughout.

The children attending the Academy come from a wide variety of backgrounds representing differing degrees of religious observance and involvement.

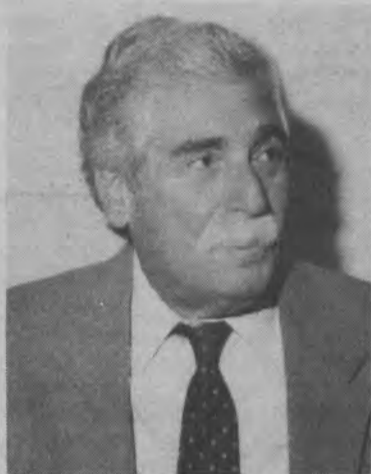
For more information contact Roselee Redelheim, Principal, at (302) 478-5026.

Mothers interested in information about breastfeeding are welcome to attend the next meeting of the New Castle County La Leche League. The group meets the second Thursday of each month. For further information call (302)658-4491.



Jewish Family Service of Delaware

Jewish Family Service is a constituent agency of the Jewish Federation of Delaware and a member agency of the United Way of Delaware.



Arnold Lieberman

Family Counseling

By ARNOLD LIEBERMAN
Executive Director

At the time this article is being written, about 20 different families are receiving ongoing counseling at our agency. These cases are apart from about 40 other active families in our Service to the Aged program, and an average of another 40 families who receive "Brief Services" within any given month. This totals our average of 100 different families, whom we serve in

our Counseling and Aged programs each month.

Our Family Counseling services are provided to individuals and families, who are hurting over their individual or family relationships. Of our current 20 active cases, 7 are couples dealing with marital problems, 7 are divorced people dealing with their current adjustments; and 6 are dealing with problems related to their own adjustments as parents or with their individual lives.

All counseling in our agency is provided by four Licensed Clinical Social Workers, who hold Master's Degrees and must complete a required number of hours of advanced training each year. These professionals can help clients understand their problems and look at possible solutions. They also maintain strict confidentiality regarding information shared with them.

The need for counseling is indicated when a person or family cannot deal with what

is going on in their lives. They may or may not understand just what is causing the problem and their reaction may range from depression to anger to sadness to frustration. There is no measure of (Continued to Page 18)

Bob Weiner
Jewish Folk Singer
With or Without Guitar

Israeli
Yiddish
Chassidic
American
Folk Music

762-1029
658-8700

CLEMENTE TRAVEL CENTER

*Atlantic City
*14 Day Casino Schedules
*Call anytime

328-4900
Free Parking-24 Hrs.
State Rd., DE

a refinishing touch

repairs of nicks, dents
& cigarette burns
specializing in moving
damages & ins. claims
sewing of torn or
split seams

furniture repairs
in home & office

(302)
762-3684

michael a. shur
604 hillcrest ave.
wilmington, de
19809

Dear Rachel

Can this marriage be saved? My husband embodies every Jewish mother's dream. He is Jewish, good looking, professional, etc. Here at home, my husband is an irritable, grouchy so and so, who hasn't got ten minutes to spend with his kids (ages 1½ and 4), let alone five minutes to spend with me. No matter how small a thing I ask of him (pick up some diapers on the way home from work; read the four-year old a story while I put the baby to bed) it is too much. Everything I ask for myself or the kids is an imposition. He works twelve-hour days more often than not (weekends, too), then claims he is too tired to do anything but vegetate. He refuses to cut back even when I beg him to. I'm beginning to wonder if there is any point to being married. What do you think, oh great and wise Rachel?

Grass Widow

Dear Grass Widow,

If you want to save this marriage (you do, don't you?) then you and your husband had better confront the fact that you have already grown quite distant from

each other. You and your husband are angrily confronting each other from the far corners of your marital lawn. You see the ugly brown patches but feel too depleted to produce the seed, water and fertilizer that will solve the problem. You look to the other person to do it for you, and then get even angrier when he or she "refuses" to help.

My suggestion is that you consult a qualified "lawn doctor," who will help you examine the causes of the brown spots, and develop suitable cures. "Lawn doctors" can be found at Jewish Family Service, or through professional referrals. By this time next year, you may be able to look forward to seeding, fertilizing and mowing a lush green marital lawn together.

Rachel

Send letters to "Rachel, c/o Jewish Family Service, 101 Garden of Eden Rd., Wilmington, DE 19803." Names and details will be altered in published letters to protect your privacy.

Jewish Family Service can help individuals and families in our community by providing:

*Counseling for: Marital Problems; Parent-Child Problems; Individual Problems; Total Family Problems

*Counseling to the Elderly

*Friendly Visiting to the Elderly

*Counseling Around Planning for the Families of the Elderly

*Information and Refer-

ring to the Needed Services Locally and Elsewhere

*Professional Programs to Groups of Various Sizes Around Topics of Common Interest or Problems

*Visitation to Jewish Patients in Institutions

*Help for Needy Jewish Families and Individuals at Holiday Times

*Limited Financial Assistance to Agency Clients

Call us at 478-9411 for further information.

— Support Our ADVERTISERS —

BOBEH MYSEH*

Most people have heard that you have to wait years to get into the Kutz Home. In fact, there's little or no wait for admission.

So before you believe another Bobeh Myseh, call us and we'll be glad to tell you more about ourselves.

*Old wives' tale.



THE MILTON & HATTIE KUTZ HOME, INC.

704 River Road • Wilmington, Delaware • (302) 764-7000

Wilmington's Best
Reader & Advisor
ROSE

Will read your entire life without asking any questions. Gives advice on all affairs of life.

- Tarot Cards
- ESP Palm Readings
- Spiritualist

1001 Kirkwood Hwy.
Between Wilmington & Newark

368-0311

Schoenberg Memorial Chapels



In the hallowed tradition of
our faith....

a dignified setting with
reverence for customs
and observances in strict
accord with family wishes.

519 Philadelphia Pike
762-0334

Call Us...

for Medical Equipment, the
Customer Oriented, Full-line Supplier,
bound to Quality and Service...
The Exceptionally Dependable,
single source for DME...



HOME HEALTH
EVERYTHING FOR YOUR
16-A TROLLEY SQUARE

**HAPPY
HARRY**

CARE SERVICE
FAMILY'S GOOD HEALTH
WILMINGTON, DE 19806

(302) 654-3019

MEDICAL EQUIPMENT

FREE SET-UP & DELIVERY FREE CONSULTATIONS 24-HOUR EMERGENCY SERVICE

COMPLETE
INSURANCE COVERAGE!
UNDERWRITING FACILITIES FOR
FIRE - CASUALTY - AUTO - MARINE
SURETY BONDS - SPECIALISTS FOR
UNUSUAL RISKS



HARRY DAVID ZUTZ, INSURANCE
300 DELAWARE AVENUE
P.O. BOX 2287
WILMINGTON, DE 19899
658-8000

COMPREHENSIVE COVERAGE
FOR ATTORNEYS, PHYSICIANS,
DENTISTS, ARCHITECTS,
ENGINEERS, REALTORS, NURSES,
PHARMACISTS, AND OTHER
PROFESSIONAL DISCIPLINES

**Professional Liability
Insurance, Inc.**



Obituaries

Joseph Abramov

Joseph Abramov, 77, of 516 W. 39th St., died Thursday, Oct. 29 in Wilmington Hospital.

Mr. Abramov was a butcher for 37 years with Isaacs & Bank's Meat Market on Second Street until it went out of business in 1964. After that, he co-owned and operated a liquor store in the Hares Corner area. He retired in the late 1970s.

He was a member of Congregation Beth Shalom, the Montefiore Mutual Benefit Society in Wilmington, the Jewish Community Center and its Senior Center.

He is survived by his wife, Ann; two daughters, Elaine Cohen of Brandywood and Rhona Hausken of Pierson Farms; and four grandchildren.

Seymour Ackerman

Seymour Ackerman, 41, of Revelle St., Hampton Green II, died Sunday, Nov. 1 at home.

Mr. Ackerman owned Devon Auto Sales, Bear. He was born in the Soviet Union and lived in New Castle for 20 years.

He is survived by a brother, Abraham and a sister, Lea Shapiro of Vineland, N.J.

Reba S. Brown

Reba S. Brown, 68, of Electra Arms Apartments, 18th and Broom streets, died Thursday, Oct. 22 at home.

Mrs. Brown was a member of Congregation Beth Emeth and Deborah.

Her husband, Irving N., died in 1961. She is survived by a son, Melvin A. of Richardson Park; a daughter, Arlene Pepi Eskin of Arundel; and a sister, Fay Rubin of Fort Lauderdale, Fla.

In memoriam the family suggests contributions to the American Heart Association, Wilmington.

Frances C. Glick

Frances C. Glick, 78, of 911 W. 24th St., died Friday, Oct. 30 of heart failure in St. Francis Hospital.

Mrs. Glick was a homemaker and a member of Congregation Beth Shalom.

Her husband, Albert A., died in 1972. She is survived by two sons, Dr. Joseph A. Glick of Pembrey and Martin R. of Rockford Village; a daughter, Shirley G. Feder of Albuquerque, N.M.; a brother, Abe Cotler of Elmer, N.J.; two sisters, Lillian Blum and Dorothy Roman-sky, both of Wilmington; and eight grandchildren.

Sylvia Green

Sylvia Green, 75, of 3120 Naamans Road, Stratford Apartments; died Tuesday, Nov. 3 in St. Francis Hospital.

Mrs. Green was a homemaker.

She is survived by her husband, Philip; two sons, Dr. Jerald R. of Deer Park, N.Y., and Ronald of Freehold, N.J.; two brothers, Irvin Greenberg of Rome, N.Y., and Milton Greenberg of Atlantic City, N.J.; and five grandchildren.

Leonard Levin

Leonard Levin, 75, passed away Oct. 26 in Somerset West, South Africa. Mr. Levin was the father of Ruth Ann Gur, of Wilmington.

Mr. Levin immigrated to South Africa 50 years ago from Vilna. He founded the Central Stores in Somerset West, South Africa.

A life long Zionist, Mr. Levin is survived by two

sisters and a brother in Israel. His wife, Rose, of Somerset-West and sons Johnathan of Johannesburg and Victor of Cape Town South Africa and a daughter, Ruth Ann Gur of Wilmington.

Sophie Hellman

Sophie Hellman, 77, formerly of the Electra Arms Apartments, 18th and Broom streets, died Friday, Nov. 6 of a heart attack in The Kutz Home, 704 River Road, her residence since January.

Miss Hellman was a retired clerk from Goodwill Industries of Delaware.

She was born in Russia and she immigrated to the United States when she was about 12 years old.

She is survived by a sister, Bertha Sachs of Elsmere.

Dian Pevar

Dian Pevar, 64, of 602 Ridge Ave., Kennett Square, Pa. died Thursday, Oct. 22 at home.

Mrs. Pevar was a secretary for about 30 years for her husband's construction company, Leonard Pevar Co.

She is survived by her husband, Leonard; a son, Marc David of Kennett Square; a daughter, Jan Susan Pevar of Needham, Mass.; her father, Samuel Wasserman of Philadelphia; a brother, Irving Wasserman of Venice, Fla.; a sister, Edith Gindin of Philadelphia; and five grandchildren.

JFS —

(Continued from Page 17)

severity regarding the need for counseling. Anything that is upsetting and cannot be dealt with adequately, deserves to be worked on with help. The counselors consider as serious any problem brought to them, and consider seeking help a sign of strength.

Counselors do not make judgements based on their own feelings, and they do not tell clients what to do, or give them pat answers. Rather, they help clients to work through their problems in a manner that is appropriate for the client.

The length of time required for counseling varies with each client and situation. At the completion of the intake process, during which time information is obtained and the problem is identified, the counselor may set up with the client's agreement, a set number of sessions. At the end of these sessions, the situation will be reviewed again, and further plans agreed upon.

Fees are charged for all counseling sessions and are

based on a sliding scale, considering income, size of family, and any unusual circumstances. Some counseling may be reimbursable through health insurance.

For those clients unable to make appointments during day-time hours, our office is open Wednesday evening for pre-scheduled counseling sessions.

Competent, professional, confidential counseling is available at Jewish Family Service. Simply call 478-9411 to take advantage of it.

Jewish Singles

A unique opportunity awaits young, Jewish singles between the ages of 21 and 31. Over 280 people have already experienced activities ranging from Happy Hours to Bagel Brunches, picnics to sporting events. Events are scheduled every 4 to 6 weeks. The Jewish Singles group is an excellent opportunity to meet people, network and make friends. If you would like to either participate in or plan activities, contact the Jewish Federation of Delaware, 478-6300.

For Nursing Care in Your Home

RELY ON US!



**Medical
Personnel
Pool**

MEDICAL PERSONNEL POOL®
MPP™ provides experienced
home health care professionals
— from live-in companions to
Registered Nurses.

Call us 7 days a week, 24 hours
a day, for home health care you
can rely on.

995-6696

2055 Limestone Rd.
Suite 213
Wilmington, DE 19808

Arabs Propose Definition Of Terrorism

By YITZHAK RABI

UNITED NATIONS, (JTA) — An Arab proposal to convene an international conference that would define terrorism, and differentiate it from struggles for national liberation, was denounced by Israel Wednesday as a ploy intended to "legitimize" terrorism "past and future."

The "Godfathers are seeking to define organized crime," Israel's ambassador to the United Nations, Binyamin Netanyahu, said of the proposal presented to the General Assembly by Libya and Syria Tuesday night. "No doubt these two regimes know the topic well. In fact, no two other regimes are more experienced practitioners of this craft,"

Netanyahu said.

The proposal, which technically was offered by Libya on behalf of Syria, was submitted to the General Assembly's legal committee for discussion, after which it may be returned to the General Assembly in the form of a draft resolution to be voted on.

The idea of a conference to redefine terrorism has been brewing at the United Nations for some time. Israeli diplomats told the Jewish Telegraphic Agency Wednesday that Israel and the United States have been campaigning vigorously in recent weeks against Arab plans to convene such a conference. According to observers here, the Arabs are searching for legal grounds to continue

their violent struggle against Israel, Israeli citizens and institutions.

"But terrorism has nothing to do with the real or stated aims of its perpetrators. Terrorism is defined by what the terrorists do, not by what they say they do it for," the Israeli envoy stated.

"With these proposals, Libya and Syria want to confuse our understanding of terrorism and thereby legitimize their crimes, past and future. They want to do so by deliberately mixing ends and means. But ends and means do not mix — and must not be mixed. This is the whole basis of morality. Terrorism is a means, a criminal means. Nothing justifies it and nothing will," Netanyahu said.

Report Finds Shin-Bet Used Coercion

TEL AVIV, (JTA) — The Shin Bet, Israel's internal security agency has, since 1971, used psychological and "physical pressures" to obtain confessions from suspected terrorists and resorted to perjury to ensure convictions, according to the report of an investigating committee, made public, in part, recently.

The report is expected to trigger a flood of appeals to Israel's Supreme Court for new trials for terrorists and others convicted on the basis of confessions.

The report, nevertheless, recommends no criminal action against Shin Bet operatives who employed

extra-legal methods and, in fact, sanctions such methods in some cases. The extent to which they may be permitted is specified in a section of the report submitted to Premier Yitzhak Shamir that remains secret.

The report was prepared by a government-appointed judicial commission headed by former Supreme Court President Moshe Landau, assisted by a former head of Mossad, the external secret service, whose identity is classified, State Comptroller Yaacov Maltz and Gen. Yitzhak Hofi, former commander of the northern sector. The commission was set up as a result of two incidents

that created turmoil in Israel and headlines around the world. One was the April 1984 killing of two Arab bus hijackers in the Gaza Strip after they were handed over to Shin Bet agents by the Israel Defense Force, which captured them alive.

The second was the case of former IDF Lt. Izat Nafsu, whom the Supreme Court earlier this year ordered released from prison after serving seven years of a life sentence for alleged spying and contact with terrorists. The high court found that Nafsu, a Circassian Moslem, was convicted on the basis of evidence fabricated by the Shin Bet.

KVETCH!™



BOXERMAN & SAUNDERS

© 1987 David S. Boxerman and Mark Saunders. All rights reserved.

"Swell, the only shade for 200 miles and it catches fire!"

Stoltz
Realty Co.
REALTORS

MULTIPLE LISTING SERVICE

Commercial,
Industrial,
Residential
Leasing

JOSEPH H. BYER

Realtor Associate

27 Years with Stoltz Realty Co.

Call for Market Analysis

No obligation

1600 PENNSYLVANIA AVE.
WILMINGTON, DE 19806

BUS. (302) 658-6681
HOME (302) 478-6571



WHY FRET?
Next Time
Call Us
Top Quality
Service &
Product

RUD Distributors Ltd., Inc.

Wholesale Distributors
Tobacco-Candy-Maps-Books



Wilmington
(302) 428-1783 • (302) 428-1-R-U-D

**Don't Let Just Anyone
Monkey with Your Sign**

CALL A TUPP PROFESSIONAL



Half the brothers-in-law and some of the handymen in the Delaware Valley claim they can fix or maintain your sign. Don't you believe it. Every year for the past 58 years, we've had to fix the handy work of some jack-of-all-trades. It always ends up costing the owner more time and money than if he would have called us first.

**TUPP
SIGNS**

Call 322-1600

457 E. New Churchman's Rd.
New Castle, DE 19720

alfred carlis

Fine Children's Wear
DOWNTOWN WILMINGTON

111 W. 9th St. 656-7069

YOU NAME IT WE LEASE IT.

At Delaware Auto Leasing we provide: No down payment. 12 to 66-month lease plans. No extra charge for purchase option. Extended service contracts. Cash or trade for your present car or truck. Executive leasing plans available with personalized service, including pick-up and delivery. Loaner cars available. Small fleet management available. For one car or a fleet, call (302) 656-3154.

'88 VOLKSWAGEN FOX, 2 DR \$109*	'88 TOYOTA TERCEL HB \$128* <small>48 mo.</small>	'88 CHEVROLET CORSICA \$159*	'88 CHEVROLET FULL-SIZE P/U \$176*
'88 HONDA ACCORD SEDAN \$178*	'88 FORD AERO STAR VAN \$178*	'88 JEEP CHEROKEE 4x4 \$219*	'88 CHEVROLET CAMARO IROC-Z \$228*
'88 VOLVO DL SEDAN \$236*	'87 NISSAN 300ZX \$288*	'88 STERLING 825S \$319*	'88 CADILLAC DE VILLE \$309*
'88 SAAB 900 TURBO \$337*	'88 MERCEDES BENZ 190E \$394*	'88 CADILLAC ELDORADO \$399*	'87 CADILLAC ALLANTE \$599*

*60 MOS. CLOSED END LEASE. *1000 down, cash or trade. 1st payment, refundable security deposit due on delivery. Taxes, tags, extra. Multiply 60 mos. times payment for total amount.

Delaware Auto Leasing
1605 Pennsylvania Ave., Wilmington
Phone (302) 656-3154

Peres: Concerned For Soviet Jews

By DAVID LANDAU
JERUSALEM, (JTA) — Foreign Minister Shimon Peres says he is "deeply worried" about the ongoing shrinkage of Soviet Jewry through assimilation, intermarriage and actually opting out of Jewish identity.

"This is the reason why I strive so hard to foster relations with the Soviet Union:

so that we can maintain ties with the Jews who live there," he explained.

He said that peace between Israel and its neighbors could be the Archimedean point from which the Jewish State could shape the course of the Jewish people. Hence, his unceasing quest for diplomatic progress towards peace.

"If there were peace, more Jews would come to live in Israel. Jews would feel closer to Israel. After all, the extent of Israel's attractiveness to world Jewry is the crucial question," he said.

Statistical and Real Jews

Returning repeatedly to his concern for the future of the estimated 2.5 million Jews in the USSR, Peres said: "There is a big difference between statistical Jews and real Jews... The trend towards disappearance there in the Soviet Union seems to me very serious indeed. The drop-out phenomenon of Soviet Jews who emigrate to Israel but choose other destinations is the other side of the coin..."

Peres denied that he was accepting the late Nahum Goldmann's persistent belief that Israel and world Jewry focus on Soviet Jewry's domestic condition in addition to their right to leave. "The main thrust of our effort has to be towards aliya (immigration to Israel)," Peres said. "I am not in favor of encouraging Jewish life in the diaspora. In the final analysis, I am convinced that the existence of the Jewish people depends, now more than ever, upon the existence of the State of Israel. That goes for both physical existence and spiritual existence..."

Regarding the two conditions he laid down earlier this year for Soviet participation in Mideast peacemaking, Peres said "There certainly is progress' on the matter of Soviet Jewry. "We can't say there isn't."

"They have released all the Prisoners of Zion — and not incarcerated others in their place. They have increased the number of exit permits: The rate has gone up from a hundred per month to nearly a thousand. They allow a greater degree of freedom for religious worship.



YUGA, the Stranger in the Egyptian Valley of the Kings

Do You Know This Man?

Chances are against you. His name was "Yuga" in ancient Egyptian. And Egyptologist, Ahmed Osman, in a new book, *Stranger in the Valley of the Kings*, believes he may be Joseph: Our ancestor who led his household into Egypt.

If Yuga was Joseph, the question remains of course, whose remains did Moses have our ancestors carry around for 40 years?



Quick Class

The fastest way to Go For The Green in the Jewish Voice Classified.

Name _____

Address _____

City _____ State _____ Zip _____

Phone () _____

Advertisement: 36 characters per line (spaces included) at \$1.00 per line - two line minimum

Mail to:

**Quick Class
Jewish Voice**

**101 Garden of Eden Road
Wilmington, DE 19803**



Classifieds

Classified ads are available at \$1.00 per line (at least two lines, please). Send your ad, with check, to Classified Ads, The Jewish Voice, 101 Garden of Eden Rd., Wilmington, DE. 19803. (302) 478-6200

EMPLOYMENT OPPORTUNITIES

HEBREW TEACHERS WANTED-Wanted for everyday. Call 215-696-7210 or 692-9957. Ask for Rabbi Portal.

HELP WANTED

TREASURER, Sisterhood Cong. Beth Emeth 300 W. Lea Blvd., Wilm, DE 19802

HELP WANTED

CHILD CARE - Occasional babysitting in my Landenberg, PA home. 215-274-2114.

SERVICES OFFERED

A-1 LANDSCAPING UNLIMITED - Now scheduling Fall Cleanups & Winter Preps. Call 652-0555.

DOMESTIX- Quality cleaning, weekly, bi-weekly, open house, special occasions. Insured & bonded. Party service. 792-2640.

DRAPERIES DRAPERIES! Get that same professional look at HALF THE PRICE of competitors. You supply the estimate and materials and we'll supply the labor. Residential and commercial contracts. Call for your appointment 658-4853.

PARTIES - WEDDINGS - TAVERNS. BAR & BAT MITZVAH. All Occasion DJ - Old And New Sounds. Call: Harry Crowley (302) 655-0955.

STUDENT TOUR AND CAMP CONSULTANTS. No fee charged. Let our 15 yr. investigating programs, placing students, getting feedback help you select from over 500 programs; all sports, college and European and US programs. Dorothy Graff, Diane Petrosky, 215-642-5882.

WANTED

Donation of adult bicycle, good condition, for new Russian Family. Tax deduction available. Call 478-9411, Jewish Family Service.

OLD LIFE MAGAZINES WANTED-1970 issues or older, Will pay - call 475-3097.

PORTA-CRIBS/PLAYPENS/HIGHCHAIRS. For Health & Fitness Drop-in Babysitting Service at the JCC. Please contact Susan Dowdell or Arlene Bowman at 478-5660.

New Middle East Peace Proposals Apparently Have Jordanian Support

By GIL SEDAN AND HUGH ORGEL

JERUSALEM, (JTA) — Wide difference over procedure continue to bedevil the Middle East peace process.

There are contradictory accounts of what, if any, new ideas U.S. Secretary of State George Shultz conveyed to King Hussein of Jordan when they met in London immediately following Shultz's three-day visit to Israel.

An international peace conference appears to be in limbo for the time being, owing largely to the unbending opposition of Premier Yitzhak Shamir. Instead, the Israeli media reported a proposal was made to Hussein for bilateral negotiations between Israel and Jordan to be sponsored jointly by the two superpowers — the United States and the Soviet Union.

Al Hamishmar reported that Hussein did not completely reject the idea, and agreed to have Shultz discuss it with Soviet Foreign Minister Eduard Shevardnadze.

But, according to the report, Hussein will insist that the two superpowers have equal weight and that their sponsorship serve as the framework for bilateral Israeli-Jordanian talks, not simply a formality.

Political observers here pointed out that even if Hussein were prepared to settle for a U.S. Soviet "umbrella" as a substitute for an international conference, there is a large gap between his and Shamir's views on the role of the superpowers and the role of the Soviet Union relative to that of the United States.

Maariv quoted political sources in Cairo as saying that the Jordanian ruler insists on convening an international conference in a form acceptable to the Arabs and the Soviet Union.

Hussein Meets With Soviet

Following his talk with Shultz in London, Hussein reportedly met with a

highranking Soviet official, apparently the deputy foreign minister, Yuri Vorontsov, and assured him that Jordan supports Moscow's position on everything connected with the peace process in the Middle East.

The king is also reported to have told the Soviet official that the gap has widened between himself and the American administration on the Middle East.

The Jerusalem Post reported that Hussein told Shultz that he (Hussein) would react to new proposals only after the Arab summit meeting in Amman Nov. 8.

Apparently, Israel and Jordan have come to an agreement on eight points through Secretary of State Schultz' efforts. Those eight points are:

- The goal is peace through direct negotiations.

- The way to direct negotiation is through an international peace conference.

- The conference will not impose any form of settlement on the principal parties (Israel and Jordan).

- All parties to the conference must accept UN Security Council resolutions 242 and 338 and renounce terrorism.

- Negotiations are to resolve the Palestinian problem in all its aspects through negotiation.

- Negotiation will be conducted independently by three bilateral geographic committees: A Palestinian-Jordanian delegation and an Israeli delegation, Syrian and Lebanese and Israeli delegations. All delegations and an Egyptian delegation will participate in a fourth multilateral committee. The regional delegations will help resolve past conflicts while the fourth overall committee will deal with future settlements.

- The international peace conference will be sponsored by the five permanent members of the UN Security Council.

Record Enrollment At Gratz

The Delaware branch of Gratz College Hebrew High School is proud to announce a record of 69 students for the current school year.

All of the students are learning about Jewish life, Jewish thought and Jewish experience with challenging courses and exciting instructors. They study Hebrew language and literature with special emphasis on conversational Hebrew.

The Gratz student body participates in educational forums and social gatherings with other Jewish teenagers from Delaware and nearby Pennsylvania. Student families belong to the whole spectrum of Delaware congregations.

Graduates earn high school credits and teaching certificates. They also qualify for advanced placement courses on the college level.



Henry Topel, prominent in local business and politics, kicked off the 1988 Federation campaign, November 8. The event at the Delaware Art Museum, which successfully began the official fund raising season for the Jewish Federation of Delaware, was attended by over 100 community leaders.

NEW CASTLE FARMER'S MARKET
Finest and Freshest Meats and Produce
Delicious Baked Goods
SOMETHING FOR EVERYONE

Rt. 13 across from Wilmington Airport
Open Friday & Saturday 10-10; Sunday 10-6

MAXI-SAVER ISRAEL

11 Days

Jan. 21-31 • Feb. 18-28

Includes Round Trip Airfare via TWA, 9 Nights! First Class Hotel Accommodations, Israeli Breakfast Daily, 2 Dinners, 6 Days of Sightseeing, All Taxes & Service Charges at Hotels, Israel Folklore Evening & More.

*excludes Tax & Security Charge Airfare alone from \$569 round trip

\$999*
p.p.d.o.

JAY PRESS

INTERNATIONAL TRAVEL EXCHANGE
2410 RHAWN ST., PHILA.
(Just West of Roosevelt Blvd.) (215)

322-2444

- New Hi Tech Wheel Alignment and Balancing
- New Technology for Brakes & Shocks
- New Giant Inventory



You Know Us As A Leading Wholesaler
NOW WE'RE OPEN TO THE PUBLIC WITH DISCOUNT TIRES AND FULL SERVICE

- * All Season
- * High Performance
- * Import Sizes
- * Van & Truck

Call **KEIL'S FIRST 762-6610**
214 Lea Blvd. • 500 Ft. Off Market St.
Mon.-Fri. 8-5:30, Sat. 8-4

Which comes first, buying or selling?

People on the move have always faced two tough questions: How can you buy a new home before you've sold your old one? And how can you sell your old home before you've bought a new one?

The answer is to have a good Realtor to help you. And that's where Patterson-Schwartz comes in. Because we can—better than anyone else—make things happen at the right time. So you don't end up owning two homes—or no home at all.



First of all, we have more exclusive listings than any other Realtor in the area. Plus we have instant access to every home that's multi-listed (and we're members of five multi-list services). We have 260 full-time sales associates who are in constant contact with each other on what sellers want to sell, and what buyers want to buy. And finally, our computers keep us up to the minute on new listings so we can instantly let buyers know when their dream house comes on the market.

All this expertise is not an accident. It's the result of training, experience and old-fashioned know-how combined with today's up-to-date tools of the trade. The result is thousands of satisfied buyers and sellers every year—people who make Patterson-Schwartz the #1 Best Seller.

If you feel a little overwhelmed by today's real-estate situation, don't despair. Call Patterson-Schwartz. Whether you want to buy, or sell, or both at the same time.



Patterson Schwartz
Realtors. #1 Best Seller
See The Light



101 GARDEN OF EDEN ROAD • WILMINGTON, DE 19803 • (302) 478-5660

Jewish Marriage Seminar "In And Out Of Bed"

Thursday, November 19, 1987
8 p.m.

Your marriage is going to be one of the 50% that lasts — you hope. But to master the obstacle course, it helps to have practical pointers from an expert.

Deborah Shain, MSS, ACSW, Marriage & Sex Therapist, will give you insights and information on how to chart your own path to success.

- See your own marriage in a historical perspective.
- Learn to predict and prepare for upcoming crises in your marriage.
- Learn Jewish and psychological techniques that work.
- Refreshments will be provided.
- Babysitting available by reservations only.

This program is being co-sponsored by Jewish Family Service and the Jewish Community Center's Early Childhood Department. To register for the babysitting service, please contact Jackie Deitch at the JCC.

**PUT 5748 YEARS OF SUCCESS
TO WORK FOR YOU!**

'A Touch Of Broadway'

A hard working committee under the guidance of Judy Mellen, Chairperson, has been busy putting all the final arrangements into place for the benefit concert. "A Touch of Broadway," to be presented at the Playhouse on Sunday, November 22, will feature a variety of entertainers from the state, television and film.

Hosts for the dinners, to be held prior to the show are: Linda & Stephen Cook, Harriet & Edward Engel, Ruth Ann & Errol Ger, Lolly & Kevin Gross, Debbie & Jerome Grossman, Doris & Albert Heisler, Reiko & Barry Kane, Deane & Howard Kattler, Ellen & Garth Koniver, Denyse & Efrem Lieber, Marilyn & Richard Levin, Judy & Allan Levy, Sandra & Martin Lubaroff, Judy & David Mellen, Doris & Irving Morris, Renee & Stephen Spiller and Lean & Joel Tenenbaum.



"A Touch of Broadway" Committee

Seated left to right: Nan Lipstein, Renee Spiller, Judy Mellen, Ellen Koviver, Deane Kattler with grandson, Matthew. Standing: Judy Levy, President and Toby Weiner, Staff. Committee members not shown: Sonia Bernhardt, Diane Gross, Danyse Lieber and Doris Morris.

Babysitting While You Exercise

The Health and Fitness Department is now offering a Babysitting Service on Tuesdays and Thursdays from 8:30 a.m. until 11:30 a.m. and from 5:30 p.m. until 8:30 p.m. The cost for this service is \$1 per hour for members and \$2 per hour for non-members. Registration is required and may be made by calling the Health and Fitness Department.

Children's Jewish Book Fair

December 1, 1987 - December 13, 1987
10 a.m.-5 p.m.

Instill your love of books and Judaism in your children. Encourage them to participate in our "Enjoy-A-Book Club" program. The books available for purchase from the "Enjoy-A-Book Club" will be on display in the lobby of the JCC from Tuesday, December 1 through Chanukah Choopla, Sunday, December 13. Chanukah gelt, wrapping paper and candles will also be available for purchase during the Book Fair. Our community's children will receive a free catalogue from which to select from over 140 different books published for Jewish children. Parents with their children can browse through the catalogue to select books for Chanukah gifts. The Children's Jewish Book Fair is being sponsored by the following religious schools: Adas Kodesh, Beth Emeth, Temple Beth El, Beth Shalom, Albert Einstein Academy and the JCC's Early Childhood & Children's Departments. For additional information regarding the "Enjoy-A-Book Club," contact your child's religious school principal or Arlene Bowman at the JCC.

Books shall be thy companions; book cases and shelves, thy pleasure — nooks and gardens.

Judah Ibn Tibbon

Chanukah Choopla Is Coming Soon! Holiday Craft/Gift Fair

Sunday, December 13, 1987
1-5 p.m.

The community is invited to the winter event of the season, which will include a children's carnival, gift bazaar, a variety of demonstrations, food, fun and plenty of entertainment for the entire family! Tables are available for rent, please contact the JCC.

The Breakfast Club (A New Group For Young Retirees) Cultural Art Series

The Breakfast Club will meet at 8 a.m. on the following dates at Styer's Restaurant in the Holiday Inn. The program includes breakfast, a featured guest speaker followed by a question and answer session.

"The Entertainment Of Business"

by Dave Fleming

Tuesday, December 8, 1987

"The Art Of Theatre"

by Cleavland Morris

Monday, January 11, 1988

For additional information on the JCC Breakfast Club, please contact Gal Shifron at the JCC.

Thursday Night Racquetball Special

This racquetball special is open to members of the JCC as well as non-member guests. This special will run for six weeks. A tournament is scheduled to follow this class.

Day: Thursday

Time: 5 p.m.-10 p.m.

Court Fees: \$1 per member/\$2 non-member guest

For more information on this special, please contact the Health and Fitness Department.

Join The Youth Council

The JCC will be initiating Youth Councils for 7th and 8th graders and one 9th through 12th grades. Councils will:

- Coordinate community wide Jewish teen programs.
- Establish a Board with representatives from youth groups and unaffiliated teens.

- Develop a central calendar of events and a forum for ideas and suggestions.

All interested teens are welcome!

If you are interested in joining us, please contact Shelley Gitomer, JCC Teen Program Coordinator.



ShopRite Grade 'A'

All Natural

TURKEYS

PRICE BREAK

With Coupon Below And Single \$50.00 Purchase

Frozen 10-13 lb. or 18-22 lb. Average

19 lb.

ShopRite Coupon

WITH THIS COUPON ONE (1) FROZEN (ANY SIZE) ShopRite Grade 'A' All Natural Turkey

FOR STORE USE ONLY
W/ Coupon Value Employee Initials

FOR ONLY .19 lb.

With Coupon and a single \$50.00 or More purchase (coupon must be presented at time of purchase)

OR 20¢ PER LB. OFF ANY BUTTERBALL, KOSHER, FRESH OR FROZEN TURKEY

Coupon good at any ShopRite Market. Limit one per customer. Offer good on \$50.00 or more purchase excluding cost of turkey, coupons, milk, cigarettes or Pharmacy. Video or other purchases prohibited by law. No rainchecks will be issued for specific weights if product within that weight range is available. Effective Sun., Nov. 8 thru Sat., Nov. 28, 1987.

FROZEN Empire Kosher Turkey

.89 lb.

Price Without Coupon *only* 39 lb.

ShopRite Of First State Plaza 1600 Newport Pike Open 7-11 Seven Days A Week



Double Coupons

Check Store For Details

ShopRite Does It RIGHT!

In order to assure a sufficient supply of sales items for all our customers, we must reserve the right to limit the purchase to units of 4 of any sales items, except where otherwise noted. Not responsible for typographical errors. Prices effective Wed., Nov. 11 thru Sat., Nov. 14, 1987. None sold to other retailers or wholesalers. Artwork does not necessarily represent item on sale, it is for display purposes only. Sunday sales subject to local blue laws. Copyright WAKEFERN FOOD CORPORATION 1987.



OLDSMOBILE QUALITY.
FEEL IT.



THE MARTIN COMMITMENT.
EXPERIENCE IT.



MARTIN OLDSMOBILE
298 E. CLEVELAND AVENUE • NEWARK, DE 19711 • (302) 738-5200