

The JEWISH VOICE

"You heard it in
The Jewish Voice"

Guide To The Jewish Community of Delaware

LUBAVITCH OF DELAWARE * CONGREGATION BETH SHOLOM * B'NAI B'RITH HOUSE OF DELAWARE * B'NAI B'RITH LODGE #470 * BRANDYWINE COUNTRY CLUB * GRATZ HEBREW HIGH SCHOOL * ALPHA EPSILON PI FRATERNITY HOUSE * JEWISH COMMUNITY CENTER * JCC PRESCHOOL * FAMILY SERVICE * JEWISH FEDERATION OF DELAWARE * JEWISH HISTORICAL SOCIETY * BESTY * JEWISH WAR VETERANS * JEWISH VOICE * JEWISH COMMUNITY RELATIONS COMMITTEE * MILTON & HATTIE KUTZ HOME * KADIMA * KUTZ HOME AUXILIARY * LABOR ZIONIST ALLIANCE * MONTEFIORE MUTUAL BENEVOLENT SOCIETY * NATIONAL COUNCIL OF JEWISH WOMEN * ORT * TEMPLE BETH EL * JEWISH COMMUNITY OF DELAWARE ENDOWMENT FUND * JEWISH SCHOOLS * ADAS KODESCH SHEL EMETH CONGREGATION * THE JUDAIC WORKSHOP * KI TOV CLASSES * ALBERT EINSTEIN ACADEMY * CHABAD-LUBAVITCH OF DELAWARE * CONGREGATION BETH EMETH * CONGREGATION BETH SHOLOM * B'NAI B'RITH WOMEN OF DELAWARE * B'NAI B'RITH HOUSE OF DELAWARE * BRANDYWINE COUNTRY CLUB * GRATZ HEBREW HIGH SCHOOL * HADASSAH * HILLEL * ALPHA EPSILON PI FRATERNITY HOUSE * JEWISH COMMUNITY CENTER * JCC PRESCHOOL * CANTON * BBYO * JEWISH FAMILY SERVICE * JEWISH FEDERATION OF DELAWARE * JEWISH HISTORICAL SOCIETY * BESTY * JEWISH WAR VETERANS * JEWISH VOICE * JEWISH COMMUNITY RELATIONS COMMITTEE * MILTON & HATTIE KUTZ HOME * KADIMA * KUTZ HOME AUXILIARY * LABOR ZIONIST ALLIANCE * MONTEFIORE MUTUAL BENEVOLENT SOCIETY * NATIONAL COUNCIL OF JEWISH WOMEN * ORT * TEMPLE BETH EL * JEWISH COMMUNITY OF DELAWARE ENDOWMENT FUND * JEWISH SCHOOLS * ADAS KODESCH SHEL EMETH CONGREGATION * THE JUDAIC WORKSHOP * KI TOV CLASSES * ALBERT EINSTEIN ACADEMY * CHABAD-LUBAVITCH OF DELAWARE * CONGREGATION BETH EMETH * CONGREGATION BETH SHOLOM * CONGREGATION BETH SHOLOM * B'NAI B'RITH HOUSE * B'NAI B'RITH WOMEN OF DELAWARE * B'NAI B'RITH LODGE #470 * BRANDYWINE

TABLE OF CONTENTS

Congregations	11
History	3
Education	8
Endowment Fund	5
Holocaust Memorials in Delaware	19
JCRC	3
Jewish Community Center	7
Jewish Family Service	12
Jewish Federation of Delaware	5
Jewish Holidays	6
Jewish Voice	5
Local Chapters of National Organizations	17
Map: Locating Delaware's Jewish Organizations	10
Milton & Hattie Kutz Home	13
Youth Groups	8

HODAS & OKEN INVESTMENT MANAGEMENT

Managed portfolios of NYSE securities.
Small accounts welcome.
Ask us for our record!

Since 1979

655-5010

BARBA SHOE REPAIR

1709 MARSH ROAD 478-1003
(Next to Buggy Tavern - Across from The Graylyn Shopping Center facing the Bank of Delaware)
Mon.-Fri. 9:30 am-6 pm; Sat. 9 am-4 pm
"OUR PRICES CAN'T BE BEAT"

COUPON

Men's Heel & 1/2 Soles

Dress Shoes Only
\$19.99

Reg. \$22.99

Coupon good with incoming order only.

Good anytime! Unlimited Quantity.

Larger Sizes \$1.00 More EXP. 12/31/89

Women's
All-Size
Heels

High Heels Only
\$2.95

Boots, Loafers
& Flats

\$1 more

Coupon good with

incoming order only

Good anytime!

Unlimited Quantity

EXP. 12/31/89

Men's Full
Sole &
Heel

Dress Shoes Only
\$24.99

Reg. \$29.99

Leather or Rubber

Coupon good with

incoming order only

Good anytime!

Unlimited Quantity

Larger Sizes \$1.00 More

EXP. 12/31/89

In Before 11 a.m.
Same Day Service Out By 5



Is Your Sign Looking a Little Run Down?



Then you are lacking a very important image for success. Having a sign that is in ruin or misplaced could cost you a lot of business over the long term.

At Tupp Signs we have built and designed signs that helped businesses like yours to prosper. And we've done that for over 58 years.

TUPP SIGNS

Call 322-1600

457 E. New Churchman's Rd.
New Castle, DE 19720

Know someone heading for Delaware? Give them a head start.



If you know someone who's moving to Delaware, you can help make their move a lot easier. Just contact me, Alice Kelley, at Bank of Delaware's Newcomer's Service. I'll be happy to help them get acquainted with our state and send them a free copy of this "Welcome to Delaware" kit.

It's a very useful collection of facts and information about housing, schools, taxes, restaurants, shopping centers, banking services, and much more.

So just contact me at 302-429-1522, send the coupon below, or come into the office at 222 Delaware Avenue. I'll take care of the rest.

Please send your "Welcome to Delaware" kit to:

Name _____

Address _____

City _____ State _____ Zip _____

Phone _____

Date of Arrival _____

Mail to: Mrs. Alice Kelley/Newcomer Department
Bank of Delaware
222 Delaware Avenue, 15th Floor
Wilmington, DE 19801

BANK OF DELAWARE
Delaware's Bank

Member FDIC

JV

HISTORY

100 Years of Active Jewish Life in Delaware

Although there were Jews in Delaware from the seventeenth century days of Dutch settlement, Judaism did not flourish in very early Delaware, and by 1840, it appears to have been nonexistent. Not until 1879, when the Moses Montefiore Mutual Aid Society was organized, did Delaware have a permanent Jewish institution. Therefore, Delaware became the last of the original thirteen states to have an organized Jewish community and worship services for the High Holidays. In 1879, Wilmington had a Jewish population of some 25 families, most engaged in retail businesses. A small number of Jewish retailers lived in Dover, Smyrna and Milford.

Between 1880 and 1910, the Jewish population of Wilmington grew tremendously as East European immigrants found their way here. In just 30 years, the Jewish population of Wilmington expanded to more than 400 families.

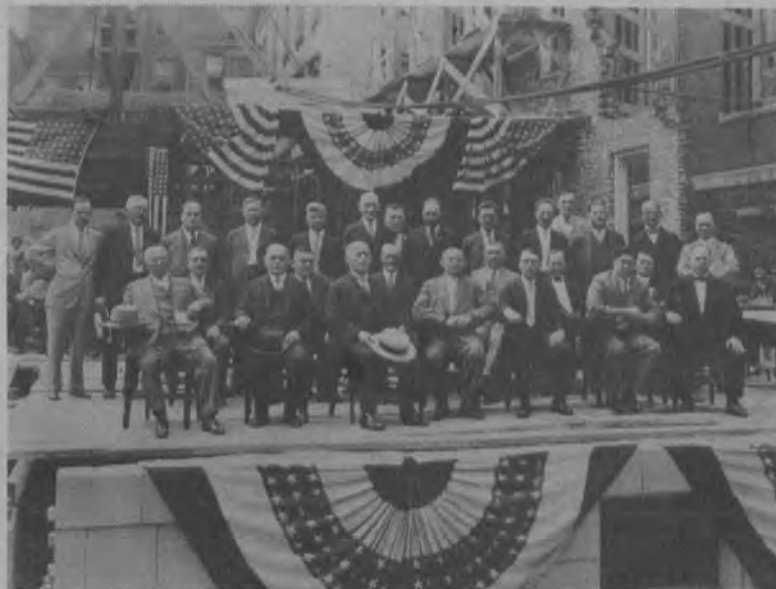
The influx of struggling immigrants, primarily merchants and peddlers, spurred the formation of many service organizations. Between 1899 and 1902, three of today's primary institutions were founded to offer assistance to the new arrivals. The Hebrew Charity Association, today's Jewish Family Service, was founded in 1899; The Young Men's Hebrew Association,

today's JCC, in 1901; and the Bichor Cholem, today's Kutz Home, in 1902.

The immigrants also established several synagogues to meet their differing religious expectations. Three of the early synagogues survived: Adas Kodesch, founded in 1885; Chesed Shel Emeth, founded in 1901, merged with Adas Kodesch in 1957; and Beth Emeth, founded in 1906.

Although Wilmington had the largest concentration of Jews in the state, Jews continued to live in Kent and Sussex Counties. By the early twentieth century, Dover, Lewes, Smyrna, Felton, Laurel, Georgetown, Millsboro, and Seaford had some Jewish retailers, peddlers, canners, distillers or hotelkeepers. The first Jewish farmers arrived in Viola in 1897 and 1900. With support from the Jewish Agriculture Society, 25 Jewish families settled on Delaware farms between 1912 and 1929. Jewish immigrants also entered farm-related businesses—livestock, poultry, and farm supplies.

No Jewish organization existed downstate until 1916, when the short-lived Jewish Farmers Association was established. Religious services were held informally, in individual homes, until 1939 when the Jewish Congregation of Lower



Community members attending a ceremony to lay the cornerstone of the Adas Kodesch synagogue in downtown Wilmington, in 1927.

Delaware, today's Congregation Beth Shalom, was incorporated.

During the first three decades of the twentieth century, the Jewish community of Wilmington grew rapidly, and by 1929, the population reached 3935.

But the community became increasingly fragmented. A fourth synagogue, Congregation Beth Shalom, was established in 1922. By 1929, there were more than 20 Jewish organizations, often work-

ing at cross purposes. Attempts to unite the community were unsuccessful until 1935 when the Jewish Federation was established as a representative body of Wilmington's Jewry. In the following decades, the Federation's role was expanded statewide.

A few Jews attended the University of Delaware before the turn of the century, but Jews do not appear to have settled in Newark until early in this century. The Newark Jewish

community, today's Temple Beth El, was formed in 1954.

Throughout this century, the majority of Jews continued to live in Wilmington. Between 1929 and 1945 the Wilmington Jewish community increased 60 percent, to 6,156 people. Only an estimated 80 Jewish families lived in Lower Delaware in 1945. By 1974, the Jewish population of Delaware was 9000 with 96 percent in Northern Delaware. In the last decade, there has not been a significant increase in the Jewish population, which is estimated at 9300 today.

In this brief introduction, it is not possible to name all the people who have distinguished themselves in the 100 years of active Jewish life in Delaware. Suffice it to say that Jews have held high positions and made significant contributions in numerous fields, including law, business, government, medicine, farming, and journalism.

The Jewish Historical Society of Delaware continues to collect and preserve information on Delaware Jews. The archives of the JHSD are available to all who wish to know more about the rich Jewish heritage in Delaware.

(This introduction is based on material at the Jewish Historical Society of Delaware and on as yet unpublished work by Charles Salkin and Toni Young.)

- INSTALLATION
- REPAIRS
- SERVICE
- REMODELING
(BATH & KITCHEN)



478-4265

PLUMBING • HEATING • AIR CONDITIONING

Serving All Of New Castle County's Plumbing, Heating and Cooling Needs For The Past 18 Years

PRE-SEASON HEATING SYSTEM CLEANING & CHECK UP

Gas Furnaces & Heat Pumps \$50.00 + parts
 Oil Furnaces \$100.00 + parts
 Gas Boilers \$80.00 + parts
 Oil Boilers \$120.00 + parts
We service all brands of furnaces and boilers.

24-HOUR ON-CALL EMERGENCY SERVICE

Residential • Commercial • Industrial

**200 A DELAWARE AVENUE
 WILMINGTON, DELAWARE 19803**

478-4265

A RING LEADER SPECIAL

SAVE 50% ON DIAMOND BRACELETS

	REG. PRICE	OUR PRICE
1 ct. T.W.	\$1300.00	\$649.00
3 ct. T.W.	\$3000.00	\$1498.00
4 ct. T.W.	\$3400.00	\$1698.00
7 ct. T.W.	\$6400.00	\$3198.00
8 ct. T.W.	\$7400.00	\$3698.00

SAVE 30%
 on
Mikimoto Pearl Necklaces, Earrings and Bracelets

SAVE 50% ON DIAMOND HEART NECKLACES

	REG. PRICE	OUR PRICE
1/2 ct. T.W.	\$600.00	\$298.00
1 ct. T.W.	\$1000.00	\$498.00
2 ct. T.W.	\$2000.00	\$998.00

HARRIS
Jewelers

SEE OUR LARGE SELECTION OF Chai and Star of David Pendants at 40% Savings

COME IN AND PICK UP OUR FREE HOLIDAY SALE BROCHURE AT SAVINGS FROM 40 TO 75%

Our 1 Million Dollar Antique and Estate Jewelry Sale is at our Branmar Store. Save up to 40% on One of the Area's Largest Collections.

HARRIS JEWELERS

309 Branmar Plaza
 1812 Marsh Road
 Wilmington, DE 19810
 Phone: 475-3101

4377 Kirkwood Hwy.
 Kirkwood Plaza
 Wilmington, DE 19808
 Phone: 999-9901

Market Street Mall
 824 Market Street
 Wilmington, DE 19801
 Phone: 655-6253

NEWCOMERS

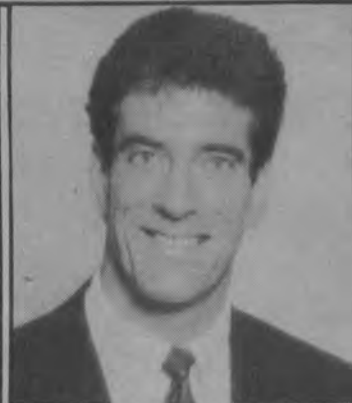
WOMEN'S DIVISION OF THE
JEWISH FEDERATION OF DELAWARE

WOULD LIKE TO WELCOME YOU
PERSONALLY TO THE COMMUNITY

IF YOU ARE NEW TO THE COMMUNITY,
OR KNOW OF A NEWCOMER,

PLEASE CALL LELAINE NEMSER
AT THE OFFICE OF
JEWISH FEDERATION OF DELAWARE:

478-6200



JON PAUL BAKER
SALES ASSOCIATE
Maryland & Delaware

**Weichert,
Realtors®**

MIDWAY OFFICE
4703 KIRKWOOD HIGHWAY
WILMINGTON, DE 19808

OFF: 302-992-9500
RES: 302-453-0385

susan isaacs

GALLERY

FINE ARTS
PICTURE • FRAMING

709
Tatnall St.
Wilmington
DE
19801
302 658-1948

BRANDYWINE FOOD SHOPPE

1707 Foulk Road at Silverside
Wilmington, DE 19803 • Phone (302) 478-3718

SERVING BRANDYWINE HUNDRED
OVER 25 YEARS

LET US PREPARE THE FOOD -- SO
YOU CAN HAVE THE FUN!

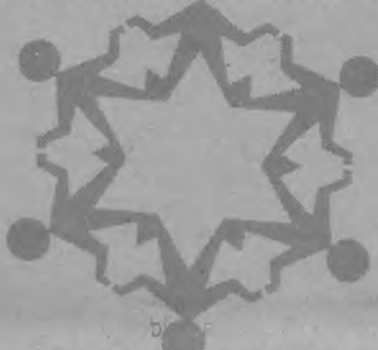
WE HAVE A FULL LINE
OF GROCERIES

- Homemade Salads • Tea Sandwiches
- Party Platters • Party Subs to 6 ft. long
- Vegetable Trays • Cheese Trays

CONGREGATION BETH EMETH IS...

"Beth Emeth has been a central part of my life for nearly half a century. What the Congregation has represented to me and my family is best expressed in the stone inscription on the front of the building: 'Do Justly, Love Mercy and Walk Humbly with Thy god'".

Chief Justice Daniel Herrmann (Ret.)



ONE FAMILY...

"Beth Emeth has nurtured and sustained our family for over three decades. It's a way of life...a second home."

Leon and Betty Chambers

GROWING TOGETHER...

"I experienced the religious inspiration and welcome of Beth Emeth as my parents' son. Now, as a father, I am so pleased to know that my 4-month old daughter will grow up in the same Congregation that helped shape my life."

Daniel Kreshtool



BUILDING TOGETHER...

"This Congregation is where I met my closest friend, and where through Beth Emeth Senior Temple Youth (BESTY), I can put my religious principles into practice and have fun at the same time."

Joy Dara Ellick

WON'T YOU MAKE BETH EMETH PART OF YOUR FAMILY?

Peter H. Grumbacher, Rabbi
Manfred Katz, President

Verna Schenker, Membership
Harry Wolpert, Membership

Congregation Beth Emeth
300 W. Lea Blvd.
Wilmington, DE 19802
(302) 764-2393

Little Learners, inc. Day Care Center

AGES 6 WEEKS - 5 YEARS

- Developmentally appropriate curriculum
- Meals & snacks provided
- Pediatric physician consultant readily available
- Parent Education Seminars • Open Door Policy
- On-going Staff development
- Large rooms with natural lighting • 5,000 Sq. ft. fenced play yard



HOURS 6:30 A.M. - 6:00 P.M.

SILVERSIDE CARR EXECUTIVE CENTER

501 Silverside Rd. - Suite 128
Wilmington, DE 19809

(302) 798-5570

GOOD BUSINESS
MAKES
A PLEASURE

TAKE-A-BREAK

- COFFEE SERVICE
- VENDING MACHINE SERVICE
- COFFEE CATERING
- BOTTLED WATER SERVICE
- FOOD MANAGEMENT SERVICE

FAST, LOCAL SERVICE. BRAND NAME PRODUCTS
ATTRACTIVE, FUNCTIONAL EQUIPMENT.
RADIO DISPATCHED REPAIR SERVICE.

MICROWAVE & REFRIGERATOR
LEASING

658-8571
413 8th AVE. - WILM., DE

FULL LINE VENDING

FREE SURVEY — PROFIT SHARING

THE JEWISH FEDERATION OF DELAWARE

101 Garden of Eden Road, Wilmington Delaware 19803
478-6200

President - William M. Topkis

Executive Vice President - Robert N. Kerbel

The Jewish Federation acts as the umbrella and coordinating organization of the Delaware Jewish community which consists of more than 30 local, national and overseas Jewish agencies and organizations. The Federation is the major budgeting, planning and fund raising body for the Jewish community, providing funds to local, national and global Jewish organizations. The Federation operates through a volunteer board of directors and more than 250 men and women serving on 20 different committees.

As the coordinator of community activities, the Federation sponsors the Jewish Community Relations Committee, The Jewish Voice, the Endowment Fund, Leadership Development, Women's Division, educational projects and the annual Campaign.

The Campaign

Through the annual Federation

campaign led by hundreds of volunteers, funds are raised to benefit health, welfare, educational, humanitarian, and cultural services provided in Delaware, the U.S., Israel, and the world over.

The local beneficiary agents of the Jewish Federation of Delaware Campaign include Albert Einstein Academy, Gratz Hebrew High School, Hillel at the University of Delaware, the Jewish Community Center, Jewish Family Service, the Milton and Hattie Kutz Nursing Home and the KiTov and Judaic Workshop programs for educationally handicapped Jewish children and young adults.

The Allocations Process

Through volunteer involvement, requests are presented by more than 40 social services agencies and organizations for an allocation from

the funds raised through the Jewish Federation of Delaware Campaign. Decisions are based on the financial need and the types of programs being offered. In addition to the JFD's six local beneficiary agencies, the Jewish Federation supports agencies such as United Jewish Appeal which provides vital services in Israel, and national organizations such as the Anti-Defamation League, which combats anti-semitism throughout the U.S. (See allocations breakdown on this page.)

How to Be A Federation Volunteer

Since the Federation relies upon the support of volunteers and contributors, there are many opportunities available for interested volunteers. A Young Leadership Program is open to all young adults of Delaware interested in participating in many different aspects of the organ-

ized Jewish Community of Delaware. This group offers events, meetings, trips, etc., designed with a Jewish accent, such as a lunch meeting with a local politician, or participation in a national conference with more than 2500 young adult delegates. Under the auspices of the Jewish Community Center, a similar program is offered to Young Jewish Single Adults.

The committees of the Federation are always in search of new volunteers. To find out which committees might appeal to you, please contact the Federation.

How To Be A Federation Contributor

During the annual telephone Campaign every Jewish adult is encouraged to fulfill the concept of *izedakah* by making an appropriate contribution.

Women's Division

The Women's Division of Federation, in addition to playing a major part in the annual Campaign, provides educational programs, coordinates the Jewish community calendar and welcomes all Jewish newcomers to Delaware.

JIFFY

A new service, JIFFY (Jewish Information Fast For You), an information and referral service, is now available through a direct service provided through the Jewish Federation. Information is available regarding most Jewish-related questions, problems and concerns such as where to find pre-school care programs or how to have kosher meat delivered. There is no charge and lines are available Monday through Friday, 9 a.m. to 4 p.m. In northern Delaware, call 478-6200; in the Dover area, call toll free, 678-0772.

THE JEWISH VOICE

478-6200

Editorial Committee Chairman-Toni Young

Editor-Paula Berengut

The Jewish Voice is the only Jewish newspaper in the State of Delaware. The Voice provides news and analysis of local, national and international issues, with special attention paid to the political, economic, religious and social life of the State of Israel. There are always two pages of opinions on a variety of topics.

Regular features of The Jewish Voice include a Jewish version of Dear Abby called "Dear Rachel" (a service of Jewish Family Service), a Dvar Torah column, book and movie reviews, a Jewish genealogy

column and a travel column. Local Jewish community announcements and events are listed in every issue.

Special holiday issues are published at Rosh Hashanah, Hanukkah and Passover. Advertising supplements include this Newcomers' Guide, a Bridal/Party Guide, Back To School and Women in Business, among others.

The Jewish Voice is published by the Jewish Federation of Delaware and is overseen by an Editorial Committee.

JCRC

478-6200

Director - Lelaine Nemser

Chairman - Robert Coonin

The purpose of the Jewish Community Relations Committee of the Jewish Federation is:

- 1) To interpret Israel's position and needs to the American public and government;
- 2) To marshal public opinion on behalf of justice and freedom for Soviet Jews and Jews in Arab lands;
- 3) To counteract anti-Jewish activities and significant manifestation of insensitivities to Jewish concerns;
- 4) To educate the Jewish community and the general community about the lessons of the Holocaust;
- 5) To help assure a climate which permits the Jewish populations to participate fully in the general life of the community and which fosters creative survival of Jewish values and religious heritage. This can

happen only when all groups are accorded equal opportunity, equal rights and equal justice, and through the promotion for the democratic system by working with community coalitions and organizations, both within and outside the Jewish community.

The Jewish Community Relations Committee operates through a steering committee of representatives of Jewish organizations and synagogues. Its work is accomplished through volunteer task forces and committees. There are currently five such task forces: Israel, Soviet Jewry, Interfaith, Domestic Concerns and the Halina Wind Preston Holocaust Education Committee. In addition, a branch of JCRC exists in

Lower Delaware.

Our Jewish Community Relations Committee is active in the National Jewish Community Relations Advisory Council (NJCRAC) which consists of 11 national and 114 community Jewish organizations. NJCRAC focuses on issues of concern to the Jewish community and educates on the positions to take on them as well as how to carry out those positions most effectively. Through a national planning process, NJCRAC produces an annual Joint Program plan designed to serve as an advisory guide by member agencies such as ours. Local community relations organizations are free to accept, reject or modify the Plan's recommendations according to local needs and preferences.

ENDOWMENT FUND

478-6200

Director - Connie Kreshtool

The Endowment Fund was established to insure that educational, religious and social services are always available to the Jewish community. The Endowment Fund offers donors the opportunity to endow a service or institution of spe-

cial interest to them. Such gifts provide a lasting legacy for the community and record the names of the contributors in perpetuity. Through a bequest and/or donations of cash, securities, real estate, life insurance, State of Israel bonds

and other property to the Jewish Community of Delaware Endowment Fund donors are helping to preserve Jewish values and the Jewish heritage for their children and their grandchildren.

JFD Allocations

	1989-90 RECOMMENDED ALLOCATIONS	1989-90 INTERIM ALLOCATIONS
Local Agencies & Programs		
Albert Einstein Academy	39,500.	31,600.
Delaware Gratz Hebrew High School	31,490.	25,192.
Hillel Counselorship - U of DE	29,750.	23,800.
Jewish Community Center	99,060.	79,248.
Jewish Family Service	29,500.	23,600.
Judaic Workshop	1,179.	943.
Ki Tov	1,468.	1,174.
Milton & Hattie Kutz Home	200,000.	200,000. **
Lower Delaware Coordinating Committee	6,000.	4,800.
Newark Coordinating Committee	5,000.	4,000.
Jewish Voice	18,000.	14,400.
Jewish Community Relations Committee	7,300.	5,840.
Jewish Federation - Administration, Programs & Campaign	314,197.	282,777. ***
Endowment Fund	10,000.	8,000.
Youth Services Task Force	0.	0.
Sub Total - Local	\$792,444.	\$705,374.
National & Overseas Agencies	48,160.	38,526.
United Jewish Appeal	450,000.	360,000.
Operation Moses	0.	0.
Project Renewal	0.	0.
Capital Maintenance	24,396.	19,517.
TOTAL	\$1,315,000.	\$1,123,417.

** 100% of recommended allocation

***90% of recommended allocation

1989 CAMPAIGN RECAPITULATION (As of 11/1/89)

	1989 PROJECTED CAMPAIGN TOTAL	1989 CAMPAIGN 11-1-89
Campaign Achievement	\$1,315,000.	\$1,160,000.
Campaign Shrinkage	15,000.	15,000.
Balance for Allocation	\$1,300,000	\$1,145,000.
Unused Allocations	15,000.	15,000.
Other Unallocated Funds	-	-
Total Available for Allocations	\$1,315,000.	\$1,160,000.



alfred carlis 656-7069
 111 West 9th St. Wilm. All Charge Cards Accepted
 We're all ready for the holiday festivities.
 Children's clothing for boys & girls.
 Infant to size 14.

DOLLAR RENT A CAR THE LIVIN' IS EASY
 When you rent an 8 or 15 Passenger Van with or without a driver, carry your Vacation Luggage and Golf Clubs and let the livin' be easy for you.
 5 Convenient Locations
 DAVID ROSENBLATT 655-7117

BE BEEP ~ A TOY SHOP
 2900 CONCORD PIKE WILMINGTON, DE 19803 302-478-2667
 PRESENTS A CHILDRENS CONCERT FOR THE WHOLE FAMILY ~ FRED PENNER ~
 (Star of Canadian Television's long running "Fred Penner's Place" Now seen in the U.S. on cable T.V.'s "Nickelodeon")
 2:00 p.m. Sunday, November 19
 A.I. DuPont Middle School
 All tickets \$5.00 on sale in our store

BE PART OF TRADITION...JOIN — CONGREGATION BETH SHALOM
 Eighteenth Street and Baynard Boulevard Wilmington, Delaware 19802 (302) 654-4462

HERBERT A. YOSKOWITZ RABBI
 NORMAN P. SWERLING CANTOR
 ANDREW SALZER CANTOR EMERITUS
 ARLENE S. DAVIS EDUCATIONAL DIRECTOR
 FRANCES A. STEIN EXECUTIVE DIRECTOR
 CELINA G. RIEBMAN PRESIDENT

JEWISH HOLIDAYS

***Shabbat:** Every week, from sundown Friday until sundown Saturday. The Sabbath, known as the most important holiday, commemorates God's day of rest on the seventh day of Creation.



Hanukkah: Dec. 23-30, 1989. In 179 BCE, the Maccabees led a band of Jews in battle against invading pagan warriors who had desecrated the Temple. When the Maccabees regained Jerusalem, they found only enough oil to last one day in the Temple's eternal light. Miraculously, the oil lasted eight days, until more could be found. The Hanukkah menorah is lit for eight nights to celebrate that miracle. Children play dreidle, and foods fried in oil are customary. Hanukkah was declared a holiday by Judas Maccabee and his followers to celebrate the rededication of the Temple.

Tu B'Shevat: Feb. 10, 1990. This holiday, the New Year of the Trees, marks the coming of spring in Israel. It is celebrated by having picnics, planting trees and eating fruit.

Purim: March 11, 1990. The Feast of Lots recalls the rescue of the Jews of Ancient Persia from annihilation at the hands of Haman, who cast lots to choose this day for his plot. Queen Esther and her cousin, Mordechai, foiled his plan. On Purim, the Megillah of Esther is read, and the holiday is celebrated with riotous festivity, costumes and noisemakers. Hamantashen (three-cornered pastries) are the traditional food, and "mishloach manot" (gift packages) are exchanged.

***Passover:** April 10-17, 1990. The Exodus of the Jews from Egypt is celebrated with the eight-day festival of Passover. Ridding the home of "chometz" (leavened food) and eating only unleavened items commemorate the haste in which the former slaves fled Egypt, leaving them too little time for their bread

dough to rise. Jews traditionally give "maot chitim" (charitable contributions) to the poor at Passover and invite others to join their seders.

Yom Hashoa: April 22, 1990. The day is marked by memorials and dedications to those who perished in the Holocaust.

Yom Ha'atzmaut: April 30, 1990. Israel independence Day is celebrated festively by Jews around the world.

Lag B'Omer: May 13, 1990. This holiday is a tribute to Jewish martyrs and mystics. Children parade as soldiers to commemorate the Bar Kochba Rebellion, and synagogues are decorated with candles.



***Shavuot:** May 30-31, 1990. Shavuot marks the end of the counting of omer. It recalls Moses' receiving the Torah from God. The Megillah of Ruth is read, and all-night Torah study is customary. Confirmation ceremonies, dairy foods, honey and floral decorations are traditional.

Tisha B'Av: July 31, 1990. This solemn holiday is a reminder of the destruction of the first and second Temples and the loss of the Jewish State to the Romans. Lamentations is read, and it is traditional to fast.

***Rosh Hashanah:** Sept. 20-21, 1990. Literally meaning "head of the year." Rosh Hashanah marks the beginning of the Jewish calendar year. It begins a 10-day period of repentance and prayer which ends on Yom Kippur. The holiday is celebrated with feasts and apples dipped in honey to symbolize the hope for a sweet year to come.



***Yom Kippur:** Sept. 29, 1990. The Day of Atonement is the holiest day of the Jewish calendar, marking the end of the 10 days of repentance. It is spent in fasting and fervent prayer. Sounding of the shofar signals the end of the holiday.

***Sukkot:** Oct. 4-11, 1990. The harvest festival, or Feast of Tabernacles, is named for the temporary dwellings, decorated with fruit and vegetables, set up to recall the booths in which the Jews lived during their journey from Egypt. The holiday is also marked by processions with the lulav (palm branch with myrtle and willow) and etrog.



***Simchat Torah:** Oct. 12, 1990. The last day of Sukkot. Simchat Torah marks the end of the annual Torah reading and the beginning of the cycle for the coming year. The holiday is celebrated with singing, dancing and merry processions of men carrying Torahs and children waving flags.

Note: Holidays begin at sundown of the previous day.
 *Work is restricted.

SPORTS CAR SERVICE
 Independent SAAB Specialist
 Saab Specialists Since 1957
 Parts • Service • Used Saabs

3500 Governor Printz Blvd., Wilmington, DE 19802 764-SAAB

JEWISH COMMUNITY CENTER

101 Garden of Eden Road, Wilmington, Delaware 19803
(302) 478-5660

President - Martin I. Lubaroff

Executive Director - David H. Sorkin

The Jewish Community Center (JCC), is a non-profit membership organization which provides the Delaware Jewish community with diverse and extensive services. The Center offers its members and the entire community with a central place in which individuals, families, groups or organizations can best express their interests and have their social, intellectual, cultural or recreational needs met.

The Center provides Jewish educational programs, holiday celebrations, cultural and arts programs

Health and Fitness Center

- Five lane indoor swimming pool
- Adapted aquatic facility (handicapped accessible)
- Full court gymnasium
- Complete fitness center and free weight room
- Three racquetball courts
- Steam and sauna rooms
- Therapeutic whirlpool
- Fitness and aquatic classes for all ages

yearly

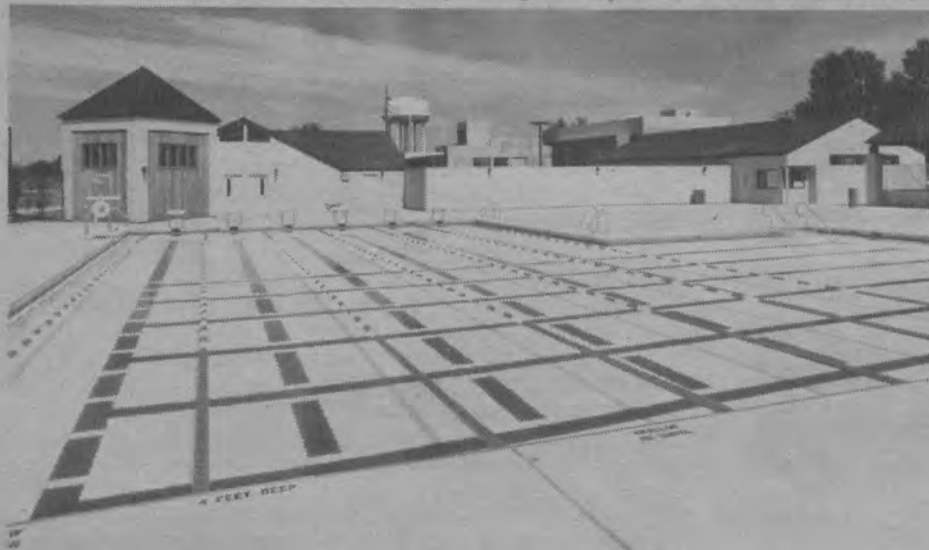
- Yom Ha'Atzmaut and Holiday celebrations
- Art gallery exhibitions
- Cultural and performing arts
- Special groups

Young Jewish Adults of Delaware

- Jewish education programs
- Chavurah discussion groups
- Trips
- Dinner parties
- Swim parties
- Socials
- Leadership training seminars

Senior Center

- Congenial, nutritious lunches served Monday through Friday



plus a side array of services listed below. The Jewish Community Center is partly funded by the Jewish Federation of Delaware, the United Way of Delaware and is affiliated with JWB. In addition, the Center offers its facilities to an ever enlarging number of Jewish organizations who use its building for their programs and services.

Jewish Family Campus

- 6,000 square foot outdoor swimming pool and toddler pool
- Four tennis courts
- Outdoor sports fields (basketball, volleyball, soccer and football)
- Large picnic areas with tables and cooking facilities
- A scenic nature park
- A crafts and nature center for enjoyable educational activities
- An outdoor amphitheatre with concerts and productions of community interest

- Outreach services
- Family life discussion groups
- Jewish celebrations and special events

- Yiddish group, Jewish enrichment and Shabbat discussions
- Israel oriented programs
- Trips
- Birthday parties
- Senior choir
- Current event seminars
- Swimming and physical fitness activities
- Card games
- Transportation to and from JCC on weekdays

Adult Services

- Classes and Clubs
- Finance seminars
- Jewish Education programs
- Jewish Great Books Discussion Group
- Trips to theatres and museums
- Jewish Book Month and Fair held

- Shabbat services
- Recreational activities

Teens of Delaware

- College caravans
- Ski trips
- Bowling and skating parties
- Yearly musical production
- Sporting events
- Teen and Junior Teen Council
- One day trips
- Extended overnight programs
- Jewish holiday programs
- Hayrides
- Dances and pool parties
- Teen and C.I.T. Camping program
- SAT College Prep program
- Babysitting courses
- Awareness seminars

Child and Family Division

- Pre-School programs
- Toddler's play
- Infant day care
- Kindergarten enrichment
- Drop-in babysitting service

- Lunch bunch and swim program
- Music and ballet classes
- Parenting education seminars
- After School Childcare (Kidsplace Program)
- "School's Out Days" - Vacation programs
- Youth theatre classes
- Tween connection program
- Fitness and aquatic classes
- Cultural and holiday programs

JCC Day Camp

- Day camp specialty weeks
- Early a.m. to late p.m. extended hours
- Transportation to and from camp on a daily basis
- Cook-outs, theme days and overnights

- Traveling teen camp
- Clubs for 1st through 6th graders
- Sports (Soccer, hockey, basketball, baseball, racquetball, tennis and archery)
- Art and crafts
- Recreational and instruction swim program
- Multi-media arts activities (theatre and creative dramatics)
- Exclusive access to the Brandywine Creek State Park

The Jewish Community Center is open approximately 88 hours per week to accommodate different lifestyles. For more information, visit the JCC at 101 Garden of Eden Road, just off Route 202, in Wilmington. (302) 478-5660.

E
A
T
I
N
*
T
A
K
E
O
U
T

475-5300

All That Food
Restaurant
(Formerly Modern Kosher)
1708 Naamans Road

475-9300

E
A
T
I
N
*
T
A
K
E
O
U
T

OPENING SOON

On or about Tuesday, November 7th

Featuring: Variety in Cooked
Chicken, Great Deli,
Special Salads & Desserts

**KOSHER CATERING
AVAILABLE**

RESTAURANT - CATERING - RESTAURANT

**Don't compete
with a
Kaplan student
—be one.**

Why? Consider this: After taking a Kaplan SAT prep course, thousands of students increase their scores 150, 200, 250 points, or more.

Why? Kaplan's test-taking techniques and educational programs have 50 years of experience behind them. We know students. And we know what helps boost their confidence and scoring potential.

So if you need preparation for the SAT, call us. Why be at a disadvantage?

KAPLAN
STANLEY H. KAPLAN EDUCATIONAL CENTER LTD.

We also have courses for LSAT, GRE, GMAT, MCAT and the rest of the "alphabet soup" of standardized tests.

Call today for information
(302) 571-8444

Suite 60-Independence Mall
Wilmington, DE 19803

EDUCATION

JEWISH COMMUNITY CENTER CHILD AND FAMILY DIVISION

101 Garden of Eden Road, Wilmington, Delaware 19803
 Early Childhood Services - Michelle Margules, Chair; Myrna Ryder, Co-Chair
 Early Childhood Services Director - Marilyn Forbes
 Children's Services - Susan Gleich, Chair; Rona Caplan, Co-Chair
 Children's Services and Camp Director - J.J. Alter

Part-time Programs
Morning Pre-School Program (GAN)
 9:00 - 11:30 a.m.
 Two Year Olds through Kindergarten:

This educational program helps prepare children for school, while developing their Jewish identity. There is an excellent staff-to-child ratio and all teachers are certified.

Activities include language development, number readiness, arts and crafts, music, outdoor play and snack.

Afternoon Recreational and Enrichment Programs (MAON)
 11:30 a.m. - 5:45 p.m.
 Three Year Olds through Kindergarten:

Maon includes kosher lunch, a rest period and a variety of age-appropriate social and recreational activities such as arts and crafts, swimming, gym games and outdoor activities. Transportation from public kindergarten and optional enrichment classes are available at an additional fee.

Full-Time Programs
Maon Yom
 7:15 a.m. - 5:45 p.m.

Walking Ones and Two Year Olds: Activities such as arts and crafts, story time and gym are geared to this age group, which meets in their own rooms, with their own staff.

Three and Four Year Olds: Morning pre-school programs along with afternoon enrichment activities are combined for these children.

Kidsplace (After-School Care, Snow Day and School Vacation Programs)

Kindergarten through 3rd Grade or 4th - 6th Grade:

Kidsplace means fun and your child can join our Kindergarten through 3rd grade or 4th through 6th grade programs. Activities include swimming, gym, sports, outdoor fun and a homework room. A wide range of aquatic and fitness classes are available through the Recreational Services Division. All this plus transportation, snacks, special vacation trips, snow day programs and much more with our active staff.

Safe, reliable transportation is available during the school year. Transportation from selected schools to the Center, and from schools to Hebrew Schools is available for registered children in kindergarten through sixth grade. For more information on the Jewish Community Center's Child and Family Division programs, call (302) 478-5660.



ALBERT EINSTEIN ACADEMY

101 Garden of Eden Road, Wilmington, DE 19803
 (302) 478-5026

Principal - Eleanor Weinglass

President - Dr. Avrene Brandt

The Albert Einstein Academy combines an excellent secular education with a rich background in Jewish traditions, Bible, history and Hebrew. In small classroom settings, this school combines the best of both worlds, the pursuit of academic excellence and a positive sense of Jewish identity. New students are welcome in all grades.

DELAWARE GRATZ HEBREW HIGH SCHOOL

101 Garden of Eden Road
 Wilmington, DE 19803
 478-5026

Principal - Elaine Friedberg

President - Perry Goldlust

Delaware Gratz provides a five year program of Jewish studies on a secondary level which includes Bible, Jewish history, ethics, issues, law and Hebrew literature and language utilizing the Ulpan method for conversational Hebrew.

Students are provided with the knowledge and enthusiasm that helps them to develop a positive Jewish identity, to have concern and responsibility toward fellow Jews and to counter the secularism and agnosticism that frequently permeates college campuses.

All Gratz teachers are certified and knowledgeable in their fields and have both talent and experience relating to adolescents.

High school and college credits as well as teaching certificates are granted to those who complete the curriculum.

Classes meet Sundays from 10 a.m. to 1 p.m. and Tuesdays and Thursdays, 7 p.m. to 9:10 p.m.

The Judaic Workshop

The Judaic Workshop provides a Jewish educational experience to educationally exceptional young adults who have learning disabilities and who cannot be served by

congregational religious schools. Presently housed at Adas Kodesch Shel Emeth, a Jewish enrichment program is held every week for those

who would not otherwise have any Jewish education.

For more information contact Helen Gordon at (302) 762-2705.

Ki Tov Class

Ki Tov is a program for children who cannot be mainstreamed into regular afternoon class, but who also do not belong in the "Judaic Workshop for Exceptional Children." The children enrolled in this pro-

gram are capable of learning about themselves as Jews and about Holidays, Bible and language, but must be taught in a small class setting using individualized instruction and attention. In the past, Jew-

ish education for these children has been neglected. The program is financially supported by the Jewish Federation of Delaware.

For more information contact Helen Gordon at (302) 762-2705.

YOUTH GROUPS

B'nai B'rith Youth Organization

BBYO is housed at the Jewish Community Center. AZA (boys) and BBG (girls) serves teens in 9th through 12th grades. This program provides area teens with a chance to develop leadership skills through participation in a variety of social, athletic, cultural, educational, religious activities and community service.

For more information about BBYO contact:

Dover BBYO	Mark Wintjen	President	734-1089
Newark BBYO	Marc Cohen	President	738-6740
Wilmington AZA	Marc Blumberg	President	478-6839
Wilmington BBG	Staci Levin	President	479-5449

Beth Emeth Synagogue Youth Group

BESTY is a Mid-Atlantic Federation of Temple Youth which provides programs for 9th through 12th graders. The youth group helps teens develop leadership, meet new friends, participate in social, athletic, educational and religious activities. NIFTY is the national organization of the youth group. Regional and national conclaves are held throughout the year.

For more information about BESTY contact:

BESTY	9th thru 12th grades	Advisor: Peter & Roxanne Kline	998-3379
BESTY Jrs.	7th & 8th grades	Advisor: Gail Budin	764-8943

Kadima

Kadima is an international youth organization sponsored by the Department of Youth Activities of the United Synagogue of America. Geared towards grades 5 through 8, it offers each participant the chance to see that being Jewish and part of a synagogue can and does mean having a good time. The organization provides a number of social activities including field trips, overnights, community service activities and fundraisers.

Advisors: Mary and James Davis 324-9091

B'nai B'rith Hillel

Chair of Advisory Committee - Dr. Vivian Klaff
Director - Brant Rosen

B'nai B'rith Hillel has a presence on the University of Delaware campus 300 students strong. Currently they hold several activities a week, providing a mix of social, cultural, religious and educational programs. Programs include: bagel and lox brunches, Shabbat dinners, weekly Kabbalat Shabbat services, movie nights, trips to nearby cities, and Israel nights. In addition to regular events and programs, students this year were able to attend high holiday services on campus. Steady growth of this organization will soon necessitate a move to larger facilities.

For more information, call the Hillel office at 453-0479.

All Delaware synagogues except Machzikey Hadas have religious school programs. Contact the individual congregation for information about these religious schools.

Fall into Fashion



1733 Marsh Road
(across from Gaylyn Shopping Center)
Wilmington, DE 19810
478-7458

Visa/Mastercard accepted
Open daily 10-5
Closed Sunday

My Sister's Shoes

... anything but ordinary

CONNIE'S CORNER

- Full upholstery and repair service
- Guaranteed stain resistant treated fabrics available
- Antique furniture restored
- Appointments at your convenience

CALL CONNIE SPALDING
(302) 995-2798

Invitations - Announcements
Stationery - Business & Social
Party Accessories
Personalized Items, Etc.

"The Finest Selection of Exclusive Papers and Gifts"

Charlotte Fischer 656-8604



Largest Selection of Lighting at The Lowest Prices Anywhere **GUARANTEED!!** and no sales tax!

- Chandeliers • Paddle Fans • Track & Recessed Lighting
- Table & Floor Lamps • Plus Much More!

We Offer Whole House Discounts! 6 Upstair Showrooms!

PRESENT COUPON FOR

Gross 50% OFF LIST

Lighting Center Since 1919

4th & Orange Sts. WILMINGTON, DEL. CALL (302) 655-5561

HOURS
M-F 8-5:30
WED TILL 9 PM
SAT 9 AM - 3 PM
OTHER HOURS BY APT.

*DOES NOT INCLUDE FLOURESCENT, TRACK & RECESSED LIGHTING. IN STOCK ONLY

EXPIRES JAN. 31, '90

CALL US FIRST!

HAPPY HARRY'S HOME HEALTH CARE CENTER

IN-HOME EQUIPMENT PROGRAMS

- RESPIRATORY
- REHABILITATION AIDS
- DIABETES MONITORING
- PAIN CONTROL DEVICES
- OSTOMY SUPPLIES
- ORTHOTICS • HOSIERY

—PLUS—
COMPLETE ENTERAL AND I.V. SYSTEMS WHICH INCLUDE CHEMO AND ANTIBIOTIC THERAPY

Phone (302) 654-3019

- FREE IN-HOME EVALUATION
- FREE DELIVERY AND SET-UP
- WE BILL MEDICARE AND ALL MAJOR INSURANCE COMPANIES

HOME HEALTH CARE SERVICE

EVERYTHING FOR YOUR 16-A TROLLEY SQUARE ALSO AVAILABLE AT ALL HAPPY HARRY DISCOUNT DRUG STORES!




Temple Beth El

301 Possum Park Road
Newark, Delaware 19711
(302) 366-8330

A warm and caring Jewish Community serving Greater Newark, Hockessin, Pike Creek Valley, and many areas in Maryland and Pennsylvania.

Rabbi: David Kaplan Administrator: Ann Herman

Spiritual
Our congregation is liberal in terms of religious beliefs and personal observance, but respects and observes tradition. our services are a combination of traditional Hebrew prayers and modern English readings.

Educational
Our Hebrew School presently has an enrollment of 150 children. We are egalitarian in our Bar and Bat Mitzvah preparation and are proud of the high degree of participation in our confirmation program. Programming for pre-schoolers, as well as adult education, are also top priorities.

Community
Temple Beth El strives to provide its congregants with the sense of belonging and personal relationships that result when Jewish people join together as a community. With approximately 200 family members, each member is considered our most valuable asset, and is encouraged to participate in all Temple activities. We strive to provide an intellectual atmosphere in which ideas can be discussed and debated. Sisterhood, Men's Club, and BBYO provide many social opportunities for teens and adults.

Temple Beth El's modern building includes a sanctuary, classrooms, a library, social hall, and a kosher kitchen.

For membership information, please call the Temple at 366-8330

Affiliated with the Federation of Reconstructionist Congregations and Havurot.

MACHZIKEY HADAS CONGREGATION

WELCOMES ALL THE UNAFFILIATED TO JOIN US FOR HOLIDAY & SABBATH SERVICES

Friday evenings at 8:00 p.m.
Saturday mornings at 9:00 a.m.

Cantor - Marvin Zuckerman

B'nai B'rith Building,
800 Society Blvd., Claymont
798-6846

JEWISH FAMILY SERVICE

101 Garden of Eden Road
Wilmington, Delaware 19803
478-9411

President - Leslie Newman Executive Director, Arnold Lieberman, LCSW

Jewish Family Service offers a range of services for Jewish individuals and families.

INDIVIDUAL AND FAMILY COUNSELING

Jewish Family Service offers skilled professional counseling in dealing with family problems such as marital difficulties, parent-child relationships, mental and physical health, individual adjustment, and changes in life situations.

SPECIAL SERVICES TO THE ELDERLY

Services include counseling, friendly visiting, monitoring, linkage to needed services, and case management.

JEWISH FAMILY LIFE EDUCATION

Group discussion designed to enable individuals and families to better cope with phases of normal development and situational stress. These programs also promote the

growth of Jewish identity and the Jewish Family and community.

COMMUNAL SERVICES

Services include visitation to Jewish patients in institutions; holiday assistance; assistance to Jewish transients; and limited material and financial aid.

INFORMATION AND REFERRAL

Jewish Family Service can help if you are not sure what kind of help you need; whether it exists; where it

is to be found; or how to avail yourself of it.

RESETTLEMENT

Jewish Family Service assists in the resettlement of Soviet families in our community. Jewish Family Service staff and volunteers provide various services designed to enable the refugees to become self-sufficient and assimilated in both the Jewish and general communities.

The agency office is open from 9

a.m. to 5 p.m. Monday, Tuesday, and Thursday; Wednesday from 1 p.m. to 9 p.m.; Friday, 8:30 a.m. to 4 p.m. All appointments must be scheduled in advance by calling the office. Fees are charged on a sliding scale, and some counseling services are covered by health insurance. Although the agency has a Jewish orientation, the services are available to anyone in need of help. Strict rules of confidentiality are maintained.

Now, You Can Wear Bifocals Without Wearing Glasses.



Let us open your eyes to the new world of bifocal contact lenses, where you can look and feel better about yourself.

They're now available in a design that makes successful lens wear a greater possibility than ever before. If you've tried bifocal lenses in the past and weren't satisfied with them, it may be time to try again.

Call us today for your introduction to bifocal vision without glasses.

You'll see a clear difference!

DR. ALLAN TOCKER
Optometrist
BRANDYWINE SQUARE
2900 CONCORD PIKE
WILMINGTON, DE 19803
478-8930

TELEPHONE
DEL. (302) 478-3727
PA. (215) 724-5772

GUS REISSMAN & BRO. CO.
Insurance

3510 Silverside Road
P.O. Box 7490
Wilmington, DE 19803

ASHER RUBIN

JEWISH INTRODUCTIONS INTERNATIONAL
Delaware's local, innovative & personalized Jewish Introductions Service.

Ages 21-101
Let us find That Special Someone

In Delaware Call
1-800-442-9050 102 Centers to Serve You Across North America



Celebrations by Rick

DISC JOCKEY FOR ALL OCCASIONS
CELEBRATE GOOD TIMES!
RICK COHN
(215) 388-7273

PARTIES
WEDDINGS
REUNIONS

SINGLE?

A Civilized Approach to Marriage

Traditional values and lifestyles are once again in fashion. Many people of culture and attainment seek marriage and commitment. However, few can balance success and an active social life.


The Bella Group brings together Delaware and Philadelphia professional singles. A blend of executive search techniques, educated intuition, and frequent confidential consultation can help you find someone as special as you are.

The Bella Group
Matchmaking Specialist
475-1129

**MEDCLAIM:
JUST THE HELP YOU NEED!**

MEDCLAIM is in the business of helping people file their medical insurance claims. We offer three levels of service designed to match your needs:

- **BACK CLAIMS FILING** - Filing or refiling old claims when you received inadequate payment
- **ANNUAL CLAIMS FILING** - Accurate record keeping and filing of medical insurance claims on an on-going basis.
- **INSURANCE POLICIES REVIEW** - Professional review of your existing insurance policies and your current needs, to help you determine your optimum coverage. (MEDCLAIM is not affiliated with any company that sells insurance).



Let MEDCLAIM handle your medical insurance record keeping, filing and follow-up. You will receive the greatest benefit of all - Peace of Mind! All MEDCLAIM fees are tax deductible.

MEDCLAIM
MEDICAL CLAIMS FILING SERVICE


P.O. Box 5565
Wilmington, DE 19808
(302) 737-3890

WE GET RESULTS • YOU GET PEACE OF MIND
MEMBER-BETTER BUSINESS BUREAU OF DELAWARE

Discover a different Delaware....

the one you see from the windows of a vintage train's passenger coach. View the woodlands and open countryside of the Red Clay Valley aboard the Wilmington & Western Railroad. During its May through October operating season, the railroad's schedule includes weekend trips to Mt. Cuba Picnic Grove and the quaint village of Hockessin in addition to special events the whole family will enjoy.

For information on train times and fares call (302) 998-1930 All Aboard!



WILMINGTON & WESTERN RAILROAD

CONGREGATIONS



ADAS KODESCH SHEL EMETH

(Traditional)
Washington Blvd. & Torah Way
Wilmington, DE 19802
762-2705

Rabbi: Howard R. Matasar
Rabbi Emeritus: Leonard B. Gewirtz
Cantor: Morris Markowitz
President: Howard H. Simon



Rabbi Howard R. Matasar

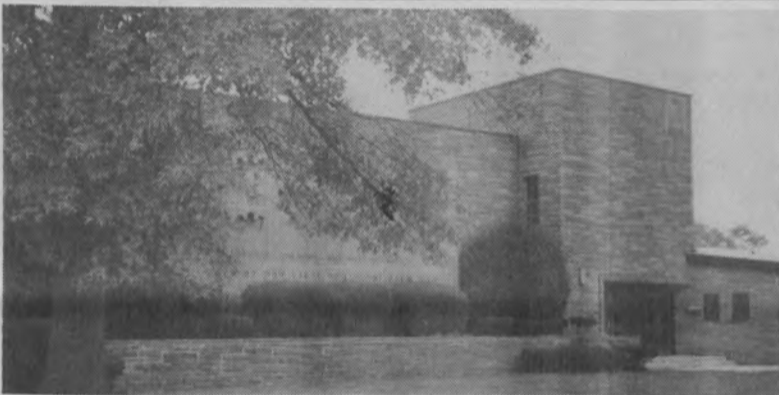


Rabbi Herbert Yoskowitz

CONGREGATION BETH SHALOM

(Conservative)
18th & Baynard Blvd.
Wilmington, DE 19802
654-4462

Rabbi: Herbert Yoskowitz
Cantor: Norman Swerling
President: Celina Riebman



BETH EMETH CONGREGATION

(Reform)
300 West Lea Blvd.
Wilmington, DE 19802
764-2393

Rabbi: Peter Grumbacher
President: Manfred Katz



Rabbi Peter Grumbacher



Rabbi David Kaplan

TEMPLE BETH EL

(Reconstructionist)
301 Possum Park Road
Newark, DE 19711
366-8330

Rabbi: David Kaplan
President: Andrew Zeitlan



BETH SHOLOM CONGREGATION

(Conservative)
Queen & Clara Streets
Dover, DE 19901
734-5578

Rabbi: Moshe Goldblum
President: Helen Gelof



Rabbi Moshe Goldblum

For information regarding
* Sisterhoods
* Brotherhoods
* Men's Clubs
* Singles & Couples Groups
Contact the individual synagogues

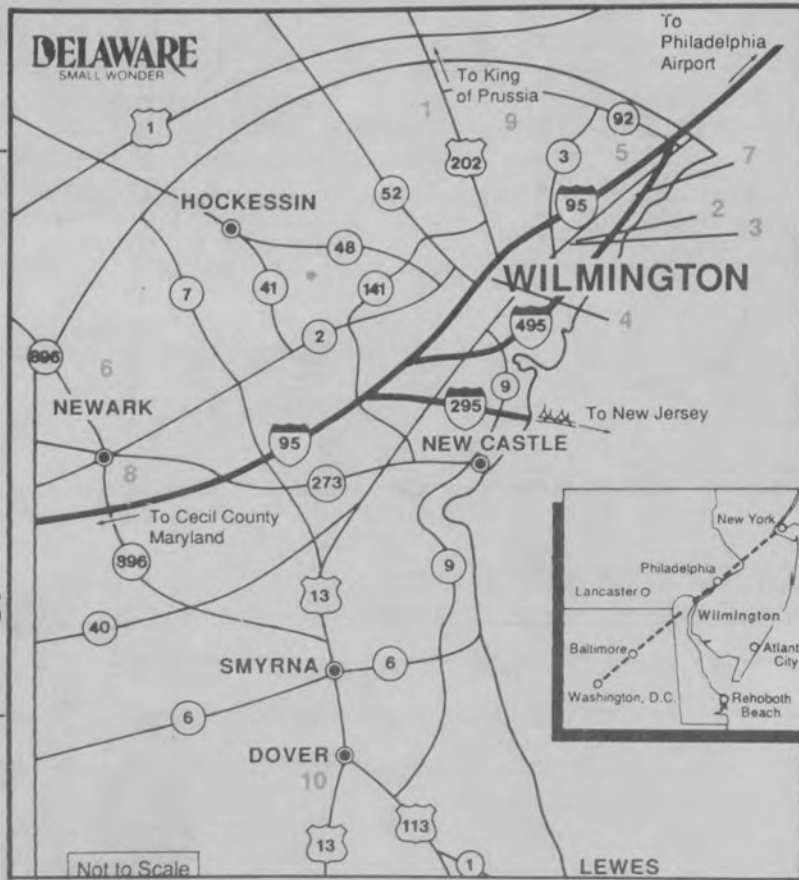
MACHZIKEY HADAS

(Traditional)
B'nai B'rith Building
8000 Society Drive
Claymont, DE 19703
792-1545

Cantor: Marvin Zukerman
President: Jacob Levine

**Delaware's
Synagogues Are Waiting
To Welcome You!**

Locating Delaware's Jewish Organizations



Map Key

- 1 - Jewish Federation of Delaware
The Jewish Voice
Jewish Community Center
JCC Preschool
Jewish Family Service
Albert Einstein Academy
Gratz Hebrew High School
Jewish Family Campus
- 2 - Adas Kodesch Shel Emeth Congregation
- 3 - Beth Emeth Congregation
- 4 - Beth Shalom Congregation
- 5 - Machzikey Hadas Congregation
B'nai B'rith House
- 6 - Temple Beth El
Chabad House
Alpha Epsilon Pi Fraternity
- 7 - Kutz Home
- 8 - Hillel
Chabad House
- 9 - Brandywine Country Club
- 10 - Congregation Beth Shalom



When your baby is only minutes old, every second counts.

When new life is fragile, you want every resource available to assure the health of your baby and to ensure your peace of mind.

When every moment counts, count on us.

That's why The Family Birthplace at St. Francis Hospital is staffed by neonatologists - specially trained pediatricians who care for newborns at risk. And that's why St. Francis provides a Special Care Nursery where advanced technology and a skilled team of health professionals nurture newborns with special medical needs.

This attention to caring is practiced throughout The Family Birthplace, where nearly 1,500 babies are welcomed to the world each year.

We begin caring for your family well before delivery, with classes in early pregnancy education, childbirth preparation, and programs to prepare young siblings. We designed The Family Birthplace to remind you more of home than hospital, with birthing suites



New life can be fragile. Carlos Duran, M.D., a neonatologist, ensures that babies born at St. Francis Hospital receive skilled care.

furnished with comfortable furniture, soft lighting and decorative wall-paper. It's a special place where your whole family will be welcome to meet the new arrival.

Our special care continues after birth, too. The Family Birthplace practices "perinatal" nursing designed to give new mothers thorough instruction on how to care for themselves and their baby. And as your child grows, we offer the finest in pediatric care through the St. Francis Pediatric Center, a physicians group practice located at the Hospital, and through such innovative programs as Care-A-Lot, an affordable daycare service for sick children.

Your family's special moment deserves our special care.

To learn more about The Family Birthplace and pediatric services available at St. Francis Hospital, ask your physician. Or call The Family Birthplace at 652-LIFE. St. Francis and you, partners for life.

ST FRANCIS
HOSPITAL
Wilmington, Delaware

YOUR JCC HAS SOMETHING FOR EVERYONE...

"Put Your Shayna Punim in the Picture"

MAYVENS AND MACHERS

From the smallest kinder to the most active Bubbies and Zaydies...we're your JCC Mishpacha. Take a look at all that's in store...



KVETCH AND STRETCH

Whether working up a shvitz or schmoozing poolside, our facilities and activities accomodate all lifestyles.



SHARE A SIMCHA...

From the sweetness of the New Year to the glow of Chanukah and the merry-making of Purim, there always seems to be a party going on!

DO A MITZVAH...

Like any mishpacha, ours don't stand alone. Service to special populations and those in need strengthens our commitment to the community.



STUDY AND GROW

The value of learning is ever-present at the JCC. Pre-schoolers experiencing the joys of Shabbat, children learning to share experiences, and adults exchanging ideas are a few of the "chapters in our textbook".



"Oy, do we have a Center for you..."
Next time you're in the neighborhood, stop by! Anyone on our staff will be happy to show you around the facilities. You could also give us a call - (302) 478-5660.

Advertisement

PHYSICIANS

<p>Richard F. Brams, M.D., P.A. ALLERGY 2300 Pennsylvania Avenue Wilmington, DE 19806 655-4471</p>	<p style="text-align: center;">PHYSICIANS</p>	<p>Kenneth R. Pearlberg, M.D. OPHTHALMOLOGY 3411 Silverside Road Wilmington, DE 19810 478-5895</p>
<p>Steven P. Cook, M.D., F.A.C.S. EAR, NOSE & THROAT 1701 Augustine Cutoff, Suite 17 Wilmington, DE 19803 Delaware Eye Associates, P.A. 655-7255</p>	<p>Dr. Abraham A. Golden OSTEOPATHIC PHYSICIAN & GENERAL PRACTICE 1400 Philadelphia Pike Wilmington, DE 19809 798-7492</p>	<p>Pediatric Associates David M. Epstein, M.D., & David Levitsky, M.D. PEDIATRICS 110 Christiana Medical Center Newark, DE 19702 368-8612/368-1561</p>
<p>Delaware Eye Associates, P.A. Ralph S. Milner, M.D. OPHTHALMOLOGY 2006-B Foulk Road Wilmington, DE 19810 475-2500 2055 Limestone Road Wilmington, DE 19808 992-0420</p>	<p>Leon Morton Green, M.D., P.A. PSYCHIATRY ADULT, ADOLESCENT & FAMILY 1601 Milltown Road, Lindell Square, Suite 8 Wilmington, DE 19808 994-8092</p>	<p>Psychiatric Services, P.A. Harold Graff, M.D. PSYCHIATRY 22b Trolley Square Wilmington, DE 19806 654-4465</p>
<p>Delaware Eye Associates, P.A. Dorothy M. Moore, M.D. OPHTHALMOLOGY 2006-B Foulk Road Wilmington, DE 19810 475-2500 2055 Limestone Road Wilmington, DE 19808 992-0420</p>	<p>Rebecca Jaffe, M.D. and David L. Ettinger, M.D. FAMILY PRACTICE 1941 Limestone Road, Suite 107 Wilmington, DE 19808 992-0200</p>	<p>Psychiatry Associates, P.A. Robert N. Dumin, M.D. PSYCHIATRY 1500 B Shallcross Avenue Wilmington, DE 19806 658-1469</p>
<p>Delaware Eye Associates, P.A. Richard L. Sherry, M.D. OPHTHALMOLOGY 2006-B Foulk Road Wilmington, DE 19810 475-2500 2055 Limestone Road Wilmington, DE 19808 992-0420</p>	<p>Susan Keri Jonas, M.D. GASTROENTEROLOGY Omega Professional Center J-30 Omega Drive Newark, DE 19713 454-0362</p>	<p>David Rich, M.D. FAMILY PRACTICE 1005 N. DuPont Highway New Castle, DE 19720 328-6644</p>
<p>Stuart S. Felzer, M.D. INTERNAL MEDICINE 2601 Annand Drive, Heritage Professional Plaza, Suite 4, Wilmington, DE 19808 998-3334</p>	<p>Dr. Jeffrey K. Kerner OSTEOPATHIC MANIPULATION & GENERAL PRACTICE 200 Bassett Avenue New Castle, DE 19720 328-0669</p>	<p>Vision Concepts Dr. Allan Tocker OPTOMETRY Brandywine Square, 2900 Concord Pike Wilmington, DE 19803 478-8930</p>
<p>Stephen H. Franklin, M.D. OPHTHALMOLOGY 1207 N. Scott Street Wilmington, DE 19806 652-3353</p>	<p>Maurice Liebesman, M.D. PEDIATRICS 1202 Foulk Road Wilmington, DE 19803 762-6222</p>	<p>Andrew G. Weinstein, M.D. ALLERGY & CLINICAL IMMUNOLOGY 310 Christiana Medical Center Christiana, DE 19702 368-0500</p>

Advertisement

DENTISTS

<p>Dr. Jerome Eisenman GENERAL DENTISTRY 29 The Commons 3522 Silverside Road Wilmington, DE 19810 478-1504</p>	<p>Dr. Edward J. Hertzfeld GENERAL DENTISTRY 1900 Washington Street Wilmington, DE 19802 654-4484</p>	<p>New Castle Dental Associates Dr. Steven Chamish Dr. Robert A. Friedberg Dr. Harold Ufberg GENERAL DENTISTRY 1111 Wilmington Road New Castle, DE 19720 328-1513</p>
<p>Beverly H. Friedberg ENDODONTICS (Root Canal) 138 Cathedral Street Elkton, MD 21921 301-392-9258</p>	<p>Irvin Hockstein, D.D.S., M.S. ORTHODONTIST 1202 Foulk Road Wilmington, DE 19803 764-1500</p>	<p>Dr. Gary D. Safian & Dr. Ralph Tomases GENERAL DENTISTRY 707 Foulk Road Wilmington, DE 19803 652-8656</p>
<p>Dr. Edwin L. Granite ORAL & MAXILLOFACIAL SURGEON 2101 Foulk Road Wilmington, DE 19810 475-1122</p>	<p>Leon Levy, D.D.S. PERIODONTIST 1905 Delaware Avenue Wilmington, DE 19806 654-5701</p>	<p>Sirkin-Levine Dental Assoc., P.A. Dr. Alan R. Levine & Dr. Stanford Sirkin GENERAL DENTISTRY 2018 Naamans Road Wilmington, DE 19810 475-3743</p>

ATTORNEYS

<p>Sidney Balick & Associates Sidney Balick PERSONAL INJURY, INCLUDING WORKER'S COMPENSATION Suite 604, Mellon Bank Center Tenth & Market Streets Wilmington, DE 19801 658-4265</p>	<p>Cooch and Taylor Scott A. Green, Esq. GENERAL PRACTICE P.O. Box 1680 Wilmington, DE 19899 984-3814</p>	<p>Roeberg, Haase & Associates, P.A. Robert S. Weiner, Esq. GENERAL PRACTICE P.O. Box 712 Wilmington, DE 19899 658-8700</p>
<p>Berg, Bifferato, Tighe & Cottrell, P.A. Howard M. Berg GENERAL PRACTICE First Federal Plaza, P.O. Box 33, Wilmington, DE 19899 571-8600</p>	<p>Jerry A. Hyman, Esq. TAX, ESTATE PLANNING & RETIREMENT PLANNING 1102 Drummond Plaza Newark, DE 19711 731-1400/731-1040</p>	<p>Jospeh Yucht, Esq. GENERAL PRACTICE 6 East 13th Street Wilmington, DE 19801 655-8839</p>

ACCOUNTANTS

<p>Belfint, Lyons & Shuman, P.A. Eileen T. Conner CPA - TAX 200 West Ninth Street Plaza Wilmington, DE 19899 655-8894</p>	<p>Goldman & Herring Mark H. Goldman & Alan B. Herring ACCOUNTING & TAX SERVICES Suite 2F, Foulk Plaza 701 Foulk Road Wilmington, DE 19803 656-8448</p>	<p>Mitchell B. Smith & Company, P.A. Mitchell B. Smith, CPA TAX & FINANCIAL PLANNING FOR BUSINESSES & INDIVIDUALS 102 Rodney Building Concord Plaza 3411 Silverside Road Wilmington, DE 19810 478-8805</p>
--	--	---

723

Rhawnhurst GLATT KOSHER MEAT MARKET

723

8259-8261 Bustleton Avenue • Philadelphia, PA

stands ready to supply the wants of the community of Wilmington, Delaware and surrounding communities with the finest of

- PRIME BEEF • VEAL • LAMB • FRESH-SLAUGHTERED POULTRY
- KOSHER DELICATESSEN

Please Contact Us For More Information

(215) PI2-5287

(PLEASE ASK FOR BOB)

PROTECT THIS WINTER

DETAILING
INTERIOR • EXTERIOR • ENGINE
WITH 6 MONTH OR 1 YEAR GUARANTEE
TEFLON® PAINT PROTECTION

OUR ULTIMATE INTERIOR AND EXTERIOR DETAIL \$14900

654-6CAR

**SECURITY SYSTEMS
RADAR DETECTORS
SUN ROOFS
CUSTOM ACCESSORIES**

LYC

LOVE YOUR CAR
APPEARANCE & PROTECTION CENTER

2nd Street and Greenhill Avenue

101 School Road, Alapocas
Wilmington, Delaware 19803



WILMINGTON FRIENDS SCHOOL

invites
families interested in enrollment
to an

OPEN HOUSE

Wednesday, November 8

7:30-9:00 p.m.

- Grades PK-4 Lower School Campus
- Grades 5-12 Upper School Campus

FINANCIAL AID, CHILD CARE AND BUS SERVICE AVAILABLE

575-1130

FOKAS CONSTRUCTION HOME IMPROVEMENT

Remodeling & Renovations • Additions • Kitchens
Baths • Decks • Porches, • Roofing • Siding • Carpentry

CALL (302) 994-7038

**WE CAN DESIGN YOUR BUSINESS SOFTWARE
EXACTLY THE WAY YOU WANT IT TO BE**

Hoover Computer Services

- Computer Programming and Consulting
- Complete Business Software
- Accounting Programs



SPECIALIZING IN MULTI-USER SYSTEMS

313 DAKOTA AVENUE
WILMINGTON, DE 19803

LARRY HOOVER
SUSAN HOOVER
(302) 764-7367



WE KNOW HOW TO HELP

WILMINGTON 575-1700
 NEWARK 738-3500
 CONCORD PLAZA 478-6110
 DOVER 1-734-5379

Gilbert J. Spiegel
Founder

Pat Spiegel Chalpin
President

House of Watches

EXPERT WATCH & JEWELRY REPAIRING
JEWELRY & WATCHES
SILVER, PEWTER, BRASS
DIAMONDS

R. J. BERMAN
PHONE 654-7751
1330 WASHINGTON STREET
WILMINGTON, DE 19801

G. A. BERMAN
PHONE 478-3098
2505-B CONCORD PIKE
WILMINGTON, DE 19803



We're not just
another
blin lady...
**We do justice to
your windows!**

40% OFF

LouverDrape® Vertical Blinds



We install at the Beach!

- Draperies, tool
- Cornick
- Swags/Ballours
- Wallpaper

MADE IN THE SHADE

Talleyville Towne Shoppes
3652 Silverside Rd., Wilm.

478-6082

MILTON & HATTIE KUTZ HOME

704 River Road, Bellefonte, Wilmington, DE 19809, 764-7000
 President - Carolyn B. Silverman
 Director - Dan Thurman Kutz Home Auxiliary - Shelley Mand



The Kutz Home offers its residents the security of a comprehensive medical, nursing, religious, recreational and social program. The Home is geared toward maximizing the individual resident's living satisfaction through meaningful and enriching activities. Where possible, residents are involved in community programs in addition to the many and diverse activities in the Home. Located in a picturesque setting, the Kutz Home is a bright and attractive facility. Funds raised by the

Kutz Home Auxiliary enable ongoing refurbishing of the physical facility, which is nearly 30 years old. Food service at the Home is supervised by a *Mashgiach* to assure *kashruth*. Sabbath and holiday services are conducted in the Home's synagogue. The Kutz Home is licensed and accredited by government regulatory agencies as an intermediate and a skilled nursing facility, and participates in the *Medicaid* program. Admission to the Home is based strictly on need.

Personality

PERSONALIZED STATIONERY
 MONOGRAMMED LUCITE
 INVITATIONS & CARDS
 DUCKS - BUNNIES - BEARS - CATS

ORDER NOW FOR THE HOLIDAYS
 20% DISCOUNT

MARIAN B. LINDBERGH
 2010 KYNWYD RD.
 WILMINGTON, DE 19810

BY APPOINTMENT
 (302) 475-4855

CHEF FROM JAPANESE RESTAURANT
 SELECTED "PHILLY'S BEST" FOR 2 CONSECUTIVE YEARS

Yama Japanese Restaurant

Sushi, Sashimi, Teriyaki, Tempura, Sukiyaki, Seafood, House Specialites and many more

Mon.-Fri. 11:30a.m.-10 p.m.
 Sat. 5 p.m.-10 p.m.
 Sun. 4 p.m.-9:30 p.m.

You order 9 lunch or dinner entrees and get the 10th one FREE. This offer per person only

1726 Marsh Road (Rt. 3)
 Graylin Crest Shopping Center
 (302) 478-4863

Either way,
the odds are in your favor.

Four to One

Robert Half was rated best by four to one over the next national specialist in financial, accounting and bookkeeping personnel. This was revealed in a national survey of personnel directors conducted by an independent research firm. So don't take chances. Call the specialist rated best by personnel experts.

Five to One

A national survey by an independent research firm showed Accountemps the clear winner by a five to one margin over the next national temporary specialist in accounting and bookkeeping personnel. So call us when you need a temporary specialist for a day, a week, a month or longer. You can count on the favorite.

ROBERT HALF
 of Wilmington, Inc.
The best of the best.

accountemps
 Division of Robert Half of Wilmington, Inc.
Where second best is not good enough.

475-4500

Brandywood Plaza • Foulk & Grubb Roads • Wilmington, DE 19810
 Abraham Bailis, Director

ALBERT EINSTEIN ACADEMY REPORT CARD

Individualized attention, small classes, & an atmosphere that makes each child feel important. *Fantastic!*

Superior, experienced teachers. All secular teachers are accredited. *Exceptionally loving teachers*

Confidence in oneself as a member of the Jewish community; depth and excellence in Judaic knowledge. *Excellent!*

Academic strength in a nurturing environment; very competitive standardized test scores. *Superior*

Focus on the total development of the child; program includes art, music, gym, computer. *A+*

A staff that is wholly committed & dedicated to each child's needs. *Outstanding*

Kindergarten
 Full day program
 Half Day program available

Grades: Kindergarten through 6th
 Admission dependent on space availability

For more information please call
 Mrs. Eleanor Weinglass, Principal 478-5026
Albert Einstein Academy
 "Where the tradition of Jewish learning continues"

Please Support Our Advertisers



BERGER BROS. INC
Office experts since 1919
3rd & Market Streets
Wilmington, Delaware
(302) 655-7166



Always the Freshest and Finest Seafood

FISH • SHRIMP
CRABMEAT
SCALLOPS
LOBSTERS • CLAMS

EAT IN OR TAKE OUT
Fresh & Frozen Seafood
Homemade Platters,
Sandwiches

BRANMAR PLAZA
Marsh & Silverside Roads
(5 doors to the right of theatre)
475-FISH 475-7000

PHILIP BERGER
Associate Broker

Weichert, Realtors

OFF.: 302-478-3800
RES.: 302-764-8384

Professional, competent real estate service since 1969



TECOT electric SUPPLY CO. inc.

Main Office
114 Concord Ave., Wilmington, DE 19802
(302) 421-3900

Branch
501 Interchange Bldg.,
Newark, DE 19711
(302) 368-9161

Branch
1030 Boot Road
Downingtown, PA 19335
(215) 873-0440

Tecot Systems Division
111 W. 22nd Street
Wilmington, DE 19802
(302) 421-3935

Branch
1603 Jessup St.
Wilmington
DE 19802
(302) 421-3925

Branch
2000 W. 41st Street
Baltimore, MD 21211
(301) 554-5800

THE DANEXX[®] COLLECTION
for kids too!

These warm and cozy boots are fashionable, yet waterproof for those nasty days.



Miss Topaz
Misses 13 to 4.
Red
Arctic White
Black

So ... For Parents who want the best for their children ...

DANEXX[®]
for kids too!

Miss Icechips
Childs 8 to Misses 4.
Pink, Arctic White



THE COLD REMEDY



Welcome to DELAWARE

MISTER KLEEN, INC.

Coin Laundry and Dry Cleaning Centers

Midway Shopping Center **Chestnut Run Shopping Center**
998-7855 998-7577

Sylvan Taub, President

10% OFF 10% OFF WINTER BOOTS WITH THIS COUPON 10% OFF

Pike Creek Shopping Center
Pike Creek Valley
994-5057

Concord Mall
Wilmington
478-5124

College Square Shopping Center
Newark
731-8581

10% OFF

Expires 11/16/89



CEP CHILD CARE CENTER

- Modern New Facility
- Meals and Snacks
- Staff Trained To Meet State Requirements
- Weekly Music Program
- Summer Camp Ages 5 Through 10 Years
- Before & After School Program
- Field Trips
- Parents Always Welcome

INFANT CARE 6 WEEKS & UP

1 TO 3 STAFF RATIO IN A BRIGHT CHEERFUL ATMOSPHERE

Hours: 7:00 am to 6:00 pm

524 Greenhill Avenue • Wawaset Court
Wilmington, Delaware
573-2450

Hidden Treasures - Child Care - 1901 N. DuPont Hwy., New Castle 421-8283



HOLOCAUST MEMORIALS IN DELAWARE



The Garden of the Righteous Gentiles (above), located in front of the Jewish Community Center in Wilmington, is the first monument in the United States to Christians who saved the lives of Jews during the Holocaust in Europe. The Garden's original trees were dedicated in November 1981 by Holocaust survivors residing in Delaware. Individual bronze plaques at the trees bear the names of rescuers, nine of whom saved Jews who later came to live in Delaware; one Christian couple, Ger and Gerald Van Raan, honored in the Garden for their heroic efforts in Holland, also came to reside in Delaware. The Garden was inspired by an "Avenue of the Righteous" at Yad Vashem, the Holocaust museum and resource center in Jerusalem.

At the entrance to the Jewish Community Center, stands the monument to the children who survived the Holocaust (left). The bronze monument, a pair of figures from a larger work of 12 figures call "Kaddish," is the work of an Israeli artist. The statue was purchased by the Halina Wind Preston Holocaust Education Committee of the Jewish Federation of Delaware. An accompanying plaque reads: "In memory of the more than one million Jewish children who perished during the Holocaust, 1933-1945."

In Freedom Plaza in downtown Wilmington stand the Holocaust Memorial of Delaware (top right). The sculpture is comprised of three 15-foot, irregularly-shaped, concrete columns, on which are etched the names of several for the concentration camps. The columns are compressed against three bronze figures: a man, a woman and mother and child, representing the victims of the Holocaust. The massive impersonal forces of the columns suggest man's inhumanity to man and the cold cruel barbaric mentality for the Nazis in an unmoving world. The figure of the mother holding a child over her head may also represent the end of a nightmare and the beginning of a new life. Freedom Plaza is located in the 800 block of French Street (between 8th and 9th Streets) in Wilmington.

The memorial grave marker in the Beth Emeth Memorial Park (bottom right) was dedicated at a memorial service in September 1987.

The Halina Wind Preston Holocaust Resource Center, dedicated in 1987, contains Holocaust-related literature and history books and is housed in the Jewish Community Center.



ISRAEL BONDS

For sale, reinvestment and redemption information call:

658-9337

BOYD'S FLOWERS

'Where artists bring beauty to bloom.'

421-2900
2013 PENNA. AVE.
824 MKT. ST. MALL
2900 CONCORD PK.

"WE SELL THE BEST AND REPAIR THE REST"

HENRY'S BICYCLE SHOP SINCE 1946

MECHANICS ALWAYS ON DUTY

\$5.00 off with this ad Any purchase over \$50.00

2901 Lancaster Ave.
 654-0361 • 571-0517

Mama Sara
 Italian Restaurant

Complete Dinner for 2
\$25 Sunday-Thursday

Appetizer
 Main Course
 Served with Salad or Spaghetti with Tomato Sauce
 Desserts • Coffee

Daily Lunch & Dinner Specials

We can accommodate parties of up to 25 people

Hours: Tuesday-Friday 11-11
 Sat. & Sun 4-11
 Closed Monday

Branmar Plaza
 Marsh & Silverside
 475-6165

Bon Appetit

GOURMET FOOD SHOPPE

GOURMET-TO-GO
 Try Our Freshmade Hot Soups, Baked Brie & Quiches

- Caviar
- French Pates
- Ass'd. Salads • Cheese
- Smoked Products
- Breads • Croissants
- Coffee
- Special Cakes
- Gift Baskets
- CATERING

Complete Eat-In and Take-Out Menu

Talleyville Shopping Center
 3629-D Silverside Road
 Wilmington, DE 19810-5101
 (302) 478-4344

Au PAIR HOMESTAY USA

European live-in child care, up to 45 hrs/wk. Legal non-profit cultural exchange program. Cost approx. \$165/wk.
215-635-3842

We think we're unique!
"Often Imitated Never Duplicated"
 It's not just our complete MAP and GLOBE CENTER, our HUMIDOR of FINE CIGARS & TOBACCOS, GOURMET COFFEES & CANDIES, COMPLETE GREETING CARD DEPARTMENT, or even our array of over 5000 BOOK TITLES ... it's just us ... we love what we do!

THE SMOKE SHOP

CIGARS • GLOBES & MAPS • BOOKS
 GOURMET CANDIES • COFFEES • TEAS • CARLTON CARDS

Amex Money Grams
 Wholesale • Retail • Mail Order

Delaware Ave. at Du Pont St., Wilmington, DE
 (302) 655-2861 1-800-695-6100 (215) 358-1324

HOURS
 6:30 AM TO 10 PM

WOODSET

Custom Residential Play Areas

(302) 658-2266

• Modular/Expandable
 • 4x4 Construction
 • All Pressure Treated Lumber
 • No Age or Weight Limitation
 • Delivery and Assembly Available

Serving Delaware, Pennsylvania & Maryland

WOOD'N FUN P.O. BOX 2775 WILMINGTON, DE 19805

...Because Corporate Climbers have to start somewhere...

Intimate Apparel for All Your Needs

- Strapless Bras & Bustiers - in sizes from 32A to 48DD
- Slips & Petticoats in all lengths
- Designer Lingerie & Loungewear
- Nursing Bras & Gowns
- Boned Girdles & Longline Bras

THE SILHOUETTE SHOP

Independence Mall
 1601 Concord Pike
 Wilmington, DE 19803
 (302) 654-1894

WELCOME TO DELAWARE

BREAST CANCER.

Early detection is your best protection.

If you are a woman over 35, this is the most important ad you'll see this year.

1 out of 10 women will develop breast cancer. But a mammogram can detect it when it's most treatable.

Brandywine Imaging Center provides low dose mammography with state of the art equipment in a comfortable private setting. Our female radiologists and staff will address your breast health questions honestly and respectfully.

Ask your doctor about making a mammogram part of your regular breast care program. For more information, an appointment or tour of our facility, please call our associates Dottie McGuigan or Carolyn Pace at 302 654-5300.

BRANDYWINE



IMAGING

CENTER, L.P.

A Diagnostic Imaging Center for Women

701 Foulk Road • Suite E-1 • Foulk Plaza • Wilmington, DE 19803

York is heating up inside.



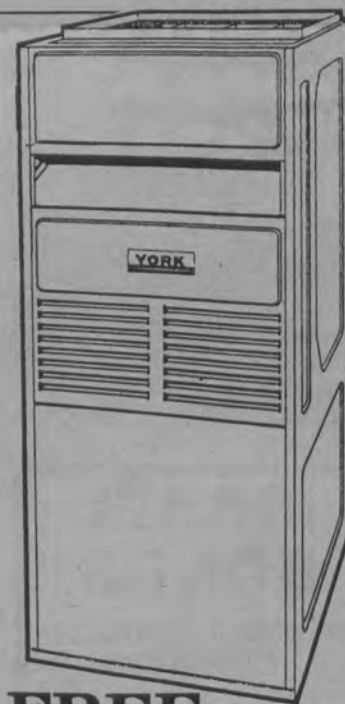
More and more families are heating their homes with York gas furnaces. Why? Because York offers consistent warm comfort at an affordable operating cost. Plus, with its rugged construction and insulation, a York furnace is whisper quiet.

And, as always, you'll get York's famous quality and dependability in every furnace we make.

See us today about heating up your home's inside.

YORK

Heating and Air Conditioning
 York makes you feel good inside.



FREE

York Programmable t-stat with every new York furnace installed before December 31, 1989



478-4265

200A DELAWARE AVE.
 WILMINGTON, DELAWARE
 19803



We're your York Weathermen Dealers... bringing nice days indoors.

LOCAL CHAPTERS OF NATIONAL ORGANIZATIONS

HADASSAH

Wilmington Chapter-
President: Judy Stiebel
6 Devon Court
Wilmington, DE 19810
478-6822

Newark Chapter-
President: Carol Barnett
207 Lindberg Ave.
Wilmington, DE 19804
994-6908

Lower Delaware Chapter-
President: Helen Berman
P.O. Box 15
Dover, DE 19903
678-0550

CHABAD-LUBAVITCH OF DELAWARE-

Director: Rabbi Chuni Vogel
1306 Grinnell Road
Wilmington, DE 19803
478-4400

Chabad House at the
University of Delaware:
630 Lehigh Road, Apt. 0-11
Newark, DE 19711

B'NAI B'RITH LODGE NO. 470-

President: Robert J. Berman
1401 Stoneleigh Road
Wilmington, DE 19810
478-3984

JEWISH WAR VETERANS

Department of Delaware-
Israel Weiner
6 Ridgewood Circle
Wilmington, DE 19809
764-2120

Post No. 525-
Harry Lubin
1106 N. Overhill Court
Wilmington, DE 19810
475-6521

Post No. 747/Nathan Balick-
Samuel Braxman
302 Shipley Road
Wilmington, DE 19809
762-0636

Post No. 767/Arthur Blatman-
Samuel Geller
310 West 38th Street
Wilmington, DE 19802
764-0636

NATIONAL COUNCIL OF JEWISH WOMEN

Wilmington Section President:
Jean Blumenfeld
732 Taunton Road
Wilmington, DE 19803
478-3835

HILLEL-

Counselor: Brant Rosen
64 East Main Street
Newark, DE 19711
453-0479

Chair of Advisory Committee:
Dr. Vivian Klaff
4 Brian Lane
Newark, DE 19711
738-9468

ALPHA EPSILON PI-

Fraternity House
314 Wyoming Ave.
Newark, DE 19711
731-0440

B'NAI B'RITH WOMEN OF DELAWARE-

President: Judy Goldbaum
1621 Windybush Road
Wilmington, DE 19810
475-5191

LABOR ZIONIST ALLIANCE-

Financial Secretary: Thomas Seidel
205 Harvey Road
Claymont, DE 19703
764-3835

WOMEN'S AMERICAN ORT-

President: Sandy McBride
2618 Pin Oak Drive
Wilmington, DE 19810
476-6302



BRANDYWINE COUNTRY CLUB-

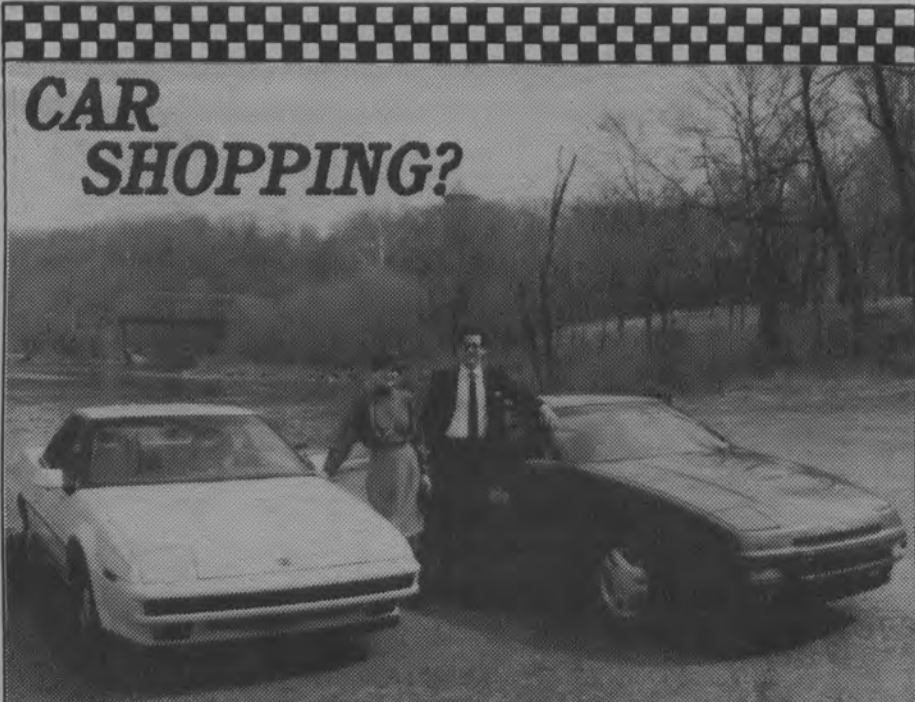
President: Alfred M. Isaacs, Esq.
2822 Shipley Road
Wilmington, DE 19810
478-2100

JEWISH HISTORICAL SOCIETY-

President: Morris Levenberg
306 West 37th Street
Wilmington, DE 19802
762-1323

MONTEFIORE MUTUAL BENEFIT SOCIETY-

President: Leon Chambers
1 Windsor Road
Wilmington, DE 19809
762-0168



CAR SHOPPING?

BUY FROM FRIENDS IN THE BUSINESS.

Meet Eve Slap of Matt Slap Subaru in Newark and Dave Slap of Matt Slap Ford in Kennett Square. When you are looking for your next car, you'll find great deals and friendly service at both convenient locations.

Matt Slap

FORD

718 E. Baltimore Pike
Kennett Square, PA
(Just south of Longwood Gardens on the bypass)

444-6500

No tax to Delaware residents

SUBARU

255 E. Cleveland Avenue
Newark, DE
(On the auto row in Newark)

453-9900

Bagels & Donuts inc.

ALL PRODUCTS ARE FRESH-BAKED ON PREMISES EVERY MORNING • 7 DAYS A WEEK

Under The Supervision Of Vasdha Kashrut For Baked Take-Out Goods Only!



FEATURING:

- Hearth Baked Jewish Rye
- Pumpernickel Bread
- Challa
- Nutritious Whole Wheat & Old-Fashioned White Bread
- Delicious Cinnamon Buns
- NEW - Oat Bran Breads & Bagels

17 VARIETIES OF NEW YORK STYLE BAGELS

"Best Bagels"

DELAWARE TODAY MAGAZINE
1985, 1986, 1987, 1988 & 1989

Mini-Bagels - Perfect For Weight Watchers, Kids, Snacks, Parties Or Anytime
Try Our Homemade Soups

TWO LOCATIONS TO SERVE YOU:

SILVERSIDE & MARSH RD.
478-9016

1901 PENNA. AVE.
652-7960

Leave US Holding The Bag!
ERRANDS EXPRESS
 For Anything You Can't Do,
 Don't Want to do,
 ...or don't have time to do -
 Bonded, reasonable rates...
CALL (302) 429-8820

*Welcome
 to
 Delaware!*

BALLOON
 DECORATIONS BY...

**INFLATION
 CREATIONS**
 "DELAWARE'S CELEBRATION
 SPECIALIST"
 WEDDINGS • BAR/BAT MITVAHS
 FORMAL & INFORMAL PARTIES
 GRAND OPENINGS
 LYNN TARNOW
 (302) 239-1501

Lotsa Pasta Restaurant & Lounge **475-0840**
SPECIALTIES
 Broccoli & Cheese Cannelloni • Stuffed Flounder
 Alaskan King Crab Legs • Rigatoni Caruso
 Seafood Lasagne • Buckets of Pasta
DAILY LUNCH SPECIALS
HOURS:
 Mon.-Thurs 11:00-11:00
 Fri.-Sat. 11:00-1:00
 Sun. 2:00-10:00
*Reservations Requested
 For Parties of 5 Or More*
 2314-16 Carpenter Road

GILPIN
 REALTORS
**Charen Schnetter,
 R.A.**
 LICENSED IN DE & PA
 OFFICE: (302) 575-0880
 HOME: (302) 478-6911
**Fundraising Program Available*

**New
 Castle
 Farmers
 Market**
 Come out for a day of family
 fun and shopping bargains
 DON'T MISS DELAWARE'S
 BIGGEST & BEST FLEA MARKET
 FRI. & SAT. 10 A.M.-10 P.M.
 SUNDAY 10 A.M.-6 P.M.
 RT. 13 (Across From
 Wilmington Airport)
 New Castle, DE 328-4101



**I never met a man
 I didn't like.
 Unless he was
 wasteful.**

If we take a few steps to conserve our precious natural resources today, they'll be here tomorrow. No one knows this better than Delmarva Power. We're committed to producing and conserving energy in ways which not only protect our environment, but enhance it.
 By raising rockfish at our Vienna Power Plant brooding pond, we've helped replenish our dwindling striped bass population. So far, we've released over 75,000 fingerlings back into the Chesapeake Bay.
 We reduce solid waste by recycling fly ash, instead of disposing of it in landfills. We've used the fly ash to help build highways, and an artificial reef in the Delaware Bay, which has improved marine life.
 Delmarva Power also saves millions of gallons of drinking water a year by using filtered river

water for power plant operations, instead of drawing from our drinking supply.
 You can help, too. When you save water, you also save money on your energy, water and sewer bills. So take showers instead of baths. You'll use only half the hot water. And install flow restrictors on your shower heads.
 Recycle cans, paper, glass, even motor oil. Just pour the used oil into an airtight container and bring it to a service station that accepts used oil. The oil will be picked up by a collector and recycled into clean fuel.
 For more conservation tips, write to your Delmarva Power office. And help us protect today's energy supply as we research tomorrow's energy sources. You'll like how it makes you feel.

**Delmarva
 Power**
 Energy at your service, today and tomorrow.

**Mrs. Spencer's
 Housekeepers**
 COMPANIONS, HOUSEKEEPERS,
 NANNY LIVE IN OR OUT
Professional-Prompt-Pleasant
656-7222
TEAM CLEANING
 TRAINED BONDED STAFF -
 REFERENCES
656-9984


FAIRFAX VALET
 PROFESSIONAL
 CLEANERS & LAUNDERS
**Suede & Leather
 Repairs & Alterations**
 Fairfax Shopping Center
 Rt. 202 (Concord Pike)
652-6725

**creative
 cooking**
 branmar plaza
475-0390
 christiana
 mall
366-7484
 powder mill
 square
654-9012

Bob Weiner
Jewish Folk Singer
 With or Without Guitar
 • Israeli • Yiddish
 • Chassidic • American
 • Folk Music
479-5088 • 658-8700

PUBLISHER'S NOTE

*A special effort
has been made by the
many advertisers in this issue
to welcome new members of the
Delaware Jewish Community.
They deserve your support!*

**The
Quality
Of
Light**



**MATTES
LIGHTING SERVICE**

Signs
Interior & Exterior Lights
Parking Lot Lights

656-9933

**BOBEH
MYSEH***

Most people have heard that you have to wait years to get into the Kutz Home. In fact, there's little or no wait for admission.

So before you believe another Bobeh Myseh, call us and we'll be glad to tell you more about ourselves.

*Old wives' tale.



THE MILTON & HATTIE KUTZ HOME, INC.

704 River Road • Wilmington, Delaware • (302) 764-7000



For Over 50 Years, We've Been Welcoming Newcomers

The numbers still stagger the imagination:

70,000 Jews who survived Hitler, brought to the land of Israel in the space of just four months.

45,000 Jews from Yemen, almost the entire Jewish population, airlifted through Operation Magic Carpet in the 1950's.

120,000 from Iraq. Another 70,000 from Morocco.

Thousands from Ethiopia earlier this decade were welcomed to Israel where they could live as free Jews.

Within this past year Glasnot has made possible a modern exodus of the third largest world Jewish community.

Whether a newcomer to a new

country fleeing religious persecution, or a newcomer to the Delaware Jewish community, for over 50 years the Jewish Federation of Delaware has been a part of the welcoming.

Through a contribution to the Jewish Federation of Delaware annual campaign, you can connect to an entire Global Jewish Family, whether it be in Delaware, Israel, or the entire world. Your contribution enables a Jewish welcoming as well as a Jewish community rich with cultural, educational, social, and humanitarian services.

We are eager to tell you about our community and help you settle in. Please call us at 478-6200 if we can be of any assistance.



Jewish Federation of Delaware
101 Garden of Eden Road
Wilmington, Delaware 19803
(302) 478-6200