

THE
JEWISH
VOICE



Guide



to



Jewish

life in



Delaware



IF YOU HAVE INSURANCE QUESTIONS PERTAINING TO YOUR BUSINESS OPERATIONS, YOU NEED TO TALK TO AN EXPERT.

CALL THE WILSON INSURANCE HOTLINE: (302) 762-9292



HARRY S. WILSON, INC. COMMERCIAL INSURANCE DE (302) 762-9292

Friday 10 a.m.-10 p.m. • Saturday 10 a.m.-9 p.m. An authentic farmer's market in the heart of Delaware County.



1362 Naamans Creek Rd., Booth's Corner, PA

Come and enjoy a unique country shopping experience at Booths Corner Farmers Market and Auction. From mouth-watering delicacies to Amish quilts, needlework, handicrafts and folk art, Booths Corner offers something for every shopper.



Booths Corner Farmers Market and Auction is located just north of the Delaware line at Foulk and Naamans Creek Roads (Routes 261 and 491).



Newcomers to Delaware enjoy the Newcomer's picnic facilitated through the Jewish Federation of Delaware

Whether you're from Russia or King of Prussia, the Middle East or the West Coast...

Welcome to Delaware! The Jewish Federation of Delaware is proud to offer these services to you:



Newly arrived from the former Soviet Union, this family receives resettlement assistance from the Jewish Family Services, a beneficiary of the Jewish Federation of Delaware

NEWCOMERS NETWORK IN DELAWARE

An official committee to welcome Jewish newcomers to Delaware has been formed by Womens Division, Jewish Federation of Delaware, composed of representatives of all Jewish agencies, organizations and synagogues of Delaware.

The "Jewish Community Newcomers Network" (JCNN) believe that for the health of the community and for our future ability to attract new people to vibrant and active Jewish community life in Delaware, it is important that we work together to establish many gateways for Jews to enter into Delaware Jewish life.

The JCNN has formulated their subcommittees, with chairs, to discuss in more detail specifics involved in the welcoming of Jewish Newcomers. These subcommittees are: Brochure/Pamphlet subcommittee, Publicity subcommittee, Newcomers Event subcommittee and a "Welcome Wagon" (greeters) subcommittee.

Most recently, the JCNN hosted a "Welcome to Delaware" BBQ at the JCC. More than 85 newcomers and community members attended. Many community representatives were on hand to extend a warm welcome to the Newcomers with a wish that they become part of our Delaware "family." There was plenty of good food, good conversation and new acquaintances made, along with an overwhelmingly enthusiastic response from both the Delaware Jewish community and the newcomers.

Development of a cadre of greeters from the community to welcome Newcomers has been a priority of the JCNN. The official greeter also presents the newcomer with a "Welcome Bag." Just a few of the items



JEWISH LIFE

IN DELAWARE

in the bag include — Challahs (donated by Bagels and Donuts), Shabbat candles, Jewish calendars (donated by Schoenbergs Memorial Chapel), Mezuzahs, grape juice, a Jewish cookbook and an issue of the Newcomer's Guide to Delaware.

The JCNN continues to work on publicity for community awareness, a newly organized brochure/pamphlet specific to Jewish life in Delaware, as well as future additional social gatherings for newcomers.

Everyone in the community is urged to join the welcome effort of the JCNN by calling the Jewish Newcomers number — 477-1420 — to submit names. A newcomer himself or herself may also call if he/she wishes to be greeted by our community.

Anyone wishing to be actively involved in the JCNN, or for additional information, please call Connie Sugarman, Acting Chair, at 529-1177 or Lelaine Nemser at Jewish Federation of Delaware, 478-6200.

Shalom!

Welcome to the Delaware Jewish community.

We're opinionated. We're diverse. And we're colorful. We're traditional, we're conservative, we're reform. We're assimilated. We're young, we're old. We're middle aged (even though this age category doesn't often admit it).

The Jewish Voice annually publishes this guide to our organizations, agencies, synagogues and schools in the area.

Our advertisers deserve your patronage. They are in here because they support our community. Let them know you saw their ads in our pages when you visit their places of business.

For more information about the Jewish community of Delaware and the outlying areas, call Jewish Federation of Delaware, 478-6200.

Rebecca Falkowski, Editor



KRESTON LIQUOR MART

DELAWARE'S LARGEST AND MOST COMPLETE LIQUOR STORE

"SEEING IS BELIEVING"

You Must See Kreston Liquor Mart To Believe The Vast Selection And Low Prices

Large Selection of Kosher Wines



904 Concord Avenue
(Concord Avenue & Broom Street)
Phone: 652-3792



Has your sign been sacked?



Then you are lacking a very important image for success. Having a sign that is in ruin or misplaced could cost you a lot of business over the long term.

At Tupp Signs we have built and designed signs that helped businesses like yours to prosper. And we've done that for over 58 years.

TUPP SIGNS

Call 322-1600

457 E. New Churchman's Rd.
New Castle, DE 19720

FAIRFAX VALET

"We Dry Cleanest"
Offering *more* services than any other dry cleaner in Delaware.
Norman Balick - owner since 1956.
State-of-the-art equipment.
Specializing in customer service.
Fairfax Shopping Center
652-6725

Dr. Michele B. Medwin
Family Optometry

We give you the time and attention you need to solve your vision problems.

- CONTACT LENSES
- EYE EXAMINATIONS
- FASHION EYEWEAR

475-8897

New Location:
1809 Marsh Rd.,
Wilmington, DE
Hours by Appointment
Day, Evening & Sat

ST FRANCIS HOSPITAL

98%
Recommend us

97%
Use us again

Our free physician referral service has achieved an astounding level of patient satisfaction, according to caller surveys. More people than ever are calling us to find the doctor who's best for them. Find out why we're the best place to look.

Call us at our new number

HEALTH HOOK UP
652-LIFE

Physician Referral Service and Information Service
Weekdays 8am-4:30pm



B BERGER BROS. INC

Office experts since 1919

3rd & Market Streets
Wilmington, Delaware
(302) 655-7166

Discrene



INTRODUCING
A BREAST FORM
WORN ON
YOUR BODY, SO
IT'S NOT ON
YOUR MIND.

THE SILHOUETTE SHOP

INTIMATE APPAREL
FOUNDATIONS
MASTECTOMY NEEDS

THE DEPOT SHOPPES
LANCASTER AVENUE
PAOLI, PA.
215-644-3242

INDEPENDENCE MALL
1601 CONCORD PIKE
WILMINGTON, DE.
302-654-1894

HISTORY

First permanent Jewish institution in 1879

Although there were Jews in Delaware from the seventeenth century days of Dutch settlement, Judaism did not flourish in very early Delaware, and by 1840, it appears to have been nonexistent. Not until 1879, when the Moses Montefiore Mutual Aid Society was organized, did Delaware have a permanent

some Jewish retailers, peddlers, cannery, distillers or hotelkeepers. The first Jewish farmers arrived in Viola in 1897 and 1900. With support from the Jewish Agriculture Society, 25 Jewish families settled on Delaware farms between 1912 and 1929. Jewish immigrants also entered farm-related businesses—

1929, there were more than 20 Jewish organizations, often working at cross purposes. Attempts to unite the community were unsuccessful until 1935 when the Jewish Federation was established as a representative body of Wilmington's Jewry. In the following decades, the Federation's role was expanded statewide.

A few Jews attended the University of Delaware before the turn of the century, but Jews do not appear to have settled in Newark until early in this century. The Newark Jewish community, today's Temple Beth El, was formed in 1954.

Throughout this century, the majority of Jews continued to live in Wilmington. Between 1929 and 1945 the Wilmington Jewish community increased 60 percent, to 6,156 people. Only an estimated 80 Jewish families lived in Lower Delaware in 1945. By 1974, the Jewish population of Delaware was 9000 with 96 percent in Northern Delaware. In the last decade, there has not been a significant increase in the Jewish population, which is estimated at 9300 today.

In this brief introduction, it is not possible to name all the people who have distinguished themselves in the 100 years of active Jewish life in Delaware. Suffice it to say that Jews have held high positions and made significant contributions in numerous fields, including law, business, government, medicine, farming, and journalism.

JEWISH LIFE



IN DELAWARE

Jewish institution. Therefore, Delaware became the last of the original thirteen states to have an organized Jewish community and worship services for the High Holidays. In 1879, Wilmington had a Jewish population of some 25 families, most engaged in retail businesses. A small number of Jewish retailers lived in Dover, Smyrna and Milford.

Between 1880 and 1910, the Jewish population of Wilmington grew tremendously as East European immigrants found their way here. In just 30 years, the Jewish population of Wilmington expanded to more than 400 families.

The influx of struggling immigrants, primarily merchants and peddlers, spurred the formation of many service organizations. Between 1899 and 1902, three of today's primary institutions were founded to offer assistance to the new arrivals. The Hebrew Charity Association, today's Jewish Family Service, was founded in 1899; The Young Men's Hebrew Association, today's JCC, in 1901; and the Bichor Cholem, today's Kutz Home, in 1902.

The immigrants also established several synagogues to meet their differing religious expectations. Three of the early synagogues survived: Adas Kodesch, founded in 1885; Chesed Shel Emeth, founded in 1901, merged with Adas Kodesch in 1957; and Beth Emeth, founded in 1906.

Although Wilmington had the largest concentration of Jews in the state, Jews continued to live in Kent and Sussex Counties. By the early twentieth century, Dover, Lewes, Smyrna, Felton, Laurel, Georgetown, Millsboro, and Seaford had

livestock, poultry, and farm supplies.

No Jewish organization existed downstate until 1916, when the short-lived Jewish Farmers Association was established. Religious services were held informally, in in-

JEWISH LIFE



IN DELAWARE

dividual homes, until 1939 when the Jewish Congregation of Lower Delaware, today's Congregation Beth Shalom, was incorporated.

During the first three decades of the twentieth century, the Jewish community of Wilmington grew rapidly, and by 1929, the population reached 3935.

But the community became increasingly fragmented. A fourth synagogue, Congregation Beth Shalom, was established in 1922. By

The Jewish Historical Society of Delaware continues to collect and preserve information on Delaware Jews. The archives of the JHSD are available to all who wish to know more about the rich Jewish heritage in Delaware.

(This introduction is based on material at the Jewish Historical Society of Delaware and on as yet unpublished work by Charles Salkin and Toni Young.)

THE JEWISH FEDERATION OF DELAWARE

101 Garden of Eden Road, Wilmington, Delaware, 19803
478-6200

Acting Executive Director Seth M. Bloom
President, Steven A. Dombchik

The Jewish Federation of Delaware is many things to many people. To some, it's the organization that calls every year seeking monetary support. To others, it's the organization which has enabled them to express their commitment to the Jewish people through a variety of volunteer opportunities.

And for all of us, it's the organization that supports the many services and programs which make our community whole and contribute to the continuity of the Jewish people.

Board of Directors

The final decision making body for JFD activities. All Board members are volunteers with 36 members elected, 15 past presidents, along with representatives of Delaware's agencies and synagogues.

Community Campaign

The Jewish Community of Delaware Endowment Fund offers donors the opportunity to endow a service or institution of special interest to them. Such gifts provide a lasting legacy for the community

July and August) is overseen by an Editorial Committee.

Jewish Women's Coalition of Delaware

A committee of Presidents and representatives of all the Jewish womens organizations in Delaware who meet to discuss issues relating to their groups and to present co-sponsored community programs.

Maimonides Society

Established in the spring of 1992, the goals are to build camaraderie among Delaware's Jewish physicians.

Newark Connection

The Womens Division of JFD, Beth El Sisterhood in Newark and Newark Chapter of Hadassah cooperate to encourage and develop interpersonal and inter-organizational relationships between Wilmington and Newark primarily through co-sponsored events held in Newark.

Newcomers Committee

The Newcomers Committee represents all community organizations pooling their resources to produce a warm welcome to newcomers to Delaware through Newcomers events, Welcome Baskets and personal efforts of JFD and organization members.

Priorities Committee

A committee of volunteers assessing community needs and priorities.

Special Campaigns

Separate from the Community Campaign, donations are sought for out-of-the-ordinary needs that may arise (e.g. the Operation Exodus

YLC is designed to connect young adults to the organized Jewish community and prepare for the next generation of communal leadership.



In 1991, the Board of Directors of the Jewish Federation of Delaware, adopted a mission, vision, and goals statement (see outline) after a year long process which helped define the role of the JFD in the community.

Volunteers enable the JFD to fulfill its goals. Although the following "snapshots" of the JFD structure are designed to introduce to you the JFD, newcomers as well as those that may be newly interested, are encouraged to call the JFD for a complete introduction.

Acculturation Committee

Sponsors American and Jewish educational programs and outreach to former Soviet Jews now living in Delaware.

and record the names of the contributors in perpetuity.

Halina Wind Preston Holocaust Education Committee

A committee of volunteers promoting education about the Holocaust through various programs such as a Teachers Seminar and an annual Holocaust through various programs such as a Teachers Seminar and an annual Yom HaShoah service.

Israel Task Force

Promoting awareness and understanding of the Jewish Homeland through a series of education and outreach efforts.



Allocations Task Forces

Through an extensive review process, volunteers recommend to the Board how funds raised through the Community Campaign should be disbursed to a host of local, national, and international agencies and programs (see 1992 allocations summary on this page).

Jewish Community Relations Committee

The JCRC interfaces with the Jewish and general community regarding a wide range of social issues such as anti-Semitism.

The Jewish Voice

Delaware's only Jewish newspaper, printed twice monthly (once in

Jewish Federation of Delaware

Mission

Mobilize the Jewish Community to address issues, meets needs and build an agenda for the future.

Vision

Bring Jewish people together into a community coalition, grounded in Jewish teachings and heritage, to strengthen the State of Israel, the global Jewish family and local organizations in order to further the survival of the Jewish people.

Goals

- Foster identification with our Jewish teachings and heritage to inspire an informed and involved community.
- Build an agenda for the future with clearly defined priorities.
- Take responsibility for raising funds which will meet mutually agreed upon goals.
- Allocate and manage the community's resources based upon the community agenda.
- Provide a structure for the Jewish community to interact with the non-Jewish community.
- Develop Jewish leadership.

campaign to help support the resettlement of Soviet Jews in Israel).
Young Leadership Cabinet
With five active committees, the

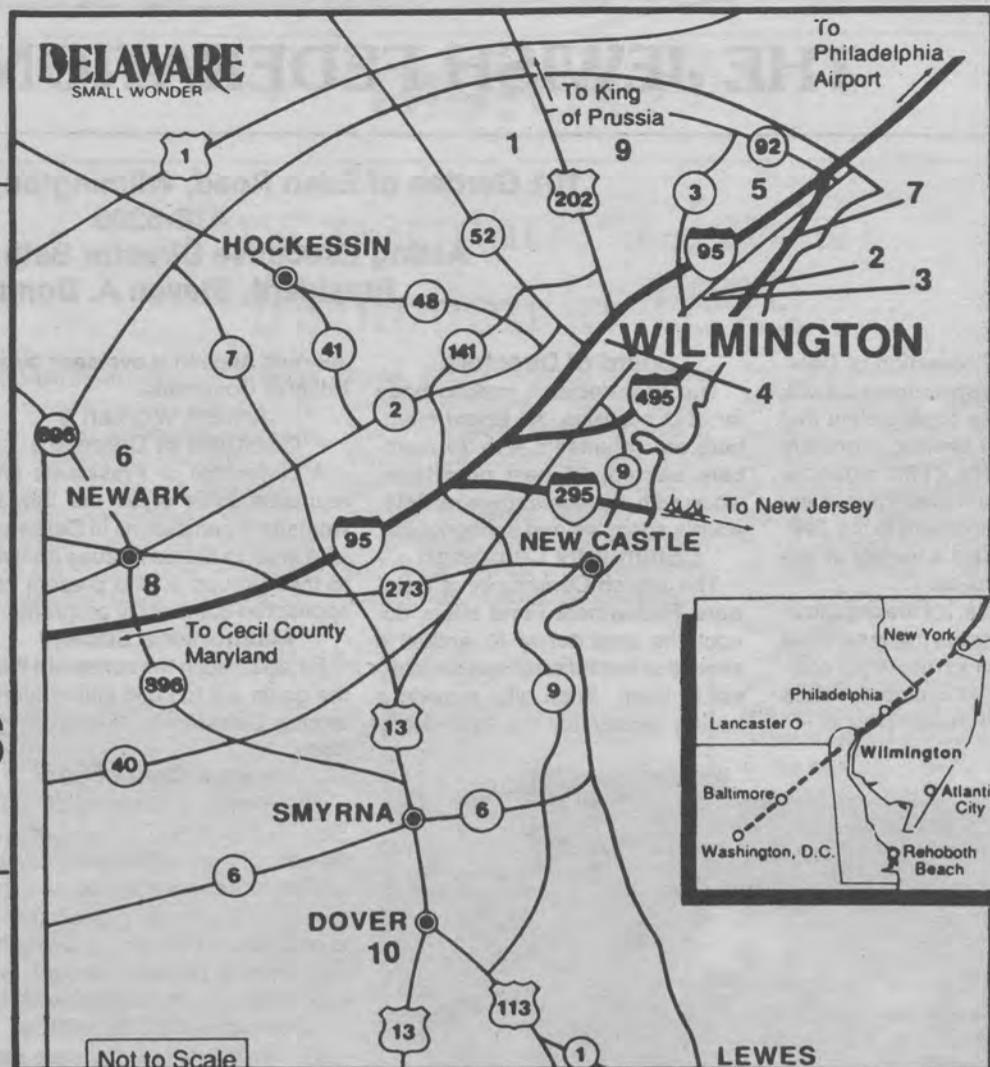
In addition to these committees and activities, there are various administrative committees such as audit, finance, and personnel.

Jewish Federation of Delaware Allocations Overview

	1992 Board Approved Allocation	Guaranteed* Allocation
Albert Einstein Academy	44310.	33233
Council of Jew. Fed.	23000.	17250.
New American Costs	2079.	1559.
Gratz Hebrew High School	30464.	22848.
Hebrew Immigrant Aid Society	10000.	7500.
New American Costs	310.	233.
Hillel	25180.	18885.
Jewish Community Center	113500.	85125.
New American Costs	23440.	17580.
Jewish Community Center Assn.	3000	2250.
Jewish Family Service	29000.	21750.
New American Costs	21412.	16059.
Jewish Federation of DE	344611.	258458.
Assistance	1000.	750.
Endowment	8976.	6732.
JCRC	7200.	5400.
Jewish Voice	21756.	16317.
Judaic Workshop	650.	488.
Ki Tov	1400.	1050.
Local Resett. (non-agency)	17299.	12974.
Milton & Hattie Kutz Home	75000.	56250.
National Jew. Comm. Rel. Adv.	3500.	2125.
Newark Community	5000.	3750.
Project Renewal - Jesse Cohen	-0-	
Southern Delaware Community	5000.	3750.
New American Costs	-0-	
Capital Maintenance	40000.	30000.
United Jewish Appeal	455000.	34125.
GRAND TOTAL	1312087.	984065.

*Guaranteed allocations reflect the percentage of actual campaign achievement relative to projected campaign achievement when the JFD Board approved allocations.

Locating Delaware's Jewish Organizations



Map Key

- | | | | |
|--|---|--|--|
| 1 Jewish Federation of Delaware
The Jewish Voice
Jewish Community Center
JCC Preschool
Jewish Family Service | Albert Einstein Academy
Gratz Hebrew High School
Jewish Family Campus | 4 Beth Shalom Congregation
5 Machzikey Hadas Congregation
B'nai B'rith House | 8 Hillel
Chabad House |
| 2 Adas Kodesch Shel Emeth Congregation | 3 Beth Emeth Congregation | 6 Temple Beth El
7 Kutz Home | 9 Brandywine Country Club
10 Congregation Beth Shalom |

THE HOUSE OF

榮 WING WAH 華

CHINESE FOOD

A gracious reception and an impeccably clean, attractive dining room awaits you at WING WAH. House specialties include Cantonese Roast Duck and House Delight Shrimp, all very reasonably priced. We serve imported Chinese wine, Chinese beer, and Exotic cocktails. A new separate room is available for private party or use our friendly take out service at both locations.



Relax in our Cocktail Lounge before or after dinner!

— TWO LOCATIONS —

WILMINGTON
TALLEYVILLE
3901
CONCORD PIKE
(302) 478-9500

**Major
Credit
Cards
Accepted**

NEWARK
CHESTNUT
HILL PLAZA
(RT. 4)
(302) 738-7681

CONGREGATIONS



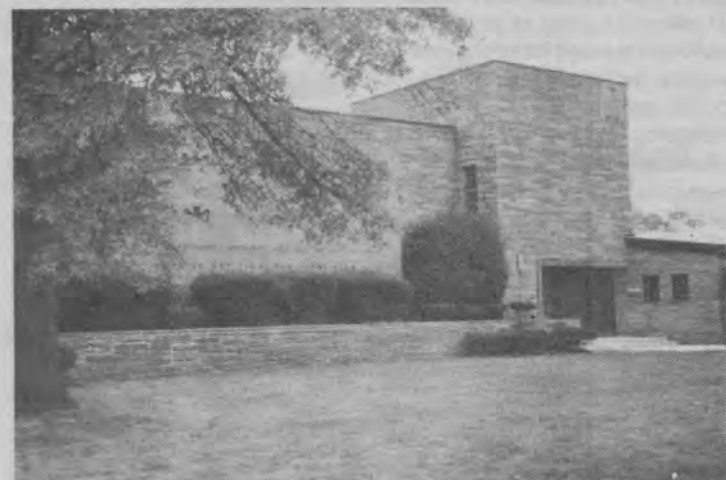
CONGREGATION BETH SHALOM
(Conservative)
1801 Baynard Boulevard
Wilmington, DE 19802
654-4462
☆☆☆
Rabbi: Herbert Yoskowitz
Cantor: Norman Swerling
President: Jeffrey Drowos

BETH SHOLOM CONGREGATION
(Conservative)
Queen & Clara Streets
Dover, DE 19901
734-5578
☆☆☆
Rabbi: Moshe Goldblum
President: Robert A. Crystal



TEMPLE BETH EL
(Reconstructionist)
301 Possum Park Road
Newark, DE 19711
366-8330
☆☆☆
Rabbi: David Kaplan
President: Robert Gelman

ADAS KODESCH SHEL EMETH
(Traditional)
Washington Boulevard & Torah Way
Wilmington, DE 19802
762-2705
☆☆☆
Rabbi: At the time of printing the new
rabbi's name had not yet been released.
Rabbi Emeritus: Leonard B. Gewirtz
President: Alan P. Goldberg



CONGREGATION BETH EMETH
(Reform)
300 West Lea Boulevard
Wilmington, DE 19802
764-2393
☆☆☆
Rabbi: Peter Grumbacher
Assistant Rabbi: Sarah Messinger
Rabbi Emeritus: Herbert E. Drooz
President: Jay Stellenberg

Talk to a professional
about financing or
re-financing your home.

DIANE E. BERGER
Assistant Vice President



MERCANTILE MORTGAGE CORPORATION

Office: (302) 479-8350 Home: (302) 764-8384

Competent and enthusiastic service
to meet your personal financial needs.

Are You At Risk?

Long-Term Care Insurance
Life Insurance
Buy-Sell
Second-To-Die (Estate Planning--No Fee)
Disability Income

For more information, call
Judith B. Gilbert or Michael H. Latham
at (302) 798-3771.

TRANSAMERICA LIFE COMPANIES TRANSAMERICA OCCIDENTAL LIFE
Bellevue Park Corporate Center, Suite 190
Wilmington, Delaware 19809-3704

My Sister's Shoes



SAVE 20% With This Ad*
1733 Marsh Road Wilmington, DE 19810
478-7458

* 15% off with Visa, MC, AMEX, WSFS. Does not apply to sale merchandise. Shoes only.

Leonora Gershberg's

AFFORDABLE KOSHER CATERING

"A Menu For Every Affair In All Price Ranges"

FROM A TRAY TO FULL COURSE DINNER
45 Years of Continuous Service
To the Kosher Community
Free Estimates

home • synagogue • hotel • country club

SERVING PA, NJ, DEL. • (215) 342-9845

Our Usual 15% Discount
IS NOW 20%

on raised printing
Now through February 1993
**WEDDING INVITATIONS
or ANNOUNCEMENTS**

ALBUMS AVAILABLE FOR LOAN
See us for your Announcements • Parties
• Showers • Engagements • Graduations
• Bar & Bas Mitzvahs
Napkins, matches, other accessories



C.L. STORY PRINTING CO.
1301 French St., Wilmington, Delaware

Ben F. and Rose S. Cohen & Son Barry
FREE PARKING adjacent to Building on French St. (302) 655-4455
2 blocks from the Hercules Building, 5 blocks from City, County & State Bldg.
NO APPOINTMENT NECESSARY 9 a.m.-4 p.m. MON. thru FRI.

Authorized Ticket Agency
For The Delaware Valley


B & B
tickettown

322 NINTH ST. PLAZA • WILMINGTON, DE 19801
TELEPHONE: (302) 656-9797 OR (215) 459-3283
TERRY SKLAR



PROFESSIONAL HOME HEALTH CARE

201 Possum Park Road Newark, DE 19711 302-738-9756
850 South State Street Dover, DE 19901 302-678-8015
301-398-4733



Marzouk's Catering
Approved by Va'ad HaKashrut

Nelly Marzouk (302) 475-8852
Bar/Bat Mitzvas Weddings Middle Eastern Cuisine



Hermans Quality Meat Shoppe, Inc.
64 EAST CLEVELAND AVENUE NEWARK, DE 19711
(302) 731-5344
HOME OF CUSTOM CUT MEATS

Claire's

day into evening
specializing in
mother of the bride

sizes 2 20

1312 philadelphia pike
wilmington, de 19809
302 798 1312

JEWISH COMMUNITY CENTER

101 Garden of Eden Road, Wilmington, Delaware 19803
(302) 478-5660

President - Mark J. Caplan
Executive Director - David H. Sorkin

The Jewish Community Center (JCC), is a non-profit membership organization which provides the Delaware Jewish community with diverse and extensive services. The Center provides its members and the entire community with a central place in which, individuals, families, groups or organizations can best express their interests and have their social, educational, cultural, fitness and recreational needs met.

The Center offers Jewish educational programs, (including a nationally accredited pre-school and day care program), holiday celebrations, cultural and arts programming. In addition members can enjoy a newly-renovated, state-of-the-art Fitness Center as well as an indoor swimming pool, gymnasium and racquetball facilities. Outdoors, a thirty acre Family Campus adjacent to the JCC building, offers a wide array of services outlined below.

The Jewish Community Center is partly funded by the Jewish Federation of Delaware, the United Way of Delaware and is affiliated with JCCA (Jewish Community Centers Association of America).

In addition, the Jewish Community Center offers its facilities to an ever-enlarging number of Jewish organizations who use its building for their programs and services.

- Jewish Family Campus**
Facilities and Programs include:
- 6,000 square foot outdoor swimming pool and toddler pool
 - Changing facilities
 - Four tennis courts
 - Outdoor sports fields (basketball, softball, soccer and football)
 - Large picnic areas with tables and cooking facilities
 - A scenic nature park, adjacent to the Brandywine Creek State Park
 - A crafts and nature center for enjoyable educational activities
 - An outdoor amphitheatre with concerts and productions of community interest
 - Sand volleyball pit
 - A variety of family and children's activities
 - Facility rentals are available for company picnics or family get-togethers

- Sports, Aquatics and Fitness Services**
Facilities and Programs include:
- 25 yard indoor swimming pool
 - Adapted aquatic facility (handicapped accessible)
 - New state-of-the-art 3,000 square foot fitness center with 23 cardiovascular aerobic stations
 - Aerobics studio with stereo sound
 - Newly refurbished locker room facilities
 - Full court gymnasium
 - Three racquetball courts
 - Steam and sauna rooms
 - Stainless steel whirlpool
 - Individualized exercise program development and instruction
 - Personalized fitness testing and one-on-one training
 - Babysitting service available
 - Fitness and aquatic classes for all ages

- Free aerobic classes for members
- Team sports and friendship

Senior Center

The following are just a few of the activities offered at the Senior Center:

- Congenial, nutritious, Kosher, balanced lunches served Monday through Friday
- Outreach services
- Family life discussions
- Current event seminars
- Candlelight dinner programs
- Senior center choral group
- Jewish holiday celebrations and special events
- Painting class
- Swimming and physical fitness classes
- Wellness educational series
- Israel-oriented programs
- Trips
- Birthday parties
- Card games
- Monthly news bulletin
- Transportation to and from the JCC on weekdays

Adult Services

- Classes and Programs include:
- Jewish education programs
 - Jewish Book Month Celebration
 - Lectures
 - Adult Institute of Jewish Studies
 - Jewish Great Books Discussion Group
 - Day trips to theatres and museums
 - Jewish holiday programs
 - Art gallery exhibitions
 - A variety of classes and adult club groups
 - Jewish cultural arts programs
 - Special groups

- SAT college prep program
- Social and recreational programs

Children's Services

- After school childcare/enrichment for kindergarten - 6th grade children (Kidsplace) Monday-Friday, until 5:45 p.m.
- Transportation from area schools to the JCC and Hebrew Schools
- "School's out days" (School vacation programs)
- Family holiday and cultural programs
- Cultural and holiday programs
- Clubs and groups and enrichment classes
- Birthday party celebrations
- Cub Scouts and Boy Scouts
- After school childcare for children with special needs

The Children's Center (Early Childhood Services)

- Nationally accredited pre-school programs
- Nationally accredited full-service day care programs
- Toddler's play
- Kindergarten enrichment
- Drop-in babysitting service
- Lunch bunch and swim programs
- Music and ballet classes
- Parenting education seminars
- Family education center

JCC Day Camp

- Day camp theme weeks
- Early morning and late afternoon extended hours
- Transportation to and from camp on a daily basis
- Cookouts, theme days and overnights
- Traveling teen camp
- Sports (soccer, hockey, basketball, baseball, racquetball, tennis, archery)



Young Jewish Adults of Delaware

The Young Jewish Adults of Delaware (YJAD) is designed for Jewish singles in their twenties and thirties. YJAD offers a variety of programs and activities created for young Jewish singles, including:

- Cocktail parties
- Discussion groups
- Cultural/educational programs
- Weekly volleyball games
- Recreational sport programs
- Monthly Shabbat services
- Jewish holiday programs

YJAD also provides an excellent setting for singles to develop and hone leadership skills.

Teen Services

- Programs and Activities include:
- B'nai B'rith Youth Organizations
 - Teen and CIT camping programs

- Arts and crafts
- A wide variety of two week Specialty Camps
- Recreational and instructional swim programs
- Multi-media arts activities (theatre, creative dramatics)
- Ropes course
- Nature
- Music
- Exclusive access to the Brandywine Creek State Park

Special Services

- Stroke support group
- Programs for special needs populations
- Camp group for special needs children
- Immunization program for older adults
- Health education seminars, lectures and classes

EDUCATION

JCC Early Childhood

Early Childhood and Children's Services
101 Garden of Eden Road, Wilmington, Delaware 19803
(302) 478-5660

The Children's Center

Director: Jane Hormadaly
Program Coordinator: Susan Kimm Gentry

Early Childhood Services Committee Chairperson: Lena Elzufon
PTA/Parent Volunteer Corps: Elaine Mendelsohn, Robin Rosenfeld, Ruth Rosenberg

The Children's Center is accredited by the National Academy of Early Childhood Programs and is licensed as a child care center by the State of Delaware.

Especially For Newcomers

Parenting Playgroup: Guided by a facilitator, parents and their young children (birth to 3 years), meet weekly to discuss parenting issues and make new friends.

Parent/Toddler Programs

A variety of classes and activities designed to engage parents and children (ages 12 months to 2 years) are offered at the Children's Center.

Pre-School

(9:00 a.m. - 12:00 noon)

Pre-school programs provide

young children with rich experiences designed to enhance their social, emotional and intellectual development and supports the development of positive self-image, as well as a positive Jewish identity. Age-appropriate activities are provided to stimulate language development, math concepts and awareness of the world around them. Daily indoor and outdoor play and morning snack are provided.

Children's Day Out (Walking children ages 1-2)

This first experience away from home meets on Friday mornings. With careful guidance from our pre-school staff, children enjoy arts, music, language enrichment, outdoor and indoor play and Shabbat celebrations.

Two Years Old

Two day programs with Monday and Wednesday or Tuesday and Thursday options available.

Three and Four Year Olds

Three year olds may attend three or five days a week, four year olds

attend five days a week.

Lunch Bunch Enrichment Programs

A rich array of classes extend the pre-school morning to 1:30 p.m. Children bring their own kosher lunches and enjoy ballet, gymnastics, music, drama, science and more. (Full day children may also participate in Lunch Bunch programs).

Full Day Child Care (Children 12-24 months)

Full week and part-week options are available. Child care is offered from 7:15 a.m. to 5:45 p.m.

Walking One Year Olds

This is a twelve month program which provides a warm, nurturing and emotional environment, while stimulating language, physical and cognitive development through age-appropriate experiences. A 4:1 ratio is maintained.

Two Year Olds

Age-appropriate experiences continue the nurturing and development in the one year old program. With an emphasis on self-help skills, language development, social skills and cognitive stimulation. This is also a twelve month program. Children enjoy swimming during summer months.

Three and Four Year Olds

Children enjoy age-appropriate experiences. Children must be three or four by November 30.

Early Morning Care

The full pre-school program, with

the addition of another gym program and weekly swim class in the afternoon and summer camp options, provides year round child care.

Parent Involvement

Opportunities to serve on the Early Childhood Services Committee and PTA/Parent Volunteer Corps complete our child care program.

The Family Education Center

- Pre and post-natal fitness classes
- Nursing mothers meetings
- Parenting courses
- Family education programs
- Lectures and workshops for parents

Children's Services

Director: Michael Grossman
Children's Services Committee Chairpersons: Rona Caplan and Connie Sugarman

Kidsplace

(Kindergarten - 6th Grade)

Kidsplace provides the best daily after school child care/enrichment program. It is offered Monday through Friday until 5:45 p.m. Kindergarten Kidsplace and Kidsplace activities include arts and crafts, swimming, gymnastics, sports, outdoor adventure, a homework area and much more. A wide array of enrichment programs in sports and cultural arts are available. A daily, kosher, nutritious snack is served.

Safe, reliable transportation from selected area schools to the JCC and local Hebrew schools is also available.

School's Out Days provide programs for area (Brandywine, AEA and Pilot) school vacations and conference days. Some days include field trips, other will include special programs at the JCC. When available, swimming will be included. On snow days, the JCC plans to provide school-age care. Listen to your local radio station for more information.

Family holiday and cultural programs offered celebrate Jewish holidays and season fun throughout the year. For additional information, please call Michael Grossman at 478-5660.

Youth Groups

B'nai B'rith Youth Organization

BBYO is housed at the Jewish Community Center. BBG (girls) and AZA (boys) serves teens in 9th through 12th grades. This program provides area teens with a chance to develop leadership skills through participation in a variety of social, athletic, cultural, educational, religious activities and community service.

For more information about the following groups call the JCC at 478-5660.

Wilmington AZA — Gregg Fink, President

Wilmington BBG — Jill Levin, President

Newark BBYO — Stacy Schwartz, President

Dover BBYO — Joan Ellis, Coordinator

Adult Institute of Jewish Studies

Arnold Harris - Chairman
475-7066

Begun in the fall of 1991, this program is co-sponsored by all of northern Delaware's synagogues and the Jewish Community Center. A variety of courses are offered over a period of seven weeks. Courses are taught by local professionals — rabbis, cantors, teachers.

Beth Emeth Synagogue Youth Group

BESTY is a Mid-Atlantic Federation of Temple Youth which provides programs for 9th through 12th graders. The youth group helps teens develop leadership, meet new friends, participate in social, athletic, educational and religious activities. NIFTY is the national organization of the youth group. Regional and national conclaves are held throughout the year.

For more information about BESTY contact:
BESTY 9th thru 12th grades Advisor for both groups is Rabbi Sarah Messinger 762-5858
BESTY Jrs. 7th & 8th grades

Kadima

Kadima is an international youth organization sponsored by the Department of Youth Activities of the United Synagogue of America. Geared towards grades 5 through 8, it offers each participant the chance to see that being Jewish and part of a synagogue can and does mean having a good time. The organization provides a number of social activities including field trips, overnights, community service activities and fundraisers.

For more information, contact Jeff Drowos, Vice President and Chair of Youth Activities Committee, at 478-1329.

B'nai B'rith Hillel

Rabbi Stephen Booth
Chair of Advisory Committee - Dr. Vivian Klaff
Director - Ruth Kershner, LCSW

B'nai B'rith Hillel has a presence on the University of Delaware campus 300 students strong. Currently they hold several activities a week, providing a mix of social, cultural, religious and educational programs. Programs include: bagel and lox brunches, Shabbat dinners, weekly Kabbalat Shabbat services, movie nights, trips to nearby cities, and Israel nights. In addition to regular events and programs, students this year were able to attend high holiday services on campus. Steady growth of this organization will soon necessitate a move to larger facilities.

For more information, call the Hillel office at 453-0479.

Albert Einstein Academy

Principal - Eleanor Weinglass
President - Rand Snyderman

The purpose of the school is for children, while obtaining a complete secular education, to develop a sense of values in the context of Jewish knowledge and identity.

Students at the Albert Einstein Academy are provided with curriculum in two areas, secular and Judaic. As a kindergarten to sixth grade school, the secular education includes a full curriculum of reading,

language arts, social studies, math and science. Emphasis is put on problem-solving and cooperative learning activities. AEA also offers art, music, physical education and computer programs. Computer and French clubs are offered after school.

The Hebrew curriculum focuses on developing Hebrew language skills as well as a knowledge of Jewish traditions, Bible, history and synagogue skills. As a community

day school there is a focus on sensitivity to Jewish pluralism, as well as a respectful attitude toward learning.

In small classroom settings, the school combines the best of both worlds, the pursuit of academic excellence and a positive sense of Jewish identity.

Call the school at 478-5026 for further information about the program or to arrange an opportunity to observe classes.

Delaware Gratz

101 Garden of Eden Road, Wilmington, DE 19803

Principal - Elaine Friedberg
President - Dr. Jay Welsberg
478-5026

Delaware Gratz provides a five year program of Jewish studies on a secondary level which includes Bible, Jewish history, ethics, issues, law and Hebrew literature and language utilizing the Ulpan method for conversational Hebrew.

Students are provided with the knowledge and enthusiasm that helps them to develop a positive Jewish identity, to have concern and responsibility toward fellow Jews and to counter the secularism and agnosticism that frequently permeate college campuses.

All Gratz teachers are certified and knowledgeable in their fields and have both talent and experience relating to adolescents.

High school and college credits as well as teaching certificates are granted to those who complete the curriculum. Classes meet Sundays from 10 a.m. to 1 p.m. and Tuesdays and Thursdays, 7 p.m. to 9:10 p.m. Part time programs are available.

The Judaic Workshop

The Judaic Workshop provides a Jewish educational experience to educationally exceptional young adults who have learning disabilities and who cannot be served by congregational religious schools. Presently housed at The Mary Campbell Center, a Jewish enrichment program is held every week for those who would not otherwise have any Jewish education. This program is financially supported by the Jewish Federation of Delaware. For more information contact Helen Gordon at 762-2705.

Chagall Pin

Original Design

Handmade of decoupage and clay - gilded and signed by Maryland Artist Alice Gamse. Gift boxed. Satisfaction guaranteed.

\$45 plus \$3.50 S&H - Make check to:

Alice Creations, Inc.,
2210 Ken Oak Rd., Baltimore, MD 21209
Tel. (410) 466-5458
Visa / MC Accepted

Member of Museum Store Association



2-1/2" to 3" high

MILTON & HATTIE KUTZ HOME



TwelveSquare Enterprises

Advertising Layout & Design
Public Relations
Brochures & Direct Mail
Marketing Research
Advertising Sales
Meetings & Seminars



2204 Dorval Road Wilmington, DE 19810
475-5794

INITIALLY YOURS FROM THE RING LEADERS

Linda

PP1) Name necklace
*CompVal \$120.00
Our Price \$59.98

Paula

PP2) Diamond-cut name necklace
with diamond *CompVal \$180.00
Our Price \$89.98

14kt. Gold
Diane

PP3) Large name necklace
*CompVal \$180.00
Our Price \$89.98

Prices are for up to 6 letters. Extra letters may be ordered for an additional charge. Allow 2 weeks for delivery.

Jodi

PP4) Diamond-cut name necklace
*CompVal \$160.00 Our Price \$79.98

Maria

PP5) Diamond-cut name necklace with diamond
*CompVal \$200.00 Our Price \$99.98

14kt. Gold

PP6) Name ring with diamonds
*CompVal \$480.00 Our Price \$239.98

Prices are for up to 6 letters. Extra letters may be ordered for an additional charge. Allow 2 weeks for delivery.

M

PP7) Diamond initial ring
*CompVal \$340.00
Our Price \$169.98

Maries

PP8) 15 diamonds *CompVal \$500.00
Our Price \$249.98

Brenda

PP9) 25 diamonds *CompVal \$700.00
Our Price \$349.98

Diamond Name Necklaces
Set in 14kt. Gold

Danna

PP10) 14 Ct. 7.W. diamonds *CompVal \$900.00 Our Price \$449.98

Prices are for up to 6 letters. Extra letters may be ordered for an additional charge. Allow 2 weeks for delivery.



824 MARKET STREET
ON THE MALL
OPEN MON. THRU SAT. 9 AM TO 5 PM
655-6253

BRANMAR PLAZA
MARSH & SILVERSIDE RDS.
OPEN MON. THRU FRI. 10 AM TO 9 PM
SAT. 10 AM TO 6 PM • SUN. 11 AM-5 PM
475-3101

4377 KIRKWOOD PLAZA
KIRKWOOD HWY.
OPEN MON. THRU FRI. 10 AM TO 9:30 PM
SAT. 10-6 • SUN. 11 AM-5 PM
999-9901

JEWELERS GEMOLOGISTS

704 River Road
Bellefonte
Wilmington, DE 19809
764-7000
President - Donald F. Parsons, Jr.
Executive Director - Daniel G. Thurman
Auxiliary of the Milton & Hattie Kutz Home
Ethel B. Parsons, President

The Kutz Home is proud of its reputation for being one of Delaware's finest nursing homes for the elderly. It offers its 82 residents comprehensive medical and nursing services as well as a full program of recreational and social activities.

Located in an attractive residential setting, the Home is a bright and

vibrant facility with a warm and relaxed atmosphere.

Continuous renovation of the Home has been made possible with funds raised by the Auxiliary of the Milton & Hattie Kutz Home, an organization whose volunteers also lend many caring touches to life at the Home.



Exotic, Mysterious, Wonderful

Casablanca

Enjoy a 7 Course Dinner
Featuring:

Chicken, Lamb, Beef,
Shishkabobs, Couscous
and Moroccan Baklava

\$18 per person



December 12, 1992
January 2, 1993
Middle Eastern
&
Traditional
Male Belly Dancing
Featuring
Omar

Casablanca is a pleasant trip to an exotic land, an intimate and lavish atmosphere with belly dancers providing the entertainment. Come...discover the mysteries of Morocco. It's an experience you won't soon forget.

Holiday parties for up to 200 people
Belly Dancers Fri. & Sat. Nights

Voted #1 Del. Today Exotic Restaurant • Top 10 for the Money • Top 10 New Restaurant

4010 DuPont Highway, New Castle
(302) 652-5344

Hours: Every Day 5:30 PM-1:30 AM

PROFESSIONAL SERVICES

ACCOUNTANTS

MITCHELL B. SMITH, CPA
*Tax & Financial Planning for Businesses
 and Individuals*
 102 Rodney Bldg.,
 Concord Plaza
 3411 Silverside Rd.
 Wilmington, DE 19810
 478-8805

ATTORNEYS

CAROL A. CASNER
Attorney at Law
 903 French Street
 Wilmington, DE 19801
 888-1968 FAX: 888-2039

ELLEN S. MEYER
Personal Injury, Family Law
 521 West St.
 Wilmington, DE 19801
 429-0344

STEPHEN B. POTTER
Litigation
 First Federal Plaza, Suite 200
 Wilmington DE 19801
 658-8940

1255 Professional Bldg.
 Peoples Plaza
 Glasgow, DE 19702
 832-6000

MARSHA ZUTZ BORIN
General Practice
 P.O. Box 335
 Rockland, DE 19732
 888-2900

BANKING

DIANE E. BERGER V.P.
*Merchantile Mortgage Corp.
 Residential Mortgage, Financing and
 Re-Financing*
 3505 Silverside Rd.
 Wilmington, DE 19810
 (O) 479-8350 (H) 764-8384

VINCE DUOBINIS
Equity Mortgage Co., Inc.
 62 N. Chapel Street
 Suite 003
 Newark, DE 19711
 737-1900

CHIROPRACTIC

MICHAEL P. KELMAN, D.C.
Kelman Chiropractic Center, P.A.
 3722 Old Capitol Trail
 Wilmington, DE 19808
 (302) 998-2060

DENTISTS

LAWRENCE P. JACOBS, D.D.S. F.A.G.D.
Adult Restorative Dentistry
 708 Foulk Rd.
 Wilmington, DE 19803
 762-6400

SIRKIN-LEVINE DENTAL ASSOCS., P.A.
*Dr. Stanford Sirkin, D.D.S., P.A.
 Alan R. Levine, D.D.S., P.A.*
Family Dentistry
 2018 Naamans Road
 Wilmington, DE 19810
 475-3743

GARY D. SAFIAN, D.D.S.
Family Dentistry
 707 Foulk Road
 Wilmington, DE 19803

PSYCHOLOGY

PENELOPE NECKOWITZ, Ph.D.
Licensed Psychologist
Psychotherapy, Individuals, Couples
 19-C Trolley Square
 Wilmington, DE 19806
 421-9900

JONATHAN LEWIS, Ph.D.
Psychologist
 2500 Grubb Road, Suite 143
 Wilmington, DE 19810
 475-3663

MELANIE W. LEWIS, Ph.D.
Psychologist
 2500 Grubb Road, Suite 143
 Wilmington, DE 19810
 475-3663

PHYSICIANS

JEFF ARBUCKLE, M.D.
Family Practice
 3518 Silverside Rd
 Wilmington, DE 19810
 (302) 477-1960

STEVEN E. DIAMOND, M.D.
Family practice
 707 Foulk Road, Suite 101
 Wilmington, DE 19803
 655-8868

RUSSELL J. LABOWITZ, M.D.
Rheumatology
 1010 North Bancroft Parkway
 Suite 23
 Bancroft Medical Bldg.
 Wilmington, DE 19805
 655-0121

DR. MICHELE B. MEDWIN
Family Optometry
 1809 Marsh Rd.
 Wilmington, DE 19810
 475-8897

PEDIATRIC ASSOCIATES, P.A.
DAVID A. LEVITSKY, M.D.
CHARLES L. MILLER, M.D.
JOSEPH A. VITALE, D.O.
NEAL B. COHN, M.D.
DAVID M. EPSTEIN, M.D.
VICTORIA A. LEVIN, M.D.
Pediatrics
 110 Christiana Medical Center
 Newark, DE 19702
 368-1561

KENNETH R. PEARLBERG, M.D.
Ophthalmology
 3411 Silverside Road
 Wilmington, DE 19810
 478-5895

RICHARD L. SHERRY, M.D.
Ophthalmology
 2500 Grubb Rd. Suite 234
 Wilmington, Delaware
 475-6500

Glasgow Medical Center
 Rt. 896 & Rt. 40
 Newark, DE
 836-3937

NADIV SHAPIRA, M.D.
Cardiac Surgery
 4745 Ogletown-Stanton Rd.,
 Suite 205
 Newark, DE 19713
 738-0448

REAL ESTATE

PHILIP BERGER
Weichert Realtors
 3302 Concord Pike
 Wilmington, DE 19803
 (O) 478-3800 (H) 764-8384

BERNIE FREIMARK
Weichert Realtors
 3302 Concord Pike
 Wilmington, DE 19803
 (O) 478-3800 (H) 475-1069

COUPON

PERMANENT HAIR REMOVAL
"NEW MULTI-PROBE COMPUTER"

AREAS TREATED

- FACIAL • LEGS
- NECK • ABDOMEN
- BACK • BIKINI
- BREAST • UNDERARMS

TANYA CAREY, RN
LICENSED ELECTROLOGIST

656-9828

CAREY ELECTROLYSIS, INC.
Ste. 12, 1701 Augustine Cutoff
Wilmington, DE 19803

SPECIALIZING IN LARGE BODY AREAS

50% OFF
Your 1st Treatment
With this Coupon.
(New Clients Only)

FREE CONSULTATION INCLUDING Mini-Treatment

- *Faster Results*
- *More Effective*
- *Cost Efficient*
- *Minimal Discomfort*

JEWISH FAMILY SERVICE

101 Garden of Eden Road
Wilmington, Delaware 19803
478-9411
President - Joan Wachstein
Executive Director - Arnold Lieberman, LCSW

Jewish Family Service offers a range of services for Jewish individuals and families.

INDIVIDUAL AND FAMILY COUNSELING

Jewish Family Service offers skilled professional counseling in dealing with family problems such as marital difficulties, parent-child relationships, mental and physical health, individual adjustment, and changes in life situations.

SPECIAL SERVICES TO THE ELDERLY

Services include counseling, friendly visiting, monitoring, linkage to needed services, and case management.

JEWISH FAMILY LIFE EDUCATION

Group discussion designed to enable individuals and families to better cope with phases of normal development and situational stress. These programs also promote the growth of Jewish identity and the Jewish family and community.

COMMUNAL SERVICES

Services include visitation to Jew-

ish patients in institutions; holiday assistance; assistance to Jewish transients; and limited material and financial aid.

INFORMATION AND REFERRAL

Jewish Family Service can help if you are not sure what kind of help you need; whether it exists; where it is to be found; or how to avail yourself of it.


RESETTLEMENT

Jewish Family Services assists in the resettlement of Soviet families in our community. Jewish Family Service staff and volunteers provide various services designed to en-

able the refugees to become self-sufficient and assimilated in both the Jewish and general communities.

The agency office is open from 9 a.m. to 5 p.m. Monday, Tuesday, and Thursday; Wednesday from 1 p.m. with evening hours by appointment.; Friday, 8:30 a.m. to 4 p.m. All appointments must be scheduled in advance by calling the office. Fees are charged on a sliding scale, and some counseling services are covered by health insurance. Although the agency has a Jewish orientation, the services are available to anyone in need of help. Strict rules of confidentiality are maintained.





Albert Einstein Academy

- ☆ challenging curriculum
- ☆ small classes
- ☆ a nurturing environment
- ☆ a complete Judaic program
- ☆ programs in art, music, gym and computer science
- ☆ busing provided for PA students from several school districts

Your child's private/Jewish education can begin in any grade.

The Hebrew Day School of Delaware
Kindergarten-6th Grade

Call Eleanor Weinglass at (302) 478-5026

101 Garden of Eden Rd., Wilm., DE 19803

A.R. MORRIS

Jewelers

Delaware's Watch Store

DON'T CRACK UNDER PRESSURE

6000



18-karat gold and steel



TAGHeuer

SWISS MADE SINCE 1860

A.R. MORRIS

Jewelers

802 Market Street Mall • Wilmington, DE • 302-658-4013






the Happy Difference



HAPPY HARRY'S

DISCOUNT DRUG STORES!

JEWISH LIFE



IN DELAWARE

TAKING ACTION

Names and addresses of the United States senators and representative from Delaware are listed below.

For more information on state and other officials or for information or consultation on specific issues, contact Lelaine Nemser, Director of the Jewish Community Relations Committee of the Jewish Federation of Delaware, 101 Garden of Eden Road, Wilmington, DE 19803, or call 478-6200.

United States Senators
Joseph R. Biden (D)
489 Russell Senate Office Bldg.
Washington, DC 20510
202-224-5042
In DE, 302-573-6345

William V. Roth, Jr. (R)
104 Hart Senate Office Bldg.
Washington, DC 20510
202-224-2441
In DE, 302-573-6291

United States Representative
Thomas R. Carper (D)
131 Cannon House Office Bldg.
Washington, DC 20515
202-225-4165
In DE, 302-573-6181

*January 1, 1993 Governor Michael N. Castle will assume this position.



Your KEY to HOLIDAY Gift Giving

1992-93 3-Show Subscription Series

Gift Certificates available

THE PLAYHOUSE THEATRE
DU PONT BLDG. • WILMINGTON, DE 19801

January 15 - January 24, 1993

Neil Simon's Tony Award-winning comedy/drama!

American Express® Gold Card presents

NEIL SIMON'S LOST IN YONKERS

Directed by **GENE SAKS**

February 5 - February 13, 1993

Winner of 3 Tony Awards! A musical for the entire family.

THE WORLD GOES ROUND

THE KANDER & EBB MUSICAL

February 26 - March 7, 1993

"An outpouring of song and dance" - NY Times

Series prices range from \$80.00 to \$122.00

Broadway Gifts Available at **THE STAGE STAND**

SUBSCRIBE NOW! (302) 656-4401

Holiday Clean-up



Give Yourself A Holiday Treat!

4 Rooms For \$31.95*

Includes one kitchen, one bathroom and any two other rooms of your choice. Pay only \$4.50* for each additional room; \$6.95* for each additional bathroom.

Call Adele Ross Today!

(302) 479-9262 • (215) 388-8696

Gift Certificates Available

* All rooms must be of average size & condition

Licensed • Bonded • Insured

WE GUARANTEE THE FRESHEST AND FINEST SEAFOOD!



Restaurant/Retail Market

BRANMAR PLAZA MARSH & SILVERSIDE ROADS

(Next to Happy Harry's) Open Mon.-Sat.

VISA MC 475-FISH 475-7000

Mon.-Fri. 10 am - 9 pm Sat. 10 am - 6:30 pm

Fresh Seafood
Homemade Platters
and Sandwiches
Gourmet Specialties
Eat in or Take Out
Wine & Beer Served

- Fresh-cut Flowers
- Fresh Arrangements
- Silk & Dried Flowers
- Silk greens & Silk trees
- Blooming Plants
- Green Plants

SATISFACTION GUARANTEED ON EVERY ORDER



- Fruit & Gourmet Baskets
- Balloon Bouquets
- Special Event Plant Rentals
- Weddings

Village Green Flower Shop

764-5498

At Lea Blvd. & Miller Rd.

8:30-5pm, Mon.-Sat.

COMPREHENSIVE EYE CARE
Richard L. Sherry, M.D.

Diplomate American Board of Ophthalmology

Specializing in

No Stitch/Single Stitch Cataract & Implant Surgery

Laser Surgery • Glaucoma

Now Offering
Refractive Surgery/Radial Keratotomy

New Offices

Brandywood Plaza
2500 Grubb Road
Suite 234

(corner of Foulk & Grubb Rds., across from Stanley's Restaurant)

475-6500

Glasgow Medical Center

(Rt. 896 & Rt. 40)

Newark

836-EYES (3937)



Serving the Tri-State area since 1919.

Foreign & Domestic Car Parts

9 - 7 Daily • 9 - 3 Saturday

12 - 3 Sunday

Jess Auto Supply

654-6021

Protect yourself and your family.

Join today.



BLOOD BANK OF DELAWARE, INC.

Most employers offer the extended benefits of the Blood Bank's group plan. Join where you work or call for membership information (302) 737-8400.

Now is the time to Reduce this year's taxes

- We can reduce your overall tax liability with a comprehensive, year-round tax planning program.
- We specialize in multi-state and relocation tax issues.
- We will review prior year returns to check for possible missed refund opportunities.
- Call for a no obligation, confidential interview.

MITCHELL B. SMITH & Co., P.A.
CERTIFIED PUBLIC ACCOUNTANTS

PERSONALIZED PROFESSIONAL SERVICE
SERVICING ALL TYPES OF
BUSINESSES AND PROFESSIONALS

Concord Plaza
102 Rodney Building
Wilmington, Delaware 19810 **302-478-8805**

JEWISH LIFE



IN DELAWARE



Possum Park Mall
Newark, DE 366-8377

"Judy's"

New York Style Deli

Smoked fish • Cold Cuts
Party Platters • Catering

We're "NEW" in Newark

CONNECTIONS TO ISRAEL

Israeli Consulate
Israel Peleg, Consul
230 South 15th Street, 8th floor
Philadelphia, PA 19102
215-546-5556

El Al Israel Airlines
3 Penn Center Plaza

Philadelphia, PA 19103
215-563-8011

Israel Bonds
Development Corporation for Israel
230 South Broad Street, Suite 19W
Philadelphia, PA 19101
1-800-752-5671

Now Receive

"the legendary taste"
In Your Home
call Our

Newest Location
888-2222

Fairfax Shopping Ctr.

Limited Area

Grotto Pizza
the legendary taste

SUPPORT OUR ADVERTISERS

THEY HELP BRING YOU THE JEWISH VOICE



LOCAL CHAPTERS OF NATIONAL ORGANIZATIONS

B'NAI B'RITH LODGE NUMBER 470

President:
Jack Levine
8112 Society Drive
Wilmington, DE 19703
792-2637

B'NAI B'RITH WOMEN OF DELAWARE

Local Representative:
Judy Goldbaum
1621 Windybush Road
Wilmington, DE 19810
475-5191

CHABAD-LUBAVITCH OF DELAWARE

Director:
Rabbi Chuni Vogel
1306 Grinnell Road
Wilmington, DE 19803
478-4400

Chabad House at the University of Delaware
208 Cheltenham Road
Newark, DE 19711
455-1800
Rabbi Eliezer Sneiderman

HADASSAH

Wilmington Chapter
President:
Ruth Goodman
2806 Bodine Drive
Wilmington, DE 19810
478-2893

Newark Chapter

Presidents:
Sandy Schwartz
205 Valley Lane
Hockessin, DE
239-2270

Dover Chapter
Contact person:
Perry Pollack
429-9795

HILLEL

64 East Main Street
Newark, DE 19711
453-0479
Rabbi Stephen Booth
.....
Chair of Advisory Committee:
Dr. Vivian Klaff
112 Dennis Dr.
Elkton, MD 21921
410-392-6086

JEWISH WAR VETERANS

Department of Delaware
Israel Weiner
8 Ridgewood Circle
Wilmington, DE 19809
764-2120

Post No. 525/Harry Fineman

Harry Lubin
1106 N. Overhill Court
Wilmington, DE 19810
475-6521

Post No. 747/Nathan Balick
Samuel Braxman
302 Shipley Road
Wilmington, DE 19809
762-4646

Post No. 767/Arthur Blatman

Samuel Geller
310 West 38th Street
Wilmington, DE 19802
764-0636

LABOR ZIONIST ALLIANCE

Financial Secretary:
Thomas Seidel
205 Harvey Road
Claymont, DE 19703
798-1770

NATIONAL COUNCIL OF JEWISH WOMEN

President:
Phyllis Gramlich
8 Willing Way
Wilmington, DE 19807
571-1241

LOCAL ORGANIZATIONS

BRANDYWINE COUNTRY CLUB

President:
Dr. Howard Wilk
2822 Shipley Road
Wilmington, DE 19810
478-2100

JEWISH HISTORICAL SOCIETY

President:
Helen Goldberg
3315 Heather Court
Wilmington, DE 19809
764-8328

MONTEFIORE MUTUAL BENEFIT SOCIETY

President:
Edward Simon
31 West Brite Court
Wilmington, DE 19810
475-7605

VA'AD HAKASHRUTH

Rabbi Nathan N. Schorr
Chairman:
Mark Wagman
475-8351

ATLAS JEWISH DATING

"We will get you a response"
Serving PA, DE, NJ & NY
Write for free application —
P.O. Box 743, Exton, PA 19341
or call (215) 429-1368



Every marriage starts with an introduction.

13 Marriages in just one month!

Connections has been a part of love and marriage for over 16 years; a first step in meeting other single, successful, attractive, professionals. A staff psychologist evaluates each individual, so the people you meet are people you like. Our 70% connection rate has started many wedding bells ringing.

Call Joan Hoffmann, featured on Dr. Ruth, People are Talking, AM Philadelphia and the Channel 3 & 6 Evening News.

CONNECTIONS

215-235-3646

Zaydie's Place

408 Philadelphia Pike
Wilmington, DE 19809

Glatt Kosher Restaurant

Deli & Catering

Call 762-4528

Under the Supervision of Rabbi Chuni Vogel
Now open Saturday evenings 1-1/2 hours after dark



Be Beep
a toy shop

Open 7 Days a week
2900 Concord Pike, Wil., DE
302-478-2667

Where Your Child's Smile Matters



JEWISH LIFE



IN DELAWARE

Providing You and Your Family With The Best Possible Healthcare.




Jeff Arbuckle, M.D.
Family Practice

- ▼ Accepting new patients of all ages
- ▼ Medicare Assignments
- ▼ Most Insurances Accepted

3518 SILVERSIDE RD.
1/4 mile from Rt. 202
(302) 477-1960

Evening Hours

Christopher S. Hunt
Painting Contractor



Free Estimates (302) 475-2222

Exquisitely Yours
Unique Custom Wedding & Shower Accents

Silk Bouquets, Hairpieces, Chupah Cake Tops, Lace Albums, Etched Toasting Glasses, Rental Chupah

BETH I. OSOFSKY
By Appointment
(302) 477-0230

Personalized
Chocolates
for all
Occasions

Concord Plaza
3411 Silverside Road
Wilmington,
DE 19810

Branmar Travel

1804 MARSH ROAD
WILMINGTON, DE 19810

ANNETTE TOBEY (302) 475-4401

PHILIP BERGER
1991 Weichert "Salesperson of the Year"



Weichert Realtors

OFF.: 302-478-3800 • RES.: 302-764-8384
Professional, competent real estate service since 1969

Member: Weichert "Presidents Club" Weichert "Ambassadors Club"

Kids love to be in our shoes.
Parents love everyday savings!

- * Name brands
- * Personal service
- * Wide widths for the entire family

(302) 652-8053
611 King Street
In the ♥ of Wilmington



HAPPY HARRY'S HEALTH CARE, INC.
Home Medical Equipment • Products • Services

- 24 hour Emergency Service
- Free Set-up and Delivery
- Medicare and Third Party Billing
- Hospital Beds
- Walkers
- Repair Services
- Diabetes Supplies
- Mastectomy Supplies



HAPPY HARRY'S Health Care, Inc.
Call (302) 454-4941 For All Your Home Health Care Needs

Three convenient locations

311 Ruthar Drive Newark, DE 19711 (302) 454-4941
Baycourt Plaza Dover, DE 19901 (302) 678-0504
16-A Trolley Square Wilmington, DE 19806 (302) 654-8181

JEWISH HOLIDAYS



THE MOST IMPORTANT HOLIDAY —
SHABBAT (shah BOTT)

The Sabbath commemorates God's day of rest on the 7th day of Creation. Shabbat begins every Friday evening.

No work is done in traditional Jewish homes. It is to be a day of rest and cultural growth.

THE BEGINNING OF THE YEAR —
ROSH HASHANAH (rosh hah shah NAH)



It begins a 10-day period of repentance and prayer which ends on Yom Kippur. It may be observed for 1 or 2 days.

Rosh Hashanah marks the anniversary of the birthday of the world. It is the day PEOPLE ARE JUDGED FOR THEIR ACTIONS DURING THE PAST YEAR.

THE DAY OF ATONEMENT —
YOM KIPPUR (Yom kee PUR)



It is the HOLIEST DAY in the Jewish calendar and it ends the Ten Days of Repentance. It is spent in PRAYER, MEDITATION and FASTING in order to start the new year with a clear conscience.

THE FEAST OF TABERNACLES (booths) —
SUKKOT (soo KOT)



The harvest festival — It is named for huts (sukkot) hung with fruits and vegetables set up to recall the temporary field dwellings which farmers traditionally used during harvest time. It may be observed for 7 or 8 days but only the first two and last two days are full holidays.

They also symbolize the huts in which the Jews lived during their journey from Egypt.

THE FEAST OF DEDICATION —
HANUKKAH (HA noo kah)



An 8-day celebration of the Jews' victory over the Syrians in 165 B.C.E. and their regaining political and religious freedom.

Hanukkah is also called the "Festival of Lights" because, at the rededication of the Temple in Jerusalem, the sacred lamp burned for 8 days on 1 day's supply of oil.

No work restrictions

THE FEAST OF LOTS —
PURIM (POO rim)



A holiday which celebrates the rescue of the Jews in Ancient Persia from a plot to destroy them. The King's advisor, Haman, cast lots and chose this day for carrying out his plans.

Esther, the Jewish queen, discovered the plot and persuaded her husband to spare the Jews.

No work restrictions

THE FEAST OF PASSOVER —
PESACH (PEH sah)



It commemorates the Exodus of the Jews from Egypt, the beginning of Jewish independence. It may be observed for 7 or 8 days, but only the first two and last two days are full holidays.

The name refers to God's "passing over" the homes of the Jews when He sent plagues to convince the Egyptian Pharaoh to let them go.

THE FEAST OF HARVEST (First fruits or weeks) —
SHAVUOT (she voo OT)



Marks the end of the early grain harvest.

Shavuot also commemorates Moses receiving the Torah (First 5 books of the Bible), with its 10 commandments, from God on Mount Sinai.

Jewish Holiday Calendar - 1992-1997

This calendar has been prepared to assist you in scheduling events such as major assignments, examinations, assemblies, field trips, and graduations as well as school-related programs for parents. Courts, legislative bodies and administrative agencies may also find the calendar helpful in avoiding scheduling conflicts.

Jewish holidays begin at sundown on the preceding evening and conclude at sundown on the dates noted. For example, Rosh Hashanah in 1992 begins Sunday, September 27 at sundown and concludes on Tuesday, September 29 at sundown. The weekly Jewish Sabbath begins at sunset on Fridays and concludes at sunset on Saturdays.

So as not to penalize students or workers for their religious observance, we ask that scheduling of events on Jewish holidays, the Jewish Sabbath, and the evenings preceding these occasions be avoided.

If you have any questions or need further information, please contact the:



Jewish Community Relations Committee
of the Jewish Federation of Delaware
101 Garden of Eden Road • Wilmington, DE 19803
302/478-6200

	1992-1993	1993-1994	1994-1995	1995-1996	1996-1997
* Rosh Hashanah (Jewish New Year)	Sept. 28-29	Sept. 16-17	Sept. 6-7	Sept. 25-26	Sept. 14-15
* Yom Kippur (Day of Atonement)	Oct. 7	Sept. 25	Sept. 15	Oct. 4	Sept. 23
* Sukkot - First Days (Feast of Tabernacles)	Oct. 12-13	Sept. 30 - Oct. 1	Sept. 20-21	Oct. 9-10	Sept. 28-29
* Shemini Atzeret	Oct. 19	Oct. 7	Sept. 27	Oct. 16	Oct. 5
* Simchat Torah (Rejoicing of the Law)	Oct. 20	Oct. 8	Sept. 28	Oct. 17	Oct. 6
Hanukkah	Dec. 20-27	Dec. 9-16	Nov. 28 - Dec 5	Dec. 18-25	Dec. 6-13
Purim	March 7	Feb. 25	March 16	March 5	March 23
* Pesach - First Days (Passover)	April 6-7	March 27-28	April 15-16	April 4-5	April 22-23
* Pesach - Last Two Days	April 12-13	April 2-3	April 21-22	April 10-11	April 28-29
* Shavuot (Feast of Weeks)	May 26-27	May 16-17	June 4-5	May 24-25	June 11-12

An asterisk * denotes the Jewish High Holy Days and major Biblical festivals in observance of which labor is traditionally prohibited. As a result many Jewish individuals are absent from both school and work.

BOYD'S FLOWERS

Where artists bring beauty to bloom.

421-2900

824 Market St. Mall • 2013 Penna. Ave.

**WE BELIEVE YOU CAN NEVER START TOO EARLY
HELPING KIDS REACH THEIR FULL POTENTIAL.**

SO WE STARTED IN 1748.



WILMINGTON FRIENDS SCHOOL
Where Kids Grow Into Their Dreams.SM
For more information call (302) 576-2930.
101 School Road, Alapocas • Wilmington, Delaware 19803

- Cards. Books. Unique gifts.
- Stationery.
- Calligraphy.
- Pens. Paper jewelry. Frames.
- Address books. Date books.
- Calendars.
- Holiday cards.
- Party invitations. Wedding invitations.
- Bar and bat mitzvah invitations.
- Coffee & conversation.

Communique

... Expressions from the heart

5806 Kennett Pike Centreville, Delaware
302-655-1299 Monday-Saturday 10-5:30

Halina Wind Preston Holocaust Education Center

The Halina Wind Preston Holocaust Education Center provides the community with programs and resources for the study of the Holocaust — that infamous period between 1933 and 1945 when six million Jews and countless others were deemed "unworthy of life" and exterminated by the Nazis.

Through programs and activities and the personal testimonies of witnesses, the Holocaust Education Center educates the community about the lessons of the Holocaust — that anti-Semitism, racism, hatred and bigotry can lead to genocide — and seeks to create an awareness that it must never hap-

pen again.

In May 1978 Halina Wind Preston and Dorothy Finger organized the Holocaust Education Committee. Both lived in Poland until Nazi Germany invaded and they were forced into hiding. Their experiences were ones of suffering, remarkable courage and survival. Upon Preston's

death the Holocaust Education Committee was named in her memory and developed the Halina Wind Preston Holocaust Education Center.

Holocaust Education Resource Center

Books, periodicals, teaching guides and audiovisual materials about the Holocaust are available at the Resource Center in the Jewish Community Center, 101 Garden of Eden Road, Wilmington. Students, teachers and the public are encouraged to borrow these materials. The collection is listed in the Union Catalogue of Delaware Libraries.

Garden of the Righteous Gentiles

Non-Jews who placed their own and their families' lives in jeopardy to save Jews during the Holocaust are honored in the Garden of the Righteous Gentiles at the Jewish Community Center. Those remembered in the Garden are Gentile

Holocaust Testimonies

Videotapes of the testimony of Holocaust survivors and liberators living in Delaware were made with the assistance of WHY-TV 12 for the collections of the Fortunoff Video Archive for Holocaust Testimonies at Yale University and the Special Collections of the University of Delaware Library. The tapes are available at the Universities to students and scholars for research purposes only.

Holocaust Remembrance Day (Yom Hashoah)

Each spring the community gathers in remembrance of the victims of the Holocaust. The public commemoration is held in Freedom Plaza, Wilmington, at the Holocaust Memorial created by Albert Weinberg. This is the time for reflection on the millions killed by the Nazis between 1933-45. It is a time to invoke the brotherhood of all peoples

Visit our NEW GOURMET COFFEE Department all fresh ground to your specs TRY SOME!



Delicious

We think we're unique!

It's not just our complete MAP and GLOBE CENTER, our HUMIDOR of FINE CIGARS & TOBACCOS, GOURMET CANDIES and COFFEES, or even our array of over 5000 BOOK TITLES... it's just us... **we love what we do!**

THE SMOKE SHOP

CIGARS • GLOBES & MAPS • BOOKS
GOURMET CANDIES • COFFEES

"Send a Book"

WHOLESALE • RETAIL • MAIL ORDER

Delaware Ave. at DuPont St., Wilmington Del.
 (302) 655-2861 (215) 358-1324
 Toll Free 1-800-695-6100

HOURS:
8:30 AM TO 10 PM

FOR ALL YOUR LIGHTING & GIFT GIVING NEEDS ALL AT DISCOUNTED PRICES THINK...

Gross

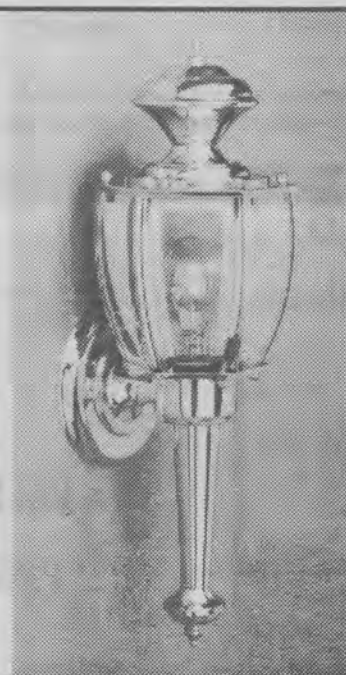
LIGHTING CENTER
SINCE 1919

655-5561

4th & Orange Streets • Wilm., DE • Open Wednesday till 9pm

• WE OFFER WHOLE HOUSE DISCOUNTS •

RESIDENTIAL COMMERCIAL & DESIGNER LINES • ENERGY SAVING PRODUCTS • LIGHTING LAB
RECESSED & TRACK LIGHTING • FIXTURES • INDOOR & OUTDOOR LIGHTING • PADDLE FANS
LAMPS • LIGHTBULBS WHOLESALE • NEWLY RENOVATED SHOWROOMS



- Cannondale
 - Diamond Back
 - Schwinn
 - Univega
 - Giant
 - Mountain Bikes
 - Road Bikes
 - Hybrids
 - BMX
 - Juvenile Bikes, too!
- Helmets, gloves, clothes and other cycling equipment

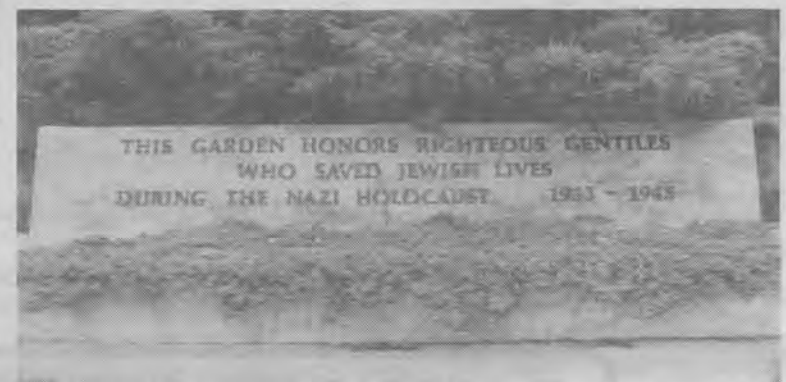
DUNBAR'S CYCLERY

801 PHILADELPHIA PIKE, WILMINGTON

Just south of the Bellevue Park, Philadelphia Pike entrance

PHONE: (302) 764-5802

Open Monday, Tuesday and Thursday 9 to 5:30; Wednesday and Friday evenings 'til 9; Saturday 9 to 4



rescuers of Jews who eventually settled in Delaware. The public is encouraged to visit and programs for students and adults are organized on request.

Children's Memorial

Dedicated to the memory of more than one and one-half million children who perished in the Holocaust, the sculpture by Israeli artist Aharon Bezalel stands at the entrance to the Jewish Community Center.

Speakers Bureau

The Speakers Bureau offers to school and community groups the vivid recollections of men and women who witnessed the Holocaust. Speakers include Holocaust survivors, their children, and concentration camp liberators. Other knowledgeable speakers are also available.

Kerr Book Fund

Selected titles dealing with the Christian response to the Holocaust and Christian-Jewish relations are donated to Delaware's Christian clergy, school libraries and interested teachers. The project endeavors to promote knowledge of the Holocaust and better understanding between Christians and Jews.

and pledge vigilance against hatred and discrimination which can lead to future genocide.

Halina Wind Preston Memorial Program

Dedicated to the memory of Halina Wind Preston and endowed by her family, the Center brings nationally recognized Holocaust scholars, lecturers, exhibits and programs to Delaware.

Special Events

Conferences and workshops on the meaning and history of the Holocaust are offered to community groups. Programs observing significant anniversaries augment existing educational programming.

The Jewish Federation of Delaware, the Jewish Community Center, private foundations and individual memorial and tribute contributions support the work of the Halina Wind Preston Holocaust Education Center.

For further information, please contact: Halina Wind Preston Holocaust Education Center, Jewish Federation of Delaware, 101 Garden of Eden Road, Wilmington, DE 19803, (302) 478-6200.

ALL PRODUCTS ARE FRESH-BAKED ON PREMISES EVERY MORNING • 7 DAYS A WEEK

Under The Supervision of Va'ad Ha Kashrut For Baked Take-Out Goods Excluding Donuts!

Voted Best Bagels & Coffee in Delaware

Try our breakfast & lunch specials & our new cookie & pastry selection.



Bagels & Donuts Inc.

SILVERSIDE & MARSH RD. 478-9016 • 1901 PENNA AVE. 652-7960

JEWISH LIFE

Letter from a newcomer

Dear Editor:

When we moved here three years ago from Milwaukee, Wisconsin, where my children attended one of the finest elementary schools in the country, we decided to take our children to Albert Einstein Academy even though we lived in Newark and it meant an hour's commute each way. It was a major commitment on our part, but it has paid-off.

My children, Jacob and Rebecca, attended A.E.A. for three years (my son, 4th, 5th, and 6th grades; my daughter, 3rd, 4th, and 5th grades). They are now attending The Independence School, where they are thriving. They are in advanced math and science classes and were both offered to study Latin (by invitation of the teacher). I believe their success in their new school is due to their preparation at A.E.A. Their small class sizes often put my children in a situation very much like that of a private tutorial, providing them with an exceptional learning environment.

My children know who they are in the world. Their Jewishness is a great source of pride for them, something they feel is a very natural, comfortable heritage. The years they spent at A.E.A. studying with Michael Cherin and other Jewish educators, as well as the everyday practices (both academic and religious) of the school has had a very positive impact on their lives. The daily reinforcement and celebration of their Jewish heritage has given them the freedom to be Jewish, and enables them to live comfortably in a non-Jewish world.

My son was Bar Mitzvahed this summer, and he found great joy in both the process and the actual event. He was well-prepared by the years in A.E.A. and by Rabbi David Kaplan at Temple Beth El. My daughter is now continuing her religious training at Temple Beth El three days a week and is sincerely enjoying and excelling in this as well.

Jacob and Rebecca have had excellent preparation in math and science. They were taught by Judy Smith at A.E.A. for three years. She is truly one of the most remarkable educators I have ever encountered. She made these subjects come alive and be challenging and fun, even though my children had difficulty adjusting at first due to the math system they had been taught in Milwaukee.

The creative writing skills and the creative approaches to problem-solving and learning in general, have been invaluable to them as well. Both of my children are excited about learning, they love to read and they write creatively at every opportunity.

My children are bright, creative and ethical human beings. A.E.A. and the commitment of the teachers to the children has certainly made a tremendous contribution to, and difference in their lives. We feel very fortunate to have had a school like this in our community.

Sincerely,
Janice Brody-Reidel

IN DELAWARE

■ JANUARY 31 - FEBRUARY 7

CAMPAIGN WEEK



THINK
JEWISH

... AND IMAGINE WHAT WE CAN ACCOMPLISH!



Sealy
Posturepedic
In-Stock

Serta
Posture Sleeper
In-Stock Now

BEMCO
Posture Series
Top Quality

THE
BEST
QUALITY
FOR
THE
LOWEST
PRICE.



WHY BUY WHOLESALE?

Buy the Home Budget Center Way and Receive Delivery, Set-Up & Removal of your old Bedding Plus the Area's Lowest Price! Save on Delaware's best Quality mattress selections only at H.B.C.!



WEST WILMINGTON
4416 Kirkwood Hwy., Opp. Clover & Hechinger
999-9968

PEOPLE'S PLAZA
Rt. 896, Glasgow, DE
Serving Newark, Bear
& Elkton, MD
836-4146

NORTH WILMINGTON
Rt. 202 & Naamans Rd.
Tally Ho Plaza
next to J. Goldberg
479-0449

ברית מילה

Dr. Alan M. Manus
MOHEL

Board Certified Gynecologist

(215) 742-3567 Serving
(609) 354-2036 PA, NJ, DE

"WE SELL THE BEST AND REPAIR THE REST"

HENRY'S BICYCLE SHOP SINCE 1946

MECHANICS ALWAYS ON DUTY

\$5.00 off with this ad Any purchase over \$50.00

2901 Lancaster Ave.
654-0361 • 571-0517

Lady's Image

cocktail casual career

Special Occasion Fashions...

Diane Freis • Oleg Cassini • Count Romi
Anne Crimmons for UMI

3910 Concord Pike • Wilmington • 478-7921

Don't Make a Move to Florida Until You Call...

Rochelle Kramen Green

Your Florida connection for luxury country club and waterfront property.



Gimelstob Realty Inc., BH. & G
One S. Ocean Blvd., Boca Raton FL 33432
800-228-9689 Res. 407-367-1344

TAKE A CLOSER LOOK AT DELAWARE'S FIRST NAME IN EYE CARE

One of the region's leading eye care centers is closer than you think. In fact, it's right here in Delaware at Wilmington Hospital.

Our expert team of ophthalmologists and other professionals can diagnose and treat virtually every eye disorder, from nearsightedness to cataracts, glaucoma, and diabetic complications. What's more, they treat each patient with sensitivity and respect.



The Eye Center at Wilmington Hospital is at the forefront of eye care research and the latest technical advances, including state-of-the-art laser surgery.

If you or someone you love needs expert eye care, call our referral service at 302-428-6208 to set up an appointment with one of our physicians or for more information.

The Eye Center
at Wilmington Hospital
MEDICAL CENTER OF DELAWARE

We're doing more for your family's health

14th & Washington Streets • Wilmington, Delaware



Why keep the Jewish Funeral Jewish?

No matter how far we stray from our roots, Jews in times of need return to the kinship of family and community.

The fabric which binds Jews together as a people and a faith has been woven throughout nearly six thousand years of Jewish history.

Each thread in that fabric represents a Jewish life. Each thread is a link between one generation and the next. Each thread is an indestructible chain linking the past to the future. And each thread is a memory for the living of loved ones who gave them life.

The Jewish funeral ritual is a profound expression of our Jewish heritage. It honors life. It gives purpose to the indomitable Jewish will to survive.

And in the process it helps bring us together. It gives us comfort, elevates our sense of family and recalls the faith and humanity of Jewish tradition.

Why keep the Jewish funeral Jewish? Simply because we're Jews.

The Jewish Funeral Directors of America are committed to preserve the high standards of professionalism and service demanded by Jewish

tradition. Our symbol, which is displayed in each of our member's establishments in the United States and Canada, is an assurance of our understanding and acceptance of our responsibilities to those we serve, to our communities, and to our Jewish heritage.

The Jewish Funeral Directors
of America, Inc.



A MEMBER OF

FORE
THOUGHT

Schoenberg Memorial Chapel

519 Philadelphia Pike Wilmington, DE • 762-0334

The Schoenberg Memorial Chapel serves all segments of the Jewish Community following traditional customs with compassionate service to all during their time of greatest need.

Service in the Jewish Tradition