

Law of Conversion Compromise Agreement Reached

(Editor's note: The following information regarding the compromise agreement concerning the Law of Conversion was issued by The Prime Ministry and distributed to The Jewish Voice via the Israeli Consulate in Philadelphia.)

Formulated in Jerusalem, Sivan 12, 5757, June 17, 1997, between representatives of the Reform (Progressive) and Conservative (Masorti) Movements and the Chairman of the Coalition Executive.

As a result of meetings held over the past few days, in concert with the coalition leadership decision of 11 Sivan 5757, and based upon a common desire to prevent the exacerbation of controversies among world Jewry, we have reached general agreement on the following points:

1. The legal and legislative steps will be postponed in the following manner:

A. The Coalition will act so that the proposed legislation: The Rabbinical Courts Jurisdiction Law (Marriage and Divorce) (Conversion) (Amendment) will not be presented for second and third readings. If the court is asked to act on the conversion issue, this commitment will not apply.

B. All parties will undertake to submit a joint request to be presented no later than 17 Sivan 5757 (June 22, 1997) to the Supreme Court and the Jerusalem District Court, on behalf of the State Attorney, the appellants and petitioners, to request a postponement of the hearings so that the State's response will be given within two weeks from the first day of the Knesset's winter 5758 session. Representatives of the Conservative and Reform movements will communicate with the appellants and the petitioners with the intention of persuading them to agree to such

postponement. In view of the special circumstances, the sensitivity of the issue, and its implications, all parties will ask the courts to rule on the petitions for postponement within 48 hours, so that if such petitions are rejected by the courts, there will be time to complete the legislative procedures.

2. The Prime Minister will establish a seven-member committee, to include one representative each of the Reform Movement and the Conservative Movement. This Committee will formulate a detailed and explicit proposal, based on ideas for a solution raised in meetings with members of the Coalition, or on additional ideas raised in the course of the Committee's work, all in order that registration under the law of population registry and the regulation of the granting of citizenship, including that of converts, shall be done in a manner satisfactory to all parties.

3. The committee will present its recommendations by 12 Av 5757 - Aug. 15, 1997. The Coalition will discuss and approve the Committee's recommendations within three weeks of their submission.

4. If required, the legislative procedures regarding implementation of the Committee's conclusions will commence with the forthcoming opening of the Knesset winter session. The Coalition undertakes to conclude legislation within a period of two months thereafter.

5. In order to remove any doubt, it will be made clear that postponement of the legislative procedures of the Rabbinical Courts Jurisdiction Law will continue, so long as there are no legal procedures concerning conversion issues.



New Board Members of The Jewish Federation of Delaware. l. to r. bottom row: Dr. Michael Samuels, Susan Rohrbacher, Beth Moskowschnoll, Esq., Matthew Denn, Esq. middle row: Leslie Reidel, Lori Barbanel, Ellen Meyer, Esq. top row: Dr. Scott Mackler, Jack Markell. Not pictured: Dr. Steven Bernhardt, Gene Danneman, Dr. Barry Kayne, Stuart Handler, Harriet Ainbinder, Jerome Grossman.

Laying the Foundation for the 21st Century

By **LESLIE NEWMAN**
JFD President

(The following speech was given by Leslie Newman, President of the Jewish Federation of Delaware, on June 19 at the JFD 63rd Annual Meeting.)

President Clinton amply publicized the phrase "building a bridge to the 21st century." Tonight I would ask you to consider a different approach. Rather than creating a connection to our quickly approaching future, I will suggest a different analogy. The Jewish Federation of Delaware is laying a foundation for the 21st century.

Some of you may have had the opportunity to observe the construction of a new home

or office building. It is an arduous task, often beginning with a survey of the land. This past year the Federation completed its own survey. Our survey looked at our people. Jack Ukeles, a nationally known Jewish planner, assessed the Jewish population of Delaware for the first time in over 20 years. The results confirmed what many suspected. We have grown. There are 6,800 Jewish households in Delaware with 13,500 Jewish individuals. 11,900 reside in New Castle County with approximately 55% in the Wilmington area and 45% living in the Greater Newark area. There are remarkable differences between the two population centers. While the Wilmington

Continued on page 4

JFD Guest Speaker Reports on Eastern Europe

By **ELLEN MEYER**
JFD Board Member

David Rappaport, guest speaker at the 63rd Annual Meeting of The Jewish Federation of Delaware, showed slides and presented a compelling report on his recently concluded stay in Donetsk, Ukraine. David, a 1996 magna cum laude graduate of Brown University, will begin Jefferson Medical School this fall. He spent the year between college graduation and his medical studies in Amittim, a program begun this year by the Atlanta Jewish Federation and partially funded by our Federation dollars, to bring American, Canadian and Israeli Jewish young people to isolated Jewish communities to work together to teach Hebrew, Jewish culture and Jewish history and to help form a Jewish community where no formal communal structure

Continued on page 3



Joan Wachstein, incoming president of the Board of Directors of the Kutz Home presents a gift to Sheldon Weinstein, Esq., outgoing Board president. The Home held its annual meeting on June 1st. See story on page 3.

Local Jews Caught in Kotel Turmoil

By **JORDAN SOPINSKY**
Editor of The Jewish Voice

The recent attack on Conservative men and women who were praying together at the Western Wall in Israel during Shavuot called to attention the strained relations between Orthodox and liberal Jews in Israel and the Diaspora. It was reported that the Orthodox Jews (haredim), who view members of liberal Jewish groups as heretics, shouted such epithets as "goyim" and "whores" and threw rocks at the men and women.

The pending (sic) conversion bill in the Knesset has fueled a lot of the vitriol volleyed between the Orthodox and liberal Jewish groups. (On June 22, a little more than a week after Shavuot, representatives of the Reform and Conservative movements in Israel and the Chairman of the Coalition Executive signed an agreement to halt a second and third reading of the bill in the Knesset in addition to ending appeals pending in the Supreme Court. A seven-member committee, containing representatives from the Reform and Conservative movements, has been appointed to report a recommendation to the Coalition by August 15, 1997.)

The violence in Israel hit close to home for two Delaware Jewish families, the Weinstens and the Wortmans. Lynn Weinstein, daughter of Sheldon and Ruth Weinstein, was present at the Wall during the skirmish and

expressed disbelief during an interview with The Jewish Voice. How could "intra-Jewish hatred" surface so soon after Yom HaShoah, a day the nation binds together to remember the Holocaust, she wondered.

"We should ensure that there is always an egalitarian minyan at the Kotel area," she said, referring to her group which is comprised roughly of 10% sabras and 90% American olim. "Let the world see this is legitimate davening and expression of religious commitment."

Mira Wasserman, daughter of Judy Wortman, Executive Vice-President of The Jewish Federation of Delaware, indicated to The Jewish Voice that "Jews are the only religious group who don't have rights to worship at their holy sights in Jerusalem." She said the aim of Kol HaNishama and Mayanot, the Reform and Conservative groups, was "not to antagonize but to pray as they do in their synagogues." Ms. Wasserman, who read Torah at the Shavuot Service is a fifth-year rabbinical student at Hebrew Union College.

"All Federations and religious movements need to get together to bring masses of people to Israel for Shavuot," she said. "Shavuot is a spiritually ripe time because feelings are going strong," she added.

"Liberal Jews just presume that they can't pray the way they do otherwise at the Kotel. They shouldn't."

INSIDE

CALENDAR OF EVENTS.....	19
EDITORIAL	4
MORE NEWS	18
NACHES	18
NATIONAL/INTERNATIONAL.....	6
OBITUARIES	18
OPINION	5
PANIM EL PANIM	2
SYNAGOGUE LIFE	13



PANIM EL PANIM

(Face to Face with JFD People)



Delaware Gratz Graduates 16

The Board of Directors, Administration and Faculty of Delaware Gratz Hebrew High School announce that 16 students have completed five years of Judaic studies and have successfully fulfilled graduation requirements as follows:

With a Jewish Community High School Diploma and a Teacher's Certificate: Elizabeth Cohen, Ashley Lange, Michelle Lazarus, Katie Tanzer.

With a Community Teacher's Certificate: Jesse Fox, Adam Seidel, Brian Weisberg.

With a Jewish Community High School Certificate of Achievement: Eric Brown, Ben Copeland, Alex Grumbacher, Brian Eng, Jake

LaPorte, Dan Medwin, Noah Pevar, Adam Ruben.

With a Certificate of Achievement: Shifra Nerenberg.

These students were honored at a local Graduation Ceremony on Thursday evening, May 22, 1997

and at the Jewish Community High School Graduation exercises in Philadelphia on Sunday, June 8th.

Delaware Gratz is a constituent agency of the Jewish Federation of Delaware.

ERIC MATTHEW BROWN

Concord High School. **Extra-curricular School Activities:** Tennis, Science Olympiad, Madrigals. **Synagogue & Community Activities:** Part time employment at AKSE and Children's Hospital of Philadelphia, Minyonaires, Junior Congregation Leader. **Future Plans:** Plans to attend Northwestern University's Honors Program in Medical Education. **Honors & Awards:** National Merit Commended Scholar, Tennis State Champ, First Chair All-State Chorus. *Parents: Carol and Barry Brown.*

ELIZABETH LEIGH COHEN

Brandywine High School. **Extra-curricular School Activities:** Key Club, Drama Club, Students in Government Club, Art Club, Book Club, S.A.V.E. Club (Environmental Club); **Synagogue & Community Activities:** Part time employment at Big Sky Bread Company, Chapter Treasurer and Regional Sh'lichah of BBYO, Israeli Dancing, JCC Teen Council, Camp Louise; **Future Plans:** Plans to attend Goucher College and major in Linguistics and Psychology or Biology. **Honors & Awards:** National Merit Commended Scholar, Silver Star of Deborah. *Parents: Eileen and Howard Cohen.*

BEN JOSEPH COPELAND

West Chester East High School. **Extra-curricular School Activities:** Editor-in-Chief of Yearbook, Marching Band, Academic Decathlon. **Future Plans:** He would like to work in Electrical Engineering. **Honors & Awards:** Terry Whaller National Honor Society Member, Region VI All-State Band 1995-96, All-State Academic Decathlon Gold Medal Winner. *Parents: Linda and Edward Copeland.*

BRIAN ENG

Concord High School. **Extra-curricular School Activities:** Drama Club, National Honor Society, French Club, French Honor Society, Concord Indoor Performance Ensemble. **Synagogue & Community Activities:** Cadet Aide at Congregation Beth Emeth, President of Beth Emeth Senior Temple Youth, Member of Congregation Beth Emeth Executive Board. **Future Plans:** Plans to attend University of Delaware Honors Program and Major in Chemical Engineering. **Honors & Awards:** National Merit Commended Scholar, Eugene DuPont Scholarship Final-



Seated left to right: Shifra Nerenberg, Michelle Lazarus, Katie Tanzer, Ashley Lange, Elizabeth Cohen. 2nd row left to right: Jesse Fox, Jacob LaPorte, Adam Ruben, Ben Copeland, Eric Brown. 3rd row left to right: Adam Seidel, Noah Pevar, Daniel Medwin, Brian Weisberg, Alexander Grumbacher. Not pictured: Brian Eng.

ist. *Parents: Robin Karol and Jerald Eng.*

Robin Lange and Mark Goldstein.

JESSE ADAM FOX

Strath Haven High School. **Extra-curricular School Activities:** National Mazkirut of Young Judea, Representative for New York City, New Jersey and Eastern Pennsylvania Region Of Young Judea 1996-97, President of Eastern Pennsylvania Region of Young Judea 1996-97, Treasurer of Eastern Pennsylvania Region of Young Judea 1995-96. **Future Plans:** He plans on taking part in Young Judea Year course which is 10 months of studying and living in Israel after high school. *Parents: Nili and Robert Fox.*

ALEXANDER C. GRUMBACHER

Mount Pleasant High School. **Extra-curricular School Activities:** Drama, Jazz Band, Secretary of National Honor Society. **Synagogue & Community Activities:** Chevra Kadisha, Former Treasurer of B.E.S.T.Y., Ba'al Tekiah at Congregation Beth Emeth. **Future Plans:** He plans to attend the University of Delaware. *Parents: Suzy and Peter Grumbacher.*

ASHLEY SOMMER LANGE

Brandywine High School. **Extra-curricular School Activities:** Drama Club, Stage Crew, Art Club, National Art Honor Society. **Synagogue & Community Activities:** Community Service with National Art Honor Society. **Future Plans:** She plans on a career in Psychiatry. *Parents:*

JACOB R. LAPORTE

Brandywine High School. **Extra-curricular School Activities:** Football, LaCross, Key Club, National Honor Society. **Synagogue & Community Activities:** Volunteer at A.I. DuPont Institute. **Future Plans:** He plans to attend the University of Delaware Honors Program and major in Biochemistry. **Honors & Awards:** Delegate to 1996 American Legion Boys' State, State Finalist for Wendy's Heisman Award for Athlete/Scholars, Bronze Good Citizenship Medal from Sons of the American Revolution. *Parents: Maureen and Bruce LaPorte.*

MICHELLE D. LAZARUS

Brandywine High School. **Extra-curricular School Activities:** Volleyball, Swimming, Students in Government. **Synagogue & Community Activities:** J.C.C. Lifeguard & Control Desk Operator, President of BBYO Chapter, J.C.C. Teen Council, Israeli Dancing, Summer in Israel participant, BBYO Kallah. **Future Plans:** She plans on attending the University of Delaware and is interested in the Biological Sciences and in Pathology. **Honors & Awards:** Silver Star of Deborah from BBYO. *Parent: Bernie Lazarus.*

DANIEL BEN MEDWIN

Mount Pleasant High School. **Extra-curricular School Activi-**

ties: Lacrosse, Drama Club, Soccer, Math League, National Honor Society, Contributor to the Newspaper. **Synagogue & Community Activities:** Tutor/Substitute Teacher at Congregation Beth Emeth, BethEmeth Senior Temple Youth, Religious & Cultural Vice President for North American Federation of Temple Youth of Mid Atlantic Region. **Future Plans:** He plans on attending Brandeis University to major in Judaic Studies and Computer Science and become a Rabbi. **Honors & Awards:** Dartmouth Book Award, National Honor Society, Principal's Leadership Award, Who's Who in American High School Students, Merit Scholar Semi-Finalist, Representative to Channel 2's "Voices of Tomorrow." *Parents: Michele and Steve Medwin.*

SHIFRA ELLY NERENBERG

Brandywine High School. **Extra-curricular School Activities:** Drama Club, National Honor Society, Students in Government, BHS Line (assistant editor for newspaper and publishing editor for the Literary Magazine). **Synagogue & Community Activities:** Adas Kodesh, BBYO Vice President for Programming. **Future Plans:** She plans on attending Brandeis University and majoring in the Arts and Sciences. **Honors & Awards:** National Honor Society Top 20% of her class. *Parent: Faye Harris.*

NOAH AARON PEVAR

Extra-Curricular School Activities: Cross Country Runner. **Synagogue & Community Activities:** Works for his Father, Confirmation Class. **Future Plans:** He plans on attending either Beloit, Earlham, Lcoming, or Widener. His interests are in English, History, Philosophy and Comparative Religion. He would like to become a writer, editor or publisher. **Honors & Awards:** School Letter in Team Cross-Country. *Parents: Susan and Marc Pevar.*

ADAM JEREMY RUBEN

Concord High School. **Extra-Curricular Activities:** Ecology Club, Newspaper & Literary Magazine & Yearbook, Math League, Drama Activities, Science Olympiad, Marching Band, Wind Ensemble and All-District Band, Academic Bowl, National Honor Society, French Club and French National Honor Society. **Synagogue & Community Activities:** Read-Aloud Delaware, Delaware Humane Association, Kutz Home, B.E.S.T.Y. **Future**

Plans: He is planning on a double major in Chemical Engineering and Creative Writing. **Honors & Awards:** National Merit Semi-Finalist, AP Scholar Award, Volunteer Spotlight Award, DCTM Math League Awards, 1996 Princeton Poetry Contest, Apprentice Writer Award, Brown University Book Award, Oral Languages Competition Award, DuPont Writing Award, National Library of Poetry Award, and many other awards. *Parents: Regina and Jeffrey Ruben.*

ADAM MATTHEW SEIDEL

Mount Pleasant High School. **Extra-curricular School Activities:** Newspaper and its Editor, Yearbook, Foreign Language Club, National Honor Society, Math League, Academic Bowl, Tennis, Y.A.B.A. Bowling League. **Synagogue & Community Activities:** Minyonaires (President), Intern at Jewish Voice, Aide at AKSE Hebrew School. **Future Plans:** He plans on attending the University of Delaware Honors Program with a possible major in Business or Psychology. **Honors and Awards:** Who's Who of American High School Students. *Parents: Dianne and Jeffrey Seidel.*

KATIE TANZER

Brandywine High School. **Extra-curricular School Activities:** BHS Varsity Cheerleader Captain, National Honor Society, Spanish Club, BHS Tennis, BHS Line Assistant Editor, Ads Coordinator and Reporter. **Synagogue & Community Activities:** Chapter Secretary and Regional Vice President for Membership of BBYO. **Future Plans:** She will be attending Binghamton University. **Honors & Awards:** Delaware Girls' State Top 10% of her Class. *Parents: Hinda and Dan Tanzer.*

BRIAN MICHAEL WEISBERG

The Charter School of Wilmington. **Extra-curricular School Activities:** Key Club President, Computer Club President, Math League, Science Olympiad President, Ski Club, Mock Trial, Model U.N., Chess Club. **Synagogue & Community Activities:** Computer Consultant, BBYO. **Future Plans:** He hopes to attend M.I.T. and concentrate in Computer Information Systems. **Honors & Awards:** State Winner National Engineering Design Challenge, National Merit Commended Scholar. *Parents: Loretta and Jay Weisberg.*



PANIM EL PANIM
(Face to Face with JFD People)



June JFD Board Highlights

1. Rabbi Larry Malinger presented the D'Var Torah.
2. John Elzufon, chair of an ad hoc committee composed of synagogue and JFD representatives, presented a resolution regarding support for all branches of Judaism in Israel. The resolution (see supporting article) passes unanimously.
3. Rabbi Malinger presented a report for the Israel Scholarship Committee. They distributed \$15,000 to 12 teens and made recommendations for changes in the process.
4. Steve Dombchik, chair of the Endowment Committee presented recommendations for scholarships to Etai Belinky, Dan Green and Adam Hebbel. These were approved unanimously. He reported that the Endowment Board approved allocations to support the Community Outreach worker for the Greater Newark area and Dover, missions to Israel as part of a community leadership program and support for a professional development program available to community professionals in conjunction with the University of PA School of Social Work. These were also approved. Finally, he reported that funds were disbursed from three philanthropic funds since the last meeting.
5. Joan Spiegelman, co-chair of Allocations Committee, presented the recommendations of the report. The committee had less to allocate than at the end of 1996 and more requests than available dollars. The recommendations were approved unanimously. The committee will meet again in January when the final campaign figure is available. Board members were encouraged to complete their 1997 cards. Leslie Newman reported that our community has been asked to raise an additional \$15,000, as our fair share, to feed poor elderly individuals who continue to live in the former Soviet Union. This will be assessed when the final campaign dollars are available.
6. The audit was distributed. It will be discussed at a short meeting prior to the June 19 annual meeting.
7. Judy Wortman, Executive Vice President, announced staff changes: Rhonda Foreman is moving to New Jersey in June and will be replaced by Magda Sarewesky; Lelaine Nemser will be leaving at the end of the summer to join her husband in business and enjoy her role as future grandmother. We are interviewing for her replacement now. Both were thanked and wished well in their new roles.
8. Announcements: The annual meeting will be held June 19 at the JCC. David Rappaport is the featured speaker.

Accepting Challenges

By **JUDY WORTMAN**
Executive VP, JFD
(The following D'var Torah was given by Judy Wortman, Executive Vice-President of The Jewish Federation of Delaware, on June 19 at the JFD 63rd Annual Meeting.)

Just one week ago we celebrated Shavuot, the holiday commemorating the passing of the Torah from God to Moses to Bnai Yisrael. The Torah reading on the first day includes the Ten Commandments and it is our covenantal obligation to pass these laws as well as our tradition from generation to generation, l'dor va dor. For more than three thousand years in countries all over the world, this covenant with God has been honored. Now, however, we read gloom and doom stories about the perils of assimilation and intermarriage. Even in the New York Times magazine issue

preceding Shavuot we read about the death of the American Jewish community.

While I am not one to minimize the challenges presented to us with increasing numbers of children marrying non-Jews, I believe that we have said enough - "al chet's" - and it is time to accept those challenges and create a vibrant American Judaism that will embrace our children, their partners, and their children.

I would like to share the very joyous experiences I shared with youth of our community in just this past week. The evening before Shavuot I had the honor of addressing the graduates of Albert Einstein Academy at which time we witnessed the student's ability to conduct t'fillot and their mastery of Jewish and general studies. On Shavuot I celebrated with Beth Shalom confirmands who also

demonstrated their davening and Torah reading skills. I was very moved by their individual creative expressions of the importance of the synagogue and volunteer service experiences. This class commissioned a magnificent painting by Riva Brown depicting Ezekial's vision, the Haftarah that they chanted that day as a gift to the synagogue. In order to raise the money, they rented themselves to the congregants for babysitting, lawn work, etc.

At the same time in Jerusalem an egalitarian Shavuot service sponsored by three synagogues - a Reform, Conservative and liberal Orthodox was held in the Kotel Plaza. Among the participants were Lynn Weinstein, Sheldon and Ruth's daughter and my daughter, Mira Wasserman who was reading Torah. This group of 75 young Jews was expressing their commit-

ment in the face of hostility and attacks from 1000 haredim-ultra-orthodox men.

This past Sunday I was honored to attend the traditional Jewish wedding of Dana Ger, daughter of Ruth Ann and Errol.

As I thought about a d'var Torah for tonight, words of Torah appropriate as we complete one year and begin the next, I could think of nothing more appropriate than celebrating our children including our guest speaker for tonight, David Rappaport, who have made choices to accept the Torah we have bequeathed to them. In the course of just this one week we have had at least these five occasions to kvell. Let us continue to work together so that we can touch even more of our children and provide more opportunities for them to learn and live their Judaism.



David Rappaport

Rappaport

(continued from page 1)

exists. When David first arrived, he went to Babi Yar. With great emotion he spoke of his visit to that site and how upsetting it was that there was barely any reference to the mass murders of innocent Jews. Peering down into the ravine where so many bodies were thrown during the massacre, David felt an eerie sadness. Little did he realize then that it would foreshad-

(continued on page 19)



Suzanne Grant, previous award winner, presents the Gilbert Spiegel Young Leadership Award to Rick Geisenberger. Rick currently serves as a member of the Young Leadership Development Alliance and holds the position of treasurer on the executive committee of the JFD.

Kutz Home Holds Annual Meeting

Joan Wachstein Elected President Re-Dedication Slated for September 21

On Sunday, June 1 more than 100 friends, family members, staff and residents gathered in the new lobby of the Milton and Hattie Kutz Home for the Home's Annual Meeting. They were welcomed by Sheldon Weinstein, Esq., President of the Board of Directors. He praised the Board of Directors, the Kutz Home staff, the Auxiliary, the Home's volunteers, the Jewish Federation of Delaware, and all the community supporters who have made the Home a state-of-the-art facility. Board President Weinstein noted that at the end of the construction there will be a substantial surplus of capital, thereby allowing a capital maintenance fund to be established. Additionally, a short-and long-range strategic capital planning committee will be formed, Mr. Weinstein said. "We are privileged to make a difference. Our satisfaction comes from caring."

Rabbi Sanford Dressin, of Adas Kodesch Shel Emeth, whose parents reside at the Kutz Home, gave the invocation. He said, "A society's quality is judged by the way it treats its seniors. Here we have an

opportunity to see this."

Eileen Connor, CPA, gave the report of the Nominating Committee. Norman Pernick was nominated for a one year term; Stephen Potter, Esq. for a two year term; Frederick Alexander, Esq.,

Elliott Golinkoff, Marion Jacobs, Craig Lewis, Ethel Parsons, Barry Schlecker, and Aaron Shapiro, Esq. for three year terms. The nominees for officers were: Joan Wachstein for President; Frederick Alexander, Esq., Elliott Golinkoff and Benitz Zahn for Vice Presidents; Howard Hoffman, Ph.D. for Secretary; and Joseph Nicholson, Esq. for Treasurer.

Leslie Newman, President of the Jewish Federation of Delaware, announced the Federation appointments.

The Auxiliary report was given by President Miriam Edell. She said, "This has been a very exciting year. The Auxiliary purchased a new van, contributed \$4,000 to the Home's activity programs and will purchase new outdoor furniture and awnings with the proceeds from the Auxiliary Luncheon."

Staff anniversary awards were presented to: Martha Mendenhall (5 years), Lucille Kinnard (5 years), Lois Ward, R.N. (10 years), Joyce Valentine, L.P.N. (15 years), Theresa Woerner (20 years), and Emma Smith (35 years).

Ruby Turner, who has been a staff member since 1985, was selected Employee of the Year.

Volunteer awards were presented to those many residents who assisted with the Home's activity programs. Karen Friedman, Executive Director, thanked the staff and the Board of Directors for their efforts throughout the year.

Joan Wachstein, incoming President, presented a leaf for the Home's Tree of Love in honor of Sheldon Weinstein. "I am honored to serve as President," she said, "and hope to follow in the footsteps of my distinguished predecessors."

The Home's re-dedication event is scheduled for September 21, 1997. An elegant celebration is being planned by the Rededication Committee, chaired by Arlene Simon.



Kibbitzing at Kutz

Burt Mittelman shares a laugh with his mother, Eva Mittelman, at Kutz Home annual meeting.

EDITORIAL

Resolution for Jewish Unity

This issue of *The Jewish Voice* features the community's concern about Jewish unity and reaction to intra-Jewish divisiveness in Israel. Since the assassination of Prime Minister Yitzhak Rabin, tensions between Orthodox and non-Orthodox factions have exacerbated. Like other North American Jewish communities, leaders here have been following the events in Israel - particularly proposed legislation to amend the Law of Return and to change current laws regarding recognition of conversions. In addition, synagogue leaders have expressed concerns about insufficient allocations by the Jewish Agency for Israel (JAFI) for programs under Modern Orthodox, Conservative, and Reform auspices. As a result, Leslie Newman, Federation President, appointed a

special committee chaired by John A. Elzufon, with representation from Federation, Adas Kodesch Shel Emeth Congregation, Temple Beth El, Congregation Beth Shalom and Congregation Beth Shalom to develop a response and action plan. The Resolution on this page was drafted by the committee, approved by the Congregations, and approved by the Federation Board of Directors earlier this month.

We salute the Committee, the Congregations and Federation for working together for the sake of *Klal Yisrael* in order to pass this Resolution. It is our hope that the entire Jewish community stands with its leadership in support of the principles outlined therein.

Resolution of The Jewish Federation of Delaware

The relationship between the Jewish people and God, however it is defined and interpreted, has been with our people as a whole and not any one segment. Jewish unity has therefore always been a matter of sacred trust.

The history of the Jews as a people and of Judaism as a religion has never been static. The fact that there are differing opinions on the nature of Judaism is not new.

Unfortunately, today there are efforts in Israel to turn philosophical differences between various segments of Judaism into grounds to delegitimize non-Orthodox Jewry - which represents the largest segment of Jewry in North America. Sadly, this has been followed by personal attacks on Israel's Rabbinate. In addition, extremely divisive comments have been made by the fringe group Union of Orthodox Rabbis (Agudath HaRabbonim). We condemn all of these actions.

It is ironic that the Jewish people, who have been subjected to external religious discrimination and persecution for over 2000 years now find today's gravest threat to be ourselves. It is more than ironic; it is frightening.

We are guided, therefore, not by the voices of divisiveness, intolerance and disrespect

but by the wisdom of Israel's first Chief Rabbi, A.Y. Kook:

"In a world that is filled with so much *sinat chinam*, hatred for the Jews with no reason, we must counteract it with *ahavat chinam*, love for every Jew even when there is no reason."

The Jewish Federation of Delaware, therefore, resolves:

"To oppose any effort, whether in Israel or Diaspora Jewry, to delegitimize any segment of the world Jewish community.

To reaffirm the JFD's Board's December, 1996 confirmation of the 1996 Council of Jewish Federation's resolution urging the government of Israel to 'abstain from amending legislation or passing new legislation which would change the current situation regarding recognition of conversions' and not to change 'any aspect of the Law of Return'.

To oppose any effort, action and/or statement that has the potential to form a wedge between Israel and Diaspora Jewry.

To support through all reasonable steps available to the JFD the efforts by the CJF and UJA to double campaign allocations to Reform, Conservative and modern Orthodox movements in Israel. This support is to be proactive in form.

Laying the Foundation

(continued from page 1)

community is stable in size, the Greater Newark area is developing rapidly. It is composed of a younger population, with a greater number of children under the age of 9. Nearly double the number living in Wilmington. The Greater Newark area also has a higher intermarriage rate. These are just a few of the facts.

In addition to surveying the land, the architect or contractor also requires an understanding of the needs of the new building owner. If they are a first time owner, it is useful to determine what they think they would require. If they have owned something before it is useful to critique what they would like to replicate and what they would like to do differently. The Jewish Federation is embarking on this process in many ways. It will be reaching out to those in the Greater

Newark area as well as Dover through a community outreach worker. This new staff person, funded by generous donations from the Endowment Fund, Kutz Foundation and private contributions, will work in these communities to reach those who have been unaffiliated. Staff will also work with these communities to determine program and service needs for the already identified population. It is hoped that we will see an increase in meaningful programming in the next few years.

Federation is also working to assess the needs of the Wilmington community. Working collaboratively with the agencies, JFD is coordinating a planning process that will evaluate program needs for today and for the beginning of the 21st century. These will be translated into space needs. We are hopeful that this information will be ready by the end of 1997 so that a space planner and architect can be brought to help us assess our facilities based upon the needs of the community. An assessment of what is would not be complete without a thorough examination of our current land and buildings. While the Kutz Home has recently completed a successful capital campaign to bring it to the next century, the Garden of Eden Complex is nearly thirty years old and requires renovation of its heating and air conditioning, roof replacement and parking lot lighting and paving improvements, to name a few. Our community has also accumulated debt to build our family campus, replace some of our roofs and fix our pool. While the amount of allocation dollars allotted to capital maintenance and debt reduction has increased in recent years, we have much left to do. All of this must be examined and planned for as well.

Once the design is in place the rocks and other unnecessary litter must be removed. However, we must be careful to leave existing landscape in place whenever possible. Development built around trees has a different look from a bulldozed lot that is newly planted. This may be harder to do as it requires time, resources and much effort, often referred to as blood, sweat and tears. But the result will be superior and generations to come will admire the foresight and planning. We must also establish good relationships with our neighbors, those living next door and beyond. The Federation, has been working hard on both a lay and professional level to continue to strengthen relations with our next door neighbors, specifically the agencies and synagogues in our State. Dialogue has been ongoing and reflects a commitment to our Jewish community. We also reach out to "our neighborhood" through the activities under the Jewish Community Relations Committee. Our presence in the Community Services Building will surely enhance those relationships.

It is now time to pour the foundation. This foundation, like all the steps that preceded it, is critical. Will our base be solid? Will the foundation be strong enough to support all that needs to happen today and in the future? Without the people and their resources our community's foundation is weak. Without cooperation and community planning our position is shaky. It is our job to lay the foundation so that the future leadership can build the walls. It is our job to work so that the land will appear undisturbed and natural in years to come. It is our job to do such a good job that it looks easy to the untrained eye.

I thank all of you, both staff and lay, who have shared your blood sweat and tears, whether they are effort, though or financial. I encourage us as a community to continue this process so that our foundation is strong as we head to the 21st century.

To revisit the June, 1997 overseas allocation decision at the January, 1998 Allocation Meeting if the efforts of CJF and UJA have not satisfactorily resolved the issue.

To make it known to Delaware's Jewish community that the money that is currently allocated to overseas is mainly for social services.

To embrace 'Klal Yisroel and Ahavat Yisroel', the notion of Jewish peoplehood and the love of that peoplehood.

To urge all Delaware Jews to continue to fully support the annual UJA/Federation campaign.

To cause this resolution to be published and made known to Delaware's Jewish Community."

The Jewish Federation of Delaware notes that the following action steps may be taken:

Let your feelings be known to the appropriate representatives of Israel, UJA and CJF.

Israeli Ambassador: Ambassador Eliyahu Ben Elissar, 3513 International Dr. N.W., Washington, D.C. 20008, 202-364-5500

Consul General of Israel for mid-Atlantic Region: Consul Gideon Samet, 230 South 15th Street, Suite 8, Philadelphia, PA 19102, 215-546-5556, fax: 215-545-3986

In Israel fax the following influential people:

P.M. Benjamin Netanyahu, 011 972 2 530 3896

Natan Sharansky, 011 972 2 624 3738

Tzachi Henegbi, 011 972 2 586 9472

Yuli Edelstein, 011 972 2 561 8138

Bobby Brown, (PMO) 011 972 2 651 3950

You may also contact the following organizations:

United Synagogue for Conservative Judaism, 155 Fifth Avenue, New York, NY 10010, 212-533-7800

Union of American Hebrew Congregations, 838 Fifth Avenue, New York, NY 10021, 212-249-0100

Union of Orthodox Jewish Congregations of America, 45 West 36th Street, New York, NY 10018, 212-563-4000

United Jewish Appeal-Northeast Region, 111 Kinderkamack Road, River Edge, N.J. 07661, 201-489-2700, fax: 201-489-3136

Jewish Federation of Delaware, P.O. Box 2193, Wilmington, DE 19899-2193, 427-2100, fax: 427-2438, e-mail: Delawarejfd@jon.cjfnj.org



Published semimonthly, and monthly in July and August, by the Jewish Federation of Delaware.

Jordan Sopinsky, **Editor**

Frances Klein, **Advertising Manager**

Judy Wortman, **Executive Vice-President, JFD**

Daniel H. Weintraub, Esq., **Publisher's Representative**

Steve Cohen, **Entertainment Reporter**

Priscilla Siegal, **Community Reporter**

Editorial Committee:

Connie Kreshool, **Chair**; Marilyn Cooper, Matt Denn, Barbara S. Keil, Ellen S. Meyer, Bobbie Tomases, Karen Venezky.

Business Committee:

Suzanne Grant, **Chair**; Mark Levitt, David Rosenblatt, Dale Rosenthal, Michael Schwartz, Lawrence I. Zut.

Editorial opinions expressed in this newspaper are those of the newspaper and not those of any individual or other organization. Signed editorials and letters do not represent the view of the newspaper, but rather express the view of the writer. No material will be accepted by *The Jewish Voice* which is considered against the best interests of the Jewish community. *The Jewish Voice* does not guarantee the kashruth of any of its advertisers. Printed material and video tapes sold by our advertisers have not been reviewed by the *Jewish Voice*, nor are they endorsed in any way by *The Jewish Voice*.

Member of the American Jewish Press Association and Jewish Telegraphic Agency.
©1996 *The Jewish Voice* Printed by Dover Post Company



Periodicals postage paid for *The Jewish Voice* (USPS-704160) at Wilmington, Delaware. Subscription price: \$10.00. Circulation: 3,200. Mailed to subscribers and contributors to the Jewish Federation of Delaware. POSTMASTER: Send address changes to *The Jewish Voice*, 100 W. 10th St., Wilmington, DE 19801. (302) 427-2100. The FAX number of *The Jewish Voice* is (302) 427-2438.

E-Mail: jewishvoice@aol.com

CORRECTION: Mollie Makar, not Millie, is the mother of Jonathan Makar. Hinda Tanzer, not Linda, is the mother of Matt Tanzer. These errors were printed in the June 6, 1997 issue of *The Jewish Voice*. *The Jewish Voice* regrets the errors.

OPINION

Yiddish Is Back... Efsher (Maybe)

By IRV KAUFMAN

Special to The Jewish Voice

Too Bad! Too bad that the PAKN TREGER, the magazine of the National Yiddish Book Center wasn't available three or four decades ago. It might have made a difference.

But, of course, Aaron Lansky, the young man with that extraordinary vision and the determination to save Yiddish Books, the Yiddish language and the culture that sustained pre-Hitler European Jewry, had yet to be born. As a college student Lansky had a remarkable idea about the establishment of a National Yiddish Book Center, one that would save the thousands of Yiddish books languishing in basements, attics and garages to be eventually discarded by a non-Yiddish speaking younger generation. Once his mission was publicized, Zamlers (collectors) from all over the country sent him tens of thousands of Yiddish books.

An abandoned school building was provided him for his books by the town of Amherst, Massachusetts. The school was quickly filled, and in the short space of less than two decades his private vision had become an established institution. Financial support came, and in the Summer of 1997 a newly constructed National Yiddish Book Center will be dedicated and open for the business of creating a world center for Yiddish language and culture.

The quarterly magazine of the National Yiddish Book Center, the PAKN TREGER (a person who traveled from town to town in Eastern Europe carrying news and stories of the outside world) is a delight to read and to look at. What makes this a distinguished piece of reading material for Jewish readers is that it focuses on Yiddish, both the language and the culture. Not since the English edition of the weekly FORWARD have we been feasted with the imaginative works and yearnings of those Jews, past and present, who created and are creating the images, the words, the rhythms, the interior landscapes of Jewish Life.

The Winter edition of the PAKN TREGER contains the full text of a controversial play by Sholem Asch that is being readied for production, a literary portrait of the Soviet writer Isaac Babel who was killed by Stalin, a review of children's books with Jewish themes, a return to the Bintl Brief of Jewish Forward fame, and a review of Herman Yablokoff's autobiography about the Jewish Theater. Reviews of two books concerning those Jews who having survived the

Holocaust returned to those lands and communities from which they were "gutted" provides a chilling answer to the question, "Why are they there?" One returnee declares, "If they don't want me, they have to have me. If they don't want Jews, then I should be here."

phalanx of Jewish writers and artists may find those shtetl years a usable Jewish past for their current creative endeavors.

Each edition of this quarterly English pub-

crassness of American pop culture. If those Jewish cultural images seem exhausted, it may be because they are. For too long now they have represented as poorly and tarnished our expectations about Jewish life in America. It is time for a change. We need the cultural uplift that the regeneration of interest in Yiddish has and hopefully will continue to stimulate.

If the uplift given us by a re-energized Yiddishkeit mediates our demoralization about Jewish culture, it still falls short of being a cure for the ailments of American Jewry. There the crisis is too deep, the vision too blurred, the will too shallow; and Yiddish is more like Tevye then like the IDF in its capability to fight and win that battle.

Sensible Jews, on hearing of the revival of Yiddish in the Universities, at literary conferences and in a variety of Yiddish publications and interest groups will ask "Why?" How redemptive can Yiddish be when it was the first thing to succumb when new immigrants faced the integrative pressures of American society?

Can the language of a troubled people become a vehicle of expression for the comfortable, acculturated Jews of America? How can Yiddish coexist with the other languages of Jewish life - Hebrew and English? Or will the rivalries between them become a replay of past frictions and ideological culture wars?

Finally, are there enough committed, culturally, and artistically skilled young Jews, with faith in a "Yiddishkeit" they

never knew, willing to stake their creative imaginations in this curious revival of a forgotten and often reviled language?

Each of these questions reflects on the nature of our current community with its partisan stresses, fading loyalties and waning faith. Restoring Yiddish to greater prominence, important as it is, is a side show to the larger unfolding drama of our survival - our collective continuity as a people on these American shores.

To survive is only to do so as a distinctive body of people with a distinctive way of life. Whether it is possible for us to recreate a content of religious and cultural distinctiveness, that we can transmit to future generations, is the question for the twenty-first century. Within that recreation, and amongst its many glories, we will undoubtedly find the joys of a renaissance Yiddish.

(Editor's note: Readers interested in learning more about the National Yiddish Book Center or the Pakn Treger can write to The National Yiddish Book Center, Harry and Jeanette Weinberg Building, Amherst, Ma. 01002-3375)

(Irv Kaufman is a former member of The Jewish Voice Editorial Committee.)

Yiddish Book Center Enters New Era with Home of Its Own

By DEBRA NUSSBAUM COHEN

NEW YORK (JTA) - The National Yiddish Book Center has finally found a home, but in a setting about as far from the shietls and cities where its books were penned as could be.

The June 15 dedication of a new, \$8 million facility in the bucolic New England college town of Amherst, Mass., marked a new era for the center.

In 1980, Aaron Lansky, then a graduate student in Eastern European studies at McGill University, founded the center to save the Yiddish-language books that he saw being thrown - literally - on garbage heaps.

Lansky realized that something precious was being destroyed as the people who read and collected Yiddish books passed away and their children and grandchildren, having no use for entire libraries in a language they neither spoke nor read, threw them out.

He expected to devote two years to his rescue effort. At the time, experts estimated that there were a total of 70,000 Yiddish volumes in the entire country.

Lansky put the word out to the ten-nascent contemporary network of young Yiddishists, soon the calls started coming in. The phone would ring and Lansky would set off in his battered van - even in the middle of the night - to collect books from the dumpster where they had been discarded or the basement where they sat moldering in boxes.

Within six months Lansky and other volunteers saved 70,000 books from incineration, storing them in an unheated factory loft. For years, the books were stored wherever Lansky could find a cheap room; for awhile in an old spice warehouse, then in a defunct schoolhouse, later in an empty roller rink.

Today the National Yiddish Book Center owns more than 1.3 million volumes of Yiddish literature. Another 1,000 pour in each week from people who hope that their beloved, now-unused, volumes, will find a home and a future.

The Spring edition presents I.B. Singer in a new light from a newly released biography. A wonderfully evocative photographic exhibit, "A Shtetl 1931" brings with it a reconsideration of what shtetl life was like prior to the Holocaust. The interview between David Roskies, Professor of Jewish Literature at

"We want to give Yiddish an address, and provide people a place to come to understand that Jewish culture is not lachrymose, not sentimental, not about the Holocaust, but to understand it on its own terms," said Lansky in a telephone interview. "It was chutzpadik of us to launch a \$7 million campaign three years ago when the largest gift we'd ever gotten until then was \$10,000, but the response was astonishing. "Our own members, over 9,300 individual contributors, sent in \$2 million in contributions," Lansky said, ranging in size from \$2 to \$1 million.

The center has 30,000 members who contribute at least \$36 a year, Lansky said, making it one of the largest Jewish cultural organizations in the country.

Much of the collection, and all of the 32 staff members, are settled into their new facility on the campus of Hampshire College in Amherst. The building's 37,000 square feet house a state-of-the-art auditorium, amphitheater, seminar rooms and a kosher dairy kitchen.

Nine thousand square feet of exhibit space will be devoted to showing collections of art and artifacts, and open to the public in September.

Lansky expects 50,000 visitors in its first year alone to come to the new center, which sits tucked into an orchard of apple trees at the foot of the Holyoke range of mountains.

The 40,000 pounds of apples the orchard produces each year will be donated to a local food bank, he said.

The center will also run programs on various aspects of Yiddish culture year-round and continue to provide literature to the burgeoning number of Yiddish research collections.

When Lansky began his work, only six Yiddish language research collections existed at university and other libraries. Today there are more than 400 universities and national libraries with significant collections of Yiddish literature, located from Washington D.C., to Japan and China.

As long as they are there, Lansky said, there will be people studying Yiddish who can ensure that the 1,000-year-old mother tongue of European Jewish culture finds preservation - and even, possibly, a new life.

lication is filled with Yiddish, Yiddish to savor and Yiddish long forgotten but recaptured

once seen on the printed page, Yiddish in a script deliciously reminiscent of funny notebooks with the broad and narrow spaces drawn across the pages on which one write Yiddish letters and words. It recalls that moment in Jewish time when Yiddish was the "mame loshn" - the mother language.

Can the language of a troubled people become a vehicle of expression for the comfortable, acculturated Jews of America?

the Jewish Theological Seminary, and Allen Hoffman, author of the novel Small Worlds, generates interest in how shtetl life informed and enriched both the secular and the sacred lives of Jews of that period. Their discussion also raises the possibility that the current

If it only nourished the heart and fostered memories the PAKN TREGER would be worthy of a DAYENU. It does more than that especially for those who sense the fatigue of most of what currently circulates as Jewish culture, most pointedly so when it mimics the

NATIONAL • INTERNATIONAL

Business Leaders: Peace Process Will Continue Despite Standstill

MILWAUKEE – A survey of American business and professional leaders shows that three out of four expect the Israeli-Palestinian peace process to continue, despite the current standstill in negotiations, according to the Committee for Economic Growth of Israel (CEGI).

Elmer L. Winter, who serves as CEGI chairman, says that an

inquiry of 85 top executives conducted by his group also found that four out of five believe the American public wants the United States government to continue to play a key role in trying to bring about peace between Israel and the Palestinians.

Mr. Winter is an industrialist who founded and served as long-time president of Manpower, Inc., the

world's largest temporary help agency, which is based here. CEGI is an association of American and Israeli business executives working to advance trade and investment between the U.S. and Israel.

By a two-to-one majority, the business leaders surveyed felt that the Palestinians are winning a public relations battle with Israel, and that this development, in turn, is leading to a lessening of interest in Israel on the part of American Jews. The CEGI survey disclosed that almost nine out of ten respondents also believe the current conflict between Orthodox, Conservative and Reform Jews over the status of non-Orthodox branches of Judaism in Israel "is serious and is causing some American Jews to turn away from Israel."

Mr. Winter attributed Israel's public relations travails in good part to uneven media reporting, which, he asserted, overemphasizes Israeli problems but neglects to cite Palestinian failures to adhere to the Oslo accords. "The lack of depth and objectivity when it comes to depicting Israel confuses the public and distorts the public view of the peace process," he said. "It precipitates a slippage of interest in Israel in the U.S. This

leads to a reluctance among some American corporations to open factories, a decline of concern in Israel's welfare among some American Jews and a continuing stalemate in the peace process."

However, Mr. Winter said that despite stalled negotiations, firms like Smith Barney, Merrill Lynch and Siemens are continuing to expand their investment and operations in Israel.

The CEGI chairman said that what is now needed "is for the American Jewish community to recognize that Israel's future political decisions must be resolved by the Israelis themselves and their duly elected representatives. We must assure the Israelis that we will not permit a disconnect in our relations with their country and that we will work together to build an even stronger and more secure Israel."

Israel Reacts to Denver Summit Resolution

(ISRAEL) – Israel has spoken firmly against a resolution passed at the summit meeting of the heads of major industrial nations this weekend that called upon Israel and the Palestinians not to take unilateral action that will influence permanent status talks, which "Big Eight" leaders say face a crisis, HA'ARETZ reported.

"We are amazed by the one-sided way in which the resolution views the Middle East. We feel that it ignores the violence and threats of violence that are initiated by

Palestinian leaders. This is not the correct way to promote the cause of peace," said David Bar Ilan, head of the Policy and Information Department in the Prime Minister's Office.

Bar Ilan took umbrage at the fact that the presidents and prime ministers did not mention the recent murder of Arab real estate dealers who sell land to Jews. He said that the resolution was directed against both Israeli settlements and construction in Har Homa.

INVITATIONS BY FUZZIEZ

Invitations, Favors, Band Give-A-Ways and More:
Bar/Bat Mitzvah, Sweet 16, Wedding, Special Occasion

SUMMER SIZZLER SPECIAL:
Buy 1 Dozen Neon Sunglasses, Get 1 Dozen FREE!

New Books have just arrived
Special Selection of invitations **AT COST!**
We will better any competitor's price by 5%!

Computer Calligraphy
starting at \$0.75 per envelope
FREE Beverage napkins with new orders

All specials with this ad only. Offer expires 9/1/97

PHONE: 215-364-5232



**HE'S NOT
REFORM,
CONSERVATIVE
OR ORTHODOX.

HE'S POOR
AND HUNGRY.**

You can give him a label, or you can give him hope. Wherever you stand on the debate about religion in Israel, he's not the enemy. Don't make your Federation and UJA the battlefield. Your Annual Campaign gift is still the best way to rescue the imperiled, care for the vulnerable and strengthen the entire Jewish community. That's what your help does, every single day of the year, for anyone who needs it. Without labels.

UJA UNITED JEWISH APPEAL
1.800.966.4UJA www.uja.org

Buying a sign from somebody who does them on the side?



For almost 60 years, signs have been our only business. We've designed, built, installed and maintained them for companies great and small...in Delaware, Maryland, New Jersey and Pennsylvania. If you want a quality sign, hung right side up, don't go to a part-timer. Come to us, for a handsome, durable, image-building Tupp sign!

Call 322-1600

TUPP SIGNS

457 E. New Churchman's Rd.
New Castle, DE 19720

NATIONAL • INTERNATIONAL

RFRA Downed By Supreme Court

Law Seen As Unconstitutional

By DANIEL KURTZMAN
 WASHINGTON, June 25 (JTA) — The U.S. Supreme Court's decision has decided to strike down as unconstitutional a 1993 federal law aimed at curbing governmental interference in religious practice.

The justices, in a 6-3 decision, said Congress usurped power from state and local governments — and from the Supreme Court itself — when it enacted the Religious Freedom Restoration Act, commonly known as RFRA.

"We take comfort in the fact that, in light of the decision in the Agostini case, the court does appreciate the role of religion in American society and that it apparently viewed" the RFRA case "as one strictly confined to the separation of powers in our federal sys-

tem," said Nathan Diament, director of the Orthodox Union's Institute for Public Affairs.

But word of the June 25 decision hit some Jewish leaders hard.

"It's sort of like one of your children getting killed," said Marc Stern, co-director of the American Jewish Congress' legal department.

"There is now no more federal protection for religious practice," he added. "That hasn't been the case in two generations."

Rabbi David Saperstein, director of the Religious Action Center of Reform Judaism, called the decision one of the "worst mistakes this court has ever made."

However, legal analysts say that the decision was limited to questions surrounding the nature of fed-

eralism and the separation of powers. The RFRA decision centered on the case Boerne vs. Flores, which involved a dispute between a small Texas town and the local Roman Catholic Church.

The church had invoked RFRA after city officials denied an application for the church to expand into the city's historic district.

The church argued that the city's refusal to issue a building permit was an example of governmental action banned by the law.

City officials responded by launching a constitutional attack on RFRA.

Under the 1993 law, passed

nearly unanimously in Congress and signed into law with strong support from President Clinton, federal, state and local governments were required to show a "compelling" interest before interfering with the practice of religion. Even then, the law requires governments to adopt the least restrictive means possible.

Congress enacted the law in response to a 1990 Supreme Court ruling which said laws that otherwise are neutral toward religion can be valid even if they may infringe on some people's religious beliefs.

In its ruling this week, the high court decided that Congress had

overstepped its legislative authority and usurped judicial authority.

Writing for the court majority, Justice Anthony Kennedy said, "Our national experience teaches that the Constitution is preserved best when each part of the government respects both the Constitution and the proper actions and determinations of other branches."

"RFRA," he added, "contradicts vital principles necessary to maintain separation of powers and the federal balance."

Kennedy was joined by Chief Justice William Rehnquist and Justices John Paul Stevens, Clarence Thomas, Ruth Bader Ginsburg and Antonin Scalia.

BERGER BROS INC.
OFFICE FURNITURE — OFFICE SYSTEMS

Call (302) 655-7166

BERGER BROS INC.
 Since 1919
 Market at Third Sts., Wilm., DE

Hours: 8:00 to 5:30 Sat. 8:30 to 2:00

New Castle Farmers Market

Come out for a day of family fun and shopping bargains
DON'T MISS DELAWARE'S BIGGEST & BEST FARMERS MARKET & FLEA MARKET

Voted Best of Delaware

FRI. & SAT. 10 A.M.-10 P.M.
 SUNDAY 10 A.M.-6 P.M.

Rt. 13 (across from Wilmington Airport)
 New Castle, DE 328-4101

Crystal Dance Club
 Alice and Milton Isaacs

BALLROOM DANCING

728 PHILADELPHIA PIKE 19809

PHONE 302-764-3262

CALL TO SET UP AN APPOINTMENT.

CHRISTIANA BANK & TRUST COMPANY

MONEY MARKET CHECKING ACCOUNT*

MINIMUM BALANCE	APY
\$1,000	4.10%

CERTIFICATES OF DEPOSIT

12 MONTH - 24 MONTH CD	APY
	5.75%

* \$1,000 MINIMUM OPENING BALANCE. SUBSTANTIAL INTEREST PENALTY FOR EARLY WITHDRAWAL.

* RATES MAY CHANGE AFTER ACCOUNT IS OPENED. FEES COULD REDUCE EARNINGS ON THE ACCOUNT. ALL ANNUAL PERCENTAGE YIELDS (APY'S) EFFECTIVE 6-19-97.

302-421-5800

GREENVILLE CENTER
 3801 KENNETT PIKE
 GREENVILLE, DE 19807

MEMBER FDIC DELAWARE BANKING...the way it used to be EQUAL HOUSING LENDER

The First Ladies of Real Estate*

REAL ESTATE HOTLINE
 234-5200
 1-800-220-5200

JUDY LEVY, CRS **EILEEN SCHWARTZ, CRS**

224 Green Lane, Green Valley **\$104,000**
 End townhouse with lots of living space that backs to wooded area with privacy. Freshly painted inside.

2217 Mill Lane, Arden **\$134,900**
 Spacious two story home on wonderful lot. 2.5 baths, basement, 2 car garage

1511 Turkey Run Road, Weldin Farms **\$349,900**
 Spectacular two story nestled into a great community. Lovely Florida room, great updated kitchen, all new appliances. Hardwood and pegged floors. Every possible update and great quality!

Patterson Schwartz
 REAL ESTATE

BUILDING LOTS AVAILABLE

Jenny Lane, Centreville	Lot 3, 2.3 acres \$210,000
Cossart Manor Rd., Chadds Ford	Lot 11, 3.8 acres \$225,000
Centreville Tract, Centreville	Lot 4, 2.7 acres \$300,000
	Lot 5, 2.1 acres \$190,000
	Lot 12, 3.6 acres \$260,000

*Ranking in the TOP FIVE PERCENT of all RESIDENTIAL AGENTS IN THE NATION.

Web Address: <http://www.pattersonschwartz.com/levyschwartz.html>
 E-Mail Address: realinfo@pattersonschwartz.com

Call 429-7379

FEATURED ARTISTS
 On Exhibit thru August 31st - Monday - Friday 9am-5pm

IRENE K. SROOG
 New Castle DE 19750

JANET WADDELL
 302-421-5800

NATIONAL • INTERNATIONAL

Congress' Moves on Jerusalem Prompt an International Furor

By MATTHEW DORF
 WASHINGTON, June 17 (JTA) — On May 20, the U.S. Senate celebrated the 30th anniversary of the reunification of Jerusalem by calling on the president and secretary of state to declare publicly that Jerusalem must remain the undivided capital of the State of Israel. No senior Palestinian officials marched on the U.S. Consulate in Jerusalem to protest the Senate vote on the symbolic resolution. Palestinian police did not allow Arab youths in Hebron to throw stones at Israeli troops to signal discontent with the American government.

The measure, like scores of other "Sense of the Congress" resolutions passed each year, drew virtually no international attention and was virtually ignored by the Clinton administration and national media.

But when the House passed the identical resolution exactly three weeks later on June 10 — along with other concrete actions supporting Israel's claim to Jerusalem — marchers rallied and stones flew.

"If this will be a decision adopted by the United States, it is the end of this peace process," Faisal Husseini, the top Palestinian official in Jerusalem, told demonstrators outside the U.S. consulate in Jerusalem.

The mufti of Jerusalem, Ikrima Sabri, who was appointed by the Palestinian Authority, said: "We reject America as a co-sponsor of the so-called negotiations because America has unveiled its ugly face."

What happened in the days that separated the Senate and House votes highlights the intensifying crisis in the peace process and the methods Palestinian leaders employ in their battle to win concessions from Israel.

Israeli-Palestinian negotiations have been frozen since March, when Israel began construction of a Jewish housing site in southeastern Jerusalem and a Palestinian suicide bomber attacked a Tel Aviv cafe, killing three Israeli women.

Tensions continued to escalate. After the Senate vote last month, an Egyptian mediation effort failed and the United States backed off its own unsuccessful attempts to restart peace talks.

Then the House entered the fray to reiterate its support for Israel's policy of an undivided Jerusalem.

In addition, it passed a package of amendments on Jerusalem,

which included \$100 million designated for moving the U.S. Embassy from Tel Aviv to Jerusalem.

In fact, it is unlikely that the money will ever be spent because the House only "authorized" the funding. A separate law as well as President Clinton's approval, which is unlikely, would be required for it to happen.

None of the senior congressional aides who wrote and helped shepherd the measures through the House and Senate thought they would evoke such passions.

Several of the aides described the measure on an undivided Jerusalem, in particular, as a routine expression of support for Israeli sovereignty over its capital.

In fact, Congress has expressed such sentiments at least 10 times since 1990.

But Palestinians saw the move differently. And international condemnation came swiftly.

During his recent swing through Persian Gulf states, Secretary of Defense William Cohen was peppered with questions and criticism in virtually every capital he visited.

"The resolution that was passed by the House would not contribute to getting the peace process back on track," a Pentagon official quoted Cohen as saying in Bahrain.

"The resolution does not reflect the administration's policy."

The administration holds the position that Jerusalem should remain as is until Israel and the Palestinians negotiate its future in final-status talks as they agreed to do in the Oslo accords.

Like most countries, the United States has never recognized Jerusalem as the capital of Israel.

The U.S. Embassy remains in Tel Aviv and the State Department maintains a consulate in the eastern part of Jerusalem to handle matters in the city as well as in the West Bank and Gaza Strip.

But Congress has tried, so far in vain, to push Clinton to recognize a united Jerusalem under Israel's rule.

In addition to the resolution and the measure calling for the embassy to move, the House passed a State Department authorization bill requiring that:

*The U.S. Consulate in Jerusalem serve under the U.S.

Embassy in Tel Aviv; *U.S. government documents list Jerusalem as the capital of Israel;

*The U.S. State Department list "Jerusalem, Israel" as a place of birth in a passport, replacing the current policy of only identifying "Jerusalem."

These measures were accompanied by a fiery speech by Speaker of the House Newt Gingrich (R-Ga.), who equated the Palestinian murder of land dealers who sold real estate to Jews with the actions of the Nazis.

But for now all the efforts on Capitol Hill are non-binding. Given the mounting White House opposition to the bill that contains these Jerusalem provisions, passage is far from certain.

So for now, attention is focused on what Clinton meant when he pledged to a group of Democratic Jewish donors this week that "over the next several days, we'll be seeing some progress."



NAME
BRAND
FASHIONS



Teens N Up



Custom
Designs
available

Sportswear • All-Occasion Dresses
• Suits From Daytime to Black-Tie

Perfect for Bat Mitzvahs
 Stevenson Village in Baltimore, MD, 2 min. from 695 off exit 21
 (410) 484-1125 Hours: Mon.-Fri. 11-6; Sat: 10-5; Sun: 12-4

Not surprising Ponce de Leon never found the fountain of youth.

Martins Run didn't open for another 470 years.

Martins Run, a retirement community that gives you warm companionship, wonderful activities, cultural events, plus the security and peace-of-mind of lifetime medical care **and** also takes away life's daily

hassles—well, it's just about the closest thing to the fountain of youth this century. Come for a visit today. Discover why you'll feel younger living it up every day at Martins Run.



Martins Run
 Life Care Retirement Community

Kosher Dining & Sabbath Services
 Martins Run, 11 Martins Run, Media PA 19063
 Call today to learn more about Martins Run.
 610-353-7660. Outside 610, call 1-800-327-3875.

Please send your brochure. JVDE-FOA

NAME _____

ADDRESS _____

CITY _____ STATE _____ ZIP _____

PHONE _____



Water, a bit of sand and an occasional birdie.
(And we're not even talking golf yet!)



Introducing...

The Pavilions
 at Bethany Bay
 Resort Community

Starting at \$74,900

Hurry! Don't miss out on these water views.

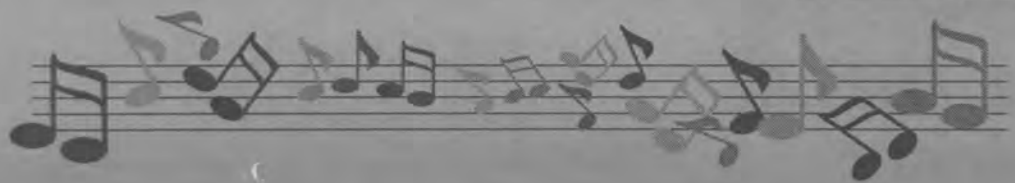
For a Free brochure
 Call 1-800-292-9096 or 302-539-9096
 Public Golf Course Open:
 Call 539-3833

From Route 1 take Route 26 west 4 miles to the big blue Bethany Bay sign and turn right. Follow the signs straight 2 miles to Bethany Bay. Brokers Welcome. 3% Co-Op
<http://www.beach.net.com/bethbay.htm>



BETHANY BAY
 Resort Community

Another Pettinaro Community



A Most Uncommonly Entertaining Dance Band

Classical to Contemporary, Big Band to Broadway, Motown to Top 40 and more . . . The Right Touch for All Occasions.



610-296-2626

Elegant! Energetic! Exciting!



BRUCE FAGAN ENSEMBLE

Music for X-ers to Boomers

Band/Deejay Packages

1-800-FAGAN-11

Ask About "Stressbusters!"



Let

Us

Entertain

You!



Peter Cole

GREAT PARTY BAND

215-572-8100

609-667-4926

Andrea Payne
Banquet Manager
(302)764-7240



Weddings • Bar/Bat Mitzvahs • Banquets
• Receptions • Private Parties
Kosher Catering Available

728 Philadelphia Pike
Wilmington, DE 19809

★★★★★★★★★★★★★★★★★★★★★★
DAVID ZEIDMAN ENTERTAINMENT, INC.
 from the most elegant to casual affairs... over 15 years experience as DJ/EMCEE at Bar / Bat Mitzvahs, Weddings, Social Galas
 Personalized Service • Packages include:
 DJ/EMCEEs • PARTY PRIZES & PROPS • DANCERS
 LIGHTING EFFECTS • VIDEOTAPING • KARAOKE
 POLAROIDs WITH CUT-OUT CELEBRITIES
 SPORTS GAMES • MAGICIANS • JUGGLERS
 CARICATURISTS and much more...
 For information:
 Call **610-527-2833** • FAX: **610-527-2875**
 ★★★★★★★★★★★★★★★★★★★★★★

Hire A CARICATURIST
 AT YOUR NEXT EVENT
JOE WHITE
 Available For:
 BAR MITZVAHS, CONVENTIONS, CO. PICNICS
 & PRIVATE PARTIES
215-222-ARTS

Authorized Ticket Agency
 For The Delaware Valley

B & B tickettown

Tickets available to special events at...
 THE SPECTRUM, CORE STATES CENTER, FLYERS,
 SIXERS, AND CONCERTS
 322 NINTH ST. PLAZA • WILMINGTON, DE 19801
 TELEPHONE: (302) 656-9797 OR (610) 459-3283
 TERRY SKYLAR



WEDDINGS • BAR/BAT MITZVAHS • EVENTS
YOU WANT soft standards for the cocktail hour
YOU WANT a fun band who can play swing, big band,
 Motown, contemporary dance music and a Hora too!
YOU WANT to enjoy yourself and know that someone is in
 control, someone with the experience to coordinate all
 your special needs; crownings, ceremony music etc.
YOU WANT...
The
JERRY BOYLE
Orchestra
 BRIGHT MOMENTS PROD. INC. (215) 923-8001 • (609) 661-0323

Reservations Suggested 302-645-0420

KUPCHICK'S



"Simply, The Best."

CONTINENTAL CUISINE - VICTORIAN AMBIANCE

Specializing in the Freshest of seafoods & Certified Angus® Beef

Dinner 5pm Nightly - Year Round
Early Bird Discount if Seated Before 6PM

Private Gatherings Welcome
Social or Business

ON THE BEACH IN LEWES, DE

D
I
N
I
N
G

Always A Really Big Deal!!!

- Breakfast Specials \$1.99 & up
- Lunch Specials at \$3.99 (11-3 pm M-F only)
- Dinner Specials \$6.49



325-2188
148 N. DUPONT HWY.
(Across from the Airport)
OPEN 7 DAYS A WEEK
7 AM TO 10 PM

The Golden Castle Diner & Restaurant



OPEN 24 HOURS!

Authentic Jersey Style Diner
Breakfast served at all times!
Starting at \$1.99
Lunch Special starting at \$3.99
Dinner Special starting at \$7.95
Early Bird Special 3-5:30 P.M. Starting at \$5.99

20% OFF LUNCH OR DINNER
with this coupon
not valid with other offers
coupon expires 8/1/97

2722 Concord Pike (formerly Kenny Rogers Roaster) 478-7701

Casablanca Moroccan Restaurant

Female Belly Dancers Every Friday, Saturday & Sunday Nights
Ladies - Don't miss Male Belly Dancers 1ST AND 3RD SATURDAY OF EVERY MONTH

Casablanca is a marvelous restaurant palace magnificently reproduced with the authentic architecture, carvings, tiles, paintings and crafts which resulted from twelve centuries of development of Arabic art. Moroccan culture is rich and distinctive.

Our cuisine is presented in a fashion that enhances its surroundings. It is considered by many culinary experts and famous chefs to be among the top three cuisines in the world.

Morocco is a country of contrast, magic and timeless wonders. It is blessed with rich nourishing land and mountain snows; beaches and deserts and lush oases. Its ancient mosques, synagogues, souks, churches and kasbahs exist in harmony with ultra modern cities. It is an exotic blend of Berber, Arabic, Jewish and European cultures.

It is within the true Moroccan tradition that we take the great honor to share this experience with you. Our friendly team of Moroccans will introduce you to our culture. This year, think of Casablanca for your next holiday party, office party, birthday or bachelor party. We'll make your special occasion truly unique.

Share or experience the mysteries of Morocco. It will be an unforgettable evening of Moroccan cuisine, exotic entertainment, enchantment and wonder. Our facilities can accommodate groups of up to 200 people.

Make your special occasion very special by booking your next party at Casablanca. Please call for more information.

Nightly Dinners, Moroccan Style Include

- Moroccan Salad Platter - Combination of Cucumber-Tomato-Sweet Pepper Salad, Carrot Salad and Eggplant Salad, or Harira (1.cntil Soup)
- Bastilla - Filo dough stuffed with Chicken, Eggs, Cinnamon, Sugar and Almonds
- Chicken with Lemon and Olives, or Chicken with Hot Sauce and Cumin, or Rabbit with Prunes
- Beef or Lamb Shish Kebob, or Lamb with Honey and Almonds
- Couscous - Semolina with Vegetables, Raisins and Chick Peas
- Fresh Fruit
- Baklava (Mint tea Included)

- For the Vegetarian
 - Moroccan Salad Platter
 - Bastilla - Filo dough stuffed with Eggs, Cinnamon Sugar and Almonds
 - Spinach Pie - Light Pastry stuffed with Spinach, Onions and Spices
 - Grape Leaves - 6 tender Leaves stuffed with Rice, Parsley and Onions
 - Beverages
Turkish Coffee, Mixed Drinks, Beer, Soda, Hot Mint Tea
- 7-course Nightly Dinners are \$20.00 per person

4010 DuPont Highway New Castle, Delaware 302-652-5344



We Feature Vegetarian Dinners

GAMIELS

Breakfast • Lunch • Dinner • Catering

NEW LOCATIONS!
2222 Silverside Road
(At the site of the old Silverside Dairy Across from Branmar Plaza)
479-5727
Fax: 479-5725

Hours:
6am-2pm Sunday & Monday
6am-8pm Tuesday thru Saturday

Great Family Dining At Moderate Prices

*** SPECIALIZING IN ***

Large Overstuffed Deli Sandwiches
Breakfast From Bagels To Waffles



BREAKFAST Early Bird Special

10% OFF From 6am to 8am



HALF PRICE DINNER ENTREE
Buy One Dinner Entree And Get The 2nd* At Half Price
*of equal or lesser value - with this coupon
479-5727
Not valid with other offers. Offer expires 7-31-97



FREE CUP OF SOUP
with any sandwich or platter during lunchtime

- ◆ Take-Out Available
- ◆ Tray Platters For All Occasions

GAMIEL'S
2222 Silverside Road, Wilmington
479-5727
Great family dining at a convenient new location (on Silverside, across from Branmar Plaza) Breakfast, lunch and dinner at moderate prices. Take-out and party tray platters available. 6 A.M.-2 P.M. Sun. and Mon. 6 A.M. - 8 P.M. Tues.-Sun.

I•HOP International House of Pancakes
148 N. DuPont Highway,
New Castle, DE, (302) 325-2188
Come and Grab a Bite... Morning, Noon or Night!
COME AND ENJOY!

Cherry Street Chinese Kosher Vegetarian Restaurant
1010 Cherry St., Philadelphia, PA
(215) 923-3663

There is an extensive macrobiotic and Pritikin menu, and the feature here is the freshness and variety of Chinese vegetarian cooking -- flavorful, delicious and Kosher.

Second floor banquet facilities are available for Bar Mitzvahs, weddings, and functions for up to 100 people. Discount parking is offered.

Recently awarded "Four Spoons" by Steve Levy's "On the Menu."

Casablanca
Moroccan Restaurant
4010 DuPont Highway
New Castle, DE
(302) 652-5344

Special occasions are truly unique at Casablanca, where you are treated to exotic entertainment in addition to fine Moroccan cuisine, which will satisfy all tastes, including the vegetarian.

THE GOLDEN CASTLE DINER
2722 Concord Pike,
Wilmington, DE
478-7701

Authentic Jersey-style diner with extensive menu. Breakfast served at any time of the day. Daily homemade specials for lunch and dinner. Homemade desserts.

Early bird special from 3-5:30 P.M.
OPEN 24 HOURS.



The Fox Point Grill

New Nightly Features

Monday Nights
New England Clam Bake
\$19.95

Tuesday Nights
Roast Prime Rib
With Baked Sweet Potato
And Asparagus
\$15.95

Wednesday Nights
Wild Game Night
Market Price

Thursday Nights
Soft Shell Crabs
Choice Of Meunier
Or Pistachio Encrusted
\$17.95

Friday Nights
1 1/2 lb. Live Maine
Lobster Stuffed
With Crab Imperial
\$18.95

We feature SPECIAL BAR/BAT MITZVAH PARTIES
On and Off Premises Catering

Recently Awarded
FOUR SILVER SPOONS
by Philadelphia's **STEVE LEVY'S**
"ON THE MENU"

LUNCH MON. THRU FRI. 11:30-2:30PM • OPEN EVERY DAY FOR DINNER FROM 4:30PM
VOTED DELAWARE TODAY'S "BEST REGIONAL CUISINE"

321 E. Lea Boulevard • Wilmington, Delaware 19802
302-762-5655

Fox Point Grill
321 E. Lea Blvd., Wilm. (302) 762-5655
Features regional American-style cuisine in a casual but refined atmosphere. Recently awarded "Four Silver Spoons" by Steve Levy's "On the Menu," a covered and distinguished dining citation, unique in the Delaware area. An extensive wine list is featured, and Fox Point Grill has become a popular place for Bar/Bat Mitzvah and special events celebrations. Phone for Reservations

KUPCHICK'S On the Beach in Lewes, DE (302) 645-0420
Kupchick's offers the best of both worlds, with two completely different menus and dining rooms. The plush Victorian dining room offers an extensive gourmet menu with daily specials to premier freshly caught and seasonal fish, as well as Angus beef. The Comfort Grille is designed with the casual family beach goer in mind featuring a totally different, but equally high quality selection of burgers, main course salads, pasta, and lighter fare. All food served at Kupchick's, including the dazzling dessert selection, is made on premises. Reservations suggested.

PICCIOTTI'S
3001 Lancaster Ave.,
Wilmington
652-3563
Intimate dining in an upscale yet relaxed atmosphere. Known throughout the Delaware Valley for excellent filet mignon, it is worth keeping in mind that on Thursday nights, diners can order the large filet mignon for the price of the small filet.
Homemade desserts. Separate bar.
Open for lunch on Mon.-Fri.
Open for Dinner 7 days

Let Them Eat Cake
But serve them Filet Mignon first!
Had Marie Antoinette added that to her famous saying, she may have saved her head and if she had served our fillet, she would have remained queen. Taste the fillet that could have changed France's history. Discover what most of the Delaware Valley already knows. Remember that every Thursday night is filet night, when you will get our delicious large fillet for the price of our small fillet. Visit us soon!

Picciotti's Restaurant
3001 Lancaster Ave., Wilmington 652-3563
Open for lunch Monday-Friday • Dinner 7 days



CHERRY STREET Chinese Vegetarian Restaurant

Featuring Convenient, Discount Parking

Kosher *Non-Smoking Restaurant* **Kosher**
Certified Kosher By Rabbi Saks,
Rabbinical Assembly of America

Party Room Available
for Parties up to 100
Catering for Parties

HOURS:
Mon.- Thurs. - 11:30 to 10 pm
Fri. & Sat. - 11:30 to 11pm
Sunday 12:30 to 10pm
LUNCH AND DINNER TAKE OUT

AWARDED FOUR SILVER SPOONS by Philadelphia's STEVE LEVY'S "ON THE MENU"

1010 CHERRY STREET (215) 923-FOOD
PHILADELPHIA, PA 19107 (215) 923-3663

HOW DO YOU SAVE MORE THAN 1,800 CLAMS AT THE BEACH?

BUY THE BEACH BOOK®

Save at the Maryland and Delaware shore with discounts on:
**Fine Dining • Fast Food • Amusement Parks
Shopping • Water Sports • Miniature Golf
And much More!**






With discounts valid through April 30 of next year, one Beach Book will pay for itself many times over in savings!

IT'S A SHORE THING!

CALL (410) 825-3463 TO ORDER!
Or complete and mail form below.
Visit us at our website at <http://www.atbeach.com/beachbook/>
ASK YOUR ORGANIZATION FOR THE BEACH BOOK®

JUST \$12.95 FOR OVER 350 DISCOUNT COUPONS.

FOR THE FLAIR YOUR EVENT DESERVES.

Mr. B FOOD SERVICES

658-8571

Laura Pauls
catering coordinator

YES! I want to save hundreds of dollars on my next beach vacation! Please send me _____ book(s) at \$12.95 each + \$2.75 S&H per order.

I have enclosed a check or money order for \$ _____ Please charge my: VISA MasterCard Discover
Make checks payable to The Beach Book®. Please circle one.

NAME _____ ACCOUNT # _____
ADDRESS _____ CITY _____ EXP. DATE _____
STATE _____ ZIP _____ PHONE _____ SIGNATURE _____

Complete order form, enclose payment and mail to: **THE BEACH BOOK®** • 1031 Cromwell Bridge Road • Baltimore, MD 21286

J.V. 6/27

Business & Professional



DANIEL W. FINK, D.D.S.
FAMILY DENTISTRY

TELEPHONE
(302) 479-7111

TALLEYVILLE TOWNE SHOPPES
3650 SILVERSIDE ROAD
WILMINGTON, DE 19810



Barbara K. Levy, CRS
Realtor

Licensed Broker in DE, PA, MD
"A satisfied client is my #1 priority"

Phone: (302) 529-2626
(302) 475-6786

EMAIL:
BLEVY78108@AOL.COM



NEED AN ELECTRICIAN

Call us, we would be pleased to answer all of your questions. Electrical services in your Home, Office, Store and Factory.

You will sleep better at night when you know it's wired right.

DELCOLLO ELECTRIC INC.

Dependable Service Since 1975 • Licensed & Insured
Call 994-3400

BAYSHORE

SAVINGS & SELECTION!



1997 FORD
WINDSTAR

WE SPECIALIZE IN COMMERCIAL FORD AND MITSUBISHI TRUCKS!

Call Sandye or Jerry Turnauer for personal service.
SALES HOURS:
Mon.-Fri. 7:30am-9pm; Sat. 7:30am-5pm
SERVICE HOURS:
Mon.-Fri. 7am-MIDNIGHT; Sat. 7:30am-4pm

Route 13 & I-495, New Castle, DE
(302) 656-3160

<http://www.bayshore-ford.com>



JUDITH B. GILBERT, M.ED., LUTCF
DIRECTOR

FH Financial HOUSE
Building Your Financial Foundation

New Office
To Offer
More Services

5818 Kennett Pike
Centreville, Delaware 19807

(302) 654-5451 ext. 29
FAX (302) 654-5847
1-800-366-0632



Razor ... or Laser?

Now you have a choice!

Remove Unwanted Body Hair by Laser*

*IRB Protocol

- Bikini Lines
- Upper Lip
- Beard Area
- Chest
- Under Arms
- Legs
- Sideburns
- Back

Quick, Gentle and Long Lasting Hair Removal
No Needles — Minimal Discomfort — In-Office Procedure



FANNY J. BERG, M.D.
Foulk Road Office Park Plaza
2000 Foulk Road — Suite A
Wilmington, DE 19810

(302) 475-8000

PHILIP BERGER

Weichert "Presidents" & "Ambassadors" Club

Weichert,®
Realtors



OFF: 302-478-3800 • RES.: 302-764-8384
Professional, competent, "enthusiastic"
real estate service since 1969

ASK FOR A LIST OF REFERENCES.

WSFSbank
YOUR HOME TEAM

Wilmington Savings Fund Society, FSB

Diane Berger

Residential Mortgage Loan Officer

838 Market Street • Wilmington, Delaware 19899 • (302) 571-6843
(800) 356-8945 • Fax (302) 573-3279 • Pager (302) 431-4752
Home (302) 764-8384

(302) 998-2060

KELMAN CHIROPRACTIC CENTER, P.A.



MICHAEL P. KELMAN, D.C.
3722 Old Capitol Trail
Wilmington, Delaware 19808

Family Practice of Chiropractic



Harry David Zutz Insurance, Inc.

Committed to Creative Insurance and Risk Management Solutions for More Than 50 Years

Complete insurance coverage and underwriting facilities for:
• Business and Personal Insurance
• Marine • Surety bonds
Specialists in unusual risks

PLI Professional Liability Insurance, Inc.
an affiliate of Harry David Zutz Insurance, Inc.

Comprehensive coverage for professionals of all disciplines

300 Delaware Avenue P.O. Box 2287
Wilmington, DE 19899
(302) 658-8000
Branch Office:
#1 Seething Lane
London, EC3N 4NH
England
Phone: 071-962-2003

THE SPEECH CLINIC
INCORPORATED

Providing Comprehensive Speech Language Therapy Services

999-0702

5147 W. Woodmill Drive, Suite 21
Wilmington, DE 19808

joel h. shoulson

the only second generation fully approved full-time, professional

מוהל
(mohel)

serving your community since 1951

1-800-700-JOEL (5635)
610-896-7750

please call for videotape and information

SYNAGOGUE LIFE

Temple Beth El's Confirmation Class



L to R, front row: Eve Kaplan, daughter of Rabbi David & Terri Kaplan; Leanne Acero, daughter of Marcia Acero. Second row: Beth Gelman, daughter of Bob & Diana Gelman, Danielle Solan, daughter of Barry & Anne Solan; Natalie Green, daughter of Barry & Barbara Green. Back row: Marcus Landis, son of Marc & Cathy Landis; Jeff Oster, son of Jerry & Linda Oster; Julia Temko, daughter of Robert & Vicki Temko; Joe Novick, son of Steve & Sandy Novick.



On June 11, 1997, the 7th of Sivan 5757, in commemoration of Hag Matan Torateinu, the Festival of Shavuot, the Giving of the Torah, Adas Kodesh Shel Emeth honored each of the men and women who have served as Torah readers over the last several years. Mollie Epstein - Makar gave a D'var Torah and Mark Wagman congratulated all of the readers. Pictured above are Cantor Daniel Leeman and Nathan Cohen.



SUBARU OUTBACK

Half Sport Utility. Half Car. All Adventure.

Ever since the first SUV hit the road drivers have been asking for the safety, ride, gas mileage and comfort of a passenger car combined with the performance and versatility of an off-road vehicle. Well, now it's here! Experience the thrill of the Subaru Outback.



Delaware's Exclusive Subaru Dealer.
#1 in Subaru Sales in Delaware for 16 years running
255 E. Cleveland Ave., Newark, DE 19711
302-453-9900



The Beth Shalom Confirmation Class, consisting of Emily Pressman, Rachel Zahn, Josh Hubner, Josh Romirowsky, Andrea Weissman, Hannah Grossman, Margo Jaffee, and Joel Lipschultz, performed odd jobs and held a Purim raffle in order to commission a work from Delaware artist Riva Brown. Her work, pictured above, is based on the Haftorah portion Ezekiel.

The students babysat, mowed and weeded lawns, cleaned garages in addition to other jobs. Joel Lipschultz coordinated the project. Each year Beth Shalom's Confirmation Class presents a gift to the synagogue.

Riva Brown, local illustrator and calligrapher, has works on display now through June 30 in the lobby of the Clayton Hall, located on the University of Delaware's Laird Campus, Route 896, north of Newark. The exhibition includes watercolors that range from tight and detailed still lifes to loose and abstracted landscapes. Her pencil sketches are generally fantasy illustrations with a narrative quality. Brown is a graduate of UD and the co-owner of Living Letters Studio in Wilmington. Several examples of her calligraphy hang in UD's Morris Library.

The Clayton Hall gallery is open from 8 a.m.-5 p.m., Mondays through Fridays. For more information on the exhibit, call (302) 831-3060. For weekend hours, call (302) 831-1259.
Photo: JDS

K

THE KUTZ HOME

A Medicare and Medicaid certified facility offering:

- 24-hour skilled nursing care
- Physical rehabilitation services
- Activities programs
- Kosher meals and snacks
- Sabbath and holiday services
- On-site beauty parlor

For more information about the Kutz Home, please call Shella Mensch at (302) 764-7000.

The Milton & Hattie Kutz Home, Inc.
704 River Road • Wilmington, DE 19809

Just 30 minutes from center-city Philadelphia
Just 90 minutes from downtown Baltimore

1996 UJA/Federation Campaign Honor Roll

The financial commitment of thousands of Delawareans to the 1996 UJA/Federation Campaign enables the Jewish Federation to provide a wide range of social, educational, and cultural programs to our brothers and sisters in Delaware, Israel and endangered communities around the world. The following Honor Roll lists all contributions made to the 1996 Campaign between January and December 1996. A number of donors requested to remain anonymous.

All gifts are printed in the category representing the total household contributions. Unless otherwise requested, listings of one unit represent one family gift. Listings with two complete names indicate an individual gift from both husband and wife. The Jewish Federation of Delaware continues to encourage individual giving.

We apologize in advance for any inadvertent errors or omissions and ask that corrections be brought to our attention by calling 427-2100.

The Board of the Jewish Federation of Delaware expresses its profound gratitude to these many individuals whose commitment to *Tzedakah* has enhanced life. For Ourselves. For Our Children. For Israel. Forever.

ABRAHAM

Mrs. Frances Glenn
Doris & Irving Morris
Shandle Foundation, Inc.
Irving S. Shapiro, Esq., Mrs. Charlotte Shapiro & Beth Shapiro

SARAH

Norman N. Aerenson, Esq. & Mrs. Phyllis Aerenson
Mrs. Yetta Chaiken
Harry Cohen Foundation
Dr. Garth A. Koniver & Mrs. Ellen R. Koniver
Mr. Sidney Laub & Mrs. Bea Laub
Karen L. Morris, Esq. & Mr. Alan D. Levenson
Steven & Carol Rothschild
Mr. Bernard L. Siegel & Mrs. Ruth B. Siegel
Mrs. Martin Sloan
Stuart B. Young, Esq. & Mrs. Toni Young

ISAAC

Mr. Howard H. Simon & Mrs. Arlene Simon

REBECCA

Anonymous (4)
Mr. & Mrs. Henry Beckler
Dr. Steven A. Dombchik & Mrs. Rhoda Dombchik
Dr. Steven L. Edell & Mrs. Miriam Edell
Dr. Bennett N. Epstein & Mrs. Alice Epstein
Mr. & Mrs. Paul R. Fine
Mr. Marvin S. Gilman & Mrs. Muriel E. Gilman
Mr. Irving J. Grossman & Mrs. Danielle Grossman
Mr. Albert Heisler & Mrs. Doris S. Heisler
Mr. Lawrence Isakoff & Franca Isakoff, Esq.
Robert Jacobs, Esq.
Richard A. Levine, Esq. & Mrs. Andrea A. Levine
Dr. Michael Leviton & Mrs. Amy Leviton
Mr. Richard D. Longwill & Mrs. Barbara Longwill
Mr. Andrew Miller & Mrs. Barbara Miller
Stephen R. Spiller, Esq. & Mrs. Renee S. Spiller
Mr. & Mrs. Bruce M. Stargatt
Mr. Henry Topel
Mr. & Mrs. Sheldon A. Weinstein
Dr. Bertram N. Widder & Mrs. Diane Levin Widder
Mr. & Mrs. Harry David Zutz

JACOB

Anonymous (3)
Dr. Colin Anolick & Mrs. Elizabeth Anolick
Hon. Bernard Balick, Esq. & Hon. Helen S. Balick, Esq.
Berger Bros.
Mr. & Mrs. Martin Berger
Blank, Rome, Comisky & McCauley
Stuart Grant, Esq. and Jay Eisenhofer, Esq.
Jack B. Blumenfeld, Esq. & Ms. Jean L. Blumenfeld
Mr. & Mrs. Edward L. Feldman
Dr. Errol Ger & Mrs. Ruth Ann Ger
Dr. Edward M. Goldenberg & Mrs. Leslie Goldenberg
Dr. Richard F. Gordon & Mrs. Helaine Gordon
Mr. David Hefter & Mrs. Susan Hefter
Stephen E. Herrmann, Esq. & Mrs. Susan A. Herrmann

Arthur Inden, Esq. & Mrs. Sheila Inden
Dr. & Mrs. Sheldon Isakoff
Mr. Steven & Dr. Susan Jonas
Mr. & Mrs. Daniel L. Klein
Mr. Alan B. Levin & Mrs. Ellen Levin
Martin Lubaroff, Esq. & Mrs. Sandra P. Lubaroff
David J. Margules, Esq. & Mrs. Michelle Margules
Robert Meyer, Esq. & Ellen S. Meyer, Esq.
Donald F. Parsons, Esq. & Mrs. Ethel B. Parsons
Dr. & Mrs. Sidney Pell
Dr. & Mrs. Paul C. Pennock
Robert B. Pincus, Esq.
Sheldon N. Sandler, Esq. & Mrs. Susan S. Sandler
Mr. Alan Schoenberg & Mrs. Barbara H. Schoenberg
Mr. Louis Sloan
Dr. Michael G. Sugarman & Mrs. Connie J. Sugarman
Mr. Norman Tomases & Mrs. Barbara H. Tomases
Tuttleman Family Foundation
Dr. Richard L. Venezky & Hon. Karen Venezky
Rabbi David A. Wortman & Mrs. Judy B. Wortman
Dr. & Mrs. Howard W. Zucker

LEAH

Anonymous (14)
The Arguild Foundation
Arthur G. Connolly, Sr.
Dr. & Mrs. Barry L. Bakst
Mrs. Marjorie G. Balick
Mr. Melvin Berg & Mrs. Faye Berg
Benjamin J. Berger, Esq. & Mrs. Wendy Berger
Gerald Z. Berkowitz, Esq. & Alene Berkowitz, Esq.
Dr. & Mrs. David L. Blumberg
Dr. Samuel H. Blumberg & Dr. Elizabeth A. Blumberg
Dr. & Mrs. Howard Z. Borin
Mr. David Braunstein & Mrs. Doris Braunstein
Mr. Isaac L. Budovitch & Mrs. Florence G. Budovitch
Mr. & Mrs. Mark J. Caplan
Mrs. Phyllis Cobin
Mr. & Mrs. Herman Cohen
Dr. & Mrs. Mark Cohen
Dr. Judith Cohn
Mrs. Eileen T. Conner
Mr. & Mrs. Robert B. Coonin
Mr. Robert F. Davis & Mrs. Arlene G. Davis
Dr. & Mrs. Barry S. Denenberg
Dr. & Mrs. Marvin H. Dorph
Mr. David A. Drexler & Mrs. Judie Drexler
Mr. & Mrs. Leslie Dukart
Dr. Lanny Edelson & Mrs. Micki Edelson
Mr. Eugene Ellick & Mrs. Lynne Ellick
John A. Elzufon, Esq. & Mrs. Lena J. Elzufon
Glenn M. Engelmann, Esq. & Mrs. Michelle R. Engelmann
Alan & Marsha Evantash
Mr. & Mrs. Scott A. Feinman
Louis J. Finger, Esq. & Mrs. Dorothy K. Finger
Mr. & Mrs. Jesse A. Finkelstein
Dr. Andrew J. Gelman & Mrs. Frances Gelman
Mr. & Mrs. Steven D. Goldberg
Mr. Mark H. Goldman
Michael D. Goldman, Esq. & Mrs. Faith Goldman

Mr. Edwin Golin & Mrs. Maura E. Golin
Dr. & Mrs. Charles Goodman
Dr. Edwin L. Granite & Mrs. Bella Granite
Mr. & Mrs. Stuart M. Grant
Mr. Alfred J. Green & Mrs. Florence Green
Mr. & Mrs. Kevin Gross
Mr. & Mrs. Jerome K. Grossman
Mr. Jack Handloff & Mrs. Helen Handloff
Mr. Jerome S. Heisler, Jr. & Dr. Rebecca Jaffe
Dr. Gordon Honig & Mrs. Joy Honig
Dr. & Mrs. Paul Imber
Hon. Jack B. Jacobs, Esq. & Mrs. Marion Jacobs
Dr. Joshua Kalin & Mrs. Harriet Kalin
Dr. & Mrs. Barry S. Kayne
Hon. & Mrs. Charles K. Keil
Mrs. Gertrude Keil
Dr. & Mrs. Barry Klassman
Dr. Daniel R. Kreshtool & Mrs. Susan Kreshtool
Mr. & Mrs. Daniel M. Kristol
Mrs. Pearl Kristol
Dr. Russell J. Labowitz & Mrs. Susan L. Labowitz
Richard D. Levin, Esq. & Mrs. Marilyn Levin
Mr. & Mrs. Milton Levinson
Dr. Leon Levy & Mrs. Alma Levy
Roger M. Levy, Esq. & Mrs. Danna Levy
Mr. & Mrs. Herbert H. Lubitz
Paul Lukoff, Esq. & Mrs. Rhonda G. Lukoff
Dr. William Markell & Mrs. Elaine Markell
Mr. Harold E. May
Mr. & Mrs. Herbert Moelis
Mr. & Mrs. A. R. Morris
Dr. Stuart Nemser & Mrs. Lelaine E. Nemser
Dr. James H. Newman & Mrs. Leslie Newman
Mr. James M. Orman
Harold Pezzner, Esq. & Mrs. Nan Pezzner
Dr. David & Dr. Ethel Platt
Mr. & Mrs. Philip Pollack
Dr. & Mrs. Otaker Pollak
Mr. & Mrs. David Roebeg
Mr. & Mrs. Joseph Rudnick
Mr. & Mrs. Allan C. Rusten
Mr. Barry Schlecker
Mr. & Mrs. N. Norman Schutzman
Mr. & Mrs. Sol Schwartz
Dr. & Mrs. Leonard H. Seltzer
Dr. & Mrs. Philip A. Shlossman
Dr. Jack P. Sokoloff & Mrs. Terry S. Sokoloff
Mr. Lewis Stat & Mrs. Mildred Stat
Mr. & Mrs. Edwin Tocker
Dr. Eugene I. Tolpin & Mrs. Gail Tolpin
Dr. Ralph Tomases & Mrs. Bernice H. Tomases
Mr. Gerald Turnauer & Mrs. Sandye E. Turnauer
Dr. Ross M. Ufberg & Mrs. Carol Braunstein Ufberg
Geo. J. & Gladys Weiner
Dr. & Mrs. Howard Wilk
Mr. Milton Wolf & Mrs. Mary Wolf
Herbert M. Wolfson, Esq. & Mrs. Harriet Wolfson
Mrs. Barbara E. Yalisove
The Zallea Foundation
Mrs. Tanya Zallea & Mrs. Rose Zallea
Dr. Leo Zefiel & Mrs. Sybil Zefiel
Dr. George Zurkow & Mrs. Libby Zurkow
Mr. Theodore C. Zutz & Mrs. Sylvia H. Zutz

RACHEL

Anonymous (24)

Mr. Joel E. Antinoph & Mrs. Janice B. Antinoph
Mr. Richard A. Austin & Mrs. Florence Austin
Mr. David A. Balick & Mrs. Ruth Balick
Dr. Bruce & Dr. Fanny Berg
Rabbi Ellen & Dr. Steven Bernhardt
Dr. Richard F. Brams & Mrs. Renee Brams
Mr. & Mrs. Kenneth E. Bubes
Mr. & Mrs. James Chaikin
Mr. & Mrs. D. L. Cohen
Dr. Neal B. Cohn & Mrs. Barbara J. Cohn
Rabbi & Mrs. Sanford L. Dresin
Mr. & Mrs. Jeffrey Drowos
Mr. & Mrs. Richard Easton
Dr. & Mrs. David M. Epstein
Dr. & Mrs. Lloyd L. Falk
David L. Finger, Esq.
Dr. & Mrs. Alan J. Fink
Mrs. Rona G. Finkelstein
Mr. Ralph Friedberg & Mrs. Elaine C. Friedberg
Dr. & Mrs. Edwin Gittelman
Jeffrey S. Goddess, Esq.
Dr. & Mrs. Abraham A. Golden
Mr. Philip Goldstein & Mrs. Leslie Goldstein
Dr. & Mrs. Maurice Goleburn
Mr. Elliott Golinkoff & Dr. Roberta Golinkoff
Mr. Mendel T. Gordon & Mrs. Helen C. Gordon
Mr. Allen A. Greenberg
Rabbi Peter H. Grumbacher & Mrs. Suzanne Grumbacher
Dr. Bernard Haimowitz
Mr. & Mrs. Mark L. Handler
Dr. Eugene Kane
Mr. Richard L. Kane & Mrs. Cynthia Kane
Mr. & Mrs. Barney R. Kantar
Dr. Steven J. Kattler & Mrs. Donna M. Kattler
Mr. & Mrs. Manfred Katz
Dr. Jerome Kay & Mrs. Myra Kay
Marcia & Morton Kimmel
Dr. Vivian Klaff & Mrs. Frances Klaff
Dr. Charles Klein & Mrs. Naomi R. Klein
Mr. & Mrs. Leroy Klein
Mr. Daniel Koffler
Mr. Jacob Kovner
Dr. & Mrs. John B. Kramer
Mrs. Constance Kreshtool
Mark D. Kuller, Esq. & Mrs. Lori L. Barbanel
Dr. David A. Levitsky & Mrs. Marilyn Levitsky
Dr. & Mrs. Maurice Liebesman
Dr. Marsha London
Mrs. Judy F. Melman
Norman M. Monhait, Esq. & Dr. Marcia S. Halperin
Mr. & Mrs. Richard H. Morse
Dr. Arthur Z. Moss & Mrs. Karen G. Moss
Jonathan P. Neipris, Esq. & Ms. Myrna Ryder
Mr. & Mrs. Jim Newsom
Dr. Manuel Panar & Mrs. Rita Panar
Dr. Jay D. Paul & Mrs. Suzanne Z. Paul
Richard A. Paul, Esq. & Mrs. Jacqueline R. Paul
Mr. Roger J. Pernick & Mrs. Ruth F. Pernick
Mr. Leaman B. Podolsky & Mrs. Jean L. Podolsky
Joseph J. Rhoades, Esq. & Mrs. Barbara L. Rhoades
Dr. & Mrs. Michael T. Rosen
Mr. Stanley Rosen & Mrs. Ann Rosen
Dr. & Mrs. Leonard Rosenbaum
Mr. & Mrs. Barry A. Schnoll

Dr. & Mrs. Leo F. Sherman
Mr. Morris M. Simon
Ms. Eve Slap
Mr. & Mrs. Harold Snyder
Mr. & Mrs. Phillip Spiegelman
Mr. & Mrs. Stephen L. Strassner
Mr. Solomon Tobey & Mrs. Annette Tobey
Leonard S. Togman, Esq. & Mrs. Barbara Togman
Mr. William M. Topkis & Mrs. Judith L. Topkis
Mrs. Sadie C. Toumarkine
Dr. Harold Ulberg & Mrs. Ceci Ulberg
Vanguard Imaging, PA
Joe & Laura Ullman and Nate & Noah Ullman
Hon. Robert H. Wahl, Esq. & Mrs. Constance Wahl
Dr. Edel Wasserman & Mrs. Zeldia Wasserman
Dr. Andrew G. Weinstein
Mr. Jerry G. Weinstein & Ms. Lisa M. Reshaur
Dr. Jay G. Weisberg & Mrs. Loretta Weisberg
Michael Weiss, Esq. & Mrs. Janice Weiss
Mr. Richard Winer & Mrs. Serena Winer
Mr. & Mrs. Joseph S. Yucht
Lillian & Byron Zolin
Mr. & Mrs. Lawrence I. Zutz

JUDAH

Anonymous (18)
Mr. & Mrs. Frederick Alexander
Mr. & Mrs. Michael Amsterdam
S. Samuel Arshat, Esq. & Hon. Roxana C. Arshat, Esq.
Sidney Balick, Esq. & Mrs. Carol Balick
Mr. & Mrs. Sol Balick
Mr. & Mrs. Nathan Barnett
Mr. & Mrs. Samuel Bean
Dr. & Mrs. Paul Becher
Mr. & Mrs. Norman Bell
Mrs. Sybil S. Berger
Mr. Jay A. Blumberg & Mrs. Nancy F. Blumberg
Mr. Morton Brown & Mrs. Roberta Brown
Mrs. Cora Carlis
Dr. Joel D. Citron & Mrs. Barbara K. Citron
Malcolm S. Cobin, Esq. & Mrs. Susan Cobin
Mr. Frederick W. DeVries & Mrs. Mary S. DeVries
Mr. Irwin Engelson
Mrs. Hildreth Finkel
Mr. & Mrs. Richard Galperin
Mr. Richard J. Geisenberger & Ms. Marci A. Muskin
Mr. & Mrs. Allen M. Goldberg
Dr. & Mrs. Joel S. Golden
Mr. & Mrs. Perry F. Goldlust
Mr. Arthur N. Green
Mr. & Mrs. Joseph B. Green
Dr. Jay Halo
Mrs. Shirley First Handelman
Mr. Michael Hierman & Mrs. Ann Hierman
Dr. & Mrs. Richard Hindin
Dr. Milton Isaacs & Mrs. Alice K. Isaacs
Mr. & Mrs. Michael B. Joseph
Rabbi David B. Kaplan & Mrs. Terri G. Kaplan
Dr. & Mrs. Edwin C. Katzman
Dr. & Mrs. Arnold D. Kerr
Mr. & Mrs. Bernard D. Kleban
Dr. Gershon Klein & Mrs. Goldie Klein
Dr. & Mrs. Harvey L. Kliman
Dr. Gerald W. Kronfeld & Mrs. Nancy L. Kronfeld
Mrs. Evelyn Laiken

Abraham...\$50,000 and more ☆ Sarah...\$25,000 - \$49,999 ☆ Isaac...\$18,000 - \$24,999 ☆ Rebecca...\$10,000 - \$17,999
☆ Jacob...\$5,000 - \$9,999 ☆ Leah...\$1,800 - \$4,999 ☆ Rachel...\$1,000 - \$1,799 ☆ Judah...\$613 - \$999
☆ Deborah...\$360 - \$612 ☆ David...\$180 - \$359 ☆ Ruth...\$100 - \$179 ☆ Akiba...\$1 - \$99

1996 UJA/Federation Campaign Honor Roll (continued)

Mr. Aaron L. Gobler & Ms. Lisa B. Cain
Mr. Albert Z. Goldberg & Mrs. Helen Goldberg
Dr. & Mrs. Allan Goldfeder
Mr. & Mrs. David Goldman
Hon. Carl Goldstein & Dr. Judith A. Hough-Goldstein
Dr. Edward J. Goldstein
Mrs. Faye E. Goldstein
Miss Frances R. Goldstein
Dr. & Mrs. Neil H. Goldstein
Mr. Sidney Goldstein & Mrs. Dolores Goldstein
Dr. & Mrs. Stanley Goleburn
Mr. Jan Goodhart & Mrs. Susan Goodhart
Dr. & Mrs. Michael D. Gordon
Mr. Morton Gordon
Mr. Stephen Gordon
Mr. & Mrs. Bert Green
Mr. Marvin L. Green
Mr. Irvin G. Greenfield
Mrs. Marcie I. Hardy
Mrs. Johanna Heimann
Mr. & Mrs. Otto A. Heitlinger
Mr. Arnold R. Helfand & Mrs. Joan C. Helfand
Dr. & Mrs. Harry Heller
Mrs. Bettye L. Herman
Mr. Douglas Herrmann
Mr. Morton Himmer & Mrs. Joan Himmer
Mr. Leonard Hirschhorn* & Mrs. Hilda Hirschhorn
Mr. & Mrs. Milton S. Honey
Mr. Barney D. Hool
Dr. Robert A. Horlick
Mr. & Mrs. Arnold Irwin
Dr. Milton Isaacs & Mrs. Alice K. Isaacs
Dr. David Isaacs
Mr. & Mrs. Lawrence H. Isaacs
Ms. Barbara R. Jacobs
Mrs. Paula B. Kamison
Dr. Michael Kaplan & Mrs. Evelyn Kaplan
Mrs. Eileen Kates
Dr. Howard J. Kattler & Mrs. Deane Kattler
Mr. & Mrs. Edward Kauffman
Mr. & Mrs. Irving Kaufman
Mr. Ari Kayne
Ms. Phyllis Kazinoff
Mr. & Mrs. Alfred M. Kessler
Mrs. Lillian P. Kessler
Mrs. Elsa M. Klahr
Mr. & Mrs. Jay S. Kogon
Mr. & Mrs. Jeffrey Koltenuk
Dr. Mark H. Krackov
Mr. David Krigstein & Mrs. Rita Krigstein
Ms. Myrtle E. Kurland
Mr. H. David Kursh & Mrs. Deborah Kursh
Mr. & Mrs. Raymond Kursh
Mr. Wayne S. Kursh
Mr. Bruce Laporte & Mrs. Maureen Laporte
Mr. & Mrs. James S. Lehr
Mr. & Mrs. Irvin Levin
Ms. Staci I. Levin
Dr. & Mrs. Alan R. Levine
Mr. & Mrs. Robert Levine
Mrs. Sue Levinson
Ms. Barbara B. Levitt
Mr. George Levitt & Mrs. Julie A. Levitt
Ms. Helen Levy
Mr. & Mrs. Jeffery M. Lewis
Mrs. Miriam B. Lieblein
Mr. & Mrs. Richard A. Linett
Mr. Mark R. Lipman & Mrs. Karolin S. Lipman
James Littman, Esq.
Mr. Richard S. Litwin & Mrs. Harriet A. Litwin
Ms. Evelyn Lobel
Mrs. Mary Elizabeth Power-Lubitsh
Mr. & Mrs. David M. Lukoff
Dr. & Mrs. David A. Maged
Mr. & Mrs. Ronald Makar
Mr. & Mrs. Paul Mason
Mr. & Mrs. Brad A. Meiners
Dr. Paul Melnick
Mrs. Bobby Miller
Mr. Fred Miller
Mr. & Mrs. Joseph Miller
Dr. Cyril Milunsky & Mrs. Marlene C. Milunsky
Mr. & Mrs. Jeffrey E. Miripol
Ms. Sharon I. Mittelman
Mr. & Mrs. Lester Morganstein
Mr. & Mrs. William Myers
Ms. Harriet Nadler
Mr. David A. Newman
Mrs. Rose L. Newman
Ms. Leslie Noji
Mr. & Mrs. Robert Pagenkemper
Mr. Howard & Dr. Marian Palley
Mr. Bernard D. Panitz & Mrs. Sylvia F. Panitz
Ms. Susan L. Parcels
Mr. Sidney Paul

Dr. & Mrs. Douglas T. Pearson
Mr. Marc D. Pevar & Mrs. Susan Pevar
Mr. & Mrs. Albert R. Piha
Mrs. Esther Pilnick
Mr. & Mrs. Oscar Pindus
Mr. & Mrs. Richard A. Plaut
Mrs. Susan B. Pliitt
Mr. Bernard Polin
Mr. Lawrence Price & Mrs. Sandra A. Price
Mr. & Mrs. James Prober
Mr. Robert Prybutok & Mrs. Suzanne Prybutok
Mrs. Margaret Rafal
Mr. & Mrs. Earl Rafal
Mrs. Edythe L. Rapkin
Mr. & Mrs. Thomas Ray
Mr. Ernest Reiver
Mrs. Renee C. Richard
Dr. & Mrs. Edward G. Richman
Joseph H. Richman, M.D.
Mr. & Mrs. Gary G. Robbins
Mr. Jordon N. Rosen & Mrs. Sharon S. Rosen
Mrs. Sue W. Rosen
Mrs. Julie Rosenblatt
Mrs. Lillian Rosenthal
Dr. Melvin J. Rosenthal
Mr. & Mrs. Joseph Rosenzweig
Mr. & Mrs. Louis Roshberg
Mr. & Mrs. Stanley I. Ross
Mr. Desmond V. Rothenberg
Mr. & Mrs. Harvey Rovine
Mr. Harvey M. Rubenstein & Mrs. Anne R. Rubenstein
Ms. Toby Rubenstein
Mr. & Mrs. Barry Rubin
Mr. Jeffrey S. Rudolph & Mrs. Gail E. Rudolph
Mr. & Mrs. Charles A. Salkin
Mr. Lionel D. Saltzberg
Mr. Gordon Saltzman
Cantor & Mrs. Andrew Salzer
Mr. Arthur H. Sanders & Mrs. Evelyn P. Sanders
Mrs. Helen Sayer
Mr. & Mrs. Jay Schatz
Mr. & Mrs. Paul R. Scherer
Mr. David Schlecker
Mr. & Mrs. Noah Schreiber
Mr. & Mrs. Barton Schwartz
Mr. Harvey D. Schwartz
Mr. Michael M. Schwartz & Mrs. Ina M. Schwartz
Mr. & Mrs. Steven Schwartz
Mr. & Mrs. George E. Scott
Mr. & Mrs. Stephen Seidel
Dr. & Mrs. Richard Sharf
Mrs. Gladys Sharpoff
Mr. Marc W. Sheffler & Mrs. Sylvia J. Sheffler
Dr. & Mrs. Richard L. Sherry
Mr. & Mrs. Robert N. Silber
Mrs. Ethel Silnutzer
Mrs. Arline Silverman
Mr. Isadore N. Silverman
Mr. & Mrs. Glenn L. Silverstein
Albert L. Simon, Esq.
Mr. Philip Simon
Mr. & Mrs. Terry B. Sklar
Mr. & Mrs. David Sklut
Mr. Jonathan L. Sloan
Mr. Samuel Sloan & Mrs. Dorothy Sloan
Dr. & Mrs. Stewart A. Slomowitz
Mr. Leonard L. Slutsky
Eileen F. Snyder, D.D.S.
Mr. Joseph Sommers & Mrs. Selma Sommers
Mr. & Mrs. Jack B. Spinner
Mr. & Mrs. Mark M. Stein
Mrs. Rose Stolper
Mrs. Sadie Tanenbaum
Mr. Stephen R. Tanny & Mrs. Helene R. Tanny
Mr. Daniel Tanzer & Mrs. Hinda Tanzer
Mr. & Mrs. Charles Tarrington
Mr. Ira M. Tartack & Mrs. Mara R. Tartack
Ms. Gloria Taub
Mr. & Mrs. Max Taytelbaum
Mr. & Mrs. Robert M. Temko
Dr. & Ms. Stanley Temple
Ms. Marla Tocker
Miss Eleanor Topkis
Mrs. Jeanette S. Toumarkine
Mr. Larry Trachtman & Mrs. Bernice Trachtman
Mr. William D. Wasserman & Mrs. Patricia M. Wasserman
Mr. & Mrs. Elliott E. Waxman
Mr. Philip Weinberg & Mrs. Sheila Weinberg
Mr. Barry & Dr. Ruth Wexler
Mrs. Joan Whipple
Ms. Joan T. White
Mr. & Mrs. Howard Winston
Mr. Henry O. Wirtschafter

Ms. Faith A. Wohl
Mr. Michael S. Wolfe
Mrs. Charlotte Wormser
Dr. Edward S. Yaliove
Mr. & Mrs. Nathan Zahn
Ms. Dory Zatuchni
Mr. & Mrs. Joseph Zelson
Mr. Edward Zeranski
Mr. Steven B. Zimmerman & Mrs. Laurie E. Ross
Mr. & Mrs. David S. Zinman
Mrs. Esther R. Zinman
Mr. & Mrs. Howard Zwick

AKIBA

Anonymous (127)
Mrs. Betty Abrahams
Mrs. Susan G. Abramson
Mrs. Sara Adler
Miss Frances B. Aeronson
Mr. & Mrs. Paul S. Akell
Mr. & Mrs. Charles Albers
Mrs. Felisha E. Alderson
Mr. Aleksey Alekseyev
Dr. Michael A. Alexander
Dr. Amy Alfred
Mrs. Joyce J. Aloisi
Mr. & Mrs. Norman H. Alper
Mr. & Mrs. Paul M. Altman
Mr. & Mrs. Paul D. Amer
Mr. David Ames
Dr. & Mrs. Mart J. Amick
Mr. & Mrs. Mark Anderson
Mrs. Sandra L. Anderson
Bennie & Mollie Appelbaum
Mr. & Mrs. Morris Ariff
Ms. Anna Arlicks
Mr. & Mrs. Gerald Ashman
Dr. & Mrs. David August
Mr. & Mrs. Richard W. Aultman
Mr. Alexander Babinskaya
Ms. Lilya Babinskaya
Mrs. Ludmilla Babinskaya
Mr. & Mrs. Mark J. Bacha
Mrs. Ida Bakalar
Mr. & Mrs. Leslie W. Balick
Mrs. Lillian Balick
Dr. Peter S. Bauchwitz
Mr. & Mrs. Joseph Bell*
Mr. & Mrs. Alexander Belokopyty
Mrs. Valerie Bender
Mrs. Hilda C. Bennett
Mr. Eric Berg & Mrs. Amy S. Berg
Mrs. Grace F. Berger
Ms. Staci D. Berger
Mr. Ben A. Berk & Mrs. Patti A. Berk
Mrs. Ann S. Berkman
Mrs. Myra Berkowitz
Mr. Harry L. Berlin
Mrs. Sylvia R. Berlin
Mr. & Mrs. Marvin Berman
Ms. Mindy Berman
Mr. & Mrs. Robert J. Berman
Mr. Sam Berman
Mrs. Sara S. Berman
Mr. David K. Bernstein
Mr. & Mrs. Joseph M. Bernstein
Ms. Fay B. Berry
Mr. Jerry M. Besbris & Mrs. Camille L. Besbris
Mrs. Erika G. Biloan
Mrs. Jayne G. Binder
Mrs. Lillian Binder
Dr. Philip M. Blatt & Ms. Paula Breen
Mr. & Mrs. Jerome J. Blau
Mrs. Florence B. Bleiberg
Mr. Gerald Bloch
Mr. & Mrs. Alvin Bloom
Mr. Alan Blum & Mrs. Lauren G. Blum
Mr. Donald E. Blum
Mr. Harry Blum
Mr. & Mrs. Ronald E. Blum
Mrs. Ruth S. Blume
Dr. George T. Bodnar & Mrs. Ari Bodnar
Mr. David Bookspan & Phyllis Bookspan, Esq.
Mrs. Victoria Boyd
Dr. B. Brachman & Mrs. Jean K. Brachman
Mrs. Bertha Brandstadter
Mr. & Mrs. Sanford Brandt
Mr. & Mrs. B. Randall Brenner
Mr. & Mrs. Leo Brenner
Mr. & Mrs. Opher Breslauer
Mr. Matthew P. Brill & Ms. Theresa L. Burnett
Mrs. Alane Brittingham
Mrs. Nancy T. Brohawn
Mr. & Mrs. Harvey B. Brown
Miss Jennifer Brown
Mr. & Mrs. William Brown
Ms. Meryl H. Brownstein
Miss Ruth Bucholtz
Mrs. Molca P. Budin
Mr. & Mrs. Henry E. Burnar
Mrs. Rose R. Burneson

Mr. Sol Buzgon & Mrs. Ruth S. Buzgon
Mr. Natan Paradise & Ms. Donna M. Byrne
Ms. Bernadine K. Camin
Mrs. Maryke Castro
Mrs. Arleen S. Cavall & Mr. James R. Cavall
Mr. Michael Chajes & Mrs. Elizabeth A. Chajes
Mr. & Mrs. Michael S. Chambers
Mr. Harry J. Chasanov & Mrs. Jennie Chasanov*
Dr. David & Mrs. Rosalyn Chasin
Mrs. Goldie W. Chavenson
Mr. & Mrs. Arkady J. Chechik
Mr. Craig Cherrin
Mrs. Eileen Chinsky
Mrs. Renee Chirtel
Mr. Paul Chudnowski
Mr. & Mrs. Joseph F. Cicala
Mrs. Irma S. Clemens
Mr. & Mrs. A. Lionel Clingman
Mrs. Beatrice Cohen
Mrs. Bernice Cohen
Mr. Howard K. Cohen & Mrs. Eileen D. Cohen
Mr. Hilton Cohen & Mrs. Rochelle Cohen
Mr. Joseph Cohen
Mr. Joseph L. Cohen & Mrs. Mildred Cohen*
Mrs. Mae Cohen
Mrs. Marlene Cohen
Mrs. Molly Cohen
Mr. Nathan L. Cohen
Ms. Sarah Cohen
Mrs. Shirley E. Cohen
Mr. & Mrs. Gerald J. Comins
Mrs. Helen R. Concors
Dr. Leonard Cook
Mr. Adam Cooper
Ms. Pamela B. Cowan
Mr. & Mrs. Charles J. Cramer
Dr. Margaret W. Crouch
Mrs. Edith R. Cutler
Mr. Jeremy M. Danneman
Ms. Emily Davis
Dr. Fredric M. Davis
Mr. & Mrs. Joseph Davis
Mrs. Lori Davis
Mr. & Mrs. Bruce L. De Witt
Mrs. Grace L. DeCherney
Mr. & Mrs. Frank Defroda
Mr. Jason Deitcher
Mr. & Mrs. Melvin Dimmer
Mr. & Mrs. Mitch Dior
Mr. & Mrs. Steven R. Director
Mrs. Judith H. Dolinger
Mr. & Mrs. Sergei Dolinsky
Mr. Jeffrey N. Dombchik
Mr. & Mrs. John H. Donaghy
Mrs. Eileen Dorman
Mr. Walter S. Dubner & Ms. Jia-Ni Chu
Selma Cohen Dubyn
Mrs. Julia Dugan
Mr. Ira S. Dunoff
Dr. & Mrs. Steven A. Ebner
Mr. Harvey S. Eckell & Mrs. Arlene N. Eckell
Miss Sylvia Edelberg
Mrs. Raymonde Edwards
Mr. Abraham G. Emanuel
Dr. Jerald Eng
Mr. & Mrs. Raymond Engel
Marsha J. Epstein, Esq.
Dr. & Mrs. Eric S. Esbitt
Rabbi & Mrs. Mel Eskovitz
Mrs. Evelyn Ettenger
Mrs. Freda Evans
Mr. Steven C. Falchuk
Mrs. Blanka Falek*
Mr. Steven E. Faller
Mr. & Mrs. George Feldman
Mr. & Mrs. Herman Feldman
Mr. & Mrs. Abraham Ferdman
Mr. Seymour Fertig & Mrs. Mildred Fertig
Mr. & Mrs. Alex Field
Ms. Shirley L. Figenshu
Mr. & Mrs. Jerry Fine
Mr. Samuel J. Finesmith
Dr. David M. Fink
Dr. Fred S. Fink
Ms. Stacey Fink
Dr. Bruce Finkelstein
Dr. Harris Finkelstein & Ms. Jill R. Lock
Mr. & Mrs. Brian E. Fischel
Mr. & Mrs. Carrol L. Fischel
Miss Charlotte Fischer
Mrs. Edna Fischer*
Ms. Raina H. Fishbane & Mr. Charles F. Walker
Ms. Maria R. Fisher
Mr. & Mrs. Phillip B. Fishgold
Ms. Anna Fleming
Mr. Ethan U. Fletcher
Mr. & Mrs. Michael Foster
Mrs. Estella H. Frankel

Mrs. Ann E. Freedman
Mr. Norman I. Freeman & Mrs. Rhoda F. Freeman
Mr. Rubin & Mrs. Martha Freeman
Mr. & Mrs. Robert M. Frey
Mr. & Mrs. Ronald J. Fried
Mrs. Diana Friedman
Ms. Leslie Friedman
Mrs. Phyllis Friedman
Mrs. Rhoda M. Friedman
Mr. & Mrs. Gerald S. Frim
Mr. David J. Fruchtman
Mr. & Mrs. Philip Fuhrman
Mrs. Tina S. Furman
Ms. Laura Gabbert
Mrs. Shelley Gaertner & Mr. Samuel Gaertner
Mrs. Ilene Gallagher
Mr. & Mrs. Elya Galperin
Mr. & Mrs. Henry Galperin
Mr. & Mrs. Joseph Galperin
Mr. & Mrs. Yakov Galperin
Mr. & Mrs. Robert J. Gamiel
Mrs. Anita F. Garfinkel
Mr. & Mrs. William T. Garfinkel
Mr. & Mrs. Jeffrey W. Garland
Dr. & Mrs. Howard Garland
Mrs. Lia Gayduk
Mr. & Mrs. Mark Gayduk
Mr. Joseph Gelman
Dr. Malvin Gelof & Mrs. Helen Gelof
Mrs. Gertrude Genevitz
Mr. & Mrs. Boris Genyuk
Mr. Melvin M. Gershman & Mrs. Renee K. Gershman
Mrs. Rae F. Gerstine
Mr. & Mrs. David Gesterak
Mr. & Mrs. Michael Ginsburg
Mr. & Mrs. Yefim Glazamitsky
Mr. & Mrs. Morris D. Glazier
Ms. Ida Glazomitskaya
Mr. Martin R. Glick & Mrs. Estelle D. Glick
Mr. & Mrs. David Glickman
Mr. Howard D. Glicksman & Ms. Lois H. Bronstein
Mrs. Charlotte C. Gluckman
Mr. Joseph Godowsky & Mrs. Sarah Godowsky
Mr. & Mrs. Gary Gold
Mrs. Sylvia Goldbacher
Mr. David E. Goldberg & Mrs. Joan E. Goldberg
Mrs. Ada-C. Golden
Mrs. Rhea Golden
Mr. Joshua Goldenberg
Mrs. Rae Goldenberg
Mr. Jack Goldfeder & Mrs. Janine Goldfeder
Mr. & Mrs. Martin Goldman
Mr. Peter A. Goldman
Mrs. Rose A. Goldman
Mr. & Mrs. Adam Goldstein
Mrs. Ida Goldstein
Miss Marie J. Goldstein
Mrs. Robin Goldstein
Mr. & Mrs. Anatoly Golod
Mr. & Mrs. Vladimir Golod
Ms. Shari Golub
Mr. Steven Goodhart & Mrs. Susan Goodhart
Miss Bessie Goodlevege
Mr. & Mrs. David R. Goorland
Ms. Glenna Gordon
Mr. & Mrs. Norman Gordon
Mrs. Dena Gorrin
Mr. Jacob Grant
Ms. Nicole Grant
Mr. & Mrs. Steven Grant
Mrs. Fannie Green
Dr. John W. Green & Ms. Marianne Ehrlich-Green
Mr. Percy Green & Mrs. Ernestine Green
Mr. & Mrs. Vladimir W. Green
Mr. & Mrs. Donald G. Greenberg
Ms. Marcy Greenberg
Mrs. Ruth Greenhouse
Ms. Ann Greenstein
Ms. Debra Greenstone
Mrs. Geraldine Greenwald
Mr. & Mrs. Martin Greer
Mr. & Mrs. Gennady Gribou
Ms. Rita Grinberg
Mr. & Mrs. Richard Gropper
Mr. & Mrs. Harry Gross
Mr. Rodman Gross & Mrs. Sonya Gross
Mr. & Mrs. Dimitry Gusakov
Mr. Mitchell Guttentplan
Mrs. Belle K. Haberman
Mr. & Mrs. Rick Hall
Mrs. Dorma Haller
Mrs. Ethel B. Hammer
Mrs. Alma Handelman
Mr. Stuart B. Handler & Mrs. Phyllis Handler
Mrs. Theresa Harig
Mrs. Jacqueline S. Harad

Abraham...\$50,000 and more ✨ Sarah...\$25,000 - \$49,999 ✨ Isaac...\$18,000 - \$24,999 ✨ Rebecca...\$10,000 - \$17,999
 ✨ Jacob...\$5,000 - \$9,999 ✨ Leah...\$1,800 - \$4,999 ✨ Rachel...\$1,000 - \$1,799 ✨ Judah...\$613 - \$999
 ✨ Deborah...\$360 - \$612 ✨ David...\$180 - \$359 ✨ Ruth...\$100 - \$179 ✨ Akiba...\$1 - \$99

1996 UJA/Federation Campaign Honor Roll (continued)

- Mr. Richard H. Harris
Mr. Gerald J. Harwitz & Mrs. Linda G. Harwitz
Mr. & Mrs. Robert Heckel
Mrs. Veronica Heiligman
Mrs. Barbara Heimann
Ms. Bonnie J. Helfand
Ms. Keri J. Helfand
Mr. & Mrs. David Heller
Mr. & Mrs. Alan Hendel
Mr. & Mrs. Julius M. Hendel
Mr. & Mrs. Sidney Hendler
Mrs. Joyce S. Herron
Mr. Robert Hershkowitz & Mrs. Naomi Hershkowitz
Mr. & Mrs. Douglas M. Hershman
Mr. & Mrs. Jeffrey M. Herst
Mr. & Mrs. Steven Hertzoff
Mrs. Rosemarie Hilsenrad Nichol
Mr. E. G. Hirschbein
Mrs. Anna J. Hirshout
Ms. Ellen Hochheiser
Mr. & Mrs. Joseph Hoffman
Mrs. Betty Hoffmann
Mr. & Mrs. Michael A. Hofman
Mr. Edward L. Honey
Miss Estelle Hopkins
Mr. & Mrs. Alfred Horowitz
Mrs. Rita Horwitz
Mr. & Mrs. Romeo J. Hubner
Mrs. Frieda D. Hurschman & Mr. Paul C. Hurschman
Mr. & Mrs. R. E. Hutz
Ms. Naomi C. Hyde
Ms. Keiko T. Iacono
Ms. Jill Itzkowitz
Mrs. Betty D. Jacobs
Mr. Jeffrey J. Jacobs
Ms. Stacy Jacobs
Mrs. Edith Jacobsohn
Mrs. Norma C. Jacobson
Mr. & Mrs. Bruce D. Jaffee
Mr. & Mrs. Alan Jaffey
Laura Jarvis, R.N.
Mr. Phillip C. Jones
Mrs. Elizabeth Kahn
Mrs. Harriet Kahn
Mr. Henry Kahn & Mrs. Edith Kahn
Mr. & Mrs. Jules S. Kahn
Mr. Theodore Kamen
Mr. & Mrs. Michael J. Kamps
Mr. & Mrs. Charles Kane
Mrs. Jacqueline Kanofsky
Mr. & Mrs. David T. Kaplan
Ms. Lieba T. Kaplan
Mr. Morton Kaplan
Mr. Allan Karron & Mrs. Joan Karron
Mrs. Claire Karten
Mr. & Mrs. Arthur S. Katz
Mrs. Minerva Katz
Ms. Rochelle Katz
Mrs. Harriet E. Kaufman
Mrs. Janet E. Kaufman
Mrs. Lillian Kaufman
Mr. & Mrs. Charles Kaufmann
Mrs. Nancy R. Keith
Mr. Paul Kelner
Mrs. Lillian Kemper
Ms. Regina J. Kerr
Ms. Bella Kessler
Mrs. Natalie B. King
Mr. Aron Kinnus
Mr. & Mrs. Christopher Kinsella
Mr. & Mrs. Alan S. Kirschner
Mrs. Dorothy Kirshner
Mrs. Frances Kirshner
Mr. Herbert H. Kirshner
Mr. Leonard Kittner
Mr. & Mrs. Albert Klein
Mr. & Mrs. Arnold D. Klein
Mr. Benjamin Klein
Mr. & Mrs. David Klein
Mrs. Frances Klein
Dr. Joel & Dr. Shirley Klein
Mr. Joshua Klein
Mr. & Mrs. Philip Klein
Mr. & Mrs. Theodore M. Klein
Mr. & Mrs. Robert Kleinburd
Mrs. Debra S. Kling
Mr. & Mrs. Edward Knapper
Mrs. Bessie G. Knapper
Ms. Gail Knepler
Mr. Phil Koff
Mr. & Mrs. Leonid Kogan
Dr. Irving & Dr. Rita Kogon
Mr. Harry Kolber & Mrs. Ruth Kolber
Ms. Beth Koniver
Mr. & Mrs. Herbert H. Konowitz
Mrs. Esther Kopolovic
Mr. & Mrs. Samuel Kramer
Mr. & Mrs. Louis B. Krasowitz
Mr. Aryeh J. Kuller
Mrs. Lillian Kupferman
Mrs. Rosalie B. Kurfist
Mrs. Roslyn Kusheloff
Mr. Avram Lancer
Mr. & Mrs. Milton Landis
Mr. Herbert Langerman
Mr. & Mrs. Allen H. Lankin
Mr. & Mrs. Robert LaRossa
Mrs. Lita M. Latham
Mrs. Belle Lavine
Mr. & Mrs. David S. Lawton
Mrs. Sally Lazar
Mr. David A. Leber
Mr. & Mrs. Steven Leberstien
Ms. Pauline LeBoritz
Dr. Harry A. Lebowitz & Dr. Penelope Neckowitz
Mrs. Marsha Lee & Miss Timnah Lee
Mrs. Ruth Leibowitz
Mr. & Mrs. Harvey Lessin
Mrs. Marion Levenberg
Mr. Benjamin Levenson
Mr. Joshua Levenson
Mr. & Mrs. Bruce Levin
Ms. Janet B. Levin
Miss Jill Levin
Mrs. Daryl B. Levine
Mrs. Dolores Levine
Ms. Gail S. Levinson
Mr. & Mrs. Charles E. Levithan
Mr. & Mrs. Leonard B. Levithan
Mr. & Mrs. Michael S. Levithan
Mr. & Mrs. Mark J. Levitt
Ms. Barbara K. Levy
Mr. & Mrs. Howard Levy
Mrs. Martha Levy
Miss Shirley Levy
Mr. & Mrs. Jeffery C. Lew
Miss Helen Lewis
Mr. Robert A. Lewis
Mrs. Anna Liebman
Mr. Maurice J. Linett & Mrs. Barbara S. Fisher
Mr. Leonard L. Lippman* & Mrs. Hermiah N. Lippman
Mrs. Molly G. Lipschultz
Mr. Jack Lisansky
Mr. & Mrs. George Livingston
Mr. Roy H. & Mrs. Ann R. Lopata
Miss Janet R. Loper
Mr. Abraham Lubin
Mr. & Mrs. Harry Lubin
Mr. Bertram Lubliner
Ms. Mary L. Lutz
Mr. & Mrs. Thomas H. Magee
Dr. Gary Magram
Mrs. Frances Maisel*
Miss Stefanie Makar
Ms. Renee Malcom
Ms. Jeri Mandel
Mr. Bernard Mandelberg
Rev. & Mrs. Samuel Mandelberg
Mr. William Margolin & Mrs. Edythe Margolin
Mr. Steven M. Marino & Ms. Carol A. Hertzoff
Mr. & Mrs. Leonard Markovitz
Miss Faye Markowitz
Edith & Isaac Markowitz
Mr. Martin A. Markowitz
Mr. Benjamin Markowitz* & Mrs. Mildred Markowitz
Mr. Solomon Markowitz & Mrs. Anne Markowitz
Dr. Barnard Marks
Mrs. Robin D. Marks
Mr. & Mrs. Joseph V. Marra
Mr. & Mrs. Alfred Marzouk
Mrs. Genrietta Mazina
Mr. & Mrs. Vitaly Mazur
Mr. & Mrs. Edward McBride
Mrs. Edith McDonald
Mrs. Jo Ann McKee
Mr. & Mrs. Norman McLeod
Ms. Diana McNair
Mr. & Mrs. Alvin Meizell
Mr. Ray Mendelsohn & Mrs. Phyllis Gramlich
Mr. & Mrs. Marvin Mesibov
Mr. Sam Messing & Mrs. Shirley Messing
Mrs. Anna S. Metzker
Mr. & Mrs. Harold Meyers
Mrs. Claire S. Michelman
Mr. Stephen H. Michlin
Mrs. Evelyn Miller
Mr. David B. Miller & Mrs. Lorraine G. Miller
Mr. & Mrs. Stephen Miller
Ms. Abbe L. Milstein
Mrs. Stacey Miranda
Mr. Burton C. Mittelman
Mrs. Ester Moskovic
Dr. Stuart Moskowitz & Dr. Hilna Moskowitz
Mr. & Mrs. Robert S. Moyer
Mr. & Mrs. Jerome Nachlis
Ms. Gloria Nadel
Mr. Lee M. Nadell & Mrs. Lillian Nadell
Ms. Eva Nagel
Mr. & Mrs. Alan Nagelberg
Ms. Jessica Neipris
Miss Rebecca Neipris
Mr. Ben Nemser
Ms. Sharon Nemser
Mr. & Mrs. Michael Nesnow
E. T. Neumann*
Mrs. Roslyn S. Newborn
Mr. Craig Newman
Mr. Michael Newman
Mrs. Eleanor B. Niederhauser
Ms. Mona J. Offer
Mr. & Mrs. Isaak Okun
Mrs. Barbara S. Oncay
Mr. & Mrs. Alexander Openstone
Ms. Millie Openstone
Miss Iris Y. Oren
Mr. Abraham Orgielsky & Mrs. Faga A. Orgielsky
Mrs. Ellen Orkin
Mr. & Mrs. Peter Osofsky
Dr. Gerald Oster & Mrs. Linda S. Oster
Mr. & Mrs. Jayson G. Oster
Mr. & Mrs. Jeffrey M. Ostroff
Mrs. Anne Oxfield
Mr. & Mrs. Larry Ozer
Mr. Steven Paikin
Mr. Joel E. Panitz
Mr. George M. Paris
Mr. & Mrs. Rudolph Pariser
Mr. & Mrs. Robert Pasteris
Mrs. Zeld Pearl
Dr. & Mrs. Stephen A. Pearlman
Mr. S. D. Peress
Mr. & Mrs. Leonid Pettyuk
Ms. Dara B. Pezzner
Dr. Anne E. Pfister
Mr. & Mrs. Mark J. Pilnick
Mrs. Nancy I. Pincus
Mrs. Melanie Pistilli
Mr. & Mrs. Jacob S. Plafker
Mr. Joel C. Plaut
Mr. & Mrs. Mark A. Ploener
Mr. & Mrs. Kevin D. Plotkin
Mr. James W. Plummer & Ms. Judith S. Isaacs
Mrs. Henrietta Pogach
Mr. Richard R. Polleck & Mrs. Laurie S. Polleck
Mrs. Nina Polyak
Mr. & Mrs. Samuel Pratt
Mr. Julian H. Preisler
Mrs. Anita Press
Mr. & Mrs. Barry S. Price
Mr. Robert M. Price & Mrs. Georgene A. Price
Mr. & Mrs. Lewis Pritzker
Ms. Annette Probststein
Mr. & Mrs. Jerry Rabinowitz
Mr. Eric O. Raphael* & Mrs. Mathilde F. Raphael
Mr. & Mrs. Charles Reichwald
Mr. & Mrs. Leslie Reidel
Mr. & Mrs. Harold Reisman
Mr. & Mrs. Fred M. Reiter
Mr. Marc L. Reitzes & Mrs. Barbara R. Reitzes
Mr. & Mrs. Tom Resch
Mr. & Mrs. Abram Reznik
Mr. & Mrs. Alex Reznik
Mr. & Mrs. Neal Robin
Ms. Robin S. Robins
Mrs. Nina Roffman
Mr. Frank Rohrbacher, Jr. & Mrs. Susan B. Rohrbacher
Mr. & Mrs. Gary Romer
Mr. Joseph V. Rooksby-Boyle
Mr. & Mrs. Harry Rose
Leonard & Barbara Rosen
Mrs. Betty L. Rosen
Mr. & Mrs. Frank Rosen
Mr. & Mrs. Neil Rosen
Mr. & Mrs. Matthew Rosenberg
Rabbi Abraham Rosenblum
Mr. Jeff Rosenblum
Mrs. Irene Rosengard
Mrs. Pauline Rosenthal
Mrs. Regina E. Rosin
Mrs. Bonnie R. Ross
Mr. & Mrs. Bryan J. Roth
Mr. & Mrs. Jay Rotholz
Mrs. Martha J. Ruane
Mr. & Mrs. Harvey M. Rubenstein
Mrs. Dora F. Rubin
Mrs. Fay Rubin
Mr. & Mrs. Ellis Ruderman
Mr. & Mrs. Michael L. Rudolph
Mr. & Mrs. Albert G. Sachs
Mrs. Jean Sachs
Ms. Debbie Sadoff
Mrs. Esther L. Safran
Mr. & Mrs. Mark Saifer
Ms. Rachel E. Saifer
Ms. Joan Saks
Mr. & Mrs. William C. Salamone
Mr. Norman S. Salus & Mrs. Mildred Salus
Dr. & Mrs. Richard A. Salzstein
Mr. Marc R. Samonisky
Mrs. Clara Samuels
Mr. & Mrs. Ron Samuels
Mr. & Mrs. Sam L. Samuels
Miss Deborah Sands
Ms. Julie Topkis Scanlan
Mrs. Esther A. Schaffer
Mrs. Jean W. Schendowich
Mr. & Mrs. Arthur L. Scherer
Mrs. Gertrude Schiff
Rabbi & Mrs. Ira J. Schiffer
Ms. Evelyn Schilit
Mr. & Mrs. Jon Schladen
Dr. & Mrs. Stephen Schlesinger
Mrs. Ethel Schlitten
Mrs. Barbara Schneider
Mr. & Mrs. Francis Schneider, Jr.
Mrs. Hannah Schneider
Mr. Joshua Schneider
Mr. Itzie N. Schoenberg
Mr. Joshua Schoenberg
Mr. & Mrs. Dave I. Schonbach
Ms. Harriet Schultz
Mr. Arthur Schutzman*
Mr. & Mrs. Allen Schwartz
Mrs. Barbara B. Schwartz
Mrs. Eve Schwartz
Dr. & Mrs. Howard Schwartz
Mrs. Selma Schwartz
Ms. Phyllis B. Schweidel
Mr. & Mrs. Sheldon Schweidel
Mr. & Mrs. Thomas Seidel
Ms. Carolyn K. Seldner
Mr. & Mrs. Joshua Selekman
Ms. Irene Setz
Mrs. Robin Brookhart Shane
Mrs. Esther Shapiro
Mrs. Lorna Shapiro
Mr. Marilyn C. Shapiro
Mrs. Pauline V. Shapiro
Mr. Scott Shapiro & Mrs. Lori Shapiro
Mr. & Mrs. Ben Shaw
Mr. & Mrs. Michael E. Sherman
Mr. Samuel Shore*
Mr. David Shribman
Mr. & Mrs. Alexander Shtarker
Dr. Daniel E. Shuller
Mr. Dale A. Shuirman & Mrs. Patricia S. Shuirman
Mr. & Mrs. Andrey Shulkov
Dr. Irene G. Shur
Mr. & Mrs. Norman B. Shurak
Eileen & Hank Sidlow
Ms. Gwen M. Sigler
Mrs. Rita Silberman
Mr. Joseph E. Silver & Mrs. Winnie Silver
Mr. & Mrs. Geoffrey D. Silverberg
Mrs. Erna Simon
Mr. Max Simon & Mrs. Beverly B. Simon
Ms. Michelle Simon
Mrs. Esther Sitzer
Mr. & Mrs. Martin B. Sklar
Ms. Ann L. Sklut
Ms. Diane Sklut
Mrs. Edith F. Sklut
Mr. Michael S. Sklut
Ms. Mollye Sklut
Mrs. Mollye C. Sklut*
Mrs. Norma J. Sklut
Mrs. Sally Sklut
Mr. Manuel J. Skversky & Mrs. Irma K. Skversky
Mr. & Mrs. Alan H. Smith
Dr. Jay B. Smith
Mrs. Judith A. Smith
Mr. & Mrs. Mitchell Smith
Rabbi & Mrs. Eliezer G. Sneiderman
Mr. & Mrs. Alvin Snyder
Dr. & Mrs. Bruce H. Sokoloff
Mr. Michael S. Solomon
Mr. & Mrs. Seymour C. Solomon
Ms. Charlotte Sontchi
Mr. Saul Sophrin & Mrs. Helen Sophrin
Mr. Jordan D. Sopinsky
Ms. Kristi Sorkin
Mr. David Spector & Mrs. Rayzelle W. Spector
Mrs. Pearl V. Spector
Ms. Debbie Spivak
Mr. & Mrs. Frank A. Sprintz
Mrs. Gladys Staub
Mr. & Mrs. James Stearns
Mrs. Elaine S. Stein
Ms. Marian Stein
Mr. Marshall Steinberg
Mr. & Mrs. Simon Steinberg
Mr. & Mrs. Jay A. Stellenberg
Ms. Evelyn Stevens
Ms. Irma Stevens
Mr. Michael R. Stiebel
Mrs. Annabel G. Stone
Mr. & Mrs. Carl H. Strauss
Mrs. Lillian Strauss
Mr. Nathan Strauss
Mr. & Mrs. John C. Summers
Mrs. Celia Swinger
Mr. & Mrs. Morris Swinger
Mr. & Mrs. Samuel Swinger
Mr. & Mrs. Stuart M. Swinger
Mr. Ian Sydell
Dr. & Mrs. Stephen W. Syken
Mr. & Mrs. Ephraim Tal
Mr. Martin I. Talmud
Ms. Katie Tanzer
Miss Miriam D. Tartack
Miss Sarah Elayne Tartack
Mr. Joel Tau
Mr. Andrew Taub
Mr. Isadore Teder & Mrs. Eva Teder*
Mr. & Mrs. Joel Teder
Mrs. Ethel Teller
Mr. & Mrs. Farhad B. Tehrani
Mr. & Mrs. Charles Till
Mr. & Mrs. Paul Timmeney
Ms. Tara L. Tisinger
Mr. & Mrs. Bruce D. Tobiansky
Mr. Arthur Tollin & Mrs. Julia F. Tollin
Mrs. Ethel Topkis
Dr. Arthur W. Travis & Mrs. Judith Travis
Mr. Martin J. Uffner
Mr. & Mrs. Benjamin S. Umansky
Mr. & Mrs. Michael Urban
Mr. & Mrs. William H. Vaughn
Mr. & Mrs. Boris L. Vekker
Mr. Roman Vinokur
Ms. Linda Vodovis
Rabbi & Mrs. E. Vogel
Mrs. Rose Volkman
Mr. Jeffrey Wallis
Dr. Robert & Dr. Rhonda Walter
Mrs. Minna N. Wasserman
Ms. Mira B. Wasserman
Mr. Phil Weinberg
Mr. & Mrs. Richard M. Weinberg
Ms. Michele E. Weiner
Mr. & Mrs. Jeffrey Weingartner
Dr. & Mrs. Edward A. Weinstein
Mrs. Mary Weinstein
Mr. Seymour Weinstein
Mr. Morris Weintraub & Mrs. Grace Weintraub
Mr. Michael H. Weiser
Ms. Deborah E. Weiss
Mr. Howard Weissman & Mrs. Eva Weissman
Mrs. Marian Weissman
Mr. William S. Weissman
Mr. & Mrs. Martin L. Werde
Mrs. Edith R. Wexler
Mrs. Mary B. Whipple
Mr. & Mrs. Kenneth P. White
Mr. Ernest R. Wilder & Mrs. Sylvia E. Wilder
Mrs. Helen B. Wilson
Dr. & Mrs. Gary B. Witkin
Mr. & Mrs. Sanford Wohlman
Mr. Jacob E. Wolf & Mrs. Natalie E. Wolf
Ms. Merrily A. Wolf
Mrs. Evelyn Wolff
Mr. & Mrs. Stanley Wolin
Mrs. Bertha Wolinsky
Mr. Eugene H. Wolinsky & Mrs. Mildred Wolinsky
Mr. J. Robert Woods & Mrs. Barbara Woods
Mr. & Mrs. John R. Worrell
Mr. & Mrs. Marvin Yaffee
Mr. & Mrs. Michael Yampolsky
Mr. & Mrs. Alexander Yankelevich
Mr. Donald M. Yaras & Mrs. Frances P. Yaras
Mr. & Mrs. Gennady Yevell
Ms. Maya Yevell
Miss Ann B. Young
Mr. & Mrs. Allari R. Zaback
Mr. & Mrs. Frank Zaback
Mr. Jerome Zaback & Mrs. Charlotte Zaback
Mr. Elias Zasloff
Miss Nancy Zetlin
Mr. & Mrs. Lance K. Ziering
Ms. Ruth Zimmerman
Mr. & Mrs. Michael A. Zinn
Mrs. Daniel Zlatkin
Mr. Richard M. Zuckerman
Mr. Edward G. Zukoff
Mrs. Frances M. Zurkow
Mrs. Henrietta Zutz
Ms. Ann Zweigle
Mr. & Mrs. Andrew L. Zydner

* deceased

Abraham...\$50,000 and more ☆ Sarah...\$25,000 - \$49,999 ☆ Isaac...\$18,000 - \$24,999 ☆ Rebecca...\$10,000 - \$17,999
 ☆ Jacob...\$5,000 - \$9,999 ☆ Leah...\$1,800 - \$4,999 ☆ Rachel...\$1,000 - \$1,799 ☆ Judah...\$613 - \$999
 ☆ Deborah...\$360 - \$612 ☆ David...\$180 - \$359 ☆ Ruth...\$100 - \$179 ☆ Akiba...\$1 - \$99

MORE

NEWS

NACHES



Left, Palestinian young men throw stones toward Israeli soldiers inside the "casbah" area of the city, June 18, as unrest continued for the fifth consecutive day. PLO chairman Yasser Arafat planned in advance the recent bloody riots in Hebron, according to senior Israeli defense establishment officials, ARMY RADIO reports. Several days before the disturbances began, Arafat reportedly appointed a new Hebron bureau head, by the name of Azmi Shuyuki. The Israeli sources claim that Arafat sent Shuyuki to the city in order to stir up the area. Information received indicated that Shuyuki recruited about 100 Fatah activists — some of them Palestinian policemen in civilian dress — and ordered them to hurl stones and Molotov cocktails at soldiers and policemen. Organized rioting in the Hebron market area has been going on from morning to evening for a full week. Right, a Palestinian burns a homemade Israeli flag as he taunts Israeli troops who are stationed down the street in this divided city, June 17. (Reuters)

Panitz Receives Award

Beth Panitz of Rockville, MD was recently awarded a Distinguished Achievement Award from the Educational Press Association of America for a feature article written by her for the ASEE PRISM magazine.

Beth is a graduate of Concord

High School and a 1992 Summa Cum Laude graduate of the University of Maryland, College Park. She is the daughter of

Bernard and Sylvia Panitz of Chalfonte and is married to Michael Edwards.

Fischel Anniversary

Mildred and Carroll Fischel of Wilmington celebrate their 50th wedding anniversary on June 22, 1997. They have three sons, Jared

of Salt Lake City, Utah, Brian and Richard both in Wilmington, and five grandchildren.

OBITUARIES

BERTRAM W. BRAUNSTEIN

Bertram W. Braunstein, 79, of 2302 Heather Court, Heathergreen Commons, Brandywine Hundred, died June 19 of heart failure at home.

Mr. Braunstein retired in 1987

from Emmett S. Hickman Co., a real estate agency in Wilmington. Previously, he owned a real estate agency in Wilmington.

He was the past president of the B'nai B'rith and Congregation Beth Shalom's Men's Club.

He served on the board of directors of the B'nai B'rith Elder Housing Program.

He was active in Congregation Beth Shalom and organized a Boy Scouts Troop there.

Survivors include wife, Hannah Arief Braunstein; daughter, Sandra F. Braunstein of Washington; son, George E. of West Bend, Wis.; sister, Beverly B. Simon of Wilmington; four grandchildren.

Contributions may be made to Congregation Beth Shalom or American Heart Association.

ANNA L. COHEN

Anna L. Cohen, 87, of Hollywood, Florida, formerly of Philadelphia, PA, died June 6. The former Anna Liss, she is survived by two daughters, Elaine Friedberg and Charlotte Bernstein; a brother, Joseph Liss, a sister Florence Mathason; eight grandchildren and nine great-grandchildren.

She was an active member of B'nai B'rith Women and Hadassah and also a volunteer tutor in elementary schools.

Her husband of sixty-six years, Harold L. Cohen, died April 19. She was the mother of the late Arthur Cohen.

HAROLD L. COHEN

Harold L. Cohen, 90, of Hollywood, Florida, formerly of Philadelphia, died April 19. The former owner of Louis-Harold Furniture Company in Center City Philadelphia, he served as president of the Jerusalem Lodge of B'nai B'rith for more than a decade.

He is survived by two daughters, Elaine Friedberg and Charlotte

Bernstein; three sisters, Ruth Olesster, Edna Friedman and Melba Kroll; eight grandchildren and nine great-grandchildren. He was the father of the late Arthur Cohen.

LEAH BERNHARDT FREEDENBERG

Leah Bernhardt Freedenberg, 84, of Margate, Florida died Tuesday, June 17, at home. Mrs. Freedenberg, formerly of Brooklyn, N.Y. worked as a school teacher in New York City for 25 years, retiring in 1973. Her first husband, Paul Bernhardt, to whom she was married for 32 years, died in 1970. She and her second husband, Morris Freedenberg, retired to Florida, where they lived for 24 years.

Survivors include husband, Morris Freedenberg, daughter Roberta Abelson of Tucson, Arizona, son Dr. Steven Bernhardt of Wilmington, sisters Evelyn Haykin of Margate, Florida, and Ruth Friedman of Southberg, Connecticut, brother Herbert Harris of Jerusalem, Israel. She is also survived by stepsons, Phillip Freedenberg of McLean, Virginia and Leonard Freedenberg of Waterville, Maine. She is survived by 10 grandchildren.

Contributions may be made to Albert Einstein Academy, 101 Garden of Eden Rd., Wilmington, DE 19803.

ROBERT H. WAHL

Robert H. Wahl, retired chief judge of the Court of Common Pleas who was one of the longest sitting judges in the state, died of cancer June 13 in Roxborough Memorial Hospital, Philadelphia.

Mr. Wahl, 77, of 2522 Eaton Road, Chalfonte, Brandywine Hundred, retired in 1993 after 36 years on the Court of Common Pleas. He was chief judge for 20 years.

Memberships included Congregation Beth Emeth, American Bar Association Commission on Standards of Judicial Administration and president of the American Judges Association.

Survivors include wife, Constance Wahl; daughters,

Lorraine Woldow of Elkins Park, Pa., Anita Barnes of Houston, Texas, and Alison Wahl of San Francisco; brother, Dr. Milton of Westwood; sister, Betty Goleburn of West Palm Beach, Fla.; four grandchildren. A brother, Mervin of Forest Hills Park, died in November.

Contributions may be made to the American Cancer Society or the American Heart Association.

ISAAC WALLE

Isaac Waller, 84, of Bellefonte, died June 15 in his residence in Milton & Hattie Kutz Home.

Mr. Waller was a self-employed butcher at Sanitary Meat Market in Wilmington for 57 years, retiring in 1992.

He was a member and an auxiliary cantor of Adas Kodesch Shel Emeth Congregation in Wilmington.

His wife Katherine, died in 1996.

Survivors include son, Jacob Waller of Jerusalem; daughter, Elaine Parker of Hastings-on-Hudson, N.Y.; brother, Zacharia Waller of Brooklyn, N.Y.; two grandchildren.

Contributions may be made to Milton & Hattie Kutz Home, 704 River Road, Wilmington 19809.

ISRAEL WEINER

Israel Weiner, 78, of 8 Ridgewood Circle, Ridgewood, Penny Hill, died June 14 in Christiana Hospital, near Stanton.

Mr. Weiner was co-owner of Al's Sporting Goods, Wilmington, for 38 years, retiring in 1983.

He was a member of Congregation Beth Shalom, where he belonged to its Men's Club and was commander of Harry Fineman Post and Delaware Post of the Jewish War Veterans.

Survivors include wife, Mildred Weiner; son, Stewart of Wilmington; daughter, Anne Barnes of Sewell, N.J.; brothers, Louis and George, both of Wilmington; sister, Bess Lobel of Wilmington; two grandsons.

Contributions may be made to the National Kidney Foundation of the Delaware Valley, Wilmington.

Schoenberg Memorial Chapels



In the hallowed tradition of our faith...

a dignified setting with reverence for customs and observances in strict accord with family wishes.

519 Philadelphia Pike
762-0334

CREATE A LASTING MEMORY
Plant Trees in Israel

A Circle of Trees	\$100
A Ring of 5 Trees	\$50
Individual Tree	\$10

A Living Link to the
Land of Israel



CALL (302) 655-5995
MARYLAND/DELAWARE REGION
4 Reservoir Circle, Baltimore, MD 21208

ALAN GOLD

BOB GOLD

B. Reibstein Memorials
Art Monument Company

1603 Jessup St.
Wilm, DE 19802
(302) 575-1450

Since
1895

1869 Cottman Ave
Philadelphia, PA 19111
(215) 725-2200

Delaware's Only Jewish Owned and Operated Monument Dealer
Manufacturing and Showroom in Delaware

ISRAEL
BONDS

For sale, reinvestment
and redemption
information call:

1-800-
752-5671

CALENDAR OF EVENTS

Entries for the Calendar of Events are due on the Thursday deadline, published in *The Jewish Voice*. Please provide entries in the same format as seen on this page. The *Jewish Voice* fax number is 427-2438.

Games Night - Tuesday, July 15, 7:30 p.m. Adults Games Night at Beth Shalom. Bring your board games and cards. Call the Synagogue for details, (302) 654-4462.

Forget-Me-Not Ball - The annual Forget-Me-Not Ball sponsored by the Auxiliary of the Kutz Home will be held on Saturday, September 20th at Arshat Hall, Wilmington Campus of the University of Delaware.

Invitations will be issued.

Holocaust Museum Trip - The Halina Wind Preston Holocaust Education Center is scheduling a bus trip to the US Holocaust Memorial Museum for teachers on Monday, August 25, 1997. Departure is from the Jewish Community Center or

Interstate 95 Rest Stop at 7:15 a.m. and return about 5:30 p.m. Cost is \$20.

A Holocaust scholar will present historical background during the ride to Washington. At the Museum teachers will receive an orientation to the Museum's exhibits as well as to the special educational resources that they can call upon to develop their lesson plans.

Workshop credit is available through the Delaware Teacher Center.

For information call Dan Weintraub at the Jewish Federation of Delaware (427-2100) or Delaware Teacher Center (1-800-282-8770).

Jewish Renewal Weekend at Elat Chayyim - The Delaware Jewish Community Renewal Weekend at Elat Chayyim will be November 21 - 23 (Fri-Sun.). Join us for a weekend of davening, learning, experiencing, sharing, growing, and community. The food is gourmet vegetarian. The setting is in the Catskill Mountains. Elat Chayyim is into the sixth year of running Jewish spiritual pro-

grams. The cost for the weekend (including housing, six meals and programming) is \$125.00 per person. To make a reservation, send a check for \$25.00 to Temple Beth El by June 30th. This weekend is co-sponsored by Temple Beth El and the Jewish Federation of DE. If you have any questions, please call Rabbi Kaplan at 366-8330.

Kutz Home Rededication - Plans are underway for the Rededication of the Milton and Hattie Kutz Home on Sunday, September 21st at 2 p.m. Everyone in the community is welcome. There will be a brief dedication program followed by guided tours of the new wings and the remodeled original building. Arlene Simon is chairman of the Committee planning the event. Other members of the Committee are: Phyllis Cobin, Miriam Edell, Faith Goldman, Howard Hoffman, Ellen Koniver, Louise Sloane, Alan Schoenberg and Ruth Weinstein. The Advisory Committee members are Eileen Conner, Karen Friedman, Joan Wachstein and Sheldon Weinstein.

Shabbat Under the Stars -

Friday, July 18, located at the JCC. Bring pareve or dairy dinner at 6:00. Services begin at 7:30. If rain, services will be at Beth Shalom at 7:30 p.m. at 1801 Baynard Blvd., Wilmington.

Skin Cancer Prevention - If you are interested in learning more about skin cancer prevention and sun safety, please stop by the JCC's "Sunshine Awareness" program on Tuesday, July 8 from 9:00 to 10:00 a.m. Call 478-5660 for more information.

Volleyball - Young Jewish Adults of Delaware (YJAD's) co-ed, noncompetitive volleyball league continues every Wednesday night from 6:00 p.m.-8:00 p.m. at the JCC.

Candle Lighting
JUNE
27TH - 8:15 PM
JULY
18TH - 8:09 PM

Rappaport

(continued from page 3)

ow many of his feelings during his stay in the Ukraine.

David spoke of life in a community not yet accustomed to freedom. Phones being bugged are an everyday occurrence and the fact that the Amitim young people were offended by this intrusion was difficult for the Ukrainians to understand as invasions of privacy, so unacceptable in a free and open society, are just another facet of their difficult lives.

As David's grandparents had fled the Ukraine for freedom in the United States, David's visit was also a return to his roots. When he attended the synagogue in Kiev, he felt an immediate bond, realizing that his grandparents had probably prayed there.

Sadly, anti-Semitism still exists in the Ukraine, and Ukrainian Jews need to feel that world Jewry cares about their fate. The Amitim program is one attempt to keep those Jews connected to the Jewish community worldwide.

Leaving the Ukraine for the last time, the Amitim volunteers were surprised by the visit of about 40 Kiev Jews who arrived at the train station to say goodbye. David was saddened by the realization that he was leaving people he had gotten to know so well over the past several months, but happy at the prospect of returning home.

The year's stay ended with a visit to Israel during Yom Ha'atzmaut. David and his Amitim friends were joyous to be back in a free society and to be able to experience the exhilaration of Independence Day in Israel. It was an upbeat ending to a year that had been fraught with sadness - at the Jewish community that was decimated by the Nazis and at the fragile remnants struggling to recreate themselves.

ORT Sponsors Reading Contest

In conjunction with ORT's "LOVE READING" Campaign, the Brandywine Chapter of Women's American ORT and ZANY BRAINY will co-sponsor ORT's fourth reading contest between June 15 and July 31. The contest is open to all students from preschool through 6th grade. A completer's prize package will be

awarded to all students completing at least one book. Trophies, gift certificates and random prizes will be awarded to all those who raise more than \$85 in donations. Children will be asked to solicit sponsors, with proceeds going to ORT's School Operations USA, the JCC Children's Center Library, and Albert Einstein Academy's

Library. Registration forms will be available at ZANY BRAINY on Concord Pike starting June 9th.

Supporting this year's contest are The St. Francis Hospital Radiology Department, ZANY BRAINY, TCBY and KRISPY KREME.

Women's American ORT supports a worldwide network of technical and vocational schools and is committed to quality education, for

which reading skills form the basis. ORT is a national partner in the American Library Association's Partnership for Literacy and Libraries. Women's American ORT, with a membership exceeding 100,000 across the country, is a staunch supporter of promoting literacy among our youth. For more information about the Love Reading Contest or Women's American ORT, call Amy Leviton, Chapter President at 234-2345.

HELP WANTED Director of Development

Flexible part-time schedule, Private school, North Wilmington, Friends Campaign, Projects with Constituents of School, Data Base Management, Staffing Volunteer Committees, Experience required.
 Call (302) 478-5026 or
 FAX Resumé (302) 478-0664
 Albert Einstein Academy
 101 Garden of Eden Road
 Wilmington, DE 19803

BABYSITTER NEEDED

Mature, responsible, loving person to watch our 7 month old girl in our North Wilm. home 2 days a week.
762-2155 between 10-5



THE KUTZ HOME

Look for details about the Kutz Home's Rededication Event on September 21 in upcoming issues of *The Jewish Voice*.

An elegant celebration is being planned by the Rededication Committee, chaired by Arlene Simon.

FEDERATION CAMPAIGN DIRECTOR Jewish Federation of Delaware Seeks Campaign Director

Candidate should have MSW or equivalent, 3+ years fundraising experience; strong Jewish background. Fax or mail resumé to Judy Wortman, 100 W. 10th Street, Suite 301, Wilmington, DE 19801-1628; fax (302) 427-2438.

KEHILLAH DIRECTOR

DIRECTOR -- toddler/pre-school child care program in Delaware County. Bachelors or Masters in Education required. Skill and experience in staff training, supervision, parent involvement and community outreach needed. Knowledge and experience with Jewish programs. Excellent salary and benefit package. EOE

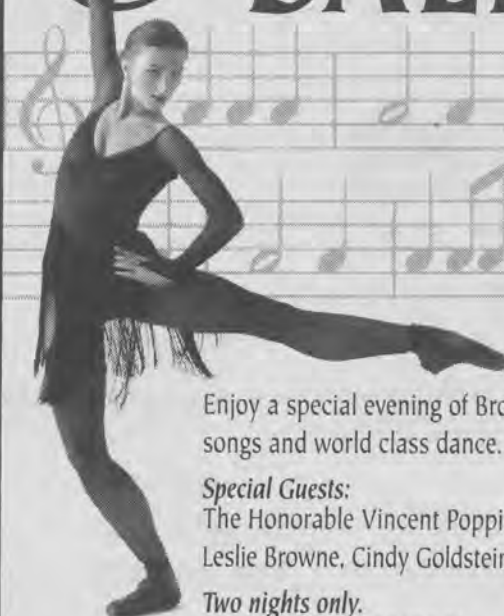
Send resumé Attn: F. Satinsky, Federation Day Care Services, 10700 Jamison Avenue, Philadelphia, PA 19116-3899

COMMUNITY ORGANIZER

Jewish Federation of Delaware seeks full time Community Organizer for outreach work in Newark area. Candidate must have excellent interpersonal skills, strong Jewish educational & program background.

Fax or mail resumé to Judy Wortman, 100 W. 10th Street, Suite 301, Wilmington, DE 19801-1628; fax (302) 427-2438.

BROADWAY & BALLET



Enjoy a special evening of Broadway songs and world class dance.

Special Guests:
 The Honorable Vincent Poppiti, Mardian Berman, Leslie Browne, Cindy Goldstein, John Marshall Sharp

Two nights only.
 Wed. July 9 at 6:30 PM Thurs. July 10 at 8 PM
 Call 800-37-GRAND for tickets

Russian Ballet Theater

"If You're Medicare-Eligible, Find Out Why 99% Of All The U.S. Healthcare Golden Medicare Plan™ Members Surveyed Would Recommend U.S. Healthcare® To Others."

Nearly 54,000 members of the U.S. Healthcare Golden Medicare Plan responded to our 1995 survey. Of those, 99% gave a favorable response when questioned about the overall medical care at their doctor's office, the ability to make doctor's appointments and the ability to obtain referrals to specialists. And 99% of respondents would recommend the plan to others.

Find out more. Please join us for complete information on the U.S. Healthcare Golden Medicare Plan. Our comprehensive, no-deductible plan can provide significant cost savings and **more benefits than federal Medicare plus many supplemental/gap plans combined!** Benefits include:

- Zero premium plan option* (You must continue to pay your Medicare Part B premium)
- Prescription drugs covered with a \$10 copay per prescription for generic and \$15 copay per prescription for name brand (\$500 annual maximum)
- Coverage for referred specialists, hospitalization and home health care (copay may apply)
- Vision care, hearing aid allowance, preventive dental care, and more (limitations and copays may apply)

Call for a personal appointment or to reserve space at an upcoming meeting:

1-800-856-2700

U.S.
HEALTHCARE
Golden Medicare Plan™



Don't miss out! Make plans to attend one of the following U.S. Healthcare Golden Medicare Plan meetings to be held this month.

Claymont

Wilmington Hilton
I-95 & Naamans Road
Mon., July 28, 11:00 a.m.
Mon., July 28, 3:00 p.m.
Mon., July 28, 6:30 p.m.

Dover

Dover Mall
3054 Dover Mall
Community Room
Thurs., July 24, 10:00 a.m.
Thurs., July 24, 11:30 a.m.

Newark

Christiana Hilton
100 Continental Drive
Tues., July 15, 11:00 a.m.
Tues., July 15, 3:00 p.m.
Tues., July 15, 6:30 p.m.

Newark

Holiday Inn
1203 Christiana Road
Mon., July 14, 11:00 a.m.
Mon., July 14, 3:00 p.m.
Mon., July 14, 6:30 p.m.

Wilmington

**Holiday Inn—
Wilmington North**
4000 Concord Pike
Tues., July 22, 11:00 a.m.
Tues., July 22, 3:00 p.m.
Tues., July 22, 6:30 p.m.

Open to Medicare-eligible individuals living in the state of Delaware.
The U.S. Healthcare Golden Medicare Plan has continuous open enrollment.

U.S. Healthcare 1995 Medicare Plan Member Survey: 92,453 surveys sent, 53,799 surveys returned. * \$0 is the monthly plan premium for the U.S. Healthcare Medicare 10 Plan option in Delaware. Current U.S. Healthcare members see your member handbook for specific exclusions, limitations and copayments.
A federally qualified HMO with a Medicare contract. © 1997 U.S. Healthcare, Inc.