

# The JEWISH VOICE

PUBLISHED BY THE JEWISH FEDERATION OF DELAWARE 101 Garden of Eden Rd., Wilmington, Delaware 19803

0301474 106-  
ALBERT Z GOLDBERG  
1403 NEW RD  
ELSMERE DEL 19805

"You heard it in  
The Jewish Voice"

Vol. 17, No. 22

Tamuz 13, 5744

July 13, 1984

16 Pages

## Yadin: Archeologist, Soldier, Politician

Compiled from articles in  
the *The Jerusalem Post*

Yigael Yadin was one of those few of Israel's native sons whose name is enshrined in the annals of the nation from the rebirth of the Jewish State. His unique personality combined the gift of an outstanding military commander in Israel's most trying period of the 1948 War of Independence with the talent of an eminent scholar, who was one of the world's most renowned archeologists.

His search for the nation's roots which will be linked forever with the massive excavations at Masada and with the uncovering of the traces of the Bar Kochba revolt against the Romans, gave him the strength and conviction to build the military force of the modern Jewish nation.

As chief of operations in the War of Independence and as Israel's second Chief of Staff at the young age of 32, Yadin was instrumental in the forging of the solid foundations of the Israel Defense Forces. He was a man of principle and independent thought and often stood up against David Ben-Gurion, Israel's first prime minister and defense minister - a man and leader he most admired.

When he retired from the IDF in 1952, following disagreement with Ben-Gurion over budget-cuts in the army, Yadin returned to his first love - archeology - which he inherited from his father, Eliezer Sukenik. He thrived in his archeological research and his findings are world famous.

His greatest fame as archeologist came with the massive excavations at Masada, which involved thousands of volunteers from Israel and abroad. Among his other well-known digs were those at the "Bar-Kochba caves" in Nahal Hever, and his uncovering of Hatzor and its ancient water systems. He also analysed *The War of the Sons of Light with the Sons of Darkness*, a central Dead Sea scroll that is now housed in Jerusalem's Shrine of the Book along with other Yadin finds such as the Bar-Kochba letters.

He was awarded the Israel prize for Jewish Studies in 1956 for his Ph.D. research on the Dead

(Continued to Page 16)

## Record Turnout For JFD 50th Annual Meeting

History was recently made when over 225 people joined together to celebrate the 50th anniversary of the Jewish Federation of Delaware at its golden anniversary meeting held on June 10. The highlight of the program was an audio-visual showing depicting the Federation's half-century of service to the Jewish community of Delaware. The presentation was organized and prepared by Francia Isakoff and Dr. Martin Yalisove with the able assistance of Dr. Charles Klein.

The slide showing, narrated by Francia and Larry Isakoff, traced the early history of Delaware Jewry up to the present time. The programs and services of the JCC, the Kutz Home, the Jewish Family Service, Albert Einstein Academy and Gratz High School along with the Newark and Lower Delaware Jewish communities, were dramatically illustrated, featuring many of the Jewish community leaders of

(Continued to Page 2)



Leo Zeffel, presenting special award to David Singer, 1984 General Campaign chairman.



Yetta Chaiken, chairman of the Voice Committee, left, making special presentation to Hilda Codor on behalf of Federation, in recognition of her husband, Ben, for his outstanding leadership. The first executive director of the Jewish Federation of Delaware, Codor served in this position from 1934-1952.



Yetta Chaiken, left, presents special certificate to Miriam Bluestone, acknowledging the professional contributions of her husband, Harry, during his tenure as JCC executive director and research consultant for the Jewish Federation.

## Israeli Teens Visit Wilmington Project Renewal Comes To Us Aug. 10-14

Five teen-agers ages 16-17, from the Jesse Cohen Center, Holon, Israel, Delaware's Project Renewal neighborhood, will be visiting Wilmington from Friday, Aug. 10 to Tuesday, Aug. 14.

Beverly Peltz, chairwoman of the Project Renewal Education Committee, has agreed to coordinate the activities for these young



Beverly Peltz

representatives. She will be seeking homes for hospitality sleeping accommodations (2 youths to one home), and chaperones and guides.

On Friday, Aug. 10 at 8 p.m. these young ambassadors will be participating in services at Congregation Beth Shalom. The public is invited to welcome and meet them. Other plans call for sight-seeing visits to Philadelphia, Washington and Wilmington and programs at the Jewish Community Center Day Camp.

Peltz stated that it is most important for us to welcome these youths as they and their families have welcomed us. These young ambassadors of Jesse Cohen will give us first-hand information of

what Project Renewal has done for them, their families and neighbors.

### Background on Project Renewal

The Delaware Jewish Federation, in conjunction with the Federations of Columbus and Dayton, have "adopted" the Jesse Cohen neighborhood as its Project Renewal "twinned city." Located in Holon, approximately 10 miles from Tel Aviv, the Jesse Cohen Center has a population of 9500 - approximately 2500 households. (average family size 3.8).

The area was established in the early 1950s and is predominately Sephardic. Jesse Cohen, in whose name funds were donated for early construction,

(Continued to Page 4)



# JFD/BCC Fun Day Set For Next Wednesday

The 15th annual Jewish Federation of Delaware/Brandywine Country Club Fun Day will be held Wednesday, July 18, according to co-chairmen Sylvan Taub and Norman Aerenson.

A brunch will be held at 10:30 a.m. to kickoff a full day of activities. Added to the traditional Fun Day favorites of



Sylvan Taub

golf and tennis will be several new athletic activities: horseshoes, badminton, volleyball and croquet. The golf tournament is scheduled to begin at 12:30 p.m. with a "shot-gun" start to launch this major activity. Golf and tennis prizes will be awarded along with the raffling of a Honda.

This year, individuals not wishing to participate in the athletic events will still be able to attend the cocktail hour at 5 p.m. and the dinner at 6:30 p.m. Guests are welcome.

Taub and Aerenson, as well as Robert Kauffman, BCC president, stressed that they are very proud of JFD/BCC Fun Day tradition. The proceeds of Fun Day are allocated to the annual campaign of the Jewish Federation of Delaware. In commenting on the event, David Singer, JFD General Campaign chairman stated, "We commend the leadership of the Brandywine Country Club for their continuing support of Fun Day which represents an important communal service project of the Club."

Charles Twer, JFD volunteer is coordinating the event. For further information, please call Charles Twer at the Federation office, 478-6200.

## JFD Annual Meeting -

(Continued from Page 1)

our community. (Copies of the slide presentation will be made available for showing to local Jewish community organizations upon request).

David Singer, 1984 General Campaign chairman, reported to the assemblage, that a total of \$1,033,874 had been raised to date in the campaign including \$124,841 earmarked for Project Renewal. He indicated that approximately \$225,000 in 1983 card value was still to be solicited, which would bring the Regular Campaign to a final total of approximately \$1,135,000 which would be the highest total in our campaign history. He stressed the importance of each volunteer campaign worker contacting their prospects in order to successfully complete the drive. Mr. Singer expressed his thanks to the over 200 men and women who served as campaign volunteers in the current annual campaign.

President Zeffel presented a special plaque to Singer in appreciation of his leadership to the campaign.

One of the special features on the annual meeting agenda were special presentations to Hilda Codor recognition of the professional contributions of her husband, Ben, who was the first executive director of the Federation from 1934 to 1952 and to Miriam Bluestone, acknowledging the leadership of her husband, Harry, who served as JCC executive director and also served as a special consultant to Federation on community demographic research.

The presentations were made by Yetta Chaiken, chairman of the Voice Committee, on behalf of the Jewish Federation.

The following slate of Federation officers was unanimously approved for 1984-85

- President, Leo Zeffel;
- Vice Presidents, Alfred J. Green

- Secretary, Harold E. May
- Assistant Secretary, Francia Isakoff
- Treasurer, Pat Spiegel
- Assistant Treasurer, Gloria Fine
- Manuel Panar
- David J. Singer

The following were elected to the Board of Directors:

For a three (3) year term ending in June, 1987;

- Irwin Engelson
- Richard Karfunkle

For a two (2) year term ending in June, 1986:

- Judy Aerenson
- Carl Cobin
- Marvin Shepard

For a one (1) year term ending in June, 1985:

- Dennis Spivack
- Paul Becher

In his "State of the Federation" address, Leo Zeffel, who was re-elected as president, commented on the critical need for continued and concerted community effort to resolve the unsolved problems of the early 80s and to be responsive to our community's growing needs of the mid and late 80s and beyond. He added, "we have made good progress in our fund raising efforts but each year as we reach a new high, we also encounter new needs. Two programs which were activated by my predecessors have been strengthened this year - young leadership, chaired by Rhoda and Steve Domchik and guided by Marjory and Richard Levine, is one of the prime sources of community leadership for the future. We have an active, committed group - many of whom will participate on a mission to Israel in the fall.

Of equal importance is our budget/planning committee chaired by Martin Mand and all of the Task Force Chair people. As Paul Fine mentioned in his past president's comments in the Voice, we continue to be fiscally accountable to the Jewish community.

We must recognize the critical importance of extending the services of the Federation to the Jewish community.

(Continued to Page 8)



JFD OFFICERS FOR 1984-85

Left to right - Harold May, Francia Isakoff, Pat Spiegel, Manuel Panar, Leo Zeffel, Gloria Fine, David Singer.

Not Shown: Alfred Green.



NEWLY ELECTED JFD BOARD MEMBERS FOR 1984-85

Left to right - Paul Becher, Richard Karfunkle, Leo Zeffel, president, Irwin Engelson, Judy Aerenson.

Not Shown: Dennis Spivak, Marvin Shepard, Carl Cobin.



Ken Marklewitz, president of Gratz, second from left, making presentation to Ruth Ann Ger, (first from left), recipient of Gratz Award as Board Member of Year.

Jane and Steve Goldberg receiving certificates as Board Members of the Year from Nisson Finkelstein, center, past president of Albert Einstein Academy.



Left to right: Norman Shuman, president of Kutz Home making presentation to Robert Silver, and Gilbert Sloan, second from right, receiving award as Jewish Family Service Board Member of Year from Irwin Engelson, past president of Jewish Family Service.



JFD Board Member of the year, Francia Isakoff, receiving certificate from Leo Zeffel.





L to R: Glenna Gibbons, past chairwoman, bar/bat mitzvah twinning program, Gail Budin and Lois Richards, present co-chairwomen.

## Twinning Program Offers Link With Soviet Jews

"Participation in the bar or bat mitzvah twinning ceremony is a most important way for the young Jews of America to reach out to their counterparts in the Soviet Union," commented Glenna Gibbons, who for the past three years served as the coordinator of this program as part of the Federations' JCRC Task Force on Soviet Jewry.

The commitment to be a twin begins about six months prior to the actual bar or bat mitzvah date. It is then, if the young boy or girl decides to assume the responsibility of being twinned, that the Soviet twin is chosen by name, a packet of information on how to be a twin is given, a profile sheet on the Soviet child is requested from the National Council for Soviet Jewry and a correspondence is begun. "I tried to maintain contact with the children in our community who were participating," Gibbons explained, "especially to encourage their continuing to write. Otherwise, it might be discouraging, since too few of their letters are answered. We don't always know whether they are received, even though they are sent return receipt requested." In some instances, a child's correspondence is acknowledged. Stephanie Frankle, whose bat mitzvah ceremony was March 3, did receive a letter from her twin, with a hand-drawn picture of a child leaving the Soviet Union and entering the U.S. "All of the other participants are so excited when this happens. But it is so rare," sighed Gibbons. "The effort to maintain contact is so important, though," she continued. "I have en-

couraged letter writing even after the ceremony."

On the day of the bar or bat mitzvah, Gibbons attends services to present a certificate in recognition of this accomplishment and to present a copy of the book *Refusenik*, a gift from the Jewish Federation. She also speaks to the congregation either specifically about the family of this Soviet child, or the plight of all Jewish refuseniks, or the current status of the emigration of Soviet Jews. "For some in the audience, it is the first they are hearing of this spiritual holocaust and they thank me," she said. "Many are very emotionally touched. As they begin to care about what is happening in the Soviet Union, they want to get involved and this is an opportunity to make a valuable contribution. Even if these Soviet Jews are not allowed to emigrate, their morale is boosted by our demonstration of concern. They have more courage to continue in their struggle knowing that we American Jews care about them."

Having overseen this program for the past three years, Glenna Gibbons and her family moved to Phoenix, Ariz. the end of June. Lois Richards and Gail Budin have agreed to continue to supervise the continuing program with the assistance of Ilene Sivakoff. They will be developing a brief presentation on the twinning program in order to teach pre-bar and bat mitzvah aged youth about the possibilities for involvement. For further information, please call the Federation office, 478-6200.

(Continued to Page 13)

## Israel Pullout In Lebanon Is Complicated, Physicians And Dentists Are Told

The Jewish physicians and dentists of Delaware joined together on Sunday, July 1 at Dr. Leonard & Judy Seltzer's home to meet with Dr. Ephraim Sneh, an Israeli physician.

The topic was "Peace in the Middle East: Myth or Reality."

Sneh is a Colonel in the Israel Defence Force. From September 1981 to December 1982 he was Commander of the Israeli Forces in South Lebanon and served as I.D.F. Liaison to former Major Haddad, Lebanese Commander of the Christian Force in south Lebanon.

The informal educational meeting was coordinated by Dr. Steven Edell and Dr. Edward Goldenberg, chairmen of the Physician's Division and Dr. George Zurkow and Dr. Alan Simkins, chairmen of the Dental Division.

Sneh stated "that the situation in Lebanon is extremely confusing, because in the same family or village there are power struggles," and it is difficult to know with whom to relate. Until the area is secure from ter-

rorists it is difficult for Israel to pull out. He further stated that the national Lebanese government has no power or influence and is in reality a puppet of Syria. When Lebanon can be stabilized, then there will be a greater possibility of stabilization of Israel with its neighbors. Sneh acknowledged that Syria is the most belligerent of Israel's neighbors, "but they do not have the ability to threaten Israel by themselves," he said. He further stated that there probably would be an accommodation with Jordan concerning the West Bank (Judea and Samaria), whether this be a confederation, semi-autonomous Palestinian state or some other similar solution. He did not think that Israel would annex the West Bank.

Sneh participated in the Entebbe rescue and is a career army medical officer. His specialty is in internal medicine. Sneh has been on sabbatical at the Walter Reed Army Hospital in Washington D.C. He is returning to his duties in Israel in July.

## Planning For The Future, Working On Problems Of Today, Highlighting The Task Force On Aging

The Task Force on Aging of the Jewish Federation has been meeting with the Jewish Family Service, Jewish Community Center, B'nai B'rith House and Kutz Home representatives to find means to help each of these agencies in better serving the aging population of Delaware.

Some of the current issues that were discussed in the past two meetings were: expanding the senior nutrition and activities program at the JCC to provide these services to senior citizens who cannot or do not come to the Center and advise and suggest ideas to the Jewish Family Service to help better serve lonely senior adults by using volunteers.

The Jewish Family Service began a pilot volunteer coordinator program in January 1984, funded by a special grant. They have a significant number of lonely senior citizens who need friendly visitors and reassurance telephone calls. Jewish Family Service is in urgent need of volunteers.

The Task Force is presently developing an assessment questionnaire to determine the needs of our senior adults today and project plans for tomorrow.

The Task Force concept came into existence two years ago; formed by the Federation to better serve the needs of the Jewish community, not only to review and approve budgets but to plan for the needs of the Jewish community of Delaware.

There are four Task Forces in the Budget and Planning Committee: Group Work, Family Service, Jewish Education and Aging. Each Task Force has between 15 and 20 members representing many aspects of the



Gloria Fine

community. All agencies and most Jewish organizations are involved.

The Aging Task Force has been chaired by Gloria Fine, who also is a member of the Federation Executive Committee and Kutz Home board of directors. Some of the other members and some of their affiliations are: Judy Arenson and Linda Oster, Hadassah; Shirley Karfunkle, Kutz and Jewish Family Service boards; Arnold Budin, Leadership Development; Leslye Heisler, Kutz Auxiliary; Dr. Charles Levy, Kutz Home; Myron Milbouer, JFS; Asher Rubin, B'nai B'rith House; Helen Rubin, National Council of Jewish Women; Leslie Newman, Jewish Family Service; Verna Schenker, Congregation Beth Emeth; Judy Topkis, Jeanne Handelman, Leni Markell and, of course, Fannie Nathans of the Kutz Board.

Each of the Task Forces are seeking additional members. If interested in more information please call the Federation at 478-6200.

**Summer '84 Committee  
Commission on Soviet Jewry  
Community Relations Committee  
Jewish Federation Council of Greater Los Angeles  
sponsors a major community event featuring  
The Israel Philharmonic Orchestra  
conducted by  
Zubin Mehta  
at the  
Hollywood Bowl on Sunday, July 29, 1984, 8 p.m.  
Itzhak Perlman, soloist  
Program chaired by Barbra Streisand  
Hosted by Gregory Peck who will discuss the plight of Soviet Jews in his speech.  
Prices begin \$50 (tax deductible)**

*If you will be visiting Los Angeles this summer, we urge your attendance at this program.*



# U.S. Senate Passes Bill Providing 'Equal Access'

Criticizing the U.S. Senate's adoption of a bill requiring public schools to grant religious clubs "equal access" to school facilities, Jewish leaders last week pledged to fight efforts to get the measure passed in the House of Representatives. The House defeated a similar bill in May.

Opponents of the bill fear it might allow missionary groups to proselytize students and make way for cults to meet on school grounds. They see it as a "back door" attempt to bring prayer into the classroom.

By a vote of 88 to 11, the Senate passed the measure as an amendment to a popular bill calling for an additional expenditure of nearly \$1 billion in math, science and foreign-language education programs. The House had already passed the education bill, but without the equal-access amendment. Delaware's Senators William Roth and Joseph Biden supported the bill.

The bill last week was sent back for review to the House Judiciary Committee, which has until Aug. 6 to bring a recommendation to the floor. The committee could take no action or report it to the House floor, with or without changes. The bill would then go to a joint Senate-House conference committee for resolution of conflicting language.

Action on that bill is not expected until July 24, at the earliest, when Congress members return from their Independence Day recess. But a legislative aide to a ranking member of the Judiciary Committee said equal access also could come up, in the original form that the House defeated, as early as July 25. Under a procedure known as "calendar Wednesday," the House could debate and vote on the bill that day, regardless of the

Judiciary Committee's action.

The House defeated the original, free-standing equal-access bill in May by a slim margin of 11 votes less than the required two-thirds. The Senate version, introduced by Sen. Jeremiah Denton, R-Ala., and amended by Sen. Mark O. Hatfield, R-Ore., differs from its forerunner in the House in four ways, according to Mark Pelavin, a legislative assistant in the Washington office of American Jewish Congress.

Whereas the original House version would have cut off all federal aid to schools that denied equal access to religious groups, the Senate bill does not specify a remedy. Supporters of the Senate version said civil lawsuits would serve as the enforcement mechanism.

Second, the Senate struck a provision that would have allowed such religious clubs to meet in non-instructional hours during the school day. The bill now requires schools to provide such access only before or after school hours.

Third, the Senate version limits the participation of outsiders in religious clubs, requiring them to be student-initiated and without school sponsorship.

Fourth, the Senate version applies not only to religious clubs, but political and philosophical groups as well.

These changes satisfied several initial critics of equal access in the Senate and, according to the Judiciary Committee aide, may mollify opponents in the House. "It is a vast improvement over the bill considered in the House in May," said the aide, who asked not to be identified.

But the Senate changes did not assuage the concerns of Jewish



groups, which see the measure as an infringement of the constitution's mandate of separation of church and state.

Leo Zefter, Jewish Federation of Delaware president, commented: "As Jews, we are particularly troubled that religious meetings in public schools will put pressure on those teenagers in religious minorities."

"Should the amended bill become law," he added, "our secondary schools would be open to a wide variety of religious activities, including worship conducted by outside religious groups. These could include the Unification Church, as well as various cult and other pseudo-religious groups."

Other Jewish organizations voicing their opposition to equal-access legislation included the Jewish Community Relations Committee, American Jewish Committee and the Anti-Defamation League of B'nai B'rith.

ADL's regional director, Barry Morrison explained that his agency is opposed to both the Senate and House versions of the measure, and said, "We're not about to favor one or the other."

Referring to the Senate's expansion of the House bill to protect clubs discriminated against on account of their philosophical or political beliefs, Morrison said, "The choice is whether we want to have prayer and the Nazis or just prayer in the public schools. We are not going to let it become a Sophie's choice."

AJCongress said it would file a lawsuit challenging the constitutionality of the bill if it becomes law, and JCRC said it would support such an effort.

But neither of Delaware's senators seem to see a constitutional problem with the equal-access bill. All of the tri-state area's senators except Bill Bradley, D-N.J., supported the measure.

### DEADLINE

The next issue of The Jewish Voice will be published FRIDAY, AUGUST 10. The deadline for stories and photos is noon, WEDNESDAY, AUGUST 1. Material should be sent or brought to the Jewish Voice office at the Jewish Federation of Delaware, 101 Garden of Eden Rd., Wilmington, 19803. All articles must be typed, double spaced.

### THE JEWISH VOICE (USPS-704160)

Second class postage paid at Wilmington, De. Published semi-monthly, and monthly in July and August, by the Jewish Federation of Delaware, 101 Garden of Eden Rd., Wilmington, De., 19803. Subscription price \$5.00. Mailed to subscribers who are contributors to the Jewish Federation of Delaware. POSTMASTER: Send address changes to The Jewish Voice, 101 Garden of Eden Rd., Wilmington, De. 19803.

## Israeli Teens —

(Continued from Page 1) was from a Delaware family. Twenty % of the households have over 6 persons.

Sixty-five% of working residents are salaried employees; 21% are only temporarily employed. Most workers are employed in industry and construction trades.

The Israel government, as a co-partner with American Jewry in Project Renewal, have assumed responsibility for housing and housing renovation. External renovations

have been made to 364 housing units; 107 have undergone interior renovation and 42 units have been enlarged.

Our Federation, along with Columbus and Dayton, are responsible for all needed social service projects, and capital funding for social service programs.

Up until Project Renewal was initiated in 1980, Jesse Cohen neighborhood was beset with many problems including health care, delinquent youth, the aged, education

(Continued to Page 8)

## The Jewish Voice

Published semimonthly, and monthly in July and August, by the Jewish Federation of Delaware.

Editorial opinions expressed in this newspaper are those of the newspaper and not those of any individual. Signed editorials do not necessarily represent the view of the newspaper but rather express the view of the writer.

Jewish Federation of Delaware, 101 Garden of Eden Road Wilmington, De. 19803

Subscription Price: \$5.00

Circulation 3,000

Mailed to subscribers who are contributors to Jewish Federation of Delaware Second Class Postage paid at Wilm., Del.

Yetta Chaiken, Newspaper Chairman

Editorial Committee: Yetta Chaiken, chairman; Cecell Ehrlich, Nisson Finkelstein, William Frank, Beverly Hindin, Ann Jaffe, Arnold Kneitel, Leonard Lipstein, Simon Steinberg.

Administrative Committee: Yetta Chaiken, chairman; Marjory Balick, Sam Berman, Dr. Steven Edell, Irving Kaufman, Irving Levitt, Ann Marcus, Charles Twer, Sam Wenzer.

Karen G. Moss, Editor

Morris Lapidus, Executive Vice President

No material will be accepted by The Jewish Voice which is considered against the best interests of the Jewish community.



Jesse Cohen teenagers.

Published by the Jewish Federation of Delaware, 101 Garden of Eden Road, Wilmington, Delaware 19803. Telephone: 336-1111. Second class postage paid at Wilmington, Delaware. Postmaster: Send address changes to The Jewish Voice, 101 Garden of Eden Road, Wilmington, Delaware 19803.

Published by the Jewish Federation of Delaware, 101 Garden of Eden Road, Wilmington, Delaware 19803. Telephone: 336-1111. Second class postage paid at Wilmington, Delaware. Postmaster: Send address changes to The Jewish Voice, 101 Garden of Eden Road, Wilmington, Delaware 19803.

Published by the Jewish Federation of Delaware, 101 Garden of Eden Road, Wilmington, Delaware 19803. Telephone: 336-1111. Second class postage paid at Wilmington, Delaware. Postmaster: Send address changes to The Jewish Voice, 101 Garden of Eden Road, Wilmington, Delaware 19803.

Published by the Jewish Federation of Delaware, 101 Garden of Eden Road, Wilmington, Delaware 19803. Telephone: 336-1111. Second class postage paid at Wilmington, Delaware. Postmaster: Send address changes to The Jewish Voice, 101 Garden of Eden Road, Wilmington, Delaware 19803.



## The Jew In The Motion Picture

Join us on Thursday, July 19 and 26 from 7:30-9 p.m. for a fascinating look at how the images of Jews have changed along with the film industry and the effect those images have had on the public. Models from the movies act as important cues to audiences, helping non-Jews form opinions about Jews and Jewish life, and helping Jews to look at themselves, and to evaluate their work and personal lives in accordance with those models.

Film clips will be shown to illustrate points raised in discussion. We'll see how Jews have been portrayed, from the pale, bent old man dressed black, praying and talking in a heavy accent; to the post-World War II Jew who was a blond, blue-eyed, muscular youth driving a tractor with his left hand and carrying a rifle with his right; to the third image hitting the screen in the 1960s - the thin, nervous type who doesn't like to fight, ala Woody Allen.

The instructor will be Dr. Norbert Samuelson, associate professor at Temple University. He has taught "The Image of the Jew in the Motion Picture" for three years, and currently serves as chairman of the International Academy for Jewish Philosophy and is the director of the Jewish Studies program at Temple University.

The series is funded in part by a grant from the Delaware Humanities Forum, a state program of the National Endowment for the Humanities. There is no charge, and the series is open to the public. Please call the JCC at 478-5660 prior to the date to register. Registration is limited to provide for maximum class participation.

## Center And Campsite Schedules

SUNDAY, JULY 1 - FRIDAY, AUG. 17

Health and Fitness facilities hours:

Sunday	9 a.m. - 12 p.m.
Monday-Thursday	9 a.m. - 9 p.m.
Wednesday	6 a.m. - 9 p.m.
Friday	9 a.m. - 4:45 p.m.
Saturday	Closed all day

Campsite hours:

Sunday	11 a.m. - 7 p.m.
Tuesday and Thursday	4 - 7 p.m.
Saturday	1 - 7 p.m.

SATURDAY, AUG. 18 - MONDAY, SEPT. 3

The pool, gym, racquetball and tennis courts, and Health facilities will be closed for renovation. Stop in after Labor Day to see our beautiful changes!

The Center offices, Daycare and Senior Center will be open Monday - Friday until 5:30 p.m.

Campsite hours:

Sunday - Thursday	11 a.m. - 7 p.m.
Friday	11 a.m. - 5 p.m.
Saturday	1 - 7 p.m.

The campsite will be open on Labor Day, Monday, Sept. 3 from 11 a.m. - 7 p.m.

Please stop at the Center Front Desk for a map to the Campsite on River road.

## Elegant Brunch

Learn how to prepare and serve brunch food on Sunday, July 29 with gourmet Bebe Sklut. Participants will learn to prepare a special quiche, fruit soup, fish salad, coffee cake, and mimosas.

Cooks will arrive at the Center at 10 a.m. for the brunch cooking class, and will be joined at 12:30 p.m. by their guests. Each cook may invite up to five guests. Enjoy the "fruit" of your labors in the Center courtyard with background music for a touch of first-class atmosphere!

The fees are as follows: \$8 for Center members, plus \$8 for each member guest of cook; and \$16 for Non-members, plus \$16 for each non-member guest of cook.

Please register by July 20 as space is limited and we must order food in advance. Call 478-5660 as soon as possible.

## The "Lucky 100"

Call and sign up now for this great opportunity: 100 lucky people can contribute \$100 to the Jewish Community Center, and ONE lucky person will win the Grand Prize of \$5000. What a chance! You can't beat these odds - 1 out of 100!

The following people have joined the "Lucky 100" Contributors:

Marjory and Richard Levine  
Beverly and Sol Peltz  
Deny and Efreim Lieber  
Rona and Marc Caplan  
Toby and Gene Weiner  
Deane and Heshy Kattler  
Renee and Stephen Spiller  
Joanne and David Singer  
Nan and Lenny Lipstein  
Joan and Ronnie Olivere  
Joan and Jerry Lehrfeld  
Sandy and Sylvan Taub  
Alene and Stephen Tecot  
Renee and Joe Yucht  
Ellen and Garth Koniver  
Joan and David Bour  
Sheila and Art Inden  
Karen and David Rovine  
Mickey and Lanny Edelson  
Eileen and Michael Conner  
Eddi and James Chaikin  
Howard and Marsha Borin  
Sandy and Howard Berg  
Peggy and Andy Lubin  
Elaine and Jimmy Pizor  
Judy and Allan Levy  
Cynthia and Richard Kane  
Judy and David Mellen

Join the "Lucky Ones" above - call the JCC at 478-5660 and say, "Hold one for me!"

## Cultural Caravan

Spaces still remain for the Monday, July 30 Winton Marsalis concert at the Mann Music Center. Trumpet virtuoso Marsalis is the 24-year-old winner of two 1984 Grammy Awards, and promises to provide a performance you won't forget. The cost for Center members is \$5 and for non-member, \$7. The cost includes bus transportation and general admission lawn seating. The bus will depart the JCC at 6:30 p.m. Call 478-5660 now and make a reservation while tickets remain!

Join us at the Mann Center on Tuesday, Aug. 21 to see the American Ballet Theatre perform "Cinderella," a full-length ballet newly produced by Mikhail Baryshnikov. Come share in the magic that only Baryshnikov can produce! Tickets are \$28 for Center members and \$42 for non-members. The bus will depart from the JCC at 6:30 p.m. Call the Center now for reservations.

## The Fun Doesn't Stop Here!

Three hundred fifty community children already know the fun and friendship of JCC Day Camp... and the fun doesn't stop there! After Aug. 17, when Day Camp ends, enthusiastic campers can still experience the excitement and activity of camping, with the JCC's Post-Camp: Mini-Camp Childcare.

Campers may register for either one or both week-long sessions, from Aug. 20-24 and Aug. 27-31. Activities will include sports, crafts, swimming, games, and more, plus cookouts every Wednesday. Post-Camp is open to children in pre-kindergarten (age 4 by Dec. 31, 1984) through entering eighth graders. The Post-Camp day will run from 7:30 a.m. to 5:30 p.m.

The cost schedule is as follows: \$65/week for Center member children; \$80/week for non-member children; \$45/3 days for Center members children; and \$60/3 days for non-member children. All fees must be paid in full by Aug. 1 for Post-Camp.

Children must bring to camp each day the following: bag lunch (beverage will be provided), two swim suits, two towels, hat. In addition, children should wear comfortable play clothes and sneakers.

Contact Arlene F. Bowman at 764-8878 or 764-8879 for information and registration.



478-5660

## 'the Center of Life'

The JCC is a constituent agency of the Jewish Federation of Delaware and a member agency of the United Way of Delaware.



## Ass't Exec. Attends JWB Institute

Sue Shaffer (extreme right), assistant executive director for the Jewish Community Center, recently attended the Jewish Welfare Board's first Management Institute for Assistant Directors of Jewish Community Centers. The Institute took place in New York City as part of JWB's extensive training activities and services.

Shaffer joined the Center staff in Jan. 1984. Her responsibilities include the supervision of staff, coordination of programming, and the development of adult programming, working with committees to formulate and present comprehensive programming that will fit the needs of Wilmington's growing community.

Participants of the Institute zeroed in on planning operations, managing budgets, supervision and evaluation, managing staff, and managing facilities.

Others in the photo are (left to right): Phil Kaplan, Tidewater, Va.; Abe Vinik, Chicago, Institute mentor; Howard Wasserman, JWB training consultant and Institute coordinator; and Myron Goodman, Montreal.

## Single Mingles

The Jewish Community Center, in conjunction with the Young Professionals Group (YPG) of Temple Beth Emeth, offers the following programs to Singles in their 20's and 30's during the remainder of the summer:

Saturday, July 21 - House Party at Sue R's house, 2702 Jacqueline Drive, H-24, Wilmington, at 8:30 p.m. Cost: \$4. Call Sue at 475-0840 to RSVP and get directions.

Sunday, Aug. 5 - Trip to Wildwood, N.J. beach. Meet at the JCC at 9 a.m. and carpool to the shore for a day of fun in the sun. Call Amy S. at 215-565-0740 to RSVP. (Raindate: Aug. 12).

Sunday, Aug. 19 - Cookout/Swim/Volleyball Day at the JCC Campsite on River Road, from noon to 5 p.m. Call the JCC to reserve a space, so that we can order enough food! Cost: \$5. Pay at the door.



# Peres —

(Continued from Page 5)  
unity. Navon's gesture of compromise took the wind out of Rabin's sails and he too felt compelled to forego a division leadership battle.



Shimon Peres

So Peres has the solid support of the Labor alignment (the Labor party, Mapam and other smaller groupings), and he could nowadays be called a 'concensus leader' within his party, taking up a centrist position perhaps in spite of his own 'right-of-center' record. On foreign policy, his main difference with the Likud is that he is prepared to consider territorial compromise over the West Bank and Gaza with Jordan in return for guarantees of security. On domestic affairs - and Peres is equally at home here, unlike Begin - the Labor leader is what the Western Europeans call a 'Social Democrat' with a clear and very reasoned vision of the sort of Israeli society he wants to see. His vision is poles apart from Begin's...

## Advantages And Handicaps

On the other hand, Peres has become a focal point for discontent (and even some hatred) by a significant sector of Israel's oriental community who see him as an "Ashkenazi," unsympathetic and even hostile to their non-European culture and traditions. In part Peres has borne the burden of the entire 29 years in power of the Labor movement, during which the

country's oriental communities have felt, rightly or wrongly, that they received a raw deal from a largely Ashkenazi establishment. While Peres can be a deft debater and a witty after-dinner speaker, (he is in fact a genuine intellectual and an avid reader) - his inability to make electrifying speeches to mass audiences, or to come over on television as an exciting personality, have been a handicap in his attempt to win the people's confidence. Now, with the economy in crisis and the Lebanese War as problematic as ever - Peres believes his Labor alignment is on the way back into power.

Peres himself has written four books about Israeli politics. Married with three children, he has always kept his happy family life with his wife, children and grandchildren out of the limelight. Ironically, Peres might take heart from the fact that his former arch-rival Menachem Begin, spent 29 years in opposition before becoming prime minister. But in the event that the opposition leader is defeated in July there is no lack of attractive and able candidates to lead the Labor party in the second part of the 1980 s. They may be able to win more votes than Shimon Peres but friend and foe alike would agree there is no certainty that they may, or will, make better prime ministers.

## What's Happening —

(Continued from Page 8)  
Let us help these victims of religious persecution just as we help our own distressed Jewish communities around the world. Contact the State Department and urge U.S. support of an international conference and all efforts which will help restore human rights to the Bahai community in Iran. Urge others to do the same.

# Shamir —

(Continued from Page 5)

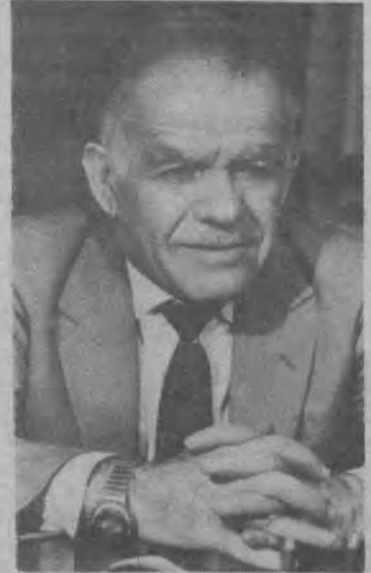
Shamir is a man whom few know personally. He is modest and discreet, though never aloof in his relations with his colleagues. Shamir is a blatant contrast in style from his predecessor; perhaps this is precisely what Herut needed in order to succeed the legendary leader. The irreplaceable can't be replaced.

Shamir maintains the impersonal low-profile of the efficient business executive. He lacks Begin's flair but is respected for his quick, intelligent grasp of difficult problems and his cool nerve when under pressure.

Ironically, Shamir's more unassuming style of government has given him a reputation of being more moderate than Begin. But in terms of policy, Shamir has often maintained a harder line than his predecessor, both historically (in the underground) and in modern times (Shamir didn't support the Camp David accords with Egypt and abstained in the Knesset vote on the issue). Shamir, of course, stands squarely behind the Herut principle of an undivided Eretz Yisrael (what others call a 'greater Israel') rather than territorial compromise as promised by the Labor opposition. Begin backs Shamir completely within Herut as leader and prime minister. Shamir's inability to galvanize large crowds with rousing oratory may or may not have weakened his position within Herut. Only the July 23 results will tell how Herut's second PM has fared.

## The Stage Is Set

The more flamboyant former Defense Minister Ariel Sharon arouses both



Yitzhak Shamir

great enthusiasm and great fears in Herut circles as well as in the country as a whole. David Levy might well have defeated Shamir in a leadership contest but (like Navon in the Labor party), he stepped down.

The more moderate style of Shamir, Levy and Arens looks to many Herut-niks as preferable to a Sharon-ish image. Begin was big enough to go it alone: now collective leadership under Shamir's firm but careful hand seemed electorally advisable.

A victory for the Likud in the upcoming election would enable Shamir to consolidate his leadership in his party and in the country. His political enemies believe that defeat for the Likud at the polls could mean that Shamir might enter history as the short lived caretaker leader of Herut after Menachem Begin took his final exit from the political stage. Shamir lets them get on with the talk while he goes on with the job of being prime minister. For him, the stage is set for 'happy end.'

cookware & utensils, plus a healthy dash of how-to!

**creative cooking**

christiana mall 366-7484  
brammar plaza 475-0390

FRESH BREWED • CUP-A-SOUP •  
CAFFEINE FREE • ICED TEA •  
HOT CHOCOLATE • NO CONTRACT •  
CUP SODA • NO DEPOSIT

GOOD BUSINESS A PLEASURE

**TAKE-A-BREAK**

COFFEE SERVICE

CATERING for BUSINESS FUNCTIONS COFFEE and DONUTS

**658-8571**  
413 8th Ave. Wilm., De.

ASK ABOUT OUR VENDING DIVISION

**NORTH EAST AUCTION GALLERIE & FARMERS MARKET**  
U.S. Route 40, North East, MD.

**"TRI STATES LARGEST & FINEST"**  
ESTATES - LIQUIDATIONS - HOUSEHOLD

**R.C. BURKHEIMER & ASSOC.**  
Realtors - Auctioneers - Appraisers

**302-575-1881 301-287-5588**

EXCLUSIVE \*\* ELEGANT

**KOSHER CATERING**  
BY  
**FRED GAMIEL**

HOME and SYNAGOGUE  
Also Available Banquet Rooms for 800 Persons - Free Parking

**CALL FRED or MARK**  
**655-2748 or 475-8317**

**NFI YORK**

LEADING in maintenance

Better By Degree

**JACOBS**

SINCE 1937

118 SOUTH MARKET STREET  
**(302) 658-6503**

New Accounts Welcome

— Senior Citizen Discount

FEATURING FUEL ADDITIVE FOR 2 IN OUR OIL

MasterCard VISA

**HARRY DAVID ZUTZ**

Insurance Exclusively at 300 Delaware Avenue. Underwriting Facilities for: Fire Casualty, Auto, Marine, Surety Bonds.

Specialists for unusual risks.

**658-8000**

**OLSEN**  
TEMPORARY SERVICES

**WE KNOW HOW TO HELP**

WILMINGTON ..... 575-1700  
NEWARK ..... 738-3500  
CONCORD PLAZA ..... 478-6110  
DOVER ..... 1-734-5379

Gilbert J. Spiegel  
Founder

Pat Spiegel  
President



# Delaware Gratz Holds Closing Exercises Gondolas, Ghettoes —

Debra and Deena Panitz, graduates of the 1984 class of Delaware Gratz Hebrew High School started the closing exercises by delivering the invocation in both Hebrew and English.

Kenneth Markiewitz, president of the Delaware Gratz Board of Trustees, followed with greetings and comments concerning the overall operations of Gratz.

Elaine Friedberg, principal, introduced the faculty and the graduating class, after which she called on Lewis Stat to present the awards to the graduates. Stat has generously established a prize fund for Delaware Gratz which provides gifts annually for each graduate.

Rabbi Kenneth Cohen of Congregation Beth Shalom then addressed the graduates. His speech was interesting and meaningful and very much appreciated by all who attended the ceremonies.

Leora Ger, Amy Miller, James Davis and Cheryl Topper, four of the graduates, each gave a personal message to the student body, staff, families and board members who gathered together for the occasion.

Honor certificates were

presented to the following students for excellence in all subjects: Prozdor: Beth Panitz and Vered Reuben; High School I: Alisa Aibinder; High School II: Andrea Jacobs; High School III: Karen Levin and Shifra Vega; High School IV: Debra Panitz and Deena Panitz.

Shifra Vega of High School III, as a representative of the student body, made farewell remarks to the seniors.

The 1984 Graduation Journal was dedicated with deepest respect to the memory of Dr. Jules Levin who served for many years as a member of the Gratz Board of Trustees, and who believed sincerely in the importance of a strong Hebrew and Judaic education, not only for his own children, but for all Jewish youth in the community.

One of the Gratz teachers, Jane Hormadaly, accompanied by her guitar, led the group in a medley of Hebrew and Israeli songs.

A delicious dessert buffet, organized by Ruth Ann Ger and Charlotte Waxman, was very much enjoyed by all those who took part in the 1984 closing ceremonies of Delaware Gratz Hebrew High School.



Rabbi Kenneth Cohen of Congregation Beth Shalom addresses the graduates.



Shifra Vega of High School III bids farewell to the Seniors.



Lewis Stat presents awards to the graduating class.

(Continued from Page 7)

close more than once. Installing them in a separate area once used as a foundry (called the "Geto") was Venice's solution. Many other cities must have thought it was an admirable one, for they followed suit.

Venice's ghetto was unique, however, in that it was an island within a city of islands, totally surrounded by water. Jews could cross one of the two bridges connecting their island to the others, but to travel any distance, a gondola was needed. I found the answer to my question whether Jews were allowed to travel in gondolas in the fact that Rabbi Simone (Simcha) Luzzato argued that, in view of the peculiar conditions at Venice, it was permissible to use a gondola on Shabbat!

*Author's note: For most of the historical information in this article, I am indebted to Cecil Roth's History Of The Jews in Venice (1930, JPS) and The Jews In The Renaissance (1959, JPS).*



Deena and Debra Panitz give the invocation as Elaine Friedberg, Kenneth Markiewitz look on.

## Volunteer For Israel

By LEONARD PEVAR and GARY ROSEN, Volunteers for Israel

The reward is great, the labor is hard, the pay...you pay your own way.

What kind of *chutzpah* is this? Jewish of course! Who else would dare to ask you to give a month of your life to work 6-7 hours a day, 5½ days a week for no pay as a Volunteer for Israel? You pay for your own plane fare at a subsidized rate.

Once you arrive in Israel, your problems are over. You are met at the airport along with the group of Volunteers for Israel with whom you traveled; taken to an assigned Israel Defense Forces base; naval, air or army. You will be issued work clothes and shoes; male or female quarters and your meals.

Civilian type work will be assigned to the volunteers. This releases a Reserve person to stay in the civilian economy which is in difficult straits: The entire focus of the Volunteers for Israel program is to help strengthen the

economy by creating fewer disruptions to industry. Volunteers assist by doing the necessary work previously assigned to reservists. No military work will be performed by volunteers, and volunteers do not leave base to do their work. The bases are within Israel proper.

This is not all work. After Friday noon at the start of Shabbat volunteers are free to leave the base until work begins again on Sunday morning. Arrangements can be made to spend Shabbat in the home of an Israeli family. Or volunteers can travel. Also at least one tour of Israel is included in the program.

The plane ticket is good for one year, so a volunteer can stay over after fulfilling his or her one month tour of Volunteers for Israel work.

Applications are available for those between the ages 18-65. Please call 478-5660, leave your name, address and phone number, and you will be contacted by a volunteer. There have also been non-Jews participating.

## Free Installation of the One and Only Reinhart Closetmaster® System.

Act Now and Save \$102.00



Say good-bye to the wood shavings and saws, hammers and noise and the awful smell of paint. Then, say hello to the Reinhart Closetmaster® System. The most hassle-free, quality closet system available anywhere. That's because all the sawing, all the painting, all the aggravation is kept at our factory. You see, unlike anyone else, we pre-finish your closet to specifications before we install it. So, instead of a couple of weeks, you'll have a new closet installed in a couple of hours. Quietly and professionally. And right now installation is free with the purchase of any new complete Closetmaster® System, 6 ft. wide or larger, plus doors. That's a savings of \$102.00. But hurry. This special offer ends August 4th. Remember, there's only one Closetmaster® System. And only Reinhart has it.

**REINHART**

FACTORY SHOWROOM  
5225 N. Greene St. (at Queen Ln. in Germantown)  
Daily 9-5, Wed. 'til 8, Sat. 9-4. Credit Cards Welcome  
**SHOP-AT-HOME (215) 849-5500**  
Out of town call collect



# All the nachas fit to print.

## WISHING LOTS OF NACHAS TO:

**MOLLIE AND RONALD EPSTEIN-MAKAR** on the birth of their daughter born June 20.

**RABBI IRA AND LINDA SCHIFFER** on the birth of their daughter, Rachel Rebecca born July 7.

**EILEEN AND HOWARD COHEN** on the birth of their daughter born July 7.

## WEDDINGS! DO WE HAVE WEDDINGS!

**SUSAN A. MILLER**, daughter of **DR. ALFRED D. & BOBBY MILLER**, married **HOWARD JAY KARTEN**, son of **CLAIRE KARTEN** and the late **Bernard Karten** on June 17 at **Adas Kodesch Shel Emeth Cong.** The couple will live in **Newark**.

**PHYLLIS HURSHMAN**, daughter of **SYLVIA HURSHMAN**, married **John Walker McWilliams** at **The Monterey** June 23. The couple will live in **Baltimore**.

**LAURI S. BRENNER**, daughter of **RONA & JERRY BRENNER** married **Jess E. Rosenthal** of **Gaithersburg, Md.** on July 8 at **Temple Beth Emeth**; reception was at the **Hotel DuPont**. The couple will reside in **Texas**.

**JILL VALORIE PAUL**,

daughter of **MR. & MRS. RALPH PAUL** married **David Alan Deardorff** on June 10 at the **Du Pont Country Club**. The couple will live in **Wilmington**.

**DR. ANDREW J. GLICK**, son of **DR. JOSEPH A. & PHYLLIS GLICK** married **Helodia Cazares** June 14 in the **Mark Hopkins Hotel, San Francisco, Calif.** The couple will live in **Wilmington**.

**ROBERT ANDREW LINETT**, son of **DR. RICHARD A. & ALEXANDRA LINETT** married **Janice Beth Corwin** of **Westwood, N.J.** on June 24 at **Temple Aguda Achim Cong.** in **Alexandria, VA.**

**RONALD A. WEINSTEIN**, son of **MARY & JULIUS A. WEINSTEIN** of **Dover, De.** married **Pearl G. (Patti) Rosenblatt** of **Akron, Ohio** on Jan. 1 in **Vail, Col.** Rabbi **Richard J. Shapiro** of **Temple Emanuel** officiated. The couple will live in **Denver, Co.**

**DAVID BERLIN**, son of **AL & SISSY BERLIN** married **ROBIN OCHS** in **June**.

**DEBBIE LONGWILL**, daughter of **RICHARD & BARBARA LONGWILL** married **KEVIN BARUCH FOX** on June 24 at **Temple Beth Torah** in **Miami, Fla.** The cou-

ple will be in **Hallendale, Fla.** **LISABETH JILL KURTZ**, daughter of **LILA & JERRY KURTZ** married **STEVEN E. FALLER** on June 10 at **Temple Beth Shalom**. The couple will live in **Wilm.**

**DEBBIE ELLEN YUCHT**, daughter of **RENEE & JOSEPH S. YUCHT** married **Alan Joseph Lesse** of **Phila.** on June 10 at **Cong. Beth Emeth**. The couple will live in **Roanoke, Va.**

**SUZANNE GOLDBERG**, daughter of **FREDA & ALEC GOLDBERG** and the late **Max Bucholtz**, married **Michael Schlisman** on July 1 at **Temple Beth Am** in **Jenkintown, Pa.** Rabbi **Herbert E. Drooz** officiated. The reception was at the **Warwick Hotel** in **Philadelphia**. The couple will live in **Rydal, Pa.**

**GEORGE E. BRAUNSTEIN**, son of **MR. & MRS. BERTRAM BRAUNSTEIN** wed **Mary Ann Thelen**. The couple will live in **West Bend, Wis.**

**SUSAN GAIL COHEN**, daughter of **MR. & MRS. ROLAND COHEN** wed **Dr. Jeffrey Richard Levine** of **Phila.** on June 3 at **Cong. Beth Shalom**.

**DANA BETH STEIN**, daughter of **BARBARA & SIDNEY STEIN** recently got engaged to **NEAL JONATHAN LEVITSKY**, son of **DR. DAVID & MARILYN LEVITSKY**. The couple will be married on **Nov. 11**.

**JEFFREY LUBITZ**, son of **JOAN AND HERBERT LUBITZ** will wed **April Chase** in **Aug.**

AND THE MARRIAGES ARE LASTING LONG, TOO. CONGRATULATIONS.

**RUTH & BENJAMIN SKLUT** will be celebrating their 50th wedding anniversary on **Aug. 26**. They have two children **SUSAN** and **CHARLES**, and two grandchildren. One grandchild is presently attending **West Point**. **RUTH** will also be celebrating her 72nd birthday on **July 31**.

**MR. & MRS. BERNARD P. HEIMAN** celebrated their 50th wedding anniversary on **May 27**. They are the parents of **HENRY A. HEIMAN**. They also have a daughter living in **N.Y.** and two granddaughters.

**LEAH & CHARLES CHEITLIN** celebrated their

60th wedding anniversary on **June 22**. They are the parents of **DANIEL CHEITLIN, MORRIS FLESCHEMAN, and PHYLLIS GARFINKEL**. They have 12 grandchildren and two great-grandchildren. CONGRATULATIONS AND MAZEL TOV

**DR. GARY SAFIAN**, son of **CHARLOTTE & TED SAFIAN**, was graduated from **Georgetown School of Denistry**. Congratulations on passing the **Delaware State Dental Boards**. He will be practicing in **Wilmington**.

**NORMAN PERNICK**, son of **RUTH & ROGER PERNICK**, was graduated from **George Washington U. Nat'l Law Center** with honors.

**BETTY FINEMAN**, daughter of **SELMA & ALBERT FINEMAN**, received at graduation the **Social Science Trophy, A. Darlington Heyburn Academic Scholarship, SICO Fd. Acad. Scholarship, the Walter J. Udovich Humanitarian Award & Trophy, Concord Historical Society Award, and the Pres. Academic Achievement Award**.

**DEENA PANITZ**, daughter of **SYLVIA & BERNARD PANITZ**, won prizes for all five entries in the **Delaware Press Women Journalism Contest** for **High School students**. Her two first place prizes have been sent to the **Nat'l Fed. of Press Women** to compete in the national contest.

**SONIA S. SLOAN** was elected chairman of the board of the **Delaware League for Planned Parenthood**. **JOAN ROSENTHAL** is a new member of the board of directors and **STEPHEN PERMUT** is on the **Advisory**

Committee.

**RITA KATZ FARRELL** was elected treasurer of **Delaware Press Women**.

**PHYLLIS LEVITT** was elected to serve on **The Delaware Humanities Forum** for a 2½ year term.

**ROBERT T. SILVER** won a 1984 competition sponsored by **Sister Cities of Wilm., Inc.** to visit **Kalmar, Sweden, Wilm.'s sister city**. He won the competition with his essay describing how he watched **Prince Bertil of Sweden** and **Pres. Roosevelt** dedicate the **Ft. Christina Park monument "The Landing of the Swedes."**

**MIKE KATZ** was installed as one of the directors of the **Newark Jaycees**.

**Glen Almahurst**, a horse owned by **DAVID & KAREN ROVINE** owners of **Shady Five Farm** won the **\$203,000 Driscoll place** at the **Meadowlands** in **1:52 1/5**, the fastest time at any harness track this year.

"Obstacles to Recovery Predicted" an article about **RICHARD KARFUNKLE** president of **Econoviews International, Inc.** in the **Wilm. News-Journal** states that **Dick "places himself at the head of the bulls."**

## FRANK KESSELMAN, CLU OCCIDENTAL LIFE 575-1100

ONE ROLLINS PLAZA  
WILMINGTON, DEL.



## STANLEY H. KAPLAN A REPUTATION THAT SPEAKS FOR ITSELF!

"IN THE TESTING GAME,  
STANLEY KAPLAN GETS  
HIGH MARKS FOR  
PREPARING STUDENTS  
FOR SAT'S AND OTHER  
EXAMS"  
—THE WALL STREET  
JOURNAL

"The Stanley Kaplan  
chain got the best  
results in the FTC  
study..."  
—PEOPLE MAGAZINE

PREPARE FOR

SAT · GMAT · LSAT · MCAT

AND OVER 35 OTHER STANDARDIZED EXAMINATIONS



New Location:  
Independence Mall  
Suite 60  
Concord Pike  
(302) 571-8444

## ISRAEL BONDS

For sale and redemption  
information call:

478-2087

## HENRY'S BICYCLE SHOP



OWNED AND  
OPERATED BY  
JOSEPH  
HURSHMAN

RALEIGH · MOTOBECANE · VISTA · ROSS  
2518 W. 4th St. 654-0361



# BERGER BROS. INC

Office experts since 1919.

Located at 3rd & Market, Wilmington  
302-655-7166



# Israeli Elections 1984

*Editor's Note: Jews are now facing two elections - the Presidential elections in the U.S. and the elections in Israel on July 23, which are to bring a new Knesset (Parliament) and a new Cabinet to the country.*

Unlike in the United States, the President in Israel is not elected by direct votes of the people, but by the

Knesset, which is composed of 120 members of all parties who win seats in the elections.

The two dominating parties in the Knesset are the Labor Alignment (composed of Mapai and Mapam) which has 50 seats in the present Knesset, and the Likud (composed of Herut Party with 23 seats, the Liberal

Party with 19 seats, and the Laam group with 4 seats). Because neither of them has a sufficient number of seats in the Knesset to form an absolute majority of its own there, each of them depends on coalition with the Religious bloc, which - together with deputies of another smaller group - can provide on a very small margin,

the majority of votes needed to pass legislation. The National Religious Party, which has only 5 seats in Knesset and is fortified by 4 seats held by the Agudath Israel, an extreme Orthodox Party - practically holds the key to the balance of votes in the Knesset.

## The Contenders: Shimon Peres Yitzhak Shamir

By SIMON GRIVER

It will be third time lucky for Labor party chairman Shimon Peres if he is able to form a government after Israel's elections to the Knesset on 23 July 1984. Having failed to lead the Labor alignment to victory in the two previous elections of 1977 and 1981, he has nevertheless managed to retain the leadership of the opposition Labor party and it looks as if this time it is "now or never" for Shimon Peres.

Peres' supporters view his achievement in remaining at the helm of the Labor party, despite the failure to win in successive elections as demonstrating his courage in the face of adversity and his tenacious determination to rebuild the battered party since 1977. His opponents interpret his survival in terms of an appetite for power. However nobody can or would deny that Peres' extraordinary talents and perseverance have played an outstanding part in building the Jewish state.

### Labor Leader

Born in Poland in 1923 Peres came to Palestine as a small child and grew up in Tel Aviv. He joined the Labor youth movement and at age 16 he enrolled at the Ben Shemen Agricultural School near Lod. After pioneer training at Kibbutz Geva, he helped found Kibbutz Alumot in the Lower Galilee. His leadership talents were already evident and in 1943 he became Secretary of the Labor Youth Movement. In 1947 he left the kibbutz at the request of David Ben-Gurion to work in Haganah headquarters in Tel Aviv where he took charge of important tasks relating to arms and manpower.

On the establishment of the state in May 1948 he was sworn into the Israel Defense Forces. He was appointed head of Naval Services and after the War of Independence was posted to the United States as head of the Defense Ministry delegation there. Returning to Israel in 1952 he was made deputy director-general of the Defense Ministry and shortly afterwards at the age of only 29 he was promoted to director-general.

### Impressive Career

During this period he was a close aide to prime minister David Ben-Gurion and in the coming decade he remained a loyal ally and confidant of Israel's first prime minister. As head of the Defense Ministry Peres played an important role in planning the successful Sinai Campaign of 1956, and he oversaw the development of Israel's nascent armed forces into a modern military machine.

In 1959 Peres was elected to the Knesset and became deputy defense minister. He resigned this post in

1965, leaving the Labor party along with Ben-Gurion to form the breakaway Rafi party. After Ben-Gurion resigned from politics it was Peres who negotiated a reconciliation with the mainstream Labor faction, helping to bring a unified party under the leadership of Golda Meir.

He became a member of the cabinet from 1969 onwards, heading the Ministries of Absorption, Transport and Information. In 1974, in the wake of the Yom Kippur War, he was appointed minister of defense, charged with the responsibility of rebuilding

Yitzhak Shamir has been renowned as a tenacious fighter since the days when he headed Lehi, a splinter group of underground militants who broke away from Menachem Begin's Irgun Zvai Leumi in the 1940s. Yet Shamir did not fight for high political office. Historical circumstances destined him to be in the right place at the right time. So it came about that in September 1983, the Herut party elected him as its leader following Menachem Begin's surprise resignation. Now former foreign minister Yitzhak Shamir goes to the Israeli

worked on construction sites and later in an accountancy office in order to support himself.

At the same time he joined the Irgun Zvai Leumi, leaving in 1940 for Lehi, the Stern group, an organization considered even more militant than Begin's IZL (Etzel). Menachem Begin, whose own "fighting family" conducted many bombings and assassinations, once urged moderation on the firebrand Shamir, "Do you think you'll get the British to go by waving a few pistols about?" he asked him.

### His Own Man

Shamir went his own way: imprisoned twice by the British, he escaped from Mizra the first time disguised as a Polish soldier and continued keeping the English at bay by posing as a rabbi. Captured again he was sent to Eritrea in Africa. Once more he escaped, surfacing in France via Djibouti. Here he was reunited with his wife Shulamit, whom he had met and married during his time with Lehi. In his early career, Shamir emerged above all as a man of conviction and of action. His supporters of today - from within the 'fighting family' and from the broader political spectrum - see him as a leader loyal to himself, his beliefs and to his people.

Returning to Israel after its establishment in May 1948, Shamir was officially a wanted man. The authorities chose not to prosecute him for what were considered by opponents as "criminal excesses" committed by Lehi. Instead, his ability in the underground was harnessed for the national good and he was recruited by Israel's "Mossad" (secret intelligence service) in 1955.

In 1966 he retired from the Mossad and following a reconciliation with his former rival Menachem Begin, joined Herut in 1967. He headed Herut's department for Soviet Jewry and later their Organization Department before being elected to the Knesset in 1973. Subsequently he became party chairman. Uncharismatic yet thoughtful and above all 'credible' - Shamir was moving towards the top.

### New Leader

Following the Likud's election victory in 1977 (the Likud is an amalgamation of the Herut and Liberal parties), he was appointed Speaker of the Knesset and after Moshe Dayan's death in 1981 succeeded him as Foreign Minister. In September 1983 - almost effortlessly when the public looks back - Israelis saw Begin resigning and Shamir stepping into his place as the natural heir to the prime minister's office.

(Continued to Page 10)



morale in the IDF. During his term of office the Entebbe Operation was successfully accomplished.

### Ups And Downs

When Yitzhak Rabin resigned as prime minister in 1977, Peres became acting prime minister in the several months leading to the election. It was he, therefore, who was destined to lead the Labor party to its first, and outright defeat in 29 years at the hands of Menachem Begin's Likud. Despite a determined and often acrimonious challenge from former prime minister Yitzhak Rabin, Peres once more headed the party when it was defeated, this time very narrowly, for a second time in the 1981 elections.

Peres did not face a challenge to his leadership before the upcoming election when former President Yitzhak Navon (who according to the opinion polls would make a much more popular leader than Peres) agreed to stand down in the interest of party

(Continued to Page 10)

people to seek a mandate to serve a full term as prime minister. Though small physically, Shamir's image is one of maturity, self-confidence and reliability. It was no coincidence that Shamir rather than any of his colleagues and rivals such as Arens, Levy and Sharon was chosen by Herut to be the man in charge.

### With Betar To Eretz Yisrael

Shamir was born Yitzhak Jezrenicki in Poland 69 years ago. His parents had supported the Bolsheviks in the Russian revolution and were also committed Zionists. Shamir was educated at the Hebrew high school in Bialystock and when he was 14 he joined the Betar youth movement which followed the Revisionist teachings of Ze'ev Jabotinsky.

The young Shamir began studying law at Warsaw University but broke off these studies in 1935 to leave for Palestine. His father took a bank loan to pay for his son's passage to the Middle East. In Palestine Shamir



## WHAT'S HAPPENING Kayla Gavish



### Religious Persecution

All holy places, properties and cemeteries were confiscated or destroyed.

Hundreds were dismissed from jobs and denied business licenses, pensions and income under government orders.

Children were not allowed to attend school. Professors were purged from universities.

More than a thousand were arrested and brutally tortured.

Jews in Nazi Germany? Could be.

But actually I am describing what has happened to the Bahai community in Iran since the 1979 revolution. The Khomeini government has undertaken a systematic campaign to exterminate Bahai leadership and destroy the community and its institutions. The fundamentalist Muslims view Bahai as heresy.

There are about 300,000 Bahai members in Iran, its largest religious minority. The Bahai religion was founded in Iran in the mid-19th century. Since that time it has spread to every country in the world. Its central teaching is the oneness of God, the oneness of religion and the oneness of mankind. The Bahai members see as their mission to bring about the unity

of mankind, world peace and world order.

The Bahai world center has been in Haifa for over 100 years. Many of us who have toured Israel have visited the beautiful Bahai Temple in its spectacular setting overlooking the Mediterranean.

Because Bahai members in Iran traveled frequently to their world center in Haifa the Iranian government accuses them of Zionism and espionage. But it is because they remain steadfast to their faith rather than convert to Islam that makes them victims of Khomeini's persecution. And like Iranian Jews only those who are able to escape through clandestine means can leave Iran.

Bahai leaders around the world are seeking support for condemnation of the Iranian government for its treatment of their people. Resolutions and other declarations have been passed by many countries. Congress has passed a joint resolution. The U.N. has appointed a special Human Rights investigator to study this situation. An international conference on the persecution of the Bahais in Iran is under consideration.

(Continued to Page 10)

## ON THE OTHER HAND N. Even-Or



### Manuscripts, Magistrates And Money

When Matitya bar Yona, 500 years ago, wrote and beautifully illuminated a Bible for Israel Pinchas of Prague, he could never have dreamed that someday his work would be valued at \$500,000 and be the subject of protests and legal actions. But that's just what happened.

In an April press release Sotheby Parke Bernet announced that on June 26, 1984, there would be an auction of what they termed "highly important Hebrew printed books and manuscripts." The centerpieces of the auction were to be a 15th century Hebrew Bible from Prague and a 14th century prayer book from Spain, illustrated with micrography, a peculiarly Jewish art form in which the lines of drawings are actually miniscule Hebrew script.

On June 19, the Central Conference of American Rabbis (Reform) voted unanimously to "take all necessary steps to stop this sale until the ownership of these books and manuscripts is clearly established."

And two days later the New York State Attorney General's office said that, in response to concerns raised by members of the Jewish community, it was investigating the legality of

the proposed sale. When Sotheby's said that it was their practice not to reveal the identities of buyers or sellers unless ordered to do so by a court, the Attorney General told them that he was prepared to subpoena the required documents.

In the meantime, two other groups joined in questioning the legality of the auction and demanding that it be cancelled: the B'nai Brith Anti-Defamation League, and the Jewish Restitution Successor Organization, which was given authority by the United States Military Government in Germany after the war to receive Jewish property for which there was no identifiable heir.

Why the controversy about these particular books and manuscripts? Where did they come from and how did they come to be presented to Sotheby's for auction at this time?

According to Rabbi W. Gunter Plaut, president of the Central Conference of American Rabbis, the books and manuscripts, 33 of them, had before the war belonged to a Berlin seminary known as the College for the Scientific Study of Jewish Culture. Rabbi Plaut was a student at

(Continued to Page 8)

Designers' Image  
CONTEMPORARY & TRADITIONAL

# 50% OFF SALE

Everything for Summer!

- Buy first suit at 20% off ... receive second at 50% off
- Buy first sportcoat at 20% off ... receive second at 50% off
- Buy first pair of slacks at 20% off ... receive second at 50% off
- Buy first dress shirt at 20% off ... receive second at 50% off
- Buy first pair of shoes at 20% off ... receive second at 50% off
- Buy first tie at 20% off ... receive second at 50% off
- Buy first sport shirt at 20% off ... receive second at 50% off
- Buy first formalwear at 20% off ... receive second at 50% off

\*50% OFF of lower priced item

Designers' Image  
CONTEMPORARY & TRADITIONAL

MEN'S CLOTHIER

Rt. 202 & Brandywine Raceway  
5525 Concord Pike, Wilm., DE • 478-4555  
Open Every Week Night 10-9; Sat. 10-6; Sun. 12-5



# PEPSI.

THE CHOICE OF  
A NEW GENERATION.™

Pepsi, Pepsi-Cola and The Choice of a New Generation are trademarks of PepsiCo, Inc.



# Of Gondolas And Ghettos

By RONALD G. FINKELSTEIN

On our last day in Venice, as the sun came out and the air turned balmy, Nisson and I determined that it was now or never to take a ride in a gondola. Up to then, we had watched other tourists gliding beneath the arches, feeling half envious, half amused. Now, the envy won out, we found a willing gondoliero, and went happily gliding through the back-alley canals with the rest. It was quiet, almost magical. Only later did it occur to me to wonder, were the Jews who lived in Venice's ghetto allowed to ride in gondolas?

We had just visited the ghetto a few days before, so the question was not so strange. In fact, our trip to Italy had been inspired by a TV documentary about the historic ghetto, written and produced by opera star Regina Resnik. It showed the splendidly restored Spanish, German and Levantine synagogues, part of the ambitious renovation of the ghetto that in 1983 won a prize for the Jewish community as "most dedicated to the artistic restoration of Venice." (Paolo Barbaro, "Nel Primo Ghetto della Storia," *La Stampa*, Oct. 20, 1983.)

Now, we found ourselves passing through gray columns which still bear the marks of the guard gates, which used to shut the Jews in

every sundown. As we wandered through the dark, narrow streets, we became aware of the excessive height of the buildings — seven and eight stories high. With a growing population and walls all around, there was nowhere to build but up. Yet, the size of the synagogues was restricted, so that several had to be built to accommodate the population, which at its zenith approached 5000.

How did Venice's Jews feel about their ghetto? Established in 1516, it was the first in history, so their experience was a new one. To us, it comes as a surprise to find Jewish chroniclers recording with exultation the establishment of a ghetto in Verona 83 years later. And on behalf of "the Holy Congregation" of Venice, Leone da Modena, famed orator and scholar, wrote a letter of congratulations to the Jews of Verona. That community instituted a special annual celebration to commemorate the event. Evidently, the Jews of that period saw two sides to the question. While the ghetto kept the Jews in, it did provide some security against violence. But above all "it rendered possible an intensive development of Jewish life, excluding all antagonistic influences, and rendering assimilation impossible," according to Cecil Roth. (Cecil Roth, *History of the Jews in Venice*, p. 273.)

Venetian Jews were ambivalent not only about the ghetto but also about the government that put them there. Despite Venice's continual restrictions, beginning long before the ghetto, on where they could live, what occupations they might pursue, where they could do business, whom they could employ, what badge or hat they must wear, what extra

taxes they must pay, Jews showed their admiration and patriotism again and again for the Republic that tolerated them. Wrote the eminent physician David de' Pomi around 1580, "The institutions of Venice are divine. God Himself has promised by the mouth of His prophet to preserve the Holy Republic." (Roth, p. 193.) A refugee from Spain, Don Isaac Abrabanel praised Venice's constitution, seeing it as a proof of Samuel's wisdom in warning the Jews against having a king. During the war with Turkey in the 16th century, two Jewish bankers, Abraham and Anselm, each offered 1000 ducats to a public subscription on behalf of Venice. Many more such patriotic actions could be listed.

To her credit, Venice protected her Jews from violence, allowed immigrant Marranos from Spain and Portugal to return to Judaism, outlawed the kidnapping and baptism of Jewish children, and never insisted that Jews attend sermons aimed at their conversion.

It was not benevolence but practicality, however, that was behind the Republic's tolerance. Usury was a sin in the eyes of the Church, so Venice needed the Jews to maintain loan banks to tide the poor over emergencies.

She also wanted the lucrative trade brought by Levantine Jewish merchants. So, in spite of frequent fulminations by the clergy against the

polluting effect of Jews in the city, Venice never expelled them, as did so many other cities, though it came very (Continued to Page 11)



Venetian ghetto.

**PATRICIA'S**  
TAKE-OUT SHOPPE  
& RESTAURANT  
**"Party Trays"**  
Luncheon  
Dinner  
1312 Philadelphia Pike  
**798-5545**

**Attention Swimmers!!**

**40% Off All Swimwear**  
Not Valid On Discounted Or Reduced Items

Suits by: •Speedo •Head •Hind Wells specializing in team-wear

**Swat Pro Shop**  
"We Suit Your Needs"  
Check Our Aerobic Wear!  
1312 Philadelphia Pike Wilm., DE 19809  
Hours: Mon.-Tues.-Thurs. 10-6  
Wed. & Fri. 10-8; Sat. 10-5 **798-1898**  
Expires 7/31/84

ONLY THE FINEST

**THE MARKET**

Talleyville Shopping Center  
478-8837

- MEAT
- SEAFOOD
- DELI
- PRODUCE
- GROCERY

Sunday Brunch, Saturday too,  
at **The Market**

Chilled Melon  
Lox  
Kippered Salmon  
White Fish Salad  
lettuce, tomato, onion  
Bagels, Rolls,  
Cream Cheese  
Coffee  
**\$4.95**  
per person

Party Trays  
Sandwich Trays  
Fish Trays  
Fruit & Cheese Trays  
personally made by  
Ernie Johnson  
(formerly of Jack Lundy's)  
Fruit Baskets  
for all occasions by  
Tony Ciritella  
(formerly of Janssen's)



## JFD Annual Meeting —

(Continued from Page 2)

munities of Lower Delaware and Newark. This will be a high priority in the coming year and can more readily be achieved with the availability of more funds. These communities are an integral part of our state-wide Federation and represent growing needs for all age groupings."

ZefTel commented on Jewish education needs for our children. He stated, "Frankly, we have declining enrollment problems at Albert Einstein Academy, which in turn creates serious financial concerns. We have a good school and a group of committed parents and teachers are working very diligently to strengthen enrollment and to raise supplementary funding to secure the financial stability of the school. Federation will continue to support viable Jewish Day School as long as there is sufficient community demand."

"The future of our campsite facilities still needs to be resolved — we continue to use the Sellers Estate under lease from the county and we continue to explore other options aimed at increasing our land area around our Federation and JCC complex. We hope to have a satisfactory resolution before the end of 1984."

"We have started to reorganize and revitalize our endowment program through the efforts of Harold May, Sonny Chaiken, Sonny Schutzman and the guidance of Morrie Lapidus. We look forward to the endowment program strengthening our financial base and providing an ongoing source of funds for our community agencies."

"I have touched only lightly on some of our programs — problems and progress. Our agencies are doing an excellent job in their own areas and their staff, directors and boards are to be commended for their excellent programs — fiscal responsibility and committed service to the community."

"Our physical facilities are getting

## Other Hand —

(Continued from Page 6)

the seminary until 1935, and over 50 other members of the Central Conference had studied there.

In a June 22 article covering the protest, the *New York Times* quoted Plaut as saying, "I knew the library and I've seen these books. It is inconceivable to me that these items were passed voluntarily into the hands of private ownership. The likelihood is that these items were given in trust to individuals with the hope that someday they would be returned to the Jewish people." The *Times* article also reported Sotheby's saying that the owners of the books were Jews and that they were convinced that the ownership was legal.

While the controversy raged and the New York City Consumer Affairs Department refused to issue a permit for the auction, I had the great pleasure of examining the beautiful *Tanach* (Bible) and *Machzor* (prayer book) at Sotheby's. It was a rare privilege and a delight.

The *Tanach* is written entirely in Hebrew, in brown ink on uterine vellum, a smooth translucent parchment made from the skin of unborn lambs. It is fully vocalized (vowels under the consonants) and cantillated (musical notation for chanting). The first word of each book of the Bible

older and this year we began to face up to significant maintenance costs. Through the joint efforts of the Center, United Way and Federation, we repaired the JCC roof and we have started plans to make repairs to other segments of our physical plants. I want to publicly express our appreciation to the United Way who have assisted us with some of our capital maintenance needs for JCC building repairs.

"None of the Federation administrative activities would be possible without the excellent efforts of our staff. Morrie Lapidus has advised, guided and supported all of our efforts and his activities in our annual campaign have again demonstrated his outstanding professional abilities."

"Bob Kerbel, our new assistant executive director and Evelyn Lobel, our new staff associate, both took hold immediately and their supportive efforts have been invaluable. I also want to thank our office staff, Lois, Judy, Joan, Heidi, Keiko and Karen Moss, editor of the Voice."

"But most of all I want to thank a very special person. An understanding and supportive wife who shares my problems and my time, at the expense of her own, to make this a workable position."

Senator Joseph Biden, who was in attendance, commended the Jewish community on the occasion of its 50th anniversary and indicated that the Federation and its constituent agencies were a moving force in providing high standards of human service to the Jewish community and general community at large.

Written messages of best wishes to the Federation from congressional leaders, the United Jewish Appeal, the Council of Jewish Federations, the United Way of Delaware and the Rabbinical Association of Delaware were also read.

The D'var Torah was presented by Rabbi Ira Schiffer of Beth El in Newark who was recently elected president of the Rabbinical Association of Delaware.

and the first word of many of the portions (*parshayot*), are illuminated in burnished gold, orange, red, green, yellow and blue. Both the artistry and the materials used are elegant: the gold is gold leaf and the blue is made of ground lapis lazuli. Some of the pages are embellished with what are known as foliate decorations in the margins, top and bottom. In addition to the Rashi commentary in Rashi script on each page, there are many glosses (commentaries) the majority classical but some contemporary.

The ownership history of the *Tanach* is of significance, too. It was held by the great 18th century German philosopher Moses Mendelssohn for a time, and was referred to in his Bible commentary. According to George Snyder, of Sotheby's Judaica department, Mendelssohn stated that the Prague *Tanach* was "of great linguistic value to him for the correct reading of the French words in Rashi."

On the very day I was examining the *Tanach* and the *Machzor* in New York, the Jewish Theological Seminary (Conservative) negotiated purchase of these two items from Sotheby's prior to the planned auction, an anonymous donor having provided the funds to the Seminary for the purchase. The purchase price has not been revealed, but Sotheby's had valued the *Tanach* at \$500,000 and the *Machzor* at \$200,000.

## LETTERS to the Editor

Dear Editor:

I'm doing research on the following towns in Russia where my ancestors lived:

Semenovka & Konotop in Chernigov Province; Shepetovka and Sudilkov in Volynhia Province, Faleshti in Bessarabia (formerly Rumania) and Priluki in Poltava Province.

I would like to know if you know of any Landsmanshaften Societies or any persons in your area that might have information about the above towns.

Any information you could send me would be greatly appreciated.

Miriam Weiner  
47-3 Woodlake Road  
Albany, New York 12203  
518/456-5578

To the Editor:

Yes! There is a Lower Delaware Jewish Community! Reading the 50th Anniversary Issue of *The Voice*, one would not know that there is and has been an active, committed society of Jews in Dover and Lower Delaware for many years. Even the solitary, microscopic reference to the population on the 1952 Map of Greater Wilmington (p. 45) was erroneous.

Look in the Federation records, past and current, and you will find the names of those who have served on the Federation board of directors, those who have devoted themselves to the annual Campaign, those who have influenced Women's Division and the Career Women's Council. In the past a member served as vice-chairperson of the state JCRC, and currently the

## Israeli Teens —

(Continued from Page 4)

needs, recreation programs, etc. The delinquency rate alone was 90% with many severe drug problems.

As the program has evolved, attention has been directed particularly toward the youth and aged of the community. Significant strides have been made to date in employment, programs for the aged and drug rehabilitation.

What is still critically needed, and this is our collective responsibility, is recreational facilities for all age groups, additional professional staffing to work with the "street youth," library facilities, religious cultural activities for families, a club for the elderly, summer camp programs.

What has been particularly en-

Apparently the sale of the two major items in the collection to an institution that would keep them available to the Jewish community as a whole satisfied many, if not all, of the protestors. The auction of the other items was allowed to proceed as scheduled, and, according to Sotheby's, was "quite successful."

But the story still seems unfinished to me. Who are the owners who offered these rare books and manuscripts for sale through Sotheby's? The Jewish Theological Seminary says that the identities of the owners were not revealed to them. How did the most recent owners gain

community is proud to have one of its own as the state JCRC chairman.

Not only is there active participation in Federation below the Canal, there is also a vibrant and active synagogue, Congregation Beth Sholom, an award winning chapter of Hadassah, a fledgling chapter of B'nai B'rith, and an ecumenical group, the Delaware Association of Christians and Jews.

The "historians" working on the anniversary issue could have at least referred to the chapter on Lower Delaware in *Delaware and the Jews* for some history and photos.

It is unfortunate that after 50 years the Federation continues its myopic view of itself. The map title contained an ironic truth. For how many more years will Federation be The Jewish Federation of Greater Wilmington? Yours was a sin of omission.

Sincerely,  
Phyllis Levitt,  
Lower Delaware JCRC  
Chairperson  
610 North Governors Ave.  
Dover, DE 19901

## Editor's Note

On behalf of the Voice Committee, I want to express my personal apology to the Lower Delaware Jewish community for the inadvertent omission and failure to include in the 50th anniversary issue of the Voice a historical summary and description of the many contributions that have been made by the Jewish leadership and residents of lower Delaware during the past five decades.

It is our intention to include in a future issue of the Voice a full historical depiction of the growth of the lower Delaware Jewish community and a current review of the vital religious and cultural activities that have been instrumental in strengthening Delaware Jewry.

couraging has been the active involvement of the local citizens in the grass roots planning. Families are no longer leaving the area but are committed to enriching their own lives. They are a proud people anxious to provide a decent quality of life for their respective families.

Our Jewish Federation share of this important program is close to \$800,000 over a five year period. It is a crucial responsibility to which we must be responsive.

These Jesse Cohen families are our families, no less than the families of our Delaware Jewish community.

This massive "urban renewal" program has already made a difference but much has still to be done.

possession? Into whose hands will the huge sums of money paid for these treasures be passed?

We may never know. What we do know is that the work which Matitya bar Yona took almost two years to complete survived half a millenium of pogrom and holocaust, of hate and greed. *Baruch ha-Shem*, it is in loving hands again today.

## Correction

The name of the new UJA national chairman is Alexander Grass, not Alexander Gross. The *Voice* apologizes for the inadvertent typographical error.



## Twinning —

(Continued from Page 3)

Such twinning programs are being held in many Jewish communities in America. An opportunity is thus available for a young Jew to be reminded of a Soviet counterpart who is denied the right of his or her own ceremony in the Soviet Union. In the process, the child, the family and all who share in the occasion are made aware of the suffering of our Soviet Jewish family. Since there they are not free to learn of their Jewish past or to work for their Jewish future, support here for their cause is vital and an absolute necessity. Unlike the Jews of the Holocaust who suffered a sense of isolation from the outside world and despaired, the Soviet Jews must be reassured that they are not alone.



## Jewish Family Service of Delaware

Jewish Family Service is a constituent agency of the Jewish Federation of Delaware and a member agency of the United Way of Delaware.

### A Vote Of Thanks

By Arnold Lieberman,  
Executive Director



Even with a competent and dedicated professional staff, no agency can function well overall without an effective board of directors. Jewish Family Service has been blessed with both superior leadership and membership on our board for the past several years, and this is reflected in the current status of the agency.

At our recent annual meeting the following officers were elected to lead the agency for the next two years: president, Gilbert Sloan; vice presidents, Shirley Karfunkle and Efreim Lieber; treasurer, Sybil Zefel; and secretary, Joan Wachstein. New members elected to the board include Betty Chambers, Stephen Freilich, and Ruth Ann Ger. Rabbi Kenneth Cohen will represent the Rabbinical Association of Delaware on our board.

Two long-time active members retired from the board and will be missed. Past president Jim Chaikin and Myron Milbouer served the agency well during their terms.

Service on a board of directors is sometimes overlooked as a most significant form of voluntarism. These members of the community serve on a board such as ours because they believe in the need for our agency. They, along with everyone else, hope we will never require the kind of services that we provide. Yet they accept that it is essential to have such services available. Therefore there is no self-serving aspect to giving Jewish Family Service their time and effort. It is rather a feeling of concern for the overall well being of our community and especially for those most in need, that motivates their involvement.

This form of voluntary service is often seen as less significant than more dramatic direct service, but without it, the other would not likely occur.

These people certainly deserve the thanks of the community which they truly serve.

### Dear Rachel

Dear Rachel,

I am an open-minded, relatively unprejudiced person, or at least that is what I always thought until recently. My cousin, who has been trying unsuccessfully to have a baby for years, finally adopted a Korean infant. She and her husband are very happy. I find myself feeling uncomfortable, mainly I think, because everyone who looks at this child will always know that he wasn't born Jewish. He just doesn't look right with a yarmulka on his head on Friday night. This is totally irrational, I know, because Jews come in all races and if they adopted a white baby, it would have been just as much a convert as this one. I have been avoiding them because I realize this problem is mine and not theirs, but sooner or later, they will wonder why I haven't called. What can I do to get over this feeling, because my cousin and I are very close and I don't want to hurt her?

Uncomfortable Cousin  
Dear Cousin,

Most of us in America have the idea that all Jews look and act like they came from

Europe. That is what most of us grew up with and are used to. However, as any visitor to Israel can attest, Jews, come in all shapes sizes, and ethnic and racial groups.

Since you have been "conditioned" to think of Jews one way, your best bet is to "condition" yourself to a different reality. Avoiding your cousins and their new baby will only exacerbate the problem. As our sages said, "Kol hatchalot kashot," all beginnings are difficult. So visit them often. You will find your old prejudices disappearing as you develop a relationship with the baby, and it will help to see that the love between parent and child in this Jewish family is as strong as in others. If you give yourself a chance to get to know your new cousin as an individual and as part of the family, you will find that you are the same, unprejudiced person you always thought you were.

Rachel  
Send letters to "Rachel, c/o Jewish Family Service, 101 Garden of Eden Rd., Wilmington, DE 19803." Names and details will be altered in published letters to protect your privacy.

### Have You Heard?

A passenger plane was flying over the jungle, when the pilot announced that they had lost the motor, and the plane was forced to land in a slight clearing in the jungle. After the pilot told the passengers that this was unexplored territory, and the passengers would most likely never be found, a Jewish passenger asked her husband, "Did you pay the rent before we left?" He said yes.

"Did you pay the newspaper bill before we left?" He said yes.

"Did you make your Federation pledge?" "No," he said. "Then, there's nothing to worry

about — they will find us!" exclaimed his wife.

From B'nai B'rith  
Tachlis

MAKE YOUR PLEDGE NOW!

### FULLER BRUSH SPECIALS:

Insecticide  
Insect Repellent  
Moth Proofer Spray

Tom Seidel  
798-1770



**Elegante-Catering**

(302) 475-9300 (302) 475-5300

**ANNIVERSARY SALE**  
Eight Great Years  
Serving Wilmington & Vicinity

Veal Patties	\$3.29	lb.
Filet Steaks	2.79	lb.
Corned Beef (to cook)	1.89	lb.
Ground Beef	2.39	lb.
Beef Cubes	2.79	lb.
N.Y. Strip Steaks	3.59	lb.
Chicken Legs & Thighs	1.49	lb.
Chicken Gourmets BBQd (all cooked)	2.09	lb.
Cooked Brisket	6.49	lb.

**Modern Kosher**  
475-9300

# Thriftway

5%  
SR. CITIZEN  
DISCOUNT  
EVERY TUESDAY ONLY  
SEE COURTESY DESK  
FOR DETAILS

New Choice  
& Welcome



INDEPENDENTLY  
OWNED SUPERMARKETS

**Tri-State Mall**  
I-95 & NAAMANS RD.  
CLAYMONT, DEL 19703  
STORE HOURS: Sunday 9AM-5PM  
Mon.-Sat. 8AM-9PM

**Penn Mart Center**  
DU PONT BLVD. & BASIN ROAD  
NEW CASTLE, DEL.  
STORE HOURS: Sunday 8AM-6PM  
Mon.-Sat. 8AM-10PM

**Graylyn Crest Center**  
1718 MARSH ROAD  
WILMINGTON, DEL 19803  
STORE HOURS: Sunday 8AM-6PM  
Mon.-Sat. 8AM-9PM

**Faulkland Road**  
CHESTNUT RUN CENTER  
1710 FAULKLAND RD.,  
WILMINGTON, DEL. 19808  
STORE HOURS: Sunday 8AM-6PM  
Mon.-Sat. 8AM-9PM

SAVE  
YOUR TAPES  
Synagogue,  
Churches &  
organizations  
receive 15% off  
regular tapes.  
See courtesy  
desk for  
details.

1-800-831-1111

800-831-1111 (302)

800-831-1111 (302)



# Obituaries

## Fannie S. Harwitz

Fannie S. Harwitz, 74, 9248 Collins Avenue, Surfside, Fla., died June 10 in North Miami General Hospital. She was formerly of 314 N. Broom Street, Wilmington, Del.

Mrs. Harwitz was an honorary life member of the Junior Board of General Division in Wilmington. Her husband Dr. Morris Harwitz, died in 1980. She moved to Florida in 1982.

She is survived by three sons, Gordon of Long Island, N.Y., Dr. Daniel of North Miami and Paul of Sherman Oaks, Calif., a sister, Estelle Rednor of Jenkintown, Pa., and two grandchildren.

Funeral services were held June 13 from the Schoenberg Memorial Chapel, 519 Philadelphia Pike with interment in the Beth Emeth Memorial Park, Faulkland Road.

In memoriam the family suggests contributions to Jefferson Medical College, 11th & Walnut Streets, Philadelphia, Pa. 19107.

## Gregg S. Kedan

Dr. Gregg S. Kedan, 35, of 33 Midland Road, a veterinarian specializing in animal skin diseases, was found dead June 11 at his office in Fairfield, Conn.

Dr. Kedan, whose wife formerly lived in Wilmington, graduated from the University of Georgia Veterinary School in 1972, and served a two-year residency at the Animal Medical Center in New York City. He was one of 30 animal dermatologists in the United States.

Dr. Kedan was active in the March of Dimes and was a member of the Big Brothers of the Bridgeport area. He was a past officer of the Connecticut Veterinarians Association. He was a member of the Masonic order in Washington, D.C., and belonged to Congregation Beth El in Fairfield.

He is survived by his wife, the former Lisette Woloshin; a son, Daniel and a daughter, Heather B. both at home; his mother, Betty Kedan and two sisters, Lynn K. Loss and Janet L. Katz; and his grandmother, Becky Melman, all of

Washington.

Services were held June 14 at King David Cemetery, Falls Church, Va.

## Bessie Higger

Bessie Higger, 87, of the Kutz Home, 704 River Road, died of heart failure June 12 at the home.

Mrs. Higger was a member of Congregation Beth Shalom in Wilmington.

Her husband, Ralph, died in 1955. She is survived by four daughters, Ruth Levine of Rockville, Md., Sarah Wolfe and Rose Levine, both of Forest Hills, N.Y., and Bernice Seeherman of Ridgewood; five grandchildren and three great-grandchildren.

Services were held June 14 at the Schwartz Bros. Memorial Chapel in Forest Hills.

Interment was in Beth Moses Cemetery, Farmingdale, N.Y.

## Aaron Gordon

Aaron Gordon, the infant son of Dr. Richard and Helaine Gordon, of 606 Whitby Drive, was stillborn June 17 in General Division.

In addition to his parents, he is survived by two brothers, David and Brett, both at home; his maternal grandparents, Mr. and Mrs. Harry Shooster of Philadelphia; and his paternal grandparents, Mr. and Mrs. Norman Gordon of Wilmington.

Services and burial were private.

## Markus Blond

Markus Blond died in Nice, France on June 17.

Mr. Blond lived in Wilmington for a couple of years and participated in Senior programs at the JCC including the Yiddish Conversational group. He also attended services at Beth Shalom Congregation.

He is survived by daughter, Charlotte Acquavotta, who lives in Wilmington, a wife and two sons who live in Paris, France.

Interment was in Paris.

## Rubin Maisel

Rubin Maisel, 78, of 1801 N.W. 15th Ave., formerly of Colony North Apartments, Wilmington, Del, died of pneumonia June 18 in Doctors General Hospital in Florida.

Mr. Maisel was proprietor of the Dutch Inn in New Cas-

tle from 1962 until 1970. He retired to Florida in 1973. Before owning the Dutch Inn he had been a paperhanger.

He was a member of Adas Kodesch Shel Emeth Congregation on Washington Street Extension in Wilmington. He was an Army veteran of World War II.

Surviving are his wife, Sylvia; two sisters, Nettie Tomases and Ida Sund, and a brother, John Maisel, all of Wilmington.

Services and burial were Tuesday in Plantation, Fla.

In memoriam the family suggests contributions to the Adas Kodesch Shel Emeth Congregation, Washington Boulevard and Torah Drive, Wilmington, Del. 19802.

## Shirley Schreiber

Shirley Schreiber, 67, of 8620 Society Drive, B'nai B'rith House, Claymont, died July 1 in the Delaware Division.

Mrs. Schreiber retired in 1979 after 12 years as a salesperson for Susan's Uniforms in Wilmington. Before that, she and her husband Nathan were co-owners and operators of Schreiber's Liquor Store in Wilmington until his death in 1968.

She was a member of the Adas Kodesch Shel Emeth Congregation, of the Wilmington Chapter of Deborah and the Jewish Community Center.

She is survived by two daughters, Judy Stein of Cherry Hill, N.J. and Maralyn Gold of Princeton Junction, N.J.; a brother, Leonard Scheier of Bayside, N.Y.; a sister, Jean Schneider of Brooklyn, N.Y. and six grandchildren.

Funeral services were held July 1 at the Schoenberg Memorial Chapel, 519 Philadelphia Pike.

Interment was in the Adas Kodesch Shel section of the Jewish Community Cemetery on Foulk Road.

In memorial the family suggests contributions to Deborah c/o Betty Abrahams, 2307 Society Drive, Claymont, Del. 19703.

# שמעון אומר

## 'Simon Says' By Simon Steinberg



### למדו עברית Learn Hebrew

#### Self-Taught Hebrew

6	Lesson II		
and	... ו .16	lesson	שעור .11
v...		shee-oor	
now	עכשו .17	name	שם .12
ahkh'-shav		shehm	
in	... ב .18	family	משפחה .13
b...		meesh-pah-bah'	
first	ראשון .19	wherefrom	מאין? .14
ree-shohn		meh-ah-yeen	
second	שני .20	from	מ. מ. (מן) .15
sheh-nee		mee.meh.(meen)	

- לא. אני מהונגריה ועכשו
- לא? אני בישראל.
- מאין את שושנה?
- אני מפולין.
- את בפולין?
- לא. אני מפולין.
- עכשו אני בישראל.
- מאין רחל? - היא ממצרים.
- מאין משה? - משה ממרוקו.
- אתה מהונגריה, את מפולין.
- היא ממצרים והוא ממרוקו.
- עכשו גם אתה וגם את.
- היא והוא בישראל.
- מאין דוד? ...
- מאין שושנה? ...
- שלום! עכשו שעור ראשון?
- לא!
- עכשו שעור שני?
- כן, עכשו שעור שני.
- מי אתה? - אני דוד.
- דוד שם?
- דוד שם ושם-משפחה.
- דוד הם ורות דוד.
- מי הוא? - הוא שמואל.
- שמואל שם?
- שמואל שם ושם-משפחה.
- שמואל שורץ ושושנה שמואל.
- מאין אתה דוד?
- אני מהונגריה.
- אתה בהונגריה?

## Schoenberg Memorial Chapels

In the hallowed tradition of our faith....

a dignified setting with reverence for customs and observances in strict accord with family wishes.

**519 Philadelphia Pike  
762-0334**

## Classified

Classified ads are available at 75¢ per line (at least two lines, please). Send your ad, with check, to Classified Ads, The Jewish Voice, 101 Garden of Eden Rd., Wilmington, DE. 19803. (302) 478-6200

**SINGLES - SHALOM ADVENTURE** - The successful modern day Jewish Matchmakers Dating Service - Join our adventure, Box 2132, Wheaton, Md. 20902.

**MOTHER'S HELPER/BABYSITTER.** Experienced. Call Betsy 475-2118.

**PROFESSIONAL BARMAID** for hire for private parties & catered affairs. 478-9156, Evelyn.

**DESIGNER.** Ambitious women; f/p time; will train. 654-3774.

**SUNDAY SCHOOL TEACHERS** wanted. Exp. only. Please call (215) 696-7210 or (215) 692-9957.

## 12 and 15 Passenger Vans

*With or Without Drivers*

On any group trip we can lower expenses & increase comfort.

For Information and Reservations Call  
**David Rosenblatt**

## DOLLAR RENT-A-CAR, 655-7117

## Competitive Lease Rates

*Specializing in Datsun/Nissan*

**CONTACT:**  
**STEVE SISMAN**  
**(215) 459-9300**



## Hadassah To View The Precious Legacy

The Wilmington Chapter of Hadassah is planning a trip to New York on Monday, July 23 to the Jewish Museum. This is their Education Day program. They will view the exhibit, "Czechoslovakia: The Precious Legacy."

The bus will depart from the JCC at 8 a.m. and will leave New York for the return trip at 6 p.m. The tour of the exhibit begins at 11:30 a.m. A light snack will be served on the way to New York. The cost is \$18; it includes transportation, admission to the exhibit, and the refreshments.

To make your reservation for this very worthwhile exhibit, send your check to Judy Stiebel, 6 Devon Court, Devon, Wilmington, Del. 19810. (Lunch is on your own.)

## AEA Family Get-Acquainted Picnic

The Albert Einstein Academy is having a covered dish get-together on Sunday, Aug. 5, at 4 p.m. at the school, 101 Garden of Eden Road, Wilmington, Delaware.

This is your chance to meet our family and find out more about our school.

If you plan to come, please contact Avrene Hall, (215) 696-7717 or Sandy Dunner, 655-3501 by July 31.

## Organizations in the News

### Beth Shalom School News

#### REGISTRATION

Plans are now underway for the 1984-85 school year. Registrations are being taken in the school office for the kindergarten-primary department which is a one-day-a-week program, for 5, 6 and 7-year-olds (kindergarten, first and second graders.)

Children who are 8 years old and/or going into the third grade in the fall of 1984 should register for the aleph class of the elementary department, which means three days a week.

All pupils presently enrolled in the primary department will automatically be registered in their succeeding grade level.

For further information about registration for any of the above classes, feel free to call Arlene Davis, educational director, at the synagogue, 654-4462.

#### CONFIRMATION SERVICES

Confirmation services were held on Wednesday, June 6, 1984 at Congregation Beth Shalom.

1984 Confirmands were: Samantha Burman, daughter of Roberta and Henry Burman; Elyse Renee Cherrin, daughter of Joann and Alan

Cherrin; Tammy Fine, daughter of Gloria and Paul Fine; \*Andrea Michele Jacobs, daughter of Barbara and Robert Jacobs; Janna Dayan Kane, daughter of Cynthia and Richard Kane; Jaimie Faith Laurence, daughter of Maris and Michael Laurence; Karen Milbauer, daughter of Nancy and Alan Milbauer; Karen Denise Mudrick, daughter of Barbara Levin and Paul Mudrick; Edina E. Riebman, daughter of Celina and Ronald Riebman; Michael David Sachs, son of Harriet and Marvin Sachs; Erik Michael Sherr, son of Bonnie Sherr and Herbert Sherr; \*Hillary Ann Strilko, daughter of Rhea and Peter Strilko; and \*Becky Waxman, daughter of Charlotte and Milton Waxman. \*Gratz Hebrew High School Students.

### Division For The Visually Impaired Needs Volunteers

The Division for the Visually Impaired is in need of individuals to volunteer their office skills in a busy office. The job specifics are: one day a week, four or five hours. If you are interested in volunteering, contact Sandra Sharkey at 571-6234. Thank You!

## Because We Care

Regardless of the weather, a committee of members of Sisterhood Congregation Beth Emeth, who are devoted to community service, will assemble in the kitchen of the Congregation on July 16 and 17, to prepare three lunches for 150 persons at each lunch, in the month of September, at the Emmanuel Dining Room in Wilmington, Delaware. Well-balanced meals, using U.S. Government Surplus food are planned, prepared, cooked and served. Congregation Beth Emeth Sisterhood has provided this service, as one of the community groups preparing free meals for Wilmington residents. Barbara Snyder will supervise this project.

### Dessert Specialist

Chocolate Truffle Cake  
Lindy's Cheesecake  
Carrot Cake  
Amaretto Cheesecake  
Grasshopper Pie  
Sugar-free Desserts  
Plus Many More

(Kosher)

Call for complete cake list after 6 p.m.

453-8973

Delivery in Newark or Wilmington



**Suede & Leather  
Repairs & Alterations**  
Fairfax Shopping Center  
Route 202 (Concord Pike)  
652-6725

**Support  
Our  
Advertisers**

## GIFT OUTLET 50% Plus Off Retail

- Desk Accessories - travel diaries, address books, memo pads, photo albums, recipe files, & much more.
- Mini-frames - lots of styles & colors.
- Lucite napkin holders
- Cork coasters & trivets in numerous designs.
- And many more items - some available in large quantities.

By appointment - 475-7709

Devara Goodman, 2637 Majestic Dr.  
Brandywood

(Available for bazaars & fairs, too.)

Clip & Save, Clip & Save, Clip & Save, Clip & Save

## GREECE

with Mediterranean Cruise

SEPTEMBER 7 - 21, 1984

\$1,899. per person/dbl. occup.

Thirteen nights and fourteen days to explore the wonders of ancient and modern Greece. Athens...the Acropolis, Cape Sounion, the temple of Poseidon, a Greek taverna. The land tour to sites of Classical Greece...Mycenae, Nauplion, the oracle at Delphi. The cruise to the white-washed isles of the blue Aegean...Myconos, Rhodes, Ephesus, Patmos, Crete and the Minoan palace at Knossos. Luxury hotels. Breakfast daily. Lunch or dinner on land tour. Three meals daily on cruise.

Arrangements by

**CHARLIE B. TRAVELS, INC.**  
A FULL SERVICE TRAVEL AGENCY

For further information and brochure, call:

Ruth Balick  
368-9151

### Jewish Women's Bowling League

Bowling is a great way to spend a Tuesday morning. Spaces are available in the new Jewish Women's Bowling League formed by B'nai B'rith and Hadassah.

The league will roll off at Holiday Lanes starting Sept. 7. Call Judy Seltzer, 478-4885 or Irene Millius, 368-7433 for information.

## TOUR GUIDES NEEDED

The Delaware Art Museum needs volunteers to give tours to adults and children. The training program runs from September 18 to May 21, Tuesdays from 9:30 - 12:00 noon. Previous experience is not required. For further information, please call the Museum's Education Department at 571-9594.

Place Your Confidence In The Ring Leaders

## A RING LEADER SPECIAL

LADIES' 14K YELLOW  
GOLD DIAMOND  
NAME BRACELET

Regular Price \$1325.00

Sale Price

**\$800.00**

(OFFER GOOD TIL 7-20-84)

14K GOLD  
"BAR CHAIN"

16" \$49.98

18" \$54.98

20" \$59.98

24" \$69.98

7" Bracelet \$21.98

9" Anklet \$30.00



SEE OUR  
LARGE SELECTION  
OF ANTIQUE AND  
ESTATE JEWELRY  
AT DISCOUNT  
PRICES.

**Branmar Plaza**  
MARSH AND SILVERSIDE RD.  
OPEN MON.-FRI. 10-9; SAT. 10-8  
475-3101

**Our Newest Location**  
824 Market Street On The Mall  
OPEN M-Sat. 9-5:30 • 655-6253

**4377 Kirkwood Plaza**  
OPEN MONDAY-SAT. 10-9:30  
999-9901

Come in and view our magnificent collection of estate and antique jewelry.

When you're in town...



428-1497

Two locations:  
903 Orange St.  
824 Market Street Mall

10% off with  
this ad on

Any Coffee



## Yadin: Archeologist Soldier, Politician —

(Continued from Page 1)

Sea Scrolls. He was named professor of archeology at Brandeis University in 1959, gaining the same position at Hebrew University four years later. In 1964 he was elected to the French Academy of Sciences, the first Israeli thus honored.

Over the years, he turned down a number of suggestions by Ben-Gurion himself, as well as by other leaders, to enter politics and to assume a senior post in the Cabinet. Yadin apparently felt somehow, as he stated himself much later, that he was not of the ilk which enables people to survive in the rough world of politics.

When he finally gave in to the temptation, based on his great and lasting popularity, and set up his own party in 1976 - the Democratic Movement for Change, his foray into political life brought about his greatest disappointment. Contesting the elections in 1977, primarily in protest to the long rule of the Labour Party, Yadin's new political movement at first achieved tremendous success. It received 15 seats in the Knesset, causing the Labour Alignment to suffer most painful defeat, down to 32 Knesset Members.

But Yadin's original intention to become Labour's senior and decisive coalition partner which would considerably weaken the bargaining power and pressures of the religious parties failed. Instead, the DMC's surprise victory brought Menachem Begin and his Likud party to power, the first time in the 29 years of the State.

Prof. Yadin's party was soon outmaneuvered by Begin who was quick to form a coalition with the two religious parties. When the DMC joined the government three months later, Yadin became deputy prime minister, regarding social betterment as one of his major tasks.

But with this move began also the slow disintegration of the newly born party. The Shinui - Change - wing of Prof. Amnon Rubinstein split away, refusing to remain in a nationalist-religious coalition government.

With President Sadat's surprise historic visit to Jerusalem, Yadin felt fully justified having joined the

government and was pleased that he could take an active part in the peace process. He and his party's cabinet colleagues often tried to moderate Mr. Begin's more extreme positions and attempted, albeit with limited success, to slow down the establishing of new settlements in the West Bank.

Yadin believed that princi-

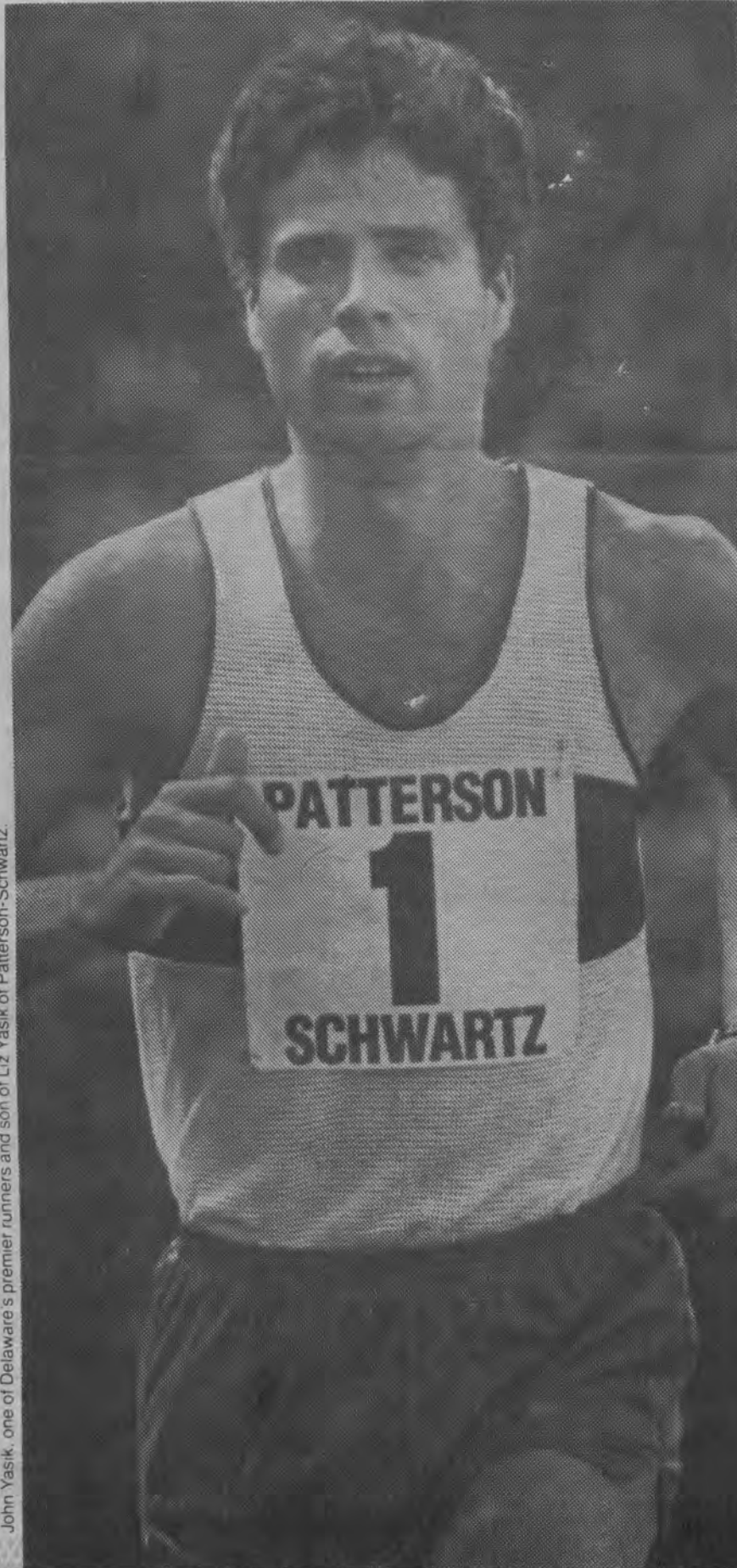
ple commanded that he stay on in Begin's first cabinet until the bitter end, long after the late foreign minister Moshe Dayan and former defense minister Ezer Weizman had resigned in protest against the prime minister's policy. One of his most difficult periods came when close friends and colleagues from the university demonstrated in front of his home, urging him to resign.

His exit from political life

after the 1981 elections, which he no longer contested, brought him relief and the return once more to his beloved archeology. But he remained active to his last day in the struggle for principles, such as the fight against religious coercion.

Yadin's achievements could have filled several lives. He remained an outstanding national figure whose memory is engraved in many corners of the land.

## When you know the facts, you'll know why Patterson-Schwartz is #1.



John Yasik, one of Delaware's premier runners and son of Liz Yasik of Patterson-Schwartz.

When it comes to helping you buy or sell real estate, nobody does it better than Patterson-Schwartz Realtors. We're the area's #1 Best Seller, and we base that claim on these 10 simple facts:

**Fact #1.** We listed and sold more real estate last year than at any time in our history. Nearly \$300 million worth. And our gross sales through May of this year were more than \$150 million.

**Fact #2.** We have a full-time professional staff of 207 to serve you. Our sales people have an average of 10 years of experience and 83 professional real-estate designations.

**Fact #3.** We had 105 Million-Dollar People last year. And we made up nearly half of the membership of the New Castle County Board of Realtors Million Dollar Club.

**Fact #4.** Our full-service Relocation Center sets the standard. It's the only one in Delaware nationally accredited by Relocation Resources, Inc.

**Fact #5.** We have our own mortgage company to help you with home financing. We can "pre-qualify" you for a mortgage even before you look for a home.

**Fact #6.** Our Builders Marketing Division offers new-home choices at 24 developments. In all styles and sizes, from \$40,000 to \$400,000.

**Fact #7.** We know how to market real estate. We're the News Journal's biggest real-estate advertiser, in addition to using radio, magazines, billboards, and more.

**Fact #8.** We have every real-estate service you could need. At 10 convenient locations. Beside homes and home mortgages, we offer commercial and industrial sales and leasing, property management, investments, appraisals, office leasing, business brokerage, land-and-farm sales, insurance and the Triad Home Protection Plan.

**Fact #9.** We're home grown and home owned. Our founders started in real estate back in the '40s. And they're still going strong.

**Fact #10.** In a recent University of Delaware survey, more people said they would call Patterson-Schwartz than any other Realtor!

Remember these 10 facts. And the next time you need a Realtor with professional, experienced and courteous service, call Patterson-Schwartz.

Because there's only one #1.



**Patterson  
Schwartz**

#1 Best Seller

### Metropolitan

HOTEL / MOTEL  
ASBURY PARK, NEW JERSEY

Weinblatt Family - Owner / Management



The METROPOLITAN is an ideal place for Groups and Organizations

CALL US FREE NATIONWIDE ON

TOLL FREE LINE (800) 526-2307

FROM NEW JERSEY: (201) 775-1000

Write: P.O. Box 799, Asbury Park NJ 07712