

The JEWISH VOICE

PUBLISHED BY THE JEWISH FEDERATION OF DELAWARE 101 Garden of Eden Rd., Wilmington, Delaware 19803

"You heard it in
The Jewish Voice"

Mr. & Mrs. Albert Z Goldberg
3315 Heather Court
Wilmington, DE 19809

Vol. 21, No. 8

18 Teveth 5748

January 8, 1988

16 Pages

Federation Shabbat Demonstrates Unity In Action

In a demonstration of Jewish community unity, all synagogues in Delaware will participate in Federation Shabbat on Friday, Jan. 22, 1988 at 8 p.m. In New Castle County services will be at Temple Beth El, 301 Possum Park Road, Newark; in Lower Delaware at Congregation Beth Shalom, Queen & Clara Streets, Dover. Speaker for the New Castle County synagogues will be Dr. Arieh L. Plotkin; speaker at the Dover service will be Ms. Francia Isakoff.

Bus Transportation To Be Provided

For the convenience of residents of Northern New Castle County, the Jewish Federation is sponsoring buses which will depart at 7:15 p.m. from the parking lots of Congregation Beth Emeth (Lea Boulevard) and the Jewish Community Center (Garden of Eden Road) and return after the Oneg Shabbat. "Since there will be no other Friday night service in Northern Delaware, we want to make it easy for all those who usually attend to still do so," says Stephen E. Herrmann, Jewish Federation of Delaware President. For those preferring to drive, directions to Temple Beth El follow this article. For bus reservations, please call the

Jewish Federation of Delaware at 478-6200. There is no charge for bus transportation.

Dr. Arieh L. Plotkin, a Haganah veteran and citizen of Israel, was formerly an officer in the Intelligence Corps of Israel's Defense Forces. He was educated at the universities of Jerusalem and London and did his graduate work at Princeton University, where he was the first Israeli to be admitted to the prestigious Woodrow Wilson School of Public and International Affairs. He received both M.A. and Ph.D. degrees at Princeton, where he also taught in the Department of Politics.

Dr. Plotkin has travelled extensively in the U.S. and Canada. He has appeared on TV and radio, on lecture tours for the University of Wisconsin and the University of Minnesota and has taught advanced courses, such as an Honors Seminar on Modern Israel at the City University of New York.

Ms. Francia Isakoff, an attorney with I.C.I., is a Board member of the Jewish Federation of Delaware, past president of the Women's Division, and a current member of the Region I UJA Women's Division Cabinet. She has recently returned from a family mission this summer to Israel.

**Directions to Temple Beth El
From Northern New Castle County**
I-95 South to "Newark-Dover" Exit (this will be Exit



Fran Isakoff



Arieh Plotkin

#3, RT. 273). Follow RT. 273 North (this is also Ogletown Road). Continue on 273 North until the 4th traffic light and make a right. At the 2nd traffic light (Texaco Station on right - cemetery far left corner), make a left onto Kirkwood Highway. Continue on Kirkwood Highway until 2nd traffic light. Turn right onto Route 72 North (Possum Park Road). Stay on 72 North for 1.4 miles. Turn left into Temple Beth El.

Community Calendar

Sunday, January 17, 7:00
**Martin Luther King
Commemorative Program**

☆☆☆☆

Friday, January 22, 8:00
Federation Shabbat at Temple Beth El

☆☆☆☆

Sunday, January 24
SUPER SUNDAY

☆☆☆☆

Sunday, February 7, 7:30
Lecture:
Religious Revival In America

☆☆☆☆

Sunday, February 28
**Community Celebration
of
Israel's 40th Anniversary**

☆☆☆☆

Tuesday, May 3

Jerusalem Symphony Concert
In celebration of Israel's
40th Anniversary.
Details to follow.

On Super Sunday: Answer The Call

Super Sunday '88 is around the corner for the entire Jewish community - it's just two weeks away. Super Sunday, throughout the country, is the official opening event of the United Jewish Appeal/Jewish Federation Campaign. Throughout every Jewish community in the United States, from New York to Little Rock, Arkansas, thousands of volunteers will be calling upon their Jewish neighbors to meet the needs of their local Jewish community as well as their larger Jewish community throughout the world. In Delaware, Super Sunday '88 will enlist more than 100 volunteers making

calls to over 2000 Jewish families in our local Jewish community from lower Delaware to Pennsylvania. This year's Super Sunday chairpeople, Laney Gordon, Emrich Greschler, Barbara Togman and Len Togman, are looking forward to Delaware's most successful Super Sunday ever.

When you receive a call from one of your neighbors from the Super Sunday '88 headquarters of Patterson-Schwartz on Jan. 24, 1988, PLEASE ANSWER THE CALL. Jews from Delaware, Israel and throughout the world are depending on you.

Gaza Update

Israel Invokes Firm Measures To Maintain Law And Order

JERUSALEM - Israel has taken tough measures to maintain order and security in the administered territories and made it clear it would not be deterred by criticism from abroad or concerns about its image.

The Israel Defense Force and border police began a massive dragnet aimed at arresting activists and their ringleaders held responsible for the worst wave of violence to sweep the territories in 20 years.

Scores of alleged troublemakers are in custody and rioting in the West Bank and Gaza Strip has ended. For the first time in several weeks, shops were opened, roads were clear to traffic and tens of thousands of Arab workers from the territories showed up for their jobs in Israel. But underlying the calm was tension, and Israelis were stunned by two events.

The weekend of Dec. 19-20 saw an outbreak of unprecedented violence and vandalism in East Jerusalem as bad as any in the territories, although no lives were lost. At least four police officers were injured and some 60 Arabs detained. Rioters occupied and blockaded the main thoroughfares and attacked

and vandalized shops and Israeli banks.

By Dec. 20, order had been restored and heavily armed IDF troops and border police patrolled rain-soaked streets littered with debris and shattered glass. "We have had commercial strikes and demonstrations here before," Jerusalem Mayor Teddy Kollek noted, "but nothing like this."

Israelis had hardly recovered from the shock of riots in their own capital when Israel's Arab citizens called a general strike in solidarity with Arabs in the administered territories.

The strike was virtually 100 percent effective. It shut down Arab shops, businesses, manufacturing plants, schools, municipalities and all public services. It spread to East Jerusalem, whose Arab residents are not Israeli citizens, to villages near the capital that have long been peaceful, to Bedouins in the Negev and to Druze on the Golan Heights, who are not Moslems and had never before acted in solidarity with the Palestinians.

(Continued to Page 14)

OPINION

Editorial:

Jews Must Help Jews

During the next few weeks, we will all be asked, if we haven't already been approached, to contribute to the 1988 Federation campaign. It's important that we respond generously for one simple reason, Jews must help Jews. The survival of the Jewish people depends on our concern.

Since the earliest days, we have been a disputatious people. The books of Exodus, Numbers, and Deuteronomy are full of references to Moses' trouble with a complaining, rebelling, questioning people. Today, we continue to debate everything from the fate of the Gaza strip to the concept of who is a Jew. But none of these ideological questions must interfere with our concern for fellow Jews. At the beginning of time, in the book of Genesis, the story of Cain and Abel teaches us "I am my brother's keeper." This basic principle continues through all Jewish teachings. We must put aside our differences when it comes to *tzedakah*, to helping our fellow Jews.

The word *tzedakah* means righteousness or justice. *Tzedakah* is doing the just or right thing for Jews who need our help. It is something

which the needy have a right to receive and the donor has an obligation to give. *Tzedakah* is a legal claim, which must be honored by the more fortunate. It is not a matter of philanthropy but an act of justice.

So you don't like the way every campaign dollar is spent. You object to some of Israel's actions. Perhaps you question the motives of the person soliciting you. It's easy to be negative. It comes quite naturally to most of us. With no trouble at all, you could find dozens of reasons not to contribute. But there are thousands of reasons to contribute, thousands of people who are hungry, in danger, and in need of our assistance. Real people, our fellow Jews, will benefit from campaign dollars. Their survival and well being are the future of the Jewish people.

For four thousand years, the Jewish people has survived while other influential civilizations disappeared. In the face of persecution and attempts to our annihilation, the Jewish people has remained alive and strong. With our help, the Jewish people will continue to flourish. Jews must help Jews.

DEADLINE

The next issue of The Jewish Voice will be published FRIDAY, JANUARY 22. The deadline for stories and photos is noon, MONDAY, JANUARY 11. Material should be sent or brought to the Jewish Voice office at the Jewish Federation of Delaware, 101 Garden of Eden Rd., Wilmington, 19803. (302) 478-6200. All articles must be typed, double spaced.

THE JEWISH VOICE (USPS-704160)

Second class postage paid at Wilmington, De. Published semi-monthly, and monthly in July and August, by the Jewish Federation of Delaware, 101 Garden of Eden Rd., Wilmington, De., 19803. Subscription price \$7.50. Mailed to subscribers who are contributors to the Jewish Federation of Delaware. POSTMASTER: Send address changes to The Jewish Voice, 101 Garden of Eden Rd., Wilmington, De. 19803. (302) 478-6200.

The Jewish Voice

Published semimonthly, and monthly in July and August, by the Jewish Federation of Delaware.

Editorial opinions expressed in this newspaper are those of the newspaper and not those of any individual. Signed editorials do not necessarily represent the view of the newspaper but rather express the view of the writer.

Jewish Federation of Delaware, 101 Garden of Eden Road
Wilmington, De. 19803. (302) 478-6200.

Subscription Price: \$7.50

Circulation 3,200

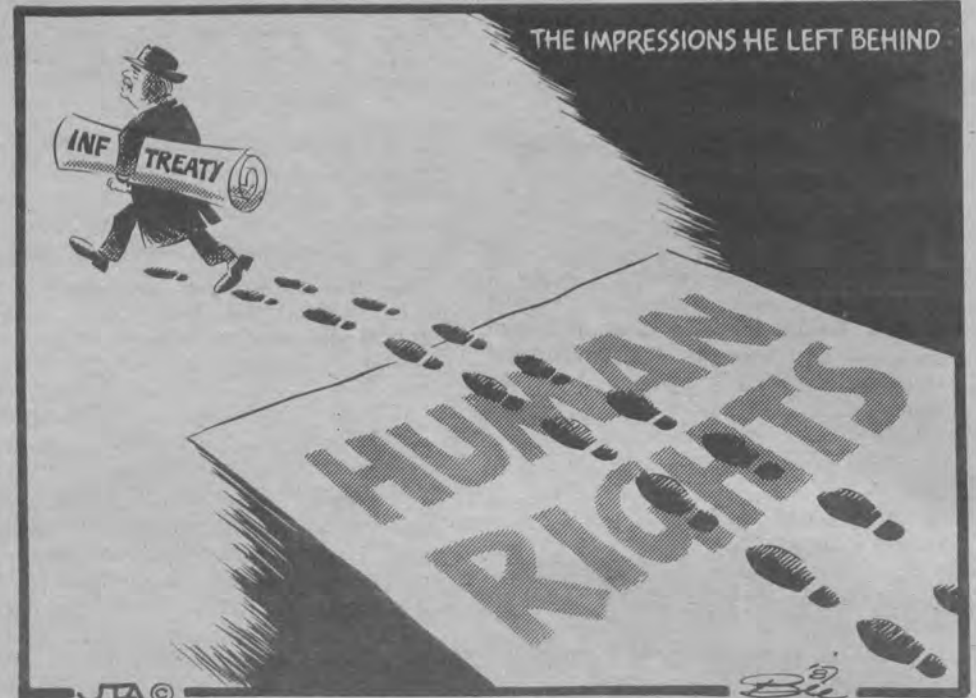
Mailed to subscribers who are contributors to
Jewish Federation of Delaware
Second Class Postage paid at Wilm., Del.

Toni Young, Chairman

Editorial Committee: Stanley W. Balick, Cecell Ehrich, Rita Katz Farrell, Nisson Finkelstein, William P. Frank, Edwin Gollin, Marga Hirsch, Mike Lazarus, Toni Young.

Mark Edward Gawel, Advertising Manager
Robert N. Kerbel, Executive Vice President

No material will be accepted by The Jewish Voice which is considered against the best interests of the Jewish community.



U.S.-Israel Relationship Strengthened

The first session of the 100th Congress set a benchmark in legislative activity strengthening the U.S.-Israel relationship. In addition to again fully funding \$3 billion in all-grant aid to Israel

for fiscal 1988 — \$1.8 billion in military assistance, \$1.2 billion in economic support — the bipartisan Congress included several dozen pro-Israel provisions in the continuing resolution wrapped up just before adjournment.

Broadly speaking, the measures fall into three categories: economic aid, strategic cooperation, and political/diplomatic support.

An outstanding example of the first was approval of landmark legislation to provide debt restructuring for friends and allies saddled with unusually high-interest U.S. military loans. Debt restructuring—an idea some in Congress labored on for three years—could save Israel up to \$150 million annually in interest payments. The Treasury Department still must write the implementing regulations, but Capitol Hill has made its position clear.

Congress repeatedly has advised the Reagan Administration to evaluate "off-the-shelf" military equipment of U.S. allies before spending large sums on research and development (R&D). Because Israel has been forced to maintain a sophisticated defense establishment, because its armaments have been proven by the tragic imperative of war, it has much to offer America, and this fact has led to increased strategic cooperation.

For example, Congress approved funding for Defense Department testing and evaluation, for purposes of procurement, of Israel's Popeye air-to-ground missile. If the highly-rated Popeye passes U.S. tests and is fully procured, the result could be a multi-year acquisition worth a great deal to Israel while providing a significant R&D savings for the United States for a system available now.

Politically, Congress expanded America's commitment to walk out of—and halt funding for—the U.N. or any subsidiary agency if Israel is expelled; asserted that the Soviet Union should not participate in an international conference on the Middle East until it reestablishes relations with Israel and

(Continued to Page 13)

Letters to the Editor

Dear Mr. Kerbel,

Thank you for sending your most timely letter to *The Jewish Voice* (Dec. 25). The points you mention should clarify Mr. Bill Frank's misconceptions about public celebrations of one religion in our constitutional democracy.

I am especially glad you brought up the points of confusion raised in the minds of children when their public schools choose to purposely impose one single religion to display and/or trivialize via decorations, prayer songs, musical performances, etc. during December only. You point out (in praise) that in 1986 the Red Clay School District passed a policy on Religious Neutrality in the Schools. I guess they are to be congratulated for

what you later call the "spirit" of the holidays. However, as you wrote, "spirit alone does not resolve our problems. Action does." Red Clay District schools' actions this year (as always) were to violate their own policy.

This letter is not intended to singly point out Red Clay School District's Christian-oriented celebrations. The other public school districts in Delaware have never bothered to even pretend to be religiously neutral (through policy or action), but I am not quite sure whether Judaism believes in praising those who violate their own policies or praising those who never set up any to violate.

As a Delaware public school teacher for thirteen years, I can hardly wait for the annual dose of St. Valentine and St. Patrick's Day decorations and our day off for "Good Friday," while Jewish students lose "perfect attendance bonus points" if they choose to observe any *Yom Tov* days throughout the school year.

Joel F. Glazier

To the editor:

I want to thank the Jewish community for welcoming me with open arms when I first moved to Delaware six and a half years ago. I became a member of the center and became active with the singles group. I worked at the day camp in the summer of 1982, and made some good friends.

I am leaving Delaware to get a master's degree in counseling at Gallaudet University in Washington D.C. Leaving Delaware was difficult, but I felt very rich because of the warm friendship I made, and good about the things I had accomplished. I thank you for your friendship, and warm welcome.

Eric K. Reisman

On the other hand



N. Even Or

The Palestinians: Question Without Answer, Problem Without Solution

The problem of the Palestinian Arabs in Gaza and the West Bank has been defined for us graphically in newsphoto and video footage. It is crowded and filthy refugee camps, angry people with no jobs and no hope, frustrated teenagers armed with only stones against Israeli soldiers firing live ammunition and tear gas. It is uniformed kicks and clubs against helpless civilians.

This is the graphic description of the problem, but, as so often is the case, it is neither complete nor accurate, because of what it doesn't show and what it doesn't say.

The very name, Palestinian, is politically charged. There are, and long have been, both Palestinian Jews and Palestinian Arabs, Palestine being the name given by the Romans to that region approximating ancient Israel under Kings David and Solomon. As for claims to the land based on prior residency, that too is a difficult one for the Arabs to win under any impartial reading of history.

What is true, is that the refugee status of the Arabs in the Gaza Strip and West Bank originated in the 1948 War of Independence, the war that began when the Arabs would not accept the U.N. partition plan and set out to annihilate the poorly armed Jewish population.

When a truce was negotiated (there is still no peace except with Egypt), the refugee count was about 550,000 Arabs who fled from Israel, and about 850,000 Jews who fled from the Arab countries.

The Jewish refugee problem was quickly solved by Jews, with over 600,000 absorbed in Israel, and the remainder in the rest of the world. The Arab refugee problem, as we so well know, was never solved. It was encapsulated and allowed to fester so that it could be used in the unending *Jihad* against Israel: if the Jews couldn't be destroyed militarily, they would be destroyed politically. There was virtually no absorption of Arab refugees in Arab countries.

A point not often noted, by the way, is the estimated \$11 billion worth of property abandoned by Jews when they fled their homes in Arab lands. Keep it in mind when you next hear reference to the \$2 billion in Arab property abandoned in Israel.

When all the arguments and perspectives have been noted, however, the problem remains. Although more accurately attributable to the Arab nations, both in origin and continuation, the problem is its impact, an Israeli problem. And it grows.

For those who propose that Israel just

get out of Gaza and the West Bank, just pick up and go, there is the ominous security question of who will take over when they are gone, whose guns will be a rifle shot from the Knesset and the Western Wall, whose artillery zeroed in on Tel Aviv.

And for those who propose annexation of these areas there is the threatening demographic trend, one that appears to forecast an Arab majority in the total population of Israel sometime in the next 50 years or so, because of the higher Arab birthrate.

And then there is the Meir Kahane proposal: annexation followed by pressure on the Arabs to leave. Could a Jewish state maintain Jewish plurality this way without losing its ethical Jewish identity?

But the problem of the Palestinian Arabs of Gaza and the West Bank is made infinitely more difficult, perhaps unsolvable, by their own attitudes toward possible solutions.

For many years now, Israel has made various proposals to move refugees out of the camps in Gaza into better housing in the general vicinity. They have always been rejected. It is understandable that the refugees may fear reprisals from the PLO and its supporters if they accept such improved liv-

ing conditions, but it is also becoming increasingly clear that it is not just fear that holds them back.

In interview after interview, including those with writers favorable to their cause, those living in the camps have insisted that they will not leave until they are "free" to return to "their land" and until "the Jews are gone." And what if this is not going to come about? They will wait, even if it takes generations. They will not accept partial solutions. It is all or nothing.

Such individual attitudes should not surprise us, I guess, since they are consistent with what has been the official position of the PLO and, for that matter, "moderates" like the Saudis. They seek not just the West Bank and Gaza, not just East Jerusalem, but Tel Aviv and Haifa as well, with the Jews removed or living as *Dhimmi*, subservient second-class citizens.

If, at root, it is truly all or nothing, can there be a solution? Whatever their political leanings, I don't believe that the Jews of Israel are ready to pack up and leave the country to the Arabs. If the Palestinian Arabs and their Arab brothers keep insisting on all or nothing, and convince Israel that they really mean it, more and more people will begin looking at the Kahane solution in a different light.

UN Should Ask Real Questions

Late last November the United Nations staged its annual irrelevancy on the "Question of Palestine." This "debate" required three days of General Assembly time and the participation of dozens of countries, most

of whose representatives unreel anti-Israel cliches.

During this year's rhetorical ritual, the PLO's Farouk Kaddoumi — a top associate of Chairman Yasir Arafat — recalled the century of "violence, terrorism and murder" faced by "the people of Palestine." He dwelt on the "material and moral support" the British gave to "illegal" Jewish immigration and the Jews' subsequent oppression of the Arabs. The Jewish state, Kaddoumi asserted, brought to the apparently otherwise peaceful Middle East "wars, religious and racial... violence."

To accomplish this, Israel managed to "align itself with all the forces of evil in the world." As it celebrates its 40th anniversary, Israel should realize it pushed the Palestinian Arabs "into a Holocaust not less than (the one) the Jews experienced."

The Jordanian representative insisted that early Zionist leaders recognized that "the presence of Jews in the region" would be "in total negation of the presence of Palestinians." Thereafter, Israel's policy always was that of aggression, systematic terror, and colonial expansion rather than concession and coexistence. It still denies the inalienable rights of the Palestinian people; instead, "the campaign for the Judaization of Palestine goes on... Israel has no desire for peace... One must not be deceived by Israeli declarations..."

The Kuwaiti delegate outdid most of his Arab and Islamic colleagues: He, too, noted the 70th anniversary of the

"sinister" Balfour Declaration — in which England looked with favor on the establishment of a Jewish homeland in Palestine — and thundered that it was granted "by one who did not possess to those who did not deserve..."

As if he could not believe it himself, the Kuwait informed the General Assembly that "basically, the creed of Zionism holds that the land of Palestine belongs to the Jewish people." But, citing the 20th anniversary of "the Zionist entity's occupation of the rest of Palestine," he offered hope: This year is also "the 800th anniversary of the

liberation of Jerusalem from the European crusaders."

What, if anything, does the yearly vituperation mean?

Some U.N. observers point to tacit Jordanian-Israeli cooperation, to Arab states restoring diplomatic ties with Egypt despite the latter's peace with Israel, to the diminished status of Arafat and the PLO. Even at the U.N., anti-Israel behavior has begun to recede. In this view, the annual "Question of Palestine" grotesquery is becoming the last showcase for posturing-a-cost-free

(Continued to Page 13)

Endowment Fund

Charitable Options for Retirement Planning

Tax deductions for contributions made to IRA accounts are no longer available to those couples filing jointly with combined salaries of \$50,000 (\$35,000 for singles) who participate in an employer-sponsored retirement plan. Also, deductible limits are down from \$30,000 to \$7,000 for 401(k) plans and \$9,500 for tax-sheltered annuity plans.

So how do retirement-conscious taxpayers ensure the security of their later years? You may wish to consider creating a CHARITABLE REMAINDER UNITRUST. Such an arrangement will allow you to make annual contributions to the trust and receive an income tax charitable deduction for each contribution.

There are other charitable plans that can produce added income for you. If you wish more information please call the Endowment Director at the Federation Office, 478-6200, or consult your tax advisor.

Inside this issue ...

- Israel Granted Status As Nato Ally Page 4
- Tribute To Martin Luther King Page 5
- Palestinians On Trial Page 7
- Will Jewish Teens Become Jewish Adults? Page 10

Candle Lighting

January 8th- 4:38 PM 22nd- 4:53 PM
 15th- 4:45 PM 29th- 5:01 PM

alfred carlis

Fine Children's Wear
DOWNTOWN WILMINGTON

111 W. 9th St.

656-7069



**YOU ALWAYS
HAVE A
WINNING
HAND HERE!**

THE SMOKE SHOP

WHOLESALE - RETAIL - MAIL ORDER
DELAWARE AVE. & DUPONT ST.
WILMINGTON, DELAWARE 19806

(302) 655-2861
(215) 358-1324



Beehive

THE '60's MUSICAL
... Sealed with a Kiss!

**"BURSTS WITH
VOCAL TALENT &
ZANY HUMOR..."**

ONE OF THE LIVELIEST
ENTERTAINMENTS IN TOWN."

—Stephen Holden, N.Y. Times



**Friday, January 22
thru
Sunday, January 24**

A non-subscription
selection.

**Fri Eve at 8 PM; Sat at 2 PM & 8 PM;
Sun Mat at 3 PM**

Orch/Mezz
\$30

Balc
\$20



Make checks payable to THE PLAYHOUSE THEATRE. Please
enclose a stamped, self-addressed envelope for return of tickets;
otherwise held at Box Office. Visa, MC, Am Ex & WSFS accepted.
Special rates available for Subscribers, Groups, Seniors & Students.

PHONE ORDERS NOW (302) 656-4401

Teletron (800) 233-4050

Refuseniks Invited To Reapply

By SUSAN BIRNBAUM
NEW YORK (JTA) — Soviet
emigration officials told an
unspecified number of Moscow
Jewish refuseniks to reapply to
emigrate even though their
relatives have refused to sign
waivers of financial obligation.

But it was unclear whether
the waiver, known by
refuseniks as the "poor
relatives" clause, was officially
rescinded.

New York City Councilman
Noach Dear said it was. He in-
formed the Jewish Telegraphic
Agency that a spokesperson in
the office of Konstantin Khar-
chev, chairman of the Soviet
Council of Religious Affairs, told
him by telephone from Moscow
that the requirement of a finan-
cial waiver from relatives was
being abandoned.

He said the spokesperson
related that the emigration of-
fice was calling refuseniks and
telling them to reapply for
visas. Dear estimated that up to
500 people could be affected.

The waiver, clause 24 of the
codified rules for emigration
published in January, has been
an integral part of the process
of obtaining emigration visas,
and its absence has prevented
many refuseniks from receiving
exit visas.

Relatives who do not wish
their relatives to emigrate fre-
quently refuse to sign the
waiver even if financial obliga-
tions are not at issue.

However, a long-time
Moscow refusenik told the
Long Island Committee for
Soviet Jewry that only
members of a seminar group

founded by Alia Zonis had
been notified they may reapp-
ly, and that refuseniks were
largely considering it a "delay
tactic" at the time of the U.S.-
Soviet summit meetings.

But Dear said refusenik
Vladimir (Zeev) Dashevsky of
Moscow, who is not part of
Zonis' group, said he received
a phone call from the Moscow
emigration office telling him to
reapply for a visa. Dashevsky
added that some of his friends
had also received similar calls,
and that the news had been an-
nounced in the media.

By telephone, he told his
daughter, Irina Dashevsky
Kara-Ivanov, a former
refusenik living in Israel since
May that he would reapply. But
she said she was not sure he or
other refuseniks would actually
receive visas.

"I hope this is a good sign,"
she said, "but I will believe it
only when I see my father in
Israel... We would like to
believe that there are positive
changes in the Soviet Union
and that there is real glasnost
and democracy."

Nominee Questioned Closely

The Senate Foreign Rela-
tions Committee recently ques-
tioned April Glaspie, the
nominee for U.S. Ambassador
to Iraq, on a variety of Middle
East issues including the PLO
and the recent Arab League
summit. The Committee is
scheduled to vote on her con-
firmation soon.

Sen. JESSE HELMS (R-N.C.)
asked Glaspie whether she
thought the PLO was a terrorist
organization and for her views
on closing the PLO offices in
the United States.

The nominee contended that
the PLO is an organization
which contains "constituents
that are most definitely ter-
rorists" but also contains in-
dividuals and groups such as
an Anglican bishop and the
Red Crescent who are not ter-
rorists. Helms quipped, "I am
sure that Al Capone's crowd
had one or two who went to
church on Sunday."

Glaspie also does not believe

the PLO is a force for modera-
tion or the sole legitimate
representative of the Palesti-
nians. She called Achille Lauro
hijack mastermind Abu Abbas
— a PLO executive committee
member — "perhaps the most
vicious terrorist the world has
seen" and stated the PLO will
not "earn respect" in the world
or "the right to sit down" to
negotiate until it "rids itself" of
such terrorists.

Sen. MITCH McCONNELL
(R-Ky.) asked Glaspie if "she
agreed with many commen-
tators that Iran has replaced
Israel as the number one
enemy" of the Arab world. She
responded that Iran, not Israel,
is the "preoccupation in the
Arab world, but added that
"the core problem is still
there..." Apparently referring
to the Palestinian Arab issue,
she added: "If we don't deal
with it we may fail to gain
stability in that region in our
lifetime."

Israel Granted Status Of NATO Ally

By DAVID FRIEDMAN
WASHINGTON (JTA) —
Israeli Defense Minister Yit-
zhak Rabin and Defense
Secretary Frank Carlucci, signed
a memorandum of
understanding that boosts
Israel's status to the equivalent
of a NATO ally of the United
States.

The agreement, signed at the
Pentagon at the beginning of
Rabin's three-day visit here,
provides for the United States
and Israel to carry out joint
military research and develop-
ment programs. It also allows
Israel to bid on military sales to
the Pentagon on the same
basis as NATO members.

Israel joins a select group of
five major non-NATO allies of
the United States that also
comprises Australia, Egypt,
Japan and South Korea.

The memorandum takes on
new importance in the wake of
Israel's agreement, under
pressure from the United
States, to cancel development
of the Levi jet fighter. The new
pact is expected to help save
many of the Israel Aircraft In-
dustry jobs lost by the cancella-
tion.

Pentagon sources noted that

the memorandum is the latest
in a series of cooperation
agreements with Israel since
the 1970s, including the four-
year-old memorandum on
strategic cooperation.

After the signing, Rabin and
Carlucci held a meeting that in-
cluded a working lunch. Rabin
also had separate meetings
with the civilian secretaries of
the military branches, as well
as with Gen. Colin Powell,
President Reagan's national

security adviser; Deputy
Secretary of State John
Whitehead; and former
Defense Secretary Caspar
Weinberger.

Rabin also has scheduled a
series of meetings with in-
dividual members of Congress
and with officials of General
Dynamics Corp., manufacturer
of the F-16 jet fighter, which
Israel agreed to substitute for
the Lavi.

Super Sunday In Dover

The Lower Delaware Coordinating Committee of the
Jewish Federation of Delaware is joining in the Super
Sunday Telethon on Sunday, January 24, from 10 to 2,
from the offices of B. Gary Scott Realtors in Dover. The
telethon location is courtesy of Dolores Knopf, Vice-
President of B. Gary Scott.

The following volunteers have already signed up to
staff the phones:

Charles Salkin
Helen Gelof
Bob Crystal
Irv Levitt
Howard Winston



Dale Shuirman
George Scott
Mindy Berman
Julie Tollin

Anyone wishing to join in this exciting and worthwhile
event, please call Kim at Beth Sholom at 734-5578.

Jewish And Black Newspapers Begin Inter-Ethnic Dialogue

By WILLIAM SAPHIRE

MIAMI (JTA) — A black and a Jewish newspaper here have launched an experimental year-long inter-ethnic dialogue in print that may be unique in the United States.

Last month, the two weeklies began sharing publishers' columns, opinion pieces and news items. The columns will appear quarterly, and based on the circulation of both newspapers, will reach more than a quarter million readers, Jewish and black.

David Abramowitz and Jack Levine, publishers and founders last year of The Miami Jewish Tribune, agree with the premise stated by Garth Reeves Sr., publisher of the 64-year-old Miami Times, that "Nothing breeds distrust more than ignorance."

The three publishers acknowledge that the black and Jewish communities have drifted apart since the civil rights movement in the 1960s, and say they hope to restore

the amity and cooperation. They believe this can be done if each community becomes aware of the concerns, sensitivities and issues that engage the other.

Abramowitz stressed that the exchanges are "no holds barred." That was evident in the first exchange of columns that appeared in the Tribune's Nov. 13-19 edition.

Reeves complained vehemently of Jewish attacks on Louis Farrakhan, leader of the Nation of Islam, whose anti-Semitic remarks have been a source of anger and concern in the Jewish community; and on the Rev. Jesse Jackson, who when running for the Democratic presidential nomination in 1984, made his "Hymietown" reference.

In the adjoining column, Abramowitz and Levine suggested that "the apparent acceptance by many blacks of Farrakhan's anti-Semitic fulminations" may have been one cause of the black-Jewish rift.

In future editions, the Tribune's publishers said they would tackle such sensitive issues as anti-Semitism in the black community, quotas and the lack of strong support of Israel among blacks, Abramowitz told the JTA.

The dialogue has attracted considerable attention in south Florida. The Miami Herald, the major daily newspaper, ran an editorial and a long news story on the unique joint venture, which was inserted into the Congressional Record by Rep. William Lehman (D-Fla.).

Arthur Teitelbaum, southern area director of the Anti-Defamation League of B'nai B'rith, conceived the exchange idea and introduced Abramowitz and Levine to Reeves.

The Tribune reaches some 40,000 households in Dade and Broward counties, with special editions reaching 60,000 households. The Times reaches about 30,000 households in the black community.

Israel Wins Pentagon Contracts

Damage to Israel's high-technology defense industry done by cancellation of the Lavi fighter plane project may be on the mend. The U.S. government has awarded a multi-million dollar contract to an Israeli firm and the two governments reached agreement on cost-sharing for the research and development of an anti-tactical ballistic missile system (ATBM).

During Israeli Defense Minister Yitzhak Rabin's recent trip to Washington, U.S. defense officials offered him a proposal under which Washington would bear 80% of the research and development costs of the ATBM. The remaining 20% would be paid by

the Israeli government, Israel Aircraft Industries or with U.S. aid funds to Israel. Although Israel has previously rejected other cost-sharing formulas, it is expected that this proposal, which could be worth as much as \$120 million, will win Cabinet approval.

Meanwhile, Congressional budget conferees approved \$8 million to continue testing Israel's Popeye missile, a highly accurate, air-to-surface cruise missile. If the tests are successful, the Pentagon may purchase Popeye's for use on Strategic Air Command B-52's.

In a separate announcement, U.S. Defense Department officials awarded a \$180 million

contract to an Israeli firm to produce night-target systems for Israeli and U.S. helicopter gunships.

These developments should help to offset the cost in jobs and funding to Israeli firms who participated in the Lavi project. Israel Aircraft Industries, the Lavi's chief contractor, is laying off approximately 3,000 of its 20,000 employees following the project's termination. In addition, the Pentagon estimates that the Israeli government will pay some \$400 million in cancellation costs.

Prior to the Lavi's demise, the Reagan Administration pledged to support current levels of funding for military aid to Israel, \$1.8 billion, over the next two years. The Administration also has agreed to allow Israel to use \$400 million in U.S. aid in Israel. U.S. defense firms doing business with Jerusalem will continue to spend \$150 million in Israel. Further, Washington has promised to help Israel win a fair price for 75 F-16 aircraft intended to replace the Lavi.

Jewish Community Tribute To Martin Luther King

To demonstrate the community's commitment to Martin Luther King, Jr.'s Dream, there will be a Jewish Tribute to Martin Luther King, Jr. at the Israel Community Center, 101 Garden of Eden Road, Wilmington, on Sunday, Jan. 17 at 7 p.m.

The program will include introductory remarks about the life of Dr. King by Judith Drexler. It will feature an analysis of the Biblical roots of gospel music by Professor Irving H. Cohen of West Chester University to be followed by a performance of gospel music by the Now Gospel Art coalition Singers, Inc., directed by the Reverend Thomas H. Brown, Sr.

The Reverend Thomas H. Brown, Sr. is Musical Director and Instructor in vocal music at Christiana Cultural Arts Center. A native Wilmingtonian, Rev. Brown has appeared in a series of Broadway plays and is a writer-arranger and recording artist who founded the Now Gospel Coalition, Inc. He also travelled, lived and performed in Israel in the 1960's.

Dr. Cohen is Professor of Music History at West Chester University and serves as Vice Chairman of the National Jewish Music Council. He served on the graduate faculty of the Manhattan School of Music and the Cantorial Training Institute, Yeshiva University. He has published articles and reviews on Jewish music.

The program is being jointly sponsored by the Jewish Community Relations Committee of the Jewish Federation, the Jewish Community Center, the Living Judaism and Social Action Committees of Congregation Beth Emeth and the National Council of Jewish Women.

The program is free and open to the public at no charge. Please call the Jewish Community Center, 478-5660, to make reservations.



Jewish Singles — 21 to 31
 Make calls on Super Sunday
 January 24 at 4:30 p.m.
 at the
 Jewish Federation of Delaware
 101 Garden of Eden Road, Wilmington
 Light Supper Provided
 Call Carol at 478-6200 to reserve a phone!

ADVERTISERS:

Our annual Bridal Guide is February 5, 1988. Don't be left out of this exciting issue.

The advertising deadline for the JANUARY 22, 1988 EDITION is MONDAY, JANUARY 18, 1988.

The 1988 Advertising Rate and Publication Schedule is being mailed.

For further information contact the Advertising Department at (302) 478-6200.

5% SR. CITIZEN DISCOUNT
 EVERY TUESDAY ONLY
 SEE COURTESY DESK FOR DETAILS

Your Check Is Welcome

INDEPENDENTLY OWNED SUPERMARKETS

Tri-State Mall
 1-95 & NAAMANS RD.
 CLAYMONT, DEL. 19703
 STORE HOURS: Sunday 8AM-6PM
 Mon.-Sat. 8AM-9PM
 Friday until 10PM

Graylyn Crest Center
 1718 MARSH ROAD
 WILMINGTON, DEL. 19803
 STORE HOURS: Sunday 8AM-6PM
 Mon.-Sat. 8AM-9PM

Penn Mart Center
 DU PONT BLVD. & BASIN ROAD
 NEW CASTLE, DEL.
 STORE HOURS: Sunday 8AM-6PM
 Mon.-Sat. 8AM-10PM

Faulkland Road
 CHESTNUT RUN CENTER
 1710 FAULKLAND RD.,
 WILMINGTON, DEL. 19808
 STORE HOURS: Sunday 8AM-6PM
 Mon.-Sat. 8AM-9PM

Film Printing & Developing

SEE STORES DETAILS!

Kodak Film		2 Prints of Every Picture!		Single Prints!	
AT LOWEST SUPERMARKET PRICES					
110-12 EXP.	\$2.19	12 EXPOSURES	\$2.53	12 EXPOSURES	\$1.69
110-24 EXP.	\$2.79	15 EXPOSURE DISC	\$3.14	15 EXPOSURE DISC	\$2.09
Disc Film - 15 Exp	\$2.59	24 EXPOSURES	\$4.67	24 EXPOSURES	\$2.99
Disc Film - 30 Exp	\$4.89	36 EXPOSURES	\$7.31	36 EXPOSURES	\$4.79
126-12 EXP.	\$2.39				
126-24 EXP.	\$2.99				
CP 135-C24 EXP.	\$2.89				
CM/135 C24	\$3.59				

Guaranteed Color Print Film Developing

C110, 135 DISC, C-41 PROCESS
 OTHER SERVICES AVAILABLE
 ASK FOR INFORMATION

SAVE YOUR TAPES

Synagogues, Churches & organizations receive 1% of register tapes. See courtesy desk for details.

Jewish Community Center



Kidspace

Kidspace is a recreational childcare program for K-6th grade center Members which provides space to play, make new friends and explore new activities in an informal, yet structured, atmosphere. All programs occur on school holidays, when the Center is open. Additional childcare will be provided on all Kidspace days from 7:15 a.m. to start of the program and from the end of the program to 5:45 p.m. for a fee of \$4.75 daily.

1988 Kidspace Dates:

- Friday, January 15 - Public Schools
Time: 8:30 a.m.-4 p.m. (Childcare available)
Cost: \$13
- Monday, January 18 - Private, Public and AEA
Time: 8:30 a.m.-4 p.m. (Childcare available)
Cost: \$13

February 4, 5 & 8 -
Tatnall School
Time: 8:30 a.m.-4 p.m.
(Childcare available)
Cost: \$10

Watch for more information on up-coming Kidspace programs.

BBYO

The B'nai B'rith Youth Organization will hold its annual convention at the JCC on Friday through Sunday, January 8-10.

REMINDER:

Calligraphy Workshop
Thursday, January 14,
10-Noon

The Art of Theater
Monday, January 11,
8:00 a.m.
Syter's Restaurant

Insider's View
Delaware Art Museum
Sunday, January 10, 1 to 2:30.

Pre-registration is required for all of the above programs. Call the JCC at 478-5660.

Wellness Concept

You've heard the word, now hear the meaning by attending this informative lecture on "Wellness" presented by Julie Moyer, Ed.D., P.T.A.T.C. of Physical Therapy Professional Services, Inc. The lecture will be held on Tuesday, Jan. 26, at 7:45 p.m. Cost for the evening will be \$1 for members, \$3 for

non-members and free for Wellness members. Suggestions for a future health topic lecture series will also be discussed at this meeting. Pre-registration is required by Jan. 22. Please contact the Health and Fitness Department at 478-5660.

JCC Big 6'ers

Big 6'ers is a social group for boys and girls in the 6th grade. The primary purpose of this group is to develop and provide an opportunity for these youngsters to form and maintain new friendships and to develop positive social attitudes in an informal, yet structured, environment.

Big 6'ers are invited to come and enjoy a pizza dinner, swimming, games, tournaments movies

and a bagel breakfast with their friends.

Each 6'er must bring a sleeping bag and pillow, as well as any favorite games. The overnight Party will begin at 6:30 p.m. on Jan. 23 and end at 10:30 a.m. on Jan. 24. The cost is \$12 for members and \$17 for non-members. The registration deadline for this program is Jan. 15.

Soccer Clinic

Bill Green will hold an indoor soccer clinic for children ages 7-12. Features will include: Individualized soccer skill development, trapping, passing, heading, dribbling and kicking; small-sided games and goalkeeper training. All players must have indoor soccer shoes or sneakers, and white and dark T-shirts and trunks. To

register, or for additional information, please contact the Health and Fitness Department.

The clinic will run for eight sessions beginning on Jan. 10. The cost is \$20 for members. There are 3 levels planned: Ages 7 & 8 from 1-2 p.m., ages 9 & 10 from 2 to 3 p.m., and ages 11 & 12 from 3 to 4 p.m.

Religious Revival In America To Be Discussed

A world-wide resurgence of religion is taking place, and the United States is no exception. In all denominations there are evangelists and charismatics, ministers are speaking out on public issues. Large segments of the population are evidently being moved by religious ideas on a scale not seen for a long time in this country. What are we to make of this and how should one respond?

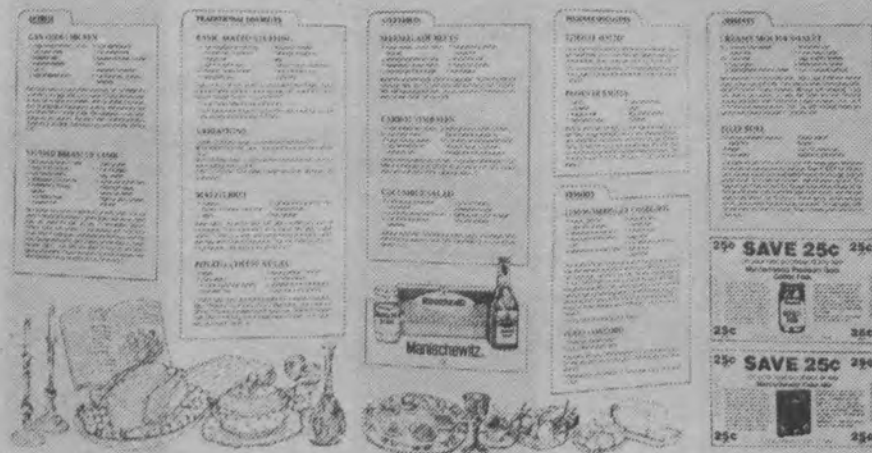
On Sunday, February 7, at 7:30 p.m. at the Jewish Community Center, Professor Lawrence Duggan, Assistant Professor of History at the

University of Delaware who is currently spending a year at Princeton University, will speak on this challenging subject. A discussion involving the audience will follow.

Professor Duggan was educated at the College of Holy Cross and received a Ph.D. at Harvard University. He is the author of *Bishop and Chapter* and numerous articles and book reviews, and is involved in several research projects.

The program is made possible by a grant from the Delaware Humanities Forum, a State program of the National Endowment for the Humanities. It is being co-sponsored by the Jewish Community Relations Committee of the Jewish Federation and the Jewish Community Center. It is free and open to the public. Please call the Center, 478-5660, to make your reservation.

FREE! Manischewitz® 1988 PASSOVER RECIPE GUIDE.



And Receive 50¢ in Coupons

Our new 1988 Passover Recipe Guide is more beautiful than ever! And we at Manischewitz hope it will make your holiday celebration more beautiful than ever, too. Our Guide features two menu suggestions plus special recipes for dishes like Easy Chopped Herring, Gan Eden Chicken and Pears Concord. You'll also find a 25¢ coupon for any size Manischewitz Premium Gold Gefilte Fish and a 25¢ coupon for any Manischewitz Cake Mix. Send for yours now and have a very happy and Kosher Passover!

COUPONS EXPIRE APRIL 7, 1988

Mail coupon to: RECIPE GUIDE, P.O. BOX 484A, JERSEY CITY, N.J. 07303-0484. Please send the 1988 Manischewitz Passover Recipe Guide to:

Name _____

Address _____

City _____ State _____ Zip _____

One Recipe Guide Per Request. Request will not be processed without zip code. PLEASE PRINT CLEARLY Offer good while supply lasts.



Bicentennial Commemorative

Order these one ounce .999 silver Delaware bicentennial coins today! Only 10,000 are being minted to celebrate 200 years of statehood. Each coin is numbered on the rim and comes with a certificate of authenticity. Perfect for collectors and a great gift for \$29.75. TO ORDER by calling toll free 1-800-235-6646 Ext. 910, or by sending a check for \$32.75 which includes postage and handling. Mastercard and Visa also accepted.

Bicentennial Coins
2070 Naamans Rd.
Suite 140, Wilmington, DE 19810



Suede & Leather Repairs & Alterations
Fairfax Shopping Center
Rt. 202 (Concord Pike)
652-6725

U.S. Officials Are Satisfied With Palestinians' Trials In Israel

By HUGH ORGEL

TEL AVIV, (JTA) — The United States is satisfied so far with the way Israel is conducting the trials of Palestinians arrested for rioting and incitement in the administered territories, an American diplomat indicated late last week.

Morris Draper, the U.S. consul general in East Jerusalem, said American officials observing the trials report that they are being carried out with full regard to the "due process of law." Draper was interviewed on the Israel Defense Force educational television program.

An Arabic-speaking official from the U.S. Consulate in East Jerusalem and a Hebrew-speaking envoy from the U.S. Consulate in Tel Aviv attended the trials in Nablus military court, where 48 suspects were charged with various security offenses. The officials said they planned to visit other courts in the territories where trials are under way and would report their observations to their superiors. But a group of prominent West Bank lawyers announced they would boycott the trials because the proceedings are "humiliating and illegal."

Nevertheless, three Arab lawyers showed up at the Nablus court to represent nine of 18 defendants whose hearings had already begun.

Lawyers in the Gaza Strip, however, are continuing their boycott begun last week and most defendants there are without legal counsel.

Haaretz reported last week that the imposition of harsh penalties on youths who pleaded guilty to charges of violence in the Gaza Strip has aroused anger and hatred among local residents. According to *Haaretz* correspondent Eitan Rabin, four youngsters aged 15 to 18 confessed they prepared gasoline bombs and threw them at Israeli military vehicles. The military judge, Lt. Col. Yosef Liav, sentenced them to between two and two-and-a-half years in prison. The defendants were shocked by the severity of the sentences and refused to rise from their seats, the correspondent reported.

Meanwhile, a 7-year-old Palestinian youth died Dec. 30 at Soroka hospital in Beer-sheba of bullet wounds he suffered in a clash with an IDF patrol at the Jebalya refugee camp the previous week. Two soldiers and 10 camp residents

were injured in the melee.

Haaretz noted that the measures being taken by Israel in the aftermath of three weeks of violence in the administered territories are not new. The newspaper recalled that the Cabinet voted in August 1985 to reinstate deportations and administrative arrests in the West Bank and Gaza Strip to create "environmental motiva-

tion" against terrorism. The decision ended a five-year period during which no residents of the territories were deported.

During the six months that followed the Cabinet decision, 21 former security offenders, released in a 1985 prisoner exchange, were expelled to Jordan. Most of the deportees in recent years have not been

convicted of terrorists acts, but of incitement, contact with terrorist organizations or "political subversion," *Haaretz* said.

Palestinians suspected of subversive acts were deported, while those accused of less serious offenses were usually placed under administrative detention or "house arrest," the paper said.

Commonwealth Conference In Barbados Synagogue

Sabbath eve services were held for the first time in more than 100 years in the synagogue of Congregation Nidhei Israel in Bridgetown, Barbados, the World Jewish Congress reported. They marked the opening of the four-day biennial conference of the Commonwealth Jewish Council and the reconsecration of what is possibly the oldest Jewish house of worship in the Western hemisphere.

Rabbi Israel Singer, secretary general of the World

Jewish Congress, officiated at the rededication and Prime Minister Erskine Sandiford of Barbados was the honored guest.

The Commonwealth Jewish Council represents Jewish communities in 24 countries of the British Commonwealth. Its president, Greville Janner, a Labor member of the British Parliament, formally opened a special exhibition on the history of "Jewish settlement in the Caribbean" at the Barbados Museum, under the auspices of the Barbadian government.

There are about 27 Jewish families in this island nation of a quarter million. Jews arrived here shortly after the first British settlement in 1627. Congregation Nidhei Israel was founded in 1654. The synagogue was partly destroyed by a hurricane in 1831. It is now undergoing restoration, expected to be completed late next year.

The 110 delegates and observers at the conference included representatives from Jewish communities in such Third World countries as India and Zambia. Resolutions adopted at the gathering, which ended Tuesday, include a strong condemnation of apartheid and a call to bring to justice Nazi war criminals still at large and living in Commonwealth countries.

PLO In Cairo

A PLO delegation met with Egypt's Prime Minister, Foreign Minister and a top adviser to President Hosni Mubarak. Egypt, which closed PLO offices throughout the country after being criticized by the organization in April, recently permitted some to reopen.

At a Cairo rally "in solidarity with the Palestinian people," opposition Socialist Labor Party leader Ibrahim Shukri thanked "those Egyptian organizations, officials and unions that have burned the Israeli flag and raised the Palestinian banner." Israeli Knesset member Mohammed Miari, of the Progressive List for Peace, participated in the ceremony opening the PLO offices in Cairo.

Rate-watchers' alert.

Compare these Statement Savings Account rates:

First Federal 6.50% 6.70%

Rate Yield

WSFS 5.50%

Bank of Delaware 5.25%

Delaware Trust 5.00%

Mellon 5.00%

Wilmington Trust 5.00%

How does First Federal do it? For one thing, we're not a big bank. Big banks have big expenses—they don't want to pay people high interest because that would mean less to cover their costs. Big banks aren't dummies. But neither is First Federal. We'd rather be small than be unable to serve a few alert customers.



Rates subject to change without notice.

Main Office:
One Customs House Square

Branch Offices:
One Customs House Square • 201 West Ninth Street • New Castle • Fairfax • Newark • Branmar Plaza • Christiana Mall • Brewster Drive • Mill Creek • Talleyville Center



Jewish Family Service of Delaware



Jewish Family Service is a constituent agency of the Jewish Federation of Delaware and a member agency of the United Way of Delaware.

The Year In Review

At the end of each year, we are required to compile several statistical reports for our various funding and accrediting bodies, as well as for our own use for future planning.

However, for the general public I feel it is more important to know "what we do," than "how much" we do. Our services in 1987 reached about 2,000 different people, of which about 1,600 were Jewish. So much for numbers.

Our basic programs are "Family Counseling" and "Services to the Aged and Their Families." In Family Counseling, we still see the usual problems related to marital relationships, separation, divorce, and remarriage. We helped people to learn how to live together more harmoniously, as well as how to adjust to begin single again. We helped parents to deal with their children more effectively, whether there were two parents or one. We also helped people to adjust to sharing the responsibility of raising their children, even through they were no longer married to each other.

Two relatively new conditions that can have a devastating effect on families, received our increased attention this year. The first is AIDS, which we have prepared our staff to deal with, even though we have not yet worked directly with an actual case. The second is Homelessness, with which we have worked directly and undoubtedly will again. In

both of these situations we can provide direct counseling as well as informing clients about, and facilitating referrals to, appropriate needed services.

The fastest growing agency service is helping the elderly and their families. We worked directly with many elderly people around problems ranging from housing, to helath, to finances, to relationships with their families. We helped with specific problems, as well as ongoing support in dealing with the general changes and losses that accompany advanced aging.

We helped the children of the aged, who often are senior citizens themselves, when they carried responsibility for parents who could no longer care for themselves. We helped to arrange for help in the home, or a change in living arrangements when necessary. We also helped families to work through the sorrow, frustration, and anger that such situations can often generate.

Our Jewish Family Life Education programs reached

audiences from Jewish schoolchildren dealing with inter-dating, to the members of the Jewish Community Center Senior Center discussing a different topic every week. We

sponsored "Parlor Meetings" devoted to dealing with your adolescents, as well as your aging parents. We reached inter-married couples in Newark; (Continued to Page 9)



By Arnold Liberman, Executive Director

Dear Rachel,

My husband and I have some very different ideas about raising our son, who is six. As an only child, I worry about him being spoiled. I work very hard and to be sure that he can get along with other kids and handle himself in difficult situations (he takes Karate lessons, as well as soccer and horn). He gives his outgrown toys to charity every year. Of course, he has his chores to do. I guess you could call me a strict parent.

My husband literally spoils him with love. He worries so much about his eating that he will cook a special meal, or give him candy, if my son doesn't like what I made for dinner. He'll let him stay up till 11:00 p.m. on a school night, and they'll watch T.V. with their arms around each other.

With these mixed messages, I wonder if my son will ever grow up to be a mensch. Do you have any advice for us on how to raise a mensch?

Mean Mama or Mensch?

Dear Mama,

My best advice on how to raise a mensch? Be one. All the rest is commentary. Go and study.

The prescribed course of study: you and your husband need to come up with specific goals for your son's education in menschlichkeit. Do you want him to be able to get along with others? Then model the problem-solving process for him. Discuss; debate; disagree; agree; reach a consensus. Do you want him to feel loved and be loving? Figure out ways for the three of you to share affection by modeling inclusive love. And never forget that raising a mensch is a commitment to a long-term course of study.

Rachel

Send letters to "Rachel, c/o Jewish Family Service, 101 Garden of Eden Rd., Wilmington, DE 19803." Names and details will be altered in published letters to protect your privacy.

LITVAKS AND GALITZIANERS

At The Kutz Home, there are people from all walks of life living together in a truly warm, social atmosphere.

We believe in respect for the independence of our residents with supervised nursing care available if needed.

For a Jewish environment where the traditions are observed, join your landmen.

Call us for more information.



THE MILTON & HATTIE KUTZ HOME, INC.

704 River Road • Wilmington, Delaware • (302) 764-7000

Support Our Advertisers

CHRISTINA HOUSE



KILLER AGAIN, SAM ... Mystery Weekend

The Romantic 40's set the stage for murder!

Our Casablanca theme mystery weekend will be a killer ...

Live your Miss Marple and Sherlock Holmes fantasies ...

Be outrageous or sleuthfully sedate and solve the crime!

January 30-31
Complete Weekend Package
2 days/1 night

\$310 per couple/double occupancy

RESERVATIONS LIMITED
656-9300

707 King Street, Wilm., DE 19801

DOR L' DOR GENERATION TO GENERATION

THE 1988 FEDERATION CAMPAIGN STORY

Dear Friends,
The 1988 Annual Campaign of the Jewish Federation has its theme
"Dor L'Dor - Generation to Generation."
The Jewish Community of Delaware should feel very proud of its
accomplishments of the past generation in developing and construct-

- ing:
1. Five synagogues and temples
 2. The Jewish Community Center
 3. B'nai B'rith House
 4. The Milton & Hattie Kutz Home
 5. The Harry Cohen Wing of the Jewish Community Center
- All of which have been of great value in fostering strong Jewish value.

We were instrumental in the funding and establishment of the Hillel Foundation at the University of Delaware, Albert Einstein Academy, Gratz Hebrew High School and Jewish Education Programs for exceptional children. And soon we can all enjoy our newest accomplishment. The Jewish Family Campus with programs and facilities for all ages to enjoy.

In this past generation, we witnessed the reestablishment of an independent Jewish state - Israel. Forty years ago there were 800,000 Jews there, and now 3 1/2 million have found a haven of freedom. A generation that participated, fought and won four wars to maintain their freedom - a generation that participated in Entebbe, Operation Moses and the emigration of 150,000 Soviet Jews - demonstrating to the world that the "freedom of captives" is an obligation. We have helped deprived Jews in poor neighborhoods of Israel through Project Renewal. And now we must provide for the next generation. We must guarantee our continuity and strength by action: 10,000 - 20,000 Jews in Ethiopia facing starvation. And now we must provide for the next generation. We must guarantee our continuity and strength by action: 400,000 Jews in the Soviet Union who

1. There are still Jews in Morocco, Rumania, and Poland who count long for freedom.
2. There are still more than 400,000 Jews in the Soviet Union who count on us for assistance.
3. There are still Jews in Morocco, Rumania, and Poland who count on us for assistance.

- 1. Our students will have the finest Jewish Education possible
- 2. Our teens and young adults will find pride in their Jewishness
- 3. There will be no hungry and poor amongst us
- 4. That our aged and ill will find comfort, support and dignity
- 5. Our troubled will be counselled

DOR L'DOR is not only being your brothers and sisters keeper but their partner in providing a more enriching and fulfilling life for all.

When you are called upon to make your 1988 contribution to the Federation please give generously - not until it hurts - but so that you will have pleasure in fulfilling your obligation for all generations, from the smallest child to our oldest citizens. All Jews are responsible - each for the other. We know we can depend upon you.



SUPER SUNDAY '88
SUNDAY JAN. 24, 1988


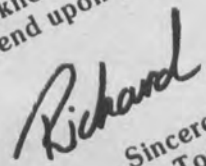
... when your phone line
becomes a lifeline



Richard A. Levine
'88 Campaign Co-Chairman



William Topkis
1988 Campaign Co-Chairman

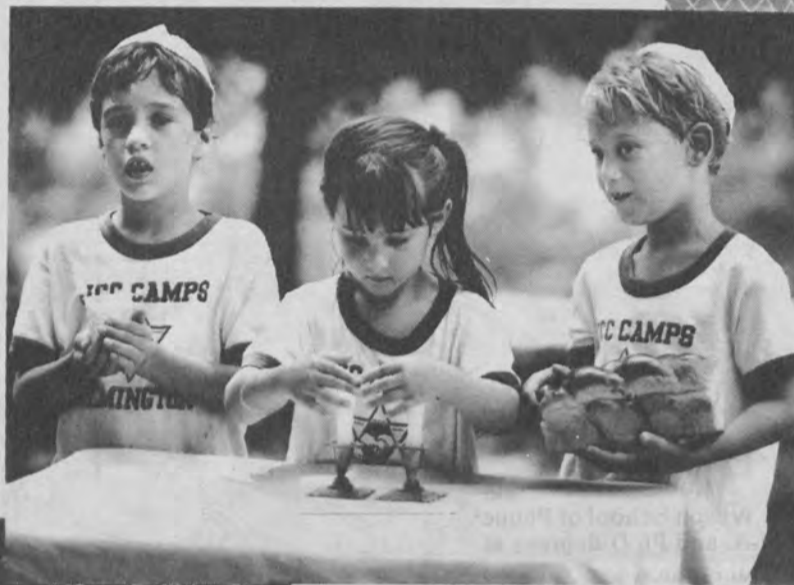
 
Sincerely,
William M. Topkis
Richard A. Levine
1988 Campaign Co-Chairmen

The Jewish Community Center & JCC Senior Center

The JCC is a busy place - an important place for every generation 52 weeks a year, 80 hours a week, the JCC puts the Jewish Federation of Delaware's campaign dollars to work — serving people and strengthening our community.

- In its infant day care programs for more than 165 families
- Its nutrition program that transports senior citizens to the center on a daily basis for a nutritious lunch and companionship
- Its programs for the handicapped that provide vital physical exercise opportunities in the JCC swimming pool
- Its after school day care programs that give children, whose parents work, a second home
- Its Jewish educational, holiday observance and festival programs that affirm our Jewish heritage and identity

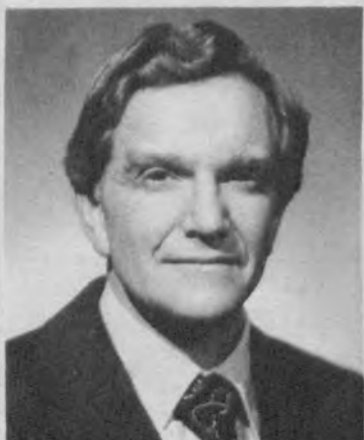
For these and the many more programs and services offered by the JCC, the Federation annual campaign is the lifeline of support. It does make the difference.



The Senior Center, at the JCC, is open Monday through Friday, with special activities scheduled on weekends throughout the year. Daily activities include physical fitness, discussion groups, various card games pool, blood pressure testing, yearly flue shots, a choral group, cultural and recreational trips, speakers, birthday parties and holiday celebrations.

The Senior Center also serves a nutritional and delicious lunch five days a week and offers transportation on a daily basis for members who request the service.

VICE CHAIRPEOPLE



Larry Isakoff
Professional Division



Richard A. Levine
Missions



Henry Topel
Major Gifts



Ruth Weinstein
Women's Division

Dr. Arieh Plotkin To Be Guest Speaker At Federation Shabbat, Friday, Jan. 22, 8 P.M.



Dr. Arieh Plotkin

Friday, Jan. 22, 8 p.m. — the Sabbath before Super Sunday — Temple Beth El will host the Federation Shabbat.

Dr. Arieh L. Plotkin, a Haganah veteran and citizen of Israel and a former officer in the Intelligence Corps of Israel's Defense Forces will be the guest speaker.

Dr. Plotkin was educated at the Universities of Jerusalem and London and did his graduate work at Princeton University, where he was the first Israeli to be admitted to the prestigious Woodrow Wilson School of Public and International Affairs. He received both his M.A. and Ph.D degrees at Princeton, where he also taught in the Department of Politics.

Dr. Plotkin has appeared on TV and radio, traveled extensively in the United States and Canada, and lectured for the University of Wisconsin and the University of Minnesota. In addition, Dr. Plotkin has recently taught an honors seminar on Modern Israel at the City University of New York.

For those of our community who would rather not or cannot drive, bus transportation to Temple Beth El will be provided free of charge. Busses will leave Temple Beth Emeth and the JCC at 7:15 p.m.

If you are planning to drive yourself please follow the directions below.

I-95 South to "Newark-Dover" Exit (this will be Exit #3). Follow Rt. 273 North (this is also Ogletown Road). Continue on 273 North until the 4th traffic light and make a right. At the 2nd traffic light (Texaco station on right - cemetery far left corner), make a left onto Kirkwood Highway. Continue on Kirkwood Highway until 2nd traffic light. Turn right onto Route 72 North (Possum Park Road). Stay on 72 North for 1.4 miles. Turn left into Temple Beth El.

FROM NEW YORK: NJ Turnpike South across Delaware Memorial Bridge to I-95. Follow above directions.

**Super Sunday '88
Sunday, January 24, 1988
When Your Phonenumber
Becomes A Lifeline**

Super Sunday — it's a day of involvement for every Jew in Delaware. Super Sunday '88 will take place on Sunday, January 18, at the main office of Patterson-Schwartz Realty, 913 Delaware Avenue, Wilmington. On that day close to 150 volunteers will contact more than 2,000 households to enlist their support for the Jewish Federation of Delaware's 1987 Campaign.

Co-chairing Super Sunday '88 are Laney Gordon, Emrich Greshler, Barbara Togman and Len Togman.

In addition to raising funds to improve the lives of thousands of Jews here, in Israel, and around the world, Super Sunday's concentrated effort helps raise community consciousness of Jewish needs and concerns.

Thousands of volunteers in Federations across the country will be joining together in this all-out telephone drive to reach more people and raise more money in a single day than ever before. More people will participate in Super Sunday than in any other event of the 1988 Jewish Federation Campaign.

Super Sunday - January 24, 1988 - Answer The Call - Don't Put This Call on Hold.



JANUARY 24, 1988

Super Sunday Chairpeople



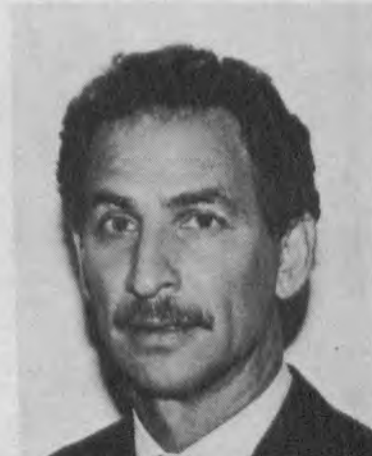
Laney Gordon



Imrich Greshler



Barbara Togman



Leonard Togman



The Jewish Family Campus

vide our mature community with their own special place to visit with friends, play cards and picnic, and from which they can enter the adjacent community activities.

- An **Outdoor Amphitheatre** that will greatly enhance our local cultural life with concerts, plays and other productions of community interest, as well as the larger events of our community organizations.

- A **Crafts and Nature Center** for enjoyable educational activities for young and old.

- A landscaped **Children's Park** that will give our children a safe, fun place designed to inspire their creative play, imagination and physical growth.

- Additional **Tennis Courts** for fun and competition or a pleasurable volley.

- **Ball Fields**, including facilities for baseball, soccer, football, as well as a lighted basketball court for those late evening Teen and Young Adult sport and splash parties.

- A **Jogging Track** with a Life exercise course to augment the Center's wellness program and help our community keep in shape.

- **Large Picnic Areas** with tables and cooking facilities for family and group gatherings.

On this historic day the next generation of programs, services, and facilities will begin. The Dedication of the Campus will be held on June 5, 1988.



The Jewish Family Campus will provide an added dimension to the services already available to the community. It will replace the current campsite, as well as become a community showplace with programs that will serve people of all ages year round.

The Campus is located on thirty acres of wooded land adjacent to the Jewish Community Center. This lovely setting will be enhanced by the surrounding 300 acres of dedicated parkland. The spacious grounds will comfortably accommodate group and organizational activities, as well as more intimate family groups or even a solitary stroll.

The campus' distinctive design is the work of Tetra-Tech Richardson, a well-known local firm that has been nationally recognized for their innovative design. Their experience includes having planned many of the State's Park and Recreation areas.

At the completion of construction in the spring the Campus will provide the following:

- A state-of-the-art **Aquatic Center** that can accommodate the recreational interests of young and old, as well as the varied swimming skill training needs of the community. The Aquatic Center will be fully accessible to the physically handicapped.

- A landscaped **Senior Park** that will pro-



DIVISION CHAIRPEOPLE



Judy Topkis
Women's Pacesetter



Leslie Goldenberg
Vanguard Division



Toby Weiner
Vanguard Division



DIVISION CHAIRPEOPLE



Betty Drznoff
Diamond Division



Deane Kattler
Diamond Division



Gloria Fine
Workers Training



The Milton & Hattie Kutz Home

Care for the elderly is one of the top Federation priorities for the 1980's. Local and national statistics confirm that the elderly are the fastest growing segment of the population, especially elderly over 85. Nearly 50% of our adults are either over 65 years old or are care givers of senior adults (children or other relatives).

Services provided by Jewish community agencies range from enriching the lives of

healthy, independent older adults to providing intensive, multiple assistance to the most severely frail:

• "Graying of the community" is increasing demand for

ing the past year. Admissions are processed more rapidly in order to assist those who need for care is pressing.

In addition to continuous, long-term care, the Kutz Home



Programs at Risk for Next Year

Over 60% of the Home's residents are unable to pay fully for their care and receive Medicaid. Unfortunately, Medicaid payments to the Home fall short by about \$10.00 a day or nearly \$3,700.00 a year for each resident assisted by this program. Furthermore, some needy residents do not qualify for Medicaid benefits and there is an even higher deficit in each of these cases. Therefore, without Federation dollars, the Home's services and ability to serve the neediest elderly would be at risk.



services from JFS, JCC and Kutz Home. This year JFS served 11% more clients in its Aged Services Department. No one is refused admission to the Milton and Hattie Kutz Home because of their inability to pay the full fee for the Home's care.

• There is a steady demand for the Home's services with over thirty new admissions dur-

also provides a day service for elderly who return to their own homes in the evening. If beds are available, the Home can provide short-term or respite care.

• While skilled nursing care is the major component of the Home's services, a rich program of social, recreational, educational and religious activities is offered residents.



Jewish Family Services

Throughout the year, this agency provides a wide range of therapeutic, educational and charitable services to all segments of our community.

Counseling a Jewish family about the imminent separation of the parents . . .

Assisting middle aged children and their elderly parents in planning "where mother or father will live" . . .

Visiting a Jewish patient at Delaware State Hospital . . .

Describing "Jewish Identity" to the members of the Leadership Development Program of the Jewish Federation of Delaware . . .

Distributing "Passover Baskets" to needy Jewish families . . .

Conducting assertiveness training for a group of senior citizens at the Jewish Community Center . . .

Accompanying 25 handicapped young adults on an all-day outing to Hershey, Pa. . . .

Providing an overnight motel room for a transient Jewish family passing through Wilmington . . .

These are just a few examples of services provided by JFS. Since previous funding sources are decreasing or depleted completely, JFS has become much more dependent on the Jewish community for financial support to maintain its services.

Jewish Community Relations Committee

The Jewish Community Relations Committee of the Jewish Federation of Delaware was formed for the following purposes:

1. To interpret Israel's position and needs to the American public.
2. To work on behalf of oppressed Jews in the Soviet Union, in Arab lands, and throughout the world.
3. To work to counteract anti-Semitism and insensitivity to Jewish concerns.
4. To work within our state and nation to assure that our Jewish community can participate fully in the general life of the community in order to foster creative survival of Jewish values and when all groups are accorded equal opportunity, equal rights and equal justice, the JCRC participates to the limit of its resources to promote the democratic system utilizing, whenever possible, resources both within and outside the Jewish community.

To accomplish these purposes JCRC maintains contact with our Congressional delegation and our local elected officials.

Under the leadership of Jack B. Blumenfeld, JCRC chairperson, the committee is involved in an ambitious program. The Israel Task Force chaired by David Margules is planning a joint program with the Jewish Community Center to mark Israel Independence Day, and programs to celebrate the 40th anniversary of Israel's Independence. The Church-State-Interfaith Task Force has distributed holiday calendars and guidelines to all Delaware schools and is continuing to work on adoption of religious neutrality policies by state schools.

Joan Spiegelman is chairing the Halina Wind Preston Holocaust Education Committee which is now a joint Jewish Community Center/Jewish Federation of Delaware committee under JCRC auspices.

Stanley W. Balick is continuing as chairperson of the Soviet Jewry Task Force which is engaged in raising community consciousness about the plight of Soviet Jews. Petitions have been signed, cards have been sent to refuseniks, and synagogue and youth groups have been involved in related activities.

The most recent JCRC event was the Soviet Jewry rally in Washington this past fall.



The Albert Einstein Academy

The Albert Einstein Academy is a high-quality Jewish Day School dedicated to providing an excellent secular as well as Judaic-Hebrew curriculum from kindergarten through elementary grades.

Staffed with state certified teachers dedicated to meeting the individual needs of every child, the school offers a wide variety of subjects. The general studies department includes mathematics, science, reading, language arts, social studies, and physical education. The Hebrew department teaches a love of Judaism through the study of Hebrew language, Bible, customs and tradition. Art, music, and drama are integrated throughout.

The children of Albert Einstein Academy come from a wide variety of backgrounds representing differing degrees of religious observance and involvement.



Gratz Hebrew High School

Delaware Gratz Hebrew High School has the largest enrollment in its history — 68 students. It is a branch of the prestigious Gratz College of Philadelphia. The goals and objectives are to provide a quality secondary educational experience for the young people of Delaware through a comprehensive five year program of Hebrew and Judaic studies.

Gratz provides students with a quality secondary Jewish education that helps teenagers develop into knowledgeable and committed members of the Jewish community.



Hillel At The University Of Delaware

• **Hillel at the University of Delaware** — With more than 1,200 Jewish students on the campus, Hillel has an active paid membership of over 300 undergraduate students. Shabbat dinners, services, social and cultural events are held weekly.

What we need and have not provided:

• The facilities at Hillel House are totally inadequate. There is no kitchen; the one meeting room cannot seat more than 30 people.

• There is a need for a full-time director. Presently, funds are available for only a part-time counselor.

• The offices at Hillel are in need of new office equipment.

The Judaic Workshop

• **The Judaic Workshop** — a little known program. The Judaic Workshop provides a Jewish educational experience to educationally exceptional young adults who have learning disabilities and who could not be served by congregational religious schools. Presently housed at Adas Kodesch Shel Emeth, a Jewish enrichment program is held every week for those who would not otherwise have any Jewish education.

Ki-Tov Classes

Ki Tov is a program for children who cannot be mainstreamed into regular afternoon class, but who also do not belong in the "Judaic Workshop for Exceptional Children." The children enrolled in this program are capable of learning about themselves as Jews and about Holidays, Bible and language, but must be taught in a small class setting using individualized instruction and attention. In the past, Jewish education for these children has been neglected. The program is financially supported by the Jewish Federation of Delaware, and the Milton & Hattie Kutz Home Foundation.

Building Our Jewish Future... By Supporting The People In Israel

Through our support of Israel we participate first-hand in the rebirth of the Jewish homeland — a miracle our forefathers died for, a miracle we are privileged to witness.

Today, Israel is faced with the most severe economic crisis in its entire existence. One-third of Israel's budget is spent for defense, and another third is used to repay debts and interest incurred in the establishment and development of the state. The government has cut spending in the only third of the budget with any leeway: social welfare programs which directly affect hundreds of thousands of needy Jews. At such a time, our role is more critical than ever.

By supporting the Jewish Federation Campaign through your gift to the 1987 Campaign, funds are allocated to the Jewish Agency in Israel to provide:

- Absorption centers, temporary

housing, medical care, food, clothing, vocational training for immigrants — more costly and complex than ever for the thousands of Ethiopian Jews who must make the transition from a medieval life to a modern, technological society.

- The growth of rural settlements essential if Israel is to improve its

economy and become self-sufficient. Large stretches of land need to be developed with high-tech communities in the northern Galilee and agricultural communities in the Negev and the Arava region.

- Youth Aliyah programs for 18,000 youngsters from economically or socially disadvantaged families.

Most participants live in a Youth Aliyah village or school while receiving educational and vocational training. These villages are home for thousands of Ethiopian youth who arrived in Israel without family.

Rehabilitation of disadvantaged neighborhoods through Project Renewal. The Jessie Cohen neighborhood (originally developed by the Wilmington family of the same name) of Holon, Israel is our Project Renewal responsibility. A new potential for a better life has been developed because of our partnership with the residents. Delinquency, crime, blight have been substantially reduced. New day care centers, senior citizen and youth clubs and projects have been developed. Education for the adults has begun — one new library and playgrounds have been completed, much of this by the citizens of Jessie Cohen, with our financial help.

Come, Celebrate Israel's 40th Anniversary

The Jewish Federation of Delaware in cooperation with the United Jewish Appeal has planned an exciting 1988 missions to Israel program.

Participants will have the opportunity to reach out and touch their heritage. Taking part in a UJA-Federation mission provides an exhilarating experience in Israel. In 1987 thirty-eight Delawareans joined in Missions.

The dates of the 1988 Missions are:

- March 13-23 — Delaware Outreach Mission
- March 13-23 — Mature Singles Mission
- April 17-27 — Yom Ha'atzmaut Outreach Mission
- June 19-27 — National Womens Division Chairmen & Directors
- June 26-July 6 — Summer Family Mission
- July 10-20 — Summer Family Mission
- July 17-27 — Summer Singles Mission
- July 17-August 12 — Summer Students Mission — Poland/Israel
- July 31-August 10 — Summer Singles Mission
- August 18-28 — Family Mission
- October 9-19 — Golden Jubilee Major Gifts, Womens Division
- November 6-16 — Fall Study Mission
- December 22-January 1 — Winter Family Mission
- December 25-January 4 — Winter Students Mission

You will touch:

...the Wall; archaeological artifacts; tomatoes in the Negev; the security fence along the northern border; the Holocaust memorial; a computer in a fourth grade classroom; soldiers defending their country; Hebrew textbooks for new immigrants in an absorption center; a cup of coffee in the home of an Israeli family very much like yours. And you will understand the significance of what you are touching.

During Israel's 40th Anniversary we want as many people as possible to go to Israel, particularly those of you who have never been on one?

This is an exciting historic time for Israel. The country is preparing to celebrate 40 years of independence. There is no better time to visit. There is no better way.

You will encounter an Israel that ordinary tourists do not. You will see Israel's breathtaking beauty, awesome achievements, and rich history.

Your UJA mission will include many of the following features:

- Home hospitality with an Israeli family;
- Conversations with new immigrants at an absorption center, with soldiers on the Golan Heights, with farmers in a pre-1967 border kibbutz, with teenagers in a Youth Aliyah village;
- A look at Israel's "good fence" along her border with Lebanon, and security "sweep" by soldiers at other borders;
- Tours of social service facilities where Israelis are helped by programs funded by your contribution to the Federation Campaign;
- A stay at a kibbutz;
- A tour of an Israeli Defense Forces installation;
- Briefings by leaders in government, industry, military, business, education, social policy;
- A visit to a Joint Distribution Committee (JDC) community center in a development town;
- A walk through your Project Renewal neighborhood with local residents, followed by home hospitality;
- Guided tours to Israel's classic attractions.

Israel & European extensions can be arranged.

For more information call the Jewish Federation at 478-6200.



The Rabbi Writes



Rabbi David Kaplan

Old Disease Also Affects Jews

The Jewish Community is slowly discovering that it is being affected by an old disease. For many years it was believed that Jews were almost immune to this ailment, but recent studies indicate that, in fact, this disease is affecting a sizeable proportion of the Jewish population. Although in the very early stages this illness may not be easily recognized, symptoms are evident long before it does its worst damage to the body. The malady is incurable; however, it may be arrested without further complications.

The disease being discussed is not cancer, arthritis, AIDS or Alzheimer's, but rather chemical addiction in all its forms. It may be alcoholism, a cocaine habit or even dependency on prescription drugs. The problem has been with us for many years, but due to lack of recognition by the formal Jewish community, the disease has been thought not to exist in Jewish circles.

One needs only go to a retreat from JACS (Jewish

Alcoholics, Chemically dependent, and Significant others) to realize how devastating the problem really is. It affects Jews who are identified as Hasidic, Orthodox, Conservative, Reconstructionist, Reform and unaffiliated. When one considers all forms of addiction, Jews are as addicted as the general population. We do have some special problems as Jews, however. Addiction has never been thought to be a problem for Jews. This creates a dilemma for the Jewish alcoholic and drug addict. He says, "If I am an alcoholic I must not be Jewish. On the other hand, I am Jewish, so I cannot be an alcoholic." Part of the disease of addiction is denial. We, as a community, have made recovery harder for Jewish addicts because of our refusal to accept that alcohol and drug addiction is very much a part of American Jewish society.

The problem is further complicated by our lack of support of the recovering addict. I was told the following story of a

young man in Alcoholics Anonymous. Having begun to put his life back in order, he went to his parents to explain what had happened and what progress he had made. He told them that he wanted to help other Jewish alcoholics to recover by telling his story at the synagogue. The only response from his folks was "What a *shanda* (shame)! Our boy an alcoholic! What a *shanda*!"

The *shanda* is not in being addicted to drugs, but in refusing treatment to arrest the disease. The *shanda* is in being rejected by the Jewish community whose support the recovering addict needs. The *shanda* is that the Jewish Community shares in the denial of the disease.

If you think hard, you may realize that you know a Jew who is suffering from chemical addiction. You cannot cure him. You may not even be able to get him to admit that he has a problem. But, we can, as a Jewish community, create an atmosphere which is conducive

to recovery. We need to change our attitudes and beliefs about alcoholism and drug addiction. We need to see it as a disease which can be arrested. We need to admit that it does affect Jews. Most Alcoholics Anonymous meetings are held in churches. Some should be held in synagogues or community centers. AA is not a

Christian group and the AA program of recovery is compatible with Judaism.

I hope you will ask yourselves what we can do to help. There are answers. Please feel free to contact me at Temple Beth El, 301 Possum Park Rd., Newark, DE 19711, (302) 366-8330.

Year In Review —

(Continued from Page 8)

Jewish married couples at the J.C.C.; and the Rabbinical Association's Conversion Class. We also provided training to staff members of the J.C.C. and the Albert Einstein Academy.

The staff, with the able help of Jewish Family Service volunteers, continued our communal services program in 1987. Volunteers visited Jewish patients in State institutions throughout the year, and prepared and served meals at the Emmanuel Dining Room. Staff members arranged for Passover baskets, Hannukah

gifts, and financial and material assistance for needy Jewish families.

Finally, until its transfer to the Resource Center of the Y.M.C.A. on October 1, we administered the Brandywine Social club with its socialization program for handicapped young adults.

What I have described is merely a sampling of what we did in 1987, and what we can and will continue to do in 1988. If you could use any of the services I described or any other kind of help for you or your family, it would pay for you to call 478-9411.

**ACCOUNTANTS
BOOKKEEPERS
CONTROLLERS
EDP EXPERTS**

**SKILLED
PERMANENT**



**ROBERT HALF
OF WILMINGTON, INC.**

Brandywood Plaza — Foulk & Grubb Roads
Wilmington, DE 19810
Offices on Three Continents

475-4500

ABRAHAM BAILIS, C.P.A.
Director

and for emergencies, vacations, special projects

**SKILLED
TEMPORARY**

**accountants
bookkeepers
edp experts
accountemps®**

Div: Robert Half of Wilmington, Inc.

Brandywood Plaza — Foulk & Grubb Roads
Wilmington, DE 19810

475-4500

ABRAHAM BAILIS
Director

*Slightly
over
qualified*

CLEARANCE SALE

**ALL 14K GOLD
CHAINS ½
PRICE DURING
THIS SALE**

**SEE OUR LARGE
SELECTION OF STERLING
SILVER JEWELRY AT 50%
SAVINGS.**

**SPECIAL OF THE MONTH:
STERLING SILVER DOOR
KNOCKER EARRINGS.
SALE PRICE \$5.98**



**SEE OUR
LARGE SELECTION
OF ANTIQUE AND
ESTATE JEWELRY
AT DISCOUNT
PRICES.**

**BRING IN YOUR
OLD DIAMONDS AND
LET US DESIGN A NEW
MOUNTING FOR YOU.**

**SAVE 40% ON
REMOUNTS
DURING THE MONTH
OF JANUARY.**

HARRIS JEWELERS

309 Branmar Plaza
1812 Marsh Road
Wilmington, DE 19810
Phone: 475-3101

4377 Kirkwood Hwy.
Almart Plaza
Wilmington, DE 19808
Phone: 999-9901

Market Street Mall
824 Market St.
Wilmington, DE 19801
Phone: 655-6253

PHILIP BERGER

Associate Broker

Weichert



Realtors®

Office: 302-478-3800
Res: 302-764-8384



Residential-Commercial

VISIT OUR SHOWROOM

*Fuji, Lotus, Ross, Shogun
Mongoose, Motobecane, ATB, Nishiki*
Skateboards & Clothing - BMX Products - Scooters

We have Cool-Max Cycling Clothing
• Vans • Airwalk • Vision Shoes

SALES • PARTS • ACCESSORIES • REPAIRS

HENRY'S BICYCLE SHOP 2901 Lancaster Ave.
654-0361 • 571-0517 Wilmington, Del.

*PLACERS · TEMPS ·
PLACERS · TEMPS ·
PLACERS · TEMPS ·*

A Division of The Placers, Inc.

2000 Pennsylvania Ave.
Wilmington, DE
302/571-TEMP
Christiana Executive
Campus
Rt. 7 & Churchmans Road
302/366-TEMP

2 Righter Parkway
Delaware Corporate Center
U.S. 202
302/479-TEMP
Granite Run Office Plaza
Suite 101
(Behind Toys 'R-Us)
215/891-TEMP



Dr. Steven Fertig

- Musculo-skeletal conditions
- Low back pain
- Sciatica
- Disc problems
- Headaches
- Neck pain
- Muscle spasms

Feel The Difference

"Chiropractic doesn't have to hurt to help, and results don't have to take forever."

Call today for a convenient appointment. You'll appreciate our personalized approach to patient care.

Most insurance plans accepted
Workman's Comp. & No Fault

In North Wilmington
Fertig Chiropractic Center
(302) 475-3200

2036 Foulk Rd., Suite 101, Foulkwood Professional Bldg., Wilmington
(Adjacent to Stanley's Tavern)
Most Major Credit Cards Accepted



Most Major Credit Cards Accepted



Will Jewish Teens Become Jewish Adults?

MIAMI, FL — To ensure that the greatest number of Jewish teenagers become Jewish adults, North American Jewish leaders have been urged to support a fundamental advance in the quality of teen programming in their communities.

Hundreds of lay and professional leaders gathered to discuss programming strategies and share their experiences at a Forum entitled, "Will Jewish Teenagers Become Jewish Adults." Teenagers involved in Jewish organizations and parents concerned about their own children and grandchildren also attended the Forum, which was part of the 56th General Assembly of the Council of Jewish Federations at the Fontainebleau Hotel in Miami Beach, FL.

Dr. Steven M. Cohen, Professor of Sociology at Queens College, City University of New York, addressed the central question of why the Jewish community should support a richer life for Jewish teenagers. He noted that the situation for Jewish teens today is no worse than it was two or three decades ago, but also expressed dissatisfaction that it was not any better.

Dr. Cohen went on to explain that an unfortunate paradox exists in the Jewish community in relation to teen programming: while research clearly shows that efforts to promote participation in Jewish life are most effective during the teen years, in most communities there is a decline in expenditures for youth groups and other quality programming during this period.

In order to dissuade Jewish teens from "dropping out" of Jewish life, local Jewish leaders must extend their significant investment in young children to the teenage constituency. Lay leaders and communal professionals alike

should familiarize themselves with the reasons for the low level of teen involvement in their community, such as: suburbanization, which isolates teens from their peers and causes transportation problems; the rift between day school and high school students, which results in distinct audiences for services and programs; a growing careerism and materialism among teenagers, which often places after-school jobs or other activities before organizational involvement; and divorce, which leads to a host of family and social problems.

However, according to Barry Shrage, Executive Director of the Combined Jewish Philanthropies of Boston, regardless of the restraints on the time and attention of teenagers today, it is a failure of policy — and not the teens themselves — that the level of involvement in Jewish life is not greater.

Recounting several success stories and anecdotes from his professional experiences, Shrage assured the audience that if the community put in the required resources, they would see results. His suggestions for increasing the involvement of teens included focusing on the marginally affiliated, using personal contact and outreach and gaining access to the names of local teens through the programs to which they used to belong, such as congregations and Jewish community centers.

During the question-and-answer period which followed the presentations by speakers, several Jewish teenagers from across North America discussed their feelings about the Jewish community's commitment to teen programming. The teens urged local leaders to include them in the planning process and to avoid viewing the situation with an "us versus them" attitude.

Israel And Germany To Share Research

The governments of West Germany and Israel will jointly undertake 28 research projects beginning next year, mainly in scientific fields. The projects in medicine, irrigation, agriculture, physics, literature and other areas are the outcome of a 1986 agreement between Chancellor Helmut Kohl and the then-prime minister of Israel, Shimon Peres. They established the German-Israeli Joint Research Foundation and each committed his government to make available 75 million marks (about \$47 million) for grants in research.

A committee of the foundation met in Bonn, West Germany, to decide on the projects. Heinz Risenhuber, the minister for research, presided. The foundation's constitution

calls for projects of interest to both countries. When fully funded, by 1990, the foundation is expected to distribute some 10 million marks (about \$6 million) a year in research grants.

The work will be done mainly in Israel, with German scientists or scientific institutions participating. Observers here noted that this will amount of channeling more financial assistance from West Germany to Israel. The Bonn government now makes available 140 million marks a year in long-term development credits to Israel. The amount has not been increased since 15 years ago, when Israel and West Germany established diplomatic relations.

- Vertical Blinds
Levelor
Quaker Maid
Louvre Drape
- Pleated Shades
Verosol
DelMar
Joanna
- Micro (½") & Mini (1") Blinds
Bali
Levelor
Hunter Douglas

Also Available

- Custom Drapery or Curtains
- Pillows
- Cornices
- Lambricans
- Bedspreads
- Laminated Window Shades

Made in the Shade

An interior design shop which specializes in window treatments, wall coverings and unique items not displayed in other local shops.

Free At-Home Consultations & Installations

3652 Silverside Road
Talleyville Towne Shoppes
Wilm., DE 19810
(302) 478-6082

9-5 M-F
10-3 Sat.



Bob Weiner
Jewish Folk Singer

With or Without Guitar

Israeli
Yiddish
Chassidic
American
Folk Music

762-1029
658-8700

cookware & utensils, plus
a healthy dash of how-to!

creative cooking

christiana mall 366-7484
branmar plaza 475-0390

Israel Disappointed By U.S. Vote

By YITZHAK RABI

Israeli diplomats at the United Nations expressed disappointment over the U.S. decision to abstain from voting on a Security Council resolution, adopted December 22, deploring Israel's handling of the disturbances in the Gaza Strip and West Bank.

The vote in the 15-member Security Council was 14 in favor with no objections. Israeli diplomats said they regretted that the United States did not veto this "one-sided and unbalanced resolution," by voting against it. The United States is one of the five permanent members of the Security Council and as such enjoys veto power over any resolution in the council.

The resolution states that the Security Council "strongly deplores those policies and practices of Israel, the occupying power, which violate the human rights of the Palestinian people in the occupied territories, in particular the opening of fire by the Israeli army, resulting in the killing and wounding of defenseless Palestinian civilians."

The resolution calls on Israel to adhere to the 1949 Geneva convention on conduct of an occupying power "and to desist forthwith from its policies and practices that are in violation of the provisions of the convention."

It also requests that the secretary general of the United Nations, Javier Perez de Cuellar, "examine the present situation in the occupied territories by all means available to him, as well as submit a report no later than January

1988" on how to ensure the safety of the Palestinians in the territories.

In order to avoid an American veto of the resolution, the Arab countries and the Palestine Liberation Organization agreed to softer language, dropping their original request that Israel be "condemned" and that the Security Council dispatch a special U.N. representative to the territories to investigate the situation. The PLO's attempts to stiffen the resolution with sharper language resulted in at least two postponements of the Security Council vote. Some diplomats suggested that the PLO was interested at one point in a U.S. veto as a way of demonstrating a close association between Israel's policies and Washington.

Ambassador Yohanan Bein, Israel's deputy permanent representative, said, in an address to the Security Council before the vote, that the resolution does not constitute "a reasonable and balanced attempt to address the issue at hand."

He charged that the riots were instigated by the PLO in order to "prolong and justify a one-sided political debate" against Israel.

Bein substituted for Ambassador Benjamin Netanyahu, who is in Israel for a three-week visit.

Herbert Okun, representing the United States in the absence of Ambassador Vernon Walters, told the Security Council that the United States was abstaining on the resolution, rather than voting for it, because it contained

"generalized criticism of Israeli policies and practices."

He also noted that the resolution ignored provocations to Israel's security forces. Israeli diplomats contended that the resolution completely ignored Israeli victims of terror in the territories.

The United States abstained, in December 1986, on a Security Council resolution deploring Israel for shooting civilians at Bir Zeit University in the West Bank. It also abstained in September 1985, when the Security Council censured Israel for its raid on the PLO headquarter in Tunisia.

In Jerusalem, meanwhile, the Foreign Ministry issued a strongly worded statement, in response to the U.S. abstention and the concern expressed by President Reagan over the unrest in the territories. "There is neither a foundation, nor justification to blame Israel in connection with the recent difficult and regrettable events in Judea, Samaria and Gaza," the Foreign Ministry said.

"Israel rejects any attempt to blame her and the instigators of the unrest equally," the statement read, adding that Israel hopes that the United States will take special care not to adopt such views which would be interpreted by "extremist and violent elements" as a demonstration of support.

Israel will continue to bear its responsibility toward the Jewish and Arab residents to restore order, and to aim toward mutual understanding, a dialogue and peace with its neighbors, the statement concluded.

'Who Is A Jew' Called U.S. Problem

MIAMI — The source of considerable controversy in the North American Jewish community, the critical question of "Who is a Jew," discussed at a General Assembly forum was deemed to be primarily a North American Problem that cannot be solved by the Israelis alone.

General agreement on this issue and a discussion of the legislative attempts in the Israeli Knesset to amend the Law of Return occurred during the 56th General Assembly of the Council of Jewish Federation.

"This is an issue on the front burner of the American Jewish community," acknowledged Peggy Tishman, chairman of the forum. "It is highly complex, multifaceted and long-term. The dialogue... has just begun."

The heart of the matter is the effort to amend the Law of Return, which guarantees Israeli citizenship to all Jews who emigrate to Israel. A proposed amendment, narrowly defeated by the Knesset this past June, would only recognize as Jews persons born to a Jewish mother or individuals who convert to

Judaism according to *halachah*, Jewish law. Such an amendment would recognize as Jews those who convert within the Orthodox movement, but would not recognize those who convert within the Conservative, Reform or Reconstructionist movements. CJF has passed resolutions urging the Israeli government to remove the issue from the legislative agenda.

A host of differing opinions were expressed during the forum. According to Dan Meridor, a Likud Party member of the Knesset, "It is wrong to judge this issue according to American constitutional concepts, which have a separation of religion and state... Israel is a Jewish state. We have to try to reach a consensus in Israel and the American Jewish community... This problem should be solved where it originated: in the American Jewish community."

Representing the opposite side of the Israeli political spectrum, Nava Arad, a Labor Party member of Knesset, cautioned that an atmosphere of religious pluralism is imperative to maintain the intimate partnership

between Israel and Diaspora Jewry. "Who am I to tell them (immigrants) when they come to Israel that they are not a Jew," she said. "The original purpose of the Law of Return was for every Jew to have a home."

Noting that the issues have been exploited and blown out of proportion, Rabbi Yedidya Atlas, of the Office of the Chief Rabbinate in Israel, said that their entirety... the *halachah* is the common denominator." He added that in North America, Orthodox conversions are the only ones that are universally accepted.

"This is primarily an American problem, not an Israeli problem," commented Rabbi Haskel Lookstein, an Orthodox theologian who serves as president of the New York Board of Rabbis. "It's time we started to solve that problem. If we don't solve this problem, it's going to tear us apart no matter what Israel does."

Lookstein urged that the Law of Return remain as is. "This law has worked for (the absorption) of 1.5 million people," he said.

NEW CASTLE FARMER'S MARKET
Finest and Freshest Meats and Produce
Delicious Baked Goods
SOMETHING FOR EVERYONE

Rt. 13 across from Wilmington Airport
 Open Friday & Saturday 10-10; Sunday 10-6



**IS YOUR SUPPLIER
 HOLDING YOU
 HOSTAGE?
 DEMAND ONLY
 THE FINEST
 PRODUCTS &
 SERVICE FROM US.**



RUD Distributors Ltd., Inc.

*Wholesale Distributors of Cigars-
 Tobaccos-Candy-Maps-Books*

WILMINGTON, DELAWARE 19806

302-428-1-RUD



RESTAURANT AND DELI

KICK OFF

**Your Superbowl Party and
 Score With Our Crowd
 Pleasing CATERING**

Sample Menu:

Pre-Game:
 Assorted
 hors d'oeuvres
Half-Time:
 Sandwiches/Salads
 Fresh
 Platters/Chicken
YOU NAME IT!

Wrap-Up:
 The best homemade
 desserts in town!

**Don't Get Sacked
 Order Early!**



•Restaurant Hours M-Th. 11 to 9,
 Fri. 11-10, Sat. 9-10, Sun. 9-9

1710 Naaman's Rd.
 Wilm., DE 19810

475-4900

Schoenberg Memorial Chapels



In the hallowed tradition of our faith....

a dignified setting with reverence for customs and observances in strict accord with family wishes.

519 Philadelphia Pike
762-0334

COMPLETE INSURANCE COVERAGE! UNDERWRITING FACILITIES FOR FIRE • CASUALTY • AUTO • MARINE • SURETY BONDS • SPECIALISTS FOR UNUSUAL RISKS



HARRY DAVID ZUTZ, INSURANCE
300 DELAWARE AVENUE
P.O. BOX 2287
WILMINGTON, DE 19899
658-8000

COMPREHENSIVE COVERAGE FOR ATTORNEYS, PHYSICIANS, DENTISTS, ARCHITECTS, ENGINEERS, REALTORS, NURSES, PHARMACISTS, AND OTHER PROFESSIONAL DISCIPLINES

Professional Liability Insurance, Inc.



Obituaries

Lewis Freedman

Lewis Freedman, 92, formerly of Wilmington, died Dec. 22.

He is survived by his wife, Dora; two sons, Dr. Arnold Freedman of Pittsburgh, and Dr. Bernard Freedman of Peoria, Ill.; a daughter, Ruth F. Temin of Silver Spring, Md.; seven grandchildren and five great grandchildren.

Arrangements were made by Schoenberg's.

Irving Garfinkel

Irving Garfinkel, 62, of 908 Cranbrook Drive, Liftwood Estates, died on Dec. 21.

He is survived by his wife, Phyllis; a son, Daryl of Liftwood; two daughters, Cailah, of Wilmington, and Marla Gold, of Sedgely Farms; a brother, Martin Samuel Garfinkel, of Jacksonville, Fla.; two sisters, Eleanor Slovin, of Wilmington, and Dorothy Getz, of Hallendale, Fla.; a grandson, Justin Gold.

Arrangements were made by Schoenberg's.

Jean Lehrfeld

Jean Lehrfeld, 76, of 8304 Society Drive, Claymont, died Dec. 27 in St. Francis Hospital.

Mrs. Lehrfeld's husband, Benjamin, died in 1975. She is survived by a son, Gerald of Chalfonte; a brother, Arnold Binder of Irvine, Calif.; three sisters, Mollie Istin of Los Angeles, Ann Schwartz and Minnie Stone, both of New York City; and three grandchildren.

Tillie Jaffe

Tillie Jaffe, 78, of Elsmere, died on Dec. 30. Mrs. Jaffe was a homemaker.

She is survived by a sister, Edith Adler, of Wilmington; her husband, Isadore, died in 1983.

Arrangements were made by Schoenberg's.

Paul H. and Judith K. Spiller

A memorial service for Paul H. and Judith Kimmell Spiller will be held at 11 a.m. Wednesday in the Adas Kodesch Shel Emeth Congregation, Washington Boulevard and Torah Drive.

Mr. Spiller, 40, and Mrs.

Spiller, 35, both of the unit block of Pinecrest Drive, Pinecrest, died Dec. 31.

Mr. Spiller was a partner in the Wilmington law firm of Kimmell, Spiller & Weiss. He was a 1970 graduate of the University of Delaware and earned a law degree in 1973 from John Marshall Law School in Chicago. He was admitted to the Delaware bar the same year.

The Spillers were members of the Adas Kodesch Shel Emeth congregation. Judith Spiller belonged to the sisterhood and board of governors of the congregation, and was a volunteer at Christiana Hospital and Kutz Home.

She was a librarian's aide and a home room mother at Tower Hill School. She was also a life member of the Kutz Home and of Hadassah. She belonged to the National Council of Jewish Women.

In addition to their sons, Harvey, Larry and David, Mr. Spiller is survived by his parents, Benjamin and Bebe Spiller of Radnor Green; and a brother, Dr. Dennis Spiller, of southern Florida. Mrs. Spiller is also survived by her parents.

Bert B. and Sylvia Kimmell of Claymont; a brother, Morton R. Kimmell of Chadds Ford, Pa.; and a sister Marlene Leff of Villanova, Pa.

Arrangements were made by Schoenberg's.

Rose Best

Rose Best, 90, formerly of Margate, N.J., died Jan. 6 in Kutz Home Inc., 704 River Road, her residence since 1986.

Mrs. Best's husband, Lewis, died in 1972. She is survived by a son, Morton of Philadelphia; a daughter, Nannette M. Finkle of Radnor Woods; a brother, Louis Oliver of Hollywood, Calif.; a sister, Ruth Strauss of Philadelphia; four grandchildren and three great-grandchildren.

Arrangements were made by Schoenberg's.



CALL US FIRST!

HAPPY HARRY'S HOME HEALTH CARE CENTER



IN-HOME EQUIPMENT PROGRAMS

- RESPIRATORY
- REHABILITATION AIDS
- DIABETES MONITORING
- PAIN CONTROL DEVICES
- OSTOMY SUPPLIES
- ORTHOTICS • HOSIERY

—PLUS—
COMPLETE ENTERAL AND I.V. SYSTEMS WHICH INCLUDE CHEMO AND ANTIBIOTIC THERAPY

Phone (302) 454-3390

- FREE IN-HOME EVALUATION
- FREE DELIVERY AND SET-UP
- WE BILL MEDICARE AND ALL MAJOR INSURANCE COMPANIES



HOME HEALTH

CARE SERVICE

EVERYTHING FOR YOUR
16-A TROLLEY SQUARE



FAMILY'S GOOD HEALTH
WILMINGTON, DE 19806

ALSO AVAILABLE AT ALL HAPPY HARRY DISCOUNT DRUG STORES!

Office Furniture



We have it all in stock, a huge selection for immediate delivery.



BERGER BROS. INC

Office experts since 1919.

Located at 3rd & Market, Wilmington
302-655-7166

For Nursing Care in Your Home

RELY ON US!



Medical Personnel Pool

MEDICAL PERSONNEL POOL®
MPPSM provides experienced home health care professionals — from live-in companions to Registered Nurses.

Call us 7 days a week, 24 hours a day, for home health care you can rely on.

995-6696

2055 Limestone Rd.
Suite 213
Wilmington, DE 19808

U.N. —

(Continued from Page 3)
arena in which to cheer the PLO.

But just in case, Israel had its reply. Ambassador Jochanan Bein, deputy permanent representative, suspected that "what this debate really wishes to question is Israel's inalienable right to exist. What they really wanted — and did not dare — was to title this debate 'The Question of Israel.'"

"Let there be not doubt — Israel is not a question. It is an answer... Israel is here to stay, even if some delegations would like to undo this fact."

But maybe the "Question of Palestine" should not be answered. Maybe it should be expanded — to include its major component, Jordan, Amman vehemently rejects the idea that Jordan is Palestine, or at least 77% of the original Palestine Mandatee. Yet King Hussein inadvertently recognized this just last week, recalling the connection between his Hashemite dynasty

and Palestine and "Jordan's support for the Palestinian brothers, who are linked to us throughout history and kinship. Above all that, we are one people having common destiny and common objectives."

Perhaps the annual debate should be joined by other questions. No doubt the "Question of the Ottoman Empire" could shrink historical scale the national myths and ambitions of Syria and Iraq, and illuminate the uncertain pedigrees of Kuwait and Lebanon.

Certainly, the "Question of the Hejaz" could reveal much about the recent, dubious creation of Saudi Arabia. Why, with a little more diligence, the General Assembly could be in session year-round...

U.S. Israel —

(Continued from Page 2)

allows increased Soviet Jewish emigration; and passed legislation to close PLO offices in the United States.

There were many other actions which

Here Is The Answer Key To Last Puzzle

Here are the answers to last questions on the Twelve Tribes of Israel.

- Q.- Which tribes formed the Kingdom of Judah?
- A.- Judah and Benjamin.
- Q.- Which tribes were in the Kingdom of Israel?
- A.- The other ten.
- Q.- Which are the "Lost Tribes of Israel?"
- A.- The tribes of the Kingdom of Israel.

strengthened the ties between Washington and Jerusalem, including revived funding of \$34 million to begin construction of a Voice of America transmitter in the Negev, an increase of \$100 million (to \$400 million) in the amount of military aid Israel can spend locally for advanced weapons systems—to help compensate for cancellation of the Lavi fighter project—\$25 million refugee resettlement in Israel, and \$5 million for cooperative

projects among the United States, Israel and developing countries. Large and small, the items all point in the right direction.

Passage of Foreign Aid Authorization legislation in the House by a record 286-122 vote should begin to erode the conventional wisdom that foreign aid lacks grassroots support. It is there and, when it makes itself felt, Congress is more than willing to recognize it.

Netanyahu Blames PLO For Deaths

By HUGH ORGEL

TEL AVIV — Benjamin Netanyahu, Israel's ambassador to the United Nations, charged the Palestine Liberation Organization with responsibility for the deaths of Arab children shot by Israel

Defense Force soldiers during the recent rioting in the West Bank and Gaza Strip.

"Fresh bodies — even if they are of Arab children — are exactly what the PLO wants in order to prevent a peace settlement," Netanyahu told reporters after delivering a lecture at Bar Ilan University on

December 29.

Asked if the PLO deliberately planned to have children shot, Netanyahu said there may have been some spontaneous elements in the recent disturbances, but they would not have lasted so long or been so violent if there were no organization behind them.

Masked PLO operatives went into schools and forced boys and girls out into the streets," the diplomat charged. "Once you create such a situation, the rest can be spontaneous."

Netanyahu defended plans to deport Palestinian activists, despite protests in Israel and abroad that it would be a viola-

tion of international law. He said the critics "forget that the Geneva Convention (of 1949) was formulated against the background of World War II, when mass populations were deported and displaced.

"Here, we are talking about deporting a few individuals," Netanyahu said.

Yiddishists And Secular Humanists

NEW YORK (JTA)—Yiddishists and Jewish secular humanists will each be represented by new organizations, it was announced at separate inaugural conventions held recently.

The founding conference of the American Committee for Yiddish and Jewish Culture was attended by more than 125 delegates from major Jewish organizations concerned with stimulating Yiddish culture in the United States and abroad, including representatives of the Workmen's Circle, Jewish Labor Committee, Jewish Forward Association, Labor Zionist Alliance, I.L. Peretz Writers Union and Zerubavel-Goldman-Tyberg Poale Zion Circle.

According to the founding constitution, the new, New York-based organization will "undertake the high responsibility of spreading the Yiddish word, encouraging the use of Yiddish as language and literature, creating an awareness of values and pleasures of Yiddish culture, and binding together in common purpose all organizations."

Farmington Hills, Mich., meanwhile, will be headquarters for the Federation for Secular Humanistic Jews. More than 150 delegates gathered at a founding conven-

(Continued to Page 14)

WHY BE ALONE?

... pick up the phone and call

JEWISH DATING SERVICE

You Just May Meet The Right Person
Effective • Inexpensive • Reliable • Tri-State

Call/Write - FREE QUESTIONNAIRE
P.O. Box 14393, Phila., Pa. 19115

215-342-9951

YOU NAME IT WE LEASE IT.

At Delaware Auto Leasing we provide: No down payment. 12 to 66-month lease plans. No extra charge for purchase option. Extended service contracts. Cash or trade for your present car or truck. Executive leasing plans available with personalized service including pick-up and delivery. Loaner cars available. Small fleet management available. For one car or a fleet, call (302) 656-3154.

'88 VOLKSWAGEN FOX, 2 DR \$109*	'88 TOYOTA TERCEL HB \$128* <small>48 mo.</small>	'88 CHEVROLET CORSICA \$159*	'88 CHEVROLET FULL-SIZE P/U \$176*
'88 HONDA ACCORD SEDAN \$178*	'88 FORD AERO STAR VAN \$178*	'88 JEEP CHEROKEE 4x4 \$219*	'88 CHEVROLET CAMARO IROC-Z \$228*
'88 VOLVO DL SEDAN \$236*	'87 NISSAN 300ZX \$288*	'88 STERLING 825S \$319*	'88 CADILLAC DE VILLE \$349*
'88 SAAB 900 TURBO \$337*	'88 MERCEDES BENZ 190E \$394*	'88 CADILLAC ELDORADO \$399*	'87 CADILLAC ALLANTE \$599*

*60 MOS. CLOSED END LEASE. \$1000 down, cash or trade. 1st payment, refundable security deposit due on delivery. Taxes, tags, extra. Multiply 60 mos. times payment for total amount.

Delaware Auto Leasing

1605 Pennsylvania Ave., Wilmington
Phone (302) 656-3154



WHOLESALE PRICES TO THE CONSUMER

Don't give your car the cold shoulder...

Winterize at Keil's

Michelin X4A — All Season Radial

155/80R13XA4	47.32	205/75R15XA4	82.71
165/80R13XA4	51.65	215/75R15XA4	87.13
185/75R14XA4	75.40	225/75R15XA4	89.53
195/75R14XA4	78.44	235/75R15XA4	93.53

TUNE UP

4 Cyl. 6 Cyl. 8 Cyl.
\$40⁸⁸ \$47⁸⁸ \$49⁹⁰
*Install Spark Plugs *Install Air Filter
*Install PC Valve *Set Timing *Adjust speed (where applicable) *Inspect rotor, dist. cap & cables

BRAKES

New Pads - Inspect Calipers - Resurface Rotors - Bleed System - Road Test

Semi-Metallic Slightly Higher

DISC DRUM

\$59⁹⁵ \$54⁹⁵
Reg. Rear

WHEEL ALIGNMENT

Set - Toe & Camber
Caster Most Cars - Shimming Extra
\$19⁹⁵

OIL CHANGE FILTER LUBE

5 qts. oil - Includes many imports & light trucks
\$14⁹⁵

WINTERIZE

2 gal. Antifreeze, check belts & hoses.
\$16⁹⁵

Keil's

Next to Freedom Ford 214 E. LEA BOULEVARD
WILMINGTON, DELAWARE 19802
(302) 762-6610

Gaza —

(Continued from Page 1)

The general strike was accompanied by violence. The most serious incidents occurred in Nazareth, in Galilee, the largest Arab city in Israel, and in the town of Umm el-Fahm, where demonstrators blocked the Afula-Hadera highway, a main traffic artery.

But violence also erupted in the heart of Israel — in Jaffa, which is part of the Tel Aviv municipal area, and at Lod, near Ben-Gurion Airport. Parallel strikes in the West Bank and Gaza Strip, which

also featured violence, hit Israel's construction and textile industries hard.

Some analysts thought the strike was a singular event, an expression of frustration by the Israeli Arabs who have grievances not linked to the occupation. These analysts said the local population would soon return to business as usual.

The chairman of the National Committee of Arab Mayors, Ibrahim Nimer Hussein, said the strike should not be seen as a sign of growing alienation among Israeli Arabs. But others saw the dislocations as minor compared to the spectacle of Israel's 750,000 Arab

citizens rising in sympathy with Palestinians in the territories for the first time.

Many thoughtful Israelis discerned a new, dangerous melding of Palestinian nationalism with religious fervor. The "return to religion" has been an important feature of Palestinian life for some years, and now it seems to increasingly be linked with nationalist motifs, even in Israel proper.

But the lines between Islamic fundamentalism and Palestinian nationalism are fading. The PLO flag flew from the minarets of mosques in Gaza during the worst of the rioting last week.

The muezzins — those who call the faithful to prayer — rallied Palestinian demonstrators, mostly youths, to the barricades with their rocks and gasoline bombs. Palestinian nationalism took on aspects of a holy war. This is an ironic development because Israeli policy had encouraged religious groups considered conservative, while cracking down on politically

radical elements, particularly the youth in Arab colleges and high schools.

By midweek, the worst of the troubles seemed to be over. Defense Minister Yitzhak Rabin reported that 21 Palestinians had been killed and 158 wounded since the disturbances began on Dec. 9. On the Israeli side, 31 IDF soldiers and border police and 19 civilians were injured.

Rabin vowed that Israel would "fight united with all our strength against any group seeking to undermine our full control over Judeaea, Samaria and Gaza." He warned that the authorities would resort to administrative arrests and expulsions from the territories if necessary to maintain order and security.

He described to the Knesset the standing orders that now apply to armed forces. They are permitted to shoot "to hit" if all non-lethal methods of riot control prove ineffective in dispersing rioters. The recourse to live ammunition from tear gas and rubber bullets will be determined by the immediate danger to the lives of the soldiers. Rabin stressed to the Knesset that as defense minister he is responsible for the lives and safety of troops in the lawful performance of their duties.

Rabin also urged Israeli Arabs not to be drawn into violence and disregard for the law by agitators and extremists. He had the same message for Palestinians in the territories. "The continuation of this violence will bring only more grief and pain to the instigators and participants," Rabin warned. "Gaza and

Hebron, Ramallah and Nablus — they will not become Beirut or Sidon or Tyre," he said, referring to the Lebanese cities where near chaos has reigned for years.

The defense minister promised that Israel would do its utmost to end the disturbances, despite negative reaction around the world. His policies were endorsed by the Inner Cabinet, the government's top policy-making body whose 10 ministers are divided evenly between Labor and Likud.

But while Israel was concerned, although not swayed, by criticism from friends abroad, including the United States, it was seriously disturbed by the growing strains in its relations with Egypt, the only Arab country with which Israel has a peace treaty.

Egypt delivered five formal and successively more forceful protests to Israel over the disturbances. The Israeli ambassador in Cairo, Moshe Sasson, was summoned repeatedly to the Egyptian Foreign Ministry to receive admonitions over Israel's behavior.

Sasson has reported to Jerusalem that anti-Israel feelings are running high in Egypt. There is fear that President Hosni Mubarak may be forced under pressure from hard-line Arab states and the Palestine Liberation Organization to recall the Egyptian ambassador from Tel Aviv.

The last time that happened, after the Sabra and Shatila refugee camps massacres in west Beirut in September 1982, relations between Israel and Egypt remained frozen for more than three years.

national Federation of Secular Humanistic Jews.

Their announced purpose is to "attract and be a voice for the more than 50 percent of Jews on this continent who do not belong to temples and synagogues because they prefer a cultural Jewish identity."

The Federation already authorizes lay leaders to perform weddings and other ceremonies.

Humanism —

(Continued from Page 13)

tion in November in East Hanover, N.J., sponsored by the Congress of Secular Jewish Organizations and the Society for Humanistic Judaism.

The new federation is one of five such new regional organizations formed since the creation last year of the Inter-

MAXI-SAVER ISRAEL

11 Days
Jan. 21-31 • Feb. 18-28

Includes Round Trip Airfare via TWA, 9 Nights! First Class Hotel Accommodations, Israeli Breakfast Daily, 2 Dinners, 6 Days of Sightseeing, All Taxes & Service Charges at Hotels, Israel Folklore Evening & More.



*excludes Tax & Security Charge Airfare alone from \$569 round trip

JAY PRESS

INTERNATIONAL TRAVEL EXCHANGE
2410 RHAWN ST., PHILA.
(Just West of Roosevelt Blvd.) (215)

332-2444



WE KNOW HOW TO HELP

WILMINGTON 575-1700
NEWARK 738-3500
CONCORD PLAZA 478-6110
DOVER 1-734-5379
Gilbert J. Spiegel Founder
Pat Spiegel Chalphin President

Classifieds

Classified ads are available at \$1.00 per line (at least two lines, please). Send your ad, with check, to Classified Ads, The Jewish Voice, 101 Garden of Eden Rd., Wilmington, DE. 19803. (302) 478-6200

FOR RENT

BEAUTIFUL JAPANESE HOUSE, tea house and pool. Located in Palm Beach, FL. 5 1/2 baths. February \$15,000. Other winter months - \$10,000. Call 305-848-9874, 302-655-3168, 302-656-1916, Dr. S. Ward Casscells

TOWNHOUSE TO SHARE in Wilm., professional preferred, call Julie at 575-1665.

HELP WANTED

BABYSITTER - Mature, loving for my N. Wilm. home. Own trans., refs., part-time 2 days/week. 2 children, ages 5 & 8. Call 478-8785 Tues./Th./Sun. after 4 p.m.

BABYSITTER - in my home for newborn. 2 to 2 1/2 days per week, mature woman, exper. preferred. Call 764-7621.

ROOMMATE WANTED

TO SHARE A LARGE luxury townhouse - overlooks golf course. Includes fireplace, 3 bdrm., den, eat-in kitchen. Pike Creek Area. \$395 + 1/2 utilities. Call Steve at 994-2521 days, 368-7753 eve.

SERVICES OFFERED

DRAPERIES DRAPERIES! Get that same professional look at HALF THE PRICE of competitors. You supply the estimate and materials and we'll supply the labor. Residential and commercial contracts. Call for your appointment 658-4853.

HEINZELMENSCH - Will do the housework you hate. I can clean and organize your house or apt. quickly and thoroughly. Reasonable rates. Call 652-8069.

PARTIES - WEDDINGS - TAVERNS. BAR & BAT MITZVAH. All Occasion DJ - Old And New Sounds. Call: Harry Crowley (302) 655-0955.

STUDENT TOUR AND CAMP CONSULTANTS. No fee charged. Let our 15 yr. investigating programs, placing students, getting feedback help you select from over 500 programs; all sports, college and European and US programs. Dorothy Graff, Diane Petrosky, 215-642-5882.



Quick Class

The fastest way to Go For The Green in the Jewish Voice Classified.

Name _____

Address _____

City _____ State _____ Zip _____

Phone () _____

Advertisement: 36 characters per line (spaces included) at \$1.00 per line - two line minimum

Mail to:

Quick Class
Jewish Voice

101 Garden of Eden Road
Wilmington, DE 19803



© 1987 David S. Boxerman and Mark Saunders. All rights reserved.

"I'll see your pledge and pledge \$15 more."

Announcements/Events

Beth Emeth Breakfast

Robert Kerbel, Executive Vice-President of the Jewish Federation of Delaware, will be the guest speaker at the Brotherhood Breakfast Meeting of Congregation Beth Emeth on Sunday morning, January 17.

The title of Mr. Kerbel's presentation is "Dor L'Dor - The Future of the Delaware Jewish Community." He will also discuss the "Unity of the Jewish People." Minyan Service will begin at 9:15 a.m. Breakfast is scheduled at 9:30 and the presentation will begin at 10:00.

New Member Shabbat

At 8 p.m. on Friday, Jan. 15, at Congregation Beth Emeth, there will be a special shabbat service followed by an oneg shabbat honoring all new members. The new members will participate in the service, which has been prepared by Rabbi Grumbacher.

Sandwich Generation

On Monday, January 11, 1988, at 7:30 p.m., "The Sandwich Generation" will be the topic of a discussion led by Hedvah Campeas-Cohen of the Jewish Family Service at the meeting of the Wilmington Chapter of Hadassah, at the Jewish Community Center. You should plan to attend if you are now, or will be in the future, one of the many who will be caught between caring for your own children and your aging parents. Many of your questions will be answered. For more information contact Eva Weissman at 478-4514.

Plus-Forty Singles

Delaware County Plus-Forty Singles have scheduled a wine and cheese party for Sunday, January 10 at 3:30 p.m. There will also be a lecture on E.S.P. by Dr. Paul Sheldon of Villanova University. The meeting will be held at Beth El Synagogue, 715 Paxon Hollow Rd., Broomall, PA. For more information call Lorna Carroll (874-4757), Ruth Band (353-0907) or Jerry Mauze (449-9781).

THE LIMOUSINE

24 HOUR SERVICE

Formal Chauffeurs For All Occasions
•Tent Rentals Available For Lawn Parties

(302) 762-1994

Don't hesitate to call Tom Seidel, your Fuller Brush Man and Distributor for SABRA Panty Hose. (302) 798-1770



NEW DATE

JEWISH SINGLES 21-31 HAPPY HOUR at UNION STATION

Pennsylvania Ave. & Union St., Wilmington

THURSDAY, JANUARY 14, 1988

5:30-9:00 pm

COST: \$5.00 in advance
\$6.00 at the door

Good Food & Great Music

NEW DATE

Our Lowest Life Insurance Rates Ever Come With A Guarantee

If you're tired of having to shop around every year for low life insurance rates, of filling out lengthy applications, and of taking time-consuming physicals more often than you need to, Transamerica has the solution.

It's called Trendsetter 20® and it's not only convenient, it's affordable. The rates are guaranteed for 10 years.

First-Year Annual Premiums for \$250,000
(Nonsmoker, paid on annual basis)

TRENDSETTER 20 POLICY

Issue Age		1st Year Premium
35	Male	\$240
	Female	235
40	Male	290
	Female	250
45	Male	368
	Female	320
50	Male	470
	Female	400

In Delaware: 302-475-2250
In Pennsylvania: 215-459-5523

*Graded Premium Life Insurance to age 100. Premiums increase annually. Nonparticipating. Not available in all jurisdictions.

Yes! Tell me how to take advantage of Trendsetter 20's low rates and 10-year guarantee!

Name _____

Address _____

City _____ State _____ Zip _____

Phone _____ Date of Birth _____

Smoker Yes No Insurance Broker Yes No
Transamerica Occidental Life Insurance Company
2000 Foulk Road
Foulk Road Office Park Plaza
Wilmington, DE 19810

Transamerica
Life Companies
Transamerica Occidental Life Insurance Company
Working together is the best policy.

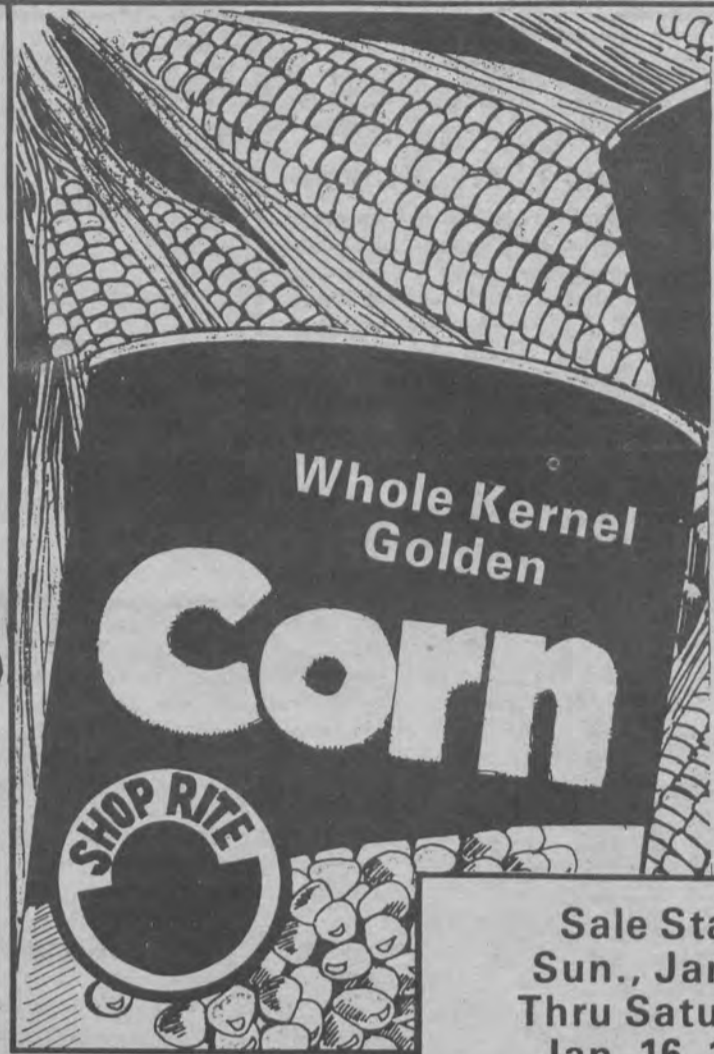
*The Power Of The Pyramid
is Working for You*



WHEN YOU WANT HIGH YIELD ANNUITIES

FRANK KESSELMAN, CLU.
TRANSAMERICA INSURANCE SERVICE





CAN CAN '88

Sale Starts
Sun., Jan. 10,
Thru Saturday,
Jan. 16, 1988.



Case of 24
5.94

Regular or Natural
ShopRite
Apple AS SEEN ON T.V.
Sauce

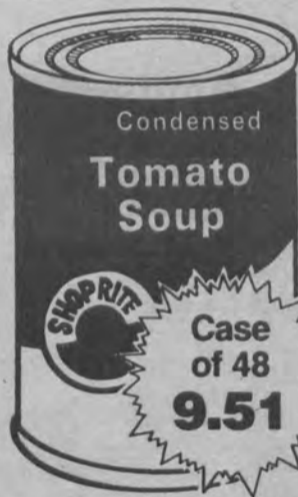
4
1 lb. cans
.99



Case of 24
4.76

All Varieties
Friskies
Buffet
Cat Food

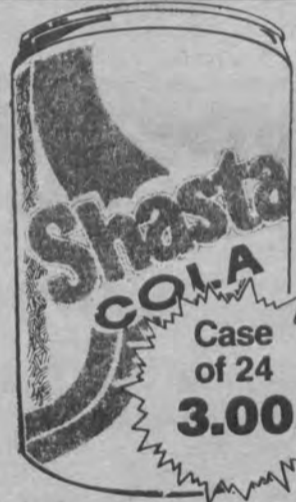
5
6 oz. cans
.99



Case of 48
9.51

Why Pay More™
ShopRite
Tomato
Soup AS SEEN ON T.V.

5
10 3/4 oz. cans
.99



Case of 24
3.00

Plus Dep. where Req.
All Varieties Reg. or Diet

Shasta
Assorted
Sodas

8
12 oz. cans
\$1



Case of 24
14.16

Imported Peeled
or Italian Style

Tuttorosso
or Ferrara
Tomatoes

AS SEEN ON T.V.
2 lb. 3 oz. can
.59

ShopRite Of First State Plaza
1600 Newport Pike
Open 7-11 Seven Days A Week

ShopRite Does It RIGHT!

