

# The JEWISH VOICE

"You heard it in  
The Jewish Voice"

PUBLISHED BY THE JEWISH FEDERATION OF DELAWARE 101 Garden of Eden Rd., Wilmington, Delaware 19803

Vol. 19, No. 5

Heshvan 17, 5746

November 1, 1985

1

## 1986 Campaign Inaugural To Be Held Nov. 24

### Senator Arlen Specter Featured Speaker



Renee Spiller



Stephen Spiller

Stephen E. Herrmann, 1986 Campaign chairperson, announced that Senator Arlen Specter will be the guest speaker at the 1986 Federation Campaign Inaugural event to be held on Sunday, Nov. 24 at 6:30 p.m. at Buena Vista, Delaware conference and Reception Center.

Stephen and Renee Spiller, chairpersons of the event, stated that Senator Specter, Republican of Pennsylvania, has not only compiled a 100% record on Israel-related issues, but has been outspokenly

active and highly effective in his support. Serving as a senior member of the vital Foreign Operations Appropriations Subcommittee, Senator Specter has been in a unique position to fight for adequate foreign aid levels for Israel and to keep sophisticated U.S. arms from hostile Arab nations. He has been in the forefront of creating programs dealing with missing and abused children. Specter has also been a constant supporter of women's issues as well as a cosponsor of proposals for adequate funding of education and health programs.

The opening event will be one of the major fund raising events of the year. Spouses have been invited to participate.

Key meetings are now being held to insure that the 1986 campaign will be one of the most successful campaigns in the Federation's history.

Arlen Specter has visited Israel five times. Most recently, in August 1984, Specter not only met with Peres and Shamir in Israel, but expressed his views to Egyptian President Mubarak, Jordan's King Hussein, Syria's foreign minister and the Saudi defense minister.

Previously, in September 1982, Specter travelled

(Continued to Page 3)

## Prominent Attorney To Lead Worker Training Campaign Institute Nov. 10

Stephen Herrmann, chairman of the 1986 campaign of the Jewish Federation of Delaware, has planned a Training Institute for all workers of the 1986 campaign on Sunday, Nov. 10 from 9:30 a.m. to 2 p.m. at the Jewish Community Center.

The institute is designed to incorporate the latest techniques of campaigning and to discuss the needs of the Jewish community in Delaware, Israel and throughout the world.

The Training Institute will be lead by: Alan H. Molod, a partner in the law firm of Wolf, Block, Schorr and Solis-Cohen, and a native of Philadelphia. He is a graduate of the Wharton School of the University of Pennsylvania and the Yale University Law School, where he received an LL.B. He attended the London School of Economics, received an LL.M. in Comparative Law from the New York University Law School and also attended the University of Paris Law School.

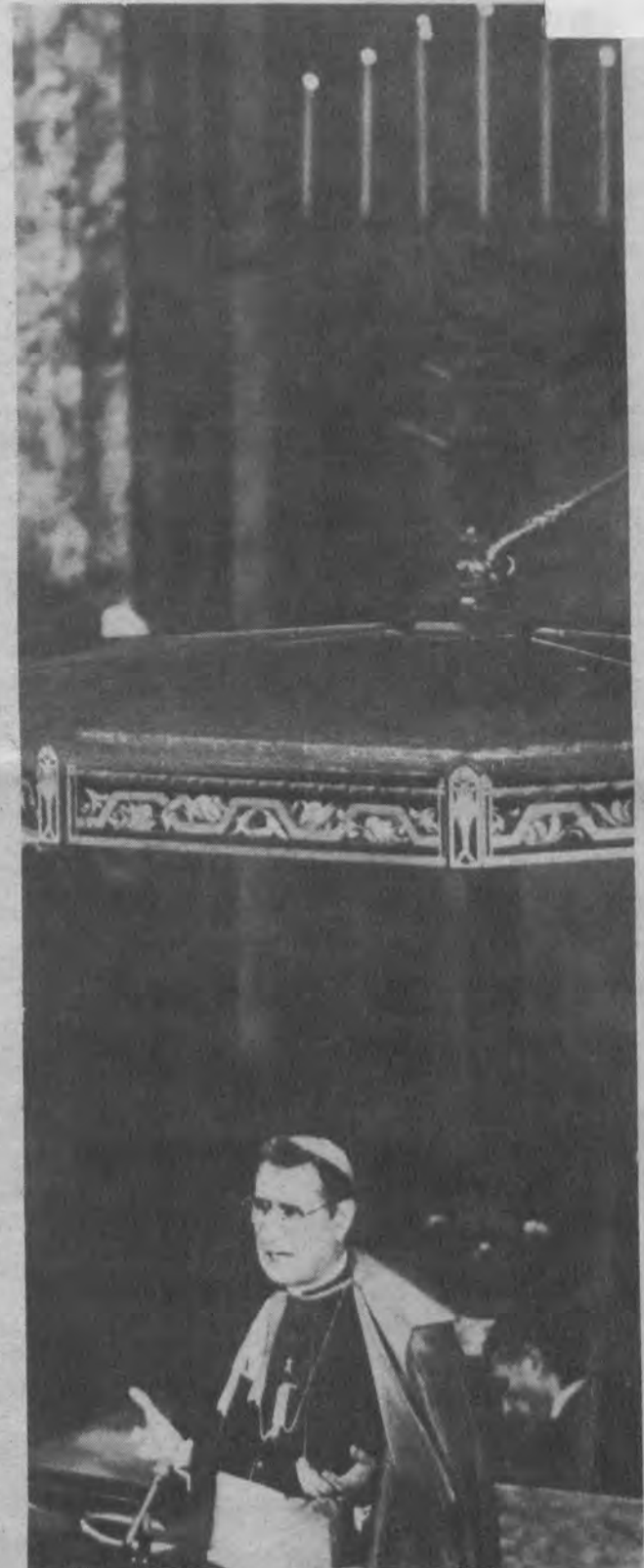
A member of the Philadelphia, Pennsylvania and American Bar Associations, Molod is active in many professional sections and committees and is the author of several publications.

A member of the board of trustees and executive committee of the Federation of Jewish Agencies of Greater Philadelphia, Molod is the treasurer of Federation, serves on several Federation committees, including its Committee on Allocations and Planning, is chairman of Federation's Finance Committee and is past chairman of Federation's Committee on National and Overseas Services. He is a member of the FAJA Campaign Chairman's Council, a vice chairman of the FAJA \$10,000-\$25,000 Division, and is a past chairman of the FAJA Committee on Agency Board Solicitation, a past co-chairman of the FAJA Synagogue Campaign Committee and a past chairman of the FAJA \$2,500-\$5,000 Division.

He has served as president of the Jewish Campus Activities Board, which serves student and faculty needs on 20 campuses in the Philadelphia area, and has served as a vice president of the YM/YWHA, a vice president of the Philadelphia Chapter of the American Jewish Committee, and is a member of the board of the Philadelphia Jewish Archives Center.

He is a member of the board of directors of the Jewish Community Relations Council of Philadelphia, a member of the Soviet Jewry Council of the JCRC, and a member of the Steering Committee of the Philadelphia Interreligious Task Force on Soviet Jewry.

(Continued to Page 5)



ROMAN CATHOLIC LEADER  
ADDRESSES 'NOSTRA AETATE'

NEW YORK CITY - Cardinal John J. O'Connor, Archbishop of New York, speaks to the congregation at Temple Emanu-El in New York on Oct. 20. The occasion was the 20th anniversary of the Vatican declaration of "Nostra Aetate," which renounced anti-Semitism and sought to eradicate the belief that Jews were responsible for the crucifixion of Christ. It was the first time that a Roman Catholic cardinal had spoken in the prominent New York synagogue, and marked an important milestone in Jewish-Christian relations. RNS Photo

### TAX ADVISORY ALERT!

Tax laws will almost certainly change in 1986! Take advantage of the currently available charitable tax deduction!

Contributions to the Jewish Federation can be made this year and credited to your 1986 pledge. A Pledge can be made to the 1986 campaign before or after a contribution is paid. The deduction can then be claimed on your 1985 Tax return and, if the tax rates are reduced, you will receive a more favorable deduction.

GIVE NOW - WAITING UNTIL TOMORROW  
MAY COST YOU MORE!

Mr. & Mrs. Albert Z Goldberg  
1403 New Rd  
Wilmington, DE 19805

## ON THE OTHER HAND N. Even-Or



### The Church With The Magen David

When you see a six-pointed star on the top-most gable of a grand 13th century Gothic church, it's a safe bet that the symbolism is other than the Star of David. It is, that is, unless the church is the famous Franciscan Church of Santa Croce in Florence; and therein lies a tale.

Santa Croce, it seems, was constructed with a plain brick front, and when the church authorities decided about 125 years ago to beautify it with a new marble facade, they announced a competition for architects to submit designs suitable to the importance and grandeur of the ancient edifice. After all, in addition to its religious importance, Santa Croce was where Michelangelo, Galileo and Machiavelli were buried, along with other great figures of Florentine history.

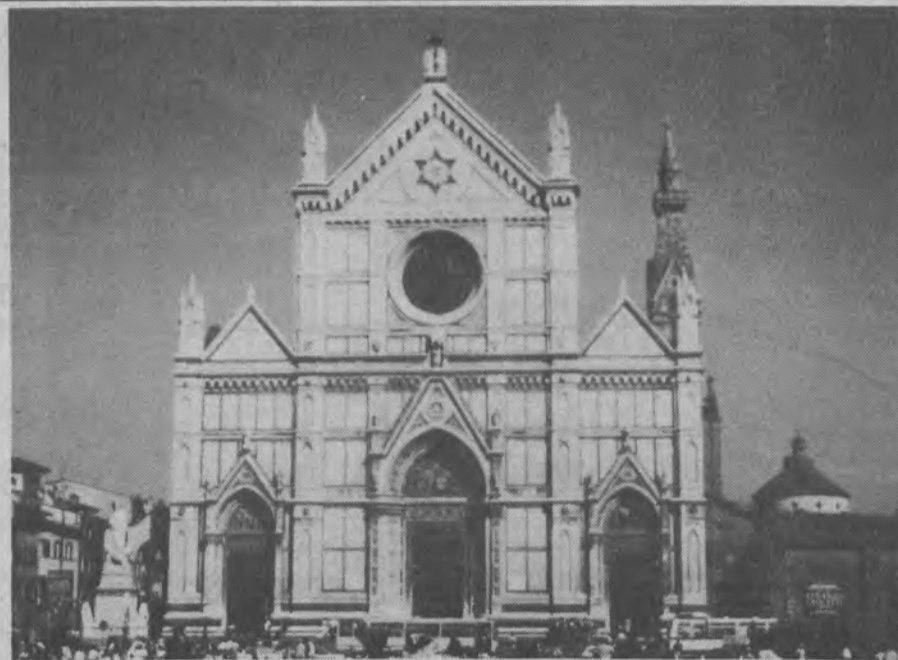
Among the many competitors for the architect's commission was a Jew named Niccolo Matas, and his proposed design won the competition. Apparently none of the judges questioned the *Magen David* shown at the top of the facade, probably because they were unaware at the judging that Matas was a Jew, and because they viewed the star as a symbol of the Madonna. According to information from the WZO office in Florence, Matas's religious affiliation became clear when he said that he would not work on Saturdays. Interestingly enough, the six-pointed star remained in the design and is there today for all to see and wonder about. Whatever

the symbolism, mystical or otherwise, of the star to the people of Florence, it was clearly a *Magen David* to Matas.

What really stirred the pot, though, was Matas's request that he, as architect of the new facade, be buried within the church, along with the other greats. Whether the idea of burying a Jew inside Santa Croce was more of a scandal to the Franciscans or to the Jews of Florence is open to conjecture, but the request was denied anyway. A compromise was proposed: Matas would be buried just outside the church before the center entrance door, where another *Magen David* of imposing size marks the spot of his marble-faced tomb. Maybe he didn't make it right next to Michelangelo, but he came very close.

The only source of information on this fascinating story appears to be Yohanna-Miriam Margolius of the WZO in Florence, since Santa Croce is not listed as a site of Jewish interest in Lightman's "Jewish Travel Guide" or Postal and Abramson's book. Niccolo Matas doesn't even rate a line or two in the *Encyclopedia Judaica*. Maybe the high point of his Jewish career (a pun, if you will) was the *Magen David* at the top of the Church of Santa Croce in Florence.

Another Florentine church of enigmatic Jewish interest is Orsanmichele, on a site which dates back to the 9th century. It is the exterior of the church that is famous, in



The Church of Santa Croce in Florence.

this case, because of the canopied niches containing statues of the patron saints of the various trade and merchant guilds which commissioned the sculptures around the 15th century. Inside the church, however, is a Latin inscription in Hebrew letters which must have a story behind it, but it is one that I have not been able to find; none of the guide books even mention the inscription.

Under a marble sculpture of the Madonna and Child with Saint Anne, is the Latin engraving, EGO SUM LUX MUNDI, "I am the light of the world," written alliteratively in Hebrew letters. Why would this have been written with Hebrew letters? It



A Madonna and Child with Saint Anne which can be found in Orsanmichele in Florence.

was certainly less likely that the 16th century church-goers of Florence would be able to read Hebrew than Latin. Was it, perhaps, a church in which Jews were forced to listen to "conversion-inducing" sermons, as we know was true of other churches in Italy during this period? Nothing I've



The Hebrew inscription at the base of the Madonna and Child with Saint Anne is actually the transliteration of the *Ego sum lux mundi* or I am the light of the world."

located gives a hint of the answer. Even the meticulous Blue Guide for Florence misses this inscription. For now it remains another tantalizing hint of the many dimensions of Jewish life in Renaissance Italy, a life that may have been rewarding for some, but was always tentative and perilous for all.



The marble *Magen David* which marks Niccolo Matas's tomb. Matas is buried just outside the church, before the center entrance door.

### PLEASE NOTE:

In order to publish a *Jewish Voice* close to Hanukkah, the *Voice* which was scheduled for Nov. 15 publication will be published instead on Nov. 25. We apologize for any inconvenience this may cause.

# Nemser Lead Leadership Development Program



Stuart Nemser

The Jewish Federation of Delaware's Leadership Development Program, a program which ensures strong future leadership for our community, will be led this year by Lelaine and Stuart Nemser.

Basically, the major purpose is to create a Leadership Chavurah, bringing together a group of interested, concerned Jewish men and women to acquaint them, through informal discussion sessions, with the major issues and concerns of Jewish life today in order to be prepared for responsible leadership roles.

Topics for the monthly sessions will focus on a wide range of concerns and will be led by experts in various Jewish fields. This will not be a lecture series as each participant will assist in choosing the programs and will have the opportunity to actively participate in this dialog. The program offers a unique opportunity for a learning and sharing experience.

The first session will be held Sunday, Nov. 10 at 7:30 p.m. at the Milton and Hattie Kutz Home, 704 River Road, Bellefonte. A tour of this facility, which is one of the constituent agencies of the Jewish Federation of Delaware, will be offered by Daniel Thurman, executive director of the Kutz Home, starting at 7 p.m.



Lelaine Nemser

"A New Administration - A New View of the Community" will be the topic discussed by Martin G. Mand, newly elected president of the Jewish Federation of Delaware, at the beginning of the evening's program. Participants will then explore their own commitment to and responsibility for involvement in the Jewish community and will choose the topics which will determine the leadership development program this year.

The Nemser's are graduates of the Leadership Development Program. Stuart has chaired several campaign divisions, and currently serves on the boards of directors of the Jewish Federation and Gratz Hebrew High School. A marketing research manager for E. I. duPont de Nemours, Inc., he holds a B.S., M.S. and PhD in chemical engineering from M.I.T.

Lelaine Nemser, a graduate of Simmons College and Simmons School of Social Work, serves on the Synagogue and Sisterhood boards at Congregation Beth Emeth. A strong commitment to Hadassah recently culminated in her presidency of the Wilmington Chapter of Hadassah, a position she has held for three years.

Those interested in participating in the Leadership Development Program are asked to call Stuart and Lelaine Nemser at 656-0412.

# Endowment Fund: Letters Of Intent — Promises To The Future

*"As my parents planted for me, so do I plant for my children"*

*Talmud Ta'anit*

Gerald S. Frim, Esq.  
JFD Endowment Director

The Jewish Community of Delaware Endowment Fund is our community's insurance for the future. It will meet emergencies, cope with important new programs which cannot be budgeted for, provide a cushion to the Federation in a bad campaign year, and will insure continuity of our community's institutions. The growing needs of the Kutz Home, the JCC Campsite and Albert Einstein Academy are examples of this.

There are a number of ways to support the Endowment Fund. These include bequests, lifetime gifts, remainder trusts, life insurance, and much more. One way to show a commitment to our community's future and an intent to support it through the Endowment Fund is by signing a **LETTER OF INTENT**.

The Letter of Intent is neither a legal document nor a legally binding pledge. It is rather a promise, a moral

commitment. It is hoped that the signer will take it seriously and will promptly act to make a commitment to the Endowment Fund, either through a bequest in his or her Will or through a lifetime gift. There is, however, no legal obligation to do so.

Everyone in Delaware's Jewish community has an interest in some Jewish institution or cause. Everyone can benefit from the tax savings inherent in an Endowment gift. If one has any interest at all in perpetuating his or her charitable interests and saving on taxes, it is appropriate to sign a Letter of Intent to support those interests through the community's Endowment Fund. That is the first step in finding out about Endowment giving and the benefits it offers both to the donor and the community.

Today's issue of the *Jewish Voice* includes a sample Letter of Intent. Please consider signing and returning it to the Endowment Fund. It is your first step to finding out about Endowment giving, and to attaining a bit of immortality, both for yourself and the community. Feel free to call me if you have any questions about Letters of Intent or the Endowment program in general: 478-6200.

## Campaign -

(Continued from Page 1)

to Lebanon and Israel to evaluate the situation there first hand. During that trip he met with President-Elect Bashir Gemayel, who was assassinated just two days later. Specter transmitted a message from Gemayel to then Prime Minister Begin regarding the timing of Israeli-Lebanese negotiations.

In late May and early June, 1983, Arlen visited Israel and Egypt at the invitation of the Philadelphia and Pittsburgh Jewish Federations. At that time he visited settlements in Judea and Samaria, and conferred with Israeli officials on President Reagan's Middle East peace initiative. While in Cairo he met with President Mubarak to discuss a wide range of issues, including the return of Egypt's ambassador to Israel.

In July 1982, Specter's trip to the USSR focused on human rights and strategic arms. He met with "refuseniks" and Soviet officials in Kiev and Moscow, on their emigration policies and denials of human rights (Specter's father emigrated to the United States in 1911 from a small village in Russia).

His personal commitment to human rights has led him to continue to call attention to the intolerable treatment of Soviet, Syrian and Ethiopian Jews.

In 1981 as a freshman senator, he withstood brutal Administration pressure and was one of only 12 Republican senators to vote against the sale of AWACS aircraft and other lethal offensive equipment to Saudi Arabia. Later, when a proposal to sell our latest F-16 fighter bombers and sophisticated Hawk missiles to Jordan was floated, Specter took a leading role in shooting this down. Similarly, when word leaked out of the secret U.S. funding of a Jordanian



Sen. Arlen Specter

strike force, Specter joined with colleagues on the Appropriations Committee in scuttling this plan. In early 1984 when the issue of sending portable Stinger anti-aircraft missiles to Jordan and Saudi-Arabia came up, again Specter was there urging the president and secretary of state to reconsider. After the ill-conceived sales were dropped, 400 Stingers were sent to the Saudis under "emergency" powers, and Specter attacked the shipment on both strategic and legal grounds.

A graduate of the University of Pennsylvania and the Yale Law School, Specter has earned the respect of his Senate colleagues for his ability to analyze complex legislative issues. As a moderate, progressive Republican, Specter is viewed as a rising star in the Senate. His considerable abilities and personal commitment should serve the American Jewish community and the nation well in the years ahead.

**Tuesday, Nov. 19, 1985**  
**A National Day of Solidarity in Support of Soviet Jews**

on the occasion of  
The Summit Conference between  
President Reagan & Soviet Premier Gorbachev

**A Brief Ecumenical Service**

will be held at 11:30 a.m.

**Brandywine Park**

**18th & Baynard Blvd., Wilmington, DE**

across from Congregation Beth Shalom

Participants:

Governor Michael N. Castle

Rabbi Peter Grumbacher, Congregation Beth Emeth

Sister Jeanne Cashman, Director, Office of Justice & Peace,

Catholic Diocese of Wilmington

Sponsored by:

Task Force on Soviet Jewry, Jewish Community Relations Committee

Jewish Federation of Delaware

The community is encouraged to attend.

## Guest Editorial

# One Heart, One People... Remember Soviet Jewry

By STANLEY BALICK  
Chairman Soviet Jewry Task Force

Jewish Community Relations Council of  
the Jewish Federation of Delaware

Is it any wonder after a fortnight of savage attacks on Israelis and Jews in Cyprus, Sinai, Tunisia, Barcelona, and on a tourist ship at sea, that thinking Jews band together in order to preserve the sanctity of their identity and the survival of their people?

The byword of the 1982 Hadassah convention in Israel, "one heart, one people" has never been more apropos. During these difficult times, when Jews are threatened from all directions, and violence rears its ugly head with bloody accuracy, why is it that so many American Jews take for granted the wonderful privileges and liberties we enjoy in this great country? What will it take to move us into action in support of our brethren who are under attack throughout the world? What more needs to happen to convince us of the reality of the continued threat to ourselves and our loved ones?

Recently we read about the Israeli families camping in the Sinai who were shot by an Egyptian soldier for no apparent reason. Of the seven who died, four who bled to death would have survived had they been given prompt, competent medical care. The Egyptians did not raise a finger to provide that care—and they denied Israeli officials the opportunity to provide it. Among those four who bled to death were children.

Terrorism knows no territorial boundaries! Sadly, I believe it is only a matter of time before its presence is felt in this country also. Just recently, staff of the Jewish Federation were warned by National to take more strict security measures in light of the real possibility of a terrorist strike in this country — even in the suburbs of Wilmington, Delaware.

We, as Jews, must acknowledge our identity, take pride in who we are, and responsibility for our lives and those of our loved ones. Thinking about it, talking about it, and making contributions to worthy causes is just not enough. We must be prepared to make personal sacrifices of our time and talents to insure our self preservation. Not the least important of these vital causes are those millions of unfortunate Jews who happened to have been born in the Soviet Union, particularly those courageous ones among them who have applied to emigrate to Israel. These brave souls, at a minimum, have lost their jobs, been denied their freedom, been assaulted, isolated, and who knows what else. What can the leadership of the Jewish community do to appeal to you to reach deep down within yourselves to bring to the surface that special feeling required to get you to commit yourself?

Please, take two steps back from the daily routine of your busy American lifestyle, and remember from where we all came. Contemplate who you are! Thank back to your parents who emigrated from the Soviet Union and other far off places to the freedom of the United States. Consider what your life would be like today if your Russian emigrant parents had been denied the right to emigrate. Imagine your children's lives as captives in the Soviet Union under a tyrannical government that denies human rights to anyone who stands in its path, let alone the Jews. Determine what your priorities are in life. How much do you give back for all that you get by living in this country?

Please, today, call the committee of your choice, or the Jewish Federation, and get information about the task forces and committees in which you might be interested. History has taught us too well that if we do not help ourselves, there are not many who will extend themselves to help us.

You will have an opportunity on Tuesday, Nov. 19, the day President Reagan and Soviet Premier Gorbachev begin their Summit meeting in Geneva, to demonstrate here in your own community your concern for the welfare of our Soviet Jews. A brief ecumenical service will be held at 11:30 a.m. in Brandywine Park across from Congregation Beth Shalom on this Day of Solidarity in Support of Soviet Jews. Begin actually to participate on behalf of Jews in need. Be there.

## ISRAEL ISSUES Ze'ev Golin



### The Terrorists Take Aim

RISHON-LE-ZION — How is a country affected by a wave of terror?

In recent months, Israel has endured a growing number of murderous attacks on her citizens. Terrorists, operating from sanctuaries such as Tunisia and Jordan, have been turned loose on our soil. An example of course, is the terrorist gang only recently apprehended by our defense forces, after roaming the country for over a year.

The terrorists' initial aim in their quest to destroy us is to undermine our confidence in our internal security. They want us to feel we cannot move freely outside of our own homes. In this way, they hope to disrupt the normal life of our country.

Next, the terrorists want to demonstrate that we are not free to respond to terrorist outrages. They hope that Israel will be forced to choose between allowing terrorists to act without fear of reprisal, or face damaging economic and political boycotts by our so-called allies. The response to our raid on the PLO headquarters in Tunis - notably Reagan's flip-flop and the Common Market

sanctions - can only have encouraged our enemies.

It is also apparent that the terrorists wish to push Israel to self-destructive political extremes. Our enemies welcome, rather than fear Kahanism. Kahanism-made law would have the same effect on Israel as apartheid has had on South Africa. Israel would be totally isolated. Every kind of moral, political, and economic force would be used to destroy her.

We feel more isolated than ever in our battle against terrorism. The world no longer has a sense of moral obligation toward our survival. Even among our allies, it is an unspoken premise that our existence is a barrier to their economic and political interests. As anti-Israel prejudice mounts, the terrorists feel ever more confident. No wonder they're getting bolder.

Will Israel be forced to abandon the fight against terrorism before she roots out the cancer? How severe would be the resulting strain on our political, economic, and social fabric? How much more must we endure in order to outlast our foes?

## Sabbath Candlelighting Times

Nov. 1	4:39
Nov. 8	4:32
Nov. 15	4:25
Nov. 22	4:20
Nov. 29	4:17

## The Jewish Voice

Published semimonthly, and monthly in July and August, by the Jewish Federation of Delaware.

Editorial opinions expressed in this newspaper are those of the newspaper and not those of any individual. Signed editorials do not necessarily represent the view of the newspaper but rather express the view of the writer.

Jewish Federation of Delaware, 101 Garden of Eden Road  
Wilmington, De. 19803. (302) 478-6200.

Subscription Price: \$5.00

Circulation 3,000

Mailed to subscribers who are contributors to  
Jewish Federation of Delaware  
Second Class Postage paid at Wilm., Del.



Edwin Golin, Chairman  
Karen G. Moss, Editor

Devara Goodman, Advertising Manager  
Robert N. Kerbel, Executive Vice President

No material will be accepted by The Jewish Voice which is considered against the best interests of the Jewish community.

### DEADLINE

The next issue of The Jewish Voice will be published MONDAY, NOV. 25. The deadline for stories and photos is noon, WEDNESDAY, NOV. 13. Material should be sent or brought to the Jewish Voice office at the Jewish Federation of Delaware, 101 Garden of Eden Rd., Wilmington, 19803. (302) 478-6200. All articles must be typed, double spaced.

### THE JEWISH VOICE (USPS-704160)

Second class postage paid at Wilmington, De. Published semi-monthly, and monthly in July and August, by the Jewish Federation of Delaware, 101 Garden of Eden Rd., Wilmington, De., 19803. Subscription price \$5.00. Mailed to subscribers who are contributors to the Jewish Federation of Delaware. POSTMASTER: Send address changes to The Jewish Voice, 101 Garden of Eden Rd., Wilmington, De. 19803. (302) 478-6200.

# All the nachas fit to print

## Mazel Tov

Nancy Ferst, daughter of Marge and Sydney Balick, is the recipient of the Young Leadership Award by the Jewish Federation of Philadelphia.

## Birth

Pat Spiegel Chalpin just became the grandmother of a little girl born to Nancy and Carl Rosenstock of Ellenville, N.Y.

## Engagement

Carol Lapidos, daughter of Millie and Morry Lapidos, is engaged to Jeff Spaulding of Ann Arbor, Mich.



SINGING HELP

PITTSBURGH, PA. — Lee Kweller, 13, works at his computer with the help of Dr. John Eulenberg, left, in his Pittsburgh apartment recently. Lee suffers from cerebral palsy and cannot speak, but with the help of a voice synthesizer attached to the computer, he can sing and talk in English and Hebrew, so he can participate in his bar mitzvah scheduled for November 1985. RNS Photo

**CASH**  
Pay Telephones. Locations Available. Minimum Investment \$2,000.00.  
**Call 215-592-4330**

**IF YOU HAVE SOLD YOUR HOME AND TAKEN BACK A MORTGAGE, WE WILL BUY THAT MORTGAGE FOR CASH. CALL: 454-1416. INVESTMENT MANAGEMENT ASSOCIATES.**

**Support Our Advertisers**

**EVERYTHING NICE GIFT SHOPPE**  
Cards, Gifts, 14K Gold Jewelry, Jewelry Repairs, Perfume and Gourmet Candy  
Instead of wine as a Hostess Gift, try Imprinted Cocktail Napkins. We also make up Candy Gift Packages.  
2090 Naamans Road  
F&N Shopping Village  
Wilmington, DE 19810  
(302) 475-7484

## Crossword Puzzle

For Jewish Book Month — Nov. 7—Dec. 7, 1985

Created for the JWB Jewish Book Council  
by Joy L. Wouk

(Solution: Next Issue) © 1985 - JWB Jewish Book Council

### ACROSS

- 1 Player Gehrig's need
- 5 Attention-getter
- 9 Hebrew months
- 14 Ancient Hebrew lyre
- 15 Seltzer cousin
- 16 Asia Minor region
- 17 Annual event
- 20 Of a region
- 21 Father of Ahab, builder of Samaria
- 22 Projectionist's need
- 23 Infrequently
- 25 Bank abbr.
- 27 Like Solomon
- 30 American rabbi-author, Robert Eban
- 39 Ending for hand or win
- 41 Dutch cheese
- 42 Founder of Reconstructionism
- 45 At right angles to ship's length
- 46 Opp. of pub.
- 47 Threat word
- 48 Hewrote "The Wall"
- 50 Thick slice
- 52 Yod follower
- 54 Deli treat
- 59 O'Neill's "Desire Under the ..."
- 63 Come in last
- 66 Historian Salo
- 67 Appellation for our brethren
- 70 "Carolina Israelite" Golden
- 71 Ethiopian lake, source of
- 72 To be, to Trajan
- 73 Nautical greetings
- 74 Test
- 75 Malicious look

### DOWN

- 1 Goya subjects
- 2 Grenoble's river
- 3 Bather's need
- 4 Three tone chord
- 5 Jerusalem sight 586 B.C.E.

### 6 Vagrant

- 7 Ancient kingdom south of the Dead Sea
- 8 New Zealand native
- 9 David's was good
- 10 Entry
- 11 Diarist Frank
- 12 Bar Mitzvah, e.g.
- 13 Comedian Mort
- 18 "...to anger and abounding in kindness"
- 19 Title for 21 Across
- 24 Varied: abbr.
- 26 Robe for Herod
- 28 Daytime TV program (slang)

### 29 Moslem princes

- 31 Delilah used it on Samson
- 32 Like the third son in the Haggadah
- 33 Cantor and Kaminska
- 34 Rational
- 35 Oriental nurse
- 36 Jewish grandmother: var.
- 37 Rabbit or Fox of J. C. Harris
- 38 Huxtable and Rehan
- 40 Author Ludwig
- 43 Israeli valley
- 44 Russian fermented rye drink

### 49 An Elihu, college patron

- 51 Ruth or Zaharias
- 53 American organist, composer 1853-1937
- 55 Tag
- 56 Lost a lap
- 57 Largest deer
- 58 Scribe, at times
- 59 Hebrew bushel
- 60 Mother of Reuben and Simeon
- 61 Martyred Italian Prime Minister
- 62 Nimble
- 64 Tunisian seaport
- 65 Sicilian volcano
- 68 Scheldt River feeder
- 69 Son of Noah

1	2	3	4	5	6	7	8	9	10	11	12	13	
14				15				16					
17				18				19					
20					21				22				
23				24		25		26					
			27		28	29		30		31	32	33	34
35	36	37	38		39			40		41			
42				43				44					
45					46					47			
48				49		50				51			
				52		53		54		55	56	57	58
59	60	61	62		63		64	65		66			
67				68				69					
70						71				72			
73						74						75	

Answers on page 16.

## Campaign Institute -

(Continued from Page 1)

Nationally, Molod is a vice president of HIAS, chairman of the North American Jewish Students Appeal, a member of the National Executive Council of the American Jewish Committee, a member of the board of directors and executive committee of trustees of the Jewish Publication Society of America, a member of the

board of directors of the National Institute on the Holocaust, a vice chairman of the Large City Budgeting Conference of the Council of Jewish Federations and a past member of the UJA National Young Leadership Cabinet and the executive committee of the National Committee on Leadership Development of the Council of Jewish Federations.

## COME TO THE NEW CASTLE FARMERS MARKET

Place Your Special Thanksgiving Orders

- \*Lancaster County's Finest and Freshest Turkeys, Ducks and Geese
- \*A Huge Selection of The Best Cheeses
- \*Pick Your Own Beautiful, Fresh Produce
- \*Delicious Fresh Baked, Finest Quality Baked Goods

## NEW CASTLE FARMERS MARKET

(Market Open Wed. Before Thanksgiving)

Rt. 13 Across From Wilmington Airport  
Fri.-Sat. 10-10; Sun. 10-6

# Journalist Bill Frank-

## Bill Frank At 80

By  
RABBI LEONARD GEWIRTZ  
Judah ben Tema said: ... "at eighty one achieves strength" (*Gevurah*) *Ethics of the Fathers* V:24)

Bill has been blessed with *gevurah*, that unique "strength" to pursue and fight for truth. He is a disciple of the "muckraker" school of journalism of Ida Tarbel, Lincoln Steffens and the reporters who wrote for the old *N.Y. World-Telegram*.

When I arrived in Wilmington in 1947, Bill Frank came to talk to me, the "young rabbi" in his Adas Kodesch. Frank had come to Wilmington with his widowed mother, who married a religious man here. His new father immediately sent the young Bill Frank to *cheder*, so that he would grow up to be a "Yeed" and Bill was bar mitzvah in Adas Kodesch at 6th & French. To him, that was the ideal synagogue building: high ceiling with tall stained glass windows, awe inspiring *Ahron Kodesh* on an elevated *Bimah*. None of the local contemporary

synagogues and temples seemed to appeal to him. He came to our *sukkah* on occasion, and once Bill poured out his heart, his *Yiddish hartz*, to me.

His daughter who was studying at the University of Delaware, had many non-Jewish friends. In her senior year she began "to go steady" with a non-Jewish boy. To Bill's own amazement he discovered that he did not want her to marry a non-Jewish man. He found himself praying at night, that this "connection" would dissolve. And he said it, "*Gott hot geholfen*," and she went to N.Y. to work in the theater and a musical comedy. Working in this musical, she met a handsome son of a *chazzan* from a distinguished Sefardi family. Bill began to believe in *bashert* when they fell in love and married in a beautiful Orthodox synagogue wedding. In time they were blessed with children and Bill Frank has *ainiklach*, who studied in a day school, learned *Chumash* and *Tanach*, and *Ivrit*. He

knows that there is Jewish continuity from his loins.

Bill has upset traditional thinking Jews in Wilmington. Once he wrote in a Purim piece in the *Jewish Voice* that there is nothing objectionable about mixed marriages. Queen Esther, he said, married the *goy* Achash verosh, and she saved the Jewish people. He could have said also that Abraham married Sarah (not Jewish), and Isaac married Rebecca (not Jewish.) There were many letters to the editor on that issue.

I recalled how Frank felt secure that his daughter had married a *chazzan's* son and felt he was playing games with our community.

In his writing about Israel in the *Wilmington Morning News*, he usually wrote glowingly with *hartz*. But sometimes he was critical. From his ingrained "muckraking," aproach, he thought that criticism of Israel was healthy, and that it made his praise of Israel more credible, since he proved that he is honest and forthright.



Bill Frank

"Any controversy which is in the name of Heaven (out of sincere motive) is destined to result in something permanent; any controversy which is not in the name of Heaven will never result in anything permanent." (*Ethics of the Fathers* V:20)

No-doubt Mr. Frank has stirred-up "controversy"

both in the Jewish community and in the non-Jewish community, but it was *l'shem shamayim*, out of sincere motive. For this he will always be remembered. Having achieved *gevurah*, may be blessed to go from "strength to strength" (Psalm 84:8) Amen.

If your sign, parking lot,  
store, office, warehouse,  
or shopping mall...



lighting has gone limp...  
CALL 656-9933  
Mattes Lighting Service

## Choose the Best in Home Health Care Choose VNA

When you need home health care you want the best.

**Choose VNA**... the organization with over sixty years' experience in providing home health care of the highest standards.

- Nursing
- Therapy
- Medical/Social Work
- Nutrition
- Home Health Aides
- Home Helpers

**Choose the Best! Choose VNA!**



For more information  
in Wilmington call 658-  
5205, in Newark call  
366-8773, in Kent  
County call 422-2010  
and in Sussex County  
call 856-3886  
(toll-free).

**Visiting  
Nurse  
Association  
of Delaware**

# Zev Amiti-Turns 80

## Personal Reminiscences

By ZEV AMITI

Once upon a time, it may have been in 1910 or 1911, a little boy, Velvele by name, got off the Pennsylvania Railroad train at Front and King Streets, Wilmington, Del., and walked over to No. 9 East Front St., (which has now disappeared) with his older sister, Pauline, and his older brother, Benjamin (may they sleep in eternal peace).

They had come in from the east side of New York where Velvele was born and for several years was housed in the old Hebrew Orphan Asylum. But now, he was being reunited with his mother and met his step father and there for the next two decades, this was the center of Velvele's life — a Jewish youth living in the midst of a Jewish section of Wilmington, belonging only to Jewish organizations, running around only with Jewish friends, involved in the orthodoxy of the Jewish faith, attending the Orthodox synagogue, Adas Kodesch, at Sixth and French Streets, for *cheder* four afternoons a week, attending Friday night services, occasionally Saturday morning services, quite often services on week day mornings and of course, almost all the holidays, particularly Rosh Hashanah and Yom Kippur.

In *cheder*, enrolled when he was a mere 7 years old, he learned the details of Hebrew grammar and undertook the task of translating portions of the *Tanach* from Hebrew into English, and learned about the ritual services as practised in the synagogue.

But all was not pleasant in the synagogue for this *yankele*. First, there was the *shamus*, a man named Shore, who delighted in pushing youngsters around and

discovered he could do this until they were bar mitzvah.

Then there was Rabbi Rezits, a holy man who always seemed to be so learned and sanctified, a youngster like Velvele, didn't dare to have a friendly chat about problems a little Jewish boy didn't dare discuss with his strict parents.

And topping every one was the most important layman in the Adas Kodesch, Louis Topkis, the firm *balaboos* who seemed to own, run, order, and direct the entire synagogue.

Velvele had an idea and was sure of it that Louis Topkis, not the rabbi nor Chazzan Cohen determined when services were to start.

Mr. Topkis had a way of yelling at and threatening unruly youngsters so much that they really feared him.

For years, Velvele's world included West Second Street, from Market to about West; No. 6 School on Walnut Street above Third, and No. 1 School on French Street, across from Adas Kodesch, and of course there was the Y.M.H.A. at Third and King Streets with its dramas, basketball, debates and Young Judean activities.

This and only this was his real world. His mother and step father operated a strictly kosher home. If there was to be chicken for a Friday supper, his mother would go into the back yard of No. 9 East Front St., grab a live chicken, tie its legs and turn it over to Velvele along with 15 cents and send him on to the *shochet* on West Second Street just beyond Orange.

So Velvele would stride over to the *shochet's* den, down a long alley between houses and into a little court yard where the *shochet* took the helpless chicken, tore some feathers from its throat,

mumbled a prayer and slit the throat and then dumped the bird, head first, into a tin funnel so it could bleed for a while.

Velvele used to say he could never really watch this slaughter; so he would look the other way when the time came for the slit across the throat.

After about five minutes, the *shochet* took the chicken, wrapped it in newspaper and handed it to Velvele who then made the mad dash for his home. But almost always, Velvele used to say, the chicken's legs still moved and scared the life out of the boy.

Oh yes, Velvele's bar mitzvah. As he approached the time, Shamus Shore took over the task of preparing the boy for the great ordeal; of course, Velvele's step father was employed for the occasion.

Ever attend the lavish bar mitzvah parties today? Music, champagne cocktails, dancing, etc. This was unheard of in the era of Velvele's youth. Yes, he went through the ceremony one Shabbat in Adas Kodesch. Only a handful of worshippers were on hand. His mother and other friends were in the balcony.

The little boy shook at first but gained his control when he delivered the usual "Today I am a man" speech in which he thanks his mother, step-father and of course, Shamus Shore who beamed with satisfaction.

Velvele used to boast that even Louis Topkis (may he rest in eternal peace) shook his hands.

So there was the bar mitzvah party but where? In the basement of the synagogue right after Shabbat services and what did his proud mother serve? Wine, schnapps, some strudel and cake.

Yes, Velvele lived in an absolutely kosher home. He was never taken to a restaurant, not even the Jewish restaurant on West Second Street. So one day, guess what? Velvele saved up 10

cents and sneaked into the *goyishe* New York restaurant on Market Street above Fourth and ordered a slice of lemon meringue pie — of course not kosher.

Then he walked down to No. 9 East Front St., and started through the alley between No. 7 and No. 9, intending to steal upstairs to his room where he could devour his first bit of *traife* in his young life, but, again, guess what?

He heard a voice or he swore he heard a voice,

"Velvele, Velvele, what are you doing? Planning to taint your mother's home behind her back? Shame, shame and more shame, Velvele!"

Well, that scared the life out of the kid. So he gobbled the slice of lemon meringue pie in a dreadful hurry and then entered his home, still afraid of being chastised by the holy spirit who looked after No. 9 East Front St.

Oh yes, I must tell you about the time, Velvele in-

dulged in arrogance for which he later said he was ashamed.

Soon after he was bar mitzvah, he was out on King Street, under the railroad tracks, playing ball with friends.

It so happened that at that time, a Jewish man on East Front Street and his family was getting ready to hold *shiva* but they lacked a *minyan* by one. Velvele's mother proudly said his *boychick*, now an adult (?) would fill out the *minyan*.

So some one went over to where Velvele was playing ball and told him he was wanted at this certain address.

As Velvele told me,

"I knew they couldn't start *shiva* until I arrived. I felt very important. So I walked over slowly, very slowly, just to show them how much they depended on me. Years later, as I thought of this, I felt like a louse. A dirty trick.

## Bill Frank Visits Israel

*Editor's Note: Bill Frank, or Zev Amiti as he is known to Jewish Voice readers, has written countless articles of Jewish interest for the Voice as well as the News Journal papers. We thought Voice readers might be interested in reading an excerpt from an article written by Mr. Frank for the Wilmington Morning News over 25 years ago. After returning from Israel, he spoke to 27 Jewish and non-Jewish clubs, organizations, churches and synagogues.*

She was greeted by several officials of the town and an outburst of applause by town's people who were waiting at the Eilat airport.

I was greeted by Ludwig, a guide for the Israeli Office of Information. He had a .45 revolver slung over his shoulder, and a belt studded with bullets.

Much as I admire Mrs. Roosevelt, I must say this was much more exciting — to have an armed guide who is to take me through miles of the Negev desert.

After Ludwig and I became superficially acquainted, I asked, "Do you always go armed?"

Ludwig: "Whenever I travel through the desert. You can never tell what's liable to happen."

EILAT-ON-THE-RED-SEA, April 2, 1959.—Mrs. Eleanor Roosevelt and I arrived at this fabulous frontier town at the same time and on the same plane.

### ENJOY ICE SKATING

Starting Fri., Nov. 8 - 7:30 p.m.

#### Sessions

Fri. 7:30-10:30 p.m.  
Sat. 4-6, 8-10:30 p.m.  
Sun. 3:15-5:15 p.m.  
Group Lessons  
Fri. 7:30 p.m.  
Sat. 3 & 3:30 p.m.  
Sat. 2:15 & 2:45 p.m.

Start  
Nov. 8, 9, 10



Pick Your Day

5 Weeks - Lessons, Skates & Skating  
Age 4 to Teens & Adults  
Only \$29<sup>00</sup>

Register Now 656-5005  
Skating Club of Wilmington  
Carruthers Lane, off Weldin Rd.

cookware & utensils, plus  
a healthy dash of how-to!  
**creative cooking**  
christiana mall 366-7484  
branmar plaza 475-0390

### NORTH EAST AUCTION GALLERIE & FARMERS MARKET

U.S. Route 40, North East, MD.

"TRI STATES LARGEST & FINEST"

ESTATES - LIQUIDATIONS - HOUSEHOLD  
**R.C. BURKHEIMER & ASSOC.**

Realtors - Auctioneers - Appraisers

302-575-1881

301-287-5588

## Beth Shalom Religious School

### PRE-SCHOOL LUNCH AND LEARN

It's not too late to register!! Congregation Beth Shalom is again offering a Jewish Awareness program for pre-school children on Thursdays, 12-1 p.m., at the synagogue.

This program open to the entire community, invites all pre-schoolers, including kindergarteners, to come to Beth Shalom.

Children are asked to bring a dairy lunch and Beth Shalom will provide juice and a treat. Following lunch with their friends, the children will

be exposed to such Jewish learning experiences as storytelling, songs, dance, games, filmstrips and videotapes.

We invite your participation. Please call the synagogue office, 654-4462.

### SCHOOL POLICY ON INCLEMENT WEATHER

School closings because of inclement weather will be announced on WDEL, WAMS and WILM by 2 p.m. weekdays and by 9 a.m. on Sunday mornings.

The decision whether to hold classes will be based on weather conditions just prior

to the opening of Hebrew school. Although public schools close in the morning because of bad weather, we have found that often times as the day progresses, conditions improve. Of course, the reverse can also occur. At these times, our school will be closed even though weather conditions in the morning permitted the public schools to open.

Please be assured, that in any decision, the safety of our children is of primary concern.

\*\*\*\*\*

### KULANU

On Sunday, Oct. 27, the students in our Midrasha Department participated in a community-wide program, funded in part by Jewish Federation of Delaware, for all Jewish teenagers. The program, "Drinking, Drugs and Driving" was held at Temple Beth El in Newark.

As an introduction to the program, the teenagers viewed the film, "Epidemic," broke into smaller groups for discussion, listened to a panel of speakers consisting of a Maryland State Police Of-

ficer, Dr. Michael Norman and Rabbi Ira Schiffer. The students then shared what they had learned and joined together for lunch.

The program was informative, thought provoking and initiated a great deal of response and concern from our students.

## Beth Emeth Religious School

### PRE-SCHOOL PROGRAMS

Beth Emeth Religious School is again offering a series of four programs for pre-schoolers and their parents. The first program of the year was a Shabbat hour on Friday, Oct. 25. The children met with Suzanne Paul, director of education, for an hour that included baking Shabbat challah and making a kiddush cup as well as the lighting of candles and singing the Kiddush. During this hour, the parents met with Rabbi Grumbacher and had a chance to increase their understanding of Shabbat as Shabbat observances were discussed. There will be three more programs this year: Hanukkah hour on Dec. 10; Purim parade on March 18, 1986; and a birthday party for Israel on May 14, 1986. All programs meet from 1-2 p.m. The programs are open to all children ages 3 to 5 and to their parents. Call the religious school office at 762-5858 for further information or to register.

### BOOK FAIR

A book fair for Jewish Book Month will be held at Beth Emeth on Sunday, Nov. 24, 1985, from 9:15 a.m. until 1 p.m. The book fair will feature books of Jewish interest with many low-priced

paperbacks available. The books will be excellent choices for Hanukkah gifts and for winter reading. Kids Paperbacks, of Independence Mall, is providing the books; and Marcia Sloan, our library coordinator, is in charge of the book fair. A highlight of the book fair will be a storytelling session by Peninah Schram, a noted Jewish storyteller and authority on the art of telling stories.

### FACULTY

Beth Emeth Religious School welcomed five new faculty members as school opened this year. Ronit Keret will be teaching a Dalet class this year, and Nitza Rich will be Hebrew resource and reading teacher. Both these women are wonderful additions to the Hebrew faculty. The Sunday School Department was delighted to have Pat Simon return to sixth grade after a year's absence. Jody Harris, a former cadet aide at Beth Emeth and student in the school, is now a teacher of the fourth grade. Mardian Berman will teach an additional section of grade two on Sundays. All faculty members will be honored at a Teacher Recognition Shabbat on Dec. 13, at 8 p.m.

## AKSE Religious School

### ALEPH CLASS CONSECRATION

Students of Faith Brown's Aleph class at Adas Kodesch Shel Emeth Religious School were consecrated at Friday evening services on Nov. 1 at 7:30 p.m. Each student received a miniature Torah and a slice of honey cake to symbolize the "sweetness" of the study of Torah. The Aleph class presented a consecration message which was meaningful and enjoyable.

Students of the Aleph class are: Jessica Berlin, Shana Berry, Michael Dumin, Jason Golden, Kevin Goldstein, Todd Hochheiser, David Hornadaly, Rochelle Luber, Lisa Sandell, Rayme Schloss, Joshua Shattuck, Dana Snyder, Alan Weisner, Amy Weinstein, and Rachel Weiss.

An Oneg Shabbat in honor of this occasion was hosted by Sisterhood immediately following services.

## CELEBRATE LIFE 24 Hours A Day!



Patent applied for

IT IS HIGH TIME someone came up with this whimsical, meaningful yet practical idea. This hand-crafted acrylic clock comes in two distinctive color combinations to complement virtually any decor: antique gold markings or white markings on a black face. For added luxury, hour, minute and second hands are heavily plated in pure 24-carat gold.

Clock measures 8 x 10, just right as is for the wall (use its built-in hanger) or put it in a standard frame. It can also be a free-standing conversation piece in its matching acrylic stand. The use-it-anywhere, battery-powered quartz motor is extremely accurate (a battery IS included) and it's guaranteed for two years. You get the Chai Time Clock in its own custom gift box which makes it easy to give to someone special. Order yours today... "in time" for the Holidays!

Send:  Gold on Black  White on Black  
Quan  Quan

To: (Please Print) Name \_\_\_\_\_

Street Address \_\_\_\_\_

City, State \_\_\_\_\_ Zip \_\_\_\_\_

Include check for \$47.50 + \$2.00 for insurance/ shipping (total \$49.50) for each Clock ordered (Ohio residents add 6 1/2% sales tax) to CHAI TIME, 1934 Lee Rd., Drawer 18030/DJV, Cleveland Heights, OH 44118. Please allow 4-6 weeks for delivery.

(302) 762-3684

furniture repairs  
in home & office

## a refinishing touch

repairs of nicks, dents & cigarette burns  
specializing in moving damages & ins. claims  
sewing of torn or split seams

604 hillcrest ave.  
michael a. shur wilmington, de 19809

## Laurie B. Jacobs, D.M.D.

Takes pleasure in announcing the opening  
of her office.

Dentistry exclusively for children, teens,  
and the handicapped.

Saturday hours available.

708 Foulk Road  
Wilmington, DE

764-7714





**CULTURAL CARAVAN**

**The Forbes Galleries:  
The Faberge Egg Collection -  
New York  
Thursday, Dec. 5  
Departure 8 a.m. - Return 7:30 p.m.  
\$25/M, - \$50/NM**

The Forbes Galleries at 12th and Fifth Ave. houses the largest collection of jeweled Easter eggs in the world. The history of this collection will be given in a brief lecture on the bus to New York.

A one hour tour of the Galleries will take place upon arrival in New York at 11:15 a.m. At 12:30 the bus will depart for uptown "wheels only," where you can spend the afternoon on your own...or, if you would like to visit the Metropolitan Museum of Art, the bus will take you there. We will leave the city at 5 p.m.

**VOLUNTEERS  
WANTED!**

**Who?**

10th through 12th graders.

**What?**

To help out in the After School Childcare program.

**Where?**

JCC Youth Lounge.

**When?**

Mondays through Fridays 3 - 5:30 p.m. (1-5 days/week).

**Why?**

For FUN\* and future summer 1986 employment possibilities.

\*Weekly activities include swim, gym, arts n' crafts, etc.

For more information, contact Arlene Bowman, Susan Strauss, or Helena Brodsky at 478-5660, ext. 229.



The JCC is a constituent agency of the Jewish Federation of Delaware and a member agency of the United Way of Delaware.

**⌘ CULTURES AND CONFLICT**

A film and discussion series depicting struggles of varying human values, dealing with religious, philosophical and cultural differences.

Dr. Norbert Samuelson, the very popular speaker of last summer's "Jew In the Motion Picture" series, will introduce and lead the discussion following each film.

**All programs are on Wednesday evenings at 7:30 p.m., at the Jewish Community Center.**

Nov. 6: "Yiddle With His Fiddle," is the first Yiddish film to be made in Poland (1937) and stars Molly Picon in her first Yiddish film feature.

Nov. 13: "Sallah," starring Haym Topol, is an Israeli film about an Oriental Jew who arrives with his wife and seven children to begin a new life in Israel and his struggle with the bureaucracy.

Nov. 20: "The Pawnbroker" stars Rod Steiger as a struggling pawnbroker in Harlem who goes through life like a zombie as a result of his experiences in a concentration camp. This Sidney Lumet directed film gave Steiger an Oscar nomination.

Dec. 4: "The Wooden Gun" is set in the tense political atmosphere of modern Israel of the 1950s, viewing strife between the political left and right, focusing on two rival gangs in Tel Aviv.

Dec. 18: "Daniel," based on *The Book of Daniel* by E.L. Doctorow, is a personal look at the political left and right in America. It is the story of Daniel Isaacson whose parents were executed for conspiring to steal atomic secrets for Russia.

Jan. 8: "A Secret Space" shows struggle with religion in America as a 12-year-old boy, who has grown up in a liberal modern atmosphere suddenly "finds religion" among the congregants of a small unpretentious synagogue.

**"CULTURES AND CONFLICT" IS OPEN TO THE COMMUNITY. THERE IS NO FEE. PLEASE REGISTER IN ADVANCE BY CALLING THE JEWISH COMMUNITY CENTER, 478-5660.**

This series is funded in part by a grant from the Delaware Humanities Forum, a state program of The National Endowment for the Humanities.



**ART GALLERY  
WILLIAM RADEBAUGH:  
ASSEMBLAGE AND COLLAGE**

The Jewish Community Center Art Committee presents: works by William Radebaugh: Assemblage and Collage, 1985. The community is cordially invited to attend an opening of his works on Sunday Nov. 3, from 2 to 4 p.m. at the Center, refreshments will be served; the opening is free and is open to the public. The show continues through Nov. 25.

Bill Radebaugh is a marvelously inventive man who started putting things together for his own amusement and continued on to success starting with his initial sell-out show in 1972, whose works have been snapped up by private collectors here and abroad.

Radebaugh was commissioned by Hercules, Inc. to create an assemblage for its new building, for the new hospital at Christiana and the DuPont Company.

**LUCKY 100! THIS MAY BE YOUR YEAR!**



**THE JCC  
INVITES YOU  
TO BE ONE IN  
100 PEOPLE TO  
CONTRIBUTE  
\$100 AND TAKE  
A CHANCE ON A  
GRAND PRIZE  
OF \$5,000.**

**DRAWING  
TO BE  
HELD AT  
AN  
EVENING  
OF  
ELEGANCE  
NEW  
YEAR'S  
EVE  
1986**

JEWISH COMMUNITY CENTER

**LUCKY 100**

YES-COUNT ME IN!  
I'LL TAKE A CHANCE!

NAME \_\_\_\_\_

ADDRESS \_\_\_\_\_

ZIP \_\_\_\_\_ PHONE \_\_\_\_\_

I'M ENCLOSING A CHECK FOR \$100.

I WILL MAIL MY CHECK BY 11/1/85.

The **Playhouse** on stage  
DU PONT BLDG 10TH & MARKET STS.  
WILMINGTON, DE 19801 (302) 656-4401

**Fri., Nov. 29**  
**thru**

**12 Performances Sat., Dec. 7**  
Eves at 8PM; Wed & Sat Mats at 2PM; Sun Mat at 3PM

**COME AND MEET  
THOSE  
DANCING FEET!**

**BROADWAY BEGINS AT  
DAVID MERRICK'S**



**42ND STREET**

Directed and Choreographed by  
**GOWER CHAMPION**

**BEST MUSICAL TONY AWARD 1981**

ORCH MEZZ BALC

Mon thru Thurs at 8 PM			
& Sun Mat at 3 PM	\$35	\$35	\$26
Wed & Sat Mats at 2 PM	\$30	\$30	\$21
Fri & Sat Eves at 8 PM	\$40	\$40	\$31

Make checks payable to The Playhouse Theatre. Please enclose stamped, self-addressed envelope for return of tickets, otherwise held at Box Office. Visa, MC and WSFS cards accepted. NO REFUNDS, but tickets may be exchanged. A subscription selection.

**MAIL ORDER FORM FOR "42ND STREET"**  
(For your convenience—and for best seat locations use this order blank)  
THE PLAYHOUSE THEATRE, DuPont Bldg., Wilm., DE 19801  
Call (302) 656-4401 for information

Enclosed is my  Check  Money Order for \$ \_\_\_\_\_ for \_\_\_\_\_ @ \_\_\_\_\_ each tkt.  
VISA  MASTERCARGE  WSFS  \_\_\_\_\_ / \_\_\_\_\_  
Account Number \_\_\_\_\_ Expiration Date \_\_\_\_\_  
for \_\_\_\_\_ Matinee or \_\_\_\_\_  
1st choice (day/date) Evening 2nd choice (day/date) Evening  
Name \_\_\_\_\_ Street \_\_\_\_\_  
City \_\_\_\_\_ State \_\_\_\_\_ Zip \_\_\_\_\_ Phone \_\_\_\_\_

**MAIL & PHONE ORDERS NOW (302) 656-4401 • 656-4412**

**Chuckles**

Husband (on phone):  
Welma, I have good news!  
You know that new play  
you've been dying to see?  
Well, I just got two tickets  
in the fourth row!  
Wife: Marvelous, honey!  
I'll start dressing!  
Husband: Do... They're for  
tomorrow night.

At the nurses' desk on  
the sixth floor of Mount  
Sinai Hospital, the  
telephone rang.

"Is this the nurse?"  
"Yes, Can I help you?"  
"I hope so. I'm calling  
about one of your patients  
— Sol Bloomberg. That's  
B-L-O-O-M-B-E-R-G. He  
was operated on — four  
days ago."

The nurse consulted the  
charts. "Yes?"

"Nurse, tell me, what's  
his condition? How is he  
coming along?"

His condition is just fine.  
In fact, Doctor Shapiro  
says he can go home Tues-  
day... Who should I say

telephoned?"

"No one. I'm Sol  
Bloomberg, and Doctor  
Shapiro don't tell me a  
darn thing!"

...

Muttel Friedman, newly  
arrived from the old coun-  
try, got a job as a janitor in  
a theater on Second  
Avenue. One afternoon he  
started for a backstage  
room on the door of which  
was this sign:

**CHORUS GIRLS ONLY**

Just as Muttel put his hand  
on the knob of the door, the  
stage manager shouted,  
"Stay out of there!" and  
hurried over. "What's the  
matter with you?" He  
pointed to the sign. "Can't  
you read English?!"

Muttel drew himself up  
in righteous indignation.  
"Who's smoking?"

...

1919. A new immigrant  
glowed with pride — as he  
stood before Judge Cran-  
born, to become a citizen.

"How many states are  
there in the Union?" asked  
Judge Cranborn.

"Forty-eight," said the  
man

"Good. And into how  
many branches is our  
government divided?"

"President, judges, and  
Congress."

"Fine... Now, will you  
solemnly swear to support  
the Constitution?"

A moan escaped the poor  
soul. "I would like to,  
believe me, judge. But I  
have a mother, wife, and  
two children in Romania."

...

The young rabbi finally  
summoned up enough  
courage to say to Mr.  
Benenson, one of the elders  
of the community: "I trust  
you won't mind my men-  
tioning it, but I can't help  
noticing that — you always  
fall asleep when I'm  
preaching."

Replied Benenson,  
"Would I sleep if I didn't  
trust you?"



**WHEN  
YOU WANT  
HIGH YIELD  
ANNUITIES**

FRANK KESSELMAN C.L.U.  
TRANSAMERICA INSURANCE  
SERVICE  
(302) 475-2250  
2000 Foulk Road  
Foulk Road Office Park Plaza  
Wilmington, Delaware 19810  
We Make The Difference  
Insuring Your Future



**GOING - AWAY**

Call Susan and Carl Strauss  
*Professional Child Care  
or House Sitting*

Contact Us At Night

**994-0436**  
or Day  
**656-3066**



**FAIRFAX VALET**  
PROFESSIONAL  
CLEANERS & LAUNDRIES  
Custom Monogramming  
Service

**Fairfax Shopping Center**  
Route 202 (Concord Pike)  
**652-6725**

**Barry Roseman, DMD, MD**

Takes pleasure in announcing the opening  
of his office for the practice of Oral and  
Maxillofacial Surgery and surgery of the tem-  
poromandibular joint...

**708 Foulk Road**  
**Wilmington, De. 19803**

**302-764-7714**

**By Appointment**

**Thriftway**

**5%  
SR. CITIZEN  
DISCOUNT**  
EVER TUESDAY ONLY  
SEE COUNTERS FOR  
DETAILS



**INDEPENDENTLY  
OWNED SUPERMARKETS**

**Tri-State Mall**  
I-95 & NAAMANS RD.  
CLAYMONT, DEL. 19703  
STORE HOURS: Sunday 9AM-5PM  
Mon.-Sat. 8AM-9PM

**Penn Mart Center**  
DU PONT BLVD. & BASIN ROAD  
NEW CASTLE, DEL.  
STORE HOURS: Sunday 8AM-6PM  
Mon.-Sat. 8AM-10PM

**Graylyn Crest Center**  
1718 MARSH ROAD  
WILMINGTON, DEL. 19803  
STORE HOURS: Sunday 8AM-6PM  
Mon.-Sat. 8AM-9PM

**Faulkland Road**  
CHESTNUT RUN CENTER  
1710 FAULKLAND RD.,  
WILMINGTON, DEL. 19808  
STORE HOURS: Sunday 8AM-6PM  
Mon.-Sat. 8AM-9PM





## Jewish Family Service of Delaware

Jewish Family Service is a constituent agency of the Jewish Federation of Delaware and a member agency of the United Way of Delaware.

### Jewish Family Policy

By Arnold Lieberman,  
Executive Director



Our main focus at Jewish Family Service has naturally been our own community and it will always be that way. However, it is important for us and for all Jews to also be aware of the overall American Jewish community as well as Israel and the

world Jewish community. In 1980, the William Petshak National Jewish Family Center was established, with the announced goals of promoting research on family problems, developing innovative programs, and furthering a greater awareness

of family needs in the Jewish and general communities.

The last few issues of the Center's newsletter have examined "Family Policy" or the impact of government actions on the family. There have been pros and cons regarding each administration in this area and there is no precise answer.

Out of this discussion arose the subject of a "Jewish Family Policy." Not surprisingly, there were different views expressed and no overall agreement.

One position suggested that "We have a major stake in 'good' social policy - policy developed from a universalistic rather than a narrowly defined, particularistic perspective..." Another authority argued that "...has not given adequate credence to the American Jewish community as an independent entity with goals and values which, at points, are not compatible with the definition of desirable national family policies."

There are differences regarding the desirable amount of government involvement and the desirable amount of inward turn on the part of the Jewish community.

Some of the major areas of concern regarding the overall American family are employment, inflation, poverty, the inequities and gaps in health and medical care, and the growing threats to public education. Some Jewish family concerns are zero population growth, intermarriage, prolonged singlehood, dual-career families, and the need to enhance Jewish identity.

Establishing a separate Jewish family agenda raises many problems. Even if all the practical difficulties were surmountable (which is doubtful at present), conflicts over values would still remain. Therefore, the Center will continue to study and analyze the problems and offer information, alternatives, and choices.

Since our local community has never been significantly different than the overall American Jewish community, we at Jewish Family Service also attempt to do our part on the local level to help people deal with their own "Jewish Family Policy."

We are available to anyone simply by calling 478-9411.

### Dear Rachel

Dear Rachel,

My daughter lies. No ifs, ands, or buts about it; that is what she does. I have tried everything!!! to get her to tell me the truth. I have yelled at her, punished her, bribed her, reasoned with her, pleaded with her, grounded her, read her the Ten Commandments — you name it. She still tells me the most obvious, stupid lies that she has to know I will find out about and ground her for. She lies about school, homework, her friendships, and whether she cleared the dishes off the table. She is driving me crazy!!! Help!!!

Furious and Frustrated Mother

Dear Mother,

Lying is a symptom, not a disease. If your daughter is lying to you so much that she gets into constant trouble, she must be benefiting from it in some other way. In other words, the rewards of lying

and punishment must be greater than the pain of telling the truth. You need professional counseling to identify and cure the underlying problem. Don't wait; you both need the help right now.

Rachel

Send letters to "Rachel, c/o Jewish Family Service, 101 Garden of Eden Rd., Wilmington, DE 19803." Names and details will be altered in published letters to protect your privacy.

### ISRAEL BONDS

For sale, reinvestment and redemption information call:

**658-9337**

### WHY BE ALONE?

... pick up the phone and call

### JEWISH DATING SERVICE

You Just May Meet The Right Person

Effective \* Inexpensive \* Reliable \* Tri-State

Call/Write - FREE QUESTIONNAIRE  
P.O. Box 14393, Phila., Pa. 19115

215-342-9951



RUD Distributors Ltd., Inc.

Wholesale Distributors  
of Cigars - Tobacco  
Candy - Maps

Wilmington  
(302) 428-1783  
(302) 428-1-R-U-D



Watch For Opening Of Our  
New Warehouse Outlet!

### PARENTS AND GRANDPARENTS OF COLLEGE STUDENTS: PRESENTING...THE HAPPY HOLIDAY "CHAG SAMEACH" BOX

Celebrate the holidays with your college student when you cannot be together by sending a happy holiday "Chag Sameach" package for Rosh Hashanah, Sukkot, Chanukah, Purim, Passover, and/or Shavuot.

Each 4-6 pound Kosher package contains delicious cakes, cookies, and appropriate "sweet" symbols for the holidays such as challah, honeycake, fruit, dreidel cookies, hamantaschen, and other ritual items.

LET US BE YOUR  
COURIER & ASSEMBLE  
YOUR SPECIAL  
HOLIDAY TREATS!

(\$25. for first package  
and \$18. for second  
package plus postage, except  
Passover which is \$30. plus postage.)  
Allow 3 weeks for delivery.

REACH OUT AND  
TOUCH YOUR LOVED  
ONES ON THE  
JEWISH HOLIDAYS  
(not for college students only)

(DJV)

Please send me your free brochure describing Chag Sameach packages.

NAME \_\_\_\_\_

ADDRESS \_\_\_\_\_

CITY \_\_\_\_\_

STATE \_\_\_\_\_

ZIP \_\_\_\_\_

MAIL TO: HAPPY HOLIDAY, 1656 Comanche Road, Arnold, MD 21012  
OR CALL (301) 261-2550

### HENRY'S BICYCLE SHOP



OWNED AND  
OPERATED BY  
JOSEPH  
HURSHMAN

FUJI • MOTOBECANE • SHOGUN • ROSS  
2518 W. 4th St. 654-0361

### "I always dreamed of having my wedding reception at the Hotel du Pont"

"There's really no place else quite like it. The Hotel does everything so beautifully. And that's just how I wanted my wedding to be too."

What a nice surprise to learn that our reception could include almost anything we wanted... from a four-hour open bar, a choice of menus, champagne for the guests...to a magnificent wedding cake. And their Banquet Staff was so helpful. Their office is open six days a week, from 10 a.m. to 6 p.m. So my mother and I went in on a Saturday and worked out all the details.

"I'll always remember that day...our first dance, in that romantic setting...the champagne toast... Everything was perfect!"



### Hotel duPont

WILMINGTON, DELAWARE

Please call (302) 594-3133 for more information. No obligation, of course.  
\*Sunday by appointment

SUPPORT OUR  
ADVERTISERS  
THEY HELP BRING  
YOU THE  
JEWISH VOICE

# DECLARATION OF INTENT

## Declare (di-klar) v. - tr.

1. To state officially or formally. 2. To state with emphasis or authority; affirm. 3. To reveal or manifest; prove...intr. To proclaim one's choice, opinion, or resolution; to act.

The legacy that enriches future generations depends upon the strength of our intentions and the clarity of our vision today.

The Declaration of Intent is an easy and effective way to join our community's leaders in helping to meet Jewish needs in the years ahead.

**Take advantage of this opportunity  
to make your declaration to**

**THE JEWISH COMMUNITY OF DELAWARE  
ENDOWMENT FUND**

101 Garden of Eden Road  
Wilmington, Delaware 19803  
(302) 478-6200



Gentlemen:

It is the tradition of our Jewish faith to share our blessings. Therefore, I take deep satisfaction in declaring my intent to provide for the needs of future generations in the following manner:

- I have made provision
- I shall make provision during the next \_\_\_\_\_ months.

to support the Jewish community of Delaware through

- A lifetime gift of securities, real estate, life insurance or other property.
- The establishment of a personalized fund.
- The establishment of a charitable remainder trust.
- A bequest in my will.
- Other

I understand that this declaration of intent is not a legal obligation and may be changed at my discretion and that The Jewish Community of Delaware Endowment Fund will send me a copy of this Letter of Intent for my personal records.

DATE \_\_\_\_\_

NAME (Print) \_\_\_\_\_ SIGNATURE \_\_\_\_\_

ADDRESS \_\_\_\_\_

## Obituaries

### Eugene A. Weinman

Eugene A. Weinman, 62, who retired as a senior design consultant from the Du Pont Co. engineering department in April, drowned Monday, Sept. 30, in heavy surf while swimming off Jupiter beach.

Mr. Weinman, 62, of 132 Orion Circle, Jupiter, Fla. formerly resided at 4649 Norwood Drive, Liftwood Estates, a suburb of Wilmington, Del. He moved to Jupiter on Aug. 1. He had been with the Du Pont Co. since 1952.

He graduated from City College of New York in 1943 with a degree in chemical engineering and received a master's degree in 1947 from the Polytechnic Institute of New York in Brooklyn.

He was an Army veteran of World War II.

Mr. Weinman was a member of Sigma Xi, the American Chemical Society and the American Association for the Advancement of Science. He was a member and the 1978 director of the American Institute of Chemical Engineers. He was the 1981-1982 treasurer of the institute and was one of three nominees for president when he died.

Mr. Weinman was former vice president and a member of the board of trustees of Congregation Beth Emeth; a former member of the board of Jewish Family Services of Delaware; and a member of the Jewish Federation of Delaware.

He was a member of Du Pont Country Club and was an avid tennis and bridge player and skier.

He is survived by his wife, Myrna G.; two sons, David of Philadelphia and Eric of Chicago, and a sister, Kathleen Stockhamer of Teaneck, N.J.

Graveside services were held in Jupiter.

In memoriam, the family suggests contributions to the American Heart Association, 4-C Trolley Square, Wilmington 19806.

### Melvin Leibowitz

Melvin Leibowitz, 61, of 25 Holly Hill Road, Holly Hill, died Monday, Oct. 7, in St. Francis Hospital.

Mr. Leibowitz attended

Pennsylvania State University before serving in the Army in World War II. He graduated from the RCA Institute of Radio-Engineering and later became proprietor of Delaware Electronics Co. at Fourth and Tatnall streets. He retired in 1967.

He was a member and honorary director of Congregation Beth Shalom, and was on the National Board of the Jewish Community Center and was active in volunteer work at the Milton and Hattie Kutz Home.

He was a ham radio operator, transmitting under the call sign W2KET.

He is survived by a sister, Beatrice L. Laub of Hockessin.

Services were held in Chandler Funeral Home, 2506 Concord Pike, Sharpley. Interment was in Beth Emeth Memorial Park.

In memoriam the family suggests contributions to Congregation Beth Shalom, 18th Street and Baynard Boulevard, Wilmington 19802.

### Jeannette A. Pernick

Jeannette A. Pernick, 76, of Lauderdale Lakes, died Wednesday, Oct. 16 in Holy Cross Hospital, Lauderdale Lakes, Fla.

Mrs. Pernick was a partner with her husband, Nathaniel L., in an insurance agency in Detroit. Her husband died in 1957.

She was also an accountant with the Wayne County (Mich.) Intermediate School District.

She was a charter member of Temple Israel in Detroit, and a founding member of the Detroit Association for Retarded Citizens. She was active in Hadassah for many years.

She is survived by two sons, Roger J. of Wilmington, and Lawrence R. of Southfield, Mich.; a daughter, Martha Riley of Walled Lake, Mich.; a sister, Edna Persky of Lauderdale Lakes, and five grandchildren.

Services were held Friday, Oct. 18 at Kauffman Funeral Home, Southfield, Mich. Burial will be in Oak View

Cemetery, Royal Oak, Mich.

In memoriam the family suggests contributions to the Wilmington Chapter of Hadassah, care of Sandye Turnauer, 309 Walden Road, Wilmington 19803.

### Phyllis Lipkin

Phyllis Tina Glassman Lipkin of Penns Grove, N.J. died Friday, Oct. 25.

She is survived by her mother, Evelyn Adams Glassman, and three children, Robin Slutzky, and Ronn and Randie Lipkin.

Services were held Sunday, Oct. 27 from Congregation Beth Emeth, 300 W. Lea Blvd., Wilmington. Arrangements were made by Schoenberg Memorial Chapel.

In memoriam the family suggests contributions to the United Way, 701 Shipley St., Wilmington, Del. 19801 or Bar Kochba Forest, c/o Congregation Beth Emeth, 300 W. Lea Blvd., Wilmington, Del. 19802.

## Classified

Classified ads are available at 75¢ per line (at least two lines, please). Send your ad, with check, to Classified Ads, The Jewish Voice, 101 Garden of Eden Rd., Wilmington, DE. 19803. (302) 478-6200

HILTON HEAD, SC. - 2BR Ocean View Condo, 2 pools, tennis, bicycling, restaurants. Reasonable rates, call owner 239-3275 evenings or weekends. 994-5700 days.

STUDENT TOUR AND CAMP CONSULTANTS. No fee charged. Let our 14 yr. investigating programs placing students, getting feedback help you select from over 500 programs; winter, summer skiing, farming, all sports, computers, college and European programs, sailing, art, cooking, cross-country, etc. Programs fill early. Call now. Ardmore off. Dorothy Graff, Diane Petrosky, 215-642-5882.

A-1 CLEANING TEAMS - Holiday House - cleaning, pre & post party services. Call 652-0555.

HAVING A PARTY? A full entertainment service to include catering, waitron and bar services for casual to formal private parties, receptions, weddings and business functions. Call for free consultations for the last detail of a fine touch. 994-2725 or (215) 255-5118. Fine Details, whatever the season..... Anything to make your occasion a happening!

## Schoenberg Memorial Chapels



In the hallowed tradition of our faith....

a dignified setting with reverence for customs and observances in strict accord with family wishes.

519 Philadelphia Pike  
762-0334

## Bob Weiner Jewish Folk Singer

With or Without Guitar

Israeli  
Yiddish  
Chassidic  
American  
Folk Music

762-1029  
658-8700

4th  
Anniversary  
Celebration

## PAPER IMPRESSIONS

20% OFF

With This Ad Until Dec. 31

ARLENE MILLER 358-1797  
ANITA SOBEL 475-2440

## office furniture



We have it all  
in stock, a huge  
selection for  
immediate  
delivery.



## BERGER BROS. INC

Office experts since 1919.

Located at 3rd & Market, Wilmington  
302-655-7166

(302) 475-9300

(302) 475-5300



HOWARD AND SHARON COHEN  
2 HILTON ROAD  
WILMINGTON, DE 19810

WHY COOK TONIGHT - Call  
Elegante-Catering for the Best  
in Quality Cooked Foods.

Let our chefs cook a delicious  
meal for you or your company.

Special Thanksgiving Orders  
Are Being Accepted Now.

Hours: Tues. to Fri. 6-5  
Sun. 6-3

## The Most Prestigious Address in Delaware Is Not For Sale.



It's for rent! An outstanding luxury midrise apartment that reflects the lifestyle and tradition of excellence you have come to expect. For years Brandywine Hundred Apartments have been admired as Delaware's most distinguished address.

Now...it's time to stop just admiring but to begin enjoying the lifestyle you have earned! Open spacious floor plans, carefully planned 24 hr. security, draperies, all channel TV Cable, covered inside parking served by elevator, social club and card room, private swim club, exclusive lobbies, beautifully landscaped grounds. Dramatic views, balconies; and soon tennis courts, frost free refrigerators, self cleaning ovens and washer/dryer in every apartment.

When you consider all the features, the luxury, the prestige of this exclusive community, there will be no doubt that Brandywine Hundred Apartments is in a class by itself. Come and see us today!

Brandywine Hundred Apts.  
400 Foulk Rd. 656-7781

We care more because we own the property that we manage.

## Organizations in the News

### Adult Jewish Education At Beth Shalom

We are pleased to announce the following ongoing adult education programs at our synagogue:

a. Weekly Torah Study Class - 9-10 a.m. every Saturday morning, in the synagogue library with Rabbi Cohen. This year the focus of our study will be the historical and sociological elements of the Biblical narrative. At present, we are using Julian Morgansten's *The Book of Genesis* as a supplementary text, analyzing some of the norms and concepts presented by the Torah, making them more understandable to the modern reader.

b. The Lunch and Learn Series - beginning Thursday, Oct. 17, 12-1:15 p.m., and continuing for the following five weeks. The topic: "American Jewry at the Crossroads." The class will identify some of the vital issues confronting American Jewry today, particularly those of a denominational nature. Who can be considered a Jew? What role does the Israeli rabbinate play in determining an American Jew's identity? What are the major issues dividing Orthodox, Conservative, Reform and Reconstructionist Jews? Is factionalism threatening to rend our community asunder? Guest speakers representing these major

Jewish denominations will be invited to share their perspectives with us. The basis of the discussion will be Dr. Irving Greenberg's provocative articles that appeared in the *Jewish Voice* during the summer (xeroxed copies will be distributed in class). Please join us for what will undoubtedly prove to be a very stimulating and informative series!

c. "Shabbat of Learning" - the last erev Shabbat of every month, beginning Oct. 25. Inaugurated last year, this program has proved to be quite popular. Rabbi Cohen devotes his sermon to a particular issue of Jewish concern, and then invites discussion of his presentation at the oneg following services. The theme for this year will be "Jewish Ethics and Halakhah for Our Time," based on Rabbi Basil F. Herring's book of the same title (N.Y.: Ktav Publishing House and Yeshivah Univ. Press, 1984). The topics will be: Abortion, Oct. 25; Truth and the Dying Patient, Nov. 29; Euthanasia, Dec. 27; Legal Counsel and the Truth, Jan. 31; Civil Disobedience, Feb. 28; Capital Punishment, March 28; Homosexuality, April 25; Parents and Children, May 30; Smoking and Drugs, June 27. Rabbi Cohen will begin with a question based on a hypothetical practical case involving each issue, and then will introduce

classic Jewish ethical and legal statements that suggest a contemporary response to each problem. A tentative conclusion will be offered, with congregational discussion following during the oneg. Members of the congregation will serve as respondents to the presentation, preparing questions in advance to help guide our discussion. As the topics indicate, there's plenty to discuss! Why not find out what Judaism has to say on these very pertinent questions, by joining us the last Friday night of each month for a Shabbat of learning!

### Lox Box Day

On Sunday, Nov. 24, Congregation Beth Emeth will sponsor a "Lox Box" day.

A box containing the traditional Sunday Jewish brunch of bagels, cream cheese, Nova Scotia lox, garnishes, sweet rolls, and a surprise bonus will be delivered to your home or can be picked up at Beth Emeth on Lea Boulevard. Boxes will sell for \$7 each plus 50¢ delivery charge. Call the temple at 764-2393. Orders must be received by Nov. 20.

### Jewish War Veterans

There will be a regular meeting of the Jewish War Veterans of USA at the Presidential Apartments Social Hall, 2000 Society Drive, Claymont, Del. on Monday, Nov. 11 at 8:30 p.m.

All members are urged to attend. There will be reports given on the Veterans Day program at the Delaware Memorial Bridge on Nov. 11 and the results of the meeting in regard to the Memorial Day Parade.

The Department Commander will speak on what is taking place nationally. All Veterans located in the Delaware area are invited to join the Jewish War Veterans. "We need you - you need us" to carry on the extensive program committed to upholding America's Democratic traditions. "We can only do this with membership." Applications can be had by calling Is. Weiner - 764-2120. Members are requested to wear their caps.

Refreshments will be served.

**SUPPORT OUR  
ADVERTISERS**

### Beth Emeth Sisterhood Honors 'First Ladies'

Since its inception, Congregation Beth Emeth has had leaders who have guided Sisterhood through the completion of their many fundraising projects. Therefore, at the monthly Sisterhood meeting on Tuesday, Nov. 12, it is altogether fitting and proper to honor the services of the presidents who are continuing their efforts in making the Sisterhood of Congregation Beth Emeth an outstanding member of the National Federation of Temple Sisterhoods. Appropriate tributes will be made to past presidents from the 1930s to the present, by noting their achievements. A ceremonial presentation will be made of a calligraphic scroll to each president and Rabbi Peter H. Grumbacher will offer an especially prepared poetic tribute. The "President's Luncheon" will be served at noon before the program. Please call Carole Bernstein at 475-5269 for luncheon and babysitting reservations. We

are certain that all Sisterhood members will want to be part of this wonderful meeting and please note we urge all ladies of the community to attend this auspicious occasion, so that you may honor your relatives and friends.

### ORT Holiday Boutique

For the latest ideas in gift items, be sure to shop at the Women's American ORT, BAL holiday Boutique Thursday, Nov. 21 at the Jewish Community Center from 7:30 p.m. to 9:30 p.m.

Costume jewelry, personalized stationery and clothing, tupperware, childrens toys, stitchery, cakes, cosmetics, books, and even liquid painting and appliques, are among the many items for sale.

The ORT holiday boutique is open to the public. For further information contact Alana Meiners, 478-5044.

### Give Your Furniture and Household Goods to the Economy Shop

- Pickup Service
- Tax Deduction
- Phone 655-8437

**ECONOMY SHOP, 611 KING ST.**

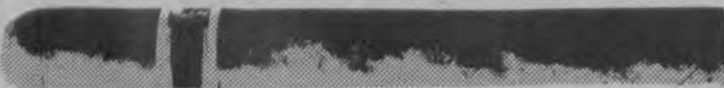
**OLSTEN**  
TEMPORARY SERVICES

WILMINGTON ..... 575-1700  
NEWARK ..... 738-3500  
CONCORD PLAZA ..... 478-6110  
DOVER ..... 1-734-5379

Gilbert J. Spiegel  
Founder

Pat Spiegel Chalphin  
President

**What's important  
in an imported cigar?**



**The tobacco!**



**THE SMOKE SHOP**

Wholesale - Retail - Mail Order

Delaware Ave. at Dupont St.  
Wilmington • 655-2861



**As Seen on TV!**

**Maaco**

**50% OFF  
MAACO SUPREME  
PAINT SERVICE**

REG. \$349.95  
FOR ONLY

**\$175.00**

That's right...ACT NOW and during MAACO'S WINTER SALE we will paint your car with the MAACO SUPREME Paint Service at half its regular price... Act Now...Offer Expires 12/31/85

2400 Gov. Printz Blvd.  
762-5777

Paint Service Does Not Include Bodywork or Extras.  
Must Present Coupon with Estimate

Hours: Mon.-Wed. 8 a.m.-5 p.m.  
Thurs. & Fri. 8 a.m.-6 p.m.;

Closed Sat. & Sun. Limit One Per Car

# Organizations in the News

## 1985 Rabbi Jacob And Leah Kraft Lecture

Beth Shalom is pleased to announce that the 1985 Kraft Lecture will be held on Sunday, Nov. 3 at 11 a.m. in the main sanctuary. The featured speaker will be Rabbi Alan Silverstein, spiritual leader of Congregation Agudath Israel of West Essex, Caldwell, N.J.

Rabbi Silverstein has outstanding credentials. A native Philadelphian, he received his B.A. in history from Cornell, as well as an M.A. in Jewish history from Columbia. He received a master of Hebrew letters degree and was ordained rabbi at the Jewish Theological Seminary, where he is currently a Ph.D. candidate.

One of the bright new lights on the Conservative Jewish horizon, Rabbi Silverstein has published numerous articles in popular magazines and scholarly publications, and serves as an officer of numerous rabbinical organizations on both the local and national levels. He has been invited by congregations and Jewish Federations across the country to serve as



Rabbi Alan Silverstein

guest speaker or scholar-in-residence, and most recently was heard at our own Delaware Valley Region of United Synagogues's "Colloquium VIII" as its keynote speaker. A most dynamic and engaging young man, Rabbi Silverstein combines his erudition with a genial speaking style that makes him a pleasure to hear.

His topic is most timely: "Gloom and Doom or Jewish Renaissance? Jewish Life in America Today and Tomorrow." Rabbi Silverstein will be commenting on a controversial new book written by Charles E. Silberman, *A Certain People*. Contrary to the pessimistic appraisal of American Jewish life that we customarily hear, Silberman insists that American Jewry is thriving. Rabbi Silverstein will respond to the major points made by this author, including his own research on the question. His will be a refreshing, upbeat evaluation of where our community is headed, something we all should hear.

The morning's program begins with a minyan at 9

a.m., followed by a breakfast sponsored by our Men's Club. Rabbi Silverstein's presentation will begin in the sanctuary at 11 a.m. Everyone is cordially invited to attend.

## Jewish Singles Brunch

A "get-together/get acquainted" brunch for Jewish singles in the area is planned for Sunday, Nov. 10, at 10:30 a.m. at Beth Shalom, 18th & Baynard Boulevard. Please call and let Garee Lisansky, 764-5651 know that you will be coming, but feel free to come by even if you have not made a reservation.

Our list of singles is growing, but we are sure there are more names to add. Please help us to get a much needed program off to a good start. Call Garee Lisansky if you are interested.

## NCCJ Seeks Candidates For Annual Award

NCCJ is calling on all area civic groups, community associations and individuals for assistance in naming candidates to receive the Delaware Region National Conference of Christians and Jews (NCCJ) annual "Community Builders Award." The nominating deadline is Monday, Nov. 4.

Nominating forms for "Community Builders" are available by calling NCCJ at 655-0039.

## Chai Shalom Hadassah

The Chai/Shalom Hadassah members cordially extend an invitation to join them on Monday evening of Nov. 11, 7:30 p.m. at the home of Zelda Rich, 6 Ridgewood Circle, to a program on "Stress."

George Meldrum, the speaker, will leave time for questions and answers. Meldrum, who has a master's degree in psychology, is with the Division of Service to Children, Youth, and Families. This is the state agency that is responsible for all services to children.

George formerly worked for the Division of Mental Health, serves on many local boards, is an active community volunteer, is one of the founders of the Support Group for Suicide Prevention, and is a specialist in Mental Health Prevention.

## BBW Card And Game Night

On Saturday, Dec. 7 at 8 p.m. B'nai B'rith Women of Delaware is sponsoring a game and card night in the Potter Auditorium at the B'nai B'rith House, 8000 Society Drive, Claymont. Reservations may be made by sending your check (made out to B'nai B'rith Women) in care of 211 W. 37th St., Wilm-

ington, DE 19802. The cost is \$4 per person by reservation until Nov. 27 or \$5 per person at the door. Refreshments will be served.

Come by yourself or with friends. Bring your own cards and games or join with others. For further information call 764-0336.

## WE RENT EVERYTHING FOR EVERY PARTY!



TABLES • CHAIRS • TABLE LINENS  
FINE CHINA • SILVER • GLASSWARE  
AND STEMWARE • CHAFING DISHES  
CANDELABRA • PUNCH SETS AND  
FOUNTAINS • CENTER PIECES  
SKIRTING RENTALS • PAPER GOODS  
FULLY EQUIPPED KITCHEN TRUCKS  
PORTABLE GRILLS

ANY SIZE OCCASION - UP TO 1,000 • WE DELIVER

DIAMOND STATE PARTY RENTALS & SALES

999-0807 762-1780

807-B KIAMENSI ROAD • WILM., DE

## NCJW Paid-Up Membership

On Wednesday, Nov. 20, the Wilmington Section of the National Council of Jewish Women will hold its paid-up membership meeting at the home of Carol Concors, 2 Broadbent Road, Northminster, at 11:30 a.m. All who are interested in learning more about our organization are welcome to attend. Lunch will be served. The deadline for reservations is Nov. 15. R.S.V.P. to Betty Diznoff, 478-4865 or Marsha Evantash, 475-9430.

## HARRY DAVID ZUTZ

Insurance Exclusively at 300 Delaware Avenue. Underwriting Facilities for: Fire Casualty, Auto, Marine, Surety Bonds.

Specialists for unusual risks.

658-8000

## DON'T MISS IT!!!

Hadassah's International Night

Saturday, Nov. 9th, 1985 at 8:30 p.m. at Temple Beth Emeth

Tasty tidbits from around the world  
Exotic Middle Eastern Entertainment

Call for reservations now: May Cohen - 792-1095  
Marion Zimmerman - 656-9070

**HAPPY HARRY**

HOME HEALTH CARE SERVICE  
EVERYTHING FOR YOUR FAMILY'S GOOD HEALTH  
16-A TROLLEY SQUARE WILMINGTON, DE 19806

MEDICAL EQUIPMENT

**(302) 654-3019**

24-HOUR EMERGENCY SERVICE

- FULL SERVICE SALES and RENTALS
- FREE HOME CONSULTATIONS by our complete PROFESSIONAL STAFF
- FREE SET-UP and DELIVERY
- WE BILL MEDICARE

## THE Anniversary Ring

...a gift she will treasure forever.

1/4 ct.  
OF DIAMOND  
IN A 14KT. GOLD BAND  
AFFORDABLY PRICED AT  
REGULAR PRICE \$775.00

**SPECIAL SALE PRICE \$542<sup>50</sup>**

1/2 ct.  
OF DIAMONDS  
IN A DOUBLE ROW  
REGULAR PRICE \$1400.00

**SPECIAL SALE PRICE \$980<sup>00</sup>**

ALTERNATING  
RUBIES & DIAMONDS  
REGULAR PRICE \$900.00

**SPECIAL SALE PRICE \$630<sup>00</sup>**

Place your confidence in "The Ring Leaders"

**HARRIS Jewels**

824 MARKET ST. ON THE MALL  
OPEN MON.-FRI. 10-9; SAT. 10-8; 655-6253  
4377 KIRKWOOD HIGHWAY  
OPEN MON.-FRI. 10-9:15; SAT. 10-7:30; 999-9901  
BRANMAR PLAZA MARSH & SILVERSIDE RDS.  
OPEN MON.-FRI. 10-9; SAT. 10-7; 475-3101

**Answers to Crossword Puzzle for Jewish Book Month-1985**

1	M	2	I	3	T	4	A	5	H	6	E	7	M	8	A	9	D	10	A	11	R	12	S								
14	A	15	S	16	O	17	R	18	S	19	O	20	D	21	A	22	I	23	O	24	N	25	I	26	A						
17	J	18	E	19	W	20	I	21	S	22	H	23	B	24	O	25	O	26	K	27	M	28	O	29	N	30	T	31	H		
20	A	21	R	22	E	23	A	24	L	25	O	26	M	27	R	28	I	29	R	30	E	31	E	32	E	33	34	35	36		
23	S	24	E	25	L	26	D	27	O	28	M	29	30	31	32	33	34	35	36	37	38	39	40	41	42	43	44	45	46		
35	A	36	B	37	B	38	A	39	S	40	O	41	M	42	E	43	G	44	O	45	R	46	D	47	48	49	50	51	52	53	
42	M	43	O	44	R	45	D	46	E	47	C	48	A	49	I	50	M	51	K	52	A	53	P	54	L	55	56	57	58	59	
45	A	46	B	47	E	48	A	49	M	50	P	51	R	52	I	53	V	54	E	55	56	57	58	59	60	61	62	63	64		
48	H	49	E	50	R	51	S	52	E	53	Y	54	S	55	L	56	A	57	58	59	60	61	62	63	64	65	66	67	68	69	
52	K	53	A	54	F	55	56	57	58	59	60	61	62	63	64	65	66	67	68	69	70	71	72	73	74	75	76	77	78	79	
59	E	60	L	61	M	62	S	63	L	64	O	65	66	67	68	69	70	71	72	73	74	75	76	77	78	79	80	81	82	83	84
67	P	68	E	69	O	70	P	71	L	72	E	73	74	75	76	77	78	79	80	81	82	83	84	85	86	87	88	89	90	91	92
70	H	71	A	72	R	73	R	74	Y	75	T	76	A	77	N	78	A	79	80	81	82	83	84	85	86	87	88	89	90	91	92
73	A	74	H	75	O	76	Y	77	S	78	E	79	X	80	A	81	M	82	83	84	85	86	87	88	89	90	91	92	93	94	95

© 1985 JWB Jewish Book Council

Created for the JWB Jewish Book Council by Joy L. Wouk

## New Gratz Program

As an experimental program this year, Delaware Gratz Hebrew High School is offering a choice of elective subjects to all but first year students.

Adi Milstein, Gratz's resident Bible expert, will be coaching a group of students who are interested in entering the National Bible Contest this year. They will engage in an intensive study as outlined by the Department of Education and Culture of the World Zionist Organization. Students will participate in the local contest and we expect several to represent Gratz and Delaware in the National Contest finals to be held in New York City. We're hoping to make our community proud by having more winners than ever this year.

Ronit Keret, who has taught at the University of Haifa in Israel, and is now teaching Hebrew literature courses at Gratz will be leading a group entitled "Conversational Hebrew." Using a variety of audio-visual materials, students will practice language skills as they participate in simulations and discussions of everyday life in Israel.

School and community service is the third new elective. Lori Hubner, who also teaches history, ethics and education courses at Gratz, will lead this group. Participating students will choose to do special volunteer projects in conjunction with a community agency or a local synagogue. They will also publish a newsletter and help to initiate and coordinate extra-curricular school activities.

Gratz students are busily engaged in the progress and development of this newly implemented elective program for the 5746 school year.

Residential • Investment  
Complete Relocation Services

Warren J. Deitcher  
REALTOR® ASSOCIATE

**GREENVILLE** Better Homes and Gardens  
CO., INC., REALTORS®

4006 Concord Pike  
Wilmington, DE 19803  
OFFICE: 478-3660

**ISRAEL PRICE BUSTER!**

**15-DAY TOUR**

from **\$1099** p.p./d.o.

Nov. 24, Dec. 15, Jan. 5, Feb. 9, March 16  
Special features include:  
R/T transportation from PHila., R/T air via El Al, Breakfast & Dinner Daily, Full Sightseeing, First Class Hotel Accommodations, Folklore Evenings in Jerusalem. Air only from \$549.

**DEAL OF THE CENTURY!**

FIRST CLASS HOTELS

**\$2 A NIGHT** p.p./d.o.

**FOR 4 NIGHTS\***

Includes 5 Nites' Accommodations at the Basel Hotel, Tel Aviv or the Eilon Tower, Jerusalem, Israel. Breakfast Daily, All Taxes & Service Charges at Hotel. (\*Must be purchased in conjunction with El Al Super Apex fare of \$719). Additional Nights only \$18 per person. Deluxe Hotels available at a small supplement. Valid for departures between Nov. 11, 1985 to March 15, 1986.

**JAY PRESS**

INTERNATIONAL TRAVEL EXCHANGE

8040 Roosevelt Blvd.  
(Suite 211) • (215) 332-2444

"Personally Yours,"

*Lorraine*  
-unique gifts-

illuminated haftorahs, ketubim  
sign-boards, favors in Hebrew/English  
• 475-4665 •

Our Job Makes Your Job Easier

**PLACERS** OFFICE SERVICES **TEMPS**

**PLACERS** PROFESSIONAL/TECHNICAL **TEMPS**

OFFICE SERVICES DIVISION  
JOAN SABBATO  
**571-8367**

PROFESSIONAL/TECHNICAL DIV.  
BARBARA GREENFIELD  
**571-8376**

2000 Pen... enue, Suite 201, Wilmington, Delaware 19806

## WORKING CAN BE WORTH YOUR WHILE...

With Top Pay, Interesting Assignments, Flexibility, and CDI Temporary Services!

Take Advantage Of The Flexibility And Opportunity That Temporary Work Has To Offer You.

Come Meet us NOVEMBER 18 From 5:30 p.m. - 9:30 p.m. at the Jewish Community Center at 101 Garden of Eden Road, Wilmington. Let Us Tell You More About CDI And Opportunities Available With Temporary Employment.

If You Enjoy Working 1-5 Days A Week, Meeting New People and Earning Good Wages, We Are In Need Of Your Skills.

Come Join Our Team; You'll Be Glad You Chose Us!

**CDI TEMPORARY SERVICES, INC.**  
**302-658-1999**

Will your teenager be among the students who score 250 more points on the SAT?

He or she might be. Many students who have taken our prep course have increased their scores 150, 200, even 250 points. Call. Another 250 points can make a big difference.

**KAPLAN**

STANLEY H. KAPLAN EDUCATIONAL CENTER, LTD.

The world's leading test prep organization.

CALL TODAY OR COME VISIT OUR CENTER IN SUITE 60, INDEPENDENCE MALL, WILMINGTON. OUR PHONE NO., IS

**(302) 571-8444**

**COME BACK TO SENSIBLE PRICES...**

LARGE SELECTION OF ALL WALL COVERINGS IN STOCK

**ALL BOOKS DISCOUNTED**  
CUSTOM MIXED PAINTS

*Dutch Boy*

SPECIALIZING IN:  
MINI BLINDS - VERTICALS - WINDOW SHADES - CUSTOM & STOCK - UP TO 131 INCHES (CUT FREE)  
GLASS & SCREENS REPAIRED  
RELATED HARDWARE

**REG STAR**  
SINCE 1911 WALLPAPER & PAINT CO., INC.

**DISCOUNT DECORATING OUTLETS**  
Window Treatment Installation Available

Mastercard  
VISA  
WFSS

FORMERLY 214 W. 4th  
**858-4779 - 856-3066**  
201 GREENHILL AV., WILM.

**762-7827**  
MERCHANTS SQ., WILM.

GOOD SERVICE MAKES BUSINESS A PLEASURE

**TAKE-A-BREAK**

COFFEE SERVICE  
VENDING MACHINE SERVICE  
COFFEE CATERING  
BOTTLED WATER SERVICE  
FOOD MANAGEMENT SERVICE

FAST, LOCAL SERVICE. BRAND NAME PRODUCTS  
ATTRACTIVE, FUNCTIONAL EQUIPMENT  
RADIO DISPATCHED REPAIR SERVICE.

**MICROWAVE & REFRIGERATOR LEASING**  
**658-8571**  
413 8th AVE. - WILM., DE

**FULL LINE VENDING**

FREE SURVEY - PROFIT SHARING